

ክፍል ተ. የመንግሥት ገንዘብ/ጥብቢክ ፋይናንስ

ወንጠረዥ ተ.1 - ተ.4 :- የመንግሥትን ገቢ፣ መደበኛና የካፒታል ወጪን ይገልጻል።

SECTION K. PUBLIC FINANCE

Table k.1. - k.4 :- refer to the central government revenue, current and capital expenditure.

የመንግሥት ገቢና ወጪ
GENERAL GOVERNMENT REVENUE AND EXPENDITURE

ሠንጠረዥ ተ.1 TABLE K.1 በሚሊዮን ብር IN MILLION BIRR

በጀት ዓመት	ገቢ			ወጪ			BUDGET YEAR
	ደምር	ከሀገር ውስጥ	ከውጭ ሀገር	ደምር	ደመወዝና ሥራ ማስኬጃ	የካፒታል ወጪ	
1977	3243.0	2381.1	861.9	3983.1	2419.3	1563.8	1984/85**
1978	3525.7	2479.0	1046.7	4398.4	2466.9	1931.5	1985/86**
1979	3681.9	2697.8	984.1	4593.9	2638.8	1955.1	1986/87**
1980	3995.7	2894.4	1101.3	5133.1	3097.1	2036.0	1987/88**
1981	4328.2	3047.9	1280.3	6042.2	3758.5	2283.7	1988/89**
1982	4417.6	2985.4	1432.2	6539.1	4153.5	2385.6	1989/90**
1983	4449.6	3280.0	1169.6	4913.2	3699.2	1214.0	1990/91
1984	3733.8	2292.0	1441.8	4256.9	3305.1	951.8	1991/92
1985	3657.3	3191.2	466.1	5289.1	3517.9	1771.2	1992/93
1986	4926.1	3938.9	987.2	7202.8	4508.4	2694.4	1993/94
1987	7044.5	5912.8	1131.7	8868.1	5711.6	3156.5	1994/95
1988	8062.9	6966.1	1096.8	9456.7	5894.1	3562.6	1995/96
1989	9381.4	7877.4	1504.0	10142.7	5842.8	4299.9	1996/97
1990	9686.4	8413.1	1273.3	11227.9	7081.3	4146.6	1997/98
1991	11200.7	9557.5	1643.2	15243.9	11099.8	4144.1	1998/99
1992	11207.5	9982.8	1224.7	18033.1	14399.4	3633.7	1999/00
1993	13201.5	10573.5	2628.0	18796.9	14466.1	4330.8	2000/01
1994	12901.0	10476.0	2425.0	16679.0	10550.0	6129.0	2001/02
1995	15710.0	11156.0	4554.0	19840.0	13527.0	6313.0	2002/03
1996	18596.0	13917.0	4679.0	21565.0	13022.0	8543.0	2003/04
1997	20884.0	15591.0	5293.0	25910.0	14342.0	11568.0	2004/05
1998*	24151.0	19493.0	4658.0	30536.0	16444.0	14092.0	2005/06*
1999*	30064.1	21655.1	8409.0	36790.0	18347.8	18442.2	2006/07*
2000*	41001.3	30802.4	10198.9	47747.8	23626.8	24121	2007/08*
2001	55278.3	40644.4	14633.9	58534.4	27935.7	30598.7	2008/09
2002	67079	54558	12521	72423.5	33101.1	39322.4	2009/10
	TOTAL	DOMESTIC	FOREIGN	TOTAL	SALARY AND OPERATING COST	CAPITAL EXPENDITUR	
	REVENUE			EXPENDITURE			

የዓመቱ መጨረሻ ሰኔ 30 ነው ::
YEAR ENDING JULY 7

ከገንዘብ ሚኒስቴር የሂሳብ ማጠቃለያ የተገኘ
SOURCE: MINISTRY OF FINANCE, CENTRAL
ACCOUNTING DEPARTMENT

**የበጀት ግምት
** BUDGET ESTIMATE
* ጊዜያዊ ትክክለኛ
* PRELIMINARY ACTUAL

የመንግሥት ገቢ፡ በገቢው ዓይነት
GOVERNMENT REVENUE BY SOURCE

ሠንጠረዥ ተ.2 TABLE K.2 በሚሊዮን ብር IN MILION BIRR

	2000*	2001	2002	
የታክሶች ገቢ	23800.4	28997.4	43315	TAX REVENUE
አመታዊ የእድገት መጠን በመቶኛ	37.2	21.8	49.4	ANNUAL GROWTH RATE (%)
ከገቢ እና ከትርፍ ላይ የተገኙ ታክሶች	7014.0	9858.0	14903.0	INCOME AND PROFIT TAX
ከደመወዝ ግብር	2667.0	3530	4391	PERSONAL INCOME TAX
ከኪራይ	54.0	85	142	RENTAL INCOME TAX
ከንግድ	3040.0	4327	7391	CORPORATE BUSINESS INCOME TAX
ከገቢ ዕቃዎች የቅድሚያ ገቢ ግብር	498.0	762	1212	Withholding Tax on Imports
ከእርሻ	136.0	246	389	AGRICULTURAL INCOME TAX
ከኮፒታል ገቢ ግብር	30.0	21	37	CAPITAL GAINS TAX
የወለድ ገቢ ግብር	53.0	69	83	Interest Income
ሌላ ገቢ	148.0	248	382	OTHER INCOME
ከገጠር መራት ግብር	149.0	239	270	RURAL LAND USE FEE
ከከተማ መራት ግብር	239.0	331	606	URBAN LAND LEASE FEE
ቀጥታ ያልሆኑ ገቢዎች	5093.0	7325.0	10727.0	DOMESTIC INDIRECT TAXES
ከሽያጭ /አክሳይስ ታክስ	3522.0	4514	5698	SALES/ EXCISE/ TAXES
ከነዳጅ ቀረጥ				PETROLEUM PRODUCTS
ከአልኮል አክሳይስ ታክስ	710.0	1005	1030	ALCOHOL & TOBACCO
ሌሎች አክሳይስ ታክሶች	2812.0	3509	4668	OTHER EXCISE TAXES
ከአገልግሎት ንግድ ታክስ	1245.0	2584	4717	SERVICE SALES TAX
ከቴምብር ቀረጥ	326.0	227	312	STAMP DUTIES
ከውጭ አገር ንግድ ቀረጥ	11693.4	11814.0	17685.0	IMPORT DUTIES AND TAXES
ከገቢ እቃዎች የጥምርክ ቀረጥ	3892.0	3941	5852	CUSTOM DUTIES
ከሽያጭ አክሳይስ ታክስ	5098.1	5599	8352	SALES/ EXCISE/ TAXES
ከነዳጅ ውጤቶች ቀረጥ	381.6	640	721	PETROLEUM PRODUCTS
ከውጭ ከሚገቡ አልኮሎች እና ትምባዎች	93.2	64	114	ALCOHOL AND TOBACCO
ከሌሎች የገቢ እቃዎች	4623.3	4895	7518	OTHER IMPORTS
ሱር ታክስ	2703.3	2274	3481	SUR TAX
ከወጪ እቃ ቀረጥ	0.0	0.0	0.0	EXPORT TAXES
የጥምርክ ቀረጥ	0.0	0.0	0.0	CUSTOM DUTIES
ከቡና ቀረጥ	0.0	0.0	0.0	COFFEE DUTIES
ከቡና ሱር ታክስ	0.0	0.0	0.0	COFFEE SURTAX
ከሌሎች	0.0	0.0	0.0	OTHER
ከትራንዛክሽን ታክስ	0.0	0.0	0.0	TRANSACTION TAX
ታክስ ካልሆኑ ገቢዎች	7002.0	11647.0	11243.0	NON-TAX REVENUE
ከመጥፎ	421.0	554	489.0	CHARGES AND FEES
ከእቃዎችና አገልግሎቶች ሽያጭ	389.0	878	1032.0	SALES OF GOODS AND SERVICES
ከመንግስት አንቅስቃሴዎች	3661.0	7277	6979.0	GOV'T INVESTMENT INCOME
ከሎረታ	0.0	0	0.0	CONTRIBUTION TO PENSIONS FUND
ከንብረት ሽያጭ	355.0	940	108.0	REIMBURSEMENT & PROPERTY SALES
ልዩ ልዩ ገቢዎች	479.0	711	1067.0	MISCELLANEOUS REVENUE
ሌሎች ልዩ ገቢዎች	689.0	815	871.0	OTHER EXTRAORDINARY
ከፕራይቪታይዜሽን ገቢ	1008.0	472	697.0	PRIVATIZATION PROCEEDS
ጠቅላላ ገቢ	30802.4	40644.0	54558.0	TOTAL REVENUES
አመታዊ ለውጦች በመቶኛ	41.3	32	34.2	ANNUAL CHANGES(%)
የውጭ ድጋፍ	10198.9	14633.8	12521	EXTERNAL GRANTS
እርዳታ በአይነት	4434.0	4858	5561	GRANTS IN KIND/EARMARKED
የቀጥታ በጀት ድጋፍና ዕዳ ቅጥሳ	5764.9	9775.8	6960	DBSgrant & relief
የቀጥታ በጀት ድጋፍ (DBS)	5476.7	6328.2	6816	DBS grant
የዕዳ ቅጥሳ	288.2	180.6	144	HPIC & MDRI relief
የማዳበሪያ ዕርዳታ	-	3267	-	CPF
ጠቅላላ ገቢና ድጋፍ	41001.3	55277.8	67079	TOTAL REVENUE AND GRANTS
	2007/08*	2008/09	2009/10	

የዓመቱ መጨረሻ ሰኔ 30 ነው ።

YEAR ENDING JULY 7

ከገንዘብ ሚኒስቴር የሚገኘው የግብር ማጠቃለያ የተገኘ

SOURCE: MINISTRY OF FINANCE, CENTRAL ACCOUNTING DEPARTMENT

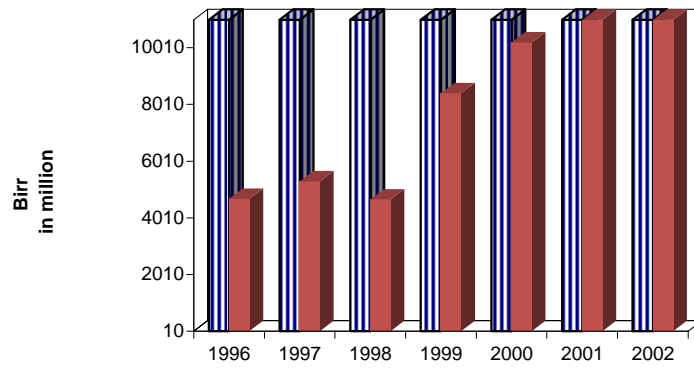
* ጊዜያዊ ትክክለኛ

* PRELIMINARY ACTUAL

+ የታሪጠ

+ REVISED

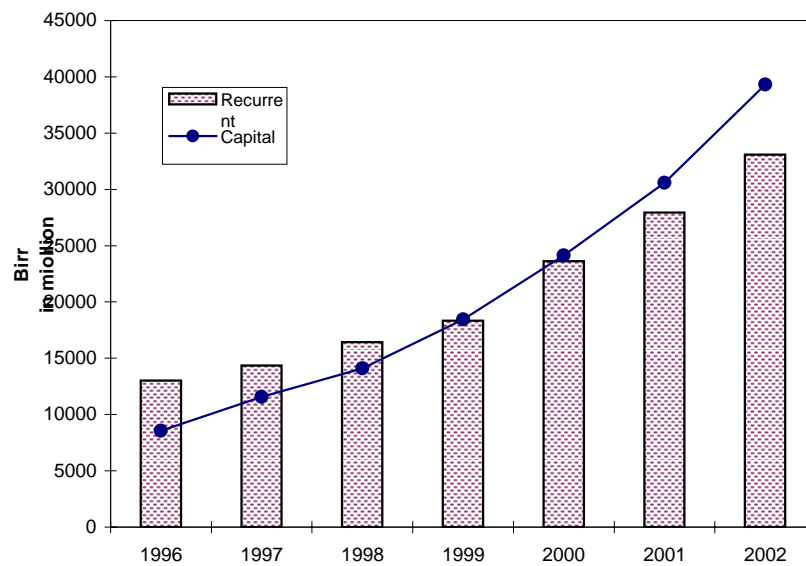
K1. GENERAL GOVERNMENT REVENUE



E.F.Y

■ DOMESTIC
■ FOREIGN

K2. GENERAL GOVERNMENT EXPENDITURE



E.F.Y

የመንግሥት ወጪ፣ በወጪ ዓይነት፣ ገቢ በገቢ ዓይነት
 GOVERNMENT EXPENDITURE AND REVENUE BY PURPOSE

ሠንጠረዥ ተ.3	TABLE K.3			በሚሊዮን ብር	IN MILION BIRR
ወጪ	2000*	2001	2002		
ሀ. መደበኛ ወጪ	23626.8	27935.7	33101.1	A. RECURRENT EXPENDITURE	
1. ለጠቅላላ አገልግሎት	9129.0	11261	12864	1. GENERAL SERVICES	
2. ለማህበራዊ አገልግሎት	8662.0	10249	12349	2. SOCIAL SERVICES	
3. ለኢኮኖሚ አገልግሎት	3110.0	3829	4064	3. ECONOMIC SERVICES	
4. ለጡረታ	0.0	0	0	4. PENSION	
5. ለእዳ ክፍያ	1965.8	2046.7	2676.1	5. PUBLIC DEBT	
6. ለልዩ ልዩ ወጪዎች	359.0	210	517	6. MISCELLANEOUS EXPENDITURE	
7. ድጎማ	0.0	0	0	7. SUBSIDIES	
8. ከውጭ እርዳታ	401.0	340	631	8. EXTERNAL ASSISTANCE	
9. ሴፍቲ ኔት	0.0	0	0	9. SAFETY NET	
ለ. የካፒታል ወጪ	24121.0	30598.7	39322.4	B. CAPITAL EXPENDITURE	
1. ለኢኮኖሚ	17728.9	21812.1	27240	1. ECONOMIC DEVELOPMENT	
2. ለማህበራዊ ኑሮ እድገት	5426.1	7067.9	9793	2. SOCIAL DEVELOPMENT	
3. ለጠቅላላ አገልግሎት	966.0	1718.7	2289.4	3. GENERAL SERVICES	
4. ሌሎች ወጪዎች	-	-	-	4. OTHERS	
ሐ. የካፒታል ድጋፍ	-	-	-	C. SINKING FUND	
ጠቅላላ ወጪ	47747.8	58534.4	72423.5	TOTAL EXPENDITURE	
ገቢ				REVENUE	
ሀ. መደበኛ ገቢ	30802.4	40644.4	54558.0	A. ORDINARY REVENUE	
1. ቀጥታ ቀረጦች	7014.0	9858	14903	1. DIRECT TAXES	
2. ቀጥታ ካልሆኑ ቀረጦች	5093.0	7325	10727	2. INDIRECT TAXES	
3. ከውጭ አገር ንግድ ቀረጦች	11693.4	11814.4	17685	3. FOREIGN TRADE TAXES	
4. ያልተቀረጡ ገቢዎች	7002.0	11647	11243	4. NON-TAX REVENUE	
ለ. የካፒታል ገቢ	-	-	-	B. CAPITAL RECEIPTS	
ሐ. የውጭ አገር እርዳታ	10198.9	14633.9	12521	C. EXTERNAL ASSISTANCE	
መ. ከውጭ ቀረ	-6746.5	-3256.1	-5344.5	D. CASH BALANCE	
ሠ. ብድር	8796.0	2759	5889	E. BORROWINGS	
1. ከውጭ አገር	2396.0	3176	4131	1. EXTERNAL	
2. ከአገር ውስጥ	6400.0	-417	1758	2. INTERNAL	
3. ሌሎች	-2049.6	497.1	-5445.5	3. OTHERS	
ጠቅላላ ገቢ እና እርዳታ	41001.3	55278.3	67079.0	TOTAL REVENUE AND GRANTS	
	2007/08*	2008/09	2009/10		

...መረጃ አልተገኘም
 ... DATA NOT AVAILABLE
 የዓመቱ መጨረሻ ሰኔ 30 ነው
 YEAR ENDING JULY 7

ከገንዘብ ሚኒስቴር የሂሳብ ማጠቃለያ የተገኘ
 SOURCE:- 1. MINISTRY OF FINANCE, CENTRAL ACCOUNTING DEPARTMENT

* ጊዜያዊ ትክክለኛ
 * PRELIMINARY ACTUAL

የመንግስት መደበኛ ወጪ
CURRENT GOVERNMENT EXPENDITURE

ሠንጠረዥ ተ.4 TABLE K.4

በሚሊዮን ብር IN MILLION BIRR

	2000*	2001	2002	
ጠቅላላ አገልግሎት	9129.0	11261.0	12865.0	GENERAL SERVICES
ለግዕዝ ስራ መንግስት	1437	1809	2543	ORGAN OF THE STATE
ለአገር መከላከያ	3453	4000	4000	NATIONAL DEFENCE
ለፍትህ	748	854	1266	JUSTICE
ለአገር ውስጥ ጥበቃ	1800	2541	2563	PUBLIC ORDER & SECURITY
ለጠቅላላ አገልግሎት	1691	2057	2493	GENERAL SERVICES
ለኢኮኖሚ አገልግሎት	3110.0	3829.0	4064.0	ECONOMIC SERVICES
ለግብርና	2329	2714	2748	AGRICULTURE AND NATURAL RESOURCES
ለንግድ ኢንዱስትሪና ቱሪዝም	244	380	507	TRADE, INDUSTRY & TOURISM
ለግዕድንና ሀይል	49	50	69	MINES AND ENERGY
ለትራንስፖርትና መገናኛ	155	200	240	TRANSPORT AND COMMUNICATIONS
ለኮንስትራክሽን	282	420	433	CONSTRUCTION
ለኢኮኖሚ ልማት ጥናት	51	65	67	ECONOMIC DEVELOPMENT STUDY
ለሕዝባዊ አገልግሎት	8662.0	10250.0	12348.0	SOCIAL SERVICES
ለትምህርትና ሥልጠና	6621	8009	9654	EDUCATION AND TRAINING
ለባህልና ስፖርት	347	327	395	CULTURE AND SPORTS
ለጤና ጥበቃ	1484	1737	2116	PUBLIC HEALTH
ለህዝብ ጉዳዮች	137	135	113	LABOUR AND SOCIAL AFFAIRS
ለመልሶ ማቋቋም	73	42	70	REHABILITATION
ሌሎች ወጪዎች	-	-	-	OTHERS
የጠረጴጅ ወጪ	0	0	0	PENSION EXPENDITURE
ዕዳ መክፈያ	1965.8	2046.7	2676.1	PUBLIC DEBT
የአገር ውስጥ ዕዳ ወለድ	908	1036	1220	INTERNAL DEBT INTEREST
የአገር ውስጥ ዕዳ	430.2	387.8	629.6	INTERNAL DEBT PRINCIPAL
የውጭ አገር ብድር ወለድ	225.2	251	368	EXTERNAL DEBT INTEREST
የውጭ አገር ዕዳ	402.4	371.9	458.5	EXTERNAL DEBT PRINCIPAL
ልዩ ልዩ ዕዳዎች	359	210	517	MISCELLANEOUS
ለድጎማ	0	0	0	SUBSIDIES
ከውጭ አገር ዕርዳታ	401	340	631	EXTERNAL ASSISTANCE
ለሴፍቲ ኔት	0	0	0	SAFETY NET
ድምር	23626.8	27936.7	33101.1	TOTAL RECURRENT EXPENDITURE
ዓመታዊ እድገት	28.8	18.2	18.5	ANNUAL GROWTH (%)
	2007/08*	2008/09	2009/10	

የዓመቱ መጨረሻ ሰኔ 30 ነው ::

YEAR ENDING JULY 7

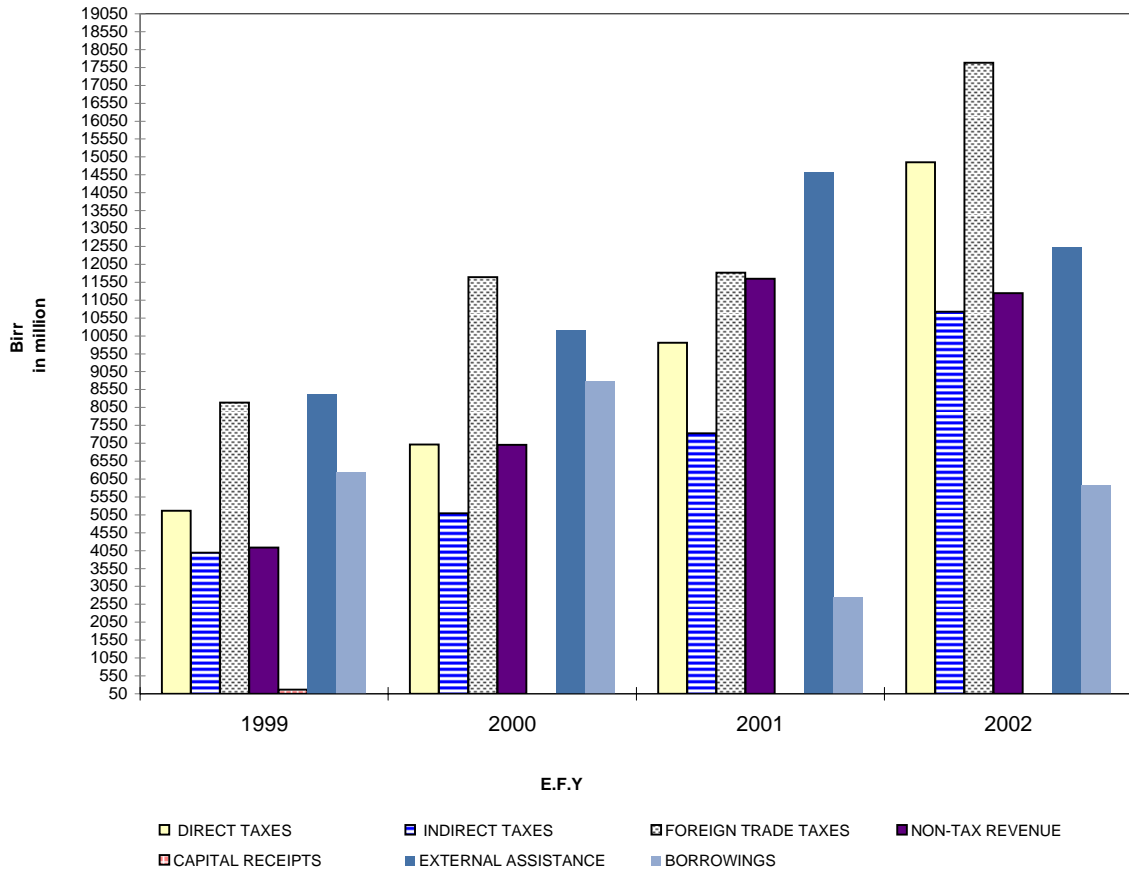
ከገንዘብ ሚኒስቴር የሂሳብ ማጠቃለያ የተገኘ

SOURCE: MINISTRY OF FINANCE, CENTRAL ACCOUNTING DEPARTMENT

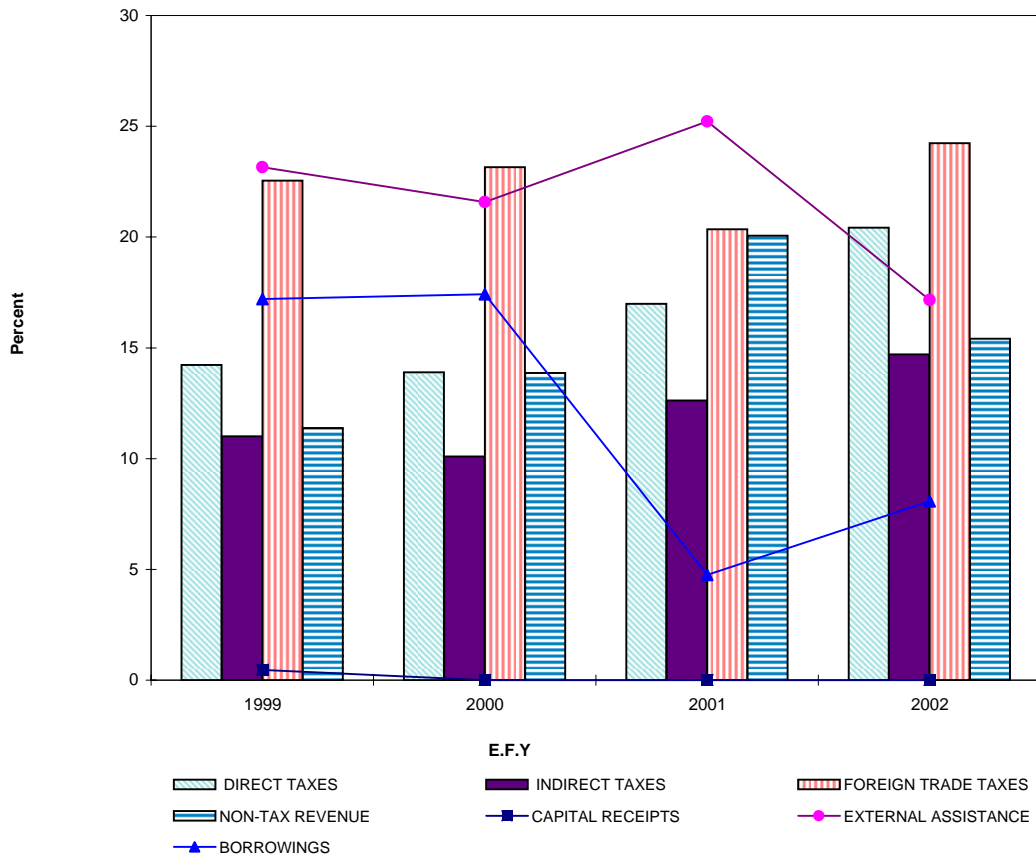
* ጊዜያዊ ትክክለኛ

* PRELIMINARY ACTUAL

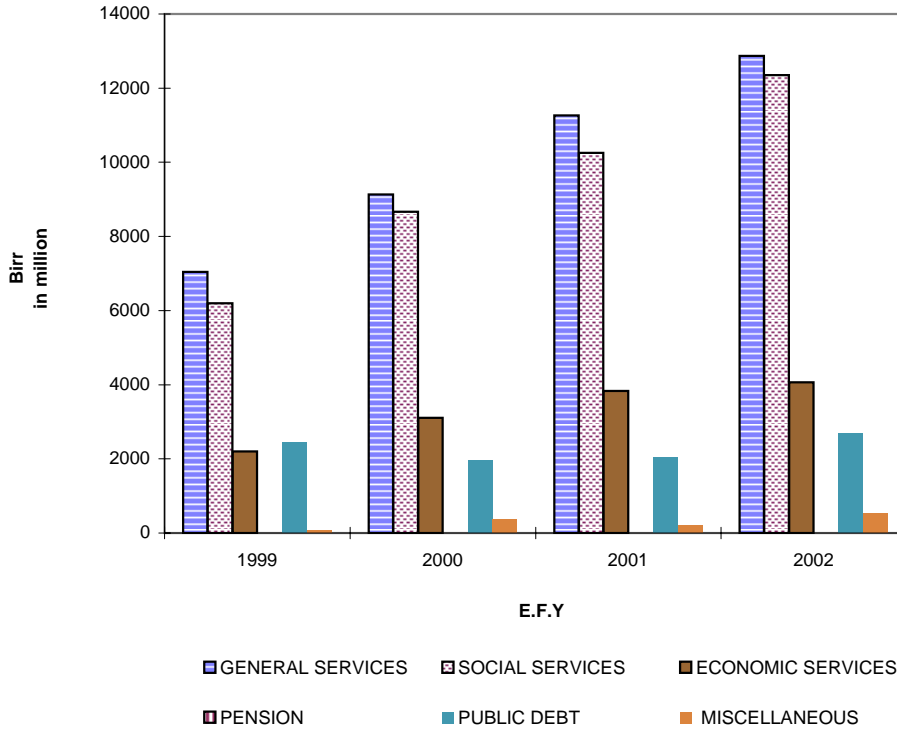
K3. GENERAL GOVERNMENT REVENUE BY SOURCE



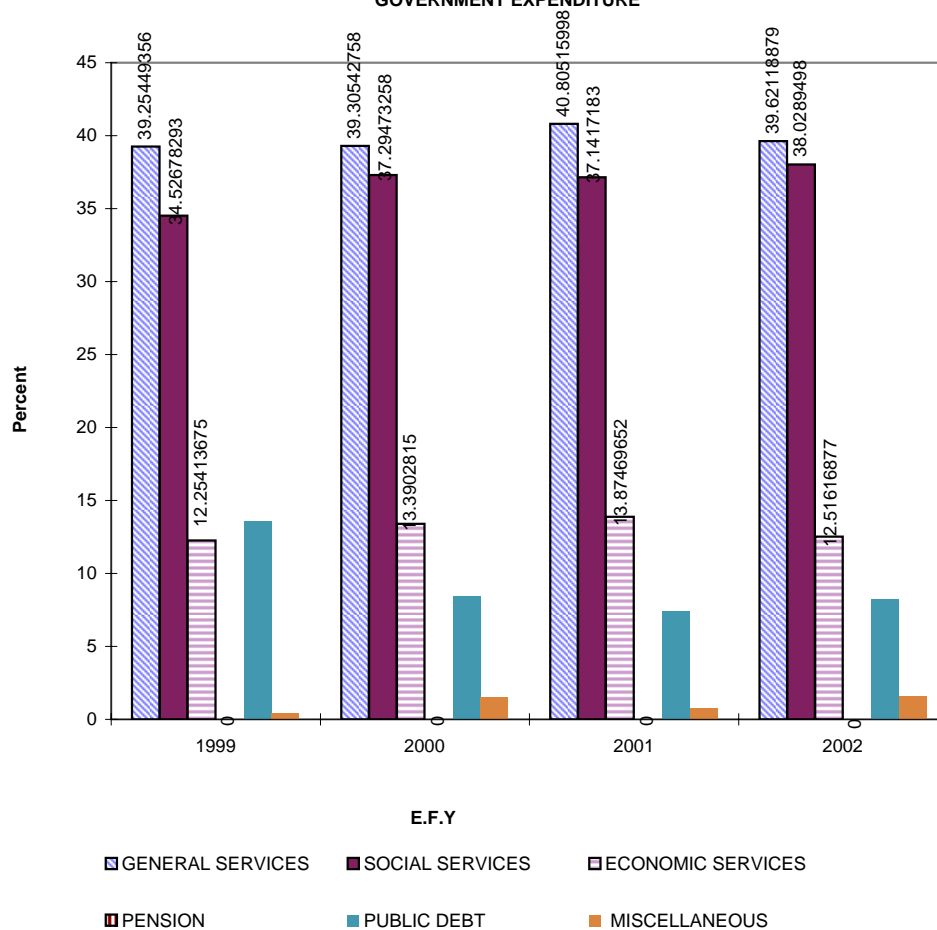
K4. PERCENTAGE COMPOSITION OF GOVERNMENT REVENUE BY SOURCE



K5. RECURRENT GOVERNMENT EXPENDITURE



K6. PERCENTAGE COMPOSITION OF RECURRENT GOVERNMENT EXPENDITURE



K7. GENERAL GOVERNMENT CAPITAL EXPENDITURE

