

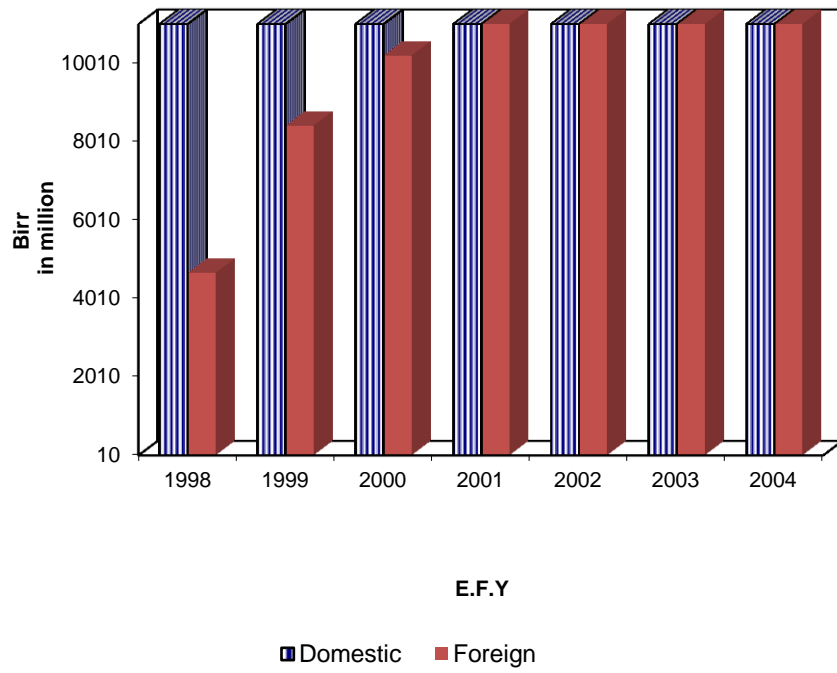
**ክፍል ተ. የመንግሥት ገንዘብ/ጥብሊክ ፋይናንስ**

ሠንጠረዥ ተ.1 - ተ.4 :- የመንግሥትን ገቢ፣ መደበኛና የካፒታል ወጪን ይገልጻል።

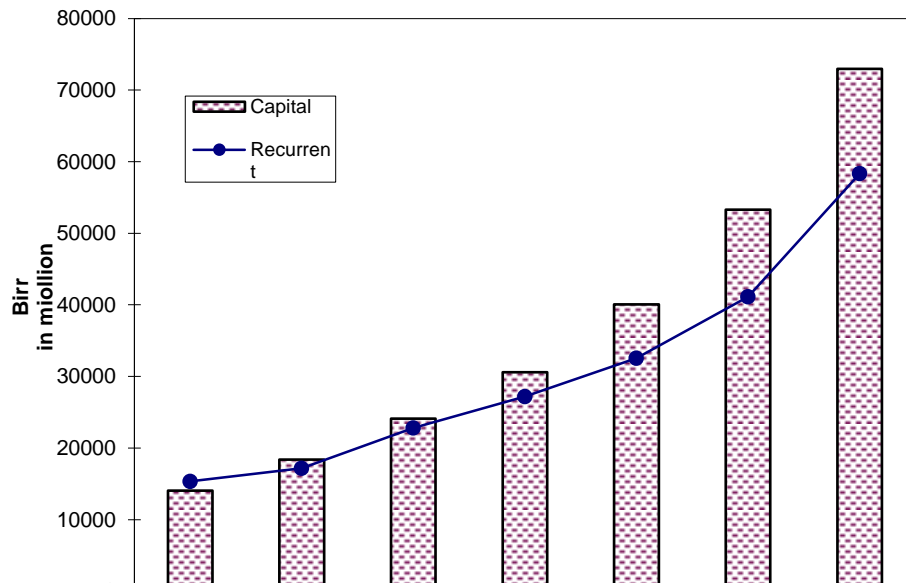
**SECTION K. PUBLIC FINANCE**

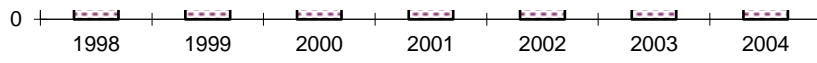
Table k.1. - k.4 :- refer to the central government revenue, current and capital expenditure.

### K1. General Government Revenue



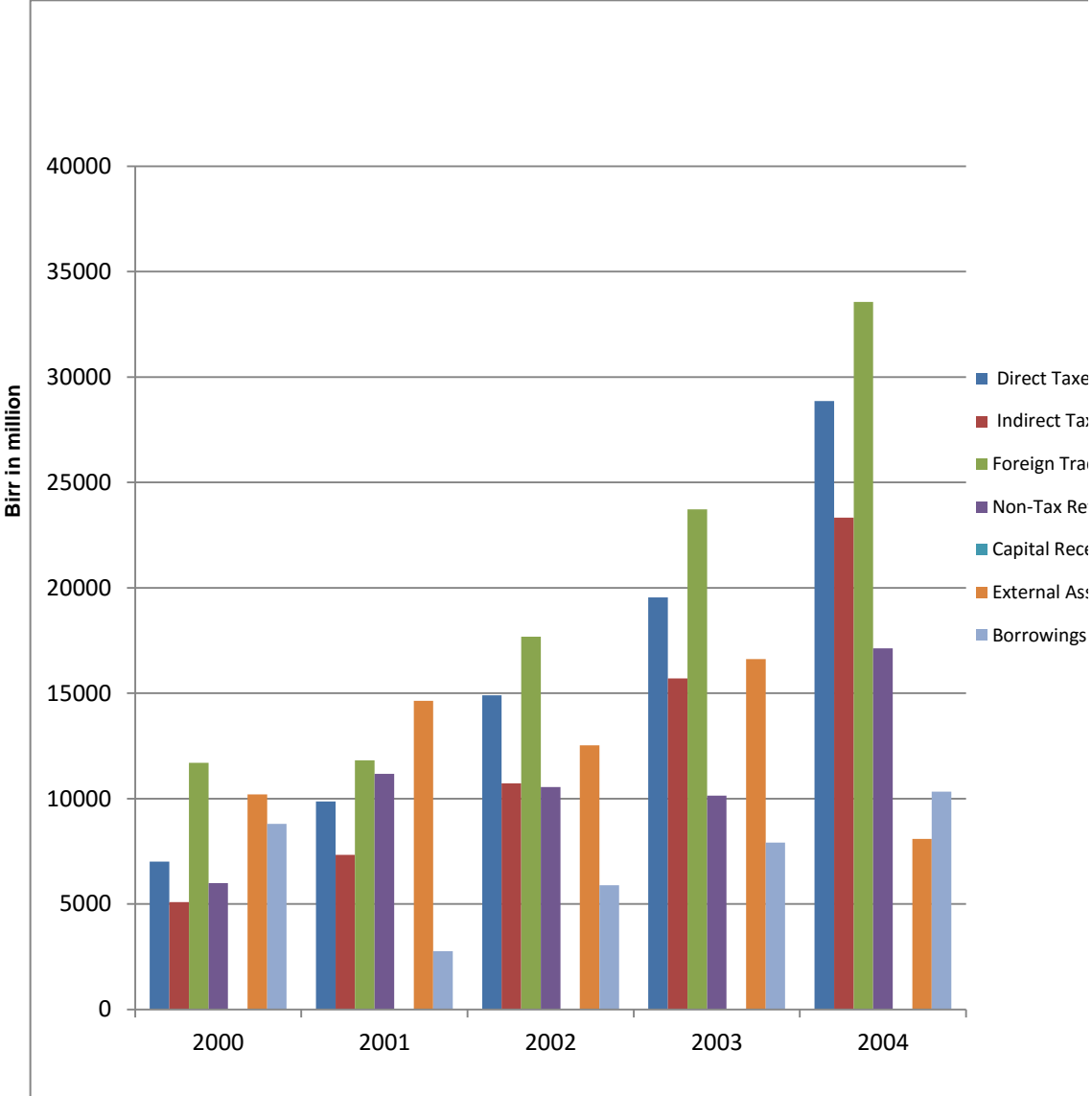
### K2. General Government Expenditure



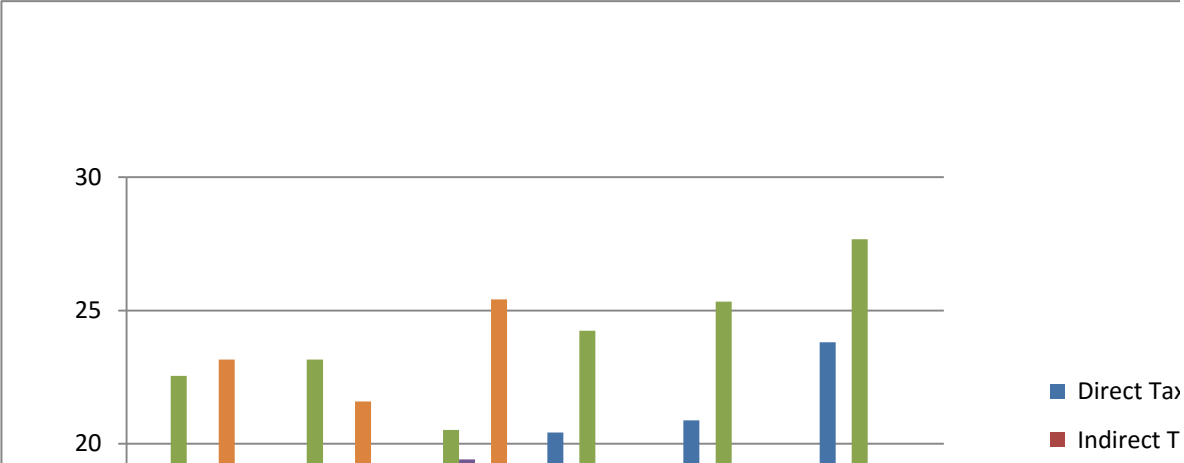


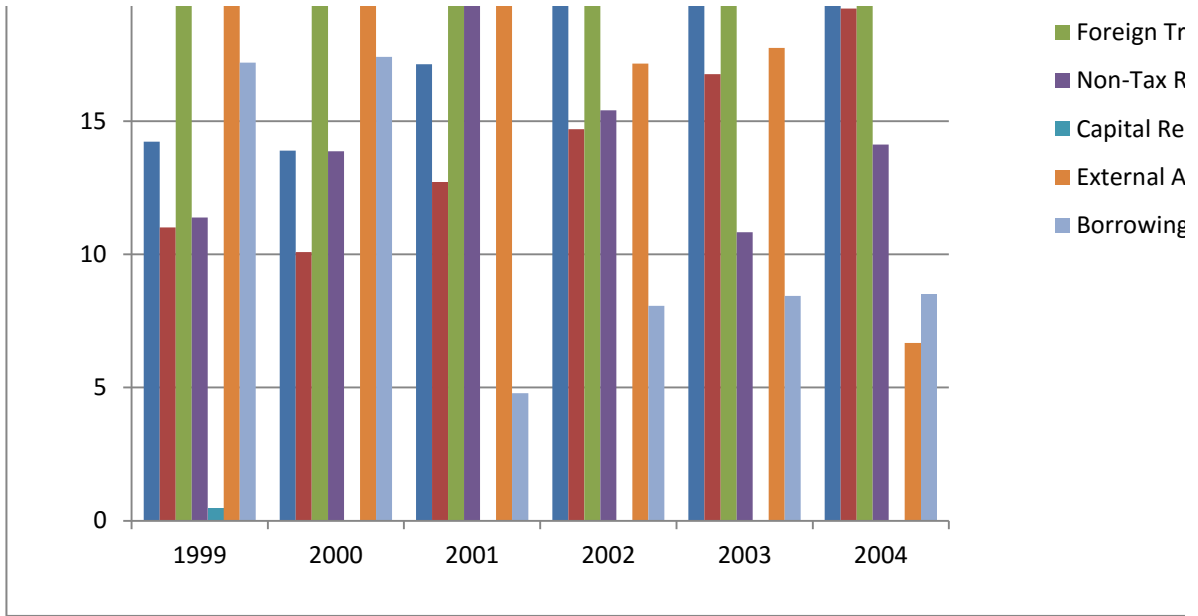
**E.F.Y**

### K3. General Government Revenue by Source



### K4. Percentage Composition of Government Revenue by Source





es  
xes  
de Taxes  
venue  
eipts  
sistance

kes  
axes

Trade Taxes

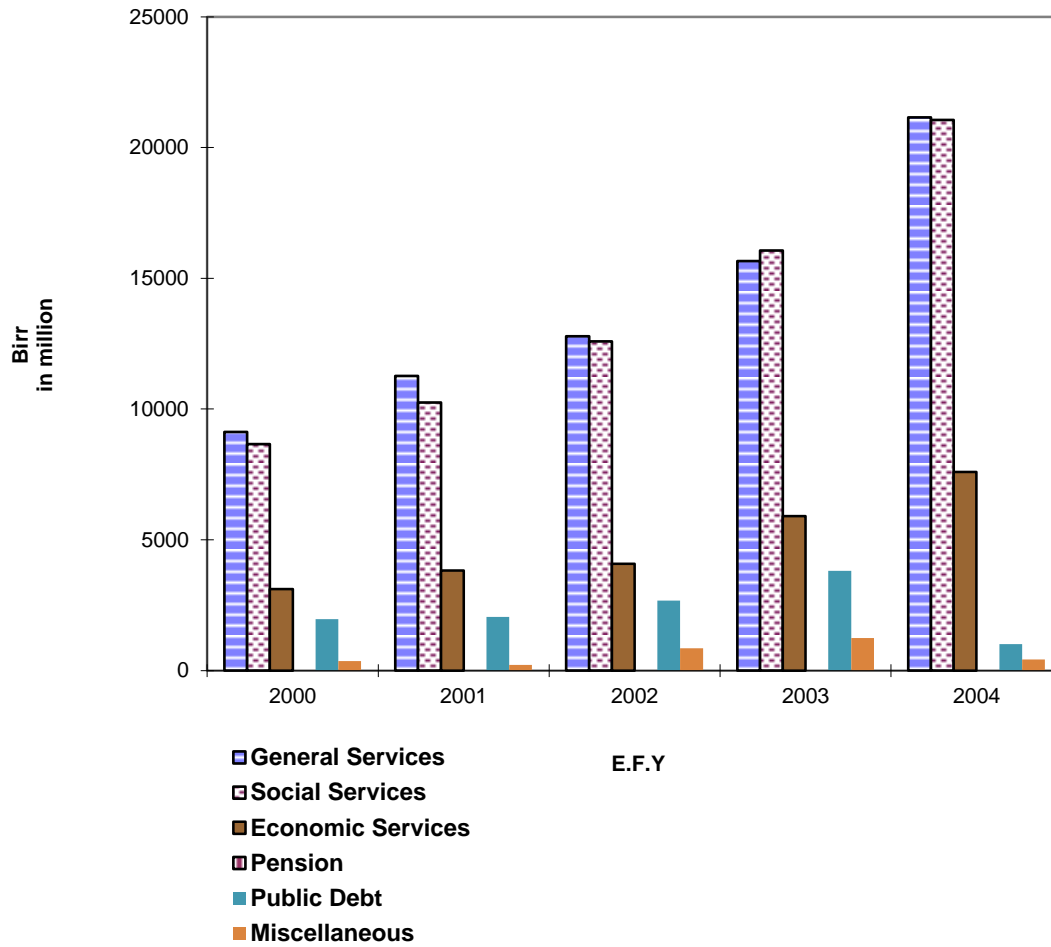
Revenue

Ceipts

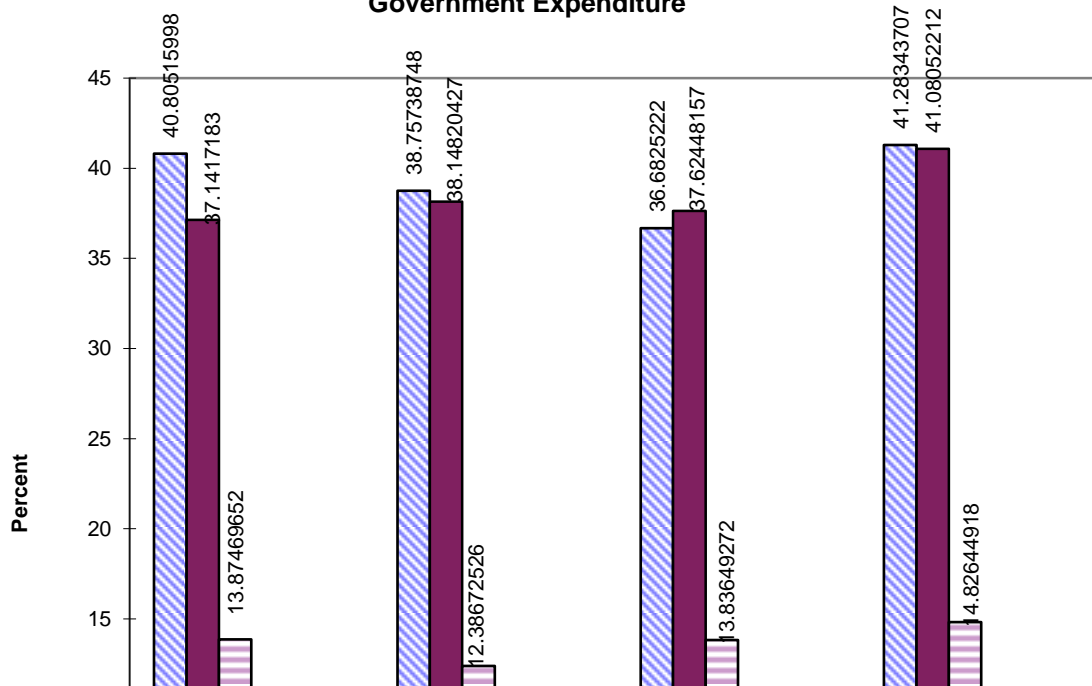
Assistance

35

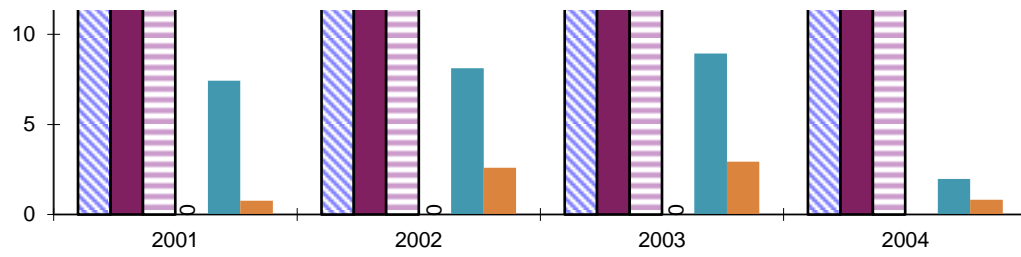
### K5. Recurrent Government Expenditure



### K6. Percentage Composition of Recurrent Government Expenditure







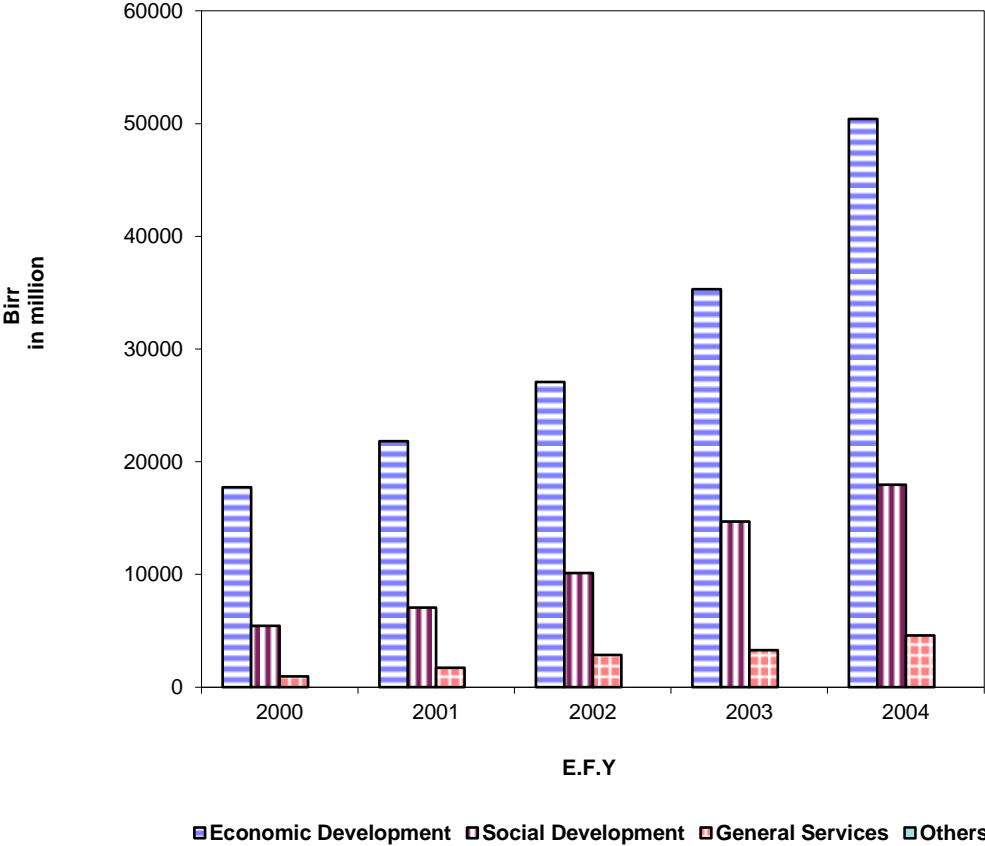
E.F.Y

- ▣ General Services
- Social Services
- ▣ Economic Services
- ▣ Pension
- Public Debt
- Miscellaneous





### K7. General Government Capital Expenditure



ሠንጠረዥ ተ.1 የመንግሥት ገቢና ወጪ  
Table K.1 General Government Revenue and Expenditure

በሚሊዮን ብር in Million Birr

በጀት ዓመት	ገቢ			ወጪ			1986/87**
	ድምር	ከሀገር ውስጥ	ከውጭ ሀገር	ድምር	ደመወዝና ሥራ ማስኬጃ	የካፒታል ወጪ	
1979	2,697.8	2,697.8	984.1	4,593.9	2,638.8	1,955.1	1986/87**
1980	3,995.7	2,894.4	1,101.3	5,133.1	3,097.1	2,036.0	1987/88**
1981	4,328.2	3,047.9	1,280.3	6,042.2	3,758.5	2,283.7	1988/89**
1982	4,417.6	2,985.4	1,432.2	6,539.1	4,153.5	2,385.6	1989/90**
1983	4,449.6	3,280.0	1,169.6	4,913.2	3,699.2	1,214.0	1990/91
1984	3,733.8	2,292.0	1,441.8	4,256.9	3,305.1	951.8	1991/92
1985	3,657.3	3,191.2	466.1	5,289.1	3,517.9	1,771.2	1992/93
1986	4,926.1	3,938.9	987.2	7,202.8	4,508.4	2,694.4	1993/94
1987	7,044.5	5,912.8	1,131.7	8,868.1	5,711.6	3,156.5	1994/95
1988	8,062.9	6,966.1	1,096.8	9,456.7	5,894.1	3,562.6	1995/96
1989	9,381.4	7,877.4	1,504.0	10,142.7	5,842.8	4,299.9	1996/97
1990	9,686.4	8,413.1	1,273.3	11,227.9	7,081.3	4,146.6	1997/98
1991	11,200.7	9,557.5	1,643.2	15,243.9	11,099.8	4,144.1	1998/99
1992	11,207.5	9,982.8	1,224.7	18,033.1	14,399.4	3,633.7	1999/00
1993	13,201.5	10,573.5	2,628.0	18,796.9	14,466.1	4,330.8	2000/01
1994	12,901.0	10,476.0	2,425.0	16,679.0	10,550.0	6,129.0	2001/02
1995	15,710.0	11,156.0	4,554.0	19,840.0	13,527.0	6,313.0	2002/03
1996	18,596.0	13,917.0	4,679.0	21,565.0	13,022.0	8,543.0	2003/04
1997	20,884.0	15,591.0	5,293.0	25,910.0	14,342.0	11,568.0	2004/05
1998*	19,530.0	12,943.0	6,587.0	29,376.0	15,334.0	14,042.0	2005/06*
1999*	21,797.0	13,608.0	8,189.0	35,563.0	17,165.0	18,398.0	2006/07*
2000*	29,794.0	18,101.0	11,693.0	46,915.0	22,794.0	24,121.0	2007/08*
2001*	40,184.0	28,370.0	11,814.0	57,774.7	27,176.0	30,598.7	2008/09*
2002*	53,864.0	36,179.0	17,685.0	72,598.0	32,537.0	40,061.0	2009/10*
2003*	69,120.0	45,394.0	23,726.0	93,832.0	40,535.0	53,297.0	2010/11*
2004*	101,883.0	68,327.0	33,556.0	124,416.3	51,445.0	72,971.3	2011/12*
	<b>Total</b>	<b>Domestic</b>	<b>Foreign</b>	<b>Total</b>	<b>Salary &amp; Operating Cost</b>	<b>Capital Expenditure</b>	<b>Budget Year</b>
	Revenue			Expenditure			

የዓመቱ መጨረሻ ሰኔ 30 ነው ::

Year Ending July 7

ከገንዘብ ሚኒስቴር የሂሳብ ማጠቃለያ የተገኘ

Source: Ministry of Finance, Central  
Accounting Department

\*\*የበጀት ግምት

\*\* Budget Estimate

\* ጊዜያዊ ትክክለኛ

\* Preliminary Actual

ሠንጠረዥ ተ.2 የመንግሥት ገቢ፣ በገቢው ዓይነት  
Table K.2 GOVERNMENT REVENUE BY SOURCE

	በሚሊዮን ብር			In Million Birr
	2002	2003	2004	
የታክሶች ገቢ	43,315.0	58,981.0	85,740.0	<b>Tax Revenue</b>
አመታዊ የእድገት መጠን በመቶኛ	49.4	36.1	45.4	Annual Growth Rate (%)
ከገቢ እና ከትርፍ ላይ የተገኙ ታክሶች	<b>14,903.0</b>	<b>19,549.0</b>	<b>27,877.0</b>	<b>Income and Profit Tax</b>
ከደመወዝ ግብር	4,391.0	5,733.0	8,900.0	Personal Income Tax
ከኪራይ	142.0	277.0	393.0	Rental Income Tax
ከንግድ	7,391.0	10,055.0	15,540.0	Corporate Business Income Tax
ከገቢ ዕቃዎች የቅድሚያ ገቢ ግብር	1,212.0	1,488.0	1,533.0	Withholding Tax on Imports
ከእርሻ	389.0	311.0	322.0	Agricultural Income Tax
ከካፒታል ገቢ ግብር	37.0	43.0	89.0	Capital Gains Tax
□□ለት □□ □□□	83.0	152.0	205.0	Interest Income
ሌላ ገቢ	382.0	749.0	894.0	Other Income
ከገጠር መራት ግብር	270.0	317.0	320.0	<b>Rural Land Use Fee</b>
ከከተማ መራት ግብር	606.0	424.0	660.0	<b>Urban Land Lease Fee</b>
ቀጥታ ያልሆኑ ገቢዎች	<b>10,727.0</b>	<b>15,672.0</b>	<b>23,326.0</b>	<b>Domestic Indirect Taxes</b>
ከሽያጭ /ኤክሳይስ ታክስ	5,698.0	9,796.0	12,335.0	Sales/ Excise/ Taxes
ከነዳጅ ቀረጥ			32.4	Petroleum Products
ከአልኮል ኤክሳይስ ታክስ	1,030.0	786.0	2,383.0	Alcohol & Tobacco
ሌሎች ኤክሳይስ ታክሶች	4,668.0	9,010.0	9,919.0	Other Excise Taxes
ከአገልግሎት ንግድ ታክስ	4,717.0	5,443.0	10,405.0	Service Sales Tax
ከቴምብር ቀረጥ	312.0	433.0	586.0	Stamp Duties
ከውጭ አገር ንግድ ቀረጥ	<b>17,685.0</b>	<b>23,726.0</b>	<b>33,556.0</b>	<b>Import Duties and Taxes</b>
ከገቢ እቃዎች የጉምሩክ ቀረጥ	5,852.0	7,717.0	11,091.0	Custum Duties
ከሽያጭ ኤክሳይስ ታክስ	8,352.0	11,539.0	15,941.0	Sales/ Excise/ Taxes
ከነዳጅ ውጤቶች ቀረጥ	721.0	0.0	1.0	Petroleum Products
ከውጭ ከሚገቡ አልኮሎች እና ትምባሆዎች	114.0	10.0	57.0	Alcohol & Tobacco
ከሌሎች የገቢ እቃዎች	7,518.0	1,082.0	1,266.0	Other Imports
ሱር ታክስ	3,481.0	4,470.0	6,525.0	Sur Tax
ከወጪ እቃ ቀረጥ	<b>0.0</b>	<b>0.0</b>	<b>0.0</b>	<b>Export Taxes</b>
የጉምሩክ ቀረጥ	0.0	0.0	0.0	Custum Duties
ከቡና ቀረጥ	0.0	0.0	0.0	Coffee Duties
ከቡና ሱር ታክስ	0.0	0.0	0.0	Coffee Sur Tax
ከሌሎች	0.0	0.0	0.0	Other
ከትራንዛክሽን ታክስ	0.0	0.0	0.0	Transaction Tax
ታክስ ካልሆኑ ገቢዎች	<b>11,243.0</b>	<b>11,598.0</b>	<b>17,124.0</b>	<b>Non-Tax Revenue</b>
ከመዋጮ	489.0	970.0	1,127.0	Charges and Fees
ከእቃዎችና አገልግሎቶች ሽያጭ	1,032.0	1,775.0	1,738.0	Sales of Goods and Services
ከመንግስት ኢንቨስትመንት	6,979.0	4,476.0	9,179.0	Gov't Investment Income
ከጡረታ	0.0	0.0	0.0	Contribution to Pensions Fund
ከንብረት ሽያጭ	108.0	194.0	451.0	Reimbursement & Property Sales
ልዩ ልዩ ገቢዎች	1,067.0	1,707.0	2,456.0	Miscellaneous Revenue
ሌሎች ልዩ ገቢዎች	871.0	1,018.0	2,173.0	Other Extraordinary
ከፕራይቪታይዜሽን ገቢ	697.0	1,458.0	2,763.9	Privatization Proceeds
ጠቅላላ ገቢ	<b>54,558.0</b>	<b>69,087.0</b>	<b>101,883.0</b>	<b>Total Revenues</b>
አመታዊ ለውጦች በመቶኛ	34.2	26.6	47.5	Annual Changes (%)
የውጭ ድጋፍ	<b>12,521.0</b>	<b>16,492.0</b>	<b>12,795.0</b>	<b>External Grants</b>
እርዳታ በአይነት	5,561.0	6,859.0	8,089.0	Grants in Kind /Earmarked
□□ቋጭት ድጋፍና ዕዳ ቅጥላ	<b>6,960.0</b>	<b>9,633.0</b>	4,706.0	DBSgrant & relief
□□ቋጭት ድጋፍ (DBS)	6,816.0	9,633.0	4,706.0	DBS grant
የዕዳ ቅጥላ	144.0	132.0	149.1	HPIC & MDRI relief
□□□□□□ □□□□	-	-	-	CPF
ጠቅላላ ገቢና ድጋፍ	<b>67,079.0</b>	<b>85,579.0</b>	<b>114,678.0</b>	<b>Total Revenue and Grants</b>
	<b>2009/10</b>	<b>2010/11</b>	<b>2011/12</b>	

የዓመቱ መጨረሻ ሰኔ 30 ነው ::

Year Ending July 7

ከገንዘብ ሚኒስቴር የሂሳብ ማጠቃለያ የተገኘ

Source: Ministry of Finance, Central Accounting Department

\* ጊዜያዊ ትክክለኛ

\* Preliminary Actual

+ የታረመ

+ Revised

ሠንጠረዥ ተ.3 የመንግሥት ወጪ፣ በወጪ ዓይነት፣ ገቢ በገቢ ዓይነት  
 Table K.3 GOVERNMENT EXPENDITURE AND REVENUE BY PURPOSE

በሚሊዮን ብር in Million Birr

ወጪ	2002	2003	2004	
<b>ሀ. መደበኛ ወጪ</b>	<b>33,101.1</b>	<b>42,449.0</b>	<b>58,320.4</b>	<b>A. Recurrent Expenditure</b>
1. ለጠቅላላ አገልግሎት	12,864.0	15,655.0	21,159.0	1. General Services
2. ለማህበራዊ አገልግሎት	12,349.0	16,057.0	21,055.0	2. Social Services
3. ለኢኮኖሚ አገልግሎት	4,064.0	5,325.0	6,577.0	3. Economic Services
4. ለጡረታ	0.0	0.0	0.0	4. Pension
5. ለእዳ ክፍያ	2,676.1	3,826.0	1,016.3	5. Public Debt
6. ለልዩ ልዩ ወጪዎች	517.0	1,248.0	424.0	6. Miscellaneous Expenditure
7. ድጎማ	0.0	0.0	0.0	7. Subsidies
8. ከውጭ እርዳታ	631.0	338.0	8,089.1	8. External Assistance
9. ሴፍቲ ኔት	0.0	0.0	0.0	9. Safety Net
<b>ለ. የካፒታል ወጪ</b>	<b>40,061.0</b>	<b>53,297.0</b>	<b>72,971.3</b>	<b>B. Capital Expenditure</b>
1. ለኢኮኖሚ	27,083.0	35,310.0	50,400.7	1. Economic Development
2. ለማህበራዊ ኑሮ እድገት	10,113.0	14,707.0	17,971.3	2. Social Development
3. ለጠቅላላ አገልግሎት	2,865.0	3,280.0	4,599.3	3. General Services
4. ሌሎች ወጪዎች	-	-	-	4. Others
<b>ሐ. የካፒታል ድጋፍ</b>	<b>-</b>	<b>-</b>	<b>-</b>	<b>C. Sinking Fund</b>
<b>ጠቅላላ ወጪ</b>	<b>73,162.1</b>	<b>95,746.0</b>	<b>131,291.7</b>	<b>Total Expenditure</b>
<b>ገቢ</b>				<b>Revenue</b>
<b>ሀ. መደበኛ ገቢ</b>	<b>54,561.0</b>	<b>69,120.0</b>	<b>136,420.0</b>	<b>A. Ordinary Revenue</b>
1. ቀጥታ ቀረጦች	14,906.0	19,550.0	28,858.0	1. Direct Taxes
2. ቀጥታ ካልሆኑ ቀረጦች	10,727.0	15,705.0	56,882.0	2. Indirect Taxes
3. ከውጭ አገር ንግድ ቀረጦች	17,685.0	23,726.0	33,556.0	3. Foreign Trade Taxes
4. ያልተቀረጡ ገቢዎች	11,243.0	10,139.0	17,124.0	4. Non-Tax Revenue
<b>ለ. የካፒታል ገቢ</b>	<b>-</b>	<b>-</b>	<b>-</b>	<b>B. Capital Receipts</b>
<b>ሐ. የውጭ አገር እርዳታ</b>	<b>12,521.0</b>	<b>16,623.0</b>	<b>12,944.1</b>	<b>C. External Assistance</b>
<b>መ. ከወጭ ቀሪ</b>	<b>-5,344.5</b>	<b>-24,373.0</b>		<b>D. Cash Balance</b>
<b>ሠ. ብድር</b>	<b>5,889.0</b>	<b>7,909.0</b>	<b>10,323.0</b>	<b>E. Borrowings</b>
1. ከውጭ አገር	4,131.0	7,798.0	6,530.0	1. External
2. ከአገር ውስጥ	1,758.0	111.0	3,793.0	2. Internal
3. ሌሎች	-5,445.5	-	-	3. Others
<b>ጠቅላላ ገቢ እና እርዳታ</b>	<b>67,082.0</b>	<b>85,743.0</b>	<b>149,364.1</b>	<b>Total Revenue and Grants</b>
	<b>2009/10*</b>	<b>2010/11*</b>	<b>2011/12</b>	

...መረጃ አልተገኘም

... Data not Available

የዓመቱ መጨረሻ ሰኔ 30 ነው

Year Ending July 7

ከገንዘብ ሚኒስቴር የሂሳብ ማጠቃለያ የተገኘ

Source:- 1. Ministry of Finance, Central Accounting Department

\* ጊዜያዊ ትክክለኛ

\* Preliminary Actual

ሠንጠረዥ ተ.4 የመንግስት መደበኛ ወጪ  
Table K.4 Current Government Expenditure

በሚሊዮን ብር in Million Birr

	2002	2003	2004	
<b>ጠቅላላ አገልግሎት</b>	<b>12,788.0</b>	<b>15,655.0</b>	<b>21,159.0</b>	<b>General Services</b>
ለማዕከላዊ መንግስት	2,560.0	2,658.0	3,351.0	Organ of The State
ለአገር መከላከያ	4,000.0	4,750.0	6,486.0	National Defence
ለፍትህ	1,383.0	1,709.0	2,338.0	Justice
ለአገር ውስጥ ጥበቃ	2,449.0	3,057.0	3,964.0	Public Order & Security
ለጠቅላላ አገልግሎት	2,396.0	3,481.0	5,020.0	General Services
<b>ለኢኮኖሚ አገልግሎት</b>	<b>4,522.0</b>	<b>5,905.0</b>	<b>7,599.0</b>	<b>Economic Services</b>
ለግብርና	3,097.0	3,852.0	5,114.0	Agriculture and Natural Resources
ለንግድ ኢንዱስትሪና ቱሪዝም	529.0	726.0	1,131.0	Trade, Industry & Tourism
ለማዕድንና ሀይል	70.0	68.0	58.0	Mines and Energy
ለትራንስፖርትና መገናኛ	240.0	343.0	72.0	Transport and Communications
ለኮንስትራክሽን	519.0	825.0	1,146.0	Construction
ለኢኮኖሚ ልማት ጥናት	67.0	91.0	78.0	Economic Development Study
<b>ለህዝባዊ አገልግሎት</b>	<b>12,587.0</b>	<b>16,057.0</b>	<b>21,055.0</b>	<b>Social Services</b>
ለትምህርትና ሥልጠና	9,820.0	12,370.0	16,246.0	Education and Training
ለባህልና ስፖርት	298.0	547.0	582.0	Culture and Sports
ለጤና ጥበቃ	2,162.0	2,903.0	3,899.0	Public Health
ለማህበራዊ ጉዳዮች	257.0	143.0	208.0	Labour and Social Affairs
ለመልሶ ማቋቋም	50.0	94.0	120.0	Rehabilitation
ሌሎች ወጪዎች	-	-	-	Others
የጡረታ ወጪ	0.0	0.0	0.0	Pension Expenditure
<b>ዕዳ መክፈያ</b>	<b>2,676.1</b>	<b>3,812.0</b>	<b>1,016.3</b>	<b>Public Debt</b>
የአገር ውስጥ ዕዳ ወለድ	1,220.0	1,300.0	1,388.0	Internal Debt Interest
የአገር ውስጥ ዕዳ	629.6	1,129.6	79.0	Internal Debt Principal
የውጭ አገር ብድር ወለድ	368.0	613.0	842.0	External Debt Interest
የውጭ አገር ዕዳ	458.5	770.3	937.3	External Debt Principal
ልዩ ልዩ ዕዳዎች	857.0	1,248.0	424.0	Miscellaneous
ለድጎማ	0.0	0.0		Subsidies
ከውጭ አገር ዕድዳታ	631.0	338.0	8,089.1	External Assistance
ለሴፍቲ ኔት	0.0	0.0		Safety Net
ድምር	<b>34,061.1</b>	<b>43,015.0</b>	<b>59,342.4</b>	Total Recurrent Expenditure
ዓመታዊ እድገት	20.5	19.0	27.5	Annual Growth (%)
	<b>2009/10</b>	<b>2010/11</b>	<b>2011/12</b>	

የዓመቱ መጨረሻ ሰኔ 30 ነው ::

Year Ending July 7

ከገንዘብ ሚኒስቴር የሂሳብ ማጠቃለያ የተገኘ

Source: Ministry of Finance, Central Accounting Department

\* ጊዜያዊ ትክክለኛ

\* Preliminary Actual