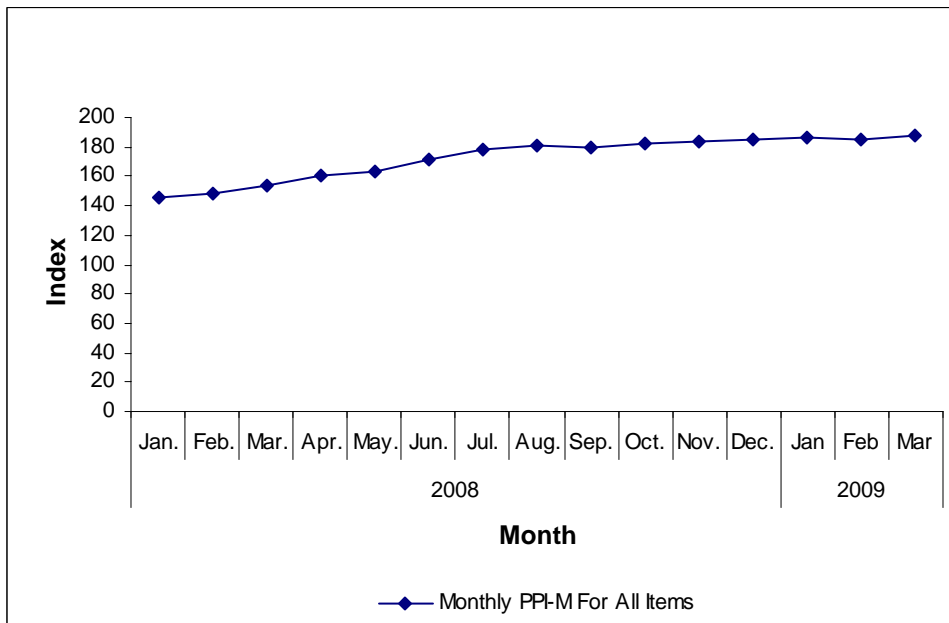


# CENTRAL STATISTICAL AGENCY

## PRODUCER PRICE INDEX FOR MANUFACTURING (PPI-M)

$$I_c = \frac{\sum W_i * \left( \frac{P_{ci}}{P_{oi}} \right)}{\sum W_i} * 100$$



June 2009  
Addis Ababa

**CENTRAL STATISTICAL AGENCY**  
**PRODUCER PRICE INDICES FOR MANUFACTURING (PPI-M)**

*January 2009 to March 2009*

**PPI – Total Manufacturing**

In the First quarter of 2009, Producer Price Index for Total Manufacturing has increased by 0.9 and 1.8 percent in January and March, respectively while Producer Price Index for total manufacturing in February has decreased by 1.0 percent compared to the previous month, i.e. as shown in Table 2 and the corresponding figure (Figure 1). Compared to the previous year’s same quarter, total Producer Price Indices increased by 28.1, 23.9 and 22.6 percent in January, February and March, respectively. As depicted in Table 3, this increase in producer prices of manufactured products was caused mainly by the rise in producer prices of food products. As compared to previous year’s same quarter, Producer Price Index increased by 24.8 percent in the First quarter of 2009 (Table 4).

Figure 1: Monthly Producer Price Indices for all items (compared to the previous month)

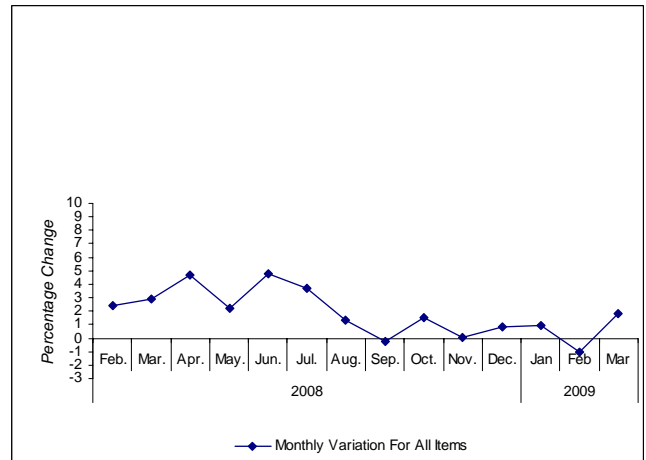
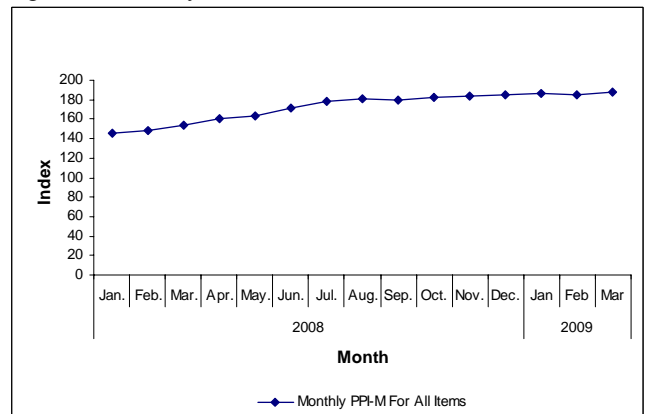


Figure 2: Monthly Producer Price Indices for all items



**PPI – Food, Beverage and Tobacco**

The producer price indices of food, beverage and tobacco stood at 214.1, 207.8 and 213.1 in January, February and March as depicted in Table 1. Compared to the previous month the index increased at a rate of 1.7 percent in January, and 2.5 percent in March while there is a 2.9 percent decrease in February (Table 2). As shown in Table 3, compared to the same quarter in 2008, producer price indices exhibited a hike of around 38.3 percent in January, 29.2 percent in February and 33.0 percent in March, respectively. This was mainly attributed to the rise in grain mill products and beer and malt products and also liquors. The percentage change in producer price indices revealed that there was a 33.4 percent rise in prices of food, beverage and tobacco products in this quarter compared to the previous year's same quarter as shown in Table 4.

**PPI – Other than Food, Beverage and Tobacco**

The monthly producer price indices for manufacturing products other than food, beverage and tobacco products stood at 167.7, 168.7 and 170.9 in January, February and March, respectively as shown in Table 1. Table 2 shows that, producer price indices has increased by 0.3 percent in January 0.6, percent in February, and 1.3 percent in March. On the other hand, compared to previous year's same period, producer price indices exhibited a 20.6 percent, 19.9 percent and 15.1 percent rise in January, February and March , respectively (Refer to Table 3). This rise was mainly due to the increase in prices of fabricated metal products and basic iron and steel. The percentage change in producer price indices between the corresponding quarters also indicated that there was a 18.4 percent increase in prices of products other than food, beverage and tobacco products as shown in Table 4.

Table 1: Monthly Producer Price indices for Manufacturing, January 2008 to March 2009

Base: First quarter 2005=100

SIC code	Description	Weight	2008												2009		
			Jan	Feb	Mar	Apr	May	Jun	Jul	Aug	Sep	Oct	Nov	Dec	Jan	Feb	Mar
<b>15-36</b>	<b>Total Manufacturing-PPI</b>	<b>1000</b>	<b>145.4</b>	<b>148.8</b>	<b>153.1</b>	<b>160.3</b>	<b>163.9</b>	<b>171.8</b>	<b>178.2</b>	<b>180.5</b>	<b>180.2</b>	<b>183.0</b>	<b>183.0</b>	<b>184.6</b>	<b>186.3</b>	<b>184.4</b>	<b>187.8</b>
<b>15</b>	<b>Food , Beverage and Tobacco</b>	<b>401</b>	<b>154.8</b>	<b>160.9</b>	<b>160.2</b>	<b>170.5</b>	<b>176.6</b>	<b>191.7</b>	<b>198.8</b>	<b>203.4</b>	<b>201.1</b>	<b>204.2</b>	<b>205.1</b>	<b>210.6</b>	<b>214.1</b>	<b>207.8</b>	<b>213.1</b>
1514	Vegetable and Animal Oils and Fats	10	187.5	189.6	199.4	201.2	200.5	206.0	205.0	198.7	198.7	176.3	167.5	164.6	171.8	171.8	167.0
1520	Dairy Products	6	180.8	180.8	180.8	189.1	193.2	199.4	207.8	209.2	221.7	213.2	213.2	213.2	213.2	210.9	210.9
1531	Grain Mill Products	49	171.4	190.6	209.1	245.9	276.4	304.1	323.3	300.6	267.8	276.3	275.9	272.8	268.7	272.3	286.8
1541	Bakery Products	21	157.3	157.3	173.5	182.2	184.7	184.7	182.8	171.7	181.2	180.2	180.2	180.2	190.1	190.1	190.1
1542	Sugar	116	170.6	183.3	166.0	170.5	176.7	182.6	176.4	196.7	198.3	206.8	207.2	226.0	230.7	210.8	222.9
1544	Macaroni and Pasta	17	138.7	145.9	158.9	160.9	172.1	181.5	185.2	185.2	185.2	184.9	186.7	192.9	191.5	193.2	193.2
1549	Other Food Products	17	131.2	124.5	124.9	128.8	129.1	130.6	130.6	130.6	131.4	133.4	138.0	138.0	134.6	135.6	136.2
1551	Liquors	8	108.3	108.8	109.8	137.6	137.6	151.2	140.5	140.5	143.7	148.7	189.9	192.6	193.1	193.1	193.1
1553	Beer And Malt	74	158.0	158.0	160.0	176.8	176.8	215.9	247.7	254.8	257.2	253.0	253.0	253.0	254.7	249.0	249.0
1554	Soft drinks and Mineral Water	50	132.7	132.7	132.7	132.7	132.7	139.8	146.0	146.0	146.0	146.0	146.0	147.4	147.4	147.4	147.9
1600	Tobacco	34	117.4	117.4	117.4	117.4	117.4	128.1	128.1	138.8	138.8	149.3	149.3	149.3	171.1	171.1	171.1
<b>17-36</b>	<b>Other than Food, Beverage and Tobacco</b>	<b>599</b>	<b>139.1</b>	<b>140.7</b>	<b>148.4</b>	<b>153.5</b>	<b>155.4</b>	<b>158.4</b>	<b>164.5</b>	<b>165.2</b>	<b>166.2</b>	<b>168.8</b>	<b>168.2</b>	<b>167.1</b>	<b>167.7</b>	<b>168.7</b>	<b>170.9</b>
17	Spinning ,Weaving and Finishing of Textiles	87	122.7	129.9	134.3	135.9	137.5	138.2	142.5	143.1	144.3	150.5	147.7	146.8	150.1	151.3	152.8
18	Wearing Apparel Except Fur Apparel	9	112.4	115.9	117.9	123.1	124.1	124.1	119.8	121.6	121.6	127.7	126.8	126.8	126.2	126.2	131.3
19	Leather and Footwear	79	121.2	122.0	123.4	131.6	130.0	130.4	123.9	122.1	124.4	129.8	128.6	128.1	122.2	122.4	123.2
21-22	Paper , Paper Products and Printing	56	123.1	123.9	124.1	129.5	131.9	133.9	134.6	133.9	136.2	145.7	145.1	147.1	141.8	144.7	144.6
24	Chemical and Chemical Products	67	121.2	122.1	124.5	127.4	127.8	132.2	138.8	139.6	140.7	149.6	150.3	149.2	151.6	152.9	151.7
25	Rubber and Plastic Products	50	132.7	132.7	137.1	139.6	144.6	153.9	163.0	163.1	163.5	167.7	167.7	168.6	168.9	168.9	168.9
26	Other Non-Metallic Mineral products	107	191.2	186.0	214.8	214.5	214.5	215.3	215.2	215.3	215.5	213.3	213.3	213.3	214.7	214.7	215.0
27	Basic Iron and Steel	69	151.5	158.3	164.4	181.8	188.9	191.5	220.7	227.8	227.9	218.3	218.9	209.9	215.3	219.4	235.4
28	Fabricated Metal Products Except Machinery and Equipment	30	144.3	152.6	152.6	161.0	168.5	186.9	214.1	213.3	216.6	219.5	215.7	215.7	214.2	214.2	214.2
34	Bodies for Motor Vehicles ,Trailers and Semi-Trailers	25	112.3	112.3	120.6	123.5	123.5	122.8	122.8	122.8	122.8	119.8	119.8	119.8	120.3	120.3	120.3
20 & 36	Wood and Furniture	21	120.3	120.3	121.1	124.3	124.5	128.5	132.0	132.0	132.6	134.8	137.1	137.1	143.0	143.0	143.0

Table 2: Percentage Change In the PPI-M Over Previous Month ,Feb 2008 to Mar 2009

SIC code	Description	Weight	2008												2009		
			Feb	Mar	Apr	May	Jun	Jul	Aug	Sep	Oct	Nov	Dec	Jan	Feb	Mar	
<b>15-36</b>	<b>Total Manufacturing-PPI</b>	<b>1000</b>	<b>2.4</b>	<b>2.9</b>	<b>4.7</b>	<b>2.3</b>	<b>4.8</b>	<b>3.7</b>	<b>1.3</b>	<b>-0.2</b>	<b>1.5</b>	<b>0.0</b>	<b>0.8</b>	<b>0.9</b>	<b>-1.0</b>	<b>1.8</b>	
<b>15</b>	<b>Food , Beverage and Tobacco</b>	<b>401</b>	<b>3.9</b>	<b>-0.5</b>	<b>6.4</b>	<b>3.6</b>	<b>8.5</b>	<b>3.7</b>	<b>2.3</b>	<b>-1.1</b>	<b>1.5</b>	<b>0.5</b>	<b>2.7</b>	<b>1.7</b>	<b>-2.9</b>	<b>2.5</b>	
1514	Vegetable and Animal Oils	10	1.1	5.2	0.9	-0.4	2.7	-0.5	-3.1	0.0	-11.3	-5.0	-1.7	4.4	0.0	-2.8	
1520	Dairy Products	6	0.0	0.0	4.6	2.2	3.2	4.2	0.7	6.0	-3.8	0.0	0.0	0.0	-1.1	0.0	
1531	Grain Mill Products	49	11.1	9.7	17.6	12.4	10.0	6.3	-7.0	-10.9	3.2	-0.1	-1.1	-1.5	1.3	5.4	
1541	Bakery Products	21	0.0	10.3	5.0	1.4	0.0	-1.0	-6.1	5.5	-0.5	0.0	0.0	5.5	0.0	0.0	
1542	Sugar	116	7.4	-9.4	2.7	3.6	3.4	-3.4	11.5	0.8	4.3	0.2	9.0	2.1	-8.6	5.8	
1544	Macaroni and Pasta	17	5.2	8.9	1.2	7.0	5.5	2.0	0.0	0.0	-0.1	1.0	3.3	-0.7	0.9	0.0	
1549	Other Food Products	17	-5.2	0.4	3.1	0.2	1.2	0.0	0.0	0.6	1.5	3.5	0.0	-2.5	0.8	0.4	
1551	Liquors	8	0.4	0.9	25.3	0.0	9.9	-7.1	0.0	2.3	3.5	27.7	1.4	0.3	0.0	0.0	
1553	Beer And Malt	74	0.0	1.3	10.4	0.0	22.2	14.7	2.9	1.0	-1.6	0.0	0.0	0.7	-2.2	0.0	
1554	Soft drinks and Mineral Water	50	0.0	0.0	0.0	0.0	5.4	4.4	0.0	0.0	0.0	0.0	1.0	0.0	0.0	0.3	
1600	Tobacco	34	0.0	0.0	0.0	0.0	9.2	0.0	8.3	0.0	7.6	0.0	0.0	14.6	0.0	0.0	
<b>17-36</b>	<b>Other than Food, Beverage and Tobacco</b>	<b>599</b>	<b>1.2</b>	<b>5.5</b>	<b>3.4</b>	<b>1.3</b>	<b>2.0</b>	<b>3.8</b>	<b>0.4</b>	<b>0.6</b>	<b>1.5</b>	<b>-0.3</b>	<b>-0.6</b>	<b>0.3</b>	<b>0.6</b>	<b>1.3</b>	
17	Spinning ,Weaving and Finishing of Textiles	87	5.9	3.4	1.2	1.2	0.5	3.1	0.5	0.9	4.2	-1.9	-0.6	2.3	0.8	1.0	
18	Wearing Apparel Except Fur Apparel	9	3.1	1.8	4.4	0.8	0.0	-3.5	1.5	0.0	5.0	-0.6	0.0	-0.5	0.0	4.1	
19	Leather and Footwear	79	0.7	1.1	6.7	-1.2	0.3	-5.0	-1.4	1.8	4.4	-0.9	-0.4	-4.6	0.2	0.7	
21-22	Paper , Paper Products and Printing	56	0.7	0.1	4.3	1.9	1.5	0.5	-0.5	1.7	7.0	-0.4	1.3	-3.6	2.0	0.0	
24	Chemical and Chemical Products	67	0.7	2.0	2.3	0.3	3.4	5.0	0.6	0.8	6.3	0.5	-0.7	1.6	0.9	-0.8	
25	Rubber and Plastic Products	50	0.0	3.3	1.8	3.5	6.5	5.9	0.0	0.2	2.6	0.0	0.5	0.2	0.0	0.0	
26	Other Non-Metallic Mineral products	107	-2.7	15.5	-0.1	0.0	0.4	-0.1	0.1	0.1	-1.0	0.0	0.0	0.7	0.0	0.1	
27	Basic Iron and Steel	69	4.5	3.9	10.5	3.9	1.4	15.2	3.2	0.0	-4.2	0.3	-4.1	2.6	1.9	7.3	
28	Fabricated Metal Products Except Machinery and Equipment	30	5.8	0.0	5.5	4.6	10.9	14.5	-0.4	1.5	1.3	-1.7	0.0	-0.7	0.0	0.0	
34	Bodies for Motor Vehicles ,Trailers and Semi-Trailers	25	0.0	7.4	2.4	0.0	-0.5	0.0	0.0	0.0	-2.4	0.0	0.0	0.4	0.0	0.0	
20 & 36	Wood and Furniture	21	0.0	0.7	2.6	0.2	3.2	2.7	0.0	0.5	1.7	1.7	0.0	4.3	0.0	0.0	

Table 3: Percentage Change In the PPI-M Relative to Same Month of Previous Year First quarter 2008 to First quarter 2009

Base: First Quarter 2005 =100

SIC code	Description	Weight	2008			2009			percentage change (%) from		
			Jan	Feb	Mar	Jan	Feb	Mar	Jan-08	Feb-08	Mar-08
<b>15-36</b>	<b>Total Manufacturing-PPI</b>	<b>1000</b>	<b>145.4</b>	<b>148.8</b>	<b>153.1</b>	<b>186.3</b>	<b>184.4</b>	<b>187.8</b>	<b>28.1</b>	<b>23.9</b>	<b>22.6</b>
<b>15</b>	<b>Food , Beverage and Tobacco</b>	<b>401</b>	<b>154.8</b>	<b>160.9</b>	<b>160.2</b>	<b>214.1</b>	<b>207.8</b>	<b>213.1</b>	<b>38.3</b>	<b>29.2</b>	<b>33.0</b>
1514	Vegetable and Animal Oils	10	187.5	189.6	199.4	171.8	171.8	167.0	-8.4	-9.4	-16.2
1520	Dairy Products	6	180.8	180.8	180.8	213.2	210.9	210.9	17.9	16.7	16.7
1531	Grain Mill Products	49	171.4	190.6	209.1	268.7	272.3	286.8	56.7	42.9	37.2
1541	Bakery Products	21	157.3	157.3	173.5	190.1	190.1	190.1	20.9	20.9	9.6
1542	Sugar	116	170.6	183.3	166.0	230.7	210.8	222.9	35.2	15.0	34.3
1544	Macaroni and Pasta	17	138.7	145.9	158.9	191.5	193.2	193.2	38.0	32.4	21.5
1549	Other Food Products	17	131.2	124.5	124.9	134.6	135.6	136.2	2.6	9.0	9.0
1551	Liquors	8	108.3	108.8	109.8	193.1	193.1	193.1	78.3	77.5	75.8
1553	Beer And Malt	74	158.0	158.0	160.0	254.7	249.0	249.0	61.2	57.6	55.6
1554	Soft drinks and Mineral Water	50	132.7	132.7	132.7	147.4	147.4	147.9	11.1	11.1	11.5
1600	Tobacco	34	117.4	117.4	117.4	171.1	171.1	171.1	45.8	45.8	45.8
<b>17-36</b>	<b>Other than Food, Beverage and Tobacco</b>	<b>599</b>	<b>139.1</b>	<b>140.7</b>	<b>148.4</b>	<b>167.7</b>	<b>168.7</b>	<b>170.9</b>	<b>20.6</b>	<b>19.9</b>	<b>15.1</b>
17	Spinning ,Weaving and Finishing of Textiles	87	122.7	129.9	134.3	150.1	151.3	152.8	22.4	16.4	13.8
18	Wearing Apparel Except Fur Apparel	9	112.4	115.9	117.9	126.2	126.2	131.3	12.2	8.9	11.3
19	Leather and Footwear	79	121.2	122.0	123.4	122.2	122.4	123.2	0.8	0.3	-0.1
21-22	Paper , Paper Products and Printing	56	123.1	123.9	124.1	141.8	144.7	144.6	15.3	16.7	16.5
24	Chemical and Chemical Products	67	121.2	122.1	124.5	151.6	152.9	151.7	25.1	25.3	21.8
25	Rubber and Plastic Products	50	132.7	132.7	137.1	168.9	168.9	168.9	27.3	27.3	23.2
26	Other Non-Metallic Mineral products	107	191.2	186.0	214.8	214.7	214.7	215.0	12.3	15.4	0.1
27	Basic Iron and Steel	69	151.5	158.3	164.4	215.3	219.4	235.4	42.1	38.5	43.1
28	Fabricated Metal Products Except Machinery and Equipment	30	144.3	152.6	152.6	214.2	214.2	214.2	48.5	40.4	40.4
34	Bodies for Motor Vehicles ,Trailers and Semi-Trailers	25	112.3	112.3	120.6	120.3	120.3	120.3	7.2	7.2	-0.3
20 & 36	Wood and Furniture	21	120.3	120.3	121.1	143.0	143.0	143.0	18.9	18.9	18.1

Table 4: Quarterly Producer Price Indices for Manufacturing ,January 2008 to March 2009

Base: First Quarter 2005 =100

SIC code	Description	Weight	2008				2009	Percentage Change(%)(from	
			1st Qtr	2nd Qtr	3rd Qtr	4th Qtr	1st Qtr	1st Qtr/08 to 4th Qtr/08	1st Qtr/08 to 1st
<b>15-36</b>	<b>Total Manufacturing-PPI</b>	<b>1000</b>	<b>149.1</b>	<b>165.3</b>	<b>179.6</b>	<b>183.5</b>	<b>186.2</b>	<b>1.4</b>	<b>24.8</b>
<b>15</b>	<b>Food , Beverage and Tobacco</b>	<b>401</b>	<b>158.6</b>	<b>179.6</b>	<b>201.1</b>	<b>206.6</b>	<b>211.7</b>	<b>2.4</b>	<b>33.4</b>
1514	Vegetable and Animal Oils	10	192.2	202.6	200.8	169.5	170.2	0.4	-11.4
1520	Dairy Products	6	180.8	193.9	212.9	213.2	211.7	-0.7	17.1
1531	Grain Mill Products	49	190.4	275.5	297.2	275.0	275.9	0.3	45.0
1541	Bakery Products	21	162.7	183.9	178.6	180.2	190.1	5.5	16.9
1542	Sugar	116	173.3	176.6	190.5	213.3	221.5	3.8	27.8
1544	Macaroni and Pasta	17	147.9	171.5	185.2	188.2	192.6	2.4	30.3
1549	Other Food Products	17	126.9	129.5	130.9	136.5	135.4	-0.8	6.8
1551	Liquors	8	109.0	142.2	141.5	177.1	193.1	9.1	77.2
1553	Beer And Malt	74	158.7	189.8	253.2	253.0	250.9	-0.8	58.1
1554	Soft drinks and Mineral Water	50	132.7	135.1	146.0	146.4	147.6	0.8	11.2
1600	Tobacco	34	117.4	121.0	135.3	149.3	171.1	14.6	45.8
<b>17-36</b>	<b>Other than Food, Beverage and Tobacco</b>	<b>599</b>	<b>142.7</b>	<b>155.8</b>	<b>165.3</b>	<b>168.0</b>	<b>169.1</b>	<b>0.6</b>	<b>18.4</b>
17	Spinning ,Weaving and Finishing of Textiles	87	128.9	137.2	143.3	148.3	151.4	2.1	17.4
18	Wearing Apparel Except Fur Apparel	9	115.4	123.8	121.0	127.1	127.9	0.6	10.8
19	Leather and Footwear	79	122.2	130.7	123.5	128.9	122.6	-4.9	0.3
21-22	Paper , Paper Products and Printing	56	123.7	131.8	134.9	146.0	143.7	-1.6	16.2
24	Chemical and Chemical Products	67	122.6	129.1	139.7	149.7	152.1	1.6	24.0
25	Rubber and Plastic Products	50	134.2	146.0	163.2	168.0	168.9	0.5	25.9
26	Other Non-Metallic Mineral products	107	197.3	214.8	215.3	213.3	214.8	0.7	8.9
27	Basic Iron and Steel	69	158.1	187.4	225.4	215.7	223.4	3.6	41.3
28	Fabricated Metal Products Except Machinery and Equipment	30	149.8	172.1	214.7	216.9	214.2	-1.3	43.0
34	Bodies for Motor Vehicles ,Trailers and Semi-Trailers	25	115.0	123.3	122.8	119.8	120.3	0.4	4.6
20 & 36	Wood and Furniture	21	120.6	125.8	132.2	136.3	143.0	4.9	18.6