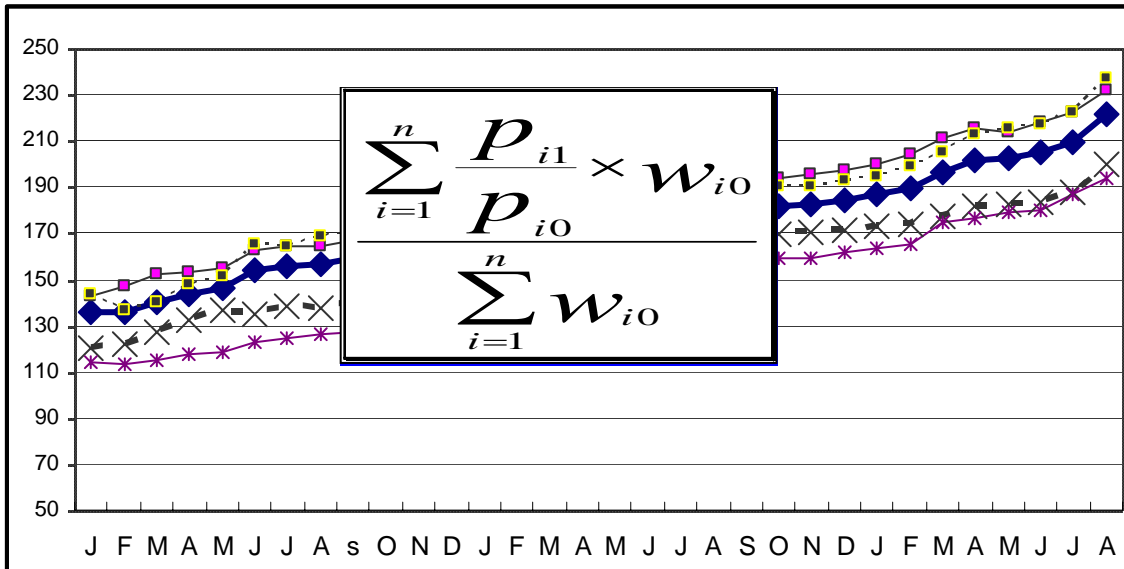


በኢትዮጵያ ፌዴራላዊ ዲሞክራሲያዊ ሪፐብሊክ
 የማዕከላዊ ስታቲስቲክስ ኤጀንሲ

THE FEDERAL DEMOCRATIC REPUBLIC OF ETHIOPIA
 CENTRAL STATISTICAL AGENCY

የአገር አቀፍና የክልሎች የሽማግሌት ዋጋ መመዘኛ ኢንዱክሶች
 የግንቦት ወር 2000 ዓ.ም.
 [ታህሳስ 1999 = 100]
 መረጃ ቁጥር 8

COUNTRY AND REGIONAL LEVEL CONSUMER PRICE INDICES



[December 2006 =100]
 For the month of May 2008
 Information No. 8

Tel: 251-11-1 553011
 Fax: 251-11-1550334.
 Email: csa@ethionet.et

አዲስ አበባ
 ሰኔ 5 ቀን 2000 ዓ.ም.
 ADDIS ABABA
 12 June 2008

CONTENTS

	Page
Introduction.....	4
Inflation Rate.....	7
Comparison of CPI Movements, Current Vs Last Year's Similar Months, at country Level.....	10
Comparison of CPI Movements, Current Vs Last Year's Similar Months, at country and Regional Levels.....	11

List of Tables

Table a: Number of Markets Covered and Basket of Commodities by Region.....	2
Table 1a: General Consumer Price Index and Its Components at Country Level.....	12
Table 1b: Consumer Price Index of Total Food and Its Components at Country Level.....	13
Table 1c: Consumer Price Index of House Rent, Construction Materials, Water, Fuel and Power and Its Components at Country Level.....	14
Table 2a: Summary of General Consumer Price Indices at Country and Regional Levels.....	15
Table 2b: Summary of Consumer Price Indices of Food at Country and Regional Levels.....	17
Table 3a: General Consumer Price Index and Its Components for the City of Addis Ababa Administration.....	19
Table 3b: Consumer Price Index of Total Food and Its Components for the City of Addis Ababa Administration.....	20
Table 4a: General Consumer Price Index and Its Components for the Afar Regional State.....	21
Table 4b: Consumer Price Index of Total Food and Its Components for the Afar Regional State.....	22
Table 5a: General Consumer Price Index and Its	

Components for the Amhara Regional State.....	23
Table 5b: Consumer Price Index of Total Food and Its Components for the Amhara Regional State.....	24
Table 6a: General Consumer Price Index and Its Components for the Benishangul-Gumuz Regional State.....	25
Table 6b: Consumer Price Index of Total Food and Its Components for the Benishangul-Gumuz Regional State.....	26
Table 7a: General Consumer Price Index and Its Components for the Dire Dawa Administrative Council.....	27
Table 7b: Consumer Price Index of Total Food and Its Components for the Dire Dawa Administrative Council.....	28
Table 8a: General Consumer Price Index and Its Components for the Gambela Peoples Regional State.....	29
Table 8b: Consumer Price Index of Total Food and Its Components for the Gambela Peoples Regional State.....	30
Table 9a: General Consumer Price Index and Its Components for the Harari Peoples Regional State.....	31
Table 9b: Consumer Price Index of Total Food and Its Components for the Harari Peoples Regional State.....	32
Table 10a: General Consumer Price Index and Its Components for the Oromia Regional State.....	33
Table 10b: Consumer Price Index of Total Food and Its Components for the Oromia Regional State.....	34
Table 11a: General Consumer Price Index and Its Components for the SNNP Regional State.....	35
Table 11b: Consumer Price Index of Total Food and Its Components for the SNNP Regional State.....	36
Table 12a: General Consumer Price Index and Its Components for the Somali Regional State.....	37
Table 12b: Consumer Price Index of Total Food and Its Components for the Somali Regional State.....	38
Table 13a: General Consumer Price Index and Its Components for the Tigray Regional State.....	39
Table 13b: Consumer Price Index of Total Food and Its Components for the Tigray Regional State.....	40

Introduction

The Consumer Price Index (CPI) measures the average change in the price paid by consumers for a fixed market basket of goods and services. It is usually based on household expenditure weights of the goods and services in the basket and their current market prices. The twelve CPI's (i.e., the CPI's of the 11 Regions and the CPI at Country Level) presented in this report are based on the results of the Household Income, Consumption and Expenditure Survey (HICES) conducted by the Central Statistical Agency in 2004/2005 from which expenditure weights are derived for major household goods and services of that period and adjusted using the December 2006 retail prices of the goods and services as a base period.

The December 2006 based CPI updates the previous CPI series (i.e. December 2000 based) and the newly selected baskets are more diversified and the weights are more accurate. It also showed various improvements and incorporates non-food index as an independent group. The new series is constructed for country as a whole and Regional States including Dire Dawa and the Addis Ababa City Administration. However, similar indices had been utilized at Addis Ababa Level since 1963 and at Country, Urban and Rural Levels since 1995/96 and in Country and Regional level since 2000.

All the twelve general indices are divided into two major groups that is food and non-food index. The non-food index has ten major groups each, namely: Beverages; Cigarettes and Tobacco; Clothing and Footwear; House Rent, Construction Materials, Water, and Fuel and Power; Furniture, Furnishing, Household Equipment and Operation; Medical Care and Health; Transport and Communication; Recreation, Entertainment and Education; Personal Care and Effects; and Miscellaneous Goods and Services. On the other hand, the Food Index has 13 sub-groups. These are: Cereals; Pulses; Bread and Other Prepared Food; Meat; Milk, Cheese and Eggs; Vegetables and

Fruits; Oil and Fats Spices; Potatoes, Other Tubers and Stems; Coffee Beans (whole) and Tea Leaves; Other Food Items; Milling Charges; and Food taken Away from Home. Furthermore, the new CPI based on December 2006 includes more detailed #Housing, Construction materials, Water and Fuel and Power; components.

For the construction of the current consumer price indices, up to date data on retail prices are collected in the purposely selected sample market places located in representative urban centers in each zone/special weredas of the country. Hence, a total of 119 market places were selected for the retail price survey. In each market place an enumerator is assigned to undertaking the data collection activities. The price data is collected from the 1st day through 15th days of European Calendar month under consideration. To calculate the monthly regional consumer price indices, geometric means of prices of the specific regions are used. The distribution of the market place of each region and items included in the basket of commodities are given on Table A on page 2.

An important factor in constructing a Consumer Price Index is to select the representative basket of goods and services. Including all consumption items into the market basket of goods and services is both cumbersome and unnecessarily costly in term of data collection and processing. Furthermore, it doesn't make sense to include an insignificant weight into an index basket which could not move the price relative up or downwards compared to the general market trend. As a result, basket of goods and services included in the regional baskets are determined by expenditure cut-off point. The total numbers of items included in the regional basket in the December 2006 based indices are given in Table A on page 2.

Country level CPI aggregates the regional group indices and the contributions of the five relatively big regions in terms of the magnitude of the expenditure account for more than 95 percent. These regions are Oromiya, Amhara, SNNP, Addis Ababa and Tigray. On the other hand, the contributions of the remaining regions to the

Country Level Consumer Price Index is about five percent.

According to the weights for food and non-food groups in Table B below, the December 2006 based CPI is about 57 percent of household expenditure spent on the food component, which declined by 3 percentage points as compared to the December 2000 based CPI. On the other hand, the expenditure on non-food components increased from 40 percent to 43 percent. This indicates that the economic situation in the country is going in the right direction as postulated by economic theory. Similarly, in this period larger regions resulted in a substantial decrease in the average weights for food, despite the increased food taken out of home. It was offset mainly by an increase in housing, construction materials, water and fuel and power, furnishing and transport and communication.

Table B: Major groups in the 2000 and 2006 based CPI and their weights at Country Level

No.	Major Group	Weights	
		2000 based CPI	2006 based CPI
1	Food	0.6008	0.5701
2	Non-Food	0.3992	0.4299
3	Beverages	0.0201	0.0202
4	Cigarettes and Tobacco	0.0051	0.0048
5	Clothing and Footwear	0.0926	0.0832
6	House Rent, Construction Materials, Water and Fuel and Power	0.1544	0.2056
7	Furniture, Furnishing, Household Equipment and Operation	0.0494	0.0375
8	Medical Care and Health	0.0120	0.0111
9	Transport and Communication	0.0199	0.0249
10	Recreation, Entertainment and Education	0.0101	0.0109
11	Personal Care and Effects	0.0092	0.0083
12	Miscellaneous Goods	0.0264	0.0234
	Total	1.000	1.000

መግቢያ..... 1
የወሩ ዋጋ ግሽበት ሁኔታ 7

የዘንድሮውና የአምናው ተመሳሳይ ወሮች የሽማቾች ዋጋ መመዘኛ ጠቋሚ አሀዝ ንፅፅር በአገር አቀፍ ደረጃ 10

የዘንድሮውና የአምናው ተመሳሳይ ወሮች የሽማቾች ዋጋ መመዘኛ ጠቋሚ አሀዝ ንፅፅር በአገር አቀፍና በክልሎች ደረጃ..... 11

የሠንጠረዦች ዝርዝር

ሠንጠረዥ ሀ፡ በጥናቱ የተሸፈኑ ገበያዎችና በኢንዱስትሪ ማዕቀፍ የተካተቱ ዕቃዎችና በዕቃዎች/አገልግሎቶች ብዛት በክልል..... 2

ሠንጠረዥ 1ሀ፡ ጠቅላላ የሽማቾች ዋጋ መመዘኛ ኤንደክስና በስሩ የተካተቱ ክፍሎች በአገር አቀፍ ደረጃ..... 12

ሠንጠረዥ 1ለ፡ ጠቅላላ ምግብና የምግብ ክፍሎች የሽማቾች ዋጋ መመዘኛ ኤንደክስ በአገር አቀፍ ደረጃ..... 13

ሠንጠረዥ 1ሐ፡ አገር አቀፍ የቤት ኪራይ፣ የቤት መስሪያ ዕቃዎች፣ ውሃና ኬነርጂ የሽማቾች ዋጋ መመዘኛ ኤንደክስ 14

ሠንጠረዥ 2ሀ፡ ጠቅላላ የሽማቾች ዋጋ መመዘኛ ኤንደክስ በአገር አቀፍና በክልሎች ደረጃ 15

ሠንጠረዥ 2ለ፡ የምግብ ዋጋ መመዘኛ ኤንደክስ ማጠቃለያ በአገር አቀፍ እና በክልሎች ደረጃ 17

ሠንጠረዥ 3ሀ፡ ጠቅላላ የሽማቾች ዋጋ መመዘኛ ኤንደክስና በስሩ የተካተቱ ክፍሎች ለአዲስ አበባ ከተማ መስተዳድር 19

ሠንጠረዥ 3ለ፡ ጠቅላላ ምግብና የምግብ ክፍሎች የሽማቾች ዋጋ መመዘኛ ኤንደክስ ለአዲስ አበባ ከተማ መስተዳድር 20

ሠንጠረዥ 4ሀ፡ ጠቅላላ የሽማቾች ዋጋ መመዘኛ ኤንደክስና በስሩ የተካተቱ ክፍሎች ለአፋር ክልላዊ መንግስት..... 21

ሠንጠረዥ 4ለ፡ ጠቅላላ ምግብና የምግብ ክፍሎች የሽማቾች ዋጋ መመዘኛ ኤንደክስ ለአፋር ክልላዊ መንግስት..... 22

ሠንጠረዥ 5ሀ፡ ጠቅላላ የሽማቾች ዋጋ መመዘኛ ኤንደክስና በስሩ የተካተቱ ክፍሎች ለአማራ ክልላዊ መንግስት..... 23

ሠንጠረዥ 5ለ፡ ጠቅላላ ምግብና የምግብ ክፍሎች የሽማቾች ዋጋ መመዘኛ ኤንደክስ ለአማራ ክልላዊ መንግስት..... 24

ሠንጠረዥ 6ሀ፡ ጠቅላላ የሽማቾች ዋጋ መመዘኛ ኤንደክስና በስሩ የተካተቱ ክፍሎች ለቤንሻንጉል-ጉሙዝ ክልላዊ መንግስት..... 25

ሠንጠረዥ 6ለ፡ ጠቅላላ ምግብና የምግብ ክፍሎች የሽማቾች ዋጋ መመዘኛ ለቤንሻንጉል-ጉሙዝ ክልላዊ መንግስት..... 26

<p>ሠንጠረዥ 7ሀ: ጠቅላላ የሸማቾች ዋጋ መመዘኛ ኤንደክስና በስሩ የተካተቱ ክፍሎች ለድሬደዋ አስተዳደር ካውንስል</p>	27
<p>ሠንጠረዥ 7ለ: ጠቅላላ ምግብና የምግብ ክፍሎች የሸማቾች ዋጋ መመዘኛ ለድሬደዋ አስተዳደር ካውንስል</p>	28
<p>ሠንጠረዥ 8ሀ: ጠቅላላ የሸማቾች ዋጋ መመዘኛ ኤንደክስና በስሩ የተካተቱ ክፍሎች ለጋምቤላ ህዝቦች ክልላዊ መንግስት</p>	29
<p>ሠንጠረዥ 8ለ: ጠቅላላ ምግብና የምግብ ክፍሎች የሸማቾች ዋጋ መመዘኛ ለጋምቤላ ህዝቦች ክልላዊ መንግስት</p>	30
<p>ሠንጠረዥ 9ሀ: ጠቅላላ የሸማቾች ዋጋ መመዘኛ ኤንደክስና በስሩ የተካተቱ ክፍሎች ለለሐረሪ ህዝብ ክልላዊ መንግስት</p>	31
<p>ሠንጠረዥ 9ለ: ጠቅላላ ምግብና የምግብ ክፍሎች የሸማቾች ዋጋ መመዘኛ ኤንደክስ ለለሐረሪ ህዝብ ክልላዊ መንግስት</p>	32
<p>ሠንጠረዥ 10ሀ: ጠቅላላ የሸማቾች ዋጋ መመዘኛ ኤንደክስና በስሩ የተካተቱ ክፍሎች ለአሮሚያ ክልላዊ መንግስት</p>	33
<p>ሠንጠረዥ 10ለ: ጠቅላላ ምግብና የምግብ ክፍሎች የሸማቾች ዋጋ መመዘኛ ኤንደክስ ለአሮሚያ ክልላዊ መንግስት</p>	34
<p>ሠንጠረዥ 11ሀ: ጠቅላላ የሸማቾች ዋጋ መመዘኛ ኤንደክስና በስሩ የተካተቱ ክፍሎች ለደ.ኢ.ብ.ብ.ሀ ክልላዊ መንግስት</p>	35
<p>ሠንጠረዥ 11ለ: ጠቅላላ ምግብና የምግብ ክፍሎች የሸማቾች ዋጋ መመዘኛ ኤንደክስ ለደ.ኢ.ብ.ብ.ሀ ክልላዊ መንግስት</p>	36
<p>ሠንጠረዥ 12ሀ: ጠቅላላ የሸማቾች ዋጋ መመዘኛ ኤንደክስና በስሩ የተካተቱ ክፍሎች ለሶማሌ ክልላዊ መንግስት</p>	37
<p>ሠንጠረዥ 12ለ: ጠቅላላ ምግብና የምግብ ክፍሎች የሸማቾች ዋጋ መመዘኛ ኤንደክስ ለሶማሌ ክልላዊ መንግስት</p>	38
<p>ሠንጠረዥ 13ሀ: ጠቅላላ የሸማቾች ዋጋ መመዘኛ ኤንደክስና በስሩ የተካተቱ ክፍሎች ለትግራይ ክልላዊ መንግስት</p>	39
<p>ሠንጠረዥ 13ለ: ጠቅላላ ምግብና የምግብ ክፍሎች የሸማቾች ዋጋ መመዘኛ</p>	40

መግቢያ

የሽማግሌዎች ዋጋ መመዘኛ ኢንዱክሽን ማለት ሽማግሌዎች ለተወሰኑ ዕቃዎችና አገልግሎቶች የከፈሉትን አማካይ የዋጋ ለውጥ ለመለካት የሚያገለግል ጠቋሚ አህዝ ነው። የዋጋ መመዘኛ ኢንዱክሽን አብዛኛውን ጊዜ መሠረት የሚያደርገው የቤተሰብ ገቢ፣ ፍጆታና ወጪ ጥናት ወጤት በሆነው ቤተሰቦች በዕቃዎችና ግልጋሎቶች ላይ ባወጡት የመቶኛ ድርሻ መጠንና የወቅቱ የገበያ ዋጋ ላይ ነው። በዚህ ሪፖርት ውስጥ የተካተቱት 12 ኢንዱክሶች (የ11 ክልሎችና የአገር አቀፍ) መሠረት ያደረጉት የማዕከላዊ ስታቲስቲክስ ኤጀንሲ በ1996/97 በጀት ዓመት በመላ አገሪቱ በናሙና በተመረጡ ቦታዎች ያካሄደውን የቤተሰብ ገቢ፣ ፍጆታና ወጪ ጥናት ወጤት ነው።

ይህ ታህሳስ ወር 1999 ዓ.ምን መሠረት ያደረገው (ታህሳስ 1999=100) የሽማግሌዎች ዋጋ መመዘኛ ኢንዱክሽን በክልል ደረጃ ሲዘጋጅ በዓይነቱ ለሁለተኛ ጊዜ የተዘጋጀ ሲሆን በታህሣሥ 1993 ዓ.ም. መሠረት ያደረገውን የሽማግሌዎች መመዘኛ ኢንዱክሽን የሚተካ ነው። በአገር አቀፍ ደረጃ ከ1988 ጀምሮና በአዲስ አበባ ከተማ ደረጃ ደግሞ ከ1955 ዓ.ም ጀምሮ በየወሩ ተመሳሳይ ኢንዱክሶች እየተዘጋጁ ለተጠቃሚዎች ሲሰራጩ መቆየታቸው ይታወቃል። እነዚህ 12 የዋጋ መመዘኛ ኢንዱክሶች በአገሪቱ የሚገኙ 11 ክልሎችና የአገር አቀፍን ሪፖርት ጨምሮ የሚሸፍነው የዕቃዎችና የአገልግሎቶችን ክምችት በያዙ ሁለት ዋና ክፍሎች የተከፈሉ ናቸው። እነሱም፡- የምግብና ምግብ ነክ ያልሆኑ መመዘኛ ኢንዱክሶች ሲሆን ምግብ ነክ ያልሆኑ መመዘኛ ኢንዱክሽን እንደገና በ10 ንዑስ ክፍሎች ይከፈላል። እነዚህም መጠጥ፣ ሲጃራና ትምባሆ፣ ልብስና መጫሚያ፣ የቤት ኪራይ፣ የቤት መሥሪያ ዕቃዎች፣ ወሃና ኢነርጂ፣ የቤት ዕቃዎች፣ የቤት ማስገጫዎች፣ የቤት ቁሳቁስና የቤት ሠራተኛ ደመወዝ፣ ሕክምና፣ መጓጓዣና መገናኛ፣ መዝናኛና ትምህርት፣ የግል ንጽህናና የግል ቋሚ ዕቃዎች እንዲሁም ሌሎች ዕቃዎችና አገልግሎቶች ሲሆኑ የሁሉም ክፍሎች አጠቃላይ ወጤት የሚሆነው ደግሞ የጠቅላላ ዋጋዎች መመዘኛ ኢንዱክሽን ነው።

በሁሉም ክልሎች የጠቅላላ ዋጋ መመዘኛ ኢንዱክሶች ስሌት አብዛኛውን የመቶኛ ወጪ ድርሻ የሚይዘው የምግብ መመዘኛ ኢንዱክሽን ሲሆን በሁሉም የምግብ ዋጋ መመዘኛ ኢንዱክሶች ዋና ዋና ክፍሎች እህል፣ ጥራጥሬ፣ ዳቦና ሌሎች የተዘጋጁ ምግቦች፣ ሥጋ፣ ወተት፣ ዐይብና ዕንቁላል፣ ዘይትና ቅባቶች፣ አትክልትና ፍራፍሬ፣ ቅመማ ቅመም፣ ድንችና ሌሎች ሥራሥሮች፣ ያልተቆላ ቡናና ሻይ ቅጠል፣ ሌሎች ምግቦች፣ የማስፈጫ አገልግሎትና ከቤት ወጪ የተወሰዱ ምግቦች ናቸው።

ለዋጋ ኢንዱክሶቹ የተመረጡት ዕቃዎችና አገልግሎቶች የዋጋ መረጃ የሚሰበሰበው በየዞን/ በየልዩ ወረዳ በናሙና በተመረጡ ወካይ ከተሞች ውስጥ ባሉ የገበያ ቦታዎች ነው። በመሆኑም ከእያንዳንዱ ዞን ሁለት ከተሞች (የገበያ ቦታዎች) የተመረጡ ሲሆን እንደዚሁም በእያንዳንዱ ልዩ ወረዳ አንድ ከተማ (የገበያ ቦታ) በጥናቱ እንዲካተት ተደርጓል።

በእነዚህ ከተሞች ውስጥ ተመድበው ለሚሰሩ መረጃ ሰብሳቢዎች በየበጀት ዓመቱ መጨረሻ በመረጃ አሰባሰብ ዘዴው ላይ ስልጠና የሚሰጥ ሲሆን ለአሰባሰቡ የሚረዱ የመስክ መገልገያ መሣሪያዎች (ሚዛን፣ ሜተር ... ወዘተ) ይሰጣቸዋል። እነዚህ መሣሪያዎችን በመጠቀም በየወሩ የዋጋ መረጃዎችን ከነጋዴዎች ይሰበስባሉ። አንዳንድ ጊዜም አንድ በላተኛ ወይም ገዢ ከነጋዴ ሲገዛ ቢገኝና ለሥራው ተባባሪነቱን ካሳየ መረጃው ከርሱም ይሰበስባል። የችርቻሮ ዋጋ መረጃ የሚሰበሰበው እንደ አውሮፓውያን ዘመን አቆጣጠር ወሩ በገባ ከ1ኛው ቀን አንስቶ አስከ 15ኛው ቀን ነው። የክልል ኢንዱስትሪ ለማስላት ለኢንዱስትሪ ለተመረጡት ዕቃዎችና አገልግሎቶች አማካይ የችርቻሮ ዋጋቸውን የጂኦሜትሪክ ሚን ዘዴ ጥቅም ላይ ውሎአል። የኢንዱስትሪ ሪፖርቱም በየወሩ ለተጠቃሚዎች በዚህ መልክ ይቀርባል።

የአገር አቀፍ የችርቻሮ ዋጋ መመዘኛ ኢንዱስትሪ የሚሰላው እያንዳንዱ ክልል ለአገር አቀፍ የቤተሰብ ወጪ ያለውን የመቶኛ ድርሻ መሠረት በማድረግ ነው። በመሆኑም ለአገር አቀፍ ኢንዱስትሪ ስሌት ከ95 በመቶ በላይ አስተዋጽኦ የሚያደርጉ ክልሎች በቅደም ተከተል ኦሮሚያ፣ አማራ፣ የደቡብ ብሔር ብሔረሰቦችና ሕዝቦች፣ አዲስ አበባና ትግራይ ሲሆኑ የተቀሩት ክልሎች በየወሩ ለሚታየው አገር አቀፍ የችርቻሮ ዋጋ መመዘኛ ኢንዱስትሪ ስሌት የሚኖራቸው አስተዋጽኦ ከአምስት በመቶ የማይበልጥ ነው።

ለችርቻሮ ዋጋ ጥናት በአጠቃላይ 119 የገበያ ቦታዎች የተመረጡ ሲሆን በእያንዳንዱ ክልል የተመረጡ የናሙና ገበያዎች ብዛትና በየኢንዱስትሪዎቻቸው ማዕቀፍ የተካተቱ ዕቃዎች/አገልግሎቶች ብዛት ከዚህ በታች ቀርቦአል።

ሠንጠረዥ ሀ: በጥናቱ የተሸፈኑ ገበያዎችና በኢንዱስትሪ ማዕቀፍ የተካተቱ ዕቃዎች/አገልግሎቶች ብዛት በክልል

Table A: Number of Markets Covered and Basket of Commodities by Region

ተራ ቁጥር	ክልል	የገበያ ቦታዎች ብዛት	በኢንዱስትሪ ዕቃዎች/ ብዛት		Region
			ታህሳስ 1993=100	ታህሳስ 1999=100	
1	ትግራይ	8	114	143	Tigray
2	አፋር	4	85	153	Afar
3	አማራ	20	118	144	Amhara
4	ኦሮሚያ	24	127	161	Oromia
5	ሶማሌ	6	85	122	Somalie
6	ቤኒሻንጉል ጉምዝ	6	111	142	Benishangul-Gumuz
7	ደ.ብ.ቤ.ሀ	31	130	152	SNNP
8	ጋምቤላ	3	105	103	Gambela
9	ሐረሪ	2	102	158	Harari
10	አዲስ አበባ ከተማ	12	175	193	Addis Ababa City Administration
11	ድሬዳዋ አስተዳደር ድምር	3	121	150	Dire Dawa Administrative Council
		119			Total
Sr.No.		Number of Markets	Basket of Commodities		

ለጠቋሚ አሀዙ ክንዋኔ ዋናው ነገር በጠቋሚ አሀዙ ማዕቀፍ ተካትተው በዋናነት የሚያገለግሉ ዕቃዎችና አገልግሎቶች የመምረጥ ጉዳይ ነው። ጠቋሚ አሀዞች የሚመሠረቱት በአጠቃላይ በናሙና በሚመረጡ ዕቃዎች ላይ ሲሆን በጠቋሚ አሀዙ ማዕቀፍ ውስጥ መካተት የሚገባው ዕቃ መወሰን ግን ሁሌም ቀላል የሚባል ተግባር አይደለም። የተለያዩ የአመራረጥ ዘዴ መጠቀም ቢቻልም የሚመረጡት ዕቃዎች ለረጅም ጊዜ የሚኖራቸው ተፈላጊነት፣ በአስተማማኝ ሁኔታ በገበያ ላይ የመገኘታቸው ጉዳይ፣ ሌሎችን ዕቃዎች የመወከል ብቃትና ከሌሎች ምርቶች ጋር ያላቸው ተወዳዳሪነት መሠረት ያደረገ እንዲሆን ይፈለጋል። በአጠቃላይ የተመረጡት ዕቃዎች በበቂ መጠን የመገኘታቸው ሁኔታ፣ በየወቅቱ ተወዳዳሪነታቸውና ዕቃዎችና አገልግሎቶች ምድቡን የመወከላቸው ብቃትን ማረጋገጥ ያስፈልጋል።

ታህሳስ 1999 ዓ.ም. መሠረት ያደረገው የሸማቾች ዋጋ መመዘኛ ኢንዱክስ አይነቶችና እያንዳንዱ ዋና ክፍል ያለው የወጪ ድርሻ በገፅ 6 ላይ ይታያል። ይህ ሠንጠረዥ እንደሚያሳየው የምግብ የመቶኛ የወጪ ድርሻ ታህሳስ 1993 ዓ.ም. ከነበረው 60 በመቶ ወደ 57 በመቶ ቀንሷል። በአንፃሩ ደግሞ ምግብ ነክ ያልሆነ መመዘኛ ኢንዱክስ ታህሳስ 1993 ዓ.ም. ከነበረው 40 በመቶ የወጪ ድርሻ ወደ 43 በመቶ ከፍ ብሏል። ባጠቃላይ ሲታይ በሁሉም ክልሎች ኢንዱክስ ላይ የምግብ የወጪ ድርሻ የማይናቅ ቅናሽ ያሳየ ሲሆን ምግብ ነክ ያልሆኑ የወጪ ድርሻ መጠነኛ እድገት አሳይታል።

የዘንድሮውና የአምናው ተመሳሳይ ወሮች የችርቻሮ ዋጋ መመዘኛ ጠቋሚ አሀዝ ንዕስር በአገር አቀፍ ደረጃ

Comparison of CPI Movements, Current vs Last year's Similar Months at Country Level

ከሠንጠረዥ 1(ሀ) መረዳት እንደሚቻለው የገንቦት ወር 2008 ዓ.ም የአገር አቀፍ ጠቅላላ የችርቻሮ ዋጋ ኢንዱክስ ከገንቦት ወር 1999 ዓ.ም ጠቅላላ ኢንዱክስ ጋር ሲነፃፀር በ39.1 ከመቶ ዕድገት አሳይቶአል። ለዚህ ዕድገት አስተዋጽኦ ያደረጉት ምግብ በ54.1 ከመቶ፣ መጠጥ በ22.8 ከመቶ፣ ሲጋራና ትምባሆ በ13.8 ከመቶ፣ ልብስና መጫሚያ በ19.5 ከመቶ፣ የቤት ኪራይ፣ የቤት መሥሪያ ዕቃዎች፣ ወሃና ኢነርጂ በ18.4 ከመቶ፣ የቤት ዕቃዎች፣ ቤት ማስገጫዎች፣ የቤት ቁሳቁስና የቤት ሠራተኛ ደመወዝ በ30.0 ከመቶ፣ ህክምና 9.4 ከመቶ፣ ትራንስፖርትና መገናኛ በ12.1 ከመቶ፣ መዝናኛና ትምህርት በ9.6 ከመቶ፣ የግል ንጽህናና የግል ቋሚ ዕቃዎች በ22.6 ከመቶ እና ሌሎች ዕቃዎች በ7.6 ከመቶ በየኢንዱክሶቻቸው ላይ ጭማሪ በማሳየታቸው ነው።

The May 2008 Country Level Consumer Price Index has increased by 39.1 percent as compared to May 2007 (Table 1(a)). This increase was attributed to the rise in the indices of its components; namely: Food by 54.1 percent, Beverages by 22.8 percent, Cigarettes and Tobacco by 13.8 percent, Clothing and Footwear by 19.5 percent, House Rent, Construction Materials, Water and Fuel and Power by 18.4 percent, Furniture, Furnishings, Household Equipment and Operation by 30.0 percent, Medical Care and Health by 12.1 percent, Transport and Communication by 11.9 percent, Recreation, Entertainment and Education by 9.6 percent, Personal Care Effects by 22.6 percent and Miscellaneous Goods by 7.6 percent.

ሠንጠረዥ 1(ለ) እንደሚያሳየው ለጠቅላላ ምግብ ኢንዱክስ 54.1 ከመቶ መጨመር ምክንያት የሆኑት የምግብ ክፍሎች ማለትም እህል በ79.9 ከመቶ፣ ጥራጥሬ በ27.4 ከመቶ፣ ዳቦና ሌሎች የተዘጋጁ ምግቦች በ42.1 ከመቶ፣ ሥጋ በ25.6 ከመቶ፣ ወተት፣ አይብና ዕንቁላል በ29.5 ከመቶ፣ በዘይትና ቅባቶች ኢንዱክስ ላይ በ54.6 ከመቶ፣ አትክልትና ፍራፍሬ በ60.7 ከመቶ፣ ቅመማ ቅመም በ69.0 ከመቶ፣ ድንችና ሌሎች ስራ ስሮች በ51.6 ከመቶ፣ ያልተቆላ ቡናና ሻይ ቅጠል በ32.9 ከመቶ፣ ሌሎች ምግቦች በ21.0 ከመቶ፣ የማስፈጫ አገልግሎት በ10.5 ከመቶ እና ከቤት ወጪ የተወሰዱ ምግቦች በ23.5 ከመቶ ዕድገት በየኢንዱክሶቻቸው ላይ በማሳየታቸው ነው።

The 54.1 percent increase in the Food index was observed due to rise in the indices of the components of Food index (Table 1(b)) namely: Cereals by (79.9 percent), Pulses (27.4 percent), Bread and Other Prepared Food (42.1 percent), Meat (25.6 percent), Milk, Cheese and Eggs (29.5 percent), oils and Fats by (54.6 percent), Vegetables and fruits (60.7 percent), Spices (69.0 percent), Potatoes, Other Tubers and Stems (51.6 percent), Coffee and Tea Leaves (32.9 percent), other Food Items (21.0 percent), Milling Charge by (10.5percent), and Food Taken Away from Home (23.5 percent).

የዘንድሮውና የአምናው ዓመት የችርቻሮ ዋጋ መመዘኛ ጠቋሚ አሀዝ ንፅፅር በአገር አቀፍ ደረጃ

Comparison of CPI Movements, Current vs Last year at Country Level

ከሠንጠረዥ 1(ሀ) መረዳት እንደሚቻለው የ1999 በጀት ዓመት የአገር አቀፍ ጠቅላላ የችርቻሮ ዋጋ መመዘኛ ኢንዱክስ ከ1998 በጀት ዓመት ጠቅላላ ኢንዱክስ ጋር ሲነፃፀር በ17.8 ከመቶ ዕድገት አሳይቶአል። ለዚህ ዕድገት አስተዋጽኦ ያደረጉት ምግብ በ18.9 ከመቶ፣ መጠጥ በ11.0 ከመቶ፣ ሲጋራና ትምባሆ በ7.7 ከመቶ፣ ልብስና መጫሚያ በ8.5 ከመቶ፣ የቤት ኪራይ፣ የቤት መሥሪያ ዕቃዎች፣ ወሃና ኢነርጂ በ21.4 ከመቶ፣ የቤት ዕቃዎች፣ ቤት ማስገጫዎች፣ የቤት ቁሳቁስና የቤት ሠራተኛ ደመወዝ በ13.6 ከመቶ፣ ህክምና በ5.3 ከመቶ፣ ትራንስፖርትና መገናኛ በ21.4 ከመቶ፣ መዝናኛና ትምህርት በ7.1 ከመቶ እና የግል ንጽህናና የግል ቋሚ ዕቃዎች በ16.8 ከመቶ በየኢንዱስትሪው ላይ ጭማሪ በማሳየታቸው ነው። ሆኖም በሌሎች ዕቃዎች ኢንዱክስ ላይ ምንም ለውጥ አልታየም።

The 2006/2007 Fiscal Year Country Level Consumer Price Index has increased by 17.8 percent as compared to 2005/2006 Fiscal Year (Table 1(a)). This increase was attributed to the rise in the indices of its components; namely: Food by 18.9 percent, Beverages by 11.0 percent, Cigarettes and Tobacco by 2.7 percent, Clothing and Foot wear by 8.5 percent, House Rent, Construction Materials, Water and Fuel and Power by 21.4 percent, Furniture, Furnishings, Household Equipment and Operation by 13.6 percent, Medical Care and Health by 5.3 percent, Recreation, Entertainment and Education by 7.1 percent, Transport and Communication by 21.4 percent, and Personal Care and Effects by 16.8 percent. However, no change was observed in the index of Miscellaneous Goods.

ሠንጠረዥ 1(ለ) እንደምያሳየው ለጠቅላላ ምግብ ኢንዱክስ በ18.9 ከመቶ መጨመር ምክንያት የሆኑት የምግብ ክፍሎች ማለትም እህል በ16.8 ከመቶ፣ ጥራጥራ በ27.2 ከመቶ፣ ዳቦና ሌሎች የተዘጋጁ ምግቦች በ20.4 ከመቶ፣ ሥጋ በ25.4 ከመቶ፣ ወተት አይብና ዕንቁላል በ15.9 ከመቶ፣ ዘይትና ቅባቶች በ15.7 ከመቶ፣ አትክልትና ፍራፍሬ በ29.9 ከመቶ፣ ቅመማ ቅመም በ25.7 ከመቶ፣ ድንችና ሌሎች ስራስሮች በ16.1 ከመቶ፣ ያልተቆላ ቡናና ሻይ ቅጠል በ13.5 ከመቶ፣ ሌሎች ምግቦች በ2.4 ከመቶ የማስፈጫ አገልግሎት በ10.5 ከመቶ እና ከቤት ወጪ የተወሰዱ ምግቦች በ20.5 ከመቶ ዕድገት በየኢንዱስትሪው ላይ በማሳየታቸው ነው።

Table 1(b) reveals that the 18.9 percent increase in the Food index was observed due to a rise in the indices of the components of Food index namely: Cereals (16.8 percent), Pulses (27.2 percent), Bread and Other Prepared Food (20.4 percent), Meat (25.4 percent), Milk, Cheese and Eggs (15.9 percent), Oils and Fats (15.7 percent), Vegetables and Fruits (29.9 percent), Spices (25.7 percent), Potatoes, Other Tubers and Stems (16.1 percent), Coffee and Tea Leaves by (13.5 percent), Other Food Items (2.4 percent), Milling Charge (10.5 percent).and Food Taken Away from Home (20.5 percent).

**የዘንድሮውና የአምናው ተመሳሳይ ወሮች
የችርቻሮ ዋጋ መመዘኛ ጠቋሚ አሀዝ ንፅፅር በአገር አቀፍና በክልሎች ደረጃ**
Comparison of CPI Movements, Current vs Last year at Country and
Regional Levels

ከሠንጠረዥ 2(ሀ) መረዳት እንደሚቻለው የገንቦት ወር 2008 ዓ.ም የአገር አቀፍ ጠቅላላ የችርቻሮ ዋጋ መመዘኛ ኢንዱክስ ከገንቦት ወር 1999 ዓ.ም ጠቅላላ ኢንዱክስ ጋር ሲነፃፀር በ39.1 ከመቶ ዕድገት አሳይቶአል። ለዚህ ዕድገት አስተዋጽኦ ያደረጉት አዲስ አበባ 31.4 ከመቶ፣ አፋር 31.8 ከመቶ፣ አማራ 33.7 ከመቶ፣ ቤኔሻንጉል ጉሙዝ 40.4 ከመቶ፣ ድሬዳዋ 31.2 ከመቶ፣ ጋምቤላ 28.1 ከመቶ፣ ሐረሪ 37.6 ከመቶ፣ ኦሮሚያ 45.1 ከመቶ፣ ደቡብ ብሄሮች፣ ብሄረሰቦችና ሕዝቦች 42.7 ከመቶ፣ ሶማሌ 34.5 ከመቶ እና ትግራይ 37.4 ከመቶ በጠቅላላ ኢንዱክሶቻቸው ላይ ጭማሪ በማሳየታቸው ነው።

Table 2(a) also displays that the May 2008 Country level General Consumer Price Index has increased by 39.1 percent as compared to May 2007. This increase was attributed to the rise in the indices of its constituent regions; namely: Addis Ababa 31.4percent, Afar 31.8 percent, Amhara 33.7 percent, Benishangul Gumuz 40.4 percent, Dire Dawa 31.2 percent, Gambela 28.1 percent, Harari 37.6 percent, Oromia 45.1 percent, SNNP 42.7 percent, Somali 34.5 percent and Tigray 37.4 percent.

ሠንጠረዥ 2(ለ) እንደሚያሳየው አገር አቀፍ ጠቅላላ የምግብ ዋጋ መመዘኛ ኢንዱክስ 54.1 ከመቶ መጨመር ምክንያት የሆኑት አዲስ አበባ 45.9 ከመቶ፣ አፋር 47.1 ከመቶ፣ አማራ 47.2 ከመቶ፣ ቤኔሻንጉል ጉሙዝ 55.8 ከመቶ፣ ድሬዳዋ 44.0 ከመቶ፣ ጋምቤላ 37.7 ከመቶ፣ ሐረሪ 51.9 ከመቶ፣ ኦሮሚያ 61.3 ከመቶ፣ ደቡብ ብሄሮች፣ ብሄረሰቦችና ሕዝቦች 56.3 ከመቶ፣ ሶማሌ 46.4 ከመቶ እና ትግራይ 52.1 ከመቶ በጠቅላላ ኢንዱክሶቻቸው ላይ ጭማሪ በማሳየታቸው ነው።

Table 2(b) reveals that the 54.1 percent increase in the country level Food index was observed due to a rise in the indices of the regions namely: Addis Ababa 45.9 percent, Afar 47.1 percent, Amhara 47.2 percent, Benishangul Gumuz 55.8 percent, Dire Dawa 44.0 percent, Gambela 37.7 percent, Harari 51.9 percent, Oromia 61.3 percent, SNNP 56.3 percent, Somali 46.4 percent and Tigray 52.1 percent.

**የዘንድሮውና የአምናው ዓመት የችርቻሮ ዋጋ መመዘኛ ጠቋሚ አሀዝ
ንፅፅር በአገር አቀፍና በክልሎች ደረጃ**
Comparison of CPI Movements, Current vs Last year at Country and
Regional Levels

ከሠንጠረዥ 2(ሀ) መረዳት እንደሚቻለው የ1999 በጀት ዓመት የአገር አቀፍ ጠቅላላ የችርቻሮ ዋጋ መመዘኛ ኢንዱክስ ከ1998 በጀት ዓመት ጠቅላላ ኢንዱክስ ጋር ሲነፃፀር በ17.8 ከመቶ ዕድገት አሳይቶአል። ለዚህ ዕድገት አስተዋጽኦ ያደረጉት አዲስ አበባ በ38.0 ከመቶ፣ አፋር በ32.0 ከመቶ፣ አማራ በ12.4 ከመቶ፣ ቤኔሻንጉል ጉሙዝ በ10.4 ከመቶ፣ ድሬዳዋ በ34.5 ከመቶ፣ ጋምቤላ በ13.3 ከመቶ፣ ሐረሪ በ25.4 ከመቶ፣ ኦሮሚያ በ14.3 ከመቶ፣ ደቡብ ብሄሮች፣ ብሄረሰቦችና ሕዝቦች በ24.1 ከመቶ፣ ሶማሌ በ23.0 ከመቶ እና ትግራይ በ22.2 ከመቶ በጠቅላላ ኢንዱክሶቻቸው ላይ ጭማሪ በማሳየታቸው ነው።

Table 2(a) also displays that the 2006/2007 Fiscal Year Country level General Consumer Price Index has increased by 17.8 percent as compared to 2005/2006 Fiscal Year. This increase was attributed to the rise in the indices of its constituent regions; namely: Addis Ababa 38.0 percent, Afar 32.0 percent, Amhara 12.4 percent, Benishangul Gumuz 10.4 percent, Dire Dawa 34.5 percent, Gambela 13.3 percent, Harari 25.4 percent, Oromia 14.3 percent, SNNP 24.1 percent, Somali 23.0 percent and Tigray 22.2 percent.

ሠንጠረዥ 2(ለ) እንደሚያሳየው አገር አቀፍ ጠቅላላ የምግብ ዋጋ መመዘኛ ኢንዱክስ በ18.9 ከመቶ መጨመር ምክንያት የሆኑት አዲስ አበባ በ25.2 ከመቶ፣ አፋር በ19.2 ከመቶ፣ አማራ በ17.0 ከመቶ፣ ቤኔሻንጉል ጉሙዝ በ12.7 ከመቶ፣ ድሬዳዋ በ14.9 ከመቶ፣ ጋምቤላ በ15.8 ከመቶ፣ ሐረሪ በ17.0 ከመቶ፣ ኦሮሚያ በ21.3 ከመቶ፣ ደቡብ ብሄሮች፣ ብሄረሰቦችና ሕዝቦች በ20.7 ከመቶ፣ ሶማሌ 8.5 ከመቶ እና ትግራይ በ10.2 ከመቶ በጠቅላላ ኢንዱክሶቻቸው ላይ ጭማሪ በማሳየታቸው ነው።

Table 2 (b) reveals that the 18.9 percent increase in the country level Food index was observed due to a rise in the indices of the regions namely: Addis Ababa (25.2 percent), Afar (19.9 percent), Amhara (17.0 percent), Benishangul-Gumuz (12.7 percent), Dire Dawa (14.9 percent), and Gambela (15.8 percent), Harari (17.0 percent), Oromia (21.3 percent), SNNP (20.7 percent), Somali (8.5 percent) and Tigray (10.2 percent).

የግንቦት ወር 2000 ዓ.ም. የዋጋ ግሽበት ሁኔታ May 2008 Inflation Rate

ከሠንጠረዥ #ሐ; መረዳት እንደሚቻለው በግንቦት ወር 2000 ዓ.ም. የተመዘገበው አገራዊ አጠቃላይ የዋጋ ግሽበት 21.8 በመቶ ሲሆን ይህ አሀዝ በግንቦት 1999 በጀት ዓመት ከታየው 15.5 በመቶ አጠቃላይ የዋጋ ግሽበት ጋር ሲነፃፀር በ6.3 ጭማሪ አሳይቷል። በተመሳሳይ ሁኔታ በግንቦት ወር 2000 ዓ.ም. የተመዘገበው አገራዊ የምግብ የዋጋ ግሽበት 29.7 በመቶ ሲሆን አገራዊ የምግብ ነክ ያልሆኑ የዋጋ ግሽበት ደግሞ 11.4 በመቶ ሆኗል።

በግንቦት ወር 2000 ዓ.ም. የተመዘገበው 29.7 በመቶ የምግብ የዋጋ ግሽበት ከግንቦት 1999 በጀት ዓመት ከታየው 16.9 ጋር ሲነፃፀር 12.8 ጭማሪ አሳይቷል። ለዚህም አገራዊ የምግብ የዋጋ ግሽበት መጨመር ምክንያት የሆኑት የተለያዩ የምግብ ክፍሎች ማለትም በእህል፣ በጥራጥራ፣ በሥጋ፣ በዘይትና ቅባቶች (በተለይም ቅቤ)፣ በአይብና ዕንቁላል፣ ቅመማ ቅመም (በተለይም በርበሬና ሚጥሚጣ)፣ ድንችና ሌሎች ሥራሥሮች፣ ሌሎች ምግቦች እና ከቤት ወጪ የተወሰዱ ምግቦች ዋጋ ላይ ከፍተኛ ጭማሪ በመከሰቱ ነው።

ሠንጠረዥ #መ; ላይ ለማየት እንደሚቻለው ያልተጠበቀ በጣም ከፍተኛ የዋጋ ጭማሪ የታየው በእህል ዋጋ ላይ ስለሆነ፣ የእህል ዋጋ በታህሣሥ 1999 ዓ.ም. በነበረበት ቢሆን ኖሮ በግንቦት ወር 2000 ዓ.ም. አጠቃላይ የዋጋ ግሽበት 16.1፣ የምግብ ደግሞ 19.5 ይሆን እንደነበር ለመረዳት ይቻላል።

As it indicated in the Table 'C' below the country level overall inflation rate (annual change based on 12 months Moving Average) stood at 21.8 percent in May 2008. This rate is 6.3 percentage points higher than the corresponding annual average rate of 15.5 percent at May 2007. Similarly, the country level food inflation rate stood at 29.7 percent and the country level Non-food inflation rate stood at 11.4 percent at May 2008.

The 29.7 percent Country level food inflation rate in May 2008 is 12.8 percentage points higher than that of 16.9 percent inflation rate at May 2007. This higher increase in food inflation rate was due to the increase in price of the food components like cereals, pulses, Meat, oil and fat (especially butter), milk and egg, vegetable and fruits, spices (specially pepper whole and chilies), Potatoes & Other Tubers and Stems, Other food Items and food taken away from home.

However, as shown in Table D, if the unexpectedly very high price increases in Cereals were constant to the base period of December 2006, over all and food inflation rate could have been 16.1 percent and 19.5 percent, respectively in May 2008.

ሠንጠረዥ ሐ: በአገር አቀፍ ደረጃ የዋጋ ግሽበት ሁኔታ

Table C: The Country Level General Inflation Rate

በጀት ዓመት (ወር)	የዋጋ ግሽበት ሁኔታ			Budget Year and months
	አጠቃላይ የዋጋ ግሽበት	የምግብ የዋጋ ግሽበት	የምግብ ነክ ያልሆኑ የዋጋ ግሽበት	
የ1999 በጀት ዓመት በወራት				The 2006/7 Budget Year in Months
መስከረም 1999	10.9	12.7	8.4	September 2006
ጥቅምት 1999	11.3	13.0	8.9	October 2006
ህዳር 1999	11.7	13.3	9.5	November 2006
ታህሳስ 1999	12.3	13.6	10.4	December 2006
ጥር 1999	12.9	14.0	11.3	January 2007
የካቲት 1999	13.5	14.5	12.0	February 2007
መጋቢት 1999	14.2	15.3	12.7	March 2007
ሚያዝያ 1999	15.2	16.4	13.4	April 2007
ግንቦት 1999	15.5	16.9	13.5	May 2007
ሰኔ 1999	15.8	17.5	13.5	June 2007
የ2000 በጀት ዓመት በወራት				The 2007/8 Budget Year in Months
ሐምሌ 1999	15.9	17.9	13.2	July 2007
ነሐሴ 1999	16.1	18.6	12.8	August 2007
መስከረም 2000	16.5	19.7	12.3	September 2007
ጥቅምት 2000	16.9	20.6	11.9	October 2007
ኅዳር 2000	17.1	21.3	11.5	November 2007
ታህሳስ 2000	17.2	22.0	11.0	December 2007
ጥር 2000	17.5	22.8	10.5	January 2008
የካቲት 2000	18.0	23.7	10.5	February 2008
መጋቢት 2000	19.0	25.2	10.7	March 2008
ሚያዝያ 2000	19.9	26.6	10.8	April 2008
ግንቦት 2000	21.8	29.7	11.4	May 2008
Budget Year	Inflation Rate			
	Overall Inflation rate	Food Inflation rate	Non-food Inflation rate	

Revised (From January 2007 – November 2007)

ሠንጠረዥ መ: በአገር አቀፍ ደረጃ የዋጋ ግሽበት ሁኔታ የእህል ዋጋ በታህሳስ 1999 ዓ.ም በነበረበት ቢሆን

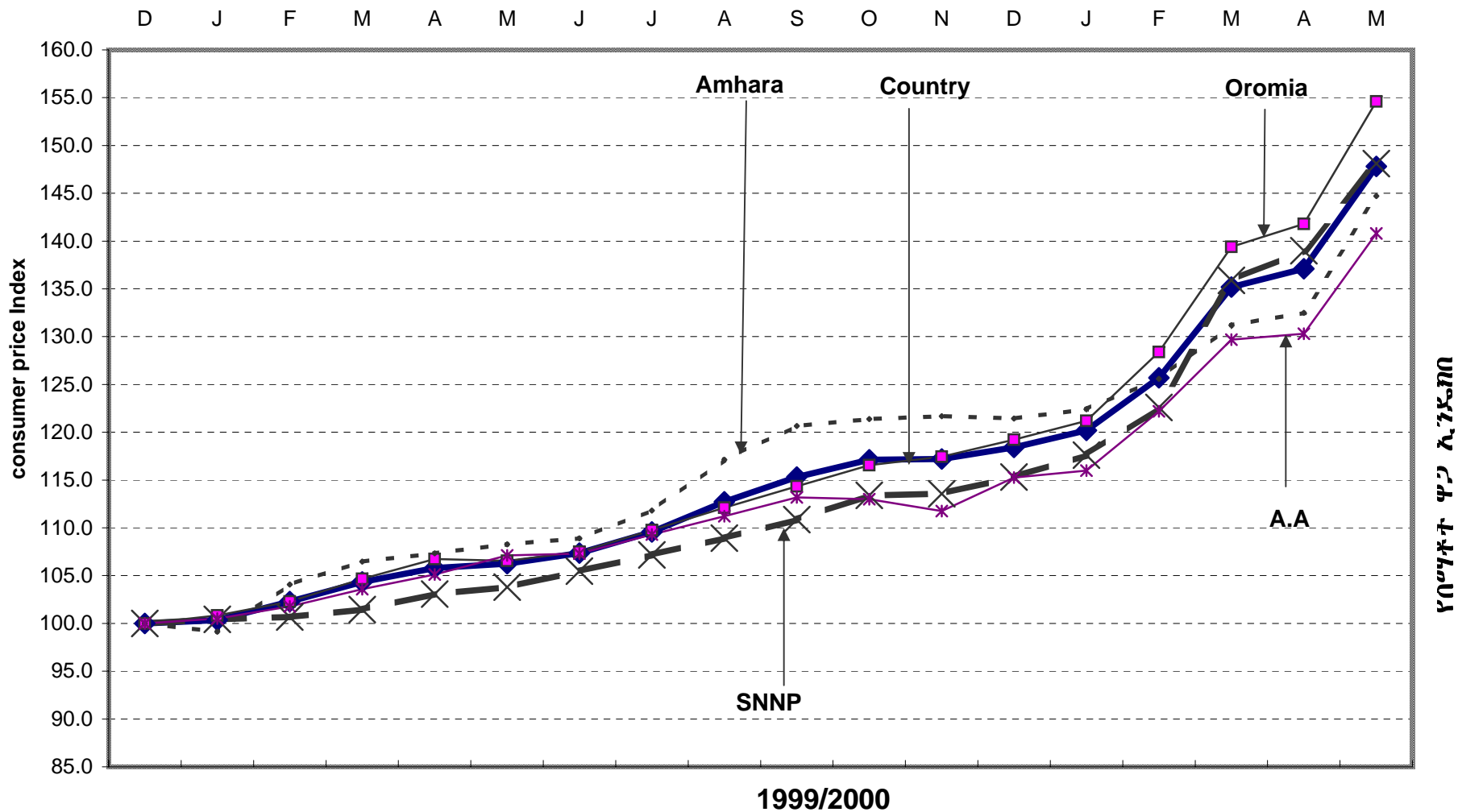
Table D: The Country Level General Inflation Rate Keeping the Cereal prices constant to the base price

በጀት ዓመት (ወር)	የዋጋ ግሽበት ሁኔታ			Budget Year and months
	አጠቃላይ የዋጋ ግሽበት	የምግብ የዋጋ ግሽበት	የምግብ ነክ ያልሆኑ የዋጋ ግሽበት	
የ1999 በጀት ዓመት በወራት				The 2006/7 Budget Year in Months
ጥቅምት 1999	11.3	13.0	8.9	October 2006
ህዳር 1999	11.7	13.3	9.5	November 2006
ታህሳስ 1999	12.3	13.6	10.4	December 2006
ጥር 1999	12.9	14.1	11.3	January 2007
የካቲት 1999	13.5	14.5	12.0	February 2007
መጋቢት 1999	14.2	15.3	12.7	March 2007
ሚያዝያ 1999	15.2	16.4	13.4	April 2007
ግንቦት 1999	15.5	16.8	13.5	May 2007
ሰኔ 1999	15.7	17.3	13.5	June 2007
የ2000 በጀት ዓመት በወራት				The 2007/8 Budget Year in Months
ሐምሌ 1999	15.7	17.6	13.2	July 2007
ነሐሴ 1999	15.8	18.0	12.8	August 2007
መስከረም 2000	15.9	18.6	12.3	September 2007
ጥቅምት 2000	15.9	18.9	11.9	October 2007
ኅዳር 2000	15.8	19.0	11.5	November 2007
ታህሳስ 2000	15.6	19.0	11.0	December 2007
ጥር 2000	15.3	19.0	10.5	January 2008
የካቲት 2000	15.4	19.1	10.5	February 2008
መጋቢት 2000	15.5	19.1	10.7	March 2008
ሚያዝያ 2000	15.5	19.0	10.8	April 2008
ግንቦት 2000	16.1	19.5	11.4	May 2008
Budget Year	Inflation Rate			
	Overall Inflation rate	Food Inflation rate	Non-food Inflation rate	

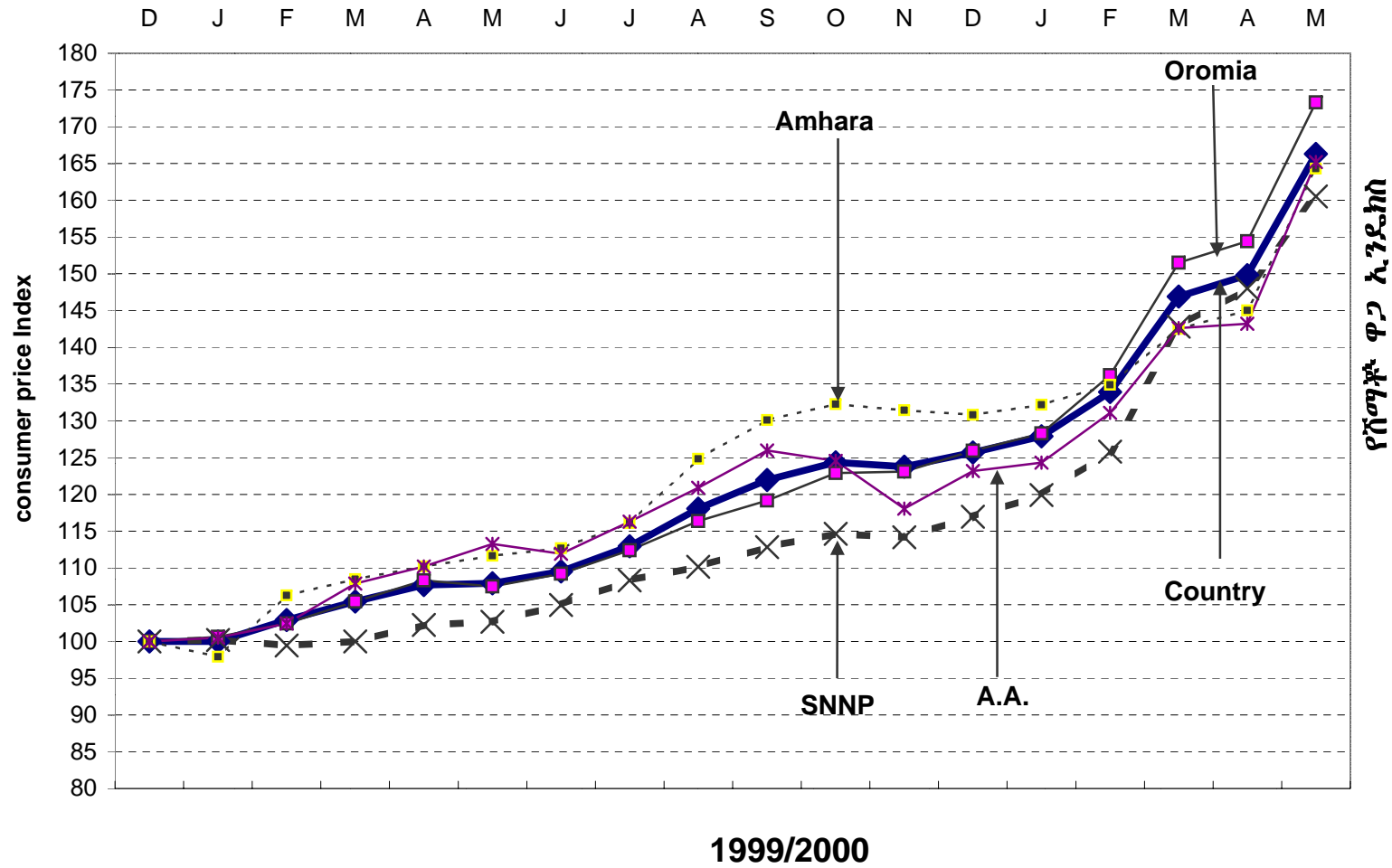
Revised (From January 2007 – November 2007)

General CPI for Country Level and Major Regions

ጠቅላላ የሽያጭ ስርዓት አጠቃላይ ለአገር አቀፍና ለዋና ዋና ክልሎች
2007/2008



Food CPI for Country Level and Major Regions
 የምግብ የሽያጭ ዋጋ ኢንዱክስ ለአገር አቀፍና ለዋና ዋና ክልሎች
 2007/2008



ወንጠረዥ 1ሀ፡- ጠቅላላ የ ሽግግር ዋጋ መመዘኛ ኢንዱክስ በሥራ የተከተቱ ክፍሎች በአገር አቀፍ ደረጃ
 ታህሳስ 1999 = 100

Table 1a: General Consumer Price Index and Its Components at Country Level
 December 2006 = 100

ወርና ዓመት	ጠቅላላ ኢንዱክስ General Index	ጠቅላላ የምግብ ኢንዱክስ Food Total	ጠቅላላ የምግብ ክፍል ኢንዱክስ Non-Food Total	Non-food Consumer Price Index Components											Month and Year	
				የምግብ ክፍል ክፍሎች Beverages	ሲጃራና ትታባብ Cigarettes and Tobacco	ልብና መጫጫያ Clothing and Footwear	የቤት ኪራይ፣ የቤት መሥሪያ ስቃዎች፣ውሃ፣ ኳጅናሃይል House Rent, Construction Materials, Water, and Fuel and Power	የቤት ስቃዎች የቤት ግንባራዎች የቤት ቀበቆሎች የቤት ሠራተኛ ደመወዝ Furniture, Furnishings, Household Equipment and Operation	ሕክምና Medical Care and Health	ትራንስፖርትና ጠገናኛ Transport and Communication	መገናኛና ትምህርት Recreation, Entertainment and Education	የግል ንጹህናና የግል ጽጌ ስቃዎች Personal Care and Effects	ሌሎች ስቃዎች Miscellaneous Goods			
ታህሳስ 1999	100.0	100.0	100.0	100.0	100.0	100.0	100.0	100.0	100.0	100.0	100.0	100.0	100.0	100.0	100.0	December 2006
ጥር 1999	100.4	100.0	100.9	97.0	100.8	101.6	100.8	102.4	102.5	99.5	100.3	100.3	100.3	100.9	100.9	January 2007
ፍቅረት 1999	102.3	102.9	101.5	99.0	101.7	102.3	101.0	104.9	104.0	99.9	100.4	100.9	100.5	100.5	100.5	February "
መጋቢት 1999	104.3	105.4	102.9	100.7	101.7	104.7	102.5	106.0	107.2	100.0	100.4	100.8	100.5	100.8	100.5	March "
ሚያዝያ 1999	105.8	107.7	103.3	103.3	101.1	106.0	102.1	107.6	107.2	100.4	100.7	100.9	100.9	100.9	100.9	April "
ግንቦት 1999	106.3	107.9	104.1	103.4	101.8	105.9	103.4	109.1	107.4	100.3	100.8	103.2	101.1	101.1	101.1	May "
ሰኔ 1999	107.4	109.5	104.5	104.6	101.5	106.3	103.7	109.7	107.1	101.1	100.8	102.3	101.6	101.6	101.6	June "
2000																2007/2008
ሐምሌ 1999	109.6	113.0	105.1	103.1	101.6	108.2	104.1	111.6	105.8	100.5	100.7	104.1	101.6	101.6	101.6	July "
ኔሐሴ 1999	112.7	118.1	105.6	103.4	102.9	108.8	104.6	111.7	108.5	100.5	102.1	104.2	102.1	102.1	102.1	August "
መስከረም 2000	115.3	121.9	106.5	104.3	102.1	111.8	104.4	114.2	109.0	100.7	104.7	106.0	102.9	102.9	102.9	September "
ጥቅምት 2000	117.1	124.4	107.5	104.4	101.6	112.4	105.9	115.8	108.8	100.5	105.6	107.1	103.2	103.2	103.2	October "
ጎሳር 2000	117.2	123.8	108.5	106.0	101.7	114.0	106.6	118.6	108.9	101.1	105.4	105.7	103.4	103.4	103.4	November "
ታህሳስ 2000	118.4	125.7	108.8	108.1	101.1	114.5	106.7	120.1	109.7	100.3	104.8	107.0	102.5	102.5	102.5	December "
ጥር 2000	120.2	127.9	109.9	109.2	102.5	116.1	107.4	122.6	111.4	99.9	106.8	109.6	103.9	103.9	103.9	January 2008
ፍቅረት 2000	125.7	133.9	114.8	113.2	112.1	118.9	112.6	130.6	112.6	112.0	108.3	114.1	104.4	104.4	104.4	February "
መጋቢት 2000	135.2	146.9	119.6	118.8	119.9	121.0	119.5	135.4	114.2	112.4	110.2	118.4	106.2	106.2	106.2	March "
ሚያዝያ 2000	137.2	149.8	120.5	120.5	114.0	121.9	120.3	138.0	116.1	112.4	110.9	120.6	106.8	106.8	106.8	April "
ግንቦት 2000	147.8	166.3	123.3	126.9	115.9	126.5	122.4	141.7	117.5	112.4	110.5	126.5	108.8	108.8	108.8	May "

Revised from January 2007 - November 2007

ሠንጠረዥ 20፡- ጠቅላላ የ ሽግግር ዋጋ መጠኖች ኢንፍሊኒን ግጥም በአገር አቀፍ እና በክልሎች ደረጃ
 ታህሳስ 1999 = 100

Table 2a: Summary of General Consumer Price Indices at Country and Regional Levels
 December 2006=100

ወር ዓመት	Reporting Level												Month and Year	
	Eth.	A.A.	Afar	Amhara	B.Gumuz	D.Dawa	Gambela	Harari	Oromia	SNNP	Somalia	Tigray		
ታህሳስ 1999	100.0	100.0	100.0	100.0	100.0	100.0	100.0	100.0	100.0	100.0	100.0	100.0	100.0	December 2006
ጥር 1999	100.4	100.5	101.3	99.1	102.8	100.3	100.8	101.4	100.8	100.4	101.0	100.8	100.8	January 2007
ፍቅሩት 1999	102.3	101.8	102.4	104.1	103.3	101.2	102.0	98.9	102.3	100.7	101.7	101.3	101.3	February "
መጋቢት 1999	104.3	103.6	110.6	106.5	105.1	106.6	105.6	101.1	104.7	101.5	101.9	103.9	103.9	March "
ሚያዝያ 1999	105.8	105.1	108.6	107.3	107.1	107.1	107.8	99.9	106.7	103.1	101.2	105.1	105.1	April "
ግንቦት 1999	106.3	107.1	106.7	108.3	108.3	108.2	105.9	101.0	106.5	103.8	101.5	106.7	106.7	May "
ሰኔ 1999	107.4	107.3	110.1	108.9	108.8	108.9	106.4	101.5	107.5	105.5	102.6	108.8	108.8	June "
2000														2007/2008
ሐምሌ 1999	109.6	109.3	111.9	111.8	113.6	110.9	109.2	103.9	109.7	107.2	103.9	110.3	110.3	July "
ኔሐሴ 1999	112.7	111.2	116.6	117.1	121.3	114.2	113.9	107.7	112.1	108.9	107.3	115.5	115.5	August "
መስከረም 2000	115.3	113.2	118.7	120.7	127.0	116.7	116.4	108.9	114.3	110.9	107.4	121.4	121.4	September "
ጥቅምት 2000	117.1	113.0	119.1	121.4	128.3	116.6	116.4	110.1	116.6	113.4	110.1	125.7	125.7	October "
ኅዳር 2000	117.2	111.8	118.1	121.7	129.7	116.8	117.2	109.1	117.4	113.6	109.6	120.1	120.1	November "
ታህሳስ 2000	118.4	115.3	118.5	121.4	131.3	119.0	118.2	109.3	119.2	115.3	109.4	120.7	120.7	December "
ጥር 2000	120.2	116.0	119.9	122.4	135.2	122.2	120.0	111.8	121.2	117.6	111.9	122.6	122.6	January 2008
ፍቅሩት 2000	125.7	122.2	122.4	125.6	142.5	126.0	124.3	116.8	128.4	122.6	121.7	127.7	127.7	February "
መጋቢት 2000	135.2	129.7	126.8	131.2	148.2	131.1	125.9	123.9	139.4	135.9	125.4	137.7	137.7	March "
ሚያዝያ 2000	137.2	130.3	127.8	132.5	147.1	133.5	123.6	127.6	141.9	139.1	127.4	139.7	139.7	April "
ግንቦት 2000	147.8	140.8	140.6	144.7	152.1	142.0	135.7	139.0	154.6	148.1	136.5	146.6	146.6	May "

Revised from January 2007 - November 2007

ሠንጠረዥ 3 ሀ:- ጠቅላላ የሽያጭ ዋጋ መመዘኛ ኢንዱስትሪ ቦሎኒ የተካተቱ ክፍሎች ለአዲስ አበባ ከተማ መስተዳድር
 ታህሳስ 1999 = 100

Table 3a: General Consumer Price Index and Its Components for Addis Ababa City Administration
 December 2006 = 100

ወርና ዓመት	ጠቅላላ ኢንዱስትሪ	ጠቅላላ የምግብ ኢንዱስትሪ	ጠቅላላ የምግብ ካል-ኢንዱስትሪ	Non-food Consumer Price Index Components											Month and Year
				መጠጥ	ቢጃራና ትምባሆ	ልብና መጫሚያ	የቤት ኪራይ የቤት መሥሪያ ስቃዎች+ውሃ ንጹህነት	የቤት ስቃዎች የቤት ግዝጊያዎች የቤት ቁሳቁስና የቤት ሠራተኛ ደመወዝ	ሕክምና	ትራንስፖርትና መገናኛ	መዝናኛና ትምህርት	የግል ጽሁፍ ስቃዎች	ሌሎች ስቃዎች		
	General Index	Food Total	Non-Food Total	Beverages	Cigarettes and Tobacco	Clothing and Footwear	House Rent, Construction Materials, Water, and Fuel and Power	Furniture, Furnishings, Household Equipment and Operation	Medical Care and Health	Transport and Communication	Recreation, Entertainment and Education	Personal Care and Effects	Miscellaneous Goods		
ታህሳስ 1999	100.0	100.0	100.0	100.0	100.0	100.0	100.0	100.0	100.0	100.0	100.0	100.0	100.0	100.0	December 2006
ጥር 1999	100.5	100.5	100.5	102.1	100.1	102.9	100.5	103.4	103.9	98.3	96.5	100.3	100.1	100.1	January 2007
የካቲት 1999	101.8	102.4	101.3	103.5	102.0	106.3	101.3	103.8	107.6	98.1	94.8	102.6	100.0	100.0	February "
መጋቢት 1999	103.6	107.9	100.6	107.0	101.4	104.4	99.3	104.8	108.0	98.1	95.8	101.8	97.7	97.7	March "
ሚያዝያ 1999	105.1	110.2	101.6	104.5	102.3	104.6	101.2	108.2	108.4	98.1	95.5	102.8	97.6	97.6	April "
ግንቦት 1999	107.1	113.2	102.8	110.6	102.8	107.2	101.2	110.3	115.5	98.4	97.4	103.4	98.6	98.6	May "
ሰኔ 1999	107.3	111.9	104.1	109.9	101.7	109.5	102.8	112.9	115.2	98.3	96.5	106.4	102.4	102.4	June "
2000															2007/2008
ሐምሌ 1999	109.3	116.3	104.5	111.8	100.4	110.0	103.4	112.8	114.9	98.2	96.9	106.1	102.4	102.4	July "
ነሐሴ 1999	111.2	120.9	104.5	112.3	101.5	111.0	102.9	112.3	113.5	98.5	97.7	106.6	102.4	102.4	August "
መስከረም 2000	113.2	126.0	104.3	117.6	101.4	114.9	98.7	112.8	118.0	98.2	102.4	108.5	101.0	101.0	September "
ጥቅምት 2000	113.0	124.6	105.0	117.5	102.8	118.7	98.9	114.8	118.6	97.9	100.8	110.1	101.0	101.0	October "
ኅዳር 2000	111.8	118.1	107.4	118.7	102.4	128.5	98.9	121.7	123.3	97.6	101.4	114.0	102.4	102.4	November "
ታህሳስ 2000	115.3	123.2	109.7	124.8	101.3	131.3	99.7	132.5	122.8	97.6	104.2	115.0	101.1	101.1	December "
ጥር 2000	116.0	124.3	110.2	127.1	102.0	132.0	99.6	136.0	122.8	97.6	102.0	116.1	104.6	104.6	January 2008
የካቲት 2000	122.2	131.1	116.0	133.0	117.2	133.0	105.3	141.5	128.5	107.9	109.0	120.8	102.2	102.2	February "
መጋቢት 2000	129.7	142.6	120.7	134.8	121.3	136.1	114.1	146.7	132.5	109.2	107.6	127.1	106.1	106.1	March "
ሚያዝያ 2000	130.3	143.2	121.4	134.2	117.3	136.2	115.2	147.5	131.4	108.4	110.1	129.5	107.6	107.6	April "
ግንቦት 2000	140.8	165.2	123.8	143.6	118.6	138.8	117.3	153.3	134.6	108.4	110.5	132.4	110.9	110.9	May "

Revised from January 2007 - November 2007

ወንጠረዥ 4ሀ፡- ጠቅላላ የ ሽንት ጥጋ መመዘኛ ኢንዱስትሪ ቢሮ የተካተቱ ክፍሎች ለላዕሮ ክልላዊ መንግሥት
 ታህሳስ 1999 = 100

Table 4a: General Consumer Price Index and Its Components for the Afar Regional State
 December 2006 = 100

ወርና ዓመት	ጠቅላላ ኢንዱስትሪ General Index	ጠቅላላ ምግብ ኢንዱስትሪ Food Total	ጠቅላላ ምግብ ነፃ የልሆኑ ኢንዱስትሪ Non-Food Total	ምግብ ነፃ የልሆኑ የኢንዱስትሪ ክፍሎች Non-food Consumer Price Index Components											Month and Year	
				መጠጥ Beverages	ቢጃና ትምባህ Cigarettes and Tobacco	ላብና መጫሚያ Clothing and Footwear	የቤት ቢራይ የቤት መሥሪያ ዕቃዎች+ውሃ ንጸጅናሃይል House Rent, Construction Materials, Water, and Fuel and Power	የቤት ዕቃዎች የቤት ግዝጊታዎች የቤት ቁሳቁሳዎች የቤት ሠራተኛ ደመወዝ Furniture, Furnishings, Household Equipment and Operation	ሕክምና Medical Care and Health	ትራንስፖርትና መገናኛ Transport and Communication	መዝናኛና ትምህርት Recreation, Entertainment and Education	የግል ጽግራ ዕቃዎች Personal Care and Effects	ሌሎች ዕቃዎች Miscellaneous Goods			
ታህሳስ 1999	100.0	100.0	100.0	100.0	100.0	100.0	100.0	100.0	100.0	100.0	100.0	100.0	100.0	100.0	100.0	December 2006
ጥር 1999	101.3	101.4	101.1	100.0	99.0	102.3	101.7	98.4	100.8	102.4	99.2	99.9	100.0	100.0	100.0	January 2007
የካቲት 1999	102.4	102.0	102.8	102.3	100.3	106.3	102.2	100.0	100.8	112.0	88.0	100.6	100.0	100.0	100.0	February "
መጋቢት 1999	110.6	110.2	111.0	104.1	101.6	107.6	122.2	97.7	96.7	111.6	93.9	100.6	100.0	100.0	100.0	March "
ሚያዝያ 1999	108.6	113.4	102.9	105.7	100.0	105.0	103.1	100.3	97.9	113.8	85.0	100.9	100.0	100.0	100.0	April "
ግንቦት 1999	106.7	109.9	102.8	105.7	102.8	106.7	101.8	101.1	96.5	113.2	84.7	99.3	100.0	100.0	100.0	May "
ሰኔ 1999	110.1	114.7	104.6	105.7	100.0	110.0	102.8	102.9	97.8	116.6	87.5	100.7	100.0	100.0	100.0	June "
2000																2007/2008
ሐምሌ 1999	111.9	118.7	103.7	106.5	100.0	109.6	100.1	104.5	98.1	117.9	87.4	100.0	100.0	100.0	100.0	July "
ኔሐሴ 1999	116.6	125.5	106.0	109.0	99.7	111.4	103.4	106.6	98.1	119.1	87.9	101.4	100.0	100.0	100.0	August "
መስከረም 2000	118.7	128.5	107.1	109.0	100.0	111.5	106.2	106.2	100.0	120.3	87.6	99.0	100.0	100.0	100.0	September "
ጥቅምት 2000	119.1	129.1	107.3	106.8	100.0	110.0	106.6	105.8	98.1	120.5	93.9	106.9	100.0	100.0	100.0	October "
ንሐር 2000	118.1	126.5	108.0	109.3	100.0	112.0	106.6	106.4	99.4	120.5	91.8	110.2	100.0	100.0	100.0	November "
ታህሳስ 2000	118.5	127.8	107.5	109.3	99.3	111.9	106.4	105.1	100.2	118.8	90.1	108.0	100.0	100.0	100.0	December "
ጥር 2000	119.9	128.7	109.5	108.3	99.3	114.0	107.9	108.8	102.5	121.8	94.0	110.7	100.0	100.0	100.0	January 2008
የካቲት 2000	122.4	131.1	112.1	107.5	103.3	116.3	109.8	114.6	100.0	130.8	94.6	107.4	100.0	100.0	100.0	February "
መጋቢት 2000	126.8	137.9	113.6	109.0	106.1	117.7	109.3	122.1	100.6	130.8	95.8	109.2	100.0	100.0	100.0	March "
ሚያዝያ 2000	127.8	139.4	114.1	110.3	105.7	118.3	108.5	125.7	106.9	130.8	96.0	108.2	100.0	100.0	100.0	April "
ግንቦት 2000	140.6	161.7	115.6	111.5	107.0	119.8	110.3	128.2	102.3	130.3	95.3	110.7	100.0	100.0	100.0	May "

Revised from January 2007 - November 2007

ወንጠረኛ SU:- ጠቅላላ የ ሽግግር ዋጋ መጠኛ ኢንዱክስ በሥሩ የተተካ ክፍሎች ለለግራ ክልል መገንጠያ
 ታህሳስ 1999 = 100

Table 5a: General Consumer Price Index and Its Components for the Amhara Regional State
 December 2006 = 100

ወር ዓመት	ጠቅላላ ኢንዱክስ	ጠቅላላ ምግብ ኢንዱክስ	ጠቅላላ ምግብ ነፃ ኢንዱክስ	Non-food Consumer Price Index Components											Month and Year
				ምግብ ነፃ ያልሆኑ መጠጥ	ቢጃራና ትምባሆ	ልብሽና መጫጫያ	የቤት ኪራይና የቤት መሥሪያ ዕቃዎች+ውሃና ነጻጅናሃይል	የቤት ዕቃዎች የቤት ግንቢያዎች የቤት ቁሳቁስና የቤት ሠራተኛ ደመወዝ	ሕክምና	ትራንስፖርትና መገናኛ	መዝናኛና ትምህርት	የግል ገንቢናና የግል ቋጫ ዕቃዎች	ሌሎች ዕቃዎች		
General Index	Food Total	Non-Food Total	Beverages	Cigarettes and Tobacco	Clothing and Footwear	House Rent, Construction Materials, Water, and Fuel and Power	Furniture, Furnishings, Household Equipment and Operation	Medical Care and Health	Transport and Communication	Recreation, Entertainment and Education	Personal Care and Effects	Miscellaneous Goods			
ታህሳስ 1999	100.0	100.0	100.0	100.0	100.0	100.0	100.0	100.0	100.0	100.0	100.0	100.0	100.0	100.0	December 2006
ጥር 1999	99.1	97.9	101.1	100.1	101.3	102.8	101.0	100.8	99.2	99.5	99.7	100.8	100.1	100.1	January 2007
የኮቲት 1999	104.1	106.2	100.5	101.5	100.5	97.3	101.4	100.7	103.8	98.5	101.6	100.5	100.1	100.1	February "
መጋቢት 1999	106.5	108.5	103.2	100.5	107.8	101.3	104.9	101.7	102.0	99.4	99.6	103.4	100.1	100.1	March "
ሚያዝያ 1999	107.3	110.2	102.6	100.8	107.3	102.2	103.0	104.1	99.7	99.9	102.6	103.7	100.1	100.1	April "
ግንቦት 1999	108.3	111.6	102.7	103.7	109.3	103.6	102.3	103.9	99.1	100.1	103.3	106.7	100.1	100.1	May "
ሰኔ 1999	108.9	112.7	102.7	104.2	108.0	103.2	102.0	106.0	99.6	109.2	102.9	100.9	100.1	100.1	June "
2000															2007/2008
ሐምሌ 1999	111.8	116.1	104.8	104.0	106.5	106.4	104.8	107.5	100.7	99.4	104.1	102.8	100.1	100.1	July "
ክሐሴ 1999	117.1	124.8	104.5	104.0	108.0	107.3	103.6	108.4	108.7	99.3	103.2	103.4	100.1	100.1	August "
መስከረም 2000	120.7	130.1	105.1	104.1	108.5	109.3	103.9	109.5	105.7	98.9	103.3	104.9	100.1	100.1	September "
ጥቅምት 2000	121.4	132.3	103.5	101.1	107.2	106.9	100.9	113.5	108.4	99.8	105.6	110.6	99.9	99.9	October "
ገዳር 2000	121.7	131.4	105.6	104.7	105.0	105.8	104.5	115.8	106.4	99.6	105.5	110.5	100.0	100.0	November "
ታህሳስ 2000	121.4	130.8	106.1	104.6	108.5	106.2	104.9	115.6	107.8	100.7	106.6	111.9	101.7	101.7	December "
ጥር 2000	122.4	132.2	106.5	106.9	108.0	107.2	104.5	117.3	111.7	99.5	108.4	115.0	102.8	102.8	January 2008
የኮቲት 2000	125.6	134.9	110.4	111.4	120.6	111.5	107.1	125.9	117.1	116.6	109.9	123.1	102.7	102.7	February "
መጋቢት 2000	131.2	142.5	112.6	115.7	128.4	113.7	108.9	131.2	118.8	116.5	110.5	126.8	102.8	102.8	March "
ሚያዝያ 2000	132.5	145.0	111.9	117.4	127.1	111.8	107.9	131.0	124.0	116.5	112.8	127.0	103.3	103.3	April "
ግንቦት 2000	144.7	164.3	112.5	128.9	129.9	112.7	106.3	135.3	121.1	116.5	114.3	139.6	102.9	102.9	May "

Revised from January 2007 - November 2007

ወንጠራዎች ስር፡- ጠቅላላ የ ሽንትዎች ዋጋ መጠኛ ሊንደክስ ስራዎች የተካተቱ ክፍሎች ለቤንሻንጉል ንዳዝ ክልል መንግሥት
 ታህሳስ 1999 = 100

Table 6a: General Consumer Price Index and Its Components for the Benishangul Gumuz Regional State
 December 2006 = 100

ወርና ዓመት	ጠቅላላ ሊንደክስ General Index	ጠቅላላ የምግብ ሊንደክስ Food Total	ጠቅላላ የምግብ ክፍል ሊንደክስ Non-Food Total	Non-food Consumer Price Index Components											Month and Year	
				መጠጥ Beverages	ቢሾራና ትምባሆ Cigarettes and Tobacco	ላብሽ መጫሚያ Clothing and Footwear	የቤት ቢራይስ የቤት መሥሪያ ስቃዎች+ውሃ ንጹህናሃይል House Rent, Construction Materials, Water, and Fuel and Power	የቤት ስቃዎች የቤት ግንባታዎች የቤት ቁሳቁሶች የቤት ሠራተኛ ደመወዝ Furniture, Furnishings, Household Equipment and Operation	ሕክምና Medical Care and Health	ትራንስፖርትና መገናኛ Transport and Communication	መዝናኛና ትምህርት Recreation, Entertainment and Education	የግል ጽዕን ስቃዎች Personal Care and Effects	ሌሎች ስቃዎች Miscellaneous Goods			
ታህሳስ 1999	100.0	100.0	100.0	100.0	100.0	100.0	100.0	100.0	100.0	100.0	100.0	100.0	100.0	100.0	100.0	December 2006
ጥር 1999	102.8	99.1	107.7	100.8	100.0	100.8	121.9	98.9	98.9	100.0	100.5	100.4	101.2	101.2	101.2	January 2007
የካቲት 1999	103.3	100.0	107.7	101.7	99.0	105.4	119.0	100.1	99.2	100.0	100.8	99.6	99.9	99.9	99.9	February "
መጋቢት 1999	105.1	104.3	106.1	100.2	101.2	102.2	116.2	101.4	97.8	100.2	98.9	101.2	97.0	97.0	97.0	March "
ሚያዝያ 1999	107.1	105.3	109.5	101.7	107.4	106.1	121.1	104.5	99.5	99.8	103.8	100.2	101.2	101.2	101.2	April "
ግንቦት 1999	108.3	107.8	109.1	103.8	107.4	106.1	118.3	105.1	99.0	100.8	106.8	100.6	100.7	100.7	100.7	May "
ሰኔ 1999	108.8	108.8	108.7	105.1	107.4	106.0	118.0	102.9	99.2	101.2	103.8	101.6	101.2	101.2	101.2	June "
2000																2007/2008
ሐምሌ 1999	113.6	114.9	111.9	101.6	105.5	109.5	124.2	107.8	100.9	102.1	104.6	101.4	101.2	101.2	101.2	July "
ኔሐሴ 1999	121.3	123.2	118.7	101.9	109.3	112.2	142.6	107.3	99.0	102.1	104.2	101.6	101.2	101.2	101.2	August "
መስከረም 2000	127.0	133.4	118.5	101.4	109.0	112.1	141.1	107.1	104.6	102.1	108.3	103.1	100.6	100.6	100.6	September "
ጥቅምት 2000	128.3	134.6	119.9	102.7	106.9	113.1	143.7	108.0	107.1	102.1	108.1	103.8	101.2	101.2	101.2	October "
ንሐር 2000	129.7	135.7	121.7	104.1	108.1	120.1	143.6	109.8	107.9	101.1	107.9	107.5	102.9	102.9	102.9	November "
ታህሳስ 2000	131.3	139.1	120.9	110.5	112.4	120.7	137.9	111.5	111.3	100.0	106.2	109.6	102.4	102.4	102.4	December "
ጥር 2000	135.2	146.6	120.2	111.8	109.3	123.9	134.3	108.6	108.4	100.4	115.0	110.8	102.9	102.9	102.9	January 2008
የካቲት 2000	142.5	154.8	126.2	113.4	116.0	127.2	141.4	118.4	112.8	109.3	115.6	123.7	103.6	103.6	103.6	February "
መጋቢት 2000	148.2	161.2	131.1	120.1	116.9	135.2	147.3	120.8	118.1	109.3	117.5	125.5	105.1	105.1	105.1	March "
ሚያዝያ 2000	147.1	160.0	130.1	121.1	119.5	136.1	143.3	120.0	120.1	109.3	118.5	129.5	104.2	104.2	104.2	April "
ግንቦት 2000	152.1	167.9	131.2	122.4	120.5	137.2	144.3	122.1	118.1	109.3	120.3	130.7	106.5	106.5	106.5	May "

Revised from January 2007 - November 2007

ሠንጠረዥ 70:- ጠቅላላ የ ሽግግር ዋጋ መመዘኛ ኢንዱስትሪ ቢሮ የተካተቱ ክፍሎች ለድረጃ አስተዳደር ካውንሲል
 ታህሳስ 1999 = 100

Table 7a: General Consumer Price Index and Its Components for the Dire Dawa Administrative Council
 December 2006 = 100

ወርና ዓመት	ጠቅላላ ኢንዱስትሪ	ጠቅላላ የግብርና ኢንዱስትሪ	ጠቅላላ የግብርና ኢንዱስትሪ	Non-food Consumer Price Index Components											Month and Year	
				የግብርና ኢንዱስትሪ	ቤይትና ትምባህ	ልብና መጫጫ	የቤት ኪራይስ የቤት መሥሪያ ስቃዎች+ውሃ ነጻጅናሃይል	የቤት ስቃዎች የቤት ግንባታና የቤት ቁሳቁስ የቤት ሠራተኛ ደመወዝ	ሕክምና	ትራንስፖርትና መገናኛ	መዝናኛና ትምህርት	የግል ገደብና የግል ጽግ ድምጽ	ሌሎች ስቃዎች			
ታህሳስ 1999	100.0	100.0	100.0	100.0	100.0	100.0	100.0	100.0	100.0	100.0	100.0	100.0	100.0	100.0	100.0	December 2006
ጥር 1999	100.3	99.2	101.5	95.2	100.7	99.7	101.7	101.3	101.3	102.4	102.1	108.9	100.0	100.0	100.0	January 2007
የካቲት 1999	101.2	100.2	102.3	95.7	100.7	99.7	101.1	105.3	100.9	100.2	110.3	107.1	100.0	100.0	100.0	February "
መጋቢት 1999	106.6	108.2	105.0	104.5	100.7	101.7	107.1	104.9	103.8	103.1	110.4	104.1	100.0	100.0	100.0	March "
ግንቦት 1999	107.1	109.4	104.7	104.4	98.9	99.3	108.6	103.2	101.5	103.3	111.1	104.7	100.0	100.0	100.0	April "
ግንቦት 1999	108.2	110.8	105.6	104.7	100.7	100.7	108.7	104.7	103.8	103.1	112.5	107.8	100.0	100.0	100.0	May "
ሰኔ 1999	108.9	111.6	106.1	105.3	100.9	103.0	108.7	105.8	102.4	103.3	111.2	106.6	100.0	100.0	100.0	June "
2000																2007/2008
ሐምሌ 1999	110.9	113.6	108.1	105.2	100.7	102.0	115.1	107.0	102.4	103.1	111.7	106.4	100.0	100.0	100.0	July "
ክሌሌ 1999	114.2	120.1	108.1	106.5	100.7	101.7	115.1	107.0	102.4	103.1	111.7	108.7	100.0	100.0	100.0	August "
መስከረም 2000	116.7	123.5	109.8	105.7	100.7	103.1	117.8	111.8	102.2	103.1	110.7	105.3	100.0	100.0	100.0	September "
ጥቅምት 2000	116.6	121.5	111.6	105.8	100.7	105.1	117.6	118.8	112.9	103.1	109.7	106.3	101.0	101.0	101.0	October "
ጥር 2000	116.8	121.2	112.4	109.6	100.7	105.5	117.2	121.0	114.3	103.3	114.6	105.6	101.0	101.0	101.0	November "
ታህሳስ 2000	119.0	123.3	114.5	111.7	100.7	109.8	118.3	123.6	119.8	103.1	116.4	106.5	105.2	105.2	105.2	December "
ጥር 2000	122.2	128.9	115.2	110.5	100.7	109.6	117.2	129.4	121.0	103.2	117.9	107.7	106.3	106.3	106.3	January 2008
የካቲት 2000	126.0	134.4	117.2	120.9	100.7	111.8	117.5	130.3	122.8	109.9	120.4	109.7	104.2	104.2	104.2	February "
መጋቢት 2000	131.1	142.8	119.0	118.2	100.7	110.8	122.8	132.3	123.2	109.9	120.2	109.9	106.3	106.3	106.3	March "
ግንቦት 2000	133.5	145.4	121.4	118.6	100.7	113.7	126.6	136.2	120.8	109.9	121.0	110.6	103.1	103.1	103.1	April "
ግንቦት 2000	142.0	159.5	124.1	121.4	103.6	121.2	128.8	136.7	123.7	109.1	123.3	111.0	103.1	103.1	103.1	May "

Revised from January 2007 - November 2007

ወንጠረዥ 8ሀ፡- ጠቅላላ የ ሽግግር ዋጋ መመዘኛ ኢንዱክስ በሥሩ የተከተቱ ክፍሎች ለጋምቤላ ሕዝቦች ክልላዊ መንግሥት ጋምቤላ 1999 = 100

Table 8a: General Consumer Price Index and Its Components for the Gambela Peoples Regional State December 2006 = 100

ወርና ዓመት	ጠቅላላ ኢንዱክስ General Index	ጠቅላላ የግዥ ኢንዱክስ Food Total	ጠቅላላ የግዥ ከ ኢንዱክስ Non-Food Total	Non-food Consumer Price Index Components											Month and Year
				የግዥ ከ ያልሆኑ የኢንዱክስ ክፍሎች Beverages	ቢጃና ትምባሆ Cigarettes and Tobacco	ላብና መጫሚያ Clothing and Footwear	የቤት ቤራይ የቤት መሥሪያ ስቃዎች+ውሃ ንጹህናሃይል House Rent, Construction Materials, Water, and Fuel and Power	የቤት ስቃዎች የቤት ግዝጊታዎች የቤት ቁሳቁሳዎች የቤት ሠራተኛ ደመወዝ Furniture, Furnishings, Household Equipment and Operation	ሕክምና Medical Care and Health	ትራንስፖርትና መገናኛ Transport and Communication	መዝናኛና ትምህርት Recreation, Entertainment and Education	የግል ጽግራ ስቃዎች Personal Care and Effects	ሌሎች ስቃዎች Miscellaneous Goods		
ጋምቤላ 1999	100.0	100.0	100.0	100.0	100.0	100.0	100.0	100.0	100.0	100.0	100.0	100.0	100.0	0.0	December 2006
ጥር 1999	100.8	100.3	101.3	100.9	99.1	100.4	101.5	104.8	101.9	100.0	103.6	100.0	0.0	January 2007	
ፍቅሩት 1999	102.0	102.6	101.3	103.7	99.6	101.0	100.4	104.7	99.0	100.0	97.9	102.9	0.0	February "	
መጋቢት 1999	105.6	106.6	104.5	125.7	98.6	98.4	101.0	105.2	102.6	100.0	97.9	101.9	0.0	March "	
ሚያዝያ 1999	107.8	111.4	103.3	115.8	99.6	100.2	101.1	104.8	100.1	100.0	97.9	102.9	0.0	April "	
ግንቦት 1999	105.9	107.3	104.2	115.3	108.9	99.8	101.2	105.6	102.2	100.0	100.0	101.1	0.0	May "	
ሰኔ 1999	106.4	108.2	104.3	115.6	108.9	100.2	100.0	108.3	113.7	100.0	102.3	100.4	0.0	June "	
2000															2007/2008
ሐምሌ 1999	109.2	112.3	105.4	116.0	108.8	99.6	103.2	107.7	114.0	100.0	102.3	100.4	0.0	July "	
ኔሐሴ 1999	113.9	120.9	105.2	115.2	108.8	100.1	102.9	105.8	113.7	100.0	104.8	102.9	0.0	August "	
መስከረም 2000	116.4	125.3	105.4	115.0	108.8	98.9	102.8	108.5	113.9	100.0	108.8	104.8	0.0	September "	
ጥቅምት 2000	116.4	124.8	106.1	115.0	106.1	102.9	103.2	110.2	116.3	100.0	107.2	104.3	0.0	October "	
ንሐር 2000	117.2	126.5	105.6	115.0	103.2	102.8	103.2	108.8	113.4	100.0	106.0	104.3	0.0	November "	
ጋምቤላ 2000	118.2	126.6	107.8	117.7	101.3	108.0	104.5	115.4	113.7	100.0	104.9	103.0	0.0	December "	
ጥር 2000	120.0	128.8	109.0	125.4	98.5	108.5	104.7	117.1	112.6	100.0	105.0	103.5	0.0	January 2008	
ፍቅሩት 2000	124.3	133.5	112.9	125.8	107.5	112.9	106.2	127.3	116.4	114.1	111.7	102.9	0.0	February "	
መጋቢት 2000	125.9	134.4	115.3	126.0	115.1	114.2	108.0	134.5	119.5	114.1	112.3	103.3	0.0	March "	
ሚያዝያ 2000	123.6	131.4	113.8	125.4	109.8	112.5	108.1	128.9	119.6	114.1	110.0	102.6	0.0	April "	
ግንቦት 2000	135.7	147.7	120.8	126.7	110.2	116.9	117.6	152.9	120.9	114.1	111.8	103.6	0.0	May "	

Revised from January 2007 - November 2007

ወንጠረዥ 9ሀ፡- ጠቅላላ የ ሽንት ጥጋ መመዘኛ ኢንዱስትሪ ቢሮ የተካተቱ ክፍሎች ለሐረር ክልል ክልላዊ መንግሥት
 ታህሳስ 1999 = 100

Table 9a: General Consumer Price Index and Its Components for the Harari People Regional State
 December 2006 = 100

ወርና ዓመት	ጠቅላላ ኢንዱስትሪ General Index	ጠቅላላ ምግብ ኢንዱስትሪ Food Total	ጠቅላላ ምግብ ነክ ያልሆኑ ኢንዱስትሪ Non-Food Total	ምግብ ነክ ያልሆኑ የኢንዱስትሪ ክፍሎች Non-food Consumer Price Index Components											Month and Year	
				መጠጥ Beverages	ቢጃና ትምባህ Cigarettes and Tobacco	ላብና መጫሊያ Clothing and Footwear	የቤት ቢራይ የቤት መሥሪያ ዕቃዎች+ውሃ ንጸጅናሃይል House Rent, Construction Materials, Water, and Fuel and Power	የቤት ዕቃዎች የቤት ግዝጊያዎች የቤት ቁሳቁሳዎች የቤት ሠራተኛ ደመወዝ Furniture, Furnishings, Household Equipment and Operation	ሕክምና Medical Care and Health	ትራንስፖርትና መገናኛ Transport and Communication	መዝናኛና ትምህርት Recreation, Entertainment and Education	የግል ጽዕን ዕቃዎች Personal Care and Effects	ሌሎች ዕቃዎች Miscellaneous Goods			
ታህሳስ 1999	100.0	100.0	100.0	100.0	100.0	100.0	100.0	100.0	100.0	100.0	100.0	100.0	100.0	100.0	100.0	December 2006
ጥር 1999	101.4	102.5	100.4	104.1	100.0	100.2	100.6	98.8	100.9	100.0	100.2	102.1	100.0	100.0	100.0	January 2007
የካቲት 1999	98.9	100.9	97.0	102.0	103.4	91.8	96.3	97.5	100.9	100.0	100.3	100.5	100.0	100.0	100.0	February "
መጋቢት 1999	101.1	104.8	97.6	107.1	101.1	92.5	97.8	97.7	103.4	100.0	97.1	101.8	98.3	98.3	98.3	March "
ሚያዝያ 1999	99.9	102.5	97.4	102.5	101.1	92.1	96.5	99.6	99.8	100.0	100.2	104.5	98.9	98.9	98.9	April "
ግንቦት 1999	101.0	103.4	98.7	102.5	101.1	96.2	98.7	96.2	99.8	100.0	101.3	105.6	98.9	98.9	98.9	May "
ሰኔ 1999	101.5	103.9	99.3	105.2	103.4	95.8	98.9	98.1	99.8	100.0	102.1	106.6	99.4	99.4	99.4	June "
2000																2007/2008
ሐምሌ 1999	103.9	107.9	100.1	102.5	104.5	95.4	101.5	99.1	99.8	100.0	101.2	109.0	99.4	99.4	99.4	July "
ኔሐሴ 1999	107.7	114.9	101.0	107.2	104.5	97.6	101.6	100.7	100.7	100.0	100.5	109.7	99.4	99.4	99.4	August "
መስከረም 2000	108.9	115.6	102.7	107.6	104.5	102.6	101.6	104.0	101.6	100.0	101.3	111.6	100.0	100.0	100.0	September "
ጥቅምት 2000	110.1	116.5	104.2	107.6	104.5	107.6	101.6	105.2	101.0	100.0	104.1	114.4	100.0	100.0	100.0	October "
ኅዳር 2000	109.1	114.8	103.8	107.6	104.5	107.3	101.6	105.1	102.8	100.0	100.4	114.2	100.0	100.0	100.0	November "
ታህሳስ 2000	109.3	116.2	102.7	108.6	104.5	108.3	97.7	104.6	102.4	100.0	100.6	113.4	100.0	100.0	100.0	December "
ጥር 2000	111.8	119.5	104.6	105.5	104.5	110.8	102.4	104.2	102.8	100.0	100.9	115.8	96.7	96.7	96.7	January 2008
የካቲት 2000	116.8	124.4	109.7	105.5	104.5	115.3	106.7	111.8	103.1	121.2	101.2	118.6	96.7	96.7	96.7	February "
መጋቢት 2000	123.9	134.9	113.6	107.5	104.5	118.9	115.1	113.8	94.2	121.2	100.3	121.4	98.5	98.5	98.5	March "
ሚያዝያ 2000	127.6	140.2	115.8	109.5	106.8	120.5	120.0	115.7	94.4	121.2	98.4	122.8	99.4	99.4	99.4	April "
ግንቦት 2000	139.0	157.1	122.0	112.8	111.1	130.1	128.3	121.6	96.3	121.2	98.6	125.7	104.9	104.9	104.9	May "

Revised from January 2007 - November 2007

ሠንጠረዥ 10ሀ:- ጠቅላላ የሽግግር ዋጋ መመዘኛ ኢንዱስትሪ ቢሥራ የተካተቱ ክፍሎች ለአርጋይ ክልል መገንጠያ
 ታህሳስ 1999 = 100

Table 10a: General Consumer Price Index and Its Components for the Oromiya Regional State
 December 2006 = 100

ወር ዓመት	ጠቅላላ ኢንዱስትሪ	ጠቅላላ ምግብ ኢንዱስትሪ	ጠቅላላ ምግብ ነፃ ኢንዱስትሪ	Non-food Consumer Price Index Components											Month and Year
				ምግብ ነፃ ኢንዱስትሪ	ቤሽራና ትምባህ	ልብና መጫጫ	የቤት ኪራይ የቤት መሥሪያ ዕቃዎች+ውሃ ነጻጅናሃይል	የቤት ሕክምና የቤት ጥበቃዎች የቤት ቁሳቁስ የቤት ሠራተኛ ደመወዝ	ሕክምና	ትራንስፖርትና መገናኛ	መዝናኛና ትምህርት	የግል ገደብና ግል ጽግ ዕቃዎች	ሌሎች ሕጻናት		
	General Index	Food Total	Non-Food Total	Beverages	Cigarettes and Tobacco	Clothing and Footwear	House Rent, Construction Materials, Water, and Fuel and Power	Furniture, Furnishings, Household Equipment and Operation	Medical Care and Health	Transport and Communication	Recreation, Entertainment and Education	Personal Care and Effects	Miscellaneous Goods		
ታህሳስ 1999	100.0	100.0	100.0	100.0	100.0	100.0	100.0	100.0	100.0	100.0	100.0	100.0	100.0	100.0	December 2006
ጥር 1999	100.8	100.6	101.1	101.1	102.2	101.8	100.8	101.9	99.3	100.1	100.4	100.8	100.0	100.0	January 2007
የካቲት 1999	102.3	102.4	102.1	103.1	102.9	103.6	101.9	102.3	100.6	98.5	100.5	100.7	100.0	100.0	February "
መጋቢት 1999	104.7	105.4	103.5	102.9	102.8	106.9	103.1	104.7	106.3	98.9	99.9	100.7	100.0	100.0	March "
ሚያዝያ 1999	106.7	108.3	104.5	109.9	101.8	108.1	102.6	106.5	106.5	99.6	99.4	101.0	100.0	100.0	April "
ግንቦት 1999	106.5	107.5	105.2	105.1	102.1	107.5	105.0	108.2	106.7	99.3	99.4	103.2	100.0	100.0	May "
ሰኔ 1999	107.5	109.2	105.0	104.4	101.7	107.0	105.0	108.3	105.0	99.6	99.7	103.3	100.0	100.0	June "
2000															2007/2008
ሐምሌ 1999	109.7	112.4	105.9	105.0	102.0	109.0	105.5	110.2	100.9	99.8	99.2	105.4	100.0	100.0	July "
ኔሐሴ 1999	112.1	116.4	105.9	104.9	103.0	108.9	105.3	110.5	102.6	99.6	100.6	105.4	100.0	100.0	August "
መስከረም 2000	114.3	119.2	107.4	104.7	101.9	112.3	105.4	114.3	103.0	99.8	104.5	107.4	101.3	101.3	September "
ጥቅምት 2000	116.6	122.9	107.4	105.4	100.9	114.0	104.6	113.3	102.6	100.6	106.1	106.7	101.6	101.6	October "
ግዳር 2000	117.4	123.1	109.3	108.0	101.3	116.2	106.6	115.7	106.8	102.5	105.5	106.4	101.4	101.4	November "
ታህሳስ 2000	119.2	125.9	109.5	109.9	100.7	116.0	106.5	118.1	105.5	100.0	105.4	107.1	98.0	98.0	December "
ጥር 2000	121.2	128.3	110.9	109.6	102.8	118.2	107.0	122.6	108.4	99.0	108.1	109.3	99.9	99.9	January 2008
የካቲት 2000	128.4	136.2	117.1	113.0	112.5	121.6	115.9	129.0	111.6	107.6	108.2	112.9	101.5	101.5	February "
መጋቢት 2000	139.4	151.5	121.9	123.0	122.1	123.0	121.8	133.9	113.1	107.3	111.5	118.9	105.9	105.9	March "
ሚያዝያ 2000	141.9	154.4	123.8	126.4	114.2	123.3	124.5	137.0	114.8	107.8	111.8	121.1	106.3	106.3	April "
ግንቦት 2000	154.6	173.3	127.6	132.9	116.7	130.8	126.6	140.1	116.9	107.8	110.2	128.7	111.7	111.7	May "

Revised from January 2007 - November 2007

ሠንጠረዥ 11ሀ፡- ጠቅላላ የ ሽንጻዎች ዋጋ መመዘኛ ኢንዱክስ በሥራ የተተካ ክፍሎች ለደብዳቤ ክልል መገንጠያ
 ታህሳስ 1999 = 100

Table 11a: General Consumer Price Index and Its Components for the SNNP Regional State
 December 2006= 100

ወርና ዓመት	ጠቅላላ ኢንዱክስ General Index	ጠቅላላ የምግብ ኢንዱክስ Food Total	ጠቅላላ የምግብ ከፍተኛ ኢንዱክስ Non-Food Total	Non-food Consumer Price Index Components											Month and Year	
				የምግብ ከፍተኛ Beverages	ቢዳራና ትምባህ Cigarettes and Tobacco	ልብና መጫጫ Clothing and Footwear	የቤት ኪራይ የቤት መሥሪያ ስቃዎች+ውሃ ነጻጅናሃይል House Rent, Construction Materials, Water, and Fuel and Power	የቤት ስቃዎች የቤት ግንቢያዎች የቤት ቁሳቁስ የቤት ሠራተኛ ደመወዝ Furniture, Furnishings, Household Equipment and Operation	ሕክምና Medical Care and Health	ትራንስፖርትና መገናኛ Transport and Communication	መዝናኛና ትምህርት Recreation, Entertainment and Education	የግል ገደብና ጥገና ስቃዎች Personal Care and Effects	ሌሎች ስቃዎች Miscellaneous Goods			
ታህሳስ 1999	100.0	100.0	100.0	100.0	100.0	100.0	100.0	100.0	100.0	100.0	100.0	100.0	100.0	100.0	100.0	December 2006
ጥር 1999	100.4	100.2	100.8	97.4	95.6	101.3	100.3	105.5	100.3	100.0	99.9	96.5	102.3	100.0	100.0	January 2007
የኮቲት 1999	100.7	99.4	102.4	101.1	96.5	102.4	98.9	116.6	101.0	112.6	102.0	98.7	100.0	100.0	100.0	February "
መጋቢት 1999	101.5	100.0	103.5	106.0	95.4	103.2	100.0	115.1	105.5	112.8	102.5	97.4	101.1	100.0	100.0	March "
ግብርን 1999	103.1	102.2	104.2	107.1	96.5	105.0	100.3	115.2	106.5	112.8	104.5	96.6	101.1	100.0	100.0	April "
ግንቦት 1999	103.8	102.7	105.4	109.7	95.4	104.9	102.1	117.2	104.3	113.1	102.2	99.9	101.1	100.0	100.0	May "
ሰኔ 1999	105.5	105.0	106.2	114.6	94.9	104.9	102.4	118.1	105.1	112.5	102.9	100.0	101.1	100.0	100.0	June "
2000																2007/2008
ሐምሌ 1999	107.2	108.3	105.6	108.9	95.4	106.5	101.1	120.1	106.6	113.2	102.8	101.2	101.1	100.0	100.0	July "
ኔሐሴ 1999	108.9	110.1	107.3	109.5	96.1	108.0	103.6	119.5	109.9	113.3	106.4	100.9	103.4	100.0	100.0	August "
መስከረም 2000	110.9	112.8	108.2	110.7	95.6	111.2	103.2	120.9	110.7	115.1	106.6	102.5	105.7	100.0	100.0	September "
ጥቅምት 2000	113.4	114.6	111.7	111.8	95.4	111.2	110.0	126.5	109.7	112.1	107.3	103.3	105.7	100.0	100.0	October "
ገብር 2000	113.6	114.2	112.7	112.4	95.8	113.1	110.9	129.9	101.2	113.0	106.9	101.4	106.9	100.0	100.0	November "
ታህሳስ 2000	115.3	117.0	113.0	114.5	94.4	116.2	110.5	126.5	106.3	113.3	101.9	103.6	106.9	100.0	100.0	December "
ጥር 2000	117.6	119.9	114.4	115.7	96.3	116.5	112.7	126.1	106.3	113.5	105.3	106.7	106.9	100.0	100.0	January 2008
የኮቲት 2000	122.6	125.8	118.2	119.7	111.8	118.7	114.4	139.0	107.7	140.6	107.4	107.9	106.9	100.0	100.0	February "
መጋቢት 2000	135.9	142.8	126.4	122.6	119.7	121.0	129.9	143.9	110.0	140.9	109.5	109.9	106.9	100.0	100.0	March "
ግብርን 2000	139.1	148.0	127.0	123.0	116.0	122.8	129.3	148.0	111.0	141.7	109.2	113.6	106.9	100.0	100.0	April "
ግንቦት 2000	148.1	160.5	131.1	128.4	115.5	127.4	134.5	150.9	114.8	142.1	109.5	113.2	106.9	100.0	100.0	May "

Revised from January 2007 - November 2007, and Medical Care Revised up to February 2008

ወንጠራዊ 12ሁ-ጠቅላላ የ ሽግግሮች ዋጋ መመዘኛ ሊንዲክስና ቢሮዮ የተካተቱ ክፍሎች ለሰግሌ ክልላዊ መንግስት
 ታህሳስ 1999 = 100

Table 12a: General Consumer Price Index and Its Components for the Somali Regional State
 December 2006 = 100

ወርና ዓመት	ጠቅላላ ሊንዲክስ General Index	ጠቅላላ የግብ ሊንዲክስ Food Total	ጠቅላላ የግብ ነክ የልሆኑ ሊንዲክስ Non-Food Total	Non-food Consumer Price Index Components											Month and Year	
				የግብ ነክ የልሆኑ የሊንዲክስ ክፍሎች Beverages	ቢጃራና ትምባሆ Cigarettes and Tobacco	ልብና መጫጫያ Clothing and Footwear	የቤት ቢራይና የቤት መሥሪያ ስቃዎች+ውሃ ንጹህናሃይል House Rent, Construction Materials, Water, and Fuel and Power	የቤት ስቃዎች የቤት ግንባራዎች የቤት ቁሳቁሶች የቤት ሠራተኛ ደመወዝ Furniture, Furnishings, Household Equipment and Operation	ሕክምና Medical Care and Health	ትራንስፖርትና መገናኛ Transport and Communication	መዝናኛና ትምህርት Recreation, Entertainment and Education	የግል ጽግራ ስቃዎች Personal Care and Effects	ሌሎች ስቃዎች Miscellaneous Goods			
ታህሳስ 1999	100.0	100.0	100.0	100.0	100.0	100.0	100.0	100.0	100.0	100.0	100.0	100.0	100.0	100.0	100.0	December 2006
ጥር 1999	101.0	101.6	100.2	103.9	100.0	101.1	101.3	95.2	101.1	99.4	97.7	98.9	100.0			January 2007
የካቲት 1999	101.7	101.8	101.4	102.6	102.6	103.4	102.1	98.6	98.8	99.1	97.5	97.5	95.8			February "
መጋቢት 1999	101.9	103.0	100.1	102.2	102.6	99.0	101.8	98.3	103.7	96.9	96.8	94.7	91.7			March "
ሚያዝያ 1999	101.2	102.0	99.9	105.4	100.2	101.1	99.4	99.5	104.3	97.6	99.0	96.2	95.8			April "
ግንቦት 1999	101.5	101.9	100.8	105.4	102.6	101.5	100.7	100.2	102.4	99.8	98.4	96.9	95.8			May "
ሰኔ 1999	102.6	102.3	102.9	105.4	102.6	104.4	103.0	99.4	125.7	99.6	99.5	98.2	95.8			June "
2000																2007/2008
ሐምሌ 1999	103.9	105.0	102.2	104.0	102.6	103.4	102.2	99.4	122.7	99.5	96.5	97.8	95.8			July "
ኔሐሴ 1999	107.3	109.3	104.0	104.1	109.0	104.1	104.2	100.8	125.6	99.5	97.8	98.0	95.8			August "
መስከረም 2000	107.4	110.7	101.9	102.2	109.0	101.7	100.2	98.0	129.7	101.6	99.0	100.2	100.0			September "
ጥቅምት 2000	110.1	113.0	105.4	105.0	112.3	103.0	106.5	102.5	134.4	96.0	96.3	97.7	102.1			October "
ንሐር 2000	109.6	112.2	105.3	105.8	112.3	110.4	102.1	100.6	132.7	101.6	98.3	99.1	99.8			November "
ታህሳስ 2000	109.4	111.5	106.1	108.8	109.0	109.6	104.8	100.7	133.9	99.8	100.4	100.8	102.2			December "
ጥር 2000	111.9	115.1	106.8	107.5	109.0	110.7	106.3	99.3	134.4	101.3	100.1	99.5	102.5			January 2008
የካቲት 2000	121.7	128.5	110.7	106.8	110.5	111.6	111.8	108.2	133.0	106.2	103.6	102.1	102.3			February "
መጋቢት 2000	125.4	133.2	112.6	105.9	112.3	116.1	112.4	110.3	135.6	108.1	107.7	103.6	102.3			March "
ሚያዝያ 2000	127.4	136.3	112.8	105.2	109.0	117.1	112.0	113.9	137.8	109.2	105.0	104.6	100.7			April "
ግንቦት 2000	136.5	149.3	115.6	106.2	109.0	124.4	111.9	124.4	134.9	108.3	103.0	106.7	102.7			May "

Revised from January 2007 - November 2007

ሠንጠረዥ 13ሀ- ጠቅላላ የ ሽግግር ዋጋ መመዘኛ ኢንዱክስ በሥሩ የተከተሉ ክፍሎች ለትግራይ ክልል መገንጠት
 ታህሳስ 1999 = 100

Table 13a: General Consumer Price Index and Its Components for the Tigray Regional State
 December 2006 = 100

ወርና ዓመት	ጠቅላላ ኢንዱክስ General Index	ጠቅላላ ምግብ ኢንዱክስ Food Total	ጠቅላላ ምግብ ካልሆኑ ኢንዱክስ Non-Food Total	ምግብ ካልሆኑ የኢንዱክስ ክፍሎች Non-food Consumer Price Index Components											ወር Month and Year	
				መጠጥ Beverages	ቢሾራና ትምባሆ Cigarettes and Tobacco	ላብና መጫሚያ Clothing and Footwear	የቤት ቢራይና የቤት መሥሪያ ስቃዎች+ውሃ ንጹህናሃይል House Rent, Construction Materials, Water, and Fuel and Power	የቤት ስቃዎች የቤት ግዝጊያዎች የቤት ቁሳቁሶች የቤት ሠራተኛ ደመወዝ Furniture, Furnishings, Household Equipment and Operation	ሕክምና Medical Care and Health	ትራንስፖርትና መገናኛ Transport and Communication	መዝናኛና ትምህርት Recreation, Entertainment and Education	የግል ጽግራ ስቃዎች Personal Care and Effects	ሌሎች ስቃዎች Miscellaneous Goods			
ታህሳስ 1999	100.0	100.0	100.0	100.0	100.0	100.0	100.0	100.0	100.0	100.0	100.0	100.0	100.0	100.0	100.0	December 2006
ጥር 1999	100.8	101.5	99.9	99.9	100.0	98.2	98.7	101.6	108.3	100.0	104.5	102.5	104.5	104.5	104.5	January 2007
የካቲት 1999	101.3	101.9	100.6	98.5	101.1	104.6	97.4	101.6	106.6	96.7	100.0	104.6	104.5	104.5	104.5	February "
መጋቢት 1999	103.9	105.5	101.6	99.3	97.5	106.7	98.9	102.3	105.8	94.5	103.8	102.3	104.5	104.5	104.5	March "
ሚያዝያ 1999	105.1	107.0	102.4	99.8	100.0	109.3	98.8	103.1	106.2	95.9	99.9	101.3	108.5	108.5	108.5	April "
ግንቦት 1999	106.7	109.6	102.7	100.4	100.0	106.0	100.7	104.1	106.7	94.2	101.9	102.6	109.7	109.7	109.7	May "
ሰኔ 1999	108.8	111.1	105.5	100.1	100.5	111.8	104.2	104.0	106.3	95.7	100.2	101.2	112.4	112.4	112.4	June "
2000																2007/2008
ሐምሌ 1999	110.3	114.7	104.3	98.3	103.6	113.0	99.2	107.8	106.2	95.7	99.6	104.6	112.4	112.4	112.4	July "
ኔሐሴ 1999	115.5	122.7	105.5	100.1	101.6	113.7	101.7	106.8	107.4	95.6	101.0	104.9	112.4	112.4	112.4	August "
መስከረም 2000	121.4	131.5	107.5	103.5	101.6	117.8	102.2	110.9	108.9	95.5	106.3	107.1	113.1	113.1	113.1	September "
ጥቅምት 2000	125.7	134.0	114.2	101.9	96.5	118.7	117.8	113.7	103.9	93.6	103.9	108.0	115.9	115.9	115.9	October "
ንሐር 2000	120.1	129.8	106.7	99.3	96.8	117.1	102.2	114.7	103.8	93.1	105.1	94.6	113.9	113.9	113.9	November "
ታህሳስ 2000	120.7	130.8	106.7	97.1	96.9	114.0	103.6	116.0	103.0	93.1	106.1	97.5	112.7	112.7	112.7	December "
ጥር 2000	122.6	132.3	109.2	106.0	94.8	117.1	106.2	116.3	102.2	93.7	104.0	102.1	115.4	115.4	115.4	January 2008
የካቲት 2000	127.7	139.5	111.5	113.0	100.3	116.3	107.0	122.3	104.3	105.9	105.3	108.5	116.6	116.6	116.6	February "
መጋቢት 2000	137.7	155.2	113.8	117.6	108.8	120.1	109.0	126.4	101.7	105.9	105.8	109.9	116.6	116.6	116.6	March "
ሚያዝያ 2000	139.7	156.5	116.6	121.5	106.5	128.2	108.7	129.6	104.6	105.6	107.6	114.2	118.1	118.1	118.1	April "
ግንቦት 2000	146.6	166.7	119.0	125.5	106.8	128.2	112.7	135.7	104.0	105.8	105.7	115.4	118.8	118.8	118.8	May "

Revised from January 2007 - November 2007

ሠንጠረዥ 1A:- ጠቅላላ የምግብ ወጪዎች የሽግግር ዋጋ መመዘኛ ሊገደዘን በላይ ለተኖሩ ደረጃ
 ታህሳስ 1999 = 100

Table 1b: Consumer Price Index of Total Food and Its Components at Country Level
 December 2006 = 100

ወር ዓመት	ጠቅላላ ምግብ	እህል	በቤት ውስጥ የተወሰዱ የምግብ ዓይነቶች			FOOD TAKEN AT HOME							ከቤት ውጭ የተወሰዱ ምግቦች	Month and Year	
			ጥራጥረ	ላቦና ሌሎች የተዘጋጁ ምግቦች	ሥጋ	ወተት+ ዓይብና እንቅላል	ዘይትና ቅባቶች	አትክልትና ፍራፍራ	ቅመግ ቅመጥ	ድንችና ሌሎች ሥራሥሮች	ታላቅታ ቡናና ሻይ ቅጠል	ሌሎች ምግቦች			የግብረጫ አገልግሎት
	Food Total	Cereals	Pulses	Bread and other Prepared Food	Meat	Milk,Cheese and Egg	Oils and Fats	Vegetables and Fruits	Spices	Potatoes, Other Tubers and Stems	Coffee (beans, whole) and Tea Leaves	Other Food Items	Milling Charges	Food taken away from home	
ታህሳስ 1999	100.0	100.0	100.0	100.0	100.0	100.0	100.0	100.0	100.0	100.0	100.0	100.0	100.0	100.0	December 2006
ጥር 1999	100.0	98.2	100.3	103.1	100.8	100.2	103.0	101.3	106.1	100.3	99.9	100.2	102.6	100.3	January 2007
የካቲት 1999	102.9	100.6	106.5	104.6	102.1	100.5	105.0	105.5	129.0	101.9	100.1	97.6	103.8	102.5	February "
መጋቢት 1999	105.4	100.4	107.9	107.8	101.7	100.8	109.8	111.2	175.2	102.3	103.4	97.4	110.7	101.6	March "
ሚያዝያ 1999	107.7	100.8	109.3	112.1	110.1	104.5	117.1	114.2	188.0	103.4	102.9	99.5	111.8	105.0	April "
ግንቦት 1999	107.9	101.5	109.7	113.1	106.4	104.7	119.5	107.7	209.2	99.9	102.7	97.9	110.2	103.8	May "
ሰኔ 1999	109.5	102.4	109.7	107.2	108.4	104.3	121.0	110.0	223.6	101.5	104.7	98.8	111.2	107.8	June "
2000															2007/2008
ሐምሌ 1999	113.0	105.2	112.9	116.0	109.3	105.6	124.3	110.9	241.3	102.8	110.5	99.3	109.6	111.7	July "
ኔሐሴ 1999	118.1	108.2	114.4	117.8	110.9	106.3	128.4	115.3	327.3	103.5	113.0	98.6	110.1	112.3	August "
መስከረም 2000	121.9	112.9	114.8	122.1	113.6	105.1	131.4	117.3	361.3	104.9	115.4	95.1	110.4	113.9	September "
ጥቅምት 2000	124.4	116.5	115.7	123.0	111.6	108.5	139.6	124.2	372.3	104.5	117.2	95.3	109.8	111.3	October "
ኅዳር 2000	123.8	117.5	116.0	126.9	114.8	108.3	143.0	132.3	295.6	107.9	123.7	95.1	109.8	112.5	November "
ታህሳስ 2000	125.7	119.9	116.0	126.3	115.1	110.7	145.0	138.3	294.3	114.1	121.8	95.4	110.8	114.7	December "
ጥር 2000	127.9	121.2	117.2	127.4	117.7	112.1	149.0	146.6	295.2	122.1	123.1	97.4	111.8	115.8	January 2008
የካቲት 2000	133.9	126.1	120.7	140.5	120.7	121.1	160.3	151.4	313.5	132.3	126.9	106.3	115.3	118.9	February "
መጋቢት 2000	146.9	146.9	129.6	147.2	124.6	126.6	168.3	173.3	327.7	141.8	131.1	116.4	117.2	122.9	March "
ሚያዝያ 2000	149.8	151.3	131.6	148.8	126.1	129.3	172.3	172.3	333.0	145.0	132.4	111.8	118.3	125.1	April "
ግንቦት 2000	166.3	182.5	139.7	160.8	133.6	135.6	184.8	173.1	353.5	151.4	136.5	118.5	121.7	128.3	May "

Revised from January 2007 - November 2007

ወንጠራዊ 2A:- የፖለቲካ ዋጋ መጠነኛ ሊንዲስ ግጠታዎች በአገር አቀፍ እና በክልሎች ደረጃ
 ታህሳስ 1999 = 100

Table 2b: Summary of Consumer Price Indices of Food at Country and Regional Levels
 December 2006=100

ወርና ዓመት	Reporting Level												Month and Year	
	Eth.	A.A.	Afar	Amhara	B.Gumuz	D.Dawa	Gambela	Harari	Oromia	SNNP	Somalia	Tigray		
ታህሳስ 1999	100.0	100.0	100.0	100.0	100.0	100.0	100.0	100.0	100.0	100.0	100.0	100.0	100.0	December 2006
ጥር 1999	100.0	100.5	101.4	97.9	99.1	99.2	100.3	102.5	100.6	100.2	101.6	101.5	101.5	January 2007
የካቲት 1999	102.9	102.4	102.0	106.2	100.0	100.2	102.6	100.9	102.4	99.4	101.8	101.9	101.9	February "
መጋቢት 1999	105.4	107.9	110.2	108.5	104.3	108.2	106.6	104.8	105.4	100.0	103.0	103.0	105.5	March "
ሚያዝያ 1999	107.7	110.2	113.4	110.2	105.3	109.4	111.4	102.5	108.3	102.2	102.0	107.0	107.0	April "
ግንቦት 1999	107.9	113.2	109.9	111.6	107.8	110.8	107.3	103.4	107.5	102.7	101.9	109.6	109.6	May "
ሰኔ 1999	109.5	111.9	114.7	112.7	108.8	111.6	108.2	103.9	109.2	105.0	102.3	111.1	111.1	June "
2000														2007/2008
ሐምሌ 1999	113.0	116.3	118.7	116.1	114.9	113.6	112.3	107.9	112.4	108.3	105.0	114.7	114.7	July "
ኔሐሴ 1999	118.1	120.9	125.5	124.8	123.2	120.1	120.9	114.9	116.4	110.1	109.3	122.7	122.7	August "
መነሻ 2000	121.9	126.0	128.5	130.1	133.4	123.5	125.3	115.6	119.2	112.8	110.7	131.5	131.5	September "
ጥቅምት 2000	124.4	124.6	129.1	132.3	134.6	121.5	124.8	116.5	122.9	114.6	113.0	134.0	134.0	October "
ገብር 2000	123.8	118.1	126.5	131.4	135.7	121.2	126.5	114.8	123.1	114.2	112.2	129.8	129.8	November "
ታህሳስ 2000	125.7	123.2	127.8	130.8	139.1	123.3	126.6	116.2	125.9	117.0	111.5	130.8	130.8	December "
ጥር 2000	127.9	124.3	128.7	132.2	146.6	128.9	128.8	119.5	128.3	119.9	115.1	132.3	132.3	January 2008
የካቲት 2000	133.9	131.1	131.1	134.9	154.8	134.4	133.5	124.4	136.2	125.8	128.5	139.5	139.5	February "
መጋቢት 2000	146.9	142.6	137.9	142.5	161.2	142.8	134.4	134.9	151.5	142.8	133.2	155.2	155.2	March "
ሚያዝያ 2000	149.8	143.2	139.4	145.0	160.0	145.4	131.4	140.2	154.4	148.0	136.3	156.5	156.5	April "
ግንቦት 2000	166.3	165.2	161.7	164.3	167.9	159.5	147.7	157.1	173.3	160.5	149.3	166.7	166.7	May "

Revised from January 2007 - November 2007

ወንጠራ 3 ለ፡- ጠቅላላ የሽንጥ ጥጋ መመዘኛ ሊገደዘነና በሥራ የተተተ ክፍሎች ለሌሊት ለበግ ከተገ መተዳደር
 ታህሳስ 1999 = 100

Table 3b: Consumer Price Index of Total Food and Its Components for Addis Ababa City Administration
 December 2006 = 100

ወርና ዓመት	ጠቅላላ ምግብ	እህል	በቤት ውስጥ የተወለዱ የምግብ ዓይነቶች			FOOD TAKEN AT HOME							ከቤት ውጭ የተወለዱ ምግቦች	Month and Year	
			ጥሬጥሬ	ዳቦና ሌሎች የተዘጋጁ ምግቦች	ሥጋ	ወተት+ ዓይብና እንቁላል	ዘይትና ቅባቶች	አትክልትና ፍሬፍሬ	ቅመግ ቅመጦች	ድንችና ሌሎች ሥራሥሮች	ያልተቀላቀሉ ቡናና ጃይ ቅጠል	ሌሎች ምግቦች			የግብረጫ አገልግሎት
	Food Total	Cereals	Pulses	Bread and other Prepared Food	Meat	Milk, Cheese and Egg	Oils and Fats	Vegetables and Fruits	Spices	Potatoes, Other Tubers and Stems	Coffee (beans, whole) and Tea Leaves	Other Food Items	Milling Charges	Food taken away from home	
ታህሳስ 1999	100.0	100.0	100.0	100.0	100.0	100.0	100.0	100.0	100.0	100.0	100.0	100.0	100.0	100.0	December 2006
ጥር 1999	100.5	99.8	105.0	102.0	101.8	103.3	97.5	105.2	102.1	108.4	109.0	99.5	100.3	100.6	January 2007
የኮቲት 1999	102.4	100.6	108.0	102.1	100.4	100.6	99.5	130.0	112.6	107.2	101.2	99.9	101.2	122.3	February "
ጠቅላይ 1999	107.9	101.3	110.6	106.6	104.0	105.7	104.7	133.6	193.2	113.1	105.9	108.1	102.9	105.3	March "
ጢያዝያ 1999	110.2	99.6	109.8	111.4	113.9	111.8	112.4	124.1	194.9	115.1	107.5	102.2	103.5	106.5	April "
ግንቦት 1999	113.2	101.4	117.9	112.9	109.8	121.4	114.1	114.6	215.4	114.3	107.4	104.0	103.5	108.6	May "
ሰኔ 1999	111.9	102.7	115.6	109.3	105.9	117.5	118.0	110.9	214.6	100.2	105.3	104.2	108.2	111.0	June "
2000															2007/2008
ሐምሌ 1999	116.3	103.6	118.2	110.3	109.8	120.5	119.6	130.7	272.9	98.7	109.6	103.5	110.3	110.3	July "
ኦገስት 1999	120.9	105.2	120.1	111.6	111.1	120.3	124.2	159.7	345.4	100.6	113.9	102.0	109.9	110.4	August "
መስከረም 2000	126.0	107.1	123.1	119.6	115.0	122.6	126.3	161.4	393.7	111.0	117.6	96.7	114.7	110.8	September "
ጥቅምት 2000	124.6	109.0	115.3	115.8	113.3	124.2	128.3	150.7	374.6	111.1	117.7	95.0	110.8	112.4	October "
ንሐሴ 2000	118.1	105.6	120.7	116.9	112.7	122.4	132.5	155.4	223.7	135.6	130.3	95.8	111.7	116.6	November "
ታህሳስ 2000	123.2	107.7	123.4	117.2	115.0	122.7	137.4	150.2	286.0	158.5	131.4	98.4	122.7	120.8	December "
ጥር 2000	124.3	107.8	121.2	122.4	113.2	124.7	139.0	153.0	291.0	188.6	131.6	101.2	122.6	114.4	January 2008
የኮቲት 2000	131.1	109.4	130.2	127.9	114.1	129.0	141.9	116.6	290.1	304.3	132.5	116.0	120.0	119.9	February "
ጠቅላይ 2000	142.6	129.7	143.7	143.1	122.3	131.0	161.8	107.3	307.9	303.0	137.2	116.1	118.6	122.3	March "
ጢያዝያ 2000	143.2	130.3	144.6	143.3	123.7	133.5	161.5	103.2	325.4	292.5	139.3	106.7	119.6	124.7	April "
ግንቦት 2000	165.2	150.8	163.9	197.6	133.8	143.6	187.5	101.6	353.8	343.9	140.5	115.5	136.4	143.1	May "

Revised from January 2007 - November 2007

ሠገጠራዎች ላለ፡- ጠቅላላ የምግብ ክፍሎች የ ሽግግር ዋጋ መመዘኛ ሊንደዘስ ለአፋር ክልል መገንጠያ
 ታህሳስ 1999 = 100

Table 4b: Consumer Price index of Total Food and Its Components for the Afar Regional State
 December 2006 = 100

ወርና ዓመት	ጠቅላላ የምግብ	እህል	በቤት ውስጥ የተወሰሱ የምግብ ዓይነቶች			FOOD TAKEN AT HOME							ከቤት ውጭ የተወሰዱ የምግቦች	Month and Year	
			ጥሬጥሬ	ዳቦና ሌሎች የተዘጋጁ የምግቦች	ሥጋ	ወተት፣ ዓይብና እንቁሳል	ዘይትና ቅባቶች	አትክልትና ፍሬፍሬ	ቅመግ ቅመጦ	ድንችና ሌሎች ሥራሥሮች	ያልተቀላቀሉ ቡናና ጃይ ቅጠል	ሌሎች የምግቦች			የግብረጫ አገልግሎት
	Food Total	Cereals	Pulses	Bread and other Prepared Food	Meat	Milk, Cheese and Egg	Oils and Fats	Vegetables and Fruits	Spices	Potatoes, Other Tubers and Stems	Coffee (beans, whole) and Tea Leaves	Other Food Items	Milling Charges	Food taken away from home	
ታህሳስ 1999	100.0	100.0	100.0	100.0	100.0	100.0	100.0	100.0	100.0	100.0	100.0	100.0	100.0	100.0	December 2006
ጥር 1999	101.4	99.8	108.3	101.1	100.3	100.1	99.9	110.1	101.8	101.8	99.8	98.8	102.4	105.8	January 2007
የኮቲት 1999	102.0	99.1	111.1	101.4	107.7	100.1	99.8	114.4	109.4	102.3	100.8	94.8	105.1	104.4	February "
መጋቢት 1999	110.2	102.0	118.5	103.1	112.6	107.6	124.6	120.5	160.8	103.7	118.9	93.1	104.5	108.0	March "
ሚያዝያ 1999	113.4	100.9	120.6	105.2	128.0	109.8	125.2	135.3	187.9	98.6	121.1	94.4	97.8	110.3	April "
ግንቦት 1999	109.9	100.6	123.1	102.6	127.0	109.8	129.7	113.6	163.8	109.6	97.3	95.7	100.4	107.7	May "
ሰኔ 1999	114.7	102.1	122.1	104.4	126.5	127.7	129.6	129.0	179.9	111.0	96.6	96.1	100.4	109.0	June "
2000															2007/2008
ሐምሌ 1999	118.7	106.2	127.9	103.4	127.9	127.7	129.6	137.0	235.3	113.2	98.2	97.3	100.0	110.7	July "
ኦገስት 1999	125.5	107.7	130.6	110.1	127.7	131.0	130.0	128.5	388.0	114.2	100.1	92.9	99.7	112.9	August "
መስከረም 2000	128.5	113.8	132.6	108.3	128.6	132.5	127.3	130.5	417.4	114.2	101.5	90.9	100.4	114.6	September "
ጥቅምት 2000	129.1	112.2	131.7	108.9	132.2	133.1	137.7	139.3	418.3	115.5	94.9	90.2	100.4	112.7	October "
ንሐር 2000	126.5	112.0	130.2	113.6	131.7	136.9	143.2	153.7	286.5	115.5	103.7	88.7	100.4	112.9	November "
ታህሳስ 2000	127.8	113.1	133.0	108.5	137.2	135.9	145.0	155.9	309.6	115.5	104.4	88.2	100.4	113.4	December "
ጥር 2000	128.7	114.5	134.8	106.1	141.1	132.6	146.8	162.9	314.7	137.0	105.8	87.5	100.4	116.2	January 2008
የኮቲት 2000	131.1	117.2	143.8	116.1	140.7	130.7	156.9	154.7	317.7	162.6	105.4	88.9	99.5	118.8	February "
መጋቢት 2000	137.9	126.2	157.8	131.1	142.4	133.0	166.6	155.5	322.9	192.7	106.9	99.8	103.0	123.1	March "
ሚያዝያ 2000	139.4	131.3	163.4	137.3	145.0	133.3	162.3	111.6	333.8	184.0	111.1	104.6	103.0	124.5	April "
ግንቦት 2000	161.7	155.8	169.2	175.1	163.2	175.2	182.0	120.1	359.7	228.3	116.1	102.9	106.5	136.6	May "

Revised from January 2007 - November 2007

ሠንጠረዥ 5ለ፡- ጠቅላላ የምግብና የምግብ ክፍሎች የ ሽግግር ዋጋ መመዘኛ ኢንዱስትሪ ለአገሪቱ ክልላዊ መንግሥት ታህሳስ 1999 = 100

Table 5b: Consumer Price Index of Total Food and Its Components for the Amhara Regional State December 2006 = 100

ወርና ዓመት	ጠቅላላ የምግብ	እህል	በቤት ውስጥ የተወሰዱ የምግብ ዓይነቶች			FOOD TAKEN AT HOME								ከቤት ውጪ የተወሰዱ የምግቦች	Month and Year	
			ጥራጥራ	ዳቦና ሌሎች የተዘጋጁ የምግቦች	ሥጋ	ወተት፣ ዓይብና እንቅላል	ዘይትና ቅብቶች	አትክልትና ፍሬፍሬ	ቅመግ ቅመግ	ጽጌትና ሌሎች ሥራሥሮች	ታላቅታ ስፍና ሻይ ቅጠል	ሌሎች የምግቦች	የግዘፈጫ አገልግሎት			
ታህሳስ 1999	100.0	100.0	100.0	100.0	100.0	100.0	100.0	100.0	100.0	100.0	100.0	100.0	100.0	100.0	100.0	December 2006
ጥር 1999	97.9	94.9	100.5	100.4	101.4	100.7	104.0	101.5	102.3	96.0	98.8	97.3	99.7	100.1	100.1	January 2007
የካቲት 1999	106.2	105.8	103.1	101.8	101.2	101.7	105.9	109.0	146.8	96.6	102.1	99.8	100.6	99.8	99.8	February "
መጋቢት 1999	108.5	107.7	104.6	104.0	97.6	99.9	115.6	111.3	152.1	99.4	103.6	95.6	105.2	104.1	104.1	March "
ሚያዝያ 1999	110.2	106.2	104.5	109.9	111.7	102.7	127.1	117.5	170.0	98.9	99.6	99.8	107.5	104.9	104.9	April "
ግንቦት 1999	111.6	107.5	105.2	108.3	106.7	105.6	131.0	103.1	207.2	96.0	100.2	93.7	107.3	98.9	98.9	May "
ሰኔ 1999	112.7	107.7	106.4	109.4	105.9	107.0	130.8	104.8	203.9	94.8	100.4	99.4	108.9	106.1	106.1	June "
2000																2007/2008
ሐምሌ 1999	116.1	110.7	109.1	111.8	107.0	114.4	135.4	113.8	215.7	93.1	102.3	100.6	108.4	109.7	109.7	July "
ኔሐሴ 1999	124.8	115.2	110.6	114.5	108.0	118.5	136.5	119.2	319.1	93.7	103.9	100.4	108.8	111.8	111.8	August "
መስከረም 2000	130.1	122.1	112.0	115.1	109.2	120.8	139.1	129.5	342.3	95.2	106.8	96.7	108.2	112.4	112.4	September "
ገብግብ 2000	132.3	123.6	113.3	117.1	112.7	121.6	149.8	133.7	343.5	95.4	114.1	97.9	106.5	114.4	114.4	October "
ገብር 2000	131.4	126.3	112.2	123.2	115.7	124.9	153.1	146.2	276.9	108.0	127.9	93.1	105.3	116.9	116.9	November "
ታህሳስ 2000	130.8	126.1	110.4	123.6	115.3	120.4	154.1	146.1	265.4	110.9	128.0	95.6	104.4	119.0	119.0	December "
ጥር 2000	132.2	128.0	109.6	124.4	116.9	119.4	159.2	148.8	262.8	114.9	132.6	95.6	104.8	120.1	120.1	January 2008
የካቲት 2000	134.9	127.3	114.5	130.6	122.2	121.2	171.2	143.8	276.6	124.1	136.6	104.1	105.8	123.9	123.9	February "
መጋቢት 2000	142.5	139.2	122.4	137.1	124.8	129.3	172.6	131.0	280.0	140.8	137.2	114.8	104.7	127.2	127.2	March "
ሚያዝያ 2000	145.0	142.8	123.3	140.0	124.6	131.3	182.0	125.7	285.3	139.7	136.9	115.3	106.7	128.9	128.9	April "
ግንቦት 2000	164.3	173.8	129.6	154.4	128.1	136.8	191.7	116.4	328.0	170.7	138.6	123.9	108.0	132.0	132.0	May "

Revised from January 2007 - November 2007

ሠንጠረዥ 6b:- ጠቅላላ የምት ጠቅላላ የምት ክፍሎች የ ስንጠረዥ ዋጋ መመዘኛ ሊገደዘበ ለቤሕንገራ ገምዝ ክልል ውጤት
 ታህሳስ 1999 = 100

Table 6b: Consumer Price Index of Total Food and Its Components for the Benishangul Gumuz Regional state
 December 2006 = 100

ወር ዓመት	ጠቅላላ ምት	እህል	በቤት ውስጥ የተወሰዱ የምት ዓይነቶች			FOOD TAKEN AT HOME								ዘቢት ውጪ የተወሰዱ ምት	Month and Year
			ጥራጥረ	ዳቦና ሌሎች የተዘጋጁ ምት	ሥጋ	ወተት+ ዓይብና እንቁላል	ዘይትና ቅባቶች	አትክልትና ፍራፍረ	ቅመም ቅመም	ድንችና ሌሎች ሥራሥርች	ያልተቀላ ቡናና ጃይ ቅጠል	ሌሎች ምት	የግብረጫ አገልግሎት		
	Food Total	Cereals	Pulses	Bread and other Prepared Food	Meat	Milk,Cheese and Egg	Oils and Fats	Vegetables and Fruits	Spices	Potatoes, Other Tubers and Stems	Coffee (beans, whole) and Tea Leaves	Other Food Items	Milling Charges	Food taken away from home	
ታህሳስ 1999	100.0	100.0	100.0	100.0	100.0	100.0	100.0	100.0	100.0	100.0	100.0	100.0	100.0	100.0	December 2006
ጥር 1999	99.1	97.0	105.8	99.8	100.5	99.1	101.5	93.8	114.1	99.6	100.5	102.6	103.0	98.7	January 2007
የኮቲት 1999	100.0	98.9	101.1	99.7	100.7	100.5	101.9	101.0	112.9	105.4	100.5	99.6	103.9	97.5	February "
ጠቅላላ 1999	104.3	99.4	111.3	102.1	110.5	100.7	105.0	118.4	149.0	96.3	100.5	97.8	104.0	99.1	March "
ጢያዝያ 1999	105.3	97.2	107.0	104.0	109.1	99.1	116.2	117.7	179.0	95.1	102.5	100.1	109.8	102.8	April "
ግንቦት 1999	107.8	98.5	108.4	108.8	116.8	96.3	115.9	109.4	187.4	119.1	111.5	107.9	108.1	106.4	May "
ሰኔ 1999	108.8	101.5	108.7	111.2	117.0	95.5	118.4	104.5	193.4	110.4	112.2	100.9	110.0	105.5	June "
2000															2007/2008
ሐምሌ 1999	114.9	108.8	111.9	113.7	127.0	103.7	123.0	111.0	207.4	113.3	121.5	99.7	110.0	105.5	July "
ኦገስት 1999	123.2	116.4	111.3	114.8	126.7	104.6	123.4	113.0	329.3	111.2	123.6	100.6	110.0	105.5	August "
መስከረም 2000	133.4	132.9	112.6	121.0	127.1	103.3	126.5	117.1	381.0	116.5	124.0	99.7	109.2	107.4	September "
ጥቅምት 2000	134.6	134.9	111.5	118.8	126.7	105.1	131.9	108.0	390.0	116.1	124.8	97.0	107.8	110.7	October "
ንሐር 2000	135.7	138.1	111.8	117.5	126.6	106.9	130.3	105.9	384.5	123.4	124.0	96.2	107.8	111.9	November "
ታህሳስ 2000	139.1	148.6	97.5	113.7	119.0	104.1	135.6	110.3	366.8	118.9	126.5	96.5	107.9	115.5	December "
ጥር 2000	146.6	160.5	106.2	123.1	125.1	106.5	139.7	115.7	360.7	126.2	130.5	105.3	112.0	116.5	January 2008
የኮቲት 2000	154.8	171.6	106.6	135.1	128.4	107.7	151.1	126.7	373.8	141.1	127.1	110.2	118.8	121.6	February "
ጠቅላላ 2000	161.2	177.9	113.0	140.4	131.4	109.9	153.1	124.4	437.3	135.0	132.1	112.6	116.3	123.7	March "
ጢያዝያ 2000	160.0	178.2	116.3	141.7	136.6	109.4	155.0	125.6	386.5	130.1	134.2	108.3	109.2	124.8	April "
ግንቦት 2000	167.9	190.8	119.0	148.7	143.6	115.5	167.6	124.9	385.4	130.9	139.6	109.9	109.2	130.8	May "

Revised from January 2007 - November 2007

ሠንጠረዥ 7A:- ጠቅላላ የምግብ ወጪዎች የጥገና ስርዓት የጋ ሙዚየም ለደረጃ ለስተዳደር ካውንስል
 ታህሳስ 1999 = 100

Table 7b: Consumer Price Index of Total Food and Its Components for the Dire Dawa Administrative Council
 December 2006 = 100

ወርና ዓመት	ጠቅላላ የምግብ	እህል	በቤት ውስጥ የተወሰዱ የምግብ ዓይነቶች			FOOD TAKEN AT HOME								ከቤት ውጪ የተወሰዱ የምግቦች	Month and Year	
			ጥሬ-ጥሬ	ዳቦና ሌሎች የተዘጋጁ የምግቦች	ሥጋ	ወተት፣ ዓይብና እንቅላል	ዘይትና ቅብጮች	አትክልትና ፍሬ-ፍሬ	ቅመግ ቅመም	ጽጌትና ሌሎች ሥራ-ሥሮች	ታፕሎት፣ ሌሎች ትግል	ሌሎች የምግቦች	የግብፈጫ አገልግሎት			
ታህሳስ 1999	100.0	100.0	100.0	100.0	100.0	100.0	100.0	100.0	100.0	100.0	100.0	100.0	100.0	100.0	100.0	December 2006
ጥር 1999	99.2	97.2	101.0	100.8	99.9	98.9	97.8	95.6	95.0	93.8	102.5	97.9	100.0	100.0	100.0	January 2007
የካቲት 1999	100.2	97.1	111.5	100.0	98.3	100.3	97.9	96.4	116.7	85.4	109.4	99.7	100.0	90.5	90.5	February "
መጋቢት 1999	108.2	99.4	119.9	109.3	99.2	99.6	117.0	110.7	186.1	82.2	124.2	98.3	100.0	90.8	90.8	March "
ጊዳር 1999	109.4	102.2	138.2	108.8	105.6	102.0	117.9	104.4	187.4	83.8	123.3	95.1	100.0	88.3	88.3	April "
ጥንሰት 1999	110.8	102.0	143.9	104.3	98.4	103.3	117.2	124.8	224.9	95.9	123.1	91.4	95.3	92.2	92.2	May "
ሰኔ 1999	111.6	107.8	147.6	104.3	100.9	102.7	102.4	132.4	223.6	94.8	121.1	90.7	95.3	90.3	90.3	June "
2000																2007/2008
ሐምሌ 1999	113.6	110.0	148.2	105.0	99.9	102.8	102.6	124.8	269.3	93.3	124.6	86.8	95.3	93.4	93.4	July "
ኔሐሴ 1999	120.1	121.6	149.6	105.7	99.6	102.6	130.9	127.0	370.2	93.3	121.3	90.3	95.3	93.4	93.4	August "
መስከረም 2000	123.5	120.7	145.3	111.2	105.8	103.7	130.6	127.8	416.7	92.2	132.7	87.6	95.3	94.3	94.3	September "
ጥቅምት 2000	121.5	118.5	131.6	104.1	102.0	104.6	140.4	129.6	416.7	95.9	131.8	88.1	95.3	94.7	94.7	October "
ገብር 2000	121.2	123.3	130.4	106.6	105.0	110.8	138.6	128.2	254.2	98.0	131.2	88.6	95.3	110.1	110.1	November "
ታህሳስ 2000	123.3	125.0	133.1	108.5	103.6	106.6	145.6	136.8	303.9	102.2	131.0	89.4	86.6	109.7	109.7	December "
ጥር 2000	128.9	125.9	130.0	129.9	105.5	108.8	159.3	145.8	311.1	128.0	130.6	90.9	86.6	109.9	109.9	January 2008
የካቲት 2000	134.4	133.6	143.6	133.8	106.8	118.6	160.8	153.4	340.8	239.2	129.2	99.4	86.6	99.4	99.4	February "
መጋቢት 2000	142.8	147.2	146.5	144.2	106.7	122.0	165.5	139.7	337.2	243.0	149.2	102.9	86.6	102.9	102.9	March "
ጊዳር 2000	145.4	155.3	152.9	141.5	106.4	135.0	169.6	123.0	381.2	221.9	147.9	106.8	86.6	106.8	106.8	April "
ጥንሰት 2000	159.5	183.7	175.3	158.9	125.9	152.8	185.7	118.1	413.2	322.0	137.2	106.8	86.6	106.8	106.8	May "

Revised from January 2007 - November 2007

ሠንጠረዥ 8ላ፡- ጠቅላላ የምግብና የምግብ ክፍሎች የ ሽግግር ዓጋ መመዘኛ ኢንዱስትሪ ለጋምቤላ ሕዝቦች ክልላዊ መገንጠያ
 ታህሳስ 1999 = 100

Table 8b: Consumer Price Index of Total Food and Its Components for the Gambela Peoples Regional State
 December 2006 = 100

ወርና ዓመት	ጠቅላላ ምግብ Food Total	እህል Cereals	በቤት ውስጥ የተወሰሱ የምግብ ዓይነቶች			FOOD TAKEN AT HOME							ከቤት ውጭ የተወሰዱ ምግቦች Food taken away from home	Month and Year		
			ጥሬጥሬ Pulses	ዳቦና ሌሎች የተዘጋጁ ምግቦች Bread and other Prepared Food	ሥጋ Meat	ወተት፣ ዓይብና እንቁላል Milk, Cheese and Egg	ዘይትና ቅባቶች Oils and Fats	አትክልትና ፍሬፍሬ Vegetables and Fruits	ቅመግ ቅመፍ Spices	ድንችና ሌሎች ሥራሥርቶች Potatoes, Other Tubers and Stems	ያልተቀላቀሉ ቡናና ጃይ ቅጠል Coffee (beans, whole) and Tea Leaves	ሌሎች ምግቦች Other Food Items			የግብረጫ አገልግሎት Milling Charges	
ታህሳስ 1999	100.0	100.0	100.0	100.0	100.0	100.0	100.0	100.0	100.0	100.0	100.0	100.0	100.0	100.0	100.0	December 2006
ጥር 1999	100.3	97.0	101.4	122.4	102.5	100.7	99.9	104.4	100.0	100.0	100.6	101.2	115.5	120.7	120.7	January 2007
የኮቲት 1999	102.6	93.2	109.3	124.9	111.8	121.4	123.6	107.4	121.7	118.6	100.5	92.9	115.5	115.4	115.4	February "
መጋቢት 1999	106.6	100.0	110.4	125.0	108.0	100.1	119.9	114.0	182.5	120.9	100.7	100.0	108.7	121.4	121.4	March "
ሚያዝያ 1999	111.4	101.5	114.1	125.6	122.5	121.6	126.4	117.4	216.4	123.7	105.4	100.0	104.9	125.4	125.4	April "
ግንቦት 1999	107.3	94.2	121.6	129.6	119.4	122.9	134.4	115.1	243.3	100.8	102.5	98.5	104.9	123.9	123.9	May "
ሰኔ 1999	108.2	95.6	121.7	125.7	122.5	124.8	131.2	115.5	243.3	97.2	103.7	98.8	104.9	120.7	120.7	June "
2000																2007/2008
ሐምሌ 1999	112.3	99.9	121.9	133.4	128.2	130.5	129.4	123.0	243.3	97.2	106.6	98.1	104.9	121.0	121.0	July "
ኦገስት 1999	120.9	111.2	120.8	132.8	130.7	131.3	137.5	127.3	425.8	98.7	107.0	99.4	104.9	121.4	121.4	August "
መስከረም 2000	125.3	118.2	124.1	134.2	128.9	134.7	138.2	133.9	425.8	98.8	112.2	100.2	104.9	127.7	127.7	September "
ጥቅምት 2000	124.8	118.1	123.2	135.0	129.6	130.5	142.8	126.7	425.8	98.8	121.4	96.9	105.8	121.4	121.4	October "
ንሐር 2000	126.5	118.5	123.1	134.7	129.1	134.5	142.6	131.9	425.8	108.7	131.5	100.1	105.8	131.5	131.5	November "
ታህሳስ 2000	126.6	117.6	125.2	136.0	126.0	134.5	147.5	133.9	425.8	125.3	122.4	107.3	105.8	133.9	133.9	December "
ጥር 2000	128.8	118.3	127.1	136.0	128.0	134.5	149.1	134.6	425.8	141.9	133.4	111.2	115.5	136.5	136.5	January 2008
የኮቲት 2000	133.5	120.6	132.5	137.0	130.4	135.1	150.9	136.3	425.8	216.6	121.5	117.3	115.5	141.5	141.5	February "
መጋቢት 2000	134.4	121.9	134.8	138.4	131.0	128.4	163.5	137.1	425.8	193.7	132.5	123.4	115.5	132.7	132.7	March "
ሚያዝያ 2000	131.4	118.7	133.5	141.3	131.4	127.5	161.6	138.5	425.8	158.1	135.1	116.3	115.5	128.9	128.9	April "
ግንቦት 2000	147.7	135.3	164.5	199.9	142.3	128.4	167.8	162.0	425.8	167.6	131.1	133.2	115.5	140.3	140.3	May "

Revised from January 2007 - November 2007

ሠንጠረዥ 9ሐ፡- ጠቅላላ የምግብ ዕቃዎች የዕቅድ ዕቅድ የ ሽግግር ዕቅድ መመዘኛ ኢንዱስትሪ ስራዎች ክልል ወገን ሥጦት
 ታህሳስ 1999 = 100

Table 9b: Consumer Price Index of Total Food and Its Components for the Harari People Regional State
 December 2006 = 100

ወርና ዓመት	ጠቅላላ ምግብ	እህል	በቤት ውስጥ የተወሰዱ የምግብ ዓይነቶች			FOOD TAKEN AT HOME							ከቤት ውጭ የተወሰዱ ምግቦች	ወር እና ዓመት	
			ጥሬ ጥሬ	ዳቦና ሌሎች የተዘጋጁ ምግቦች	ሥጋ	ወተትና ዓይብና እንቁሳል	ዘይትና ቅባቶች	አትክልትና ፍሬፍሬ	ቅመግ ቅመጦ	ድንችና ሌሎች ሥራ ሥሮች	ያልተቀላቀሉ ቡናና ጃይ ቅጠል	ሌሎች ምግቦች			የግብርማ አገልግሎት
	Food Total	Cereals	Pulses	Bread and other Prepared Food	Meat	Milk, Cheese and Egg	Oils and Fats	Vegetables and Fruits	Spices	Potatoes, Other Tubers and Stems	Coffee (beans, whole) and Tea Leaves	Other Food Items	Milling Charges	Food taken away from home	Month and Year
ታህሳስ 1999	100.0	100.0	100.0	100.0	100.0	100.0	100.0	100.0	100.0	100.0	100.0	100.0	100.0	100.0	December 2006
ጥር 1999	102.5	101.1	100.3	101.6	101.2	100.7	100.5	138.2	103.5	98.9	99.7	100.3	100.0	100.0	January 2007
የኮቲት 1999	100.9	99.5	105.5	90.7	101.0	97.9	101.0	136.9	112.9	98.9	99.5	98.8	100.0	101.5	February "
መጋቢት 1999	104.8	102.2	106.5	92.1	101.4	98.4	113.6	138.3	204.9	111.1	99.6	96.9	100.0	106.2	March "
ሚያዝያ 1999	102.5	100.7	107.4	90.8	106.2	101.8	114.5	148.9	190.1	111.1	85.7	95.7	100.0	109.3	April "
ግንቦት 1999	103.4	102.2	119.6	92.4	100.3	106.4	114.6	148.2	186.7	111.1	86.6	92.5	100.0	109.3	May "
ሰኔ 1999	103.9	103.0	118.4	94.5	95.1	112.7	110.8	150.8	206.4	106.1	86.7	91.8	100.0	107.3	June "
2000															2007/2008
ሐምሌ 1999	107.9	105.7	118.5	94.9	101.2	112.0	127.2	168.8	244.1	106.1	87.8	92.6	100.0	109.2	July "
ኦገስት 1999	114.9	111.6	121.4	102.1	110.8	113.1	134.3	168.4	335.7	111.1	94.6	95.8	100.0	112.8	August "
መስከረም 2000	115.6	111.9	122.9	101.8	113.2	114.9	139.8	170.1	324.1	111.1	94.5	99.2	100.0	113.8	September "
ጥቅምት 2000	116.5	114.9	121.3	101.6	106.8	114.4	141.7	166.4	321.0	111.1	97.0	98.2	100.0	114.6	October "
ንሐር 2000	114.8	112.9	121.1	103.0	103.8	110.9	141.8	181.1	242.4	111.1	96.8	95.8	100.0	113.5	November "
ታህሳስ 2000	116.2	112.8	120.4	102.2	106.8	112.9	156.6	175.1	285.7	116.7	96.3	96.6	100.0	113.5	December "
ጥር 2000	119.5	114.4	119.2	101.9	107.5	106.6	157.2	192.2	296.3	231.7	97.0	97.0	100.0	117.1	January 2008
የኮቲት 2000	124.4	120.6	133.6	122.2	109.1	117.7	170.3	142.5	315.1	286.7	95.6	98.2	100.0	120.6	February "
መጋቢት 2000	134.9	130.5	133.1	139.2	111.9	122.7	179.0	137.2	314.5	277.8	115.7	110.4	100.0	132.6	March "
ሚያዝያ 2000	140.2	136.1	137.1	144.7	116.9	124.7	181.3	117.0	338.9	222.2	133.9	111.2	100.0	134.6	April "
ግንቦት 2000	157.1	169.3	144.3	162.8	123.7	144.8	194.6	124.6	362.8	222.2	139.6	107.9	107.7	142.7	May "

Revised from January 2007 - November 2007

ሠንጠረዥ 10A:- ጠቅላላ የምግብ ክፍሎች የሽያጭ ዋጋ መመዘኛ ሊንደስ ለሊሮጊያ ክልል መንግሥት
 ታህሳስ 1999 = 100

Table 10b: Consumer Price Index of Total Food and Its Components for the Oromiya Regional State
 December 2006 = 100

ወር ዓመት	ጠቅላላ ምግብ	እህል	በቤት ውስጥ የተወሰዱ የምግብ ዓይነቶች			FOOD TAKEN AT HOME							ክፍት ወጪ የተወሰዱ ምግቦች	Month and Year		
			ጥሬጥሬ	ዳቦና ሌሎች የተዘጋጁ ምግቦች	ሥጋ	ወተት፣ ዓይብና እንቅላል	ዘይትና ትብቶች	አትክልትና ፍሬፍሬ	ትመግ ትመፍ	ድንችና ሌሎች ሥራሥሮች	ያልተቀላ ቡናና ሻይ ትጠል	ሌሎች ምግቦች			የግዘፈጫ አገልግሎት	
ታህሳስ 1999	100.0	100.0	100.0	100.0	100.0	100.0	100.0	100.0	100.0	100.0	100.0	100.0	100.0	100.0	100.0	December 2006
ጥር 1999	100.6	99.4	99.5	105.5	100.3	100.5	105.2	98.1	109.7	101.0	99.7	101.3	105.0	101.0	101.0	January 2007
የኮቲት 1999	102.4	98.7	110.8	107.6	102.9	100.1	106.7	103.1	126.1	106.1	99.7	94.7	106.6	105.8	105.8	February "
መጋቢት 1999	105.4	97.4	111.3	112.3	103.8	100.8	108.4	111.7	210.1	111.5	103.1	94.4	116.7	101.4	101.4	March "
ጊዳር 1999	108.3	98.6	112.8	117.7	107.9	106.2	116.3	116.8	220.4	117.5	103.6	97.8	116.8	104.2	104.2	April "
ግንቦት 1999	107.5	99.2	111.8	120.3	103.8	104.3	118.3	110.4	221.7	110.0	103.0	96.8	111.9	105.0	105.0	May "
ሰኔ 1999	109.2	100.4	111.3	105.9	109.0	102.9	121.2	114.6	264.4	105.9	105.8	96.8	111.8	107.6	107.6	June "
2000																2007/2008
ሐምሌ 1999	112.4	102.8	114.3	121.9	108.8	104.1	125.0	111.4	275.1	107.2	111.2	99.1	111.2	115.6	115.6	July "
ኔሐሴ 1999	116.4	104.4	115.6	123.4	110.8	104.0	129.1	113.3	377.1	107.4	114.3	97.0	112.1	115.0	115.0	August "
መስከረም 2000	119.2	107.8	114.0	131.2	114.0	101.8	130.0	111.1	413.8	112.8	115.0	91.5	112.0	116.2	116.2	September "
ጥቅምት 2000	122.9	113.9	114.7	130.8	107.7	104.8	140.8	117.4	424.1	112.1	116.2	92.2	112.4	115.5	115.5	October "
ገዳር 2000	123.1	114.5	115.4	134.9	112.9	104.7	145.4	132.1	332.8	115.6	123.1	95.4	112.7	115.4	115.4	November "
ታህሳስ 2000	125.9	118.6	117.0	133.6	113.3	108.8	146.5	143.6	337.8	120.9	118.4	94.4	114.5	118.4	118.4	December "
ጥር 2000	128.3	118.8	120.1	134.3	117.8	110.9	149.9	154.1	342.6	130.0	119.7	95.7	116.9	120.4	120.4	January 2008
የኮቲት 2000	136.2	126.3	123.1	156.4	119.7	122.3	157.3	166.1	374.5	142.3	122.4	103.8	121.5	122.3	122.3	February "
መጋቢት 2000	151.5	150.3	134.5	163.3	124.9	128.0	164.8	189.4	402.9	154.4	125.8	115.4	123.0	127.9	127.9	March "
ጊዳር 2000	154.4	154.4	137.3	165.3	126.3	130.6	169.2	189.5	406.4	159.6	126.6	107.0	124.0	130.1	130.1	April "
ግንቦት 2000	173.3	190.7	147.0	173.7	136.7	136.2	182.9	194.3	407.9	163.6	131.9	115.1	128.7	133.1	133.1	May "

Revised from January 2007 - November 2007

ወንጠራዥ 11ላ፡- ጠቅላላ የምግብ ክፍሎች የ ሽግግር ዋጋ መወሰኛ ሊገደክበት ለደብዳቤ ክልላዊ መንግሥት ጋህሳስ 1999 = 100

Table 11b: Consumer Price Index of Total Food and Its Components for the SNNP Regional State December 2006 = 100

ወርና ዓመት	ጠቅላላ የምግብ	እህል	በቤት ውስጥ የተወሰዱ የምግብ ዓይነቶች			FOOD TAKEN AT HOME								ክቢት ውጪ የተወሰዱ የምግቦች	Month and Year	
			ጥራጥራ	ላቦና ሌሎች የተዘጋጁ የምግቦች	ሥጋ	ወተት፣ ዓይብና እንቅላል	ዘይትና ቅብቶች	አትክልትና ፍሬፍሬ	ትመግ ትመግ	ድንችና ሌሎች ሥራሥሮች	ያልተቀላቀሉት ቡናና ገይ ቅጠል	ሌሎች የምግቦች	የግዘፈጫ አገልግሎት			
ጋህሳስ 1999	100.0	100.0	100.0	100.0	100.0	100.0	100.0	100.0	100.0	100.0	100.0	100.0	100.0	100.0	100.0	December 2006
ጥር 1999	100.2	98.4	100.8	100.4	101.4	98.9	100.7	104.5	111.8	100.1	100.2	100.5	101.1	99.8	100.0	January 2007
የካቲት 1999	99.4	96.4	102.3	102.3	102.6	101.4	102.6	102.2	109.4	99.0	99.8	101.7	102.1	100.0	100.0	February "
መጋቢት 1999	100.0	94.5	103.8	103.1	105.0	100.0	106.3	105.7	161.2	94.8	104.0	104.6	102.7	98.7	100.0	March "
ሚያዝያ 1999	102.2	97.8	106.5	102.3	112.0	100.8	108.9	106.8	169.5	92.0	103.6	106.2	103.2	108.4	100.0	April "
ግንቦት 1999	102.7	97.3	109.3	105.8	109.3	107.5	111.3	103.1	188.4	91.6	104.4	103.1	108.3	107.5	100.0	May "
ሰኔ 1999	105.0	98.2	109.4	107.9	108.2	107.8	112.5	104.0	190.6	98.8	106.8	104.3	106.9	111.0	100.0	June "
2000																2007/2008
ሐምሌ 1999	108.3	101.8	113.9	112.5	109.9	107.9	114.7	101.4	219.0	100.5	117.7	100.5	100.8	111.6	100.0	July "
ኔሐሴ 1999	110.1	104.7	116.7	112.7	111.5	108.3	118.8	103.4	219.5	101.6	118.7	101.8	100.0	111.7	100.0	August "
መስከረም 2000	112.8	108.1	117.4	114.5	114.7	108.3	125.0	106.5	246.5	99.5	125.3	103.0	101.5	112.6	100.0	September "
ጥቅምት 2000	114.6	109.6	118.7	115.6	114.3	115.0	128.6	120.4	299.5	99.2	124.3	101.6	101.1	98.4	100.0	October "
ገብር 2000	114.2	110.0	119.4	117.2	115.2	113.6	130.8	121.0	247.1	100.9	126.6	100.3	101.2	98.7	100.0	November "
ጋህሳስ 2000	117.0	112.3	118.7	116.7	116.2	114.0	133.9	125.2	247.4	108.2	129.4	99.6	100.4	99.8	100.0	December "
ጥር 2000	119.9	114.6	117.8	117.7	115.6	114.4	135.7	137.0	251.2	115.2	127.1	105.0	100.8	100.4	100.0	January 2008
የካቲት 2000	125.8	117.6	119.7	120.5	121.7	119.0	158.6	150.0	269.0	121.5	134.2	113.1	108.8	104.3	100.0	February "
መጋቢት 2000	142.8	147.1	124.8	126.2	125.1	125.4	168.7	201.7	269.4	128.2	142.0	125.6	111.2	108.1	100.0	March "
ሚያዝያ 2000	148.0	156.3	127.7	127.1	129.3	129.1	168.7	202.7	284.0	131.0	144.7	125.3	112.7	111.4	100.0	April "
ግንቦት 2000	160.5	185.2	133.0	139.8	134.4	131.8	174.8	201.0	293.1	135.1	147.2	129.8	114.0	111.5	100.0	May "

Revised from January 2007 - November 2007

ሠንጠረዥ 12ላ:- ጠቅላላ የምግብ ወጪዎች የገንዘብ ዋጋ መለኪያ ለገቢ ለሌሎች ክፍሎች የገንዘብ ዋጋ መለኪያ ለገቢ ለሌሎች ክፍሎች የገንዘብ ዋጋ መለኪያ ለገቢ ለሌሎች ክፍሎች
 ታህሳስ 1999 = 100

Table 12b: Consumer Price Index of Total Food and Its Components for the Somali Regional State
 December 2006 = 100

ወር ዓመት	ጠቅላላ ምግብ	እህል	በቤት ውስጥ የተወሰዱ የምግብ ዓይነቶች			FOOD TAKEN AT HOME							ከቤት ውጭ የተወሰዱ ምግቦች	Month and Year	
			ጥሬጥሬ	ዳቦና ሌሎች የተዘጋጁ ምግቦች	ሥጋ	ወተት፣ ዓይብና እንቁሳል	ዘይትና ቅባቶች	አትክልትና ፍሬፍሬ	ቅመግ ቅመጥ	ድንችና ሌሎች ሥራሥሮች	ያልተቀላ ቡናና ጃይ ቅጠል	ሌሎች ምግቦች			የግብርማ አገልግሎት
	Food Total	Cereals	Pulses	Bread and other Prepared Food	Meat	Milk, Cheese and Egg	Oils and Fats	Vegetables and Fruits	Spices	Potatoes, Other Tubers and Stems	Coffee (beans, whole) and Tea Leaves	Other Food Items	Milling Charges	Food taken away from home	
ታህሳስ 1999	100.0	100.0	100.0	100.0	100.0	100.0	100.0	100.0	100.0	100.0	100.0	100.0	100.0	100.0	December 2006
ጥር 1999	101.6	104.1	103.1	99.7	100.8	98.6	96.4	100.6	100.0	103.0	101.5	100.3	100.0	100.8	January 2007
ፀደቅ 1999	101.8	106.1	100.4	101.6	101.6	97.7	99.7	99.7	100.0	103.0	97.8	100.5	100.0	100.9	February "
ጠቃሚ 1999	103.0	105.1	103.8	101.3	101.9	101.4	98.6	115.5	166.7	103.0	100.6	95.4	106.9	101.8	March "
ጊደብ 1999	102.0	103.6	103.8	104.5	101.8	96.1	98.9	109.8	188.9	103.0	100.6	96.6	103.1	100.0	April "
ግንቦት 1999	101.9	106.4	102.6	105.5	101.0	86.2	99.4	123.4	166.7	103.0	99.3	94.5	94.7	107.8	May "
ሰኔ 1999	102.3	104.9	102.8	104.9	103.9	86.4	99.7	118.3	250.0	101.7	100.1	93.3	98.2	114.3	June "
2000															2007/2008
ሐምሌ 1999	105.0	107.7	109.9	104.1	105.1	85.0	105.3	118.5	250.0	102.2	107.3	95.0	98.2	115.0	July "
ኔሐሴ 1999	109.3	113.4	111.2	106.8	114.3	91.4	108.3	116.9	333.3	102.0	105.3	97.1	97.6	120.8	August "
መስከረም 2000	110.7	115.2	111.2	109.2	114.4	90.1	113.7	119.1	416.7	100.7	105.2	95.6	98.2	118.3	September "
ጥቅምት 2000	113.0	117.4	115.5	108.3	136.6	91.7	128.6	118.9	416.7	99.1	102.8	98.3	96.3	116.0	October "
ንሐር 2000	112.2	123.2	116.2	110.3	120.1	90.2	132.8	117.7	250.0	98.7	102.9	87.6	100.0	113.7	November "
ታህሳስ 2000	111.5	118.7	115.4	114.1	122.6	91.7	135.5	118.0	250.0	106.9	103.3	89.1	100.8	114.1	December "
ጥር 2000	115.1	121.4	112.8	112.4	125.1	94.0	135.3	159.6	250.0	112.1	110.3	89.0	94.2	115.5	January 2008
ፀደቅ 2000	128.5	138.3	122.6	123.9	130.0	110.6	146.2	151.4	250.0	156.7	123.5	102.8	94.2	117.6	February "
ጠቃሚ 2000	133.2	141.5	133.3	125.7	130.5	111.0	153.0	139.0	283.3	196.5	129.9	117.6	101.6	123.6	March "
ጊደብ 2000	136.3	145.6	136.3	126.6	130.0	112.9	160.9	134.9	291.7	196.1	135.0	118.6	103.3	122.8	April "
ግንቦት 2000	149.3	170.3	142.4	137.6	139.4	125.5	165.6	134.2	297.3	208.7	139.8	117.8	100.0	127.3	May "

Revised from January 2007 - November 2007

ወንጠረዥ 13b:- ጠቅላላ የምግብ ወጪዎች የገንዘብ ክፍሎች የ ሽግግር ዋጋ መመዘኛ ሊንደስስ ለትግራይ ክልል የገንዘብ ደረጃ መግለጫ
 ታህሳስ 1999 = 100

Table 13b: Consumer Price Index of Total Food and Its Components for the Tigray Regional State
 December 2006 = 100

ወርና ዓመት	ጠቅላላ ምግብ	እህል	በቤት ውስጥ የተወሰሱ የምግብ ዓይነቶች			FOOD TAKEN AT HOME							ከቤት ውጭ የተወሰዱ ምግቦች	ወር እና ዓመት	
			ጥሬጥሬ	ዳቦና ሌሎች የተዘጋጁ ምግቦች	ሥጋ	ወተት+ ዓይብና እንቁሳል	ዘይትና ቅባቶች	አትክልትና ፍሬፍሬ	ቅመግ ቅመጦ	ድንችና ሌሎች ሥራሥሮች	ያልተቀላቀሉ ቡናና ጃይ ቅጠል	ሌሎች ምግቦች			የግብረጫ አገልግሎት
	Food Total	Cereals	Pulses	Bread and other Prepared Food	Meat	Milk, Cheese and Egg	Oils and Fats	Vegetables and Fruits	Spices	Potatoes, Other Tubers and Stems	Coffee (beans, whole) and Tea Leaves	Other Food Items	Milling Charges	Food taken away from home	Month and Year
ታህሳስ 1999	100.0	100.0	100.0	100.0	100.0	100.0	100.0	100.0	100.0	100.0	100.0	100.0	100.0	100.0	December 2006
ጥር 1999	101.5	102.0	100.2	106.0	99.9	102.5	101.7	105.5	102.4	95.2	100.5	99.1	98.5	99.9	January 2007
ፀደቅ 1999	101.9	100.9	101.7	104.1	100.8	103.1	106.5	109.2	111.7	96.9	99.9	97.7	98.5	100.0	February "
መጋቢት 1999	105.5	101.9	105.6	107.0	95.7	101.0	118.6	108.5	166.5	112.8	101.3	96.4	101.4	100.1	March "
ሚያዝያ 1999	107.0	99.7	111.1	108.6	113.9	100.8	123.1	110.8	175.7	112.8	100.8	97.5	104.9	98.5	April "
ግንቦት 1999	109.6	100.4	110.6	104.7	113.1	107.4	126.6	104.3	209.9	112.8	98.1	99.7	111.2	107.4	May "
ሰኔ 1999	111.1	101.6	109.7	104.8	115.0	109.6	122.5	109.0	224.1	102.2	98.5	100.6	117.1	106.0	June "
2000															2007/2008
ሐምሌ 1999	114.7	104.3	113.5	107.9	117.1	107.1	124.4	118.1	250.9	103.5	101.2	97.9	110.6	107.3	July "
ኔሐሴ 1999	122.7	109.1	114.6	110.8	118.7	108.3	132.4	130.9	338.0	103.6	106.6	98.1	110.9	107.8	August "
መስከረም 2000	131.5	114.3	121.2	111.3	122.6	110.3	146.0	139.8	404.5	113.7	114.1	96.2	113.5	119.1	September "
ጥቅምት 2000	134.0	116.6	124.8	118.0	119.5	110.0	148.6	149.3	410.9	123.8	122.7	96.0	110.7	120.1	October "
ንሐር 2000	129.8	115.6	125.8	119.0	120.0	109.9	146.4	140.7	338.3	126.6	122.8	95.1	110.9	121.5	November "
ታህሳስ 2000	130.8	117.8	126.5	119.8	120.6	110.8	149.5	139.3	322.9	124.2	126.7	97.4	111.8	123.7	December "
ጥር 2000	132.3	119.7	128.2	120.4	123.3	111.8	162.8	130.6	318.8	130.4	129.7	99.5	107.6	124.7	January 2008
ፀደቅ 2000	139.5	132.4	129.7	127.7	119.1	114.7	184.8	105.9	321.9	168.3	132.1	108.3	109.2	128.2	February "
መጋቢት 2000	155.2	158.3	133.1	133.5	120.3	116.5	194.9	102.4	342.4	183.7	135.9	111.6	119.1	129.2	March "
ሚያዝያ 2000	156.5	160.2	132.5	130.1	123.9	118.1	197.0	102.6	341.6	186.8	138.4	108.6	119.7	130.2	April "
ግንቦት 2000	166.7	173.5	139.8	139.3	131.4	125.7	204.1	106.1	355.4	212.8	144.3	116.0	121.0	135.2	May "

Revised from January 2007 - November 2007