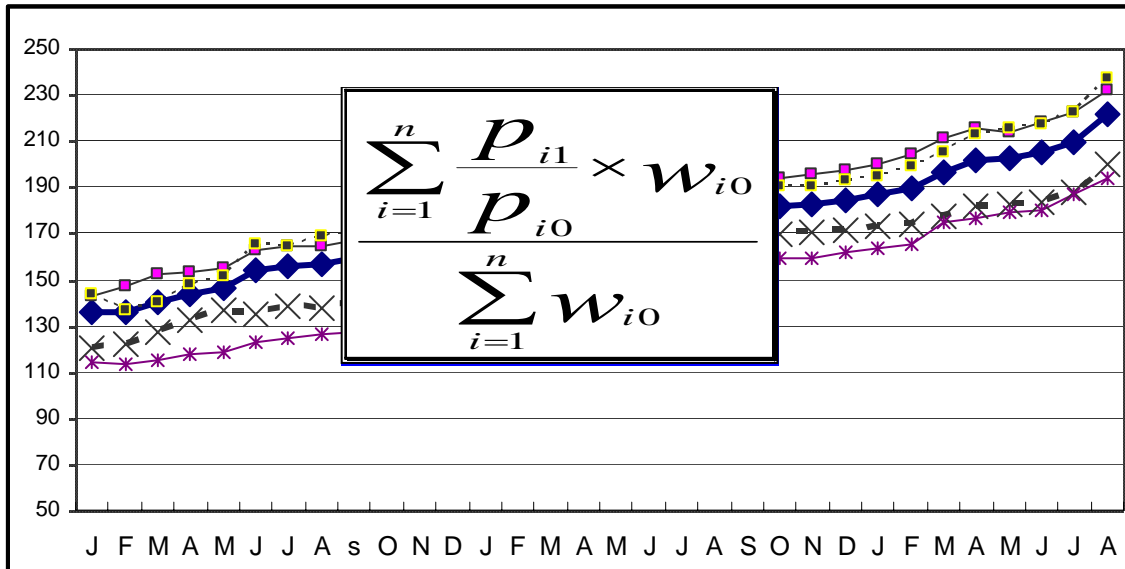


በኢትዮጵያ ፌዴራላዊ ዲሞክራሲያዊ ሪፐብሊክ
የማዕከላዊ ስታቲስቲክስ ኤጀንሲ

THE FEDERAL DEMOCRATIC REPUBLIC OF ETHIOPIA
CENTRAL STATISTICAL AGENCY

የአገር አቀፍና የክልሎች የሽማግሌት ዋጋ መመዘኛ ኢንዱክሶች
የታህሳስ ወር 2000 ዓ.ም.
[ታህሳስ 1999 = 100]
መረጃ ቁጥር 3

COUNTRY AND REGIONAL LEVEL CONSUMER PRICE INDICES



[December 2006 = 100]

For the month December 2007

Information No. 3

አዲስ አበባ

ጥር 15 ቀን 2000 ዓ.ም.

ADDIS ABABA

28 January 2008

Tel: 251-11-1 553011

Fax: 251-11-1550334.

Email: csa@ethionet.et

መግቢያ..... 1
 የወሩ ዋጋ ግሽበት ሁኔታ 7

የዘንድሮውና የአምናው ተመሳሳይ ወሮች የሽማግሌት ዋጋ መመዘኛ ጠቋሚ አሀዝ ንፅፅር በአገር አቀፍ ደረጃ 10

የዘንድሮውና የአምናው ተመሳሳይ ወሮች የሽማግሌት ዋጋ መመዘኛ ጠቋሚ አሀዝ ንፅፅር በአገር አቀፍና በክልሎች ደረጃ..... 11

የሠንጠረዦች ዝርዝር

ሠንጠረዥ ሀ: በጥናቱ የተሸፈኑ ገበያዎችና በኢንዱስትሪ ማዕቀፍ የተካተቱ ዕቃዎችና በዕቃዎች/አገልግሎቶች ብዛት በክልል..... 2

ሠንጠረዥ 1ሀ: ጠቅላላ የሽማግሌት ዋጋ መመዘኛ ኤንዱስትሪ በስሩ የተካተቱ ክፍሎች በአገር አቀፍ ደረጃ..... 12

ሠንጠረዥ 1ለ: ጠቅላላ ምግብና የምግብ ክፍሎች የሽማግሌት ዋጋ መመዘኛ ኤንዱስትሪ በአገር አቀፍ ደረጃ..... 13

ሠንጠረዥ 1ሐ: አገር አቀፍ የቤት ኪራይ፣ የቤት መስሪያ ዕቃዎች፣ ጭሃና ኤነርጂ የሽማግሌት ዋጋ መመዘኛ ኤንዱስትሪ 14

ሠንጠረዥ 2ሀ: ጠቅላላ የሽማግሌት ዋጋ መመዘኛ ኤንዱስትሪ በአገር አቀፍና በክልሎች ደረጃ 15

ሠንጠረዥ 2ለ: የምግብ ዋጋ መመዘኛ ኤንዱስትሪ ማጠቃለያ በአገር አቀፍ እና በክልሎች ደረጃ 17

ሠንጠረዥ 3ሀ: ጠቅላላ የሽማግሌት ዋጋ መመዘኛ ኤንዱስትሪ በስሩ የተካተቱ ክፍሎች ለአዲስ አበባ ከተማ መስተዳድር 19

ሠንጠረዥ 3ለ: ጠቅላላ ምግብና የምግብ ክፍሎች የሽማግሌት ዋጋ መመዘኛ ኤንዱስትሪ ለአዲስ አበባ ከተማ መስተዳድር 20

ሠንጠረዥ 4ሀ: ጠቅላላ የሽማግሌት ዋጋ መመዘኛ ኤንዱስትሪ በስሩ የተካተቱ ክፍሎች ለአፋር ክልላዊ መንግስት..... 21

ሠንጠረዥ 4ለ: ጠቅላላ ምግብና የምግብ ክፍሎች የሽማግሌት ዋጋ መመዘኛ ኤንዱስትሪ ለአፋር ክልላዊ መንግስት..... 22

ሠንጠረዥ 5ሀ: ጠቅላላ የሽማግሌት ዋጋ መመዘኛ ኤንዱስትሪ በስሩ የተካተቱ ክፍሎች ለአማራ ክልላዊ መንግስት..... 23

ሠንጠረዥ 5ለ: ጠቅላላ ምግብና የምግብ ክፍሎች የሽማግሌት ዋጋ መመዘኛ ኤንዱስትሪ ለአማራ ክልላዊ መንግስት..... 24

ሠንጠረዥ 6ሀ: ጠቅላላ የሽማግሌት ዋጋ መመዘኛ ኤንዱስትሪ በስሩ የተካተቱ ክፍሎች ለቤንሻንጉል-ጉሙዝ ክልላዊ መንግስት..... 25

ሠንጠረዥ 6ለ: ጠቅላላ ምግብና የምግብ ክፍሎች የሽማግሌት ዋጋ መመዘኛ ለቤንሻንጉል-ጉሙዝ ክልላዊ መንግስት..... 26

<p>ወንጠረዥ 7ሀ: ጠቅላላ የሽማግሌት ዋጋ መመዘኛ ኤንደክስና በስሩ የተካተቱ ክፍሎች ለድሬደዋ አስተዳደር ካውንስል</p>	27
<p>ወንጠረዥ 7ለ: ጠቅላላ ምግብና የምግብ ክፍሎች የሽማግሌት ዋጋ መመዘኛ ለድሬደዋ አስተዳደር ካውንስል</p>	28
<p>ወንጠረዥ 8ሀ: ጠቅላላ የሽማግሌት ዋጋ መመዘኛ ኤንደክስና በስሩ የተካተቱ ክፍሎች ለጋምቤላ ህዝቦች ክልላዊ መንግስት</p>	29
<p>ወንጠረዥ 8ለ: ጠቅላላ ምግብና የምግብ ክፍሎች የሽማግሌት ዋጋ መመዘኛ ለጋምቤላ ህዝቦች ክልላዊ መንግስት</p>	30
<p>ወንጠረዥ 9ሀ: ጠቅላላ የሽማግሌት ዋጋ መመዘኛ ኤንደክስና በስሩ የተካተቱ ክፍሎች ለለሐረር ህዝብ ክልላዊ መንግስት</p>	31
<p>ወንጠረዥ 9ለ: ጠቅላላ ምግብና የምግብ ክፍሎች የሽማግሌት ዋጋ መመዘኛ ኤንደክስ ለለሐረር ህዝብ ክልላዊ መንግስት</p>	32
<p>ወንጠረዥ 10ሀ: ጠቅላላ የሽማግሌት ዋጋ መመዘኛ ኤንደክስና በስሩ የተካተቱ ክፍሎች ለአሮሚያ ክልላዊ መንግስት</p>	33
<p>ወንጠረዥ 10ለ: ጠቅላላ ምግብና የምግብ ክፍሎች የሽማግሌት ዋጋ መመዘኛ ኤንደክስ ለአሮሚያ ክልላዊ መንግስት</p>	34
<p>ወንጠረዥ 11ሀ: ጠቅላላ የሽማግሌት ዋጋ መመዘኛ ኤንደክስና በስሩ የተካተቱ ክፍሎች ለደ.ኢ.ብ.ብ.ሀ ክልላዊ መንግስት</p>	35
<p>ወንጠረዥ 11ለ: ጠቅላላ ምግብና የምግብ ክፍሎች የሽማግሌት ዋጋ መመዘኛ ኤንደክስ ለደ.ኢ.ብ.ብ.ሀ ክልላዊ መንግስት</p>	36
<p>ወንጠረዥ 12ሀ: ጠቅላላ የሽማግሌት ዋጋ መመዘኛ ኤንደክስና በስሩ የተካተቱ ክፍሎች ለሶማሌ ክልላዊ መንግስት</p>	37
<p>ወንጠረዥ 12ለ: ጠቅላላ ምግብና የምግብ ክፍሎች የሽማግሌት ዋጋ መመዘኛ ኤንደክስ ለሶማሌ ክልላዊ መንግስት</p>	38
<p>ወንጠረዥ 13ሀ: ጠቅላላ የሽማግሌት ዋጋ መመዘኛ ኤንደክስና በስሩ የተካተቱ ክፍሎች ለትግራይ ክልላዊ መንግስት</p>	39
<p>ወንጠረዥ 13ለ: ጠቅላላ ምግብና የምግብ ክፍሎች የሽማግሌት ዋጋ መመዘኛ</p>	40

CONTENTS

	Page
Introduction.....	4
Inflation Rate.....	7
Comparison of CPI Movements, Current Vs Last Year's Similar Months, at country Level.....	10
Comparison of CPI Movements, Current Vs Last Year's Similar Months, at country and Regional Levels.....	11

List of Tables

Table a: Number of Markets Covered and Basket of Commodities by Region.....	2
Table 1a: General Consumer Price Index and Its Components at Country Level.....	12
Table 1b: Consumer Price Index of Total Food and Its Components at Country Level.....	13
Table 1c: Consumer Price Index of House Rent, Construction Materials, Water, Fuel and Power and Its Components at Country Level.....	14
Table 2a: Summary of General Consumer Price Indices at Country and Regional Levels.....	15
Table 2b: Summary of Consumer Price Indices of Food at Country and Regional Levels.....	17
Table 3a: General Consumer Price Index and Its Components for the City of Addis Ababa Administration.....	19
Table 3b: Consumer Price Index of Total Food and Its Components for the City of Addis Ababa Administration.....	20
Table 4a: General Consumer Price Index and Its Components for the Afar Regional State.....	21
Table 4b: Consumer Price Index of Total Food and Its Components for the Afar Regional State.....	22
Table 5a: General Consumer Price Index and Its	

Components for the Amhara Regional State.....	23
Table 5b: Consumer Price Index of Total Food and Its	
Components for the Amhara Regional State.....	24
Table 6a: General Consumer Price Index and Its	
Components for the Benishangul-Gumuz Regional State.....	25
Table 6b: Consumer Price Index of Total Food and Its	
Components for the Benishangul-Gumuz Regional State.....	26
Table 7a: General Consumer Price Index and Its	
Components for the Dire Dawa Administrative Council.....	27
Table 7b: Consumer Price Index of Total Food and Its	
Components for the Dire Dawa Administrative Council.....	28
Table 8a: General Consumer Price Index and Its	
Components for the Gambela Peoples Regional State.....	29
Table 8b: Consumer Price Index of Total Food and Its	
Components for the Gambela Peoples Regional State.....	30
Table 9a: General Consumer Price Index and Its	
Components for the Harari Peoples Regional State.....	31
Table 9b: Consumer Price Index of Total Food and Its	
Components for the Harari Peoples Regional State.....	32
Table 10a: General Consumer Price Index and Its	
Components for the Oromia Regional State.....	33
Table 10b: Consumer Price Index of Total Food and Its	
Components for the Oromia Regional State.....	34
Table 11a: General Consumer Price Index and Its	
Components for the SNNP Regional State.....	35
Table 11b: Consumer Price Index of Total Food and Its	
Components for the SNNP Regional State.....	36
Table 12a: General Consumer Price Index and Its	
Components for the Somali Regional State.....	37
Table 12b: Consumer Price Index of Total Food and Its	
Components for the Somali Regional State.....	38
Table 13a: General Consumer Price Index and Its	
Components for the Tigray Regional State.....	39
Table 13b: Consumer Price Index of Total Food and Its	
Components for the Tigray Regional State.....	40

መግቢያ

የሸማቾች ዋጋ መመዘኛ ኢንዱስትሪ ማለት ሸማቾች ለተወሰኑ ዕቃዎችና አገልግሎቶች የክፈሉትን አማካይ የዋጋ ለውጥ ለመለካት የሚያገለግል ጠቋሚ አህዝ ነው። የዋጋ መመዘኛ ኢንዱስትሪ አብዛኛውን ጊዜ መሠረት የሚያደርገው የቤተሰብ ገቢ፣ ፍጆታና ወጪ ጥናት ወጤት በሆነው ቤተሰቦች በዕቃዎችና ግልጋሎቶች ላይ ባወጡት የመቶኛ ድርሻ መጠንና የወቅቱ የገበያ ዋጋ ላይ ነው። በዚህ ሪፖርት ውስጥ የተካተቱት 12 ኢንዱስትሪዎች (የ11 ክልሎችና የአገር አቀፍ) መሠረት ያደረጉት የማዕከላዊ ስታቲስቲክስ ኤጀንሲ በ1996/97 በጀት ዓመት በመላ አገሪቱ በናሙና በተመረጡ ቦታዎች ያካሄደውን የቤተሰብ ገቢ፣ ፍጆታና ወጪ ጥናት ወጤት ነው።

ይህ ታህሳስ ወር 1999 ዓ.ምን መሠረት ያደረገው (ታህሳስ 1999=100) የሸማቾች ዋጋ መመዘኛ ኢንዱስትሪ በክልል ደረጃ ሲዘጋጅ በዓይነቱ ለሁለተኛ ጊዜ የተዘጋጀ ሲሆን በታህሣሥ 1993 ዓ.ም. መሠረት ያደረገውን የሸማቾች መመዘኛ ኢንዱስትሪ የሚተካ ነው። በአገር አቀፍ ደረጃ ከ1988 ጀምሮና በአዲስ አበባ ከተማ ደረጃ ደግሞ ከ1955 ዓ.ም ጀምሮ በየወሩ ተመሳሳይ ኢንዱስትሪዎች እየተዘጋጁ ለተጠቃሚዎች ሲሰራጩ መቆየታቸው ይታወቃል። እነዚህ 12 የዋጋ መመዘኛ ኢንዱስትሪዎች በአገሪቱ የሚገኙ 11 ክልሎችና የአገር አቀፍን ሪፖርት ጨምሮ የሚሸፍነው የዕቃዎችና የአገልግሎቶችን ክምችት በያዙ ሁለት ዋና ክፍሎች የተከፈሉ ናቸው። እነሱም፡- የምግብና ምግብ ነክ ያልሆኑ መመዘኛ ኢንዱስትሪዎች ሲሆን ምግብ ነክ ያልሆኑ መመዘኛ ኢንዱስትሪ እንደገና በ10 ንዑስ ክፍሎች ይከፈላል። እነዚህም መጠጥ፣ ሲጃራና ትምባሆ፣ ልብስና መጫሚያ፣ የቤት ኪራይ፣ የቤት መሥሪያ ዕቃዎች፣ ወሃና ኢነርጂ፣ የቤት ዕቃዎች፣ የቤት ማስገጫዎች፣ የቤት ቁሳቁስና የቤት ሠራተኛ ደመወዝ፣ ሕክምና፣ መጓጓዣና መገናኛ፣ መዝናኛና ትምህርት፣ የግል ንጽህናና የግል ቋሚ ዕቃዎች እንዲሁም ሌሎች ዕቃዎችና አገልግሎቶች ሲሆኑ የሁሉም ክፍሎች አጠቃላይ ወጤት የሚሆነው ደግሞ የጠቅላላ ዋጋዎች መመዘኛ ኢንዱስትሪ ነው።

በሁሉም ክልሎች የጠቅላላ ዋጋ መመዘኛ ኢንዱስትሪ ስሌት አብዛኛውን የመቶኛ ወጪ ድርሻ የሚይዘው የምግብ መመዘኛ ኢንዱስትሪ ሲሆን በሁሉም የምግብ ዋጋ መመዘኛ ኢንዱስትሪ ዋና ዋና ክፍሎች እህል፣ ጥራጥሬ፣ ዳቦና ሌሎች የተዘጋጁ ምግቦች፣ ሥጋ፣ ወተት፣ ዐይብና ዕንቁላል፣ ዘይትና ቅባቶች፣ አትክልትና ፍራፍሬ፣ ቅመማ ቅመም፣ ድንችና ሌሎች ሥራሥሮች፣ ያልተቆላ ቡናና ሻይ ቅጠል፣ ሌሎች ምግቦች፣ የማስፈጫ አገልግሎትና ከቤት ወጪ የተወሰዱ ምግቦች ናቸው።

ለዋጋ ኢንዱስትሪ የተመረጡት ዕቃዎችና አገልግሎቶች የዋጋ መረጃ የሚሰበሰበው በየዜን/ በየልዩ ወረዳ በናሙና በተመረጡ ወካይ ከተሞች ውስጥ ባሉ የገበያ ቦታዎች ነው። በመሆኑም ከእያንዳንዱ ዞን ሁለት ከተሞች (የገበያ ቦታዎች) የተመረጡ ሲሆን እንደዚሁም በእያንዳንዱ ልዩ ወረዳ አንድ ከተማ (የገበያ ቦታ) በጥናቱ እንዲካተት ተደርጓል።

በእነዚህ ከተሞች ውስጥ ተመድበው ለሚሰሩ መረጃ ሰብሳቢዎች በየበጀት ዓመቱ መጨረሻ በመረጃ አሰባሰብ ዘዴው ላይ ስልጠና የሚሰጥ ሲሆን ለአሰባሰቡ የሚረዱ የመስክ መገልገያ መሣሪያዎች (ሚዛን፣ ሜተር ... ወዘተ) ይሰጣቸዋል። እነዚህ መሣሪያዎችን በመጠቀም በየወሩ የዋጋ መረጃዎችን ከነጋዴዎች ይሰበስባሉ። አንዳንድ ጊዜም አንድ በላተኛ ወይም ገዢ ከነጋዴ ሲገዛ ቢገኝና ለሥራው ተባባሪነቱን ካሳየ መረጃው ከርሱም ይሰበስባል። የችርቻሮ ዋጋ መረጃ የሚሰበሰበው እንደ አወሮፓውያን ዘመን አቆጣጠር ወሩ በገባ ከ1ኛው ቀን አንስቶ አስከ 15ኛው ቀን ነው። የክልል ኢንዱስትሪን ለማስላት ለኢንዱስትሪ ለተመረጡት ዕቃዎችና አገልግሎቶች አማካይ የችርቻሮ ዋጋቸውን የጂኦሜትሪክ ሚን ዘዴ ጥቅም ላይ ወሎአል። የኢንዱስትሪ ሪፖርቱም በየወሩ ለተጠቃሚዎች በዚህ መልክ ይቀርባል።

የአገር አቀፍ የችርቻሮ ዋጋ መመዘኛ ኢንዱስትሪ የሚሰላው እያንዳንዱ ክልል ለአገር አቀፍ የቤተሰብ ወጪ ያለውን የመቶኛ ድርሻ መሠረት በማድረግ ነው። በመሆኑም ለአገር አቀፍ ኢንዱስትሪ ስሌት ከ95 በመቶ በላይ አስተዋጽኦ የሚያደርጉ ክልሎች በቅደም ተከተል ኦሮሚያ፣ አማራ፣ የደቡብ ብሔር ብሔረሰቦችና ሕዝቦች፣ አዲስ አበባና ትግራይ ሲሆኑ የተቀሩት ክልሎች በየወሩ ለሚታየው አገር አቀፍ የችርቻሮ ዋጋ መመዘኛ ኢንዱስትሪ ስሌት የሚኖራቸው አስተዋጽኦ ከአምስት በመቶ የማይበልጥ ነው።

ለችርቻሮ ዋጋ ጥናት በአጠቃላይ 119 የገበያ ቦታዎች የተመረጡ ሲሆን በእያንዳንዱ ክልል የተመረጡ የናሙና ገበያዎች ብዛትና በየኢንዱስትሪዎቻቸው ማዕቀፍ የተካተቱ ዕቃዎች/አገልግሎቶች ብዛት ከዚህ በታች ቀርቦአል።

ሠንጠረዥ ሀ: በጥናቱ የተሸፈኑ ገበያዎችና በኢንዱስትሪ ማዕቀፍ የተካተቱ ዕቃዎች/አገልግሎቶች ብዛት በክልል

Table A: Number of Markets Covered and Basket of Commodities by Region

ተራ ቁጥር	ክልል	የገበያ ቦታዎች ብዛት	የተካተቱ አገልግሎቶች		Region
			ታህሳስ 1993=100	ታህሳስ 1999=100	
1	ትግራይ	8	114	143	Tigray
2	አፋር	4	85	153	Afar
3	አማራ	20	118	144	Amhara
4	ኦሮሚያ	24	127	161	Oromia
5	ሶማሌ	6	85	122	Somalie
6	ቤኒሻንጉል ጉምዝ	6	111	142	Benishangul-Gumuz
7	ደ.ብ.ብ.ሀ	31	130	152	SNNP
8	ጋምቤላ	3	105	103	Gambela
9	ሐረሪ	2	102	158	Harari
10	አዲስ አበባ ከተማ	12	175	193	Addis Ababa City Administration
11	ድራዳዋ አስተዳደር	3	121	150	Dire Dawa Administrative Council
	ድምር	119			Total
Sr.No.		Number of Markets	Basket of Commodities		

ለጠቋሚ አሀዙ ክንዋኔ ዋናው ነገር በጠቋሚ አሀዙ ማዕቀፍ ተካትተው በዋናነት የሚያገለግሉ ዕቃዎችና አገልግሎቶች የመምረጥ ጉዳይ ነው። ጠቋሚ አሀዞች የሚመሠረቱት በአጠቃላይ በናሙና በሚመረጡ ዕቃዎች ላይ ሲሆን በጠቋሚ አሀዙ ማዕቀፍ ውስጥ መካተት የሚገባው ዕቃ መወሰን ግን ሁሉም ቀላል የሚባል ተግባር አይደለም። የተለያዩ የአመራረጥ ዘዴ መጠቀም ቢቻልም የሚመረጡት ዕቃዎች ለረጅም ጊዜ የሚኖራቸው ተፈላጊነት፣ በአስተማማኝ ሁኔታ በገበያ ላይ የመገኘታቸው ጉዳይ፣ ሌሎችን ዕቃዎች የመወከል ብቃትና ከሌሎች ምርቶች ጋር ያላቸው ተወዳዳሪነት መሠረት ያደረገ እንዲሆን ይፈለጋል። በአጠቃላይ የተመረጡት ዕቃዎች በበቂ መጠን የመገኘታቸው ሁኔታ፣ በየወቅቱ ተወዳዳሪነታቸውና ዕቃዎችና አገልግሎቶች ምድቡን የመወከላቸው ብቃትን ማረጋገጥ ያስፈልጋል።

ታህሳስ 1999 ዓ.ም. መሠረት ያደረገው የሽማግሌት ዋጋ መመዘኛ ኢንዱስትሪ አይነቶችና እያንዳንዱ ዋና ክፍል ያለው የወጪ ድርሻ በገፅ 6 ላይ ይታያል። ይህ ሠንጠረዥ እንደሚያሳየው የምግብ የመቶኛ የወጪ ድርሻ ታህሳስ 1993 ዓ.ም. ከነበረው 60 በመቶ ወደ 57 በመቶ ቀንሷል። በአንጻሩ ደግሞ ምግብ ነክ ያልሆነ መመዘኛ ኢንዱስትሪ ታህሳስ 1993 ዓ.ም. ከነበረው 40 በመቶ የወጪ ድርሻ ወደ 43 በመቶ ከፍ ብሏል። ባጠቃላይ ሲታይ በሁሉም ክልሎች ኢንዱስትሪ ላይ የምግብ የወጪ ድርሻ የማይናቅ ቅናሽ ያሳየ ሲሆን ምግብ ነክ ያልሆኑ የወጪ ድርሻ መጠነኛ እድገት አሳይታል።

Introduction

The Consumer Price Index (CPI) measures the average change in the price paid by consumers for a fixed market basket of goods and services. It is usually based on household expenditure weights of the goods and services in the basket and their current market prices. The twelve CPI's (i.e., the CPI's of the 11 Regions and the CPI at Country Level) presented in this report are based on the results of the Household Income, Consumption and Expenditure Survey (HICES) conducted by the Central Statistical Agency in 2004/2005 from which expenditure weights are derived for major household goods and services of that period and adjusted using the December 2006 retail prices of the goods and services as a base period.

The December 2006 based CPI updates the previous CPI series (i.e. December 2000 based) and the newly selected baskets are more diversified and the weights are more accurate. It also showed various improvements and incorporates non-food index as an independent group. The new series is constructed for country as a whole and Regional States including Dire Dawa and the Addis Ababa City Administration. However, similar indices had been utilized at Addis Ababa Level since 1963 and at Country, Urban and Rural Levels since 1995/96 and in Country and Regional level since 2000.

All the twelve general indices are divided into two major groups that is food and non-food index. The non-food index has ten major groups each, namely: Beverages; Cigarettes and Tobacco; Clothing and Footwear; House Rent, Construction Materials, Water, and Fuel and Power; Furniture, Furnishing, Household Equipment and Operation; Medical Care and Health; Transport and Communication; Recreation, Entertainment and Education; Personal Care and Effects; and Miscellaneous Goods and Services. On the other hand, the Food Index has 13 sub-groups. These are: Cereals; Pulses; Bread and Other Prepared Food; Meat; Milk, Cheese and Eggs; Vegetables and

Fruits; Oil and Fats Spices; Potatoes, Other Tubers and Stems; Coffee Beans (whole) and Tea Leaves; Other Food Items; Milling Charges; and Food taken Away from Home. Furthermore, the new CPI based on December 2006 includes more detailed #Housing, Construction materials, Water and Fuel and Power; components.

For the construction of the current consumer price indices, up to date data on retail prices are collected in the purposely selected sample market places located in representative urban centers in each zone/special weredas of the country. Hence, a total of 119 market places were selected for the retail price survey. In each market place an enumerator is assigned to undertaking the data collection activities. The price data is collected from the 1st day through 15th days of European Calendar month under consideration. To calculate the monthly regional consumer price indices, geometric means of prices of the specific regions are used. The distribution of the market place of each region and items included in the basket of commodities are given on Table A on page 2.

An important factor in constructing a Consumer Price Index is to select the representative basket of goods and services. Including all consumption items into the market basket of goods and services is both cumbersome and unnecessarily costly in term of data collection and processing. Furthermore, it doesn't make sense to include an insignificant weight into an index basket which could not move the price relative up or downwards compared to the general market trend. As a result, basket of goods and services included in the regional baskets are determined by expenditure cut-off point. The total numbers of items included in the regional basket in the December 2006 based indices are given in Table A on page 2.

Country level CPI aggregates the regional group indices and the contributions of the five relatively big regions in terms of the magnitude of the expenditure account for more than 95 percent. These regions are Oromiya, Amhara, SNNP, Addis Ababa and Tigray. On the other hand, the contributions of the remaining regions to the

Country Level Consumer Price Index is about five percent.

According to the weights for food and non-food groups in Table B below, the December 2006 based CPI is about 57 percent of household expenditure spent on the food component, which declined by 3 percentage points as compared to the December 2000 based CPI. On the other hand, the expenditure on non-food components increased from 40 percent to 43 percent. This indicates that the economic situation in the country is going in the right direction as postulated by economic theory. Similarly, in this period larger regions resulted in a substantial decrease in the average weights for food. despite the increased food taken out of home. It was offset mainly by an increase in housing, construction materials, water and fuel and power, furnishing and transport and communication.

Table B: Major groups in the 2000 and 2006 based CPI and their weights at Country Level

No.	Major Group	Weights	
		2000 based CPI	2006 based CPI
1	Food	0.6008	0.5701
2	Non-Food	0.3992	0.4299
3	Beverages	0.0201	0.0202
4	Cigarettes and Tobacco	0.0051	0.0048
5	Clothing and Footwear	0.0926	0.0832
6	House Rent, Construction Materials, Water and Fuel and Power	0.1544	0.2056
7	Furniture, Furnishing, Household Equipment and Operation	0.0494	0.0375
8	Medical Care and Health	0.0120	0.0111
9	Transport and Communication	0.0199	0.0249
10	Recreation, Entertainment and Education	0.0101	0.0109
11	Personal Care and Effects	0.0092	0.0083
12	Miscellaneous Goods	0.0264	0.0234
	Total	1.000	1.000

የታህሳስ ወር 2000 ዓ.ም. የዋጋ ግሽበት ሁኔታ

December 2007 Inflation Rate

ከሠንጠረዥ #ሐ; መረዳት እንደሚቻለው በታህሳስ ወር 2000 ዓ.ም. የተመዘገበው አገራዊ አጠቃላይ የዋጋ ግሽበት 17.2 በመቶ ሲሆን ይህ አሀዝ በታህሳስ 1999 በጀት ዓመት ከታየው 12.3 በመቶ አጠቃላይ የዋጋ ግሽበት ጋር ሲነፃፀር በ4.9 ጭማሪ አሳይቷል። በተመሳሳይ ሁኔታ በታህሳስ ወር 2000 ዓ.ም. የተመዘገበው አገራዊ የምግብ የዋጋ ግሽበት 22.0 በመቶ ሲሆን አገራዊ ምግብ ነክ ያልሆኑ የዋጋ ግሽበት ደግሞ 11.0 በመቶ ሆኗል።

በታህሳስ ወር 2000 ዓ.ም. የተመዘገበው 22.0 በመቶ የምግብ የዋጋ ግሽበት ከታህሳስ 1999 በጀት ዓመት ከታየው 13.6 ጋር ሲነፃፀር 8.4 ጭማሪ አሳይቷል። ለዚህም አገራዊ የምግብ የዋጋ ግሽበት መጨመር ምክንያት የሆኑት የተለያዩ የምግብ ክፍሎች ማለትም በእህል፣ በጥራጥሬ፣ በሥጋ፣ በዘይትና ቅባቶች፣ በአይብና ዕንቁላል፣ አትክልትና ፍራፍሬ፣ ቅመማ ቅመም (በተለይም በርበሬና ሚጥሚጣ) እና ከቤት ወጪ የተወሰዱ ምግቦች ዋጋ ላይ ከፍተኛ ጭማሪ በመከሰቱ ነው።

ሠንጠረዥ #መ; ላይ ለማየት እንደሚቻለው ያልተጠበቀ በጣም ከፍተኛ የዋጋ ጭማሪ የታየው በርበሬ ዋጋ ላይ ስለሆነ፣ የርበሬ ዋጋ በታህሳሥ 1999 ዓ.ም. በነበረበት ቢሆን ኖሮ በታህሳሥ ወር 2000 ዓ.ም. አጠቃላይ የዋጋ ግሽበት 14.2፣ የምግብ ደግሞ 16.6 ይሆን እንደነበር ለመረዳት ይቻላል።

As it indicated in the Table 'C' below the country level overall inflation rate (annual change based on 12 months Moving Average) stood at 17.2 percent in December 2007. This rate is 4.9 percentage points higher than the corresponding annual average rate of 12.3 percent at December 2006. Similarly, the country level food inflation rate stood at 22.0 percent and the country level Non-food inflation rate stood at 11.0 percent at December 2007.

The 22 percent Country level food inflation rate in December 2007 is 8.4 percentage points higher than that of 13.6 percent inflation rate at December 2006. This higher increase in food inflation rate was due to the increase in price of the food components like cereals, pulses, Meat, oil and fat, milk and egg, vegetable and fruits, spices (specially pepper whole and chilies) and food taken away from home.

However, as shown in Table D, if the unexpectedly very high price increases in Pepper whole and Chilies were constant to the base period of December 2006, over all and food inflation rate could have been 14.2 percent and 16.6 percent, respectively in December 2007.

ሠንጠረዥ ሐ: በአገር አቀፍ ደረጃ የዋጋ ግሽበት ሁኔታ

Table C: The Country Level General Inflation Rate

በጀት ዓመት (ወር)	የዋጋ ግሽበት ሁኔታ			Budget Year and months
	አጠቃላይ የዋጋ ግሽበት	የምግብ የዋጋ ግሽበት	የምግብ ነክ ያልሆኑ የዋጋ ግሽበት	
የ1999 በጀት ዓመት በወራት				The 2006/7 Budget Year in Months
ሐምሌ 1998	10.7	12.9	7.5	July 2006
ነሐሴ 1998	10.9	13.0	7.9	August 2006
መስከረም 1999	10.9	12.7	8.4	September 2006
ጥቅምት 1999	11.3	13.0	8.9	October 2006
ህዳር 1999	11.7	13.3	9.5	November 2006
ታህሳስ 1999	12.3	13.6	10.4	December 2006
ጥር 1999	12.9	14.0	11.3	January 2007
የካቲት 1999	13.5	14.5	12.0	February 2007
መጋቢት 1999	14.2	15.3	12.7	March 2007
ሚያዝያ 1999	15.2	16.4	13.4	April 2007
ግንቦት 1999	15.5	16.9	13.5	May 2007
ሰኔ 1999	15.8	17.5	13.5	June 2007
የ2000 በጀት ዓመት በወራት				The 2007/8 Budget Year in Months
ሐምሌ 1999	15.9	17.9	13.2	July 2007
ነሐሴ 1999	16.1	18.6	12.8	August 2007
መስከረም 2000	16.5	19.7	12.3	September 2007
ጥቅምት 2000	16.9	20.6	11.9	October 2007
ኅዳር 2000	17.1	21.3	11.5	November 2007
ታህሳስ 2000	17.2	22.0	11.0	December 2007
Budget Year	Inflation Rate			
	Overall Inflation rate	Food Inflation rate	Non-food Inflation rate	

Revised (From January 2007 – November 2007)

ሠንጠረዥ መ: በአገር አቀፍ ደረጃ የዋጋ ግሽበት ሁኔታ የበርበሬ ዋጋ በታህሳስ 1999 ዓ.ም በነበረበት ቢሆን

Table D: The Country Level General Inflation Rate Keeping the Spices prices constant to the base price

በጀት ዓመት (ወር)	የዋጋ ግሽበት ሁኔታ			Budget Year and months
	አጠቃላይ የዋጋ ግሽበት	የምግብ የዋጋ ግሽበት	የምግብ ነክ ያልሆኑ የዋጋ ግሽበት	
የ1999 በጀት ዓመት በወራት				The 2006/7 Budget Year in Months
ሐምሌ 1998	10.7	12.9	7.5	July 2006
ነሐሴ 1998	10.9	13.0	7.9	August 2006
መስከረም 1999	10.9	12.7	8.4	September 2006
ጥቅምት 1999	11.3	13.0	8.9	October 2006
ህዳር 1999	11.7	13.3	9.5	November 2006
ታህሳስ 1999	12.3	13.6	10.4	December 2006
ጥር 1999	12.9	14.0	11.3	January 2007
የካቲት 1999	13.4	14.4	12.0	February 2007
መጋቢት 1999	14.0	14.9	12.7	March 2007
ሚያዝያ 1999	14.8	15.8	13.4	April 2007
ግንቦት 1999	14.9	15.8	13.5	May 2007
ሰኔ 1999	15.0	16.1	13.5	June 2007
የ2000 በጀት ዓመት በወራት				The 2007/8 Budget Year in Months
ሐምሌ 1999	14.9	16.0	13.2	July 2007
ነሐሴ 1999	14.7	16.0	12.8	August 2007
መስከረም 2000	14.6	16.2	12.3	September 2007
ጥቅምት 2000	14.5	16.3	11.9	October 2007
ኅዳር 2000	14.4	16.5	11.5	November 2007
ታህሳስ 2000	14.2	16.6	11.0	December 2007
Budget Year	Inflation Rate			
	Overall Inflation rate	Food Inflation rate	Non-food Inflation rate	

Revised (From January 2007 – November 2007)

የዘንድሮውና የአምናው ተመሳሳይ ወሮች የችርቻሮ ዋጋ መመዘኛ ጠቋሚ አሀዝ ንፅፅር በአገር አቀፍ ደረጃ

Comparison of CPI Movements, Current vs Last year's Similar Months at Country Level

አሠንጠርዥ 1(ሀ) መረዳት እንደሚቻለው የታህሳስ ወር 2000 ዓ.ም የአገር አቀፍ ጠቅላላ የችርቻሮ ዋጋ ኢንዱክስ ከታህሳስ ወር 1999 ዓ.ም ጠቅላላ ኢንዱክስ ጋር ሲነፃፀር በ18.4 ከመቶ ዕድገት አሳይቶአል። ለዚህ ዕድገት አስተዋጽኦ ያደረጉት ምግብ በ25.7 ከመቶ፣ መጠጥ በ8.1 ከመቶ፣ ሲጋራና ትምባሆ 1.1 ከመቶ፣ ልብስና መጫሚያ በ14.5 ከመቶ፣ የቤት ኪራይ፣ የቤት መሥሪያ ዕቃዎች፣ ዉሃና ኢነርጂ በ6.7 ከመቶ፣ የቤት ዕቃዎች፣ ቤት ማስገጫዎች፣ የቤት ቁሳቁስና የቤት ሠራተኛ ደመወዝ በ 20.1 ከመቶ፣ ህክምና 9.7 ከመቶ፣ ትራንስፖርትና መገናኛ በ0.2 ከመቶ፣ መዝናኛና ትምህርት በ4.8 ከመቶ፣ የግል ንጽህናና የግል ቋሚ ዕቃዎች በ7.0 ከመቶ እና ሌሎች ዕቃዎች በ2.5 ከመቶ በየኢንዱክሶቻቸው ላይ ጭማሪ በማሳየታቸው ነው።

The December 2007 Country Level Consumer Price Index has increased by 18.4 percent as compared to December 2006 (Table 1(a)). This increase was attributed to the rise in the indices of its components; namely: Food by 25.7 percent, Beverages by 8.1 percent, Cigarettes and Tobacco by 1.1 percent, Clothing and Footwear by 14.5 percent, House Rent, Construction Materials, Water and Fuel and Power by 6.7 percent, Furniture, Furnishings, Household Equipment and Operation by 20.1 percent, Medical Care and Health by 9.7 percent, Transport and Communication by 0.2 percent, Recreation, Entertainment and Education by 4.8, percent, Personal Care Effects by 7.0 percent and Miscellaneous Goods by 2.5 percent.

ሠንጠረዥ 1(ለ) እንደሚያሳየው ለጠቅላላ ምግብ ኢንዱክስ 25.7 ከመቶ መጨመር ምክንያት የሆኑት የምግብ ክፍሎች ማለትም እህል በ19.9 ከመቶ፣ ጥራጥሬ በ16.0 ከመቶ፣ ዳቦና ሌሎች የተዘጋጁ ምግቦች በ26.3 ከመቶ፣ ሥጋ በ15.1 ከመቶ፣ ወተት፣ አይብና ዕንቁላል በ10.7 ከመቶ፣ በዘይትና ቅባቶች ኢንዱክስ ላይ በ45.0 ከመቶ፣ አትክልትና ፍራፍሬ በ38.3 ከመቶ፣ ቅመማ ቅመም በ194.3 ከመቶ ድንችና ሌሎች ስራ ስሮች በ 14.1 ከመቶ፣ ያልተቆላ ቡናና ሻይ ቅጠል በ21.8 ከመቶ፣ የማስፈጫ አገልግሎት በ10.8 ከመቶ፣ ከቤት ዉጪ የተወሰዱ ምግቦች በ14.7 ከመቶ ዕድገት በየኢንዱክሶቻቸው ላይ በማሳየታቸው ነው። በሌላ በኩል ሌሎች ምግቦች በ4.6 ከመቶ ቅናሽ በኢንዱክሱ ላይ አሳይቷል።

The 25.7 percent increase in the Food index was observed due to rise in the indices of the components of Food index (Table 1(b)) namely: Cereals by (19.9 percent), Pulses (16.0 percent), Bread and Other Prepared Food (26.3 percent), Meat (15.1 percent), Milk, Cheese and Eggs (10.7 percent), oils and Fats by (45.0 percent), Vegetables and fruits (38.3 percent), Spices (194.3 percent), Potatoes, Other Tubers and Stems (14.1 percent), Coffee and Tea Leaves (21.8 percent), Milling Charge by (10.8 percent), and Food Taken Away from Home (14.7 percent). On the other hand, decline was observed in the index of other Food Items by 4.6 percent.

**የዘንድሮውና የአምናው ዓመት የችርቻሮ ዋጋ መመዘኛ ጠቋሚ አሀዝ
ንዕስር በአገር አቀፍ ደረጃ**

Comparison of CPI Movements, Current vs Last year at Country Level

ከሠንጠረዥ 1(ሀ) መረዳት እንደሚቻለው የ1999 በጀት ዓመት የአገር አቀፍ ጠቅላላ የችርቻሮ ዋጋ መመዘኛ ኢንዱክስ ከ1998 በጀት ዓመት ጠቅላላ ኢንዱክስ ጋር ሲነፃፀር በ17.8 ከመቶ ዕድገት አሳይቶአል። ለዚህ ዕድገት አስተዋጽኦ ያደረጉት ምግብ በ18.9 ከመቶ፣ መጠጥ በ11.0 ከመቶ፣ ሲጋራና ትምህርት በ7.7 ከመቶ፣ ልብሰና መጫሚያ በ8.5 ከመቶ፣ የቤት ኪራይ፣ የቤት መሥሪያ ዕቃዎች፣ ወሃና ኢነርጂ በ21.4 ከመቶ፣ የቤት ዕቃዎች፣ ቤት ማስገጫዎች፣ የቤት ቁሳቁስና የቤት ሠራተኛ ደመወዝ በ13.6 ከመቶ፣ ህክምና በ5.3 ከመቶ፣ ትራንስፖርትና መገናኛ በ21.4 ከመቶ፣ መዝናኛና ትምህርት በ7.1 ከመቶ እና የግል ንጽህናና የግል ቋሚ ዕቃዎች በ16.8 ከመቶ በየኢንዱስትሪው ላይ ጭማሪ በማሳየታቸው ነው። ሆኖም በሌሎች ዕቃዎች ኢንዱክስ ላይ ምንም ለውጥ አልታየም።

ሠንጠረዥ 1(ለ) እንደምያሳየው ለጠቅላላ ምግብ ኢንዱክስ በ18.9 ከመቶ መጨመር ምክንያት የሆኑት የምግብ ክፍሎች ማለትም እህል በ16.8 ከመቶ፣ ጥራጥራ በ27.2 ከመቶ፣ ዳቦና ሌሎች የተዘጋጁ ምግቦች በ20.4 ከመቶ፣ ሥጋ በ25.4 ከመቶ፣ ወተት አይብና ዕንቁላል በ15.9 ከመቶ፣ ዘይትና ቅባቶች በ15.7 ከመቶ፣ አትክልትና ፍራፍሬ በ29.9 ከመቶ፣ ቅመማ ቅመም በ25.7 ከመቶ፣ ድንችና ሌሎች ስራስሮች በ16.1 ከመቶ፣ ያልተቆላ ቡናና ሻይ ቅጠል በ13.5 ከመቶ፣ ሌሎች ምግቦች በ2.4 ከመቶ የማስፈጫ አገልግሎት በ10.5 ከመቶ እና ከቤት ወጪ የተወሰዱ ምግቦች በ20.5 ከመቶ ዕድገት በየኢንዱስትሪው ላይ በማሳየታቸው ነው።

to 2005/2006 Fiscal Year (Table 1(a)). This increase was attributed to the rise in the indices of its components; namely: Food by 18.9 percent, Beverages by 11.0 percent, Cigarettes and Tobacco by 2.7 percent, Clothing and Foot wear by 8.5 percent, House Rent, Construction Materials, Water and Fuel and Power by 21.4 percent, Furniture, Furnishings, Household Equipment and Operation by 13.6 percent, Medical Care and Health by 5.3 percent, Recreation, Entertainment and Education by 7.1 percent, Transport and Communication by 21.4 percent, and Personal Care and Effects by 16.8 percent. However, no change was observed in the index of Miscellaneous Goods.

Table 1(b) reveals that the 18.9 percent increase in the Food index was observed due to a rise in the indices of the components of Food index namely: Cereals (16.8 percent), Pulses (27.2 percent), Bread and Other Prepared Food (20.4 percent), Meat (25.4 percent), Milk, Cheese and Eggs (15.9 percent), Oils and Fats (15.7 percent), Vegetables and Fruits (29.9 percent), Spices (25.7 percent), Potatoes, Other Tubers and Stems (16.1 percent), Coffee and Tea Leaves by (13.5 percent), Other Food Items (2.4 percent), Milling Charge (10.5 percent).and Food Taken Away from Home (20.5 percent).

The 2006/2007 Fiscal Year Country Level Consumer Price Index has increased by 17.8 percent as compared

**የዘንድሮውና የአምናው ተመሳሳይ ወሮች
የችርቻሮ ዋጋ መመዘኛ ጠቋሚ አሀዝ ንፅፅር በአገር አቀፍና በክልሎች ደረጃ**
Comparison of CPI Movements, Current vs Last year at Country and
Regional Levels

ከሠንጠረዥ 2(ሀ) መረዳት እንደሚቻለው የታህሳስ ወር 2000 ዓ.ም የአገር አቀፍ ጠቅላላ የችርቻሮ ዋጋ መመዘኛ ኢንዱክስ ከታህሳስ ወር 1999 ዓ.ም ጠቅላላ ኢንዱክስ ጋር ሲነፃፀር በ 18.4 ከመቶ ዕድገት አሳይቶአል። ለዚህ ዕድገት አስተዋጽኦ ያደረጉት አዲስ አበባ 15.3 ከመቶ፣ አፋር 18.5 ከመቶ፣ አማራ 21.4 ከመቶ፣ ቤኔሻንጉል ጉሙዝ 31.3 ከመቶ፣ ድሬዳዋ 19.0 ከመቶ፣ ጋምቤላ 18.2 ከመቶ፣ ሐረሪ 10.0 ከመቶ፣ ኦሮሚያ 19.2 ከመቶ፣ ደቡብ ብሄሮች፣ ብሄረሰቦችና ሕዝቦች 15.3 ከመቶ፣ ሶማሌ 9.4 ከመቶ እና ትግራይ 20.7 ከመቶ በጠቅላላ ኢንዱክሶቻቸው ላይ ጭማሪ በማሳየታቸው ነው።

Table 2(a) also displays that the December 2007 Country level General Consumer Price Index has increased by 18.4 percent as compared to December 2006. This increase was attributed to the rise in the indices of its constituent regions; namely: Addis Ababa 15.3 percent, Afar 18.5 percent, Amhara 21.4 percent, Benishangul Gumuz 31.3 percent, Dire Dawa 19.0 percent, Gambela 18.2 percent, Harari 10.0 percent, Oromia 19.2 percent, SNNP 15.3 percent, Somali 9.4 percent and Tigray 20.7 percent.

ሠንጠረዥ 2(ለ) እንደሚያሳየው አገር አቀፍ ጠቅላላ የምግብ ዋጋ መመዘኛ ኢንዱክስ 25.7 ከመቶ መጨመር ምክንያት የሆኑት አዲስ አበባ 23.2 ከመቶ፣ አፋር 27.8 ከመቶ፣ አማራ 30.8 ከመቶ፣ ቤኔሻንጉል ጉሙዝ 39.1 ከመቶ፣ ድሬዳዋ 23.3 ከመቶ፣ ጋምቤላ 26.6 ከመቶ፣ ሐረሪ 16.4 ከመቶ፣ ኦሮሚያ 25.9 ከመቶ፣ ደቡብ ብሄሮች፣ ብሄረሰቦችና ሕዝቦች 17.0 ከመቶ፣ ሶማሌ 11.5 ከመቶ እና ትግራይ 30.8 ከመቶ በጠቅላላ ኢንዱክሶቻቸው ላይ ጭማሪ በማሳየታቸው ነው።

Table 2(b) reveals that the 25.7 percent increase in the country level Food index was observed due to a rise in the indices of the regions namely: Addis Ababa 23.2 percent, Afar 27.8 percent, Amhara 30.8 percent, Benishangul Gumuz 39.1 percent, Dire Dawa 23.3 percent, Gambela 26.6 percent, Harari 16.4 percent, Oromia 25.9 percent, SNNP 17.0 percent, Somali 11.5 percent and Tigray 30.8 percent.

የዘንድሮውና የአምናው ዓመት የችርቻሮ ዋጋ መመዘኛ ጠቋሚ አሀዝ ንዕስር በአገር አቀፍና በክልሎች ደረጃ

Comparison of CPI Movements, Current vs Last year at Country and Regional Levels

ከሠንጠረዥ 2(ሀ) መረዳት እንደሚቻለው የ1999 በጀት ዓመት የአገር አቀፍ ጠቅላላ የችርቻሮ ዋጋ መመዘኛ ኢንዱክስ ከ1998 በጀት ዓመት ጠቅላላ ኢንዱክስ ጋር ሲነፃፀር በ17.8 ከመቶ ዕድገት አሳይቶአል። ለዚህ ዕድገት አስተዋጽኦ ያደረጉት አዲስ አበባ በ38.0 ከመቶ፣ አፋር በ32.0 ከመቶ፣ አማራ በ12.4 ከመቶ፣ ቤኔሻንጉል ጉሙዝ በ10.4 ከመቶ፣ ድሬዳዋ በ34.5 ከመቶ፣ ጋምቤላ በ13.3 ከመቶ፣ ሐረሪ በ25.4 ከመቶ፣ ኦሮሚያ በ14.3 ከመቶ ደቡብ ብሄሮች፣ ብሄረሰቦችና ሕዝቦች በ24.1 ከመቶ፣ ሶማሌ በ23.0 ከመቶ እና ትግራይ በ22.2 ከመቶ በጠቅላላ ኢንዱክሶቻቸው ላይ ጭማሪ በማሳየታቸው ነው።

Table 2(a) also displays that the 2006/2007 Fiscal Year Country level General Consumer Price Index has increased by 17.8 percent as compared to 2005/2006 Fiscal Year. This increase was attributed to the rise in the indices of its constituent regions; namely: Addis Ababa 38.0 percent, Afar 32.0 percent, Amhara 12.4 percent, Benishangul Gumuz 10.4 percent, Dire Dawa 34.5 percent, Gambela 13.3 percent, Harari 25.4 percent, Oromia 14.3 percent, SNNP 24.1 percent, Somali 23.0 percent and Tigray 22.2 percent.

ሠንጠረዥ 2(ለ) እንደሚያሳየው አገር አቀፍ ጠቅላላ የምግብ ዋጋ መመዘኛ ኢንዱክስ በ18.9 ከመቶ መጨመር ምክንያት የሆኑት አዲስ አበባ በ25.2 ከመቶ፣ አፋር በ19.2 ከመቶ፣ አማራ በ17.0 ከመቶ፣ ቤኔሻንጉል ጉሙዝ በ12.7 ከመቶ፣ ድሬዳዋ በ14.9 ከመቶ፣ ጋምቤላ በ15.8 ከመቶ፣ ሐረሪ በ17.0 ከመቶ፣ ኦሮሚያ በ21.3 ከመቶ፣ ደቡብ ብሄሮች፣ ብሄረሰቦችና ሕዝቦች በ20.7 ከመቶ፣ ሶማሌ 8.5 ከመቶ እና ትግራይ በ10.2 ከመቶ በጠቅላላ ኢንዱክሶቻቸው ላይ ጭማሪ በማሳየታቸው ነው።

Table 2 (b) reveals that the 18.9 percent increase in the country level Food index was observed due to a rise in the indices of the regions namely: Addis Ababa (25.2 percent), Afar (19.9 percent), Amhara (17.0 percent), Benishangul-Gumuz (12.7 percent), Dire Dawa (14.9 percent), and Gambela (15.8 percent), Harari (17.0 percent), Oromia (21.3 percent), SNNP (20.7 percent), Somali (8.5 percent) and Tigray (10.2 percent).

ሠንጠረዥ 1ሀ:- ጠቅላላ የ ሽንገሎች የጋ መመዘኛ ኢንዱስትሪ ቢሮ የተካተቱ ክፍሎች በአገር አቀፍ ደረጃ
 ታህሳስ 1999 = 100

Table 1a: General Consumer Price Index and Its Components at Country Level
 December 2006 = 100

ወርና ዓመት	ጠቅላላ ኢንዱስትሪ	ጠቅላላ የምግብ ኢንዱስትሪ	ጠቅላላ የምግብ ክፍል ኢንዱስትሪ	Non-food Consumer Price Index Components											Month and Year
				መጠጥ	ቢዳራና ትምህርት	ልብና መጫጫያ	የቤት ኪራይ፣ የቤት መሥሪያ ሰዎች፣ውሃ፣ ነጻጅናሃይል	የቤት ሰዎች የቤት ግንቢያዎች የቤት ቁሳቁስና የቤት ሠራተኛ ደመወዝ	ሕክምና	ትራንስፖርትና ጠገናኛ	መዝናኛና ትምህርት	የግል ንጽህናና የግል ቋጫ ሰዎች	ሌሎች ሰዎች		
	General Index	Food Total	Non-Food Total	Beverages	Cigarettes and Tobacco	Clothing and Footwear	House Rent, Construction Materials, Water, and Fuel and Power	Furniture, Furnishings, Household Equipment and Operation	Medical Care and Health	Transport and Communication	Recreation, Entertainment and Education	Personal Care and Effects	Miscellaneous Goods		
ታህሳስ 1999	100.0	100.0	100.0	100.0	100.0	100.0	100.0	100.0	100.0	100.0	100.0	100.0	100.0	100.0	December 2006
ጥር 1999	100.4	100.0	100.9	97.0	100.8	101.6	100.8	102.4	102.5	99.5	100.3	100.3	100.9	100.9	January 2007
የካቲት 1999	102.3	102.9	101.5	99.0	101.7	102.3	101.0	104.9	104.0	99.9	100.4	100.9	100.5	100.5	February "
መግቢት 1999	104.3	105.4	102.9	100.7	101.7	104.7	102.5	106.0	107.2	100.0	100.4	100.8	100.5	100.5	March "
ሚያዝያ 1999	105.8	107.7	103.3	103.3	101.1	106.0	102.1	107.6	107.2	100.4	100.7	100.9	100.9	100.9	April "
ግንቦት 1999	106.3	107.9	104.1	103.4	101.8	105.9	103.4	109.1	107.4	100.3	100.8	103.2	101.1	101.1	May "
ሰኔ 1999	107.4	109.5	104.5	104.6	101.5	106.3	103.7	109.7	107.1	101.1	100.8	102.3	101.6	101.6	June "
2000															2007/2008
ሐምሌ 1999	109.6	113.0	105.1	103.1	101.6	108.2	104.1	111.6	105.8	100.5	100.7	104.1	101.6	101.6	July "
ክሌሌ 1999	112.7	118.1	105.6	103.4	102.9	108.8	104.6	111.7	108.5	100.5	102.1	104.2	102.1	102.1	August "
መስከረም 2000	115.3	121.9	106.5	104.3	102.1	111.8	104.4	114.2	109.0	100.7	104.7	106.0	102.9	102.9	September "
ኅዳር 2000	117.1	124.4	107.5	104.4	101.6	112.4	105.9	115.8	108.8	100.5	105.6	107.1	103.2	103.2	October "
ጥቅምት 2000	117.2	123.8	108.5	106.0	101.7	114.0	106.6	118.6	108.9	101.1	105.4	105.7	103.4	103.4	November "
ታህሳስ 2000	118.4	125.7	108.8	108.1	101.1	114.5	106.7	120.1	109.7	100.2	104.8	107.0	102.5	102.5	December "

Revised from January 2007 - November 2007

ሠንጠረዥ 1A:- ጠቅላላ ምግብና የምግብ ክፍሎች የ ሽግግር ዋጋ መመዘኛ ኢንዱስትሪ በአገር አቀፍ ደረጃ
 ታህሳስ 1999 = 100

Table 1b: Consumer Price Index of Total Food and Its Components at Country Level
 December 2006 = 100

ወርና ዓመት	ጠቅላላ ምግብ Food Total	እህል Cereals	በቤት ውስጥ የተወሰዱ የምግብ ዓይነቶች FOOD TAKEN AT HOME											ከቤት ውጪ የተወሰዱ ምግቦች Food taken away from home	Month and Year		
			ጥራጥራ Pulses	ዳቦና ሌሎች የተዘጋጁ ምግቦች Bread and other Prepared Food	ሥጋ Meat	ወተት+ ዓይብና እንቁላል Milk, Cheese and Egg	ዘይትና ቅባቶች Oils and Fats	አትክልትና ፍራፍራ Vegetables and Fruits	ቅመግ ቅመም Spices	ደንችና ሌሎች ሥራሥሮች Potatoes, Other Tubers and Stems	ያልተቆላ ቤናና ሻይ ቅጠል Coffee (beans, whole) and Tea Leaves	ሌሎች ምግቦች Other Food Items	የግስፈጫ አገልግሎት Milling Charges				
ታህሳስ 1999	100.0	100.0	100.0	100.0	100.0	100.0	100.0	100.0	100.0	100.0	100.0	100.0	100.0	100.0	100.0	100.0	December 2006
ጥር 1999	100.0	98.2	100.3	103.1	100.8	100.2	103.0	101.3	106.1	100.3	99.9	100.2	102.6	100.3	100.3	100.3	January 2007
የካቲት 1999	102.9	100.6	106.5	104.6	102.1	100.5	105.0	105.5	129.0	101.9	100.1	97.6	103.8	102.5	102.5	102.5	February "
መጋቢት 1999	105.4	100.4	107.9	107.8	101.7	100.8	109.8	111.2	175.2	102.3	103.4	97.4	110.7	101.6	101.6	101.6	March "
ሚያዝያ 1999	107.7	100.8	109.3	112.1	110.1	104.5	117.1	114.2	188.0	103.4	102.9	99.5	111.8	105.0	105.0	105.0	April "
ግንቦት 1999	107.9	101.5	109.7	113.1	106.4	104.7	119.5	107.7	209.2	99.9	102.7	97.9	110.2	103.8	103.8	103.8	May "
ሰኔ 1999	109.5	102.4	109.7	107.2	108.4	104.3	121.0	110.0	223.6	101.5	104.7	98.8	111.2	107.8	107.8	107.8	June "
2000																	2007/2008
ሐምሌ 1999	113.0	105.2	112.9	116.0	109.3	105.6	124.3	110.9	241.3	102.8	110.5	99.3	109.6	111.7	111.7	111.7	July "
ኦገስት 1999	118.1	108.2	114.4	117.8	110.9	106.3	128.4	115.3	327.3	103.5	113.0	98.6	110.1	112.3	112.3	112.3	August "
መስከረም 2000	121.9	112.9	114.8	122.1	113.6	105.1	131.4	117.3	361.3	104.9	115.4	95.1	110.4	113.9	113.9	113.9	September "
ጥቅምት 2000	124.4	116.5	115.7	123.0	111.6	108.5	139.6	124.2	372.3	104.5	117.2	95.3	109.8	111.3	111.3	111.3	October "
ገዳር 2000	123.8	117.5	116.0	126.9	114.8	108.3	143.0	132.3	295.6	107.9	123.7	95.1	109.8	112.5	112.5	112.5	November "
ታህሳስ 2000	125.7	119.9	116.0	126.3	115.1	110.7	145.0	138.3	294.3	114.1	121.8	95.4	110.8	114.7	114.7	114.7	December "

Revised from January 2007 - November 2007

ሠንጠረዥ 2ሀ:- ጠቅላላ የ ስግግር ዋጋ መመዘኛ ኢንዱስትሪ ግብዓት በአገር አቀፍ እና በክልሎች ደረጃ
 ታህሳስ 1999 = 100

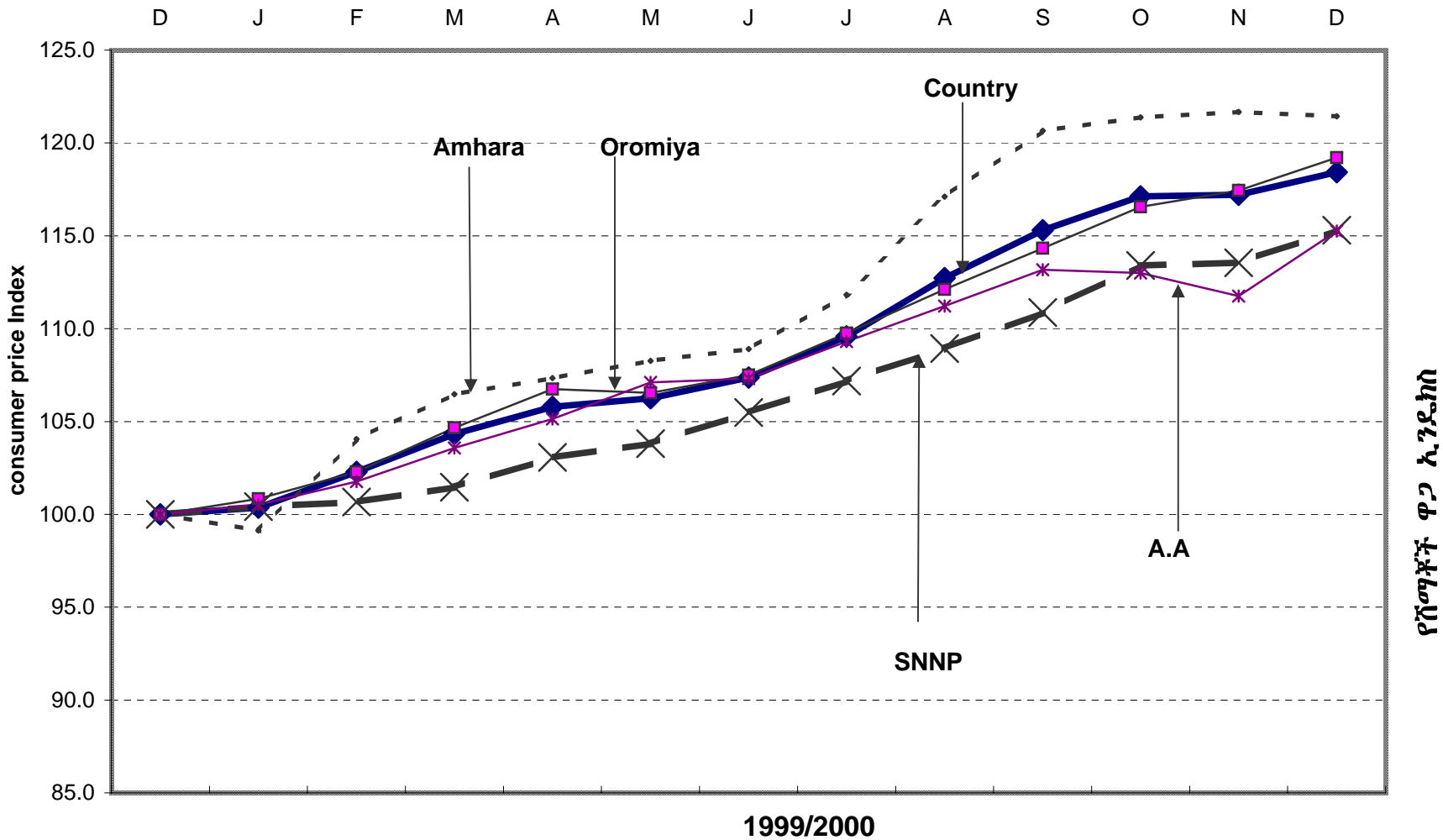
Table 2a: Summary of General Consumer Price Indices at Country and Regional Levels
 December 2006=100

ወርና ዓመት	Reporting Level												Month and Year	
	Eth.	A.A.	Afar	Amhara	B.Gumuz	D.Dawa	Gambela	Harari	Oromia	SNNP	Somalia	Tigray		
ታህሳስ 1999	100.0	100.0	100.0	100.0	100.0	100.0	100.0	100.0	100.0	100.0	100.0	100.0	100.0	December 2006
ጥር 1999	100.4	100.5	101.3	99.1	102.8	100.3	100.8	101.4	100.8	100.4	101.0	100.8	100.8	January 2007
የካቲት 1999	102.3	101.8	102.4	104.1	103.3	101.2	102.0	98.9	102.3	100.7	101.7	101.3	101.3	February "
መጋቢት 1999	104.3	103.6	110.6	106.5	105.1	106.6	105.6	101.1	104.7	101.5	101.9	103.9	103.9	March "
ግንቦት 1999	105.8	105.1	108.6	107.3	107.1	107.1	107.8	99.9	106.7	103.1	101.2	105.1	105.1	April "
ግንቦት 1999	106.3	107.1	106.7	108.3	108.3	108.2	105.9	101.0	106.5	103.8	101.5	106.7	106.7	May "
ሰኔ 1999	107.4	107.3	110.1	108.9	108.8	108.9	106.4	101.5	107.5	105.5	102.6	108.8	108.8	June "
2000														2007/2008
ሐምሌ 1999	109.6	109.3	111.9	111.8	113.6	110.9	109.2	103.9	109.7	107.2	103.9	110.3	110.3	July "
ነሐሴ 1999	112.7	111.2	116.6	117.1	121.3	114.2	113.9	107.7	112.1	108.9	107.3	115.5	115.5	August "
መስከረም 2000	115.3	113.2	118.7	120.7	127.0	116.7	116.4	108.3	114.3	110.9	107.4	121.4	121.4	September "
ኅዳር 2000	117.1	113.0	119.1	121.4	128.3	116.6	116.4	109.5	116.6	113.4	110.1	125.7	125.7	October "
ኅዳር 2000	117.2	111.8	118.0	121.7	129.7	116.8	117.2	108.5	117.4	113.6	109.6	120.1	120.1	November "
ታህሳስ 2000	118.4	115.3	118.5	121.4	131.3	119.0	118.2	110.0	119.2	115.3	109.4	120.7	120.7	December "

Revised from January 2007 - November 2007

General CPI for Country Level and Major Regions

ጠቅላላ የሽያጭ ዋጋ ኢንዱክሽን ለአገር አቀፍና ለዋና ዋና ክልሎች
2007/2008



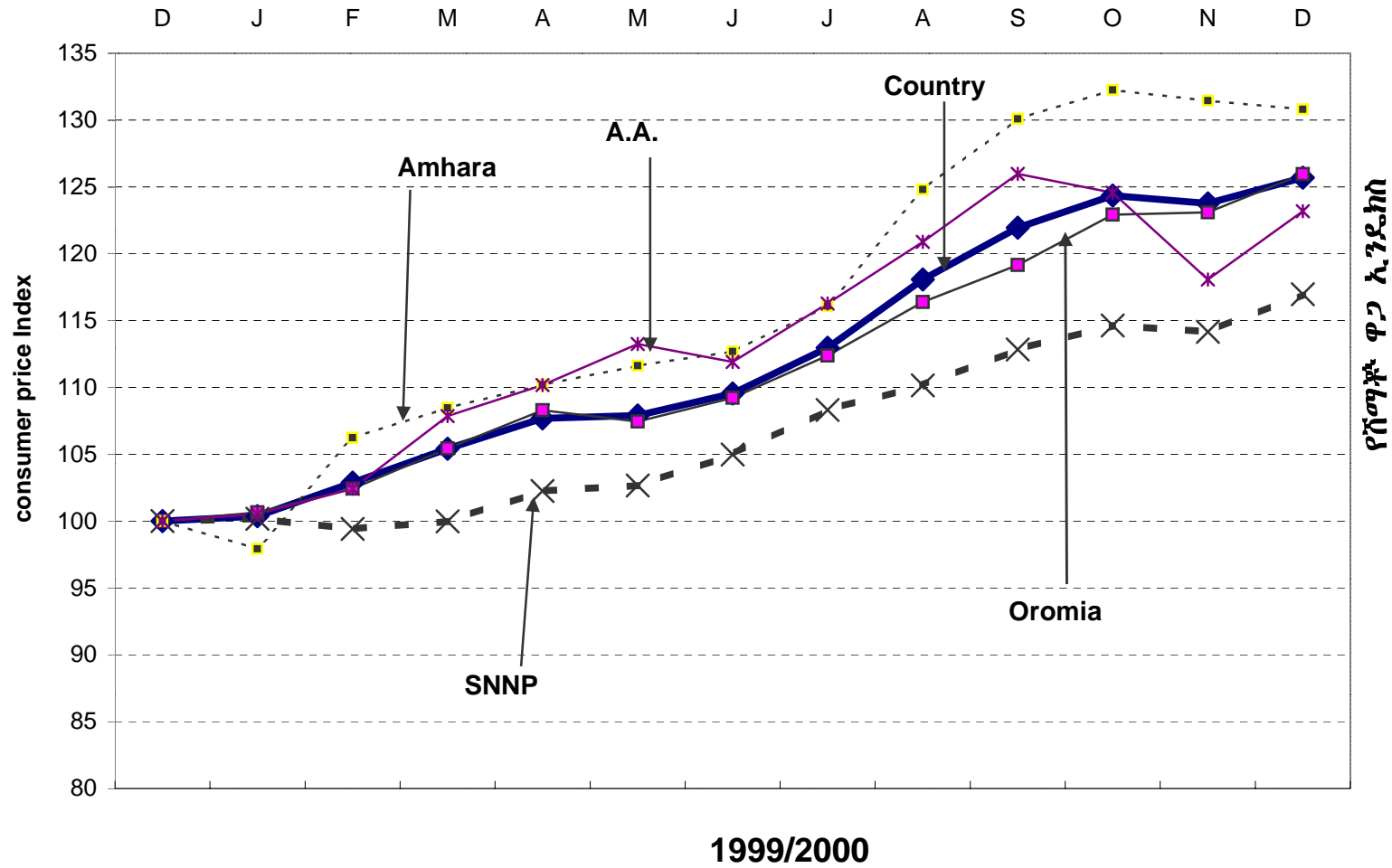
ሠንጠረዥ 2ለ፡- የምግብ ዋጋ መመዘኛ እንደነበረ ማጠቃለያ በአገር አቀፍ እና በክልሎች ደረጃ
 ታህሳስ 1999 = 100

Table 2b: Summary of Consumer Price Indices of Food at Country and Regional Levels
 December 2006=100

ወርና ዓመት	Reporting Level												Month and Year	
	Eth.	A.A.	Afar	Amhara	B.Gumuz	D.Dawa	Gambela	Harari	Oromia	SNNP	Somalia	Tigray		
ታህሳስ 1999	100.0	100.0	100.0	100.0	100.0	100.0	100.0	100.0	100.0	100.0	100.0	100.0	100.0	December 2006
ጥር 1999	100.4	100.5	101.4	97.9	99.1	99.2	100.3	102.5	100.6	100.2	101.6	101.5	101.5	January 2007
የካቲት 1999	102.9	102.4	102.0	106.2	100.0	100.2	102.6	100.9	102.4	99.4	101.8	101.9	101.9	February "
መጋቢት 1999	105.4	107.9	110.2	108.5	104.3	108.2	106.6	104.8	105.4	100.0	103.0	105.5	105.5	March "
ሚያዝያ 1999	107.7	110.2	113.4	110.2	105.3	109.4	111.4	102.5	108.3	102.2	102.0	107.0	107.0	April "
ግንቦት 1999	107.9	113.2	109.9	111.6	107.8	110.8	107.3	103.4	107.5	102.7	101.9	109.6	109.6	May "
ሰኔ 1999	109.5	111.9	114.7	112.7	108.8	111.6	108.2	103.9	109.2	105.0	102.3	111.1	111.1	June "
2000														2007/2008
ሐምሌ 1999	113.0	116.3	118.7	116.1	114.9	113.6	112.3	107.9	112.4	108.3	105.0	114.7	114.7	July "
ኦገስት 1999	118.1	120.9	125.5	124.8	123.2	120.1	120.9	114.9	116.4	110.1	109.3	122.7	122.7	August "
መስከረም 2000	121.9	126.0	128.5	130.1	133.4	123.5	125.3	115.6	119.2	112.8	110.7	131.5	131.5	September "
ጥቅምት 2000	124.4	124.6	129.1	132.3	134.6	121.5	124.8	116.5	122.9	114.6	113.0	134.0	134.0	October "
ኅዳር 2000	123.8	118.1	126.5	131.4	135.7	121.2	126.5	114.8	123.1	114.2	112.2	129.8	129.8	November "
ታህሳስ 2000	125.7	123.2	127.8	130.8	139.1	123.3	126.6	116.4	125.9	117.0	111.5	130.8	130.8	December "

Revised from January 2007 - November 2007

Food CPI for Country Level and Major Regions
 የምግብ የሽያጭ ዋጋ ኢንዱክስ ለአገር አቀፍና ለዋና ዋና ክልሎች
 2007/2008



ሠንጠረዥ 3 ሀ:- ጠቅላላ የሽግግር የጋ መመዘኛ ኢንዱስትሪ ቢሮ የተካተቱ ክፍሎች ለአዲስ አበባ ከተማ መስተዳደር
 ታህሳስ 1999 = 100

Table 3a: General Consumer Price Index and Its Components for Addis Ababa City Administration
 December 2006 = 100

ወርና ዓመት	ጠቅላላ ኢንዱስትሪ	ጠቅላላ የምግብ ኢንዱስትሪ	ጠቅላላ የምግብ ከ ኢንዱስትሪ	Non-food Consumer Price Index Components											Month and Year
				መጠጥ	ቢዳራና ትምህርት	ልብና መጫወያ	የቤት ኪራይ የቤት መሥሪያ ስቃይትና ሌሎች ነጻድና የቤት	የቤት ስቃይት የቤት ግንባታና የቤት ተሳታፊ የቤት ሠራተኛ ደመወዝ	ሕክምና	ትራንስፖርትና መገናኛ	መዝናኛና ትምህርት	የግል ንጽህናና የግል ቋጫ ስቃይት	ሌሎች ስቃይት		
	General Index	Food Total	Non-Food Total	Beverages	Cigarettes and Tobacco	Clothing and Footwear	House Rent, Construction Materials, Water, and Fuel and Power	Furniture, Furnishings, Household Equipment and Operation	Medical Care and Health	Transport and Communication	Recreation, Entertainment and Education	Personal Care and Effects	Miscellaneous Goods		
ታህሳስ 1999	100.0	100.0	100.0	100.0	100.0	100.0	100.0	100.0	100.0	100.0	100.0	100.0	100.0	100.0	December 2006
ጥር 1999	100.5	100.5	100.5	102.1	100.1	102.9	100.5	103.4	103.9	98.3	96.5	100.3	100.1	January 2007	
የካቲት 1999	101.8	102.4	101.3	103.5	102.0	106.3	101.3	103.8	107.6	98.1	94.8	102.6	100.0	February "	
መግቢት 1999	103.6	107.9	100.6	107.0	101.4	104.4	99.3	104.8	108.0	98.1	95.8	101.8	97.7	March "	
ሚያዝያ 1999	105.1	110.2	101.6	104.5	102.3	104.6	101.2	108.2	108.4	98.1	95.5	102.8	97.6	April "	
ግንቦት 1999	107.1	113.2	102.8	110.6	102.8	107.2	101.2	110.3	115.5	98.4	97.4	103.4	98.6	May "	
ሰኔ 1999	107.3	111.9	104.1	109.9	101.7	109.5	102.8	112.9	115.2	98.3	96.5	106.4	102.4	June "	
2000														2007/2008	
ሐምሌ 1999	109.3	116.3	104.5	111.8	100.4	110.0	103.4	112.8	114.9	98.2	96.9	106.1	102.4	July "	
ክሐሴ 1999	111.2	120.9	104.5	112.3	101.5	111.0	102.9	112.3	113.5	98.5	97.7	106.6	102.4	August "	
መስከረም 2000	113.2	126.0	104.3	117.6	101.4	114.9	98.7	112.8	118.0	98.2	102.4	108.5	101.0	September "	
ኅዳር 2000	113.0	124.6	105.0	117.5	102.8	118.7	98.9	114.8	118.6	97.9	100.8	110.1	101.0	October "	
ጥቅምት 2000	111.8	118.1	107.4	118.7	102.4	128.5	98.9	121.7	123.3	97.6	101.4	114.0	102.4	November "	
ታህሳስ 2000	115.3	123.2	109.7	124.8	101.3	131.3	99.7	132.5	122.8	97.6	104.2	115.0	101.1	December "	

Revised from January 2007 - November 2007

ሠንጠረዥ 3 ስ:- ጠቅላላ የሽግግር ዋጋ መመዘኛ ኢንዱክስ በሥሩ የተካተቱ ክፍሎች ለአዲስ አበባ ከተማ መስተዳድር
 ታህሳስ 1999 = 100

Table 3b: Consumer Price Index of Total Food and Its Components for Addis Ababa City Administration
 December 2006 = 100

ወርና ዓመት	ጠቅላላ ምግብ Food Total	እህል Cereals	በቤት ውስጥ የተወሰዱ የምግብ ዓይነቶች FOOD TAKEN AT HOME											ከቤት ውጭ የተወሰዱ ምግቦች Food taken away from home	Month and Year	
			ጥራጥራ Pulses	ዳቦና ሌሎች የተዘጋጁ ምግቦች Bread and other Prepared Food	ሥጋ Meat	ወተት+ ዓይብና እንቁላል Milk, Cheese and Egg	ዘይትና ቅባቶች Oils and Fats	አትክልትና ፍራፍራ Vegetables and Fruits	ቅመም ቅመም Spices	ድንችና ሌሎች ሥራሥሮች Potatoes, Other Tubers and Stems	ያልተቆላ ቤናና ሻይ ቅጠል Coffee (beans, whole) and Tea Leaves	ሌሎች ምግቦች Other Food Items	የግብረጫ አገልግሎት Milling Charges			
ታህሳስ 1999	100.0	100.0	100.0	100.0	100.0	100.0	100.0	100.0	100.0	100.0	100.0	100.0	100.0	100.0	100.0	December 2006
ጥር 1999	100.5	99.8	105.0	102.0	101.8	103.3	97.5	105.2	102.1	108.4	109.0	99.5	100.3	100.6	100.6	January 2007
የካቲት 1999	102.4	100.6	108.0	102.1	100.4	100.6	99.5	130.0	112.6	107.2	101.2	99.9	101.2	122.3	122.3	February "
መጋቢት 1999	107.9	101.3	110.6	106.6	104.0	105.7	104.7	133.6	193.2	113.1	105.9	108.1	102.9	105.3	105.3	March "
ሚያዝያ 1999	110.2	99.6	109.8	111.4	113.9	111.8	112.4	124.1	194.9	115.1	107.5	102.2	103.5	106.5	106.5	April "
ግንቦት 1999	113.2	101.4	117.9	112.9	109.8	121.4	114.1	114.6	215.4	114.3	107.4	104.0	103.5	108.6	108.6	May "
ሰኔ 1999	111.9	102.7	115.6	109.3	105.9	117.5	118.0	110.9	214.6	100.2	105.3	104.2	108.2	111.0	111.0	June "
2000																2007/2008
ሐምሌ 1999	116.3	103.6	118.2	110.3	109.8	120.5	119.6	130.7	272.9	98.7	109.6	103.5	110.3	110.3	110.3	July "
ኦገስት 1999	120.9	105.2	120.1	111.6	111.1	120.3	124.2	159.7	345.4	100.6	113.9	102.0	109.9	110.4	110.4	August "
መስከረም 2000	126.0	107.1	123.1	119.6	115.0	122.6	126.3	161.4	393.7	111.0	117.6	96.7	114.7	110.8	110.8	September "
ጥቅምት 2000	124.6	109.0	115.3	115.8	113.3	124.2	128.3	150.7	374.6	111.1	117.7	95.0	110.8	112.4	112.4	October "
ገዳሪ 2000	118.1	105.6	120.7	116.9	112.7	122.4	132.5	155.4	223.7	135.6	130.3	95.8	111.7	116.6	116.6	November "
ታህሳስ 2000	123.2	107.7	123.4	117.2	115.0	122.7	137.4	150.2	286.0	158.5	131.4	98.4	122.7	120.8	120.8	December "

Revised from January 2007 - November 2007

ሠንጠረዥ 4ሀ፡- ጠቅላላ የ ሽግግር ዋጋ መመዘኛ ኢንዱስትሪ ቢሥሩ የተካተቱ ክፍሎች ለአፋር ክልላዊ መንግሥት ታህሳስ 1999 = 100

Table 4a: General Consumer Price Index and Its Components for the Afar Regional State
December 2006 = 100

ወርና ዓመት	ጠቅላላ ኢንዱስትሪ	ጠቅላላ የምግብ ኢንዱስትሪ	ጠቅላላ የምግብ ከፍተኛ ኢንዱስትሪ	Non-food Consumer Price Index Components										Month and Year
				መጠጥ	ቢዳራና ትምህርት	ልሳሽና መጓጊያ	የቤት ኪራይ፣ የቤት መሥሪያ ስቃዎች፣ውሃ፣ ነጻጅና ነጻይል	የቤት ስቃዎች የቤት ግንቢያዎች የቤት ቁሳቁስና የቤት ሠራተኛ ደመወዝ	ሕክምና	ትራንስፖርትና መገናኛ	መዝናኛና ትምህርት	የግል ንጽህናና የግል ጽግ ዕቃዎች	ሌሎች ስቃዎች	
General Index	Food Total	Non-Food Total	Beverages	Cigarettes and Tobacco	Clothing and Footwear	House Rent, Construction Materials, Water, and Fuel and Power	Furniture, Furnishings, Household Equipment and Operation	Medical Care and Health	Transport and Communication	Recreation, Entertainment and Education	Personal Care and Effects	Miscellaneous Goods	Month and Year	
ታህሳስ 1999	100.0	100.0	100.0	100.0	100.0	100.0	100.0	100.0	100.0	100.0	100.0	100.0	December 2006	
ጥር 1999	101.3	101.4	101.1	100.0	99.0	102.3	101.7	98.4	100.8	102.4	99.2	99.9	January 2007	
የካቲት 1999	102.4	102.0	102.8	103.3	100.3	106.3	102.2	100.0	100.8	112.0	88.0	100.6	February "	
መጋቢት 1999	110.6	110.2	111.0	104.1	101.6	107.6	122.2	97.7	96.7	111.6	93.9	100.6	March "	
ጊዳር 1999	108.6	113.4	102.9	105.7	100.0	105.0	103.1	100.3	97.9	113.8	85.0	100.9	April "	
ግንቦት 1999	106.7	109.9	102.8	105.7	102.8	106.7	101.8	101.1	96.5	113.2	84.7	99.3	May "	
ሰኔ 1999	110.1	114.7	104.6	105.7	100.0	110.0	102.8	102.9	97.8	116.6	87.5	100.7	June "	
2000													2007/2008	
ሐምሌ 1999	111.9	118.7	103.7	106.5	100.0	109.6	100.1	104.5	98.1	117.9	87.4	100.0	July "	
ክሐሴ 1999	116.6	125.5	106.0	109.0	99.7	111.4	103.4	106.6	98.1	119.1	87.9	101.4	August "	
መስከረም 2000	118.7	128.5	107.1	109.0	100.0	111.5	106.2	106.2	100.0	120.3	87.6	99.0	September "	
ጥቅምት 2000	119.1	129.1	107.3	106.8	100.0	110.0	106.6	105.8	98.1	120.5	93.9	106.9	October "	
ኅዳር 2000	118.0	126.5	108.0	109.3	100.0	112.0	106.6	106.4	99.4	120.5	91.8	110.2	November "	
ታህሳስ 2000	118.5	127.8	107.5	109.3	99.3	111.9	106.4	105.1	100.2	118.8	90.1	108.0	December "	

Revised from January 2007 - November 2007

ወንጠረዥ 5ሀ፡- ጠቅላላ የ ሽግግር ዋጋ መመዘኛ ኢንዱስትሪ ቢሥሩ የተከተቱ ክፍሎች ለአግራ ክልላዊ መንግሥት
 ታህሳስ 1999 = 100

Table 5a: General Consumer Price Index and Its Components for the Amhara Regional State
 December 2006 = 100

ወርና ዓመት	ጠቅላላ ኢንዱስትሪ	ጠቅላላ የምግብ ኢንዱስትሪ	ጠቅላላ የምግብ ካህን ያልሆኑ ኢንዱስትሪ	Non-food Consumer Price Index Components											Month and Year
				መጠን	ቢዳራና ትምባሆ	ልሳሳና መጫሚያ	የቤት ኪራይ፣ የቤት መሥሪያ ስቃዎች፣ውሃ፣ ንዳጅናሃይል	የቤት ስቃዎች የቤት ግንባታዎች የቤት ቁሳቁስና የቤት ሠራተኛ ደመወዝ	ሕክምና	ትራንስፖርትና መገናኛ	መዝናኛና ትምህርት	የግል ንጽህናና የግል ቋጫ ስቃዎች	ሌሎች ስቃዎች		
ታህሳስ 1999	100.0	100.0	100.0	100.0	100.0	100.0	100.0	100.0	100.0	100.0	100.0	100.0	100.0	100.0	December 2006
ጥር 1999	99.1	97.9	101.1	100.1	101.3	102.8	101.0	100.8	99.2	99.5	99.7	100.8	100.1	100.1	January 2007
የካቲት 1999	104.1	106.2	100.5	101.5	100.5	97.3	101.4	100.7	103.8	98.5	101.6	100.5	100.1	100.1	February "
መጋቢት 1999	106.5	108.5	103.2	100.5	107.8	101.3	104.9	101.7	102.0	99.4	99.6	103.4	100.1	100.1	March "
ሚያዝያ 1999	107.3	110.2	102.6	100.8	107.3	102.2	103.0	104.1	99.7	99.9	102.6	103.7	100.1	100.1	April "
ግንቦት 1999	108.3	111.6	102.7	103.7	109.3	103.6	102.3	103.9	99.1	100.1	103.3	106.7	100.1	100.1	May "
ሰኔ 1999	108.9	112.7	102.7	104.2	108.0	103.2	102.0	106.0	99.6	109.2	102.9	100.9	100.1	100.1	June "
2000															2007/2008
ሐምሌ 1999	111.8	116.1	104.8	104.0	106.5	106.4	104.8	107.5	100.7	99.4	104.1	102.8	100.1	100.1	July "
ነሐሴ 1999	117.1	124.8	104.5	104.0	108.0	107.3	103.6	108.4	108.7	99.3	103.2	103.4	100.1	100.1	August "
መስከረም 2000	120.7	130.1	105.1	104.1	108.5	109.3	103.9	109.5	105.7	98.9	103.3	104.9	100.1	100.1	September "
ኅዳር 2000	121.4	132.3	103.5	101.1	107.2	106.9	100.9	113.5	108.4	99.8	105.6	110.6	99.9	99.9	October "
ግዳር 2000	121.7	131.4	105.6	104.7	105.0	105.8	104.5	115.8	106.4	99.6	105.5	110.5	100.0	100.0	November "
ታህሳስ 2000	121.4	130.8	106.1	104.6	108.5	106.2	104.9	115.6	107.8	99.9	106.6	111.9	101.7	101.7	December "

Revised from January 2007 - November 2007

ሠንጠረዥ 5ለ፡- ጠቅላላ የምግብና የምግብ ክፍሎች የ ስንጠረዥ የጋ መመዘኛ ኢንዱስትሪ ለአግራ ክልላዊ መንግሥት
 ታህሳስ 1999 = 100

Table 5b: Consumer Price Index of Total Food and Its Components for the Amhara Regional State
 December 2006 = 100

ወርና ዓመት	ጠቅላላ የምግብ	Cereals	FOOD TAKEN AT HOME											ከቤት ውጪ የተወሰዱ የምግቦች	Month and Year	
			Pulses	Bread and other Prepared Food	Meat	Milk,Cheese and Egg	Oils and Fats	Vegetables and Fruits	Spices	Potatoes, Other Tubers and Stems	Coffee (beans, whole) and Tea Leaves	Other Food Items	Milling Charges			Food taken away from home
ታህሳስ 1999	100.0	100.0	100.0	100.0	100.0	100.0	100.0	100.0	100.0	100.0	100.0	100.0	100.0	100.0	100.0	December 2006
ጥር 1999	97.9	94.9	100.5	100.4	101.4	100.7	104.0	101.5	102.3	96.0	98.8	97.3	99.7	100.1	100.1	January 2007
የካቲት 1999	106.2	105.8	103.1	101.8	101.2	101.7	105.9	109.0	146.8	96.6	102.1	99.8	100.6	99.8	99.8	February "
መጋቢት 1999	108.5	107.7	104.6	104.0	97.6	99.9	115.6	111.3	152.1	99.4	103.6	95.6	105.2	104.1	104.1	March "
ሚያዝያ 1999	110.2	106.2	104.5	109.9	111.7	102.7	127.1	117.5	170.0	98.9	99.6	99.8	107.5	104.9	104.9	April "
ግንቦት 1999	111.6	107.5	105.2	108.3	106.7	105.6	131.0	103.1	207.2	96.0	100.2	93.7	107.3	98.9	98.9	May "
ሰኔ 1999	112.7	107.7	106.4	109.4	105.9	107.0	130.8	104.8	203.9	94.8	100.4	99.4	108.9	106.1	106.1	June "
2000																2007/2008
ሐምሌ 1999	116.1	110.7	109.1	111.8	107.0	114.4	135.4	113.8	215.7	93.1	102.3	100.6	108.4	109.7	109.7	July "
ኤሌሴ 1999	124.8	115.2	110.6	114.5	108.0	118.5	136.5	119.2	319.1	93.7	103.9	100.4	108.8	111.8	111.8	August "
መስከረም 2000	130.1	122.1	112.0	115.1	109.2	120.8	139.1	129.5	342.3	95.2	106.8	96.7	108.2	112.4	112.4	September "
ጥቅምት 2000	132.3	123.6	113.3	117.1	112.7	121.6	149.8	133.7	343.5	95.4	114.1	97.9	106.5	114.4	114.4	October "
ኅዳር 2000	131.4	126.3	112.2	123.2	115.7	124.9	153.1	146.2	276.9	108.0	127.9	93.1	105.3	116.9	116.9	November "
ታህሳስ 2000	130.8	126.1	110.4	123.6	115.3	120.4	154.1	146.1	265.4	110.9	128.0	95.6	104.4	119.0	119.0	December "

Revised from January 2007 - November 2007

ሠንጠረዥ 6ሀ፡- ጠቅላላ የ ሽግግር ዋጋ መመዘኛ ኢንዱስትሪ ቢሥሩ የተካተቱ ክፍሎች ለቤኔሽንጉል ጉምዝ ክልላዊ መንግሥት ታህሳስ 1999 = 100

Table 6a: General Consumer Price Index and Its Components for the Benishangul Gumuz Regional State
December 2006 = 100

ወርና ዓመት	ጠቅላላ ኢንዱስትሪ General Index	ጠቅላላ ምግብ ኢንዱስትሪ Food Total	ጠቅላላ ምግብ ካልሆኑ ኢንዱስትሪ Non-Food Total	Non-food Consumer Price Index Components										Month and Year	
				መጠጥ Beverages	ቢዳራና ትምባሆ Cigarettes and Tobacco	ልብና መጓጊያ Clothing and Footwear	የቤት ኪራይ፣ የቤት መሥሪያ ስቃዎች፣ውሃ፣ ነዳጅና ነገል House Rent, Construction Materials, Water, and Fuel and Power	የቤት ስቃዎች የቤት ግንቢያዎች የቤት ቁሳቁስና የቤት ሠራተኛ ደመወዝ Furniture, Furnishings, Household Equipment and Operation	ሕክምና Medical Care and Health	ትራንስፖርትና መገናኛ Transport and Communication	መዝናኛና ትምህርት Recreation, Entertainment and Education	የግል ንጹህናና የግል ጽግ ስቃዎች Personal Care and Effects	ሌሎች ስቃዎች Miscellaneous Goods		
ታህሳስ 1999	100.0	100.0	100.0	100.0	100.0	100.0	100.0	100.0	100.0	100.0	100.0	100.0	100.0	100.0	December 2006
ጥር 1999	102.8	99.1	107.7	100.8	100.0	100.8	121.9	98.9	98.9	100.0	100.5	100.4	101.2	101.2	January 2007
የካቲት 1999	103.3	100.0	107.7	101.7	99.0	105.4	119.0	100.1	99.2	100.0	100.8	99.6	99.9	99.9	February "
መጋቢት 1999	105.1	104.3	106.1	100.2	101.2	102.2	116.2	101.4	97.8	100.2	98.9	101.2	97.0	97.0	March "
ሚያዝያ 1999	107.1	105.3	109.5	101.7	107.4	106.1	121.1	104.5	99.5	99.8	103.8	100.2	101.2	101.2	April "
ግንቦት 1999	108.3	107.8	109.1	103.8	107.4	106.1	118.3	105.1	99.0	100.8	106.8	100.6	100.7	100.7	May "
ሰኔ 1999	108.8	108.8	108.7	105.1	107.4	106.0	118.0	102.9	99.2	101.2	103.8	101.6	101.2	101.2	June "
2000															2007/2008
ሐምሌ 1999	113.6	114.9	111.9	101.6	105.5	109.5	124.2	107.8	100.9	102.1	104.6	101.4	101.2	101.2	July "
ክሐሴ 1999	121.3	123.2	118.7	101.9	109.3	112.2	142.6	107.3	99.0	102.1	104.2	101.6	101.2	101.2	August "
መስከረም 2000	127.0	133.4	118.5	101.4	109.0	112.1	141.1	107.1	104.6	102.1	108.3	103.1	100.6	100.6	September "
ጥቅምት 2000	128.3	134.6	119.9	102.7	106.9	113.1	143.7	108.0	107.1	102.1	108.1	103.8	101.2	101.2	October "
ኅዳር 2000	129.7	135.7	121.7	104.1	108.1	120.1	143.6	109.8	107.9	101.1	107.9	107.5	102.9	102.9	November "
ታህሳስ 2000	131.3	139.1	120.9	110.5	112.4	120.7	137.9	111.5	111.3	100.0	106.2	109.6	102.4	102.4	December "

Revised from January 2007 - November 2007

ሠንጠረዥ 6ለ፡- ጠቅላላ ምግብና የምግብ ክፍሎች የ ሽግግር ዋጋ መመዘኛ ኢንዱስትሪ ለቤኒሻንጉል ጉምዝ ክልል መገንጠያ ጋራ ጋራ 1999 = 100

Table 6b: Consumer Price Index of Total Food and Its Components for the Benishangul Gumuz Regional state December 2006 = 100

ወርና ዓመት	ጠቅላላ ምግብ	እህል	በቤት ውስጥ የተወሰዱ የምግብ ዓይነቶች											ከቤት ውጭ የተወሰዱ ምግቦች	Month and Year
			ጥራጥራ	ዳቦና ሌሎች የተዘጋጁ ምግቦች	ሥጋ	ወተት+ ዓይብና እንቁላል	ዘይትና ቅባቶች	አትክልትና ፍራፍራ	ቅመም ቅመም	ድንችና ሌሎች ሥራሥሮች	ያልተቆላ ቡናና ሻይ ቅጠል	ሌሎች ምግቦች	የግብረጫ አገልግሎት		
	Food Total	Cereals	Pulses	Bread and other Prepared Food	Meat	Milk,Cheese and Egg	Oils and Fats	Vegetables and Fruits	Spices	Potatoes, Other Tubers and Stems	Coffee (beans, whole) and Tea Leaves	Other Food Items	Milling Charges	Food taken away from home	
ታህሳስ 1999	100.0	100.0	100.0	100.0	100.0	100.0	100.0	100.0	100.0	100.0	100.0	100.0	100.0	100.0	December 2006
ጥር 1999	99.1	97.0	105.8	99.8	100.5	99.1	101.5	93.8	114.1	99.6	100.5	102.6	103.0	98.7	January 2007
የካቲት 1999	100.0	98.9	101.1	99.7	100.7	100.5	101.9	101.0	112.9	105.4	100.5	99.6	103.9	97.5	February "
መጋቢት 1999	104.3	99.4	111.3	102.1	110.5	100.7	105.0	118.4	149.0	96.3	100.5	97.8	104.0	99.1	March "
ሚያዝያ 1999	105.3	97.2	107.0	104.0	109.1	99.1	116.2	117.7	179.0	95.1	102.5	100.1	109.8	102.8	April "
ግንቦት 1999	107.8	98.5	108.4	108.8	116.8	96.3	115.9	109.4	187.4	119.1	111.5	107.9	108.1	106.4	May "
ሰኔ 1999	108.8	101.5	108.7	111.2	117.0	95.5	118.4	104.5	193.4	110.4	112.2	100.9	110.0	105.5	June "
2000															2007/2008
ሐምሌ 1999	114.9	108.8	111.9	113.7	127.0	103.7	123.0	111.0	207.4	113.3	121.5	99.7	110.0	105.5	July "
ክሌሌ 1999	123.2	116.4	111.3	114.8	126.7	104.6	123.4	113.0	329.3	111.2	123.6	100.6	110.0	105.5	August "
መስከረም 2000	133.4	132.9	112.6	121.0	127.1	103.3	126.5	117.1	381.0	116.5	124.0	99.7	109.2	107.4	September "
ጥቅምት 2000	134.6	134.9	111.5	118.8	126.7	105.1	131.9	108.0	390.0	116.1	124.8	97.0	107.8	110.7	October "
ኅዳር 2000	135.7	138.1	111.8	117.5	126.6	106.9	130.3	105.9	384.5	123.4	124.0	96.2	107.8	111.9	November "
ታህሳስ 2000	139.1	148.6	97.5	113.7	119.0	104.1	135.6	110.3	366.8	118.9	126.5	96.5	107.9	115.5	December "

Revised from January 2007 - November 2007

ሠንጠረዥ 7ሀ:- ጠቅላላ የ ሽግግር ዋጋ መመዘኛ ኢንዱስትሪ ቢሥሩ የተካተቱ ክፍሎች ለድረ-ገጽ አስተዳደር ካውንስል
 ታህሳስ 1999 = 100

Table 7a: General Consumer Price Index and Its Components for the Dire Dawa Administrative Council
 December 2006 = 100

ወርና ዓመት	ጠቅላላ ኢንዱስትሪ	ጠቅላላ የምግብ ኢንዱስትሪ	ጠቅላላ የምግብ ካክ ያልሆኑ ኢንዱስትሪ	Non-food Consumer Price Index Components										Month and Year
				መጠን	ቢዳራና ትምህርት	ልሳሳና መጫሚያ	የቤት ኪራይ፣ የቤት መሥሪያ ስቃዎች፣ውሃ፣ ንግድና ሃይል	የቤት ስቃዎች የቤት ግንባታዎች የቤት ቁሳቁስና የቤት ሠራተኛ ደመወዝ	ሕክምና	ትራንስፖርትና መገናኛ	መዝናኛና ትምህርት	የግል ንጽህናና የግል ቋጫ ስቃዎች	ሌሎች ስቃዎች	
	General Index	Food Total	Non-Food Total	Beverages	Cigarettes and Tobacco	Clothing and Footwear	House Rent, Construction Materials, Water, and Fuel and Power	Furniture, Furnishings, Household Equipment and Operation	Medical Care and Health	Transport and Communication	Recreation, Entertainment and Education	Personal Care and Effects	Miscellaneous Goods	
ታህሳስ 1999	100.0	100.0	100.0	100.0	100.0	100.0	100.0	100.0	100.0	100.0	100.0	100.0	100.0	December 2006
ጥር 1999	100.3	99.2	101.5	95.2	100.7	99.7	101.7	101.3	101.3	102.4	102.1	108.9	100.0	January 2007
የካቲት 1999	101.2	100.2	102.3	95.7	100.7	99.7	101.1	105.3	100.9	100.2	110.3	107.1	100.0	February "
መጋቢት 1999	106.6	108.2	105.0	104.5	100.7	101.7	107.1	104.9	103.8	103.1	110.4	104.1	100.0	March "
ሚያዝያ 1999	107.1	109.4	104.7	104.4	98.9	99.3	108.6	103.2	101.5	103.3	111.1	104.7	100.0	April "
ግንቦት 1999	108.2	110.8	105.6	104.7	100.7	100.7	108.7	104.7	103.8	103.1	112.5	107.8	100.0	May "
ሰኔ 1999	108.9	111.6	106.1	105.3	100.9	103.0	108.7	105.8	102.4	103.3	111.2	106.6	100.0	June "
2000														2007/2008
ሐምሌ 1999	110.9	113.6	108.1	105.2	100.7	102.0	115.1	107.0	102.4	103.1	111.7	106.4	100.0	July "
ነሐሴ 1999	114.2	120.1	108.1	106.5	100.7	101.7	115.1	107.0	102.4	103.1	111.7	108.7	100.0	August "
መስከረም 2000	116.7	123.5	109.8	105.7	100.7	103.1	117.8	111.8	102.2	103.1	110.7	105.3	100.0	September "
ጥቅምት 2000	116.6	121.5	111.6	105.8	100.7	105.1	117.6	118.8	112.9	103.1	109.7	106.3	101.0	October "
ገዳር 2000	116.8	121.2	112.4	109.6	100.7	105.5	117.2	121.0	114.3	103.3	114.6	105.6	101.0	November "
ታህሳስ 2000	119.0	123.3	114.5	111.7	100.7	109.8	118.3	123.6	119.8	103.1	116.4	106.5	105.2	December "

Revised from January 2007 - November 2007

ሠንጠረዥ 7ሎ፡- ጠቅላላ የምግብና የምግብ ክፍሎች የ ስግጥት ዋጋ መመዘኛ ኢንዱስትሪ ለድረ-ገጽ አስተዳደር ካውንሲል
 ታህሳስ 1999 = 100

Table 7b: Consumer Price Index of Total Food and Its Components for the Dire Dawa Administrative Council
 December 2006 = 100

ወርና ዓመት	ጠቅላላ የምግብ	Cereals	FOOD TAKEN AT HOME											ከቤት ውጪ የተወሰዱ የምግቦች	Month and Year	
			Pulses	Bread and other Prepared Food	Meat	Milk, Cheese and Egg	Oils and Fats	Vegetables and Fruits	Spices	Potatoes, Other Tubers and Stems	Coffee (beans, whole) and Tea Leaves	Other Food Items	Milling Charges			
ታህሳስ 1999	100.0	100.0	100.0	100.0	100.0	100.0	100.0	100.0	100.0	100.0	100.0	100.0	100.0	100.0	100.0	December 2006
ጥር 1999	99.2	97.2	101.0	100.8	99.9	98.9	97.8	95.6	95.0	93.8	102.5	97.9	100.0	100.0	100.0	January 2007
የካቲት 1999	100.2	97.1	111.5	100.0	98.3	100.3	97.9	96.4	116.7	85.4	109.4	99.7	100.0	90.5	100.0	February "
መጋቢት 1999	108.2	99.4	119.9	109.3	99.2	99.6	117.0	110.7	186.1	82.2	124.2	98.3	100.0	90.8	100.0	March "
ሚያዝያ 1999	109.4	102.2	138.2	108.8	105.6	102.0	117.9	104.4	187.4	83.8	123.3	95.1	100.0	88.3	100.0	April "
ግንቦት 1999	110.8	102.0	143.9	104.3	98.4	103.3	117.2	124.8	224.9	95.9	123.1	91.4	95.3	92.2	100.0	May "
ሰኔ 1999	111.6	107.8	147.6	104.3	100.9	102.7	102.4	132.4	223.6	94.8	121.1	90.7	95.3	90.3	100.0	June "
2000																2007/2008
ሐምሌ 1999	113.6	110.0	148.2	105.0	99.9	102.8	102.6	124.8	269.3	93.3	124.6	86.8	95.3	93.4	100.0	July "
ክሌሴ 1999	120.1	121.6	149.6	105.7	99.6	102.6	130.9	127.0	370.2	93.3	121.3	90.3	95.3	93.4	100.0	August "
መስከረም 2000	123.5	120.7	145.3	111.2	105.8	103.7	130.6	127.8	416.7	92.2	132.7	87.6	95.3	94.3	100.0	September "
ጥቅምት 2000	121.5	118.5	131.6	104.1	102.0	104.6	140.4	129.6	416.7	95.9	131.8	88.1	95.3	94.7	100.0	October "
ኅዳር 2000	121.2	123.3	130.4	106.6	105.0	110.8	138.6	128.2	254.2	98.0	131.2	88.6	95.3	110.1	100.0	November "
ታህሳስ 2000	123.3	125.0	133.1	108.5	103.6	106.6	145.6	136.8	303.9	102.2	131.0	89.4	86.6	109.7	100.0	December "

Revised from January 2007 - November 2007

ሠንጠረዥ 8ሀ፡- ጠቅላላ የ ሽግግት ዋጋ መመዘኛ ኢንዱስትሪ ቢሥሩ የተካተቱ ክፍሎች ለጋምቤላ ሕዝቦች ክልላዊ መንግሥት ታህሳስ 1999 = 100

Table 8a: General Consumer Price Index and Its Components for the Gambela Peoples Regional State December 2006 = 100

ወርና ዓመት	ጠቅላላ ኢንዱስትሪ	ጠቅላላ የምግብ ኢንዱስትሪ	ጠቅላላ የምግብ ከፍተኛ ኢንዱስትሪ	Non-food Consumer Price Index Components										Month and Year
				መጠጥ	ቢዳራና ትምባሆ	ልሳሽና መጫጫያ	የቤት ኪራይ፣ የቤት መሥሪያ ስቃዎች፣ውሃ፣ ነዳጅና ነገል	የቤት ስቃዎች የቤት ግንቢያዎች የቤት ቁሳቁስና የቤት ሠራተኛ ደመወዝ	ሕክምና	ትራንስፖርትና መገናኛ	መዝናኛና ትምህርት	የግል ንጽህናና የግል ጽግ ስቃዎች	ሌሎች ስቃዎች	
	General Index	Food Total	Non-Food Total	Beverages	Cigarettes and Tobacco	Clothing and Footwear	House Rent, Construction Materials, Water, and Fuel and Power	Furniture, Furnishings, Household Equipment and Operation	Medical Care and Health	Transport and Communication	Recreation, Entertainment and Education	Personal Care and Effects	Miscellaneous Goods	
ታህሳስ 1999	100.0	100.0	100.0	100.0	100.0	100.0	100.0	100.0	100.0	100.0	100.0	100.0	0.0	December 2006
ጥር 1999	100.8	100.3	101.3	100.9	99.1	100.4	101.5	104.8	101.9	100.0	103.6	100.0	0.0	January 2007
የካቲት 1999	102.0	102.6	101.3	103.7	99.6	101.0	100.4	104.7	99.0	100.0	97.9	102.9	0.0	February "
መጋቢት 1999	105.6	106.6	104.5	125.7	98.6	98.4	101.0	105.2	102.6	100.0	97.9	101.9	0.0	March "
ሚያዝያ 1999	107.8	111.4	103.3	115.8	99.6	100.2	101.1	104.8	100.1	100.0	97.9	102.9	0.0	April "
ግንቦት 1999	105.9	107.3	104.2	115.3	108.9	99.8	101.2	105.6	102.2	100.0	100.0	101.1	0.0	May "
ሰኔ 1999	106.4	108.2	104.3	115.6	108.9	100.2	100.0	108.3	113.7	100.0	102.3	100.4	0.0	June "
2000														2007/2008
ሐምሌ 1999	109.2	112.3	105.4	116.0	108.8	99.6	103.2	107.7	114.0	100.0	102.3	100.4	0.0	July "
ክሐሴ 1999	113.9	120.9	105.2	115.2	108.8	100.1	102.9	105.8	113.7	100.0	104.8	102.9	0.0	August "
መስከረም 2000	116.4	125.3	105.4	115.0	108.8	98.9	102.8	108.5	113.9	100.0	108.8	104.8	0.0	September "
ጥቅምት 2000	116.4	124.8	106.1	115.0	106.1	102.9	103.2	110.2	116.3	100.0	107.2	104.3	0.0	October "
ኅዳር 2000	117.2	126.5	105.6	115.0	103.2	102.8	103.2	108.8	113.4	100.0	106.0	104.3	0.0	November "
ታህሳስ 2000	118.2	126.6	107.8	117.7	101.3	108.0	104.5	115.4	113.7	100.0	104.9	103.0	0.0	December "

Revised from January 2007 - November 2007

ወንጠረዥ 8ለ፡- ጠቅላላ የምግብ ክፍሎች የ ሽግግር ዋጋ መመዘኛ ኢንዱስትሪ ለጋምቤላ ሕዝቦች ክልላዊ መንግሥት
 ታህሳስ 1999 = 100

Table 8b: Consumer Price Index of Total Food and Its Components for the Gambela Peoples Regional State
 December 2006 = 100

ወርና ዓመት	ጠቅላላ የምግብ	በቤት ውስጥ የተወሰዱ የምግብ ዓይነቶች											ከቤት ውጪ የተወሰዱ የምግቦች	Month and Year	
		እህል	ጥራጥረ	ዳቦና ሌሎች የተዘጋጁ የምግቦች	ሥጋ	ወተት+ ዓይብና እንቁላል	ዘይትና ቅባቶች	አትክልትና ፍራፍራ	ቅመግ ቅመም	ድንችና ሌሎች ሥራሥሮች	ያልተቆላ ቡናና ሻይ ቅጠል	ሌሎች የምግቦች			የግብረጫ አገልግሎት
Food Total	Cereals	Pulses	Bread and other Prepared Food	Meat	Milk,Cheese and Egg	Oils and Fats	Vegetables and Fruits	Spices	Potatoes, Other Tubers and Stems	Coffee (beans, whole) and Tea Leaves	Other Food Items	Milling Charges	Food taken away from home		
ታህሳስ 1999	100.0	100.0	100.0	100.0	100.0	100.0	100.0	100.0	100.0	100.0	100.0	100.0	100.0	100.0	December 2006
ጥር 1999	100.3	97.0	101.4	122.4	102.5	100.7	99.9	104.4	100.0	100.0	100.6	101.2	115.5	120.7	January 2007
የካቲት 1999	102.6	93.2	109.3	124.9	111.8	121.4	123.6	107.4	121.7	118.6	100.5	92.9	115.5	115.4	February "
መጋቢት 1999	106.6	100.0	110.4	125.0	108.0	100.1	119.9	114.0	182.5	120.9	100.7	100.0	108.7	121.4	March "
ግብርን 1999	111.4	101.5	114.1	125.6	122.5	121.6	126.4	117.4	216.4	123.7	105.4	100.0	104.9	125.4	April "
ግንቦት 1999	107.3	94.2	121.6	129.6	119.4	122.9	134.4	115.1	243.3	100.8	102.5	98.5	104.9	123.9	May "
ሰኔ 1999	108.2	95.6	121.7	125.7	122.5	124.8	131.2	115.5	243.3	97.2	103.7	98.8	104.9	120.7	June "
2000															2007/2008
ሐምሌ 1999	112.3	99.9	121.9	133.4	128.2	130.5	129.4	123.0	243.3	97.2	106.6	98.1	104.9	121.0	July "
ከሐሴ 1999	120.9	111.2	120.8	132.8	130.7	131.3	137.5	127.3	425.8	98.7	107.0	99.4	104.9	121.4	August "
መስከረም 2000	125.3	118.2	124.1	134.2	128.9	134.7	138.2	133.9	425.8	98.8	112.2	100.2	104.9	127.7	September "
ጥቅምት 2000	124.8	118.1	123.2	135.0	129.6	130.5	142.8	126.7	425.8	98.8	121.4	96.9	105.8	121.4	October "
ኅዳር 2000	126.5	118.5	123.1	134.7	129.1	134.5	142.6	131.9	425.8	108.7	131.5	100.1	105.8	131.5	November "
ታህሳስ 2000	126.6	117.6	125.2	136.0	126.0	134.5	147.5	133.9	425.8	125.3	122.4	107.3	105.8	133.9	December "

Revised from January 2007 - November 2007

ወንጠረዥ 9ሀ:- ጠቅላላ የ ሽያጭ ስራ መመዘኛ ኢንዱስትሪ በሥራ የተካተቱ ክፍሎች ለሐረር ሀዘብ ክልል መገንጠያ ስራ ዓመት 1999 = 100

Table 9a: General Consumer Price Index and Its Components for the Harari People Regional State
December 2006 = 100

ወርና ዓመት	ጠቅላላ ኢንዱስትሪ General Index	ጠቅላላ ምግብ ኢንዱስትሪ Food Total	ጠቅላላ ምግብ ካልሆኑ ኢንዱስትሪ Non-Food Total	Non-food Consumer Price Index Components										Month and Year	
				መጠጥ Beverages	ቢዳራና ትምባህ Cigarettes and Tobacco	ልብና መጓጊያ Clothing and Footwear	የቤት ኪራይ፣ የቤት መሥሪያ ስቃዎች፣ውሃ፣ ነጻጅና ነጻይል House Rent, Construction Materials, Water, and Fuel and Power	የቤት ስቃዎች የቤት ማስገቢያዎች የቤት ቁሳቁስና የቤት ሠራተኛ ደመወዝ Furniture, Furnishings, Household Equipment and Operation	ሕክምና Medical Care and Health	ትራንስፖርትና መገናኛ Transport and Communication	መዝናኛና ትምህርት Recreation, Entertainment and Education	የግል ንጹህናና የግል ጽግ ስቃዎች Personal Care and Effects	ሌሎች ስቃዎች Miscellaneous Goods		
ታህሳስ 1999	100.0	100.0	100.0	100.0	100.0	100.0	100.0	100.0	100.0	100.0	100.0	100.0	100.0	100.0	December 2006
ጥር 1999	101.4	102.5	100.4	104.1	100.0	100.2	100.6	98.8	100.9	100.0	100.2	102.1	100.0	100.0	January 2007
የካቲት 1999	98.9	100.9	97.0	102.0	103.4	91.8	96.3	97.5	100.9	100.0	100.3	100.5	100.0	100.0	February "
መጋቢት 1999	101.1	104.8	97.6	107.1	101.1	92.5	97.8	97.7	103.4	100.0	97.1	101.8	98.3	98.3	March "
ጊያዝያ 1999	99.9	102.5	97.4	102.5	101.1	92.1	96.5	99.6	99.8	100.0	100.2	104.5	98.9	98.9	April "
ግንቦት 1999	101.0	103.4	98.7	102.5	101.1	96.2	98.7	96.2	99.8	100.0	101.3	105.6	98.9	98.9	May "
ሰኔ 1999	101.5	103.9	99.3	105.2	103.4	95.8	98.9	98.1	99.8	100.0	102.1	106.6	99.4	99.4	June "
2000															2007/2008
ሐምሌ 1999	103.9	107.9	100.1	102.5	104.5	95.4	101.5	99.1	99.8	100.0	101.2	109.0	99.4	99.4	July "
ክሐሴ 1999	107.7	114.9	101.0	107.2	104.5	97.6	101.6	100.7	100.7	100.0	100.5	109.7	99.4	99.4	August "
መስከረም 2000	108.3	115.6	101.5	107.6	104.5	97.0	101.6	104.0	101.6	100.0	101.3	111.6	100.0	100.0	September "
ጥቅምት 2000	109.5	116.5	102.9	107.6	104.5	101.4	101.6	105.2	101.0	100.0	104.1	114.4	100.0	100.0	October "
ኅዳር 2000	108.5	114.8	102.6	107.6	104.5	101.5	101.6	105.1	102.8	100.0	100.4	114.2	100.0	100.0	November "
ታህሳስ 2000	110.0	116.4	104.0	108.6	104.5	114.4	97.7	104.6	102.4	100.0	100.6	113.4	100.0	100.0	December "

Revised from January 2007 - November 2007

ሠንጠረዥ 9ለ፡- ጠቅላላ የምግብና የምግብ ክፍሎች የ ሽግግር ዋጋ መመዘኛ ኢንዱስትሪ ለሐረር ሀዘብ ክልል መገንጠያ
 ታህሳስ 1999 = 100

Table 9b: Consumer Price Index of Total Food and Its Components for the Harari People Regional State
 December 2006 = 100

ወርና ዓመት	ጠቅላላ ምግብ	FOOD TAKEN AT HOME											ከቤት ውጭ የተወሰዱ ምግቦች	ክብት ወ-ጧ	Month and Year		
		እህል	ጥራጥራ	ዳቦና ሌሎች የተዘጋጁ ምግቦች	ሥጋ	ወተት+ ዓይብና እንቁላል	ዘይትና ቅባቶች	አትክልትና ፍራፍራ	ቅመግ ቅመም	ድንችና ሌሎች ሥራሥሮች	ያልተቆላ ቡናና ሻይ ቅጠል	ሌሎች ምግቦች				የግብረ-ጫ አገልግሎት	
ታህሳስ 1999	100.0	100.0	100.0	100.0	100.0	100.0	100.0	100.0	100.0	100.0	100.0	100.0	100.0	100.0	100.0	100.0	December 2006
ጥር 1999	102.5	101.1	100.3	101.6	101.2	100.7	100.5	138.2	103.5	98.9	99.7	100.3	100.0	100.0	100.0	100.0	January 2007
የካቲት 1999	100.9	99.5	105.5	90.7	101.0	97.9	101.0	136.9	112.9	98.9	99.5	98.8	100.0	101.5	101.5	101.5	February "
መጋቢት 1999	104.8	102.2	106.5	92.1	101.4	98.4	113.6	138.3	204.9	111.1	99.6	96.9	100.0	106.2	106.2	106.2	March "
ሚያዝያ 1999	102.5	100.7	107.4	90.8	106.2	101.8	114.5	148.9	190.1	111.1	85.7	95.7	100.0	109.3	109.3	109.3	April "
ግንቦት 1999	103.4	102.2	119.6	92.4	100.3	106.4	114.6	148.2	186.7	111.1	86.6	92.5	100.0	109.3	109.3	109.3	May "
ሰኔ 1999	103.9	103.0	118.4	94.5	95.1	112.7	110.8	150.8	206.4	106.1	86.7	91.8	100.0	107.3	107.3	107.3	June "
2000																	2007/2008
ሐምሌ 1999	107.9	105.7	118.5	94.9	101.2	112.0	127.2	168.8	244.1	106.1	87.8	92.6	100.0	109.2	109.2	109.2	July "
ክሐሴ 1999	114.9	111.6	121.4	102.1	110.8	113.1	134.3	168.4	335.7	111.1	94.6	95.8	100.0	112.8	112.8	112.8	August "
መስከረም 2000	115.6	111.9	122.9	101.8	113.2	114.9	139.8	170.1	324.1	111.1	94.5	99.2	100.0	113.8	113.8	113.8	September "
ጥቅምት 2000	116.5	114.9	121.3	101.6	106.8	114.4	141.7	166.4	321.0	111.1	97.0	98.2	100.0	114.6	114.6	114.6	October "
ኅዳር 2000	114.8	112.9	121.1	103.0	103.8	110.9	141.8	181.1	242.4	111.1	96.8	95.8	100.0	113.5	113.5	113.5	November "
ታህሳስ 2000	116.4	112.8	120.4	102.2	106.8	112.9	156.6	179.2	285.7	116.7	96.3	96.6	100.0	113.5	113.5	113.5	December "

Revised from January 2007 - November 2007

ሠንጠረዥ 100:- ጠቅላላ የ ሽንት ጥጋ መመዘኛ ኢንዱስትሪ ቢሥሩ የተካተቱ ክፍሎች ለአርጋያ ክልል መገንጠያ
 ታህሳስ 1999 = 100

Table 10a: General Consumer Price Index and Its Components for the Oromiya Regional State
 December 2006 = 100

ወርና ዓመት	ጠቅላላ ኢንዱስትሪ	ጠቅላላ የምግብ ኢንዱስትሪ	ጠቅላላ የምግብ ካልኢንዱስትሪ	Non-food Consumer Price Index Components										Month and Year	
				መጠጥ	ቢዳራና ትምባሆ	ልሳሳና መጫሚያ	የቤት ኪራይ፣ የቤት መሥሪያ ስቃዎች፣ውሃ፣ ንጻጅናሃይል	የቤት ስቃዎች የቤት ግብዓቶች የቤት ቁሳቁስና የቤት ሠራተኛ ደመወዝ	ሕክምና	ትራንስፖርትና መገናኛ	መዝናኛና ትምህርት	የግል ንጽባናና የግል ጽግዳ ስቃዎች	ሌሎች ስቃዎች		
ታህሳስ 1999	100.0	100.0	100.0	100.0	100.0	100.0	100.0	100.0	100.0	100.0	100.0	100.0	100.0	100.0	December 2006
ጥር 1999	100.8	100.6	101.1	101.1	102.2	101.8	100.8	101.9	99.3	100.1	100.4	100.8	100.0	100.0	January 2007
የካቲት 1999	102.3	102.4	102.1	103.1	102.9	103.6	101.9	102.3	100.6	98.5	100.5	100.7	100.0	100.0	February "
መጋቢት 1999	104.7	105.4	103.5	102.9	102.8	106.9	103.1	104.7	106.3	98.9	99.9	100.7	100.0	100.0	March "
ሚያዝያ 1999	106.7	108.3	104.5	109.9	101.8	108.1	102.6	106.5	106.5	99.6	99.4	101.0	100.0	100.0	April "
ግንቦት 1999	106.5	107.5	105.2	105.1	102.1	107.5	105.0	108.2	106.7	99.3	99.4	103.2	100.0	100.0	May "
ሰኔ 1999	107.5	109.2	105.0	104.4	101.7	107.0	105.0	108.3	105.0	99.6	99.7	103.3	100.0	100.0	June "
2000															2007/2008
ሐምሌ 1999	109.7	112.4	105.9	105.0	102.0	109.0	105.5	110.2	100.9	99.8	99.2	105.4	100.0	100.0	July "
ነሐሴ 1999	112.1	116.4	105.9	104.9	103.0	108.9	105.3	110.5	102.6	99.6	100.6	105.4	100.0	100.0	August "
መስከረም 2000	114.3	119.2	107.4	104.7	101.9	112.3	105.4	114.3	103.0	99.8	104.5	107.4	101.3	101.3	September "
ኅዳር 2000	116.6	122.9	107.4	105.4	100.9	114.0	104.6	113.3	102.6	100.6	106.1	106.7	101.6	101.6	October "
ገዳር 2000	117.4	123.1	109.3	108.0	101.3	116.2	106.6	115.7	106.8	102.5	105.5	106.4	101.4	101.4	November "
ታህሳስ 2000	119.2	125.9	109.5	109.9	100.7	116.0	106.5	118.1	105.5	100.0	105.4	107.1	98.0	98.0	December "

Revised from January 2007 - November 2007

ወንጠረዥ 10ለ፡- ጠቅላላ የምግብና የምግብ ክፍሎች የሽያጭ ዋጋ መመዘኛ ሊገደብን ለአርግጦ ክልላዊ መንግሥት
 ታህሳስ 1999 = 100

Table 10b: Consumer Price Index of Total Food and Its Components for the Oromiya Regional State
 December 2006 = 100

ወርና ዓመት	ጠቅላላ የምግብ	Cereals	FOOD TAKEN AT HOME											ከቤት ውጪ የተወለዱ የምግቦች	Month and Year	
			Pulses	Bread and other Prepared Food	Meat	Milk, Cheese and Egg	Oils and Fats	Vegetables and Fruits	Spices	Potatoes, Tubers and Stems	Coffee (beans, whole) and Tea Leaves	Other Food Items	Milling Charges			
ታህሳስ 1999	100.0	100.0	100.0	100.0	100.0	100.0	100.0	100.0	100.0	100.0	100.0	100.0	100.0	100.0	100.0	December 2006
ጥር 1999	100.6	99.4	99.5	105.5	100.3	100.5	105.2	98.1	109.7	101.0	99.7	101.3	105.0	101.0	101.0	January 2007
ፀሐይ 1999	102.4	98.7	110.8	107.6	102.9	100.1	106.7	103.1	126.1	106.1	99.7	94.7	106.6	105.8	105.8	February "
መጋቢት 1999	105.4	97.4	111.3	112.3	103.8	100.8	108.4	111.7	210.1	111.5	103.1	94.4	116.7	101.4	101.4	March "
ሚያዝያ 1999	108.3	98.6	112.8	117.7	107.9	106.2	116.3	116.8	220.4	117.5	103.6	97.8	116.8	104.2	104.2	April "
ግንቦት 1999	107.5	99.2	111.8	120.3	103.8	104.3	118.3	110.4	221.7	110.0	103.0	96.8	111.9	105.0	105.0	May "
ሰኔ 1999	109.2	100.4	111.3	105.9	109.0	102.9	121.2	114.6	264.4	105.9	105.8	96.8	111.8	107.6	107.6	June "
2000																2007/2008
ሐምሌ 1999	112.4	102.8	114.3	121.9	108.8	104.1	125.0	111.4	275.1	107.2	111.2	99.1	111.2	115.6	115.6	July "
ኔሐሴ 1999	116.4	104.4	115.6	123.4	110.8	104.0	129.1	113.3	377.1	107.4	114.3	97.0	112.1	115.0	115.0	August "
መስከረም 2000	119.2	107.8	114.0	131.2	114.0	101.8	130.0	111.1	413.8	112.8	115.0	91.5	112.0	116.2	116.2	September "
ጥቅምት 2000	122.9	113.9	114.7	130.8	107.7	104.8	140.8	117.4	424.1	112.1	116.2	92.2	112.4	115.5	115.5	October "
ኅዳር 2000	123.1	114.5	115.4	134.9	112.9	104.7	145.4	132.1	332.8	115.6	123.1	95.4	112.7	115.4	115.4	November "
ታህሳስ 2000	125.9	118.6	117.0	133.6	113.3	108.8	146.5	143.6	337.8	120.9	118.4	94.4	114.5	118.4	118.4	December "

Revised from January 2007 - November 2007

ሠንጠረዥ 11ሀ፡- ጠቅላላ የ ሽግግሮች ዋጋ መመዘኛ ኢንዱክስ በሥራ የተካተቱ ክፍሎች ለደብዳቤ ክልላዊ መንግሥት
 ታህሳስ 1999 = 100

Table 11a: General Consumer Price Index and Its Components for the SNNP Regional State
 December 2006= 100

ወርና ዓመት	ጠቅላላ ኢንዱክስ General Index	ጠቅላላ ምግብ ኢንዱክስ Food Total	ጠቅላላ ምግብ ካልተካተተ ኢንዱክስ Non-Food Total	ምግብ ካልተካተተ የኢንዱክስ ክፍሎች Non-food Consumer Price Index Components										Month and Year	
				መጠጥ Beverages	ሲጃራና ትምባሆ Cigarettes and Tobacco	ልሳሳና መጫጫያ Clothing and Footwear	የቤት ኪራይ፣ የቤት መሥሪያ ስቃዎች፣ውሃ፣ ንግድናሃይል House Rent, Construction Materials, Water, and Fuel and Power	የቤት ስቃዎች የቤት ግንባታዎች የቤት ቁሳቁስና የቤት ሠራተኞች ደመወዝ Furniture, Furnishings, Household Equipment and Operation	ሕክምና Medical Care and Health	ትራንስፖርትና መገናኛ Transport and Communication	መዝናኛና ትምህርት Recreation, Entertainment and Education	የግል ንጽህናና የግል ጽግዳ ስቃዎች Personal Care and Effects	ሌሎች ስቃዎች Miscellaneous Goods		
ታህሳስ 1999	100.0	100.0	100.0	100.0	100.0	100.0	100.0	100.0	100.0	100.0	100.0	100.0	100.0	100.0	December 2006
ጥር 1999	100.4	100.2	100.8	97.4	95.6	101.3	100.3	105.5	109.2	100.0	99.9	96.5	102.3	100.0	January 2007
የካቲት 1999	100.7	99.4	102.4	101.1	96.5	102.4	98.9	116.6	110.1	112.6	102.0	98.7	100.0	100.0	February "
መጋቢት 1999	101.5	100.0	103.5	106.0	95.4	103.2	100.0	115.1	115.2	112.8	102.5	97.4	101.1	101.1	March "
ጊዳር 1999	103.1	102.2	104.2	107.1	96.5	105.0	100.3	115.2	115.8	112.8	104.5	96.6	101.1	101.1	April "
ግንቦት 1999	103.8	102.7	105.4	109.7	95.4	104.9	102.1	117.2	113.7	113.1	102.2	99.9	101.1	101.1	May "
ሰኔ 1999	105.5	105.0	106.2	114.6	94.9	104.9	102.4	118.1	114.5	112.5	102.9	100.0	101.1	101.1	June "
2000															2007/2008
ሐምሌ 1999	107.2	108.3	105.6	108.9	95.4	106.5	101.1	120.1	116.1	113.2	102.8	101.2	101.1	101.1	July "
ነሐሴ 1999	108.9	110.1	107.3	109.5	96.1	108.0	103.6	119.5	119.9	113.3	106.4	100.9	103.4	103.4	August "
መስከረም 2000	110.9	112.8	108.2	110.7	95.6	111.2	103.2	120.9	120.4	115.1	106.6	102.5	105.7	105.7	September "
ጥቅምት 2000	113.4	114.6	111.7	111.8	95.4	111.2	110.0	126.5	119.3	112.1	107.3	103.3	105.7	105.7	October "
ገዳር 2000	113.6	114.2	112.7	112.4	95.8	113.1	110.9	129.9	110.4	113.0	106.9	101.4	106.9	106.9	November "
ታህሳስ 2000	115.3	117.0	113.0	114.5	94.4	116.2	110.5	126.5	116.2	113.3	101.9	103.6	106.9	106.9	December "

Revised from January 2007 - November 2007

ሠንጠረዥ 11A:- ጠቅላላ የምግብ ክፍሎች የ ሽያጭ ዋጋ መመዘኛ ኢንዱስትሪ ለደብዳቤ ክልላዊ መንግሥት ታህሳስ 1999 = 100

Table 11b: Consumer Price Index of Total Food and Its Components for the SNNP Regional State December 2006 = 100

ወርና ዓመት	ጠቅላላ የምግብ	Cereals	FOOD TAKEN AT HOME											ከቤት ውጪ የተወለዱ የምግቦች	Month and Year	
			Pulses	Bread and other Prepared Food	Meat	Milk,Cheese and Egg	Oils and Fats	Vegetables and Fruits	Spices	Potatoes, Other Tubers and Stems	Coffee (beans, whole) and Tea Leaves	Other Food Items	Milling Charges			Food taken away from home
ታህሳስ 1999	100.0	100.0	100.0	100.0	100.0	100.0	100.0	100.0	100.0	100.0	100.0	100.0	100.0	100.0	100.0	December 2006
ጥር 1999	100.2	98.4	100.8	100.4	101.4	98.9	100.7	104.5	111.8	100.1	100.2	100.5	101.1	99.8	100.0	January 2007
ፀደቅ 1999	99.4	96.4	102.3	102.3	102.6	101.4	102.6	102.2	109.4	99.0	99.8	101.7	102.1	100.0	100.0	February "
መጋቢት 1999	100.0	94.5	103.8	103.1	105.0	100.0	106.3	105.7	161.2	94.8	104.0	104.6	102.7	98.7	100.0	March "
ሚያዝያ 1999	102.2	97.8	106.5	102.3	112.0	100.8	108.9	106.8	169.5	92.0	103.6	106.2	103.2	108.4	100.0	April "
ግንቦት 1999	102.7	97.3	109.3	105.8	109.3	107.5	111.3	103.1	188.4	91.6	104.4	103.1	108.3	107.5	100.0	May "
ሰኔ 1999	105.0	98.2	109.4	107.9	108.2	107.8	112.5	104.0	190.6	98.8	106.8	104.3	106.9	111.0	100.0	June "
2000																2007/2008
ሐምሌ 1999	108.3	101.8	113.9	112.5	109.9	107.9	114.7	101.4	219.0	100.5	117.7	100.5	100.8	111.6	100.0	July "
ኔሐሴ 1999	110.1	104.7	116.7	112.7	111.5	108.3	118.8	103.4	219.5	101.6	118.7	101.8	100.0	111.7	100.0	August "
መስከረም 2000	112.8	108.1	117.4	114.5	114.7	108.3	125.0	106.5	246.5	99.5	125.3	103.0	101.5	112.6	100.0	September "
ጥቅምት 2000	114.6	109.6	118.7	115.6	114.3	115.0	128.6	120.4	299.5	99.2	124.3	101.6	101.1	98.4	100.0	October "
ኅዳር 2000	114.2	110.0	119.4	117.2	115.2	113.6	130.8	121.0	247.1	100.9	126.6	100.3	101.2	98.7	100.0	November "
ታህሳስ 2000	117.0	112.3	118.7	116.7	116.2	114.0	133.9	125.2	247.4	108.2	129.4	99.6	100.4	99.8	100.0	December "

Revised from January 2007 - November 2007

ወንጠራዥ 12ሁ-ጠቅላላ የ ሽግግር የጋ መመዘኛ ኢንዱስትሪ ቢሮ የተካተቱ ክፍሎች ለሰጧ ክልል መገንባት
 ታህሳስ 1999 = 100

Table 12a: General Consumer Price Index and Its Components for the Somali Regional State
 December 2006 = 100

ወርና ዓመት	ጠቅላላ ኢንዱስትሪ General Index	ጠቅላላ የምግብ ኢንዱስትሪ Food Total	ጠቅላላ የምግብ ካል-ኢንዱስትሪ Non-Food Total	Non-food Consumer Price Index Components										Month and Year	
				መጠጥ Beverages	ቢዳራና ትምባሆ Cigarettes and Tobacco	ልሳሰና መጓጃያ Clothing and Footwear	የቤት ኪራይ፣ የቤት መሥሪያ ስቃዎች፣ውሃ፣ ነዳጅና ነገል House Rent, Construction Materials, Water, and Fuel and Power	የቤት ስቃዎች የቤት ግንቢያዎች የቤት ቁሳቁስና የቤት ሠራተኛ ደመወዝ Furniture, Furnishings, Household Equipment and Operation	ሕክምና Medical Care and Health	ትራንስፖርትና መገናኛ Transport and Communication	መዝናኛና ትምህርት Recreation, Entertainment and Education	የግል ንጽህናና የግል ጽግ ስቃዎች Personal Care and Effects	ሌሎች ስቃዎች Miscellaneous Goods		
ታህሳስ 1999	100.0	100.0	100.0	100.0	100.0	100.0	100.0	100.0	100.0	100.0	100.0	100.0	100.0	100.0	December 2006
ጥር 1999	101.0	101.6	100.2	103.9	100.0	101.1	101.3	95.2	101.1	99.4	97.7	98.9	100.0	100.0	January 2007
የካቲት 1999	101.7	101.8	101.4	102.6	102.6	103.4	102.1	98.6	98.8	99.1	97.5	97.5	95.8	95.8	February "
መጋቢት 1999	101.9	103.0	100.1	102.2	102.6	99.0	101.8	98.3	103.7	96.9	96.8	94.7	91.7	91.7	March "
ሚያዝያ 1999	101.2	102.0	99.9	105.4	100.2	101.1	99.4	99.5	104.3	97.6	99.0	96.2	95.8	95.8	April "
ግንቦት 1999	101.5	101.9	100.8	105.4	102.6	101.5	100.7	100.2	102.4	99.8	98.4	96.9	95.8	95.8	May "
ሰኔ 1999	102.6	102.3	102.9	105.4	102.6	104.4	103.0	99.4	125.7	99.6	99.5	98.2	95.8	95.8	June "
2000															2007/2008
ሐምሌ 1999	103.9	105.0	102.2	104.0	102.6	103.4	102.2	99.4	122.7	99.5	96.5	97.8	95.8	95.8	July "
ክለሌ 1999	107.3	109.3	104.0	104.1	109.0	104.1	104.2	100.8	125.6	99.5	97.8	98.0	95.8	95.8	August "
መስከረም 2000	107.4	110.7	101.9	102.2	109.0	101.7	100.2	98.0	129.7	101.6	99.0	100.2	100.0	100.0	September "
ጥቅምት 2000	110.1	113.0	105.4	105.0	112.3	103.0	106.5	102.5	134.4	96.0	96.3	97.7	102.1	102.1	October "
ኅዳር 2000	109.6	112.2	105.3	105.8	112.3	110.4	102.1	100.6	132.7	101.6	98.3	99.1	99.8	99.8	November "
ታህሳስ 2000	109.4	111.5	106.1	108.8	109.0	109.6	104.8	100.7	133.9	99.8	100.4	100.8	102.2	102.2	December "

Revised from January 2007 - November 2007

ሠንጠረዥ 12ለ፡- ጠቅላላ ምግብና የምግብ ክፍሎች የ ሸጭች ዋጋ መመዘኛ ኢንዱስትሪ ስራዎች ክፍል ወገን ምድር ጋራ 1999 = 100

Table 12b: Consumer Price Index of Total Food and Its Components for the Somali Regional State December 2006 = 100

ወርና ዓመት	ጠቅላላ ምግብ	FOOD TAKEN AT HOME											ከቤት ውጭ የተወሰዱ ምግቦች	Month and Year		
		እህል	ጥራጥራ	ዳቦና ሌሎች የተዘጋጁ ምግቦች	ሥጋ	ወተት+ ዓይብና እንቁላል	ዘይትና ቅባቶች	አትክልትና ፍራፍራ	ቅመም ቅመም	ድንችና ሌሎች ሥራሥሮች	ያልተቆላ ቡናና ሻይ ቅጠል	ሌሎች ምግቦች			የግብረጫ አገልግሎት	
	Food Total	Cereals	Pulses	Bread and other Prepared Food	Meat	Milk,Cheese and Egg	Oils and Fats	Vegetables and Fruits	Spices	Potatoes, Other Tubers and Stems	Coffee (beans, whole) and Tea Leaves	Other Food Items	Milling Charges	Food taken away from home		
ጋራ 1999	100.0	100.0	100.0	100.0	100.0	100.0	100.0	100.0	100.0	100.0	100.0	100.0	100.0	100.0	100.0	December 2006
ጥር 1999	101.6	104.1	103.1	99.7	100.8	98.6	96.4	100.6	100.0	103.0	101.5	100.3	100.0	100.8	100.0	January 2007
የካቲት 1999	101.8	106.1	100.4	101.6	101.6	97.7	99.7	99.7	100.0	103.0	97.8	100.5	100.0	100.9	100.0	February "
መጋቢት 1999	103.0	105.1	103.8	101.3	101.9	101.4	98.6	115.5	166.7	103.0	100.6	95.4	106.9	101.8	100.0	March "
ሚያዝያ 1999	102.0	103.6	103.8	104.5	101.8	96.1	98.9	109.8	188.9	103.0	100.6	96.6	103.1	100.0	100.0	April "
ግንቦት 1999	101.9	106.4	102.6	105.5	101.0	86.2	99.4	123.4	166.7	103.0	99.3	94.5	94.7	107.8	100.0	May "
ሰኔ 1999	102.3	104.9	102.8	104.9	103.9	86.4	99.7	118.3	250.0	101.7	100.1	93.3	98.2	114.3	100.0	June "
2000																2007/2008
ሐምሌ 1999	105.0	107.7	109.9	104.1	105.1	85.0	105.3	118.5	250.0	102.2	107.3	95.0	98.2	115.0	100.0	July "
ክለሌ 1999	109.3	113.4	111.2	106.8	114.3	91.4	108.3	116.9	333.3	102.0	105.3	97.1	97.6	120.8	100.0	August "
መስከረም 2000	110.7	115.2	111.2	109.2	114.4	90.1	113.7	119.1	416.7	100.7	105.2	95.6	98.2	118.3	100.0	September "
ጥቅምት 2000	113.0	117.4	115.5	108.3	136.6	91.7	128.6	118.9	416.7	99.1	102.8	98.3	96.3	116.0	100.0	October "
ኅዳር 2000	112.2	123.2	116.2	110.3	120.1	90.2	132.8	117.7	250.0	98.7	102.9	87.6	100.0	113.7	100.0	November "
ጋራ 2000	111.5	118.7	115.4	114.1	122.6	91.7	135.5	118.0	250.0	106.9	103.3	89.1	100.8	114.1	100.0	December "

Revised from January 2007 - November 2007

ወንጠረዥ 13ሀ፡- ጠቅላላ የ ሽግግር ዋጋ መመዘኛ ኢንዱስትሪ ቢሮ የተካተቱ ክፍሎች ለትግራይ ክልል መገንጠያ
 ታህሳስ 1999 = 100

Table 13a: General Consumer Price Index and Its Components for the Tigray Regional State

December 2006 = 100

ወርና ዓመት	ጠቅላላ ኢንዱስትሪ	ጠቅላላ የምግብ ኢንዱስትሪ	ጠቅላላ የምግብ ካልሆኑ ኢንዱስትሪ	Non-food Consumer Price Index Components										Month and Year
				መጠጥ	ቢዳራና ትምባሆ	ልሳሳና መጫሚያ	የቤት ኪራይ፣ የቤት መሥሪያ ስቃዎች፣ውሃ፣ ንጃኛናሃይል	የቤት ስቃዎች የቤት ግንባታዎች የቤት ቁሳቁስና የቤት ሠራተኞች ደመወዝ	ሕክምና	ትራንስፖርትና መገናኛ	መዝናኛና ትምህርት	የግል ንጽህናና የግል ቋሚ ስቃዎች	ሌሎች ስቃዎች	
	General Index	Food Total	Non-Food Total	Beverages	Cigarettes and Tobacco	Clothing and Footwear	House Rent, Construction Materials, Water, and Fuel and Power	Furniture, Furnishings, Household Equipment and Operation	Medical Care and Health	Transport and Communication	Recreation, Entertainment and Education	Personal Care and Effects	Miscellaneous Goods	
ታህሳስ 1999	100.0	100.0	100.0	100.0	100.0	100.0	100.0	100.0	100.0	100.0	100.0	100.0	100.0	December 2006
ጥር 1999	100.8	101.5	99.9	99.9	100.0	98.2	98.7	101.6	108.3	100.0	104.5	102.5	104.5	January 2007
የካቲት 1999	101.3	101.9	100.6	98.5	101.1	104.6	97.4	101.6	106.6	96.7	100.0	104.6	104.5	February "
መጋቢት 1999	103.9	105.5	101.6	99.3	97.5	106.7	98.9	102.3	105.8	94.5	103.8	102.3	104.5	March "
ሚያዝያ 1999	105.1	107.0	102.4	99.8	100.0	109.3	98.8	103.1	106.2	95.9	99.9	101.3	108.5	April "
ግንቦት 1999	106.7	109.6	102.7	100.4	100.0	106.0	100.7	104.1	106.7	94.2	101.9	102.6	109.7	May "
ሰኔ 1999	108.8	111.1	105.5	100.1	100.5	111.8	104.2	104.0	106.3	95.7	100.2	101.2	112.4	June "
2000														2007/2008
ሐምሌ 1999	110.3	114.7	104.3	98.3	103.6	113.0	99.2	107.8	106.2	95.7	99.6	104.6	112.4	July "
ነሐሴ 1999	115.5	122.7	105.5	100.1	101.6	113.7	101.7	106.8	107.4	95.6	101.0	104.9	112.4	August "
መስከረም 2000	121.4	131.5	107.5	103.5	101.6	117.8	102.2	110.9	108.9	95.5	106.3	107.1	113.1	September "
ኅዳር 2000	125.7	134.0	114.2	101.9	96.5	118.7	117.8	113.7	103.9	93.6	103.9	108.0	115.9	October "
ግዳር 2000	120.1	129.8	106.7	99.3	96.8	117.1	102.2	114.7	103.8	93.1	105.1	94.6	113.9	November "
ታህሳስ 2000	120.7	130.8	106.7	97.1	96.9	114.0	103.6	116.0	103.0	93.1	106.1	97.5	112.7	December "

Revised from January 2007 - November 2007

ሠንጠረዥ 13ለ፡- ጠቅላላ የምግብ ክፍሎች የ ሽግግር ዋጋ መመዘኛ ኢንዱስትሪ ለትግራይ ክልል መንግሥት ታህሳስ 1999 = 100

Table 13b: Consumer Price Index of Total Food and Its Components for the Tigray Regional State December 2006 = 100

ወርና ዓመት	ጠቅላላ ምግብ	Cereals	FOOD TAKEN AT HOME											ከቤት ውጪ የተወለዱ ምግቦች	Month and Year	
			Pulses	Bread and other Prepared Food	Meat	Milk, Cheese and Egg	Oils and Fats	Vegetables and Fruits	Spices	Potatoes, Other Tubers and Stems	Coffee (beans, whole) and Tea Leaves	Other Food Items	Milling Charges			
ታህሳስ 1999	100.0	100.0	100.0	100.0	100.0	100.0	100.0	100.0	100.0	100.0	100.0	100.0	100.0	100.0	100.0	December 2006
ጥር 1999	101.5	102.0	100.2	106.0	99.9	102.5	101.7	105.5	102.4	95.2	100.5	99.1	98.5	99.9	99.9	January 2007
የካቲት 1999	101.9	100.9	101.7	104.1	100.8	103.1	106.5	109.2	111.7	96.9	99.9	97.7	98.5	100.0	100.0	February "
መጋቢት 1999	105.5	101.9	105.6	107.0	95.7	101.0	118.6	108.5	166.5	112.8	101.3	96.4	101.4	100.1	100.1	March "
ሚያዝያ 1999	107.0	99.7	111.1	108.6	113.9	100.8	123.1	110.8	175.7	112.8	100.8	97.5	104.9	98.5	98.5	April "
ግንቦት 1999	109.6	100.4	110.6	104.7	113.1	107.4	126.6	104.3	209.9	112.8	98.1	99.7	111.2	107.4	107.4	May "
ሰኔ 1999	111.1	101.6	109.7	104.8	115.0	109.6	122.5	109.0	224.1	102.2	98.5	100.6	117.1	106.0	106.0	June "
2000																2007/2008
ሐምሌ 1999	114.7	104.3	113.5	107.9	117.1	107.1	124.4	118.1	250.9	103.5	101.2	97.9	110.6	107.3	107.3	July "
ክሌሴ 1999	122.7	109.1	114.6	110.8	118.7	108.3	132.4	130.9	338.0	103.6	106.6	98.1	110.9	107.8	107.8	August "
መስከረም 2000	131.5	114.3	121.2	111.3	122.6	110.3	146.0	139.8	404.5	113.7	114.1	96.2	113.5	119.1	119.1	September "
ጥቅምት 2000	134.0	116.6	124.8	118.0	119.5	110.0	148.6	149.3	410.9	123.8	122.7	96.0	110.7	120.1	120.1	October "
ኅዳር 2000	129.8	115.6	125.8	119.0	120.0	109.9	146.4	140.7	338.3	126.6	122.8	95.1	110.9	121.5	121.5	November "
ታህሳስ 2000	130.8	117.8	126.5	119.8	120.6	110.8	149.5	139.3	322.9	124.2	126.7	97.4	111.8	123.7	123.7	December "

Revised from January 2007 - November 2007