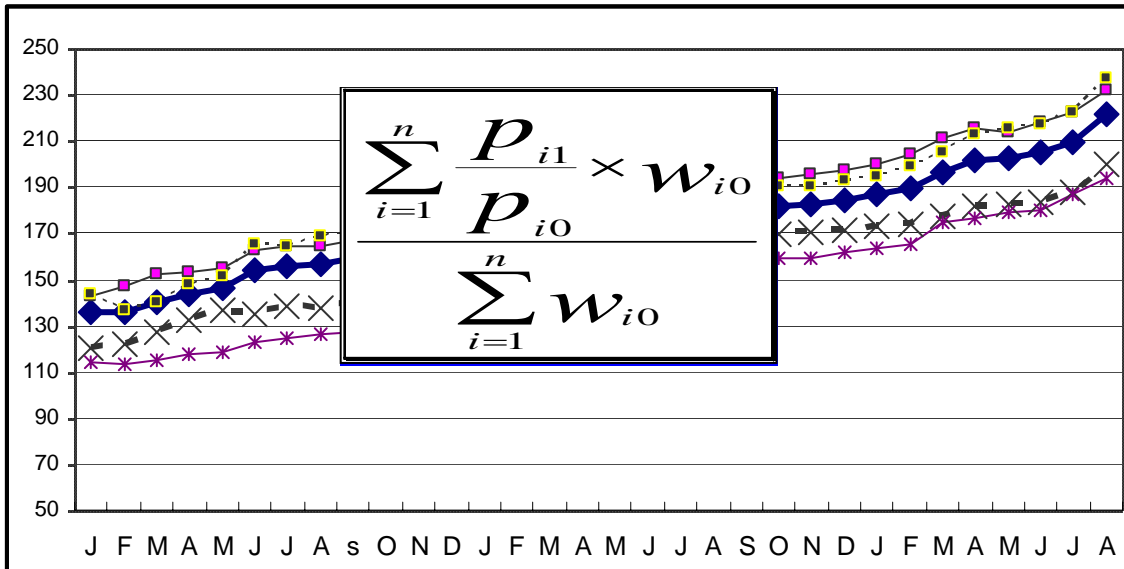


በኢትዮጵያ ፌዴራላዊ ዲሞክራሲያዊ ሪፐብሊክ
 የማዕከላዊ ስታቲስቲክስ ኤጀንሲ

THE FEDERAL DEMOCRATIC REPUBLIC OF ETHIOPIA
CENTRAL STATISTICAL AGENCY

የአገር አቀፍና የክልሎች የሽማግሌት ዋጋ መመዘኛ ኢንዱክሶች
 የጥር ወር 2001 ዓ.ም.
 [ታህሳስ 1999 = 100]
 መረጃ ቁጥር 16

COUNTRY AND REGIONAL LEVEL CONSUMER PRICE INDICES



[December 2006 =100]
 For the month of January 2009
 Information No. 16

Tel: 251-11-1 553011
 Fax: 251-11-1550334.
 Email: csa@ethionet.et

አዲስ አበባ
 የካቲት 2 ቀን 2001 ዓ.ም.
 ADDIS ABABA
 9 February 2009

CONTENTS

	Page
Introduction.....	4
Inflation Rate.....	8
Comparison of CPI Movements, Current Vs Last Year's Similar Months, at country Level.....	10
Comparison of CPI Movements, Current Vs Last Year's Similar Months, at country and Regional Levels.....	11

List of Tables

Table a: Number of Markets Covered and Basket of Commodities by Region.....	2
Table 1a: General Consumer Price Index and Its Components at Country Level.....	13
Table 1b: Consumer Price Index of Total Food and Its Components at Country Level.....	14
Table 1c: Consumer Price Index of House Rent, Construction Materials, Water, Fuel and Power and Its Components at Country Level.....	15
Table 2a: Summary of General Consumer Price Indices at Country and Regional Levels.....	16
Table 2b: Summary of Consumer Price Indices of Food at Country and Regional Levels.....	18
Table 3a: General Consumer Price Index and Its Components for the City of Addis Ababa Administration.....	20
Table 3b: Consumer Price Index of Total Food and Its Components for the City of Addis Ababa Administration.....	21
Table 4a: General Consumer Price Index and Its Components for the Afar Regional State.....	22
Table 4b: Consumer Price Index of Total Food and Its Components for the Afar Regional State.....	23
Table 5a: General Consumer Price Index and Its	

Components for the Amhara Regional State.....	24
Table 5b: Consumer Price Index of Total Food and Its	
Components for the Amhara Regional State.....	25
Table 6a: General Consumer Price Index and Its	
Components for the Benishangul-Gumuz Regional State.....	26
Table 6b: Consumer Price Index of Total Food and Its	
Components for the Benishangul-Gumuz Regional State.....	27
Table 7a: General Consumer Price Index and Its	
Components for the Dire Dawa Administrative Council.....	28
Table 7b: Consumer Price Index of Total Food and Its	
Components for the Dire Dawa Administrative Council.....	29
Table 8a: General Consumer Price Index and Its	
Components for the Gambela Peoples Regional State.....	30
Table 8b: Consumer Price Index of Total Food and Its	
Components for the Gambela Peoples Regional State.....	31
Table 9a: General Consumer Price Index and Its	
Components for the Harari Peoples Regional State.....	32
Table 9b: Consumer Price Index of Total Food and Its	
Components for the Harari Peoples Regional State.....	33
Table 10a: General Consumer Price Index and Its	
Components for the Oromia Regional State.....	34
Table 10b: Consumer Price Index of Total Food and Its	
Components for the Oromia Regional State.....	35
Table 11a: General Consumer Price Index and Its	
Components for the SNNP Regional State.....	36
Table 11b: Consumer Price Index of Total Food and Its	
Components for the SNNP Regional State.....	37
Table 12a: General Consumer Price Index and Its	
Components for the Somali Regional State.....	38
Table 12b: Consumer Price Index of Total Food and Its	
Components for the Somali Regional State.....	39
Table 13a: General Consumer Price Index and Its	
Components for the Tigray Regional State.....	40
Table 13b: Consumer Price Index of Total Food and Its	
Components for the Tigray Regional State.....	41

Introduction

The Consumer Price Index (CPI) measures the average change in the price paid by consumers for a fixed market basket of goods and services. It is usually based on household expenditure weights of the goods and services in the basket and their current market prices. The twelve CPI's (i.e., the CPI's of the 11 Regions and the CPI at Country Level) presented in this report are based on the results of the Household Income, Consumption and Expenditure Survey (HICES) conducted by the Central Statistical Agency in 2004/2005 from which expenditure weights are derived for major household goods and services of that period and adjusted using the December 2006 retail prices of the goods and services as a base period.

The December 2006 based CPI updates the previous CPI series (i.e. December 2000 based) and the newly selected baskets are more diversified and the weights are more accurate. It also showed various improvements and incorporates non-food index as an independent group. The new series is constructed for country as a whole and Regional States including Dire Dawa and the Addis Ababa City Administration. However, similar indices had been utilized at Addis Ababa Level since 1963 and at Country, Urban and Rural Levels since 1995/96 and in Country and Regional level since 2000.

All the twelve general indices are divided into two major groups that is food and non-food index. The non-food index has ten major groups each, namely: Beverages; Cigarettes and Tobacco; Clothing and Footwear; House Rent, Construction Materials, Water, and Fuel and Power; Furniture, Furnishing, Household Equipment and Operation; Medical Care and Health; Transport and Communication; Recreation, Entertainment and Education; Personal Care and Effects; and Miscellaneous Goods and Services. On the other hand, the Food Index has 13 sub-groups. These are: Cereals; Pulses; Bread and Other Prepared Food; Meat; Milk, Cheese and Eggs; Vegetables and

Fruits; Oil and Fats Spices; Potatoes, Other Tubers and Stems; Coffee Beans (whole) and Tea Leaves; Other Food Items; Milling Charges; and Food taken Away from Home. Furthermore, the new CPI based on December 2006 includes more detailed #Housing, Construction materials, Water and Fuel and Power; components.

For the construction of the current consumer price indices, up to date data on retail prices are collected in the purposely selected sample market places located in representative urban centers in each zone/special weredas of the country. Hence, a total of 119 market places were selected for the retail price survey. In each market place an enumerator is assigned to undertaking the data collection activities. The price data is collected from the 1st day through 15th days of European Calendar month under consideration. To calculate the monthly regional consumer price indices, geometric means of prices of the specific regions are used. The distribution of the market place of each region and items included in the basket of commodities are given on Table A on page 2.

An important factor in constructing a Consumer Price Index is to select the representative basket of goods and services. Including all consumption items into the market basket of goods and services is both cumbersome and unnecessarily costly in term of data collection and processing. Furthermore, it doesn't make sense to include an insignificant weight into an index basket which could not move the price relative up or downwards compared to the general market trend. As a result, basket of goods and services included in the regional baskets are determined by expenditure cut-off point. The total numbers of items included in the regional basket in the December 2006 based indices are given in Table A on page 2.

Country level CPI aggregates the regional group indices and the contributions of the five relatively big regions in terms of the magnitude of the expenditure account for more than 95 percent. These regions are Oromiya, Amhara, SNNP, Addis Ababa and Tigray. On the other hand, the contributions of the remaining regions to the

Country Level Consumer Price Index is about five percent.

According to the weights for food and non-food groups in Table B below, the December 2006 based CPI is about 57 percent of household expenditure spent on the food component, which declined by 3 percentage points as compared to the December 2000 based CPI. On the other hand, the expenditure on non-food components increased from 40 percent to 43 percent. This indicates that the economic situation in the country is going in the right direction as postulated by economic theory. Similarly, in this period larger regions resulted in a substantial decrease in the average weights for food, despite the increased food taken out of home. It was offset mainly by an increase in housing, construction materials, water and fuel and power, furnishing and transport and communication.

Table B: Major groups in the 2000 and 2006 based CPI and their weights at Country Level

No.	Major Group	Weights	
		2000 based CPI	2006 based CPI
1	Food	0.6008	0.5701
2	Non-Food	0.3992	0.4299
3	Beverages	0.0201	0.0202
4	Cigarettes and Tobacco	0.0051	0.0048
5	Clothing and Footwear	0.0926	0.0832
6	House Rent, Construction Materials, Water and Fuel and Power	0.1544	0.2056
7	Furniture, Furnishing, Household Equipment and Operation	0.0494	0.0375
8	Medical Care and Health	0.0120	0.0111
9	Transport and Communication	0.0199	0.0249
10	Recreation, Entertainment and Education	0.0101	0.0109
11	Personal Care and Effects	0.0092	0.0083
12	Miscellaneous Goods	0.0264	0.0234
	Total	1.000	1.000

መግቢያ..... 1
 የወሩ ዋጋ ግሽበት ሁኔታ 7

የዘንድሮውና የአምናው ተመሳሳይ ወሮች የሽማቾች ዋጋ መመዘኛ ጠቋሚ አሀዝ ንፅፅር በአገር አቀፍ ደረጃ 10

የዘንድሮውና የአምናው ተመሳሳይ ወሮች የሽማቾች ዋጋ መመዘኛ ጠቋሚ አሀዝ ንፅፅር በአገር አቀፍና በክልሎች ደረጃ..... 11

የሠንጠረዦች ዝርዝር

ሠንጠረዥ ሀ፡ በጥናቱ የተሸፈኑ ገበያዎችና በኢንዱስትሪ ማዕቀፍ የተካተቱ ዕቃዎችና በዕቃዎች/አገልግሎቶች ብዛት በክልል..... 2

ሠንጠረዥ 1ሀ፡ ጠቅላላ የሽማቾች ዋጋ መመዘኛ ኤንደክስና በስሩ የተካተቱ ክፍሎች በአገር አቀፍ ደረጃ..... 13

ሠንጠረዥ 1ለ፡ ጠቅላላ ምግብና የምግብ ክፍሎች የሽማቾች ዋጋ መመዘኛ ኤንደክስ በአገር አቀፍ ደረጃ..... 14

ሠንጠረዥ 1ሐ፡ አገር አቀፍ የቤት ኪራይ፣ የቤት መስሪያ ዕቃዎች፣ ውሃና ኬነርጂ የሽማቾች ዋጋ መመዘኛ ኤንደክስ 15

ሠንጠረዥ 2ሀ፡ ጠቅላላ የሽማቾች ዋጋ መመዘኛ ኤንደክስ በአገር አቀፍና በክልሎች ደረጃ 16

ሠንጠረዥ 2ለ፡ የምግብ ዋጋ መመዘኛ ኤንደክስ ማጠቃለያ በአገር አቀፍ እና በክልሎች ደረጃ 18

ሠንጠረዥ 3ሀ፡ ጠቅላላ የሽማቾች ዋጋ መመዘኛ ኤንደክስና በስሩ የተካተቱ ክፍሎች ለአዲስ አበባ ከተማ መስተዳድር 20

ሠንጠረዥ 3ለ፡ ጠቅላላ ምግብና የምግብ ክፍሎች የሽማቾች ዋጋ መመዘኛ ኤንደክስ ለአዲስ አበባ ከተማ መስተዳድር 21

ሠንጠረዥ 4ሀ፡ ጠቅላላ የሽማቾች ዋጋ መመዘኛ ኤንደክስና በስሩ የተካተቱ ክፍሎች ለአፋር ክልላዊ መንግስት..... 22

ሠንጠረዥ 4ለ፡ ጠቅላላ ምግብና የምግብ ክፍሎች የሽማቾች ዋጋ መመዘኛ ኤንደክስ ለአፋር ክልላዊ መንግስት..... 23

ሠንጠረዥ 5ሀ፡ ጠቅላላ የሽማቾች ዋጋ መመዘኛ ኤንደክስና በስሩ የተካተቱ ክፍሎች ለአማራ ክልላዊ መንግስት..... 24

ሠንጠረዥ 5ለ፡ ጠቅላላ ምግብና የምግብ ክፍሎች የሽማቾች ዋጋ መመዘኛ ኤንደክስ ለአማራ ክልላዊ መንግስት..... 25

ሠንጠረዥ 6ሀ፡ ጠቅላላ የሽማቾች ዋጋ መመዘኛ ኤንደክስና በስሩ የተካተቱ ክፍሎች ለቤንሻንጉል-ጉሙዝ ክልላዊ መንግስት..... 26

ሠንጠረዥ 6ለ፡ ጠቅላላ ምግብና የምግብ ክፍሎች የሽማቾች ዋጋ መመዘኛ ለቤንሻንጉል-ጉሙዝ ክልላዊ መንግስት..... 27

<p>ሠንጠረዥ 7ሀ: ጠቅላላ የሸማቾች ዋጋ መመዘኛ ኤንደክስና በስሩ የተካተቱ ክፍሎች ለድሬደዋ አስተዳደር ካውንስል</p>	28
<p>ሠንጠረዥ 7ለ: ጠቅላላ ምግብና የምግብ ክፍሎች የሸማቾች ዋጋ መመዘኛ ለድሬደዋ አስተዳደር ካውንስል</p>	29
<p>ሠንጠረዥ 8ሀ: ጠቅላላ የሸማቾች ዋጋ መመዘኛ ኤንደክስና በስሩ የተካተቱ ክፍሎች ለጋምቤላ ህዝቦች ክልላዊ መንግስት</p>	30
<p>ሠንጠረዥ 8ለ: ጠቅላላ ምግብና የምግብ ክፍሎች የሸማቾች ዋጋ መመዘኛ ለጋምቤላ ህዝቦች ክልላዊ መንግስት</p>	31
<p>ሠንጠረዥ 9ሀ: ጠቅላላ የሸማቾች ዋጋ መመዘኛ ኤንደክስና በስሩ የተካተቱ ክፍሎች ለለሐረሪ ህዝብ ክልላዊ መንግስት</p>	32
<p>ሠንጠረዥ 9ለ: ጠቅላላ ምግብና የምግብ ክፍሎች የሸማቾች ዋጋ መመዘኛ ኤንደክስ ለለሐረሪ ህዝብ ክልላዊ መንግስት</p>	33
<p>ሠንጠረዥ 10ሀ: ጠቅላላ የሸማቾች ዋጋ መመዘኛ ኤንደክስና በስሩ የተካተቱ ክፍሎች ለአሮሚያ ክልላዊ መንግስት</p>	34
<p>ሠንጠረዥ 10ለ: ጠቅላላ ምግብና የምግብ ክፍሎች የሸማቾች ዋጋ መመዘኛ ኤንደክስ ለአሮሚያ ክልላዊ መንግስት</p>	35
<p>ሠንጠረዥ 11ሀ: ጠቅላላ የሸማቾች ዋጋ መመዘኛ ኤንደክስና በስሩ የተካተቱ ክፍሎች ለደ.ኢ.ብ.ብ.ሀ ክልላዊ መንግስት</p>	36
<p>ሠንጠረዥ 11ለ: ጠቅላላ ምግብና የምግብ ክፍሎች የሸማቾች ዋጋ መመዘኛ ኤንደክስ ለደ.ኢ.ብ.ብ.ሀ ክልላዊ መንግስት</p>	37
<p>ሠንጠረዥ 12ሀ: ጠቅላላ የሸማቾች ዋጋ መመዘኛ ኤንደክስና በስሩ የተካተቱ ክፍሎች ለሶማሌ ክልላዊ መንግስት</p>	38
<p>ሠንጠረዥ 12ለ: ጠቅላላ ምግብና የምግብ ክፍሎች የሸማቾች ዋጋ መመዘኛ ኤንደክስ ለሶማሌ ክልላዊ መንግስት</p>	39
<p>ሠንጠረዥ 13ሀ: ጠቅላላ የሸማቾች ዋጋ መመዘኛ ኤንደክስና በስሩ የተካተቱ ክፍሎች ለትግራይ ክልላዊ መንግስት</p>	38
<p>ሠንጠረዥ 13ለ: ጠቅላላ ምግብና የምግብ ክፍሎች የሸማቾች ዋጋ መመዘኛ</p>	41

መግቢያ

የሽማግሌዎች ዋጋ መመዘኛ ኢንዱክሽን ማለት ሽማግሌዎች ለተወሰኑ ዕቃዎችና አገልግሎቶች የከፈሉትን አማካይ የዋጋ ለውጥ ለመለካት የሚያገለግል ጠቋሚ አህዝ ነው። የዋጋ መመዘኛ ኢንዱክሽን አብዛኛውን ጊዜ መሠረት የሚያደርገው የቤተሰብ ገቢ፣ ፍጆታና ወጪ ጥናት ወጤት በሆነው ቤተሰቦች በዕቃዎችና ግልጋሎቶች ላይ ባወጡት የመቶኛ ድርሻ መጠንና የወቅቱ የገበያ ዋጋ ላይ ነው። በዚህ ሪፖርት ውስጥ የተካተቱት 12 ኢንዱክሶች (የ11 ክልሎችና የአገር አቀፍ) መሠረት ያደረጉት የማዕከላዊ ስታቲስቲክስ ኤጀንሲ በ1996/97 በጀት ዓመት በመላ አገሪቱ በናሙና በተመረጡ ቦታዎች ያካሄደውን የቤተሰብ ገቢ፣ ፍጆታና ወጪ ጥናት ወጤት ነው።

ይህ ታህሳስ ወር 1999 ዓ.ምን መሠረት ያደረገው (ታህሳስ 1999=100) የሽማግሌዎች ዋጋ መመዘኛ ኢንዱክሽን በክልል ደረጃ ሲዘጋጅ በዓይነቱ ለሁለተኛ ጊዜ የተዘጋጀ ሲሆን በታህሣሥ 1993 ዓ.ም. መሠረት ያደረገውን የሽማግሌዎች መመዘኛ ኢንዱክሽን የሚተካ ነው። በአገር አቀፍ ደረጃ ከ1988 ጀምሮና በአዲስ አበባ ከተማ ደረጃ ደግሞ ከ1955 ዓ.ም ጀምሮ በየወሩ ተመሳሳይ ኢንዱክሶች እየተዘጋጁ ለተጠቃሚዎች ሲሰራጩ መቆየታቸው ይታወቃል። እነዚህ 12 የዋጋ መመዘኛ ኢንዱክሶች በአገሪቱ የሚገኙ 11 ክልሎችና የአገር አቀፍን ሪፖርት ጨምሮ የሚሸፍነው የዕቃዎችና የአገልግሎቶችን ክምችት በያዙ ሁለት ዋና ክፍሎች የተከፈሉ ናቸው። እነሱም፡- የምግብና ምግብ ነክ ያልሆኑ መመዘኛ ኢንዱክሶች ሲሆን ምግብ ነክ ያልሆኑ መመዘኛ ኢንዱክሽን እንደገና በ10 ንዑስ ክፍሎች ይከፈላል። እነዚህም መጠጥ፣ ሲጃራና ትምባሆ፣ ልብስና መጫሚያ፣ የቤት ኪራይ፣ የቤት መሥሪያ ዕቃዎች፣ ወሃና ኢነርጂ፣ የቤት ዕቃዎች፣ የቤት ማስገጫዎች፣ የቤት ቁሳቁስና የቤት ሠራተኛ ደመወዝ፣ ሕክምና፣ መንገዥና መገናኛ፣ መዝናኛና ትምህርት፣ የግል ንጽህናና የግል ቋሚ ዕቃዎች እንዲሁም ሌሎች ዕቃዎችና አገልግሎቶች ሲሆኑ የሁሉም ክፍሎች አጠቃላይ ወጤት የሚሆነው ደግሞ የጠቅላላ ዋጋዎች መመዘኛ ኢንዱክሽን ነው።

በሁሉም ክልሎች የጠቅላላ ዋጋ መመዘኛ ኢንዱክሶች ስሌት አብዛኛውን የመቶኛ ወጪ ድርሻ የሚይዘው የምግብ መመዘኛ ኢንዱክሽን ሲሆን በሁሉም የምግብ ዋጋ መመዘኛ ኢንዱክሶች ዋና ዋና ክፍሎች እህል፣ ጥራጥሬ፣ ዳቦና ሌሎች የተዘጋጁ ምግቦች፣ ሥጋ፣ ወተት፣ ዐይብና ዕንቁላል፣ ዘይትና ቅባቶች፣ አትክልትና ፍራፍሬ፣ ቅመማ ቅመም፣ ድንችና ሌሎች ሥራሥሮች፣ ያልተቆላ ቡናና ሻይ ቅጠል፣ ሌሎች ምግቦች፣ የማስፈጫ አገልግሎትና ከቤት ወጪ የተወሰዱ ምግቦች ናቸው።

ለዋጋ ኢንዱክሶቹ የተመረጡት ዕቃዎችና አገልግሎቶች የዋጋ መረጃ የሚሰበሰበው በየዞን/ በየልዩ ወረዳ በናሙና በተመረጡ ወካይ ከተሞች ውስጥ ባሉ የገበያ ቦታዎች ነው። በመሆኑም ከእያንዳንዱ ዞን ሁለት ከተሞች (የገበያ ቦታዎች) የተመረጡ ሲሆን እንደዚሁም በእያንዳንዱ ልዩ ወረዳ አንድ ከተማ (የገበያ ቦታ) በጥናቱ እንዲካተት ተደርጓል።

በእነዚህ ከተሞች ውስጥ ተመድበው ለሚሰሩ መረጃ ሰብሳቢዎች በየበጀት ዓመቱ መጨረሻ በመረጃ አሰባሰብ ዘዴው ላይ ስልጠና የሚሰጥ ሲሆን ለአሰባሰቡ የሚረዱ የመስክ መገልገያ መሣሪያዎች (ሚዛን፣ ሜተር ... ወዘተ) ይሰጣቸዋል። እነዚህ መሣሪያዎችን በመጠቀም በየወሩ የዋጋ መረጃዎችን ከነጋዴዎች ይሰበስባሉ። አንዳንድ ጊዜም አንድ በላተኛ ወይም ገዢ ከነጋዴ ሲገዛ ቢገኝና ለሥራው ተባባሪነቱን ካሳየ መረጃው ከርሱም ይሰበስባል። የችርቻሮ ዋጋ መረጃ የሚሰበሰበው እንደ አውሮፓውያን ዘመን አቆጣጠር ወሩ በገባ ከ1ኛው ቀን አንስቶ አስከ 15ኛው ቀን ነው። የክልል ኢንዱስትሪ ለማስላት ለኢንዱስትሪ ለተመረጡት ዕቃዎችና አገልግሎቶች አማካይ የችርቻሮ ዋጋቸውን የጂኦሜትሪክ ሚን ዘዴ ጥቅም ላይ ወሎአል። የኢንዱስትሪ ሪፖርቱም በየወሩ ለተጠቃሚዎች በዚህ መልክ ይቀርባል።

የአገር አቀፍ የችርቻሮ ዋጋ መመዘኛ ኢንዱስትሪ የሚሰላው እያንዳንዱ ክልል ለአገር አቀፍ የቤተሰብ ወጪ ያለውን የመቶኛ ድርሻ መሠረት በማድረግ ነው። በመሆኑም ለአገር አቀፍ ኢንዱስትሪ ስሌት ከ95 በመቶ በላይ አስተዋጽኦ የሚያደርጉ ክልሎች በቅደም ተከተል ኦሮሚያ፣ አማራ፣ የደቡብ ብሔር ብሔረሰቦችና ሕዝቦች፣ አዲስ አበባና ትግራይ ሲሆኑ የተቀሩት ክልሎች በየወሩ ለሚታዩው አገር አቀፍ የችርቻሮ ዋጋ መመዘኛ ኢንዱስትሪ ስሌት የሚኖራቸው አስተዋጽኦ ከአምስት በመቶ የማይበልጥ ነው።

ለችርቻሮ ዋጋ ጥናት በአጠቃላይ 119 የገበያ ቦታዎች የተመረጡ ሲሆን በእያንዳንዱ ክልል የተመረጡ የናሙና ገበያዎች ብዛትና በየኢንዱስትሪዎቻቸው ማዕቀፍ የተካተቱ ዕቃዎች/አገልግሎቶች ብዛት ከዚህ በታች ቀርቦአል።

ሠንጠረዥ ሀ: በጥናቱ የተሸፈኑ ገበያዎችና በኢንዱስትሪ ማዕቀፍ የተካተቱ ዕቃዎች/አገልግሎቶች ብዛት በክልል

Table A: Number of Markets Covered and Basket of Commodities by Region

ተራ ቁጥር	ክልል	የገበያ ቦታዎች ብዛት	በኢንዱስትሪ የተካተቱ ዕቃዎች/አገልግሎቶች ብዛት		Region
			ታህሳስ 1993=100	ታህሳስ 1999=100	
1	ትግራይ	8	114	143	Tigray
2	አፋር	4	85	153	Afar
3	አማራ	20	118	144	Amhara
4	ኦሮሚያ	24	127	161	Oromia
5	ሶማሌ	6	85	122	Somalie
6	ቤኒሻንጉል	6	111	142	Benishangul-Gumuz
7	ጊ.ቤ.ቤ.ሀ	31	130	152	SNNP
8	ጋምቤላ	3	105	103	Gambela
9	ሐረሪ	2	102	158	Harari
10	አዲስ አበባ ከተማ	12	175	193	Addis Ababa City Administration
11	ድራዳዋ አስተዳደር ድምር	3	121	150	Dire Dawa Administrative
		119			Total
Sr.No.		Number of Markets	Basket of Commodities		

ለጠቋሚ አሀዙ ክንዋኔ ዋናው ነገር በጠቋሚ አሀዙ ማዕቀፍ ተካትተው በዋናነት የሚያገለግሉ ዕቃዎችና አገልግሎቶች የመምረጥ ጉዳይ ነው። ጠቋሚ አሀዞች የሚመሠረቱት በአጠቃላይ በናሙና በሚመረጡ ዕቃዎች ላይ ሲሆን በጠቋሚ አሀዙ ማዕቀፍ ውስጥ መካተት የሚገባው ዕቃ መወሰን ግን ሁሌም ቀላል የሚባል ተግባር አይደለም። የተለያየ የአመራረጥ ዘዴ መጠቀም ቢቻልም የሚመረጡት ዕቃዎች ለረጅም ጊዜ የሚኖራቸው ተፈላጊነት፣ በአስተማማኝ ሁኔታ በገበያ ላይ የመገኘታቸው ጉዳይ፣ ሌሎችን ዕቃዎች የመወከል ብቃትና ከሌሎች ምርቶች ጋር ያላቸው ተወዳዳሪነት መሠረት ያደረገ እንዲሆን ይፈለጋል። በአጠቃላይ የተመረጡት ዕቃዎች በበቂ መጠን የመገኘታቸው ሁኔታ፣ በየወቅቱ ተወዳዳሪነታቸውና ዕቃዎችና አገልግሎቶች ምድቡን የመወከላቸው ብቃትን ማረጋገጥ ያስፈልጋል።

ታህሳስ 1999 ዓ.ም. መሠረት ያደረገው የሸማቾች ዋጋ መመዘኛ ኢንዱክስ አይነቶችና እያንዳንዱ ዋና ክፍል ያለው የወጪ ድርሻ በገፅ 6 ላይ ይታያል። ይህ ሠንጠረዥ እንደሚያሳየው የምግብ የመቶኛ የወጪ ድርሻ ታህሳስ 1993 ዓ.ም. ከነበረው 60 በመቶ ወደ 57 በመቶ ቀንሷል። በአንፃሩ ደግሞ ምግብ ነክ ያልሆነ መመዘኛ ኢንዱክስ ታህሳስ 1993 ዓ.ም. ከነበረው 40 በመቶ የወጪ ድርሻ ወደ 43 በመቶ ከፍ ብሏል። ባጠቃላይ ሲታይ በሁሉም ክልሎች ኢንዱክስ ላይ የምግብ የወጪ ድርሻ የማይናቅ ቅናሽ ያሳየ ሲሆን ምግብ ነክ ያልሆኑ የወጪ ድርሻ መጠነኛ እድገት አሳይታል።

የጥር ወር 2001 ዓ.ም. የዋጋ ግሽበት ሁኔታ

ከሠንጠረዥ #ሐ; መረዳት እንደሚቻለው በጥር ወር 2001 ዓ.ም. የተመዘገበው አገራዊ አጠቃላይ የዋጋ ግሽበት 45.6 በመቶ ሲሆን ይህ አሀዝ በጥር 2000 ከታየው 17.5 በመቶ አጠቃላይ የዋጋ ግሽበት ጋር ሲነፃፀር በ28.1 ጭማሪ አሳይቷል። በተመሳሳይ ሁኔታ በጥር ወር 2001 ዓ.ም. የተመዘገበው አገራዊ የምግብ የዋጋ ግሽበት 60.9 በመቶ ሲሆን አገራዊ ምግብ ነክ ያልሆኑ የዋጋ ግሽበት ደግሞ 23.4 በመቶ ሆኗል። በጥር ወር 2001 ዓ.ም. የተመዘገበው 60.9 በመቶ የምግብ የዋጋ ግሽበት ከጥር ወር 2000 በጀት ዓመት ከታየው 22.8 ጋር ሲነፃፀር በ38.1 ጭማሪ አሳይቷል። ለዚህም አገራዊ የምግብ የዋጋ ግሽበት መጨመር ምክንያት የሆኑት የተለያዩ የምግብ ክፍሎች ማለትም በእህል፣ በጥራጥሬ፣ በሥጋ፣ በዘይትና ቅባቶች (በተለይም ቅቤ)፣ በአይብና ዕንቁላል፣ በድንችና ሌሎች ሥራ-ሥሮች፣ በሌሎች ምግቦች እና ከቤት ወጪ በተወሰዱ ምግቦች ዋጋ ላይ ከፍተኛ ጭማሪ በመከሰቱ ነው።

ከነሐሴ ወር 2000 ዓ.ም እስከ ጥር ወር 2001 ዓ.ም የአጠቃላይ ዋጋ ግሽበትና የምግብ ዋጋ ግሽበት ወርሃዊ ለውጥ ከቀደሙት ወራት ጋር ሲነጻጸር ቀንሶል። ይህም ሲሆን የቻለው ከነሐሴ ወር 2000 ዓ.ም ጀምሮ የእህል ዋጋ ላይ (በተለይም በቀሎ፣ጤፍ፣ስንዴ፣) ከፍተኛ ድርሻ ባላቸው ክልሎች (በአዲስ አበባ፣በኦሮሚያ፣በአማራና በደቡብ) ከቀደሙት ወራት ጋር ሲነጻጸር የመረጋጋት ሁኔታ የታየበት በመሆኑ ነው። በተለይ የእህል ዋጋ በአብዛኛ ዎቹ ክልሎች ቀንሶአል።

ምግብ ነክ ካልሆኑ የኢንዱስትሪ ክፍሎች ውስጥ የቤት ኪራይ፣ የቤት መሥሪያ ዕቃዎች፣ ወሃና ኢነርጂ ከፍተኛ ድርሻ (50 ከመቶ ያህል) ይይዛል። ቀጥሎም ልብስና መጫሚያ ምግብ ነክ ካልሆኑት ውስጥ ከፍተኛ መቶኛ ድርሻ (20 ከመቶ ያህል) አለው። የነዳጅ ዋጋ በተከታታይ በመቀነሱ ምክንያት በጥር ወር 2001 ዓ.ም የትራንስፖርትና መገናኛ እና ነዳጅና ኃይል ኢንዱስትሪ ቅናሽ አሳይቶአል። በአጠቃላይ ከነሐሴ ወር 2000 ዓ.ም ጀምሮ የዋጋ ግሽበት ወርሃዊ ለውጥ (monthly change in Inflation) የቀነሰ ቢሆንም የዋጋ ግሽበቱ ግን ጭማሪ ያሳያል። ይህም ማለት ከነሐሴ 2001 ዓ.ም ወዲህ ያለው ከዚያ በፊት ከነበረው ጋር ሲወዳደር ሊረጋጋ ችሎአል። በሌላ በኩል የዋጋ ግሽበት የሚሰላው የ12 ወራት ተንቀሳቃሽ አማካይ (12 months moving average) ላይ ተመስርቶ ስለሆነ በጥቂት ወራት ውስጥ የታየው መለስተኛ መረጋጋት በአጭር ጊዜ ጎልቶ ሊወጣ አይችልም።

ከሠንጠረዥ (መ) ማየት እንደሚቻለው የጥር ወር 2001 ዓ.ም አጠቃላይ የዋጋ መመዘኛ ኢንዱስትሪ ከጥር ወር 2000 ዓ.ም ጋር ሲነጻጸር ያሳየው ዕድገት 37.8 ከመቶ ሲሆን በታህሳስ ወር 2001 ዓ.ም ከታየው 39.3 ከመቶ ዕድገት ጋር ሲተያይ የ1.5 ቅናሽ አሳይቶአል። በሌላ አባባል ያለፈውን ወር ኢንዱስትሪ ለውጥ ከአሁኑ ወር ጋር ሲነጻጸር በየወሩ እየቀነሰ መሄዱን ማየት እንችላለን።

January 2009 Inflation Rate

As it is indicated in Table 'C' below the country level overall inflation rate (annual change based on 12 months Moving Average) stood at 45.6 percent in January 2009. This rate is 28.1 percentage points higher than the corresponding annual average rate of 17.5 percent at January 2008. Similarly, the country level food inflation rate stood at 60.9 percent and the country level Non-food inflation rate stood at 23.4 percent in January 2009. The 60.9 percent Country level food inflation rate in January 2009 is 38.1 percentage points higher than that of 22.8 percent inflation rate at January 2008. This higher increase in the Food inflation rate was due to the increase in price of the Food components like Cereals, Pulses, Meat, Oils and fats (Specially Butter), Milk and egg, Vegetable and fruits, Potatoes & Other Tubers and Stems, Other food Items and food taken away from home.

From the month of August 2008 to January 2009 it was observed that the monthly percent change in General and Food inflation showed a decline as compared to the previous months. This was as a result of Cereals (especially Maize, Teff, and Wheat) price stabilization in the regions with the highest share in the CPI, namely, (Addis Ababa, Amhara, Oromia and Southern Nations and Nationalities) starting from August 2008 as compared to the previous months. The price of Cereals has been declining in most of the regions.

House Rent, Construction Materials, Water and Fuel and Power contribute the highest share (almost 50%) to the Non-Food index. The second most important group in the Non-Food index component is Clothing and Footwear which contributes about 20% to this component. Due to the continuous decline in the price of Fuel the January 2009 index for Transport and Communication and Fuel and power has been decreased. In general, the monthly percent change in the rate of inflation increase showed a decline starting August 2008 but the 12 months moving average inflation showed an increase. It means that after August 2008 we observe a stable price trend as compared to the preceding period. On the other hand, the inflation rate is computed based on 12 months moving average and a fairly stable situation observed in the recent few months could not be revealed in the short term.

As can be seen from Table D, the January 2009 General Consumer Price Index has increased by 37.8 percent as compared to January 2008 while it was 39.3 percent in December 2008 showing a monthly decline of 1.5 percentage points. In other words, when we compare last month's index change with the current month we observe a declining trend.

ሠንጠረዥ ሐ: በአገር አቀፍ ደረጃ የዋጋ ግሽበት ሁኔታ

Table C: The Country Level General Inflation Rate

በጀት ዓመት (ወር)	የዋጋ ግሽበት ሁኔታ				Budget Year and months
	አጠቃላይ የዋጋ ግሽበት	የምግብ ግሽበት	የዋጋ	የምግብ ያልሆኑ ግሽበት	
የ2000 በጀት ዓመት በወራት					The 2007/8 Budget Year in Months
ዓመታዊ አማካይ (ሐምሌ 1999 - ሰኔ 2000)	18.4	23.6		11.6	Annual Average (July 2007 – June 2008)
ሐምሌ 1999	15.9	17.9		13.2	July 2007
ነሐሴ 1999	16.1	18.6		12.8	August 2007
መስከረም 2000	16.5	19.7		12.3	September 2007
ጥቅምት 2000	16.9	20.6		11.9	October 2007
ኅዳር 2000	17.1	21.3		11.5	November 2007
ታህሳስ 2000	17.2	22.0		11.0	December 2007
ጥር 2000	17.5	22.8		10.5	January 2008
የካቲት 2000	18.0	23.7		10.5	February 2008
መጋቢት 2000	19.0	25.2		10.7	March 2008
ሚያዝያ 2000	19.9	26.6		10.8	April 2008
ግንቦት 2000	21.8	29.7		11.4	May 2008
ሰኔ 2000	25.3	34.9		12.5	June 2008
ሐምሌ 2000	29.6	41.3		13.8	July 2008
ነሐሴ 2000	33.6	46.9		15.4	August 2008
መስከረም 2001	37.2	51.8		17.0	September 2008
ጥቅምት 2001	40.3	55.7		18.8	October 2008
ኅዳር 2001	42.8	58.7		20.4	November 2008
ታህሳስ 2001	44.4	60.0		21.9	December 2008
ጥር 2001	45.6	60.9		23.4	January 2009
Budget Year	Inflation Rate				
	Overall Inflation rate	Food Inflation rate	Inflation	Non-food Inflation rate	

Revised (From January 2007 – November 2007)

ሠንጠረዥ መ: የዘንድሮውና የአምናው ተመሳሳይ ወሮች የሽማቻቸውን ዋጋ መመዘኛ ኢንዱስትሪ ለውጥ ንፅፅር በአገር አቀፍ ደረጃ ማጠቃለያ

Table D: Summary of Comparison of CPI Movements, Current vs. Last year's Similar Months at Country Level

በጀት ዓመት (ወር)	የዋጋ ግሽበት ሁኔታ ካለፈው ዓመት ተመሳሳይ ወር ጋር ሲነፃፀር			Budget Year and months
	አጠቃላይ የዋጋ ግሽበት	የምግብ የዋጋ ግሽበት	የምግብ ነክ ያልሆኑ የዋጋ ግሽበት	
የ2000 በጀት ዓመት በወራት				The 2007/8 Budget Year in Months
ዓመታዊ አማካይ (ሐምሌ 1999 - ሰኔ 2000)	24.9	34.2	12.3	Annual Average (July 2007 - June 2008)
መስከረም 2000	17.7	25.0	7.9	September 2007
ጥቅምት 2000	18.7	26.1	8.8	October 2007
ኅዳር 2000	18.1	24.8	9.2	November 2007
ታህሳስ 2000	18.4	25.7	8.8	December 2007
ጥር 2000	19.8	28.0	9.0	January 2008
የካቲት 2000	22.9	30.2	13.2	February 2008
መጋቢት 2000	29.6	39.4	16.2	March 2008
ሚያዝያ 2000	29.6	39.1	16.5	April 2008
ግንቦት 2000	39.1	54.1	18.5	May 2008
ሰኔ 2000	55.2	78.3	23.2	June 2008
ሐምሌ 2000	64.2	91.7	24.9	July 2008
ነሐሴ 2000	61.7	85.0	27.1	August 2008
መስከረም 2001	59.6	80.9	27.3	September 2008
ጥቅምት 2001	55.4	72.3	29.5	October 2008
ኅዳር 2001	49.4	63.3	28.2	November 2008
ታህሳስ 2001	39.3	46.7	27.9	December 2008
ጥር 2001	37.8	44.8	27.0	January 2009
Budget Year	Inflation Rate based on last year's similar month comparison			
	Overall Inflation rate	Food Inflation rate	Non-food Inflation rate	

Revised (From January 2007 – November 2007)

የዘንድሮውና የአምናው ተመሳሳይ ወሮች የችርቻሮ ዋጋ መመዘኛ ጠቋሚ አሀዝ ንፅፅር በአገር አቀፍ ደረጃ

Comparison of CPI Movements, Current vs Last year's Similar Months at Country Level

ከሠንጠረዥ 1(ሀ) መረዳት እንደሚቻለው የጥር ወር 2001 ዓ.ም የአገር አቀፍ ጠቅላላ የችርቻሮ ዋጋ ኢንዱክሽን ከጥር ወር 2000 ዓ.ም ጠቅላላ ኢንዱክሽን ጋር ሲነፃፀር በ37.8 ከመቶ ዕድገት አሳይቶአል። ለዚህ ዕድገት አስተዋጽኦ ያደረጉት ምግብ በ44.8 ከመቶ፣ መጠጥ በ61.8 ከመቶ፣ ሲጋራና ትምባሆ 36.3 ከመቶ፣ ልብስና መጫሚያ በ29.5 ከመቶ፣ የቤት ኪራይ፣ የቤት መሥሪያ ዕቃዎች፣ ወሃና ኢነርጂ በ27.1 ከመቶ፣ የቤት ዕቃዎች፣ ቤት ማስገጫዎች፣ የቤት ቁሳቁስና የቤት ሠራተኛ ደመወዝ በ28.9 ከመቶ፣ ህክምና 13.0 ከመቶ፣ ትራንስፖርትና መገናኛ በ9.1 ከመቶ፣ መዝናኛና ትምህርት በ16.7 ከመቶ፣ የግል ንጽህናና የግል ቋሚ ዕቃዎች በ26.4 ከመቶ እና ሌሎች ዕቃዎች በ9.1 ከመቶ በየኢንዱስትሪቸው ላይ ጭማሪ በማሳየታቸው ነው።

The January 2009 Country Level Consumer Price Index has increased by 37.8 percent as compared to January 2008 (Table 1(a)). This increase was attributed to the rise in the indices of its components; namely: Food by 44.8 percent, Beverages by 61.8 percent, Cigarettes and Tobacco by 36.3 percent, Clothing and Footwear by 29.5 percent, House Rent, Construction Materials, Water and Fuel and Power by 27.1 percent, Furniture, Furnishings, Household Equipment and Operation by 28.9 percent, Medical Care and Health by 13.0 percent, Transport and Communication by 9.1 percent, Recreation, Entertainment and Education by 16.7 percent, Personal Care Effects by 26.4 percent and Miscellaneous Goods by 9.1 percent.

ሠንጠረዥ 1(ለ) እንደሚያሳየው ለጠቅላላ ምግብ ኢንዱክሽን 44.8 ከመቶ መጨመር ምክንያት የሆኑት የምግብ ክፍሎች ማለትም እህል በ77.6 ከመቶ፣ ጥራጥሬ በ38.7 ከመቶ፣ ዳቦና ሌሎች የተዘጋጁ ምግቦች በ75.9 ከመቶ፣ ሥጋ በ25.1 ከመቶ፣ ወተት፣ አይብና ዕንቁላል በ40.5 ከመቶ፣ በዘይትና ቅባቶች ኢንዱክሽን ላይ በ9.9 ከመቶ፣ አትክልትና ፍራፍሬ በ8.1 ከመቶ፣ ድንችና ሌሎች ስራ ስሮች በ52.8 ከመቶ፣ ያልተቆላ ቡናና ሻይ ቅጠል በ14.0 ከመቶ፣ ሌሎች ምግቦች በ76.4 ከመቶ፣ የማስፈጫ አገልግሎት በ12.4 ከመቶ እና ከቤት ወጪ የተወሰዱ ምግቦች በ32.0 ከመቶ ዕድገት በየኢንዱስትሪቸው ላይ በማሳየታቸው ነው። ሌላ በኩል ቅመማ ቅመም በ22.4 ከመቶ ኢንዱስትሪ ላይ ቅናሽ አሳይቶአል።

The 44.8 percent increase in the Food index was observed due to rise in the indices of the components of Food index (Table 1(b)) namely: Cereals by (77.6 percent), Pulses (38.7 percent), Bread and Other Prepared Food (75.9 percent), Meat (25.1 percent), Milk, Cheese and Eggs (40.5 percent), oils and Fats by (9.9 percent), Vegetables and fruits (8.1 percent), Potatoes, Other Tubers and Stems (52.8 percent), Coffee and Tea Leaves (14.0 percent), other Food Items (76.4 percent), Milling Charge by (12.4 percent), and Food Taken Away from Home (32.0 percent). On the other hand, Spices declined by (22.4 percent)

**የዘንድሮውና የአምናው ተመሳሳይ ወሮች
የችርቻሮ ዋጋ መመዘኛ ጠቋሚ አሀዝ ንፅፅር በአገር አቀፍና በክልሎች ደረጃ**
Comparison of CPI Movements, Current vs Last year at Country and
Regional Levels

ከሠንጠረዥ 2(ሀ) መረዳት እንደሚቻለው የጥር ወር 2001 ዓ.ም የአገር አቀፍ ጠቅላላ የችርቻሮ ዋጋ መመዘኛ ኢንዱክስ ከጥር ወር 2000 ዓ.ም ጠቅላላ ኢንዱክስ ጋር ሲነፃፀር በ37.8 ከመቶ ዕድገት አሳይቶአል። ለዚህ ዕድገት አስተዋጽኦ ያደረጉት አዲስ አበባ 31.8 ከመቶ፣ አፋር 27.0 ከመቶ፣ አማራ 34.5 ከመቶ፣ ቤኔሻንጉል ጉሙዝ 32.3 ከመቶ፣ ድሬዳዋ 35.0 ከመቶ፣ ጋምቤላ 46.9 ከመቶ፣ ሐረሪ 47.5 ከመቶ፣ ኦሮሚያ 41.7 ከመቶ፣ ደቡብ ብሄሮች፣ ብሄረሰቦችና ሕዝቦች 39.9 ከመቶ፣ ሶማሌ 46.8 ከመቶ እና ትግራይ 42.2 ከመቶ በጠቅላላ ኢንዱክሶቻቸው ላይ ጭማሪ በማሳየታቸው ነው።

Table 2(a) also displays that the January 2009 Country level General Consumer Price Index has increased by 37.8 percent as compared to January 2008. This increase was attributed to the rise in the indices of its constituent regions; namely: Addis Ababa 31.8 percent, Afar 27.0 percent, Amhara 34.5 percent, Benishangul Gumuz 32.3 percent, Dire Dawa 35.0 percent, Gambela 46.9 percent, Harari 47.5 percent, Oromia 41.7 percent, SNNP 39.9 percent, Somali 46.8 percent and Tigray 42.2 percent.

ሠንጠረዥ 2(ለ) እንደሚያሳየው አገር አቀፍ ጠቅላላ የምግብ ዋጋ መመዘኛ ኢንዱክስ 44.8 ከመቶ መጨመር ምክንያት የሆኑት አዲስ አበባ 45.9 ከመቶ፣ አፋር 39.8 ከመቶ፣ አማራ 42.1 ከመቶ፣ ቤኔሻንጉል ጉሙዝ 36.0 ከመቶ፣ ድሬዳዋ 51.9 ከመቶ፣ ጋምቤላ 54.5 ከመቶ፣ ሐረሪ 63.3 ከመቶ፣ ኦሮሚያ 47.3 ከመቶ፣ ደቡብ ብሄሮች፣ ብሄረሰቦችና ሕዝቦች 43.9 ከመቶ፣ ሶማሌ 61.1 ከመቶ እና ትግራይ 51.8 ከመቶ በጠቅላላ ኢንዱክሶቻቸው ላይ ጭማሪ በማሳየታቸው ነው።

Table 2(b) reveals that the 44.8 percent increase in the country level Food index was observed due to a rise in the indices of the regions namely: Addis Ababa 45.9 percent, Afar 39.8 percent, Amhara 42.1 percent, Benishangul Gumuz 36.0 percent, Dire Dawa 51.9 percent, Gambela 54.5 percent, Harari 63.3 percent, Oromia 47.3 percent, SNNP 43.9 percent, Somali 61.1 percent and Tigray 51.8 percent.

ሠንጠረዥ 1ሀ- ጠቅላላ የ ሽግግር ዋጋ መመዘኛ ኢንዱስትሪ ቦሎኒ የተሳተፉ ክፍሎች በአገር አቀፍ ደረጃ ታህሳስ 1999 = 100

Table 1a: General Consumer Price Index and Its Components at Country Level December 2006 = 100

ወርና ዓመት	ጠቅላላ ኢንዱስትሪ	ጠቅላላ የምግብ ኢንዱስትሪ	ጠቅላላ የምግብ ክፍል ኢንዱስትሪ	Non-food Consumer Price Index Components											Month and Year
				መጠጥ	ሊጃራና ትምባሆ	ልብና መጫሪያ	የቤት ኪራይ የቤት መሥሪያ ስቃዎችናውሃገገ ማድኘገያል	የቤት ስቃዎች የቤት ግዝጊታዎች የቤት ተሳታፊዎች የቤት ሠራተኛ ደመወዝ	ሕክምና	ትራንስፖርትና መገናኛ	መዝናኛና ትምህርት	የገልጻል ስቃዎች	ሌሎች ስቃዎች		
General Index	Food Total	Non-Food Total	Beverages	Cigarettes and Tobacco	Clothing and Footwear	House Rent, Construction Materials, Water, and Fuel and Power	Furniture, Furnishings, Household Equipment and Operation	Medical Care and Health	Transport and Communication	Recreation, Entertainment and Education	Personal Care and Effects	Miscellaneous Goods			
ታህሳስ 1999	100.0	100.0	100.0	100.0	100.0	100.0	100.0	100.0	100.0	100.0	100.0	100.0	100.0	100.0	December 2006
ሐምሌ 1999 - ሰኔ 2000	126.9	137.2	113.3	113.5	107.8	117.0	112.0	125.5	111.9	105.3	106.9	112.6	104.7	104.7	July 2007 - June 2008
2000															2007/2008
መስከረም 2000	115.3	121.9	106.5	104.3	102.1	111.8	104.4	114.2	109.0	100.7	104.7	106.0	102.9	102.9	September "
ጥቅምት 2000	117.1	124.4	107.5	104.4	101.6	112.4	105.9	115.8	108.8	100.5	105.6	107.1	103.2	103.2	October "
ገዳር 2000	117.2	123.8	108.5	106.0	101.7	114.0	106.6	118.6	108.9	101.1	105.4	105.7	103.4	103.4	November "
ታህሳስ 2000	118.4	125.7	108.8	108.1	101.1	114.5	106.7	120.1	109.7	100.3	104.8	107.0	102.5	102.5	December "
ጥር 2000	120.2	127.9	109.9	109.2	102.5	116.1	107.4	122.6	111.4	99.9	106.8	109.6	103.9	103.9	January 2008
የካቲት 2000	125.7	133.9	114.8	113.2	112.1	118.9	112.6	130.6	112.6	111.9	108.3	114.0	104.4	104.4	February "
መጋቢት 2000	135.2	146.9	119.6	118.8	119.9	121.0	119.5	135.4	114.2	112.3	110.2	118.3	106.2	106.2	March "
ጊዳር 2000	137.2	149.8	120.5	120.5	114.0	121.9	120.3	138.0	116.1	112.0	111.0	120.6	106.8	106.8	April "
ጥንቅት 2000	147.8	166.3	123.3	126.9	115.9	126.5	122.4	141.7	117.3	112.0	110.4	126.4	108.8	108.8	May "
ሰኔ 2000	166.7	195.2	128.8	144.7	118.4	129.5	129.8	145.1	119.9	112.1	113.1	127.7	109.9	109.9	June "
2001															2008/2009
ሐምሌ 2000	179.9	216.6	131.2	166.9	125.5	131.6	130.5	148.4	120.8	112.1	115.4	131.3	111.8	111.8	July 2008
ኔሐሴ 2000	182.3	218.5	134.3	171.6	131.2	135.9	133.5	151.4	122.6	112.1	118.3	134.3	113.3	113.3	August "
መስከረም 2001	184.1	220.6	135.5	173.8	131.4	138.8	133.8	153.2	124.0	112.2	120.1	134.8	116.1	116.1	September "
ጥቅምት 2001	182.0	214.3	139.2	176.3	132.6	141.7	138.2	155.6	125.7	124.2	121.4	134.5	115.0	115.0	October "
ገዳር 2001	175.1	202.2	139.2	175.2	133.5	146.6	136.1	157.2	125.8	120.0	123.6	138.0	115.0	115.0	November "
ታህሳስ 2001	165.0	184.3	139.4	174.3	136.0	148.6	136.7	157.5	124.8	113.6	124.0	137.2	113.6	113.6	December "
ጥር 2001	165.6	185.2	139.6	176.8	139.7	150.4	136.4	158.1	125.8	109.1	124.6	138.6	113.4	113.4	January 2009

ወንጠራዊ ድህረ- ጠቅላላ የ ሽግግሮች ዋጋ መመዘኛ ኢንዱስትሪ ግብይት ስላገር ለተኖ ለና በክልሎች ደረጃ
 ታህሳስ 1999 = 100

Table 2a: Summary of General Consumer Price Indices at Country and Regional Levels
 December 2006=100

ወርና ዓመት	Reporting Level												Month and Year	
	Eth.	A.A.	Afar	Amhara	B.Gumuz	D.Dawa	Gambela	Harari	Oromia	SNNP	Somalia	Tigray		
ታህሳስ 1999	100.0	100.0	100.0	100.0	100.0	100.0	100.0	100.0	100.0	100.0	100.0	100.0	100.0	December 2006
ሐምሌ 1999 - ሰኔ 2000	126.9	121.8	124.3	127.8	137.7	125.6	123.7	119.1	129.0	125.6	118.5	130.1	130.1	July 2007 - June 2008
2000														2007/2008
ሐምሌ 1999	109.6	109.3	111.9	111.8	113.6	110.9	109.2	103.9	109.7	107.2	103.9	110.3	110.3	July "
ነሐሴ 1999	112.7	111.2	116.6	117.1	121.3	114.2	113.9	107.7	112.1	108.9	107.3	115.5	115.5	August "
መስከረም 2000	115.3	113.2	118.7	120.7	127.0	116.7	116.4	108.9	114.3	110.9	107.4	121.4	121.4	September "
ጥቅምት 2000	117.1	113.0	119.1	121.4	128.3	116.6	116.4	110.1	116.6	113.4	110.1	125.7	125.7	October "
ገዳር 2000	117.2	111.8	118.1	121.7	129.7	116.8	117.2	109.1	117.4	113.6	109.6	120.1	120.1	November "
ታህሳስ 2000	118.4	115.3	118.5	121.4	131.3	119.0	118.2	109.3	119.2	115.3	109.4	120.7	120.7	December "
ጥር 2000	120.2	116.0	119.9	122.4	135.2	122.2	120.0	111.8	121.2	117.6	111.9	122.6	122.6	January 2008
የካቲት 2000	125.7	122.2	122.4	125.6	142.3	126.7	124.3	116.6	128.4	122.6	121.6	127.7	127.7	February "
መጋቢት 2000	135.2	129.7	126.8	131.2	148.0	132.8	125.9	123.6	139.4	135.9	125.3	137.7	137.7	March "
ጊዳር 2000	137.2	130.3	128.2	132.5	146.9	135.1	123.6	127.5	141.9	139.1	127.3	139.7	139.7	April "
ጥንተት 2000	147.8	140.0	140.9	144.7	151.9	143.2	137.9	144.4	154.6	148.0	136.4	146.6	146.6	May "
ሰኔ 2000	166.7	149.8	150.2	162.8	176.1	153.4	161.9	156.2	173.1	174.7	151.5	173.0	173.0	June "
2001														2008/2009
ሐምሌ 2000	179.9	155.4	162.3	180.5	201.4	160.4	197.8	163.7	188.3	184.1	167.8	187.5	187.5	July 2008
ነሐሴ 2000	182.3	156.6	164.4	182.5	212.9	167.9	217.2	170.1	190.4	185.3	174.6	192.7	192.7	August "
መስከረም 2001	184.1	157.9	165.1	185.1	218.6	168.4	218.0	171.6	190.9	187.5	178.2	199.3	199.3	September "
ጥቅምት 2001	182.0	160.8	164.6	185.1	204.7	169.8	219.7	173.6	187.9	181.1	175.1	198.5	198.5	October "
ገዳር 2001	175.1	159.7	159.2	179.9	200.6	167.4	194.6	169.4	179.8	172.3	170.1	187.8	187.8	November "
ታህሳስ 2001	165.0	155.0	152.1	166.5	186.9	166.5	180.8	166.1	168.2	164.9	154.8	177.8	177.8	December "
ጥር 2001	165.6	152.9	152.3	164.6	178.9	164.9	176.2	164.9	171.7	164.5	164.3	174.3	174.3	January 2009

ሠንጠረዥ 3 ሀ፡- ጠቅላላ የሽግግር ዋጋ መመዘኛ ሊንደክስ በሥሩ የተካተቱ ክፍሎች ለአዲስ አበባ ከተማ መስተዳድር ታህሳስ 1999 = 100

Table 3a: General Consumer Price Index and Its Components for Addis Ababa City Administration December 2006 = 100

ወርና ዓመት	ጠቅላላ ሊንደክስ General Index	ጠቅላላ የምግብ ሊንደክስ Food Total	ጠቅላላ የምግብ ክፍል ሊንደክስ Non-Food Total	Non-food Consumer Price Index Components											Month and Year	
				ምግብ ክፍል የሊንደክስ ክፍሎች Beverages	ሲጃራና ትምባሆ Cigarettes and Tobacco	ላብሳና መጫጊያ Clothing and Footwear	የቤት ኪራይ የቤት መሥሪያ ስቃዎች+ውሃ ነጻጅናጥይል House Rent, Construction Materials, Water, and Fuel and Power	የቤት ስቃዎች የቤት ግዝጊያዎች የቤት ተሳታፊዎች የቤት ሠራተኛ ደመወዝ Furniture, Furnishings, Household Equipment and Operation	ሕክምና Medical Care and Health	ትራንስፖርትና ጠገናዎች Transport and Communication	መዘናኛና ትምህርት Recreation, Entertainment and Education	የግል ገንቦናና የግል ጽጌ ስቃዎች Personal Care and Effects	ሌሎች ስቃዎች Miscellaneous Goods			
ታህሳስ 1999	100.0	100.0	100.0	100.0	100.0	100.0	100.0	100.0	100.0	100.0	100.0	100.0	100.0	100.0	100.0	December 2006
ሐምሌ 1999 - ሰኔ 2000	121.8	134.8	112.8	127.4	108.7	127.9	106.2	132.3	124.3	102.3	104.4	118.6	104.7	100.0	100.0	July 2007 - June 2008
2000																2007/2008
መስከረም 2000	113.2	126.0	104.3	117.6	101.4	114.9	98.7	112.8	118.0	98.2	102.4	108.5	101.0	100.0	100.0	September "
ጥቅምት 2000	113.0	124.6	105.0	117.5	102.8	118.7	98.9	114.8	118.6	97.9	100.8	110.1	101.0	100.0	100.0	October "
ኅዳር 2000	111.8	118.1	107.4	118.7	102.4	128.5	98.9	121.7	123.3	97.6	101.4	114.0	102.4	100.0	100.0	November "
ታህሳስ 2000	115.3	123.2	109.7	124.8	101.3	131.3	99.7	132.5	122.8	97.6	104.2	115.0	101.1	100.0	100.0	December "
ጥር 2000	116.0	124.3	110.2	127.1	102.0	132.0	99.6	136.0	122.8	97.6	102.0	116.1	104.6	100.0	100.0	January 2008
ፀደቅት 2000	122.2	131.1	116.0	133.0	117.2	133.0	105.3	141.5	128.5	107.9	109.0	120.8	102.2	100.0	100.0	February "
መጋቢት 2000	129.7	142.6	120.7	134.8	121.3	136.1	114.1	146.7	132.5	109.2	107.6	127.1	106.1	100.0	100.0	March "
ሚያዝያ 2000	130.3	143.2	121.4	134.2	117.3	136.2	115.2	147.5	131.4	108.4	110.1	129.5	107.6	100.0	100.0	April "
ግንቦት 2000	140.0	163.5	123.7	143.6	118.6	138.8	117.3	153.3	132.4	108.4	110.5	132.4	110.9	100.0	100.0	May "
ሰኔ 2000	149.8	183.9	126.2	153.8	118.6	143.9	119.7	156.0	133.1	108.5	110.3	136.5	115.1	100.0	100.0	June "
2001																2008/2009
ሐምሌ 2000	155.4	195.2	127.7	174.1	127.9	148.3	119.7	155.6	145.6	108.3	108.5	139.5	117.0	100.0	100.0	July 2008
ኦገስት 2000	156.6	197.5	128.2	174.4	129.7	151.3	118.7	157.7	141.4	108.4	109.3	139.5	121.7	100.0	100.0	August "
መስከረም 2001	157.9	198.8	129.4	178.1	129.2	155.6	118.6	160.0	141.0	108.4	112.7	140.0	121.6	100.0	100.0	September "
ጥቅምት 2001	160.8	196.8	135.8	177.4	129.0	158.1	126.6	161.7	145.8	123.9	114.8	140.9	121.5	100.0	100.0	October "
ኅዳር 2001	159.7	194.8	135.3	177.7	144.3	160.0	121.8	165.9	145.8	122.3	119.7	144.0	121.6	100.0	100.0	November "
ታህሳስ 2001	155.0	184.8	134.4	174.7	163.6	162.9	121.1	163.5	145.2	116.4	124.2	142.0	121.8	100.0	100.0	December "
ጥር 2001	152.9	181.3	133.2	174.3	172.0	164.5	118.5	164.7	140.6	113.0	123.5	143.0	123.1	100.0	100.0	January 2009

ሠንጠረዥ 4ሀ፡ ጠቅላላ የ ሽንጃቸ ዓጋ መጠነኛ ኢንዱስትሪ ቢሥሩ የተካተቱ ክፍሎች ለላዕረ ክልላዊ መንግሥት ታህሳስ 1999 = 100

Table 4a: General Consumer Price Index and Its Components for the Afar Regional State December 2006 = 100

ወርና ዓመት	ጠቅላላ ኢንዱስትሪ	ጠቅላላ የምግብ ኢንዱስትሪ	ጠቅላላ የምግብ ክፍል ኢንዱስትሪ	Non-food Consumer Price Index Components											Month and Year
				መጠን	ሲጃራና ትምብሆ	ልዩነት መግቢያ	የቤት ኪራይ የቤት መሥሪያ ስቃዎች+ውሃ ነጻጅናሃይል	የቤት ስቃዎች የቤት ግዝጊያዎች የቤት ተሳታፊዎች የቤት ሠራተኛ ደመወዝ	ሕክምና	ትራንስፖርትና መገናኛ	መዝናኛና ትምህርት	የግል ግለሰብ ስቃዎች	ሌሎች ስቃዎች		
	General Index	Food Total	Non-Food Total	Beverages	Cigarettes and Tobacco	Clothing and Footwear	House Rent, Construction Materials, Water, and Fuel and Power	Furniture, Furnishings, Household Equipment and Operation	Medical Care and Health	Transport and Communication	Recreation, Entertainment and Education	Personal Care and Effects	Miscellaneous Goods		
ታህሳስ 1999	100.0	100.0	100.0	100.0	100.0	100.0	100.0	100.0	100.0	100.0	100.0	100.0	100.0	December 2006	
ሐምሌ 1999 - ሰኔ 2000	124.3	136.1	110.2	109.2	102.5	114.5	107.3	113.8	100.6	124.4	92.2	107.2	101.5	July 2007 - June 2008	
2000														2007/2008	
መስከረም 2000	118.7	128.5	107.1	109.0	100.0	111.5	106.2	106.2	100.0	120.3	87.6	99.0	100.0	September "	
ጥቅምት 2000	119.1	129.1	107.3	106.8	100.0	110.0	106.6	105.8	98.1	120.5	93.9	106.9	100.8	October "	
ኅዳር 2000	118.1	126.5	108.0	109.3	100.0	112.0	106.6	106.4	99.4	120.5	91.8	110.2	102.5	November "	
ታህሳስ 2000	118.5	127.8	107.5	109.3	99.3	111.9	106.4	105.1	100.2	118.8	90.1	108.0	101.3	December "	
ጥር 2000	119.9	128.7	109.5	108.3	99.3	114.0	107.9	108.8	102.5	121.8	94.0	110.7	101.3	January 2008	
የካቲት 2000	122.4	131.1	112.1	107.5	103.3	116.3	109.8	114.6	100.0	130.8	94.6	107.4	101.3	February "	
መጋቢት 2000	126.8	137.9	113.6	109.0	106.1	117.7	109.3	122.1	100.6	130.8	95.8	109.2	102.6	March "	
ሚያዝያ 2000	128.2	139.4	114.9	110.3	105.7	118.3	110.4	125.7	106.9	130.8	96.0	108.2	102.6	April "	
ግንቦት 2000	140.9	161.9	115.9	111.5	107.0	119.2	111.7	127.8	102.3	130.3	95.3	110.7	102.6	May "	
ሰኔ 2000	150.2	178.4	116.6	113.9	109.6	122.3	109.5	132.2	100.9	130.8	92.5	114.9	102.4	June "	
2001														2008/2009	
ሐምሌ 2000	162.3	198.7	119.1	132.3	118.0	123.6	112.3	135.6	89.2	130.8	95.3	118.6	104.4	July 2008	
ኔሐሴ 2000	164.4	200.6	121.4	132.3	123.4	132.6	111.6	137.0	93.0	130.8	97.9	118.0	104.3	August "	
መስከረም 2001	165.1	201.0	122.4	134.5	131.3	131.3	112.4	138.9	115.4	130.8	102.2	120.6	105.3	September "	
ጥቅምት 2001	164.6	200.0	122.4	129.7	132.5	129.4	112.9	139.3	116.3	133.1	104.4	121.1	106.6	October "	
ኅዳር 2001	159.2	192.5	119.6	129.7	132.8	128.6	108.6	139.8	112.5	117.7	101.9	119.7	106.7	November "	
ታህሳስ 2001	152.1	180.2	118.7	129.7	132.8	126.8	108.5	141.0	107.2	106.0	107.6	119.6	106.7	December "	
ጥር 2001	152.3	180.0	119.3	129.7	135.3	131.6	107.8	141.0	106.8	97.7	109.7	122.3	106.7	January 2009	

ወንጠረዥ 5ሀ፡- ጠቅላላ የ ሽግግር ዋጋ መመዘኛ ኢንዱክስ በሥነ ፍተሳተኛ ክፍሎች ለአግራ ክልላዊ መንግሥት ታህሳስ 1999 = 100

Table 5a: General Consumer Price Index and Its Components for the Amhara Regional State
December 2006 = 100

ወርና ዓመት	ጠቅላላ ኢንዱክስ General Index	ጠቅላላ የምግብ ኢንዱክስ Food Total	ጠቅላላ የምግብ ነፃ የልሆኑ ኢንዱክስ Non-Food Total	የምግብ ነፃ የልሆኑ የኢንዱክስ ክፍሎች Non-food Consumer Price Index Components											Month and Year
				መጠጥ Beverages	ቢጃራና ትምባሆ Cigarettes and Tobacco	ላብስና መጫጊያ Clothing and Footwear	የቤት ኪራይ የቤት መሥሪያ ስቃዎች+ውሃ ነጻጅናሃይል House Rent, Construction Materials, Water, and Fuel and Power	የቤት ስቃዎች የቤት ግንባራዎች የቤት ተሳታፊዎች የቤት ሠራተኛ ደመወዝ Furniture, Furnishings, Household Equipment and Operation	ሕክምና Medical Care and Health	ትራንስፖርትና ጠገናኛ Transport and Communication	መዝናኛና ትምህርት Recreation, Entertainment and Education	የግል ገንባራና የግል ጽጌ ስቃዎች Personal Care and Effects	ሌሎች ስቃዎች Miscellaneous Goods		
ታህሳስ 1999	100.0	100.0	100.0	100.0	100.0	100.0	100.0	100.0	100.0	100.0	100.0	100.0	100.0	100.0	December 2006
ሐምሌ 1999 - ሰኔ 2000	127.8	139.6	108.4	112.4	115.8	109.5	105.8	120.9	112.8	106.6	108.2	117.8	101.6	101.6	July 2007 - June 2008
2000															2007/2008
መስከረም 2000	120.7	130.1	105.1	104.1	108.5	109.3	103.9	109.5	105.7	98.9	103.3	104.9	100.1	100.1	September "
ጥቅምት 2000	121.4	132.3	103.5	101.1	107.2	106.9	100.9	113.5	108.4	99.8	105.6	110.6	99.9	99.9	October "
ኅዳር 2000	121.7	131.4	105.6	104.7	105.0	105.8	104.5	115.8	106.4	99.6	105.5	110.5	100.0	100.0	November "
ታህሳስ 2000	121.4	130.8	106.1	104.6	108.5	106.2	104.9	115.6	107.8	100.7	106.6	111.9	101.7	101.7	December "
ጥር 2000	122.4	132.2	106.5	106.9	108.0	107.2	104.5	117.3	111.7	99.5	108.4	115.0	102.8	102.8	January 2008
ፀደቅት 2000	125.6	134.9	110.4	111.4	120.6	111.5	107.1	125.9	117.1	116.6	109.9	123.1	102.7	102.7	February "
መጋቢት 2000	131.2	142.5	112.6	115.7	128.4	113.7	108.9	131.2	118.8	116.5	110.5	126.8	102.8	102.8	March "
ሚያዝያ 2000	132.5	145.0	111.9	117.4	127.1	111.8	107.9	131.0	124.0	116.5	112.8	127.0	103.3	103.3	April "
ግንቦት 2000	144.7	164.3	112.5	128.9	129.9	112.6	106.3	135.3	121.1	116.5	114.3	139.6	102.9	102.9	May "
ሰኔ 2000	162.8	190.4	117.3	146.6	131.3	115.7	112.0	139.1	122.6	116.4	114.2	138.2	102.8	102.8	June "
2001															2008/2009
ሐምሌ 2000	180.5	216.5	121.5	190.9	145.5	115.0	115.4	142.5	121.7	116.4	115.2	141.3	103.1	103.1	July 2008
ነሐሴ 2000	182.5	218.0	124.2	199.5	141.2	121.1	117.0	144.1	121.3	116.4	118.1	144.3	103.2	103.2	August "
መስከረም 2001	185.1	221.4	125.5	202.5	145.7	122.6	117.5	149.6	116.6	116.6	121.7	147.8	103.2	103.2	September "
ጥቅምት 2001	185.1	220.9	126.2	201.4	147.0	125.4	118.4	147.1	118.0	122.1	122.1	139.4	103.2	103.2	October "
ኅዳር 2001	179.9	212.2	126.9	202.5	147.0	129.6	117.7	150.3	118.5	119.0	123.2	142.1	103.2	103.2	November "
ታህሳስ 2001	166.5	190.7	126.8	202.4	148.0	131.4	116.7	152.5	118.5	113.4	123.5	143.4	103.2	103.2	December "
ጥር 2001	164.6	187.8	126.6	201.3	147.7	132.8	115.6	155.6	123.2	107.8	124.0	144.5	103.2	103.2	January 2009

ወንጠራዥ ልውጥ ጠቅላላ የ ሽንገሎች የጋ መጠነኛ ኢንዱስትሪ ስራ የተካተቱ ክፍሎች ለቤኔሽንገላ ንድፍ ክልል መገንጠት ታህሳስ 1999 = 100

Table 6a: General Consumer Price Index and Its Components for the Benishangul Gumuz Regional State
December 2006 = 100

ወርና ዓመት	ጠቅላላ ኢንዱስትሪ General Index	ጠቅላላ የምግብ ኢንዱስትሪ Food Total	ጠቅላላ የምግብ ከፍተኛ ኢንዱስትሪ Non-Food Total	Non-food Consumer Price Index Components											Month and Year
				ምግብ ከፍተኛ Beverages	ሲጃራና ትምባህ Cigarettes and Tobacco	ላብስና መጫጫያ Clothing and Footwear	የቤት ኪራይ የቤት መሥሪያ ስራዎች፣ውሃ፣ ኃይልና ሃይድሮፕላን House Rent, Construction Materials, Water, and Fuel and Power	የቤት ስራዎች የቤት ግንባታዎች የቤት ተሳታፊዎች የቤት ሠራተኛ ደመወዝ Furniture, Furnishings, Household Equipment and Operation	ሕክምና Medical Care and Health	ትራንስፖርትና ጠገናዥ Transport and Communication	መዘናኛና ትምህርት Recreation, Entertainment and Education	የግል ንጹህናና የግል ጽግራ ስራዎች Personal Care and Effects	ሌሎች ስራዎች Miscellaneous Goods		
ታህሳስ 1999	100.0	100.0	100.0	100.0	100.0	100.0	100.0	100.0	100.0	100.0	100.0	100.0	100.0	100.0	December 2006
ሐምሌ 1999 - ሰኔ 2000	137.7	148.2	123.7	111.2	113.2	123.8	141.3	114.6	111.0	101.0	112.2	115.2	103.3	July 2007 - June 2008	
2000														2007/2008	
መስከረም 2000	127.0	133.4	118.5	101.4	109.0	112.1	141.1	107.1	104.6	102.1	108.3	103.1	100.6	September "	
ጥቅምት 2000	128.3	134.6	119.9	102.7	106.9	113.1	143.7	108.0	107.1	102.1	108.1	103.8	101.2	October "	
ኅዳር 2000	129.7	135.7	121.7	104.1	108.1	120.1	143.6	109.8	107.9	101.1	107.9	107.5	102.9	November "	
ታህሳስ 2000	131.3	139.1	120.9	110.5	112.4	120.7	137.9	111.5	111.3	100.0	106.2	109.6	102.4	December "	
ጥር 2000	135.2	146.6	120.2	111.8	109.3	123.9	134.3	108.6	108.4	100.4	115.0	110.8	102.9	January 2008	
የካቲት 2000	142.3	154.8	125.7	113.4	116.0	127.2	141.4	118.4	112.8	100.4	115.6	123.7	103.6	February "	
መጋቢት 2000	148.0	161.2	130.6	120.1	116.9	135.2	147.3	120.8	118.1	100.4	117.5	125.5	105.1	March "	
ሚያዝያ 2000	146.9	160.0	129.6	121.1	119.5	136.1	143.3	120.0	120.1	100.4	118.5	129.5	104.2	April "	
ግንቦት 2000	151.9	167.9	130.7	122.4	120.5	137.2	144.3	122.1	118.1	100.4	120.3	130.7	106.5	May "	
ሰኔ 2000	176.1	206.4	136.1	123.3	125.2	138.6	152.2	134.1	123.8	100.4	119.7	134.8	107.6	June "	
2001														2008/2009	
ሐምሌ 2000	201.4	246.8	141.4	143.3	144.0	140.9	148.4	150.1	130.0	100.4	143.4	137.7	109.2	July 2008	
ክሌሌ 2000	212.9	262.9	146.9	149.2	143.3	142.0	158.7	151.1	137.4	100.4	154.4	140.4	111.1	August "	
መስከረም 2001	218.6	272.8	146.8	148.3	137.9	147.2	158.5	146.0	138.1	100.4	155.4	141.3	111.1	September "	
ጥቅምት 2001	204.7	246.6	149.4	148.6	133.8	151.4	159.4	152.8	138.4	106.9	158.1	139.0	113.3	October "	
ኅዳር 2001	200.6	237.8	151.5	149.5	140.1	160.8	157.6	149.5	140.6	106.9	158.4	143.4	114.4	November "	
ታህሳስ 2001	186.9	215.0	149.8	148.2	140.0	159.3	152.2	161.1	140.0	106.7	158.8	141.6	116.3	December "	
ጥር 2001	178.9	199.4	151.8	148.8	141.7	163.4	155.6	161.6	149.0	100.1	158.5	141.4	118.4	January 2009	

ሠንጠረዥ 7ሀ፡- ጠቅላላ የ ሽግግር ዋጋ መመዘኛ ኢንዱስትሪ ቢሥሩ የተካተቱ ክፍሎች ለድረጃ ለስተዳደር ካውንሳል ታህሳስ 1999 = 100

Table 7a: General Consumer Price Index and Its Components for the Dire Dawa Administrative Council December 2006 = 100

ወርና ዓመት	ጠቅላላ ኢንዱስትሪ	ጠቅላላ የምግብ ኢንዱስትሪ	ጠቅላላ የምግብ ካል-ኢንዱስትሪ	Non-food Consumer Price Index Components											Month and Year
				መጠን	ቢዳራና ትምህርት	ላብስና መጫዊያ	የቤት ኪራይ የቤት መሥሪያ ስቃዎች+ውሃ ነጻጅናሃይል	የቤት ስቃዎች የቤት ግንባታዎች የቤት ቁሳቁስ የቤት ሠራተኛ ደመወዝ	ሕክምና	ትራንስፖርትና ግንኙነት	መዘናኛና ትምህርት	የግል ገንባታና የግል ጽግራ ስቃዎች	ሌሎች ስቃዎች		
General Index	Food Total	Non-Food Total	Beverages	Cigarettes and Tobacco	Clothing and Footwear	House Rent, Construction Materials, Water, and Fuel and Power	Furniture, Furnishings, Household Equipment and Operation	Medical Care and Health	Transport and Communication	Recreation, Entertainment and Education	Personal Care and Effects	Miscellaneous Goods			
ታህሳስ 1999	100.0	100.0	100.0	100.0	100.0	100.0	100.0	100.0	100.0	100.0	100.0	100.0	100.0	December 2006	
ሐምሌ 1999 - ሰኔ 2000	125.6	135.4	115.6	113.2	101.2	109.2	120.9	124.5	115.8	105.5	116.8	108.2	102.9	July 2007 - June 2008	
2000														2007/2008	
መስከረም 2000	116.7	123.5	109.8	105.7	100.7	103.1	117.8	111.8	102.2	103.1	110.7	105.3	100.0	September "	
ጥቅምት 2000	116.6	121.5	111.6	105.8	100.7	105.1	117.6	118.8	112.9	103.1	109.7	106.3	101.0	October "	
ኅዳር 2000	116.8	121.2	112.4	109.6	100.7	105.5	117.2	121.0	114.3	103.3	114.6	105.6	101.0	November "	
ታህሳስ 2000	119.0	123.3	114.5	111.7	100.7	109.8	118.3	123.6	119.8	103.1	116.4	106.5	105.2	December "	
ጥር 2000	122.2	128.9	115.2	110.5	100.7	109.6	117.2	129.4	121.0	103.2	117.9	107.7	106.3	January 2008	
ፀደቅት 2000	126.7	135.9	117.2	120.9	100.7	111.8	117.5	130.3	122.8	109.9	120.4	109.7	104.2	February "	
መጋቢት 2000	132.8	146.2	119.0	118.2	100.7	110.8	122.8	132.3	123.2	109.9	120.2	109.9	106.3	March "	
ሚያዝያ 2000	135.1	148.5	121.4	118.6	100.7	113.7	126.6	136.2	120.8	109.9	121.0	110.6	103.1	April "	
ግንቦት 2000	143.2	161.8	124.1	121.4	103.6	121.2	128.8	136.7	123.7	109.1	123.3	111.0	103.1	May "	
ሰኔ 2000	153.4	180.5	125.6	124.5	103.6	115.6	136.7	140.3	124.1	105.4	123.4	111.1	104.6	June "	
2001														2008/2009	
ሐምሌ 2000	160.4	192.8	126.9	153.3	108.1	113.9	137.4	142.2	126.8	105.4	128.0	113.7	106.3	July 2008	
ነሐሴ 2000	167.9	204.3	130.4	155.3	106.7	117.1	143.1	143.9	139.6	105.4	129.6	114.7	106.3	August "	
መስከረም 2001	168.4	204.4	131.3	156.3	112.6	120.7	142.0	146.5	138.9	105.5	127.7	118.5	106.3	September "	
ጥቅምት 2001	169.8	205.4	133.1	157.0	112.6	124.9	142.8	150.6	138.0	107.4	126.3	116.7	106.3	October "	
ኅዳር 2001	167.4	200.7	133.2	157.0	108.6	126.4	139.7	154.6	138.0	100.7	137.5	118.5	106.3	November "	
ታህሳስ 2001	166.5	197.8	134.2	157.0	112.6	129.3	139.1	156.2	138.2	99.2	141.7	119.4	106.3	December "	
ጥር 2001	164.9	195.8	133.1	155.2	114.5	129.8	136.5	154.4	142.3	98.3	141.1	118.3	106.3	January 2009	

ወገጠራዎች ዓሳ፡- ጠቅላላ የ ሽግግሮች ዓጋ መጠነኛ ሊንደክስ በሥነ የተካተቱ ክፍሎች ለሐረሪ ክልላዊ መገገሥት ታህሳስ 1999 = 100

Table 9a: General Consumer Price Index and Its Components for the Harari People Regional State December 2006 = 100

ወርና ዓመት	ጠቅላላ ሊንደክስ	ጠቅላላ የምግብ ሊንደክስ	ጠቅላላ የምግብ ክፍል ሊንደክስ	Non-food Consumer Price Index Components											Month and Year
				መጠን	ሊጃራና ትምባሆ	ልብና መጫጊያ	የቤት ኪራይ የቤት መሥሪያ ስቃዎች፣ውሃ፣ ነጻኛናፕይል	የቤት ስቃዎች የቤት ግዝጊታዎች የቤት ተሳታፊዎች የቤት ሠራተኛ ደመወዝ	ሕክምና	ትራንስፖርትና መገናኛ	መዝናኛና ትምህርት	የገልጻ ጽጌ ስቃዎች	ሌሎች ስቃዎች		
General Index	Food Total	Non-Food Total	Beverages	Cigarettes and Tobacco	Clothing and Footwear	House Rent, Construction Materials, Water, and Fuel and Power	Furniture, Furnishings, Household Equipment and Operation	Medical Care and Health	Transport and Communication	Recreation, Entertainment and Education	Personal Care and Effects	Miscellaneous Goods			
ታህሳስ 1999	100.0	100.0	100.0	100.0	100.0	100.0	100.0	100.0	100.0	100.0	100.0	100.0	100.0	100.0	December 2006
ሐምሌ 1999 - ሰኔ 2000	119.1	130.4	108.5	107.9	106.4	111.0	108.8	109.1	99.7	108.8	102.4	117.1	100.7	100.7	July 2007 - June 2008
2000															2007/2008
መስከረም 2000	108.9	115.6	102.7	107.6	104.5	102.6	101.6	104.0	101.6	100.0	101.3	111.6	100.0	100.0	September "
ጥቅምት 2000	110.1	116.5	104.2	107.6	104.5	107.6	101.6	105.2	101.0	100.0	104.1	114.4	100.0	100.0	October "
ገዳር 2000	109.1	114.8	103.8	107.6	104.5	107.3	101.6	105.1	102.8	100.0	100.4	114.2	100.0	100.0	November "
ታህሳስ 2000	109.3	116.2	102.7	108.6	104.5	108.3	97.7	104.6	102.4	100.0	100.6	113.4	100.0	100.0	December "
ጥር 2000	111.8	119.5	104.6	105.5	104.5	110.8	102.4	104.2	102.8	100.0	100.9	115.8	96.7	96.7	January 2008
የካቲት 2000	116.6	124.4	109.2	105.5	104.5	113.0	106.7	111.8	103.1	121.2	101.2	118.6	96.7	96.7	February "
መጋቢት 2000	123.6	134.9	113.0	107.5	104.5	116.5	115.1	113.8	94.2	121.2	100.3	121.4	98.5	98.5	March "
ሚያዝያ 2000	127.5	139.9	115.9	109.5	106.8	117.9	120.0	115.7	94.4	121.2	105.7	122.8	99.4	99.4	April "
ጥንቅት 2000	144.4	169.0	121.4	112.8	111.1	124.3	128.3	121.6	96.3	121.2	105.9	125.7	104.9	104.9	May "
ሰኔ 2000	156.2	191.2	123.5	112.8	118.0	130.3	127.9	123.0	97.1	121.2	106.9	128.3	113.3	113.3	June "
2001															2008/2009
ሐምሌ 2000	163.7	201.0	128.8	154.2	129.8	134.3	130.6	124.1	98.7	130.4	106.9	129.5	116.6	116.6	July 2008
ኔሐሴ 2000	170.1	214.3	128.9	153.3	123.6	135.7	129.6	126.5	98.0	130.4	108.1	130.7	116.0	116.0	August "
መስከረም 2001	171.6	213.9	132.0	153.5	123.6	143.8	130.9	128.2	99.3	130.4	115.2	129.1	118.8	118.8	September "
ጥቅምት 2001	173.6	213.9	136.0	156.8	123.6	145.2	139.2	132.0	106.8	131.8	114.5	134.9	118.3	118.3	October "
ገዳር 2001	169.4	207.3	134.0	160.7	123.6	145.4	132.6	130.1	107.6	130.8	115.1	139.2	118.8	118.8	November "
ታህሳስ 2001	166.1	198.7	135.7	160.8	151.9	144.2	134.1	132.0	107.3	129.4	117.0	140.1	120.1	120.1	December "
ጥር 2001	164.9	195.2	136.7	159.2	180.7	152.7	128.5	137.9	107.6	118.7	118.7	139.0	117.3	117.3	January 2009

ወንጠራዥ 100:- ጠቅላላ የ ስግግር ዋጋ መመዘኛ ኢንዱስትሪ ቢሮ የተካተቱ ክፍሎች ለአርጋዥ ክልላዊ መገገሚያ ታህሳስ 1999 = 100

Table 10a: General Consumer Price Index and Its Components for the Oromiya Regional State December 2006 = 100

ወርና ዓመት	ጠቅላላ ኢንዱስትሪ	ጠቅላላ የምግብ ኢንዱስትሪ	ጠቅላላ የምግብ ክፍል ኢንዱስትሪ	Non-food Consumer Price Index Components											Month and Year
				መጠን	ቢዳራና ትምህርት	ላብሰናት	የቤት ኪራይና የቤት መሥሪያ ስራዎች+ውሃ ነጻጅናገደል	የቤት ስራዎች የቤት ግንባራዎች የቤት ተሳታፊዎች የቤት ሠራተኛ ደመወዝ	ሕክምና	ትራንስፖርትና ጠገናኛ	መዘናኛና ትምህርት	የግል ገንባታና የግል ጽግራ ስራዎች	ሌሎች ስራዎች		
	General Index	Food Total	Non-Food Total	Beverages	Cigarettes and Tobacco	Clothing and Footwear	House Rent, Construction Materials, Water, and Fuel and Power	Furniture, Furnishings, Household Equipment and Operation	Medical Care and Health	Transport and Communication	Recreation, Entertainment and Education	Personal Care and Effects	Miscellaneous Goods		
ታህሳስ 1999	100.0	100.0	100.0	100.0	100.0	100.0	100.0	100.0	100.0	100.0	100.0	100.0	100.0	100.0	December 2006
ሐምሌ 1999 - ሰኔ 2000	129.0	138.7	115.0	116.5	108.2	118.7	113.6	123.7	108.9	103.3	107.2	113.4	103.2	July 2007 - June 2008	
2000														2007/2008	
መስከረም 2000	114.3	119.2	107.4	104.7	101.9	112.3	105.4	114.3	103.0	99.8	104.5	107.4	101.3	September "	
ጥቅምት 2000	116.6	122.9	107.4	105.4	100.9	114.0	104.6	113.3	102.6	100.6	106.1	106.7	101.6	October "	
ኅዳር 2000	117.4	123.1	109.3	108.0	101.3	116.2	106.6	115.7	106.8	102.5	105.5	106.4	101.4	November "	
ታህሳስ 2000	119.2	125.9	109.5	109.9	100.7	116.0	106.5	118.1	105.5	100.0	105.4	107.1	98.0	December "	
ጥር 2000	121.2	128.3	110.9	109.6	102.8	118.2	107.0	122.6	108.4	99.0	108.1	109.3	99.9	January 2008	
ፀደቅት 2000	128.4	136.2	117.1	113.0	112.5	121.6	115.9	129.0	111.6	107.6	108.2	112.9	101.5	February "	
መጋቢት 2000	139.4	151.5	121.9	123.0	122.1	123.0	121.8	133.9	113.1	107.3	111.5	118.9	105.9	March "	
ሚያዝያ 2000	141.9	154.4	123.8	126.4	114.2	123.3	124.5	137.0	114.8	107.8	111.8	121.1	106.3	April "	
ግንቦት 2000	154.6	173.3	127.6	132.9	116.7	130.8	126.6	140.1	116.9	107.8	110.2	128.7	111.7	May "	
ሰኔ 2000	173.1	201.0	132.9	154.6	120.1	131.8	133.0	140.3	120.9	108.2	116.0	131.8	110.7	June "	
2001														2008/2009	
ሐምሌ 2000	188.3	223.8	136.9	168.1	125.6	133.9	135.7	145.8	123.5	108.2	119.9	133.8	115.8	July 2008	
ነሐሴ 2000	190.4	224.8	140.7	177.0	134.2	138.1	138.9	148.0	127.1	108.2	123.6	140.6	116.1	August "	
መስከረም 2001	190.9	226.0	140.1	174.6	133.4	139.6	136.5	148.8	128.8	108.2	124.4	139.8	120.8	September "	
ጥቅምት 2001	187.9	217.9	144.5	180.7	134.6	142.5	141.8	151.9	130.8	120.9	125.9	142.0	118.8	October "	
ኅዳር 2001	179.8	204.1	144.6	181.3	135.0	148.3	139.1	153.4	132.8	113.6	126.1	144.9	117.1	November "	
ታህሳስ 2001	168.2	183.9	145.5	179.8	137.0	149.9	142.7	152.4	130.5	107.3	125.4	145.7	113.4	December "	
ጥር 2001	171.7	188.9	146.8	188.6	141.5	151.8	142.8	153.0	131.6	102.0	124.3	147.7	114.4	January 2009	

ሠንጠረዥ 11ሀ- ጠቅላላ የ ሽንገቶች ዋጋ መመዘኛ ኢንዱስትሪ ቢሥሩ የተካተቱ ክፍሎች ለደብዳቤ ከላላዊ መገገሚያ ታህሳስ 1999 = 100

Table 11a: General Consumer Price Index and Its Components for the SNNP Regional State
December 2006= 100

ወርና ዓመት	ጠቅላላ ኢንዱስትሪ General Index	ጠቅላላ የምግብ ኢንዱስትሪ Food Total	ጠቅላላ የምግብ ካልሆኑ ኢንዱስትሪ Non-Food Total	Non-food Consumer Price Index Components											Month and Year
				ምግብ ካልሆኑ የኢንዱስትሪ ክፍሎች Beverages	ሲጃራና ትምባህር Cigarettes and Tobacco	ላብስና መጫጫያ Clothing and Footwear	የቤት ኪራይ የቤት መሥሪያ ስቃዎች፣ውሃ፣ ነጻጅናጥይል House Rent, Construction Materials, Water, and Fuel and Power	የቤት ስቃዎች የቤት ግንባራዎች የቤት ተሳታፊዎች የቤት ሠራተኛ ደመወዝ Furniture, Furnishings, Household Equipment and Operation	ሕክምና Medical Care and Health	ትራንስፖርትና ጠገናኛ Transport and Communication	መዝናኛና ትምህርት Recreation, Entertainment and Education	የግል ንጽባናና የግል ጽግራ ስቃዎች Personal Care and Effects	ሌሎች ስቃዎች Miscellaneous Goods		
ታህሳስ 1999	100.0	100.0	100.0	100.0	100.0	100.0	100.0	100.0	100.0	100.0	100.0	100.0	100.0	100.0	December 2006
ሐምሌ 1999 - ሰኔ 2000	125.6	131.1	118.0	118.6	104.0	117.2	117.2	117.2	134.3	109.2	124.5	106.8	106.9	106.1	July 2007 - June 2008
2000															2007/2008
መስከረም 2000	110.9	112.8	108.2	110.7	95.6	111.2	103.2	120.9	110.7	115.1	106.6	102.5	105.7	September "	
ጥቅምት 2000	113.4	114.6	111.7	111.8	95.4	111.2	110.0	126.5	109.7	112.1	107.3	103.3	105.7	October "	
ኅዳር 2000	113.6	114.2	112.7	112.4	95.8	113.1	110.9	129.9	101.2	113.0	106.9	101.4	106.9	November "	
ታህሳስ 2000	115.3	117.0	113.0	114.5	94.4	116.2	110.5	126.5	106.3	113.3	101.9	103.6	106.9	December "	
ጥር 2000	117.6	119.9	114.4	115.7	96.3	116.5	112.7	126.1	106.3	113.5	105.3	106.7	106.9	January 2008	
ፀሐይት 2000	122.6	125.8	118.2	119.7	111.8	118.7	114.4	139.0	107.7	140.6	107.5	107.9	106.9	February "	
መጋቢት 2000	135.9	142.8	126.4	122.6	119.7	121.0	129.9	143.9	110.0	140.9	109.4	109.9	106.9	March "	
ሚያዝያ 2000	139.1	148.0	127.0	123.0	116.0	122.8	129.4	148.0	111.0	139.6	109.3	113.6	106.9	April "	
ግንቦት 2000	148.0	160.4	131.0	128.4	115.5	127.4	134.4	150.9	114.8	139.6	109.0	113.2	106.9	May "	
ሰኔ 2000	174.7	199.4	140.7	146.2	116.0	134.1	146.4	160.4	116.1	139.6	109.1	118.7	109.2	June "	
2001															2008/2009
ሐምሌ 2000	184.1	214.7	141.9	171.8	126.2	136.8	141.3	159.7	112.1	139.6	110.0	123.0	108.0	July 2008	
ነሐሴ 2000	185.3	214.0	145.9	171.8	128.0	139.4	147.5	165.4	112.0	139.6	111.8	122.5	112.6	August "	
መስከረም 2001	187.5	215.4	149.2	180.3	127.6	143.8	150.3	167.6	116.8	139.6	112.5	123.7	110.4	September "	
ጥቅምት 2001	181.1	201.6	152.8	182.7	128.2	147.0	155.1	170.8	115.9	147.7	114.9	124.8	110.3	October "	
ኅዳር 2001	172.3	186.0	153.4	178.0	130.8	151.6	154.8	171.3	116.4	143.8	120.3	129.0	112.6	November "	
ታህሳስ 2001	164.9	173.5	153.1	177.3	131.5	156.6	152.0	174.5	116.6	136.3	121.4	126.6	112.6	December "	
ጥር 2001	164.5	172.6	153.5	175.4	130.1	159.1	152.4	172.9	115.8	131.3	127.4	127.0	112.6	January 2009	

ወንጠራዎች 12ሁ-ጠቅላላ የ ሽግግሮች ዋጋ መመዘኛ ሊንደክስ በሥራ የተካተቱ ክፍሎች ለሰገሊ ክልል መገንባት
 ታህሳስ 1999 = 100

Table 12a: General Consumer Price Index and Its Components for the Somali Regional State
 December 2006 = 100

ወርና ዓመት	ጠቅላላ ሊንደክስ General Index	ጠቅላላ የምግብ ሊንደክስ Food Total	ጠቅላላ የምግብ ነፃ ሊንደክስ Non-Food Total	Non-food Consumer Price Index Components											Month and Year	
				መጠን Beverages	ሲጃራና ትምባሆ Cigarettes and Tobacco	ላብሰና መጫጊያ Clothing and Footwear	የቤት ኪራይ የቤት መሥሪያ ስቃዎች+ውሃ ነጻጅናሃይል House Rent, Construction Materials, Water, and Fuel and Power	የቤት ስቃዎች የቤት ግንባታዎች የቤት ተሳታፊዎች የቤት ሠራተኛ ደመወዝ Furniture, Furnishings, Household Equipment and Operation	ሕክምና Medical Care and Health	ትራንስፖርትና ጫና Transport and Communication	መዝናኛና ትምህርት Recreation, Entertainment and Education	የግል ንጹህና የግል ጽጌ ስቃዎች Personal Care and Effects	ሌሎች ስቃዎች Miscellaneous Goods			
ታህሳስ 1999	100.0	100.0	100.0	100.0	100.0	100.0	100.0	100.0	100.0	100.0	100.0	100.0	100.0	100.0	100.0	December 2006
ሐምሌ 1999 - ሰኔ 2000	118.5	124.6	108.5	105.8	109.2	111.4	107.9	107.2	133.1	103.5	100.8	99.7	100.8	100.8	100.8	July 2007 - June 2008
2000																2007/2008
መስከረም 2000	107.4	110.7	101.9	102.2	109.0	101.7	100.2	98.0	129.7	101.6	99.0	100.2	100.0	100.0	100.0	September "
ጥቅምት 2000	110.1	113.0	105.4	105.0	112.3	103.0	106.5	102.5	134.4	96.0	96.3	97.7	102.1	102.1	102.1	October "
ኅዳር 2000	109.6	112.2	105.3	105.8	112.3	110.4	102.1	100.6	132.7	101.6	98.3	99.1	99.8	99.8	99.8	November "
ታህሳስ 2000	109.4	111.5	106.1	108.8	109.0	109.6	104.8	100.7	133.9	99.8	100.4	100.8	102.2	102.2	102.2	December "
ጥር 2000	111.9	115.1	106.8	107.5	109.0	110.7	106.3	99.3	134.4	101.3	100.1	99.5	102.5	102.5	102.5	January 2008
ፀደቅት 2000	121.6	128.5	110.5	106.8	110.5	111.6	111.8	108.2	133.0	106.2	103.6	98.0	102.3	102.3	102.3	February "
መጋቢት 2000	125.3	133.2	112.4	105.9	112.3	116.1	112.4	110.3	135.6	108.1	107.7	99.5	102.3	102.3	102.3	March "
ሚያዝያ 2000	127.3	136.3	112.7	105.2	109.0	117.1	112.0	113.9	137.8	109.2	105.0	101.4	100.7	100.7	100.7	April "
ግንቦት 2000	136.4	149.3	115.3	106.2	109.0	124.4	111.9	124.4	134.9	106.0	103.0	102.3	102.7	102.7	102.7	May "
ሰኔ 2000	151.5	171.1	119.4	108.7	105.9	124.8	120.4	127.8	142.1	112.9	101.6	102.3	102.7	102.7	102.7	June "
2001																2008/2009
ሐምሌ 2000	167.8	198.2	118.3	110.0	113.6	121.0	116.0	130.9	142.1	112.9	101.5	108.1	113.3	113.3	113.3	July 2008
ነሐሴ 2000	174.6	208.6	119.2	127.0	116.1	122.6	114.9	131.4	151.4	112.9	101.7	110.0	113.3	113.3	113.3	August "
መስከረም 2001	178.2	212.0	123.1	133.9	121.3	121.7	119.1	141.0	158.5	112.9	101.7	109.7	134.1	134.1	134.1	September "
ጥቅምት 2001	175.1	202.5	130.4	133.2	126.5	125.6	132.7	140.6	163.1	117.9	105.6	113.8	134.1	134.1	134.1	October "
ኅዳር 2001	170.1	193.3	132.3	133.3	123.1	127.1	136.7	141.2	163.7	117.9	108.6	116.1	134.1	134.1	134.1	November "
ታህሳስ 2001	154.8	170.6	129.1	133.2	123.1	127.3	128.3	145.0	152.4	113.7	109.3	119.3	134.1	134.1	134.1	December "
ጥር 2001	164.3	185.4	129.9	133.2	123.1	126.4	131.0	146.6	140.0	116.0	108.1	119.1	134.1	134.1	134.1	January 2009

ሠንጠረዥ 130:- ጠቅላላ የ ስግግር ዋጋ መመዘኛ ኢንዱስትሪ ቢሥሩ የተከተቱ ክፍሎች ለትግራይ ክልል መገንጠት ታህሳስ 1999 = 100

Table 13a: General Consumer Price Index and Its Components for the Tigray Regional State
December 2006 = 100

ወርና ዓመት	ጠቅላላ ኢንዱስትሪ General Index	ጠቅላላ የምግብ ኢንዱስትሪ Food Total	ጠቅላላ የምግብ ክፍል ኢንዱስትሪ Non-Food Total	የምግብ ክፍል የኢንዱስትሪ ክፍሎች Non-food Consumer Price Index Components											Month and Year
				መጠን Beverages	ቢዳራና ትምባህ Cigarettes and Tobacco	ላብስና መጫጫያ Clothing and Footwear	የቤት ኪራይ የቤት መሥሪያ ስቃዎች፣ውሃ፣ ነጻጅናሃይል House Rent, Construction Materials, Water, and Fuel and Power	የቤት ስቃዎች የቤት ግንባታዎች የቤት ተሳታፊዎች የቤት ሠራተኛ ደመወዝ Furniture, Furnishings, Household Equipment and Operation	ሕክምና Medical Care and Health	ትራንስፖርትና መገናኛ Transport and Communication	መዘናኛና ትምህርት Recreation, Entertainment and Education	የግል ንጽባናና የግል ጽግራ ስቃዎች Personal Care and Effects	ሌሎች ስቃዎች Miscellaneous Goods		
ታህሳስ 1999	100.0	100.0	100.0	100.0	100.0	100.0	100.0	100.0	100.0	100.0	100.0	100.0	100.0	100.0	December 2006
ሐምሌ 1999 - ሰኔ 2000	130.1	143.4	111.7	112.2	101.6	119.7	107.8	120.2	104.7	99.1	105.0	105.8	116.0	116.0	July 2007 - June 2008
2000															2007/2008
መስከረም 2000	121.4	131.5	107.5	103.5	101.6	117.8	102.2	110.9	108.9	95.5	106.3	107.1	113.1	113.1	September "
ጥቅምት 2000	125.7	134.0	114.2	101.9	96.5	118.7	117.8	113.7	103.9	93.6	103.9	108.0	115.9	115.9	October "
ኅዳር 2000	120.1	129.8	106.7	99.3	96.8	117.1	102.2	114.7	103.8	93.1	105.1	94.6	113.9	113.9	November "
ታህሳስ 2000	120.7	130.8	106.7	97.1	96.9	114.0	103.6	116.0	103.0	93.1	106.1	97.5	112.7	112.7	December "
ጥር 2000	122.6	132.3	109.2	106.0	94.8	117.1	106.2	116.3	102.2	93.7	104.0	102.1	115.4	115.4	January 2008
ፀደቅት 2000	127.7	139.5	111.5	113.0	100.3	116.3	107.0	122.3	104.3	105.9	105.3	108.5	116.6	116.6	February "
መጋቢት 2000	137.7	155.2	113.8	117.6	108.8	120.1	109.0	126.4	101.7	105.9	105.8	109.9	116.6	116.6	March "
ሚያዝያ 2000	139.7	156.5	116.6	121.5	106.5	128.2	108.8	129.6	104.6	105.6	107.6	114.2	118.1	118.1	April "
ግንቦት 2000	146.6	166.7	118.9	125.5	106.8	128.2	112.5	135.7	104.0	105.6	105.7	115.4	118.8	118.8	May "
ሰኔ 2000	173.0	207.2	125.9	162.2	105.4	132.1	123.4	141.9	105.9	105.6	109.9	103.5	125.5	125.5	June "
2001															2008/2009
ሐምሌ 2000	187.5	230.2	128.7	190.7	109.1	138.7	123.4	139.9	101.0	105.6	108.3	114.8	127.2	127.2	July 2008
ነሐሴ 2000	192.7	237.7	130.9	190.1	108.9	144.1	124.2	146.8	104.5	105.6	110.6	109.8	128.5	128.5	August "
መስከረም 2001	199.3	244.3	137.4	186.8	117.0	154.1	132.6	146.9	107.2	105.8	113.7	109.3	143.6	143.6	September "
ጥቅምት 2001	198.5	241.1	140.0	183.9	112.1	155.5	135.8	151.9	110.4	116.3	111.7	109.4	139.0	139.0	October "
ኅዳር 2001	187.8	223.4	138.9	179.2	109.6	160.9	130.7	150.8	100.5	112.1	114.4	115.6	140.3	140.3	November "
ታህሳስ 2001	177.8	206.8	138.0	182.8	114.2	159.9	132.1	149.0	101.2	101.1	113.8	107.6	139.3	139.3	December "
ጥር 2001	174.3	200.8	137.9	182.7	113.8	160.4	132.4	151.1	104.9	95.1	112.0	109.3	132.5	132.5	January 2009

ወገን ስርዓት 1A:- ጠቅላላ የምግብ ክፍሎች የሽያጭ ዋጋ መመዘኛ ለጋራ ስርዓት ለተፈጻሚ ደረጃ
 ታህሳስ 1999 = 100

Table 1b: Consumer Price Index of Total Food and Its Components at Country Level
 December 2006 = 100

ወር ዓመት	ጠቅላላ ምግብ	አሁን	በቤት ውስጥ የተወሰኑ የምግብ ዓይነቶች			FOOD TAKEN AT HOME							ከቤት ውጭ የተወሰኑ ምግቦች	Month and Year	
			ጥሬ ጥሬ	ዓባይ ሌሎች የተዘጋጁ ምግቦች	ሥጋ	ወተት፣ ዓይብና እንቅላል	ዘይትና ቅባቶች	እትክልትና ፍሬ-ፍሬ	ቅመግ ቅመግ	ድንችና ሌሎች ሥራ-ሥርቶች	ቃልተቆላ ቤናና ሽይ ቅጠል	ሌሎች ምግቦች			የግንባራ አገልግሎት
ታህሳስ 1999	100.0	100.0	100.0	100.0	100.0	100.0	100.0	100.0	100.0	100.0	100.0	100.0	100.0	100.0	December 2006
ሐምሌ 1999 - ሰኔ 2000	137.2	137.2	124.1	137.6	120.0	117.7	152.6	142.0	325.9	125.7	124.5	104.7	113.9	118.7	July 2007 - June 2008
2000															2007/2008
መስከረም 2000	121.9	112.9	114.8	122.1	113.6	105.1	131.4	117.3	361.3	104.9	115.4	95.1	110.4	113.9	September "
ጥቅምት 2000	124.4	116.5	115.7	123.0	111.6	108.5	139.6	124.2	372.3	104.5	117.2	95.3	109.8	111.3	October "
ኅዳር 2000	123.8	117.5	116.0	126.9	114.8	108.3	143.0	132.3	295.6	107.9	123.7	95.1	109.8	112.5	November "
ታህሳስ 2000	125.7	119.9	116.0	126.3	115.1	110.7	145.0	138.3	294.3	114.1	121.8	95.4	110.8	114.7	December "
ጥር 2000	127.9	121.2	117.2	127.4	117.7	112.1	149.0	146.6	295.2	122.1	123.1	97.4	111.8	115.8	January 2008
የኮቲት 2000	133.9	126.1	120.7	140.5	120.7	121.1	160.3	151.4	313.5	132.3	126.9	106.3	115.3	119.0	February "
መገቢት 2000	146.9	146.9	129.6	147.2	124.6	126.6	168.3	173.3	327.7	141.8	131.1	116.4	117.2	123.2	March "
ጊዮን 2000	149.8	151.3	131.6	148.8	126.1	129.3	172.3	172.3	333.0	145.0	132.4	111.8	118.3	125.3	April "
ግንቦት 2000	166.3	182.4	139.7	160.5	133.6	135.6	184.8	173.1	353.5	151.4	137.1	118.5	121.7	128.4	May "
ሰኔ 2000	195.2	238.1	160.5	195.0	141.2	143.2	184.2	148.8	395.3	178.0	141.3	127.3	122.6	135.9	June "
2001															2008/2009
ሐምሌ 2000	216.6	285.9	172.7	211.8	144.0	145.2	181.6	140.0	415.8	178.0	139.1	137.5	126.1	140.1	July 2008
ክሌሌ 2000	218.5	287.5	173.3	223.2	145.4	148.6	176.5	153.1	412.8	177.6	138.7	147.1	125.8	142.8	August "
መስከረም 2001	220.6	290.2	175.9	225.0	151.3	155.4	181.1	156.8	390.9	178.4	141.2	149.6	127.4	146.6	September "
ጥቅምት 2001	214.3	277.6	176.8	231.2	150.4	157.5	178.1	150.5	351.9	177.0	141.9	147.3	128.6	148.0	October "
ኅዳር 2001	202.2	252.1	173.9	234.2	148.1	156.0	172.2	145.8	314.4	175.6	141.3	154.3	127.9	148.3	November "
ታህሳስ 2001	184.3	214.3	162.9	225.0	146.6	150.6	166.2	147.0	275.7	175.7	138.6	158.4	126.3	149.9	December "
ጥር 2001	185.2	215.2	162.6	224.1	147.3	157.5	163.8	158.5	229.0	186.6	140.4	171.7	125.6	152.8	January 2009

ወጪ ስርዓት ላይ የምግብ ዋጋ መመዘኛ ለገቢዎች ስርዓት ለገጠና ለገጠና እና በክልሎች ደረጃ
 ታህሳስ 1999 = 100

Table 2b: Summary of Consumer Price Indices of Food at Country and Regional Levels
 December 2006=100

ወርና ዓመት	Reporting Level												Month and Year
	Eth.	A.A.	Afar	Amhara	B.Gumuz	D.Dawa	Gambela	Harari	Oromia	SNNP	Somalia	Tigray	
ታህሳስ 1999	100.0	100.0	100.0	100.0	100.0	100.0	100.0	100.0	100.0	100.0	100.0	100.0	December 2006
ሐምሌ 1999 - ሰኔ 2000	137.2	134.8	136.1	139.6	148.2	135.4	133.8	130.4	138.7	131.1	124.6	143.4	July 2007 - June 2008
2000													2007/2008
ሐምሌ 1999	113.0	116.3	118.7	116.1	114.9	113.6	112.3	107.9	112.4	108.3	105.0	114.7	July "
ክሐሴ 1999	118.1	120.9	125.5	124.8	123.2	120.1	120.9	114.9	116.4	110.1	109.3	122.7	August "
መስከረም 2000	121.9	126.0	128.5	130.1	133.4	123.5	125.3	115.6	119.2	112.8	110.7	131.5	September "
ጥቅምት 2000	124.4	124.6	129.1	132.3	134.6	121.5	124.8	116.5	122.9	114.6	113.0	134.0	October "
ኅዳር 2000	123.8	118.1	126.5	131.4	135.7	121.2	126.5	114.8	123.1	114.2	112.2	129.8	November "
ታህሳስ 2000	125.7	123.2	127.8	130.8	139.1	123.3	126.6	116.2	125.9	117.0	111.5	130.8	December "
ጥር 2000	127.9	124.3	128.7	132.2	146.6	128.9	128.8	119.5	128.3	119.9	115.1	132.3	January 2008
ፀሐይት 2000	133.9	131.1	131.1	134.9	154.8	135.9	133.5	124.4	136.2	125.8	128.5	139.5	February "
መገቢት 2000	146.9	142.6	137.9	142.5	161.2	146.2	134.4	134.9	151.5	142.8	133.2	155.2	March "
ጊዮርጊስ 2000	149.8	143.2	139.4	145.0	160.0	148.5	131.4	139.9	154.4	148.0	136.3	156.5	April "
ግንቦት 2000	166.3	163.5	161.9	164.3	167.9	161.8	151.6	169.0	173.3	160.4	149.3	166.7	May "
ሰኔ 2000	195.2	183.9	178.4	190.4	206.4	180.5	189.6	191.2	201.0	199.4	171.1	207.2	June "
2001													2008/2009
ሐምሌ 2000	216.6	195.2	198.7	216.5	246.8	192.8	248.8	201.0	223.8	214.7	198.2	230.2	July 2008
ክሐሴ 2000	218.5	197.5	200.6	218.0	262.9	204.3	276.8	214.3	224.8	214.0	208.6	237.7	August "
መስከረም 2001	220.6	198.8	201.0	221.4	272.8	204.4	269.0	213.9	226.0	215.4	212.0	244.3	September "
ጥቅምት 2001	214.3	196.8	200.0	220.9	246.6	205.4	271.2	213.9	217.9	201.6	202.5	241.1	October "
ኅዳር 2001	202.2	194.8	192.5	212.2	237.8	200.7	224.5	207.3	204.1	186.0	193.3	223.4	November "
ታህሳስ 2001	184.3	184.8	180.2	190.7	215.0	197.8	200.8	198.7	183.9	173.5	170.6	206.8	December "
ጥር 2001	185.2	181.3	180.0	187.8	199.4	195.8	198.9	195.2	188.9	172.6	185.4	200.8	January 2009

ወገን 3 ለ፡- ጠቅላላ የሽግግር ዋጋ መመዘኛ ሊያደክሰው ይችላል። የተከተሉ ክፍሎች ለአዲስ አበባ ከተማ መስተዳድር ታህሳስ 1999 = 100

Table 3b: Consumer Price Index of Total Food and Its Components for Addis Ababa City Administration December 2006 = 100

ወርና ዓመት	ጠቅላላ የምግብ	እህል	በቤት ውስጥ የተወሰኑ የምግብ ዓይነቶች			FOOD TAKEN AT HOME					ክፍት ወጪ የተወሰኑ የምግቦች	Month and Year			
			ጥሬ ጥሬ	ባቡና ሌሎች የተዘጋጁ የምግቦች	ሥጋ	ወተት ላይ የሚገኝ ለንቁላል	ዘይትና ቅባቶች	እትክልትና ፍሬዎች	ቅመም	ደንችና ሌሎች ሥራ ሥሮች			ቃልተቆላ ቡናና ሻይ ቅጠል	ሌሎች የምግቦች	የግብረጫ አገልግሎት
ታህሳስ 1999	100.0	100.0	100.0	100.0	100.0	100.0	100.0	100.0	100.0	100.0	100.0	100.0	100.0	100.0	December 2006
ሐምሌ 1999 - ሰኔ 2000	134.8	122.2	134.5	134.6	118.9	129.4	145.3	134.2	320.3	206.6	128.5	105.9	119.7	120.6	July 2007 - June 2008
2000															2007/2008
መስከረም 2000	126.0	107.1	123.1	119.6	115.0	122.6	126.3	161.4	393.7	111.0	117.6	96.7	114.7	110.8	September "
ጥቅምት 2000	124.6	109.0	115.3	115.8	113.3	124.2	128.3	150.7	374.6	111.1	117.7	95.0	110.8	112.4	October "
ኅዳር 2000	118.1	105.6	120.7	116.9	112.7	122.4	132.5	155.4	223.7	135.6	130.3	95.8	111.7	116.6	November "
ታህሳስ 2000	123.2	107.7	123.4	117.2	115.0	122.7	137.4	150.2	286.0	156.5	131.4	98.4	122.7	120.8	December "
ጥር 2000	124.3	107.8	121.2	122.4	113.2	124.7	139.0	153.0	291.0	188.6	131.6	101.2	122.6	114.4	January 2008
የካቲት 2000	131.1	109.4	130.2	127.9	114.1	129.0	141.9	116.6	290.1	304.3	132.5	116.0	120.0	119.9	February "
መጋቢት 2000	142.6	129.7	143.7	143.1	122.3	131.0	161.8	107.3	307.9	303.0	137.2	116.1	118.6	122.3	March "
ጊዮርጊያ 2000	143.2	130.3	144.6	143.3	123.7	133.5	161.5	103.2	325.4	292.5	139.3	106.7	119.6	124.7	April "
ግንቦት 2000	163.5	150.8	163.9	185.8	133.8	143.6	187.5	101.6	353.8	343.9	140.5	115.5	136.4	143.1	May "
ሰኔ 2000	183.9	200.4	189.0	201.5	142.1	158.4	183.0	120.9	379.4	331.8	140.9	124.1	138.8	141.5	June "
2001															2008/2009
ሐምሌ 2000	195.2	213.4	197.9	215.3	152.4	168.1	175.9	161.4	394.8	324.2	141.3	136.4	139.6	146.8	July 2008
ኦገስት 2000	197.5	220.4	201.6	212.7	147.2	167.8	170.9	207.6	388.0	233.7	138.1	144.3	141.3	147.4	August "
መስከረም 2001	198.8	226.6	204.3	212.8	159.7	181.9	172.2	195.5	347.8	242.9	139.5	143.7	138.5	149.1	September "
ጥቅምት 2001	196.8	231.8	205.1	218.3	157.6	183.1	170.9	160.7	313.4	251.6	140.5	134.5	141.1	154.0	October "
ኅዳር 2001	194.8	233.4	200.6	217.3	156.0	181.4	163.5	153.3	277.4	313.2	136.0	137.2	139.2	154.8	November "
ታህሳስ 2001	184.8	204.8	191.1	214.2	150.0	179.7	161.5	154.5	271.6	263.7	133.9	149.0	137.2	153.7	December "
ጥር 2001	181.3	202.0	188.8	214.3	148.9	182.6	153.4	156.8	209.5	252.5	134.1	168.4	137.0	154.3	January 2009

ወንጠረኛ ልሳ፡- ጠቅላላ የምግብ ክፍሎች የ ሽግግር ዋጋ መመዘኛ ኢንዱስትሪ ለሌላ ገለጻ መገንጠያ
 ታህሳስ 1999 = 100

Table 4b: Consumer Price index of Total Food and Its Components for the Afar Regional State

December 2006 = 100

ወርና ዓመት	ጠቅላላ የምግብ	አህል	በቤት ውስጥ የተወለዱ የምግብ ዓይነቶች					FOOD TAKEN AT HOME							ከቤት ውጪ የተወለዱ የምግብ	Month and Year	
			ጥራጥራ	ዳቦና ሌሎች የተዘጋጁ የምግብ	ሥጋ	ወተት፣ ዓይብና እንቁላል	ዘይትና ትብቶች	እትክልትና ፍራፍራ	ትመግ ትመጥ	ደገገና ሌሎች ሥራ ሥራዎች	ያልተቆላ ቤናና ሻይ ትጠል	ሌሎች የምግብ	የግብረ-ጫ አገልግሎት	Food taken away from home			
ታህሳስ 1999	100.0	100.0	100.0	100.0	100.0	100.0	100.0	100.0	100.0	100.0	100.0	100.0	100.0	100.0	100.0	100.0	December 2006
ሐምሌ 1999 - ሰኔ 2000	136.1	124.6	147.1	127.1	140.1	139.8	151.6	138.8	341.4	151.8	105.8	94.9	101.8	121.1		December 2006	
2000																July 2007 - June 2008	
መስከረም 2000	128.5	113.8	132.6	108.3	128.6	132.5	127.3	130.5	417.4	114.2	101.5	90.9	100.4	114.6		September "	
ጥቅምት 2000	129.1	112.2	131.7	108.9	132.2	133.1	137.7	139.3	418.3	115.5	94.9	90.2	100.4	112.7		October "	
ኅዳር 2000	126.5	112.0	130.2	113.6	131.7	136.9	143.2	153.7	286.5	115.5	103.7	88.7	100.4	112.9		November "	
ታህሳስ 2000	127.8	113.1	133.0	108.5	137.2	135.9	145.0	155.9	309.6	115.5	104.4	88.2	100.4	113.4		December "	
ጥር 2000	128.7	114.5	134.8	106.1	141.1	132.6	146.8	162.9	314.7	137.0	105.8	87.5	100.4	116.2		January 2008	
የኮቲት 2000	131.1	117.2	143.8	116.1	140.7	130.7	156.9	154.7	317.7	162.6	105.4	88.9	99.5	118.8		February "	
መገቢት 2000	137.9	126.2	157.8	131.1	142.4	133.0	166.6	155.5	322.9	192.7	106.9	99.8	103.0	123.1		March "	
ግብር 2000	139.4	131.3	163.4	137.3	145.0	133.3	162.3	111.6	333.8	184.0	111.1	104.6	103.0	124.5		April "	
ግንቦት 2000	161.9	155.8	172.7	175.1	163.2	175.2	182.0	120.1	359.7	228.3	116.1	102.9	106.5	136.6		May "	
ሰኔ 2000	178.4	185.6	206.9	206.7	163.7	175.3	191.8	116.2	392.7	228.3	121.6	107.0	108.1	156.5		June "	
2001																2008/2009	
ሐምሌ 2000	198.7	222.3	218.7	219.2	170.1	196.4	188.7	154.7	452.6	242.5	130.2	109.2	113.1	162.1		July 2008	
ክሌሌ 2000	200.6	235.8	224.3	223.0	175.8	178.1	184.3	196.4	389.1	242.5	138.3	118.2	116.5	165.4		August "	
መስከረም 2001	201.0	237.1	229.5	224.7	177.4	176.4	174.0	194.0	389.7	225.1	140.2	122.9	128.2	167.8		September "	
ጥቅምት 2001	200.0	240.0	233.0	229.0	172.7	176.6	172.8	182.7	336.9	228.3	140.1	124.9	122.6	170.0		October "	
ኅዳር 2001	192.5	219.7	230.5	223.4	168.4	177.5	171.7	171.9	319.0	232.9	140.8	124.3	120.4	167.9		November "	
ታህሳስ 2001	180.2	193.5	194.0	215.7	157.5	176.5	170.0	160.5	282.7	223.7	137.0	123.1	120.4	171.1		December "	
ጥር 2001	180.0	190.1	197.1	212.8	166.8	182.7	169.4	159.7	246.1	223.3	138.8	135.6	120.4	168.1		January 2009	

ወንጠረዥ 5ሀ፡- ጠቅላላ የምግብ ክፍሎች የ ሽግግር ዋጋ መመዘኛ ኢንዱስትሪ ለአገሪቱ ክልላዊ መገንጠያ
 ታህሳስ 1999 = 100

Table 5b: Consumer Price Index of Total Food and Its Components for the Amhara Regional State
 December 2006 = 100

ወርና ዓመት	ጠቅላላ ምግብ	እህል	በቤት ውስጥ የተወለዱ የምግብ ዓይነቶች			FOOD TAKEN AT HOME					ክፍት ውጪ የተወለዱ ምግቦች	ክፍት ውጪ የተወለዱ ምግቦች	Month and Year		
			ጥራጥራ	ባቦና ሌሎች የተዘጋጁ ምግቦች	ሥጋ	ወተት+ ዓይብና እንቁላል	ዘይትና ቅባቶች	አትክልትና ፍራፍራ	ቅመግ ቅመጦች	ደንችና ሌሎች ሥራሥርቶች				ቆይታ ባቦናና ሻይ ቅጠል	ሌሎች ምግቦች
ታህሳስ 1999	100.0	100.0	100.0	100.0	100.0	100.0	100.0	100.0	100.0	100.0	100.0	100.0	100.0	100.0	December 2006
ሐምሌ 1999 - ሰኔ 2000	139.6	137.6	117.9	131.0	117.8	125.6	161.8	129.4	297.0	122.1	125.2	105.8	106.7	121.4	July 2007 - June 2008
2000															2007/2008
መስከረም 2000	130.1	122.1	112.0	115.1	109.2	120.8	139.1	129.5	342.3	95.2	106.8	96.7	108.2	112.4	September "
ጥቅምት 2000	132.3	123.6	113.3	117.1	112.7	121.6	149.8	133.7	343.5	95.4	114.1	97.9	106.5	114.4	October "
ኅዳር 2000	131.4	126.3	112.2	123.2	115.7	124.9	153.1		276.9	108.0	127.9	93.1	105.3	116.9	November "
ታህሳስ 2000	130.8	126.1	110.4	123.6	115.3	120.4	154.1	146.1	265.4	110.9	128.0	95.6	104.4	119.0	December "
ጥር 2000	132.2	128.0	109.6	124.4	116.9	119.4	159.2	148.8	262.8	114.9	132.6	95.6	104.8	120.1	January 2008
የካቲት 2000	134.9	127.3	114.5	130.6	122.2	121.2	171.2	143.8	276.6	124.1	136.6	104.1	105.8	123.9	February "
መጋቢት 2000	142.5	139.2	122.4	137.1	124.8	129.3	172.6	131.0	280.0	140.8	137.2	114.8	104.7	127.2	March "
ጊዮርጊያ 2000	145.0	142.8	123.3	140.0	124.6	131.3	182.0	125.7	285.3	139.7	136.9	115.3	106.7	128.9	April "
ግንቦት 2000	164.3	173.8	129.6	154.4	128.1	136.8	191.7	116.4	328.0	170.7	138.6	123.9	108.0	132.0	May "
ሰኔ 2000	190.4	216.1	148.5	179.8	129.5	148.7	197.4	115.5	368.1	178.3	137.3	131.8	108.8	140.0	June "
2001															2008/2009
ሐምሌ 2000	216.5	262.0	165.8	201.9	131.4	158.7	188.8	133.2	386.8	180.5	135.7	151.4	112.4	145.5	July 2008
ኦገስት 2000	218.0	261.0	172.1	207.9	132.9	178.0	191.9	158.4	376.3	185.6	137.4	155.6	111.8	149.0	August "
መስከረም 2001	221.4	269.1	172.3	210.3	141.8	174.5	189.8	154.6	346.5	184.5	137.2	157.2	115.9	157.1	September "
ጥቅምት 2001	220.9	271.0	172.9	218.1	142.2	173.6	189.7	135.7	323.6	176.4	142.8	161.0	124.9	156.3	October "
ኅዳር 2001	212.2	255.6	171.3	217.9	140.8	174.3	185.5	134.2	297.1	174.1	142.3	175.2	123.5	158.0	November "
ታህሳስ 2001	190.7	216.9	162.4	213.5	141.0	173.2	178.2	134.8	256.5	169.9	139.8	179.7	123.4	159.7	December "
ጥር 2001	187.8	215.2	160.5	214.6	142.5	175.0	178.6	138.2	214.2	165.8	140.7	196.2	120.0	161.1	January 2009

ወንጠረዥ ልሳ፡- ጠቅላላ የምግብ ክፍሎች የ ሸግጥኞች የጋ መመዘኛ ኢንዱስትሪ ለቤኔሽንጎላ ንድፍ ዘመን መገንጠያ ለ 100
 ታህሳስ 1999 = 100

Table 6b: Consumer Price Index of Total Food and Its Components for the Benishangul Gumuz Regional state
 December 2006 = 100

ወርና ዓመት	ጠቅላላ የምግብ	እህል	በቤት ውስጥ የተወለሱ የምግብ ዓይነቶች			FOOD TAKEN AT HOME					የተወለዱ የምግቦች	ክቤት ውጪ የተወለዱ የምግቦች	Month and Year		
			ጥራጥራ	ዳቦና ሌሎች የተዘጋጁ የምግቦች	ሥጋ	ወተት+ ዓይብና እንቁላል	ዘይትና ቅባቶች	አትክልትና ፍራፍራ	ቅመግ ቅመጥ	ደንችና ሌሎች ሥራሥርቶች				ቃልተቆላ ቦናና ያይ ቅጠል	ሌሎች የምግቦች
ታህሳስ 1999	100.0	100.0	100.0	100.0	100.0	100.0	100.0	100.0	100.0	100.0	100.0	100.0	100.0	100.0	December 2006
ሐምሌ 1999 - ሰኔ 2000	148.2	160.9	112.5	129.7	131.1	108.5	142.4	116.6	366.2	127.0	128.5	105.1	111.1	117.8	July 2007 - June 2008
2000															2007/2008
መስከረም 2000	133.4	132.9	112.6	121.0	127.1	103.3	126.5	117.1	381.0	116.5	124.0	99.7	109.2	107.4	September "
ጥቅምት 2000	134.6	134.9	111.5	118.8	126.7	105.1	131.9	108.0	390.0	116.1	124.8	97.0	107.8	110.7	October "
ኅዳር 2000	135.7	138.1	111.8	117.5	126.6	106.9	130.3	105.9	384.5	123.4	124.0	96.2	107.8	111.9	November "
ታህሳስ 2000	139.1	148.6	97.5	113.7	119.0	104.1	135.6	110.3	366.8	118.9	126.5	96.5	107.9	115.5	December "
ጥር 2000	146.6	160.5	106.2	123.1	125.1	106.5	139.7	115.7	360.7	126.2	130.5	105.3	112.0	116.5	January 2008
የካቲት 2000	154.8	171.6	106.6	135.1	128.4	107.7	151.1	126.7	373.8	141.1	127.1	110.2	118.8	121.6	February "
መጋቢት 2000	161.2	177.9	113.0	140.4	131.4	109.9	153.1	124.4	437.3	135.0	132.1	112.6	116.3	123.7	March "
ጊያዝያ 2000	160.0	178.2	116.3	141.7	136.6	109.4	155.0	125.6	386.5	130.1	134.2	108.3	109.2	124.8	April "
ግንቦት 2000	167.9	190.8	119.0	148.7	143.6	115.5	167.6	124.9	385.4	130.9	139.6	109.9	109.2	130.8	May "
ሰኔ 2000	206.4	272.2	116.0	168.3	155.1	125.0	171.7	116.8	392.1	161.4	134.4	125.6	115.3	139.5	June "
2001															2008/2009
ሐምሌ 2000	246.8	344.0	156.3	185.0	167.2	142.6	171.8	111.4	478.5	179.0	142.2	140.9	126.9	143.3	July 2008
ኦገስት 2000	262.9	375.6	173.4	201.0	169.3	149.6	168.1	130.3	457.4	213.5	138.9	142.8	127.1	143.8	August "
መስከረም 2001	272.8	392.5	177.9	208.8	179.3	150.7	171.2	136.1	461.2	229.9	144.1	148.7	131.7	143.4	September "
ጥቅምት 2001	246.6	341.4	158.8	219.1	181.7	153.2	169.2	135.4	401.7	214.3	139.9	146.7	135.9	142.3	October "
ኅዳር 2001	237.8	326.7	142.5	224.1	175.0	155.6	171.5	132.2	381.3	209.1	136.7	155.0	129.4	143.1	November "
ታህሳስ 2001	215.0	272.5	141.8	234.8	173.3	159.2	192.5	174.0	289.2	205.6	130.8	169.8	122.2	152.2	December "
ጥር 2001	199.4	243.7	144.2	231.2	170.7	159.9	172.4	152.7	284.7	213.9	122.9	175.5	113.5	151.6	January 2009

ወንጠረዥ 7A:- ጠቅላላ የምግብና የምግብ ክፍሎች የ ሽግግር ዋጋ መጠን ሊገለጽበት ለሰፈራዊ አስተዳደር ካውንስል
 ታህሳስ 1999 = 100

Table 7b: Consumer Price Index of Total Food and Its Coponents for the Dire Dawa Adminstrative Council
 December 2006 = 100

ወርና ዓመት	ጠቅላላ ምግብ	እህል	በቤት ውስጥ የተወሰኑ የምግብ ዓይነቶች			FOOD TAKEN AT HOME						ከቤት ውጪ የተወሰኑ ምግቦች	Month and Year		
			ጥራጥራ	ባቡና ሌሎች የተዘጋጁ ምግቦች	ሥጋ	ወተት+ ዓይብና እንቁላል	ዘይትና ቅባቶች	እትክልትና ፍራፍራ	ቅመግ ቅመጦች	ደንችና ሌሎች ሥራሥርቶች	ቃተቃላ ቡናና ሻይ ቅጠል			ሌሎች ምግቦች	የግብረግብ አገልግሎት
	Food Total	Cereals	Pulses	Bread and other Prepared Food	Meat	Milk,Cheese and Egg	Oils and Fats	Vegetables and Fruits	Spices	Potatoes, Other Tubers and Stems	Coffee (beans, whole) and Tea Leaves	Other Food Items	Milling Charges	Food taken away from home	
ታህሳስ 1999	100.0	100.0	100.0	100.0	100.0	100.0	100.0	100.0	100.0	100.0	100.0	100.0	100.0	100.0	December 2006
ሐምሌ 1999 - ሰኔ 2000	135.4	140.9	148.3	127.9	107.8	118.5	151.7	132.9	353.5	167.6	133.9	95.4	90.7	114.7	July 2007 - June 2008
2001															2007/2008
መስከረም 2000	123.5	120.7	145.3	111.2	105.8	103.7	130.6	127.8	416.7	92.2	132.7	87.6	95.3	94.3	September "
ጥቅምት 2000	121.5	118.5	131.6	104.1	102.0	104.6	140.4	129.6	416.7	95.9	131.8	88.1	95.3	94.7	October "
ኅዳር 2000	121.2	123.3	130.4	106.6	105.0	110.8	138.6	128.2	254.2	98.0	131.2	88.6	95.3	110.1	November "
ታህሳስ 2000	123.3	125.0	133.1	108.5	103.6	106.6	145.6	136.8	303.9	102.2	131.0	89.4	86.6	109.7	December "
ጥር 2000	128.9	125.9	130.0	129.9	105.5	108.8	159.3	145.8	311.1	128.0	130.6	90.9	86.6	109.9	January 2008
የካቲት 2000	135.9	133.6	143.6	133.8	106.8	118.6	160.8	153.4	340.8	239.2	129.2	99.4	86.6	116.1	February "
መገቢት 2000	146.2	147.2	146.5	144.2	106.7	122.0	165.5	139.7	337.2	243.0	149.2	102.9	86.6	141.2	March "
ጊያዝያ 2000	148.5	155.3	152.9	141.5	106.4	135.0	169.6	123.0	381.2	221.9	147.9	106.8	86.6	143.2	April "
ግንቦት 2000	161.8	183.7	175.3	158.9	125.9	152.8	185.7	118.1	413.2	322.0	137.2	106.8	86.6	134.1	May "
ሰኔ 2000	180.5	225.5	193.4	185.1	126.0	154.3	190.3	140.7	428.4	281.7	140.0	107.1	92.6	136.1	June "
2000															2008/2009
ሐምሌ 2000	192.8	240.9	200.4	191.3	130.5	157.7	197.1	165.6	453.3	278.2	150.5	110.4	95.9	167.1	July 2008
ኦገስት 2000	204.3	262.0	209.4	205.7	127.9	164.0	194.2	171.8	431.3	201.0	150.2	112.2	95.9	217.1	August "
መስከረም 2001	204.4	262.4	210.2	232.1	127.8	163.3	186.2	176.2	409.0	198.8	151.1	112.5	95.9	171.2	September "
ጥቅምት 2001	205.4	265.4	209.4	240.2	127.8	172.2	185.4	171.7	352.0	200.4	152.8	112.1	95.3	169.9	October "
ኅዳር 2001	200.7	244.8	208.9	242.3	131.1	178.7	180.7	157.1	325.4	205.3	163.3	112.5	95.3	170.0	November "
ታህሳስ 2001	197.8	233.8	199.6	246.0	128.4	176.5	176.7	153.3	341.9	208.8	173.2	114.0	95.3	154.7	December "
ጥር 2001	195.8	228.0	187.5	243.9	130.9	176.6	177.5	181.4	271.3	236.2	168.9	114.5	95.3	161.1	January 2009

ሠንጠረዥ 8ለ፡- ጠቅላላ የምግብና የምግብ ክፍሎች የ ሽግግር ዋጋ መመዘኛ ኢንዱስትሪ ለጋምቤላ ስገቦች ክልል መገንጠያ
 ታህሳስ 1999 = 100

Table 8b: Consumer Price Index of Total Food and Its Components for the Gambela Peoples Regional State
 December 2006 = 100

ወርና ዓመት	ጠቅላላ ምግብ	እህል	በቤት ውስጥ የተወለሱ የምግብ ዓይነቶች			FOOD TAKEN AT HOME						ክፍት ውጪ የተወለቱ ምግቦች	Month and Year		
			ጥራጥራ	ባቦና ሌሎች የተዘጋጁ ምግቦች	ሥጋ	ወተት+ ዓይብና እንቁላል	ዘይትና ቅባቶች	አትክልትና ፍራፍራ	ቅመግ ቅመጦች	ደገችና ሌሎች ሥራሥርቶች	ቃተቃላ ቦናና ሻይ ቅጠል			ሌሎች ምግቦች	የግብረግ አገልግሎት
	Food Total	Cereals	Pulses	Bread and other Prepared Food	Meat	Milk,Cheese and Egg	Oils and Fats	Vegetables and Fruits	Spices	Potatoes, Other Tubers and Stems	Coffee (beans, whole) and Tea Leaves	Other Food Items	Milling Charges	Food taken away from home	
ታህሳስ 1999	100.0	100.0	100.0	100.0	100.0	100.0	100.0	100.0	100.0	100.0	100.0	100.0	100.0	100.0	December 2006
ሐምሌ 1999 - ሰኔ 2000	133.8	124.8	141.2	167.1	131.8	131.5	150.1	138.5	411.3	142.3	124.0	112.4	110.4	133.2	July 2007 - June 2008
2001															2007/2008
መስከረም 2000	125.3	118.2	124.1	134.2	128.9	134.7	138.2	133.9	425.8	98.8	112.2	100.2	104.9	127.7	September "
ጥቅምት 2000	124.8	118.1	123.2	135.0	129.6	130.5	142.8	126.7	425.8	98.8	121.4	96.9	105.8	121.4	October "
ኅዳር 2000	126.5	118.5	123.1	134.7	129.1	134.5	142.6	131.9	425.8	108.7	131.5	100.1	105.8	131.5	November "
ታህሳስ 2000	126.6	117.6	125.2	136.0	126.0	134.5	147.5	133.9	425.8	125.3	122.4	107.3	105.8	133.9	December "
ጥር 2000	128.8	118.3	127.1	136.0	128.0	134.5	149.1	134.6	425.8	141.9	133.4	111.2	115.5	136.5	January 2008
የካቲት 2000	133.5	120.6	132.5	137.0	130.4	135.1	150.9	136.3	425.8	216.6	121.5	117.3	115.5	141.5	February "
መገቢት 2000	134.4	121.9	134.8	138.4	131.0	128.4	163.5	137.1	425.8	193.7	132.5	123.4	115.5	132.7	March "
ጊያዝያ 2000	131.4	118.7	133.5	141.3	131.4	127.5	161.6	138.5	425.8	158.1	135.1	116.3	115.5	128.9	April "
ግንቦት 2000	151.6	135.3	188.5	317.5	142.3	128.4	167.8	162.0	425.8	167.6	131.1	133.2	115.5	140.3	May "
ሰኔ 2000	189.6	199.0	240.0	328.4	145.4	128.1	170.4	176.5	433.9	202.4	133.6	144.9	115.5	161.8	June "
2000															2008/2009
ሐምሌ 2000	248.8	314.2	274.3	339.8	142.7	140.9	171.0	185.4	433.9	219.8	134.2	157.7	115.5	166.8	July 2008
ኤሌ 2000	276.8	370.9	275.9	343.3	143.1	148.2	169.9	185.4	433.9	237.2	135.4	156.8	115.5	166.8	August "
መስከረም 2001	269.0	338.2	309.0	373.0	144.2	170.3	167.3	228.0	433.9	237.2	132.3	155.6	129.1	166.8	September "
ጥቅምት 2001	271.2	338.0	308.1	366.5	145.2	179.6	166.3	244.8	433.9	237.2	133.5	165.9	129.1	167.8	October "
ኅዳር 2001	224.5	233.8	319.8	366.7	163.0	209.0	170.0	235.2	433.9	237.2	133.7	166.4	129.1	166.8	November "
ታህሳስ 2001	200.8	196.0	281.7	371.3	159.6	268.0	166.5	227.1	304.1	213.0	123.4	157.7	129.1	166.8	December "
ጥር 2001	198.9	198.0	281.2	361.4	158.8	226.4	169.8	217.8	219.0	212.3	123.8	165.3	132.2	166.8	January 2009

ወንጠረዥ ዓለ፡- ጠቅላላ የምግብ ክፍሎች የ ሽግግር ዋጋ መመዘኛ ሊንደክስ ለሰሪሪ ክልላዊ መንግሥት ታህሳስ 1999 = 100

Table 9b: Consumer Price Index of Total Food and Its Components for the Harari People Regional State December 2006 = 100

ወርና ዓመት	ጠቅላላ የምግብ	አህል	በቤት ውስጥ የተወሰኑ የምግብ ዓይነቶች			FOOD TAKEN AT HOME						ከቤት ውጭ የተወሰኑ የምግቦች	Month and Year		
			ጥራጥራ	ዓባና ሌሎች የተዘጋጁ የምግቦች	ሥጋ	ወተት፣ ዓይብና እንቅጣል	ዘይትና ቅባቶች	እትክልትና ፍራፍራ	ቅመግ ቅመጥ	ድንችና ሌሎች ሥራሥርቶች	ቃልተቆላ ቤናና ሻይ			ሌሎች የምግቦች	የግንቢራዊ አገልግሎት
ታህሳስ 1999	100.0	100.0	100.0	100.0	100.0	100.0	100.0	100.0	100.0	100.0	100.0	100.0	100.0	100.0	December 2006
ሐምሌ 1999 - ሰኔ 2000	130.4	128.3	129.6	124.0	112.4	120.7	160.5	154.9	312.5	182.1	119.6	101.4	101.9	123.1	July 2007 - June 2008
2001															2007/2008
መስከረም 2000	115.6	111.9	122.9	101.8	113.2	114.9	139.8	170.1	324.1	111.1	94.5	99.2	100.0	113.8	September "
ጥቅምት 2000	116.5	114.9	121.3	101.6	106.8	114.4	141.7	166.4	321.0	111.1	97.0	98.2	100.0	114.6	October "
ኅዳር 2000	114.8	112.9	121.1	103.0	103.8	110.9	141.8	181.1	242.4	111.1	96.8	95.8	100.0	113.5	November "
ታህሳስ 2000	116.2	112.8	120.4	102.2	106.8	112.9	156.6	175.1	285.7	116.7	96.3	96.6	100.0	113.5	December "
ጥር 2000	119.5	114.4	119.2	101.9	107.5	106.6	157.2	192.2	296.3	231.7	97.0	97.0	100.0	117.1	January 2008
የኮቲት 2000	124.4	120.6	133.6	122.2	109.1	117.7	170.3	142.5	315.1	286.7	95.6	98.2	100.0	120.6	February "
መገቢት 2000	134.9	130.5	133.1	139.2	111.9	122.7	179.0	137.2	314.5	277.8	115.7	110.4	100.0	132.6	March "
ጊዳር 2000	139.9	136.1	137.1	144.7	116.9	124.7	181.3	112.2	338.9	222.2	133.9	111.2	100.0	134.6	April "
ግንቦት 2000	169.0	169.3	144.3	162.8	123.7	144.8	194.6	120.9	362.8	222.2	204.1	107.9	107.7	142.7	May "
ሰኔ 2000	191.2	198.7	162.4	211.0	136.6	153.4	201.9	124.3	369.8	277.8	221.9	113.5	115.5	151.6	June "
2000															2008/2009
ሐምሌ 2000	201.0	232.6	156.0	239.9	140.0	170.4	201.5	147.8	408.5	318.9	179.6	114.9	115.5	164.0	July 2008
ክሌሌ 2000	214.3	246.6	167.1	240.2	148.4	179.7	208.0	180.0	404.2	232.2	214.3	117.3	115.5	171.9	August "
መስከረም 2001	213.9	248.3	168.7	247.9	143.5	170.6	204.1	158.6	380.6	232.2	217.2	117.3	115.5	172.1	September "
ጥቅምት 2001	213.9	245.3	170.4	256.1	150.7	173.8	196.0	153.8	339.3	232.2	220.1	117.3	115.5	176.0	October "
ኅዳር 2001	207.3	234.4	163.7	252.1	138.9	171.7	189.0	155.7	326.5	232.2	210.9	121.4	115.5	180.1	November "
ታህሳስ 2001	198.7	225.3	161.3	249.3	141.1	130.3	186.0	162.1	305.5	217.2	190.6	121.9	133.3	184.1	December "
ጥር 2001	195.2	217.1	137.5	250.5	136.5	130.6	186.7	165.8	274.4	231.7	190.3	122.2	133.3	184.4	January 2009

ወገጠረዥ 10A:- ጠቅላላ የምግብ ክፍሎች የ ሽግግር ዋጋ መጠኛ ሊገረከስ ለሊሮጊያ ክልል የምግብ ጋራ 1999 = 100

Table 10b: Consumer Price Index of Total Food and Its Components for the Oromiya Regional State December 2006 = 100

ወርና ዓመት	ጠቅላላ የምግብ	እህል	በቤት ውስጥ የተወሰኑ የምግብ ዓይነቶች			FOOD TAKEN AT HOME					ክፍት ወጪ የተወሰኑ የምግቦች	Month and Year			
			ጥራጥረ	ባብና ሌሎች የተዘጋጁ የምግቦች	ሥጋ	ወተት+ ዓይብና ለንቁላል	ዘይትና ቅባቶች	እትክልትና ፍራፍረ	ቅመግ ቅመጥ	ደገጎችና ሌሎች ሥራሥርጎች			ያልተቆላ ቤናና ሻይ ቅጠል	ሌሎች የምግቦች	የግብረጫ አገልግሎት
ታህሳስ 1999	100.0	100.0	100.0	100.0	100.0	100.0	100.0	100.0	100.0	100.0	100.0	100.0	100.0	100.0	December 2006
ሐምሌ 1999 - ሰኔ 2000	138.7	137.3	127.0	147.9	119.9	116.4	151.9	147.1	379.6	134.7	121.9	102.5	118.2	122.6	July 2007 - June 2008
2001															2007/2008
መስከረም 2000	119.2	107.8	114.0	131.2	114.0	101.8	130.0	111.1	413.8	112.8	115.0	91.5	112.0	116.2	September "
ጥቅምት 2000	122.9	113.9	114.7	130.8	107.7	104.8	140.8	117.4	424.1	112.1	116.2	92.2	112.4	115.5	October "
ኅዳር 2000	123.1	114.5	115.4	134.9	112.9	104.7	145.4	132.1	332.8	115.6	123.1	95.4	112.7	115.4	November "
ታህሳስ 2000	125.9	118.6	117.0	133.6	113.3	108.8	146.5	143.6	337.8	120.9	118.4	94.4	114.5	118.4	December "
ጥር 2000	128.3	118.8	120.1	134.3	117.8	110.9	149.9	154.1	342.6	130.0	119.7	95.7	116.9	120.4	January 2008
የካቲት 2000	136.2	126.3	123.1	156.4	119.7	122.3	157.3	166.1	374.5	142.3	122.4	103.8	121.5	122.3	February "
መጋቢት 2000	151.5	150.3	134.5	163.3	124.9	128.0	164.8	189.4	402.9	154.4	125.8	115.4	123.0	127.9	March "
ጊያዝያ 2000	154.4	154.4	137.3	165.3	126.3	130.6	169.2	189.5	406.4	159.6	126.6	107.0	124.0	130.1	April "
ግንቦት 2000	173.3	190.7	147.0	173.7	136.7	136.2	182.9	194.3	407.9	163.6	131.9	115.1	128.7	133.1	May "
ሰኔ 2000	201.0	245.1	171.1	205.6	145.8	141.3	181.9	143.5	460.3	190.4	138.8	123.8	129.0	141.2	June "
2000															2008/2009
ሐምሌ 2000	223.8	295.1	183.9	224.9	148.7	142.9	182.5	147.2	477.1	190.4	134.4	133.8	133.6	142.9	July 2008
ኦገስት 2000	224.8	297.5	177.1	242.0	149.6	143.8	171.5	154.4	478.1	191.1	131.6	145.7	132.3	146.6	August "
መስከረም 2001	226.0	297.2	180.2	243.1	153.0	152.3	180.3	157.3	465.7	186.8	135.4	145.6	133.7	147.8	September "
ጥቅምት 2001	217.9	282.4	181.3	247.3	151.7	154.9	175.3	155.5	399.9	181.8	135.6	142.2	132.1	151.4	October "
ኅዳር 2001	204.1	252.4	178.8	250.2	151.3	153.1	168.9	154.1	356.2	181.7	138.2	149.2	129.7	152.0	November "
ታህሳስ 2001	183.9	212.1	161.5	234.3	149.5	144.4	159.5	152.5	312.1	182.8	139.9	152.5	127.2	151.5	December "
ጥር 2001	188.9	216.5	163.7	236.9	149.6	152.9	157.7	174.4	261.4	208.1	142.4	168.8	129.4	159.3	January 2009

ወንጠረዥ 11A:- ጠቅላላ የምግብ ወጪ የተወሰኑ የምግብ ክፍሎች የ ሽግግር ዋጋ መወሰንና አገልግሎት ለገደብ ለገደብ ክልል መገምገም
 ታህሳስ 1999 = 100

Table 11b: Consumer Price Index of Total Food and Its Components for the SNNP Regional State
 December 2006 = 100

ወርና ዓመት	ጠቅላላ የምግብ	እህል	በቤት ውስጥ የተወሰኑ የምግብ ዓይነቶች			FOOD TAKEN AT HOME					ክፍት ወጪ የተወሰኑ የምግቦች	ክቤት ወጪ የተወሰኑ የምግቦች	Month and Year		
			ጥራጥራ	ባብና ሌሎች የተዘጋጁ የምግቦች	ሥጋ	ወተት+ ዓይብና እንቁላል	ዘይትና ቅባቶች	አትክልትና ፍራፍራ	ትመግ ቅመም	ደገችና ሌሎች ሥራሥርቶች				ቃልተቆላ ቦናና ሻይ ቅጠል	ሌሎች የምግቦች
ታህሳስ 1999	100.0	100.0	100.0	100.0	100.0	100.0	100.0	100.0	100.0	100.0	100.0	100.0	100.0	100.0	December 2006
ሐምሌ 1999 - ሰኔ 2000	131.1	136.1	122.9	126.9	121.5	119.2	143.7	146.8	264.5	117.1	132.2	112.2	106.0	107.1	July 2007 - June 2008
2001															2007/2008
መስከረም 2000	112.8	108.1	117.4	114.5	114.7	108.3	125.0	106.5	246.5	99.5	125.3	103.0	101.5	112.6	September "
ጥቅምት 2000	114.6	109.6	118.7	115.6	114.3	115.0	128.6	120.4	299.5	99.2	124.3	101.6	101.1	98.4	October "
ኅዳር 2000	114.2	110.0	119.4	117.2	115.2	113.6	130.8	121.0	247.1	100.9	126.6	100.3	101.2	98.7	November "
ታህሳስ 2000	117.0	112.3	118.7	116.7	116.2	114.0	133.9	125.2	247.4	108.2	129.4	99.6	100.4	99.8	December "
ጥር 2000	119.9	114.6	117.8	117.7	115.6	114.4	135.7	137.0	251.2	115.2	127.1	105.0	100.8	100.4	January 2008
የካቲት 2000	125.8	117.6	119.7	120.5	121.7	119.0	158.6	150.0	269.0	121.5	134.2	113.1	108.8	104.3	February "
መጋቢት 2000	142.8	147.1	124.8	126.2	125.1	125.4	168.7	201.7	269.4	128.2	142.0	125.6	111.2	108.1	March "
ጊያዝያ 2000	148.0	156.3	127.7	127.1	129.3	129.1	168.7	202.7	284.0	131.0	144.7	125.3	112.7	111.4	April "
ግንቦት 2000	160.4	184.8	133.0	139.8	134.4	131.8	174.8	201.0	293.1	135.1	147.2	129.8	114.0	111.5	May "
ሰኔ 2000	199.4	265.9	147.1	202.5	150.2	144.0	165.5	191.1	328.8	164.8	149.5	140.6	120.2	116.5	June "
2000															2008/2009
ሐምሌ 2000	214.7	316.3	148.1	202.8	153.2	141.0	164.5	132.2	349.1	164.3	154.3	148.2	120.2	121.7	July 2008
ኦገስት 2000	214.0	311.2	152.3	207.6	156.8	145.1	163.2	137.6	342.5	163.7	157.1	157.0	122.4	121.3	August "
መስከረም 2001	215.4	309.2	152.2	214.1	162.1	151.7	169.1	142.5	325.0	169.0	159.1	161.2	119.6	123.4	September "
ጥቅምት 2001	201.6	270.1	151.6	225.1	162.2	152.8	169.6	140.5	285.2	171.3	160.0	160.4	119.9	124.0	October "
ኅዳር 2001	186.0	232.7	150.7	234.1	153.2	153.3	165.2	134.6	255.8	167.9	148.7	169.9	118.6	124.5	November "
ታህሳስ 2001	173.5	199.2	158.6	237.0	150.1	153.9	161.7	141.0	225.7	168.6	131.0	173.4	117.5	128.9	December "
ጥር 2001	172.6	200.6	158.7	220.4	149.0	157.8	160.5	145.6	175.1	169.9	129.6	179.9	116.7	128.4	January 2009

ሠንጠረዥ 12b:- ጠቅላላ የምግብ ወጪ የምግብ ክፍሎች የ ሽግግር ዋጋ መለኪያ ለጊዜ ለሰዓት ክልል መገንጠያ
 ታህሳስ 1999 = 100

Table 12b: Consumer Price Index of Total Food and Its Components for the Somali Regional State
 December 2006 = 100

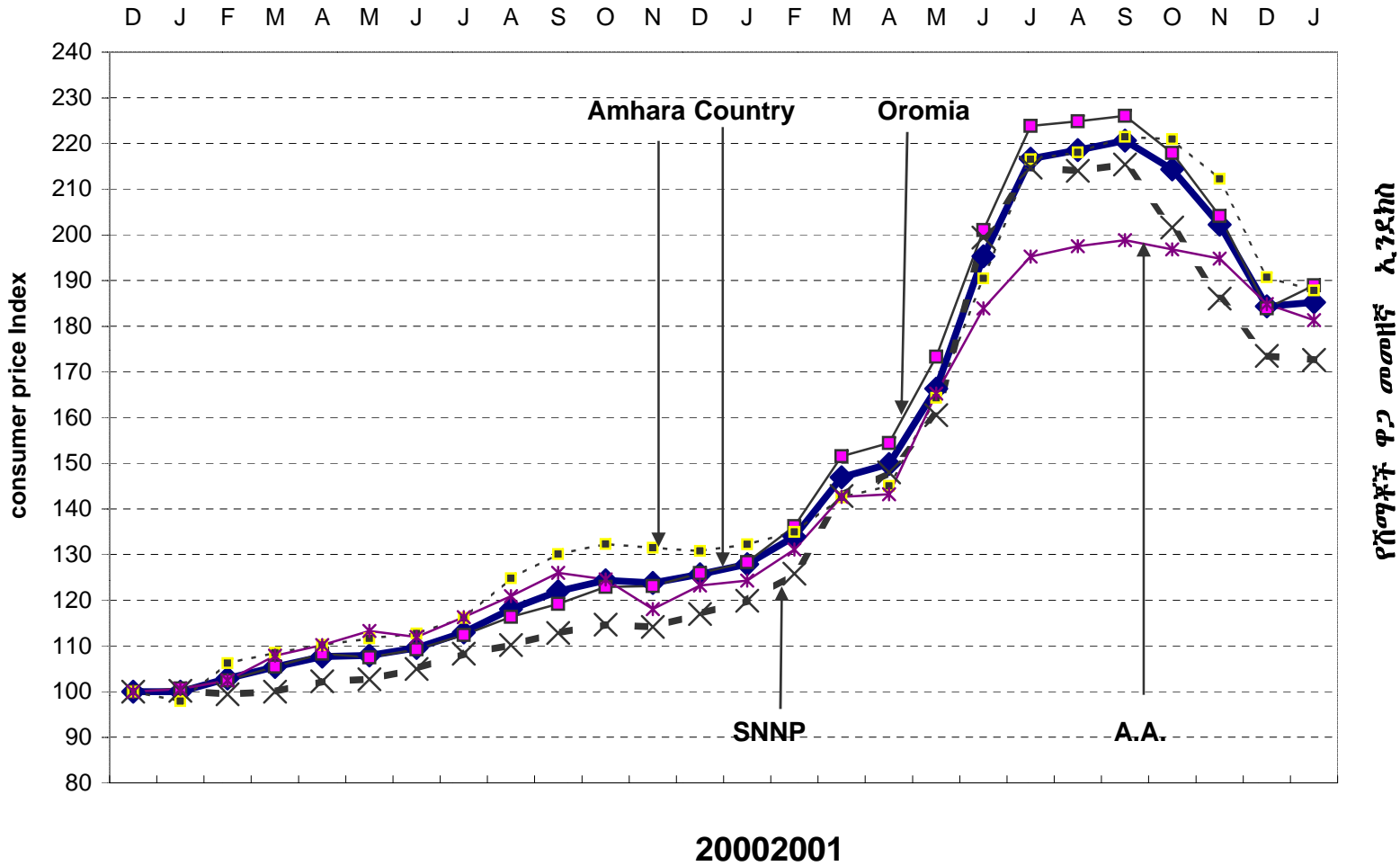
ወርና ዓመት	ጠቅላላ የምግብ	እህል	በቤት ውስጥ የተወሰኑ የምግብ ዓይነቶች			FOOD TAKEN AT HOME							ከቤት ውጭ የተወሰኑ የምግቦች	Month and Year	
			ጥራጥራ	ባቦና ሌሎች የተዘጋጁ የምግቦች	ሥጋ	ወተት+ ዓይብና እንቁላል	ዘይትና ቅባቶች	እትክልትና ፍራፍራ	ቅመግ ቅመጦች	ደንችና ሌሎች ሥራሥርቶች	ቃተቃላ ቦናና ያይ ቅጠል	ሌሎች የምግቦች			የግብረግ አገልግሎት
ታህሳስ 1999	100.0	100.0	100.0	100.0	100.0	100.0	100.0	100.0	100.0	100.0	100.0	100.0	100.0	100.0	December 2006
ሐምሌ 1999 - ሰኔ 2000	124.6	136.0	124.9	120.3	126.3	103.1	138.8	128.3	299.8	145.0	115.8	102.8	99.2	120.5	July 2007 - June 2008
2001															2007/2008
መስከረም 2000	110.7	115.2	111.2	109.2	114.4	90.1	113.7	119.1	416.7	100.7	105.2	95.6	98.2	118.3	September "
ጥቅምት 2000	113.0	117.4	115.5	108.3	136.6	91.7	128.6	118.9	416.7	99.1	102.8	98.3	96.3	116.0	October "
ኅዳር 2000	112.2	123.2	116.2	110.3	120.1	90.2	132.8	117.7	250.0	98.7	102.9	87.6	100.0	113.7	November "
ታህሳስ 2000	111.5	118.7	115.4	114.1	122.6	91.7	135.5	118.0	250.0	106.9	103.3	89.1	100.8	114.1	December "
ጥር 2000	115.1	121.4	112.8	112.4	125.1	94.0	135.3	159.6	250.0	112.1	110.3	89.0	94.2	115.5	January 2008
የካቲት 2000	128.5	138.3	122.6	123.9	130.0	110.6	146.2	151.4	250.0	156.7	123.5	102.8	94.2	117.6	February "
መጋቢት 2000	133.2	141.5	133.3	125.7	130.5	111.0	153.0	139.0	283.3	196.5	129.9	117.6	101.6	123.6	March "
ጊያዝያ 2000	136.3	145.6	136.3	126.6	130.0	112.9	160.9	134.9	291.7	196.1	135.0	118.6	103.3	122.8	April "
ግንቦት 2000	149.3	170.3	142.4	137.6	139.4	125.5	165.6	134.2	297.3	208.7	139.8	117.8	100.0	127.3	May "
ሰኔ 2000	171.1	219.8	172.5	164.5	147.1	142.6	180.8	111.1	308.3	259.7	124.5	124.9	106.2	141.2	June "
2000															2008/2009
ሐምሌ 2000	198.2	285.6	182.0	189.9	158.7	137.5	184.8	144.9	369.4	276.6	119.1	125.9	106.2	150.9	July 2008
ኦገስት 2000	208.6	301.8	190.3	200.9	162.2	159.7	186.2	162.7	388.9	221.6	119.3	130.2	104.8	149.6	August "
መስከረም 2001	212.0	300.3	192.3	205.4	163.7	164.4	182.9	165.2	333.3	190.0	126.3	156.5	106.3	151.2	September "
ጥቅምት 2001	202.5	275.9	190.2	211.8	162.1	166.2	178.3	168.0	333.3	195.2	120.3	156.6	110.1	152.1	October "
ኅዳር 2001	193.3	255.1	187.7	210.5	161.2	151.1	178.3	161.5	241.7	206.0	127.6	157.0	108.4	156.4	November "
ታህሳስ 2001	170.6	197.2	163.3	196.3	150.0	154.5	170.5	141.3	250.0	213.9	132.3	156.9	107.7	156.1	December "
ጥር 2001	185.4	217.0	163.9	204.8	168.4	170.2	167.8	159.7	250.0	225.1	158.0	156.7	102.5	149.7	January 2009

ሠንጠረዥ 13b:- ጠቅላላ የምግብ ክፍሎች የ ሽንጃች ዋጋ መጠኛ ኢንዱስትሪ ለትግራይ ክልል መገንጠያ ታህሳስ 1999 = 100

Table 13b: Consumer Price Index of Total Food and Its Components for the Tigray Regional State
December 2006 = 100

ወርና ዓመት	ጠቅላላ ምግብ	አህል	በቤት ውስጥ የተወለዱ የምግብ ዓይነቶች			FOOD TAKEN AT HOME					የጠቅላላ ቤናና ዝይ ቅጠል	ሌሎች ምግቦች	የግብአት አገልግሎት	ከቤት ውጪ የተወለዱ ምግቦች	Month and Year	
			ጥራጥራ	ዳቦና ሌሎች የተዘጋጁ ምግቦች	ሥጋ	ወተት+ ዓይብና እንቁላል	ዘይትና ቅባቶች	አትክልትና ፍራፍራ	ቅመግ ቅመም	ደንችና ሌሎች ሥራሥርቶች						ቆይታ ቤናና ዝይ ቅጠል
ታህሳስ 1999	100.0	100.0	100.0	100.0	100.0	100.0	100.0	100.0	100.0	100.0	100.0	100.0	100.0	100.0	100.0	December 2006
ሐምሌ 1999 - ሰኔ 2000	143.4	138.5	129.3	126.5	122.8	114.8	166.5	122.5	345.0	149.0	127.1	104.2	113.7	124.7	124.7	July 2007 - June 2008
2001																2007/2008
መስከረም 2000	131.5	114.3	121.2	111.3	122.6	110.3	146.0	139.8	404.5	113.7	114.1	96.2	113.5	119.1	119.1	September "
ጥቅምት 2000	134.0	116.6	124.8	118.0	119.5	110.0	148.6	149.3	410.9	123.8	122.7	96.0	110.7	120.1	120.1	October "
ኅዳር 2000	129.8	115.6	125.8	119.0	120.0	109.9	146.4	140.7	338.3	126.6	122.8	95.1	110.9	121.5	121.5	November "
ታህሳስ 2000	130.8	117.8	126.5	119.8	120.6	110.8	149.5	139.3	322.9	124.2	126.7	97.4	111.8	123.7	123.7	December "
ጥር 2000	132.3	119.7	128.2	120.4	123.3	111.8	162.8	130.6	318.8	130.4	129.7	99.5	107.6	124.7	124.7	January 2008
የካቲት 2000	139.5	132.4	129.7	127.7	119.1	114.7	184.8	105.9	321.9	168.3	132.1	108.3	109.2	128.2	128.2	February "
መገቢት 2000	155.2	158.3	133.1	133.5	120.3	116.5	194.9	102.4	342.4	183.7	135.9	111.6	119.1	129.2	129.2	March "
ጊያዝያ 2000	156.5	160.2	132.5	130.1	123.9	118.1	197.0	102.6	341.6	186.8	138.4	108.6	119.7	130.2	130.2	April "
ግንቦት 2000	166.7	173.5	139.8	139.3	131.4	125.7	204.1	106.1	355.4	212.8	144.3	116.0	121.0	135.2	135.2	May "
ሰኔ 2000	207.2	240.0	162.2	179.8	137.3	135.0	207.0	104.7	394.0	210.1	150.1	125.8	120.0	149.2	149.2	June "
2001																2008/2009
ሐምሌ 2000	230.2	279.5	169.2	192.0	137.1	146.5	200.2	116.8	422.1	195.2	150.4	130.7	120.7	151.3	151.3	July 2008
ኦገስት 2000	237.7	284.9	179.7	206.0	138.6	150.1	200.0	151.1	447.1	216.3	153.9	149.2	122.8	153.5	153.5	August "
መስከረም 2001	244.3	293.5	193.7	198.8	148.1	154.7	202.9	180.7	422.5	211.9	146.7	147.1	124.6	161.7	161.7	September "
ጥቅምት 2001	241.1	289.5	202.2	201.6	141.4	161.2	195.2	169.4	410.8	197.4	140.9	140.4	123.9	165.1	165.1	October "
ኅዳር 2001	223.4	268.0	190.8	207.8	137.5	162.7	182.6	142.7	336.1	220.3	141.8	141.2	133.0	155.8	155.8	November "
ታህሳስ 2001	206.8	241.9	174.6	192.8	136.9	160.8	185.5	135.4	300.4	212.3	142.8	145.3	133.0	158.2	158.2	December "
ጥር 2001	200.8	235.7	165.5	191.5	140.3	157.8	179.8	138.6	254.4	203.1	139.9	159.2	125.2	158.8	158.8	January 2009

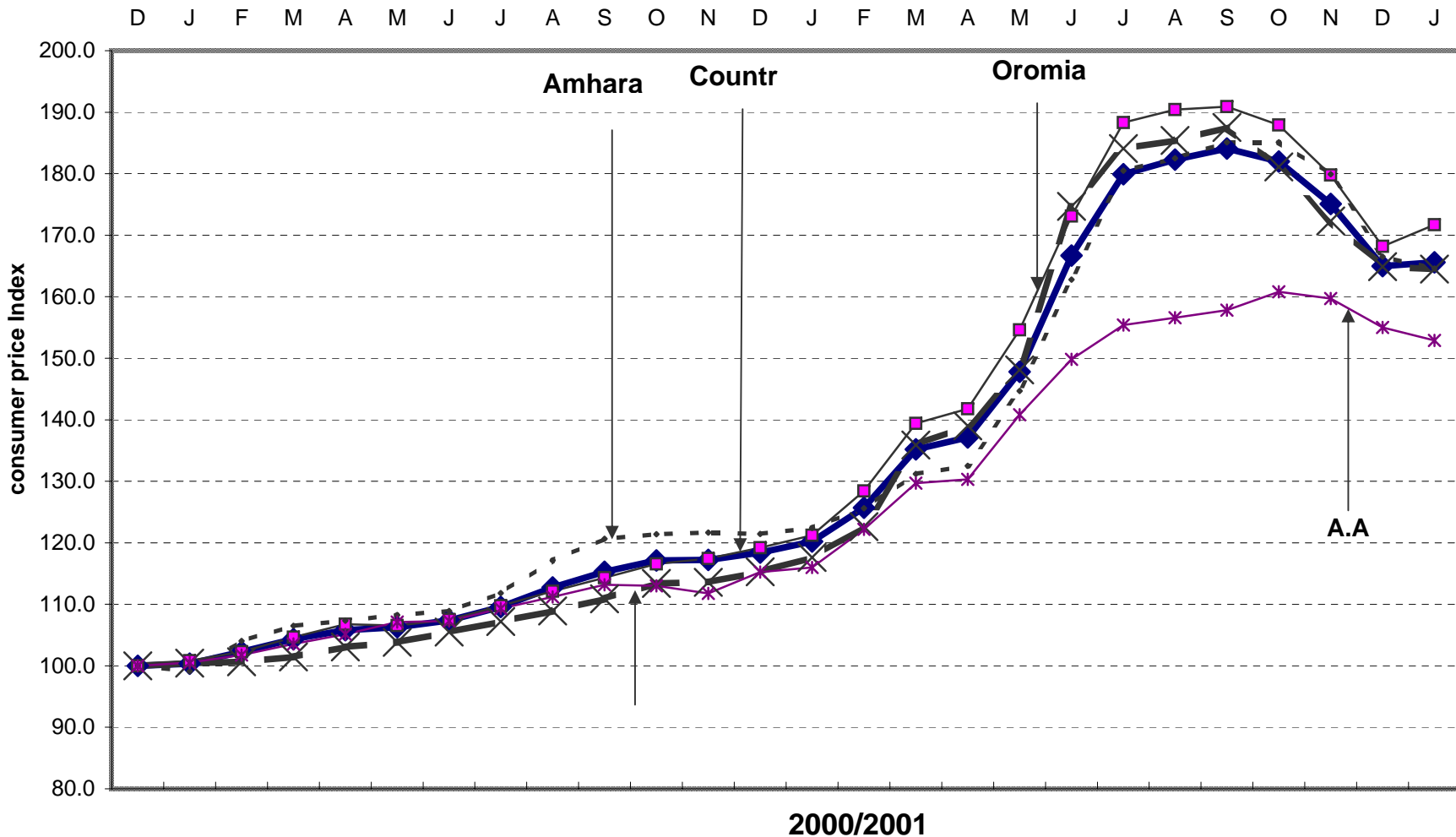
Food CPI for Country Level and Major Regions
የምግብ የሽያጭ ዋጋ ኢንዱክስ ለአገር አቀፍና ለዋና ዋና ክልሎች
2008/2009



የሽያጭ ዋጋ መመዘኛ ኢንዱክስ

General CPI for Country Level and Major Regions

ጠቅላላ የሽያጭ ሰንጠረዥ ለአገር አቀፍና ለዋና ዋና ክልሎች
2008/2009



የሽያጭ ሰንጠረዥ ለአገር አቀፍ