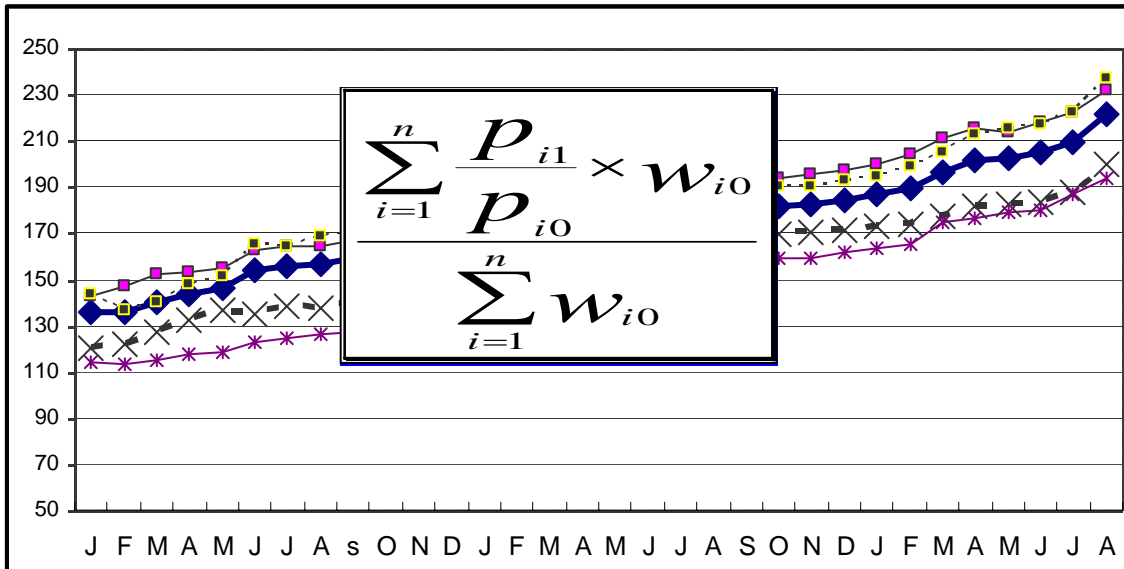


በኢትዮጵያ ፌዴራላዊ ዲሞክራሲያዊ ሪፐብሊክ
 የማዕከላዊ ስታቲስቲክስ ኤጀንሲ

THE FEDERAL DEMOCRATIC REPUBLIC OF ETHIOPIA
 CENTRAL STATISTICAL AGENCY

የአገር አቀፍና የክልሎች የሽማግሌት ዋጋ መመዘኛ ኢንዱክሶች
 የግንቦት ወር 2001 ዓ.ም.
 [ታህሳስ 1999 = 100]
 መረጃ ቁጥር 20

COUNTRY AND REGIONAL LEVEL CONSUMER PRICE INDICES



[December 2006 = 100]

For the month of May 2009

Information No. 20

አዲስ አበባ

ግንቦት 28 ቀን 2001 ዓ.ም.

ADDIS ABABA

05 June 2009

Tel: 251-11-1 553011

Fax: 251-11-1550334.

Email: csa@ethionet.et

CONTENTS

	Page
Introduction.....	4
Inflation Rate.....	8
Comparison of CPI Movements, Current Vs Last Year's Similar Months, at country Level.....	10
Comparison of CPI Movements, Current Vs Last Year's Similar Months, at country and Regional Levels.....	11

List of Tables

Table a: Number of Markets Covered and Basket of Commodities by Region.....	2
Table 1a: General Consumer Price Index and Its Components at Country Level.....	13
Table 1b: Consumer Price Index of Total Food and Its Components at Country Level.....	14
Table 1c: Consumer Price Index of House Rent, Construction Materials, Water, Fuel and Power and Its Components at Country Level.....	15
Table 2a: Summary of General Consumer Price Indices at Country and Regional Levels.....	16
Table 2b: Summary of Consumer Price Indices of Food at Country and Regional Levels.....	18
Table 3a: General Consumer Price Index and Its Components for the City of Addis Ababa Administration.....	20
Table 3b: Consumer Price Index of Total Food and Its Components for the City of Addis Ababa Administration.....	21
Table 4a: General Consumer Price Index and Its Components for the Afar Regional State.....	22
Table 4b: Consumer Price Index of Total Food and Its Components for the Afar Regional State.....	23
Table 5a: General Consumer Price Index and Its	

Components for the Amhara Regional State.....	24
Table 5b: Consumer Price Index of Total Food and Its	
Components for the Amhara Regional State.....	25
Table 6a: General Consumer Price Index and Its	
Components for the Benishangul-Gumuz Regional State.....	26
Table 6b: Consumer Price Index of Total Food and Its	
Components for the Benishangul-Gumuz Regional State.....	27
Table 7a: General Consumer Price Index and Its	
Components for the Dire Dawa Administrative Council.....	28
Table 7b: Consumer Price Index of Total Food and Its	
Components for the Dire Dawa Administrative Council.....	29
Table 8a: General Consumer Price Index and Its	
Components for the Gambela Peoples Regional State.....	30
Table 8b: Consumer Price Index of Total Food and Its	
Components for the Gambela Peoples Regional State.....	31
Table 9a: General Consumer Price Index and Its	
Components for the Harari Peoples Regional State.....	32
Table 9b: Consumer Price Index of Total Food and Its	
Components for the Harari Peoples Regional State.....	33
Table 10a: General Consumer Price Index and Its	
Components for the Oromia Regional State.....	34
Table 10b: Consumer Price Index of Total Food and Its	
Components for the Oromia Regional State.....	35
Table 11a: General Consumer Price Index and Its	
Components for the SNNP Regional State.....	36
Table 11b: Consumer Price Index of Total Food and Its	
Components for the SNNP Regional State.....	37
Table 12a: General Consumer Price Index and Its	
Components for the Somali Regional State.....	38
Table 12b: Consumer Price Index of Total Food and Its	
Components for the Somali Regional State.....	39
Table 13a: General Consumer Price Index and Its	
Components for the Tigray Regional State.....	40
Table 13b: Consumer Price Index of Total Food and Its	
Components for the Tigray Regional State.....	41

Introduction

The Consumer Price Index (CPI) measures the average change in the price paid by consumers for a fixed market basket of goods and services. It is usually based on household expenditure weights of the goods and services in the basket and their current market prices. The twelve CPI's (i.e., the CPI's of the 11 Regions and the CPI at Country Level) presented in this report are based on the results of the Household Income, Consumption and Expenditure Survey (HICES) conducted by the Central Statistical Agency in 2004/2005 from which expenditure weights are derived for major household goods and services of that period and adjusted using the December 2006 retail prices of the goods and services as a base period.

The December 2006 based CPI updates the previous CPI series (i.e. December 2000 based) and the newly selected baskets are more diversified and the weights are more accurate. It also showed various improvements and incorporates non-food index as an independent group. The new series is constructed for country as a whole and Regional States including Dire Dawa and the Addis Ababa City Administration. However, similar indices had been utilized at Addis Ababa Level since 1963 and at Country, Urban and Rural Levels since 1995/96 and in Country and Regional level since 2000.

All the twelve general indices are divided into two major groups that is food and non-food index. The non-food index has ten major groups each, namely: Beverages; Cigarettes and Tobacco; Clothing and Footwear; House Rent, Construction Materials, Water, and Fuel and Power; Furniture, Furnishing, Household Equipment and Operation; Medical Care and Health; Transport and Communication; Recreation, Entertainment and Education; Personal Care and Effects; and Miscellaneous Goods and Services. On the other hand, the Food Index has 13 sub-groups. These are: Cereals; Pulses; Bread and Other Prepared Food; Meat; Milk, Cheese and Eggs; Vegetables and

Fruits; Oil and Fats Spices; Potatoes, Other Tubers and Stems; Coffee Beans (whole) and Tea Leaves; Other Food Items; Milling Charges; and Food taken Away from Home. Furthermore, the new CPI based on December 2006 includes more detailed #Housing, Construction materials, Water and Fuel and Power; components.

For the construction of the current consumer price indices, up to date data on retail prices are collected in the purposely selected sample market places located in representative urban centers in each zone/special weredas of the country. Hence, a total of 119 market places were selected for the retail price survey. In each market place an enumerator is assigned to undertaking the data collection activities. The price data is collected from the 1st day through 15th days of European Calendar month under consideration. To calculate the monthly regional consumer price indices, geometric means of prices of the specific regions are used. The distribution of the market place of each region and items included in the basket of commodities are given on Table A on page 2.

An important factor in constructing a Consumer Price Index is to select the representative basket of goods and services. Including all consumption items into the market basket of goods and services is both cumbersome and unnecessarily costly in term of data collection and processing. Furthermore, it doesn't make sense to include an insignificant weight into an index basket which could not move the price relative up or downwards compared to the general market trend. As a result, basket of goods and services included in the regional baskets are determined by expenditure cut-off point. The total numbers of items included in the regional basket in the December 2006 based indices are given in Table A on page 2.

Country level CPI aggregates the regional group indices and the contributions of the five relatively big regions in terms of the magnitude of the expenditure account for more than 95 percent. These regions are Oromiya, Amhara, SNNP, Addis Ababa and Tigray. On the other hand, the contributions of the remaining regions to the

Country Level Consumer Price Index is about five percent.

According to the weights for food and non-food groups in Table B below, the December 2006 based CPI is about 57 percent of household expenditure spent on the food component, which declined by 3 percentage points as compared to the December 2000 based CPI. On the other hand, the expenditure on non-food components increased from 40 percent to 43 percent. This indicates that the economic situation in the country is going in the right direction as postulated by economic theory. Similarly, in this period larger regions resulted in a substantial decrease in the average weights for food, despite the increased food taken out of home. It was offset mainly by an increase in housing, construction materials, water and fuel and power, furnishing and transport and communication.

Table B: Major groups in the 2000 and 2006 based CPI and their weights at Country Level

No.	Major Group	Weights	
		2000 based CPI	2006 based CPI
1	Food	0.6008	0.5701
2	Non-Food	0.3992	0.4299
3	Beverages	0.0201	0.0202
4	Cigarettes and Tobacco	0.0051	0.0048
5	Clothing and Footwear	0.0926	0.0832
6	House Rent, Construction Materials, Water and Fuel and Power	0.1544	0.2056
7	Furniture, Furnishing, Household Equipment and Operation	0.0494	0.0375
8	Medical Care and Health	0.0120	0.0111
9	Transport and Communication	0.0199	0.0249
10	Recreation, Entertainment and Education	0.0101	0.0109
11	Personal Care and Effects	0.0092	0.0083
12	Miscellaneous Goods	0.0264	0.0234
	Total	1.000	1.000

መግቢያ..... 1
 የወሩ ዋጋ ግሽበት ሁኔታ 7

የዘንድሮውና የአምናው ተመሳሳይ ወሮች የሽማግሌት ዋጋ መመዘኛ ጠቋሚ አሀዝ ንፅፅር በአገር አቀፍ ደረጃ 10

የዘንድሮውና የአምናው ተመሳሳይ ወሮች የሽማግሌት ዋጋ መመዘኛ ጠቋሚ አሀዝ ንፅፅር በአገር አቀፍና በክልሎች ደረጃ..... 11

የሠንጠረዦች ዝርዝር

ሠንጠረዥ ሀ: በጥናቱ የተሸፈኑ ገበያዎችና በኢንዱስትሪ ማዕቀፍ የተካተቱ ዕቃዎችና በዕቃዎች/አገልግሎቶች ብዛት በክልል..... 2

ሠንጠረዥ 1ሀ: ጠቅላላ የሽማግሌት ዋጋ መመዘኛ ኤንዱስትሪና በስሩ የተካተቱ ክፍሎች በአገር አቀፍ ደረጃ..... 13

ሠንጠረዥ 1ለ: ጠቅላላ ምግብና የምግብ ክፍሎች የሽማግሌት ዋጋ መመዘኛ ኤንዱስትሪ በአገር አቀፍ ደረጃ..... 14

ሠንጠረዥ 1ሐ: አገር አቀፍ የቤት ኪራይ፣ የቤት መስሪያ ዕቃዎች፣ ውሃና ኬነርጂ የሽማግሌት ዋጋ መመዘኛ ኤንዱስትሪ 15

ሠንጠረዥ 2ሀ: ጠቅላላ የሽማግሌት ዋጋ መመዘኛ ኤንዱስትሪ በአገር አቀፍና በክልሎች ደረጃ 16

ሠንጠረዥ 2ለ: የምግብ ዋጋ መመዘኛ ኤንዱስትሪ ማጠቃለያ በአገር አቀፍ እና በክልሎች ደረጃ 18

ሠንጠረዥ 3ሀ: ጠቅላላ የሽማግሌት ዋጋ መመዘኛ ኤንዱስትሪና በስሩ የተካተቱ ክፍሎች ለአዲስ አበባ ከተማ መስተዳድር 20

ሠንጠረዥ 3ለ: ጠቅላላ ምግብና የምግብ ክፍሎች የሽማግሌት ዋጋ መመዘኛ ኤንዱስትሪ ለአዲስ አበባ ከተማ መስተዳድር 21

ሠንጠረዥ 4ሀ: ጠቅላላ የሽማግሌት ዋጋ መመዘኛ ኤንዱስትሪና በስሩ የተካተቱ ክፍሎች ለአፋር ክልላዊ መንግስት..... 22

ሠንጠረዥ 4ለ: ጠቅላላ ምግብና የምግብ ክፍሎች የሽማግሌት ዋጋ መመዘኛ ኤንዱስትሪ ለአፋር ክልላዊ መንግስት..... 23

ሠንጠረዥ 5ሀ: ጠቅላላ የሽማግሌት ዋጋ መመዘኛ ኤንዱስትሪና በስሩ የተካተቱ ክፍሎች ለአማራ ክልላዊ መንግስት..... 24

ሠንጠረዥ 5ለ: ጠቅላላ ምግብና የምግብ ክፍሎች የሽማግሌት ዋጋ መመዘኛ ኤንዱስትሪ ለአማራ ክልላዊ መንግስት..... 25

ሠንጠረዥ 6ሀ: ጠቅላላ የሽማግሌት ዋጋ መመዘኛ ኤንዱስትሪና በስሩ የተካተቱ ክፍሎች ለቤንሻንጉል-ጉሙዝ ክልላዊ መንግስት..... 26

ሠንጠረዥ 6ለ: ጠቅላላ ምግብና የምግብ ክፍሎች የሽማግሌት ዋጋ መመዘኛ ለቤንሻንጉል-ጉሙዝ ክልላዊ መንግስት..... 27

<p>ሠንጠረዥ 7ሀ: ጠቅላላ የሸማቾች ዋጋ መመዘኛ ኤንደክስና በስሩ የተካተቱ ክፍሎች ለድሬደዋ አስተዳደር ካውንስል</p>	28
<p>ሠንጠረዥ 7ለ: ጠቅላላ ምግብና የምግብ ክፍሎች የሸማቾች ዋጋ መመዘኛ ለድሬደዋ አስተዳደር ካውንስል</p>	29
<p>ሠንጠረዥ 8ሀ: ጠቅላላ የሸማቾች ዋጋ መመዘኛ ኤንደክስና በስሩ የተካተቱ ክፍሎች ለጋምቤላ ህዝቦች ክልላዊ መንግስት</p>	30
<p>ሠንጠረዥ 8ለ: ጠቅላላ ምግብና የምግብ ክፍሎች የሸማቾች ዋጋ መመዘኛ ለጋምቤላ ህዝቦች ክልላዊ መንግስት</p>	31
<p>ሠንጠረዥ 9ሀ: ጠቅላላ የሸማቾች ዋጋ መመዘኛ ኤንደክስና በስሩ የተካተቱ ክፍሎች ለለሐረሪ ህዝብ ክልላዊ መንግስት</p>	32
<p>ሠንጠረዥ 9ለ: ጠቅላላ ምግብና የምግብ ክፍሎች የሸማቾች ዋጋ መመዘኛ ኤንደክስ ለለሐረሪ ህዝብ ክልላዊ መንግስት</p>	33
<p>ሠንጠረዥ 10ሀ: ጠቅላላ የሸማቾች ዋጋ መመዘኛ ኤንደክስና በስሩ የተካተቱ ክፍሎች ለአሮሚያ ክልላዊ መንግስት</p>	34
<p>ሠንጠረዥ 10ለ: ጠቅላላ ምግብና የምግብ ክፍሎች የሸማቾች ዋጋ መመዘኛ ኤንደክስ ለአሮሚያ ክልላዊ መንግስት</p>	35
<p>ሠንጠረዥ 11ሀ: ጠቅላላ የሸማቾች ዋጋ መመዘኛ ኤንደክስና በስሩ የተካተቱ ክፍሎች ለደ.ኢ.ብ.ብ.ሀ ክልላዊ መንግስት</p>	36
<p>ሠንጠረዥ 11ለ: ጠቅላላ ምግብና የምግብ ክፍሎች የሸማቾች ዋጋ መመዘኛ ኤንደክስ ለደ.ኢ.ብ.ብ.ሀ ክልላዊ መንግስት</p>	37
<p>ሠንጠረዥ 12ሀ: ጠቅላላ የሸማቾች ዋጋ መመዘኛ ኤንደክስና በስሩ የተካተቱ ክፍሎች ለሶማሌ ክልላዊ መንግስት</p>	38
<p>ሠንጠረዥ 12ለ: ጠቅላላ ምግብና የምግብ ክፍሎች የሸማቾች ዋጋ መመዘኛ ኤንደክስ ለሶማሌ ክልላዊ መንግስት</p>	39
<p>ሠንጠረዥ 13ሀ: ጠቅላላ የሸማቾች ዋጋ መመዘኛ ኤንደክስና በስሩ የተካተቱ ክፍሎች ለትግራይ ክልላዊ መንግስት</p>	38
<p>ሠንጠረዥ 13ለ: ጠቅላላ ምግብና የምግብ ክፍሎች የሸማቾች ዋጋ መመዘኛ</p>	41

መግቢያ

የሽማፍራዎች ዋጋ መመዘኛ ኢንዱክሽን ማለት ሽማፍራዎች ለተወሰኑ ዕቃዎችና አገልግሎቶች የከፈሉትን አማካይ የዋጋ ለውጥ ለመለካት የሚያገለግል ጠቋሚ አህዝ ነው። የዋጋ መመዘኛ ኢንዱክሽን አብዛኛውን ጊዜ መሠረት የሚያደርገው የቤተሰብ ገቢ፣ ፍጆታና ወጪ ጥናት ወጤት በሆነው ቤተሰቦች በዕቃዎችና ግልጋሎቶች ለይ ባወጡት የመቶኛ ድርሻ መጠንና የወቅቱ የገበያ ዋጋ ላይ ነው። በዚህ ሪፖርት ውስጥ የተካተቱት 12 ኢንዱክሶች (የ11 ክልሎችና የአገር አቀፍ) መሠረት ያደረጉት የማዕከላዊ ስታቲስቲክስ ኤጀንሲ በ1996/97 በጀት ዓመት በመላ አገሪቱ በናሙና በተመረጡ ቦታዎች ያካሄደውን የቤተሰብ ገቢ፣ ፍጆታና ወጪ ጥናት ወጤት ነው።

ይህ ታህሳስ ወር 1999 ዓ.ምን መሠረት ያደረገው (ታህሳስ 1999=100) የሽማፍራዎች ዋጋ መመዘኛ ኢንዱክሽን በክልል ደረጃ ሲዘጋጅ በዓይነቱ ለሁለተኛ ጊዜ የተዘጋጀ ሲሆን በታህሣሥ 1993 ዓ.ም. መሠረት ያደረገውን የሽማፍራዎች መመዘኛ ኢንዱክሽን የሚተካ ነው። በአገር አቀፍ ደረጃ ከ1988 ጀምሮና በአዲስ አበባ ከተማ ደረጃ ደግሞ ከ1955 ዓ.ም ጀምሮ በየወሩ ተመሳሳይ ኢንዱክሶች እየተዘጋጁ ለተጠቃሚዎች ሲሰራጩ መቆየታቸው ይታወቃል። እነዚህ 12 የዋጋ መመዘኛ ኢንዱክሶች በአገሪቱ የሚገኙ 11 ክልሎችና የአገር አቀፍን ሪፖርት ጨምሮ የሚሸፍነው የዕቃዎችና የአገልግሎቶችን ክምችት በያዙ ሁለት ዋና ክፍሎች የተከፈሉ ናቸው። እነሱም፡- የምግብና ምግብ ነክ ያልሆኑ መመዘኛ ኢንዱክሶች ሲሆን ምግብ ነክ ያልሆኑ መመዘኛ ኢንዱክሽን እንደገና በ10 ንዑስ ክፍሎች ይከፈላል። እነዚህም መጠጥ፣ ሲጃራና ትምባሆ፣ ልብስና መጫሚያ፣ የቤት ኪራይ፣ የቤት መሥሪያ ዕቃዎች፣ ወሃና ኢነርጂ፣ የቤት ዕቃዎች፣ የቤት ማስገጫዎች፣ የቤት ቁሳቁስና የቤት ሠራተኛ ደመወዝ፣ ሕክምና፣ መንገዥና መገናኛ፣ መዝናኛና ትምህርት፣ የግል ንጽህናና የግል ቋሚ ዕቃዎች እንዲሁም ሌሎች ዕቃዎችና አገልግሎቶች ሲሆኑ የሁሉም ክፍሎች አጠቃላይ ወጤት የሚሆነው ደግሞ የጠቅላላ ዋጋዎች መመዘኛ ኢንዱክሽን ነው።

በሁሉም ክልሎች የጠቅላላ ዋጋ መመዘኛ ኢንዱክሶች ስሌት አብዛኛውን የመቶኛ ወጪ ድርሻ የሚይዘው የምግብ መመዘኛ ኢንዱክሽን ሲሆን በሁሉም የምግብ ዋጋ መመዘኛ ኢንዱክሶች ዋና ዋና ክፍሎች እህል፣ ጥራጥሬ፣ ዳቦና ሌሎች የተዘጋጁ ምግቦች፣ ሥጋ፣ ወተት፣ ዐይብና ዕንቁላል፣ ዘይትና ቅባቶች፣ አትክልትና ፍራፍሬ፣ ቅመማ ቅመም፣ ድንችና ሌሎች ሥራሥሮች፣ ያልተቆላ ቡናና ሻይ ቅጠል፣ ሌሎች ምግቦች፣ የማስፈጫ አገልግሎትና ከቤት ወጪ የተወሰዱ ምግቦች ናቸው።

ለዋጋ ኢንዱክሶቹ የተመረጡት ዕቃዎችና አገልግሎቶች የዋጋ መረጃ የሚሰበሰበው በየዞን/ በየልዩ ወረዳ በናሙና በተመረጡ ወካይ ከተሞች ውስጥ ባሉ የገበያ ቦታዎች ነው። በመሆኑም ከእያንዳንዱ ዞን ሁለት ከተሞች (የገበያ ቦታዎች) የተመረጡ ሲሆን እንደዚሁም በእያንዳንዱ ልዩ ወረዳ አንድ ከተማ (የገበያ ቦታ) በጥናቱ እንዲካተት ተደርጓል።

በእነዚህ ከተሞች ውስጥ ተመድበው ለሚሰሩ መረጃ ሰብሳቢዎች በየበጀት ዓመቱ መጨረሻ በመረጃ አሰባሰብ ዘዴው ላይ ስልጠና የሚሰጥ ሲሆን ለአሰባሰቡ የሚረዱ የመስክ መገልገያ መሣሪያዎች (ሚዛን፣ ሜተር ... ወዘተ) ይሰጣቸዋል። እነዚህ መሣሪያዎችን በመጠቀም በየወሩ የዋጋ መረጃዎችን ከነጋዴዎች ይሰበስባሉ። አንዳንድ ጊዜም አንድ በላተኛ ወይም ገዢ ከነጋዴ ሲገዛ ቢገኝና ለሥራው ተባባሪነቱን ካሳየ መረጃው ከርሱም ይሰበስባል። የችርቻሮ ዋጋ መረጃ የሚሰበሰበው እንደ አውሮፓውያን ዘመን አቆጣጠር ወሩ በገባ ከ1ኛው ቀን አንስቶ አስከ 15ኛው ቀን ነው። የክልል ኢንዱስትሪ ለማስላት ለኢንዱስትሪ ለተመረጡት ዕቃዎችና አገልግሎቶች አማካይ የችርቻሮ ዋጋቸውን የጂኦሜትሪክ ሚን ዘዴ ጥቅም ላይ ውሎአል። የኢንዱስትሪ ሪፖርቱም በየወሩ ለተጠቃሚዎች በዚህ መልክ ይቀርባል።

የአገር አቀፍ የችርቻሮ ዋጋ መመዘኛ ኢንዱስትሪ የሚሰላው እያንዳንዱ ክልል ለአገር አቀፍ የቤተሰብ ወጪ ያለውን የመቶኛ ድርሻ መሠረት በማድረግ ነው። በመሆኑም ለአገር አቀፍ ኢንዱስትሪ ስሌት ከ95 በመቶ በላይ አስተዋጽኦ የሚያደርጉ ክልሎች በቅደም ተከተል ኦሮሚያ፣ አማራ፣ የደቡብ ብሔር ብሔረሰቦችና ሕዝቦች፣ አዲስ አበባና ትግራይ ሲሆኑ የተቀሩት ክልሎች በየወሩ ለሚታየው አገር አቀፍ የችርቻሮ ዋጋ መመዘኛ ኢንዱስትሪ ስሌት የሚኖራቸው አስተዋጽኦ ከአምስት በመቶ የማይበልጥ ነው።

ለችርቻሮ ዋጋ ጥናት በአጠቃላይ 119 የገበያ ቦታዎች የተመረጡ ሲሆን በእያንዳንዱ ክልል የተመረጡ የናሙና ገበያዎች ብዛትና በየኢንዱስትሪዎቻቸው ማዕቀፍ የተካተቱ ዕቃዎች/አገልግሎቶች ብዛት ከዚህ በታች ቀርቦአል።

ሠንጠረዥ ሀ: በጥናቱ የተሸፈኑ ገበያዎችና በኢንዱስትሪ ማዕቀፍ የተካተቱ ዕቃዎች/አገልግሎቶች ብዛት በክልል

Table A: Number of Markets Covered and Basket of Commodities by Region

ተራ ቁጥር	ክልል	የገበያ ቦታዎች ብዛት	በኢንዱስትሪ የተካተቱ ዕቃዎች/አገልግሎቶች ብዛት		Region
			ታህሳስ 1993=100	ታህሳስ 1999=100	
1	ትግራይ	8	114	143	Tigray
2	አፋር	4	85	153	Afar
3	አማራ	20	118	144	Amhara
4	ኦሮሚያ	24	127	161	Oromia
5	ሶማሌ	6	85	122	Somalie
6	ቤኒሻንጉል	6	111	142	Benishangul-Gumuz
7	ጊ.ብ.ብ.ሀ	31	130	152	SNNP
8	ጋምቤላ	3	105	103	Gambela
9	ሐረሪ	2	102	158	Harari
10	አዲስ አበባ ከተማ	12	175	193	Addis Ababa City Administration
11	ድራዳዋ አስተዳደር ድምር	3	121	150	Dire Dawa Administrative
		119			Total
Sr.No.		Number of Markets	Basket of Commodities		

ለጠቋሚ አሀዙ ክንዋኔ ዋናው ነገር በጠቋሚ አሀዙ ማዕቀፍ ተካትተው በዋናነት የሚያገለግሉ ዕቃዎችና አገልግሎቶች የመምረጥ ጉዳይ ነው። ጠቋሚ አሀዞች የሚመሠረቱት በአጠቃላይ በናሙና በሚመረጡ ዕቃዎች ላይ ሲሆን በጠቋሚ አሀዙ ማዕቀፍ ውስጥ መካተት የሚገባው ዕቃ መወሰን ግን ሁሌም ቀላል የሚባል ተግባር አይደለም። የተለያየ የአመራረጥ ዘዴ መጠቀም ቢቻልም የሚመረጡት ዕቃዎች ለረጅም ጊዜ የሚኖራቸው ተፈላጊነት፣ በአስተማማኝ ሁኔታ በገበያ ላይ የመገኘታቸው ጉዳይ፣ ሌሎችን ዕቃዎች የመወከል ብቃትና ከሌሎች ምርቶች ጋር ያላቸው ተወዳዳሪነት መሠረት ያደረገ እንዲሆን ይፈለጋል። በአጠቃላይ የተመረጡት ዕቃዎች በበቂ መጠን የመገኘታቸው ሁኔታ፣ በየወቅቱ ተወዳዳሪነታቸውና ዕቃዎችና አገልግሎቶች ምድቡን የመወከላቸው ብቃትን ማረጋገጥ ያስፈልጋል።

ታህሳስ 1999 ዓ.ም. መሠረት ያደረገው የሸማቾች ዋጋ መመዘኛ ኢንዱክስ አይነቶችና እያንዳንዱ ዋና ክፍል ያለው የወጪ ድርሻ በገፅ 6 ላይ ይታያል። ይህ ሠንጠረዥ እንደሚያሳየው የምግብ የመቶኛ የወጪ ድርሻ ታህሳስ 1993 ዓ.ም. ከነበረው 60 በመቶ ወደ 57 በመቶ ቀንሷል። በአንፃሩ ደግሞ ምግብ ነክ ያልሆነ መመዘኛ ኢንዱክስ ታህሳስ 1993 ዓ.ም. ከነበረው 40 በመቶ የወጪ ድርሻ ወደ 43 በመቶ ከፍ ብሏል። ባጠቃላይ ሲታይ በሁሉም ክልሎች ኢንዱክስ ላይ የምግብ የወጪ ድርሻ የማይናቅ ቅናሽ ያሳየ ሲሆን ምግብ ነክ ያልሆኑ የወጪ ድርሻ መጠነኛ እድገት አሳይቷል።

የግንቦት ወር 2001 ዓ.ም. የዋጋ ግሽበት ሁኔታ

ከሠንጠረዥ #ሐ; መረዳት እንደሚቻለው በግንቦት ወር 2001 ዓ.ም. የተመዘገበው አገራዊ አጠቃላይ የዋጋ ግሽበት 41.6 በመቶ ሲሆን ይህ አህዝብ በግንቦት 2000 ከታየው 21.8 በመቶ አጠቃላይ የዋጋ ግሽበት ጋር ሲነፃፀር በ19.8 ጭማሪ አሳይቷል። በተመሳሳይ ሁኔታ በግንቦት ወር 2001 ዓ.ም. የተመዘገበው አገራዊ የምግብ የዋጋ ግሽበት 52.6 በመቶ ሲሆን አገራዊ ምግብ ነክ ያልሆኑ የዋጋ ግሽበት ደግሞ 24.6 በመቶ ሆኗል። በግንቦት ወር 2001 ዓ.ም. የተመዘገበው 52.6 በመቶ የምግብ የዋጋ ግሽበት ከግንቦት 2000 ዓ.ም. ከታየው 29.7 ጋር ሲነፃፀር በ22.9 ጭማሪ አሳይቷል። ለዚህም አገራዊ የምግብ የዋጋ ግሽበት መጨመር ምክንያት የሆኑት የተለያዩ የምግብ ክፍሎች ማለትም በእህል፣ በጥራጥራ፣ በሥጋ፣ በአይብና ዕንቁላል፣ በአትክልትና ፍራፍሬ፣ በድንችና ሌሎች ሥራሥሮች፣ በሌሎች ምግቦች እና ከቤት ዉጪ በተወሰዱ ምግቦች የዋጋ ኢንዱክሶች ላይ ጭማሪ በመከሰቱ ነው።

የ12 ወራት የምግብና የአጠቃላይ ተንቀሳቃሽ አማካይ የዋጋ ግሽበት ከመጋቢት ወር 2001 ዓ.ም. ጀምሮ በተከታታይ ቅናሽ በማሳየት ላይ ይገኛል። ይኸውም በየካቲት ወር 2001 ዓ.ም. አጠቃላይ ተንቀሳቃሽ የዋጋ ግሽበት 46.1 የነበረ ሲሆን በመጋቢት ወር 2001 ዓ.ም. 45.2፣ በሚያዝያ ወር 2001 ዓ.ም. በ44.3 እና በግንቦት ወር 2001 ዓ.ም. በ41.6 በመቶ ዝቅ ብሎአል። በተመሳሳይ ሁኔታ የምግብ ተንቀሳቃሽ አማካይ የዋጋ ግሽበትም በየካቲት ወር 2001 ዓ.ም. ከነበረበት 61.1 በመቶ በመጋቢት ወር 2001 ዓ.ም. ወደ 59.2 በመቶ፣ በሚያዝያ ወር 2001 ዓ.ም. በ57.2 በመቶ እና በግንቦት ወር 2001 ዓ.ም. በ52.6 በመቶ ዝቅ ማለቱ ተረጋግጦአል። ሆኖም ምግብ ነክ ያልሆኑ የኢንዱስትሪ ክፍሎች ካለፈው ወር ጋር ሲነጻጸር ምንም ለውጥ አላሳየም። ከምግብ ክፍሎች የስንዴ፣ የሩዝ፣ የአትክልትና ፍራፍሬ እና የሰኳር ዋጋ ጭማሪ በማስመዘገብ ላይ የሚገኙ ሲሆን በተመሳሳይ ሁኔታ ምግብ ነክ ያልሆኑ የኢንዱስትሪ ክፍሎች ውስጥ የኮንስትራክሽን ዕቃዎች፣ ልብስና መጫሚያ፣ የቤት ዕቃዎችና የቤት ማስገጫዎች እና የግል ንጽህና ዕቃዎች ዋጋ ጨምሮአል። በቅርቡ የታየው የዋጋ ጭማሪ ባለፈው ዓመት ከታየው ጭማሪ ጋር ሲነጻጸር የአሁኑ በጣም መቀነሱን ጠቋሚ አሃዙ ያመለክታል።

ሠንጠረዥ (መ) የሚያሳየው የዋጋ ግሽበት ሁኔታ ካለፈው ዓመት ተመሳሳይ ወር ጋር በማነፃፀር ነው። ከሠንጠረዥ ማየት እንደሚቻለው የግንቦት ወር 2001 ዓ.ም. አጠቃላይ የዋጋ ግሽበት ካለፈው ዓመት ተመሳሳይ ወር ማለትም ከግንቦት ወር 2000 ዓ.ም. ጋር ሲነጻጸር 14.2 ከመቶ ከፍ ያለ ሲሆን በሚያዝያ ወር 2001 ዓ.ም. ከታየው 23.4 ከመቶ ጋር ሲተያይ የ9.2 ቅናሽ አሳይቷል። በተመሳሳይ ሁኔታ የምግብ ዋጋ ግሽበትም በሚያዝያ ወር 2001 ዓ.ም. ከነበረበት 25.4 በመቶ በግንቦት ወር 2001 ዓ.ም. ወደ 11.6 በመቶ ዝቅ በማለቱ የ13.8 ቅናሽ አሳይቶአል። ሆኖም ምግብ ነክ ያልሆኑ ክፍሎች የዋጋ ግሽበት የግንቦት ወር 2001 ዓ.ም. ካለፈው ሚያዝያ ወር 2001 ዓ.ም. ጋር ሲነጻጸር የ1.6 ቅናሽ አሳይቷል።

May 2009 Inflation Rate

As it is indicated in Table 'C' below the country level overall inflation rate (annual change based on 12 months Moving Average) stood at 41.6 percent in May 2009. This rate is 19.8 percentage points higher than the corresponding annual average rate of 21.8 percent at May 2008. Similarly, the country level food inflation rate stood at 52.6 percent and the country level Non-food inflation rate stood at 24.6 percent in May 2009. The 52.6 percent Country level food inflation rate in May 2009 is 22.9 percentage points higher than that of 29.7 percent inflation rate at May 2008. This higher increase in the Food inflation rate was due to the increase in price indices of the Food components like Cereals, Pulses, Meat, Milk and egg, Vegetable and fruits, Potatoes & Other Tubers and Stems, Other food Items and food taken away from home.

The 12 months moving average General and Food inflation showed a decline starting in March 2009 and continued the trend in May 2009. In this regard the General moving average inflation rate was 46.1 in February 2009 and consequently declined to 45.2 percent in March 2009, 44.3 in April 2009 and 41.6 in May 2009. In a similar way the Food moving average inflation rate was declined from 61.1 percent in February 2009 to 59.2 percent in March 2009, 57.2 percent in April 2009 and 52.6 percent in May 2009. However, the Non-food components of the Index showed no change as compared to the one observed last month. From the food components, the prices of Wheat, Rice, Fruits and Vegetables and Sugar are on the rise. Among the non-food components, the prices of construction materials, clothing and footwear, Furniture and furnishing and personal care and effects are increasing. However, as the figures indicate the increase in prices in recent months is much lower than the situation observed last year.

Table (D) shows Inflation rate based on last year's similar month comparison. As can be seen from the table the May 2009 General year-on-year inflation was 14.2 percent and it is less than the one observed in April 2009 which was 23.4 Percent showing a decline by 9.2 percentage points. Similarly, the year-on-year Food inflation declined from 25.4 percent in April 2009 to 11.6 percent in May 2009 which declined by 13.8 percentage points. The Non-Food inflation decreased by 1.6 points in May 2009 as compared to the one observed in April 2009.

ሠንጠረዥ ሐ: በአገር አቀፍ ደረጃ የዋጋ ግሽበት ሁኔታ

Table C: The Country Level General Inflation Rate

በጀት ዓመት (ወር)	የዋጋ ግሽበት ሁኔታ				Budget Year and months
	አጠቃላይ የዋጋ ግሽበት	የምግብ ግሽበት	የዋጋ	የምግብ ያልሆኑ ግሽበት	
የ2000 በጀት ዓመት በወራት					The 2007/8 Budget Year in Months
ዓመታዊ አማካይ (ሐምሌ 1999 - ሰኔ 2000)	18.4	23.6		11.6	Annual Average (July 2007 – June 2008)
ሐምሌ 1999	15.9	17.9		13.2	July 2007
ነሐሴ 1999	16.1	18.6		12.8	August 2007
መስከረም 2000	16.5	19.7		12.3	September 2007
ጥቅምት 2000	16.9	20.6		11.9	October 2007
ኅዳር 2000	17.1	21.3		11.5	November 2007
ታህሳስ 2000	17.2	22.0		11.0	December 2007
ጥር 2000	17.5	22.8		10.5	January 2008
የካቲት 2000	18.0	23.7		10.5	February 2008
መጋቢት 2000	19.0	25.2		10.7	March 2008
ሚያዝያ 2000	19.9	26.6		10.8	April 2008
ግንቦት 2000	21.8	29.7		11.4	May 2008
ሰኔ 2000	25.3	34.9		12.5	June 2008
ሐምሌ 2000	29.6	41.3		13.8	July 2008
ነሐሴ 2000	33.6	46.9		15.4	August 2008
መስከረም 2001	37.2	51.8		17.0	September 2008
ጥቅምት 2001	40.3	55.7		18.8	October 2008
ኅዳር 2001	42.8	58.7		20.4	November 2008
ታህሳስ 2001	44.4	60.0		21.9	December 2008
ጥር 2001	45.6	60.9		23.4	January 2009
የካቲት 2001	46.1	61.1		24.2	February 2009
መጋቢት 2001	45.2	59.2		24.4	March 2009
ሚያዝያ 2001	44.3	57.2		24.6	April 2009
ግንቦት 2001	41.6	52.6		24.6	May 2009
Budget Year	Inflation Rate				
	Overall Inflation rate	Food Inflation rate	Inflation	Non-food Inflation rate	

Revised (From January 2007 – November 2007)

ሠንጠረዥ መ: የዘንድሮውና የአምናው ተመሳሳይ ወሮች የሽማቻች ዋጋ መመዘኛ ኢንዱስትሪ ለውጥ ንፅፅር በአገር አቀፍ ደረጃ ማጠቃለያ

Table D: Summary of Comparison of CPI Movements, Current vs. Last year's Similar Months at Country Level

በጀት ዓመት (ወር)	የዋጋ ግሽበት ሁኔታ ካለፈው ዓመት ተመሳሳይ ወር ጋር ሲነፃፀር			Budget Year and months
	አጠቃላይ የዋጋ ግሽበት	የምግብ የዋጋ ግሽበት	የምግብ ነክ ያልሆኑ የዋጋ ግሽበት	
የ2000 በጀት ዓመት በወራት				The 2007/8 Budget Year in Months
ዓመታዊ አማካይ (ሐምሌ 1999 - ሰኔ 2000)	24.9	34.2	12.3	Annual Average (July 2007 - June 2008)
ታህሳስ 2000	18.4	25.7	8.8	December 2007
ጥር 2000	19.8	28.0	9.0	January 2008
የካቲት 2000	22.9	30.2	13.2	February 2008
መጋቢት 2000	29.6	39.4	16.2	March 2008
ሚያዝያ 2000	29.6	39.1	16.5	April 2008
ግንቦት 2000	39.1	54.1	18.5	May 2008
ሰኔ 2000	55.2	78.3	23.2	June 2008
ሐምሌ 2000	64.2	91.7	24.9	July 2008
ነሐሴ 2000	61.7	85.0	27.1	August 2008
መስከረም 2001	59.6	80.9	27.3	September 2008
ጥቅምት 2001	55.4	72.3	29.5	October 2008
ኅዳር 2001	49.4	63.3	28.2	November 2008
ታህሳስ 2001	39.3	46.7	27.9	December 2008
ጥር 2001	37.8	44.8	27.0	January 2009
የካቲት 2001	32.8	38.9	23.5	February 2009
መጋቢት 2001	23.7	26.5	19.2	March 2009
ሚያዝያ 2001	23.4	25.4	20.3	April 2009
ግንቦት 2001	14.2	11.6	18.7	May 2009
Budget Year	Inflation Rate based on last year's similar month comparison			
	Overall Inflation	Food Inflation rate	Non-food Inflation rate	

	rate			
--	-------------	--	--	--

Revised (From January 2007 – November 2007)

የዘንድሮውና የአምናው ተመሳሳይ ወሮች የችርቻሮ ዋጋ መመዘኛ ጠቋሚ አሀዝ ንዕስር በአገር አቀፍ ደረጃ

Comparison of CPI Movements, Current vs Last year's Similar Months at Country Level

ከሠንጠረዥ 1(ሀ) መረዳት እንደሚቻለው የግንቦት ወር 2001 ዓ.ም የአገር አቀፍ ጠቅላላ የችርቻሮ ዋጋ ኢንዱክስ ከግንቦት ወር 2000 ዓ.ም ጠቅላላ ኢንዱክስ ጋር ሲነፃፀር በ14.2 ከመቶ ዕድገት አሳይቶአል። ለዚህ ዕድገት አስተዋጽኦ ያደረጉት ምግብ በ11.6 ከመቶ፣ መጠጥ በ41.0 ከመቶ፣ ሲጋራና ትምባሆ 33.6 ከመቶ፣ ልብስና መጫሚያ በ28.7 ከመቶ፣ የቤት ኪራይ፣ የቤት መሥሪያ ዕቃዎች፣ ውሃና ኢነርጂ በ14.9 ከመቶ፣ የቤት ዕቃዎች፣ ቤት ማስገጫዎች፣ የቤት ቁሳቁስና የቤት ሠራተኛ ደመወዝ በ19.5 ከመቶ፣ ህክምና 16.1 ከመቶ፣ መዝናኛና ትምህርት በ19.3 ከመቶ፣ የግል ንጽህናና የግል ቋሚ ዕቃዎች በ21.5 ከመቶ እና ሌሎች ዕቃዎች በ9.9 ከመቶ በየኢንዱስትሪው ላይ ጭማሪ በማሳየታቸው ነው። በሌላ በኩል ትራንስፖርትና መገናኛ በ0.7 ከመቶ በኢንዱስትሪ ላይ ቅናሽ አሳይቶአል።

The May 2009 Country Level Consumer Price Index has increased by 14.2 percent as compared to May 2008 (Table 1(a)). This increase was attributed to the rise in the indices of its components; namely: Food by 11.6 percent, Beverages by 41.0 percent, Cigarettes and Tobacco by 33.6 percent, Clothing and Footwear by 28.7 percent, House Rent, Construction Materials, Water and Fuel and Power by 14.9 percent, Furniture, Furnishings, Household Equipment and Operation by 19.5 percent, Medical Care and Health by 16.1 percent, Recreation, Entertainment and Education by 19.3 percent, Personal Care Effects by 21.5 percent and Miscellaneous Goods by 9.9 percent. On the other hand, Transport and Communication index has declined by 0.7 percent.

ሠንጠረዥ 1(ለ) እንደሚያሳየው ለጠቅላላ ምግብ ኢንዱክስ 11.6 ከመቶ መጨመር ምክንያት የሆኑት የምግብ ክፍሎች ማለትም እህል በ13.7 ከመቶ፣ ጥራጥሬ በ22.6 ከመቶ፣ ዳቦና ሌሎች የተዘጋጁ ምግቦች በ41.8 ከመቶ፣ ሥጋ በ14.8 ከመቶ፣ ወተት፣ አይብና ዕንቁላል በ27.4 ከመቶ፣ አትክልትና ፍራፍሬ በ17.3 ከመቶ፣ ድንችና ሌሎች ስራ ስሮች በ29.6 ከመቶ፣ ያልተቆላ ቡናና ሻይ ቅጠል በ7.3 ከመቶ፣ ሌሎች ምግቦች በ56.5 ከመቶ፣ የማስፈጫ አገልግሎት በ11.5 ከመቶ እና ከቤት ወጪ የተወሰዱ ምግቦች በ22.7 ከመቶ ዕድገት በየኢንዱስትሪው ላይ ጭማሪ በማሳየታቸው ነው። በሌላ በኩል በዘይትና ቅባቶች በ9.9 ከመቶ እና ቅመማ ቅመም በ54.9 ከመቶ በኢንዱስትሪው ላይ ቅናሽ አሳይተዋል።

The 11.6 percent increase in the Food index was observed due to rise in the indices of the components of Food index (Table 1(b)) namely: Cereals by (13.7 percent), Pulses (22.6 percent), Bread and Other Prepared Food (41.8 percent), Meat (14.8 percent), Milk, Cheese and Eggs (27.4 percent), Vegetables and fruits (17.3 percent), Potatoes, Other Tubers and Stems (29.6 percent), Coffee and Tea Leaves (7.3 percent), other Food Items (56.5 percent), Milling Charge by (11.5 percent), and Food Taken Away from Home (22.7 percent). On the other hand, declines were observed in the indices of oils and Fats and Spices by (9.9 percent) and (54.9 percent), respectively.

**የዘንድሮውና የአምናው ተመሳሳይ ወሮች
የችርቻሮ ዋጋ መመዘኛ ጠቋሚ አሀዝ ንፅፅር በአገር አቀፍና በክልሎች ደረጃ**
Comparison of CPI Movements, Current vs Last year at Country and
Regional Levels

ከሠንጠረዥ 2(ሀ) መረዳት እንደሚቻለው የግንቦት ወር 2001 ዓ.ም የአገር አቀፍ ጠቅላላ የችርቻሮ ዋጋ መመዘኛ ኢንዱክስ ከግንቦት ወር 2000 ዓ.ም ጠቅላላ ኢንዱክስ ጋር ሲነፃፀር በ14.2 ከመቶ ዕድገት አሳይቶአል። ለዚህ ዕድገት አስተዋጽኦ ያደረጉት አዲስ አበባ 14.7 ከመቶ፣ አፋር 11.4 ከመቶ፣ አማራ 12.9 ከመቶ፣ ቤኔሻንጉል ጉሙዝ 21.4 ከመቶ፣ ድሬዳዋ 18.5 ከመቶ፣ ጋምቤላ 34.9 ከመቶ፣ ሐረሪ 18.2 ከመቶ፣ ኦሮሚያ 13.1 ከመቶ፣ ደቡብ ብሄሮች፣ ብሄረሰቦችና ሕዝቦች 15.6 ከመቶ፣ ሶማሌ 27.2 ከመቶ እና ትግራይ 18.1 ከመቶ በጠቅላላ ኢንዱክሶቻቸው ላይ ጭማሪ በማሳየታቸው ነው።

Table 2(a) also displays that the May 2009 Country level General Consumer Price Index has increased by 14.2 percent as compared to May 2008. This increase was attributed to the rise in the indices of its constituent regions; namely: Addis Ababa 14.7 percent, Afar 11.4 percent, Amhara 12.9 percent, Benishangul Gumuz 21.4 percent, Dire Dawa 18.5 percent, Gambela 34.9 percent, Harari 18.2 percent, Oromia 13.1 percent, SNNP 15.6 percent, Somali 27.2 percent and Tigray 18.1 percent.

ሠንጠረዥ 2(ለ) እንደሚያሳየው አገር አቀፍ ጠቅላላ የምግብ ዋጋ መመዘኛ ኢንዱክስ 11.6 ከመቶ መጨመር ምክንያት የሆኑት አዲስ አበባ 16.8 ከመቶ፣ አፋር 14.5 ከመቶ፣ አማራ 10.0 ከመቶ፣ ቤኔሻንጉል ጉሙዝ በ22.1 ከመቶ፣ ድሬዳዋ 22.6 ከመቶ፣ ጋምቤላ 40.2 ከመቶ፣ ሐረሪ 19.8 ከመቶ፣ ኦሮሚያ 9.3 ከመቶ፣ ደቡብ ብሄሮች፣ ብሄረሰቦችና ሕዝቦች 12.4 ከመቶ፣ ሶማሌ 31.5 ከመቶ እና ትግራይ 14.9 ከመቶ በጠቅላላ ኢንዱክሶቻቸው ላይ ጭማሪ በማሳየታቸው ነው።

Table 2(b) reveals that the 11.6 percent increase in the country level Food index was observed due to a rise in the indices of the regions namely: Addis Ababa 16.8 percent, Afar 14.5 percent, Amhara 10.0 percent, Benishangul Gumuz 22.1 percent, Dire Dawa 22.6 percent, Gambela 40.2 percent, Harari 19.8 percent, Oromia 9.3 percent, SNNP 12.4 percent, Somali 31.5 percent and Tigray 14.9 percent.

ወንጠራዥ 1ሀ- ጠቅላላ የ ሽግግር ዋጋ መጠኛ ኢንዱክስ በሥራ የተሳተፉ ክፍሎች በአገር አቀፍ ደረጃ
 ታህሳስ 1999 = 100

Table 1a: General Consumer Price Index and Its Components at Country Level
 December 2006 = 100

ወርና ዓመት	ጠቅላላ ኢንዱክስ General Index	ጠቅላላ ምግብ ኢንዱክስ Food Total	ጠቅላላ ምግብ ካልሆኑ ኢንዱክስ Non-Food Total	ምግብ ካልሆኑ የኢንዱክስ ክፍሎች Non-food Consumer Price Index Components										Month and Year	
				መጠጥ Beverages	ሲጃራና ትምብሆ Cigarettes and Tobacco	ልዩነት መግቢያ Clothing and Footwear	የቤት ኪራይ የቤት መሥሪያ ስቃዎች+ውሃ ነጻድናሃይል House Rent, Construction Materials, Water, and Fuel and Power	የቤት ስቃዎች የቤት ግዝጊያዎች የቤት ተሳታፊዎች የቤት ሠራተኛ ደመወዝ Furniture, Furnishings, Household Equipment and Operation	ሕክምና Medical Care and Health	ትራንስፖርትና መገናኛ Transport and Communication	መዝናኛና ትምህርት Recreation, Entertainment and Education	የግል ጉልበትና ስቃዎች Personal Care and Effects	ሌሎች ስቃዎች Miscellaneous Goods		
ታህሳስ 1999	100.0	100.0	100.0	100.0	100.0	100.0	100.0	100.0	100.0	100.0	100.0	100.0	100.0	100.0	December 2006
ሐምሌ 1999 - ሰኔ 2000	126.9	137.2	113.3	113.5	107.8	117.0	112.0	125.5	111.9	105.3	106.9	112.6	104.7	104.7	July 2007 - June 2008
2000															2007/2008
መጋቢት 2000	135.2	146.9	119.6	118.8	119.9	121.0	119.5	135.4	114.2	112.3	110.2	118.3	106.2	106.2	March "
ጊዳር 2000	137.2	149.8	120.5	120.5	114.0	121.9	120.3	138.0	116.1	112.0	111.0	120.6	106.8	106.8	April "
ግንቦት 2000	147.8	166.3	123.3	126.9	115.9	126.5	122.4	141.7	117.3	112.0	110.4	126.4	108.8	108.8	May "
ሰኔ 2000	166.7	195.2	128.8	144.7	118.4	129.5	129.8	145.1	119.9	112.1	113.1	127.7	109.9	109.9	June "
2001															2008/2009
ሐምሌ 2000	179.9	216.6	131.2	166.9	125.5	131.6	130.5	148.4	120.8	112.1	115.4	131.3	111.8	111.8	July 2008
ክሐሴ 2000	182.3	218.5	134.3	171.6	131.2	135.9	133.5	151.4	122.6	112.1	118.3	134.3	113.3	113.3	August "
መስከረም 2001	184.1	220.6	135.5	173.8	131.4	138.8	133.8	153.2	124.0	112.2	120.1	134.8	116.1	116.1	September "
ጥቅምት 2001	182.0	214.3	139.2	176.3	132.6	141.7	138.2	155.6	125.7	124.2	121.4	134.5	115.0	115.0	October "
ገብር 2001	175.1	202.2	139.2	175.2	133.5	146.6	136.1	157.2	125.8	120.0	123.6	138.0	115.0	115.0	November "
ታህሳስ 2001	165.0	184.3	139.4	174.3	136.0	148.6	136.7	157.5	124.8	113.6	124.0	137.2	113.6	113.6	December "
ጥር 2001	165.6	185.3	139.5	177.0	139.7	150.4	136.3	158.1	126.3	109.0	124.8	138.6	113.4	113.4	January 2009
ፀደቅ 2001	167.1	186.1	141.8	178.1	148.1	156.4	137.0	163.5	128.1	107.5	126.4	144.4	114.3	114.3	February "
መጋቢት 2001	167.2	185.9	142.5	177.4	151.9	158.4	136.5	165.1	131.8	107.7	128.7	148.4	116.3	116.3	March "
ጊዳር 2001	169.2	187.8	144.6	178.8	153.1	160.8	139.0	167.7	132.3	108.3	131.0	152.3	116.9	116.9	April "
ግንቦት 2001	168.8	185.6	146.4	178.9	154.9	162.8	140.6	169.3	136.1	111.3	131.7	153.6	119.6	119.6	May "

ወንጠራዊ ደረጃ - ጠቅላላ የ ሽግግሮች ዋጋ መመዘኛ ኢንዱስትሪ ማጠቃለያ በአገር አቀፍ እና በክልሎች ደረጃ
 ታህሳስ 1999 = 100

Table 2a: Summary of General Consumer Price Indices at Country and Regional Levels
 December 2006=100

ወርና ዓመት	Reporting Level												Month and Year	
	Eth.	A.A.	Afar	Amhara	B.Gumuz	D.Dawa	Gambela	Harari	Oromia	SNNP	Somalia	Tigray		
ታህሳስ 1999	100.0	100.0	100.0	100.0	100.0	100.0	100.0	100.0	100.0	100.0	100.0	100.0	100.0	December 2006
ሐምሌ 1999 - በኔ 2000	126.9	121.8	124.3	127.8	137.7	125.6	123.7	119.1	129.0	125.6	118.5	130.1	130.1	July 2007 - June 2008
2000														2007/2008
መጋቢት 2000	135.2	129.7	126.8	131.2	148.0	132.8	125.9	123.6	139.4	135.9	125.3	137.7	137.7	March "
ሚያዝያ 2000	137.2	130.3	128.2	132.5	146.9	135.1	123.6	127.5	141.9	139.1	127.3	139.7	139.7	April "
ጥንተት 2000	147.8	140.0	140.9	144.7	151.9	143.2	137.9	144.4	154.6	148.0	136.4	146.6	146.6	May "
በኔ 2000	166.7	149.8	150.2	162.8	176.1	153.4	161.9	156.2	173.1	174.7	151.5	173.0	173.0	June "
2001														2008/2009
ሐምሌ 2000	179.9	155.4	162.3	180.5	201.4	160.4	197.8	163.7	188.3	184.1	167.8	187.5	187.5	July 2008
ኔሐሴ 2000	182.3	156.6	164.4	182.5	212.9	167.9	217.2	170.1	190.4	185.3	174.6	192.7	192.7	August "
መስከረም 2001	184.1	157.9	165.1	185.1	218.6	168.4	218.0	171.6	190.9	187.5	178.2	199.3	199.3	September "
ጥቅምት 2001	182.0	160.8	164.6	185.1	204.7	169.8	219.7	173.6	187.9	181.1	175.1	198.5	198.5	October "
ገዳር 2001	175.1	159.7	159.2	179.9	200.6	167.4	194.6	169.4	179.8	172.3	170.1	187.8	187.8	November "
ታህሳስ 2001	165.0	155.0	152.1	166.5	186.9	166.5	180.9	166.1	168.2	164.9	154.8	177.8	177.8	December "
ጥር 2001	165.6	153.2	152.3	164.6	178.9	164.9	176.3	165.4	171.7	164.9	164.3	174.3	174.3	January 2009
ፀደቅት 2001	167.1	155.0	153.8	164.8	181.3	167.8	178.5	169.5	173.6	166.2	169.9	174.8	174.8	February "
መጋቢት 2001	167.2	156.6	154.1	163.5	184.3	168.4	177.2	169.5	173.8	166.5	169.3	176.9	176.9	March "
ሚያዝያ 2001	169.2	159.0	156.7	165.0	184.5	169.5	180.5	170.1	175.5	170.3	171.9	178.0	178.0	April "
ጥንተት 2001	168.8	160.6	156.9	163.4	184.4	169.7	186.1	170.6	174.9	171.1	173.5	173.1	173.1	May "

ሠንጠረዥ 3 ሀ:- ጠቅላላ የሽግግር ዋጋ መመዘኛ ሊንደክስ በሥነ- የተካተቱ ክፍሎች ለአዲስ አበባ ከተማ መስተዳድር
 ታህሳስ 1999 = 100

Table 3a: General Consumer Price Index and Its Components for Addis Ababa City Administration
 December 2006 = 100

ወርና ዓመት	ጠቅላላ ሊንደክስ General Index	ጠቅላላ የምግብ ሊንደክስ Food Total	ጠቅላላ የምግብ ክፍል ሊንደክስ Non-Food Total	Non-food Consumer Price Index Components											Month and Year
				የምግብ ክፍል ሊንደክስ Beverages	ቢሻሬና ትምባዩ Cigarettes and Tobacco	ላብስና መጫጫያ Clothing and Footwear	የቤት ኪራይ የቤት መሥሪያ ስቃዎች+ውሃ ነጻድናገደል House Rent, Construction Materials, Water, and Fuel and Power	የቤት ስቃዎች የቤት ግንባታዎች የቤት ተሳታፊዎች የቤት ሠራተኛ ደመወዝ Furniture, Furnishings, Household Equipment and Operation	ሕክምና Medical Care and Health	ትራንስፖርትና መገናኛ Transport and Communication	መዝናኛና ትምህርት Recreation, Entertainment and Education	የገልጻል ጽግራ ስቃዎች Personal Care and Effects	ሌሎች ስቃዎች Miscellaneous Goods		
ታህሳስ 1999	100.0	100.0	100.0	100.0	100.0	100.0	100.0	100.0	100.0	100.0	100.0	100.0	100.0	100.0	December 2006
ሐምሌ 1999 - ሰኔ 2000	121.8	134.8	112.8	127.4	108.7	127.9	106.2	132.3	124.3	102.3	104.4	118.6	104.7	104.7	July 2007 - June 2008
2000															2007/2008
መጋቢት 2000	129.7	142.6	120.7	134.8	121.3	136.1	114.1	146.7	132.5	109.2	107.6	127.1	106.1	106.1	March "
ሚያዝያ 2000	130.3	143.2	121.4	134.2	117.3	136.2	115.2	147.5	131.4	108.4	110.1	129.5	107.6	107.6	April "
ግንቦት 2000	140.0	163.5	123.7	143.6	118.6	138.8	117.3	153.3	132.4	108.4	110.5	132.4	110.9	110.9	May "
ሰኔ 2000	149.8	183.9	126.2	153.8	118.6	143.9	119.7	156.0	133.1	108.5	110.3	136.5	115.1	115.1	June "
2001															2008/2009
ሐምሌ 2000	155.4	195.2	127.7	174.1	127.9	148.3	119.7	155.6	145.6	108.3	108.5	139.5	117.0	117.0	July 2008
ነሐሴ 2000	156.6	197.5	128.2	174.4	129.7	151.3	118.7	157.7	141.4	108.4	109.3	139.5	121.7	121.7	August "
መስከረም 2001	157.9	198.8	129.4	178.1	129.2	155.6	118.6	160.0	141.0	108.4	112.7	140.0	121.6	121.6	September "
ጥቅምት 2001	160.8	196.8	135.8	177.4	129.0	158.1	126.6	161.7	145.8	123.9	114.8	140.9	121.5	121.5	October "
ኅዳር 2001	159.7	194.8	135.3	177.7	144.3	160.0	121.8	165.9	145.8	122.3	119.7	144.0	121.6	121.6	November "
ታህሳስ 2001	155.0	184.8	134.4	174.7	163.6	162.9	121.1	163.5	145.2	116.4	124.2	142.0	121.8	121.8	December "
ጥር 2001	153.2	181.9	133.3	174.3	172.0	164.5	118.5	164.7	145.9	113.0	123.9	143.0	123.1	123.1	January 2009
የካቲት 2001	155.0	183.4	135.2	178.3	179.0	169.8	119.1	168.5	144.1	113.0	127.0	148.1	123.1	123.1	February "
መጋቢት 2001	156.6	186.0	136.2	179.4	183.1	172.5	119.2	170.5	145.9	113.0	128.8	152.1	121.3	121.3	March "
ሚያዝያ 2001	159.0	189.4	137.9	182.9	180.2	178.1	119.6	172.2	146.1	112.9	130.1	155.0	132.1	132.1	April "
ግንቦት 2001	160.6	191.0	139.5	180.1	170.3	176.7	121.2	174.2	148.6	117.4	131.3	155.7	134.4	134.4	May "

ወንጠራዥ ልሀ፡ ጠቅላላ የ ሽግግሮች ዋጋ መመዘኛ ሊንደክስ ስሥሩ የተካተቱ ክፍሎች ለሌላ ሁለተኛ መንግሥት ታህሳስ 1999 = 100

Table 4a: General Consumer Price Index and Its Components for the Afar Regional State December 2006 = 100

ወርና ዓመት	ጠቅላላ ሊንደክስ General Index	ጠቅላላ የምግብ ሊንደክስ Food Total	ጠቅላላ የምግብ ክፍል ሊንደክስ Non-Food Total	Non-food Consumer Price Index Components											Month and Year	
				የምግብ ክፍል ሊንደክስ Beverages	ሲጃራትና ትብብር Cigarettes and Tobacco	ልብና መጫጫ Clothing and Footwear	የቤት ኪራይ፣ የቤት መሥሪያ ስቃዎች፣ውሃ፣ ነጻጅናሃይል House Rent, Construction Materials, Water, and Fuel and Power	የቤት ግንቢያዎች የቤት ተሳታፊዎች ደመወዝ Furniture, Furnishings, Household Equipment and Operation	ሕክምና Medical Care and Health	ትራንስፖርትና መገናኛ Transport and Communication	መዝናኛና ትምህርት Recreation, Entertainment and Education	የግል ንጽባናና የግል ጽግ ስቃዎች Personal Care and Effects	ሌሎች ስቃዎች Miscellaneous Goods			
ታህሳስ 1999	100.0	100.0	100.0	100.0	100.0	100.0	100.0	100.0	100.0	100.0	100.0	100.0	100.0	100.0	100.0	December 2006
ሐምሌ 1999 - ሰኔ 2000	124.3	136.1	110.2	109.2	102.5	114.5	107.3	113.8	100.6	124.4	92.2	107.2	101.5	101.5	101.5	July 2007 - June 2008
2000																2007/2008
መጋቢት 2000	126.8	137.9	113.6	109.0	106.1	117.7	109.3	122.1	100.6	130.8	95.8	109.2	102.6	102.6	102.6	March "
ሚያዝያ 2000	128.2	139.4	114.9	110.3	105.7	118.3	110.4	125.7	106.9	130.8	96.0	108.2	102.6	102.6	102.6	April "
ግንቦት 2000	140.9	161.9	115.9	111.5	107.0	119.2	111.7	127.8	102.3	130.3	95.3	110.7	102.6	102.6	102.6	May "
ሰኔ 2000	150.2	178.4	116.6	113.9	109.6	122.3	109.5	132.2	100.9	130.8	92.5	114.9	102.4	102.4	102.4	June "
2001																2008/2009
ሐምሌ 2000	162.3	198.7	119.1	132.3	118.0	123.6	112.3	135.6	89.2	130.8	95.3	118.6	104.4	104.4	104.4	July 2008
ኔሐሴ 2000	164.4	200.6	121.4	132.3	123.4	132.6	111.6	137.0	93.0	130.8	97.9	118.0	104.3	104.3	104.3	August "
መስከረም 2001	165.1	201.0	122.4	134.5	131.3	131.3	112.4	138.9	115.4	130.8	102.2	120.6	105.3	105.3	105.3	September "
ጥቅምት 2001	164.6	200.0	122.4	129.7	132.5	129.4	112.9	139.3	116.3	133.1	104.4	121.1	106.6	106.6	106.6	October "
ገዳሪ 2001	159.2	192.5	119.6	129.7	132.8	128.6	108.6	139.8	112.5	117.7	101.9	119.7	106.7	106.7	106.7	November "
ታህሳስ 2001	152.1	180.2	118.7	129.7	132.8	126.8	108.5	141.0	107.2	106.0	107.6	119.6	106.7	106.7	106.7	December "
ጥር 2001	152.3	180.1	119.4	129.7	136.8	131.6	107.8	141.0	106.8	97.7	109.7	122.3	106.7	106.7	106.7	January 2009
የካቲት 2001	153.8	182.1	120.1	134.0	136.8	133.6	107.7	141.2	106.8	97.7	115.0	123.1	107.4	107.4	107.4	February "
መጋቢት 2001	154.1	181.5	121.5	137.9	133.9	134.0	108.0	146.6	115.5	97.7	116.1	125.4	108.6	108.6	108.6	March "
ሚያዝያ 2001	156.7	185.0	123.1	142.3	132.6	133.6	109.9	152.5	112.7	97.7	115.4	127.7	109.0	109.0	109.0	April "
ግንቦት 2001	156.9	185.3	123.1	149.6	132.6	134.7	107.5	154.4	114.2	103.4	115.5	125.4	109.6	109.6	109.6	May "

ወንጠራዎች 50:- ጠቅላላ የ ሽግግሮች ዋጋ መመዘኛ ኢንዱክስ በሥሩ የተከተቱ ክፍሎች ለአገራ ከላላዊ መንግሥት ታህሳስ 1999 = 100

Table 5a: General Consumer Price Index and Its Components for the Amhara Regional State
December 2006 = 100

ወርና ዓመት	ጠቅላላ ኢንዱክስ General Index	ጠቅላላ የምግብ ኢንዱክስ Food Total	ጠቅላላ የምግብ ክፍል ኢንዱክስ Non-Food Total	Non-food Consumer Price Index Components											Month and Year
				የምግብ ክፍል Beverages	ሲጃራና ትምባሆ Cigarettes and Tobacco	ልብና መጫጫ Clothing and Footwear	የቤት ኪራይ የቤት ግዝጊያዎች ስቃዎች+ውሃ ነጻጅናሃይል House Rent, Construction Materials, Water, and Fuel and Power	የቤት ስቃዎች የቤት ግዝጊያዎች የቤት ሠራተኛ ደመወዝ Furniture, Furnishings, Household Equipment and Operation	ዕክምና Medical Care and Health	ትራንስፖርትና ግናዎች Transport and Communication	መዝናኛና ትምህርት Recreation, Entertainment and Education	የግል ንጽባናና የግል ጽጌ ስቃዎች Personal Care and Effects	ሌሎች ስቃዎች Miscellaneous Goods		
ታህሳስ 1999	100.0	100.0	100.0	100.0	100.0	100.0	100.0	100.0	100.0	100.0	100.0	100.0	100.0	100.0	December 2006
ሐምሌ 1999 - ሰኔ 2000	127.8	139.6	108.4	112.4	115.8	109.5	105.8		120.9	112.8	106.6	108.2	117.8	101.6	July 2007 - June 2008
2000															2007/2008
መጋቢት 2000	131.2	142.5	112.6	115.7	128.4	113.7	108.9		131.2	118.8	116.5	110.5	126.8	102.8	March "
ግድም 2000	132.5	145.0	111.9	117.4	127.1	111.8	107.9		131.0	124.0	116.5	112.8	127.0	103.3	April "
ግንቦት 2000	144.7	164.3	112.5	128.9	129.9	112.6	106.3		135.3	121.1	116.5	114.3	139.6	102.9	May "
ሰኔ 2000	162.8	190.4	117.3	146.6	131.3	115.7	112.0		139.1	122.6	116.4	114.2	138.2	102.8	June "
2001															2008/2009
ሐምሌ 2000	180.5	216.5	121.5	190.9	145.5	115.0	115.4		142.5	121.7	116.4	115.2	141.3	103.1	July 2008
ኔሐሴ 2000	182.5	218.0	124.2	199.5	141.2	121.1	117.0		144.1	121.3	116.4	118.1	144.3	103.2	August "
መስከረም 2001	185.1	221.4	125.5	202.5	145.7	122.6	117.5		149.6	116.6	116.6	121.7	147.8	103.2	September "
ጥቅምት 2001	185.1	220.9	126.2	201.4	147.0	125.4	118.4		147.1	118.0	122.1	122.1	139.4	103.2	October "
ገዳር 2001	179.9	212.2	126.9	202.5	147.0	129.6	117.7		150.3	118.5	119.0	123.2	142.1	103.2	November "
ታህሳስ 2001	166.5	190.7	126.8	202.4	148.0	131.4	116.7		152.5	118.5	113.4	123.5	143.4	103.2	December "
ጥር 2001	164.6	187.8	126.6	201.3	147.7	132.8	115.6		155.6	123.2	107.8	124.0	144.5	103.2	January 2009
የካቲት 2001	164.8	185.9	130.0	199.1	152.8	136.7	119.2		162.1	123.9	108.2	130.5	148.1	103.2	February "
መጋቢት 2001	163.5	184.0	129.9	190.9	161.8	138.7	118.0		164.9	129.5	108.4	132.0	152.2	103.9	March "
ግድም 2001	165.0	184.5	133.0	197.1	169.1	143.1	120.7		167.3	128.6	108.4	136.8	158.0	103.7	April "
ግንቦት 2001	163.4	180.8	134.8	198.1	175.6	145.6	122.8		167.1	134.1	109.5	141.2	157.2	103.9	May "

ወንጠራዥ 60:- ጠቅላላ የ ሽንጃዎች ዋጋ መጠኛ ሊንደክስ በሥሩ የተካተቱ ክፍሎች ለቤኔሽንጎል ገምዝ ክልል መገንጠት
 ታህሳስ 1999 = 100

Table 6a: General Consumer Price Index and Its Components for the Benishangul Gumuz Regional State
 December 2006 = 100

ወርና ዓመት	ጠቅላላ ሊንደክስ General Index	ጠቅላላ ምግብ ሊንደክስ Food Total	ጠቅላላ ምግብ ነፃ ሊንደክስ Non-Food Total	Non-food Consumer Price Index Components											Month and Year
				ምግብ ነፃ ያልሆኑ የሊንደክስ ክፍሎች	መጠጥ	ቤሽራና ትምባሆ	ላብስና መጫጫያ	የቤት ቢራይቲ የቤት መሥሪያ ስቃዎች+ውሃ ነጻድናሃይል	የቤት ስቃዎች የቤት ግንባታዎች የቤት ተሳታፊዎች የቤት ሠራተኛ ደመወዝ	ሕክምና	ትራንስፖርትና መገናኛ	መዝናኛና ትምህርት	የግል ገንቢና ስቃዎች	ሌሎች ስቃዎች	
				Beverages	Cigarettes and Tobacco	Clothing and Footwear	House Rent, Construction Materials, Water, and Fuel and Power	Furniture, Furnishings, Household Equipment and Operation	Medical Care and Health	Transport and Communication	Recreation, Entertainment and Education	Personal Care and Effects	Miscellaneous Goods		
ታህሳስ 1999	100.0	100.0	100.0	100.0	100.0	100.0	100.0	100.0	100.0	100.0	100.0	100.0	100.0	100.0	December 2006
ሐምሌ 1999 - ሰኔ 2000	137.7	148.2	123.7	111.2	113.2	123.8	141.3	114.6	111.0	101.0	112.2	115.2	103.3	July 2007 - June 2008	
2000														2007/2008	
መጋቢት 2000	148.0	161.2	130.6	120.1	116.9	135.2	147.3	120.8	118.1	100.4	117.5	125.5	105.1	March "	
ሚያዝያ 2000	146.9	160.0	129.6	121.1	119.5	136.1	143.3	120.0	120.1	100.4	118.5	129.5	104.2	April "	
ግንቦት 2000	151.9	167.9	130.7	122.4	120.5	137.2	144.3	122.1	118.1	100.4	120.3	130.7	106.5	May "	
ሰኔ 2000	176.1	206.4	136.1	123.3	125.2	138.6	152.2	134.1	123.8	100.4	119.7	134.8	107.6	June "	
2001														2008/2009	
ሐምሌ 2000	201.4	246.8	141.4	143.3	144.0	140.9	148.4	150.1	130.0	100.4	143.4	137.7	109.2	July 2008	
ነሐሴ 2000	212.9	262.9	146.9	149.2	143.3	142.0	158.7	151.1	137.4	100.4	154.4	140.4	111.1	August "	
መስከረም 2001	218.6	272.8	146.8	148.3	137.9	147.2	158.5	146.0	138.1	100.4	155.4	141.3	111.1	September "	
ጥቅምት 2001	204.7	246.6	149.4	148.6	133.8	151.4	159.4	152.8	138.4	106.9	158.1	139.0	113.3	October "	
ኅዳር 2001	200.6	237.8	151.5	149.5	140.1	160.8	157.6	157.2	140.6	106.9	158.4	143.4	114.4	November "	
ታህሳስ 2001	186.9	215.0	149.8	148.2	140.0	159.3	152.2	161.1	140.0	106.7	158.8	141.6	116.3	December "	
ጥር 2001	178.9	199.4	151.8	148.8	141.7	163.4	155.6	161.6	149.0	100.1	158.5	141.4	118.4	January 2009	
የካቲት 2001	181.3	202.2	153.6	150.5	144.5	163.9	159.1	163.7	151.8	96.1	158.6	146.3	114.6	February "	
መጋቢት 2001	184.3	206.8	154.7	150.7	163.1	162.1	161.8	163.2	150.0	96.1	161.7	153.5	113.6	March "	
ሚያዝያ 2001	184.5	206.1	156.0	153.3	164.3	161.1	165.5	162.9	147.2	96.1	164.1	157.8	107.6	April "	
ግንቦት 2001	184.4	205.1	157.0	154.1	164.8	161.8	167.6	162.7	149.5	96.1	165.5	157.3	107.6	May "	

ሠንጠረዥ 7ሀ- ጠቅላላ የሽግግር ዋጋ መመዘኛ ኢንዱስትሪ ቢሥሩ የተካተቱ ክፍሎች ለድረጃዎ ለስተዳደር ካውንሳል
 ታህሳስ 1999 = 100

Table 7a: General Consumer Price Index and Its Components for the Dire Dawa Administrative Council
 December 2006 = 100

ወርና ዓመት	ጠቅላላ ኢንዱስትሪ General Index	ጠቅላላ የምግብ ኢንዱስትሪ Food Total	ጠቅላላ የምግብ ካልኢንዱስትሪ Non-Food Total	Non-food Consumer Price Index Components											Month and Year	
				ምግብ ካል Beverages	ቢሻሬና ትምባሆ Cigarettes and Tobacco	ላብሳና መጓጊያ Clothing and Footwear	የቤት ቢራይሪ የቤት መሥሪያ ስቃዎች+ውሃ ነጻድናሃይል House Rent, Construction Materials, Water, and Fuel and Power	የቤት ስቃዎች የቤት ግንባታዎች የቤት ተሳታፊዎች የቤት ሠራተኛ ደመወዝ Furniture, Furnishings, Household Equipment and Operation	ሕክምና Medical Care and Health	ትራንስፖርትና መገናኛ Transport and Communication	መዝናኛና ትምህርት Recreation, Entertainment and Education	የግል ጽግራ ስቃዎች Personal Care and Effects	ሌሎች ስቃዎች Miscellaneous Goods			
ታህሳስ 1999	100.0	100.0	100.0	100.0	100.0	100.0	100.0	100.0	100.0	100.0	100.0	100.0	100.0	100.0	100.0	December 2006
ሐምሌ 1999 - ሰኔ 2000	125.6	135.4	115.6	113.2	101.2	109.2	120.9	124.5	115.8	105.5	116.8	108.2	102.9			July 2007 - June 2008
2000																2007/2008
መጋቢት 2000	132.8	146.2	119.0	118.2	100.7	110.8	122.8	132.3	123.2	109.9	120.2	109.9	106.3			March "
ሚያዝያ 2000	135.1	148.5	121.4	118.6	100.7	113.7	126.6	136.2	120.8	109.9	121.0	110.6	103.1			April "
ግንቦት 2000	143.2	161.8	124.1	121.4	103.6	121.2	128.8	136.7	123.7	109.1	123.3	111.0	103.1			May "
ሰኔ 2000	153.4	180.5	125.6	124.5	103.6	115.6	136.7	140.3	124.1	105.4	123.4	111.1	104.6			June "
2001																2008/2009
ሐምሌ 2000	160.4	192.8	126.9	153.3	108.1	113.9	137.4	142.2	126.8	105.4	128.0	113.7	106.3			July 2008
ነሐሴ 2000	167.9	204.3	130.4	155.3	106.7	117.1	143.1	143.9	139.6	105.4	129.6	114.7	106.3			August "
መስከረም 2001	168.4	204.4	131.3	156.3	112.6	120.7	142.0	146.5	138.9	105.5	127.7	118.5	106.3			September "
ጥቅምት 2001	169.8	205.4	133.1	157.0	112.6	124.9	142.8	150.6	138.0	107.4	126.3	116.7	106.3			October "
ኅዳር 2001	167.4	200.7	133.2	157.0	108.6	126.4	139.7	154.6	138.0	100.7	137.5	118.5	106.3			November "
ታህሳስ 2001	166.5	197.8	134.2	157.0	112.6	129.3	139.1	156.2	138.2	99.2	141.7	119.4	106.3			December "
ጥር 2001	164.9	195.8	133.1	155.2	114.5	129.8	136.5	154.4	142.3	98.3	141.1	118.3	106.3			January 2009
የካቲት 2001	167.8	198.5	136.2	155.4	112.5	135.1	139.2	161.7	140.2	100.4	139.0	119.4	106.3			February "
መጋቢት 2001	168.4	199.5	136.5	162.7	112.6	130.6	139.2	166.7	141.2	100.6	140.0	123.0	106.3			March "
ሚያዝያ 2001	169.5	198.5	139.6	165.9	120.5	134.0	143.7	172.7	139.2	100.6	139.7	122.6	106.3			April "
ግንቦት 2001	169.7	198.4	140.1	162.9	122.4	137.6	142.2	172.3	141.5	101.6	140.5	121.9	111.5			May "

ሠንጠረዥ 8ሀ፡- ጠቅላላ የ ሽግግር ዋጋ መመዘኛ ሊንደክስ በሥሩ የተካተቱ ክፍሎች ሊጋገቡላቸዋል ስለላይ መገንጠት ታህሳስ 1999 = 100

Table 8a: General Consumer Price Index and Its Components for the Gambela Peoples Regional State December 2006 = 100

ወርና ዓመት	ጠቅላላ ሊንደክስ General Index	ጠቅላላ ምንጠ ሊንደክስ Food Total	ጠቅላላ ምንጠ ነክ ያልሆኑ ሊንደክስ Non-Food Total	Non-food Consumer Price Index Components											Month and Year
				ምንጠ ነክ ያልሆኑ የሊንደክስ ክፍሎች Beverages	ሲጃራና ትምባሆ Cigarettes and Tobacco	ላብሰና መጫጊያ Clothing and Footwear	የቤት ቢራይዳ የቤት መሥሪያ ስቃዎች+ውሃ ነጻድናሃይል House Rent, Construction Materials, Water, and Fuel and Power	የቤት ስቃዎች የቤት ግንባታዎች የቤት ተሳታፊዎች የቤት ሠራተኛ ደመወዝ Furniture, Furnishings, Household Equipment and Operation	ሕክምና Medical Care and Health	ትራንስፖርትና መገናኛ Transport and Communication	መዝናኛና ትምህርት Recreation, Entertainment and Education	የገልጻ ጽግራ ስቃዎች Personal Care and Effects	ሌሎች ስቃዎች Miscellaneous Goods		
ታህሳስ 1999	100.0	100.0	100.0	100.0	100.0	100.0	100.0	100.0	100.0	100.0	100.0	100.0	100.0	0.0	December 2006
ሐምሌ 1999 - ሰኔ 2000	123.7	133.8	111.2	120.8	107.8	108.3	107.6	123.5	116.4	105.9	108.4	103.5	0.0	July 2007 - June 2008	
2000															2007/2008
መጋቢት 2000	125.9	134.4	115.3	126.0	115.1	114.2	108.0	134.5	119.5	114.1	112.3	103.3	0.0	March "	
ጊዳር 2000	123.6	131.4	113.8	125.4	109.8	112.5	108.1	128.9	119.6	114.1	110.0	102.6	0.0	April "	
ግንቦት 2000	137.9	151.6	120.8	126.7	110.2	116.9	117.6	152.9	120.9	114.1	111.8	103.6	0.0	May "	
ሰኔ 2000	161.9	189.6	127.4	126.9	115.8	122.7	127.2	164.8	122.6	114.1	115.4	107.0	0.0	June "	
2001															2008/2009
ሐምሌ 2000	197.8	248.8	134.5	161.5	122.0	131.5	124.7	170.1	122.0	114.1	113.5	111.8	0.0	July 2008	
ነሐሴ 2000	217.2	276.8	143.2	161.5	127.0	137.4	141.3	177.1	123.3	114.1	111.8	114.7	0.0	August "	
መስከረም 2001	218.0	269.0	154.5	200.4	130.6	138.1	152.2	177.9	130.2	114.1	127.8	116.6	0.0	September "	
ጥቅምት 2001	219.7	271.2	155.6	200.4	132.3	142.0	152.9	176.2	130.2	114.1	130.7	116.0	0.0	October "	
ኅዳር 2001	194.6	224.5	157.5	205.4	132.3	146.4	152.9	176.6	130.2	114.1	142.3	114.7	0.0	November "	
ታህሳስ 2001	180.9	200.8	156.1	199.0	131.2	148.5	153.0	171.2	128.9	110.1	144.2	112.1	0.0	December "	
ጥር 2001	176.3	198.9	148.1	199.0	129.9	137.2	138.2	169.9	128.3	110.1	144.1	111.8	0.0	January 2009	
የካቲት 2001	178.5	198.5	153.6	199.0	133.9	141.6	148.1	174.1	131.0	110.1	143.0	114.3	0.0	February "	
መጋቢት 2001	177.2	197.6	151.9	199.0	136.6	142.2	142.2	175.3	129.5	111.8	145.4	113.7	0.0	March "	
ጊዳር 2001	180.5	201.9	153.8	202.6	137.2	139.3	146.4	175.0	133.5	111.8	152.2	114.2	0.0	April "	
ግንቦት 2001	186.1	212.6	153.1	203.6	144.9	143.4	141.5	169.5	137.4	111.8	153.1	115.0	0.0	May "	

ሠንጠረዥ 9ሀ፡ ጠቅላላ የ ሽግግሮች ዋጋ መመዘኛ ኢንዱስትሪ ቢሥሩ የተካተቱ ክፍሎች ለሐረሪ ክልል መገንጠት
 ታህሳስ 1999 = 100

Table 9a: General Consumer Price Index and Its Components for the Harari People Regional State
 December 2006 = 100

ወርና ዓመት	ጠቅላላ ኢንዱስትሪ	ጠቅላላ የምግብ ኢንዱስትሪ	ጠቅላላ የምግብ ክፍል ኢንዱስትሪ	Non-food Consumer Price Index Components											Month and Year
				የምግብ ክፍል	ቤዕራና ትምባሆ	ላብሳና መጫጫያ	የቤት ቢራይስጥ የቤት መሥሪያ ስቃዎች+ውሃ ነጻድናሃይል	የቤት ስቃዎች የቤት ግብደታዎች የቤት ተሳታፊዎች የቤት ሠራተኛ ደመወዝ	ሕክምና	ትራንስፖርትና ግንኙነት	መዝናኛና ትምህርት	የግል ገንቢና ስቃዎች	ሌሎች ስቃዎች		
	General Index	Food Total	Non-Food Total	Beverages	Cigarettes and Tobacco	Clothing and Footwear	House Rent, Construction Materials, Water, and Fuel and Power	Furniture, Furnishings, Household Equipment and Operation	Medical Care and Health	Transport and Communication	Recreation, Entertainment and Education	Personal Care and Effects	Miscellaneous Goods		
ታህሳስ 1999	100.0	100.0	100.0	100.0	100.0	100.0	100.0	100.0	100.0	100.0	100.0	100.0	100.0	December 2006	
ሐምሌ 1999 - ሰኔ 2000	119.1	130.4	108.5	107.9	106.4	111.0	108.8	109.1	99.7	108.8	102.4	117.1	100.7	July 2007 - June 2008	
2000														2007/2008	
መጋቢት 2000	123.6	134.9	113.0	107.5	104.5	116.5	115.1	113.8	94.2	121.2	100.3	121.4	98.5	March "	
ጊዳር 2000	127.5	139.9	115.9	109.5	106.8	117.9	120.0	115.7	94.4	121.2	105.7	122.8	99.4	April "	
ግንቦት 2000	144.4	169.0	121.4	112.8	111.1	124.3	128.3	121.6	96.3	121.2	105.9	125.7	104.9	May "	
ሰኔ 2000	156.2	191.2	123.5	112.8	118.0	130.3	127.9	123.0	97.1	121.2	106.9	128.3	113.3	June "	
2001														2008/2009	
ሐምሌ 2000	163.7	201.0	128.8	154.2	129.8	134.3	130.6	124.1	98.7	130.4	106.9	129.5	116.6	July 2008	
ነሐሴ 2000	170.1	214.3	128.9	153.3	123.6	135.7	129.6	126.5	98.0	130.4	108.1	130.7	116.0	August "	
መስከረም 2001	171.6	213.9	132.0	153.5	123.6	143.8	130.9	128.2	99.3	130.4	115.2	129.1	118.8	September "	
ጥቅምት 2001	173.6	213.9	136.0	156.8	123.6	145.2	139.2	132.0	106.8	131.8	114.5	134.9	118.3	October "	
ኅዳር 2001	169.4	207.3	134.0	160.7	123.6	145.4	132.6	130.1	107.6	130.8	115.1	139.2	118.8	November "	
ታህሳስ 2001	166.1	198.7	135.7	160.8	151.9	144.2	134.1	132.0	107.3	129.4	117.0	140.1	120.1	December "	
ጥር 2001	165.4	195.9	136.8	160.8	180.7	152.7	128.6	137.9	107.6	118.7	118.7	139.0	117.3	January 2009	
የካቲት 2001	169.5	202.8	138.4	160.5	188.9	155.6	131.0	136.6	106.7	118.7	118.2	140.0	118.5	February "	
መጋቢት 2001	169.5	201.9	139.2	163.5	201.7	156.8	129.3	137.9	108.0	118.7	120.4	142.3	118.5	March "	
ጊዳር 2001	170.1	202.3	140.1	163.5	201.7	157.8	129.2	142.0	107.8	118.7	123.4	141.5	118.5	April "	
ግንቦት 2001	170.6	202.6	140.8	164.0	211.9	160.8	125.8	143.9	107.8	119.4	128.0	141.4	118.5	May "	

ወንጠርኹ 100:- ጠቅላላ የ ሽግግር ዋጋ መመዘኛ ኢንዱስትሪ ቢሥራ የተካተቱ ክፍሎች ለአርጋጊ ክልላዊ መገገሥት
 ታህሳስ 1999 = 100

Table 10a: General Consumer Price Index and Its Components for the Oromiya Regional State
 December 2006 = 100

ወርና ዓመት	ጠቅላላ ኢንዱስትሪ General Index	ጠቅላላ የምግብ ኢንዱስትሪ Food Total	ጠቅላላ የምግብ ካል-ኢንዱስትሪ Non-Food Total	Non-food Consumer Price Index Components											Month and Year	
				የምግብ ካል-ኢንዱስትሪ ክፍሎች Beverages	ሲጃራና ትምባሆ Cigarettes and Tobacco	ላብስና መጫጫያ Clothing and Footwear	የቤት ኪራይ የቤት መሥሪያ ስቃዎች+ውሃ ነጻድናገደል House Rent, Construction Materials, Water, and Fuel and Power	የቤት ስቃዎች የቤት ግንባራዎች የቤት ተሳታፊዎች የቤት ሠራተኛ ደመወዝ Furniture, Furnishings, Household Equipment and Operation	ሕክምና Medical Care and Health	ትራንስፖርትና ግንኙነት Transport and Communication	መዝናኛና ትምህርት Recreation, Entertainment and Education	የገልጽ ጽግራ ስቃዎች Personal Care and Effects	ሌሎች ስቃዎች Miscellaneous Goods			
ታህሳስ 1999	100.0	100.0	100.0	100.0	100.0	100.0	100.0	100.0	100.0	100.0	100.0	100.0	100.0	100.0	100.0	December 2006
ሐምሌ 1999 - ሰኔ 2000	129.0	138.7	115.0	116.5	108.2	118.7	113.6	123.7	108.9	103.3	107.2	113.4	103.2	103.2	103.2	July 2007 - June 2008
2000																2007/2008
መጋቢት 2000	139.4	151.5	121.9	123.0	122.1	123.0	121.8	133.9	113.1	107.3	111.5	118.9	105.9	105.9	105.9	March "
ሚያዝያ 2000	141.9	154.4	123.8	126.4	114.2	123.3	124.5	137.0	114.8	107.8	111.8	121.1	106.3	106.3	106.3	April "
ግንቦት 2000	154.6	173.3	127.6	132.9	116.7	130.8	126.6	140.1	116.9	107.8	110.2	128.7	111.7	111.7	111.7	May "
ሰኔ 2000	173.1	201.0	132.9	154.6	120.1	131.8	133.0	140.3	120.9	108.2	116.0	131.8	110.7	110.7	110.7	June "
2001																2008/2009
ሐምሌ 2000	188.3	223.8	136.9	168.1	125.6	133.9	135.7	145.8	123.5	108.2	119.9	133.8	115.8	115.8	115.8	July 2008
ነሐሴ 2000	190.4	224.8	140.7	177.0	134.2	138.1	138.9	148.0	127.1	108.2	123.6	140.6	116.1	116.1	116.1	August "
መስከረም 2001	190.9	226.0	140.1	174.6	133.4	139.6	136.5	148.8	128.8	108.2	124.4	139.8	120.8	120.8	120.8	September "
ጥቅምት 2001	187.9	217.9	144.5	180.7	134.6	142.5	141.8	151.9	130.8	120.9	125.9	142.0	118.8	118.8	118.8	October "
ኅዳር 2001	179.8	204.1	144.6	181.3	135.0	148.3	139.1	153.4	132.8	113.6	126.1	144.9	117.1	117.1	117.1	November "
ታህሳስ 2001	168.2	183.9	145.5	179.8	137.0	149.9	142.7	152.4	130.5	107.3	125.4	145.7	113.4	113.4	113.4	December "
ጥር 2001	171.7	188.9	146.7	189.2	141.5	151.8	142.4	153.0	131.6	102.0	124.6	147.7	114.4	114.4	114.4	January 2009
የካቲት 2001	173.6	190.0	149.9	189.2	152.3	159.3	144.3	158.8	132.6	98.4	125.0	151.2	116.4	116.4	116.4	February "
መጋቢት 2001	173.8	189.3	151.2	188.4	156.7	162.6	143.9	160.6	138.4	98.6	129.1	156.9	119.6	119.6	119.6	March "
ሚያዝያ 2001	175.5	191.1	153.0	188.8	157.1	163.9	146.9	161.0	139.1	100.7	130.8	160.2	121.2	121.2	121.2	April "
ግንቦት 2001	174.9	189.4	153.9	186.6	158.1	165.1	147.9	162.4	143.3	103.0	129.1	160.6	125.7	125.7	125.7	May "

ሠንጠረዥ 11ሀ፡ ጠቅላላ የ ሽግግር ዋጋ መመዘኛ ኢንዱክስ ቢሥሩ የተካተቱ ክፍሎች ለደብዳቤ ክልል መገንጠያ
 ታህሳስ 1999 = 100

Table 11a: General Consumer Price Index and Its Components for the SNNP Regional State
 December 2006= 100

ወርና ዓመት	ጠቅላላ ኢንዱክስ General Index	ጠቅላላ ምግብ ኢንዱክስ Food Total	ጠቅላላ ምግብ ካልሆኑ ኢንዱክስ Non-Food Total	Non-food Consumer Price Index Components											Month and Year
				ምግብ ካልሆኑ የኢንዱክስ ክፍሎች Beverages	ቢሻራና ትምባሆ Cigarettes and Tobacco	ላብሰና መጫጫያ Clothing and Footwear	የቤት ቢራይቲ የቤት መሥሪያ ስቃዎች፣ውሃና ነጻድናሃይል House Rent, Construction Materials, Water, and Fuel and Power	የቤት ስቃዎች የቤት ግብደታዎች የቤት ተሳታፊዎች የቤት ሠራተኛ ደመወዝ Furniture, Furnishings, Household Equipment and Operation	ሕኪምና Medical Care and Health	ትራንስፖርትና ግንኙነት Transport and Communication	መዝናኛና ትምህርት Recreation, Entertainment and Education	የግል ገጽቦናና ስቃዎች Personal Care and Effects	ሌሎች ስቃዎች Miscellaneous Goods		
ታህሳስ 1999	100.0	100.0	100.0	100.0	100.0	100.0	100.0	100.0	100.0	100.0	100.0	100.0	100.0	100.0	December 2006
ሐምሌ 1999 - ሰኔ 2000	125.6	131.1	118.0	118.6	104.0	117.2	117.2	134.3	109.2	124.5	106.8	106.9	106.1	July 2007 - June 2008	
2000														2007/2008	
መጋቢት 2000	135.9	142.8	126.4	122.6	119.7	121.0	129.9	143.9	110.0	140.9	109.4	109.9	106.9	March "	
ጊዳር 2000	139.1	148.0	127.0	123.0	116.0	122.8	129.4	148.0	111.0	139.6	109.3	113.6	106.9	April "	
ግንቦት 2000	148.0	160.4	131.0	128.4	115.5	127.4	134.4	150.9	114.8	139.6	109.0	113.2	106.9	May "	
ሰኔ 2000	174.7	199.4	140.7	146.2	116.0	134.1	146.4	160.4	116.1	139.6	109.1	118.7	109.2	June "	
2001														2008/2009	
ሐምሌ 2000	184.1	214.7	141.9	171.8	126.2	136.8	141.3	159.7	112.1	139.6	110.0	123.0	108.0	July 2008	
ነሐሴ 2000	185.3	214.0	145.9	171.8	128.0	139.4	147.5	165.4	112.0	139.6	111.8	122.5	112.6	August "	
መስከረም 2001	187.5	215.4	149.2	180.3	127.6	143.8	150.3	167.6	116.8	139.6	112.5	123.7	110.4	September "	
ጥቅምት 2001	181.1	201.6	152.8	182.7	128.2	147.0	155.1	170.8	115.9	147.7	114.9	124.8	110.3	October "	
ኅዳር 2001	172.3	186.0	153.4	178.0	130.8	151.6	154.8	171.3	116.4	143.8	120.3	129.0	112.6	November "	
ታህሳስ 2001	164.9	173.5	153.1	177.3	131.5	156.6	152.0	174.5	116.6	136.3	121.4	126.6	112.6	December "	
ጥር 2001	164.9	173.1	153.5	175.4	130.1	159.1	152.4	172.9	115.8	131.3	127.4	127.0	112.6	January 2009	
የካቲት 2001	166.2	174.9	154.2	178.4	136.8	164.1	148.7	179.3	122.1	128.7	129.4	129.8	117.2	February "	
መጋቢት 2001	166.5	175.4	154.2	178.8	136.1	163.8	148.4	179.4	123.6	129.4	129.3	130.7	118.3	March "	
ጊዳር 2001	170.3	180.2	156.5	179.8	140.7	166.9	149.9	188.4	124.0	129.0	130.8	132.7	117.2	April "	
ግንቦት 2001	171.1	180.2	158.6	179.3	146.1	169.4	152.4	189.4	128.7	132.6	132.5	135.4	118.3	May "	

ወንጠረኛ 12ሁ-ጠቅላላ የ ሽግግሮች ዋጋ መመዘኛ ኢንዱስትሪ ቢሥሩ የተካተቱ ክፍሎች ለሰግሊ ክልል መገንባት
 ታህሳስ 1999 = 100

Table 12a: General Consumer Price Index and Its Components for the Somali Regional State
 December 2006 = 100

ወርና ዓመት	ጠቅላላ ኢንዱስትሪ	ጠቅላላ የምግብ ኢንዱስትሪ	ጠቅላላ የምግብ ካል-ኢንዱስትሪ	Non-food Consumer Price Index Components											Month and Year
				መጠጥ	ቤሽሬና ትምባሆ	ላብሳና መጓጊያ	የቤት ቢራይቲ የቤት መሥሪያ ስቃዎች+ውሃ ነጻድናሃይል	የቤት ስቃዎች የቤት ግንባታዎች የቤት ተሳታፊዎች የቤት ሠራተኛ ደመወዝ	ሕክምና	ትራንስፖርትና ግንኙነት	መዝናኛና ትምህርት	የግል ንጽባናና የግል ተግባር ስቃዎች	ሌሎች ስቃዎች		
General Index	Food Total	Non-Food Total	Beverages	Cigarettes and Tobacco	Clothing and Footwear	House Rent, Construction Materials, Water, and Fuel and Power	Furniture, Furnishings, Household Equipment and Operation	Medical Care and Health	Transport and Communication	Recreation, Entertainment and Education	Personal Care and Effects	Miscellaneous Goods			
ታህሳስ 1999	100.0	100.0	100.0	100.0	100.0	100.0	100.0	100.0	100.0	100.0	100.0	100.0	100.0	100.0	December 2006
ሐምሌ 1999 - ሰኔ 2000	118.5	124.6	108.5	105.8	109.2	111.4	107.9	107.2	133.1	103.5	100.8	99.7	100.8	100.8	July 2007 - June 2008
2000															2007/2008
መጋቢት 2000	125.3	133.2	112.4	105.9	112.3	116.1	112.4	110.3	135.6	108.1	107.7	99.5	102.3	102.3	March "
ጊዳር 2000	127.3	136.3	112.7	105.2	109.0	117.1	112.0	113.9	137.8	109.2	105.0	101.4	100.7	100.7	April "
ግንቦት 2000	136.4	149.3	115.3	106.2	109.0	124.4	111.9	124.4	134.9	106.0	103.0	102.3	102.7	102.7	May "
ሰኔ 2000	151.5	171.1	119.4	108.7	105.9	124.8	120.4	127.8	142.1	112.9	101.6	102.3	102.7	102.7	June "
2001															2008/2009
ሐምሌ 2000	167.8	198.2	118.3	110.0	113.6	121.0	116.0	130.9	142.1	112.9	101.5	108.1	113.3	113.3	July 2008
ነሐሴ 2000	174.6	208.6	119.2	127.0	116.1	122.6	114.9	131.4	151.4	112.9	101.7	110.0	113.3	113.3	August "
መስከረም 2001	178.2	212.0	123.1	133.9	121.3	121.7	119.1	141.0	158.5	112.9	101.7	109.7	134.1	134.1	September "
ጥቅምት 2001	175.1	202.5	130.4	133.2	126.5	125.6	132.7	140.6	163.1	117.9	105.6	113.8	134.1	134.1	October "
ኅዳር 2001	170.1	193.3	132.3	133.3	123.1	127.1	136.7	141.2	163.7	117.9	108.6	116.1	134.1	134.1	November "
ታህሳስ 2001	154.8	170.6	129.1	133.2	123.1	127.3	128.3	145.0	152.4	113.7	109.3	119.3	134.1	134.1	December "
ጥር 2001	164.3	185.4	130.0	133.2	123.1	126.8	131.0	146.6	141.9	116.0	108.1	119.1	134.1	134.1	January 2009
የካቲት 2001	169.9	194.0	130.7	133.2	123.1	132.1	127.6	156.2	125.1	117.1	105.6	124.2	135.8	135.8	February "
መጋቢት 2001	169.3	191.1	133.8	142.1	123.1	135.5	131.1	162.4	123.6	117.1	107.5	123.1	135.8	135.8	March "
ጊዳር 2001	171.9	194.6	135.0	146.4	123.1	133.9	133.4	164.2	129.2	117.1	107.7	127.9	135.8	135.8	April "
ግንቦት 2001	173.5	196.3	136.2	142.9	123.1	136.5	134.0	167.2	131.4	117.1	114.9	125.2	135.8	135.8	May "

ሠንጠረዥ 13ሀ፡- ጠቅላላ የ ሽግግር ዋጋ መመዘኛ ሊንደክስ በሥሩ የተከተቱ ክፍሎች ለትግራይ ክልል መገንጠት
 ታህሳስ 1999 = 100

Table 13a: General Consumer Price Index and Its Components for the Tigray Regional State
 December 2006 = 100

ወርና ዓመት	ጠቅላላ ሊንደክስ General Index	ጠቅላላ የምግብ ሊንደክስ Food Total	ጠቅላላ የምግብ ክፍል ሊንደክስ Non-Food Total	Non-food Consumer Price Index Components											Month and Year	
				ምግብ ክፍል Beverages	ሲጃራና ትምባሆ Cigarettes and Tobacco	ላብስና መጫጫያ Clothing and Footwear	የቤት ቢራይቲ የቤት መሥሪያ ስቃዎች+ውሃ ነጻድናሃይል House Rent, Construction Materials, Water, and Fuel and Power	የቤት ስቃዎች የቤት ግብደታዎች የቤት ተሳታፊዎች የቤት ሠራተኛ ደመወዝ Furniture, Furnishings, Household Equipment and Operation	ሕክምና Medical Care and Health	ትራንስፖርትና ግንኙነት Transport and Communication	መዝናኛና ትምህርት Recreation, Entertainment and Education	የግል ጽግራ ስቃዎች Personal Care and Effects	ሌሎች ስቃዎች Miscellaneous Goods			
ታህሳስ 1999	100.0	100.0	100.0	100.0	100.0	100.0	100.0	100.0	100.0	100.0	100.0	100.0	100.0	100.0	100.0	December 2006
ሐምሌ 1999 - ሰኔ 2000	130.1	143.4	111.7	112.2	101.6	119.7	107.8	120.2	104.7	99.1	105.0	105.8	105.8	116.0	116.0	July 2007 - June 2008
2000																2007/2008
መጋቢት 2000	137.7	155.2	113.8	117.6	108.8	120.1	109.0	126.4	101.7	105.9	105.8	109.9	116.6	116.6	116.6	March "
ጊዳር 2000	139.7	156.5	116.6	121.5	106.5	128.2	108.8	129.6	104.6	105.6	107.6	114.2	118.1	118.1	118.1	April "
ግንቦት 2000	146.6	166.7	118.9	125.5	106.8	128.2	112.5	135.7	104.0	105.6	105.7	115.4	118.8	118.8	118.8	May "
ሰኔ 2000	173.0	207.2	125.9	162.2	105.4	132.1	123.4	141.9	105.9	105.6	109.9	103.5	125.5	125.5	125.5	June "
2001																2008/2009
ሐምሌ 2000	187.5	230.2	128.7	190.7	109.1	138.7	123.4	139.9	101.0	105.6	108.3	114.8	127.2	127.2	127.2	July 2008
ነሐሴ 2000	192.7	237.7	130.9	190.1	108.9	144.1	124.2	146.8	104.5	105.6	110.6	109.8	128.5	128.5	128.5	August "
መስከረም 2001	199.3	244.3	137.4	186.8	117.0	154.1	132.6	146.9	107.2	105.8	113.7	109.3	143.6	143.6	143.6	September "
ጥቅምት 2001	198.5	241.1	140.0	183.9	112.1	155.5	135.8	151.9	110.4	116.3	111.7	109.4	139.0	139.0	139.0	October "
ኅዳር 2001	187.8	223.4	138.9	179.2	109.6	160.9	130.7	150.8	100.5	112.1	114.4	115.6	140.3	140.3	140.3	November "
ታህሳስ 2001	177.8	206.8	138.0	182.8	114.2	159.9	132.1	149.0	101.2	100.9	113.8	107.6	139.3	139.3	139.3	December "
ጥር 2001	174.3	200.8	137.8	182.7	113.8	160.4	132.4	151.1	104.9	95.1	112.0	109.3	132.3	132.3	132.3	January 2009
የካቲት 2001	174.8	200.2	140.0	184.9	113.0	168.5	129.6	151.0	108.3	94.7	110.2	136.4	126.2	126.2	126.2	February "
መጋቢት 2001	176.9	203.3	140.6	189.1	111.9	169.1	129.2	151.6	107.6	95.2	111.3	138.2	132.3	132.3	132.3	March "
ጊዳር 2001	178.0	203.7	142.8	184.5	121.8	170.6	132.5	154.2	110.5	94.2	114.4	145.4	128.5	128.5	128.5	April "
ግንቦት 2001	173.1	191.6	147.7	205.7	131.4	175.7	134.8	163.2	110.4	95.5	117.4	154.3	135.9	135.9	135.9	May "

ወጠረኛ 1ሐ፡፡ ጠቅላላ የምግብ ክፍሎች የሽግግር ዋጋ መመዘኛ ኢንዱስትሪ በአገር አቀፍ ደረጃ
 ታህሳስ 1999 = 100

Table 1b: Consumer Price Index of Total Food and Its Components at Country Level
 December 2006 = 100

ወርና ዓመት	ጠቅላላ የምግብ	አህል	በቤት ውስጥ የተወሰዱ የምግብ ዓይነቶች			FOOD TAKEN AT HOME								ከቤት ውጪ የተወሰዱ የምግቦች	Month and Year	
			ጥሬ ጥሬ	ዳቦና ሌሎች የተዘጋጁ የምግቦች	ሥጋ	ወተት፣ ዓይብና እንቁላል	በይጥና ትብቶች	እትክልትና ፍሬ-ፍሬ	ትመግ ትመጥ	ደንችና ሌሎች ሥራ ሥራዎች	ያልተቆላ ቤናና ሻይ ቅጠል	ሌሎች የምግቦች	የግንባራ ለንገሎች			
ታህሳስ 1999	100.0	100.0	100.0	100.0	100.0	100.0	100.0	100.0	100.0	100.0	100.0	100.0	100.0	100.0	100.0	December 2006
ሐምሌ 1999 - ሰኔ 2000	137.2	137.2	124.1	137.6	120.0	117.7	152.6	142.0	325.9	125.7	124.5	104.7	113.9	118.7	118.7	July 2007 - June 2008
2000																2007/2008
መግቢት 2000	146.9	146.9	129.6	147.2	124.6	126.6	168.3	173.3	327.7	141.8	131.1	116.4	117.2	123.2	123.2	March "
ጊያዝያ 2000	149.8	151.3	131.6	148.8	126.1	129.3	172.3	172.3	333.0	145.0	132.4	111.8	118.3	125.3	125.3	April "
ግንቦት 2000	166.3	182.4	139.7	160.5	133.6	135.6	184.8	173.1	353.5	151.4	137.1	118.5	121.7	128.4	128.4	May "
ሰኔ 2000	195.2	238.1	160.5	195.0	141.2	143.2	184.2	148.8	395.3	178.0	141.3	127.3	122.6	135.9	135.9	June "
2001																2008/2009
ሐምሌ 2000	216.6	285.9	172.7	211.8	144.0	145.2	181.6	140.0	415.8	178.0	139.1	137.5	126.1	140.1	140.1	July 2008
ክሐሴ 2000	218.5	287.5	173.3	223.2	145.4	148.6	176.5	153.1	412.8	177.6	138.7	147.1	125.8	142.8	142.8	August "
መስከረም 2001	220.6	290.2	175.9	225.0	151.3	155.4	181.1	156.8	390.9	178.4	141.2	149.6	127.4	146.6	146.6	September "
ጥቅምት 2001	214.3	277.6	176.8	231.2	150.4	157.5	178.1	150.5	351.9	177.0	141.9	147.3	128.6	148.0	148.0	October "
ኅዳር 2001	202.2	252.1	173.9	234.2	148.1	156.0	172.2	145.8	314.4	175.6	141.3	154.3	127.9	148.3	148.3	November "
ታህሳስ 2001	184.3	214.3	162.9	225.0	146.6	150.6	166.2	147.0	275.7	175.7	138.6	158.4	126.3	149.9	149.9	December "
ጥር 2001	185.3	215.2	162.7	224.1	147.3	157.5	164.4	158.5	232.1	186.7	140.4	171.7	125.6	152.8	152.8	January 2009
የኮቲት 2001	186.1	212.8	167.5	228.3	147.8	164.0	162.8	172.3	202.2	198.0	144.6	178.7	129.0	153.5	153.5	February "
መግቢት 2001	185.9	210.3	164.8	226.1	148.8	161.5	163.5	188.8	183.0	203.5	147.6	179.7	130.3	156.5	156.5	March "
ጊያዝያ 2001	187.8	211.8	168.5	220.9	157.5	167.2	167.6	194.3	173.1	206.7	149.2	181.8	133.2	157.0	157.0	April "
ግንቦት 2001	185.6	207.4	171.2	227.7	153.4	172.7	166.4	203.1	159.6	196.3	147.1	185.5	135.7	157.6	157.6	May "

ሠገጠረዥ 2ላ፡- የምግብ ዋጋ መመዘኛ ለገጠና ግብዓት በአገር አቀፍ እና በክልሎች ደረጃ
 ታህሳስ 1999 = 100

Table 2b: Summary of Consumer Price Indices of Food at Country and Regional Levels
 December 2006=100

ወርና ዓመት	Reporting Level											Month and Year	
	Eth.	A.A.	Afar	Amhara	B.Gumuz	D.Dawa	Gambela	Harari	Oromia	SNNP	Somalia		Tigray
ታህሳስ 1999	100.0	100.0	100.0	100.0	100.0	100.0	100.0	100.0	100.0	100.0	100.0	100.0	December 2006
ሐምሌ 1999 - ሰኔ 2000	137.2	134.8	136.1	139.6	148.2	135.4	133.8	130.4	138.7	131.1	124.6	143.4	July 2007 - June 2008
2000													2007/2008
መጋቢት 2000	146.9	142.6	137.9	142.5	161.2	146.2	134.4	134.9	151.5	142.8	133.2	155.2	March "
ግብርንታረኛ 2000	149.8	143.2	139.4	145.0	160.0	148.5	131.4	139.9	154.4	148.0	136.3	156.5	April "
ጥቅምት 2000	166.3	163.5	161.9	164.3	167.9	161.8	151.6	169.0	173.3	160.4	149.3	166.7	May "
ሰኔ 2000	195.2	183.9	178.4	190.4	206.4	180.5	189.6	191.2	201.0	199.4	171.1	207.2	June "
2001													2008/2009
ሐምሌ 2000	216.6	195.2	198.7	216.5	246.8	192.8	248.8	201.0	223.8	214.7	198.2	230.2	July 2008
ኦገስት 2000	218.5	197.5	200.6	218.0	262.9	204.3	276.8	214.3	224.8	214.0	208.6	237.7	August "
መስከረም 2001	220.6	198.8	201.0	221.4	272.8	204.4	269.0	213.9	226.0	215.4	212.0	244.3	September "
ጥቅምት 2001	214.3	196.8	200.0	220.9	246.6	205.4	271.2	213.9	217.9	201.6	202.5	241.1	October "
ኅዳር 2001	202.2	194.8	192.5	212.2	237.8	200.7	224.5	207.3	204.1	186.0	193.3	223.4	November "
ታህሳስ 2001	184.3	184.8	180.2	190.7	215.0	197.8	200.8	198.7	183.9	173.5	170.6	206.8	December "
ጥር 2001	185.3	181.9	180.1	187.8	199.4	195.8	198.9	195.9	188.9	173.1	185.4	200.8	January 2009
ፀደቅት 2000	186.1	183.4	182.1	185.9	202.2	198.5	198.5	202.8	190.0	174.9	194.0	200.2	February "
መጋቢት 2001	185.9	186.0	181.5	184.0	206.8	199.5	197.6	201.9	189.3	175.4	191.1	203.3	March "
ግብርንታረኛ 2001	187.8	189.4	185.0	184.5	206.1	198.5	201.9	202.3	191.1	180.2	194.6	203.7	April "
ጥቅምት 2001	185.6	191.0	185.3	180.8	205.1	198.4	212.6	202.6	189.4	180.2	196.3	191.6	May "

ሠንጠረዥ 3 ለ:- ጠቅላላ የሽንጃቸ ጥጋ መመዘኛ ሊያደክስና በሥሩ የተካተቱ ክፍሎች ለአዲስ አበባ ከተማ መስተዳደር
 ታህሳስ 1999 = 100

Table 3b: Consumer Price Index of Total Food and Its Components for Addis Ababa City Administration
 December 2006 = 100

ወርና ዓመት	ጠቅላላ የጥጋ	እህል	በቤት ውስጥ የተወለዱ የጥጋብ ዓይነቶች			FOOD TAKEN AT HOME							ከቤት ውጪ የተወለዱ የጥጋቦች	Month and Year		
			ጥራጥራ	ዳቦና ሌሎች የተዘጋጁ የጥጋቦች	ሥጋ	ወተት+ ዓይብና እንቁላል	ዘይትና ቅባቶች	እትክልትና ፍራፍሬ	ቅመግ ቅመጦች	ደግኞች ሌሎች ሥራ-ሥሮች	ያልተቆላ ቡናና ሻይ ቅጠል	ሌሎች የጥጋቦች			የግብረ-ጫ አገልግሎት	
ታህሳስ 1999	100.0	100.0	100.0	100.0	100.0	100.0	100.0	100.0	100.0	100.0	100.0	100.0	100.0	100.0	100.0	December 2006
ሐምሌ 1999 - ሰኔ 2000	134.8	122.2	134.5	134.6	118.9	129.4	145.3	134.2	320.3	206.6	128.5	105.9	119.7	120.6	120.6	July 2007 - June 2008
2000																2007/2008
መገቢት 2000	142.6	129.7	143.7	143.1	122.3	131.0	161.8	107.3	307.9	303.0	137.2	116.1	118.6	122.3	122.3	March "
ጊዳር 2000	143.2	130.3	144.6	143.3	123.7	133.5	161.5	103.2	325.4	292.5	139.3	106.7	119.6	124.7	124.7	April "
ግንቦት 2000	163.5	150.8	163.9	185.8	133.8	143.6	187.5	101.6	353.8	343.9	140.5	115.5	136.4	143.1	143.1	May "
ሰኔ 2000	183.9	200.4	189.0	201.5	142.1	158.4	183.0	120.9	379.4	331.8	140.9	124.1	138.8	141.5	141.5	June "
2001																2008/2009
ሐምሌ 2000	195.2	213.4	197.9	215.3	152.4	168.1	175.9	161.4	394.8	324.2	141.3	136.4	139.6	146.8	146.8	July 2008
ነሐሴ 2000	197.5	220.4	201.6	212.7	147.2	167.8	170.9	207.6	388.0	233.7	138.1	144.3	141.3	147.4	147.4	August "
መስከረም 2001	198.8	226.6	204.3	212.8	159.7	181.9	172.2	195.5	347.8	242.9	139.5	143.7	138.5	149.1	149.1	September "
ጥቅምት 2001	196.8	231.8	205.1	218.3	157.6	183.1	170.9	160.7	313.4	251.6	140.5	134.5	141.1	154.0	154.0	October "
ኅዳር 2001	194.8	233.4	200.6	217.3	156.0	181.4	163.5	153.3	277.4	313.2	136.0	137.2	139.2	154.8	154.8	November "
ታህሳስ 2001	184.8	204.8	191.1	214.2	150.0	179.7	161.5	154.5	271.6	263.7	133.9	149.0	137.2	153.7	153.7	December "
ጥር 2001	181.9	202.0	188.8	214.3	148.9	182.6	159.5	156.8	209.5	264.9	134.1	168.4	137.0	154.3	154.3	January 2009
የካቲት 2001	183.4	203.8	179.9	216.8	150.2	180.7	155.7	167.3	195.5	312.4	136.5	172.4	139.0	157.0	157.0	February "
መገቢት 2001	186.0	204.0	188.4	221.0	150.7	184.4	156.3	190.7	175.5	328.0	137.3	176.2	141.2	157.5	157.5	March "
ጊዳር 2001	189.4	206.3	187.5	225.4	154.7	182.3	168.1	211.3	157.4	321.8	135.1	180.1	142.1	161.3	161.3	April "
ግንቦት 2001	191.0	207.5	186.0	217.3	157.5	191.8	169.4	229.5	149.1	318.0	138.0	187.7	140.1	169.0	169.0	May "

ወንጠረኝ 44፡- ጠቅላላ ምግብና የምግብ ክፍሎች የ ሽግግር ዋጋ መመዘኛ ሊገደክስ ለአፋር ክልል መገንጠያ
 ታህሳስ 1999 = 100

Table 4b: Consumer Price index of Total Food and Its Components for the Afar Regional State

December 2006 = 100

ወርና ዓመት	ጠቅላላ ምግብ	አሁል	በቤት ውስጥ የተወሰኑ የምግብ ዓይነቶች			FOOD TAKEN AT HOME							ክፍት ወጪ የተወሰኑ ምግቦች	Month and Year		
			ጥራጥራ	ቆይና ሌሎች የተዘጋጁ ምግቦች	ሥጋ	ወተት+ ዓይብና እንቁላል	ዘይትና ቅባቶች	እትክልትና ፍራፍራ	ቅመግ ቅመም	ደገችና ሌሎች ሥራሥርቶች	ያልተቆላ ቡናና ሻይ ቅጠል	ሌሎች ምግቦች			የግንባራ ለገልገሎት	
ታህሳስ 1999	100.0	100.0	100.0	100.0	100.0	100.0	100.0	100.0	100.0	100.0	100.0	100.0	100.0	100.0	100.0	December 2006
ሐምሌ 1999 - ሰኔ 2000	136.1	124.6	147.1	127.1	140.1	139.8	151.6	138.8	341.4	151.8	105.8	94.9	101.8	121.1	July 2007 - June 2008	
2000															2007/2008	
መገቢት 2000	137.9	126.2	157.8	131.1	142.4	133.0	166.6	155.5	322.9	192.7	106.9	99.8	103.0	123.1	March "	
ግድረታ 2000	139.4	131.3	163.4	137.3	145.0	133.3	162.3	111.6	333.8	184.0	111.1	104.6	103.0	124.5	April "	
ግንቦት 2000	161.9	155.8	172.7	175.1	163.2	175.2	182.0	120.1	359.7	228.3	116.1	102.9	106.5	136.6	May "	
ሰኔ 2000	178.4	185.6	206.9	206.7	163.7	175.3	191.8	116.2	392.7	228.3	121.6	107.0	108.1	156.5	June "	
2001															2008/2009	
ሐምሌ 2000	198.7	222.3	218.7	219.2	170.1	196.4	188.7	154.7	452.6	242.5	130.2	109.2	113.1	162.1	July 2008	
ክሌሌ 2000	200.6	235.8	224.3	223.0	175.8	178.1	184.3	196.4	389.1	242.5	138.3	118.2	116.5	165.4	August "	
መስከረም 2001	201.0	237.1	229.5	224.7	177.4	176.4	174.0	194.0	389.7	225.1	140.2	122.9	128.2	167.8	September "	
ጥቅምት 2001	200.0	240.0	233.0	229.0	172.7	176.6	172.8	182.7	336.9	228.3	140.1	124.9	122.6	170.0	October "	
ጥር 2001	192.5	219.7	230.5	223.4	168.4	177.5	171.7	171.9	319.0	232.9	140.8	124.3	120.4	167.9	November "	
ታህሳስ 2001	180.2	193.5	194.0	215.7	157.5	176.5	170.0	160.5	282.7	223.7	137.0	123.1	120.4	171.1	December "	
ጥር 2001	180.1	190.1	197.1	212.8	166.8	182.7	169.4	159.7	246.1	223.3	138.8	135.6	120.4	168.9	January 2009	
የካቲት 2001	182.1	190.1	190.2	230.5	165.7	186.4	174.2	173.6	210.8	228.3	137.4	149.9	119.1	172.1	February "	
መገቢት 2001	181.5	188.1	188.4	241.6	167.9	177.0	175.9	195.4	203.9	232.4	136.9	149.3	119.1	173.1	March "	
ግድረታ 2001	185.0	186.4	188.6	243.0	210.1	177.9	173.5	202.3	169.3	241.6	156.4	163.6	119.1	174.7	April "	
ግንቦት 2001	185.3	186.6	185.7	244.5	203.2	177.7	167.6	262.3	155.3	246.1	154.4	161.2	119.1	171.4	May "	

ወንጠራዥ ሀገር፡፡ ጠቅላላ የምግብ ወጪዎች የሽያጭ ዋጋ መመዘኛ ኢንዱስትሪ ለላግራ ክልል የምግብ ወጪ
 ታህሳስ 1999 = 100

Table 5b: Consumer Price Index of Total Food and Its Components for the Amhara Regional State
 December 2006 = 100

ወርና ዓመት	ጠቅላላ የምግብ	አህል	በቤት ውስጥ የተወሰኑ የምግብ ዓይነቶች			FOOD TAKEN AT HOME					ክፍያው የተወሰኑ የምግብ	ወር እና ዓመት			
			ጥሬ ጥሬ	ቆይታ ለሌሎች የተዘጋጁ የምግብ	ሥጋ	ወተትና ዓይብና እንቁላል	ዘይትና ቅባቶች	እትክልትና ፍሬፍሬ	ቅመም	ደገገና ሌሎች ሥፍራዎች			ያልተቆላ ቤናና ሻይ ቅጠል	ሌሎች የምግብ	የግንባራ አገልግሎት
ታህሳስ 1999	100.0	100.0	100.0	100.0	100.0	100.0	100.0	100.0	100.0	100.0	100.0	100.0	100.0	100.0	December 2006
ሐምሌ 1999 - ሰኔ 2000	139.6	137.6	117.9	131.0	117.8	125.6	161.8	129.4	297.0	122.1	125.2	105.8	106.7	121.4	July 2007 - June 2008
2000															2007/2008
መገቢት 2000	142.5	139.2	122.4	137.1	124.8	129.3	172.6	131.0	280.0	140.8	137.2	114.8	104.7	127.2	March "
ጁሉሉ 2000	145.0	142.8	123.3	140.0	124.6	131.3	182.0	125.7	285.3	139.7	136.9	115.3	106.7	128.9	April "
ግንቦት 2000	164.3	173.8	129.6	154.4	128.1	136.8	191.7	116.4	328.0	170.7	138.6	123.9	108.0	132.0	May "
ሰኔ 2000	190.4	216.1	148.5	179.8	129.5	148.7	197.4	115.5	368.1	178.3	137.3	131.8	108.8	140.0	June "
2001															2008/2009
ሐምሌ 2000	216.5	262.0	165.8	201.9	131.4	158.7	188.8	133.2	386.8	180.5	135.7	151.4	112.4	145.5	July 2008
ክሌሌ 2000	218.0	261.0	172.1	207.9	132.9	178.0	191.9	158.4	376.3	185.6	137.4	155.6	111.8	149.0	August "
መስከረም 2001	221.4	269.1	172.3	210.3	141.8	174.5	189.8	154.6	346.5	184.5	137.2	157.2	115.9	157.1	September "
ጥቅምት 2001	220.9	271.0	172.9	218.1	142.2	173.6	189.7	135.7	323.6	176.4	142.8	161.0	124.9	156.3	October "
ጥር 2001	212.2	255.6	171.3	217.9	140.8	174.3	185.5	134.2	297.1	174.1	142.3	175.2	123.5	158.0	November "
ታህሳስ 2001	190.7	216.9	162.4	213.5	141.0	173.2	178.2	134.8	256.5	169.9	139.8	179.7	123.4	159.7	December "
ጥር 2001	187.8	215.2	160.5	214.6	142.5	175.0	178.6	138.2	214.2	165.8	140.7	196.2	120.0	161.1	January 2009
የካቲት 2001	185.9	210.1	161.7	219.4	144.1	183.7	179.6	167.7	184.2	207.5	140.0	203.5	121.6	160.8	February "
መገቢት 2001	184.0	208.7	153.0	220.8	148.4	184.9	177.9	179.6	164.3	208.0	139.7	203.1	124.0	164.2	March "
ጁሉሉ 2001	184.5	208.4	155.9	219.0	167.9	187.1	180.9	184.1	148.1	208.0	140.7	204.9	122.6	162.9	April "
ግንቦት 2001	180.8	201.3	156.8	222.0	149.1	188.5	183.5	202.7	144.3	208.6	140.1	206.0	125.2	163.8	May "

ወንጠረኛ ርዕስ፡- ጠቅላላ የምግብ ድርጅት የገንዘብ ክፍሎች የ ሽንገሎች የጋ ጠመዳዎች ሊንደክስ ለቤኒሻንጉል ንድፍ ክልላዊ ጠገን ጋራ
 ታህሳስ 1999 = 100

Table 6b: Consumer Price Index of Total Food and Its Components for the Benishangul Gumuz Regional state
 December 2006 = 100

ወርና ዓመት	ጠቅላላ የምግብ	እህል	በቤት ውስጥ የተወለዱ የምግብ ዓይነቶች			FOOD TAKEN AT HOME									ከቤት ውጭ የተወለዱ የምግብ	Month and Year
			ጥራጥራ	ዳቦና ሌሎች የተዘጋጁ የምግብ	ሥጋ	ወተት+ ዓይብና እንቁሳል	ዘይትና ቅባቶች	እትክልትና ፍራፍሬ	ትመግ ቅመም	ደንችና ሌሎች ሥራሥርጎች	ያልተቆላ ቤናና ዝይ ቅጠል	ሌሎች የምግብ	የግብረጫ አገልግሎት			
ታህሳስ 1999	100.0	100.0	100.0	100.0	100.0	100.0	100.0	100.0	100.0	100.0	100.0	100.0	100.0	100.0	100.0	December 2006
ሐምሌ 1999 - ሰኔ 2000	148.2	160.9	112.5	129.7	131.1	108.5	142.4	116.6	366.2	127.0	128.5	105.1	111.1	117.8	117.8	July 2007 - June 2008
2000																2007/2008
ጠገቢት 2000	161.2	177.9	113.0	140.4	131.4	109.9	153.1	124.4	437.3	135.0	132.1	112.6	116.3	123.7	123.7	March "
ጊዳር 2000	160.0	178.2	116.3	141.7	136.6	109.4	155.0	125.6	386.5	130.1	134.2	108.3	109.2	124.8	124.8	April "
ግንቦት 2000	167.9	190.8	119.0	148.7	143.6	115.5	167.6	124.9	385.4	130.9	139.6	109.9	109.2	130.8	130.8	May "
ሰኔ 2000	206.4	272.2	116.0	168.3	155.1	125.0	171.7	116.8	392.1	161.4	134.4	125.6	115.3	139.5	139.5	June "
2001																2008/2009
ሐምሌ 2000	246.8	344.0	156.3	185.0	167.2	142.6	171.8	111.4	478.5	179.0	142.2	140.9	126.9	143.3	143.3	July 2008
ኤሌ 2000	262.9	375.6	173.4	201.0	169.3	149.6	168.1	130.3	457.4	213.5	138.9	142.8	127.1	143.8	143.8	August "
መስከረም 2001	272.8	392.5	177.9	208.8	179.3	150.7	171.2	136.1	461.2	229.9	144.1	148.7	131.7	143.4	143.4	September "
ጥቅምት 2001	246.6	341.4	158.8	219.1	181.7	153.2	169.2	135.4	401.7	214.3	139.9	146.7	135.9	142.3	142.3	October "
ኅዳር 2001	237.8	326.7	142.5	224.1	175.0	155.6	171.5	132.2	381.3	209.1	136.7	155.0	129.4	143.1	143.1	November "
ታህሳስ 2001	215.0	272.5	141.8	234.8	173.3	159.2	192.5	174.0	289.2	205.6	130.8	169.8	122.2	152.2	152.2	December "
ጥር 2001	199.4	243.7	144.2	231.2	170.7	159.9	172.4	152.7	284.7	213.9	122.9	175.5	113.5	151.6	151.6	January 2009
የካቲት 2001	202.2	247.4	148.8	231.3	171.1	163.4	170.9	156.0	288.0	212.1	125.5	178.6	114.8	154.1	154.1	February "
ጠገቢት 2001	206.8	255.9	140.1	234.5	172.2	165.9	167.8	166.7	289.6	174.8	130.7	180.3	124.6	158.6	158.6	March "
ጊዳር 2001	206.1	253.8	168.9	244.5	168.6	164.7	190.0	161.6	239.9	167.3	129.6	186.4	130.2	155.8	155.8	April "
ግንቦት 2001	205.1	254.0	170.2	242.8	168.4	164.6	193.2	160.5	196.6	172.7	132.9	183.4	126.0	159.5	159.5	May "

ወንጠረዥ 7ሐ፡፡ ጠቅላላ የምግብና የምግብ ክፍሎች የ ሽግግር ዋጋ መመዘኛ ሊያደገስ ለደረጃዎ ለጠቅላላ ካውንሰል ታህሳስ 1999 = 100

Table 7b: Consumer Price Index of Total Food and Its Coponents for the Dire Dawa Adminstrative Council December 2006 = 100

ወርና ዓመት	ጠቅላላ ምግብ	እህል	በቤት ውስጥ የተወሰዱ የምግብ ዓይነቶች					FOOD TAKEN AT HOME							ከቤት ውጭ የተወሰዱ ምግቦች	Month and Year
			ጥራጥረ	ዳቦና ሌሎች የተዘጋጁ ምግቦች	ሥጋ	ወተት+ ዓይብና እንቁሳል	ዘይትና ቅባቶች	እትክልትና ፍራፍሬ	ትመግ ቅመም	ደገኞች ሌሎች ሥራ-ሥርዓት	ያልተቆላ ቤናና ሻይ ቅጠል	ሌሎች ምግቦች	የግብረ-ጫ አገልግሎት			
ታህሳስ 1999	100.0	100.0	100.0	100.0	100.0	100.0	100.0	100.0	100.0	100.0	100.0	100.0	100.0	100.0	100.0	December 2006
ሐምሌ 1999 - ሰኔ 2000	135.4	140.9	148.3	127.9	107.8	118.5	151.7	132.9	353.5	167.6	133.9	95.4	90.7	114.7	July 2007 - June 2008	
2001															2007/2008	
መገቢት 2000	146.2	147.2	146.5	144.2	106.7	122.0	165.5	139.7	337.2	243.0	149.2	102.9	86.6	141.2	March "	
ጊዮርጊያ 2000	148.5	155.3	152.9	141.5	106.4	135.0	169.6	123.0	381.2	221.9	147.9	106.8	86.6	143.2	April "	
ግንቦት 2000	161.8	183.7	175.3	158.9	125.9	152.8	185.7	118.1	413.2	322.0	137.2	106.8	86.6	134.1	May "	
ሰኔ 2000	180.5	225.5	193.4	185.1	126.0	154.3	190.3	140.7	428.4	281.7	140.0	107.1	92.6	136.1	June "	
2000															2008/2009	
ሐምሌ 2000	192.8	240.9	200.4	191.3	130.5	157.7	197.1	165.6	453.3	278.2	150.5	110.4	95.9	167.1	July 2008	
ኤሌ 2000	204.3	262.0	209.4	205.7	127.9	164.0	194.2	171.8	431.3	201.0	150.2	112.2	95.9	217.1	August "	
መስከረም 2001	204.4	262.4	210.2	232.1	127.8	163.3	186.2	176.2	409.0	198.8	151.1	112.5	95.9	171.2	September "	
ጥቅምት 2001	205.4	265.4	209.4	240.2	127.8	172.2	185.4	171.7	352.0	200.4	152.8	112.1	95.3	169.9	October "	
ኅዳር 2001	200.7	244.8	208.9	242.3	131.1	178.7	180.7	157.1	325.4	205.3	163.3	112.5	95.3	170.0	November "	
ታህሳስ 2001	197.8	233.8	199.6	246.0	128.4	176.5	176.7	153.3	341.9	208.8	173.2	114.0	95.3	154.7	December "	
ጥር 2001	195.8	228.0	187.5	243.9	130.9	176.6	177.5	181.4	271.3	236.2	168.9	114.5	95.3	161.1	January 2009	
የካቲት 2001	198.5	229.4	186.1	248.7	131.4	176.6	177.5	185.0	271.3	254.1	168.3	114.5	95.3	174.1	February "	
መገቢት 2001	199.5	228.8	191.0	252.3	124.3	187.7	187.2	194.4	217.5	245.2	170.7	115.3	95.3	174.2	March "	
ጊዮርጊያ 2001	198.5	229.6	190.9	243.5	129.0	190.3	183.4	191.2	179.6	227.6	172.8	116.0	95.3	188.5	April "	
ግንቦት 2001	198.4	228.8	191.7	247.4	132.4	189.3	178.7	220.1	164.5	205.0	164.7	116.0	95.3	186.9	May "	

ወንጠራዥ ያለ፡- ጠቅላላ የምግብ የክፍሎች የሽግግር ስርዓት ለጊዜያዊ ለጋምቤላ ሕዝቦች ክልላዊ መንግሥት
 ታህሳስ 1999 = 100

Table 8b: Consumer Price Index of Total Food and Its Components for the Gambela Peoples Regional State
 December 2006 = 100

ወርና ዓመት	ጠቅላላ ምግብ	እህል	በቤት ውስጥ የተወሰዱ የምግብ ዓይነቶች					FOOD TAKEN AT HOME						ከቤት ውጭ የተወሰዱ ምግቦች	Month and Year	
			ጥራጥራ	ዳቦና ሌሎች የተዘጋጁ ምግቦች	ሥጋ	ወተት፣ ዓይብና እንቁሳል	ዘይትና ቅባቶች	እትክልትና ፍራፍሬ	ትመግ ቅመም	ደንችና ሌሎች ሥራ-ሥርዓቶች	ያልተቆላ ቡናና ዝይ ቅጠል	ሌሎች ምግቦች	የግብረ-ጊዜ አገልግሎት			
ታህሳስ 1999	100.0	100.0	100.0	100.0	100.0	100.0	100.0	100.0	100.0	100.0	100.0	100.0	100.0	100.0	100.0	December 2006
ሐምሌ 1999 - ሰኔ 2000	133.8	124.8	141.2	167.1	131.8	131.5	150.1	138.5	411.3	142.3	124.0	112.4	110.4	133.2	July 2007 - June 2008	
2001															2007/2008	
መጋቢት 2000	134.4	121.9	134.8	138.4	131.0	128.4	163.5	137.1	425.8	193.7	132.5	123.4	115.5	132.7	March "	
ጊደር 2000	131.4	118.7	133.5	141.3	131.4	127.5	161.6	138.5	425.8	158.1	135.1	116.3	115.5	128.9	April "	
ግንቦት 2000	151.6	135.3	188.5	317.5	142.3	128.4	167.8	162.0	425.8	167.6	131.1	133.2	115.5	140.3	May "	
ሰኔ 2000	189.6	199.0	240.0	328.4	145.4	128.1	170.4	176.5	433.9	202.4	133.6	144.9	115.5	161.8	June "	
2000															2008/2009	
ሐምሌ 2000	248.8	314.2	274.3	339.8	142.7	140.9	171.0	185.4	433.9	219.8	134.2	157.7	115.5	166.8	July 2008	
ኤሌ 2000	276.8	370.9	275.9	343.3	143.1	148.2	169.9	185.4	433.9	237.2	135.4	156.8	115.5	166.8	August "	
መስከረም 2001	269.0	338.2	309.0	373.0	144.2	170.3	167.3	228.0	433.9	237.2	132.3	155.6	129.1	166.8	September "	
ጥቅምት 2001	271.2	338.0	308.1	366.5	145.2	179.6	166.3	244.8	433.9	237.2	133.5	165.9	129.1	167.8	October "	
ኅዳር 2001	224.5	233.8	319.8	366.7	163.0	209.0	170.0	235.2	433.9	237.2	133.7	166.4	129.1	166.8	November "	
ታህሳስ 2001	200.8	196.0	281.7	371.3	159.6	268.0	166.5	227.1	304.1	213.0	123.4	157.7	129.1	166.8	December "	
ጥር 2001	198.9	198.0	281.2	361.4	158.8	226.4	169.8	217.8	219.0	212.3	123.8	165.3	132.2	166.8	January 2009	
የኮቲት 2001	198.5	196.7	281.3	354.0	159.9	212.5	170.1	222.2	219.0	219.8	110.3	172.1	132.2	166.8	February "	
መጋቢት 2001	197.6	195.1	285.0	359.2	159.4	207.1	168.2	222.3	219.0	211.9	112.4	171.5	134.4	167.1	March "	
ጊደር 2001	201.9	206.7	297.3	357.3	154.0	208.8	166.7	218.2	192.6	214.6	105.4	164.4	136.5	167.1	April "	
ግንቦት 2001	212.6	221.0	307.7	361.7	154.8	219.6	155.7	245.7	221.2	196.4	113.7	173.7	122.3	166.8	May "	

ሠንጠረዥ 9ሀ፡- ጠቅላላ የምግብ ወጪ የግንዛቤ ስርዓት የግንዛቤ ስርዓት የግንዛቤ ስርዓት የግንዛቤ ስርዓት የግንዛቤ ስርዓት
 ታህሳስ 1999 = 100

Table 9b: Consumer Price Index of Total Food and Its Components for the Harari People Regional State
 December 2006 = 100

ወር ዓመት	ጠቅላላ ምግብ	እህል	በቤት ውስጥ የተወሰዱ የምግብ ዓይነቶች					FOOD TAKEN AT HOME						ከቤት ውጭ የተወሰዱ ምግቦች	Month and Year	
			ጥራጥራ	ዳቦና ሌሎች የተዘጋጁ ምግቦች	ሥጋ	ወተት+ ዓይብና እንቁላል	ዘይትና ቅባቶች	እትክልትና ፍራፍሬ	ትመግ ትመግ	ደንችና ሌሎች ሥራሥርቶች	ያልተቆላ ቡናና ዝይ ቅጠል	ሌሎች ምግቦች	የግንዛቤ አገልግሎት			
ታህሳስ 1999	100.0	100.0	100.0	100.0	100.0	100.0	100.0	100.0	100.0	100.0	100.0	100.0	100.0	100.0	100.0	December 2006
ሐምሌ 1999 - ሰኔ 2000	130.4	128.3	129.6	124.0	112.4	120.7	160.5	154.9	312.5	182.1	119.6	101.4	101.9	123.1	2007/2008	July 2007 - June 2008
2001															2007/2008	
መገቢት 2000	134.9	130.5	133.1	139.2	111.9	122.7	179.0	137.2	314.5	277.8	115.7	110.4	100.0	132.6	March "	
ጊዳር 2000	139.9	136.1	137.1	144.7	116.9	124.7	181.3	112.2	338.9	222.2	133.9	111.2	100.0	134.6	April "	
ግንቦት 2000	169.0	169.3	144.3	162.8	123.7	144.8	194.6	120.9	362.8	222.2	204.1	107.9	107.7	142.7	May "	
ሰኔ 2000	191.2	198.7	162.4	211.0	136.6	153.4	201.9	124.3	369.8	277.8	221.9	113.5	115.5	151.6	June "	
2000															2008/2009	
ሐምሌ 2000	201.0	232.6	156.0	239.9	140.0	170.4	201.5	147.8	408.5	318.9	179.6	114.9	115.5	164.0	July 2008	
ኤሌሌ 2000	214.3	246.6	167.1	240.2	148.4	179.7	208.0	180.0	404.2	232.2	214.3	117.3	115.5	171.9	August "	
መስከረም 2001	213.9	248.3	168.7	247.9	143.5	170.6	204.1	158.6	380.6	232.2	217.2	117.3	115.5	172.1	September "	
ጥቅምት 2001	213.9	245.3	170.4	256.1	150.7	173.8	196.0	153.8	339.3	232.2	220.1	117.3	115.5	176.0	October "	
ኅዳር 2001	207.3	234.4	163.7	252.1	138.9	171.7	189.0	155.7	326.5	232.2	210.9	121.4	115.5	180.1	November "	
ታህሳስ 2001	198.7	225.3	161.3	249.3	141.1	130.3	186.0	162.1	305.5	217.2	190.6	121.9	133.3	184.1	December "	
ጥር 2001	195.9	217.1	160.8	250.5	136.5	130.6	186.7	165.8	274.4	231.7	190.3	122.2	133.3	184.4	January 2009	
የካቲት 2001	202.8	217.1	165.2	248.9	135.4	131.3	192.6	169.1	245.7	231.7	229.8	122.2	133.3	177.8	February "	
መገቢት 2001	201.9	217.4	161.1	243.9	139.0	137.5	191.6	165.8	216.7	231.1	229.7	122.2	133.3	178.0	March "	
ጊዳር 2001	202.3	218.7	165.3	240.0	132.2	150.8	184.8	184.7	191.5	222.2	230.7	122.2	133.3	178.1	April "	
ግንቦት 2001	202.6	213.3	169.5	240.1	140.2	154.3	178.5	205.7	178.0	175.6	238.2	123.8	133.3	178.7	May "	

ወንጠረዥ 10ላ፡- ጠቅላላ የምግብ ወጪዎች የግንዛቤ ስርዓት የግንዛቤ ስርዓት የግንዛቤ ስርዓት የግንዛቤ ስርዓት
 ታህሳስ 1999 = 100

Table 10b: Consumer Price Index of Total Food and Its Components for the Oromiya Regional State
 December 2006 = 100

ወርያ ዓመት	ጠቅላላ ምግብ	እህል	በቤት ውስጥ የተወሰዱ የምግብ ዓይነቶች			FOOD TAKEN AT HOME									ከቤት ውጭ የተወሰዱ ምግቦች	Month and Year
			ጥራጥራ	ዳቦና ሌሎች የተዘጋጁ ምግቦች	ሥጋ	ወተት+ ዓይብና እንቁላል	ዘይትና ቅባቶች	እትክልትና ፍራፍራ	ቅመግ ቅመጥ	ደንችና ሌሎች ሥራሥርቶች	ያልተቆላ ቤናና ሻይ ቅጠል	ሌሎች ምግቦች	የግንዛቤ አገልግሎት			
ታህሳስ 1999	100.0	100.0	100.0	100.0	100.0	100.0	100.0	100.0	100.0	100.0	100.0	100.0	100.0	100.0	100.0	December 2006
ሐምሌ 1999 - ሰኔ 2000	138.7	137.3	127.0	147.9	119.9	116.4	151.9	147.1	379.6	134.7	121.9	102.5	118.2	122.6	122.6	July 2007 - June 2008
2001																2007/2008
ጠገባት 2000	151.5	150.3	134.5	163.3	124.9	128.0	164.8	189.4	402.9	154.4	125.8	115.4	123.0	127.9	127.9	March "
ጊዳር 2000	154.4	154.4	137.3	165.3	126.3	130.6	169.2	189.5	406.4	159.6	126.6	107.0	124.0	130.1	130.1	April "
ግንቦት 2000	173.3	190.7	147.0	173.7	136.7	136.2	182.9	194.3	407.9	163.6	131.9	115.1	128.7	133.1	133.1	May "
ሰኔ 2000	201.0	245.1	171.1	205.6	145.8	141.3	181.9	143.5	460.3	190.4	138.8	123.8	129.0	141.2	141.2	June "
2000																2008/2009
ሐምሌ 2000	223.8	295.1	183.9	224.9	148.7	142.9	182.5	147.2	477.1	190.4	134.4	133.8	133.6	142.9	142.9	July 2008
ኦገስት 2000	224.8	297.5	177.1	242.0	149.6	143.8	171.5	154.4	478.1	191.1	131.6	145.7	132.3	146.6	146.6	August "
ሐምሌ 2001	226.0	297.2	180.2	243.1	153.0	152.3	180.3	157.3	465.7	186.8	135.4	145.6	133.7	147.8	147.8	September "
ጥቅምት 2001	217.9	282.4	181.3	247.3	151.7	154.9	175.3	155.5	399.9	181.8	135.6	142.2	132.1	151.4	151.4	October "
ኅዳር 2001	204.1	252.4	178.8	250.2	151.3	153.1	168.9	154.1	356.2	181.7	138.2	149.2	129.7	152.0	152.0	November "
ታህሳስ 2001	183.9	212.1	161.5	234.3	149.5	144.4	159.5	152.5	312.1	182.8	139.9	152.5	127.2	151.5	151.5	December "
ጥር 2001	188.9	216.5	163.7	236.9	149.6	152.9	157.7	174.4	261.4	208.1	142.4	168.8	129.4	159.3	159.3	January 2009
የቀቲት 2001	190.0	215.8	172.2	242.5	152.0	157.5	153.7	180.7	236.6	214.7	145.0	175.4	132.0	159.1	159.1	February "
ጠገባት 2001	189.3	210.3	169.2	236.7	151.7	155.2	155.7	205.8	209.1	225.1	150.9	176.9	132.1	163.4	163.4	March "
ጊዳር 2001	191.1	210.5	175.7	225.7	156.3	161.9	153.8	208.7	208.3	230.8	152.5	180.4	138.3	166.1	166.1	April "
ግንቦት 2001	189.4	208.3	181.5	234.8	156.1	168.5	153.0	211.2	190.9	213.9	149.1	184.9	141.1	165.7	165.7	May "

ወጪ ስርዓት 11b:- ጠቅላላ የምግብ ክፍሎች የ ሽግግር ዋጋ መመዘኛ ኢንዱስትሪ ለገቢዎች ክልል መገንጠያ
 ታህሳስ 1999 = 100

Table 11b: Consumer Price Index of Total Food and Its Components for the SNNP Regional State
 December 2006 = 100

ወርና ዓመት	ጠቅላላ የምግብ	እህል	በቤት ውስጥ የተወሰኑ የምግብ ዓይነቶች			FOOD TAKEN AT HOME								ከቤት ውጭ የተወሰኑ የምግቦች	Month and Year	
			ጥራጥረ	ዳቦና ሌሎች የተዘጋጁ የምግቦች	ሥጋ	ወተት+ ዓይብና እንቁሳል	ዘይትና ቅባቶች	እትክልትና ፍራፍሬ	ትመግ ቅመም	ደንችና ሌሎች ሥራሥርቶች	ያልተቆላ ቡናና ሻይ ቅጠል	ሌሎች የምግቦች	የግብረጫ አገልግሎት			
ታህሳስ 1999	100.0	100.0	100.0	100.0	100.0	100.0	100.0	100.0	100.0	100.0	100.0	100.0	100.0	100.0	100.0	December 2006
ሐምሌ 1999 - ሰኔ 2000	131.1	136.1	122.9	126.9	121.5	119.2	143.7	146.8	264.5	117.1	132.2	112.2	106.0	107.1	107.1	July 2007 - June 2008
2001																2007/2008
መገቢት 2000	142.8	147.1	124.8	126.2	125.1	125.4	168.7	201.7	269.4	128.2	142.0	125.6	111.2	108.1	108.1	March "
ጊዳር 2000	148.0	156.3	127.7	127.1	129.3	129.1	168.7	202.7	284.0	131.0	144.7	125.3	112.7	111.4	111.4	April "
ግንቦት 2000	160.4	184.8	133.0	139.8	134.4	131.8	174.8	201.0	293.1	135.1	147.2	129.8	114.0	111.5	111.5	May "
ሰኔ 2000	199.4	265.9	147.1	202.5	150.2	144.0	165.5	191.1	328.8	164.8	149.5	140.6	120.2	116.5	116.5	June "
2000																2008/2009
ሐምሌ 2000	214.7	316.3	148.1	202.8	153.2	141.0	164.5	132.2	349.1	164.3	154.3	148.2	120.2	121.7	121.7	July 2008
ኤላሌ 2000	214.0	311.2	152.3	207.6	156.8	145.1	163.2	137.6	342.5	163.7	157.1	157.0	122.4	121.3	121.3	August "
መስከረም 2001	215.4	309.2	152.2	214.1	162.1	151.7	169.1	142.5	325.0	169.0	159.1	161.2	119.6	123.4	123.4	September "
ጥቅምት 2001	201.6	270.1	151.6	225.1	162.2	152.8	169.6	140.5	285.2	171.3	160.0	160.4	119.9	124.0	124.0	October "
ኅዳር 2001	186.0	232.7	150.7	234.1	153.2	153.3	165.2	134.6	255.8	167.9	148.7	169.9	118.6	124.5	124.5	November "
ታህሳስ 2001	173.5	199.2	158.6	237.0	150.1	153.9	161.7	141.0	225.7	168.6	131.0	173.4	117.5	128.9	128.9	December "
ጥር 2001	173.1	200.6	158.7	220.4	149.0	157.8	160.5	145.6	197.0	169.9	129.6	179.9	116.7	128.4	128.4	January 2009
የካቲት 2001	174.9	194.8	159.5	218.9	142.6	171.2	161.7	166.8	168.2	180.8	139.5	191.3	123.5	129.8	129.8	February "
መገቢት 2001	175.4	194.1	162.5	218.7	144.1	166.0	162.0	172.1	167.9	182.8	138.4	191.6	123.2	130.1	130.1	March "
ጊዳር 2001	180.2	202.7	161.6	215.8	148.1	166.9	184.3	181.8	166.3	184.7	139.6	190.6	121.7	131.2	131.2	April "
ግንቦት 2001	180.2	205.6	160.9	223.1	153.5	175.3	174.4	191.7	125.7	178.0	139.1	193.1	126.0	131.7	131.7	May "

ወንጠራዥ 12a:- ጠቅላላ የምግብ ክፍሎች የ ሽግግር ዋጋ መመዘኛ ሊያደገስ ለሰጧል ክልላዊ መንግሥት
 ታህሳስ 1999 = 100

Table 12b: Consumer Price Index of Total Food and Its Components for the Somali Regional State
 December 2006 = 100

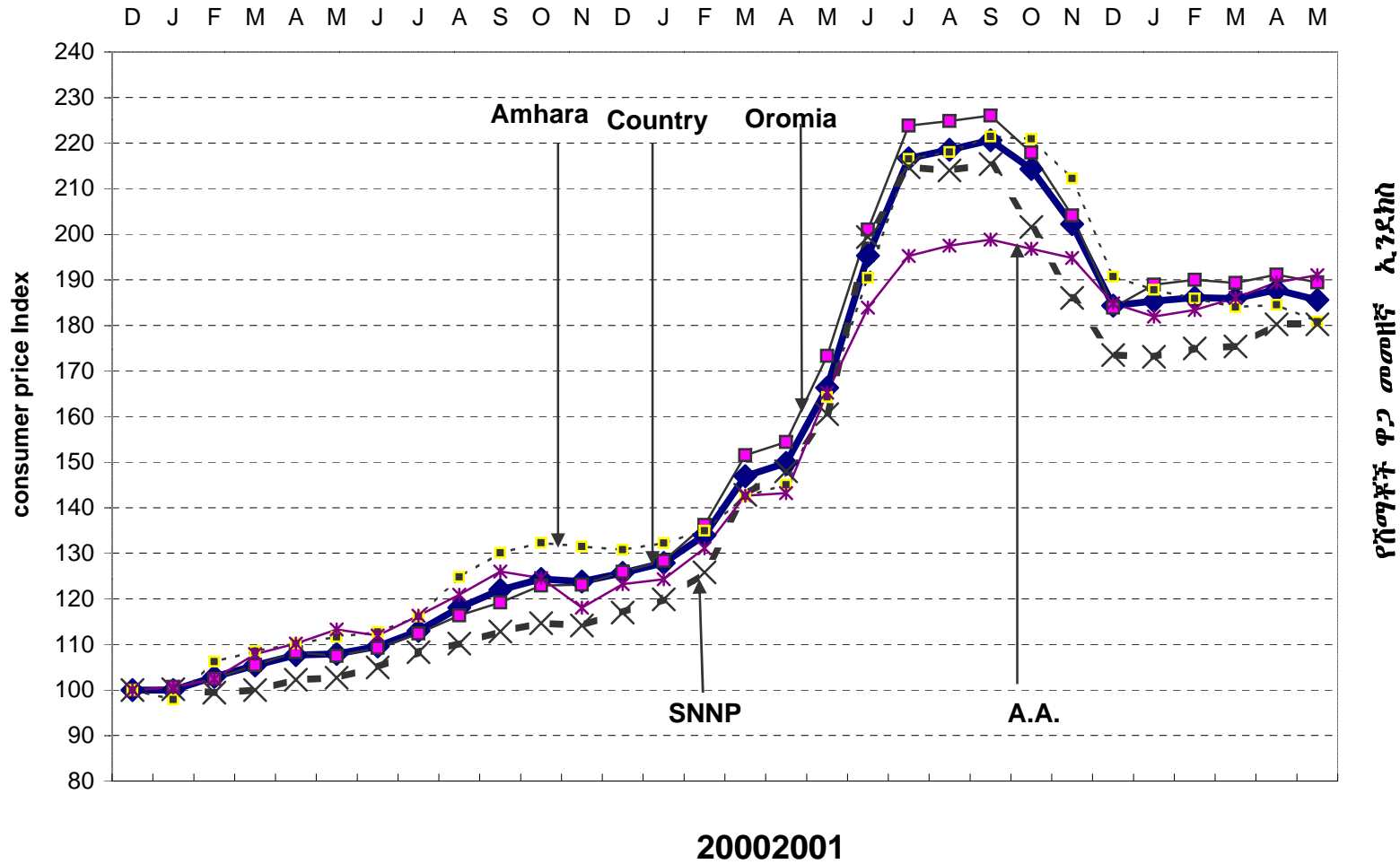
ወርና ዓመት	ጠቅላላ ምግብ	እህል	በቤት ውስጥ የተወለዱ የምግብ ዓይነቶች			FOOD TAKEN AT HOME									ከቤት ውጭ የተወለዱ ምግቦች	Month and Year
			ጥራጥራ	ዳቦና ሌሎች የተዘጋጁ ምግቦች	ሥጋ	ወተት+ ዓይብና እንቁሳል	ዘይትና ቅባቶች	እትክልትና ፍራፍራ	ትመግ ቅመም	ደገኞች ሌሎች ሥራ-ሥርዓቶች	ያልተቆላ ቡናና ካይ ቅጠል	ሌሎች ምግቦች	የግብረ-ጫ አገልግሎት			
ታህሳስ 1999	100.0	100.0	100.0	100.0	100.0	100.0	100.0	100.0	100.0	100.0	100.0	100.0	100.0	100.0	100.0	December 2006
ሐምሌ 1999 - ሰኔ 2000	124.6	136.0	124.9	120.3	126.3	103.1	138.8	128.3	299.8	145.0	115.8	102.8	99.2	120.5	120.5	July 2007 - June 2008
2001																2007/2008
መገቢት 2000	133.2	141.5	133.3	125.7	130.5	111.0	153.0	139.0	283.3	196.5	129.9	117.6	101.6	123.6	123.6	March "
ጊዳር 2000	136.3	145.6	136.3	126.6	130.0	112.9	160.9	134.9	291.7	196.1	135.0	118.6	103.3	122.8	122.8	April "
ግንቦት 2000	149.3	170.3	142.4	137.6	139.4	125.5	165.6	134.2	297.3	208.7	139.8	117.8	100.0	127.3	127.3	May "
ሰኔ 2000	171.1	219.8	172.5	164.5	147.1	142.6	180.8	111.1	308.3	259.7	124.5	124.9	106.2	141.2	141.2	June "
2000																2008/2009
ሐምሌ 2000	198.2	285.6	182.0	189.9	158.7	137.5	184.8	144.9	369.4	276.6	119.1	125.9	106.2	150.9	150.9	July 2008
ኤሌ 2000	208.6	301.8	190.3	200.9	162.2	159.7	186.2	162.7	388.9	221.6	119.3	130.2	104.8	149.6	149.6	August "
መስከረም 2001	212.0	300.3	192.3	205.4	163.7	164.4	182.9	165.2	333.3	190.0	126.3	156.5	106.3	151.2	151.2	September "
ጥቅምት 2001	202.5	275.9	190.2	211.8	162.1	166.2	178.3	168.0	333.3	195.2	120.3	156.6	110.1	152.1	152.1	October "
ኅዳር 2001	193.3	255.1	187.7	210.5	161.2	151.1	178.3	161.5	241.7	206.0	127.6	157.0	108.4	156.4	156.4	November "
ታህሳስ 2001	170.6	197.2	163.3	196.3	150.0	154.5	170.5	141.3	250.0	213.9	132.3	156.9	107.7	156.1	156.1	December "
ጥር 2001	185.4	217.0	163.9	204.8	168.4	170.2	167.8	159.7	250.0	225.1	158.0	156.7	102.5	149.7	149.7	January 2009
የካቲት 2001	194.0	227.8	166.1	214.3	169.3	180.6	175.2	149.1	250.0	216.5	172.2	157.3	104.4	156.7	156.7	February "
መገቢት 2001	191.1	222.5	166.1	218.1	165.0	178.4	170.5	159.5	238.8	232.5	166.5	156.6	116.7	162.4	162.4	March "
ጊዳር 2001	194.6	218.7	169.4	215.7	179.8	204.8	170.8	166.1	225.0	241.6	171.5	157.0	116.7	165.3	165.3	April "
ግንቦት 2001	196.3	226.2	167.0	215.7	187.2	192.1	169.2	182.6	208.3	230.7	171.7	157.4	117.0	167.5	167.5	May "

ሠንጠረዥ 13b:- ጠቅላላ የምግብ ክፍሎች የሽግግር ዋጋ መመዘኛ ኢንዱስትሪ ለትግራይ ክልል መገንጠያ
 ታህሳስ 1999 = 100

Table 13b: Consumer Price Index of Total Food and Its Components for the Tigray Regional State
 December 2006 = 100

ወርና ዓመት	ጠቅላላ የምግብ	እህል	በቤት ውስጥ የተወሰዱ የምግብ ዓይነቶች					FOOD TAKEN AT HOME					ከቤት ውጭ የተወሰዱ የምግቦች	Month and Year	
			ጥራጥረ	ዳቦና ሌሎች የተዘጋጁ የምግቦች	ሥጋ	ወተት+ ዓይብና እንቁሳል	ዘይትና ቅባቶች	እትክልትና ፍራፍሬ	ትመግ ቅመም	ደንችና ሌሎች ሥራ-ሥርቶች	ያልተቆላ ቡናና ካይ ቅጠል	ሌሎች የምግቦች			የግብረ-ግ አገልግሎት
ታህሳስ 1999	100.0	100.0	100.0	100.0	100.0	100.0	100.0	100.0	100.0	100.0	100.0	100.0	100.0	100.0	December 2006
ሐምሌ 1999 - ሰኔ 2000	143.4	138.5	129.3	126.5	122.8	114.8	166.5	122.5	345.0	149.0	127.1	104.2	113.7	124.7	July 2007 - June 2008
2001															2007/2008
መገቢት 2000	155.2	158.3	133.1	133.5	120.3	116.5	194.9	102.4	342.4	183.7	135.9	111.6	119.1	129.2	March "
ጊዳር 2000	156.5	160.2	132.5	130.1	123.9	118.1	197.0	102.6	341.6	186.8	138.4	108.6	119.7	130.2	April "
ግንቦት 2000	166.7	173.5	139.8	139.3	131.4	125.7	204.1	106.1	355.4	212.8	144.3	116.0	121.0	135.2	May "
ሰኔ 2000	207.2	240.0	162.2	179.8	137.3	135.0	207.0	104.7	394.0	210.1	150.1	125.8	120.0	149.2	June "
2001															2008/2009
ሐምሌ 2000	230.2	279.5	169.2	192.0	137.1	146.5	200.2	116.8	422.1	195.2	150.4	130.7	120.7	151.3	July 2008
ኤሌ 2000	237.7	284.9	179.7	206.0	138.6	150.1	200.0	151.1	447.1	216.3	153.9	149.2	122.8	153.5	August "
መስከረም 2001	244.3	293.5	193.7	198.8	148.1	154.7	202.9	180.7	422.5	211.9	146.7	147.1	124.6	161.7	September "
ጥቅምት 2001	241.1	289.5	202.2	201.6	141.4	161.2	195.2	169.4	410.8	197.4	140.9	140.4	123.9	165.1	October "
ኅዳር 2001	223.4	268.0	190.8	207.8	137.5	162.7	182.6	142.7	336.1	220.3	141.8	141.2	133.0	155.8	November "
ታህሳስ 2001	206.8	241.9	174.6	192.8	136.9	160.8	185.5	135.4	300.4	212.3	142.8	145.3	133.0	158.2	December "
ጥር 2001	200.8	235.7	165.5	191.5	140.3	157.8	179.8	138.6	254.4	203.1	139.9	159.2	125.2	158.8	January 2009
የካቲት 2001	200.2	235.4	173.7	195.4	139.3	159.7	180.4	150.8	193.1	208.3	148.6	170.3	134.2	164.4	February "
መገቢት 2001	203.3	240.4	183.8	193.1	135.3	159.6	181.2	164.3	174.1	226.0	148.2	170.5	138.3	168.7	March "
ጊዳር 2001	203.7	243.8	178.1	200.8	138.8	160.4	176.3	163.8	158.8	236.6	152.0	169.3	137.2	162.7	April "
ግንቦት 2001	191.6	217.2	177.7	214.4	144.3	161.7	179.2	177.1	161.7	229.5	149.2	176.3	138.8	164.1	May "

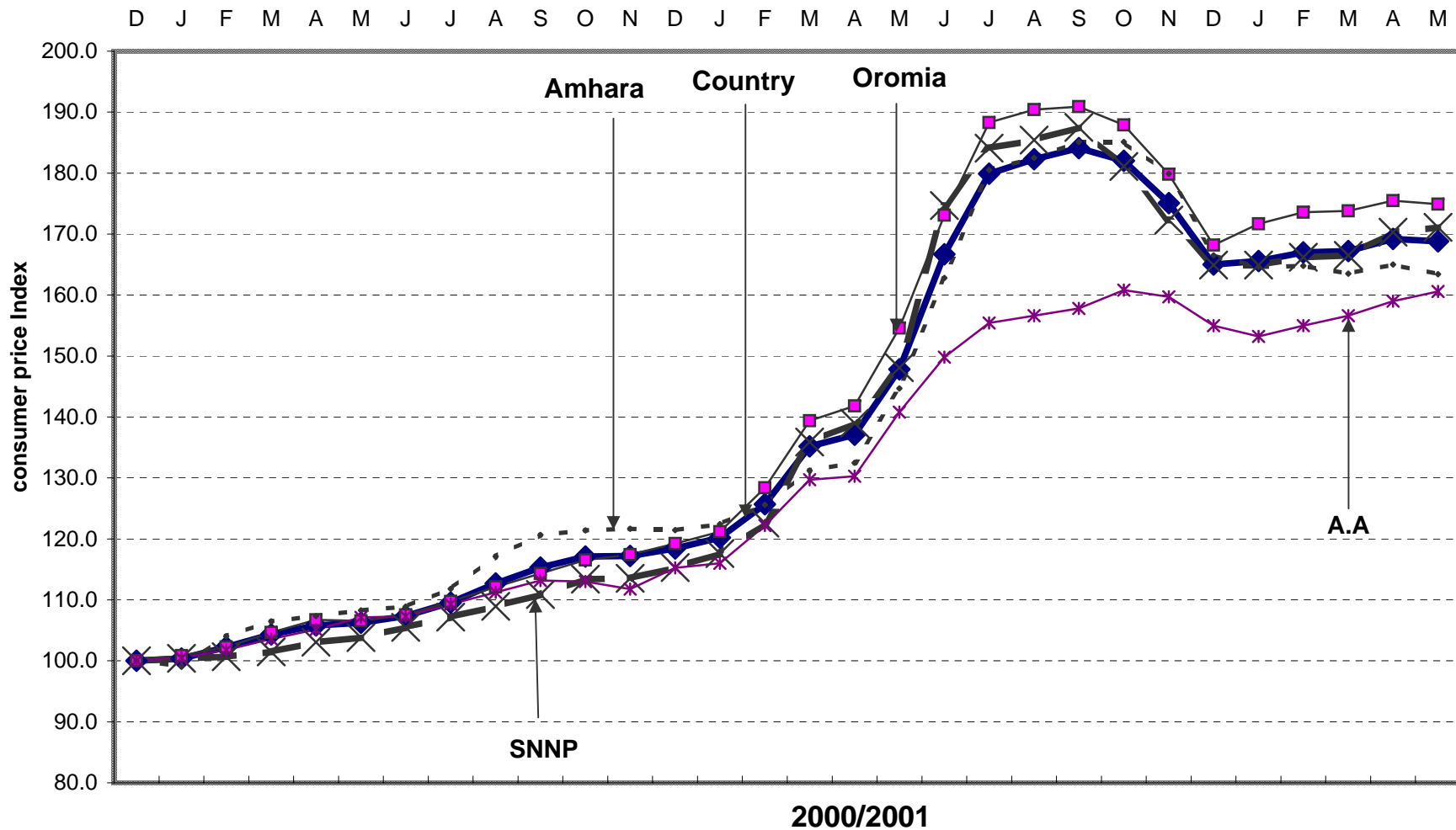
Food CPI for Country Level and Major Regions
የምግብ የሽማጃዎች ዋጋ ኢንዱክስ ለአገር አቀፍና ለዋና ዋና ክልሎች
2008/2009



የሽማጃዎች ዋጋ መመዘኛ ኢንዱክስ

General CPI for Country Level and Major Regions

ጠቅላላ የሽያጭ ሰንጠረዥ ለአገር አቀፍና ለዋና ዋና ክልሎች
2008/2009



የሽያጭ ሰንጠረዥ አገልግሎት

