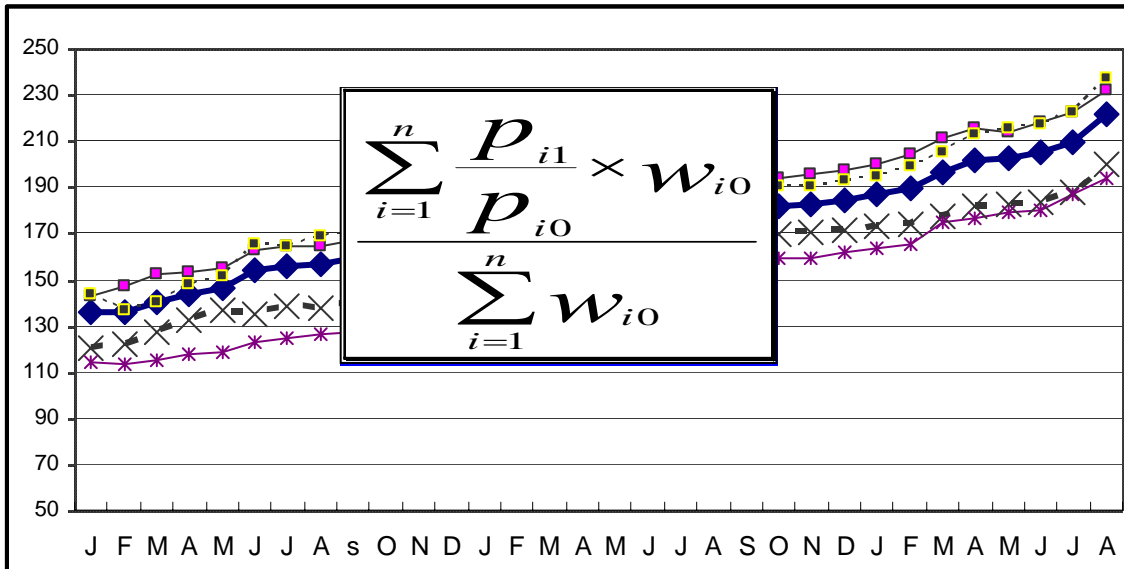


በኢትዮጵያ ፌዴራላዊ ዲሞክራሲያዊ ሪፐብሊክ
 የማዕከላዊ ስታቲስቲክስ ኤጀንሲ

THE FEDERAL DEMOCRATIC REPUBLIC OF ETHIOPIA
CENTRAL STATISTICAL AGENCY

የአገር አቀፍና የክልሎች የሽማግሌት ዋጋ መመዘኛ ኢንዱክሶች
 የሰኔ ወር 2001 ዓ.ም.
 [ታህሳስ 1999 = 100]
 መረጃ ቁጥር 21

COUNTRY AND REGIONAL LEVEL CONSUMER PRICE INDICES



[December 2006 =100]

For the month of June 2009

Information No. 21

Tel: 251-11-1 553011
 Fax: 251-11-1550334.
 Email: csa@ethionet.et

አዲስ አበባ
 ሰኔ 29 ቀን 2001 ዓ.ም.
 ADDIS ABABA
 06 July 2009

CONTENTS

	Page
Introduction.....	4
Inflation Rate.....	8
Comparison of CPI Movements, Current Vs Last Year's Similar Months, at country Level.....	10
Comparison of CPI Movements, Current Vs Last Year's Similar Months, at country and Regional Levels.....	11

List of Tables

Table a: Number of Markets Covered and Basket of Commodities by Region.....	2
Table 1a: General Consumer Price Index and Its Components at Country Level.....	13
Table 1b: Consumer Price Index of Total Food and Its Components at Country Level.....	14
Table 1c: Consumer Price Index of House Rent, Construction Materials, Water, Fuel and Power and Its Components at Country Level.....	15
Table 2a: Summary of General Consumer Price Indices at Country and Regional Levels.....	16
Table 2b: Summary of Consumer Price Indices of Food at Country and Regional Levels.....	18
Table 3a: General Consumer Price Index and Its Components for the City of Addis Ababa Administration.....	20
Table 3b: Consumer Price Index of Total Food and Its Components for the City of Addis Ababa Administration.....	21
Table 4a: General Consumer Price Index and Its Components for the Afar Regional State.....	22
Table 4b: Consumer Price Index of Total Food and Its Components for the Afar Regional State.....	23
Table 5a: General Consumer Price Index and Its	

Components for the Amhara Regional State.....	24
Table 5b: Consumer Price Index of Total Food and Its	
Components for the Amhara Regional State.....	25
Table 6a: General Consumer Price Index and Its	
Components for the Benishangul-Gumuz Regional State.....	26
Table 6b: Consumer Price Index of Total Food and Its	
Components for the Benishangul-Gumuz Regional State.....	27
Table 7a: General Consumer Price Index and Its	
Components for the Dire Dawa Administrative Council.....	28
Table 7b: Consumer Price Index of Total Food and Its	
Components for the Dire Dawa Administrative Council.....	29
Table 8a: General Consumer Price Index and Its	
Components for the Gambela Peoples Regional State.....	30
Table 8b: Consumer Price Index of Total Food and Its	
Components for the Gambela Peoples Regional State.....	31
Table 9a: General Consumer Price Index and Its	
Components for the Harari Peoples Regional State.....	32
Table 9b: Consumer Price Index of Total Food and Its	
Components for the Harari Peoples Regional State.....	33
Table 10a: General Consumer Price Index and Its	
Components for the Oromia Regional State.....	34
Table 10b: Consumer Price Index of Total Food and Its	
Components for the Oromia Regional State.....	35
Table 11a: General Consumer Price Index and Its	
Components for the SNNP Regional State.....	36
Table 11b: Consumer Price Index of Total Food and Its	
Components for the SNNP Regional State.....	37
Table 12a: General Consumer Price Index and Its	
Components for the Somali Regional State.....	38
Table 12b: Consumer Price Index of Total Food and Its	
Components for the Somali Regional State.....	39
Table 13a: General Consumer Price Index and Its	
Components for the Tigray Regional State.....	40
Table 13b: Consumer Price Index of Total Food and Its	
Components for the Tigray Regional State.....	41

Introduction

The Consumer Price Index (CPI) measures the average change in the price paid by consumers for a fixed market basket of goods and services. It is usually based on household expenditure weights of the goods and services in the basket and their current market prices. The twelve CPI's (i.e., the CPI's of the 11 Regions and the CPI at Country Level) presented in this report are based on the results of the Household Income, Consumption and Expenditure Survey (HICES) conducted by the Central Statistical Agency in 2004/2005 from which expenditure weights are derived for major household goods and services of that period and adjusted using the December 2006 retail prices of the goods and services as a base period.

The December 2006 based CPI updates the previous CPI series (i.e. December 2000 based) and the newly selected baskets are more diversified and the weights are more accurate. It also showed various improvements and incorporates non-food index as an independent group. The new series is constructed for country as a whole and Regional States including Dire Dawa and the Addis Ababa City Administration. However, similar indices had been utilized at Addis Ababa Level since 1963 and at Country, Urban and Rural Levels since 1995/96 and in Country and Regional level since 2000.

All the twelve general indices are divided into two major groups that is food and non-food index. The non-food index has ten major groups each, namely: Beverages; Cigarettes and Tobacco; Clothing and Footwear; House Rent, Construction Materials, Water, and Fuel and Power; Furniture, Furnishing, Household Equipment and Operation; Medical Care and Health; Transport and Communication; Recreation, Entertainment and Education; Personal Care and Effects; and Miscellaneous Goods and Services. On the other hand, the Food Index has 13 sub-groups. These are: Cereals; Pulses; Bread and Other Prepared Food; Meat; Milk, Cheese and Eggs; Vegetables and

Fruits; Oil and Fats Spices; Potatoes, Other Tubers and Stems; Coffee Beans (whole) and Tea Leaves; Other Food Items; Milling Charges; and Food taken Away from Home. Furthermore, the new CPI based on December 2006 includes more detailed #Housing, Construction materials, Water and Fuel and Power; components.

For the construction of the current consumer price indices, up to date data on retail prices are collected in the purposely selected sample market places located in representative urban centers in each zone/special weredas of the country. Hence, a total of 119 market places were selected for the retail price survey. In each market place an enumerator is assigned to undertaking the data collection activities. The price data is collected from the 1st day through 15th days of European Calendar month under consideration. To calculate the monthly regional consumer price indices, geometric means of prices of the specific regions are used. The distribution of the market place of each region and items included in the basket of commodities are given on Table A on page 2.

An important factor in constructing a Consumer Price Index is to select the representative basket of goods and services. Including all consumption items into the market basket of goods and services is both cumbersome and unnecessarily costly in term of data collection and processing. Furthermore, it doesn't make sense to include an insignificant weight into an index basket which could not move the price relative up or downwards compared to the general market trend. As a result, basket of goods and services included in the regional baskets are determined by expenditure cut-off point. The total numbers of items included in the regional basket in the December 2006 based indices are given in Table A on page 2.

Country level CPI aggregates the regional group indices and the contributions of the five relatively big regions in terms of the magnitude of the expenditure account for more than 95 percent. These regions are Oromiya, Amhara, SNNP, Addis Ababa and Tigray. On the other hand, the contributions of the remaining regions to the

Country Level Consumer Price Index is about five percent.

According to the weights for food and non-food groups in Table B below, the December 2006 based CPI is about 57 percent of household expenditure spent on the food component, which declined by 3 percentage points as compared to the December 2000 based CPI. On the other hand, the expenditure on non-food components increased from 40 percent to 43 percent. This indicates that the economic situation in the country is going in the right direction as postulated by economic theory. Similarly, in this period larger regions resulted in a substantial decrease in the average weights for food, despite the increased food taken out of home. It was offset mainly by an increase in housing, construction materials, water and fuel and power, furnishing and transport and communication.

Table B: Major groups in the 2000 and 2006 based CPI and their weights at Country Level

No.	Major Group	Weights	
		2000 based CPI	2006 based CPI
1	Food	0.6008	0.5701
2	Non-Food	0.3992	0.4299
3	Beverages	0.0201	0.0202
4	Cigarettes and Tobacco	0.0051	0.0048
5	Clothing and Footwear	0.0926	0.0832
6	House Rent, Construction Materials, Water and Fuel and Power	0.1544	0.2056
7	Furniture, Furnishing, Household Equipment and Operation	0.0494	0.0375
8	Medical Care and Health	0.0120	0.0111
9	Transport and Communication	0.0199	0.0249
10	Recreation, Entertainment and Education	0.0101	0.0109
11	Personal Care and Effects	0.0092	0.0083
12	Miscellaneous Goods	0.0264	0.0234
	Total	1.000	1.000

መግቢያ..... 1
 የወሩ ዋጋ ግሽበት ሁኔታ 7

የዘንድሮውና የአምናው ተመሳሳይ ወሮች የሽማግሌት ዋጋ መመዘኛ ጠቋሚ አሀዝ ንፅፅር በአገር አቀፍ ደረጃ 10

የዘንድሮውና የአምናው ተመሳሳይ ወሮች የሽማግሌት ዋጋ መመዘኛ ጠቋሚ አሀዝ ንፅፅር በአገር አቀፍና በክልሎች ደረጃ..... 11

የሠንጠረዦች ዝርዝር

ሠንጠረዥ ሀ: በጥናቱ የተሸፈኑ ገበያዎችና በኢንዱስትሪ ማዕቀፍ የተካተቱ ዕቃዎችና በዕቃዎች/አገልግሎቶች ብዛት በክልል..... 2

ሠንጠረዥ 1ሀ: ጠቅላላ የሽማግሌት ዋጋ መመዘኛ ኤንዱስትሪና በስሩ የተካተቱ ክፍሎች በአገር አቀፍ ደረጃ..... 13

ሠንጠረዥ 1ለ: ጠቅላላ ምግብና የምግብ ክፍሎች የሽማግሌት ዋጋ መመዘኛ ኤንዱስትሪ በአገር አቀፍ ደረጃ..... 14

ሠንጠረዥ 1ሐ: አገር አቀፍ የቤት ኪራይ፣ የቤት መስሪያ ዕቃዎች፣ ውሃና ኬነርጂ የሽማግሌት ዋጋ መመዘኛ ኤንዱስትሪ 15

ሠንጠረዥ 2ሀ: ጠቅላላ የሽማግሌት ዋጋ መመዘኛ ኤንዱስትሪ በአገር አቀፍና በክልሎች ደረጃ 16

ሠንጠረዥ 2ለ: የምግብ ዋጋ መመዘኛ ኤንዱስትሪ ማጠቃለያ በአገር አቀፍ እና በክልሎች ደረጃ 18

ሠንጠረዥ 3ሀ: ጠቅላላ የሽማግሌት ዋጋ መመዘኛ ኤንዱስትሪና በስሩ የተካተቱ ክፍሎች ለአዲስ አበባ ከተማ መስተዳድር 20

ሠንጠረዥ 3ለ: ጠቅላላ ምግብና የምግብ ክፍሎች የሽማግሌት ዋጋ መመዘኛ ኤንዱስትሪ ለአዲስ አበባ ከተማ መስተዳድር 21

ሠንጠረዥ 4ሀ: ጠቅላላ የሽማግሌት ዋጋ መመዘኛ ኤንዱስትሪና በስሩ የተካተቱ ክፍሎች ለአፋር ክልላዊ መንግስት..... 22

ሠንጠረዥ 4ለ: ጠቅላላ ምግብና የምግብ ክፍሎች የሽማግሌት ዋጋ መመዘኛ ኤንዱስትሪ ለአፋር ክልላዊ መንግስት..... 23

ሠንጠረዥ 5ሀ: ጠቅላላ የሽማግሌት ዋጋ መመዘኛ ኤንዱስትሪና በስሩ የተካተቱ ክፍሎች ለአማራ ክልላዊ መንግስት..... 24

ሠንጠረዥ 5ለ: ጠቅላላ ምግብና የምግብ ክፍሎች የሽማግሌት ዋጋ መመዘኛ ኤንዱስትሪ ለአማራ ክልላዊ መንግስት..... 25

ሠንጠረዥ 6ሀ: ጠቅላላ የሽማግሌት ዋጋ መመዘኛ ኤንዱስትሪና በስሩ የተካተቱ ክፍሎች ለቤንሻንጉል-ጉሙዝ ክልላዊ መንግስት..... 26

ሠንጠረዥ 6ለ: ጠቅላላ ምግብና የምግብ ክፍሎች የሽማግሌት ዋጋ መመዘኛ ለቤንሻንጉል-ጉሙዝ ክልላዊ መንግስት..... 27

ሠንጠረዥ 7ሀ: ጠቅላላ የሸማቾች ዋጋ መመዘኛ ኤንደክስና በስሩ የተካተቱ ክፍሎች ለድሬደዋ አስተዳደር ካውንስል	28
ሠንጠረዥ 7ለ: ጠቅላላ ምግብና የምግብ ክፍሎች የሸማቾች ዋጋ መመዘኛ ለድሬደዋ አስተዳደር ካውንስል	29
ሠንጠረዥ 8ሀ: ጠቅላላ የሸማቾች ዋጋ መመዘኛ ኤንደክስና በስሩ የተካተቱ ክፍሎች ለጋምቤላ ህዝቦች ክልላዊ መንግስት	30
ሠንጠረዥ 8ለ: ጠቅላላ ምግብና የምግብ ክፍሎች የሸማቾች ዋጋ መመዘኛ ለጋምቤላ ህዝቦች ክልላዊ መንግስት	31
ሠንጠረዥ 9ሀ: ጠቅላላ የሸማቾች ዋጋ መመዘኛ ኤንደክስና በስሩ የተካተቱ ክፍሎች ለለሐረሪ ህዝብ ክልላዊ መንግስት	32
ሠንጠረዥ 9ለ: ጠቅላላ ምግብና የምግብ ክፍሎች የሸማቾች ዋጋ መመዘኛ ኤንደክስ ለለሐረሪ ህዝብ ክልላዊ መንግስት	33
ሠንጠረዥ 10ሀ: ጠቅላላ የሸማቾች ዋጋ መመዘኛ ኤንደክስና በስሩ የተካተቱ ክፍሎች ለአሮሚያ ክልላዊ መንግስት	34
ሠንጠረዥ 10ለ: ጠቅላላ ምግብና የምግብ ክፍሎች የሸማቾች ዋጋ መመዘኛ ኤንደክስ ለአሮሚያ ክልላዊ መንግስት	35
ሠንጠረዥ 11ሀ: ጠቅላላ የሸማቾች ዋጋ መመዘኛ ኤንደክስና በስሩ የተካተቱ ክፍሎች ለደ.ኢ.ብ.ብ.ሀ ክልላዊ መንግስት	36
ሠንጠረዥ 11ለ: ጠቅላላ ምግብና የምግብ ክፍሎች የሸማቾች ዋጋ መመዘኛ ኤንደክስ ለደ.ኢ.ብ.ብ.ሀ ክልላዊ መንግስት	37
ሠንጠረዥ 12ሀ: ጠቅላላ የሸማቾች ዋጋ መመዘኛ ኤንደክስና በስሩ የተካተቱ ክፍሎች ለሶማሌ ክልላዊ መንግስት	38
ሠንጠረዥ 12ለ: ጠቅላላ ምግብና የምግብ ክፍሎች የሸማቾች ዋጋ መመዘኛ ኤንደክስ ለሶማሌ ክልላዊ መንግስት	39
ሠንጠረዥ 13ሀ: ጠቅላላ የሸማቾች ዋጋ መመዘኛ ኤንደክስና በስሩ የተካተቱ ክፍሎች ለትግራይ ክልላዊ መንግስት	38
ሠንጠረዥ 13ለ: ጠቅላላ ምግብና የምግብ ክፍሎች የሸማቾች ዋጋ መመዘኛ	41

መግቢያ

የሽማግሌዎች ዋጋ መመዘኛ ኢንዱክሽን ማለት ሽማግሌዎች ለተወሰኑ ዕቃዎችና አገልግሎቶች የከፈሉትን አማካይ የዋጋ ለውጥ ለመለካት የሚያገለግል ጠቋሚ አህዝ ነው። የዋጋ መመዘኛ ኢንዱክሽን አብዛኛውን ጊዜ መሠረት የሚያደርገው የቤተሰብ ገቢ፣ ፍጆታና ወጪ ጥናት ወጤት በሆነው ቤተሰቦች በዕቃዎችና ግልጋሎቶች ለይ ባወጡት የመቶኛ ድርሻ መጠንና የወቅቱ የገበያ ዋጋ ላይ ነው። በዚህ ሪፖርት ውስጥ የተካተቱት 12 ኢንዱክሶች (የ11 ክልሎችና የአገር አቀፍ) መሠረት ያደረጉት የማዕከላዊ ስታቲስቲክስ ኤጀንሲ በ1996/97 በጀት ዓመት በመላ አገሪቱ በናሙና በተመረጡ ቦታዎች ያካሄደውን የቤተሰብ ገቢ፣ ፍጆታና ወጪ ጥናት ወጤት ነው።

ይህ ታህሳስ ወር 1999 ዓ.ምን መሠረት ያደረገው (ታህሳስ 1999=100) የሽማግሌዎች ዋጋ መመዘኛ ኢንዱክሽን በክልል ደረጃ ሲዘጋጅ በዓይነቱ ለሁለተኛ ጊዜ የተዘጋጀ ሲሆን በታህሣሥ 1993 ዓ.ም. መሠረት ያደረገውን የሽማግሌዎች መመዘኛ ኢንዱክሽን የሚተካ ነው። በአገር አቀፍ ደረጃ ከ1988 ጀምሮና በአዲስ አበባ ከተማ ደረጃ ደግሞ ከ1955 ዓ.ም ጀምሮ በየወሩ ተመሳሳይ ኢንዱክሶች እየተዘጋጁ ለተጠቃሚዎች ሲሰራጩ መቆየታቸው ይታወቃል። እነዚህ 12 የዋጋ መመዘኛ ኢንዱክሶች በአገሪቱ የሚገኙ 11 ክልሎችና የአገር አቀፍን ሪፖርት ጨምሮ የሚሸፍነው የዕቃዎችና የአገልግሎቶችን ክምችት በያዙ ሁለት ዋና ክፍሎች የተከፈሉ ናቸው። እነሱም፡- የምግብና ምግብ ነክ ያልሆኑ መመዘኛ ኢንዱክሶች ሲሆን ምግብ ነክ ያልሆኑ መመዘኛ ኢንዱክሽን እንደገና በ10 ንዑስ ክፍሎች ይከፈላል። እነዚህም መጠጥ፣ ሲጃራና ትምባሆ፣ ልብስና መጫሚያ፣ የቤት ኪራይ፣ የቤት መሥሪያ ዕቃዎች፣ ወሃና ኢነርጂ፣ የቤት ዕቃዎች፣ የቤት ማስገጫዎች፣ የቤት ቁሳቁስና የቤት ሠራተኛ ደመወዝ፣ ሕክምና፣ መንገዥና መገናኛ፣ መዝናኛና ትምህርት፣ የግል ንጽህናና የግል ቋሚ ዕቃዎች እንዲሁም ሌሎች ዕቃዎችና አገልግሎቶች ሲሆኑ የሁሉም ክፍሎች አጠቃላይ ወጤት የሚሆነው ደግሞ የጠቅላላ ዋጋዎች መመዘኛ ኢንዱክሽን ነው።

በሁሉም ክልሎች የጠቅላላ ዋጋ መመዘኛ ኢንዱክሶች ስሌት አብዛኛውን የመቶኛ ወጪ ድርሻ የሚይዘው የምግብ መመዘኛ ኢንዱክሽን ሲሆን በሁሉም የምግብ ዋጋ መመዘኛ ኢንዱክሶች ዋና ዋና ክፍሎች እህል፣ ጥራጥሬ፣ ዳቦና ሌሎች የተዘጋጁ ምግቦች፣ ሥጋ፣ ወተት፣ ዐይብና ዕንቁላል፣ ዘይትና ቅባቶች፣ አትክልትና ፍራፍሬ፣ ቅመማ ቅመም፣ ድንችና ሌሎች ሥራሥሮች፣ ያልተቆላ ቡናና ሻይ ቅጠል፣ ሌሎች ምግቦች፣ የማስፈጫ አገልግሎትና ከቤት ወጪ የተወሰዱ ምግቦች ናቸው።

ለዋጋ ኢንዱክሶቹ የተመረጡት ዕቃዎችና አገልግሎቶች የዋጋ መረጃ የሚሰበሰበው በየዞን/ በየልዩ ወረዳ በናሙና በተመረጡ ወካይ ከተሞች ውስጥ ባሉ የገበያ ቦታዎች ነው። በመሆኑም ከእያንዳንዱ ዞን ሁለት ከተሞች (የገበያ ቦታዎች) የተመረጡ ሲሆን እንደዚሁም በእያንዳንዱ ልዩ ወረዳ አንድ ከተማ (የገበያ ቦታ) በጥናቱ እንዲካተት ተደርጓል።

በእነዚህ ከተሞች ውስጥ ተመድበው ለሚሰሩ መረጃ ሰብሳቢዎች በየበጀት ዓመቱ መጨረሻ በመረጃ አሰባሰብ ዘዴው ላይ ስልጠና የሚሰጥ ሲሆን ለአሰባሰቡ የሚረዱ የመስክ መገልገያ መሣሪያዎች (ሚዛን፣ ሜተር ... ወዘተ) ይሰጣቸዋል። እነዚህ መሣሪያዎችን በመጠቀም በየወሩ የዋጋ መረጃዎችን ከነጋዴዎች ይሰበስባሉ። አንዳንድ ጊዜም አንድ በላተኛ ወይም ገዢ ከነጋዴ ሲገዛ ቢገኝና ለሥራው ተባባሪነቱን ካሳየ መረጃው ከርሱም ይሰበስባል። የችርቻሮ ዋጋ መረጃ የሚሰበሰበው እንደ አውሮፓውያን ዘመን አቆጣጠር ወሩ በገባ ከ1ኛው ቀን አንስቶ አስከ 15ኛው ቀን ነው። የክልል ኢንዱስትሪ ለማስላት ለኢንዱስትሪ ለተመረጡት ዕቃዎችና አገልግሎቶች አማካይ የችርቻሮ ዋጋቸውን የጂኦሜትሪክ ሚን ዘዴ ጥቅም ላይ ወሎአል። የኢንዱስትሪ ሪፖርቱም በየወሩ ለተጠቃሚዎች በዚህ መልክ ይቀርባል።

የአገር አቀፍ የችርቻሮ ዋጋ መመዘኛ ኢንዱስትሪ የሚሰላው እያንዳንዱ ክልል ለአገር አቀፍ የቤተሰብ ወጪ ያለውን የመቶኛ ድርሻ መሠረት በማድረግ ነው። በመሆኑም ለአገር አቀፍ ኢንዱስትሪ ስሌት ከ95 በመቶ በላይ አስተዋጽኦ የሚያደርጉ ክልሎች በቅደም ተከተል ኦሮሚያ፣ አማራ፣ የደቡብ ብሔር ብሔረሰቦችና ሕዝቦች፣ አዲስ አበባና ትግራይ ሲሆኑ የተቀሩት ክልሎች በየወሩ ለሚታዩው አገር አቀፍ የችርቻሮ ዋጋ መመዘኛ ኢንዱስትሪ ስሌት የሚኖራቸው አስተዋጽኦ ከአምስት በመቶ የማይበልጥ ነው።

ለችርቻሮ ዋጋ ጥናት በአጠቃላይ 119 የገበያ ቦታዎች የተመረጡ ሲሆን በእያንዳንዱ ክልል የተመረጡ የናሙና ገበያዎች ብዛትና በየኢንዱስትሪዎቻቸው ማዕቀፍ የተካተቱ ዕቃዎች/አገልግሎቶች ብዛት ከዚህ በታች ቀርቦአል።

ሠንጠረዥ ሀ: በጥናቱ የተሸፈኑ ገበያዎችና በኢንዱስትሪ ማዕቀፍ የተካተቱ ዕቃዎች/አገልግሎቶች ብዛት በክልል

Table A: Number of Markets Covered and Basket of Commodities by Region

ተራ ቁጥር	ክልል	የገበያ ቦታዎች ብዛት	በኢንዱስትሪ የተካተቱ ዕቃዎች/አገልግሎቶች ብዛት		Region
			ታህሳስ 1993=100	ታህሳስ 1999=100	
1	ትግራይ	8	114	143	Tigray
2	አፋር	4	85	153	Afar
3	አማራ	20	118	144	Amhara
4	ኦሮሚያ	24	127	161	Oromia
5	ሶማሌ	6	85	122	Somalie
6	ቤኒሻንጉል	6	111	142	Benishangul-Gumuz
7	ጊ.ቤ.ቤ.ሀ	31	130	152	SNNP
8	ጋምቤላ	3	105	103	Gambela
9	ሐረሪ	2	102	158	Harari
10	አዲስ አበባ ከተማ	12	175	193	Addis Ababa City Administration
11	ድራዳዋ አስተዳደር ድምር	3	121	150	Dire Dawa Administrative
		119			Total
Sr.No.		Number of Markets	Basket of Commodities		

ለጠቋሚ አሀዙ ክንዋኔ ዋናው ነገር በጠቋሚ አሀዙ ማዕቀፍ ተካትተው በዋናነት የሚያገለግሉ ዕቃዎችና አገልግሎቶች የመምረጥ ጉዳይ ነው። ጠቋሚ አሀዞች የሚመሠረቱት በአጠቃላይ በናሙና በሚመረጡ ዕቃዎች ላይ ሲሆን በጠቋሚ አሀዙ ማዕቀፍ ውስጥ መካተት የሚገባው ዕቃ መወሰን ግን ሁሌም ቀላል የሚባል ተግባር አይደለም። የተለያየ የአመራረጥ ዘዴ መጠቀም ቢቻልም የሚመረጡት ዕቃዎች ለረጅም ጊዜ የሚኖራቸው ተፈላጊነት፣ በአስተማማኝ ሁኔታ በገበያ ላይ የመገኘታቸው ጉዳይ፣ ሌሎችን ዕቃዎች የመወከል ብቃትና ከሌሎች ምርቶች ጋር ያላቸው ተወዳዳሪነት መሠረት ያደረገ እንዲሆን ይፈለጋል። በአጠቃላይ የተመረጡት ዕቃዎች በበቂ መጠን የመገኘታቸው ሁኔታ፣ በየወቅቱ ተወዳዳሪነታቸውና ዕቃዎችና አገልግሎቶች ምድቡን የመወከላቸው ብቃትን ማረጋገጥ ያስፈልጋል።

ታህሳስ 1999 ዓ.ም. መሠረት ያደረገው የሸማቾች ዋጋ መመዘኛ ኢንዱክስ አይነቶችና እያንዳንዱ ዋና ክፍል ያለው የወጪ ድርሻ በገፅ 6 ላይ ይታያል። ይህ ሠንጠረዥ እንደሚያሳየው የምግብ የመቶኛ የወጪ ድርሻ ታህሳስ 1993 ዓ.ም. ከነበረው 60 በመቶ ወደ 57 በመቶ ቀንሷል። በአንፃሩ ደግሞ ምግብ ነክ ያልሆነ መመዘኛ ኢንዱክስ ታህሳስ 1993 ዓ.ም. ከነበረው 40 በመቶ የወጪ ድርሻ ወደ 43 በመቶ ከፍ ብሏል። ባጠቃላይ ሲታይ በሁሉም ክልሎች ኢንዱክስ ላይ የምግብ የወጪ ድርሻ የማይናቅ ቅናሽ ያሳየ ሲሆን ምግብ ነክ ያልሆኑ የወጪ ድርሻ መጠነኛ እድገት አሳይታል።

የሰኔ ወር 2001 ዓ.ም. የዋጋ ግሽበት ሁኔታ

ከሠንጠረዥ #ሐ; መረዳት እንደሚቻለው በሰኔ ወር 2001 ዓ.ም. የተመዘገበው አገራዊ አጠቃላይ የዋጋ ግሽበት 36.4 በመቶ ሲሆን ይህ አሀዝ በሰኔ 2000 ከታየው 25.3 በመቶ አጠቃላይ የዋጋ ግሽበት ጋር ሲነፃፀር በ11.1 ጭማሪ አሳይቷል። በተመሳሳይ ሁኔታ በሰኔ ወር 2001 ዓ.ም. የተመዘገበው አገራዊ የምግብ የዋጋ ግሽበት 44.2 በመቶ ሲሆን አገራዊ የምግብ ነክ ያልሆኑ የዋጋ ግሽበት ደግሞ 23.7 በመቶ ሆኗል። በሰኔ ወር 2001 ዓ.ም. የተመዘገበው 44.2 በመቶ የምግብ የዋጋ ግሽበት ከሰኔ 2000 ዓ.ም ከታየው 34.9 ጋር ሲነፃፀር በ9.3 ጭማሪ አሳይቷል። ለዚህም አገራዊ የምግብ የዋጋ ግሽበት መጨመር ምክንያት የሆኑት የተለያዩ የምግብ ክፍሎች ማለትም በእህል፣ በጥራጥሬ፣ በሥጋ፣ በአይብና ዕንቁላል፣ በአትክልትና ፍራፍሬ፣ በድንችና ሌሎች ሥራሥሮች፣ በሌሎች ምግቦች እና ከቤት ወጪ በተወሰዱ ምግቦች የዋጋ ኢንዱክሶች ላይ ጭማሪ በመከሰቱ ነው።

የ12 ወራት የምግብና የአጠቃላይ ተንቀሳቃሽ አማካይ የዋጋ ግሽበት ከመጋቢት ወር 2001 ዓ.ም ጀምሮ በተከታታይ ቅናሽ በማሳየት ላይ ይገኛል። ይኸውም በየካቲት ወር 2001 ዓ.ም አጠቃላይ ተንቀሳቃሽ የዋጋ ግሽበቱ 46.1 የነበረ ሲሆን በመጋቢት ወር 2001 ዓ.ም 45.2፣ በሚያዝያ ወር 2001 ዓ.ም በ44.3፣ በግንቦት ወር 2001 ዓ.ም በ41.6 በመቶ እና በሰኔ ወር 2001 ዓ.ም በ36.4 በመቶ ዝቅ ብሎአል። በተመሳሳይ ሁኔታ የምግብ ተንቀሳቃሽ አማካይ የዋጋ ግሽበትም በየካቲት ወር 2001 ዓ.ም ከነበረበት 61.1 በመቶ በመጋቢት ወር 2001 ዓ.ም ወደ 59.2 በመቶ፣ በሚያዝያ ወር 2001 ዓ.ም በ57.2 በመቶ፣ በግንቦት ወር 2001 ዓ.ም በ52.6 በመቶ እና በሰኔ ወር 2001 ዓ.ም በ44.2 በመቶ ዝቅ ማለቱ ተረጋግጦአል። ምግብ ነክ ያልሆኑ የኢንዱስትሪ ክፍሎች ካለፈው ወር ጋር ሲነጻጸር በ0.9 በመቶ ዝቅ ብሎአል። ከምግብ ክፍሎች አህል፣ አትክልትና ፍራፍሬ እና ስኳር ዋጋ ጭማሪ በማስመዘገብ ላይ የሚገኙ ሲሆን በተመሳሳይ ሁኔታ ምግብ ነክ ያልሆኑ የኢንዱስትሪ ክፍሎች ውስጥ ነዳጅ፣ የኮንስትራክሽን ዕቃዎች፣ ልብስና መጫሚያ፣ የቤት ዕቃዎችና የቤት ማስገጫዎች እና የግል ንጽህና ዕቃዎች ዋጋ ጨምሮአል። በቅርቡ የታየው የዋጋ ጭማሪ ግን ባለፈው ዓመት ከታየው ጭማሪ ጋር ሲነጻፀር የአሁኑ በጣም መቀነሱን ጠቋሚ አሃዙ ያመለክታል።

ሠንጠረዥ (መ) የሚያሳየው የዋጋ ግሽበት ሁኔታ ካለፈው ዓመት ተመሳሳይ ወር ጋር በማነፃፀር ነው። ከሠንጠረዥ ማየት እንደሚቻለው የሰኔ ወር 2001 ዓ.ም አጠቃላይ የዋጋ ግሽበት ካለፈው ዓመት ተመሳሳይ ወር ማለትም ከሰኔ ወር 2000 ዓ.ም ጋር ሲነጻጸር 2.7 ከመቶ ከፍ ያለ ሲሆን በግንቦት ወር 2001 ዓ.ም ከታየው 14.2 ከመቶ ጋር ሲተያይ የ11.5 ቅናሽ አሳይቷል። በተመሳሳይ ሁኔታ የምግብ ዋጋ ግሽበትም በግንቦት ወር 2001 ዓ.ም ከነበረበት 11.6 በመቶ በሰኔ ወር 2001 ዓ.ም ወደ -3.4 በመቶ ዝቅ በማለቱ የ15.0 ቅናሽ አሳይቶአል። ምግብ ነክ ያልሆኑ ክፍሎች የዋጋ ግሽበት የሰኔ ወር 2001 ዓ.ም ካለፈው ግንቦት ወር 2001 ዓ.ም ጋር ሲነጻጸር የ3.7 ቅናሽ አሳይቷል።

በተጨማሪም ከሠንጠረዥ (መ) ማየት እንደሚቻለው የሰኔ ወር 2001 ዓ.ም አጠቃላይ የዋጋ ግሽበት በሰኔ ወር 2000 ዓ.ም ከነበረበት 55.2 ከመቶ ወደ 2.7 ከመቶ ዝቅ ብሎአል። ለአጠቃላይ ዋጋ ግሽበቱ መቀነስ ዋናው ምክንያት በምግብ ክፍሎች በተለይም በእህል ዋጋ ላይ ካለፈው ዓመት ሰኔ ወር ጋር ሲነጻጸር የታየው ቅናሽ ነው። በተመሳሳይ ሁኔታ የሰኔ ወር 2000 ዓ.ም የተመዘገበው 78.3 ከመቶ የምግብ ዋጋ ግሽበት በሰኔ ወር 2001 ዓ.ም ወደ -3.4 ከመቶ ዝቅ ማለቱ ታውቆአል። በሌላ አባባል በሰኔ 2001 ዓ.ም የተመዘገበው 188.6 ከመቶ የምግብ ዋጋ መመዘኛ ኢንዱስትሪ በሰኔ ወር 2000 ዓ.ም ከተመዘገበው 192.2 ከመቶ የምግብ ዋጋ መመዘኛ ኢንዱስትሪ አንሶ በመገኘቱ ነው።

June 2009 Inflation Rate

As it is indicated in Table 'C' below the country level overall inflation rate (annual change based on 12 months Moving Average) stood at 36.4 percent in June 2009. This rate is 11.1 percentage points higher than the corresponding annual average rate of 25.3 percent at June 2008. Similarly, the country level food inflation rate stood at 44.2 percent and the country level Non-food inflation rate stood at 23.7 percent in June 2009. The 44.2 percent Country level food inflation rate in June 2009 is 9.3 percentage points higher than that of 34.9 percent inflation rate at June 2008. This higher increase in the Food inflation rate was due to the increase in price indices of the Food components like Cereals, Pulses, Meat, Milk and egg, Vegetable and fruits, Potatoes & Other Tubers and Stems, Other food Items and food taken away from home.

The 12 months moving average General and Food inflation showed a decline starting in March 2009 and continued the trend in June 2009. In this regard the General moving average inflation rate was 46.1 in February 2009 and consequently declined to 45.2 percent in March 2009, 44.3 in April 2009, 41.6 in May 2009 and 36.4 in June 2009. In a similar way the Food moving average inflation rate was declined from 61.1 percent in February 2009 to 59.2 percent in March 2009, 57.2 percent in April 2009, 52.6 percent in May 2009 and 44.2 in June 2009. The Non-food components of the Index declined by 09 percent as compared to the one observed last month. From the food components, the prices of Cereals, Fruits and Vegetables and Sugar are on the rise. Among the non-food components, the prices of Fuel, Construction materials, clothing and footwear, Furniture and furnishing and Personal care and effects are increasing. However, as the figures indicate the increase in prices in recent months is much lower than the situation observed last year.

Table (D) shows Inflation rate based on last year's similar month comparison. As can be seen from the table the June 2009 General year-on-year inflation was 2.7 percent and it is less than the one observed in May 2009 which was 14.2 Percent showing a decline by 11.5 percentage points. Similarly, the year-on-year Food inflation declined from 11.6 percent in May 2009 to -3.4 percent in June 2009 which declined by 15.0 percentage points. The Non-Food inflation decreased by 3.7 points in June 2009 as compared to the one observed in May 2009.

As can be seen from Table (D), the June 2009 General inflation rate has declined to 2.7 percent as compared to the 55.2 percent observed in June 2008. The main reason for the fall in general inflation was due to the decrease in the price of food components mainly cereals as compared to similar month of June in the previous year. Similarly, the 78.3 percent Food inflation rate observed in June 2008 has declined to -3.4 percent in June 2009. In other words, the 188.6 percent Food Consumer price Index (CPI) observed in June 2009 was less than the corresponding 192.2 percent Food Consumer Price Index (CPI) observed in June 2008.

ሠንጠረዥ ሐ: በአገር አቀፍ ደረጃ የዋጋ ግሽበት ሁኔታ

Table C: The Country Level General Inflation Rate

በጀት ዓመት (ወር)	የዋጋ ግሽበት ሁኔታ			Budget Year and months
	አጠቃላይ የዋጋ ግሽበት	የምግብ ግሽበት	የምግብ ያልሆኑ ግሽበት	
የ2000 በጀት ዓመት በወራት				The 2007/8 Budget Year in Months
ዓመታዊ አማካይ (ሐምሌ 1999 - ሰኔ 2000)	18.4	23.6	11.6	Annual Average (July 2007 – June 2008)
ዓመታዊ አማካይ (ሐምሌ 2000 - ሰኔ 2001)	40.6	54.1	21.0	Annual Average (July 2008 – June 2009)
ሰኔ 2000	25.3	34.9	12.5	June 2008
ሐምሌ 2000	29.6	41.3	13.8	July 2008
ነሐሴ 2000	33.6	46.9	15.4	August 2008
መስከረም 2001	37.2	51.8	17.0	September 2008
ጥቅምት 2001	40.3	55.7	18.8	October 2008
ኅዳር 2001	42.8	58.7	20.4	November 2008
ታህሳስ 2001	44.4	60.0	21.9	December 2008
ጥር 2001	45.6	60.9	23.4	January 2009
የካቲት 2001	46.1	61.1	24.2	February 2009
መጋቢት 2001	45.2	59.2	24.4	March 2009
ሚያዝያ 2001	44.3	57.2	24.6	April 2009
ግንቦት 2001	41.6	52.6	24.6	May 2009
ሰኔ 2001	36.4	44.2	23.7	June 2009
Budget Year	Inflation Rate			
	Overall Inflation rate	Food Inflation rate	Non-food Inflation rate	

Revised (From January 2007 – November 2007)

ሠንጠረዥ መ: የዘንድሮውና የአምናው ተመሳሳይ ወሮች የሽማግብት ዋጋ መመዘኛ ኢንዱስትሪ ለውጥ ንፅፅር በአገር አቀፍ ደረጃ ማጠቃለያ

Table D: Summary of Comparison of CPI Movements, Current vs. Last year's Similar Months at Country Level

በጀት ዓመት (ወር)	የዋጋ ግሽበት ሁኔታ ካለፈው ዓመት ተመሳሳይ ወር ጋር ሲነፃፀር			Budget Year and months
	አጠቃላይ የዋጋ ግሽበት	የምግብ የዋጋ ግሽበት	የምግብ ነክ ያልሆኑ የዋጋ ግሽበት	
የ2000 በጀት ዓመት በወራት				The 2007/8 Budget Year in Months
ዓመታዊ አማካይ (ሐምሌ 1999 - ሰኔ 2000)	24.9	34.2	12.3	Annual Average (July 2007 - June 2008)
ዓመታዊ አማካይ (ሐምሌ 2000 - ሰኔ 2001)	38.7	48.6	24.1	Annual Average (July 2008 - June 2009)
ሰኔ 2000	55.2	78.3	23.2	June 2008
ሐምሌ 2000	64.2	91.7	24.9	July 2008
ነሐሴ 2000	61.7	85.0	27.1	August 2008
መስከረም 2001	59.6	80.9	27.3	September 2008
ጥቅምት 2001	55.4	72.3	29.5	October 2008
ኅዳር 2001	49.4	63.3	28.2	November 2008
ታህሳስ 2001	39.3	46.7	27.9	December 2008
ጥር 2001	37.8	44.8	27.0	January 2009
የካቲት 2001	32.8	38.9	23.5	February 2009
መጋቢት 2001	23.7	26.5	19.2	March 2009
ሚያዝያ 2001	23.4	25.4	20.3	April 2009
ግንቦት 2001	14.2	11.6	18.7	May 2009
ሰኔ 2001	2.7	-3.4	15.0	June 2009
Budget Year	Inflation Rate based on last year's similar month comparison			
	Overall Inflation rate	Food Inflation rate	Non-food Inflation rate	

Revised (From January 2007 – November 2007)

የዘንድሮውና የአምናው ተመሳሳይ ወሮች የችርቻሮ ዋጋ መመዘኛ ጠቋሚ አሀዝ ንፅፅር በአገር አቀፍ ደረጃ

Comparison of CPI Movements, Current vs Last year's Similar Months at Country Level

ከሠንጠረዥ 1(ሀ) መረዳት እንደሚቻለው የሰኔ ወር 2001 ዓ.ም የአገር አቀፍ ጠቅላላ የችርቻሮ ዋጋ ኢንዱክስ ከሰኔ ወር 2000 ዓ.ም ጠቅላላ ኢንዱክስ ጋር ሲነፃፀር በ2.7 ከመቶ ዕድገት አሳይቶአል። ለዚህ ዕድገት አስተዋጽኦ ያደረጉት መጠጥ በ25.3 ከመቶ፣ ሲጋራና ትምባሆ 32.7 ከመቶ፣ ልብስና መጫሚያ በ28.0 ከመቶ፣ የቤት ኪራይ፣ የቤት መሥሪያ ዕቃዎች፣ ወሃና ኢነርጂ በ8.8 ከመቶ፣ የቤት ዕቃዎች፣ ቤት ማስገጫዎች፣ የቤት ቁሳቁስና የቤት ሠራተኛ ደመወዝ በ17.4 ከመቶ፣ ህክምና 15.9 ከመቶ፣ ትራንስፖርትና መገናኛ በ3.0 ከመቶ፣ መዝናኛና ትምህርት በ17.8 ከመቶ፣ የግል ንጽህናና የግል ቋሚ ዕቃዎች በ24.3 ከመቶ እና ሌሎች ዕቃዎች በ9.9 ከመቶ በየኢንዱስትሪቸው ላይ ጭማሪ በማሳየታቸው ነው። በሌላ በኩል ምግብ በ3.4 ከመቶ በኢንዱስትሪ ላይ ቅናሽ አሳይቶአል።

ሠንጠረዥ 1(ለ) እንደሚያሳየው ለጠቅላላ ምግብ ኢንዱክስ 3.4 ከመቶ መቀነስ ምክንያት የሆኑት የምግብ ክፍሎች ማለትም እህል በ10.8 ከመቶ፣ ዘይትና ቅባቶች በ11.2 ከመቶ እና ቅመማ ቅመም በ61.2 ከመቶ በኢንዱስትሪቸው ላይ ቅናሽ በማሳየታቸው ነው። በሌላ በኩል ጥራጥሬ በ5.4 ከመቶ፣ ዳቦና ሌሎች የተዘጋጁ ምግቦች በ17.2 ከመቶ፣ ሥጋ በ9.4 ከመቶ፣ ወተት፣ አይብና ዕንቁላል በ24.2 ከመቶ፣ አትክልትና ፍራፍሬ በ38.3 ከመቶ፣ ድንችና ሌሎች ስራ ስሮች በ15.8 ከመቶ፣ ያልተቀላ ቡናና ሻይ ቅጠል በ5.9 ከመቶ፣ ሌሎች ምግቦች በ44.9 ከመቶ፣ የማስፈጫ አገልግሎት በ13.4 ከመቶ እና ከቤት ወጪ የተወሰዱ ምግቦች በ17.7 ከመቶ ዕድገት በየኢንዱስትሪቸው ላይ አሳይተዋል።

በተጨማሪም ከሠንጠረዥ (መ) ማየት እንደሚቻለው የሰኔ ወር 2001 ዓ.ም አጠቃላይ የዋጋ ግሽበት በሰኔ ወር 2000 ዓ.ም ከነበረበት 55.2 ከመቶ ወደ 2.7 ከመቶ ዝቅ ብሎአል። ለአጠቃላይ ዋጋ ግሽበቱ መቀነስ ዋናው ምክንያት በምግብ ክፍሎች በተለይም በእህል ዋጋ ላይ ካለፈው ዓመት ሰኔ ወር ጋር ሲነጻጸር የታየው ቅናሽ ነው። በተመሳሳይ ሁኔታ የሰኔ ወር 2000 ዓ.ም የተመዘገበው 78.3 ከመቶ የምግብ ዋጋ ግሽበት በሰኔ ወር 2001 ዓ.ም ወደ -3.4 ከመቶ ዝቅ ማለቱ ታውቋል። በሌላ አባባል በሰኔ 2001 ዓ.ም የተመዘገበው 188.6 ከመቶ የምግብ ዋጋ መመዘኛ ኢንዱክስ በሰኔ ወር 2000 ዓ.ም ከተመዘገበው 192.2 ከመቶ የምግብ ዋጋ መመዘኛ ኢንዱክስ አንሶ በመገኘቱ ነው።

The June 2009 Country Level Consumer Price Index has increased by 2.7 percent as compared to June 2008 (Table 1(a)). This increase was attributed to the rise in the indices of its components; namely: Beverages by 25.3 percent, Cigarettes and Tobacco by 32.7 percent, Clothing and Footwear by 28.0 percent, House Rent, Construction Materials, Water and Fuel and Power by 8.8 percent, Furniture, Furnishings, Household Equipment and Operation by 17.4 percent, Medical Care and Health by 15.9 percent, Transport and Communication by 3.0 percent, Recreation, Entertainment and Education by 17.8 percent, Personal Care Effects by 24.3 percent and Miscellaneous Goods by 9.9 percent. On the other hand, the Food index has declined by 3.4 percent.

The 3.4 percent decline in the Food index was observed due to the fall in the indices of the components of Food index (Table 1(b)) namely: Cereals by (10.8 percent), oils and Fats (11.2 percent) and Spices by (61.2 percent).. On the other hand, rises were observed in the indices of Pulses (5.4 percent), Bread and Other Prepared Food (17.2 percent), Meat (9.4 percent), Milk, Cheese and Eggs (24.2 percent), Vegetables and fruits (38.3 percent), Potatoes, Other Tubers and Stems (15.8 percent), Coffee and Tea Leaves (5.9 percent), other Food Items (44.9 percent), Milling Charge by (13.4 percent), and Food Taken Away from Home (17.7 percent) respectively.

As can be seen from Table (D), the June 2009 General inflation rate has declined to 2.7 percent as compared to the 55.2 percent observed in June 2008. The main reason for the fall in general inflation was due to the decrease in the price of food components mainly cereals as compared to similar month of June in the previous year. Similarly, the 78.3 percent Food inflation rate observed in June 2008 has declined to -3.4 percent in June 2009. In other words, the 188.6 percent Food Consumer price Index (CPI) observed in June 2009 was less than the corresponding 192.2 percent Food Consumer Price Index (CPI) observed in June 2008.

**የዘንድሮውና የአምናው ተመሳሳይ ወሮች
የችርቻሮ ዋጋ መመዘኛ ጠቋሚ አሀዝ ንፅፅር በአገር አቀፍና በክልሎች ደረጃ**
Comparison of CPI Movements, Current vs Last year at Country and
Regional Levels

ከሠንጠረዥ 2(ሀ) መረዳት እንደሚቻለው የሴኔ ወር 2001 ዓ.ም የአገር አቀፍ ጠቅላላ የችርቻሮ ዋጋ መመዘኛ ኢንዱክስ ከሴኔ ወር 2000 ዓ.ም ጠቅላላ ኢንዱክስ ጋር ሲነፃፀር በ2.7 ከመቶ ዕድገት አሳይቶአል። ለዚህ ዕድገት አስተዋጽኦ ያደረጉት አዲስ አበባ 7.3 ከመቶ፣ አፋር 5.8 ከመቶ፣ አማራ 1.1 ከመቶ፣ ቤኔሻንጉል ጉሙዝ 6.9 ከመቶ፣ ድሬዳዋ 11.1 ከመቶ፣ ጋምቤላ 18.3 ከመቶ፣ ሐረሪ 11.9 ከመቶ፣ ኦሮሚያ 3.3 ከመቶ፣ ሶማሌ 18.5 ከመቶ እና ትግራይ 1.6 ከመቶ በጠቅላላ ኢንዱክሶቻቸው ላይ ጭማሪ በማሳየታቸው ነው። በሌላ በኩል ደቡብ ብሄሮች፣ ብሄረሰቦችና ሕዝቦች በ1.2 ከመቶ በኢንዱክሱ ላይ ቅናሽ አሳይቶአል።

Table 2(a) also displays that the June 2009 Country level General Consumer Price Index has increased by 2.7 percent as compared to June 2008. This increase was attributed to the rise in the indices of its constituent regions; namely: Addis Ababa 7.3 percent, Afar 5.8 percent, Amhara 1.1 percent, Benishangul Gumuz 6.9 percent, Dire Dawa 11.1 percent, Gambela 18.3 percent, Harari 11.9 percent, Oromia 3.3 percent, Somali 18.5 percent and Tigray 1.6 percent. On the other hand a decline was observed in the index of SNNP by 1.2 percent.

ሠንጠረዥ 2(ለ) እንደሚያሳየው አገር አቀፍ ጠቅላላ የምግብ ዋጋ መመዘኛ ኢንዱክስ 3.4 ከመቶ መቀነስ ምክንያት የሆኑት አማራ በ4.5 ከመቶ፣ ኦሮሚያ 3.2 ከመቶ፣ ደቡብ ብሄሮች፣ ብሄረሰቦችና ሕዝቦች 8.7 ከመቶ፣ እና ትግራይ 6.2 ከመቶ በኢንዱክሶቻቸው ላይ ቅናሽ በማሳየታቸው ነው። በሌላ በኩል አዲስ አበባ በ3.0 ከመቶ፣ አፋር 5.1 ከመቶ፣ ቤኔሻንጉል ጉሙዝ በ2.4 ከመቶ፣ ድሬዳዋ በ9.7 ከመቶ፣ ጋምቤላ በ16.2 ከመቶ፣ ሐረሪ በ8.0 ከመቶ እና ሶማሌ በ19.1 ከመቶ በየኢንዱክሶቻቸው ላይ ጭማሪ አሳይተዋል።

Table 2(b) reveals that the 3.4 percent decrease in the country level Food index was observed due to the fall in the indices of the regions namely: Amhara 4.5 Oromia 3.2 percent, SNNP 8.7 percent, and Tigray 6.2 percent. On the other hand an increase was observed in the indices of Addis Ababa 3.0 percent, Afar 5.1 percent, Benishangul Gumuz 2.4 percent, Dire Dawa 9.7 percent, Gambela 16.2 percent, Harari 8.0 percent, and Somali 19.1 percent respectively.

ሠንጠረዥ 1ሀ- ጠቅላላ የ ሽግግር ዋጋ መዘመን ሊንደክስ በሥራ የተሳተፉ ክፍሎች በአገር አቀፍ ደረጃ
 ታህሳስ 1999 = 100

Table 1a: General Consumer Price Index and Its Components at Country Level
 December 2006 = 100

ወርና ዓመት	ጠቅላላ ሊንደክስ General Index	ጠቅላላ የምግብ ሊንደክስ Food Total	ጠቅላላ የምግብ ክፍል ሊንደክስ Non-Food Total	Non-food Consumer Price Index Components											Month and Year	
				መጠጥ Beverages	ሊጃራና ትምባህ Cigarettes and Tobacco	ልብና መጫሪያ Clothing and Footwear	የቤት ኪራይ የቤት መሥሪያ ስቃዎችናውሃ ነጻጅናየይል House Rent, Construction Materials, Water, and Fuel and Power	የቤት ስቃዎች የቤት ግዝጊታዎች የቤት ቁሳቁስና የቤት ሠራተኛ ደመወዝ Furniture, Furnishings, Household Equipment and Operation	ልክና ጤና Medical Care and Health	ትራንስፖርትና መገናኛ Transport and Communication	መዝናኛና ትምህርት Recreation, Entertainment and Education	የገልጽ ጽጌ ስቃዎች Personal Care and Effects	ሌሎች ስቃዎች Miscellaneous Goods			
ታህሳስ 1999	100.0	100.0	100.0	100.0	100.0	100.0	100.0	100.0	100.0	100.0	100.0	100.0	100.0	100.0	100.0	December 2006
ሐምሌ 1999 - ሰኔ 2000	126.9	137.2	113.3	113.5	107.8	117.0	112.0	125.5	111.9	105.3	106.9	112.6	104.7	104.7	104.7	July 2007 - June 2008
ሐምሌ 2000 - ሰኔ 2001	173.1	198.0	140.1	175.8	141.2	149.8	136.6	159.8	128.1	112.8	124.9	142.2	115.5	115.5	115.5	July 2008 - June 2009
2000																2007/2008
መጋቢት 2000	135.2	146.9	119.6	118.8	119.9	121.0	119.5	135.4	114.2	112.3	110.2	118.3	106.2	106.2	106.2	March "
ጊያዝያ 2000	137.2	149.8	120.5	120.5	114.0	121.9	120.3	138.0	116.1	112.0	111.0	120.6	106.8	106.8	106.8	April "
ጥንቅት 2000	147.8	166.3	123.3	126.9	115.9	126.5	122.4	141.7	117.3	112.0	110.4	126.4	108.8	108.8	108.8	May "
ሰኔ 2000	166.7	195.2	128.8	144.7	118.4	129.5	129.8	145.1	119.9	112.1	113.1	127.7	109.9	109.9	109.9	June "
2001																2008/2009
ሐምሌ 2000	179.9	216.6	131.2	166.9	125.5	131.6	130.5	148.4	120.8	112.1	115.4	131.3	111.8	111.8	111.8	July 2008
ክለሌ 2000	182.3	218.5	134.3	171.6	131.2	135.9	133.5	151.4	122.6	112.1	118.3	134.3	113.3	113.3	113.3	August "
መስከረም 2001	184.1	220.6	135.5	173.8	131.4	138.8	133.8	153.2	124.0	112.2	120.1	134.8	116.1	116.1	116.1	September "
ጥቅምት 2001	182.0	214.3	139.2	176.3	132.6	141.7	138.2	155.6	125.7	124.2	121.4	134.5	115.0	115.0	115.0	October "
ገብር 2001	175.1	202.2	139.2	175.2	133.5	146.6	136.1	157.2	125.8	120.0	123.6	138.0	115.0	115.0	115.0	November "
ታህሳስ 2001	165.0	184.3	139.4	174.3	136.0	148.6	136.7	157.5	124.8	113.6	124.0	137.2	113.6	113.6	113.6	December "
ጥር 2001	165.6	185.3	139.5	177.0	139.7	150.4	136.3	158.1	126.3	109.0	124.8	138.6	113.4	113.4	113.4	January 2009
ፀደቅት 2001	167.1	186.1	141.8	178.1	148.1	156.4	137.0	163.5	128.1	107.5	126.4	144.4	114.3	114.3	114.3	February "
መጋቢት 2001	167.2	185.9	142.5	177.4	151.9	158.4	136.5	165.1	131.8	107.7	128.7	148.4	116.3	116.3	116.3	March "
ጊያዝያ 2001	169.2	187.8	144.6	178.7	153.1	160.8	139.0	167.7	132.3	108.3	131.0	152.3	116.9	116.9	116.9	April "
ጥንቅት 2001	168.8	185.6	146.4	178.9	154.9	162.8	140.6	169.3	136.1	111.3	131.7	153.2	119.6	119.6	119.6	May "
ሰኔ 2001	171.2	188.6	148.0	181.3	157.1	165.7	141.2	170.3	139.0	115.5	133.2	158.8	120.8	120.8	120.8	June "
	2.7	-3.4	14.9	25.3	32.7	28.0	8.8	17.4	15.9	3.0	17.8	24.3	9.9	9.9		

ጠቅላላ የ አጠቃላይ ግብዓት ደረጃ ለግብዓት ደረጃ በአገር አቀፍ እና በክልሎች ደረጃ
 ታህሳስ 1999 = 100

Table 2a: Summary of General Consumer Price Indices at Country and Regional Levels
 December 2006=100

ወርና ዓመት	Reporting Level													Month and Year
	Eth.	A.A.	Afar	Amhara	B.Gumuz	D.Dawa	Gambela	Harari	Oromia	SNNP	Somalia	Tigray		
ታህሳስ 1999	100.0	100.0	100.0	100.0	100.0	100.0	100.0	100.0	100.0	100.0	100.0	100.0	100.0	December 2006
ሐምሌ 1999 - ሰኔ 2000	126.9	121.8	124.3	127.8	137.7	125.6	123.7	119.1	129.0	125.6	118.5	130.1	183.0	July 2007 - June 2008
ሐምሌ 2000 - ሰኔ 2001	173.1	157.6	158.4	172.1	193.9	167.6	193.2	169.5	179.5	173.9	170.8	183.0	173.0	July 2008 - June 2009
2000														2007/2008
መጋቢት 2000	135.2	129.7	126.8	131.2	148.0	132.8	125.9	123.6	139.4	135.9	125.3	137.7	137.0	March "
ሚያዝያ 2000	137.2	130.3	128.2	132.5	146.9	135.1	123.6	127.5	141.9	139.1	127.3	139.7	137.0	April "
ጥንቅት 2000	147.8	140.0	140.9	144.7	151.9	143.2	137.9	144.4	154.6	148.0	136.4	146.6	137.0	May "
ሰኔ 2000	166.7	149.8	150.2	162.8	176.1	153.4	161.9	156.2	173.1	174.7	151.5	173.0	137.0	June "
2001														2008/2009
ሐምሌ 2000	179.9	155.4	162.3	180.5	201.4	160.4	197.8	163.7	188.3	184.1	167.8	187.5	187.5	July 2008
ኔሐሴ 2000	182.3	156.6	164.4	182.5	212.9	167.9	217.2	170.1	190.4	185.3	174.6	192.7	192.7	August "
መስከረም 2001	184.1	157.9	165.1	185.1	218.6	168.4	218.0	171.6	190.9	187.5	178.2	199.3	199.3	September "
ጥቅምት 2001	182.0	160.8	164.6	185.1	204.7	169.8	219.7	173.6	187.9	181.1	175.1	198.5	198.5	October "
ግዳር 2001	175.1	159.7	159.2	179.9	200.6	167.4	194.6	169.4	179.8	172.3	170.1	187.8	187.8	November "
ታህሳስ 2001	165.0	155.0	152.1	166.5	186.9	166.5	180.9	166.1	168.2	164.9	154.8	177.8	177.8	December "
ጥር 2001	165.6	153.2	152.3	164.6	178.9	164.9	176.3	165.4	171.7	164.9	164.3	174.3	174.3	January 2009
ፀደቅ 2001	167.1	155.0	153.8	164.8	181.3	167.8	178.5	169.5	173.6	166.2	169.9	174.8	174.8	February "
መጋቢት 2001	167.2	156.6	154.1	163.5	184.3	168.4	177.2	169.5	173.8	166.5	169.3	176.9	176.9	March "
ሚያዝያ 2001	169.2	159.0	156.7	165.0	184.5	169.5	180.5	170.1	175.5	170.3	171.9	178.0	178.0	April "
ጥንቅት 2001	168.8	160.6	156.9	163.4	184.4	169.7	186.2	170.6	174.9	171.1	173.5	173.1	173.1	May "
ሰኔ 2001	171.2	160.8	158.9	164.5	188.3	170.5	191.6	174.7	178.8	172.6	179.5	175.8	175.8	June "
	2.7	7.3	5.8	1.1	6.9	11.1	18.3	11.9	3.3	-1.2	18.5	17.6	17.6	

ወንጠረኝ 3 ሀ፡- ጠቅላላ የሽግግር ዋጋ መመዘኛ ኢንዱስትሪ ቢሮ የተካተቱ ክፍሎች ለአዲስ አበባ ከተማ መስተዳድር
 ታህሳስ 1999 = 100

Table 3a: General Consumer Price Index and Its Components for Addis Ababa City Administration
 December 2006 = 100

ወርና ዓመት	ጠቅላላ ኢንዱስትሪ	ጠቅላላ የምግብ ኢንዱስትሪ	ጠቅላላ የምግብ ክፍል ኢንዱስትሪ	Non-food Consumer Price Index Components											Month and Year
				መጠን	ቢዳራና ትምህርት	ላብሳና መጫዊያ	የቤት ኪራይ፣ የቤት መሥሪያ ስቃዎች፣ውሃ፣ ነጻጅናጥይል	የቤት ስቃዎች የቤት ግንባታዎች የቤት ተሳታፊዎች የቤት ሠራተኛ ደመወዝ	ሕክምና	ትራንስፖርትና ጠናኛ	መዘናኛና ትምህርት	የግል ገንባታና የግል ጽጌ ስቃዎች	ሌሎች ስቃዎች		
General Index	Food Total	Non-Food Total	Beverages	Cigarettes and Tobacco	Clothing and Footwear	House Rent, Construction Materials, Water, and Fuel and Power	Furniture, Furnishings, Household Equipment and Operation	Medical Care and Health	Transport and Communication	Recreation, Entertainment and Education	Personal Care and Effects	Miscellaneous Goods			
ታህሳስ 1999	100.0	100.0	100.0	100.0	100.0	100.0	100.0	100.0	100.0	100.0	100.0	100.0	100.0	December 2006	
ሐምሌ 1999 - ሰኔ 2000	121.8	134.8	112.8	127.4	108.7	127.9	106.2	132.3	124.3	102.3	104.4	118.6	104.7	July 2007 - June 2008	
ሐምሌ 2000 - ሰኔ 2001	157.6	190.7	134.5	177.8	156.8	164.4	120.6	165.7	145.3	114.9	121.7	146.6	124.8	July 2008 - June 2009	
2000														2007/2008	
መጋቢት 2000	129.7	142.6	120.7	134.8	121.3	136.1	114.1	146.7	132.5	109.2	107.6	127.1	106.1	March "	
ሚያዝያ 2000	130.3	143.2	121.4	134.2	117.3	136.2	115.2	147.5	131.4	108.4	110.1	129.5	107.6	April "	
ግንቦት 2000	140.0	163.5	123.7	143.6	118.6	138.8	117.3	153.3	132.4	108.4	110.5	132.4	110.9	May "	
ሰኔ 2000	149.8	183.9	126.2	153.8	118.6	143.9	119.7	156.0	133.1	108.5	110.3	136.5	115.1	June "	
2001														2008/2009	
ሐምሌ 2000	155.4	195.2	127.7	174.1	127.9	148.3	119.7	155.6	145.6	108.3	108.5	139.5	117.0	July 2008	
ነሐሴ 2000	156.6	197.5	128.2	174.4	129.7	151.3	118.7	157.7	141.4	108.4	109.3	139.5	121.7	August "	
መስከረም 2001	157.9	198.8	129.4	178.1	129.2	155.6	118.6	160.0	141.0	108.4	112.7	140.0	121.6	September "	
ጥቅምት 2001	160.8	196.8	135.8	177.4	129.0	158.1	126.6	161.7	145.8	123.9	114.8	140.9	121.5	October "	
ኅዳር 2001	159.7	194.8	135.3	177.7	144.3	160.0	121.8	165.9	145.8	122.3	119.7	144.0	121.6	November "	
ታህሳስ 2001	155.0	184.8	134.4	174.7	163.6	162.9	121.1	163.5	145.2	116.4	124.2	142.0	121.8	December "	
ጥር 2001	153.2	181.9	133.3	174.3	172.0	164.5	118.5	164.7	145.9	113.0	123.9	143.0	123.1	January 2009	
የካቲት 2001	155.0	183.4	135.2	178.3	179.0	169.8	119.1	168.5	144.1	113.0	127.0	148.1	123.1	February "	
መጋቢት 2001	156.6	186.0	136.2	179.4	183.1	172.5	119.2	170.5	145.9	113.0	128.8	152.1	121.3	March "	
ሚያዝያ 2001	159.0	189.4	137.9	181.5	180.2	178.1	119.6	172.2	146.1	112.9	130.1	155.0	132.1	April "	
ግንቦት 2001	160.6	191.0	139.5	180.9	170.3	176.7	121.2	174.2	148.6	117.4	131.3	156.2	134.4	May "	
ሰኔ 2001	160.8	189.3	140.9	182.6	173.5	175.0	123.0	173.6	148.0	122.0	130.6	158.8	139.1	June "	

ሠንጠረዥ 4a፡- ጠቅላላ የ ሽንጃቸ ዋጋ መጠነኛ ኢንዱክስ በሥነ የተከተቱ ክፍሎች ለላዕረ ክልል መገንጠት ታህሳስ 1999 = 100

Table 4a: General Consumer Price Index and Its Components for the Afar Regional State December 2006 = 100

ወርና ዓመት	ጠቅላላ ኢንዱክስ General Index	ጠቅላላ ምግብ ኢንዱክስ Food Total	ጠቅላላ ምግብ ካልሆኑ ኢንዱክስ Non-Food Total	ምግብ ካልሆኑ የኢንዱክስ ክፍሎች Non-food Consumer Price Index Components											Month and Year	
				መጠን Beverages	ሲጃራና ትምብዋ Cigarettes and Tobacco	ልብና መጫዊያ Clothing and Footwear	የቤት ኪራይ የቤት መሥሪያ ስቃዎች+ውሃ ነጻጅናሃይል House Rent, Construction Materials, Water, and Fuel and Power	የቤት ስቃዎች የቤት ግዝጊጫዎች የቤት ተሳታፊነት የቤት ሠራተኛ ደመወዝ Furniture, Furnishings, Household Equipment and Operation	ሕክምና Medical Care and Health	ትራንስፖርትና መገናኛ Transport and Communication	መዝናኛና ትምህርት Recreation, Entertainment and Education	የገልጻህና የገልጻህ ስቃዎች Personal Care and Effects	ሌሎች ስቃዎች Miscellaneous Goods			
ታህሳስ 1999	100.0	100.0	100.0	100.0	100.0	100.0	100.0	100.0	100.0	100.0	100.0	100.0	100.0	100.0	100.0	December 2006
ሐምሌ 1999 - ሰኔ 2000	124.3	136.1	110.2	109.2	102.5	114.5	107.3	113.8	109.6	109.7	124.4	92.2	107.2	101.5	106.9	July 2007 - June 2008
ሐምሌ 2000 - ሰኔ 2001	158.4	189.5	121.3	136.1	131.5	130.9	110.0	143.4	109.7	112.6	107.8	122.5	106.9	106.9	106.9	July 2008 - June 2009
2000																2007/2008
መጋቢት 2000	126.8	137.9	113.6	109.0	106.1	117.7	109.3	122.1	100.6	130.8	95.8	109.2	102.6	102.6	102.6	March "
ሚያዝያ 2000	128.2	139.4	114.9	110.3	105.7	118.3	110.4	125.7	106.9	130.8	96.0	108.2	102.6	102.6	102.6	April "
ግንቦት 2000	140.9	161.9	115.9	111.5	107.0	119.2	111.7	127.8	102.3	130.3	95.3	110.7	102.6	102.6	102.6	May "
ሰኔ 2000	150.2	178.4	116.6	113.9	109.6	122.3	109.5	132.2	100.9	130.8	92.5	114.9	102.4	102.4	102.4	June "
2001																2008/2009
ሐምሌ 2000	162.3	198.7	119.1	132.3	118.0	123.6	112.3	135.6	89.2	130.8	95.3	118.6	104.4	104.4	104.4	July 2008
ኔሐሴ 2000	164.4	200.6	121.4	132.3	123.4	132.6	111.6	137.0	93.0	130.8	97.9	118.0	104.3	104.3	104.3	August "
መስከረም 2001	165.1	201.0	122.4	134.5	131.3	131.3	112.4	138.9	115.4	130.8	102.2	120.6	105.3	105.3	105.3	September "
ጥቅምት 2001	164.6	200.0	122.4	129.7	132.5	129.4	112.9	139.3	116.3	133.1	104.4	121.1	106.6	106.6	106.6	October "
ጥር 2001	159.2	192.5	119.6	129.7	132.8	128.6	108.6	139.8	112.5	117.7	101.9	119.7	106.7	106.7	106.7	November "
ታህሳስ 2001	152.1	180.2	118.7	129.7	132.8	126.8	108.5	141.0	107.2	106.0	107.6	119.6	106.7	106.7	106.7	December "
ጥር 2001	152.3	180.1	119.4	129.7	136.8	131.6	107.8	141.0	106.8	97.7	109.7	122.3	106.7	106.7	106.7	January 2009
የካቲት 2001	153.8	182.1	120.1	134.0	136.8	133.6	107.7	141.2	106.8	97.7	115.0	123.1	107.4	107.4	107.4	February "
መጋቢት 2001	154.1	181.5	121.5	137.9	133.9	134.0	108.0	146.6	115.5	97.7	116.1	125.4	108.6	108.6	108.6	March "
ሚያዝያ 2001	156.7	185.0	123.1	142.3	132.6	133.6	109.9	152.5	112.7	97.7	115.4	127.7	109.0	109.0	109.0	April "
ግንቦት 2001	156.9	185.3	123.1	149.6	132.6	134.7	107.5	154.4	114.2	103.4	115.5	125.4	109.6	109.6	109.6	May "
ሰኔ 2001	158.9	187.5	124.9	151.5	133.9	130.8	113.1	153.7	126.5	107.8	112.5	128.0	108.1	108.1	108.1	June "

ሠንጠረዥ 5ሀ- ጠቅላላ የ ሽግግር ዋጋ መመዘኛ አገልግሎት ቢሥሩ የተካተተ ክፍሎች ለአግራ ክልል መገንጠያ ታህሳስ 1999 = 100

Table 5a: General Consumer Price Index and Its Components for the Amhara Regional State
December 2006 = 100

ወርና ዓመት	ጠቅላላ አገልግሎት General Index	ጠቅላላ ምግብ አገልግሎት Food Total	ጠቅላላ ምግብ ነፃ ስጦታ አገልግሎት Non-Food Total	ምግብ ነፃ ስጦታ የአገልግሎት ክፍሎች Non-food Consumer Price Index Components											Month and Year
				መጠጥ Beverages	ሲጃራና ትቆጣሪ Cigarettes and Tobacco	ልብና መጫዊያ Clothing and Footwear	የቤት ኪራይ የቤት መሥሪያ ስቃዎች+ውሃ ነጻጅናሃይል House Rent, Construction Materials, Water, and Fuel and Power	የቤት ስቃዎች የቤት ግዝጊያዎች የቤት ተሳታፊዎች የቤት ሠራተኛ ደመወዝ Furniture, Furnishings, Household Equipment and Operation	ሕክምና Medical Care and Health	ትራንስፖርትና መገናኛ Transport and Communication	መዝናኛና ትምህርት Recreation, Entertainment and Education	የግል ጉልበትና ስቃዎች Personal Care and Effects	ሌሎች ስቃዎች Miscellaneous Goods		
ታህሳስ 1999	100.0	100.0	100.0	100.0	100.0	100.0	100.0	100.0	100.0	100.0	100.0	100.0	100.0	100.0	December 2006
ሐምሌ 1999 - ሰኔ 2000	127.8	139.6	108.4	112.4	115.8	109.5	105.8	120.9	112.8	106.6	108.2	117.8	101.6	103.4	July 2007 - June 2008
ሐምሌ 2000 - ሰኔ 2001	172.1	198.7	128.4	198.7	154.5	132.4	118.5	156.1	124.1	113.2	127.4	148.3	103.4	103.6	July 2008 - June 2009
2000															2007/2008
መጋቢት 2000	131.2	142.5	112.6	115.7	128.4	113.7	108.9	131.2	118.8	116.5	110.5	126.8	102.8	102.8	March "
ጊያዝያ 2000	132.5	145.0	111.9	117.4	127.1	111.8	107.9	131.0	124.0	116.5	112.8	127.0	103.3	103.3	April "
ግንቦት 2000	144.7	164.3	112.5	128.9	129.9	112.6	106.3	135.3	121.1	116.5	114.3	139.6	102.9	102.9	May "
ሰኔ 2000	162.8	190.4	117.3	146.6	131.3	115.7	112.0	139.1	122.6	116.4	114.2	138.2	102.8	102.8	June "
2001															2008/2009
ሐምሌ 2000	180.5	216.5	121.5	190.9	145.5	115.0	115.4	142.5	121.7	116.4	115.2	141.3	103.1	103.1	July 2008
ኔሐሴ 2000	182.5	218.0	124.2	199.5	141.2	121.1	117.0	144.1	121.3	116.4	118.1	144.3	103.2	103.2	August "
መስከረም 2001	185.1	221.4	125.5	202.5	145.7	122.6	117.5	149.6	116.6	116.6	121.7	147.8	103.2	103.2	September "
ጥቅምት 2001	185.1	220.9	126.2	201.4	147.0	125.4	118.4	147.1	118.0	122.1	122.1	139.4	103.2	103.2	October "
ጥር 2001	179.9	212.2	126.9	202.5	147.0	129.6	117.7	150.3	118.5	119.0	123.2	142.1	103.2	103.2	November "
ታህሳስ 2001	166.5	190.7	126.8	202.4	148.0	131.4	116.7	152.5	118.5	113.4	123.5	143.4	103.2	103.2	December "
ጥር 2001	164.6	187.8	126.6	201.3	147.7	132.8	115.6	155.6	123.2	107.8	124.0	144.5	103.2	103.2	January 2009
የካቲት 2001	164.8	185.9	130.0	199.1	152.8	136.7	119.2	162.1	123.9	108.2	130.5	148.1	103.2	103.2	February "
መጋቢት 2001	163.5	184.0	129.9	190.9	161.8	138.7	118.0	164.9	129.5	108.4	132.0	152.2	103.9	103.9	March "
ጊያዝያ 2001	165.0	184.5	133.0	197.1	169.1	143.1	120.7	167.3	128.6	108.4	136.8	158.0	103.7	103.7	April "
ግንቦት 2001	163.4	180.8	134.8	198.1	175.6	145.6	122.8	167.1	134.1	109.5	141.2	157.2	103.9	103.9	May "
ሰኔ 2001	164.5	181.9	136.0	198.7	172.1	146.9	123.7	169.7	135.4	112.6	140.4	161.7	103.9	103.9	June "

ወንጠራዥ ስህ- ጠቅላላ የ ሽንገሎች ዋጋ መጠኛ ሊገደብና በሥራ የተካተቱ ክፍሎች ለቤንሻንጉል ንድፍ ዘመን መገንጠት ታህሳስ 1999 = 100

Table 6a: General Consumer Price Index and Its Components for the Benishangul Gumuz Regional State
December 2006 = 100

ወርና ዓመት	ጠቅላላ ሊገደብ	ጠቅላላ የምግብ ሊገደብ	ጠቅላላ የምግብ ነፃ ሊገደብ	Non-food Consumer Price Index Components											Month and Year
				የምግብ ነፃ ያልሆኑ የሊገደብ ክፍሎች	መጠን	ቢዳራና ትምህርት	ላብስና መጫወያ	የቤት ኪራይ የቤት መሥሪያ ስቃዎች+ውሃ ነጻይናሃይል	የቤት ስቃዎች የቤት ግንባታዎች የቤት ተሳታፊዎች የቤት ሠራተኛ ደመወዝ	ሕክምና	ትራንስፖርትና ግንኙነት	መዘናኛና ትምህርት	የግል ንጽባናና የግል ጽግራ ስቃዎች	ሌሎች ስቃዎች	
General Index	Food Total	Non-Food Total	Beverages	Cigarettes and Tobacco	Clothing and Footwear	House Rent, Construction Materials, Water, and Fuel and Power	Furniture, Furnishings, Household Equipment and Operation	Medical Care and Health	Transport and Communication	Recreation, Entertainment and Education	Personal Care and Effects	Miscellaneous Goods			
ታህሳስ 1999	100.0	100.0	100.0	100.0	100.0	100.0	100.0	100.0	100.0	100.0	100.0	100.0	100.0	100.0	December 2006
ሐምሌ 1999 - ሰኔ 2000	137.7	148.2	123.7	111.2	113.2	123.8	141.3	114.6	111.0	101.0	112.2	115.2	103.3	103.3	July 2007 - June 2008
ሐምሌ 2000 - ሰኔ 2001	193.9	226.1	151.4	150.0	148.3	156.2	159.3	158.1	143.4	100.7	158.5	146.5	112.4	112.4	July 2008 - June 2009
2000															2007/2008
ጠቅላላ 2000	148.0	161.2	130.6	120.1	116.9	135.2	147.3	120.8	118.1	100.4	117.5	125.5	105.1	105.1	March "
ግንቦት 2000	146.9	160.0	129.6	121.1	119.5	136.1	143.3	120.0	120.1	100.4	118.5	129.5	104.2	104.2	April "
ግንቦት 2000	151.9	167.9	130.7	122.4	120.5	137.2	144.3	122.1	118.1	100.4	120.3	130.7	106.5	106.5	May "
ሰኔ 2000	176.1	206.4	136.1	123.3	125.2	138.6	152.2	134.1	123.8	100.4	119.7	134.8	107.6	107.6	June "
2001															2008/2009
ሐምሌ 2000	201.4	246.8	141.4	143.3	144.0	140.9	148.4	150.1	130.0	100.4	143.4	137.7	109.2	109.2	July 2008
ክሌሌ 2000	212.9	262.9	146.9	149.2	143.3	142.0	158.7	151.1	137.4	100.4	154.4	140.4	111.1	111.1	August "
መስከረም 2001	218.6	272.8	146.8	148.3	137.9	147.2	158.5	146.0	138.1	100.4	155.4	141.3	111.1	111.1	September "
ጥቅምት 2001	204.7	246.6	149.4	148.6	133.8	151.4	159.4	152.8	138.4	106.9	158.1	139.0	113.3	113.3	October "
ኅዳር 2001	200.6	237.8	151.5	149.5	140.1	160.8	157.6	157.2	140.6	106.9	158.4	143.4	114.4	114.4	November "
ታህሳስ 2001	186.9	215.0	149.8	148.2	140.0	159.3	152.2	161.1	140.0	106.7	158.8	141.6	116.3	116.3	December "
ጥር 2001	178.9	199.4	151.8	148.8	141.7	163.4	155.6	161.6	149.0	100.1	158.5	141.4	118.4	118.4	January 2009
ፕቅይት 2001	181.3	202.2	153.6	150.5	144.5	163.9	159.1	163.7	151.8	96.1	158.6	146.3	114.6	114.6	February "
ጠቅላላ 2001	184.3	206.8	154.7	150.7	163.1	162.1	161.8	163.2	150.0	96.1	161.7	153.5	113.6	113.6	March "
ግንቦት 2001	184.5	206.1	156.0	153.3	164.3	161.1	165.5	162.9	147.2	96.1	164.1	157.8	107.6	107.6	April "
ግንቦት 2001	184.4	205.1	157.0	154.1	164.8	161.8	167.6	162.7	149.5	96.1	165.5	157.3	107.6	107.6	May "
ሰኔ 2001	188.3	211.2	157.9	155.7	161.7	160.4	167.9	164.6	149.5	101.8	165.2	158.4	111.5	111.5	June "

ሠንጠረዥ 7ሀ:- ጠቅላላ የሽግግር ዋጋ መመዘኛ ኢንዱስትሪ ቢሥሩ የተካተቱ ክፍሎች ለድረጃ ለስተዳደር ካውንሳል ታህሳስ 1999 = 100

Table 7a: General Consumer Price Index and Its Components for the Dire Dawa Administrative Council December 2006 = 100

ወርና ዓመት	ጠቅላላ ኢንዱስትሪ General Index	ጠቅላላ የምግብ ኢንዱስትሪ Food Total	ጠቅላላ የምግብ ካልሆኑ ኢንዱስትሪ Non-Food Total	Non-food Consumer Price Index Components											Month and Year
				ምግብ ካልሆኑ የኢንዱስትሪ ክፍሎች Beverages	ሲጃራና ትምባሆ Cigarettes and Tobacco	ላብስና መጫጊያ Clothing and Footwear	የቤት ኪራይ የቤት መሥሪያ ስቃዎች፣ውሃ፣ ነጻጅናሃይል House Rent, Construction Materials, Water, and Fuel and Power	የቤት ስቃዎች የቤት ግንባታዎች የቤት ቀለቀለና የቤት ሠራተኛ ደመወዝ Furniture, Furnishings, Household Equipment and Operation	ሕክምና Medical Care and Health	ትራንስፖርትና ጠገናኛ Transport and Communication	መዝናኛና ትምህርት Recreation, Entertainment and Education	የገልጻለሁና የገልጻለሁ ስቃዎች Personal Care and Effects	ሌሎች ስቃዎች Miscellaneous Goods		
ታህሳስ 1999	100.0	100.0	100.0	100.0	100.0	100.0	100.0	100.0	100.0	100.0	100.0	100.0	100.0	100.0	December 2006
ሐምሌ 1999 - ሰኔ 2000	125.6	135.4	115.6	113.2	101.2	109.2	120.9	124.5	115.8	105.5	116.8	108.2	102.9	107.6	July 2007 - June 2008
ሐምሌ 2000 - ሰኔ 2001	167.6	199.5	134.7	158.5	113.0	128.2	140.9	157.9	138.8	102.3	136.1	119.5	107.6	107.6	July 2008 - June 2009
2000															2007/2008
ጠቅላላ 2000	132.8	146.2	119.0	118.2	100.7	110.8	122.8	132.3	123.2	109.9	120.2	109.9	106.3	106.3	March "
ጁላይ 2000	135.1	148.5	121.4	118.6	100.7	113.7	126.6	136.2	120.8	109.9	121.0	110.6	103.1	103.1	April "
ጥንቅት 2000	143.2	161.8	124.1	121.4	103.6	121.2	128.8	136.7	123.7	109.1	123.3	111.0	103.1	103.1	May "
ሰኔ 2000	153.4	180.5	125.6	124.5	103.6	115.6	136.7	140.3	124.1	105.4	123.4	111.1	104.6	104.6	June "
2001															2008/2009
ሐምሌ 2000	160.4	192.8	126.9	153.3	108.1	113.9	137.4	142.2	126.8	105.4	128.0	113.7	106.3	106.3	July 2008
ነሐሴ 2000	167.9	204.3	130.4	155.3	106.7	117.1	143.1	143.9	139.6	105.4	129.6	114.7	106.3	106.3	August "
መስከረም 2001	168.4	204.4	131.3	156.3	112.6	120.7	142.0	146.5	138.9	105.5	127.7	118.5	106.3	106.3	September "
ጥቅምት 2001	169.8	205.4	133.1	157.0	112.6	124.9	142.8	150.6	138.0	107.4	126.3	116.7	106.3	106.3	October "
ኅዳር 2001	167.4	200.7	133.2	157.0	108.6	126.4	139.7	154.6	138.0	100.7	137.5	118.5	106.3	106.3	November "
ታህሳስ 2001	166.5	197.8	134.2	157.0	112.6	129.3	139.1	156.2	138.2	99.2	141.7	119.4	106.3	106.3	December "
ጥር 2001	164.9	195.8	133.1	155.2	114.5	129.8	136.5	154.4	142.3	98.3	141.1	118.3	106.3	106.3	January 2009
የካቲት 2001	167.8	198.5	136.2	155.4	112.5	135.1	139.2	161.7	140.2	100.4	139.0	119.4	106.3	106.3	February "
ጠቅላላ 2001	168.4	199.5	136.5	162.7	112.6	130.6	139.2	166.7	141.2	100.6	140.0	123.0	106.3	106.3	March "
ጁላይ 2001	169.5	198.5	139.6	165.9	120.5	134.0	143.7	172.7	139.2	100.6	139.7	122.6	106.3	106.3	April "
ጥንቅት 2001	169.7	198.4	140.1	162.9	122.4	137.6	142.2	172.3	141.5	101.6	140.5	121.9	111.5	111.5	May "
ሰኔ 2001	170.5	198.0	142.2	163.9	112.6	138.6	146.5	173.2	140.9	102.3	141.7	127.6	116.7	116.7	June "

ሠንጠረዥ 8ሀ፡- ጠቅላላ የ ሽግግር ዋጋ መመዘኛ ኢንዱስትሪ ቢሮ የተተካ ክፍሎች ሲጋራዎች ስላሉት አላገደ መገገሙት ታህሳስ 1999 = 100

Table 8a: General Consumer Price Index and Its Components for the Gambela Peoples Regional State
December 2006 = 100

ወርና ዓመት	ጠቅላላ ኢንዱስትሪ	ጠቅላላ የምግብ ኢንዱስትሪ	ጠቅላላ የምግብ ክፍል ኢንዱስትሪ	Non-food Consumer Price Index Components											Month and Year
				የምግብ ክፍል	ቢዳራና ትምህርት	ላብስና መጫጫ	የቤት ኪራይ የቤት መሥሪያ ስቃዎች፣ውሃ ነጻጅናሃይል	የቤት ስቃዎች የቤት ግንባታዎች የቤት ቀለቀለና የቤት ሠራተኛ ደመወዝ	እኩምና	ትራንስፖርትና ጠናኛ	መዝናኛና ትምህርት	የግል ገንባታና የግል ጽግራ ስቃዎች	ሌሎች ስቃዎች		
	General Index	Food Total	Non-Food Total	Beverages	Cigarettes and Tobacco	Clothing and Footwear	House Rent, Construction Materials, Water, and Fuel and Power	Furniture, Furnishings, Household Equipment and Operation	Medical Care and Health	Transport and Communication	Recreation, Entertainment and Education	Personal Care and Effects	Miscellaneous Goods		
ታህሳስ 1999	100.0	100.0	100.0	100.0	100.0	100.0	100.0	100.0	100.0	100.0	100.0	100.0	0.0	December 2006	
ሐምሌ 1999 - ሰኔ 2000	123.7	133.8	111.2	120.8	107.8	108.3	107.6	123.5	116.4	105.9	108.4	103.5	0.0	July 2007 - June 2008	
ሐምሌ 2000 - ሰኔ 2001	193.2	226.8	151.5	193.5	134.2	140.8	145.5	173.5	130.6	112.4	138.6	114.1	0.0	July 2008 - June 2009	
2000														2007/2008	
መጋቢት 2000	125.9	134.4	115.3	126.0	115.1	114.2	108.0	134.5	119.5	114.1	112.3	103.3	0.0	March "	
ሚያዝያ 2000	123.6	131.4	113.8	125.4	109.8	112.5	108.1	128.9	119.6	114.1	110.0	102.6	0.0	April "	
ግንቦት 2000	137.9	151.6	120.8	126.7	110.2	116.9	117.6	152.9	120.9	114.1	111.8	103.6	0.0	May "	
ሰኔ 2000	161.9	189.6	127.4	126.9	115.8	122.7	127.2	164.8	122.6	114.1	115.4	107.0	0.0	June "	
2001														2008/2009	
ሐምሌ 2000	197.8	248.8	134.5	161.5	122.0	131.5	124.7	170.1	122.0	114.1	113.5	111.8	0.0	July 2008	
ክሌሌ 2000	217.2	276.8	143.2	161.5	127.0	137.4	141.3	177.1	123.3	114.1	111.8	114.7	0.0	August "	
መስከረም 2001	218.0	269.0	154.5	200.4	130.6	138.1	152.2	177.9	130.2	114.1	127.8	116.6	0.0	September "	
ጥቅምት 2001	219.7	271.2	155.6	200.4	132.3	142.0	152.9	176.2	130.2	114.1	130.7	116.0	0.0	October "	
ኅዳር 2001	194.6	224.5	157.5	205.4	132.3	146.4	152.9	176.6	130.2	114.1	142.3	114.7	0.0	November "	
ታህሳስ 2001	180.9	200.8	156.1	199.0	131.2	148.5	153.0	171.2	128.9	110.1	144.2	112.1	0.0	December "	
ጥር 2001	176.3	198.9	148.1	199.0	129.9	137.2	138.2	169.9	128.3	110.1	144.1	111.8	0.0	January 2009	
ፕላቲት 2001	178.5	198.5	153.6	199.0	133.9	141.6	148.1	174.1	131.0	110.1	143.0	114.3	0.0	February "	
መጋቢት 2001	177.2	197.6	151.9	199.0	136.6	142.2	142.2	175.3	129.5	111.8	145.4	113.7	0.0	March "	
ሚያዝያ 2001	180.5	201.9	153.8	202.6	137.2	139.3	146.4	175.0	133.5	111.8	152.2	114.2	0.0	April "	
ግንቦት 2001	186.2	212.9	153.1	203.6	144.9	143.4	141.5	169.5	137.4	111.8	153.1	115.0	0.0	May "	
ሰኔ 2001	191.6	220.3	155.9	190.4	152.3	141.5	152.7	169.4	143.2	112.2	155.4	114.8	0.0	June "	

ሠገጠርኝ ዓሁ- ጠቅላላ የ ሽግግር ዋጋ መጠኛ ኢንዱስትሪ ቢሥሩ የተካተቱ ክፍሎች ለሐረር ክልል መገንጠት
 ታህሳስ 1999 = 100

Table 9a: General Consumer Price Index and Its Components for the Harari People Regional State
 December 2006 = 100

ወርና ዓመት	ጠቅላላ ኢንዱስትሪ General Index	ጠቅላላ ምግብ ኢንዱስትሪ Food Total	ጠቅላላ ምግብ ካልሆኑ ኢንዱስትሪ Non-Food Total	ምግብ ካልሆኑ የኢንዱስትሪ ክፍሎች Non-food Consumer Price Index Components											Month and Year
				መጠጥ Beverages	ቢጃራና ትምባሆ Cigarettes and Tobacco	ላብስና መጫጊያ Clothing and Footwear	የቤት ኪራይ የቤት መሥሪያ ስቃዎች+ውሃ ነጻጅናሃይል House Rent, Construction Materials, Water, and Fuel and Power	የቤት ስቃዎች የቤት ግንባራዎች የቤት ተሳታፊዎች የቤት ሠራተኛ ደመወዝ Furniture, Furnishings, Household Equipment and Operation	ሕክምና Medical Care and Health	ትራንስፖርትና ጠገናኛ Transport and Communication	መዝናኛና ትምህርት Recreation, Entertainment and Education	የግል ጉዳዮችና የግል ጽግራ ስቃዎች Personal Care and Effects	ሌሎች ስቃዎች Miscellaneous Goods		
ታህሳስ 1999	100.0	100.0	100.0	100.0	100.0	100.0	100.0	100.0	100.0	100.0	100.0	100.0	100.0	100.0	December 2006
ሐምሌ 1999 - ሰኔ 2000	119.1	130.4	108.5	107.9	106.4	111.0	108.8	109.1	99.7	108.8	102.4	117.1	100.7	100.7	July 2007 - June 2008
ሐምሌ 2000 - ሰኔ 2001	169.5	205.1	136.3	159.7	164.8	149.9	131.1	135.0	104.8	124.8	117.7	137.6	118.3	118.3	July 2008 - June 2009
2000															2007/2008
መጋቢት 2000	123.6	134.9	113.0	107.5	104.5	116.5	115.1	113.8	94.2	121.2	100.3	121.4	98.5	98.5	March "
ጊያዝያ 2000	127.5	139.9	115.9	109.5	106.8	117.9	120.0	115.7	94.4	121.2	105.7	122.8	99.4	99.4	April "
ግንቦት 2000	144.4	169.0	121.4	112.8	111.1	124.3	128.3	121.6	96.3	121.2	105.9	125.7	104.9	104.9	May "
ሰኔ 2000	156.2	191.2	123.5	112.8	118.0	130.3	127.9	123.0	97.1	121.2	106.9	128.3	113.3	113.3	June "
2001															2008/2009
ሐምሌ 2000	163.7	201.0	128.8	154.2	129.8	134.3	130.6	124.1	98.7	130.4	106.9	129.5	116.6	116.6	July 2008
ነሐሴ 2000	170.1	214.3	128.9	153.3	123.6	135.7	129.6	126.5	98.0	130.4	108.1	130.7	116.0	116.0	August "
መስከረም 2001	171.6	213.9	132.0	153.5	123.6	143.8	130.9	128.2	99.3	130.4	115.2	129.1	118.8	118.8	September "
ጥቅምት 2001	173.6	213.9	136.0	156.8	123.6	145.2	139.2	132.0	106.8	131.8	114.5	134.9	118.3	118.3	October "
ኅዳር 2001	169.4	207.3	134.0	160.7	123.6	145.4	132.6	130.1	107.6	130.8	115.1	139.2	118.8	118.8	November "
ታህሳስ 2001	166.1	198.7	135.7	160.8	151.9	144.2	134.1	132.0	107.3	129.4	117.0	140.1	120.1	120.1	December "
ጥር 2001	165.4	195.9	136.8	160.8	180.7	152.7	128.6	137.9	107.6	118.7	118.7	139.0	117.3	117.3	January 2009
የካቲት 2001	169.5	202.8	138.4	160.5	188.9	155.6	131.0	136.6	106.7	118.7	118.2	140.0	118.5	118.5	February "
መጋቢት 2001	169.5	201.9	139.2	163.5	201.7	156.8	129.3	137.9	108.0	118.7	120.4	142.3	118.5	118.5	March "
ጊያዝያ 2001	170.1	202.3	140.1	163.5	201.7	157.8	129.2	142.0	107.8	118.7	123.4	141.5	118.5	118.5	April "
ግንቦት 2001	170.6	202.6	140.8	164.0	211.9	160.8	125.8	143.9	107.8	119.4	128.0	141.4	118.5	118.5	May "
ሰኔ 2001	174.7	206.5	145.0	165.4	216.0	166.4	132.8	148.9	101.7	120.1	126.3	142.8	119.3	119.3	June "

ሠንጠረዥ 100:- ጠቅላላ የሽንገቶች ዋጋ መመዘኛ ኢንዱስትሪ ቢሮ የተካተቱ ክፍሎች ለአርጋይያ ክልል መገንጠያ
 ታህሳስ 1999 = 100

Table 10a: General Consumer Price Index and Its Components for the Oromiya Regional State
 December 2006 = 100

ወርና ዓመት	ጠቅላላ ኢንዱስትሪ General Index	ጠቅላላ የምግብ ኢንዱስትሪ Food Total	ጠቅላላ የምግብ ከፍተኛ ኢንዱስትሪ Non-Food Total	Non-food Consumer Price Index Components											Month and Year	
				ምግብ ከፍተኛ Beverages	ቢዳራና ትምባሆ Cigarettes and Tobacco	ላብሳና መጫጫ Clothing and Footwear	የቤት ኪራይ የቤት መሥሪያ ስቃዎች፣ውሃ ነጻጅናጥይል House Rent, Construction Materials, Water, and Fuel and Power	የቤት ስቃዎች የቤት ግንባታዎች የቤት ተሳታፊዎች የቤት ሠራተኛ ደመወዝ Furniture, Furnishings, Household Equipment and Operation	ሕክምና Medical Care and Health	ትራንስፖርትና ጠናኛ Transport and Communication	መዝናኛና ትምህርት Recreation, Entertainment and Education	የግል ጉዳዮች Personal Care and Effects	ሌሎች ስቃዎች Miscellaneous Goods			
ታህሳስ 1999	100.0	100.0	100.0	100.0	100.0	100.0	100.0	100.0	100.0	100.0	100.0	100.0	100.0	100.0	100.0	December 2006
ሐምሌ 1999 - ሰኔ 2000	129.0	138.7	115.0	116.5	108.2	118.7	113.6	123.7	108.9	103.3	107.2	113.4	103.2	118.7	103.2	July 2007 - June 2008
ሐምሌ 2000 - ሰኔ 2001	179.5	202.0	146.9	182.8	143.8	152.0	142.4	155.0	134.0	106.4	126.3	149.2	118.7	118.7	118.7	July 2008 - June 2009
2000																2007/2008
መጋቢት 2000	139.4	151.5	121.9	123.0	122.1	123.0	121.8	133.9	113.1	107.3	111.5	118.9	105.9	105.9	105.9	March "
ሚያዝያ 2000	141.9	154.4	123.8	126.4	114.2	123.3	124.5	137.0	114.8	107.8	111.8	121.1	106.3	106.3	106.3	April "
ግንቦት 2000	154.6	173.3	127.6	132.9	116.7	130.8	126.6	140.1	116.9	107.8	110.2	128.7	111.7	111.7	111.7	May "
ሰኔ 2000	173.1	201.0	132.9	154.6	120.1	131.8	133.0	140.3	120.9	108.2	116.0	131.8	110.7	110.7	110.7	June "
2001																2008/2009
ሐምሌ 2000	188.3	223.8	136.9	168.1	125.6	133.9	135.7	145.8	123.5	108.2	119.9	133.8	115.8	115.8	115.8	July 2008
ነሐሴ 2000	190.4	224.8	140.7	177.0	134.2	138.1	138.9	148.0	127.1	108.2	123.6	140.6	116.1	116.1	116.1	August "
መስከረም 2001	190.9	226.0	140.1	174.6	133.4	139.6	136.5	148.8	128.8	108.2	124.4	139.8	120.8	120.8	120.8	September "
ጥቅምት 2001	187.9	217.9	144.5	180.7	134.6	142.5	141.8	151.9	130.8	120.9	125.9	142.0	118.8	118.8	118.8	October "
ኅዳር 2001	179.8	204.1	144.6	181.3	135.0	148.3	139.1	153.4	132.8	113.6	126.1	144.9	117.1	117.1	117.1	November "
ታህሳስ 2001	168.2	183.9	145.5	179.8	137.0	149.9	142.7	152.4	130.5	107.3	125.4	145.7	113.4	113.4	113.4	December "
ጥር 2001	171.7	188.9	146.7	189.2	141.5	151.8	142.4	153.0	131.6	102.0	124.6	147.7	114.4	114.4	114.4	January 2009
የካቲት 2001	173.6	190.0	149.9	189.2	152.3	159.3	144.3	158.8	132.6	98.4	125.0	151.2	116.4	116.4	116.4	February "
መጋቢት 2001	173.8	189.3	151.2	188.4	156.7	162.6	143.9	160.6	138.4	98.6	129.1	156.9	119.6	119.6	119.6	March "
ሚያዝያ 2001	175.5	191.1	153.0	188.8	157.1	163.9	146.9	161.0	139.1	100.7	130.8	160.2	121.2	121.2	121.2	April "
ግንቦት 2001	174.9	189.4	153.9	186.6	158.1	165.1	147.9	162.4	143.3	103.0	129.1	159.6	125.7	125.7	125.7	May "
ሰኔ 2001	178.8	194.5	156.1	190.1	160.1	169.5	148.1	163.9	149.6	108.3	132.0	167.4	125.1	125.1	125.1	June "

ሠንጠረዥ 11ሀ- ጠቅላላ የ ሽንገቶች ዋጋ መጠኛ ሊገደከነና ቢሥና የተካተቱ ክፍሎች ለደብዳቤ ከላላዊ መገገሚያ ታህሳስ 1999 = 100

Table 11a: General Consumer Price Index and Its Components for the SNNP Regional State
December 2006= 100

ወርና ዓመት	ጠቅላላ ሊገደከኑ	ጠቅላላ የምግብ ሊገደከኑ	ጠቅላላ የምግብ ክፍል ሊገደከኑ	Non-food Consumer Price Index Components											Month and Year
				መጠን	ቢዳራና ትምህርት	ላብስና መጫጫ	የቤት ኪራይ የቤት መሥሪያ ስቃዎች+ውሃ ነጻጅናሃይል	የቤት ስቃዎች የቤት ግንባታዎች የቤት ተሳታፊዎች የቤት ሠራተኛ ደመወዝ	ሕክምና	ትራንስፖርትና ግንባታ	መዘናኛና ትምህርት	የግል ጉዳዮችና የግል ጽግራ ስቃዎች	ሌሎች ስቃዎች		
General Index	Food Total	Non-Food Total	Beverages	Cigarettes and Tobacco	Clothing and Footwear	House Rent, Construction Materials, Water, and Fuel and Power	Furniture, Furnishings, Household Equipment and Operation	Medical Care and Health	Transport and Communication	Recreation, Entertainment and Education	Personal Care and Effects	Miscellaneous Goods			
ታህሳስ 1999	100.0	100.0	100.0	100.0	100.0	100.0	100.0	100.0	100.0	100.0	100.0	100.0	100.0	December 2006	
ሐምሌ 1999 - ሰኔ 2000	125.6	131.1	118.0	118.6	104.0	117.2	117.2	134.3	109.2	124.5	106.8	106.9	106.1	July 2007 - June 2008	
ሐምሌ 2000 - ሰኔ 2001	173.9	189.3	152.7	178.0	133.9	155.9	150.4	175.6	119.3	136.1	122.7	128.3	114.3	July 2008 - June 2009	
2000														2007/2008	
መጋቢት 2000	135.9	142.8	126.4	122.6	119.7	121.0	129.9	143.9	110.0	140.9	109.4	109.9	106.9	March "	
ጊዳር 2000	139.1	148.0	127.0	123.0	116.0	122.8	129.4	148.0	111.0	139.6	109.3	113.6	106.9	April "	
ግንቦት 2000	148.0	160.4	131.0	128.4	115.5	127.4	134.4	150.9	114.8	139.6	109.0	113.2	106.9	May "	
ሰኔ 2000	174.7	199.4	140.7	146.2	116.0	134.1	146.4	160.4	116.1	139.6	109.1	118.7	109.2	June "	
2001														2008/2009	
ሐምሌ 2000	184.1	214.7	141.9	171.8	126.2	136.8	141.3	159.7	112.1	139.6	110.0	123.0	108.0	July 2008	
ነሐሴ 2000	185.3	214.0	145.9	171.8	128.0	139.4	147.5	165.4	112.0	139.6	111.8	122.5	112.6	August "	
መስከረም 2001	187.5	215.4	149.2	180.3	127.6	143.8	150.3	167.6	116.8	139.6	112.5	123.7	110.4	September "	
ጥቅምት 2001	181.1	201.6	152.8	182.7	128.2	147.0	155.1	170.8	115.9	147.7	114.9	124.8	110.3	October "	
ኅዳር 2001	172.3	186.0	153.4	178.0	130.8	151.6	154.8	171.3	116.4	143.8	120.3	129.0	112.6	November "	
ታህሳስ 2001	164.9	173.5	153.1	177.3	131.5	156.6	152.0	174.5	116.6	136.3	121.4	126.6	112.6	December "	
ጥር 2001	164.9	173.1	153.5	175.4	130.1	159.1	152.4	172.9	115.8	131.3	127.4	127.0	112.6	January 2009	
የካቲት 2001	166.2	174.9	154.2	178.4	136.8	164.1	148.7	179.3	122.1	128.7	129.4	129.8	117.2	February "	
መጋቢት 2001	166.5	175.4	154.2	178.8	136.1	163.8	148.4	179.4	123.6	129.4	129.3	130.7	118.3	March "	
ጊዳር 2001	170.3	180.2	156.5	179.8	140.7	166.9	149.9	188.4	124.0	129.0	130.8	132.7	117.2	April "	
ግንቦት 2001	171.1	180.2	158.6	179.3	146.1	169.4	152.4	189.4	128.7	132.6	132.5	135.4	118.3	May "	
ሰኔ 2001	172.6	182.1	159.5	182.2	144.4	172.2	152.4	188.5	127.8	136.1	132.5	134.4	120.8	June "	

ወንጠራዥ 12ሁ-ጠቅላላ የ ሽግግሮች ዋጋ መመዘኛ ሊንደክስና ቢሥሩ የተካተቱ ክፍሎች ለሰግቢ ክልላዊ መንግስት
 ታህሳስ 1999 = 100

Table 12a: General Consumer Price Index and Its Components for the Somali Regional State
 December 2006 = 100

ወርና ዓመት	ጠቅላላ ሊንደክስ General Index	ጠቅላላ የምግብ ሊንደክስ Food Total	ጠቅላላ የምግብ ነፃ ሊንደክስ Non-Food Total	Non-food Consumer Price Index Components											Month and Year
				ምግብ ነፃ የልሆኑ የሊንደክስ ክፍሎች Beverages	ሲጃራና ትምህር Cigarettes and Tobacco	ላብስና መጫጫያ Clothing and Footwear	የቤት ኪራይ የቤት መሥሪያ ስቃዎች+ውሃ ነጻጅናሃይል House Rent, Construction Materials, Water, and Fuel and Power	የቤት ስቃዎች የቤት ግንባታዎች የቤት ተሳታፊዎች የቤት ወራተኛ ደመወዝ Furniture, Furnishings, Household Equipment and Operation	ሕክምና Medical Care and Health	ትራንስፖርትና ጫናዎች Transport and Communication	መዘናኛና ትምህርት Recreation, Entertainment and Education	የግል ንጽባናና የግል ጽግ ስቃዎች Personal Care and Effects	ሌሎች ስቃዎች Miscellaneous Goods		
ታህሳስ 1999	100.0	100.0	100.0	100.0	100.0	100.0	100.0	100.0	100.0	100.0	100.0	100.0	100.0	100.0	December 2006
ሐምሌ 1999 - ሰኔ 2000	118.5	124.6	108.5	105.8	109.2	111.4	107.9	107.2	133.1	103.5	100.8	99.7	100.8	100.8	July 2007 - June 2008
ሐምሌ 2000 - ሰኔ 2001	170.8	195.9	129.8	134.2	123.1	129.1	128.4	149.6	144.7	115.8	107.8	118.5	131.3	131.3	July 2008 - June 2009
2000															2007/2008
መጋቢት 2000	125.3	133.2	112.4	105.9	112.3	116.1	112.4	110.3	135.6	108.1	107.7	99.5	102.3	102.3	March "
ጊዳር 2000	127.3	136.3	112.7	105.2	109.0	117.1	112.0	113.9	137.8	109.2	105.0	101.4	100.7	100.7	April "
ግንቦት 2000	136.4	149.3	115.3	106.2	109.0	124.4	111.9	124.4	134.9	106.0	103.0	102.3	102.7	102.7	May "
ሰኔ 2000	151.5	171.1	119.4	108.7	105.9	124.8	120.4	127.8	142.1	112.9	101.6	102.3	102.7	102.7	June "
2001															2008/2009
ሐምሌ 2000	167.8	198.2	118.3	110.0	113.6	121.0	116.0	130.9	142.1	112.9	101.5	108.1	113.3	113.3	July 2008
ነሐሴ 2000	174.6	208.6	119.2	127.0	116.1	122.6	114.9	131.4	151.4	112.9	101.7	110.0	113.3	113.3	August "
መስከረም 2001	178.2	212.0	123.1	133.9	121.3	121.7	119.1	141.0	158.5	112.9	101.7	109.7	134.1	134.1	September "
ጥቅምት 2001	175.1	202.5	130.4	133.2	126.5	125.6	132.7	140.6	163.1	117.9	105.6	113.8	134.1	134.1	October "
ኅዳር 2001	170.1	193.3	132.3	133.3	123.1	127.1	136.7	141.2	163.7	117.9	108.6	116.1	134.1	134.1	November "
ታህሳስ 2001	154.8	170.6	129.1	133.2	123.1	127.3	128.3	145.0	152.4	113.7	109.3	119.3	134.1	134.1	December "
ጥር 2001	164.3	185.4	130.0	133.2	123.1	126.8	131.0	146.6	141.9	116.0	108.1	119.1	134.1	134.1	January 2009
የካቲት 2001	169.9	194.0	130.7	133.2	123.1	132.1	127.6	156.2	125.1	117.1	105.6	124.2	135.8	135.8	February "
መጋቢት 2001	169.3	191.1	133.8	142.1	123.1	135.5	131.1	162.4	123.6	117.1	107.5	123.1	135.8	135.8	March "
ጊዳር 2001	171.9	194.6	135.0	146.4	123.1	133.9	133.4	164.2	129.2	117.1	107.7	127.9	135.8	135.8	April "
ግንቦት 2001	173.5	196.3	136.2	142.9	123.1	136.5	134.0	167.2	131.4	117.1	114.9	125.2	135.8	135.8	May "
ሰኔ 2001	179.5	203.8	139.8	142.4	138.5	138.6	136.1	168.9	154.3	117.3	121.4	125.7	135.8	135.8	June "

ሠንጠረዥ 130:- ጠቅላላ የ ሽግግር ዋጋ መመዘኛ ኢንዱክስ በሥሩ የተተካ ክፍሎች ለትግራይ ክልል መገንጠት ታህሳስ 1999 = 100

Table 13a: General Consumer Price Index and Its Components for the Tigray Regional State December 2006 = 100

ወርና ዓመት	ጠቅላላ ኢንዱክስ General Index	ጠቅላላ የምግብ ኢንዱክስ Food Total	ጠቅላላ የምግብ ካልሆኑ ኢንዱክስ Non-Food Total	Non-food Consumer Price Index Components											Month and Year	
				ምግብ ካልሆኑ የኢንዱክስ ክፍሎች Beverages	ሲጃራና ትምባሆ Cigarettes and Tobacco	ላብስና መጫጊያ Clothing and Footwear	የቤት ኪራይ የቤት መሥሪያ ስቃዎች+ውሃ ነጻጅናሃይል House Rent, Construction Materials, Water, and Fuel and Power	የቤት ስቃዎች የቤት ግንባታዎች የቤት ተሳታፊዎች የቤት ሠራተኛ ደመወዝ Furniture, Furnishings, Household Equipment and Operation	ሕክምና Medical Care and Health	ትራንስፖርትና ጠናኛ Transport and Communication	መዘናኛና ትምህርት Recreation, Entertainment and Education	የግል ግንባታና የግል ጽግራ ስቃዎች Personal Care and Effects	ሌሎች ስቃዎች Miscellaneous Goods			
ታህሳስ 1999	100.0	100.0	100.0	100.0	100.0	100.0	100.0	100.0	100.0	100.0	100.0	100.0	100.0	100.0	100.0	December 2006
ሐምሌ 1999 - ሰኔ 2000	130.1	143.4	111.7	112.2	101.6	119.7	107.8	120.2	104.7	99.1	105.0	105.8	116.0	116.0	116.0	July 2007 - June 2008
ሐምሌ 2000 - ሰኔ 2001	183.0	214.8	139.4	188.8	117.4	161.4	131.1	151.8	106.4	101.4	113.3	126.5	134.5	134.5	134.5	July 2008 - June 2009
2000																2007/2008
መጋቢት 2000	137.7	155.2	113.8	117.6	108.8	120.1	109.0	126.4	101.7	105.9	105.8	109.9	116.6	116.6	116.6	March "
ሚያዝያ 2000	139.7	156.5	116.6	121.5	106.5	128.2	108.8	129.6	104.6	105.6	107.6	114.2	118.1	118.1	118.1	April "
ግንቦት 2000	146.6	166.7	118.9	125.5	106.8	128.2	112.5	135.7	104.0	105.6	105.7	115.4	118.8	118.8	118.8	May "
ሰኔ 2000	173.0	207.2	125.9	162.2	105.4	132.1	123.4	141.9	105.9	105.6	109.9	103.5	125.5	125.5	125.5	June "
2001																2008/2009
ሐምሌ 2000	187.5	230.2	128.7	190.7	109.1	138.7	123.4	139.9	101.0	105.6	108.3	114.8	127.2	127.2	127.2	July 2008
ነሐሴ 2000	192.7	237.7	130.9	190.1	108.9	144.1	124.2	146.8	104.5	105.6	110.6	109.8	128.5	128.5	128.5	August "
መስከረም 2001	199.3	244.3	137.4	186.8	117.0	154.1	132.6	146.9	107.2	105.8	113.7	109.3	143.6	143.6	143.6	September "
ጥቅምት 2001	198.5	241.1	140.0	183.9	112.1	155.5	135.8	151.9	110.4	116.3	111.7	109.4	139.0	139.0	139.0	October "
ኅዳር 2001	187.8	223.4	138.9	179.2	109.6	160.9	130.7	150.8	100.5	112.1	114.4	115.6	140.3	140.3	140.3	November "
ታህሳስ 2001	177.8	206.8	138.0	182.8	114.2	159.9	132.1	149.0	101.2	100.9	113.8	107.6	139.3	139.3	139.3	December "
ጥር 2001	174.3	200.8	137.8	182.7	113.8	160.4	132.4	151.1	104.9	95.1	112.0	109.3	132.3	132.3	132.3	January 2009
የካቲት 2001	174.8	200.2	140.0	184.9	113.0	168.5	129.6	151.0	108.3	94.7	110.2	136.4	126.2	126.2	126.2	February "
መጋቢት 2001	176.9	203.3	140.6	189.1	111.9	169.1	129.2	151.6	107.6	95.2	111.3	138.2	132.3	132.3	132.3	March "
ሚያዝያ 2001	178.0	203.7	142.8	184.5	121.8	170.6	132.5	154.2	110.5	94.2	114.4	145.4	128.5	128.5	128.5	April "
ግንቦት 2001	173.1	191.6	147.7	205.7	131.4	175.7	134.8	163.2	110.1	95.5	117.4	154.3	135.9	135.9	135.9	May "
ሰኔ 2001	175.8	194.3	150.3	205.7	146.5	179.0	135.7	164.9	110.2	96.3	122.2	167.2	141.0	141.0	141.0	June "

ጠቅላላ የግብርና የግብር ክፍሎች የ ሽንጃዎች ዋጋ መጠነኛ ሊያደስስ በላገር አቶኖ ደረጃ
 ታህሳስ 1999 = 100

Table 1b: Consumer Price Index of Total Food and Its Components at Country Level
 December 2006 = 100

ወር ዓመት	ጠቅላላ ምግብ	አህል	በቤት ውስጥ የተወሰኑ የምግብ ዓይነቶች					FOOD TAKEN AT HOME							ከቤት ውጭ የተወሰኑ ምግቦች	Month and Year	
			ጥራጥረ	ዓባና ሌሎች የተዘጋጁ ምግቦች	ሥጋ	ወተት+ ዓይብና እንቅላል	ዘይትና ቅባቶች	እትክልትና ፍራፍራ	ቅመግ ቅመጥ	ድንችና ሌሎች ሥራሥርች	ያልተቆላ ቤናና ሻይ	ሌሎች ምግቦች	የግብረ-ጫ አገልግሎት				
ታህሳስ 1999	100.0	100.0	100.0	100.0	100.0	100.0	100.0	100.0	100.0	100.0	100.0	100.0	100.0	100.0	100.0	100.0	December 2006
ሐምሌ 1999 - ሰኔ 2000	137.2	137.2	124.1	137.6	120.0	117.7	152.6	142.0	325.9	125.7	124.5	104.7	113.9	118.7	118.7	118.7	July 2007 - June 2008
ሐምሌ 2000 - ሰኔ 2001	198.0	239.8	169.9	225.5	149.6	159.5	170.3	168.0	272.1	188.3	143.3	164.7	129.6	151.1	151.1	151.1	July 2008 - June 2009
2000																	2007/2008
መገቢት 2000	146.9	146.9	129.6	147.2	124.6	126.6	168.3	173.3	327.7	141.8	131.1	116.4	117.2	123.2	123.2	123.2	March "
ጊያዝያ 2000	149.8	151.3	131.6	148.8	126.1	129.3	172.3	172.3	333.0	145.0	132.4	111.8	118.3	125.3	125.3	125.3	April "
ግንቦት 2000	166.3	182.4	139.7	160.5	133.6	135.6	184.8	173.1	353.5	151.4	137.1	118.5	121.7	128.4	128.4	128.4	May "
ሰኔ 2000	195.2	238.1	160.5	195.0	141.2	143.2	184.2	148.8	395.3	178.0	141.3	127.3	122.6	135.9	135.9	135.9	June "
2001																	2008/2009
ሐምሌ 2000	216.6	285.9	172.7	211.8	144.0	145.2	181.6	140.0	415.8	178.0	139.1	137.5	126.1	140.1	140.1	140.1	July 2008
ክሐሴ 2000	218.5	287.5	173.3	223.2	145.4	148.6	176.5	153.1	412.8	177.6	138.7	147.1	125.8	142.8	142.8	142.8	August "
መስከረም 2001	220.6	290.2	175.9	225.0	151.3	155.4	181.1	156.8	390.9	178.4	141.2	149.6	127.4	146.6	146.6	146.6	September "
ጥቅምት 2001	214.3	277.6	176.8	231.2	150.4	157.5	178.1	150.5	351.9	177.0	141.9	147.3	128.6	148.0	148.0	148.0	October "
ኅዳር 2001	202.2	252.1	173.9	234.2	148.1	156.0	172.2	145.8	314.4	175.6	141.3	154.3	127.9	148.3	148.3	148.3	November "
ታህሳስ 2001	184.3	214.3	162.9	225.0	146.6	150.6	166.2	147.0	275.7	175.7	138.6	158.4	126.3	149.9	149.9	149.9	December "
ጥር 2001	185.3	215.2	162.7	224.1	147.3	157.5	164.4	158.5	232.1	186.7	140.4	171.7	125.6	152.8	152.8	152.8	January 2009
የኮቲት 2001	186.1	212.8	167.5	228.3	147.8	164.0	162.8	172.3	202.2	198.0	144.6	178.7	129.0	153.5	153.5	153.5	February "
መገቢት 2001	185.9	210.3	164.8	226.1	148.8	161.5	163.5	188.8	183.0	203.5	147.6	179.7	130.3	156.5	156.5	156.5	March "
ጊያዝያ 2001	187.8	211.8	168.5	220.9	157.5	167.2	167.6	194.3	173.1	206.7	149.2	181.8	133.2	157.0	157.0	157.0	April "
ግንቦት 2001	185.6	207.4	171.2	227.7	153.4	172.7	166.4	203.1	159.6	196.3	147.1	185.5	135.7	157.6	157.6	157.6	May "
ሰኔ 2001	188.6	212.4	169.2	228.6	154.5	177.9	163.5	205.8	153.5	206.1	149.6	184.5	139.0	160.0	160.0	160.0	June "
	-3.4	-10.8	5.4	17.2	9.4	24.2	-11.2	38.3	-61.2	15.8	5.9	44.9	13.4	17.7	17.7	17.7	

ሠንጠረዥ 2ሀ፡- የምግብ ዋጋ መመዘኛ ኢንዱስትሪ ግብዓታዎች በአገር አቀፍ እና በክልሎች ደረጃ
 ታህሳስ 1999 = 100

Table 2b: Summary of Consumer Price Indices of Food at Country and Regional Levels
 December 2006=100

ወርና ዓመት	Reporting Level												Month and Year
	Eth.	A.A.	Afar	Amhara	B.Gumuz	D.Dawa	Gambela	Harari	Oromia	SNNP	Somalia	Tigray	
ታህሳስ 1999	100.0	100.0	100.0	100.0	100.0	100.0	100.0	100.0	100.0	100.0	100.0	100.0	December 2006
ሐምሌ 1999 - ሰኔ 2000	137.2	134.8	136.1	139.6	148.2	135.4	133.8	130.4	138.7	131.1	124.6	143.4	July 2007 - June 2008
ሐምሌ 2000 - ሰኔ 2001	198.0	190.7	189.5	198.7	226.1	199.5	226.8	205.1	202.0	189.3	195.9	214.8	July 2008 - June 2009
2000													2007/2008
መጋቢት 2000	146.9	142.6	137.9	142.5	161.2	146.2	134.4	134.9	151.5	142.8	133.2	155.2	March "
ግድሃ 2000	149.8	143.2	139.4	145.0	160.0	148.5	131.4	139.9	154.4	148.0	136.3	156.5	April "
ጥቅምት 2000	166.3	163.5	161.9	164.3	167.9	161.8	151.6	169.0	173.3	160.4	149.3	166.7	May "
ሰኔ 2000	195.2	183.9	178.4	190.4	206.4	180.5	189.6	191.2	201.0	199.4	171.1	207.2	June "
2001													2008/2009
ሐምሌ 2000	216.6	195.2	198.7	216.5	246.8	192.8	248.8	201.0	223.8	214.7	198.2	230.2	July 2008
ኦገስት 2000	218.5	197.5	200.6	218.0	262.9	204.3	276.8	214.3	224.8	214.0	208.6	237.7	August "
መስከረም 2001	220.6	198.8	201.0	221.4	272.8	204.4	269.0	213.9	226.0	215.4	212.0	244.3	September "
ጥቅምት 2001	214.3	196.8	200.0	220.9	246.6	205.4	271.2	213.9	217.9	201.6	202.5	241.1	October "
ኅዳር 2001	202.2	194.8	192.5	212.2	237.8	200.7	224.5	207.3	204.1	186.0	193.3	223.4	November "
ታህሳስ 2001	184.3	184.8	180.2	190.7	215.0	197.8	200.8	198.7	183.9	173.5	170.6	206.8	December "
ጥር 2001	185.3	181.9	180.1	187.8	199.4	195.8	198.9	195.9	188.9	173.1	185.4	200.8	January 2009
ፀደቅት 2000	186.1	183.4	182.1	185.9	202.2	198.5	198.5	202.8	190.0	174.9	194.0	200.2	February "
መጋቢት 2001	185.9	186.0	181.5	184.0	206.8	199.5	197.6	201.9	189.3	175.4	191.1	203.3	March "
ግድሃ 2001	187.8	189.4	185.0	184.5	206.1	198.5	201.9	202.3	191.1	180.2	194.6	203.7	April "
ጥቅምት 2001	185.6	191.0	185.3	180.8	205.1	198.4	212.9	202.6	189.4	180.2	196.3	191.6	May "
ሰኔ 2001	188.6	189.3	187.5	181.9	211.2	198.0	220.3	206.5	194.5	182.1	203.8	194.3	June "
	-3.4	3.0	5.1	-4.5	2.4	9.7	16.2	8.0	-3.2	-8.7	19.1	-6.2	

ወንጠረኝ 3 ለ፡- ጠቅላላ የሽግግር ዋጋ መመዘኛ ኢንዱስትሪ ቢሮ የተከተቱ ከፍተኛ ለአዲስ አበባ ከተማ መስተዳድር ታህሳስ 1999 = 100

Table 3b: Consumer Price Index of Total Food and Its Components for Addis Ababa City Administration December 2006 = 100

ወርና ዓመት	ጠቅላላ የግዥ	አሁን	በቤት ውስጥ የተወሰኑ የምግብ ዓይነቶች			FOOD TAKEN AT HOME					ክፍት ወጪ የተወሰኑ የምግቦች	ክብት ወጪ የተወሰኑ የምግቦች	Month and Year		
			ጥራጥረ	ባቦና ሌሎች የተዘጋጁ የምግቦች	ሥጋ	ወተት+ ዓይብና እንቁላል	ዘይትና ቅባቶች	እትክልትና ፍራፍራ	ቅመም ቅመም	ደንችና ሌሎች ሥራሥርቶች				ቃተቃላ ቦናና ዝይ ቅጠል	ሌሎች የምግቦች
ታህሳስ 1999	100.0	100.0	100.0	100.0	100.0	100.0	100.0	100.0	100.0	100.0	100.0	100.0	100.0	100.0	December 2006
ሐምሌ 1999 - ሰኔ 2000	134.8	122.2	134.5	134.6	118.9	129.4	145.3	134.2	320.3	206.6	128.5	105.9	119.7	120.6	July 2007 - June 2008
ሐምሌ 2000 - ሰኔ 2001	190.7	213.2	192.8	217.4	153.7	182.2	166.2	183.0	252.2	288.8	137.3	159.8	139.7	156.1	July 2008 - June 2009
2000															2007/2008
ጠገቢት 2000	142.6	129.7	143.7	143.1	122.3	131.0	161.8	107.3	307.9	303.0	137.2	116.1	118.6	122.3	March "
ጊዳር 2000	143.2	130.3	144.6	143.3	123.7	133.5	161.5	103.2	325.4	292.5	139.3	106.7	119.6	124.7	April "
ግንቦት 2000	163.5	150.8	163.9	185.8	133.8	143.6	187.5	101.6	353.8	343.9	140.5	115.5	136.4	143.1	May "
ሰኔ 2000	183.9	200.4	189.0	201.5	142.1	158.4	183.0	120.9	379.4	331.8	140.9	124.1	138.8	141.5	June "
2001															2008/2009
ሐምሌ 2000	195.2	213.4	197.9	215.3	152.4	168.1	175.9	161.4	394.8	324.2	141.3	136.4	139.6	146.8	July 2008
ኤሌ 2000	197.5	220.4	201.6	212.7	147.2	167.8	170.9	207.6	388.0	233.7	138.1	144.3	141.3	147.4	August "
መስከረም 2001	198.8	226.6	204.3	212.8	159.7	181.9	172.2	195.5	347.8	242.9	139.5	143.7	138.5	149.1	September "
ጥቅምት 2001	196.8	231.8	205.1	218.3	157.6	183.1	170.9	160.7	313.4	251.6	140.5	134.5	141.1	154.0	October "
ኅዳር 2001	194.8	233.4	200.6	217.3	156.0	181.4	163.5	153.3	277.4	313.2	136.0	137.2	139.2	154.8	November "
ታህሳስ 2001	184.8	204.8	191.1	214.2	150.0	179.7	161.5	154.5	271.6	263.7	133.9	149.0	137.2	153.7	December "
ጥር 2001	181.9	202.0	188.8	214.3	148.9	182.6	159.5	156.8	209.5	264.9	134.1	168.4	137.0	154.3	January 2009
የሐቲት 2001	183.4	203.8	179.9	216.8	150.2	180.7	155.7	167.3	195.5	312.4	136.5	172.4	139.0	157.0	February "
ጠገቢት 2001	186.0	204.0	188.4	221.0	150.7	184.4	156.3	190.7	175.5	328.0	137.3	176.2	141.2	157.5	March "
ጊዳር 2001	189.4	206.3	187.5	225.4	154.7	182.3	168.1	211.3	157.4	321.8	135.1	180.1	142.1	161.3	April "
ግንቦት 2001	191.0	207.5	186.0	217.3	157.5	191.8	169.4	229.5	149.1	318.0	138.0	187.7	140.1	169.0	May "
ሰኔ 2001	189.3	204.7	182.5	223.8	159.1	203.1	170.3	207.6	146.7	290.9	137.6	188.1	140.1	168.1	June "

ወንጠረኛ ልሳ፡- ጠቅላላ የምግብ ክፍሎች የ ሽግግር ዋጋ መመዘኛ ኢንዱስትሪ ለሌላ ገለጻ መገንጠያ
 ታህሳስ 1999 = 100

Table 4b: Consumer Price index of Total Food and Its Components for the Afar Regional State

December 2006 = 100

ወርና ዓመት	ጠቅላላ የምግብ	አህል	በቤት ውስጥ የተወሰዱ የምግብ ዓይነቶች					FOOD TAKEN AT HOME						ከቤት ውጪ የተወሰዱ የምግቦች	Month and Year	
			ጥራጥራ	ዳቦና ሌሎች የተዘጋጁ የምግቦች	ሥጋ	ወተት+ ዓይብና እንቁላል	ዘይትና ትብቶች	እትክልትና ፍራፍራ	ትመግ ትመጥ	ደገገና ሌሎች ሥራሥርጎች	ያልተቆላ ቡናና ሻይ ትጠል	ሌሎች የምግቦች	የግዘራጫ አገልግሎት			
ታህሳስ 1999	100.0	100.0	100.0	100.0	100.0	100.0	100.0	100.0	100.0	100.0	100.0	100.0	100.0	100.0	100.0	December 2006
ሐምሌ 1999 - ሰኔ 2000	136.1	124.6	147.1	127.1	140.1	139.8	151.6	138.8	341.4	151.8	105.8	94.9	101.8	121.1	121.1	July 2007 - June 2008
ሐምሌ 2000 - ሰኔ 2001	189.5	206.5	205.3	229.6	178.5	180.0	174.1	192.5	275.7	233.8	143.2	137.1	119.7	170.3	170.3	July 2008 - June 2009
2000																2007/2008
መገቢት 2000	137.9	126.2	157.8	131.1	142.4	133.0	166.6	155.5	322.9	192.7	106.9	99.8	103.0	123.1	123.1	March "
ግድሃ 2000	139.4	131.3	163.4	137.3	145.0	133.3	162.3	111.6	333.8	184.0	111.1	104.6	103.0	124.5	124.5	April "
ግንቦት 2000	161.9	155.8	172.7	175.1	163.2	175.2	182.0	120.1	359.7	228.3	116.1	102.9	106.5	136.6	136.6	May "
ሰኔ 2000	178.4	185.6	206.9	206.7	163.7	175.3	191.8	116.2	392.7	228.3	121.6	107.0	108.1	156.5	156.5	June "
2001																2008/2009
ሐምሌ 2000	198.7	222.3	218.7	219.2	170.1	196.4	188.7	154.7	452.6	242.5	130.2	109.2	113.1	162.1	162.1	July 2008
ክሌሌ 2000	200.6	235.8	224.3	223.0	175.8	178.1	184.3	196.4	389.1	242.5	138.3	118.2	116.5	165.4	165.4	August "
መስከረም 2001	201.0	237.1	229.5	224.7	177.4	176.4	174.0	194.0	389.7	225.1	140.2	122.9	128.2	167.8	167.8	September "
ጥቅምት 2001	200.0	240.0	233.0	229.0	172.7	176.6	172.8	182.7	336.9	228.3	140.1	124.9	122.6	170.0	170.0	October "
ጥር 2001	192.5	219.7	230.5	223.4	168.4	177.5	171.7	171.9	319.0	232.9	140.8	124.3	120.4	167.9	167.9	November "
ታህሳስ 2001	180.2	193.5	194.0	215.7	157.5	176.5	170.0	160.5	282.7	223.7	137.0	123.1	120.4	171.1	171.1	December "
ጥር 2001	180.1	190.1	197.1	212.8	166.8	182.7	169.4	159.7	246.1	223.3	138.8	135.6	120.4	168.9	168.9	January 2009
የካቲት 2001	182.1	190.1	190.2	230.5	165.7	186.4	174.2	173.6	210.8	228.3	137.4	149.9	119.1	172.1	172.1	February "
መገቢት 2001	181.5	188.1	188.4	241.6	167.9	177.0	175.9	195.4	203.9	232.4	136.9	149.3	119.1	173.1	173.1	March "
ግድሃ 2001	185.0	186.4	188.6	243.0	210.1	177.9	173.5	202.3	169.3	241.6	156.4	163.6	119.1	174.7	174.7	April "
ግንቦት 2001	185.3	186.6	185.7	244.5	203.2	177.7	167.6	262.3	155.3	246.1	154.4	161.2	119.1	171.4	171.4	May "
ሰኔ 2001	187.5	188.3	183.5	247.8	206.5	177.3	166.7	256.3	153.2	238.8	168.0	163.5	119.1	178.7	178.7	June "

ወንጠረዥ 5A:- ጠቅላላ የምግብ ክፍሎች የ ሽግግር ዋጋ መመዘኛ ኢንዱስትሪ ለላግራ ክልላዊ መንግሥት
 ታህሳስ 1999 = 100

Table 5b: Consumer Price Index of Total Food and Its Components for the Amhara Regional State
 December 2006 = 100

ወርና ዓመት	ጠቅላላ ምግብ	አህል	በቤት ውስጥ የተወሰዱ የምግብ ዓይነቶች			FOOD TAKEN AT HOME								ከቤት ውጪ የተወሰዱ ምግቦች	Month and Year	
			ጥራጥራ	ዳቦና ሌሎች የተዘጋጁ ምግቦች	ሥጋ	ወተትና ዓይብና እንቁላል	ዘይትና ትብቶች	እትክልትና ፍራፍራ	ትመግ ትመጥ	ደገገና ሌሎች ሥራሥሮች	ያልተቆላ ቤናና ሻይ ትጠል	ሌሎች ምግቦች	የግዘራጫ አገልግሎት			
ታህሳስ 1999	100.0	100.0	100.0	100.0	100.0	100.0	100.0	100.0	100.0	100.0	100.0	100.0	100.0	100.0	100.0	December 2006
ሐምሌ 1999 - ሰኔ 2000	139.6	137.6	117.9	131.0	117.8	125.6	161.8	129.4	297.0	122.1	125.2	105.8	106.7	121.4	121.4	July 2007 - June 2008
ሐምሌ 2000 - ሰኔ 2001	198.7	231.9	163.4	215.5	144.6	178.9	183.7	160.6	248.5	188.8	140.1	183.2	121.2	158.7	158.7	July 2008 - June 2009
2000																2007/2008
መገቢት 2000	142.5	139.2	122.4	137.1	124.8	129.3	172.6	131.0	280.0	140.8	137.2	114.8	104.7	127.2	127.2	March "
ግድሃዳ 2000	145.0	142.8	123.3	140.0	124.6	131.3	182.0	125.7	285.3	139.7	136.9	115.3	106.7	128.9	128.9	April "
ግንቦት 2000	164.3	173.8	129.6	154.4	128.1	136.8	191.7	116.4	328.0	170.7	138.6	123.9	108.0	132.0	132.0	May "
ሰኔ 2000	190.4	216.1	148.5	179.8	129.5	148.7	197.4	115.5	368.1	178.3	137.3	131.8	108.8	140.0	140.0	June "
2001																2008/2009
ሐምሌ 2000	216.5	262.0	165.8	201.9	131.4	158.7	188.8	133.2	386.8	180.5	135.7	151.4	112.4	145.5	145.5	July 2008
ክሌሌ 2000	218.0	261.0	172.1	207.9	132.9	178.0	191.9	158.4	376.3	185.6	137.4	155.6	111.8	149.0	149.0	August "
መስከረም 2001	221.4	269.1	172.3	210.3	141.8	174.5	189.8	154.6	346.5	184.5	137.2	157.2	115.9	157.1	157.1	September "
ጥቅምት 2001	220.9	271.0	172.9	218.1	142.2	173.6	189.7	135.7	323.6	176.4	142.8	161.0	124.9	156.3	156.3	October "
ጥር 2001	212.2	255.6	171.3	217.9	140.8	174.3	185.5	134.2	297.1	174.1	142.3	175.2	123.5	158.0	158.0	November "
ታህሳስ 2001	190.7	216.9	162.4	213.5	141.0	173.2	178.2	134.8	256.5	169.9	139.8	179.7	123.4	159.7	159.7	December "
ጥር 2001	187.8	215.2	160.5	214.6	142.5	175.0	178.6	138.2	214.2	165.8	140.7	196.2	120.0	161.1	161.1	January 2009
የኮቲት 2001	185.9	210.1	161.7	219.4	144.1	183.7	179.6	167.7	184.2	207.5	140.0	203.5	121.6	160.8	160.8	February "
መገቢት 2001	184.0	208.7	153.0	220.8	148.4	184.9	177.9	179.6	164.3	208.0	139.7	203.1	124.0	164.2	164.2	March "
ግድሃዳ 2001	184.5	208.4	155.9	219.0	167.9	187.1	180.9	184.1	148.1	208.0	140.7	204.9	122.6	162.9	162.9	April "
ግንቦት 2001	180.8	201.3	156.8	222.0	149.1	188.5	183.5	202.7	144.3	208.6	140.1	206.0	125.2	163.8	163.8	May "
ሰኔ 2001	181.9	203.4	156.5	220.2	153.0	195.6	179.6	204.1	139.9	197.1	144.4	204.1	128.9	165.8	165.8	June "

ወንጠረዥ ልሳ፡- ጠቅላላ የምግብ ክፍሎች የ ሸግጥኛ የጋ መመዘኛ ኢንዱስትሪ ለቤኔሽንጎል ንዎስ አልገደ መገንጠት
 ታህሳስ 1999 = 100

Table 6b: Consumer Price Index of Total Food and Its Components for the Benishangul Gumuz Regional state
 December 2006 = 100

ወርና ዓመት	ጠቅላላ የምግብ	እህል	በቤት ውስጥ የተወለሱ የምግብ ዓይነቶች			FOOD TAKEN AT HOME					የሌሎች ስጦታዎች	ከቤት ውጭ የተወለዱ የምግቦች	Month and Year		
			ጥራጥራ	ዳቦና ሌሎች የተዘጋጁ የምግቦች	ሥጋ	ወተት+ ዓይብና እንቁላል	ዘይትና ቅባቶች	አትክልትና ፍራፍራ	ቅመግ ቅመጦ	ደንችና ሌሎች ሥራሥሮች				ቆይታ ቤናና ያልተቆላ ቆይታ	ሌሎች የምግቦች
ታህሳስ 1999	100.0	100.0	100.0	100.0	100.0	100.0	100.0	100.0	100.0	100.0	100.0	100.0	100.0	100.0	December 2006
ሐምሌ 1999 - ሰኔ 2000	148.2	160.9	112.5	129.7	131.1	108.5	142.4	116.6	366.2	127.0	128.5	105.1	111.1	117.8	July 2007 - June 2008
ሐምሌ 2000 - ሰኔ 2001	226.1	297.3	158.6	222.6	172.4	158.4	176.9	149.0	332.9	200.3	134.5	166.3	126.0	150.8	July 2008 - June 2009
2000															2007/2008
መገቢት 2000	161.2	177.9	113.0	140.4	131.4	109.9	153.1	124.4	437.3	135.0	132.1	112.6	116.3	123.7	March "
ጊዮርጊያ 2000	160.0	178.2	116.3	141.7	136.6	109.4	155.0	125.6	386.5	130.1	134.2	108.3	109.2	124.8	April "
ግንቦት 2000	167.9	190.8	119.0	148.7	143.6	115.5	167.6	124.9	385.4	130.9	139.6	109.9	109.2	130.8	May "
ሰኔ 2000	206.4	272.2	116.0	168.3	155.1	125.0	171.7	116.8	392.1	161.4	134.4	125.6	115.3	139.5	June "
2001															2008/2009
ሐምሌ 2000	246.8	344.0	156.3	185.0	167.2	142.6	171.8	111.4	478.5	179.0	142.2	140.9	126.9	143.3	July 2008
ኤሌ 2000	262.9	375.6	173.4	201.0	169.3	149.6	168.1	130.3	457.4	213.5	138.9	142.8	127.1	143.8	August "
መስከረም 2001	272.8	392.5	177.9	208.8	179.3	150.7	171.2	136.1	461.2	229.9	144.1	148.7	131.7	143.4	September "
ጥቅምት 2001	246.6	341.4	158.8	219.1	181.7	153.2	169.2	135.4	401.7	214.3	139.9	146.7	135.9	142.3	October "
ኅዳር 2001	237.8	326.7	142.5	224.1	175.0	155.6	171.5	132.2	381.3	209.1	136.7	155.0	129.4	143.1	November "
ታህሳስ 2001	215.0	272.5	141.8	234.8	173.3	159.2	192.5	174.0	289.2	205.6	130.8	169.8	122.2	152.2	December "
ጥር 2001	199.4	243.7	144.2	231.2	170.7	159.9	172.4	152.7	284.7	213.9	122.9	175.5	113.5	151.6	January 2009
የኮቲት 2001	202.2	247.4	148.8	231.3	171.1	163.4	170.9	156.0	288.0	212.1	125.5	178.6	114.8	154.1	February "
መገቢት 2001	206.8	255.9	140.1	234.5	172.2	165.9	167.8	166.7	289.6	174.8	130.7	180.3	124.6	158.6	March "
ጊዮርጊያ 2001	206.1	253.8	168.9	244.5	168.6	164.7	190.0	161.6	239.9	167.3	129.6	186.4	130.2	155.8	April "
ግንቦት 2001	205.1	254.0	170.2	242.8	168.4	164.6	193.2	160.5	196.6	172.7	132.9	183.4	126.0	159.5	May "
ሰኔ 2001	211.2	260.0	179.7	214.2	172.5	172.1	184.4	171.8	226.7	211.6	139.3	187.7	129.2	162.3	June "

ወገንጠራዎች ገለጻ፡- ጠቅላላ የምግብና የምግብ ክፍሎች የ ሽግግሮች ዋጋ መመዘኛ ለጊዜያዊ ለደረጃዎች ለወገንጠራ ካውንስል
 ታህሳስ 1999 = 100

Table 7b: Consumer Price Index of Total Food and Its Coponents for the Dire Dawa Adminstrative Council
 December 2006 = 100

ወርና ዓመት	ጠቅላላ ምግብ	እህል	በቤት ውስጥ የተወሰኑ የምግብ ዓይነቶች			FOOD TAKEN AT HOME							ከቤት ውጪ የተወሰኑ ምግቦች	Month and Year	
			ጥራጥራ	ዳቦና ሌሎች የተዘጋጁ ምግቦች	ሥጋ	ወተት+ ዓይብና እንቁላል	ዘይትና ቅባቶች	እትክልትና ፍራፍራ	ትመግ ቅመም	ደገትና ሌሎች ሥራሥሮች	ቆይታ ቤትና ሻይ ቅጠል	ሌሎች ምግቦች			የግብረግብ አገልግሎት
ታህሳስ 1999	100.0	100.0	100.0	100.0	100.0	100.0	100.0	100.0	100.0	100.0	100.0	100.0	100.0	100.0	December 2006
ሐምሌ 1999 - ሰኔ 2000	135.4	140.9	148.3	127.9	107.8	118.5	151.7	132.9	353.5	167.6	133.9	95.4	90.7	114.7	July 2007 - June 2008
ሐምሌ 2000 - ሰኔ 2001	199.5	240.3	197.8	236.8	130.0	177.9	183.5	183.0	298.6	221.9	161.8	114.0	95.5	176.8	July 2008 - June 2009
2001															2007/2008
መገቢት 2000	146.2	147.2	146.5	144.2	106.7	122.0	165.5	139.7	337.2	243.0	149.2	102.9	86.6	141.2	March "
ጊዳር 2000	148.5	155.3	152.9	141.5	106.4	135.0	169.6	123.0	381.2	221.9	147.9	106.8	86.6	143.2	April "
ግንቦት 2000	161.8	183.7	175.3	158.9	125.9	152.8	185.7	118.1	413.2	322.0	137.2	106.8	86.6	134.1	May "
ሰኔ 2000	180.5	225.5	193.4	185.1	126.0	154.3	190.3	140.7	428.4	281.7	140.0	107.1	92.6	136.1	June "
2000															2008/2009
ሐምሌ 2000	192.8	240.9	200.4	191.3	130.5	157.7	197.1	165.6	453.3	278.2	150.5	110.4	95.9	167.1	July 2008
ኤሌሌ 2000	204.3	262.0	209.4	205.7	127.9	164.0	194.2	171.8	431.3	201.0	150.2	112.2	95.9	217.1	August "
መስከረም 2001	204.4	262.4	210.2	232.1	127.8	163.3	186.2	176.2	409.0	198.8	151.1	112.5	95.9	171.2	September "
ጥቅምት 2001	205.4	265.4	209.4	240.2	127.8	172.2	185.4	171.7	352.0	200.4	152.8	112.1	95.3	169.9	October "
ኅዳር 2001	200.7	244.8	208.9	242.3	131.1	178.7	180.7	157.1	325.4	205.3	163.3	112.5	95.3	170.0	November "
ታህሳስ 2001	197.8	233.8	199.6	246.0	128.4	176.5	176.7	153.3	341.9	208.8	173.2	114.0	95.3	154.7	December "
ጥር 2001	195.8	228.0	187.5	243.9	130.9	176.6	177.5	181.4	271.3	236.2	168.9	114.5	95.3	161.1	January 2009
የኮቲት 2001	198.5	229.4	186.1	248.7	131.4	176.6	177.5	185.0	271.3	254.1	168.3	114.5	95.3	174.1	February "
መገቢት 2001	199.5	228.8	191.0	252.3	124.3	187.7	187.2	194.4	217.5	245.2	170.7	115.3	95.3	174.2	March "
ጊዳር 2001	198.5	229.6	190.9	243.5	129.0	190.3	183.4	191.2	179.6	227.6	172.8	116.0	95.3	188.5	April "
ግንቦት 2001	198.4	228.8	191.7	247.4	132.4	189.3	178.7	220.1	164.5	205.0	164.7	116.0	95.3	186.9	May "
ሰኔ 2001	198.0	229.5	188.1	248.0	137.8	202.2	177.6	228.5	165.6	201.7	154.9	117.7	95.3	186.5	June "

ሠንጠረዥ 8ለ፡- ጠቅላላ የምግብ ድርሰት የሽግግር ዋጋ መመዘኛ ኢንዱስትሪ ለጋምቤላ ስገቦች ክልል መገንጠያ
 ታህሳስ 1999 = 100

Table 8b: Consumer Price Index of Total Food and Its Components for the Gambela Peoples Regional State
 December 2006 = 100

ወርና ዓመት	ጠቅላላ ምግብ	እህል	በቤት ውስጥ የተወለዱ የምግብ ዓይነቶች			FOOD TAKEN AT HOME						ከቤት ውጪ የተወለዱ ምግቦች	Month and Year		
			ጥራጥራ	ባቦና ሌሎች የተዘጋጁ ምግቦች	ሥጋ	ወተት+ ዓይብና እንቁላል	ዘይትና ቅባቶች	እትክልትና ፍራፍራ	ቅመግ ቅመጥ	ደገኛና ሌሎች ሥራሥርቶች	ቆይታ ባናና ዝይ ቅጠል			ሌሎች ምግቦች	የግብረጫ አገልግሎት
ታህሳስ 1999	100.0	100.0	100.0	100.0	100.0	100.0	100.0	100.0	100.0	100.0	100.0	100.0	100.0	100.0	December 2006
ሐምሌ 1999 - ሰኔ 2000	133.8	124.8	141.2	167.1	131.8	131.5	150.1	138.5	411.3	142.3	124.0	112.4	110.4	133.2	July 2007 - June 2008
ሐምሌ 2000 - ሰኔ 2001	226.8	253.3	294.1	360.5	153.4	201.1	167.9	224.5	313.5	219.5	122.9	165.6	126.7	167.0	July 2008 - June 2009
2001															2007/2008
መገቢት 2000	134.4	121.9	134.8	138.4	131.0	128.4	163.5	137.1	425.8	193.7	132.5	123.4	115.5	132.7	March "
ጊዮርጊያ 2000	131.4	118.7	133.5	141.3	131.4	127.5	161.6	138.5	425.8	158.1	135.1	116.3	115.5	128.9	April "
ግንቦት 2000	151.6	135.3	188.5	317.5	142.3	128.4	167.8	162.0	425.8	167.6	131.1	133.2	115.5	140.3	May "
ሰኔ 2000	189.6	199.0	240.0	328.4	145.4	128.1	170.4	176.5	433.9	202.4	133.6	144.9	115.5	161.8	June "
2000															2008/2009
ሐምሌ 2000	248.8	314.2	274.3	339.8	142.7	140.9	171.0	185.4	433.9	219.8	134.2	157.7	115.5	166.8	July 2008
ኦገስት 2000	276.8	370.9	275.9	343.3	143.1	148.2	169.9	185.4	433.9	237.2	135.4	156.8	115.5	166.8	August "
መስከረም 2001	269.0	338.2	309.0	373.0	144.2	170.3	167.3	228.0	433.9	237.2	132.3	155.6	129.1	166.8	September "
ጥቅምት 2001	271.2	338.0	308.1	366.5	145.2	179.6	166.3	244.8	433.9	237.2	133.5	165.9	129.1	167.8	October "
ኅዳር 2001	224.5	233.8	319.8	366.7	163.0	209.0	170.0	235.2	433.9	237.2	133.7	166.4	129.1	166.8	November "
ታህሳስ 2001	200.8	196.0	281.7	371.3	159.6	268.0	166.5	227.1	304.1	213.0	123.4	157.7	129.1	166.8	December "
ጥር 2001	198.9	198.0	281.2	361.4	158.8	226.4	169.8	217.8	219.0	212.3	123.8	165.3	132.2	166.8	January 2009
የቀቲት 2001	198.5	196.7	281.3	354.0	159.9	212.5	170.1	222.2	219.0	219.8	110.3	172.1	132.2	166.8	February "
መገቢት 2001	197.6	195.1	285.0	359.2	159.4	207.1	168.2	222.3	219.0	211.9	112.4	171.5	134.4	167.1	March "
ጊዮርጊያ 2001	201.9	206.7	297.3	357.3	154.0	208.8	166.7	218.2	192.6	214.6	105.4	164.4	136.5	167.1	April "
ግንቦት 2001	212.9	221.0	307.7	361.7	154.8	219.6	165.5	245.7	221.2	196.4	113.7	173.7	122.3	166.8	May "
ሰኔ 2001	220.3	231.2	307.6	371.8	156.7	222.6	163.9	261.2	217.5	197.2	116.9	180.5	115.5	167.7	June "

ሠንጠረዥ ዓለ፡- ጠቅላላ የምግብ ክፍሎች የ ሽግግር ዋጋ መመዘኛ ሊንደክስ ለሰሪሪ ክልል መገንጠያ
 ታህሳስ 1999 = 100

Table 9b: Consumer Price Index of Total Food and Its Components for the Harari People Regional State
 December 2006 = 100

ወርና ዓመት	ጠቅላላ ምግብ	እህል	በቤት ውስጥ የተወለዱ የምግብ ዓይነቶች			FOOD TAKEN AT HOME							ከቤት ውጪ የተወለዱ ምግቦች	Month and Year	
			ጥራጥራ	ዳቦና ሌሎች የተዘጋጁ ምግቦች	ሥጋ	ወተት+ ዓይብና እንቁላል	ዘይትና ቅባቶች	እትክልትና ፍራፍራ	ቅመግ ቅመጦ	ደንችና ሌሎች ሥራሥርቶች	ቆፍትና ቆፍት	ሌሎች ምግቦች			የግብረ-ጊዜ አገልግሎት
	Food Total	Cereals	Pulses	Bread and other Prepared Food	Meat	Milk,Cheese and Egg	Oils and Fats	Vegetables and Fruits	Spices	Potatoes, Other Tubers and Stems	Coffee (beans, whole) and Tea Leaves	Other Food Items	Milling Charges	Food taken away from home	
ታህሳስ 1999	100.0	100.0	100.0	100.0	100.0	100.0	100.0	100.0	100.0	100.0	100.0	100.0	100.0	100.0	December 2006
ሐምሌ 1999 - ሰኔ 2000	130.4	128.3	129.6	124.0	112.4	120.7	160.5	154.9	312.5	182.1	119.6	101.4	101.9	123.1	July 2007 - June 2008
ሐምሌ 2000 - ሰኔ 2001	205.1	228.0	164.6	244.8	141.2	154.9	191.3	171.7	285.4	227.0	216.9	120.4	125.9	177.8	July 2008 - June 2009
2001															2007/2008
መገቢት 2000	134.9	130.5	133.1	139.2	111.9	122.7	179.0	137.2	314.5	277.8	115.7	110.4	100.0	132.6	March "
ጊዳር 2000	139.9	136.1	137.1	144.7	116.9	124.7	181.3	112.2	338.9	222.2	133.9	111.2	100.0	134.6	April "
ግንቦት 2000	169.0	169.3	144.3	162.8	123.7	144.8	194.6	120.9	362.8	222.2	204.1	107.9	107.7	142.7	May "
ሰኔ 2000	191.2	198.7	162.4	211.0	136.6	153.4	201.9	124.3	369.8	277.8	221.9	113.5	115.5	151.6	June "
2000															2008/2009
ሐምሌ 2000	201.0	232.6	156.0	239.9	140.0	170.4	201.5	147.8	408.5	318.9	179.6	114.9	115.5	164.0	July 2008
ኤሌ 2000	214.3	246.6	167.1	240.2	148.4	179.7	208.0	180.0	404.2	232.2	214.3	117.3	115.5	171.9	August "
መስከረም 2001	213.9	248.3	168.7	247.9	143.5	170.6	204.1	158.6	380.6	232.2	217.2	117.3	115.5	172.1	September "
ጥቅምት 2001	213.9	245.3	170.4	256.1	150.7	173.8	196.0	153.8	339.3	232.2	220.1	117.3	115.5	176.0	October "
ኅዳር 2001	207.3	234.4	163.7	252.1	138.9	171.7	189.0	155.7	326.5	232.2	210.9	121.4	115.5	180.1	November "
ታህሳስ 2001	198.7	225.3	161.3	249.3	141.1	130.3	186.0	162.1	305.5	217.2	190.6	121.9	133.3	184.1	December "
ጥር 2001	195.9	217.1	160.8	250.5	136.5	130.6	186.7	165.8	274.4	231.7	190.3	122.2	133.3	184.4	January 2009
የቀቲት 2001	202.8	217.1	165.2	248.9	135.4	131.3	192.6	169.1	245.7	231.7	229.8	122.2	133.3	177.8	February "
መገቢት 2001	201.9	217.4	161.1	243.9	139.0	137.5	191.6	165.8	216.7	231.1	229.7	122.2	133.3	178.0	March "
ጊዳር 2001	202.3	218.7	165.3	240.0	132.2	150.8	184.8	184.7	191.5	222.2	230.7	122.2	133.3	178.1	April "
ግንቦት 2001	202.6	213.3	169.5	240.1	140.2	154.3	178.5	205.7	178.0	175.6	238.2	123.8	133.3	178.7	May "
ሰኔ 2001	206.5	219.5	166.4	229.2	148.8	157.3	177.5	211.3	154.4	166.7	251.7	122.2	133.3	188.3	June "

ወገጠረዥ 10A:- ጠቅላላ የምግብ ወጪዎች የግንዛቤ ስርዓት የጋራ ስርዓት ለጋራ ስርዓት የጋራ ስርዓት
 ታህሳስ 1999 = 100

Table 10b: Consumer Price Index of Total Food and Its Components for the Oromiya Regional State
 December 2006 = 100

ወርና ዓመት	ጠቅላላ የምግብ	እህል	በቤት ውስጥ የተወሰኑ የምግብ ዓይነቶች			FOOD TAKEN AT HOME					ክፍት ወጪ የተወሰኑ የምግቦች	ክፍት ወጪ የተወሰኑ የምግቦች	Month and Year		
			ጥራጥረ	ባቡና ሌሎች የተዘጋጁ የምግቦች	ሥጋ	ወተት+ ዓይብና እንቁላል	ዘይትና ቅባቶች	እትክልትና ፍራፍረ	ቅመግ ቅመጥ	ደንችና ሌሎች ሥራሥርቶች				ያልተቆላ ቡናና ሻይ ቅጠል	ሌሎች የምግቦች
ታህሳስ 1999	100.0	100.0	100.0	100.0	100.0	100.0	100.0	100.0	100.0	100.0	100.0	100.0	100.0	100.0	December 2006
ሐምሌ 1999 - ሰኔ 2000	138.7	137.3	127.0	147.9	119.9	116.4	151.9	147.1	379.6	134.7	121.9	102.5	118.2	122.6	July 2007 - June 2008
ሐምሌ 2000 - ሰኔ 2001	202.0	242.8	175.2	238.0	152.0	155.2	163.5	176.6	314.2	204.1	142.0	161.6	133.9	156.2	July 2008 - June 2009
2001															2007/2008
ጠቅላላ 2000	151.5	150.3	134.5	163.3	124.9	128.0	164.8	189.4	402.9	154.4	125.8	115.4	123.0	127.9	March "
ጧምታ 2000	154.4	154.4	137.3	165.3	126.3	130.6	169.2	189.5	406.4	159.6	126.6	107.0	124.0	130.1	April "
ግንቦት 2000	173.3	190.7	147.0	173.7	136.7	136.2	182.9	194.3	407.9	163.6	131.9	115.1	128.7	133.1	May "
ሰኔ 2000	201.0	245.1	171.1	205.6	145.8	141.3	181.9	143.5	460.3	190.4	138.8	123.8	129.0	141.2	June "
2000															2008/2009
ሐምሌ 2000	223.8	295.1	183.9	224.9	148.7	142.9	182.5	147.2	477.1	190.4	134.4	133.8	133.6	142.9	July 2008
ኤሌ 2000	224.8	297.5	177.1	242.0	149.6	143.8	171.5	154.4	478.1	191.1	131.6	145.7	132.3	146.6	August "
መስከረም 2001	226.0	297.2	180.2	243.1	153.0	152.3	180.3	157.3	465.7	186.8	135.4	145.6	133.7	147.8	September "
ጥቅምት 2001	217.9	282.4	181.3	247.3	151.7	154.9	175.3	155.5	399.9	181.8	135.6	142.2	132.1	151.4	October "
ኅዳር 2001	204.1	252.4	178.8	250.2	151.3	153.1	168.9	154.1	356.2	181.7	138.2	149.2	129.7	152.0	November "
ታህሳስ 2001	183.9	212.1	161.5	234.3	149.5	144.4	159.5	152.5	312.1	182.8	139.9	152.5	127.2	151.5	December "
ጥር 2001	188.9	216.5	163.7	236.9	149.6	152.9	157.7	174.4	261.4	208.1	142.4	168.8	129.4	159.3	January 2009
የቀቲት 2001	190.0	215.8	172.2	242.5	152.0	157.5	153.7	180.7	236.6	214.7	145.0	175.4	132.0	159.1	February "
ጠቅላላ 2001	189.3	210.3	169.2	236.7	151.7	155.2	155.7	205.8	209.1	225.1	150.9	176.9	132.1	163.4	March "
ጧምታ 2001	191.1	210.5	175.7	225.7	156.3	161.9	153.8	208.7	208.3	230.8	152.5	180.4	138.3	166.1	April "
ግንቦት 2001	189.4	208.3	181.5	234.8	156.1	168.5	153.0	211.2	190.9	213.9	149.1	184.9	141.1	165.7	May "
ሰኔ 2001	194.5	215.9	177.0	237.8	154.3	174.9	149.7	216.9	175.0	241.6	149.2	183.7	144.9	168.7	June "

ወንጠራዎች 11A:- ጠቅላላ የምግብ ድርሰት የ ሽግግር ዋጋ መመዘኛ ኢንዱስትሪ ለገቢዎች ክልል መገንጠያ
 ታህሳስ 1999 = 100

Table 11b: Consumer Price Index of Total Food and Its Components for the SNNP Regional State
 December 2006 = 100

ወርና ዓመት	ጠቅላላ ምግብ	እህል	በቤት ውስጥ የተወለዱ የምግብ ዓይነቶች			FOOD TAKEN AT HOME						ከቤት ውጭ የተወለዱ ምግቦች	Month and Year		
			ጥራጥራ	ባቡና ሌሎች የተዘጋጁ ምግቦች	ሥጋ	ወተት+ ዓይብና እንቁላል	ዘይትና ቅባቶች	አትክልትና ፍራፍራ	ትመግ ቅመም	ደንችና ሌሎች ሥራሥርቶች	ቃልተቆላ ቡናና ያይ ቅጠል			ሌሎች ምግቦች	የግብረግ አገልግሎት
	Food Total	Cereals	Pulses	Bread and other Prepared Food	Meat	Milk,Cheese and Egg	Oils and Fats	Vegetables and Fruits	Spices	Potatoes, Other Tubers and Stems	Coffee (beans, whole) and Tea Leaves	Other Food Items	Milling Charges	Food taken away from home	
ታህሳስ 1999	100.0	100.0	100.0	100.0	100.0	100.0	100.0	100.0	100.0	100.0	100.0	100.0	100.0	100.0	December 2006
ሐምሌ 1999 - ሰኔ 2000	131.1	136.1	122.9	126.9	121.5	119.2	143.7	146.8	264.5	117.1	132.2	112.2	106.0	107.1	July 2007 - June 2008
ሐምሌ 2000 - ሰኔ 2001	189.3	237.2	156.7	220.2	152.6	159.1	167.3	156.8	227.9	173.1	145.0	175.6	121.2	127.3	July 2008 - June 2009
2001															2007/2008
መገቢት 2000	142.8	147.1	124.8	126.2	125.1	125.4	168.7	201.7	269.4	128.2	142.0	125.6	111.2	108.1	March "
ጊደር 2000	148.0	156.3	127.7	127.1	129.3	129.1	168.7	202.7	284.0	131.0	144.7	125.3	112.7	111.4	April "
ግንቦት 2000	160.4	184.8	133.0	139.8	134.4	131.8	174.8	201.0	293.1	135.1	147.2	129.8	114.0	111.5	May "
ሰኔ 2000	199.4	265.9	147.1	202.5	150.2	144.0	165.5	191.1	328.8	164.8	149.5	140.6	120.2	116.5	June "
2000															2008/2009
ሐምሌ 2000	214.7	316.3	148.1	202.8	153.2	141.0	164.5	132.2	349.1	164.3	154.3	148.2	120.2	121.7	July 2008
ኤሌ 2000	214.0	311.2	152.3	207.6	156.8	145.1	163.2	137.6	342.5	163.7	157.1	157.0	122.4	121.3	August "
መስከረም 2001	215.4	309.2	152.2	214.1	162.1	151.7	169.1	142.5	325.0	169.0	159.1	161.2	119.6	123.4	September "
ጥቅምት 2001	201.6	270.1	151.6	225.1	162.2	152.8	169.6	140.5	285.2	171.3	160.0	160.4	119.9	124.0	October "
ኅዳር 2001	186.0	232.7	150.7	234.1	153.2	153.3	165.2	134.6	255.8	167.9	148.7	169.9	118.6	124.5	November "
ታህሳስ 2001	173.5	199.2	158.6	237.0	150.1	153.9	161.7	141.0	225.7	168.6	131.0	173.4	117.5	128.9	December "
ጥር 2001	173.1	200.6	158.7	220.4	149.0	157.8	160.5	145.6	197.0	169.9	129.6	179.9	116.7	128.4	January 2009
የኮቲት 2001	174.9	194.8	159.5	218.9	142.6	171.2	161.7	166.8	168.2	180.8	139.5	191.3	123.5	129.8	February "
መገቢት 2001	175.4	194.1	162.5	218.7	144.1	166.0	162.0	172.1	167.9	182.8	138.4	191.6	123.2	130.1	March "
ጊደር 2001	180.2	202.7	161.6	215.8	148.1	166.9	184.3	181.8	166.3	184.7	139.6	190.6	121.7	131.2	April "
ግንቦት 2001	180.2	205.6	160.9	223.1	153.5	175.3	174.4	191.7	125.7	178.0	139.1	193.1	126.0	131.7	May "
ሰኔ 2001	182.1	209.6	163.3	225.0	156.8	174.2	171.7	195.8	126.8	176.3	143.1	190.2	124.8	132.9	June "

ሠንጠረዥ 12b:- ጠቅላላ የምግብ ክፍሎች የ ሽግግር ዋጋ መለኪያ ለጊዜያዊ ስራዎች ለሌላው ስራዎች ለምሳሌ ለምግብ ስራዎች
 ታህሳስ 1999 = 100

Table 12b: Consumer Price Index of Total Food and Its Components for the Somali Regional State
 December 2006 = 100

ወርና ዓመት	ጠቅላላ ምግብ	እህል	በቤት ውስጥ የተወለሱ የምግብ ዓይነቶች			FOOD TAKEN AT HOME							ከቤት ውጭ የተወለሱ ምግቦች	Month and Year	
			ጥራጥራ	ባባና ሌሎች የተዘጋጁ ምግቦች	ሥጋ	ወተት+ ዓይብና እንቁላል	ዘይትና ቅባቶች	እትክልትና ፍራፍራ	ትመግ ቅመም	ደንችና ሌሎች ሥራሥርቶች	ቃልተቆላ ቤናና ያይ ቅጠል	ሌሎች ምግቦች			የግብረግ አገልግሎት
	Food Total	Cereals	Pulses	Bread and other Prepared Food	Meat	Milk,Cheese and Egg	Oils and Fats	Vegetables and Fruits	Spices	Potatoes, Other Tubers and Stems	Coffee (beans, whole) and Tea Leaves	Other Food Items	Milling Charges	Food taken away from home	
ታህሳስ 1999	100.0	100.0	100.0	100.0	100.0	100.0	100.0	100.0	100.0	100.0	100.0	100.0	100.0	100.0	December 2006
ሐምሌ 1999 - ሰኔ 2000	124.6	136.0	124.9	120.3	126.3	103.1	138.8	128.3	299.8	145.0	115.8	102.8	99.2	120.5	July 2007 - June 2008
ሐምሌ 2000 - ሰኔ 2001	195.9	246.5	175.9	207.5	167.3	171.8	175.4	163.7	272.0	220.7	149.0	152.1	110.4	157.8	July 2008 - June 2009
2001															2007/2008
መገቢት 2000	133.2	141.5	133.3	125.7	130.5	111.0	153.0	139.0	283.3	196.5	129.9	117.6	101.6	123.6	March "
ጊደር 2000	136.3	145.6	136.3	126.6	130.0	112.9	160.9	134.9	291.7	196.1	135.0	118.6	103.3	122.8	April "
ግንቦት 2000	149.3	170.3	142.4	137.6	139.4	125.5	165.6	134.2	297.3	208.7	139.8	117.8	100.0	127.3	May "
ሰኔ 2000	171.1	219.8	172.5	164.5	147.1	142.6	180.8	111.1	308.3	259.7	124.5	124.9	106.2	141.2	June "
2000															2008/2009
ሐምሌ 2000	198.2	285.6	182.0	189.9	158.7	137.5	184.8	144.9	369.4	276.6	119.1	125.9	106.2	150.9	July 2008
ኤሌ 2000	208.6	301.8	190.3	200.9	162.2	159.7	186.2	162.7	388.9	221.6	119.3	130.2	104.8	149.6	August "
መስከረም 2001	212.0	300.3	192.3	205.4	163.7	164.4	182.9	165.2	333.3	190.0	126.3	156.5	106.3	151.2	September "
ጥቅምት 2001	202.5	275.9	190.2	211.8	162.1	166.2	178.3	168.0	333.3	195.2	120.3	156.6	110.1	152.1	October "
ኅዳር 2001	193.3	255.1	187.7	210.5	161.2	151.1	178.3	161.5	241.7	206.0	127.6	157.0	108.4	156.4	November "
ታህሳስ 2001	170.6	197.2	163.3	196.3	150.0	154.5	170.5	141.3	250.0	213.9	132.3	156.9	107.7	156.1	December "
ጥር 2001	185.4	217.0	163.9	204.8	168.4	170.2	167.8	159.7	250.0	225.1	158.0	156.7	102.5	149.7	January 2009
የካቲት 2001	194.0	227.8	166.1	214.3	169.3	180.6	175.2	149.1	250.0	216.5	172.2	157.3	104.4	156.7	February "
መገቢት 2001	191.1	222.5	166.1	218.1	165.0	178.4	170.5	159.5	238.8	232.5	166.5	156.6	116.7	162.4	March "
ጊደር 2001	194.6	218.7	169.4	215.7	179.8	204.8	170.8	166.1	225.0	241.6	171.5	157.0	116.7	165.3	April "
ግንቦት 2001	196.3	226.2	167.0	215.7	187.2	192.1	169.2	182.6	208.3	230.7	171.7	157.4	117.0	167.5	May "
ሰኔ 2001	203.8	230.0	172.1	206.0	180.1	201.6	170.3	204.4	175.0	199.1	202.7	157.2	124.3	175.6	June "

ወጠረጃ 13b:- ጠቅላላ የምግብ ክፍሎች የ ሽንጃዎች ዋጋ መጠኛ ሊንደክስ ለትግራይ ክልል መገንጠያ ታህሳስ 1999 = 100

Table 13b: Consumer Price Index of Total Food and Its Components for the Tigray Regional State
December 2006 = 100

ወርና ዓመት	ጠቅላላ ምግብ	እህል	በቤት ውስጥ የተወለዱ የምግብ ዓይነቶች			FOOD TAKEN AT HOME					ክፍት ውጪ የተወለዱ ምግቦች	ክስት ውጪ የተወለዱ ምግቦች	Month and Year		
			ጥራጥራ	ዳቦና ሌሎች የተዘጋጁ ምግቦች	ሥጋ	ወተት+ ዓይብና እንቁላል	ዘይትና ቅባቶች	አትክልትና ፍራፍራ	ቅመግ ቅመጥ	ደገችና ሌሎች ሥራሥርቶች				ቃልተቆላ ቦናና ዛይ ቅጠል	ሌሎች ምግቦች
ታህሳስ 1999	100.0	100.0	100.0	100.0	100.0	100.0	100.0	100.0	100.0	100.0	100.0	100.0	100.0	100.0	December 2006
ሐምሌ 1999 - ሰኔ 2000	143.4	138.5	129.3	126.5	122.8	114.8	166.5	122.5	345.0	149.0	127.1	104.2	113.7	124.7	July 2007 - June 2008
ሐምሌ 2000 - ሰኔ 2001	214.8	254.3	180.2	200.9	140.6	158.9	186.5	155.0	287.1	216.1	147.2	156.4	131.2	161.2	July 2008 - June 2009
2001															2007/2008
መገቢት 2000	155.2	158.3	133.1	133.5	120.3	116.5	194.9	102.4	342.4	183.7	135.9	111.6	119.1	129.2	March "
ጊደር 2000	156.5	160.2	132.5	130.1	123.9	118.1	197.0	102.6	341.6	186.8	138.4	108.6	119.7	130.2	April "
ግንቦት 2000	166.7	173.5	139.8	139.3	131.4	125.7	204.1	106.1	355.4	212.8	144.3	116.0	121.0	135.2	May "
ሰኔ 2000	207.2	240.0	162.2	179.8	137.3	135.0	207.0	104.7	394.0	210.1	150.1	125.8	120.0	149.2	June "
2001															2008/2009
ሐምሌ 2000	230.2	279.5	169.2	192.0	137.1	146.5	200.2	116.8	422.1	195.2	150.4	130.7	120.7	151.3	July 2008
ኤሌ 2000	237.7	284.9	179.7	206.0	138.6	150.1	200.0	151.1	447.1	216.3	153.9	149.2	122.8	153.5	August "
መስከረም 2001	244.3	293.5	193.7	198.8	148.1	154.7	202.9	180.7	422.5	211.9	146.7	147.1	124.6	161.7	September "
ጥቅምት 2001	241.1	289.5	202.2	201.6	141.4	161.2	195.2	169.4	410.8	197.4	140.9	140.4	123.9	165.1	October "
ኅዳር 2001	223.4	268.0	190.8	207.8	137.5	162.7	182.6	142.7	336.1	220.3	141.8	141.2	133.0	155.8	November "
ታህሳስ 2001	206.8	241.9	174.6	192.8	136.9	160.8	185.5	135.4	300.4	212.3	142.8	145.3	133.0	158.2	December "
ጥር 2001	200.8	235.7	165.5	191.5	140.3	157.8	179.8	138.6	254.4	203.1	139.9	159.2	125.2	158.8	January 2009
የካቲት 2001	200.2	235.4	173.7	195.4	139.3	159.7	180.4	150.8	193.1	208.3	148.6	170.3	134.2	164.4	February "
መገቢት 2001	203.3	240.4	183.8	193.1	135.3	159.6	181.2	164.3	174.1	226.0	148.2	170.5	138.3	168.7	March "
ጊደር 2001	203.7	243.8	178.1	200.8	138.8	160.4	176.3	163.8	158.8	236.6	152.0	169.3	137.2	162.7	April "
ግንቦት 2001	191.6	217.2	177.7	214.4	144.3	161.7	179.2	177.1	161.7	229.5	149.2	176.3	138.8	164.1	May "
ሰኔ 2001	194.3	221.5	173.0	216.1	149.2	171.8	174.9	169.6	163.6	236.6	151.8	177.5	143.1	169.7	June "

General CPI for Country Level and Major Regions

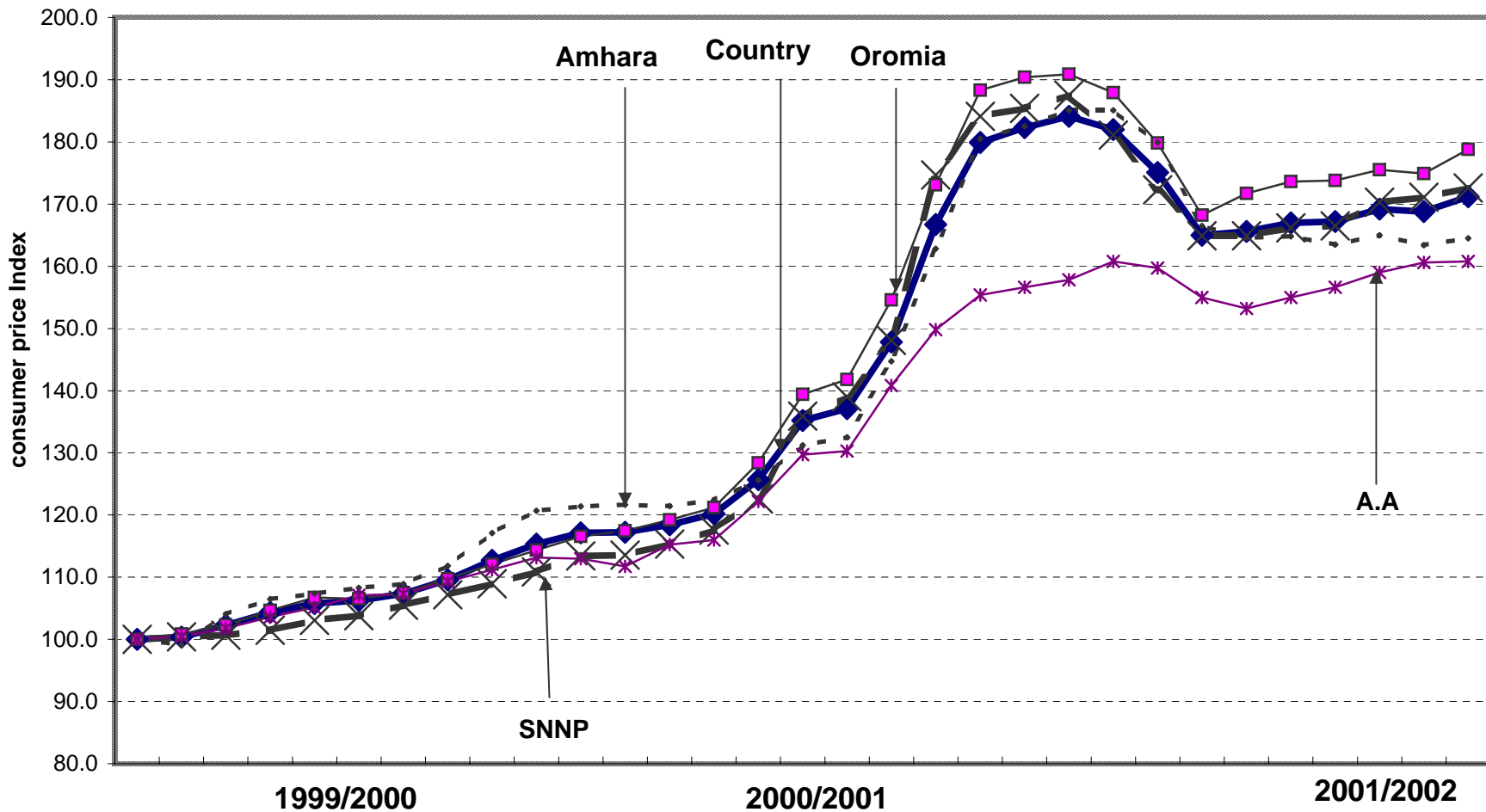
ጠቅላላ የሽማግብር ዋጋ ኢንዱክስ ለአገር አቀፍና ለዋና ዋና ክልሎች

2007/2008

2008/2009

2009/2010

D J F M A M J J A S O N D J F M A M J J A S O N D J F M A M J



የሽማግብር ዋጋ መመዘኛ ኢንዱክስ

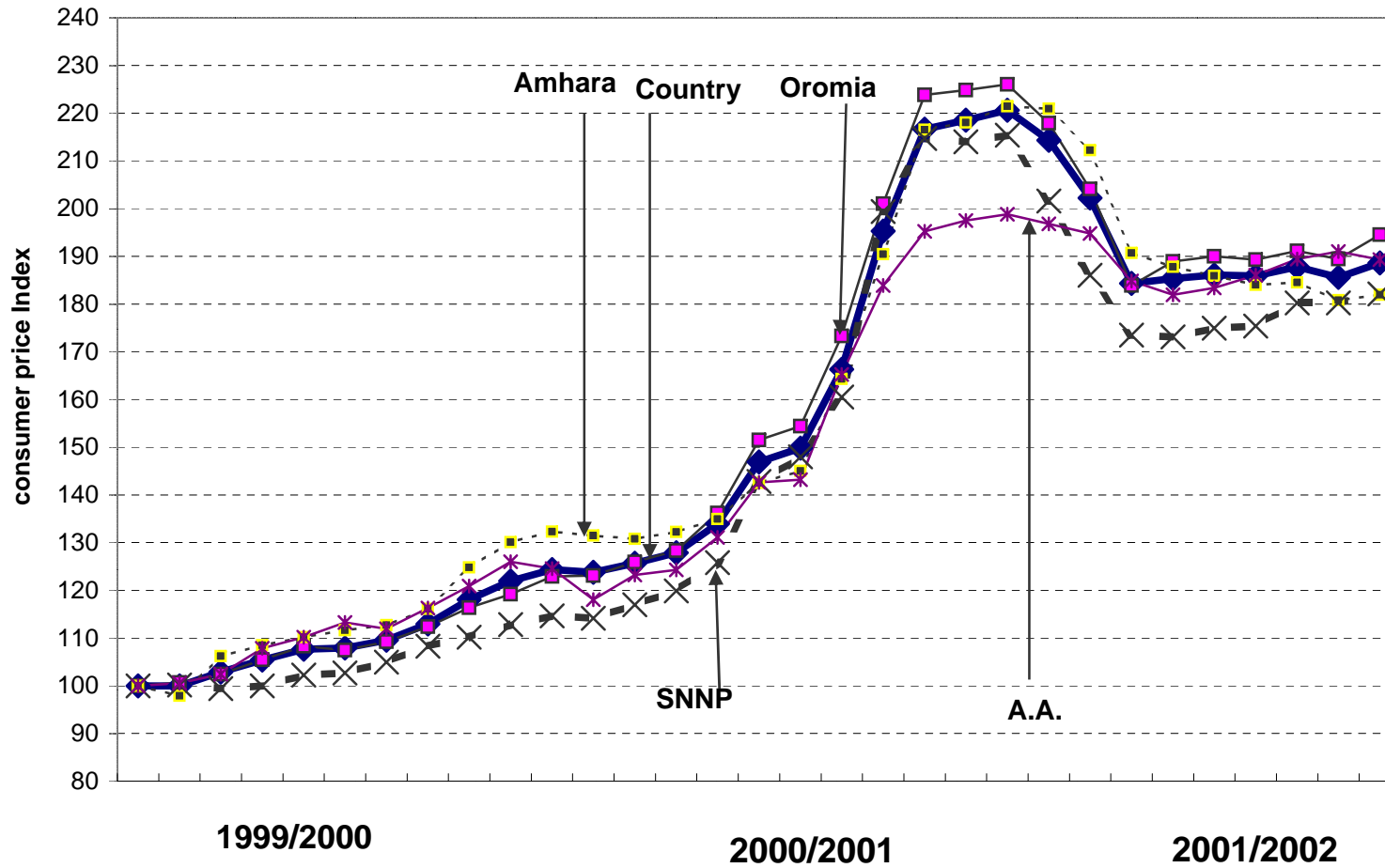
Food CPI for Country Level and Major Regions
የምግብ የሽያጭ ዋጋ ኢንዱክስ ለአገር አቀፍና ለዋና ዋና ክልሎች

2007/2008

2008/2009

2009/2010

D J F M A M J J A S O N D J F M A M J J A S O N D J F M A M J



የሽያጭ ዋጋ መመዘኛ ኢንዱክስ