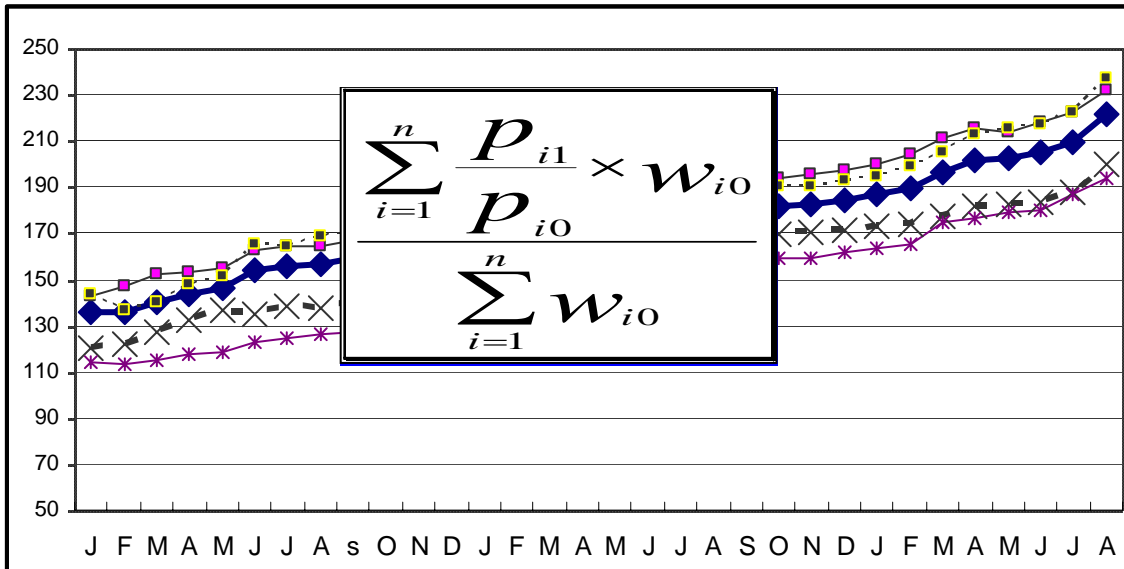


በኢትዮጵያ ፌዴራላዊ ዲሞክራሲያዊ ሪፐብሊክ
የማዕከላዊ ስታቲስቲክስ ኤጀንሲ

THE FEDERAL DEMOCRATIC REPUBLIC OF ETHIOPIA
CENTRAL STATISTICAL AGENCY

የአገር አቀፍና የክልሎች የሽማግሌት ዋጋ መመዘኛ ኢንዱክሶች
የሐምሌ ወር 2001 ዓ.ም.
[ታህሳስ 1999 = 100]
መረጃ ቁጥር 22

COUNTRY AND REGIONAL LEVEL CONSUMER PRICE INDICES



[December 2006 = 100]

For the month of July 2009

Information No. 22

አዲስ አበባ

ነሐሴ 4 ቀን 2001 ዓ.ም.

ADDIS ABABA

10 August 2009

Tel: 251-11-1 553011

Fax: 251-11-1550334.

Email: csa@ethionet.et

CONTENTS

	Page
Introduction.....	4
Inflation Rate.....	8
Comparison of CPI Movements, Current Vs Last Year's Similar Months, at country Level.....	10
Comparison of CPI Movements, Current Vs Last Year's Similar Months, at country and Regional Levels.....	11

List of Tables

Table a: Number of Markets Covered and Basket of Commodities by Region.....	2
Table 1a: General Consumer Price Index and Its Components at Country Level.....	13
Table 1b: Consumer Price Index of Total Food and Its Components at Country Level.....	14
Table 1c: Consumer Price Index of House Rent, Construction Materials, Water, Fuel and Power and Its Components at Country Level.....	15
Table 2a: Summary of General Consumer Price Indices at Country and Regional Levels.....	16
Table 2b: Summary of Consumer Price Indices of Food at Country and Regional Levels.....	18
Table 3a: General Consumer Price Index and Its Components for the City of Addis Ababa Administration.....	20
Table 3b: Consumer Price Index of Total Food and Its Components for the City of Addis Ababa Administration.....	21
Table 4a: General Consumer Price Index and Its Components for the Afar Regional State.....	22
Table 4b: Consumer Price Index of Total Food and Its Components for the Afar Regional State.....	23
Table 5a: General Consumer Price Index and Its	

Components for the Amhara Regional State.....	24
Table 5b: Consumer Price Index of Total Food and Its	
Components for the Amhara Regional State.....	25
Table 6a: General Consumer Price Index and Its	
Components for the Benishangul-Gumuz Regional State.....	26
Table 6b: Consumer Price Index of Total Food and Its	
Components for the Benishangul-Gumuz Regional State.....	27
Table 7a: General Consumer Price Index and Its	
Components for the Dire Dawa Administrative Council.....	28
Table 7b: Consumer Price Index of Total Food and Its	
Components for the Dire Dawa Administrative Council.....	29
Table 8a: General Consumer Price Index and Its	
Components for the Gambela Peoples Regional State.....	30
Table 8b: Consumer Price Index of Total Food and Its	
Components for the Gambela Peoples Regional State.....	31
Table 9a: General Consumer Price Index and Its	
Components for the Harari Peoples Regional State.....	32
Table 9b: Consumer Price Index of Total Food and Its	
Components for the Harari Peoples Regional State.....	33
Table 10a: General Consumer Price Index and Its	
Components for the Oromia Regional State.....	34
Table 10b: Consumer Price Index of Total Food and Its	
Components for the Oromia Regional State.....	35
Table 11a: General Consumer Price Index and Its	
Components for the SNNP Regional State.....	36
Table 11b: Consumer Price Index of Total Food and Its	
Components for the SNNP Regional State.....	37
Table 12a: General Consumer Price Index and Its	
Components for the Somali Regional State.....	38
Table 12b: Consumer Price Index of Total Food and Its	
Components for the Somali Regional State.....	39
Table 13a: General Consumer Price Index and Its	
Components for the Tigray Regional State.....	40
Table 13b: Consumer Price Index of Total Food and Its	
Components for the Tigray Regional State.....	41

Introduction

The Consumer Price Index (CPI) measures the average change in the price paid by consumers for a fixed market basket of goods and services. It is usually based on household expenditure weights of the goods and services in the basket and their current market prices. The twelve CPI's (i.e., the CPI's of the 11 Regions and the CPI at Country Level) presented in this report are based on the results of the Household Income, Consumption and Expenditure Survey (HICES) conducted by the Central Statistical Agency in 2004/2005 from which expenditure weights are derived for major household goods and services of that period and adjusted using the December 2006 retail prices of the goods and services as a base period.

The December 2006 based CPI updates the previous CPI series (i.e. December 2000 based) and the newly selected baskets are more diversified and the weights are more accurate. It also showed various improvements and incorporates non-food index as an independent group. The new series is constructed for country as a whole and Regional States including Dire Dawa and the Addis Ababa City Administration. However, similar indices had been utilized at Addis Ababa Level since 1963 and at Country, Urban and Rural Levels since 1995/96 and in Country and Regional level since 2000.

All the twelve general indices are divided into two major groups that is food and non-food index. The non-food index has ten major groups each, namely: Beverages; Cigarettes and Tobacco; Clothing and Footwear; House Rent, Construction Materials, Water, and Fuel and Power; Furniture, Furnishing, Household Equipment and Operation; Medical Care and Health; Transport and Communication; Recreation, Entertainment and Education; Personal Care and Effects; and Miscellaneous Goods and Services. On the other hand, the Food Index has 13 sub-groups. These are: Cereals; Pulses; Bread and Other Prepared Food; Meat; Milk, Cheese and Eggs; Vegetables and

Fruits; Oil and Fats Spices; Potatoes, Other Tubers and Stems; Coffee Beans (whole) and Tea Leaves; Other Food Items; Milling Charges; and Food taken Away from Home. Furthermore, the new CPI based on December 2006 includes more detailed #Housing, Construction materials, Water and Fuel and Power; components.

For the construction of the current consumer price indices, up to date data on retail prices are collected in the purposely selected sample market places located in representative urban centers in each zone/special weredas of the country. Hence, a total of 119 market places were selected for the retail price survey. In each market place an enumerator is assigned to undertaking the data collection activities. The price data is collected from the 1st day through 15th days of European Calendar month under consideration. To calculate the monthly regional consumer price indices, geometric means of prices of the specific regions are used. The distribution of the market place of each region and items included in the basket of commodities are given on Table A on page 2.

An important factor in constructing a Consumer Price Index is to select the representative basket of goods and services. Including all consumption items into the market basket of goods and services is both cumbersome and unnecessarily costly in term of data collection and processing. Furthermore, it doesn't make sense to include an insignificant weight into an index basket which could not move the price relative up or downwards compared to the general market trend. As a result, basket of goods and services included in the regional baskets are determined by expenditure cut-off point. The total numbers of items included in the regional basket in the December 2006 based indices are given in Table A on page 2.

Country level CPI aggregates the regional group indices and the contributions of the five relatively big regions in terms of the magnitude of the expenditure account for more than 95 percent. These regions are Oromiya, Amhara, SNNP, Addis Ababa and Tigray. On the other hand, the contributions of the remaining regions to the

Country Level Consumer Price Index is about five percent.

According to the weights for food and non-food groups in Table B below, the December 2006 based CPI is about 57 percent of household expenditure spent on the food component, which declined by 3 percentage points as compared to the December 2000 based CPI. On the other hand, the expenditure on non-food components increased from 40 percent to 43 percent. This indicates that the economic situation in the country is going in the right direction as postulated by economic theory. Similarly, in this period larger regions resulted in a substantial decrease in the average weights for food, despite the increased food taken out of home. It was offset mainly by an increase in housing, construction materials, water and fuel and power, furnishing and transport and communication.

Table B: Major groups in the 2000 and 2006 based CPI and their weights at Country Level

No.	Major Group	Weights	
		2000 based CPI	2006 based CPI
1	Food	0.6008	0.5701
2	Non-Food	0.3992	0.4299
3	Beverages	0.0201	0.0202
4	Cigarettes and Tobacco	0.0051	0.0048
5	Clothing and Footwear	0.0926	0.0832
6	House Rent, Construction Materials, Water and Fuel and Power	0.1544	0.2056
7	Furniture, Furnishing, Household Equipment and Operation	0.0494	0.0375
8	Medical Care and Health	0.0120	0.0111
9	Transport and Communication	0.0199	0.0249
10	Recreation, Entertainment and Education	0.0101	0.0109
11	Personal Care and Effects	0.0092	0.0083
12	Miscellaneous Goods	0.0264	0.0234
	Total	1.000	1.000

መግቢያ..... 1
የወሩ ዋጋ ግሽበት ሁኔታ 7

የዘንድሮውና የአምናው ተመሳሳይ ወሮች የሽማቾች ዋጋ መመዘኛ ጠቋሚ አሀዝ ንፅፅር በአገር አቀፍ ደረጃ 10

የዘንድሮውና የአምናው ተመሳሳይ ወሮች የሽማቾች ዋጋ መመዘኛ ጠቋሚ አሀዝ ንፅፅር በአገር አቀፍና በክልሎች ደረጃ..... 11

የሠንጠረዦች ዝርዝር

ሠንጠረዥ ሀ፡ በጥናቱ የተሸፈኑ ገበያዎችና በኢንዱስትሪ ማዕቀፍ የተካተቱ ዕቃዎችና በዕቃዎች/አገልግሎቶች ብዛት በክልል..... 2

ሠንጠረዥ 1ሀ፡ ጠቅላላ የሽማቾች ዋጋ መመዘኛ ኤንደክስና በስሩ የተካተቱ ክፍሎች በአገር አቀፍ ደረጃ..... 13

ሠንጠረዥ 1ለ፡ ጠቅላላ ምግብና የምግብ ክፍሎች የሽማቾች ዋጋ መመዘኛ ኤንደክስ በአገር አቀፍ ደረጃ..... 14

ሠንጠረዥ 1ሐ፡ አገር አቀፍ የቤት ኪራይ፣ የቤት መስሪያ ዕቃዎች፣ ውሃና ኬነርጂ የሽማቾች ዋጋ መመዘኛ ኤንደክስ 15

ሠንጠረዥ 2ሀ፡ ጠቅላላ የሽማቾች ዋጋ መመዘኛ ኤንደክስ በአገር አቀፍና በክልሎች ደረጃ 16

ሠንጠረዥ 2ለ፡ የምግብ ዋጋ መመዘኛ ኤንደክስ ማጠቃለያ በአገር አቀፍ እና በክልሎች ደረጃ 18

ሠንጠረዥ 3ሀ፡ ጠቅላላ የሽማቾች ዋጋ መመዘኛ ኤንደክስና በስሩ የተካተቱ ክፍሎች ለአዲስ አበባ ከተማ መስተዳድር 20

ሠንጠረዥ 3ለ፡ ጠቅላላ ምግብና የምግብ ክፍሎች የሽማቾች ዋጋ መመዘኛ ኤንደክስ ለአዲስ አበባ ከተማ መስተዳድር 21

ሠንጠረዥ 4ሀ፡ ጠቅላላ የሽማቾች ዋጋ መመዘኛ ኤንደክስና በስሩ የተካተቱ ክፍሎች ለአፋር ክልላዊ መንግስት..... 22

ሠንጠረዥ 4ለ፡ ጠቅላላ ምግብና የምግብ ክፍሎች የሽማቾች ዋጋ መመዘኛ ኤንደክስ ለአፋር ክልላዊ መንግስት..... 23

ሠንጠረዥ 5ሀ፡ ጠቅላላ የሽማቾች ዋጋ መመዘኛ ኤንደክስና በስሩ የተካተቱ ክፍሎች ለአማራ ክልላዊ መንግስት..... 24

ሠንጠረዥ 5ለ፡ ጠቅላላ ምግብና የምግብ ክፍሎች የሽማቾች ዋጋ መመዘኛ ኤንደክስ ለአማራ ክልላዊ መንግስት..... 25

ሠንጠረዥ 6ሀ፡ ጠቅላላ የሽማቾች ዋጋ መመዘኛ ኤንደክስና በስሩ የተካተቱ ክፍሎች ለቤንሻንጉል-ጉሙዝ ክልላዊ መንግስት..... 26

ሠንጠረዥ 6ለ፡ ጠቅላላ ምግብና የምግብ ክፍሎች የሽማቾች ዋጋ መመዘኛ ለቤንሻንጉል-ጉሙዝ ክልላዊ መንግስት..... 27

ሠንጠረዥ 7ሀ: ጠቅላላ የሸማቾች ዋጋ መመዘኛ ኤንደክስና በስሩ የተካተቱ ክፍሎች ለድሬደዋ አስተዳደር ካውንስል	28
ሠንጠረዥ 7ለ: ጠቅላላ ምግብና የምግብ ክፍሎች የሸማቾች ዋጋ መመዘኛ ለድሬደዋ አስተዳደር ካውንስል	29
ሠንጠረዥ 8ሀ: ጠቅላላ የሸማቾች ዋጋ መመዘኛ ኤንደክስና በስሩ የተካተቱ ክፍሎች ለጋምቤላ ህዝቦች ክልላዊ መንግስት	30
ሠንጠረዥ 8ለ: ጠቅላላ ምግብና የምግብ ክፍሎች የሸማቾች ዋጋ መመዘኛ ለጋምቤላ ህዝቦች ክልላዊ መንግስት	31
ሠንጠረዥ 9ሀ: ጠቅላላ የሸማቾች ዋጋ መመዘኛ ኤንደክስና በስሩ የተካተቱ ክፍሎች ለለሐረሪ ህዝብ ክልላዊ መንግስት	32
ሠንጠረዥ 9ለ: ጠቅላላ ምግብና የምግብ ክፍሎች የሸማቾች ዋጋ መመዘኛ ኤንደክስ ለለሐረሪ ህዝብ ክልላዊ መንግስት	33
ሠንጠረዥ 10ሀ: ጠቅላላ የሸማቾች ዋጋ መመዘኛ ኤንደክስና በስሩ የተካተቱ ክፍሎች ለአሮሚያ ክልላዊ መንግስት	34
ሠንጠረዥ 10ለ: ጠቅላላ ምግብና የምግብ ክፍሎች የሸማቾች ዋጋ መመዘኛ ኤንደክስ ለአሮሚያ ክልላዊ መንግስት	35
ሠንጠረዥ 11ሀ: ጠቅላላ የሸማቾች ዋጋ መመዘኛ ኤንደክስና በስሩ የተካተቱ ክፍሎች ለደ.ኢ.ብ.ብ.ሀ ክልላዊ መንግስት	36
ሠንጠረዥ 11ለ: ጠቅላላ ምግብና የምግብ ክፍሎች የሸማቾች ዋጋ መመዘኛ ኤንደክስ ለደ.ኢ.ብ.ብ.ሀ ክልላዊ መንግስት	37
ሠንጠረዥ 12ሀ: ጠቅላላ የሸማቾች ዋጋ መመዘኛ ኤንደክስና በስሩ የተካተቱ ክፍሎች ለሶማሌ ክልላዊ መንግስት	38
ሠንጠረዥ 12ለ: ጠቅላላ ምግብና የምግብ ክፍሎች የሸማቾች ዋጋ መመዘኛ ኤንደክስ ለሶማሌ ክልላዊ መንግስት	39
ሠንጠረዥ 13ሀ: ጠቅላላ የሸማቾች ዋጋ መመዘኛ ኤንደክስና በስሩ የተካተቱ ክፍሎች ለትግራይ ክልላዊ መንግስት	38
ሠንጠረዥ 13ለ: ጠቅላላ ምግብና የምግብ ክፍሎች የሸማቾች ዋጋ መመዘኛ	41

መግቢያ

የሽማፍራዎች ዋጋ መመዘኛ ኢንዱስትሪ ማለት ሽማፍራዎች ለተወሰኑ ዕቃዎችና አገልግሎቶች የከፈሉትን አማካይ የዋጋ ለውጥ ለመለካት የሚያገለግል ጠቋሚ አህዝ ነው። የዋጋ መመዘኛ ኢንዱስትሪ አብዛኛውን ጊዜ መሠረት የሚያደርገው የቤተሰብ ገቢ፣ ፍጆታና ወጪ ጥናት ወጤት በሆነው ቤተሰቦች በዕቃዎችና ግልጋሎቶች ለይ ባወጡት የመቶኛ ድርሻ መጠንና የወቅቱ የገበያ ዋጋ ላይ ነው። በዚህ ሪፖርት ውስጥ የተካተቱት 12 ኢንዱስትሪዎች (የ11 ክልሎችና የአገር አቀፍ) መሠረት ያደረጉት የማዕከላዊ ስታቲስቲክስ ኤጀንሲ በ1996/97 በጀት ዓመት በመላ አገሪቱ በናሙና በተመረጡ ቦታዎች ያካሄደውን የቤተሰብ ገቢ፣ ፍጆታና ወጪ ጥናት ወጤት ነው።

ይህ ታህሳስ ወር 1999 ዓ.ምን መሠረት ያደረገው (ታህሳስ 1999=100) የሽማፍራዎች ዋጋ መመዘኛ ኢንዱስትሪ በክልል ደረጃ ሲዘጋጅ በዓይነቱ ለሁለተኛ ጊዜ የተዘጋጀ ሲሆን በታህሣሥ 1993 ዓ.ም. መሠረት ያደረገውን የሽማፍራዎች መመዘኛ ኢንዱስትሪ የሚተካ ነው። በአገር አቀፍ ደረጃ ከ1988 ጀምሮና በአዲስ አበባ ከተማ ደረጃ ደግሞ ከ1955 ዓ.ም ጀምሮ በየወሩ ተመሳሳይ ኢንዱስትሪዎች እየተዘጋጁ ለተጠቃሚዎች ሲሰራጩ መቆየታቸው ይታወቃል። እነዚህ 12 የዋጋ መመዘኛ ኢንዱስትሪዎች በአገሪቱ የሚገኙ 11 ክልሎችና የአገር አቀፍን ሪፖርት ጨምሮ የሚሸፍነው የዕቃዎችና የአገልግሎቶችን ክምችት በያዙ ሁለት ዋና ክፍሎች የተከፈሉ ናቸው። እነሱም፡- የምግብና ምግብ ነክ ያልሆኑ መመዘኛ ኢንዱስትሪዎች ሲሆን ምግብ ነክ ያልሆኑ መመዘኛ ኢንዱስትሪዎች እንደገና በ10 ንዑስ ክፍሎች ይከፈላል። እነዚህም መጠጥ፣ ሲጃራና ትምባሆ፣ ልብስና መጫሚያ፣ የቤት ኪራይ፣ የቤት መሥሪያ ዕቃዎች፣ ወሃና ኢነርጂ፣ የቤት ዕቃዎች፣ የቤት ማስገጫዎች፣ የቤት ቁሳቁስና የቤት ሠራተኛ ደመወዝ፣ ሕክምና፣ መንገድና መገናኛ፣ መዝናኛና ትምህርት፣ የግል ንጽህናና የግል ቋሚ ዕቃዎች እንዲሁም ሌሎች ዕቃዎችና አገልግሎቶች ሲሆኑ የሁሉም ክፍሎች አጠቃላይ ወጤት የሚሆነው ደግሞ የጠቅላላ ዋጋዎች መመዘኛ ኢንዱስትሪ ነው።

በሁሉም ክልሎች የጠቅላላ ዋጋ መመዘኛ ኢንዱስትሪ ስሌት አብዛኛውን የመቶኛ ወጪ ድርሻ የሚይዘው የምግብ መመዘኛ ኢንዱስትሪ ሲሆን በሁሉም የምግብ ዋጋ መመዘኛ ኢንዱስትሪዎች ዋና ዋና ክፍሎች እህል፣ ጥራጥሬ፣ ዳቦና ሌሎች የተዘጋጁ ምግቦች፣ ሥጋ፣ ወተት፣ ዐይብና ዕንቁላል፣ ዘይትና ቅባቶች፣ አትክልትና ፍራፍሬ፣ ቅመማ ቅመም፣ ድንችና ሌሎች ሥራሥሮች፣ ያልተቆላ ቡናና ሻይ ቅጠል፣ ሌሎች ምግቦች፣ የማስፈጫ አገልግሎትና ከቤት ወጪ የተወሰዱ ምግቦች ናቸው።

ለዋጋ ኢንዱስትሪ የተመረጡት ዕቃዎችና አገልግሎቶች የዋጋ መረጃ የሚሰበሰበው በየዞን/ በየልዩ ወረዳ በናሙና በተመረጡ ወካይ ከተሞች ውስጥ ባሉ የገበያ ቦታዎች ነው። በመሆኑም ከእያንዳንዱ ዞን ሁለት ከተሞች (የገበያ ቦታዎች) የተመረጡ ሲሆን እንደዚሁም በእያንዳንዱ ልዩ ወረዳ አንድ ከተማ (የገበያ ቦታ) በጥናቱ እንዲካተት ተደርጓል።

በእነዚህ ከተሞች ውስጥ ተመድበው ለሚሰሩ መረጃ ሰብሳቢዎች በየበጀት ዓመቱ መጨረሻ በመረጃ አሰባሰብ ዘዴው ላይ ስልጠና የሚሰጥ ሲሆን ለአሰባሰቡ የሚረዱ የመስክ መገልገያ መሣሪያዎች (ሚዛን፣ ሜተር ... ወዘተ) ይሰጣቸዋል። እነዚህ መሣሪያዎችን በመጠቀም በየወሩ የዋጋ መረጃዎችን ከነጋዴዎች ይሰበስባሉ። አንዳንድ ጊዜም አንድ በላተኛ ወይም ገዢ ከነጋዴ ሲገዛ ቢገኝና ለሥራው ተባባሪነቱን ካሳየ መረጃው ከርሱም ይሰበስባል። የችርቻሮ ዋጋ መረጃ የሚሰበሰበው እንደ አውሮፓውያን ዘመን አቆጣጠር ወሩ በገባ ከ1ኛው ቀን አንስቶ አስከ 15ኛው ቀን ነው። የክልል ኢንዱስትሪ ለማስላት ለኢንዱስትሪ ለተመረጡት ዕቃዎችና አገልግሎቶች አማካይ የችርቻሮ ዋጋቸውን የጂኦሜትሪክ ሚን ዘዴ ጥቅም ላይ ወሎአል። የኢንዱስትሪ ሪፖርቱም በየወሩ ለተጠቃሚዎች በዚህ መልክ ይቀርባል።

የአገር አቀፍ የችርቻሮ ዋጋ መመዘኛ ኢንዱስትሪ የሚሰላው እያንዳንዱ ክልል ለአገር አቀፍ የቤተሰብ ወጪ ያለውን የመቶኛ ድርሻ መሠረት በማድረግ ነው። በመሆኑም ለአገር አቀፍ ኢንዱስትሪ ስሌት ከ95 በመቶ በላይ አስተዋጽኦ የሚያደርጉ ክልሎች በቅደም ተከተል ኦሮሚያ፣ አማራ፣ የደቡብ ብሔር ብሔረሰቦችና ሕዝቦች፣ አዲስ አበባና ትግራይ ሲሆኑ የተቀሩት ክልሎች በየወሩ ለሚታዩው አገር አቀፍ የችርቻሮ ዋጋ መመዘኛ ኢንዱስትሪ ስሌት የሚኖራቸው አስተዋጽኦ ከአምስት በመቶ የማይበልጥ ነው።

ለችርቻሮ ዋጋ ጥናት በአጠቃላይ 119 የገበያ ቦታዎች የተመረጡ ሲሆን በእያንዳንዱ ክልል የተመረጡ የናሙና ገበያዎች ብዛትና በየኢንዱስትሪዎቻቸው ማዕቀፍ የተካተቱ ዕቃዎች/አገልግሎቶች ብዛት ከዚህ በታች ቀርቦአል።

ሠንጠረዥ ሀ: በጥናቱ የተሸፈኑ ገበያዎችና በኢንዱስትሪ ማዕቀፍ የተካተቱ ዕቃዎች/አገልግሎቶች ብዛት በክልል

Table A: Number of Markets Covered and Basket of Commodities by Region

ተራ ቁጥር	ክልል	የገበያ ቦታዎች ብዛት	በኢንዱስትሪ የተካተቱ ዕቃዎች/አገልግሎቶች ብዛት		Region
			ታህሳስ 1993=100	ታህሳስ 1999=100	
1	ትግራይ	8	114	143	Tigray
2	አፋር	4	85	153	Afar
3	አማራ	20	118	144	Amhara
4	ኦሮሚያ	24	127	161	Oromia
5	ሶማሌ	6	85	122	Somalie
6	ቤኒሻንጉል	6	111	142	Benishangul-Gumuz
7	ጊ.ብ.ብ.ሀ	31	130	152	SNNP
8	ጋምቤላ	3	105	103	Gambela
9	ሐረሪ	2	102	158	Harari
10	አዲስ አበባ ከተማ	12	175	193	Addis Ababa City Administration
11	ድራዳዋ አስተዳደር ድምር	3	121	150	Dire Dawa Administrative
		119			Total
Sr.No.		Number of Markets	Basket of Commodities		

ለጠቋሚ አሀዙ ክንዋኔ ዋናው ነገር በጠቋሚ አሀዙ ማዕቀፍ ተካትተው በዋናነት የሚያገለግሉ ዕቃዎችና አገልግሎቶች የመምረጥ ጉዳይ ነው። ጠቋሚ አሀዞች የሚመሠረቱት በአጠቃላይ በናሙና በሚመረጡ ዕቃዎች ላይ ሲሆን በጠቋሚ አሀዙ ማዕቀፍ ውስጥ መካተት የሚገባው ዕቃ መወሰን ግን ሁሌም ቀላል የሚባል ተግባር አይደለም። የተለያየ የአመራረጥ ዘዴ መጠቀም ቢቻልም የሚመረጡት ዕቃዎች ለረጅም ጊዜ የሚኖራቸው ተፈላጊነት፣ በአስተማማኝ ሁኔታ በገበያ ላይ የመገኘታቸው ጉዳይ፣ ሌሎችን ዕቃዎች የመወከል ብቃትና ከሌሎች ምርቶች ጋር ያላቸው ተወዳዳሪነት መሠረት ያደረገ እንዲሆን ይፈለጋል። በአጠቃላይ የተመረጡት ዕቃዎች በበቂ መጠን የመገኘታቸው ሁኔታ፣ በየወቅቱ ተወዳዳሪነታቸውና ዕቃዎችና አገልግሎቶች ምድቡን የመወከላቸው ብቃትን ማረጋገጥ ያስፈልጋል።

ታህሳስ 1999 ዓ.ም. መሠረት ያደረገው የሸማቾች ዋጋ መመዘኛ ኢንዱክስ አይነቶችና እያንዳንዱ ዋና ክፍል ያለው የወጪ ድርሻ በገፅ 6 ላይ ይታያል። ይህ ሠንጠረዥ እንደሚያሳየው የምግብ የመቶኛ የወጪ ድርሻ ታህሳስ 1993 ዓ.ም. ከነበረው 60 በመቶ ወደ 57 በመቶ ቀንሷል። በአንፃሩ ደግሞ ምግብ ነክ ያልሆነ መመዘኛ ኢንዱክስ ታህሳስ 1993 ዓ.ም. ከነበረው 40 በመቶ የወጪ ድርሻ ወደ 43 በመቶ ከፍ ብሏል። ባጠቃላይ ሲታይ በሁሉም ክልሎች ኢንዱክስ ላይ የምግብ የወጪ ድርሻ የማይናቅ ቅናሽ ያሳየ ሲሆን ምግብ ነክ ያልሆኑ የወጪ ድርሻ መጠነኛ እድገት አሳይታል።

የሐምሌ ወር 2001 ዓ.ም. የዋጋ ግሽበት ሁኔታ

ከሠንጠረዥ #ሐ; መረዳት እንደሚቻለው በሐምሌ ወር 2001 ዓ.ም. የተመዘገበው አገራዊ አጠቃላይ የዋጋ ግሽበት 29.9 በመቶ ሲሆን ይህ አህዝ በሐምሌ 2000 ከታየው 29.6 በመቶ አጠቃላይ የዋጋ ግሽበት ጋር ሲነፃፀር በ0.3 ከመቶ ጭማሪ አሳይቷል። በተመሳሳይ ሁኔታ በሐምሌ ወር 2001 ዓ.ም. የተመዘገበው አገራዊ የምግብ የዋጋ ግሽበት 34.2 በመቶ ሲሆን አገራዊ የምግብ ነክ ያልሆኑ የዋጋ ግሽበት ደግሞ 22.9 በመቶ ሆኗል። በሐምሌ ወር 2001 ዓ.ም. የተመዘገበው 34.2 በመቶ የምግብ የዋጋ ግሽበት ከሐምሌ 2000 ዓ.ም ከታየው 41.3 ጋር ሲነፃፀር በ7.1 ከመቶ ቅናሽ አሳይቷል። ለዚህም አገራዊ የምግብ የዋጋ ግሽበት መቀነስ ምክንያት የሆኑት የተለያዩ የምግብ ክፍሎች ማለትም በእህል፣ በጥራጥሬ፣ በሥጋ፣ በአይብና ዕንቁላል፣ በአትክልትና ፍራፍሬ፣ በድንችና ሌሎች ሥራሥሮች፣ በሌሎች ምግቦች እና ከቤት ወጪ በተወሰዱ ምግቦች የዋጋ ኢንዱክሶች ላይ ቅናሽ በመከሰቱ ነው።

የ12 ወራት የምግብና የአጠቃላይ ተንቀሳቃሽ አማካይ የዋጋ ግሽበት ከመጋቢት ወር 2001 ዓ.ም ጀምሮ በተከታታይ ቅናሽ በማሳየት ላይ ይገኛል። ይኸውም በየካቲት ወር 2001 ዓ.ም አጠቃላይ ተንቀሳቃሽ የዋጋ ግሽበቱ 46.1 የነበረ ሲሆን በመጋቢት ወር 2001 ዓ.ም 45.2፣ በሚያዝያ ወር 2001 ዓ.ም በ44.3፣ በግንቦት ወር 2001 ዓ.ም በ41.6 በመቶ፣ በሰኔ ወር በ36.4 በመቶ እና በሐምሌ ወር 2001 ዓ.ም በ29.9 በመቶ ዝቅ ብሎአል። በተመሳሳይ ሁኔታ የምግብ ተንቀሳቃሽ አማካይ የዋጋ ግሽበትም በየካቲት ወር 2001 ዓ.ም ከነበረበት 61.1 በመቶ በመጋቢት ወር 2001 ዓ.ም ወደ 59.2 በመቶ፣ በሚያዝያ ወር 2001 ዓ.ም በ57.2 በመቶ፣ በግንቦት ወር 2001 ዓ.ም በ52.6 በመቶ፣ በሰኔ ወር በ44.2 እና በሐምሌ ወር 2001 ዓ.ም በ34.2 በመቶ ዝቅ ማለቱ ተረጋግጧል። የሐምሌ ወር 2001 ዓ.ም የምግብ ነክ ያልሆኑ የዋጋ ግሽበት ከሰኔ 2001 ዓ.ም ጋር ሲነፃፀር በ0.8 በመቶ ዝቅ ብሎአል። ከቅርብ ወራት ጀምሮ ከምግብ ክፍሎች እህል፣ ዳቦና የተዘጋጁ ምግቦች፣ ቅመማ ቅመም፣ ቡናና ሻይ ቅጠል እና ስኳር ዋጋ ጭማሪ በማስመዘገብ ላይ የሚገኙ ሲሆን በተመሳሳይ ሁኔታ የምግብ ነክ ያልሆኑ የኢንዱስትሪ ክፍሎች ውስጥ ነዳጅ፣ የኮንስትራክሽን ዕቃዎች፣ ልብስና መጫሚያ፣ የቤት ዕቃዎችና የቤት ማስገጫዎች እና የግል ንጽህና ዕቃዎች ዋጋ ጨምሮአል። በቅርቡ የታየው የዋጋ ጭማሪ ግን ባለፈው ዓመት ከታየው ጭማሪ ጋር ሲነፃፀር የአሁኑ በጣም መቀነሱን ጠቋሚ አሃዙ ያመለክታል።

ሠንጠረዥ (መ) የሚያሳየው የዋጋ ግሽበት ሁኔታ ካለፈው ዓመት ተመሳሳይ ወር ጋር በማነፃፀር ነው። ከሠንጠረዥ መረዳት እንደሚቻለው የሐምሌ ወር 2001 ዓ.ም አጠቃላይ የዋጋ ግሽበት ካለፈው ዓመት ሐምሌ ወር 2000 ዓ.ም ጋር ሲነፃፀር በ3.7 ከመቶ ዝቅ ብሎአል። ለዚህ ምክንያቱ በሐምሌ ወር 2001 ዓ.ም የተመዘገበው አጠቃላይ የዋጋ መመዘኛ ኢንዱክስ 173.3 ከመቶ በሐምሌ ወር 2000 ከተመዘገበው 179.9 ከመቶ አጠቃላይ የዋጋ መመዘኛ ኢንዱክስ አንሶ በመገኘቱ ነው። ለአጠቃላይ ዋጋ ግሽበቱ መቀነስ ዋናው ምክንያት በምግብ ክፍሎች በተለይም በእህል ዋጋ ላይ ካለፈው ዓመት ሐምሌ ወር ጋር ሲነፃፀር የታየው ቅናሽ ነው። በተመሳሳይ ሁኔታ የምግብ ዋጋ ግሽበትም የሐምሌ ወር 2001 ዓ.ም ካለፈው ዓመት ሐምሌ ወር 2000 ዓ.ም ጋር ሲነፃፀር በ12.7 ከመቶ ቅናሽ አሳይቶአል። ለዚህ ቅናሽ ምክንያቱ በሐምሌ ወር 2001 ዓ.ም የተመዘገበው የምግብ ዋጋ መመዘኛ ኢንዱክስ 189.7 ከመቶ በሐምሌ ወር 2000 ዓ.ም ከተመዘገበው 216.6 ከመቶ የምግብ ዋጋ መመዘኛ ኢንዱክስ አንሶ በመገኘቱ ነው። ሆኖም የምግብ ነክ ያልሆኑ የኢንዱስትሪ ክፍሎች የዋጋ ግሽበት የሐምሌ ወር 2001 ዓ.ም ካለፈው ዓመት ሐምሌ ወር 2000 ዓ.ም ጋር ሲነፃፀር የ15.4 በመቶ ጭማሪ አሳይቷል።

July 2009 Inflation Rate

As it is indicated in Table 'C' below the country level overall inflation rate (annual change based on 12 months Moving Average) stood at 29.9 percent in July 2009. This rate is 0.3 percentage points higher than the corresponding annual average rate of 29.6 percent at July 2008. Similarly, the country level food inflation rate stood at 34.2 percent and the country level Non-food inflation rate stood at 22.9 percent in July 2009. The 34.2 percent Country level food inflation rate in July 2009 is 7.1 percentage points lower than that of 41.3 percent inflation rate at July 2008. This decrease in the Food inflation rate was due to the decline in price indices of the Food components like Cereals, Pulses, Meat, Milk and egg, Vegetable and fruits, Potatoes & Other Tubers and Stems, Other food Items and food taken away from home.

The 12 months moving average General and Food inflation showed a decline starting in March 2009 and continued the trend in July 2009. In this regard the General moving average inflation rate was 46.1 in February 2009 and consequently declined to 45.2 percent in March 2009, 44.3 in April 2009, 41.6 in May 2009, 36.4 in June 2009 and 29.9 in July 2009. In a similar way the Food moving average inflation rate was declined from 61.1 percent in February 2009 to 59.2 percent in March 2009, 57.2 percent in April 2009, 52.6 percent in May 2009, 44.2 in June 2009 and 34.2 in July 2009. The Inflation rate of Non-food components has increased by 0.3 percent as compared to the one observed June 2009. In the recent few months, among the food components, the prices of Cereals, Bread and other prepared foods, Spices, coffee and Tea leaves and Sugar are on the rise. Among the non-food components, the prices of Fuel, Construction materials, clothing and footwear, Furniture and furnishing and Personal care and effects are increasing. However, as the numerical figures indicate the increase in prices in recent months are much lower than the situation observed last year.

Table (D) shows Inflation rate based on last year's similar month comparison. As can be seen from the table the July 2009 General year-on-year inflation has declined by 3.7 percent as compared to the one observed in July 2008. The 3.7 percent decline in General inflation rate is due to the fact that the General Consumer price Index (CPI) of 173.3 percent observed in July 2009 was less than the corresponding 179.9 percent General Consumer Price Index (CPI) observed in July 2008. The main reason for the decline in General Consumer Price Index in July 2009 is the fall in the prices of food components specially, cereals, as compared to the one observed in July 2008. Similarly, the year-on-year Food inflation declined by 12.4 percent in July 2009 as compared to the one observed in July 2008. The reason for the decline in the food Inflation rate was that the 189.7 percent Food Consumer price Index (CPI) observed in July 2009 was less than the corresponding 216.6 percent Food Consumer Price Index (CPI) observed in July 2008. However, the Non-Food inflation increased by 15.4 points in July 2009 as compared to the one observed in July 2008.

ሠንጠረዥ ሐ: በአገር አቀፍ ደረጃ የዋጋ ግሽበት ሁኔታ

Table C: The Country Level General Inflation Rate

በጀት ዓመት (ወር)	የዋጋ ግሽበት ሁኔታ			Budget Year and months
	አጠቃላይ የዋጋ ግሽበት	የምግብ የዋጋ ግሽበት	የምግብ ያልሆኑ የዋጋ ግሽበት	
የ2000 በጀት ዓመት በወራት				The 2007/8 Budget Year in Months
ዓመታዊ አማካይ (ሐምሌ 1999 - ሰኔ 2000)	18.4	23.6	11.6	Annual Average (July 2007 – June 2008)
ዓመታዊ አማካይ (ሐምሌ 2000 - ሰኔ 2001)	40.6	54.1	21.0	Annual Average (July 2008 – June 2009)
ሰኔ 2000	25.3	34.9	12.5	June 2008
ሐምሌ 2000	29.6	41.3	13.8	July 2008
ነሐሴ 2000	33.6	46.9	15.4	August 2008
መስከረም 2001	37.2	51.8	17.0	September 2008
ጥቅምት 2001	40.3	55.7	18.8	October 2008
ኅዳር 2001	42.8	58.7	20.4	November 2008
ታህሳስ 2001	44.4	60.0	21.9	December 2008
ጥር 2001	45.6	60.9	23.4	January 2009
የካቲት 2001	46.1	61.1	24.2	February 2009
መጋቢት 2001	45.2	59.2	24.4	March 2009
ሚያዝያ 2001	44.3	57.2	24.6	April 2009
ግንቦት 2001	41.6	52.6	24.6	May 2009
ሰኔ 2001	36.4	44.2	23.7	June 2009
ሐምሌ 2001	29.9	34.2	22.9	July 2009
Budget Year	Inflation Rate			
	Overall Inflation rate	Food Inflation rate	Non-food Inflation rate	

Revised (From January 2007 – November 2007)

ሠንጠረዥ መ: የዘንድሮውና የአምናው ተመሳሳይ ወሮች የሽማግሌት ዋጋ መመዘኛ ኢንዱስትሪ ለውጥ ንፅፅር በአገር አቀፍ ደረጃ ማጠቃለያ

Table D: Summary of Comparison of CPI Movements, Current vs. Last year's Similar Months at Country Level

በጀት ዓመት (ወር)	የዋጋ ግሽበት ሁኔታ ካለፈው ዓመት ተመሳሳይ ወር ጋር ሲነፃፀር			Budget Year and months
	አጠቃላይ የዋጋ ግሽበት	የምግብ የዋጋ ግሽበት	የምግብ ነክ ያልሆኑ የዋጋ ግሽበት	
የ2000 በጀት ዓመት በወራት				The 2007/8 Budget Year in Months
ዓመታዊ አማካይ (ሐምሌ 1999 - ሰኔ 2000)	24.9	34.2	12.3	Annual Average (July 2007 - June 2008)
ዓመታዊ አማካይ (ሐምሌ 2000 - ሰኔ 2001)	38.7	48.6	24.1	Annual Average (July 2008 - June 2009)
ሰኔ 2000	55.2	78.3	23.2	June 2008
ሐምሌ 2000	64.2	91.7	24.9	July 2008
ነሐሴ 2000	61.7	85.0	27.1	August 2008
መስከረም 2001	59.6	80.9	27.3	September 2008
ጥቅምት 2001	55.4	72.3	29.5	October 2008
ኅዳር 2001	49.4	63.3	28.2	November 2008
ታህሳስ 2001	39.3	46.7	27.9	December 2008
ጥር 2001	37.8	44.8	27.0	January 2009
የካቲት 2001	32.8	38.9	23.5	February 2009
መጋቢት 2001	23.7	26.5	19.2	March 2009
ሚያዝያ 2001	23.4	25.4	20.3	April 2009
ግንቦት 2001	14.2	11.6	18.7	May 2009
ሰኔ 2001	2.7	-3.4	15.0	June 2009
ሐምሌ 2001	-3.7	-12.4	15.4	July 2009
Budget Year	Inflation Rate based on last year's similar month comparison			
	Overall Inflation rate	Food Inflation rate	Non-food Inflation rate	

Revised (From January 2007 – November 2007)

የዘንድሮውና የአምናው ተመሳሳይ ወሮች የችርቻሮ ዋጋ መመዘኛ ጠቋሚ አሀዝ ንፅፅር በአገር አቀፍ ደረጃ

Comparison of CPI Movements, Current vs Last year's Similar Months at Country Level

ከሠንጠረዥ 1(ሀ) መረዳት እንደሚቻለው የሐምሌ ወር 2001 ዓ.ም የአገር አቀፍ ጠቅላላ የችርቻሮ ዋጋ ኢንዱክስ ከሐምሌ ወር 2000 ዓ.ም ጠቅላላ ኢንዱክስ ጋር ሲነፃፀር በ3.7 ከመቶ ቅናሽ አሳይቶአል። ለዚህ መቀነስ ምክንያት የሆነው በምግብ ኢንዱክስ ላይ የታየው የ12.4 ከመቶ ቅናሽ ነው። በሌላ በኩል መጠጥ በ9.5 ከመቶ፣ ሲጋራና ትምባዮ 27.0 ከመቶ፣ ልሰና መጫሚያ በ28.6 ከመቶ፣ የቤት ኪራይ፣ የቤት መሥሪያ ዕቃዎች፣ ወሃና ኢነርጂ በ11.0 ከመቶ፣ የቤት ዕቃዎች፣ ቤት ማሰጠያዎች፣ የቤት ቁሳቁስና የቤት ሠራተኛ ደመወዝ በ17.7 ከመቶ፣ ህክምና 15.9 ከመቶ፣ ትራንስፖርትና መገናኛ በ8.6 ከመቶ፣ መዝናኛና ትምህርት በ18.4 ከመቶ፣ የግል ንጽህናና የግል ቋሚ ዕቃዎች በ24.1 ከመቶ እና ሌሎች ዕቃዎች በ7.9 ከመቶ በየኢንዱስትሪው ላይ ጭማሪ በማሳየታቸው ነው።

ሠንጠረዥ 1(ለ) እንደሚያሳየው ለጠቅላላ ምግብ ኢንዱክስ 12.4 ከመቶ መቀነስ ምክንያት የሆኑት የምግብ ክፍሎች ማለትም እህል በ23.4 ከመቶ፣ ጥራጥራ በ2.1 ከመቶ፣ ዘይትና ቅባቶች በ11.3 ከመቶ እና ቅመማ ቅመም በ57.7 ከመቶ በኢንዱስትሪው ላይ ቅናሽ በማሳየታቸው ነው። በሌላ በኩል ዳቦና ሌሎች የተዘጋጁ ምግቦች በ9.4 ከመቶ፣ ሥጋ በ7.5 ከመቶ፣ ወተት፣ አይብና ዕንቁላል በ20.2 ከመቶ፣ አትክልትና ፍራፍሬ በ24.1 ከመቶ፣ ድንችና ሌሎች ስራ ስሮች በ3.7 ከመቶ፣ ያልተቆሳ ቡናና ሻይ ቅጠል በ11.6 ከመቶ፣ ሌሎች ምግቦች በ36.4 ከመቶ፣ የማሰጠያ አገልግሎት በ12.6 ከመቶ እና ከቤት ወጪ የተወሰዱ ምግቦች በ15.9 ከመቶ ዕድገት በየኢንዱስትሪው ላይ አሳይተዋል።

ሠንጠረዥ (መ) የሚያሳየው የዋጋ ግሽበት ሁኔታ ካለፈው ዓመት ተመሳሳይ ወር ጋር በማነፃፀር ነው። ከሠንጠረዥ መረዳት እንደሚቻለው የሐምሌ ወር 2001 ዓ.ም አጠቃላይ የዋጋ ግሽበት ካለፈው ዓመት ሐምሌ ወር 2000 ዓ.ም ጋር ሲነጻጸር በ3.7 ከመቶ ዝቅ ብሎአል። ለዚህ ምክንያቱ በሐምሌ ወር 2001 ዓ.ም የተመዘገበው አጠቃላይ የዋጋ መመዘኛ ኢንዱክስ 173.3 ከመቶ በሐምሌ ወር 2000 ከተመዘገበው 179.9 ከመቶ አጠቃላይ የዋጋ መመዘኛ ኢንዱክስ አንሶ በመገኘቱ ነው። ለአጠቃላይ ዋጋ ግሽበቱ መቀነስ የሆነው ምክንያት በምግብ ክፍሎች በተለይም እህል ዋጋ ላይ ካለፈው ዓመት ሐምሌ ወር ጋር ሲነጻጸር የታየው ቅናሽ ነው። በተመሳሳይ ሁኔታ የምግብ ዋጋ ግሽበትም የሐምሌ ወር 2001 ዓ.ም ካለፈው ዓመት ሐምሌ ወር 2000 ዓ.ም ጋር ሲነጻጸር በ12.7 ከመቶ ቅናሽ አሳይቶአል። ለዚህ ቅናሽ ምክንያቱ በሐምሌ ወር 2001 ዓ.ም የተመዘገበው የምግብ ዋጋ መመዘኛ ኢንዱክስ 189.7 ከመቶ በሐምሌ ወር 2000 ዓ.ም ከተመዘገበው 216.6 ከመቶ የምግብ ዋጋ መመዘኛ ኢንዱክስ አንሶ በመገኘቱ ነው። ሆኖም ምግብ ነክ ያልሆኑ የኢንዱስትሪ ክፍሎች የዋጋ ግሽበት የሐምሌ ወር 2001 ዓ.ም ካለፈው ዓመት ሐምሌ ወር 2000 ዓ.ም ጋር ሲነጻጸር የ15.4 ከመቶ ጭማሪ አሳይቷል።

The July 2009 Country Level Consumer Price Index has decreased by 3.7 percent as compared to July 2008 (Table 1(a)). This decline in the General Consumer Price Index is attributed to the decline in the food index by 12.4 percent. On the other hand, a rise was observed in the indices of Beverages by 9.5 percent, Cigarettes and Tobacco by 27.0 percent, Clothing and Footwear by 28.6 percent, House Rent, Construction Materials, Water and Fuel and Power by 11.0 percent, Furniture, Furnishings, Household Equipment and Operation by 17.7 percent, Medical Care and Health by 15.9 percent, Transport and Communication by 8.6 percent, Recreation, Entertainment and Education by 18.4 percent, Personal Care Effects by 24.1 percent and Miscellaneous Goods by 7.9 percent.

The 12.4 percent decline in the Food index was observed due to the fall in the indices of the components of Food index (Table 1(b)) namely: Cereals by (23.4 percent), Pulses (2.1 percent), oils and Fats (11.3 percent) and Spices by (57.7 percent). On the other hand, rises were observed in the indices of Bread and Other Prepared Food (9.4 percent), Meat (7.5 percent), Milk, Cheese and Eggs (20.2 percent), Vegetables and fruits (24.1 percent), Potatoes, Other Tubers and Stems (3.7 percent), Coffee and Tea Leaves (11.6 percent), other Food Items (36.4 percent), Milling Charge by (12.6 percent), and Food Taken Away from Home (15.9 percent) respectively.

Table (D) shows Inflation rate based on last year's similar month comparison. As can be seen from the table the July 2009 General year-on-year inflation has declined by 3.7 percent as compared to the one observed in July 2000. The 3.7 percent decline in General inflation rate is due to the fact that the General Consumer price Index (CPI) of 173.3 percent observed in July 2009 was less than the corresponding 179.9 percent General Consumer Price Index (CPI) observed in July 2008. The main reason for the decline in General Consumer Price Index in July 2009 is the fall in the prices of food components specially, cereals, as compared to the one observed in July 2008. Similarly, the year-on-year Food inflation declined by 12.4 percent in July 2009 as compared to the one observed in July 2008. The reason for the decline in the food Inflation rate was that the 189.7 percent Food Consumer price Index (CPI) observed in July 2009 was less than the corresponding 216.6 percent Food Consumer Price Index (CPI) observed in July 2008. However, the Non-Food inflation increased by 15.4 points in July 2009 as compared to the one observed in July 2008.

**የዘንድሮውና የአምናው ተመሳሳይ ወሮች
የችርቻሮ ዋጋ መመዘኛ ጠቋሚ አሀዝ ንፅፅር በአገር አቀፍና በክልሎች ደረጃ**
Comparison of CPI Movements, Current vs Last year at Country and
Regional Levels

ከሠንጠረዥ 2(ሀ) መረዳት እንደሚቻለው የሐምሌ ወር 2001 ዓ.ም የአገር አቀፍ ጠቅላላ የችርቻሮ ዋጋ መመዘኛ ኢንዱስትሪ ከሐምሌ ወር 2000 ዓ.ም ጠቅላላ ኢንዱስትሪ ጋር ሲነፃፀር በ3.7 ከመቶ ቅናሽ አሳይቶአል። ለዚህ ቅናሽ አስተዋጽኦ ያደረጉት አፋር 0.5 ከመቶ፣ አማራ 6.1 ከመቶ፣ ቤኔሻንጉል ጉሙዝ 0.4 ከመቶ፣ ኦሮሚያ 5.0 ከመቶ፣ ደቡብ ብሄሮች ብሄረሰቦችና ሕዝቦች 5.2 ከመቶ እና ትግራይ 4.0 ከመቶ በጠቅላላ ኢንዱስትሪቸው ላይ ቅናሽ በማሳየታቸው ነው። በሌላ በኩል አዲስ አበባ 5.4 ከመቶ፣ ድራዳዋ 6.8 ከመቶ፣ ሐረሪ 8.3 ከመቶ እና ሶማሌ 6.6 ከመቶ በኢንዱስትሪቸው ላይ ጭማሪ አሳይተዋል። ሆኖም በጋምቤላ ኢንዱስትሪ ላይ ምንም ለውጥ አልታየም።

Table 2(a) also displays that the July 2009 Country level General Consumer Price Index has decreased by 3.7 percent as compared to July 2008. This decrease was attributed to the decline in the indices of its constituent regions; namely: Afar 0.5 percent, Amhara 6.1 percent, Benishangul Gumuz 0.4 percent, Oromia 5.0 percent, SNNP by 5.2 percent and Tigray 4.0 percent. On the other hand, an increase was observed in the indices of Addis Ababa 5.4 percent, Dire Dawa 6.8 percent, Harari 8.3 percent and Somali 6.6 percent. However, no change was observed in the Gambela Consumer Price Index.

ሠንጠረዥ 2(ለ) እንደሚያሳየው አገር አቀፍ ጠቅላላ የምግብ ዋጋ መመዘኛ ኢንዱስትሪ 12.4 ከመቶ መቀነስ ምክንያት የሆኑት አዲስ አበባ በ2.0 ከመቶ፣ አፋር 5.2 ከመቶ፣ አማራ በ13.4 ከመቶ፣ ቤኔሻንጉል ጉሙዝ በ8.6 ከመቶ፣ ጋምቤላ በ7.5 ከመቶ፣ ኦሮሚያ 13.9 ከመቶ፣ ደቡብ ብሄሮች፣ ብሄረሰቦችና ሕዝቦች 15.0 ከመቶ እና ትግራይ 13.9 ከመቶ በኢንዱስትሪቸው ላይ ቅናሽ በማሳየታቸው ነው። በሌላ በኩል ድራዳዋ በ2.9 ከመቶ፣ ሐረሪ በ4.7 ከመቶ እና ሶማሌ በ2.0 ከመቶ በኢንዱስትሪቸው ላይ ጭማሪ አሳይተዋል።

Table 2(b) reveals that the 12.4 percent decrease in the country level Food index was observed due to the fall in the indices of the regions namely: Addis Ababa 2.0 percent, Afar 5.2 percent, Amhara 13.4, Benishangul Gumuz 8.6 percent, Gambela 7.5 percent, Oromia 13.9 percent, SNNP 15.0 percent and Tigray 13.9 percent. On the other hand, an increase was observed in the indices of Dire Dawa 2.9 percent, Harari 4.7 percent and Somali 2.0 percent respectively.

ወንጠራዎች 1ሀ- ጠቅላላ የ ሽግግሮች ዋጋ መመዘኛ ኢንዱስትሪ ቦሌና የተሳተፉ ክፍሎች በአገር አቀፍ ደረጃ
 ታህሳስ 1999 = 100

Table 1a: General Consumer Price Index and Its Components at Country Level
 December 2006 = 100

ወርና ዓመት	ጠቅላላ ኢንዱስትሪ General Index	ጠቅላላ የምግብ ኢንዱስትሪ Food Total	ጠቅላላ የምግብ ካልሆኑት ኢንዱስትሪ Non-Food Total	የምግብ ካልሆኑት የኢንዱስትሪ ክፍሎች Non-food Consumer Price Index Components											ወር Month and Year	
				መጠጥ Beverages	ቢዳራና ትምብሆ Cigarettes and Tobacco	ልብና መጫጫ Clothing and Footwear	የቤት ኪራይ የቤት መሥሪያ ስቃዎች+ውሃ ነጻጅናሃይል House Rent, Construction Materials, Water, and Fuel and Power	የቤት ስቃዎች የቤት ግዝጊያዎች የቤት ሠራተኛ ደመወዝ Furniture, Furnishings, Household Equipment and Operation	ሕክምና Medical Care and Health	ትራንስፖርትና መገናኛ Transport and Communication	መዝናኛና ትምህርት Recreation, Entertainment and Education	የግል ንጽባናና ስቃዎች Personal Care and Effects	ሌሎች ስቃዎች Miscellaneous Goods			
ታህሳስ 1999	100.0	100.0	100.0	100.0	100.0	100.0	100.0	100.0	100.0	100.0	100.0	100.0	100.0	100.0	100.0	December 2006
ኦገስት 1999 - ሰኔ 2000	126.9	137.2	113.3	113.5	107.8	117.0	112.0	125.5	111.9	105.3	106.9	112.6	104.7	104.7	104.7	July 2007 - June 2008
ኦገስት 2000 - ሰኔ 2001	173.1	198.0	140.1	175.8	141.2	149.8	136.6	159.8	128.2	112.8	124.9	142.2	115.5	115.5	115.5	July 2008 - June 2009
2001																2008/2009
ኦገስት 2000	179.9	216.6	131.2	166.9	125.5	131.6	130.5	148.4	120.8	112.1	115.4	131.3	111.8	111.8	111.8	July 2008
ነሐሴ 2000	182.3	218.5	134.3	171.6	131.2	135.9	133.5	151.4	122.6	112.1	118.3	134.3	113.3	113.3	113.3	August "
መስከረም 2001	184.1	220.6	135.5	173.8	131.4	138.8	133.8	153.2	124.0	112.2	120.1	134.8	116.1	116.1	116.1	September "
ጥቅምት 2001	182.0	214.3	139.2	176.3	132.6	141.7	138.2	155.6	125.7	124.2	121.4	134.5	115.0	115.0	115.0	October "
ገዳር 2001	175.1	202.2	139.2	175.2	133.5	146.6	136.1	157.2	125.8	120.0	123.6	138.0	115.0	115.0	115.0	November "
ታህሳስ 2001	165.0	184.3	139.4	174.3	136.0	148.6	136.7	157.5	124.8	113.6	124.0	137.2	113.6	113.6	113.6	December "
ጥር 2001	165.6	185.3	139.5	177.0	139.7	150.4	136.3	158.1	126.3	109.0	124.8	138.6	113.4	113.4	113.4	January 2009
የካቲት 2001	167.1	186.1	141.8	178.1	148.1	156.4	137.0	163.5	128.1	107.5	126.4	144.4	114.3	114.3	114.3	February "
መጋቢት 2001	167.2	185.9	142.5	177.4	151.9	158.4	136.5	165.1	131.8	107.7	128.7	148.4	116.3	116.3	116.3	March "
ግድሃት 2001	169.2	187.8	144.6	178.7	153.1	160.8	139.0	167.7	132.3	108.3	131.0	152.3	116.9	116.9	116.9	April "
ግንቦት 2001	168.8	185.6	146.4	178.9	154.9	162.8	140.6	169.3	136.1	111.3	131.7	153.2	119.6	119.6	119.6	May "
ሰኔ 2001	171.2	188.6	148.0	181.3	157.1	165.7	141.2	170.3	139.8	115.5	133.2	158.8	120.8	120.8	120.8	June "
2002																2009/2010
ኦገስት 2001	173.3	189.7	151.5	182.8	159.4	169.3	144.8	174.6	140.0	121.7	136.7	163.0	120.7	120.7	120.7	July 2009

ሠንጠረዥ 2ሀ፡- ጠቅላላ የ ሽግግሮች ዋጋ መመዘኛ ኢንዱስትሪ ማጠቃለያ በአገር አቀፍ እና በክልሎች ደረጃ
 ታህሳስ 1999 = 100

Table 2a: Summary of General Consumer Price Indices at Country and Regional Levels
 December 2006=100

ወርና ዓመት	Reporting Level												Month and Year
	Eth.	A.A.	Afar	Amhara	B.Gumuz	D.Dawa	Gambela	Harari	Oromia	SNNP	Somalia	Tigray	
ታህሳስ 1999	100.0	100.0	100.0	100.0	100.0	100.0	100.0	100.0	100.0	100.0	100.0	100.0	December 2006
ሐምሌ 1999 - በኔ 2000	126.9	121.8	124.3	127.8	137.7	125.6	123.7	119.1	129.0	125.6	118.5	130.1	July 2007 - June 2008
ሐምሌ 2000 - በኔ 2001	173.1	157.6	158.3	172.1	193.9	167.6	193.2	169.5	179.5	173.9	170.8	183.0	July 2008 - June 2009
2001													2008/2009
ሐምሌ 2000	179.9	155.4	162.3	180.5	201.4	160.4	197.8	163.7	188.3	184.1	167.8	187.5	July 2008
ኔሐሴ 2000	182.3	156.6	164.4	182.5	212.9	167.9	217.2	170.1	190.4	185.3	174.6	192.7	August "
መስከረም 2001	184.1	157.9	165.1	185.1	218.6	168.4	218.0	171.6	190.9	187.5	178.2	199.3	September "
ጥቅምት 2001	182.0	160.8	164.6	185.1	204.7	169.8	219.7	173.6	187.9	181.1	175.1	198.5	October "
ኅዳር 2001	175.1	159.7	159.2	179.9	200.6	167.4	194.6	169.4	179.8	172.3	170.1	187.8	November "
ታህሳስ 2001	165.0	155.0	152.1	166.5	186.9	166.5	180.9	166.1	168.2	164.9	154.8	177.8	December "
ጥር 2001	165.6	153.2	152.3	164.6	178.9	164.9	176.3	165.4	171.7	164.9	164.3	174.3	January 2009
የካቲት 2001	167.1	155.0	153.8	164.8	181.3	167.8	178.5	169.5	173.6	166.2	169.9	174.8	February "
መጋቢት 2001	167.2	156.6	154.1	163.5	184.3	168.4	177.2	169.5	173.8	166.5	169.3	176.9	March "
ሚያዝያ 2001	169.2	159.0	156.7	165.0	184.5	169.5	180.5	170.1	175.5	170.3	171.9	178.0	April "
ግንቦት 2001	168.8	160.6	156.8	163.4	184.4	169.7	186.2	170.6	174.9	171.1	173.5	173.1	May "
በኔ 2001	171.2	160.9	158.7	164.5	188.3	170.5	191.6	174.7	178.8	172.6	179.5	175.8	June "
2002													2009/2010
ሐምሌ 2001	173.3	163.7	161.5	169.6	200.5	171.3	197.8	177.3	178.8	174.6	178.9	179.9	July 2009

ሠንጠረዥ 3 ሀ፡- ጠቅላላ የሽግግር ዋጋ መመዘኛ ሊንደክስ ቢሮ የተካተቱ ክፍሎች ለአዲስ አበባ ከተማ መስተዳድር
 ታህሳስ 1999 = 100

Table 3a: General Consumer Price Index and Its Components for Addis Ababa City Administration
 December 2006 = 100

ወርና ዓመት	ጠቅላላ ሊንደክስ General Index	ጠቅላላ የምግብ ሊንደክስ Food Total	ጠቅላላ የምግብ ክፍል ሊንደክስ Non-Food Total	Non-food Consumer Price Index Components											Month and Year	
				የምግብ ክፍል ሊንደክስ ክፍሎች Beverages	ቪዲዮና ትምባሆ Cigarettes and Tobacco	ልብና መጫጫ Clothing and Footwear	የቤት ኪራይ፣ የቤት መሥሪያ ስቃዎች+ውሃ፣ ነጻጅናሃይል House Rent, Construction Materials, Water, and Fuel and Power	የቤት ስቃዎች የቤት ግንቢያዎች የቤት ተሳታፊዎች የቤት ሠራተኛ ደመወዝ Furniture, Furnishings, Household Equipment and Operation	ሕክምና Medical Care and Health	ትራንስፖርትና መገናኛ Transport and Communication	መዝናኛና ትምህርት Recreation, Entertainment and Education	የግል ንጽባናና የግል ጽግ ስቃዎች Personal Care and Effects	ሌሎች ስቃዎች Miscellaneous Goods			
ታህሳስ 1999	100.0	100.0	100.0	100.0	100.0	100.0	100.0	100.0	100.0	100.0	100.0	100.0	100.0	100.0	100.0	December 2006
ኦገስት 1999 - ሰኔ 2000	121.8	134.8	112.8	127.4	108.7	127.9	106.2	132.3	124.3	102.3	104.4	118.6	104.7	104.7	104.7	July 2007 - June 2008
ኦገስት 2000 - ሰኔ 2001	157.6	190.7	134.5	177.8	156.8	164.4	120.6	165.7	146.0	114.9	121.7	146.6	124.8	124.8	124.8	July 2008 - June 2009
2001																2008/2009
ኦገስት 2000	155.4	195.2	127.7	174.1	127.9	148.3	119.7	155.6	145.6	108.3	108.5	139.5	117.0	117.0	117.0	July 2008
ኔሎን 2000	156.6	197.5	128.2	174.4	129.7	151.3	118.7	157.7	141.4	108.4	109.3	139.5	121.7	121.7	121.7	August "
መስከረም 2001	157.9	198.8	129.4	178.1	129.2	155.6	118.6	160.0	141.0	108.4	112.7	140.0	121.6	121.6	121.6	September "
ጥቅምት 2001	160.8	196.8	135.8	177.4	129.0	158.1	126.6	161.7	145.8	123.9	114.8	140.9	121.5	121.5	121.5	October "
ገዳር 2001	159.7	194.8	135.3	177.7	144.3	160.0	121.8	165.9	145.8	122.3	119.7	144.0	121.6	121.6	121.6	November "
ታህሳስ 2001	155.0	184.8	134.4	174.7	163.6	162.9	121.1	163.5	145.2	116.4	124.2	142.0	121.8	121.8	121.8	December "
ጥር 2001	153.2	181.9	133.3	174.3	172.0	164.5	118.5	164.7	145.9	113.0	123.9	143.0	123.1	123.1	123.1	January 2009
ፕሪብሪ 2001	155.0	183.4	135.2	178.3	179.0	169.8	119.1	168.5	144.1	113.0	127.0	148.1	123.1	123.1	123.1	February "
መጋቢት 2001	156.6	186.0	136.2	179.4	183.1	172.5	119.2	170.5	145.9	113.0	128.8	152.1	121.3	121.3	121.3	March "
ግድሳኝ 2001	159.0	189.4	137.9	181.5	180.2	178.1	119.6	172.2	146.1	112.9	130.1	155.0	132.1	132.1	132.1	April "
ግንቦት 2001	160.6	191.0	139.5	180.9	170.3	176.7	121.2	174.2	148.6	117.4	131.3	156.2	134.4	134.4	134.4	May "
ሰኔ 2001	160.9	189.3	141.1	182.6	173.5	175.0	123.0	173.6	156.2	122.0	130.6	158.8	139.1	139.1	139.1	June "
2002																2009/2010
ኦገስት 2001	163.7	191.4	144.6	187.6	173.2	178.8	125.3	174.0	156.2	132.3	130.9	158.3	142.1	142.1	142.1	July 2009

ወንጠርኛ ላሁ- ጠቅላላ የ ሽግግር ዋጋ መመዘኛ ኢንዱስትሪ ቢሥሩ የተካተቱ ክፍሎች ለሌላ ገለጻ መገንጠት
 ታህሳስ 1999 = 100

Table 4a: General Consumer Price Index and Its Components for the Afar Regional State
 December 2006 = 100

ወርና ዓመት	ጠቅላላ ኢንዱስትሪ General Index	ጠቅላላ የምግብ ኢንዱስትሪ Food Total	ጠቅላላ የምግብ ከፍተኛ ኢንዱስትሪ Non-Food Total	Non-food Consumer Price Index Components											Month and Year	
				መጠጥ Beverages	ሲጃራና ትታባህ Cigarettes and Tobacco	ላብስና መጫዊያ Clothing and Footwear	የቤት ኪራይ የቤት መሥሪያ ስታምፕናውሃግ ነጻጅናሃይል House Rent, Construction Materials, Water, and Fuel and Power	የቤት ስታምፕ የቤት ግዝጊታዎች የቤት ቁጣቁስና የቤት ሠራተኛ ደመወዝ Furniture, Furnishings, Household Equipment and Operation	ሕክምና Medical Care and Health	ትራንስፖርትና መገናኛ Transport and Communication	መዝናኛና ትምህርት Recreation, Entertainment and Education	የግል ንጽባናና የግል ቋጫ ስታምፕ Personal Care and Effects	ሌሎች ስታምፕ Miscellaneous Goods			
ታህሳስ 1999	100.0	100.0	100.0	100.0	100.0	100.0	100.0	100.0	100.0	100.0	100.0	100.0	100.0	100.0	100.0	December 2006
ሐምሌ 1999 - ሰኔ 2000	124.3	136.1	110.2	109.2	102.5	114.5	107.3	113.8	100.6	124.4	92.2	107.2	101.5	101.5	101.5	July 2007 - June 2008
ሐምሌ 2000 - ሰኔ 2001	158.3	189.5	121.3	136.1	131.5	130.8	110.0	143.4	109.7	112.6	107.8	122.5	106.9	106.9	106.9	July 2008 - June 2009
2001																2008/2009
ሐምሌ 2000	162.3	198.7	119.1	132.3	118.0	123.6	112.3	135.6	89.2	130.8	95.3	118.6	104.4	104.4	104.4	July 2008
ኔሐሴ 2000	164.4	200.6	121.4	132.3	123.4	132.6	111.6	137.0	93.0	130.8	97.9	118.0	104.3	104.3	104.3	August "
መስከረም 2001	165.1	201.0	122.4	134.5	131.3	131.3	112.4	138.9	115.4	130.8	102.2	120.6	105.3	105.3	105.3	September "
ጥቅምት 2001	164.6	200.0	122.4	129.7	132.5	129.4	112.9	139.3	116.3	133.1	104.4	121.1	106.6	106.6	106.6	October "
ገብር 2001	159.2	192.5	119.6	129.7	132.8	128.6	108.6	139.8	112.5	117.7	101.9	119.7	106.7	106.7	106.7	November "
ታህሳስ 2001	152.1	180.2	118.7	129.7	132.8	126.8	108.5	141.0	107.2	106.0	107.6	119.6	106.7	106.7	106.7	December "
ጥር 2001	152.3	180.1	119.4	129.7	136.8	131.6	107.8	141.0	106.8	97.7	109.7	122.3	106.7	106.7	106.7	January 2009
የካቲት 2001	153.8	182.1	120.1	134.0	136.8	133.6	107.7	141.2	106.8	97.7	115.0	123.1	107.4	107.4	107.4	February "
መጋቢት 2001	154.1	181.5	121.5	137.9	133.9	134.0	108.0	146.6	115.5	97.7	116.1	125.4	108.6	108.6	108.6	March "
ሚያዝያ 2001	156.7	185.0	123.1	142.3	132.6	133.6	109.9	152.5	112.7	97.7	115.4	127.7	109.0	109.0	109.0	April "
ግንቦት 2001	156.8	185.3	122.9	149.6	132.6	133.7	107.5	154.4	114.2	103.4	115.5	125.4	109.6	109.6	109.6	May "
ሰኔ 2001	158.7	187.2	124.9	151.5	133.9	130.8	113.1	153.7	126.5	107.8	112.5	128.0	108.1	108.1	108.1	June "
2002																2009/2010
ሐምሌ 2001	161.5	188.4	129.5	159.3	133.9	139.0	118.5	151.9	126.9	114.7	113.1	130.4	109.7	109.7	109.7	July 2009

ሠንጠረዥ 5ሀ- ጠቅላላ የ ሽግግር ዋጋ መጠኑን ለጊዜያዊ ቦሌዩ የተከተሉ ክፍሎች ለለግራ ክልላዊ መንግሥት ታህሳስ 1999 = 100

Table 5a: General Consumer Price Index and Its Components for the Amhara Regional State
December 2006 = 100

ወርና ዓመት	ጠቅላላ ለጊዜያዊ	ጠቅላላ የምግብ ለጊዜያዊ	ጠቅላላ የምግብ ክፍል ለጊዜያዊ	Non-food Consumer Price Index Components											Month and Year
				መጠን	ሲጃራትና ትታባህ	ላብስና መጫዊያ	የቤት ኪራይ የቤት መሥሪያ ስታዎችናውሃ ነጻጅናሃይል	የቤት ስታዎች የቤት ጭብጫዎች የቤት ሠራተኛ ደመወዝ	ሕክምና	ትራንስፖርትና መገናኛ	መዝናኛና ትምህርት	የግል ንጽባናና የግል ጽግ ዕቃዎች	ሌሎች ስታዎች		
	General Index	Food Total	Non-Food Total	Beverages	Cigarettes and Tobacco	Clothing and Footwear	House Rent, Construction Materials, Water, and Fuel and Power	Furniture, Furnishings, Household Equipment and Operation	Medical Care and Health	Transport and Communication	Recreation, Entertainment and Education	Personal Care and Effects	Miscellaneous Goods		
ታህሳስ 1999	100.0	100.0	100.0	100.0	100.0	100.0	100.0	100.0	100.0	100.0	100.0	100.0	100.0	100.0	December 2006
ሐምሌ 1999 - ሰኔ 2000	127.8	139.6	108.4	112.4	115.8	109.5	105.8	120.9	112.8	106.6	108.2	117.8	101.6	101.6	July 2007 - June 2008
ሐምሌ 2000 - ሰኔ 2001	172.1	198.7	128.4	198.7	154.5	132.4	118.5	156.1	124.2	113.2	127.4	148.3	103.4	103.4	July 2008 - June 2009
2001															2008/2009
ሐምሌ 2000	180.5	216.5	121.5	190.9	145.5	115.0	115.4	142.5	121.7	116.4	115.2	141.3	103.1	103.1	July 2008
ክሐሴ 2000	182.5	218.0	124.2	199.5	141.2	121.1	117.0	144.1	121.3	116.4	118.1	144.3	103.2	103.2	August "
መስከረም 2001	185.1	221.4	125.5	202.5	145.7	122.6	117.5	149.6	116.6	116.6	121.7	147.8	103.2	103.2	September "
ጥቅምት 2001	185.1	220.9	126.2	201.4	147.0	125.4	118.4	147.1	118.0	122.1	122.1	139.4	103.2	103.2	October "
ገብር 2001	179.9	212.2	126.9	202.5	147.0	129.6	117.7	150.3	118.5	119.0	123.2	142.1	103.2	103.2	November "
ታህሳስ 2001	166.5	190.7	126.8	202.4	148.0	131.4	116.7	152.5	118.5	113.4	123.5	143.4	103.2	103.2	December "
ጥር 2001	164.6	187.8	126.6	201.3	147.7	132.8	115.6	155.6	123.2	107.8	124.0	144.5	103.2	103.2	January 2009
የካቲት 2001	164.8	185.9	130.0	199.1	152.8	136.7	119.2	162.1	123.9	108.2	130.5	148.1	103.2	103.2	February "
መጋቢት 2001	163.5	184.0	129.9	190.9	161.8	138.7	118.0	164.9	129.5	108.4	132.0	152.2	103.9	103.9	March "
ሚያዝያ 2001	165.0	184.5	133.0	197.1	169.1	143.1	120.7	167.3	128.6	108.4	136.8	158.0	103.7	103.7	April "
ግንቦት 2001	163.4	180.8	134.8	198.1	175.6	145.6	122.8	167.1	134.1	109.5	141.2	157.2	103.9	103.9	May "
ሰኔ 2001	164.5	181.9	136.0	198.7	172.1	146.9	123.7	169.7	136.0	112.6	140.4	161.7	103.9	103.9	June "
2002															2009/2010
ሐምሌ 2001	169.6	187.4	140.3	201.6	171.4	151.4	128.3	172.7	137.4	115.7	142.4	172.7	104.0	104.0	July 2009

ወንጠራዎች ስራ፡- ጠቅላላ የ ሽግግር ዋጋ መመዘኛ ሊንደክስ በሥራ የተተተ ክፍሎች ለበጀት ገንዘብ ገምገማ ስራ ለገደብ ገምገማ
 ታህሳስ 1999 = 100

Table 6a: General Consumer Price Index and Its Components for the Benishangul Gumuz Regional State
 December 2006 = 100

ወርና ዓመት	ጠቅላላ ሊንደክስ General Index	ጠቅላላ ምግብ ሊንደክስ Food Total	ጠቅላላ ምግብ ክፍል ሊንደክስ Non-Food Total	Non-food Consumer Price Index Components											Month and Year	
				ምግብ ክፍል ሊንደክስ ክፍሎች Beverages	ሲጃራና ትብብር Cigarettes and Tobacco	ልብና መጫጫ Clothing and Footwear	የቤት ኪራይ፣ የቤት መሥሪያ ስቃዎችናውሃ ነጻጅናሃይል House Rent, Construction Materials, Water, and Fuel and Power	የቤት ስቃዎች የቤት ግብይቶች የቤት ተሳታፊዎች የቤት ሠራተኛ ደመወዝ Furniture, Furnishings, Household Equipment and Operation	ሕክምና Medical Care and Health	ትራንስፖርትና ግንኙነት Transport and Communication	መዝናኛና ትምህርት Recreation, Entertainment and Education	የግል ንጽባናና የግል ጽግ ስቃዎች Personal Care and Effects	ሌሎች ስቃዎች Miscellaneous Goods			
ታህሳስ 1999	100.0	100.0	100.0	100.0	100.0	100.0	100.0	100.0	100.0	100.0	100.0	100.0	100.0	100.0	100.0	December 2006
ኦገስት 1999 - ሰኔ 2000	137.7	148.2	123.7	111.2	113.2	123.8	141.3	114.6	111.0	101.0	112.2	115.2	103.3	103.3	103.3	July 2007 - June 2008
ኦገስት 2000 - ሰኔ 2001	193.9	226.1	151.4	150.0	148.3	156.2	159.4	158.1	143.4	100.7	158.5	146.5	112.4	112.4	112.4	July 2008 - June 2009
2001																2008/2009
ኦገስት 2000	201.4	246.8	141.4	143.3	144.0	140.9	148.4	150.1	130.0	100.4	143.4	137.7	109.2	109.2	109.2	July 2008
ነሐሴ 2000	212.9	262.9	146.9	149.2	143.3	142.0	158.7	151.1	137.4	100.4	154.4	140.4	111.1	111.1	111.1	August "
መስከረም 2001	218.6	272.8	146.8	148.3	137.9	147.2	158.5	146.0	138.1	100.4	155.4	141.3	111.1	111.1	111.1	September "
ጥቅምት 2001	204.7	246.6	149.4	148.6	133.8	151.4	159.4	152.8	138.4	106.9	158.1	139.0	113.3	113.3	113.3	October "
ገዳር 2001	200.6	237.8	151.5	149.5	140.1	160.8	157.6	157.2	140.6	106.9	158.4	143.4	114.4	114.4	114.4	November "
ታህሳስ 2001	186.9	215.0	149.8	148.2	140.0	159.3	152.2	161.1	140.0	106.7	158.8	141.6	116.3	116.3	116.3	December "
ጥር 2001	178.9	199.4	151.8	148.8	141.7	163.4	155.6	161.6	149.0	100.1	158.5	141.4	118.4	118.4	118.4	January 2009
ፕሪብሪ 2001	181.3	202.2	153.6	150.5	144.5	163.9	159.1	163.7	151.8	96.1	158.6	146.3	114.6	114.6	114.6	February "
መጋቢት 2001	184.3	206.8	154.7	150.7	163.1	162.1	161.8	163.2	150.0	96.1	161.7	153.5	113.6	113.6	113.6	March "
ግድብ 2001	184.5	206.1	156.0	153.3	164.3	161.1	165.5	162.9	147.2	96.1	164.1	157.8	107.6	107.6	107.6	April "
ግንቦት 2001	184.4	205.1	157.0	154.1	164.8	161.8	167.6	162.7	149.5	96.1	165.5	157.3	107.6	107.6	107.6	May "
ሰኔ 2001	188.3	211.2	158.1	155.7	161.7	160.4	168.5	164.6	149.5	101.8	165.2	158.4	111.5	111.5	111.5	June "
2002																2009/2010
ኦገስት 2001	200.5	225.5	167.5	156.5	164.0	164.2	184.3	180.9	152.8	105.6	166.7	164.3	112.1	112.1	112.1	July 2009

ወንጠረኛ ገሀ፡- ጠቅላላ የ ሽግግሮች የጋ መመዘኛ ኢንዱስትሪ ቢሥሩ የተሳተፉ ክፍሎች ለድረ-ገጽ ለተጻፈ ካውንታል ታህሳስ 1999 = 100

Table 7a: General Consumer Price Index and Its Components for the Dire Dawa Administrative Council
December 2006 = 100

ወርና ዓመት	ጠቅላላ ኢንዱስትሪ	ጠቅላላ የምግብ ኢንዱስትሪ	ጠቅላላ የምግብ ክፍል ኢንዱስትሪ	Non-food Consumer Price Index Components											Month and Year
				የምግብ ክፍል	ቤዕራና ትምባሆ	ልብና መጫያ	የቤት ኪራይ የቤት መሥሪያ ስቃዎች+ውሃ ነጻጅናሃይል	የቤት ስቃዎች የቤት ግንባታ ስቃዎች የቤት ልማት ስቃዎች	ሕክምና	ትራንስፖርትና ግንኙነት	መዝናኛና ትምህርት	የግል ንጽባናና የግል ጽግ ስቃዎች	ሌሎች ስቃዎች		
	General Index	Food Total	Non-Food Total	Beverages	Cigarettes and Tobacco	Clothing and Footwear	House Rent, Construction Materials, Water, and Fuel and Power	Furniture, Furnishings, Household Equipment and Operation	Medical Care and Health	Transport and Communication	Recreation, Entertainment and Education	Personal Care and Effects	Miscellaneous Goods		
ታህሳስ 1999	100.0	100.0	100.0	100.0	100.0	100.0	100.0	100.0	100.0	100.0	100.0	100.0	100.0	100.0	December 2006
ኦገስት 1999 - ሰኔ 2000	125.6	135.4	115.6	113.2	101.2	109.2	120.9	124.5	115.8	105.5	116.8	108.2	102.9	102.9	July 2007 - June 2008
ኦገስት 2000 - ሰኔ 2001	167.6	199.5	134.7	158.5	113.0	128.2	140.9	157.9	138.8	102.3	136.1	119.5	107.6	107.6	July 2008 - June 2009
2001															2008/2009
ኦገስት 2000	160.4	192.8	126.9	153.3	108.1	113.9	137.4	142.2	126.8	105.4	128.0	113.7	106.3	106.3	July 2008
ነሐሴ 2000	167.9	204.3	130.4	155.3	106.7	117.1	143.1	143.9	139.6	105.4	129.6	114.7	106.3	106.3	August "
መስከረም 2001	168.4	204.4	131.3	156.3	112.6	120.7	142.0	146.5	138.9	105.5	127.7	118.5	106.3	106.3	September "
ጥቅምት 2001	169.8	205.4	133.1	157.0	112.6	124.9	142.8	150.6	138.0	107.4	126.3	116.7	106.3	106.3	October "
ገዳር 2001	167.4	200.7	133.2	157.0	108.6	126.4	139.7	154.6	138.0	100.7	137.5	118.5	106.3	106.3	November "
ታህሳስ 2001	166.5	197.8	134.2	157.0	112.6	129.3	139.1	156.2	138.2	99.2	141.7	119.4	106.3	106.3	December "
ጥር 2001	164.9	195.8	133.1	155.2	114.5	129.8	136.5	154.4	142.3	98.3	141.1	118.3	106.3	106.3	January 2009
ፕሪብሪ 2001	167.8	198.5	136.2	155.4	112.5	135.1	139.2	161.7	140.2	100.4	139.0	119.4	106.3	106.3	February "
መጋቢት 2001	168.4	199.5	136.5	162.7	112.6	130.6	139.2	166.7	141.2	100.6	140.0	123.0	106.3	106.3	March "
ግድሳ 2001	169.5	198.5	139.6	165.9	120.5	134.0	143.7	172.7	139.2	100.6	139.7	122.6	106.3	106.3	April "
ግንቦት 2001	169.7	198.4	140.1	162.9	122.4	137.6	142.2	172.3	141.5	101.6	140.5	121.9	111.5	111.5	May "
ሰኔ 2001	170.5	198.0	142.2	163.9	112.6	138.6	146.5	173.2	140.9	102.3	141.7	127.6	116.7	116.7	June "
2002															2009/2010
ኦገስት 2001	171.3	198.4	143.4	165.2	122.4	140.0	148.6	174.3	140.3	102.3	141.0	127.6	116.7	116.7	July 2009

ጠቅላላ የ ሽግግር ዋጋ መመዘኛ ሊንደክስ በሥሩ የተተካ ክፍሎች ሊጋምቤላ ሕዝቦች ክልል መገንጠት ስራ 1999 = 100

Table 8a: General Consumer Price Index and Its Components for the Gambela Peoples Regional State December 2006 = 100

ወርና ዓመት	ጠቅላላ ሊንደክስ General Index	ጠቅላላ የምግብ ሊንደክስ Food Total	ጠቅላላ የምግብ ክፍል ሊንደክስ Non-Food Total	Non-food Consumer Price Index Components											Month and Year
				የምግብ ክፍል Beverages	ሲጃራና ትታኮ	ልብና መጫጫ Clothing and Footwear	የቤት ኪራይ፣ የቤት መሥሪያ ስቃዎችናውሃ ነጻጅናሃይል House Rent, Construction Materials, Water, and Fuel and Power	የቤት ስቃዎች የቤት ግዝጊያዎች የቤት ሠራተኛ ደመወዝ Furniture, Furnishings, Household Equipment and Operation	ሕክምና Medical Care and Health	ትራንስፖርትና ግንኙነት Transport and Communication	መዝናኛና ትምህርት Recreation, Entertainment and Education	የግል ንጽባናና ሰው ስቃዎች Personal Care and Effects	ሌሎች ስቃዎች Miscellaneous Goods		
ስራ 1999	100.0	100.0	100.0	100.0	100.0	100.0	100.0	100.0	100.0	100.0	100.0	100.0	100.0	0.0	December 2006
ሐምሌ 1999 - ሰኔ 2000	123.7	133.8	111.2	120.8	107.8	108.3	107.6	123.5	116.4	105.9	108.4	103.5	0.0	July 2007 - June 2008	
ሐምሌ 2000 - ሰኔ 2001	193.2	226.8	151.5	193.5	134.2	140.8	145.5	173.5	130.6	112.4	138.6	114.1	0.0	July 2008 - June 2009	
2001															2008/2009
ሐምሌ 2000	197.8	248.8	134.5	161.5	122.0	131.5	124.7	170.1	122.0	114.1	113.5	111.8	0.0	July 2008	
ነሐሴ 2000	217.2	276.8	143.2	161.5	127.0	137.4	141.3	177.1	123.3	114.1	111.8	114.7	0.0	August "	
መስከረም 2001	218.0	269.0	154.5	200.4	130.6	138.1	152.2	177.9	130.2	114.1	127.8	116.6	0.0	September "	
ጥቅምት 2001	219.7	271.2	155.6	200.4	132.3	142.0	152.9	176.2	130.2	114.1	130.7	116.0	0.0	October "	
ገዳር 2001	194.6	224.5	157.5	205.4	132.3	146.4	152.9	176.6	130.2	114.1	142.3	114.7	0.0	November "	
ታህሳስ 2001	180.9	200.8	156.1	199.0	131.2	148.5	153.0	171.2	128.9	110.1	144.2	112.1	0.0	December "	
ጥር 2001	176.3	198.9	148.1	199.0	129.9	137.2	138.2	169.9	128.3	110.1	144.1	111.8	0.0	January 2009	
የካቲት 2001	178.5	198.5	153.6	199.0	133.9	141.6	148.1	174.1	131.0	110.1	143.0	114.3	0.0	February "	
መጋቢት 2001	177.2	197.6	151.9	199.0	136.6	142.2	142.2	175.3	129.5	111.8	145.4	113.7	0.0	March "	
ግዳር 2001	180.5	201.9	153.8	202.6	137.2	139.3	146.4	175.0	133.5	111.8	152.2	114.2	0.0	April "	
ጥቅምት 2001	186.2	212.9	153.1	203.6	144.9	143.4	141.5	169.5	137.4	111.8	153.1	115.0	0.0	May "	
ሰኔ 2001	191.6	220.3	155.9	190.4	152.3	141.5	152.7	169.4	143.2	112.2	155.4	114.8	0.0	June "	
2002															2009/2010
ሐምሌ 2001	197.8	230.0	157.7	190.5	151.4	141.9	157.7	167.5	143.8	112.2	154.7	116.0	0.0	July 2009	

ወገጠራዎች ዓሁ- ጠቅላላ የ ሽግግሮች የጋ መመዘኛ ኢንዱስትሪ ቢሮ የተካተቱ ክፍሎች ለሐረር ክልል ዘመን መገምገምት ታህሳስ 1999 = 100

Table 9a: General Consumer Price Index and Its Components for the Harari People Regional State
December 2006 = 100

ወርና ዓመት	ጠቅላላ ኢንዱስትሪ	ጠቅላላ የምግብ ኢንዱስትሪ	ጠቅላላ የምግብ ክፍል	Non-food Consumer Price Index Components											Month and Year
				የምግብ ክፍል	ቤዕራና ትምባሆ	ልብና መግቢያ	የቤት ኪራይ የቤት መሥሪያ ስቃዎች+ውሃ ነጻጅናሃይል	የቤት ስቃዎች የቤት ግዝጊያዎች የቤት ተሳታፊዎች ደመወዝ	ሕክምና	ትራንስፖርትና መገናኛ	መዝናኛና ትምህርት	የግል ንጽባና ስቃዎች	ሌሎች ስቃዎች		
	General Index	Food Total	Non-Food Total	Beverages	Cigarettes and Tobacco	Clothing and Footwear	House Rent, Construction Materials, Water, and Fuel and Power	Furniture, Furnishings, Household Equipment and Operation	Medical Care and Health	Transport and Communication	Recreation, Entertainment and Education	Personal Care and Effects	Miscellaneous Goods		
ታህሳስ 1999	100.0	100.0	100.0	100.0	100.0	100.0	100.0	100.0	100.0	100.0	100.0	100.0	100.0	100.0	December 2006
ሐምሌ 1999 - ሰኔ 2000	119.1	130.4	108.5	107.9	106.4	111.0	108.8	109.1	99.7	108.8	102.4	117.1	100.7	100.7	July 2007 - June 2008
ሐምሌ 2000 - ሰኔ 2001	169.5	205.1	136.3	159.6	164.8	149.9	131.1	135.0	104.8	124.8	117.7	137.6	118.3	118.3	July 2008 - June 2009
2001															2008/2009
ሐምሌ 2000	163.7	201.0	128.8	154.2	129.8	134.3	130.6	124.1	98.7	130.4	106.9	129.5	116.6	116.6	July 2008
ነሐሴ 2000	170.1	214.3	128.9	153.3	123.6	135.7	129.6	126.5	98.0	130.4	108.1	130.7	116.0	116.0	August "
መስከረም 2001	171.6	213.9	132.0	153.5	123.6	143.8	130.9	128.2	99.3	130.4	115.2	129.1	118.8	118.8	September "
ጥቅምት 2001	173.6	213.9	136.0	156.8	123.6	145.2	139.2	132.0	106.8	131.8	114.5	134.9	118.3	118.3	October "
ገብር 2001	169.4	207.3	134.0	160.7	123.6	145.4	132.6	130.1	107.6	130.8	115.1	139.2	118.8	118.8	November "
ታህሳስ 2001	166.1	198.7	135.7	160.8	151.9	144.2	134.1	132.0	107.3	129.4	117.0	140.1	120.1	120.1	December "
ጥር 2001	165.4	195.9	136.8	160.8	180.7	152.7	128.6	137.9	107.6	118.7	118.7	139.0	117.3	117.3	January 2009
የካቲት 2001	169.5	202.8	138.4	160.5	188.9	155.6	131.0	136.6	106.7	118.7	118.2	140.0	118.5	118.5	February "
መጋቢት 2001	169.5	201.9	139.2	163.5	201.7	156.8	129.3	137.9	108.0	118.7	120.4	142.3	118.5	118.5	March "
ጊያዝያ 2001	170.1	202.3	140.1	163.5	201.7	157.8	129.2	142.0	107.8	118.7	123.4	141.5	118.5	118.5	April "
ግንቦት 2001	170.6	202.6	140.8	164.0	211.9	160.8	125.8	143.9	107.8	119.4	128.0	141.4	118.5	118.5	May "
ሰኔ 2001	174.7	206.5	144.9	163.9	216.0	166.4	132.8	148.9	101.7	120.1	126.3	142.8	119.3	119.3	June "
2002															2009/2010
ሐምሌ 2001	177.3	210.4	146.4	164.3	211.9	166.8	136.0	149.7	101.0	120.8	129.2	144.9	119.8	119.8	July 2009

ወንጠራዥ 100:- ጠቅላላ የ ሽግግሮች ዋጋ መመዘኛ ሊንደክስና ቢሥሩ የተካተቱ ክፍሎች ለአርጌያ ክልላዊ መንግሥት
 ታህሳስ 1999 = 100

Table 10a: General Consumer Price Index and Its Components for the Oromiya Regional State
 December 2006 = 100

ወርና ዓመት	ጠቅላላ ሊንደክስ General Index	ጠቅላላ የምግብ ሊንደክስ Food Total	ጠቅላላ የምግብ ክፍል ሊንደክስ Non-Food Total	Non-food Consumer Price Index Components											Month and Year
				ምግብ ክፍል ሊንደክስ ክፍሎች Beverages	ቪዲዮ ትምባሆ Cigarettes and Tobacco	ልብና መጫጫ Clothing and Footwear	የቤት ኪራይ የቤት መሥሪያ ስቃዎች+ውሃ ነጻጅናሃይል House Rent, Construction Materials, Water, and Fuel and Power	የቤት ስቃዎች የቤት ግንቢያዎች የቤት ተሳታፊዎች የቤት ሠራተኛ ደመወዝ Furniture, Furnishings, Household Equipment and Operation	ሕክምና Medical Care and Health	ትራንስፖርትና ግንኙነት Transport and Communication	መዝናኛና ትምህርት Recreation, Entertainment and Education	የግል ንጽባናና የግል ጽግ ስቃዎች Personal Care and Effects	ሌሎች ስቃዎች Miscellaneous Goods		
ታህሳስ 1999	100.0	100.0	100.0	100.0	100.0	100.0	100.0	100.0	100.0	100.0	100.0	100.0	100.0	100.0	December 2006
ሐምሌ 1999 - ሰኔ 2000	129.0	138.7	115.0	116.5	108.2	118.7	113.6	123.7	108.9	103.3	107.2	113.4	103.2	103.2	July 2007 - June 2008
ሐምሌ 2000 - ሰኔ 2001	179.5	202.0	146.9	182.8	143.8	152.0	142.4	155.0	134.0	106.4	126.3	149.2	118.7	118.7	July 2008 - June 2009
2001															2008/2009
ሐምሌ 2000	188.3	223.8	136.9	168.1	125.6	133.9	135.7	145.8	123.5	108.2	119.9	133.8	115.8	115.8	July 2008
ነሐሴ 2000	190.4	224.8	140.7	177.0	134.2	138.1	138.9	148.0	127.1	108.2	123.6	140.6	116.1	116.1	August "
መስከረም 2001	190.9	226.0	140.1	174.6	133.4	139.6	136.5	148.8	128.8	108.2	124.4	139.8	120.8	120.8	September "
ጥቅምት 2001	187.9	217.9	144.5	180.7	134.6	142.5	141.8	151.9	130.8	120.9	125.9	142.0	118.8	118.8	October "
ገዳር 2001	179.8	204.1	144.6	181.3	135.0	148.3	139.1	153.4	132.8	113.6	126.1	144.9	117.1	117.1	November "
ታህሳስ 2001	168.2	183.9	145.5	179.8	137.0	149.9	142.7	152.4	130.5	107.3	125.4	145.7	113.4	113.4	December "
ጥር 2001	171.7	188.9	146.7	189.2	141.5	151.8	142.4	153.0	131.6	102.0	124.6	147.7	114.4	114.4	January 2009
የካቲት 2001	173.6	190.0	149.9	189.2	152.3	159.3	144.3	158.8	132.6	98.4	125.0	151.2	116.4	116.4	February "
መጋቢት 2001	173.8	189.3	151.2	188.4	156.7	162.6	143.9	160.6	138.4	98.6	129.1	156.9	119.6	119.6	March "
ግድረታ 2001	175.5	191.1	153.0	188.8	157.1	163.9	146.9	161.0	139.1	100.7	130.8	160.2	121.2	121.2	April "
ግንቦት 2001	174.9	189.4	153.9	186.6	158.1	165.1	147.9	162.4	143.3	103.0	129.1	159.6	125.7	125.7	May "
ሰኔ 2001	178.8	194.5	156.1	190.2	160.1	169.5	148.1	163.9	149.6	108.3	132.0	167.4	125.1	125.1	June "
2002															2009/2010
ሐምሌ 2001	178.8	192.7	158.6	189.5	161.4	171.7	150.4	169.1	147.1	111.2	137.3	170.9	127.9	127.9	July 2009

ሠንጠረዥ 11ሁ- ጠቅላላ የ ሽንገሎች ዋጋ መመዘኛ ኢንዱስትሪ ቢሮ የተከተቱ ክፍሎች ለደብዳቤ ክልላዊ መገገሚያ ስህተት 1999 = 100

Table 11a: General Consumer Price Index and Its Components for the SNNP Regional State December 2006= 100

ወርና ዓመት	ጠቅላላ ኢንዱስትሪ	ጠቅላላ የምግብ ኢንዱስትሪ	ጠቅላላ የምግብ ክፍል	Non-food Consumer Price Index Components											Month and Year
				የምግብ ክፍል	ቤዳና ትምባሆ	ልብና መጫጫ	የቤት ኪራይ፣ የቤት መሥሪያ ስቃዎችናውሃ ነጻጅናሃይል	የቤት ስቃዎች የቤት ግብይቶች የቤት ተሳታፊዎች ደመወዝ	ሕክምና	ትራንስፖርትና ጫና	መዝናኛና ትምህርት	የግል ንጽባናና የግል ጽጌ ስቃዎች	ሌሎች ስቃዎች		
	General Index	Food Total	Non-Food Total	Beverages	Cigarettes and Tobacco	Clothing and Footwear	House Rent, Construction Materials, Water, and Fuel and Power	Furniture, Furnishings, Household Equipment and Operation	Medical Care and Health	Transport and Communication	Recreation, Entertainment and Education	Personal Care and Effects	Miscellaneous Goods		
ስህተት 1999	100.0	100.0	100.0	100.0	100.0	100.0	100.0	100.0	100.0	100.0	100.0	100.0	100.0	December 2006	
ሐምሌ 1999 - ሰኔ 2000	125.6	131.1	118.0	118.6	104.0	117.2	117.2	134.3	109.2	124.5	106.8	106.9	106.1	July 2007 - June 2008	
ሐምሌ 2000 - ሰኔ 2001	173.9	189.3	152.7	178.0	133.9	155.9	150.4	175.6	119.3	136.1	122.7	128.3	114.3	July 2008 - June 2009	
2001														2008/2009	
ሐምሌ 2000	184.1	214.7	141.9	171.8	126.2	136.8	141.3	159.7	112.1	139.6	110.0	123.0	108.0	July 2008	
ክለሌ 2000	185.3	214.0	145.9	171.8	128.0	139.4	147.5	165.4	112.0	139.6	111.8	122.5	112.6	August "	
መስከረም 2001	187.5	215.4	149.2	180.3	127.6	143.8	150.3	167.6	116.8	139.6	112.5	123.7	110.4	September "	
ጥቅምት 2001	181.1	201.6	152.8	182.7	128.2	147.0	155.1	170.8	115.9	147.7	114.9	124.8	110.3	October "	
ገብር 2001	172.3	186.0	153.4	178.0	130.8	151.6	154.8	171.3	116.4	143.8	120.3	129.0	112.6	November "	
ታህሳስ 2001	164.9	173.5	153.1	177.3	131.5	156.6	152.0	174.5	116.6	136.3	121.4	126.6	112.6	December "	
ጥር 2001	164.9	173.1	153.5	175.4	130.1	159.1	152.4	172.9	115.8	131.3	127.4	127.0	112.6	January 2009	
ፕሪቲት 2001	166.2	174.9	154.2	178.4	136.8	164.1	148.7	179.3	122.1	128.7	129.4	129.8	117.2	February "	
መጋቢት 2001	166.5	175.4	154.2	178.8	136.1	163.8	148.4	179.4	123.6	129.4	129.3	130.7	118.3	March "	
ግድብ 2001	170.3	180.2	156.5	179.8	140.7	166.9	149.9	188.4	124.0	129.0	130.8	132.7	117.2	April "	
ግንቦት 2001	171.1	180.2	158.6	179.3	146.1	169.4	152.4	189.4	128.7	132.6	132.5	135.4	118.3	May "	
ሰኔ 2001	172.6	182.1	159.5	182.2	144.4	172.2	152.4	188.5	127.8	136.1	132.5	134.4	120.8	June "	
2002														2009/2010	
ሐምሌ 2001	174.6	182.6	163.6	186.9	144.9	175.4	157.2	193.0	131.5	140.6	136.1	135.9	120.3	July 2009	

ወንጠራዎች 12ሁ-ጠቅላላ የ ሽግግሮች የጋ መመዘኛ ሊንደክስና ቢሥሩ የተካተቱ ክፍሎች ለሰግሌ ክልላዊ መንግስት ታህሳስ 1999 = 100

Table 12a: General Consumer Price Index and Its Components for the Somali Regional State
December 2006 = 100

ወርና ዓመት	ጠቅላላ ሊንደክስ General Index	ጠቅላላ የምግብ ሊንደክስ Food Total	ጠቅላላ የምግብ ክፍል ሊንደክስ Non-Food Total	የምግብ ክፍል የሊንደክስ ክፍሎች Non-food Consumer Price Index Components											Month and Year
				መጠጥ Beverages	ቢዳራና ትምባሆ Cigarettes and Tobacco	ልብና መጫጫ Clothing and Footwear	የቤት ኪራይ የቤት መሥሪያ ስቃዎች+ውሃ ነጻጅናሃይል House Rent, Construction Materials, Water, and Fuel and Power	የቤት ስቃዎች የቤት ግንቢያዎች የቤት ተሳታፊዎች የቤት ሠራተኛ ደመወዝ Furniture, Furnishings, Household Equipment and Operation	ሕክምና Medical Care and Health	ትራንስፖርትና መገናኛ Transport and Communication	መዝናኛና ትምህርት Recreation, Entertainment and Education	የግል ንጽባናና ስቃዎች Personal Care and Effects	ሌሎች ስቃዎች Miscellaneous Goods		
ታህሳስ 1999	100.0	100.0	100.0	100.0	100.0	100.0	100.0	100.0	100.0	100.0	100.0	100.0	100.0	100.0	December 2006
ሐምሌ 1999 - ሰኔ 2000	118.5	124.6	108.5	105.8	109.2	111.4	107.9	107.2	133.1	103.5	100.8	99.7	100.8	100.8	July 2007 - June 2008
ሐምሌ 2000 - ሰኔ 2001	170.8	195.9	129.8	134.2	123.1	129.1	128.4	149.6	144.7	115.8	107.8	118.5	131.3	131.3	July 2008 - June 2009
2001															2008/2009
ሐምሌ 2000	167.8	198.2	118.3	110.0	113.6	121.0	116.0	130.9	142.1	112.9	101.5	108.1	113.3	113.3	July 2008
ነሐሴ 2000	174.6	208.6	119.2	127.0	116.1	122.6	114.9	131.4	151.4	112.9	101.7	110.0	113.3	113.3	August "
መስከረም 2001	178.2	212.0	123.1	133.9	121.3	121.7	119.1	141.0	158.5	112.9	101.7	109.7	134.1	134.1	September "
ጥቅምት 2001	175.1	202.5	130.4	133.2	126.5	125.6	132.7	140.6	163.1	117.9	105.6	113.8	134.1	134.1	October "
ገዳር 2001	170.1	193.3	132.3	133.3	123.1	127.1	136.7	141.2	163.7	117.9	108.6	116.1	134.1	134.1	November "
ታህሳስ 2001	154.8	170.6	129.1	133.2	123.1	127.3	128.3	145.0	152.4	113.7	109.3	119.3	134.1	134.1	December "
ጥር 2001	164.3	185.4	130.0	133.2	123.1	126.8	131.0	146.6	141.9	116.0	108.1	119.1	134.1	134.1	January 2009
የካቲት 2001	169.9	194.0	130.7	133.2	123.1	132.1	127.6	156.2	125.1	117.1	105.6	124.2	135.8	135.8	February "
መጋቢት 2001	169.3	191.1	133.8	142.1	123.1	135.5	131.1	162.4	123.6	117.1	107.5	123.1	135.8	135.8	March "
ግድምት 2001	171.9	194.6	135.0	146.4	123.1	133.9	133.4	164.2	129.2	117.1	107.7	127.9	135.8	135.8	April "
ግንቦት 2001	173.5	196.3	136.2	142.9	123.1	136.5	134.0	167.2	131.4	117.1	114.9	125.2	135.8	135.8	May "
ሰኔ 2001	179.5	203.8	139.8	142.4	138.5	138.6	136.1	168.9	154.3	117.3	121.4	125.7	135.8	135.8	June "
2002															2009/2010
ሐምሌ 2001	178.9	202.3	140.8	142.8	156.1	139.5	133.3	169.7	165.6	117.6	118.8	125.6	135.8	135.8	July 2009

ሠንጠረዥ 13ሀ፡- ጠቅላላ የ ሽግግር ዋጋ መመዘኛ ሊንደክስ በሥሩ የተተካ ክፍሎች ለትግራይ ክልል መገንጠት ታህሳስ 1999 = 100

Table 13a: General Consumer Price Index and Its Components for the Tigray Regional State
December 2006 = 100

ወርና ዓመት	ጠቅላላ ሊንደክስ General Index	ጠቅላላ የምግብ ሊንደክስ Food Total	ጠቅላላ የምግብ ክፍል ሊንደክስ Non-Food Total	Non-food Consumer Price Index Components											Month and Year
				የምግብ ክፍል ሊንደክስ ክፍሎች Beverages	ሲጃራና ትምባሆ Cigarettes and Tobacco	ልብና መጫጫ Clothing and Footwear	የቤት ኪራይ የቤት መሥሪያ ስቃዎች+ውሃ ነጻጅናሃይል House Rent, Construction Materials, Water, and Fuel and Power	የቤት ስቃዎች የቤት ግብይቶች የቤት ተሳታፊዎች የቤት ሠራተኛ ደመወዝ Furniture, Furnishings, Household Equipment and Operation	ሕክምና Medical Care and Health	ትራንስፖርትና ግንኙነት Transport and Communication	መዝናኛና ትምህርት Recreation, Entertainment and Education	የግል ንጽባናና የግል ጽግ ስቃዎች Personal Care and Effects	ሌሎች ስቃዎች Miscellaneous Goods		
ታህሳስ 1999	100.0	100.0	100.0	100.0	100.0	100.0	100.0	100.0	100.0	100.0	100.0	100.0	100.0	100.0	December 2006
ሐምሌ 1999 - ሰኔ 2000	130.1	143.4	111.7	112.2	101.6	119.7	107.8	120.2	104.7	99.1	105.0	105.8	116.0	July 2007 - June 2008	
ሐምሌ 2000 - ሰኔ 2001	183.0	214.8	139.4	188.8	117.4	161.4	131.1	151.8	106.4	101.4	113.3	126.5	134.5	July 2008 - June 2009	
2001														2008/2009	
ሐምሌ 2000	187.5	230.2	128.7	190.7	109.1	138.7	123.4	139.9	101.0	105.6	108.3	114.8	127.2	July 2008	
ነሐሴ 2000	192.7	237.7	130.9	190.1	108.9	144.1	124.2	146.8	104.5	105.6	110.6	109.8	128.5	August "	
መስከረም 2001	199.3	244.3	137.4	186.8	117.0	154.1	132.6	146.9	107.2	105.8	113.7	109.3	143.6	September "	
ጥቅምት 2001	198.5	241.1	140.0	183.9	112.1	155.5	135.8	151.9	110.4	116.3	111.7	109.4	139.0	October "	
ገዳር 2001	187.8	223.4	138.9	179.2	109.6	160.9	130.7	150.8	100.5	112.1	114.4	115.6	140.3	November "	
ታህሳስ 2001	177.8	206.8	138.0	182.8	114.2	159.9	132.1	149.0	101.2	100.9	113.8	107.6	139.3	December "	
ጥር 2001	174.3	200.8	137.8	182.7	113.8	160.4	132.4	151.1	104.9	95.1	112.0	109.3	132.3	January 2009	
የካቲት 2001	174.8	200.2	140.0	184.9	113.0	168.5	129.6	151.0	108.3	94.7	110.2	136.4	126.2	February "	
መጋቢት 2001	176.9	203.3	140.6	189.1	111.9	169.1	129.2	151.6	107.6	95.2	111.3	138.2	132.3	March "	
ግድሃት 2001	178.0	203.7	142.8	184.5	121.8	170.6	132.5	154.2	110.5	94.2	114.4	145.4	128.5	April "	
ግንቦት 2001	173.1	191.6	147.7	205.7	131.4	175.7	134.8	163.2	110.1	95.5	117.4	154.3	135.9	May "	
ሰኔ 2001	175.8	194.3	150.3	205.7	146.5	179.0	135.7	164.9	110.2	96.3	122.2	167.2	141.0	June "	
2002														2009/2010	
ሐምሌ 2001	179.9	198.2	154.8	196.5	161.8	188.0	140.8	167.1	111.2	108.7	124.3	171.7	128.8	July 2009	

ወጠረዥ 1ሐ፡ ጠቅላላ የምግብ ክፍሎች የ ሽግግር ዋጋ መመዘኛ ሊገደድበት በሀገር አቀፍ ደረጃ
 ታህሳስ 1999 = 100

Table 1b: Consumer Price Index of Total Food and Its Components at Country Level
 December 2006 = 100

ወርና ዓመት	ጠቅላላ የምግብ	እህል	በቤት ውስጥ የተወለዱ የምግብ ዓይነቶች			FOOD TAKEN AT HOME					ሌሎች የምግብ	የግንባራ አገልግሎት	ከቤት ውጪ የተወለዱ የምግብ	Month and Year		
			ጥራጥራ	ዳቦና ሌሎች የተዘጋጁ የምግብ	ሥጋ	ወተት+ ዓይብና እንቁላል	ዘይትና ቅብቶች	እትክልትና ፍራፍራ	ቅመግ ቅመም	ደገትና ሌሎች ሥራሥርቶች					ያልተቆላ ቡናና ሻይ ቅጠል	ሌሎች የምግብ
ታህሳስ 1999	100.0	100.0	100.0	100.0	100.0	100.0	100.0	100.0	100.0	100.0	100.0	100.0	100.0	100.0	100.0	December 2006
ሐምሌ 1999 - ሰኔ 2000	137.2	137.2	124.1	137.6	120.0	117.7	152.6	142.0	325.9	125.7	124.5	104.7	113.9	118.7	118.7	July 2007 - June 2008
ሐምሌ 2000 - ሰኔ 2001	198.0	239.8	169.9	225.5	149.6	159.5	170.3	168.0	272.1	188.3	143.3	164.7	129.6	151.1	151.1	July 2008 - June 2009
2001																2008/2009
ሐምሌ 2000	216.6	285.9	172.7	211.8	144.0	145.2	181.6	140.0	415.8	178.0	139.1	137.5	126.1	140.1	140.1	July 2008
ክሌሌ 2000	218.5	287.5	173.3	223.2	145.4	148.6	176.5	153.1	412.8	177.6	138.7	147.1	125.8	142.8	142.8	August "
መስከረም 2001	220.6	290.2	175.9	225.0	151.3	155.4	181.1	156.8	390.9	178.4	141.2	149.6	127.4	146.6	146.6	September "
ጥቅምት 2001	214.3	277.6	176.8	231.2	150.4	157.5	178.1	150.5	351.9	177.0	141.9	147.3	128.6	148.0	148.0	October "
ኅዳር 2001	202.2	252.1	173.9	234.2	148.1	156.0	172.2	145.8	314.4	175.6	141.3	154.3	127.9	148.3	148.3	November "
ታህሳስ 2001	184.3	214.3	162.9	225.0	146.6	150.6	166.2	147.0	275.7	175.7	138.6	158.4	126.3	149.9	149.9	December "
ጥር 2001	185.3	215.2	162.7	224.1	147.3	157.5	164.4	158.5	232.1	186.7	140.4	171.7	125.6	152.8	152.8	January 2009
የኮቲት 2001	186.1	212.8	167.5	228.3	147.8	164.0	162.8	172.3	202.2	198.0	144.6	178.7	129.0	153.5	153.5	February "
መገቢት 2001	185.9	210.3	164.8	226.1	148.8	161.5	163.5	188.8	183.0	203.5	147.6	179.7	130.3	156.5	156.5	March "
ግድም 2001	187.8	211.8	168.5	220.9	157.5	167.2	167.6	194.3	173.1	206.7	149.2	181.8	133.2	157.0	157.0	April "
ግንቦት 2001	185.6	207.4	171.2	227.7	153.4	172.7	166.4	203.1	159.6	196.3	147.1	185.5	135.7	157.6	157.6	May "
ሰኔ 2001	188.6	212.4	169.2	228.6	154.5	177.9	163.5	205.8	153.5	206.1	149.6	184.5	139.0	160.0	160.0	June "
2002																2009/2010
ሐምሌ 2001	189.7	219.1	169.0	231.7	154.9	174.5	161.1	173.7	176.0	184.5	155.3	187.5	142.0	162.3	162.3	July 2009

ሠንጠረዥ 2ሀ፡- የምግብ ዋጋ መመዘኛ ለገቢዎች ግብዓት በአገር አቀፍ እና በክልሎች ደረጃ
 ታህሳስ 1999 = 100

Table 2b: Summary of Consumer Price Indices of Food at Country and Regional Levels
 December 2006=100

ወርና ዓመት	Reporting Level											Month and Year	
	Eth.	A.A.	Afar	Amhara	B.Gumuz	D.Dawa	Gambela	Harari	Oromia	SNNP	Somalia		Tigray
ታህሳስ 1999	100.0	100.0	100.0	100.0	100.0	100.0	100.0	100.0	100.0	100.0	100.0	100.0	December 2006
ሐምሌ 1999 - ሰኔ 2000	137.2	134.8	136.1	139.6	148.2	135.4	133.8	130.4	138.7	131.1	124.6	143.4	July 2007 - June 2008
ሐምሌ 2000 - ሰኔ 2001	198.0	190.7	189.5	198.7	226.1	199.5	226.8	205.1	202.0	189.3	195.9	214.8	July 2008 - June 2009
2001													2008/2009
ሐምሌ 2000	216.6	195.2	198.7	216.5	246.8	192.8	248.8	201.0	223.8	214.7	198.2	230.2	July 2008
ክሌሌ 2000	218.5	197.5	200.6	218.0	262.9	204.3	276.8	214.3	224.8	214.0	208.6	237.7	August "
መስከረም 2001	220.6	198.8	201.0	221.4	272.8	204.4	269.0	213.9	226.0	215.4	212.0	244.3	September "
ጥቅምት 2001	214.3	196.8	200.0	220.9	246.6	205.4	271.2	213.9	217.9	201.6	202.5	241.1	October "
ኅዳር 2001	202.2	194.8	192.5	212.2	237.8	200.7	224.5	207.3	204.1	186.0	193.3	223.4	November "
ታህሳስ 2001	184.3	184.8	180.2	190.7	215.0	197.8	200.8	198.7	183.9	173.5	170.6	206.8	December "
ጥር 2001	185.3	181.9	180.1	187.8	199.4	195.8	198.9	195.9	188.9	173.1	185.4	200.8	January 2009
የኮቲት 2000	186.1	183.4	182.1	185.9	202.2	198.5	198.5	202.8	190.0	174.9	194.0	200.2	February "
መገቢት 2001	185.9	186.0	181.5	184.0	206.8	199.5	197.6	201.9	189.3	175.4	191.1	203.3	March "
ግድለት 2001	187.8	189.4	185.0	184.5	206.1	198.5	201.9	202.3	191.1	180.2	194.6	203.7	April "
ግንቦት 2001	185.6	191.0	185.3	180.8	205.1	198.4	212.9	202.6	189.4	180.2	196.3	191.6	May "
ሰኔ 2001	188.6	189.3	187.2	181.9	211.2	198.0	220.3	206.5	194.5	182.1	203.8	194.3	June "
2002													2009/2010
ሐምሌ 2001	189.7	191.4	188.4	187.4	225.5	198.4	230.0	210.4	192.7	182.6	202.3	198.2	July 2009

ሠንጠረዥ 3 ለ:- ጠቅላላ የሽግግር ዋጋ መመዘኛ ኢንዱክስ በሥሩ የተከተሉ ክፍሎች ለአዲስ አበባ ከተማ መስተዳድር ታህሳስ 1999 = 100

Table 3b: Consumer Price Index of Total Food and Its Components for Addis Ababa City Administration December 2006 = 100

ወርና ዓመት	ጠቅላላ ምግብ	አህል	በቤት ውስጥ የተወለዱ የምግብ ዓይነቶች			FOOD TAKEN AT HOME					ሌሎች ምግቦች	የግንባራ አገልግሎት	ከቤት ውጪ የተወለዱ ምግቦች	Month and Year	
			ጥራጥራ	ዳቦና ሌሎች የተዘጋጁ ምግቦች	ሥጋ	ወተት+ ዓይብና እንቁላል	ዘይትና ቅባቶች	እትክልትና ፍራፍራ	ቅመም	ደገትና ሌሎች ሥራሥርቶች					ያልተቆላ ቡናና ሻይ ቅጠል
ታህሳስ 1999	100.0	100.0	100.0	100.0	100.0	100.0	100.0	100.0	100.0	100.0	100.0	100.0	100.0	100.0	December 2006
ሐምሌ 1999 - ሰኔ 2000	134.8	122.2	134.5	134.6	118.9	129.4	145.3	134.2	320.3	206.6	128.5	105.9	119.7	120.6	July 2007 - June 2008
ሐምሌ 2000 - ሰኔ 2001	190.7	213.2	192.8	217.4	153.7	182.2	166.2	183.0	252.2	288.8	137.3	159.8	139.7	156.1	July 2008 - June 2009
2001															2008/2009
ሐምሌ 2000	195.2	213.4	197.9	215.3	152.4	168.1	175.9	161.4	394.8	324.2	141.3	136.4	139.6	146.8	July 2008
ክሌሌ 2000	197.5	220.4	201.6	212.7	147.2	167.8	170.9	207.6	388.0	233.7	138.1	144.3	141.3	147.4	August "
መስከረም 2001	198.8	226.6	204.3	212.8	159.7	181.9	172.2	195.5	347.8	242.9	139.5	143.7	138.5	149.1	September "
ጥቅምት 2001	196.8	231.8	205.1	218.3	157.6	183.1	170.9	160.7	313.4	251.6	140.5	134.5	141.1	154.0	October "
ኅዳር 2001	194.8	233.4	200.6	217.3	156.0	181.4	163.5	153.3	277.4	313.2	136.0	137.2	139.2	154.8	November "
ታህሳስ 2001	184.8	204.8	191.1	214.2	150.0	179.7	161.5	154.5	271.6	263.7	133.9	149.0	137.2	153.7	December "
ጥር 2001	181.9	202.0	188.8	214.3	148.9	182.6	159.5	156.8	209.5	264.9	134.1	168.4	137.0	154.3	January 2009
የኮቲት 2001	183.4	203.8	179.9	216.8	150.2	180.7	155.7	167.3	195.5	312.4	136.5	172.4	139.0	157.0	February "
መጋቢት 2001	186.0	204.0	188.4	221.0	150.7	184.4	156.3	190.7	175.5	328.0	137.3	176.2	141.2	157.5	March "
ግድሃኛ 2001	189.4	206.3	187.5	225.4	154.7	182.3	168.1	211.3	157.4	321.8	135.1	180.1	142.1	161.3	April "
ግንቦት 2001	191.0	207.5	186.0	217.3	157.5	191.8	169.4	229.5	149.1	318.0	138.0	187.7	140.1	169.0	May "
ሰኔ 2001	189.3	204.7	182.5	223.8	159.1	203.1	170.3	207.6	146.7	290.9	137.6	188.1	140.1	168.1	June "
2002															2009/2010
ሐምሌ 2001	191.4	210.6	178.1	233.0	163.0	211.6	165.7	183.9	163.4	255.3	137.2	189.5	149.0	172.8	July 2009

ወንጠረኛ ልሳ- ጠቅላላ የምግብ ድርጅት የግንዛቤ ደንብ ለአፋር ክልል የግንዛቤ ደንብ ለአፋር ክልል የግንዛቤ ደንብ
 ታህሳስ 1999 = 100

Table 4b: Consumer Price index of Total Food and Its Components for the Afar Regional State

December 2006 = 100

ወር ዓመት	ጠቅላላ ምግብ	አህል	በቤት ውስጥ የተወሰዱ የምግብ ዓይነቶች			FOOD TAKEN AT HOME							ከቤት ውጭ የተወሰዱ ምግቦች	Month and Year	
			ጥራጥራ	ዓቦና ሌሎች የተዘጋጁ ምግቦች	ሥጋ	ወተት+ ዓይብና እንቁላል	ዘይትና ቅብቶች	እትክልትና ፍራፍራ	ቅመግ ቅመጥ	ድንችና ሌሎች ሥራሥሮች	ቃልተቆላ ቡናና ሻይ ቅጠል	ሌሎች ምግቦች			የግንብራጫ አገልግሎት
ታህሳስ 1999	100.0	100.0	100.0	100.0	100.0	100.0	100.0	100.0	100.0	100.0	100.0	100.0	100.0	100.0	December 2006
ሐምሌ 1999 - ሰኔ 2000	136.1	124.6	147.1	127.1	140.1	139.8	151.6	138.8	341.4	151.8	105.8	94.9	101.8	121.1	July 2007 - June 2008
ሐምሌ 2000 - ሰኔ 2001	189.5	206.5	205.3	229.3	178.5	180.0	174.1	192.5	275.7	233.8	143.2	137.1	119.7	170.3	July 2008 - June 2009
2001															2008/2009
ሐምሌ 2000	198.7	222.3	218.7	219.2	170.1	196.4	188.7	154.7	452.6	242.5	130.2	109.2	113.1	162.1	July 2008
ክሐሴ 2000	200.6	235.8	224.3	223.0	175.8	178.1	184.3	196.4	389.1	242.5	138.3	118.2	116.5	165.4	August "
መስከረም 2001	201.0	237.1	229.5	224.7	177.4	176.4	174.0	194.0	389.7	225.1	140.2	122.9	128.2	167.8	September "
ጥቅምት 2001	200.0	240.0	233.0	229.0	172.7	176.6	172.8	182.7	336.9	228.3	140.1	124.9	122.6	170.0	October "
ኅዳር 2001	192.5	219.7	230.5	223.4	168.4	177.5	171.7	171.9	319.0	232.9	140.8	124.3	120.4	167.9	November "
ታህሳስ 2001	180.2	193.5	194.0	215.7	157.5	176.5	170.0	160.5	282.7	223.7	137.0	123.1	120.4	171.1	December "
ጥር 2001	180.1	190.1	197.1	212.8	166.8	182.7	169.4	159.7	246.1	223.3	138.8	135.6	120.4	168.9	January 2009
የኮቲት 2001	182.1	190.1	190.2	230.5	165.7	186.4	174.2	173.6	210.8	228.3	137.4	149.9	119.1	172.1	February "
መገቢት 2001	181.5	188.1	188.4	241.6	167.9	177.0	175.9	195.4	203.9	232.4	136.9	149.3	119.1	173.1	March "
ጊዮርጊስ 2001	185.0	186.4	188.6	243.0	210.1	177.9	173.5	202.3	169.3	241.6	156.4	163.6	119.1	174.7	April "
ግንቦት 2001	185.3	186.6	185.7	244.5	203.2	177.7	167.6	262.3	155.3	246.1	154.4	161.2	119.1	171.4	May "
ሰኔ 2001	187.2	188.3	183.5	244.2	206.5	177.3	166.7	256.3	153.2	238.8	168.0	163.5	119.1	178.7	June "
2002															2009/2010
ሐምሌ 2001	188.4	193.2	185.4	241.9	193.1	176.5	169.2	237.4	171.6	242.5	171.1	174.0	119.1	178.3	July 2009

ወንጠረኛ 5A:- ጠቅላላ የምግብ ክፍሎች የ ሽግግር ዋጋ መመዘኛ ለገቢ ለላግራ ክልላዊ መገንጠት ታህሳስ 1999 = 100

Table 5b: Consumer Price Index of Total Food and Its Components for the Amhara Regional State December 2006 = 100

ወር ዓመት	ጠቅላላ ምግብ	አህል	በቤት ውስጥ የተወለዱ የምግብ ዓይነቶች			FOOD TAKEN AT HOME							ከቤት ውጭ የተወለዱ ምግብ	Month and Year	
			ጥራጥራ	ዳቦና ሌሎች የተዘጋጁ ምግቦች	ሥጋ	ወተት+ ዓይጣና እንቁላል	ዘይትና ቅብቶች	እትክልትና ፍራፍራ	ቅመም	ድገትና ሌሎች ሥራሥሮች	ቃልተቆላ ቤናና ሻይ ቅጠል	ሌሎች ምግቦች			የግዝራጫ አገልግሎት
ታህሳስ 1999	100.0	100.0	100.0	100.0	100.0	100.0	100.0	100.0	100.0	100.0	100.0	100.0	100.0	100.0	December 2006
ሐምሌ 1999 - ሰኔ 2000	139.6	137.6	117.9	131.0	117.8	125.6	161.8	129.4	297.0	122.1	125.2	105.8	106.7	121.4	July 2007 - June 2008
ሐምሌ 2000 - ሰኔ 2001	198.7	231.9	163.4	215.5	144.6	178.9	183.7	160.6	248.5	188.8	140.1	183.2	121.2	158.7	July 2008 - June 2009
2001															2008/2009
ሐምሌ 2000	216.5	262.0	165.8	201.9	131.4	158.7	188.8	133.2	386.8	180.5	135.7	151.4	112.4	145.5	July 2008
ክሌሌ 2000	218.0	261.0	172.1	207.9	132.9	178.0	191.9	158.4	376.3	185.6	137.4	155.6	111.8	149.0	August "
መስከረም 2001	221.4	269.1	172.3	210.3	141.8	174.5	189.8	154.6	346.5	184.5	137.2	157.2	115.9	157.1	September "
ጥቅምት 2001	220.9	271.0	172.9	218.1	142.2	173.6	189.7	135.7	323.6	176.4	142.8	161.0	124.9	156.3	October "
ኅዳር 2001	212.2	255.6	171.3	217.9	140.8	174.3	185.5	134.2	297.1	174.1	142.3	175.2	123.5	158.0	November "
ታህሳስ 2001	190.7	216.9	162.4	213.5	141.0	173.2	178.2	134.8	256.5	169.9	139.8	179.7	123.4	159.7	December "
ጥር 2001	187.8	215.2	160.5	214.6	142.5	175.0	178.6	138.2	214.2	165.8	140.7	196.2	120.0	161.1	January 2009
የኮረብታ 2001	185.9	210.1	161.7	219.4	144.1	183.7	179.6	167.7	184.2	207.5	140.0	203.5	121.6	160.8	February "
መገቢት 2001	184.0	208.7	153.0	220.8	148.4	184.9	177.9	179.6	164.3	208.0	139.7	203.1	124.0	164.2	March "
ጊዮርጊስ 2001	184.5	208.4	155.9	219.0	167.9	187.1	180.9	184.1	148.1	208.0	140.7	204.9	122.6	162.9	April "
ግንቦት 2001	180.8	201.3	156.8	222.0	149.1	188.5	183.5	202.7	144.3	208.6	140.1	206.0	125.2	163.8	May "
ሰኔ 2001	181.9	203.4	156.5	220.2	153.0	195.6	179.6	204.1	139.9	197.1	144.4	204.1	128.9	165.8	June "
2002															2009/2010
ሐምሌ 2001	187.4	212.4	157.0	225.0	151.2	193.9	179.0	180.6	165.9	197.7	146.1	206.4	133.6	168.5	July 2009

ወንጠራዥ ገለጻ፡፡ ጠቅላላ የምግብና የምግብ ክፍሎች የ ሽንገቶች ዋጋ መመዘኛ እንደገቢ ለደረጃዋ ለስተዳደር ካውንስል ታህሳስ 1999 = 100

Table 7b: Consumer Price Index of Total Food and Its Components for the Dire Dawa Administrative Council December 2006 = 100

ወርና ዓመት	ጠቅላላ የምግብ	እህል	በቤት ውስጥ የተወለዱ የምግብ ዓይነቶች			FOOD TAKEN AT HOME					ክፍት ውጪ የተወለዱ የምግቦች	Month and Year			
			ጥራጥረ	ዳቦና ሌሎች የተዘጋጁ የምግቦች	ሥጋ	ወተት+ ዓይብና እንቁላል	ዘይትና ቅብቶች	እትክልትና ፍራፍራ	ቅመም	ደገትና ሌሎች ሥራሥሮች			ያልተቆላ ቡናና ሻይ ቅጠል	ሌሎች የምግቦች	የግንባራ አገልግሎት
	Food Total	Cereals	Pulses	Bread and other Prepared Food	Meat	Milk,Cheese and Egg	Oils and Fats	Vegetables and Fruits	Spices	Potatoes, Other Tubers and Stems	Coffee (beans, whole) and Tea Leaves	Other Food Items	Milling Charges	Food taken away from home	
ታህሳስ 1999	100.0	100.0	100.0	100.0	100.0	100.0	100.0	100.0	100.0	100.0	100.0	100.0	100.0	100.0	December 2006
ሐምሌ 1999 - ሰኔ 2000	135.4	140.9	148.3	127.9	107.8	118.5	151.7	132.9	353.5	167.6	133.9	95.4	90.7	114.7	July 2007 - June 2008
ሐምሌ 2000 - ሰኔ 2001	199.5	240.3	197.8	236.8	130.0	177.9	183.5	183.0	298.6	221.9	161.8	114.0	95.5	176.8	July 2008 - June 2009
2000															2008/2009
ሐምሌ 2000	192.8	240.9	200.4	191.3	130.5	157.7	197.1	165.6	453.3	278.2	150.5	110.4	95.9	167.1	July 2008
ክሌሌ 2000	204.3	262.0	209.4	205.7	127.9	164.0	194.2	171.8	431.3	201.0	150.2	112.2	95.9	217.1	August "
መስከረም 2001	204.4	262.4	210.2	232.1	127.8	163.3	186.2	176.2	409.0	198.8	151.1	112.5	95.9	171.2	September "
ጥቅምት 2001	205.4	265.4	209.4	240.2	127.8	172.2	185.4	171.7	352.0	200.4	152.8	112.1	95.3	169.9	October "
ኅዳር 2001	200.7	244.8	208.9	242.3	131.1	178.7	180.7	157.1	325.4	205.3	163.3	112.5	95.3	170.0	November "
ታህሳስ 2001	197.8	233.8	199.6	246.0	128.4	176.5	176.7	153.3	341.9	208.8	173.2	114.0	95.3	154.7	December "
ጥር 2001	195.8	228.0	187.5	243.9	130.9	176.6	177.5	181.4	271.3	236.2	168.9	114.5	95.3	161.1	January 2009
የኮቲት 2001	198.5	229.4	186.1	248.7	131.4	176.6	177.5	185.0	271.3	254.1	168.3	114.5	95.3	174.1	February "
መገቢት 2001	199.5	228.8	191.0	252.3	124.3	187.7	187.2	194.4	217.5	245.2	170.7	115.3	95.3	174.2	March "
ግድም 2001	198.5	229.6	190.9	243.5	129.0	190.3	183.4	191.2	179.6	227.6	172.8	116.0	95.3	188.5	April "
ግንቦት 2001	198.4	228.8	191.7	247.4	132.4	189.3	178.7	220.1	164.5	205.0	164.7	116.0	95.3	186.9	May "
ሰኔ 2001	198.0	229.5	188.1	248.0	137.8	202.2	177.6	228.5	165.6	201.7	154.9	117.7	95.3	186.5	June "
2002															2009/2010
ሐምሌ 2001	198.4	229.2	187.5	244.9	140.9	194.1	176.0	218.5	204.2	214.0	165.4	116.5	104.9	172.7	July 2009

ሠንጠረዥ 8ላ፡- ጠቅላላ የምግብ ድርሰት የ ሽንገሎች የጋ ጠቅላላ ሊገደብን ሊጋጥሙ ለጋምቤላ ሕዝቦች ዘላቂ መገንጠት ታህሳስ 1999 = 100

Table 8b: Consumer Price Index of Total Food and Its Components for the Gambela Peoples Regional State December 2006 = 100

ወርና ዓመት	ጠቅላላ ምግብ	እህል	በቤት ውስጥ የተወለዱ የምግብ ዓይነቶች			FOOD TAKEN AT HOME					የልተቆላ ቡናና ሻይ ቅጠል	ሌሎች ምግቦች	የግንብረት አገልግሎት	ከቤት ውጪ የተወለዱ ምግቦች	Month and Year	
			ጥራጥራ	ዳቦና ሌሎች የተዘጋጁ ምግቦች	ሥጋ	ወተት+ ዓይብና እንቁላል	ዘይትና ቅብቶች	እትክልትና ፍራፍራ	ቅመግ ቅመም	ደገትና ሌሎች ሥራሥርቶች						ቆይታ
ታህሳስ 1999	100.0	100.0	100.0	100.0	100.0	100.0	100.0	100.0	100.0	100.0	100.0	100.0	100.0	100.0	100.0	December 2006
ሐምሌ 1999 - ሰኔ 2000	133.8	124.8	141.2	167.1	131.8	131.5	150.1	138.5	411.3	142.3	124.0	112.4	110.4	133.2	July 2007 - June 2008	
ሐምሌ 2000 - ሰኔ 2001	226.8	253.3	294.1	360.5	153.4	201.1	167.9	224.5	313.5	219.5	122.9	165.6	126.7	167.0	July 2008 - June 2009	
2000															2008/2009	
ሐምሌ 2000	248.8	314.2	274.3	339.8	142.7	140.9	171.0	185.4	433.9	219.8	134.2	157.7	115.5	166.8	July 2008	
ክሌሌ 2000	276.8	370.9	275.9	343.3	143.1	148.2	169.9	185.4	433.9	237.2	135.4	156.8	115.5	166.8	August "	
መስከረም 2001	269.0	338.2	309.0	373.0	144.2	170.3	167.3	228.0	433.9	237.2	132.3	155.6	129.1	166.8	September "	
ጥቅምት 2001	271.2	338.0	308.1	366.5	145.2	179.6	166.3	244.8	433.9	237.2	133.5	165.9	129.1	167.8	October "	
ኅዳር 2001	224.5	233.8	319.8	366.7	163.0	209.0	170.0	235.2	433.9	237.2	133.7	166.4	129.1	166.8	November "	
ታህሳስ 2001	200.8	196.0	281.7	371.3	159.6	268.0	166.5	227.1	304.1	213.0	123.4	157.7	129.1	166.8	December "	
ጥር 2001	198.9	198.0	281.2	361.4	158.8	226.4	169.8	217.8	219.0	212.3	123.8	165.3	132.2	166.8	January 2009	
የኮቲት 2001	198.5	196.7	281.3	354.0	159.9	212.5	170.1	222.2	219.0	219.8	110.3	172.1	132.2	166.8	February "	
መገቢት 2001	197.6	195.1	285.0	359.2	159.4	207.1	168.2	222.3	219.0	211.9	112.4	171.5	134.4	167.1	March "	
ግድሥት 2001	201.9	206.7	297.3	357.3	154.0	208.8	166.7	218.2	192.6	214.6	105.4	164.4	136.5	167.1	April "	
ግንቦት 2001	212.9	221.0	307.7	361.7	154.8	219.6	165.5	245.7	221.2	196.4	113.7	173.7	122.3	166.8	May "	
ሰኔ 2001	220.3	231.2	307.6	371.8	156.7	222.6	163.9	261.2	217.5	197.2	116.9	180.5	115.5	167.7	June "	
2002															2009/2010	
ሐምሌ 2001	230.0	252.7	306.8	378.3	161.7	227.4	157.4	256.4	217.5	168.4	125.0	184.0	115.5	167.4	July 2009	

ሠንጠረዥ 9ብ፡- ጠቅላላ የምግብ ወጪ ስርዓት የሽያጭ ዋጋ መመዘኛ ሊንደክስ ለሐረር ክልል ወገን ሥጦት
 ታህሳስ 1999 = 100

Table 9b: Consumer Price Index of Total Food and Its Components for the Harari People Regional State
 December 2006 = 100

ወርና ዓመት	ጠቅላላ የምግብ	እህል	በቤት ውስጥ የተወለዱ የምግብ ዓይነቶች			FOOD TAKEN AT HOME					የልተቆላ ቡናና ሻይ ቅጠል	ሌሎች የምግብ ስጦቶች	የግንብራጫ አገልግሎት	ከቤት ውጪ የተወለዱ የምግብ	Month and Year	
			ጥራጥራ	ዳቦና ሌሎች የተዘጋጁ የምግቦች	ሥጋ	ወተት+ ዓይብና እንቆላል	ዘይትና ቅብቶች	እትክልትና ፍራፍራ	ቅመግ ቅመም	ደገትና ሌሎች ሥራሥርቶች						የምግብ ስጦቶች
ታህሳስ 1999	100.0	100.0	100.0	100.0	100.0	100.0	100.0	100.0	100.0	100.0	100.0	100.0	100.0	100.0	100.0	December 2006
ሐምሌ 1999 - ሰኔ 2000	130.4	128.3	129.6	124.0	112.4	120.7	160.5	154.9	312.5	182.1	119.6	101.4	101.9	123.1	123.1	July 2007 - June 2008
ሐምሌ 2000 - ሰኔ 2001	205.1	228.0	164.6	244.8	141.2	154.9	191.3	171.7	285.4	227.0	216.9	120.4	125.9	177.8	177.8	July 2008 - June 2009
2000																2008/2009
ሐምሌ 2000	201.0	232.6	156.0	239.9	140.0	170.4	201.5	147.8	408.5	318.9	179.6	114.9	115.5	164.0	164.0	July 2008
ክሌሌ 2000	214.3	246.6	167.1	240.2	148.4	179.7	208.0	180.0	404.2	232.2	214.3	117.3	115.5	171.9	171.9	August "
መስከረም 2001	213.9	248.3	168.7	247.9	143.5	170.6	204.1	158.6	380.6	232.2	217.2	117.3	115.5	172.1	172.1	September "
ጥቅምት 2001	213.9	245.3	170.4	256.1	150.7	173.8	196.0	153.8	339.3	232.2	220.1	117.3	115.5	176.0	176.0	October "
ኅዳር 2001	207.3	234.4	163.7	252.1	138.9	171.7	189.0	155.7	326.5	232.2	210.9	121.4	115.5	180.1	180.1	November "
ታህሳስ 2001	198.7	225.3	161.3	249.3	141.1	130.3	186.0	162.1	305.5	217.2	190.6	121.9	133.3	184.1	184.1	December "
ጥር 2001	195.9	217.1	160.8	250.5	136.5	130.6	186.7	165.8	274.4	231.7	190.3	122.2	133.3	184.4	184.4	January 2009
የኮቲት 2001	202.8	217.1	165.2	248.9	135.4	131.3	192.6	169.1	245.7	231.7	229.8	122.2	133.3	177.8	177.8	February "
መገቢት 2001	201.9	217.4	161.1	243.9	139.0	137.5	191.6	165.8	216.7	231.1	229.7	122.2	133.3	178.0	178.0	March "
ግድሥት 2001	202.3	218.7	165.3	240.0	132.2	150.8	184.8	184.7	191.5	222.2	230.7	122.2	133.3	178.1	178.1	April "
ግንቦት 2001	202.6	213.3	169.5	240.1	140.2	154.3	178.5	205.7	178.0	175.6	238.2	123.8	133.3	178.7	178.7	May "
ሰኔ 2001	206.5	219.5	166.4	229.2	148.8	157.3	177.5	211.3	154.4	166.7	251.7	122.2	133.3	188.3	188.3	June "
2002																2009/2010
ሐምሌ 2001	210.4	219.0	170.6	227.2	141.1	155.1	176.9	200.9	167.6	180.0	278.9	124.6	133.3	181.8	181.8	July 2009

ወንጠረኛ 10A:- ጠቅላላ የምግብ ክፍሎች የ ሽግግር ዋጋ መመዘኛ ሊገደዘስ ለሊሮጊያ ክልላዊ መንግሥት
 ታህሳስ 1999 = 100

Table 10b: Consumer Price Index of Total Food and Its Components for the Oromiya Regional State
 December 2006 = 100

ወርና ዓመት	ጠቅላላ ምግብ	እህል	በቤት ውስጥ የተወለዱ የምግብ ዓይነቶች			FOOD TAKEN AT HOME					ክፍት ውጪ የተወለዱ ምግቦች	Month and Year			
			ጥራጥረ	ዳቦና ሌሎች የተዘጋጁ ምግቦች	ሥጋ	ወተት+ ዓይብና እንቁላል	ዘይትና ቅብቶች	እትክልትና ፍራፍራ	ቅመግ ቅመም	ደገትና ሌሎች ሥራሥርቶች			ያልተቆላ ቡናና ሻይ ቅጠል	ሌሎች ምግቦች	የግንብራጫ አገልግሎት
ታህሳስ 1999	100.0	100.0	100.0	100.0	100.0	100.0	100.0	100.0	100.0	100.0	100.0	100.0	100.0	100.0	December 2006
ሐምሌ 1999 - ሰኔ 2000	138.7	137.3	127.0	147.9	119.9	116.4	151.9	147.1	379.6	134.7	121.9	102.5	118.2	122.6	July 2007 - June 2008
ሐምሌ 2000 - ሰኔ 2001	202.0	242.8	175.2	238.0	152.0	155.2	163.5	176.6	314.2	204.1	142.0	161.6	133.9	156.2	July 2008 - June 2009
2000															2008/2009
ሐምሌ 2000	223.8	295.1	183.9	224.9	148.7	142.9	182.5	147.2	477.1	190.4	134.4	133.8	133.6	142.9	July 2008
ክሌሌ 2000	224.8	297.5	177.1	242.0	149.6	143.8	171.5	154.4	478.1	191.1	131.6	145.7	132.3	146.6	August "
መስከረም 2001	226.0	297.2	180.2	243.1	153.0	152.3	180.3	157.3	465.7	186.8	135.4	145.6	133.7	147.8	September "
ጥቅምት 2001	217.9	282.4	181.3	247.3	151.7	154.9	175.3	155.5	399.9	181.8	135.6	142.2	132.1	151.4	October "
ኅዳር 2001	204.1	252.4	178.8	250.2	151.3	153.1	168.9	154.1	356.2	181.7	138.2	149.2	129.7	152.0	November "
ታህሳስ 2001	183.9	212.1	161.5	234.3	149.5	144.4	159.5	152.5	312.1	182.8	139.9	152.5	127.2	151.5	December "
ጥር 2001	188.9	216.5	163.7	236.9	149.6	152.9	157.7	174.4	261.4	208.1	142.4	168.8	129.4	159.3	January 2009
የኮቲት 2001	190.0	215.8	172.2	242.5	152.0	157.5	153.7	180.7	236.6	214.7	145.0	175.4	132.0	159.1	February "
መጋቢት 2001	189.3	210.3	169.2	236.7	151.7	155.2	155.7	205.8	209.1	225.1	150.9	176.9	132.1	163.4	March "
ጊዳር 2001	191.1	210.5	175.7	225.7	156.3	161.9	153.8	208.7	208.3	230.8	152.5	180.4	138.3	166.1	April "
ግንቦት 2001	189.4	208.3	181.5	234.8	156.1	168.5	153.0	211.2	190.9	213.9	149.1	184.9	141.1	165.7	May "
ሰኔ 2001	194.5	215.9	177.0	237.8	154.3	174.9	149.7	216.9	175.0	241.6	149.2	183.7	144.9	168.7	June "
2002															2009/2010
ሐምሌ 2001	192.7	221.1	176.5	239.5	154.6	169.1	149.9	178.7	205.5	193.5	154.6	188.1	144.9	169.7	July 2009

ሠንጠረዥ 11A:- ጠቅላላ የምግብ ክፍሎች የ ሽያጭ ዋጋ መመዘኛ ኢንዱስትሪ ለጸሐፊ ክልል መገንጠያ
 ታህሳስ 1999 = 100

Table 11b: Consumer Price Index of Total Food and Its Components for the SNNP Regional State
 December 2006 = 100

ወርና ዓመት	ጠቅላላ ምግብ	እህል	በቤት ውስጥ የተወለዱ የምግብ ዓይነቶች			FOOD TAKEN AT HOME					ሌሎች ምግቦች	የግንባራ አገልግሎት	ከቤት ውጪ የተወለዱ ምግቦች	Month and Year		
			ጥራጥራ	ዳቦና ሌሎች የተዘጋጁ ምግቦች	ሥጋ	ወተት+ ዓይብና እንቁላል	ዘይትና ቅብቶች	እትክልትና ፍራፍራ	ቅመም	ደገገና ሌሎች ሥራሥርቶች					ያልተቆላ ቡናና ሻይ ቅጠል	
ታህሳስ 1999	100.0	100.0	100.0	100.0	100.0	100.0	100.0	100.0	100.0	100.0	100.0	100.0	100.0	100.0	100.0	December 2006
ሐምሌ 1999 - ሰኔ 2000	131.1	136.1	122.9	126.9	121.5	119.2	143.7	146.8	264.5	117.1	132.2	112.2	106.0	107.1	107.1	July 2007 - June 2008
ሐምሌ 2000 - ሰኔ 2001	189.3	237.2	156.7	220.2	152.6	159.1	167.3	156.8	227.9	173.1	145.0	175.6	121.2	127.3	127.3	July 2008 - June 2009
2000																2008/2009
ሐምሌ 2000	214.7	316.3	148.1	202.8	153.2	141.0	164.5	132.2	349.1	164.3	154.3	148.2	120.2	121.7	121.7	July 2008
ክሌሌ 2000	214.0	311.2	152.3	207.6	156.8	145.1	163.2	137.6	342.5	163.7	157.1	157.0	122.4	121.3	121.3	August "
መስከረም 2001	215.4	309.2	152.2	214.1	162.1	151.7	169.1	142.5	325.0	169.0	159.1	161.2	119.6	123.4	123.4	September "
ጥቅምት 2001	201.6	270.1	151.6	225.1	162.2	152.8	169.6	140.5	285.2	171.3	160.0	160.4	119.9	124.0	124.0	October "
ኅዳር 2001	186.0	232.7	150.7	234.1	153.2	153.3	165.2	134.6	255.8	167.9	148.7	169.9	118.6	124.5	124.5	November "
ታህሳስ 2001	173.5	199.2	158.6	237.0	150.1	153.9	161.7	141.0	225.7	168.6	131.0	173.4	117.5	128.9	128.9	December "
ጥር 2001	173.1	200.6	158.7	220.4	149.0	157.8	160.5	145.6	197.0	169.9	129.6	179.9	116.7	128.4	128.4	January 2009
የኮቲት 2001	174.9	194.8	159.5	218.9	142.6	171.2	161.7	166.8	168.2	180.8	139.5	191.3	123.5	129.8	129.8	February "
መጋቢት 2001	175.4	194.1	162.5	218.7	144.1	166.0	162.0	172.1	167.9	182.8	138.4	191.6	123.2	130.1	130.1	March "
ግድረኛ 2001	180.2	202.7	161.6	215.8	148.1	166.9	184.3	181.8	166.3	184.7	139.6	190.6	121.7	131.2	131.2	April "
ግንቦት 2001	180.2	205.6	160.9	223.1	153.5	175.3	174.4	191.7	125.7	178.0	139.1	193.1	126.0	131.7	131.7	May "
ሰኔ 2001	182.1	209.6	163.3	225.0	156.8	174.2	171.7	195.8	126.8	176.3	143.1	190.2	124.8	132.9	132.9	June "
2002																2009/2010
ሐምሌ 2001	182.6	214.8	163.2	227.5	160.9	176.5	164.0	158.1	136.7	173.9	156.6	191.9	129.4	134.3	134.3	July 2009

ሠንጠረዥ 12b:- ጠቅላላ የምግብ ክፍሎች የ ሽግግር ዋጋ መመዘኛ እንደገቢ ለሰጧል ከሌላዊ መገንጠያ
 ታህሳስ 1999 = 100

Table 12b: Consumer Price Index of Total Food and Its Components for the Somali Regional State
 December 2006 = 100

ወርና ዓመት	ጠቅላላ የምግብ	እህል	በቤት ውስጥ የተወለዱ የምግብ ዓይነቶች			FOOD TAKEN AT HOME					የተወለዱ የምግብ	ክቢት ወ-ወጪ የተወለዱ የምግብ	Month and Year		
			ጥራጥራ	ዳቦና ሌሎች የተዘጋጁ የምግብ	ሥጋ	ወተት+ ዓይብና እንቁላል	ዘይትና ቅብቶች	እትክልትና ፍራፍራ	ቅመግ ቅመም	ደገጎችና ሌሎች ሥራሥርቶች				ያልተቆላ ቡናና ሻይ ቅጠል	ሌሎች የምግብ
ታህሳስ 1999	100.0	100.0	100.0	100.0	100.0	100.0	100.0	100.0	100.0	100.0	100.0	100.0	100.0	100.0	December 2006
ሐምሌ 1999 - ሰኔ 2000	124.6	136.0	124.9	120.3	126.3	103.1	138.8	128.3	299.8	145.0	115.8	102.8	99.2	120.5	July 2007 - June 2008
ሐምሌ 2000 - ሰኔ 2001	195.9	246.5	175.9	207.5	167.3	171.8	175.4	163.7	272.0	220.7	149.0	152.1	110.4	157.8	July 2008 - June 2009
2000															2008/2009
ሐምሌ 2000	198.2	285.6	182.0	189.9	158.7	137.5	184.8	144.9	369.4	276.6	119.1	125.9	106.2	150.9	July 2008
ክሌሌ 2000	208.6	301.8	190.3	200.9	162.2	159.7	186.2	162.7	388.9	221.6	119.3	130.2	104.8	149.6	August "
መስከረም 2001	212.0	300.3	192.3	205.4	163.7	164.4	182.9	165.2	333.3	190.0	126.3	156.5	106.3	151.2	September "
ጥቅምት 2001	202.5	275.9	190.2	211.8	162.1	166.2	178.3	168.0	333.3	195.2	120.3	156.6	110.1	152.1	October "
ኅዳር 2001	193.3	255.1	187.7	210.5	161.2	151.1	178.3	161.5	241.7	206.0	127.6	157.0	108.4	156.4	November "
ታህሳስ 2001	170.6	197.2	163.3	196.3	150.0	154.5	170.5	141.3	250.0	213.9	132.3	156.9	107.7	156.1	December "
ጥር 2001	185.4	217.0	163.9	204.8	168.4	170.2	167.8	159.7	250.0	225.1	158.0	156.7	102.5	149.7	January 2009
የኮቲት 2001	194.0	227.8	166.1	214.3	169.3	180.6	175.2	149.1	250.0	216.5	172.2	157.3	104.4	156.7	February "
መገቢት 2001	191.1	222.5	166.1	218.1	165.0	178.4	170.5	159.5	238.8	232.5	166.5	156.6	116.7	162.4	March "
ግድም 2001	194.6	218.7	169.4	215.7	179.8	204.8	170.8	166.1	225.0	241.6	171.5	157.0	116.7	165.3	April "
ግንቦት 2001	196.3	226.2	167.0	215.7	187.2	192.1	169.2	182.6	208.3	230.7	171.7	157.4	117.0	167.5	May "
ሰኔ 2001	203.8	230.0	172.1	206.0	180.1	201.6	170.3	204.4	175.0	199.1	202.7	157.2	124.3	175.6	June "
2002															2009/2010
ሐምሌ 2001	202.3	238.1	161.6	201.1	179.1	190.8	168.0	184.0	166.7	201.7	190.3	157.8	118.7	176.2	July 2009

ወንጠረኛ 13ሳ፡- ጠቅላላ የምግብ ወጪዎች የሽግግር ዋጋ መመዘኛ ለጎደታክ ለትግራይ ክልል መገንጠያ
 ታህሳስ 1999 = 100

Table 13b: Consumer Price Index of Total Food and Its Components for the Tigray Regional State
 December 2006 = 100

ወርና ዓመት	ጠቅላላ የምግብ	አሀል	በቤት ውስጥ የተወለዱ የምግብ ዓይነቶች			FOOD TAKEN AT HOME							ከቤት ውጪ የተወለዱ የምግቦች	Month and Year	
			ጥራጥራ	ቆይና ሌሎች የተዘጋጁ የምግቦች	ሥጋ	ወተት+ ዓይብና እንቁላል	ዘይትና ቅብቶች	እትክልትና ፍራፍራ	ቅመግ ቅመም	ደገችና ሌሎች ሥራሥሮች	ያልተቆላ ቡናና ሻይ ቅጠል	ሌሎች የምግቦች			የግንቢራዊ አገልግሎት
	Food Total	Cereals	Pulses	Bread and other Prepared Food	Meat	Milk,Cheese and Egg	Oils and Fats	Vegetables and Fruits	Spices	Potatoes, Other Tubers and Stems	Coffee (beans, whole) and Tea Leaves	Other Food Items	Milling Charges	Food taken away from home	
ታህሳስ 1999	100.0	100.0	100.0	100.0	100.0	100.0	100.0	100.0	100.0	100.0	100.0	100.0	100.0	100.0	December 2006
ሐምሌ 1999 - ሰኔ 2000	143.4	138.5	129.3	126.5	122.8	114.8	166.5	122.5	345.0	149.0	127.1	104.2	113.7	124.7	July 2007 - June 2008
ሐምሌ 2000 - ሰኔ 2001	214.8	254.3	180.2	200.9	140.6	158.9	186.5	155.0	287.1	216.1	147.2	156.4	131.2	161.2	July 2008 - June 2009
2001															2008/2009
ሐምሌ 2000	230.2	279.5	169.2	192.0	137.1	146.5	200.2	116.8	422.1	195.2	150.4	130.7	120.7	151.3	July 2008
ክሌሌ 2000	237.7	284.9	179.7	206.0	138.6	150.1	200.0	151.1	447.1	216.3	153.9	149.2	122.8	153.5	August "
መስከረም 2001	244.3	293.5	193.7	198.8	148.1	154.7	202.9	180.7	422.5	211.9	146.7	147.1	124.6	161.7	September "
ጥቅምት 2001	241.1	289.5	202.2	201.6	141.4	161.2	195.2	169.4	410.8	197.4	140.9	140.4	123.9	165.1	October "
ኅዳር 2001	223.4	268.0	190.8	207.8	137.5	162.7	182.6	142.7	336.1	220.3	141.8	141.2	133.0	155.8	November "
ታህሳስ 2001	206.8	241.9	174.6	192.8	136.9	160.8	185.5	135.4	300.4	212.3	142.8	145.3	133.0	158.2	December "
ጥር 2001	200.8	235.7	165.5	191.5	140.3	157.8	179.8	138.6	254.4	203.1	139.9	159.2	125.2	158.8	January 2009
የኮቲት 2001	200.2	235.4	173.7	195.4	139.3	159.7	180.4	150.8	193.1	208.3	148.6	170.3	134.2	164.4	February "
መገቢት 2001	203.3	240.4	183.8	193.1	135.3	159.6	181.2	164.3	174.1	226.0	148.2	170.5	138.3	168.7	March "
ግድሃኒያ 2001	203.7	243.8	178.1	200.8	138.8	160.4	176.3	163.8	158.8	236.6	152.0	169.3	137.2	162.7	April "
ግንቦት 2001	191.6	217.2	177.7	214.4	144.3	161.7	179.2	177.1	161.7	229.5	149.2	176.3	138.8	164.1	May "
ሰኔ 2001	194.3	221.5	173.0	216.1	149.2	171.8	174.9	169.6	163.6	236.6	151.8	177.5	143.1	169.7	June "
2002															2009/2010
ሐምሌ 2001	198.2	226.7	174.5	221.4	149.2	177.4	165.4	167.5	175.2	248.5	148.3	180.6	154.6	178.9	July 2009

General CPI for Country Level and Major Regions

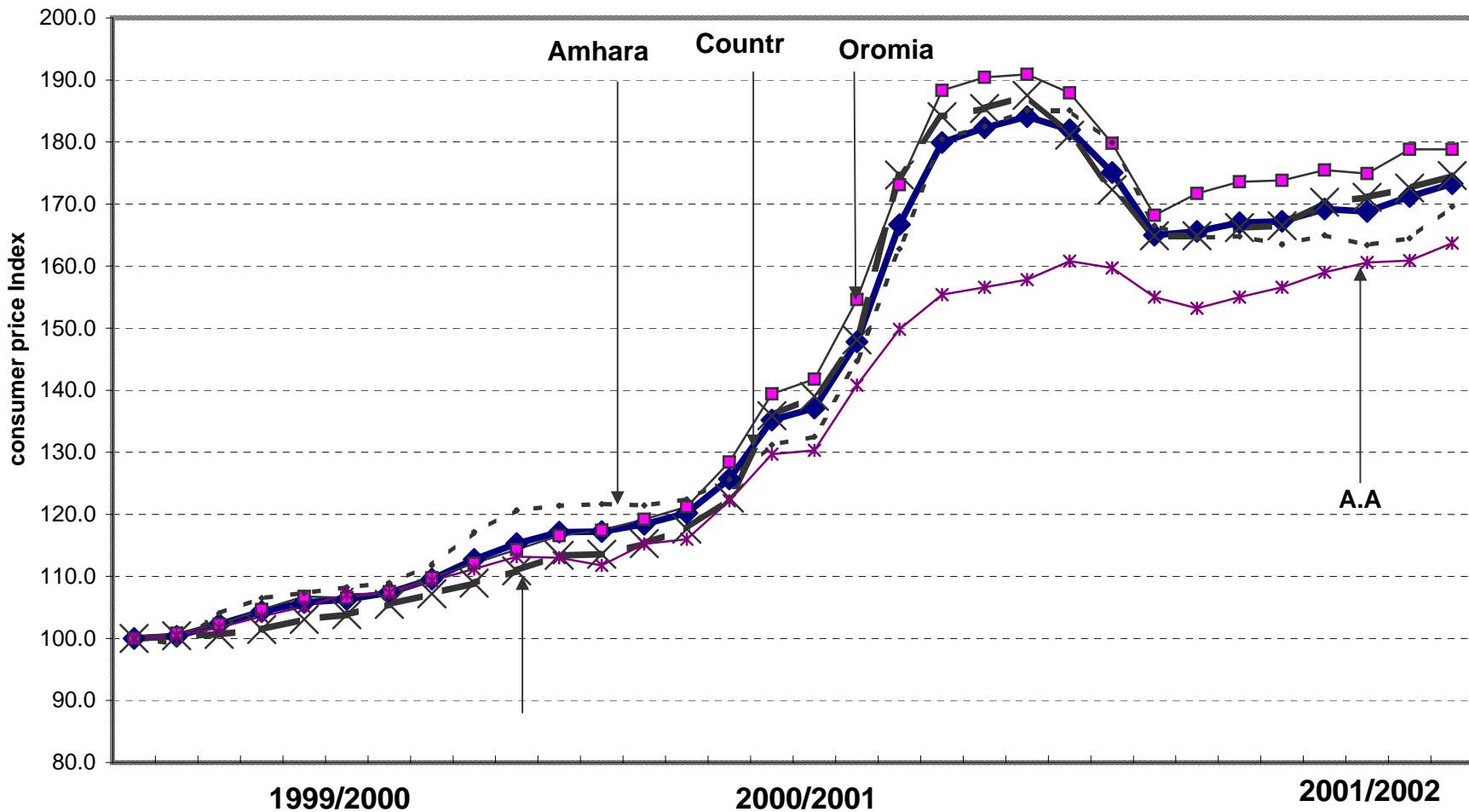
ጠቅላላ የሽያጭ ሰንጠረዥ ለአገር አቀፍና ለዋና ዋና ክልሎች

2007/2008

2008/2009

2009/2010

D J F M A M J J A S O N D J F M A M J J A S O N D J F M A M J J



የሽያጭ ሰንጠረዥ ለአገር አቀፍና ለዋና ዋና ክልሎች

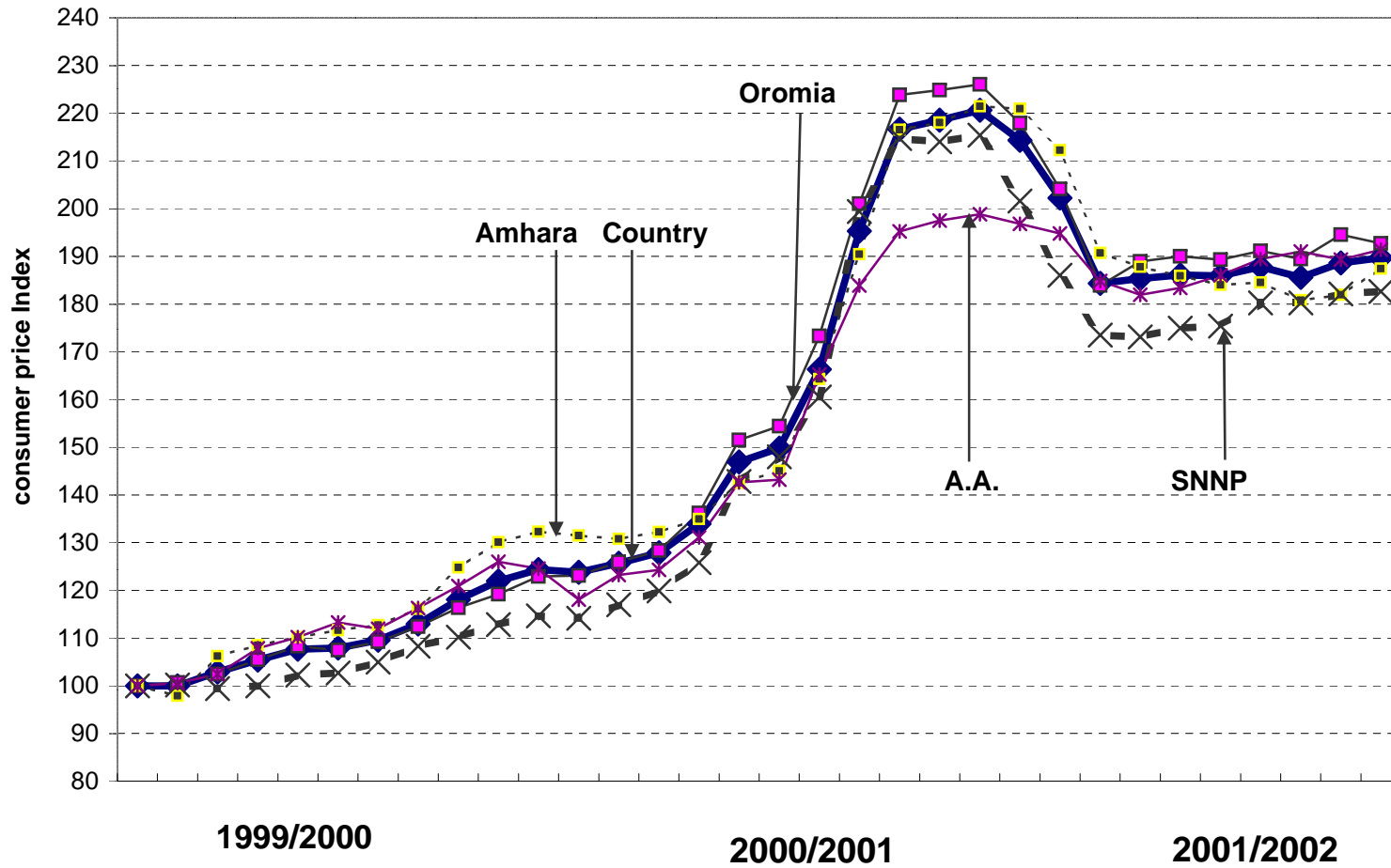
Food CPI for Country Level and Major Regions
 የምግብ የሽያጭ ዋጋ ኢንዱክስ ለአገር አቀፍና ለዋና ዋና ክልሎች

2007/2008

2008/2009

2009/2010

D J F M A M J J A S O N D J F M A M J J A S O N D J F M A M J J



የሽያጭ ዋጋ መመዘኛ ኢንዱክስ