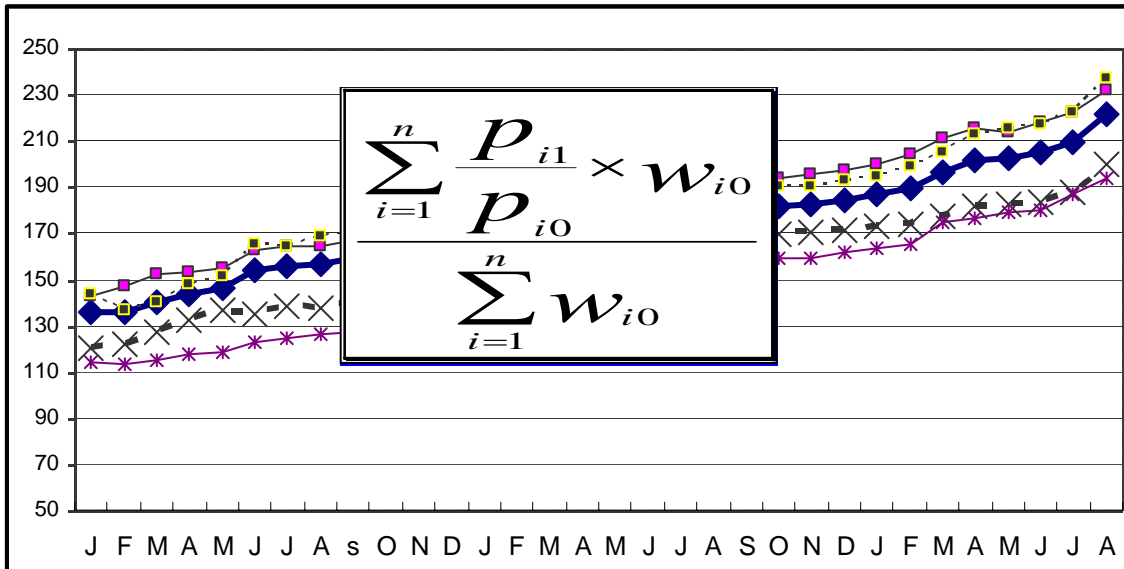


በኢትዮጵያ ፌዴራላዊ ዲሞክራሲያዊ ሪፐብሊክ
 የማዕከላዊ ስታቲስቲክስ ኤጀንሲ

THE FEDERAL DEMOCRATIC REPUBLIC OF ETHIOPIA
 CENTRAL STATISTICAL AGENCY

የአገር አቀፍና የክልሎች የሽማግሌት ዋጋ መመዘኛ ኢንዱክሶች
 የነሐሴ ወር 2001 ዓ.ም.
 [ታህሳስ 1999 = 100]
 መረጃ ቁጥር 23

COUNTRY AND REGIONAL LEVEL CONSUMER PRICE INDICES



[December 2006 = 100]

For the month of August 2009

Information No. 23

አዲስ አበባ

ጳጉሜ 4 ቀን 2001 ዓ.ም.

ADDIS ABABA

09 September 2009

Tel: 251-11-1 553011

Fax: 251-11-1550334.

Email: csa@ethionet.et

CONTENTS

	Page
Introduction.....	4
Inflation Rate.....	8
Comparison of CPI Movements, Current Vs Last Year's Similar Months, at country Level.....	10
Comparison of CPI Movements, Current Vs Last Year's Similar Months, at country and Regional Levels.....	11

List of Tables

Table a: Number of Markets Covered and Basket of Commodities by Region.....	2
Table 1a: General Consumer Price Index and Its Components at Country Level.....	13
Table 1b: Consumer Price Index of Total Food and Its Components at Country Level.....	14
Table 1c: Consumer Price Index of House Rent, Construction Materials, Water, Fuel and Power and Its Components at Country Level.....	15
Table 2a: Summary of General Consumer Price Indices at Country and Regional Levels.....	16
Table 2b: Summary of Consumer Price Indices of Food at Country and Regional Levels.....	18
Table 3a: General Consumer Price Index and Its Components for the City of Addis Ababa Administration.....	20
Table 3b: Consumer Price Index of Total Food and Its Components for the City of Addis Ababa Administration.....	21
Table 4a: General Consumer Price Index and Its Components for the Afar Regional State.....	22
Table 4b: Consumer Price Index of Total Food and Its Components for the Afar Regional State.....	23
Table 5a: General Consumer Price Index and Its	

Components for the Amhara Regional State.....	24
Table 5b: Consumer Price Index of Total Food and Its	
Components for the Amhara Regional State.....	25
Table 6a: General Consumer Price Index and Its	
Components for the Benishangul-Gumuz Regional State.....	26
Table 6b: Consumer Price Index of Total Food and Its	
Components for the Benishangul-Gumuz Regional State.....	27
Table 7a: General Consumer Price Index and Its	
Components for the Dire Dawa Administrative Council.....	28
Table 7b: Consumer Price Index of Total Food and Its	
Components for the Dire Dawa Administrative Council.....	29
Table 8a: General Consumer Price Index and Its	
Components for the Gambela Peoples Regional State.....	30
Table 8b: Consumer Price Index of Total Food and Its	
Components for the Gambela Peoples Regional State.....	31
Table 9a: General Consumer Price Index and Its	
Components for the Harari Peoples Regional State.....	32
Table 9b: Consumer Price Index of Total Food and Its	
Components for the Harari Peoples Regional State.....	33
Table 10a: General Consumer Price Index and Its	
Components for the Oromia Regional State.....	34
Table 10b: Consumer Price Index of Total Food and Its	
Components for the Oromia Regional State.....	35
Table 11a: General Consumer Price Index and Its	
Components for the SNNP Regional State.....	36
Table 11b: Consumer Price Index of Total Food and Its	
Components for the SNNP Regional State.....	37
Table 12a: General Consumer Price Index and Its	
Components for the Somali Regional State.....	38
Table 12b: Consumer Price Index of Total Food and Its	
Components for the Somali Regional State.....	39
Table 13a: General Consumer Price Index and Its	
Components for the Tigray Regional State.....	40
Table 13b: Consumer Price Index of Total Food and Its	
Components for the Tigray Regional State.....	41

Introduction

The Consumer Price Index (CPI) measures the average change in the price paid by consumers for a fixed market basket of goods and services. It is usually based on household expenditure weights of the goods and services in the basket and their current market prices. The twelve CPI's (i.e., the CPI's of the 11 Regions and the CPI at Country Level) presented in this report are based on the results of the Household Income, Consumption and Expenditure Survey (HICES) conducted by the Central Statistical Agency in 2004/2005 from which expenditure weights are derived for major household goods and services of that period and adjusted using the December 2006 retail prices of the goods and services as a base period.

The December 2006 based CPI updates the previous CPI series (i.e. December 2000 based) and the newly selected baskets are more diversified and the weights are more accurate. It also showed various improvements and incorporates non-food index as an independent group. The new series is constructed for country as a whole and Regional States including Dire Dawa and the Addis Ababa City Administration. However, similar indices had been utilized at Addis Ababa Level since 1963 and at Country, Urban and Rural Levels since 1995/96 and in Country and Regional level since 2000.

All the twelve general indices are divided into two major groups that is food and non-food index. The non-food index has ten major groups each, namely: Beverages; Cigarettes and Tobacco; Clothing and Footwear; House Rent, Construction Materials, Water, and Fuel and Power; Furniture, Furnishing, Household Equipment and Operation; Medical Care and Health; Transport and Communication; Recreation, Entertainment and Education; Personal Care and Effects; and Miscellaneous Goods and Services. On the other hand, the Food Index has 13 sub-groups. These are: Cereals; Pulses; Bread and Other Prepared Food; Meat; Milk, Cheese and Eggs; Vegetables and

Fruits; Oil and Fats Spices; Potatoes, Other Tubers and Stems; Coffee Beans (whole) and Tea Leaves; Other Food Items; Milling Charges; and Food taken Away from Home. Furthermore, the new CPI based on December 2006 includes more detailed #Housing, Construction materials, Water and Fuel and Power; components.

For the construction of the current consumer price indices, up to date data on retail prices are collected in the purposely selected sample market places located in representative urban centers in each zone/special weredas of the country. Hence, a total of 119 market places were selected for the retail price survey. In each market place an enumerator is assigned to undertaking the data collection activities. The price data is collected from the 1st day through 15th days of European Calendar month under consideration. To calculate the monthly regional consumer price indices, geometric means of prices of the specific regions are used. The distribution of the market place of each region and items included in the basket of commodities are given on Table A on page 2.

An important factor in constructing a Consumer Price Index is to select the representative basket of goods and services. Including all consumption items into the market basket of goods and services is both cumbersome and unnecessarily costly in term of data collection and processing. Furthermore, it doesn't make sense to include an insignificant weight into an index basket which could not move the price relative up or downwards compared to the general market trend. As a result, basket of goods and services included in the regional baskets are determined by expenditure cut-off point. The total numbers of items included in the regional basket in the December 2006 based indices are given in Table A on page 2.

Country level CPI aggregates the regional group indices and the contributions of the five relatively big regions in terms of the magnitude of the expenditure account for more than 95 percent. These regions are Oromiya, Amhara, SNNP, Addis Ababa and Tigray. On the other hand, the contributions of the remaining regions to the

Country Level Consumer Price Index is about five percent.

According to the weights for food and non-food groups in Table B below, the December 2006 based CPI is about 57 percent of household expenditure spent on the food component, which declined by 3 percentage points as compared to the December 2000 based CPI. On the other hand, the expenditure on non-food components increased from 40 percent to 43 percent. This indicates that the economic situation in the country is going in the right direction as postulated by economic theory. Similarly, in this period larger regions resulted in a substantial decrease in the average weights for food, despite the increased food taken out of home. It was offset mainly by an increase in housing, construction materials, water and fuel and power, furnishing and transport and communication.

Table B: Major groups in the 2000 and 2006 based CPI and their weights at Country Level

No.	Major Group	Weights	
		2000 based CPI	2006 based CPI
1	Food	0.6008	0.5701
2	Non-Food	0.3992	0.4299
3	Beverages	0.0201	0.0202
4	Cigarettes and Tobacco	0.0051	0.0048
5	Clothing and Footwear	0.0926	0.0832
6	House Rent, Construction Materials, Water and Fuel and Power	0.1544	0.2056
7	Furniture, Furnishing, Household Equipment and Operation	0.0494	0.0375
8	Medical Care and Health	0.0120	0.0111
9	Transport and Communication	0.0199	0.0249
10	Recreation, Entertainment and Education	0.0101	0.0109
11	Personal Care and Effects	0.0092	0.0083
12	Miscellaneous Goods	0.0264	0.0234
	Total	1.000	1.000

መግቢያ..... 1
የወሩ ዋጋ ግሽበት ሁኔታ 7

የዘንድሮውና የአምናው ተመሳሳይ ወሮች የሽማቾች ዋጋ መመዘኛ ጠቋሚ አሀዝ ንፅፅር በአገር አቀፍ ደረጃ 10

የዘንድሮውና የአምናው ተመሳሳይ ወሮች የሽማቾች ዋጋ መመዘኛ ጠቋሚ አሀዝ ንፅፅር በአገር አቀፍና በክልሎች ደረጃ..... 11

የሠንጠረዦች ዝርዝር

ሠንጠረዥ ሀ: በጥናቱ የተሸፈኑ ገበያዎችና በኢንዱስትሪ ማዕቀፍ የተካተቱ ዕቃዎችና በዕቃዎች/አገልግሎቶች ብዛት በክልል..... 2

ሠንጠረዥ 1ሀ: ጠቅላላ የሽማቾች ዋጋ መመዘኛ ኤንዱስትሪና በስሩ የተካተቱ ክፍሎች በአገር አቀፍ ደረጃ..... 13

ሠንጠረዥ 1ለ: ጠቅላላ ምግብና የምግብ ክፍሎች የሽማቾች ዋጋ መመዘኛ ኤንዱስትሪ በአገር አቀፍ ደረጃ..... 14

ሠንጠረዥ 1ሐ: አገር አቀፍ የቤት ኪራይ፣ የቤት መስሪያ ዕቃዎች፣ ውሃና ኬነርጂ የሽማቾች ዋጋ መመዘኛ ኤንዱስትሪ 15

ሠንጠረዥ 2ሀ: ጠቅላላ የሽማቾች ዋጋ መመዘኛ ኤንዱስትሪ በአገር አቀፍና በክልሎች ደረጃ 16

ሠንጠረዥ 2ለ: የምግብ ዋጋ መመዘኛ ኤንዱስትሪ ማጠቃለያ በአገር አቀፍ እና በክልሎች ደረጃ 18

ሠንጠረዥ 3ሀ: ጠቅላላ የሽማቾች ዋጋ መመዘኛ ኤንዱስትሪና በስሩ የተካተቱ ክፍሎች ለአዲስ አበባ ከተማ መስተዳድር 20

ሠንጠረዥ 3ለ: ጠቅላላ ምግብና የምግብ ክፍሎች የሽማቾች ዋጋ መመዘኛ ኤንዱስትሪ ለአዲስ አበባ ከተማ መስተዳድር 21

ሠንጠረዥ 4ሀ: ጠቅላላ የሽማቾች ዋጋ መመዘኛ ኤንዱስትሪና በስሩ የተካተቱ ክፍሎች ለአፋር ክልላዊ መንግስት..... 22

ሠንጠረዥ 4ለ: ጠቅላላ ምግብና የምግብ ክፍሎች የሽማቾች ዋጋ መመዘኛ ኤንዱስትሪ ለአፋር ክልላዊ መንግስት..... 23

ሠንጠረዥ 5ሀ: ጠቅላላ የሽማቾች ዋጋ መመዘኛ ኤንዱስትሪና በስሩ የተካተቱ ክፍሎች ለአማራ ክልላዊ መንግስት..... 24

ሠንጠረዥ 5ለ: ጠቅላላ ምግብና የምግብ ክፍሎች የሽማቾች ዋጋ መመዘኛ ኤንዱስትሪ ለአማራ ክልላዊ መንግስት..... 25

ሠንጠረዥ 6ሀ: ጠቅላላ የሽማቾች ዋጋ መመዘኛ ኤንዱስትሪና በስሩ የተካተቱ ክፍሎች ለቤንሻንጉል-ጉሙዝ ክልላዊ መንግስት..... 26

ሠንጠረዥ 6ለ: ጠቅላላ ምግብና የምግብ ክፍሎች የሽማቾች ዋጋ መመዘኛ ለቤንሻንጉል-ጉሙዝ ክልላዊ መንግስት..... 27

<p>ሠንጠረዥ 7ሀ: ጠቅላላ የሸማቾች ዋጋ መመዘኛ ኤንደክስና በስሩ የተካተቱ ክፍሎች ለድሬደዋ አስተዳደር ካውንስል</p>	28
<p>ሠንጠረዥ 7ለ: ጠቅላላ ምግብና የምግብ ክፍሎች የሸማቾች ዋጋ መመዘኛ ለድሬደዋ አስተዳደር ካውንስል</p>	29
<p>ሠንጠረዥ 8ሀ: ጠቅላላ የሸማቾች ዋጋ መመዘኛ ኤንደክስና በስሩ የተካተቱ ክፍሎች ለጋምቤላ ህዝቦች ክልላዊ መንግስት</p>	30
<p>ሠንጠረዥ 8ለ: ጠቅላላ ምግብና የምግብ ክፍሎች የሸማቾች ዋጋ መመዘኛ ለጋምቤላ ህዝቦች ክልላዊ መንግስት</p>	31
<p>ሠንጠረዥ 9ሀ: ጠቅላላ የሸማቾች ዋጋ መመዘኛ ኤንደክስና በስሩ የተካተቱ ክፍሎች ለለሐረሪ ህዝብ ክልላዊ መንግስት</p>	32
<p>ሠንጠረዥ 9ለ: ጠቅላላ ምግብና የምግብ ክፍሎች የሸማቾች ዋጋ መመዘኛ ኤንደክስ ለለሐረሪ ህዝብ ክልላዊ መንግስት</p>	33
<p>ሠንጠረዥ 10ሀ: ጠቅላላ የሸማቾች ዋጋ መመዘኛ ኤንደክስና በስሩ የተካተቱ ክፍሎች ለአሮሚያ ክልላዊ መንግስት</p>	34
<p>ሠንጠረዥ 10ለ: ጠቅላላ ምግብና የምግብ ክፍሎች የሸማቾች ዋጋ መመዘኛ ኤንደክስ ለአሮሚያ ክልላዊ መንግስት</p>	35
<p>ሠንጠረዥ 11ሀ: ጠቅላላ የሸማቾች ዋጋ መመዘኛ ኤንደክስና በስሩ የተካተቱ ክፍሎች ለደ.ኢ.ብ.ብ.ሀ ክልላዊ መንግስት</p>	36
<p>ሠንጠረዥ 11ለ: ጠቅላላ ምግብና የምግብ ክፍሎች የሸማቾች ዋጋ መመዘኛ ኤንደክስ ለደ.ኢ.ብ.ብ.ሀ ክልላዊ መንግስት</p>	37
<p>ሠንጠረዥ 12ሀ: ጠቅላላ የሸማቾች ዋጋ መመዘኛ ኤንደክስና በስሩ የተካተቱ ክፍሎች ለሶማሌ ክልላዊ መንግስት</p>	38
<p>ሠንጠረዥ 12ለ: ጠቅላላ ምግብና የምግብ ክፍሎች የሸማቾች ዋጋ መመዘኛ ኤንደክስ ለሶማሌ ክልላዊ መንግስት</p>	39
<p>ሠንጠረዥ 13ሀ: ጠቅላላ የሸማቾች ዋጋ መመዘኛ ኤንደክስና በስሩ የተካተቱ ክፍሎች ለትግራይ ክልላዊ መንግስት</p>	38
<p>ሠንጠረዥ 13ለ: ጠቅላላ ምግብና የምግብ ክፍሎች የሸማቾች ዋጋ መመዘኛ</p>	41

መግቢያ

የሽማግሌት ዋጋ መመዘኛ ኢንዱክሽን ማለት ሽማግሌት ለተወሰኑ ዕቃዎችና አገልግሎቶች የከፈሉትን አማካይ የዋጋ ለውጥ ለመለካት የሚያገለግል ጠቋሚ አህዝ ነው። የዋጋ መመዘኛ ኢንዱክሽን አብዛኛውን ጊዜ መሠረት የሚያደርገው የቤተሰብ ገቢ፣ ፍጆታና ወጪ ጥናት ወጤት በሆነው ቤተሰቦች በዕቃዎችና ግልጋሎቶች ላይ ባወጡት የመቶኛ ድርሻ መጠንና የወቅቱ የገበያ ዋጋ ላይ ነው። በዚህ ሪፖርት ውስጥ የተካተቱት 12 ኢንዱክሶች (የ11 ክልሎችና የአገር አቀፍ) መሠረት ያደረጉት የማዕከላዊ ስታቲስቲክስ ኤጀንሲ በ1996/97 በጀት ዓመት በመላ አገሪቱ በናሙና በተመረጡ ቦታዎች ያካሄደውን የቤተሰብ ገቢ፣ ፍጆታና ወጪ ጥናት ወጤት ነው።

ይህ ታህሳስ ወር 1999 ዓ.ምን መሠረት ያደረገው (ታህሳስ 1999=100) የሽማግሌት ዋጋ መመዘኛ ኢንዱክሽን በክልል ደረጃ ሲዘጋጅ በዓይነቱ ለሁለተኛ ጊዜ የተዘጋጀ ሲሆን በታህሣሥ 1993 ዓ.ም. መሠረት ያደረገውን የሽማግሌት መመዘኛ ኢንዱክሽን የሚተካ ነው። በአገር አቀፍ ደረጃ ከ1988 ጀምሮና በአዲስ አበባ ከተማ ደረጃ ደግሞ ከ1955 ዓ.ም ጀምሮ በየወሩ ተመሳሳይ ኢንዱክሶች እየተዘጋጁ ለተጠቃሚዎች ሲሰራጩ መቆየታቸው ይታወቃል። እነዚህ 12 የዋጋ መመዘኛ ኢንዱክሶች በአገሪቱ የሚገኙ 11 ክልሎችና የአገር አቀፍን ሪፖርት ጨምሮ የሚሸፍነው የዕቃዎችና የአገልግሎቶችን ክምችት በያዙ ሁለት ዋና ክፍሎች የተከፈሉ ናቸው። እነሱም፡- የምግብና ምግብ ነክ ያልሆኑ መመዘኛ ኢንዱክሶች ሲሆን ምግብ ነክ ያልሆኑ መመዘኛ ኢንዱክሽን እንደገና በ10 ንዑስ ክፍሎች ይከፈላል። እነዚህም መጠጥ፣ ሲጃራና ትምባሆ፣ ልብስና መጫሚያ፣ የቤት ኪራይ፣ የቤት መሥሪያ ዕቃዎች፣ ወሃና ኢነርጂ፣ የቤት ዕቃዎች፣ የቤት ማስገጫዎች፣ የቤት ቁሳቁስና የቤት ሠራተኛ ደመወዝ፣ ሕክምና፣ መንገዥና መገናኛ፣ መዝናኛና ትምህርት፣ የግል ንጽህናና የግል ቋሚ ዕቃዎች እንዲሁም ሌሎች ዕቃዎችና አገልግሎቶች ሲሆኑ የሁሉም ክፍሎች አጠቃላይ ወጤት የሚሆነው ደግሞ የጠቅላላ ዋጋዎች መመዘኛ ኢንዱክሽን ነው።

በሁሉም ክልሎች የጠቅላላ ዋጋ መመዘኛ ኢንዱክሶች ስሌት አብዛኛውን የመቶኛ ወጪ ድርሻ የሚይዘው የምግብ መመዘኛ ኢንዱክሽን ሲሆን በሁሉም የምግብ ዋጋ መመዘኛ ኢንዱክሶች ዋና ዋና ክፍሎች እህል፣ ጥራጥሬ፣ ዳቦና ሌሎች የተዘጋጁ ምግቦች፣ ሥጋ፣ ወተት፣ ዐይብና ዕንቁላል፣ ዘይትና ቅባቶች፣ አትክልትና ፍራፍሬ፣ ቅመማ ቅመም፣ ድንችና ሌሎች ሥራሥሮች፣ ያልተቆላ ቡናና ሻይ ቅጠል፣ ሌሎች ምግቦች፣ የማስፈጫ አገልግሎትና ከቤት ወጪ የተወሰዱ ምግቦች ናቸው።

ለዋጋ ኢንዱክሶቹ የተመረጡት ዕቃዎችና አገልግሎቶች የዋጋ መረጃ የሚሰበሰበው በየዞን/ በየልዩ ወረዳ በናሙና በተመረጡ ወካይ ከተሞች ውስጥ ባሉ የገበያ ቦታዎች ነው። በመሆኑም ከእያንዳንዱ ዞን ሁለት ከተሞች (የገበያ ቦታዎች) የተመረጡ ሲሆን እንደዚሁም በእያንዳንዱ ልዩ ወረዳ አንድ ከተማ (የገበያ ቦታ) በጥናቱ እንዲካተት ተደርጓል።

በእነዚህ ከተሞች ውስጥ ተመድበው ለሚሰሩ መረጃ ሰብሳቢዎች በየበጀት ዓመቱ መጨረሻ በመረጃ አሰባሰብ ዘዴው ላይ ስልጠና የሚሰጥ ሲሆን ለአሰባሰቡ የሚረዱ የመስክ መገልገያ መሣሪያዎች (ሚዛን፣ ሜተር ... ወዘተ) ይሰጣቸዋል። እነዚህ መሣሪያዎችን በመጠቀም በየወሩ የዋጋ መረጃዎችን ከነጋዴዎች ይሰበስባሉ። አንዳንድ ጊዜም አንድ በላተኛ ወይም ገዢ ከነጋዴ ሲገዛ ቢገኝና ለሥራው ተባባሪነቱን ካሳየ መረጃው ከርሱም ይሰበስባል። የችርቻሮ ዋጋ መረጃ የሚሰበሰበው እንደ አውሮፓውያን ዘመን አቆጣጠር ወሩ በገባ ከ1ኛው ቀን አንስቶ አስከ 15ኛው ቀን ነው። የክልል ኢንዱስትሪ ለማስላት ለኢንዱስትሪ ለተመረጡት ዕቃዎችና አገልግሎቶች አማካይ የችርቻሮ ዋጋቸውን የጂኦሜትሪክ ሚን ዘዴ ጥቅም ላይ ውሎአል። የኢንዱስትሪ ሪፖርቱም በየወሩ ለተጠቃሚዎች በዚህ መልክ ይቀርባል።

የአገር አቀፍ የችርቻሮ ዋጋ መመዘኛ ኢንዱስትሪ የሚሰላው እያንዳንዱ ክልል ለአገር አቀፍ የቤተሰብ ወጪ ያለውን የመቶኛ ድርሻ መሠረት በማድረግ ነው። በመሆኑም ለአገር አቀፍ ኢንዱስትሪ ስሌት ከ95 በመቶ በላይ አስተዋጽኦ የሚያደርጉ ክልሎች በቅደም ተከተል ኦሮሚያ፣ አማራ፣ የደቡብ ብሔር ብሔረሰቦችና ሕዝቦች፣ አዲስ አበባና ትግራይ ሲሆኑ የተቀሩት ክልሎች በየወሩ ለሚታየው አገር አቀፍ የችርቻሮ ዋጋ መመዘኛ ኢንዱስትሪ ስሌት የሚኖራቸው አስተዋጽኦ ከአምስት በመቶ የማይበልጥ ነው።

ለችርቻሮ ዋጋ ጥናት በአጠቃላይ 119 የገበያ ቦታዎች የተመረጡ ሲሆን በእያንዳንዱ ክልል የተመረጡ የናሙና ገበያዎች ብዛትና በየኢንዱስትሪዎቻቸው ማዕቀፍ የተካተቱ ዕቃዎች/አገልግሎቶች ብዛት ከዚህ በታች ቀርቦአል።

ሠንጠረዥ ሀ: በጥናቱ የተሸፈኑ ገበያዎችና በኢንዱስትሪ ማዕቀፍ የተካተቱ ዕቃዎች/አገልግሎቶች ብዛት በክልል

Table A: Number of Markets Covered and Basket of Commodities by Region

ተራ ቁጥር	ክልል	የገበያ ቦታዎች ብዛት	በኢንዱስትሪ የተካተቱ ዕቃዎች/አገልግሎቶች ብዛት		Region
			ታህሳስ 1993=100	ታህሳስ 1999=100	
1	ትግራይ	8	114	143	Tigray
2	አፋር	4	85	153	Afar
3	አማራ	20	118	144	Amhara
4	ኦሮሚያ	24	127	161	Oromia
5	ሶማሌ	6	85	122	Somalie
6	ቤኒሻንጉል	6	111	142	Benishangul-Gumuz
7	ጊ.ቤ.ቤ.ሀ	31	130	152	SNNP
8	ጋምቤላ	3	105	103	Gambela
9	ሐረሪ	2	102	158	Harari
10	አዲስ አበባ ከተማ	12	175	193	Addis Ababa City Administration
11	ድራዳዋ አስተዳደር ድምር	3	121	150	Dire Dawa Administrative
		119			Total
Sr.No.		Number of Markets	Basket of Commodities		

ለጠቋሚ አሀዙ ክንዋኔ ዋናው ነገር በጠቋሚ አሀዙ ማዕቀፍ ተካትተው በዋናነት የሚያገለግሉ ዕቃዎችና አገልግሎቶች የመምረጥ ጉዳይ ነው። ጠቋሚ አሀዞች የሚመሠረቱት በአጠቃላይ በናሙና በሚመረጡ ዕቃዎች ላይ ሲሆን በጠቋሚ አሀዙ ማዕቀፍ ውስጥ መካተት የሚገባው ዕቃ መወሰን ግን ሁሌም ቀላል የሚባል ተግባር አይደለም። የተለያየ የአመራረጥ ዘዴ መጠቀም ቢቻልም የሚመረጡት ዕቃዎች ለረጅም ጊዜ የሚኖራቸው ተፈላጊነት፣ በአስተማማኝ ሁኔታ በገበያ ላይ የመገኘታቸው ጉዳይ፣ ሌሎችን ዕቃዎች የመወከል ብቃትና ከሌሎች ምርቶች ጋር ያላቸው ተወዳዳሪነት መሠረት ያደረገ እንዲሆን ይፈለጋል። በአጠቃላይ የተመረጡት ዕቃዎች በበቂ መጠን የመገኘታቸው ሁኔታ፣ በየወቅቱ ተወዳዳሪነታቸውና ዕቃዎችና አገልግሎቶች ምድቡን የመወከላቸው ብቃትን ማረጋገጥ ያስፈልጋል።

ታህሳስ 1999 ዓ.ም. መሠረት ያደረገው የሸማቾች ዋጋ መመዘኛ ኢንዱክስ አይነቶችና እያንዳንዱ ዋና ክፍል ያለው የወጪ ድርሻ በገፅ 6 ላይ ይታያል። ይህ ሠንጠረዥ እንደሚያሳየው የምግብ የመቶኛ የወጪ ድርሻ ታህሳስ 1993 ዓ.ም. ከነበረው 60 በመቶ ወደ 57 በመቶ ቀንሷል። በአንጻሩ ደግሞ ምግብ ነክ ያልሆነ መመዘኛ ኢንዱክስ ታህሳስ 1993 ዓ.ም. ከነበረው 40 በመቶ የወጪ ድርሻ ወደ 43 በመቶ ከፍ ብሏል። ባጠቃላይ ሲታይ በሁሉም ክልሎች ኢንዱክስ ላይ የምግብ የወጪ ድርሻ የማይናቅ ቅናሽ ያሳየ ሲሆን ምግብ ነክ ያልሆኑ የወጪ ድርሻ መጠነኛ እድገት አሳይታል።

የነሐሴ ወር 2001 ዓ.ም. የዋጋ ግሽበት ሁኔታ

ከሠንጠረዥ ቁጥር 1 መረዳት እንደሚቻለው በነሐሴ ወር 2001 ዓ.ም. የተመዘገበው አገራዊ አጠቃላይ የዋጋ ግሽበት 24.1 በመቶ ሲሆን ይህ አሁን በነሐሴ 2000 ከታየው 33.6 በመቶ አጠቃላይ የዋጋ ግሽበት ጋር ሲነፃፀር በ9.5 ከመቶ ቅናሽ አሳይቷል። በተመሳሳይ ሁኔታ በነሐሴ ወር 2001 ዓ.ም. የተመዘገበው አገራዊ የምግብ የዋጋ ግሽበት 25.4 በመቶ ሲሆን አገራዊ ምግብ ነክ ያልሆኑ የዋጋ ግሽበት ደግሞ 21.8 በመቶ ሆኗል። በነሐሴ ወር 2001 ዓ.ም. የተመዘገበው 25.4 በመቶ የምግብ የዋጋ ግሽበት ከነሐሴ 2000 ዓ.ም ከታየው 46.9 ጋር ሲነፃፀር በ21.5 ከመቶ ቅናሽ አሳይቷል። ለዚህም አገራዊ የምግብ የዋጋ ግሽበት መቀነስ ምክንያት የሆኑት የተለያዩ የምግብ ክፍሎች ማለትም በእህል፣ በጥሬ-ጥሬ፣ በዘይትና ቅባቶች እና በቅመማ ቅመም የዋጋ ኢንዱስትሪ ላይ ቅናሽ በመከሰቱ ነው።

የ12 ወራት የምግብና የአጠቃላይ ተንቀሳቃሽ አማካይ የዋጋ ግሽበት ከመጋቢት ወር 2001 ዓ.ም ጀምሮ በተከታታይ ቅናሽ በማሳየት ላይ ይገኛል። ይኸውም በየካቲት ወር 2001 ዓ.ም አጠቃላይ ተንቀሳቃሽ የዋጋ ግሽበቱ 46.1 የነበረ ሲሆን በመጋቢት ወር 2001 ዓ.ም 45.2፣ በሚያዝያ ወር 2001 ዓ.ም በ44.3፣ በግንቦት ወር 2001 ዓ.ም በ41.6 በመቶ፣ በሰኔ ወር በ36.4 በመቶ፣ በሐምሌ ወር በ29.9 እና በነሐሴ ወር 2001 ዓ.ም በ24.1 በመቶ ዝቅ ብሎአል። በተመሳሳይ ሁኔታ የምግብ ተንቀሳቃሽ አማካይ የዋጋ ግሽበትም በየካቲት ወር 2001 ዓ.ም ከነበረበት 61.1 በመቶ በመጋቢት ወር 2001 ዓ.ም ወደ 59.2 በመቶ፣ በሚያዝያ ወር በ57.2 በመቶ፣ በግንቦት ወር በ52.6 በመቶ፣ በሰኔ ወር በ44.2 በመቶ፣ በሐምሌ ወር በ34.2 በመቶ እና በነሐሴ ወር 2001 ዓ.ም በ25.4 በመቶ ዝቅ ማለቱ ተረጋግጦአል። የነሐሴ ወር 2001 ዓ.ም ምግብ ነክ ያልሆኑ የዋጋ ግሽበት ከነሐሴ ወር 2000 ዓ.ም ጋር ሲነፃፀር በ6.4 በመቶ ከፍ ብሎአል። ከቅርብ ወራት ጀምሮ ከምግብ ክፍሎች እህል፣ ዳቦና የተዘጋጁ ምግቦች፣ ቅመማ ቅመም፣ ቡናና ሻይ ቅጠል እና ስኳር ዋጋ ጭማሪ በማስመዘገብ ላይ የሚገኙ ሲሆን በተመሳሳይ ሁኔታ ምግብ ነክ ያልሆኑ የኢንዱስትሪ ክፍሎች ውስጥ ነዳጅ፣ የኮንስትራክሽን ዕቃዎች፣ ልብስና መጫሚያ፣ የቤት ዕቃዎችና የቤት ማስገጫዎች እና የግል ንጽህና ዕቃዎች ዋጋ ጨምሮአል። በቅርቡ የታየው የዋጋ ጭማሪ ግን ባለፈው ዓመት ከታየው ጭማሪ ጋር ሲነፃፀር የአሁኑ በጣም መቀነሱን ጠቋሚ አሃዙ ያመለክታል።

ሠንጠረዥ (መ) የሚያሳየው የዋጋ ግሽበት ሁኔታ ካለፈው ዓመት ተመሳሳይ ወር ጋር በማነፃፀር ነው። ከሠንጠረዥ መረዳት እንደሚቻለው የነሐሴ ወር 2001 ዓ.ም አጠቃላይ የዋጋ ግሽበት ካለፈው ዓመት ነሐሴ ወር 2000 ዓ.ም ጋር ሲነፃፀር በ3.9 ከመቶ ዝቅ ብሎአል። ለዚህ ምክንያቱ በነሐሴ ወር 2001 ዓ.ም የተመዘገበው አጠቃላይ የዋጋ መመዘኛ ኢንዱስትሪ 175.1 ከመቶ በነሐሴ ወር 2000 ከተመዘገበው 182.3 ከመቶ አጠቃላይ የዋጋ መመዘኛ ኢንዱስትሪ አንሶ በመገኘቱ ነው። ለአጠቃላይ ዋጋ ግሽበቱ መቀነስ ዋናው ምክንያት በምግብ ክፍሎች በተለይም በእህል ዋጋ ላይ ካለፈው ዓመት ነሐሴ ወር ጋር ሲነፃፀር የታየው ቅናሽ ነው። በተመሳሳይ ሁኔታ የምግብ ዋጋ ግሽበትም የነሐሴ ወር 2001 ዓ.ም ካለፈው ዓመት ነሐሴ ወር 2000 ዓ.ም ጋር ሲነፃፀር በ12.8 ከመቶ ቅናሽ አሳይቶአል። ለዚህ ቅናሽ ምክንያቱ በነሐሴ ወር 2001 ዓ.ም የተመዘገበው የምግብ ዋጋ መመዘኛ ኢንዱስትሪ 190.5 ከመቶ በነሐሴ ወር 2000 ዓ.ም ከተመዘገበው 218.5 ከመቶ የምግብ ዋጋ መመዘኛ ኢንዱስትሪ አንሶ በመገኘቱ ነው። ሆኖም ምግብ ነክ ያልሆኑ የኢንዱስትሪ ክፍሎች የዋጋ ግሽበት የነሐሴ ወር 2001 ዓ.ም ካለፈው ዓመት ነሐሴ ወር 2000 ዓ.ም ጋር ሲነፃፀር የ15.3 በመቶ ጭማሪ አሳይቷል።

August 2009 Inflation Rate

As it is indicated in Table 'C' below the country level overall inflation rate (annual change based on 12 months Moving Average) stood at 24.1 percent in August 2009. This rate is 9.5 percentage points lower than the corresponding annual average rate of 33.6 percent at August 2008. Similarly, the country level food inflation rate stood at 25.4 percent and the country level Non-food inflation rate stood at 21.8 percent in August 2009. The 25.4 percent Country level food inflation rate in August 2009 is 21.5 percentage points lower than that of 46.9 percent inflation rate at August 2008. This decrease in the Food inflation rate was due to the decline in price indices of the Food components like Cereals, Pulses, Oils and Fats and Spices.

The 12 months moving average General and Food inflation showed a decline starting in March 2009 and continued the trend in August 2009. In this regard the General moving average inflation rate was 46.1 in February 2009 and consequently declined to 45.2 percent in March 2009, 44.3 in April 2009, 41.6 in May 2009, 36.4 in June 2009, 29.9 in July 2009 and 24.1 in August 2009. In a similar way the Food moving average inflation rate was declined from 61.1 percent in February 2009 to 59.2 percent in March 2009, 57.2 percent in April 2009, 52.6 percent in May 2009, 44.2 in June 2009, 34.2 in July 2009 and 25.4 in August 2009. The Moving Average Inflation rate of Non-food components has increased by 6.4 percentage points as compared to the one observed August 2009. In the recent few months, among the food components, the prices of Cereals, Bread and other prepared foods, Spices, coffee and Tea leaves and Sugar are on the rise. Among the non-food components, the prices of Fuel, Construction materials, clothing and footwear, Furniture and furnishing and Personal care and effects are increasing. However, as the numerical figures indicate the increase in prices in recent months are much lower than the situation observed last year.

Table (D) shows Inflation rate based on last year's similar month comparison. As can be seen from the table the August 2009 General year-on-year inflation has declined by 3.9 percent as compared to the one observed in August 2008. The 3.9 percent decline in General inflation rate is due to the fact that the General Consumer price Index (CPI) of 175.1 percent observed in August 2009 was less than the corresponding 182.3 percent General Consumer Price Index (CPI) observed in August 2008. The main reason for the decline in General Consumer Price Index in August 2009 is the fall in the prices of food components specially, cereals, as compared to the one observed in August 2008. Similarly, the year-on-year Food inflation declined by 12.8 percent in August 2009 as compared to the one observed in August 2008. The reason for the decline in the food Inflation rate was that the 190.5 percent Food Consumer price Index (CPI) observed in August 2009 was less than the corresponding 218.5 percent Food Consumer Price Index (CPI) observed in August 2008. However, the Non-Food inflation increased by 15.3 percent in August 2009 as compared to the one observed in August 2008.

ሠንጠረዥ ሐ: በአገር አቀፍ ደረጃ የዋጋ ግሽበት ሁኔታ

Table C: The Country Level General Inflation Rate

በጀት ዓመት (ወር)	የዋጋ ግሽበት ሁኔታ			Budget Year and months
	አጠቃላይ የዋጋ ግሽበት	የምግብ ግሽበት	የምግብ ያልሆኑ የዋጋ ግሽበት	
የ2000 በጀት ዓመት በወራት				The 2007/8 Budget Year in Months
ዓመታዊ አማካይ (ሐምሌ 1999 - ሰኔ 2000)	18.4	23.6	11.6	Annual Average (July 2007 - June 2008)
ዓመታዊ አማካይ (ሐምሌ 2000 - ሰኔ 2001)	40.6	54.1	21.0	Annual Average (July 2008 - June 2009)
ሰኔ 2000	25.3	34.9	12.5	June 2008
ሐምሌ 2000	29.6	41.3	13.8	July 2008
ነሐሴ 2000	33.6	46.9	15.4	August 2008
መስከረም 2001	37.2	51.8	17.0	September 2008
ጥቅምት 2001	40.3	55.7	18.8	October 2008
ኅዳር 2001	42.8	58.7	20.4	November 2008
ታህሳስ 2001	44.4	60.0	21.9	December 2008
ጥር 2001	45.6	60.9	23.4	January 2009
የካቲት 2001	46.1	61.1	24.2	February 2009
መጋቢት 2001	45.2	59.2	24.4	March 2009
ሚያዝያ 2001	44.3	57.2	24.6	April 2009
ግንቦት 2001	41.6	52.6	24.6	May 2009
ሰኔ 2001	36.4	44.2	23.7	June 2009
ሐምሌ 2001	29.9	34.2	22.9	July 2009
ነሐሴ 2001	24.1	25.4	21.8	August 2009
Budget Year	Inflation Rate			
	Overall Inflation rate	Food Inflation rate	Non-food Inflation rate	

Revised (From January 2007 – November 2007)

ሠንጠረዥ መ: የዘንድሮውና የአምናው ተመሳሳይ ወሮች የሽማግብት ዋጋ መመዘኛ ኢንዱስትሪ ለውጥ ንፅፅር በአገር አቀፍ ደረጃ ማጠቃለያ

Table D: Summary of Comparison of CPI Movements, Current vs. Last year's Similar Months at Country Level

በጀት ዓመት (ወር)	የዋጋ ግሽበት ሁኔታ ካለፈው ዓመት ተመሳሳይ ወር ጋር ሲነፃፀር			Budget Year and months
	አጠቃላይ የዋጋ ግሽበት	የምግብ የዋጋ ግሽበት	የምግብ ነክ ያልሆኑ የዋጋ ግሽበት	
የ2000 በጀት ዓመት በወራት				The 2007/8 Budget Year in Months
ዓመታዊ አማካይ (ሐምሌ 1999 - ሰኔ 2000)	24.9	34.2	12.3	Annual Average (July 2007 - June 2008)
ዓመታዊ አማካይ (ሐምሌ 2000 - ሰኔ 2001)	38.7	48.6	24.1	Annual Average (July 2008 - June 2009)
ሰኔ 2000	55.2	78.3	23.2	June 2008
ሐምሌ 2000	64.2	91.7	24.9	July 2008
ነሐሴ 2000	61.7	85.0	27.1	August 2008
መስከረም 2001	59.6	80.9	27.3	September 2008
ጥቅምት 2001	55.4	72.3	29.5	October 2008
ኅዳር 2001	49.4	63.3	28.2	November 2008
ታህሳስ 2001	39.3	46.7	27.9	December 2008
ጥር 2001	37.8	44.8	27.0	January 2009
የካቲት 2001	32.8	38.9	23.5	February 2009
መጋቢት 2001	23.7	26.5	19.2	March 2009
ሚያዝያ 2001	23.4	25.4	20.3	April 2009
ግንቦት 2001	14.2	11.6	18.7	May 2009
ሰኔ 2001	2.7	-3.4	15.0	June 2009
ሐምሌ 2001	-3.7	-12.4	15.4	July 2009
ነሐሴ 2001	-3.9	-12.8	15.3	August 2009
Budget Year	Inflation Rate based on last year's similar month comparison			
	Overall Inflation rate	Food Inflation rate	Non-food Inflation rate	

Revised (From January 2007 – November 2007)

የዘንድሮውና የአምናው ተመሳሳይ ወሮች የችርቻሮ ዋጋ መመዘኛ ጠቋሚ አሀዝ ንፅፅር በአገር አቀፍ ደረጃ

Comparison of CPI Movements, Current vs Last year's Similar Months at Country Level

ከሠንጠረዥ 1(ሀ) መረዳት እንደሚቻለው የነሐሴ ወር 2001 ዓ.ም የአገር አቀፍ ጠቅላላ የችርቻሮ ዋጋ ኢንዱክስ ከነሐሴ ወር 2000 ዓ.ም ጠቅላላ ኢንዱክስ ጋር ሲነፃፀር በ3.9 ከመቶ ቅናሽ አሳይቶአል። ለዚህ መቀነስ ምክንያት የሆነው በምግብ ኢንዱክስ ላይ የታየው የ12.8 ከመቶ ቅናሽ ነው። በሌላ በኩል መጠጥ በ7.5 ከመቶ፣ ሲጋራና ትምባሆ 20.4 ከመቶ፣ ልብስና መጫሚያ በ27.6 ከመቶ፣ የቤት ኪራይ፣ የቤት መሥሪያ ዕቃዎች፣ ወሃና ኢነርጂ በ11.1 ከመቶ፣ የቤት ዕቃዎች፣ ቤት ማስገጫዎች፣ የቤት ቁሳቁስና የቤት ሠራተኛ ደመወዝ በ17.4 ከመቶ፣ ህክምና 14.2 ከመቶ፣ ትራንስፖርትና መገናኛ በ9.8 ከመቶ፣ መገናኛና ትምህርት በ17.4 ከመቶ፣ የግል ንጽህናና የግል ቋሚ ዕቃዎች በ23.5 ከመቶ እና ሌሎች ዕቃዎች በ10.1 ከመቶ በየኢንዱስትሪው ላይ ጭማሪ አሳይተዋል።

ሠንጠረዥ 1(ለ) እንደሚያሳየው ለጠቅላላ ምግብ ኢንዱክስ 12.8 ከመቶ መቀነስ ምክንያት የሆኑት የምግብ ክፍሎች ማለትም እህል በ23.3 ከመቶ፣ ጥራጥራ በ3.3 ከመቶ፣ ዘይትና ቅባቶች በ7.3 ከመቶ እና ቅመማ ቅመም በ59.5 ከመቶ በኢንዱስትሪው ላይ ቅናሽ በማሳየታቸው ነው። በሌላ በኩል ዳቦና ሌሎች የተዘጋጁ ምግቦች በ3.7 ከመቶ፣ ሥጋ በ7.9 ከመቶ፣ ወተት፣ አይብና ዕንቁላል በ17.7 ከመቶ፣ አትክልትና ፍራፍሬ በ14.5 ከመቶ፣ ድንችና ሌሎች ስራ ስሮች በ0.6 ከመቶ፣ ያልተቆላ ቡናና ሻይ ቅጠል በ15.6 ከመቶ፣ ሌሎች ምግቦች በ26.2 ከመቶ፣ የማስፈጫ አገልግሎት በ16.9 ከመቶ እና ከቤት ወጪ የተወሰዱ ምግቦች በ15.4 ከመቶ ዕድገት በየኢንዱስትሪው ላይ አሳይተዋል።

ሠንጠረዥ (መ) የሚያሳየው የዋጋ ግሽበት ሁኔታ ካለፈው ዓመት ተመሳሳይ ወር ጋር በማነፃፀር ነው። ከሠንጠረዥ መረዳት እንደሚቻለው የነሐሴ ወር 2001 ዓ.ም አጠቃላይ የዋጋ ግሽበት ካለፈው ዓመት ነሐሴ ወር 2000 ዓ.ም ጋር ሲነፃፀር በ3.9 ከመቶ ዝቅ ብሎአል። ለዚህ ምክንያቱ በነሐሴ ወር 2001 ዓ.ም የተመዘገበው አጠቃላይ የዋጋ መመዘኛ ኢንዱክስ 175.1 ከመቶ በነሐሴ ወር 2000 ከተመዘገበው 182.3 ከመቶ አጠቃላይ የዋጋ መመዘኛ ኢንዱክስ አንሶ በመገኘቱ ነው። ለአጠቃላይ ዋጋ ግሽበቱ መቀነስ ዋናው ምክንያት በምግብ ክፍሎች በተለይም በእህል ዋጋ ላይ ካለፈው ዓመት ነሐሴ ወር ጋር ሲነፃፀር የታየው ቅናሽ ነው። በተመሳሳይ ሁኔታ የምግብ ዋጋ ግሽበትም የነሐሴ ወር 2001 ዓ.ም ካለፈው ዓመት ነሐሴ ወር 2000 ዓ.ም ጋር ሲነፃፀር በ12.8 ከመቶ ቅናሽ አሳይቶአል። ለዚህ ቅናሽ ምክንያቱ በነሐሴ ወር 2001 ዓ.ም የተመዘገበው የምግብ ዋጋ መመዘኛ ኢንዱክስ 190.5 ከመቶ በነሐሴ ወር 2000 ዓ.ም ከተመዘገበው 218.5 ከመቶ የምግብ ዋጋ መመዘኛ ኢንዱክስ አንሶ በመገኘቱ ነው። ሆኖም ምግብ ነክ ያልሆኑ የኢንዱስትሪ ክፍሎች የዋጋ ግሽበት የነሐሴ ወር 2001 ዓ.ም ካለፈው ዓመት ነሐሴ ወር 2000 ዓ.ም ጋር ሲነፃፀር የ15.3 በመቶ ጭማሪ አሳይቷል።

The August 2009 Country Level Consumer Price Index has decreased by 3.9 percent as compared to August 2008 (Table 1(a)). This decline in the General Consumer Price Index is attributed to the decline in the food index by 12.8 percent. On the other hand, a rise was observed in the indices of Beverages by 7.5 percent, Cigarettes and Tobacco by 20.4 percent, Clothing and Footwear by 27.6 percent, House Rent, Construction Materials, Water and Fuel and Power by 11.1 percent, Furniture, Furnishings, Household Equipment and Operation by 17.4 percent, Medical Care and Health by 14.2 percent, Transport and Communication by 9.8 percent, Recreation, Entertainment and Education by 17.4 percent, Personal Care Effects by 23.5 percent and Miscellaneous Goods by 10.1 percent .

The 12.8 percent decline in the Food index was observed due to the fall in the indices of the components of Food index (Table 1(b)) namely: Cereals by (23.3 percent), Pulses (3.3 percent), oils and Fats (7.3 percent) and Spices by (59.5 percent). On the other hand, rises were observed in the indices of Bread and Other Prepared Food (3.7 percent), Meat (7.9 percent), Milk, Cheese and Eggs (17.7 percent), Vegetables and fruits (14.5 percent), Potatoes, Other Tubers and Stems (0.6 percent), Coffee and Tea Leaves (15.6 percent), other Food Items (26.2 percent), Milling Charge by (16.9 percent), and Food Taken Away from Home (15.4 percent) respectively.

Table (D) shows Inflation rate based on last year's similar month comparison. As can be seen from the table the August 2009 General year-on-year inflation has declined by 3.9 percent as compared to the one observed in August 2008. The 3.9 percent decline in General inflation rate is due to the fact that the General Consumer price Index (CPI) of 175.1 percent observed in August 2009 was less than the corresponding 182.3 percent General Consumer Price Index (CPI) observed in August 2008. The main reason for the decline in General Consumer Price Index in August 2009 is the fall in the prices of food components specially, cereals, as compared to the one observed in August 2008. Similarly, the year-on-year Food inflation declined by 12.8 percent in August 2009 as compared to the one observed in August 2008. The reason for the decline in the food Inflation rate was that the 190.5 percent Food Consumer price Index (CPI) observed in August 2009 was less than the corresponding 218.5 percent Food Consumer Price Index (CPI) observed in August 2008. However, the Non-Food inflation increased by 15.3 points in August 2009 as compared to the one observed in August 2008.

**የዘንድሮውና የአምናው ተመሳሳይ ወሮች
የችርቻሮ ዋጋ መመዘኛ ጠቋሚ አሀዝ ንፅፅር በአገር አቀፍና በክልሎች ደረጃ**
Comparison of CPI Movements, Current vs Last year at Country and
Regional Levels

ከሠንጠረዥ 2(ሀ) መረዳት እንደሚቻለው የነሐሴ ወር 2001 ዓ.ም የአገር አቀፍ ጠቅላላ የችርቻሮ ዋጋ መመዘኛ ኢንዱክስ ከነሐሴ ወር 2000 ዓ.ም ጠቅላላ ኢንዱክስ ጋር ሲነፃፀር በ3.9 ከመቶ ቅናሽ አሳይቶአል። ለዚህ ቅናሽ አስተዋጽኦ ያደረጉት አማራ 5.9 ከመቶ፣ ቤኔሻንጉል ጉሙዝ 6.7 ከመቶ፣ በጋምቤላ 8.2 ከመቶ፣ ኦሮሚያ 5.3 ከመቶ፣ ደቡብ ብሄሮች ብሄረሰቦችና ሕዝቦች 4.5 ከመቶ እና ትግራይ 5.2 ከመቶ በጠቅላላ ኢንዱክሶቻቸው ላይ ቅናሽ በማሳየታቸው ነው። በሌላ በኩል አዲስ አበባ 6.0 ከመቶ፣ አፋር 0.6 ከመቶ፣ ድሬዳዋ 3.4 ከመቶ፣ ሐረሪ 3.5 ከመቶ እና ሶማሌ 1.2 ከመቶ በኢንዱክሶቻቸው ላይ ጭማሪ አሳይተዋል።

Table 2(a) also displays that the August 2009 Country level General Consumer Price Index has decreased by 3.9 percent as compared to August 2008. This decrease was attributed to the decline in the indices of its constituent regions; namely: Amhara 5.9 percent, Benishangul Gumuz 6.7 percent, Gambela 8.2 percent, Oromia 5.3 percent, SNNP by 4.5 percent and Tigray 5.2 percent. On the other hand, increase in the General consumer price indices were observed for the regions of Addis Ababa 6.0 percent, Afar 0.6 percent, Dire Dawa 3.4 percent, Harari 3.5 percent and Somali 1.2 percent.

ሠንጠረዥ 2(ለ) እንደሚያሳየው አገር አቀፍ ጠቅላላ የምግብ ዋጋ መመዘኛ ኢንዱክስ 12.8 ከመቶ መቀነስ ምክንያት የሆኑት አዲስ አበባ በ2.0 ከመቶ፣ አፋር 2.7 ከመቶ፣ አማራ በ12.8 ከመቶ፣ ቤኔሻንጉል ጉሙዝ በ14.1 ከመቶ፣ ድሬዳዋ በ1.1 ከመቶ፣ ጋምቤላ በ16.8 ከመቶ፣ ሐረሪ በ5.0 ከመቶ፣ ኦሮሚያ 14.5 ከመቶ፣ ደቡብ ብሄሮች፣ ብሄረሰቦችና ሕዝቦች 13.8 ከመቶ ሶማሌ በ5.4 ከመቶ እና ትግራይ 15.8 ከመቶ በምግብ ኢንዱክሶቻቸው ላይ ቅናሽ በማሳየታቸው ነው።

Table 2(b) reveals that the 12.8 percent decrease in the country level Food index was observed due to the fall in the indices of the regions namely: Addis Ababa 2.0 percent, Afar 2.7 percent, Amhara 12.8, Benishangul Gumuz 14.1 percent, Dire Dawa 1.1 percent, Gambela 16.8 percent, Harari 5.0 percent, Oromia 14.5 percent, SNNP 13.8 percent, Somali 5.4 percent and Tigray 15.8 percent.

ወንጠራዥ 1ሀ- ጠቅላላ የ ሽያጭ ዋጋ መጠኛ ኢንዱክስ በሥራ የተሳተፉ ክፍሎች በአገር አቀፍ ደረጃ
 ታህሳስ 1999 = 100

Table 1a: General Consumer Price Index and Its Components at Country Level
 December 2006 = 100

ወርና ዓመት	ጠቅላላ ኢንዱክስ General Index	ጠቅላላ የምግብ ኢንዱክስ Food Total	ጠቅላላ የምግብ ክ ስልጣን ኢንዱክስ Non-Food Total	የምግብ ክ ስልጣን የኢንዱክስ ክፍሎች Non-food Consumer Price Index Components											Month and Year
				መጠጥ Beverages	ሲጃራና ትምብዋ Cigarettes and Tobacco	ልሳሽና መጫጫያ Clothing and Footwear	የቤት ኪራይ፣ የቤት መሥሪያ ስቃዎች+ውሃ፣ ነጻጅናሃይል House Rent, Construction Materials, Water, and Fuel and Power	የቤት ስቃዎች የቤት ግዝጊያዎች የቤት ተሳታፊዎች የቤት ሠራተኛ ደመወዝ Furniture, Furnishings, Household Equipment and Operation	ሕክምና Medical Care and Health	ትራንስፖርትና መገናኛ Transport and Communication	መዝናኛና ትምህርት Recreation, Entertainment and Education	የግል ጉልበና ስቃዎች Personal Care and Effects	ሌሎች ስቃዎች Miscellaneous Goods		
ታህሳስ 1999	100.0	100.0	100.0	100.0	100.0	100.0	100.0	100.0	100.0	100.0	100.0	100.0	100.0	100.0	December 2006
ሐምሌ 1999 - በኔ 2000	126.9	137.2	113.3	113.5	107.8	117.0	112.0	125.5	111.9	105.3	106.9	112.6	104.7	115.5	July 2007 - June 2008
ሐምሌ 2000 - በኔ 2001	173.1	198.0	140.1	175.8	141.2	149.8	136.6	159.8	128.2	112.8	124.9	142.2	115.5	July 2008 - June 2009	
2001															2008/2009
ሐምሌ 2000	179.9	216.6	131.2	166.9	125.5	131.6	130.5	148.4	120.8	112.1	115.4	131.3	111.8	July 2008	
ኔሐሴ 2000	182.3	218.5	134.3	171.6	131.2	135.9	133.5	151.4	122.6	112.1	118.3	134.3	113.3	August "	
መስከረም 2001	184.1	220.6	135.5	173.8	131.4	138.8	133.8	153.2	124.0	112.2	120.1	134.8	116.1	September "	
ጥቅምት 2001	182.0	214.3	139.2	176.3	132.6	141.7	138.2	155.6	125.7	124.2	121.4	134.5	115.0	October "	
ጥር 2001	175.1	202.2	139.2	175.2	133.5	146.6	136.1	157.2	125.8	120.0	123.6	138.0	115.0	November "	
ታህሳስ 2001	165.0	184.3	139.4	174.3	136.0	148.6	136.7	157.5	124.8	113.6	124.0	137.2	113.6	December "	
ጥር 2001	165.6	185.3	139.5	177.0	139.7	150.4	136.3	158.1	126.3	109.0	124.8	138.6	113.4	January 2009	
የካቲት 2001	167.1	186.1	141.8	178.1	148.1	156.4	137.0	163.5	128.1	107.5	126.4	144.4	114.3	February "	
መጋቢት 2001	167.2	185.9	142.5	177.4	151.9	158.4	136.5	165.1	131.8	107.7	128.7	148.4	116.3	March "	
ሚያዝያ 2001	169.2	187.8	144.6	178.7	153.1	160.8	139.0	167.7	132.3	108.3	131.0	152.3	116.9	April "	
ግንቦት 2001	168.8	185.6	146.4	178.9	154.9	162.8	140.6	169.3	136.1	111.3	131.7	153.2	119.6	May "	
በኔ 2001	171.2	188.6	148.0	181.3	157.1	165.7	141.2	170.3	139.7	115.5	133.2	158.8	120.8	June "	
2002															2009/2010
ሐምሌ 2001	173.3	189.8	151.5	182.8	159.4	169.3	144.6	174.6	140.2	121.7	136.7	163.0	121.9	July 2009	
ኔሐሴ 2001	175.1	190.5	154.7	184.4	158.0	173.4	148.4	177.8	140.0	123.4	138.9	165.8	124.8	August "	
	-3.9	-12.8	15.2	7.5	20.4	27.6	11.1	17.4	14.2	9.8	17.4	23.5	10.1		

ወንጠራዊ ድህረ ገጽ ለጥቅም ላይ የዋለው የአገር አቀፍ እና በአካባቢ ደረጃ
 ታህሳስ 1999 = 100

Table 2a: Summary of General Consumer Price Indices at Country and Regional Levels
 December 2006=100

ወርና ዓመት	Reporting Level												Month and Year	
	Eth.	A.A.	Afar	Amhara	B.Gumuz	D.Dawa	Gambela	Harari	Oromia	SNNP	Somalia	Tigray		
ታህሳስ 1999	100.0	100.0	100.0	100.0	100.0	100.0	100.0	100.0	100.0	100.0	100.0	100.0	100.0	December 2006
ሐምሌ 1999 - ሰኔ 2000	126.9	121.8	124.3	127.8	137.7	125.6	123.7	119.1	129.0	125.6	118.5	130.1	130.1	July 2007 - June 2008
ሐምሌ 2000 - ሰኔ 2001	173.1	157.6	158.3	172.1	193.9	167.6	193.2	169.5	179.5	173.9	170.8	183.0	183.0	July 2008 - June 2009
2001														2008/2009
ሐምሌ 2000	179.9	155.4	162.3	180.5	201.4	160.4	197.8	163.7	188.3	184.1	167.8	187.5	187.5	July 2008
ነሐሴ 2000	182.3	156.6	164.4	182.5	212.9	167.9	217.2	170.1	190.4	185.3	174.6	192.7	192.7	August "
መስከረም 2001	184.1	157.9	165.1	185.1	218.6	168.4	218.0	171.6	190.9	187.5	178.2	199.3	199.3	September "
ጥቅምት 2001	182.0	160.8	164.6	185.1	204.7	169.8	219.7	173.6	187.9	181.1	175.1	198.5	198.5	October "
ጥቅምት 2001	175.1	159.7	159.2	179.9	200.6	167.4	194.6	169.4	179.8	172.3	170.1	187.8	187.8	November "
ታህሳስ 2001	165.0	155.0	152.1	166.5	186.9	166.5	180.9	166.1	168.2	164.9	154.8	177.8	177.8	December "
ጥር 2001	165.6	153.2	152.3	164.6	178.9	164.9	176.3	165.4	171.7	164.9	164.3	174.3	174.3	January 2009
ፀሐይት 2001	167.1	155.0	153.8	164.8	181.3	167.8	178.5	169.5	173.6	166.2	169.9	174.8	174.8	February "
መጋቢት 2001	167.2	156.6	154.1	163.5	184.3	168.4	177.2	169.5	173.8	166.5	169.3	176.9	176.9	March "
ግድምት 2001	169.2	159.0	156.7	165.0	184.5	169.5	180.5	170.1	175.5	170.3	171.9	178.0	178.0	April "
ጥንሰት 2001	168.8	160.6	156.8	163.4	184.4	169.7	186.2	170.6	174.9	171.1	173.5	173.1	173.1	May "
ሰኔ 2001	171.2	160.9	158.7	164.5	188.3	170.5	191.6	174.7	178.8	172.6	179.5	175.8	175.8	June "
2002														2009/2010
ሐምሌ 2001	173.3	164.0	161.5	169.6	198.5	171.3	197.8	177.7	178.8	174.6	178.8	180.2	180.2	July 2009
ነሐሴ 2001	175.1	166.0	165.4	171.7	198.6	173.6	199.3	176.0	180.3	177.0	176.8	182.7	182.7	August "

ሠንጠረዥ 3 ሀ:- ጠቅላላ የሽግግር ዋጋ መመዘኛ ሊንደክስ ቢሥሩ የተካተቱ ክፍሎች ለሊዲስ አበባ ከተማ መስተዳድር
 ታህሳስ 1999 = 100

Table 3a: General Consumer Price Index and Its Components for Addis Ababa City Administration
 December 2006 = 100

ወርና ዓመት	ጠቅላላ ሊንደክስ General Index	ጠቅላላ ምግብ ሊንደክስ Food Total	ጠቅላላ ምግብ ክፍል ሊንደክስ Non-Food Total	Non-food Consumer Price Index Components											Month and Year	
				ምግብ ክፍል የሊንደክስ ክፍሎች Beverages	ቢሻራና ትምባዩ Cigarettes and Tobacco	ላብስና መጫወያ Clothing and Footwear	የቤት ቢራይ የቤት መሥሪያ ስቃዎች+ውሃ ነዳጅናገደል House Rent, Construction Materials, Water, and Fuel and Power	የቤት ስቃዎች የቤት ግንባታዎች የቤት ተሳታፊዎች የቤት ሠራተኛ ደመወዝ Furniture, Furnishings, Household Equipment and Operation	ሕክምና Medical Care and Health	ትራንስፖርትና መገናኛ Transport and Communication	መዝናኛና ትምህርት Recreation, Entertainment and Education	የገልጽ ጽግራ ስቃዎች Personal Care and Effects	ሌሎች ስቃዎች Miscellaneous Goods			
ታህሳስ 1999	100.0	100.0	100.0	100.0	100.0	100.0	100.0	100.0	100.0	100.0	100.0	100.0	100.0	100.0	100.0	December 2006
ሐምሌ 1999 - ሰኔ 2000	121.8	134.8	112.8	127.4	108.7	127.9	106.2	132.3	124.3	102.3	104.4	118.6	104.7	104.7	104.7	July 2007 - June 2008
ሐምሌ 2000 - ሰኔ 2001	157.6	190.7	134.5	177.8	156.8	164.4	120.6	165.7	146.0	114.9	121.7	146.6	124.8	124.8	124.8	July 2008 - June 2009
2001																2008/2009
ሐምሌ 2000	155.4	195.2	127.7	174.1	127.9	148.3	119.7	155.6	145.6	108.3	108.5	139.5	117.0	117.0	117.0	July 2008
ክሌሌ 2000	156.6	197.5	128.2	174.4	129.7	151.3	118.7	157.7	141.4	108.4	109.3	139.5	121.7	121.7	121.7	August "
መስከረም 2001	157.9	198.8	129.4	178.1	129.2	155.6	118.6	160.0	141.0	108.4	112.7	140.0	121.6	121.6	121.6	September "
ጥቅምት 2001	160.8	196.8	135.8	177.4	129.0	158.1	126.6	161.7	145.8	123.9	114.8	140.9	121.5	121.5	121.5	October "
ኅዳር 2001	159.7	194.8	135.3	177.7	144.3	160.0	121.8	165.9	145.8	122.3	119.7	144.0	121.6	121.6	121.6	November "
ታህሳስ 2001	155.0	184.8	134.4	174.7	163.6	162.9	121.1	163.5	145.2	116.4	124.2	142.0	121.8	121.8	121.8	December "
ጥር 2001	153.2	181.9	133.3	174.3	172.0	164.5	118.5	164.7	145.9	113.0	123.9	143.0	123.1	123.1	123.1	January 2009
የካቲት 2001	155.0	183.4	135.2	178.3	179.0	169.8	119.1	168.5	144.1	113.0	127.0	148.1	123.1	123.1	123.1	February "
መጋቢት 2001	156.6	186.0	136.2	179.4	183.1	172.5	119.2	170.5	145.9	113.0	128.8	152.1	121.3	121.3	121.3	March "
ሚያዝያ 2001	159.0	189.4	137.9	181.5	180.2	178.1	119.6	172.2	146.1	112.9	130.1	155.0	132.1	132.1	132.1	April "
ግንቦት 2001	160.6	191.0	139.5	180.9	170.3	176.7	121.2	174.2	148.6	117.4	131.3	156.2	134.4	134.4	134.4	May "
ሰኔ 2001	160.9	189.3	141.1	182.6	173.5	175.0	123.0	173.6	156.2	122.0	130.6	158.8	139.1	139.1	139.1	June "
2002																2009/2010
ሐምሌ 2001	164.0	191.8	144.7	187.6	173.2	179.7	125.3	174.0	156.2	132.3	130.9	158.3	142.1	142.1	142.1	July 2009
ክሌሌ 2001	166.0	193.5	146.9	190.0	163.8	184.6	126.2	178.6	157.6	134.0	133.4	155.3	149.1	149.1	149.1	August "

ወንጠራዥ ልሀ፡- ጠቅላላ የ ሽግግር ዋጋ መመዘኛ ሊንደክስ ስሥሩ የተካተቱ ክፍሎች ለሌላ ሁሉም መገገሚያ ስሥሩ 1999 = 100

Table 4a: General Consumer Price Index and Its Components for the Afar Regional State
December 2006 = 100

ወርና ዓመት	ጠቅላላ ሊንደክስ General Index	ጠቅላላ የምግብ ሊንደክስ Food Total	ጠቅላላ የምግብ ክፍል ሊንደክስ Non-Food Total	Non-food Consumer Price Index Components											Month and Year	
				የምግብ ክፍል ሊንደክስ ክፍሎች Beverages	ሲጃራትና ትብብር Cigarettes and Tobacco	ልብና መጫጫ Clothing and Footwear	የቤት ኪራይ የቤት መሥሪያ ስቃዎችናውሃ ነጻጅናሃይል House Rent, Construction Materials, Water, and Fuel and Power	የቤት ስቃዎች የቤት ግብይቶች የቤት ተሳታፊዎች የቤት ሠራተኛ ደመወዝ Furniture, Furnishings, Household Equipment and Operation	ሕክምና Medical Care and Health	ትራንስፖርትና ግንኙነት Transport and Communication	መዝናኛና ትምህርት Recreation, Entertainment and Education	የግል ንጽባናና የግል ጽግ ስቃዎች Personal Care and Effects	ሌሎች ስቃዎች Miscellaneous Goods			
ታህሳስ 1999	100.0	100.0	100.0	100.0	100.0	100.0	100.0	100.0	100.0	100.0	100.0	100.0	100.0	100.0	100.0	December 2006
ሐምሌ 1999 - ሰኔ 2000	124.3	136.1	110.2	109.2	102.5	114.5	107.3	113.8	100.6	124.4	92.2	107.2	101.5	101.5	101.5	July 2007 - June 2008
ሐምሌ 2000 - ሰኔ 2001	158.3	189.5	121.3	136.1	131.5	130.8	110.0	143.4	109.7	112.6	107.8	122.5	106.9	106.9	106.9	July 2008 - June 2009
2001																2008/2009
ሐምሌ 2000	162.3	198.7	119.1	132.3	118.0	123.6	112.3	135.6	89.2	130.8	95.3	118.6	104.4	104.4	104.4	July 2008
ነሐሴ 2000	164.4	200.6	121.4	132.3	123.4	132.6	111.6	137.0	93.0	130.8	97.9	118.0	104.3	104.3	104.3	August "
መስከረም 2001	165.1	201.0	122.4	134.5	131.3	131.3	112.4	138.9	115.4	130.8	102.2	120.6	105.3	105.3	105.3	September "
ጥቅምት 2001	164.6	200.0	122.4	129.7	132.5	129.4	112.9	139.3	116.3	133.1	104.4	121.1	106.6	106.6	106.6	October "
ገዳር 2001	159.2	192.5	119.6	129.7	132.8	128.6	108.6	139.8	112.5	117.7	101.9	119.7	106.7	106.7	106.7	November "
ታህሳስ 2001	152.1	180.2	118.7	129.7	132.8	126.8	108.5	141.0	107.2	106.0	107.6	119.6	106.7	106.7	106.7	December "
ጥር 2001	152.3	180.1	119.4	129.7	136.8	131.6	107.8	141.0	106.8	97.7	109.7	122.3	106.7	106.7	106.7	January 2009
ፕሪብሪ 2001	153.8	182.1	120.1	134.0	136.8	133.6	107.7	141.2	106.8	97.7	115.0	123.1	107.4	107.4	107.4	February "
መጋቢት 2001	154.1	181.5	121.5	137.9	133.9	134.0	108.0	146.6	115.5	97.7	116.1	125.4	108.6	108.6	108.6	March "
ግድረት 2001	156.7	185.0	123.1	142.3	132.6	133.6	109.9	152.5	112.7	97.7	115.4	127.7	109.0	109.0	109.0	April "
ግንቦት 2001	156.8	185.3	122.9	149.6	132.6	133.7	107.5	154.4	114.2	103.4	115.5	125.4	109.6	109.6	109.6	May "
ሰኔ 2001	158.7	187.2	124.9	151.5	133.9	130.8	113.1	153.7	126.5	107.8	112.5	128.0	108.1	108.1	108.1	June "
2002																2009/2010
ሐምሌ 2001	161.5	188.4	129.5	159.3	133.9	139.0	118.5	151.9	126.9	114.7	113.1	130.4	109.7	109.7	109.7	July 2009
ነሐሴ 2001	165.4	195.1	130.1	152.6	134.0	144.6	117.0	151.7	126.9	116.7	110.6	129.1	111.1	111.1	111.1	August "

ወንጠራዎች 50:- ጠቅላላ የ ሽግግሮች ዋጋ መመዘኛ ኢንዱክስ በሥነ- የተከተተ ክፍሎች ለአገራ ከላላዊ መንግሥት ታህሳስ 1999 = 100

Table 5a: General Consumer Price Index and Its Components for the Amhara Regional State
December 2006 = 100

ወርና ዓመት	ጠቅላላ ኢንዱክስ General Index	ጠቅላላ የምግብ ኢንዱክስ Food Total	ጠቅላላ የምግብ ክፍል ኢንዱክስ Non-Food Total	Non-food Consumer Price Index Components											Month and Year	
				የምግብ ክፍል ኢንዱክስ ክፍሎች Beverages	ሲጃራና ትታካህ Cigarettes and Tobacco	ልብና መጫጫያ Clothing and Footwear	የቤት ኪራይ የቤት መሥሪያ ስቃዎች+ውሃ ነጻጅናሃይል House Rent, Construction Materials, Water, and Fuel and Power	የቤት ስቃዎች የቤት ግብይቶች የቤት ተሳታፊዎች የቤት ሠራተኛ ደመወዝ Furniture, Furnishings, Household Equipment and Operation	ሕክምና Medical Care and Health	ትራንስፖርትና መገናኛ Transport and Communication	መዝናኛና ትምህርት Recreation, Entertainment and Education	የግል ንጽባናና የግል ጽግ ስቃዎች Personal Care and Effects	ሌሎች ስቃዎች Miscellaneous Goods			
ታህሳስ 1999	100.0	100.0	100.0	100.0	100.0	100.0	100.0	100.0	100.0	100.0	100.0	100.0	100.0	100.0	100.0	December 2006
ሐምሌ 1999 - ሰኔ 2000	127.8	139.6	108.4	112.4	115.8	109.5	105.8	120.9	112.8	106.6	108.2	117.8	101.6	101.6	101.6	July 2007 - June 2008
ሐምሌ 2000 - ሰኔ 2001	172.1	198.7	128.4	198.7	154.5	132.4	118.5	156.1	124.2	113.2	127.4	148.3	103.4	103.4	103.4	July 2008 - June 2009
2001																2008/2009
ሐምሌ 2000	180.5	216.5	121.5	190.9	145.5	115.0	115.4	142.5	121.7	116.4	115.2	141.3	103.1	103.1	103.1	July 2008
ነሐሴ 2000	182.5	218.0	124.2	199.5	141.2	121.1	117.0	144.1	121.3	116.4	118.1	144.3	103.2	103.2	103.2	August "
መስከረም 2001	185.1	221.4	125.5	202.5	145.7	122.6	117.5	149.6	116.6	116.6	121.7	147.8	103.2	103.2	103.2	September "
ጥቅምት 2001	185.1	220.9	126.2	201.4	147.0	125.4	118.4	147.1	118.0	122.1	122.1	139.4	103.2	103.2	103.2	October "
ገዳር 2001	179.9	212.2	126.9	202.5	147.0	129.6	117.7	150.3	118.5	119.0	123.2	142.1	103.2	103.2	103.2	November "
ታህሳስ 2001	166.5	190.7	126.8	202.4	148.0	131.4	116.7	152.5	118.5	113.4	123.5	143.4	103.2	103.2	103.2	December "
ጥር 2001	164.6	187.8	126.6	201.3	147.7	132.8	115.6	155.6	123.2	107.8	124.0	144.5	103.2	103.2	103.2	January 2009
ፕሪላ 2001	164.8	185.9	130.0	199.1	152.8	136.7	119.2	162.1	123.9	108.2	130.5	148.1	103.2	103.2	103.2	February "
መጋቢት 2001	163.5	184.0	129.9	190.9	161.8	138.7	118.0	164.9	129.5	108.4	132.0	152.2	103.9	103.9	103.9	March "
ግድሳኝ 2001	165.0	184.5	133.0	197.1	169.1	143.1	120.7	167.3	128.6	108.4	136.8	158.0	103.7	103.7	103.7	April "
ግንቦት 2001	163.4	180.8	134.8	198.1	175.6	145.6	122.8	167.1	134.1	109.5	141.2	157.2	103.9	103.9	103.9	May "
ሰኔ 2001	164.5	181.9	136.0	198.7	172.1	146.9	123.7	169.7	136.0	112.6	140.4	161.7	103.9	103.9	103.9	June "
2002																2009/2010
ሐምሌ 2001	169.6	187.4	140.3	201.6	171.4	151.4	128.3	172.7	137.4	115.7	142.4	172.7	104.0	104.0	104.0	July 2009
ነሐሴ 2001	171.7	190.0	141.5	201.4	167.6	152.0	129.8	175.0	135.3	116.2	146.3	174.4	103.9	103.9	103.9	August "

ወንጠራዎች ስራ፡- ጠቅላላ የ ሽንጃዎች ዋጋ መጠኖች ኢንዱስትሪ በሥራ የተካተቱ ክፍሎች ለቤኔሽንጎል ገምገማ አልገደ መገንጠት
 ታህሳስ 1999 = 100

Table 6a: General Consumer Price Index and Its Components for the Benishangul Gumuz Regional State
 December 2006 = 100

ወርና ዓመት	ጠቅላላ ኢንዱስትሪ General Index	ጠቅላላ ምግብ ኢንዱስትሪ Food Total	ጠቅላላ ምግብ ካልሆኑ ኢንዱስትሪ Non-Food Total	Non-food Consumer Price Index Components											Month and Year	
				ምግብ ካልሆኑ የኢንዱስትሪ ክፍሎች Beverages	ቢሻራና ትምባሆ Cigarettes and Tobacco	ላብስና መጫጫያ Clothing and Footwear	የቤት ቢራይቲ የቤት መሥሪያ ስቃዎች+ውሃና ንግድና የጸሐይ House Rent, Construction Materials, Water, and Fuel and Power	የቤት ስቃዎች የቤት ግንባታና የቤት ተሳታፊዎች ደመወዝ Furniture, Furnishings, Household Equipment and Operation	ሕክምና Medical Care and Health	ትራንስፖርትና መገናኛ Transport and Communication	መዝናኛና ትምህርት Recreation, Entertainment and Education	የግል ገጽቤና ግል ስቃዎች Personal Care and Effects	ሌሎች ስቃዎች Miscellaneous Goods			
ታህሳስ 1999	100.0	100.0	100.0	100.0	100.0	100.0	100.0	100.0	100.0	100.0	100.0	100.0	100.0	100.0	100.0	December 2006
ሐምሌ 1999 - ሰኔ 2000	137.7	148.2	123.7	111.2	113.2	123.8	141.3	114.6	111.0	101.0	112.2	115.2	103.3			July 2007 - June 2008
ሐምሌ 2000 - ሰኔ 2001	193.9	226.1	151.4	150.0	148.3	156.2	159.4	158.1	143.4	100.7	158.5	146.5	112.4			July 2008 - June 2009
2001																2008/2009
ሐምሌ 2000	201.4	246.8	141.4	143.3	144.0	140.9	148.4	150.1	130.0	100.4	143.4	137.7	109.2			July 2008
ክሌሌ 2000	212.9	262.9	146.9	149.2	143.3	142.0	158.7	151.1	137.4	100.4	154.4	140.4	111.1			August "
መስከረም 2001	218.6	272.8	146.8	148.3	137.9	147.2	158.5	146.0	138.1	100.4	155.4	141.3	111.1			September "
ጥቅምት 2001	204.7	246.6	149.4	148.6	133.8	151.4	159.4	152.8	138.4	106.9	158.1	139.0	113.3			October "
ንዓር 2001	200.6	237.8	151.5	149.5	140.1	160.8	157.6	157.2	140.6	106.9	158.4	143.4	114.4			November "
ታህሳስ 2001	186.9	215.0	149.8	148.2	140.0	159.3	152.2	161.1	140.0	106.7	158.8	141.6	116.3			December "
ጥር 2001	178.9	199.4	151.8	148.8	141.7	163.4	155.6	161.6	149.0	100.1	158.5	141.4	118.4			January 2009
የካቲት 2001	181.3	202.2	153.6	150.5	144.5	163.9	159.1	163.7	151.8	96.1	158.6	146.3	114.6			February "
መጋቢት 2001	184.3	206.8	154.7	150.7	163.1	162.1	161.8	163.2	150.0	96.1	161.7	153.5	113.6			March "
ሚያዝያ 2001	184.5	206.1	156.0	153.3	164.3	161.1	165.5	162.9	147.2	96.1	164.1	157.8	107.6			April "
ግንቦት 2001	184.4	205.1	157.0	154.1	164.8	161.8	167.6	162.7	149.5	96.1	165.5	157.3	107.6			May "
ሰኔ 2001	188.3	211.2	158.1	155.7	161.7	160.4	168.5	164.6	149.5	101.8	165.2	158.4	111.5			June "
2002																2009/2010
ሐምሌ 2001	198.5	225.5	162.8	156.5	164.0	164.2	170.7	180.9	152.8	105.6	166.7	164.3	112.1			July 2009
ክሌሌ 2001	198.6	225.8	162.7	155.7	166.0	163.1	169.4	185.1	151.0	104.8	166.1	166.4	112.1			August "

ሠንጠረዥ 7ሀ፡- ጠቅላላ የሽግግር ዋጋ መመዘኛ ኢንዱስትሪ ቢሥሩ የተካተቱ ክፍሎች ለድረጃ ለተገደባ ካውንሲል
 ታህሳስ 1999 = 100

Table 7a: General Consumer Price Index and Its Components for the Dire Dawa Administrative Council
 December 2006 = 100

ወርና ዓመት	ጠቅላላ ኢንዱስትሪ	ጠቅላላ የምግብ ኢንዱስትሪ	ጠቅላላ የምግብ ከፍተኛ ኢንዱስትሪ	Non-food Consumer Price Index Components											Month and Year
				የምግብ ከፍተኛ	ቤዕራና ትምባሆ	ላብሳና መጓጊያ	የቤት ቢራይቲ የቤት መሥሪያ ስቃዎች+ውሃ ነጻድናሃይል	የቤት ስቃዎች የቤት ግንባታዎች የቤት ተሳታፊዎች የቤት ሠራተኛ ደመወዝ	ሕክምና	ትራንስፖርትና ግንኙነት	መዝናኛና ትምህርት	የግል ንግድና የግል ተግባር ስቃዎች	ሌሎች ስቃዎች		
	General Index	Food Total	Non-Food Total	Beverages	Cigarettes and Tobacco	Clothing and Footwear	House Rent, Construction Materials, Water, and Fuel and Power	Furniture, Furnishings, Household Equipment and Operation	Medical Care and Health	Transport and Communication	Recreation, Entertainment and Education	Personal Care and Effects	Miscellaneous Goods		
ታህሳስ 1999	100.0	100.0	100.0	100.0	100.0	100.0	100.0	100.0	100.0	100.0	100.0	100.0	100.0	December 2006	
ሐምሌ 1999 - ሰኔ 2000	125.6	135.4	115.6	113.2	101.2	109.2	120.9	124.5	115.8	105.5	116.8	108.2	102.9	July 2007 - June 2008	
ሐምሌ 2000 - ሰኔ 2001	167.6	199.5	134.7	158.5	113.0	128.2	140.9	157.9	138.8	102.3	136.1	119.5	107.6	July 2008 - June 2009	
2001														2008/2009	
ሐምሌ 2000	160.4	192.8	126.9	153.3	108.1	113.9	137.4	142.2	126.8	105.4	128.0	113.7	106.3	July 2008	
ክሌሌ 2000	167.9	204.3	130.4	155.3	106.7	117.1	143.1	143.9	139.6	105.4	129.6	114.7	106.3	August "	
መስከረም 2001	168.4	204.4	131.3	156.3	112.6	120.7	142.0	146.5	138.9	105.5	127.7	118.5	106.3	September "	
ጥቅምት 2001	169.8	205.4	133.1	157.0	112.6	124.9	142.8	150.6	138.0	107.4	126.3	116.7	106.3	October "	
ኅዳር 2001	167.4	200.7	133.2	157.0	108.6	126.4	139.7	154.6	138.0	100.7	137.5	118.5	106.3	November "	
ታህሳስ 2001	166.5	197.8	134.2	157.0	112.6	129.3	139.1	156.2	138.2	99.2	141.7	119.4	106.3	December "	
ጥር 2001	164.9	195.8	133.1	155.2	114.5	129.8	136.5	154.4	142.3	98.3	141.1	118.3	106.3	January 2009	
የካቲት 2001	167.8	198.5	136.2	155.4	112.5	135.1	139.2	161.7	140.2	100.4	139.0	119.4	106.3	February "	
መጋቢት 2001	168.4	199.5	136.5	162.7	112.6	130.6	139.2	166.7	141.2	100.6	140.0	123.0	106.3	March "	
ሚያዝያ 2001	169.5	198.5	139.6	165.9	120.5	134.0	143.7	172.7	139.2	100.6	139.7	122.6	106.3	April "	
ግንቦት 2001	169.7	198.4	140.1	162.9	122.4	137.6	142.2	172.3	141.5	101.6	140.5	121.9	111.5	May "	
ሰኔ 2001	170.5	198.0	142.2	163.9	112.6	138.6	146.5	173.2	140.9	102.3	141.7	127.6	116.7	June "	
2002														2009/2010	
ሐምሌ 2001	171.3	198.4	143.4	165.2	122.4	140.0	148.6	174.3	140.3	102.3	141.0	127.6	116.7	July 2009	
ክሌሌ 2001	173.6	202.0	144.5	166.2	128.4	140.4	152.7	169.0	146.7	103.6	140.6	130.3	113.5	August "	

ሠንጠረዥ 8ሀ፡- ጠቅላላ የ ሽግግር ዋጋ መመዘኛ ሊንደክስ በሥሩ የተካተቱ ክፍሎች ሊገኙበባ ሕዝቦች ክልል መገንጠያ ታህሳስ 1999 = 100

Table 8a: General Consumer Price Index and Its Components for the Gambela Peoples Regional State December 2006 = 100

ወርና ዓመት	ጠቅላላ ሊንደክስ General Index	ጠቅላላ የምግብ ሊንደክስ Food Total	ጠቅላላ የምግብ ክፍል ሊንደክስ Non-Food Total	Non-food Consumer Price Index Components											Month and Year
				ምግብ ክፍል Beverages	ሲጃራና ትምባሆ Cigarettes and Tobacco	ላብስና መጫወያ Clothing and Footwear	የቤት ቢራይሪ ስቃዎች+ውሃና ንግድና የግል House Rent, Construction Materials, Water, and Fuel and Power	የቤት ስቃዎች የቤት ግንባታዎች የቤት ተሳታፊዎች የቤት ሠራተኛ ደመወዝ Furniture, Furnishings, Household Equipment and Operation	ሕክምና Medical Care and Health	ትራንስፖርትና ግንባታ Transport and Communication	መዝናኛና ትምህርት Recreation, Entertainment and Education	የግል ጽግራ ስቃዎች Personal Care and Effects	ሌሎች ስቃዎች Miscellaneous Goods		
ታህሳስ 1999	100.0	100.0	100.0	100.0	100.0	100.0	100.0	100.0	100.0	100.0	100.0	100.0	100.0	0.0	December 2006
ሐምሌ 1999 - ሰኔ 2000	123.7	133.8	111.2	120.8	107.8	108.3	107.6	123.5	116.4	105.9	108.4	103.5	0.0	July 2007 - June 2008	
ሐምሌ 2000 - ሰኔ 2001	193.2	226.8	151.5	193.5	134.2	140.8	145.5	173.5	130.6	112.4	138.6	114.1	0.0	July 2008 - June 2009	
2001															2008/2009
ሐምሌ 2000	197.8	248.8	134.5	161.5	122.0	131.5	124.7	170.1	122.0	114.1	113.5	111.8	0.0	July 2008	
ክሐሴ 2000	217.2	276.8	143.2	161.5	127.0	137.4	141.3	177.1	123.3	114.1	111.8	114.7	0.0	August "	
መስከረም 2001	218.0	269.0	154.5	200.4	130.6	138.1	152.2	177.9	130.2	114.1	127.8	116.6	0.0	September "	
ጥቅምት 2001	219.7	271.2	155.6	200.4	132.3	142.0	152.9	176.2	130.2	114.1	130.7	116.0	0.0	October "	
ኅዳር 2001	194.6	224.5	157.5	205.4	132.3	146.4	152.9	176.6	130.2	114.1	142.3	114.7	0.0	November "	
ታህሳስ 2001	180.9	200.8	156.1	199.0	131.2	148.5	153.0	171.2	128.9	110.1	144.2	112.1	0.0	December "	
ጥር 2001	176.3	198.9	148.1	199.0	129.9	137.2	138.2	169.9	128.3	110.1	144.1	111.8	0.0	January 2009	
የካቲት 2001	178.5	198.5	153.6	199.0	133.9	141.6	148.1	174.1	131.0	110.1	143.0	114.3	0.0	February "	
መጋቢት 2001	177.2	197.6	151.9	199.0	136.6	142.2	142.2	175.3	129.5	111.8	145.4	113.7	0.0	March "	
ሚያዝያ 2001	180.5	201.9	153.8	202.6	137.2	139.3	146.4	175.0	133.5	111.8	152.2	114.2	0.0	April "	
ግንቦት 2001	186.2	212.9	153.1	203.6	144.9	143.4	141.5	169.5	137.4	111.8	153.1	115.0	0.0	May "	
ሰኔ 2001	191.6	220.3	155.9	190.4	152.3	141.5	152.7	169.4	143.2	112.2	155.4	114.8	0.0	June "	
2002															2009/2010
ሐምሌ 2001	197.8	230.0	157.7	190.5	151.4	141.9	157.7	167.5	143.8	112.2	154.7	116.0	0.0	July 2009	
ክሐሴ 2001	199.3	230.4	160.7	198.4	150.7	141.2	162.1	166.0	151.3	114.4	163.4	116.6	0.0	August "	

ወንጠረዥ ዓሁ፡- ጠቅላላ የ ሽግግር ዋጋ መጠኛ ኢንዱክስ በሥሩ የተካተቱ ክፍሎች ለሐረሬ ክልል መገንጠት
 ታህሳስ 1999 = 100

Table 9a: General Consumer Price Index and Its Components for the Harari People Regional State
 December 2006 = 100

ወርና ዓመት	ጠቅላላ ኢንዱክስ General Index	ጠቅላላ ምግብ ኢንዱክስ Food Total	ጠቅላላ ምግብ ካልሆኑ ኢንዱክስ Non-Food Total	Non-food Consumer Price Index Components											Month and Year	
				ምግብ ካልሆኑ የኢንዱክስ ክፍሎች Beverages	ቢሻሬና ትምባሆ Cigarettes and Tobacco	ላብስና መጫጫያ Clothing and Footwear	የቤት ቢራይቲ የቤት መሥሪያ ስቃዎች+ውሃ ነጻድናሃይል House Rent, Construction Materials, Water, and Fuel and Power	የቤት ስቃዎች የቤት ግብደታዎች የቤት ተሳታፊዎች የቤት ሠራተኛ ደመወዝ Furniture, Furnishings, Household Equipment and Operation	ሕክምና Medical Care and Health	ትራንስፖርትና መገናኛ Transport and Communication	መዝናኛና ትምህርት Recreation, Entertainment and Education	የግል ገጽባናና የግል ጽግ ስቃዎች Personal Care and Effects	ሌሎች ስቃዎች Miscellaneous Goods			
ታህሳስ 1999	100.0	100.0	100.0	100.0	100.0	100.0	100.0	100.0	100.0	100.0	100.0	100.0	100.0	100.0	100.0	December 2006
ሐምሌ 1999 - ሰኔ 2000	119.1	130.4	108.5	107.9	106.4	111.0	108.8	109.1	99.7	108.8	102.4	117.1	100.7	100.7	100.7	July 2007 - June 2008
ሐምሌ 2000 - ሰኔ 2001	169.5	205.1	136.3	159.6	164.8	149.9	131.1	135.0	104.8	124.8	117.7	137.6	118.3	118.3	118.3	July 2008 - June 2009
2001																2008/2009
ሐምሌ 2000	163.7	201.0	128.8	154.2	129.8	134.3	130.6	124.1	98.7	130.4	106.9	129.5	116.6	116.6	116.6	July 2008
ክሌሌ 2000	170.1	214.3	128.9	153.3	123.6	135.7	129.6	126.5	98.0	130.4	108.1	130.7	116.0	116.0	116.0	August "
መስከረም 2001	171.6	213.9	132.0	153.5	123.6	143.8	130.9	128.2	99.3	130.4	115.2	129.1	118.8	118.8	118.8	September "
ጥቅምት 2001	173.6	213.9	136.0	156.8	123.6	145.2	139.2	132.0	106.8	131.8	114.5	134.9	118.3	118.3	118.3	October "
ኅዳር 2001	169.4	207.3	134.0	160.7	123.6	145.4	132.6	130.1	107.6	130.8	115.1	139.2	118.8	118.8	118.8	November "
ታህሳስ 2001	166.1	198.7	135.7	160.8	151.9	144.2	134.1	132.0	107.3	129.4	117.0	140.1	120.1	120.1	120.1	December "
ጥር 2001	165.4	195.9	136.8	160.8	180.7	152.7	128.6	137.9	107.6	118.7	118.7	139.0	117.3	117.3	117.3	January 2009
የካቲት 2001	169.5	202.8	138.4	160.5	188.9	155.6	131.0	136.6	106.7	118.7	118.2	140.0	118.5	118.5	118.5	February "
መጋቢት 2001	169.5	201.9	139.2	163.5	201.7	156.8	129.3	137.9	108.0	118.7	120.4	142.3	118.5	118.5	118.5	March "
ሚያዝያ 2001	170.1	202.3	140.1	163.5	201.7	157.8	129.2	142.0	107.8	118.7	123.4	141.5	118.5	118.5	118.5	April "
ግንቦት 2001	170.6	202.6	140.8	164.0	211.9	160.8	125.8	143.9	107.8	119.4	128.0	141.4	118.5	118.5	118.5	May "
ሰኔ 2001	174.7	206.5	144.9	163.9	216.0	166.4	132.8	148.9	101.7	120.1	126.3	142.8	119.3	119.3	119.3	June "
2002																2009/2010
ሐምሌ 2001	177.7	210.4	147.3	164.3	211.9	166.8	136.0	149.7	170.1	120.8	129.2	144.9	119.8	119.8	119.8	July 2009
ክሌሌ 2001	176.0	203.6	150.2	168.2	213.7	170.1	135.7	153.0	203.5	131.5	132.6	147.5	121.2	121.2	121.2	August "

ወንጠርኻ 100:- ጠቅላላ የ ሽግግር ዋጋ መመዘኛ ኢንዱስትሪ ቢሥራ የተካተቱ ክፍሎች ለአርጋጊ ክልላዊ መገንጠት ታህሳስ 1999 = 100

Table 10a: General Consumer Price Index and Its Components for the Oromiya Regional State
December 2006 = 100

ወርና ዓመት	ጠቅላላ ኢንዱስትሪ	ጠቅላላ የምግብ ኢንዱስትሪ	ጠቅላላ የምግብ ካል-ኢንዱስትሪ	Non-food Consumer Price Index Components											Month and Year
				የምግብ ካል-ኢንዱስትሪ ክፍሎች	መጠጥ	ቢዳራና ትምባዩ	ላብስና መጫጫያ	የቤት ኪራይ/የቤት መሥሪያ ስቃዎች+ውሃ/ኔዲናግድል	የቤት ስቃዎች/የቤት ግንባራዎች/የቤት ተሳታፊዎች/የቤት ሠራተኛ ደመወዝ	ሕክምና	ትራንስፖርትና ግንባራ	መዝናኛና ትምህርት	የግል ንግድና ስቃዎች	ሌሎች ስቃዎች	
	General Index	Food Total	Non-Food Total	Beverages	Cigarettes and Tobacco	Clothing and Footwear	House Rent, Construction Materials, Water, and Fuel and Power	Furniture, Furnishings, Household Equipment and Operation	Medical Care and Health	Transport and Communication	Recreation, Entertainment and Education	Personal Care and Effects	Miscellaneous Goods		
ታህሳስ 1999	100.0	100.0	100.0	100.0	100.0	100.0	100.0	100.0	100.0	100.0	100.0	100.0	100.0	100.0	December 2006
ሐምሌ 1999 - ሰኔ 2000	129.0	138.7	115.0	116.5	108.2	118.7	113.6	123.7	108.9	103.3	107.2	113.4	103.2	103.2	July 2007 - June 2008
ሐምሌ 2000 - ሰኔ 2001	179.5	202.0	146.9	182.8	143.8	152.0	142.4	155.0	134.0	106.4	126.3	149.2	118.7	118.7	July 2008 - June 2009
2001															2008/2009
ሐምሌ 2000	188.3	223.8	136.9	168.1	125.6	133.9	135.7	145.8	123.5	108.2	119.9	133.8	115.8	115.8	July 2008
ኔሐሴ 2000	190.4	224.8	140.7	177.0	134.2	138.1	138.9	148.0	127.1	108.2	123.6	140.6	116.1	116.1	August "
መስከረም 2001	190.9	226.0	140.1	174.6	133.4	139.6	136.5	148.8	128.8	108.2	124.4	139.8	120.8	120.8	September "
ጥቅምት 2001	187.9	217.9	144.5	180.7	134.6	142.5	141.8	151.9	130.8	120.9	125.9	142.0	118.8	118.8	October "
ኅዳር 2001	179.8	204.1	144.6	181.3	135.0	148.3	139.1	153.4	132.8	113.6	126.1	144.9	117.1	117.1	November "
ታህሳስ 2001	168.2	183.9	145.5	179.8	137.0	149.9	142.7	152.4	130.5	107.3	125.4	145.7	113.4	113.4	December "
ጥር 2001	171.7	188.9	146.7	189.2	141.5	151.8	142.4	153.0	131.6	102.0	124.6	147.7	114.4	114.4	January 2009
የካቲት 2001	173.6	190.0	149.9	189.2	152.3	159.3	144.3	158.8	132.6	98.4	125.0	151.2	116.4	116.4	February "
መጋቢት 2001	173.8	189.3	151.2	188.4	156.7	162.6	143.9	160.6	138.4	98.6	129.1	156.9	119.6	119.6	March "
ሚያዝያ 2001	175.5	191.1	153.0	188.8	157.1	163.9	146.9	161.0	139.1	100.7	130.8	160.2	121.2	121.2	April "
ግንቦት 2001	174.9	189.4	153.9	186.6	158.1	165.1	147.9	162.4	143.3	103.0	129.1	159.6	125.7	125.7	May "
ሰኔ 2001	178.8	194.5	156.1	190.2	160.1	169.5	148.1	163.9	149.6	108.3	132.0	167.4	125.1	125.1	June "
2002															2009/2010
ሐምሌ 2001	178.8	192.7	158.6	189.5	161.4	171.7	150.4	169.1	147.1	111.2	137.3	170.9	127.9	127.9	July 2009
ኔሐሴ 2001	180.3	192.2	163.1	192.5	159.2	178.5	156.0	172.0	147.8	112.4	138.6	172.9	133.5	133.5	August "

ሠንጠረዥ 11ሀ፡ ጠቅላላ የ ሽግግሮች ዋጋ መመዘኛ ኢንዱክስ በሥሩ የተካተቱ ክፍሎች ለደብዳቤ ክልላዊ መገንጠያ
 ታህሳስ 1999 = 100

Table 11a: General Consumer Price Index and Its Components for the SNNP Regional State
 December 2006= 100

ወርና ዓመት	ጠቅላላ ኢንዱክስ General Index	ጠቅላላ የምግብ ኢንዱክስ Food Total	ጠቅላላ የምግብ ካልሆኑ ኢንዱክስ Non-Food Total	Non-food Consumer Price Index Components											Month and Year	
				ምግብ ካልሆኑ የኢንዱክስ ክፍሎች Beverages	ቢሻራና ትምባሆ Cigarettes and Tobacco	ላብሳና መጫጫያ Clothing and Footwear	የቤት ቢራይቲ የቤት መሥሪያ ስቃዎች+ውሃ ነጻድናሃይል House Rent, Construction Materials, Water, and Fuel and Power	የቤት ስቃዎች የቤት ግብዢያዎች የቤት ተሳታፊዎች የቤት ሠራተኛ ደመወዝ Furniture, Furnishings, Household Equipment and Operation	ሕክምና Medical Care and Health	ትራንስፖርትና ግንኙነት Transport and Communication	መዝናኛና ትምህርት Recreation, Entertainment and Education	የግል ንጽባናና የግል ቋጫ ስቃዎች Personal Care and Effects	ሌሎች ስቃዎች Miscellaneous Goods			
ታህሳስ 1999	100.0	100.0	100.0	100.0	100.0	100.0	100.0	100.0	100.0	100.0	100.0	100.0	100.0	100.0	100.0	December 2006
ሐምሌ 1999 - ሰኔ 2000	125.6	131.1	118.0	118.6	104.0	117.2	117.2	134.3	109.2	124.5	106.8	106.9	106.1	106.1	106.1	July 2007 - June 2008
ሐምሌ 2000 - ሰኔ 2001	173.9	189.3	152.7	178.0	133.9	155.9	150.4	175.6	119.3	136.1	122.7	128.3	114.3	114.3	114.3	July 2008 - June 2009
2001																2008/2009
ሐምሌ 2000	184.1	214.7	141.9	171.8	126.2	136.8	141.3	159.7	112.1	139.6	110.0	123.0	108.0	108.0	108.0	July 2008
ክሌሌ 2000	185.3	214.0	145.9	171.8	128.0	139.4	147.5	165.4	112.0	139.6	111.8	122.5	112.6	112.6	112.6	August "
መስከረም 2001	187.5	215.4	149.2	180.3	127.6	143.8	150.3	167.6	116.8	139.6	112.5	123.7	110.4	110.4	110.4	September "
ጥቅምት 2001	181.1	201.6	152.8	182.7	128.2	147.0	155.1	170.8	115.9	147.7	114.9	124.8	110.3	110.3	110.3	October "
ኅዳር 2001	172.3	186.0	153.4	178.0	130.8	151.6	154.8	171.3	116.4	143.8	120.3	129.0	112.6	112.6	112.6	November "
ታህሳስ 2001	164.9	173.5	153.1	177.3	131.5	156.6	152.0	174.5	116.6	136.3	121.4	126.6	112.6	112.6	112.6	December "
ጥር 2001	164.9	173.1	153.5	175.4	130.1	159.1	152.4	172.9	115.8	131.3	127.4	127.0	112.6	112.6	112.6	January 2009
የካቲት 2001	166.2	174.9	154.2	178.4	136.8	164.1	148.7	179.3	122.1	128.7	129.4	129.8	117.2	117.2	117.2	February "
መጋቢት 2001	166.5	175.4	154.2	178.8	136.1	163.8	148.4	179.4	123.6	129.4	129.3	130.7	118.3	118.3	118.3	March "
ሚያዝያ 2001	170.3	180.2	156.5	179.8	140.7	166.9	149.9	188.4	124.0	129.0	130.8	132.7	117.2	117.2	117.2	April "
ግንቦት 2001	171.1	180.2	158.6	179.3	146.1	169.4	152.4	189.4	128.7	132.6	132.5	135.4	118.3	118.3	118.3	May "
ሰኔ 2001	172.6	182.1	159.5	182.2	144.4	172.2	152.4	188.5	127.8	136.1	132.5	134.4	120.8	120.8	120.8	June "
2002																2009/2010
ሐምሌ 2001	174.6	182.6	163.6	186.9	144.9	175.4	157.2	193.0	131.5	140.6	136.1	135.9	120.3	120.3	120.3	July 2009
ክሌሌ 2001	177.0	184.5	166.6	187.1	146.3	177.3	161.9	197.5	127.5	141.5	137.1	140.3	122.1	122.1	122.1	August "

ወንጠረዥ 12ሁ-ጠቅላላ የ ሽግግር ዋጋ መመዘኛ ኢንዱስትሪ ቢሥሩ የተካተቱ ክፍሎች ለሰግሌ ክልል መገንባት
 ታህሳስ 1999 = 100

Table 12a: General Consumer Price Index and Its Components for the Somali Regional State
 December 2006 = 100

ወርና ዓመት	ጠቅላላ ኢንዱስትሪ	ጠቅላላ የምግብ ኢንዱስትሪ	ጠቅላላ የምግብ ክፍል ኢንዱስትሪ	Non-food Consumer Price Index Components											Month and Year
				የምግብ ክፍል	ቤሽሬና ትምባሆ	ላብስና መጓጊያ	የቤት ቢራይቲ የቤት መሥሪያ ስቃዎች+ውሃ ነጻድናሃይል	የቤት ስቃዎች የቤት ግንባታና የቤት ተሳታፊዎች ደመወዝ	ሕክምና	ትራንስፖርትና መገናኛ	መዝናኛና ትምህርት	የግል ጽግራ ስቃዎች	ሌሎች ስቃዎች		
General Index	Food Total	Non-Food Total	Beverages	Cigarettes and Tobacco	Clothing and Footwear	House Rent, Construction Materials, Water, and Fuel and Power	Furniture, Furnishings, Household Equipment and Operation	Medical Care and Health	Transport and Communication	Recreation, Entertainment and Education	Personal Care and Effects	Miscellaneous Goods			
ታህሳስ 1999	100.0	100.0	100.0	100.0	100.0	100.0	100.0	100.0	100.0	100.0	100.0	100.0	100.0	100.0	December 2006
ሐምሌ 1999 - ሰኔ 2000	118.5	124.6	108.5	105.8	109.2	111.4	107.9	107.2	133.1	103.5	100.8	99.7	100.8	100.8	July 2007 - June 2008
ሐምሌ 2000 - ሰኔ 2001	170.8	195.9	129.8	134.2	123.1	129.1	128.4	149.6	144.5	115.8	107.8	118.5	131.3	131.3	July 2008 - June 2009
2001															2008/2009
ሐምሌ 2000	167.8	198.2	118.3	110.0	113.6	121.0	116.0	130.9	142.1	112.9	101.5	108.1	113.3	113.3	July 2008
ክሐሴ 2000	174.6	208.6	119.2	127.0	116.1	122.6	114.9	131.4	151.4	112.9	101.7	110.0	113.3	113.3	August "
መስከረም 2001	178.2	212.0	123.1	133.9	121.3	121.7	119.1	141.0	158.5	112.9	101.7	109.7	134.1	134.1	September "
ጥቅምት 2001	175.1	202.5	130.4	133.2	126.5	125.6	132.7	140.6	163.1	117.9	105.6	113.8	134.1	134.1	October "
ኅዳር 2001	170.1	193.3	132.3	133.3	123.1	127.1	136.7	141.2	163.7	117.9	108.6	116.1	134.1	134.1	November "
ታህሳስ 2001	154.8	170.6	129.1	133.2	123.1	127.3	128.3	145.0	152.4	113.7	109.3	119.3	134.1	134.1	December "
ጥር 2001	164.3	185.4	130.0	133.2	123.1	126.8	131.0	146.6	141.9	116.0	108.1	119.1	134.1	134.1	January 2009
ፀሐይ 2001	169.9	194.0	130.7	133.2	123.1	132.1	127.6	156.2	125.1	117.1	105.6	124.2	135.8	135.8	February "
መጋቢት 2001	169.3	191.1	133.8	142.1	123.1	135.5	131.1	162.4	123.6	117.1	107.5	123.1	135.8	135.8	March "
ሚያዝያ 2001	171.9	194.6	135.0	146.4	123.1	133.9	133.4	164.2	129.2	117.1	107.7	127.9	135.8	135.8	April "
ግንቦት 2001	173.5	196.3	136.2	142.9	123.1	136.5	134.0	167.2	131.4	117.1	114.9	125.2	135.8	135.8	May "
ሰኔ 2001	179.5	203.8	139.8	142.4	138.5	138.6	136.1	168.9	151.9	117.3	121.4	125.7	135.8	135.8	June "
2002															2009/2010
ሐምሌ 2001	178.8	202.3	140.6	142.8	156.1	139.5	133.3	169.7	160.8	117.6	118.8	125.6	135.8	135.8	July 2009
ክሐሴ 2001	176.8	197.4	143.1	142.8	156.1	143.6	137.9	165.5	156.3	119.4	128.4	126.1	135.8	135.8	August "

ሠንጠረዥ 13ሀ፡- ጠቅላላ የ ሽግግር ዋጋ መመዘኛ ሊንደክስ በሥሩ የተከተቱ ክፍሎች ለትግራይ ክልል መገንጠት
 ታህሳስ 1999 = 100

Table 13a: General Consumer Price Index and Its Components for the Tigray Regional State
 December 2006 = 100

ወርና ዓመት	ጠቅላላ ሊንደክስ General Index	ጠቅላላ ምግብ ሊንደክስ Food Total	ጠቅላላ ምግብ ካልሆኑ ሊንደክስ Non-Food Total	ምግብ ካልሆኑ የሊንደክስ ክፍሎች Non-food Consumer Price Index Components											Month and Year	
				መጠጥ Beverages	ሲጃራና ትምባሆ Cigarettes and Tobacco	ላብስና መጫጫያ Clothing and Footwear	የቤት ቢራይቲ የቤት መሥሪያ ስቃዎች+ውሃ ነጻድናሃይል House Rent, Construction Materials, Water, and Fuel and Power	የቤት ስቃዎች የቤት ግንባታዎች የቤት ተሳታፊዎች የቤት ሠራተኛ ደመወዝ Furniture, Furnishings, Household Equipment and Operation	ሕክምና Medical Care and Health	ትራንስፖርትና ግንኙነት Transport and Communication	መዝናኛና ትምህርት Recreation, Entertainment and Education	የግል ጽግራ ስቃዎች Personal Care and Effects	ሌሎች ስቃዎች Miscellaneous Goods			
ታህሳስ 1999	100.0	100.0	100.0	100.0	100.0	100.0	100.0	100.0	100.0	100.0	100.0	100.0	100.0	100.0	100.0	December 2006
ሐምሌ 1999 - ሰኔ 2000	130.1	143.4	111.7	112.2	101.6	119.7	107.8	120.2	104.7	99.1	105.0	105.8	116.0			July 2007 - June 2008
ሐምሌ 2000 - ሰኔ 2001	183.0	214.8	139.4	188.8	117.4	161.4	131.1	151.8	106.4	101.4	113.3	126.5	134.5			July 2008 - June 2009
2001																2008/2009
ሐምሌ 2000	187.5	230.2	128.7	190.7	109.1	138.7	123.4	139.9	101.0	105.6	108.3	114.8	127.2			July 2008
ነሐሴ 2000	192.7	237.7	130.9	190.1	108.9	144.1	124.2	146.8	104.5	105.6	110.6	109.8	128.5			August "
መስከረም 2001	199.3	244.3	137.4	186.8	117.0	154.1	132.6	146.9	107.2	105.8	113.7	109.3	143.6			September "
ጥቅምት 2001	198.5	241.1	140.0	183.9	112.1	155.5	135.8	151.9	110.4	116.3	111.7	109.4	139.0			October "
ኅዳር 2001	187.8	223.4	138.9	179.2	109.6	160.9	130.7	150.8	100.5	112.1	114.4	115.6	140.3			November "
ታህሳስ 2001	177.8	206.8	138.0	182.8	114.2	159.9	132.1	149.0	101.2	100.9	113.8	107.6	139.3			December "
ጥር 2001	174.3	200.8	137.8	182.7	113.8	160.4	132.4	151.1	104.9	95.1	112.0	109.3	132.3			January 2009
የካቲት 2001	174.8	200.2	140.0	184.9	113.0	168.5	129.6	151.0	108.3	94.7	110.2	136.4	126.2			February "
መጋቢት 2001	176.9	203.3	140.6	189.1	111.9	169.1	129.2	151.6	107.6	95.2	111.3	138.2	132.3			March "
ሚያዝያ 2001	178.0	203.7	142.8	184.5	121.8	170.6	132.5	154.2	110.5	94.2	114.4	145.4	128.5			April "
ግንቦት 2001	173.1	191.6	147.7	205.7	131.4	175.7	134.8	163.2	110.1	95.5	117.4	154.3	135.9			May "
ሰኔ 2001	175.8	194.3	150.3	205.7	146.5	179.0	135.7	164.9	110.2	96.3	122.2	167.2	141.0			June "
2002																2009/2010
ሐምሌ 2001	180.2	198.2	155.5	196.5	161.8	188.0	140.8	167.1	111.2	108.7	124.3	171.7	141.0			July 2009
ነሐሴ 2001	182.7	200.2	158.5	203.1	174.5	191.9	141.9	170.5	115.7	110.6	130.1	182.6	142.9			August "

ሠንጠረዥ 2ሀ፡- የምግብ ዋጋ መመዘኛ ሊንደክስ ግጥም ባለገር አቀፍ እና በክልሎች ደረጃ
 ታህሳስ 1999 = 100

Table 2b: Summary of Consumer Price Indices of Food at Country and Regional Levels
 December 2006=100

ወርና ዓመት	Reporting Level												Month and Year
	Eth.	A.A.	Afar	Amhara	B.Gumuz	D.Dawa	Gambela	Harari	Oromia	SNNP	Somalia	Tigray	
ታህሳስ 1999	100.0	100.0	100.0	100.0	100.0	100.0	100.0	100.0	100.0	100.0	100.0	100.0	December 2006
ሐምሌ 1999 - ሰኔ 2000	137.2	134.8	136.1	139.6	148.2	135.4	133.8	130.4	138.7	131.1	124.6	143.4	July 2007 - June 2008
ሐምሌ 2000 - ሰኔ 2001	198.0	190.7	189.5	198.7	226.1	199.5	226.8	205.1	202.0	189.3	195.9	214.8	July 2008 - June 2009
2001													2008/2009
ሐምሌ 2000	216.6	195.2	198.7	216.5	246.8	192.8	248.8	201.0	223.8	214.7	198.2	230.2	July 2008
ክሐረ 2000	218.5	197.5	200.6	218.0	262.9	204.3	276.8	214.3	224.8	214.0	208.6	237.7	August "
መስከረም 2001	220.6	198.8	201.0	221.4	272.8	204.4	269.0	213.9	226.0	215.4	212.0	244.3	September "
ጥቅምት 2001	214.3	196.8	200.0	220.9	246.6	205.4	271.2	213.9	217.9	201.6	202.5	241.1	October "
ኅዳር 2001	202.2	194.8	192.5	212.2	237.8	200.7	224.5	207.3	204.1	186.0	193.3	223.4	November "
ታህሳስ 2001	184.3	184.8	180.2	190.7	215.0	197.8	200.8	198.7	183.9	173.5	170.6	206.8	December "
ጥር 2001	185.3	181.9	180.1	187.8	199.4	195.8	198.9	195.9	188.9	173.1	185.4	200.8	January 2009
የካቲት 2000	186.1	183.4	182.1	185.9	202.2	198.5	198.5	202.8	190.0	174.9	194.0	200.2	February "
መጋቢት 2001	185.9	186.0	181.5	184.0	206.8	199.5	197.6	201.9	189.3	175.4	191.1	203.3	March "
ጊደር 2001	187.8	189.4	185.0	184.5	206.1	198.5	201.9	202.3	191.1	180.2	194.6	203.7	April "
ግንቦት 2001	185.6	191.0	185.3	180.8	205.1	198.4	212.9	202.6	189.4	180.2	196.3	191.6	May "
ሰኔ 2001	188.6	189.3	187.2	181.9	211.2	198.0	220.3	206.5	194.5	182.1	203.8	194.3	June "
2002													2009/2010
ሐምሌ 2001	189.8	191.8	188.4	187.4	225.5	198.4	230.0	210.4	192.7	182.6	202.3	198.2	July 2009
ክሐረ 2001	190.5	193.5	195.1	190.0	225.8	202.0	230.4	203.6	192.2	184.5	197.4	200.2	August "

ሠንጠረዥ 3 ለ:- ጠቅላላ የሽግግር ዋጋ መመዘኛ ኢንዱክስ በሥሩ የተከተሉ ክፍሎች ለአዲስ አበባ ከተማ መስተዳድር
 ታህሳስ 1999 = 100

Table 3b: Consumer Price Index of Total Food and Its Components for Addis Ababa City Administration
 December 2006 = 100

ወርና ዓመት	ጠቅላላ ምግብ	አህል	በቤት ውስጥ የተወለዱ የምግብ ዓይነቶች			FOOD TAKEN AT HOME							ከቤት ውጪ የተወለዱ ምግቦች	Month and Year		
			ጥራጥራ	ዳቦና ሌሎች የተዘጋጁ ምግቦች	ሥጋ	ወተት+ ዓይብና እንቁላል	ዘይትና ቅባቶች	እትክልትና ፍራፍሬ	ትመግ ቅመም	ደጎችና ሌሎች ሥራሥርቶች	ያልተቆላ ቡናና ካይ ቅጠል	ሌሎች ምግቦች			የግብደታ አገልግሎት	
ታህሳስ 1999	100.0	100.0	100.0	100.0	100.0	100.0	100.0	100.0	100.0	100.0	100.0	100.0	100.0	100.0	100.0	December 2006
ሐምሌ 1999 - ሰኔ 2000	134.8	122.2	134.5	134.6	118.9	129.4	145.3	134.2	320.3	206.6	128.5	105.9	119.7	120.6	120.6	July 2007 - June 2008
ሐምሌ 2000 - ሰኔ 2001	190.7	213.2	192.8	217.4	153.7	182.2	166.2	183.0	252.2	288.8	137.3	159.8	139.7	156.1	156.1	July 2008 - June 2009
2001																2008/2009
ሐምሌ 2000	195.2	213.4	197.9	215.3	152.4	168.1	175.9	161.4	394.8	324.2	141.3	136.4	139.6	146.8	146.8	July 2008
ክሌሌ 2000	197.5	220.4	201.6	212.7	147.2	167.8	170.9	207.6	388.0	233.7	138.1	144.3	141.3	147.4	147.4	August "
መስከረም 2001	198.8	226.6	204.3	212.8	159.7	181.9	172.2	195.5	347.8	242.9	139.5	143.7	138.5	149.1	149.1	September "
ጥቅምት 2001	196.8	231.8	205.1	218.3	157.6	183.1	170.9	160.7	313.4	251.6	140.5	134.5	141.1	154.0	154.0	October "
ኅዳር 2001	194.8	233.4	200.6	217.3	156.0	181.4	163.5	153.3	277.4	313.2	136.0	137.2	139.2	154.8	154.8	November "
ታህሳስ 2001	184.8	204.8	191.1	214.2	150.0	179.7	161.5	154.5	271.6	263.7	133.9	149.0	137.2	153.7	153.7	December "
ጥር 2001	181.9	202.0	188.8	214.3	148.9	182.6	159.5	156.8	209.5	264.9	134.1	168.4	137.0	154.3	154.3	January 2009
የካቲት 2001	183.4	203.8	179.9	216.8	150.2	180.7	155.7	167.3	195.5	312.4	136.5	172.4	139.0	157.0	157.0	February "
መጋቢት 2001	186.0	204.0	188.4	221.0	150.7	184.4	156.3	190.7	175.5	328.0	137.3	176.2	141.2	157.5	157.5	March "
ግብርንታረኛ 2001	189.4	206.3	187.5	225.4	154.7	182.3	168.1	211.3	157.4	321.8	135.1	180.1	142.1	161.3	161.3	April "
ግንቦት 2001	191.0	207.5	186.0	217.3	157.5	191.8	169.4	229.5	149.1	318.0	138.0	187.7	140.1	169.0	169.0	May "
ሰኔ 2001	189.3	204.7	182.5	223.8	159.1	203.1	170.3	207.6	146.7	290.9	137.6	188.1	140.1	168.1	168.1	June "
2002																2009/2010
ሐምሌ 2001	191.8	210.6	184.8	233.0	163.0	211.6	165.7	183.9	163.4	255.3	137.2	189.5	149.0	172.8	172.8	July 2009
ክሌሌ 2001	193.5	210.9	187.5	233.1	163.0	206.9	164.2	199.0	156.1	242.2	176.4	176.9	148.5	177.4	177.4	August "

ወንጠረኝ 44፡- ጠቅላላ ምግብና የምግብ ክፍሎች የ ሽግግር ዋጋ መመዘኛ ሊገደክስ ለአፋር ክልል መገንጠት ታህሳስ 1999 = 100

Table 4b: Consumer Price index of Total Food and Its Components for the Afar Regional State

December 2006 = 100

ወርና ዓመት	ጠቅላላ ምግብ	አህል	በቤት ውስጥ የተወለዱ የምግብ ዓይነቶች			FOOD TAKEN AT HOME							ከቤት ውጪ የተወለዱ ምግቦች	Month and Year		
			ጥራጥራ	ዳቦና ሌሎች የተዘጋጁ ምግቦች	ሥጋ	ወተት+ ዓይብና እንቁላል	ዘይትና ቅባቶች	እትክልትና ፍራፍራ	ቅመግ ቅመም	ደገችና ሌሎች ሥራሥርቶች	ያልተቆላ ቡናና ሻይ ቅጠል	ሌሎች ምግቦች			የግንቢጫ አገልግሎት	
ታህሳስ 1999	100.0	100.0	100.0	100.0	100.0	100.0	100.0	100.0	100.0	100.0	100.0	100.0	100.0	100.0	100.0	December 2006
ሐምሌ 1999 - ሰኔ 2000	136.1	124.6	147.1	127.1	140.1	139.8	151.6	138.8	341.4	151.8	105.8	94.9	101.8	121.1	121.1	July 2007 - June 2008
ሐምሌ 2000 - ሰኔ 2001	189.5	206.5	205.3	229.3	178.5	180.0	174.1	192.5	275.7	233.8	143.2	137.1	119.7	170.3	170.3	July 2008 - June 2009
2001																2008/2009
ሐምሌ 2000	198.7	222.3	218.7	219.2	170.1	196.4	188.7	154.7	452.6	242.5	130.2	109.2	113.1	162.1	162.1	July 2008
ክሌሌ 2000	200.6	235.8	224.3	223.0	175.8	178.1	184.3	196.4	389.1	242.5	138.3	118.2	116.5	165.4	165.4	August "
መስከረም 2001	201.0	237.1	229.5	224.7	177.4	176.4	174.0	194.0	389.7	225.1	140.2	122.9	128.2	167.8	167.8	September "
ጥቅምት 2001	200.0	240.0	233.0	229.0	172.7	176.6	172.8	182.7	336.9	228.3	140.1	124.9	122.6	170.0	170.0	October "
ኅዳር 2001	192.5	219.7	230.5	223.4	168.4	177.5	171.7	171.9	319.0	232.9	140.8	124.3	120.4	167.9	167.9	November "
ታህሳስ 2001	180.2	193.5	194.0	215.7	157.5	176.5	170.0	160.5	282.7	223.7	137.0	123.1	120.4	171.1	171.1	December "
ጥር 2001	180.1	190.1	197.1	212.8	166.8	182.7	169.4	159.7	246.1	223.3	138.8	135.6	120.4	168.9	168.9	January 2009
የኮቲት 2001	182.1	190.1	190.2	230.5	165.7	186.4	174.2	173.6	210.8	228.3	137.4	149.9	119.1	172.1	172.1	February "
መጋቢት 2001	181.5	188.1	188.4	241.6	167.9	177.0	175.9	195.4	203.9	232.4	136.9	149.3	119.1	173.1	173.1	March "
ግድሥት 2001	185.0	186.4	188.6	243.0	210.1	177.9	173.5	202.3	169.3	241.6	156.4	163.6	119.1	174.7	174.7	April "
ግንቦት 2001	185.3	186.6	185.7	244.5	203.2	177.7	167.6	262.3	155.3	246.1	154.4	161.2	119.1	171.4	171.4	May "
ሰኔ 2001	187.2	188.3	183.5	244.2	206.5	177.3	166.7	256.3	153.2	238.8	168.0	163.5	119.1	178.7	178.7	June "
2002																2009/2010
ሐምሌ 2001	188.4	193.2	185.4	241.9	193.1	176.5	169.2	237.4	171.6	242.5	171.1	174.0	119.1	178.3	178.3	July 2009
ክሌሌ 2001	195.1	200.2	192.4	251.9	191.7	204.2	166.9	222.0	159.7	221.9	168.3	177.6	119.1	179.5	179.5	August "

ወንጠረዥ 5A:- ጠቅላላ የምግብ ክፍሎች የሽግግር ዋጋ መመዘኛ ኢንዱስትሪ ለላግራ ክልል መገንጠያ
 ታህሳስ 1999 = 100

Table 5b: Consumer Price Index of Total Food and Its Components for the Amhara Regional State
 December 2006 = 100

ወርና ዓመት	ጠቅላላ የምግብ	አህል	በቤት ውስጥ የተወሰዱ የምግብ ዓይነቶች			FOOD TAKEN AT HOME						ክፍት ውጪ የተወሰዱ የምግቦች	ወርና ዓመት		
			ጥራጥራ	ዳቦና ሌሎች የተዘጋጁ የምግቦች	ሥጋ	ወተት+ ዓይብና እንቁላል	ዘይትና ቅባቶች	እትክልትና ፍራፍራ	ቅመግ ቅመም	ደገችና ሌሎች ሥራሥርቶች	ያልተቆላ ቡናና ቫይ ቅጠል			ሌሎች የምግቦች	የግንብራጫ አገልግሎት
ታህሳስ 1999	100.0	100.0	100.0	100.0	100.0	100.0	100.0	100.0	100.0	100.0	100.0	100.0	100.0	100.0	December 2006
ሐምሌ 1999 - ሰኔ 2000	139.6	137.6	117.9	131.0	117.8	125.6	161.8	129.4	297.0	122.1	125.2	105.8	106.7	121.4	July 2007 - June 2008
ሐምሌ 2000 - ሰኔ 2001	198.7	231.9	163.4	215.5	144.6	178.9	183.7	160.6	248.5	188.8	140.1	183.2	121.2	158.7	July 2008 - June 2009
2001															2008/2009
ሐምሌ 2000	216.5	262.0	165.8	201.9	131.4	158.7	188.8	133.2	386.8	180.5	135.7	151.4	112.4	145.5	July 2008
ክሌሌ 2000	218.0	261.0	172.1	207.9	132.9	178.0	191.9	158.4	376.3	185.6	137.4	155.6	111.8	149.0	August "
መስከረም 2001	221.4	269.1	172.3	210.3	141.8	174.5	189.8	154.6	346.5	184.5	137.2	157.2	115.9	157.1	September "
ጥቅምት 2001	220.9	271.0	172.9	218.1	142.2	173.6	189.7	135.7	323.6	176.4	142.8	161.0	124.9	156.3	October "
ኅዳር 2001	212.2	255.6	171.3	217.9	140.8	174.3	185.5	134.2	297.1	174.1	142.3	175.2	123.5	158.0	November "
ታህሳስ 2001	190.7	216.9	162.4	213.5	141.0	173.2	178.2	134.8	256.5	169.9	139.8	179.7	123.4	159.7	December "
ጥር 2001	187.8	215.2	160.5	214.6	142.5	175.0	178.6	138.2	214.2	165.8	140.7	196.2	120.0	161.1	January 2009
የኮቲት 2001	185.9	210.1	161.7	219.4	144.1	183.7	179.6	167.7	184.2	207.5	140.0	203.5	121.6	160.8	February "
መገቢት 2001	184.0	208.7	153.0	220.8	148.4	184.9	177.9	179.6	164.3	208.0	139.7	203.1	124.0	164.2	March "
ጊዳር 2001	184.5	208.4	155.9	219.0	167.9	187.1	180.9	184.1	148.1	208.0	140.7	204.9	122.6	162.9	April "
ግንቦት 2001	180.8	201.3	156.8	222.0	149.1	188.5	183.5	202.7	144.3	208.6	140.1	206.0	125.2	163.8	May "
ሰኔ 2001	181.9	203.4	156.5	220.2	153.0	195.6	179.6	204.1	139.9	197.1	144.4	204.1	128.9	165.8	June "
2002															2009/2010
ሐምሌ 2001	187.4	212.4	157.0	225.0	151.2	193.9	179.0	180.6	165.9	197.7	146.1	206.4	133.6	168.5	July 2009
ክሌሌ 2001	190.0	214.3	163.2	222.3	152.4	197.5	180.5	182.5	159.9	223.0	150.3	205.3	143.2	170.2	August "

ወንጠረዥ ልሳ፡- ጠቅላላ የምግብ ዋጋዎች የ ሸግጃቸው ዋጋ መመዘኛ እንደሆነ በሰነድ ለገንጠል የምግብ ክልላዊ መገንጠት ታህሳስ 1999 = 100

Table 6b: Consumer Price Index of Total Food and Its Components for the Benishangul Gumuz Regional state December 2006 = 100

ወርና ዓመት	ጠቅላላ የምግብ	እህል	በቤት ውስጥ የተወለዱ የምግብ ዓይነቶች			FOOD TAKEN AT HOME							ከቤት ውጭ የተወለዱ የምግብ	Month and Year		
			ጥራጥረ	ዳቦና ሌሎች የተዘጋጁ የምግብ	ሥጋ	ወተት፣ ዓይብና እንቁላል	ዘይትና ቅባቶች	እትክልትና ፍራፍሬ	ትመግ ቅመም	ደንችና ሌሎች ሥራሥርቶች	ያልተቆላ ቤናና ዝይ ቅጠል	ሌሎች የምግብ			የግብረጫ አገልግሎት	
ታህሳስ 1999	100.0	100.0	100.0	100.0	100.0	100.0	100.0	100.0	100.0	100.0	100.0	100.0	100.0	100.0	100.0	December 2006
ሐምሌ 1999 - ሰኔ 2000	148.2	160.9	112.5	129.7	131.1	108.5	142.4	116.6	366.2	127.0	128.5	105.1	111.1	117.8	117.8	July 2007 - June 2008
ሐምሌ 2000 - ሰኔ 2001	226.1	297.3	158.6	222.6	172.4	158.4	176.9	149.0	332.9	200.3	134.5	166.3	126.0	150.8	150.8	July 2008 - June 2009
2001																2008/2009
ሐምሌ 2000	246.8	344.0	156.3	185.0	167.2	142.6	171.8	111.4	478.5	179.0	142.2	140.9	126.9	143.3	143.3	July 2008
ክሌሌ 2000	262.9	375.6	173.4	201.0	169.3	149.6	168.1	130.3	457.4	213.5	138.9	142.8	127.1	143.8	143.8	August "
መስከረም 2001	272.8	392.5	177.9	208.8	179.3	150.7	171.2	136.1	461.2	229.9	144.1	148.7	131.7	143.4	143.4	September "
ጥቅምት 2001	246.6	341.4	158.8	219.1	181.7	153.2	169.2	135.4	401.7	214.3	139.9	146.7	135.9	142.3	142.3	October "
ኅዳር 2001	237.8	326.7	142.5	224.1	175.0	155.6	171.5	132.2	381.3	209.1	136.7	155.0	129.4	143.1	143.1	November "
ታህሳስ 2001	215.0	272.5	141.8	234.8	173.3	159.2	192.5	174.0	289.2	205.6	130.8	169.8	122.2	152.2	152.2	December "
ጥር 2001	199.4	243.7	144.2	231.2	170.7	159.9	172.4	152.7	284.7	213.9	122.9	175.5	113.5	151.6	151.6	January 2009
የቀቲት 2001	202.2	247.4	148.8	231.3	171.1	163.4	170.9	156.0	288.0	212.1	125.5	178.6	114.8	154.1	154.1	February "
መጋቢት 2001	206.8	255.9	140.1	234.5	172.2	165.9	167.8	166.7	289.6	174.8	130.7	180.3	124.6	158.6	158.6	March "
ጊዮንዳ 2001	206.1	253.8	168.9	244.5	168.6	164.7	190.0	161.6	239.9	167.3	129.6	186.4	130.2	155.8	155.8	April "
ግንቦት 2001	205.1	254.0	170.2	242.8	168.4	164.6	193.2	160.5	196.6	172.7	132.9	183.4	126.0	159.5	159.5	May "
ሰኔ 2001	211.2	260.0	179.7	214.2	172.5	172.1	184.4	171.8	226.7	211.6	139.3	187.7	129.2	162.3	162.3	June "
2002																2009/2010
ሐምሌ 2001	225.5	290.9	183.7	224.2	177.6	179.5	177.4	160.8	212.7	198.2	146.7	187.1	129.9	171.2	171.2	July 2009
ክሌሌ 2001	225.8	294.6	176.8	228.7	184.1	182.0	178.8	132.8	212.3	182.1	155.0	187.6	145.4	168.3	168.3	August "

ወንጠረዥ 7ሀ፡፡ ጠቅላላ የምግብ ወጪ የግንዛቤ ስርዓት የግንዛቤ ስርዓት የግንዛቤ ስርዓት የግንዛቤ ስርዓት
 ታህሳስ 1999 = 100

Table 7b: Consumer Price Index of Total Food and Its Components for the Dire Dawa Administrative Council
 December 2006 = 100

ወርና ዓመት	ጠቅላላ ምግብ	እህል	በቤት ውስጥ የተወለዱ የምግብ ዓይነቶች					FOOD TAKEN AT HOME						ከቤት ውጭ የተወለዱ ምግቦች	Month and Year	
			ጥራጥረ	ዳቦና ሌሎች የተዘጋጁ ምግቦች	ሥጋ	ወተት፣ ዓይብና እንቁሳል	ዘይትና ቅባቶች	እትክልትና ፍራፍሬ	ትመግ ቅመም	ደንችና ሌሎች ሥራሥርቶች	ያልተቆላ ቤናና ዝይ ቅጠል	ሌሎች ምግቦች	የግንብራ ለገልገሎት			
ታህሳስ 1999	100.0	100.0	100.0	100.0	100.0	100.0	100.0	100.0	100.0	100.0	100.0	100.0	100.0	100.0	100.0	December 2006
ሐምሌ 1999 - ሰኔ 2000	135.4	140.9	148.3	127.9	107.8	118.5	151.7	132.9	353.5	167.6	133.9	95.4	90.7	114.7	114.7	July 2007 - June 2008
ሐምሌ 2000 - ሰኔ 2001	199.5	240.3	197.8	236.8	130.0	177.9	183.5	183.0	298.6	221.9	161.8	114.0	95.5	176.8	176.8	July 2008 - June 2009
2000																2008/2009
ሐምሌ 2000	192.8	240.9	200.4	191.3	130.5	157.7	197.1	165.6	453.3	278.2	150.5	110.4	95.9	167.1	167.1	July 2008
ክሌሌ 2000	204.3	262.0	209.4	205.7	127.9	164.0	194.2	171.8	431.3	201.0	150.2	112.2	95.9	217.1	217.1	August "
መስከረም 2001	204.4	262.4	210.2	232.1	127.8	163.3	186.2	176.2	409.0	198.8	151.1	112.5	95.9	171.2	171.2	September "
ጥቅምት 2001	205.4	265.4	209.4	240.2	127.8	172.2	185.4	171.7	352.0	200.4	152.8	112.1	95.3	169.9	169.9	October "
ኅዳር 2001	200.7	244.8	208.9	242.3	131.1	178.7	180.7	157.1	325.4	205.3	163.3	112.5	95.3	170.0	170.0	November "
ታህሳስ 2001	197.8	233.8	199.6	246.0	128.4	176.5	176.7	153.3	341.9	208.8	173.2	114.0	95.3	154.7	154.7	December "
ጥር 2001	195.8	228.0	187.5	243.9	130.9	176.6	177.5	181.4	271.3	236.2	168.9	114.5	95.3	161.1	161.1	January 2009
የቀንረት 2001	198.5	229.4	186.1	248.7	131.4	176.6	177.5	185.0	271.3	254.1	168.3	114.5	95.3	174.1	174.1	February "
መጋቢት 2001	199.5	228.8	191.0	252.3	124.3	187.7	187.2	194.4	217.5	245.2	170.7	115.3	95.3	174.2	174.2	March "
ጊዮርጊስ 2001	198.5	229.6	190.9	243.5	129.0	190.3	183.4	191.2	179.6	227.6	172.8	116.0	95.3	188.5	188.5	April "
ግንቦት 2001	198.4	228.8	191.7	247.4	132.4	189.3	178.7	220.1	164.5	205.0	164.7	116.0	95.3	186.9	186.9	May "
ሰኔ 2001	198.0	229.5	188.1	248.0	137.8	202.2	177.6	228.5	165.6	201.7	154.9	117.7	95.3	186.5	186.5	June "
2002																2009/2010
ሐምሌ 2001	198.4	229.2	187.5	244.9	140.9	194.1	176.0	218.5	204.2	214.0	165.4	116.5	104.9	172.7	172.7	July 2009
ክሌሌ 2001	202.0	233.9	186.6	249.4	143.3	200.5	168.0	232.4	171.3	206.2	165.6	116.4	104.9	192.9	192.9	August "

ሠንጠረዥ 8ሀ፡፡ ጠቅላላ የምግብ የዕቅድ ዕቅድ የገንዘብ ጥጋታ መመዘኛ ኢንዱስትሪ ለጋምቤላ ሕዝቦች ክልል የገንዘብ ደረጃ መግለጫ
 ታህሳስ 1999 = 100

Table 8b: Consumer Price Index of Total Food and Its Components for the Gambela Peoples Regional State
 December 2006 = 100

ወርና ዓመት	ጠቅላላ ምግብ	እህል	በቤት ውስጥ የተወለዱ የምግብ ዓይነቶች					FOOD TAKEN AT HOME						ከቤት ውጭ የተወለዱ ምግቦች	Month and Year	
			ጥራጥረ	ዳቦና ሌሎች የተዘጋጁ ምግቦች	ሥጋ	ወተት፣ ዓይብና እንቁላል	ዘይትና ቅባቶች	እትክልትና ፍራፍሬ	ትመግ ቅመም	ደንችና ሌሎች ሥራሥርቶች	ያልተቆላ ቡናና ዝይ ቅጠል	ሌሎች ምግቦች	የግብረጫ አገልግሎት			
ታህሳስ 1999	100.0	100.0	100.0	100.0	100.0	100.0	100.0	100.0	100.0	100.0	100.0	100.0	100.0	100.0	100.0	December 2006
ሐምሌ 1999 - ሰኔ 2000	133.8	124.8	141.2	167.1	131.8	131.5	150.1	138.5	411.3	142.3	124.0	112.4	110.4	133.2	133.2	July 2007 - June 2008
ሐምሌ 2000 - ሰኔ 2001	226.8	253.3	294.1	360.5	153.4	201.1	167.9	224.5	313.5	219.5	122.9	165.6	126.7	167.0	167.0	July 2008 - June 2009
2000																2008/2009
ሐምሌ 2000	248.8	314.2	274.3	339.8	142.7	140.9	171.0	185.4	433.9	219.8	134.2	157.7	115.5	166.8	166.8	July 2008
ክሌሌ 2000	276.8	370.9	275.9	343.3	143.1	148.2	169.9	185.4	433.9	237.2	135.4	156.8	115.5	166.8	166.8	August "
መስከረም 2001	269.0	338.2	309.0	373.0	144.2	170.3	167.3	228.0	433.9	237.2	132.3	155.6	129.1	166.8	166.8	September "
ጥቅምት 2001	271.2	338.0	308.1	366.5	145.2	179.6	166.3	244.8	433.9	237.2	133.5	165.9	129.1	167.8	167.8	October "
ኅዳር 2001	224.5	233.8	319.8	366.7	163.0	209.0	170.0	235.2	433.9	237.2	133.7	166.4	129.1	166.8	166.8	November "
ታህሳስ 2001	200.8	196.0	281.7	371.3	159.6	268.0	166.5	227.1	304.1	213.0	123.4	157.7	129.1	166.8	166.8	December "
ጥር 2001	198.9	198.0	281.2	361.4	158.8	226.4	169.8	217.8	219.0	212.3	123.8	165.3	132.2	166.8	166.8	January 2009
የካቲት 2001	198.5	196.7	281.3	354.0	159.9	212.5	170.1	222.2	219.0	219.8	110.3	172.1	132.2	166.8	166.8	February "
መጋቢት 2001	197.6	195.1	285.0	359.2	159.4	207.1	168.2	222.3	219.0	211.9	112.4	171.5	134.4	167.1	167.1	March "
ግብርንብ 2001	201.9	206.7	297.3	357.3	154.0	208.8	166.7	218.2	192.6	214.6	105.4	164.4	136.5	167.1	167.1	April "
ጥቅምት 2001	212.9	221.0	307.7	361.7	154.8	219.6	165.5	245.7	221.2	196.4	113.7	173.7	122.3	166.8	166.8	May "
ሰኔ 2001	220.3	231.2	307.6	371.8	156.7	222.6	163.9	261.2	217.5	197.2	116.9	180.5	115.5	167.7	167.7	June "
2002																2009/2010
ሐምሌ 2001	230.0	252.7	306.8	378.3	161.7	227.4	157.4	256.4	217.5	168.4	125.0	184.0	115.5	167.4	167.4	July 2009
ክሌሌ 2001	230.4	258.3	313.3	355.9	164.1	227.5	158.9	232.5	146.0	182.6	135.2	183.9	115.5	167.7	167.7	August "

ሠንጠረዥ 9ሀ፡- ጠቅላላ የምግብ ክፍሎች የሽግግር ዋጋ መመዘኛ ኢንዱስትሪ ለሐረር ክልል መገንጠት ታህሳስ 1999 = 100

Table 9b: Consumer Price Index of Total Food and Its Components for the Harari People Regional State December 2006 = 100

ወርና ዓመት	ጠቅላላ ምግብ	እህል	በቤት ውስጥ የተወሰዱ የምግብ ዓይነቶች					FOOD TAKEN AT HOME						ከቤት ውጭ የተወሰዱ ምግቦች	Month and Year	
			ጥራጥረ	ዳቦና ሌሎች የተዘጋጁ ምግቦች	ሥጋ	ወተት+ ዓይብና እንቁሳል	ዘይትና ቅባቶች	እትክልትና ፍራፍሬ	ቅመግ ቅመም	ደንችና ሌሎች ሥራ-ሥርጅች	ያልተቆላ ቤናና ዝይ ቅጠል	ሌሎች ምግቦች	የግብረ-ጫ አገልግሎት			
ታህሳስ 1999	100.0	100.0	100.0	100.0	100.0	100.0	100.0	100.0	100.0	100.0	100.0	100.0	100.0	100.0	100.0	December 2006
ሐምሌ 1999 - ሰኔ 2000	130.4	128.3	129.6	124.0	112.4	120.7	160.5	154.9	312.5	182.1	119.6	101.4	101.9	123.1	123.1	July 2007 - June 2008
ሐምሌ 2000 - ሰኔ 2001	205.1	228.0	164.6	244.8	141.2	154.9	191.3	171.7	285.4	227.0	216.9	120.4	125.9	177.8	177.8	July 2008 - June 2009
2000																2008/2009
ሐምሌ 2000	201.0	232.6	156.0	239.9	140.0	170.4	201.5	147.8	408.5	318.9	179.6	114.9	115.5	164.0	164.0	July 2008
ክሌሌ 2000	214.3	246.6	167.1	240.2	148.4	179.7	208.0	180.0	404.2	232.2	214.3	117.3	115.5	171.9	171.9	August "
መስከረም 2001	213.9	248.3	168.7	247.9	143.5	170.6	204.1	158.6	380.6	232.2	217.2	117.3	115.5	172.1	172.1	September "
ጥቅምት 2001	213.9	245.3	170.4	256.1	150.7	173.8	196.0	153.8	339.3	232.2	220.1	117.3	115.5	176.0	176.0	October "
ኅዳር 2001	207.3	234.4	163.7	252.1	138.9	171.7	189.0	155.7	326.5	232.2	210.9	121.4	115.5	180.1	180.1	November "
ታህሳስ 2001	198.7	225.3	161.3	249.3	141.1	130.3	186.0	162.1	305.5	217.2	190.6	121.9	133.3	184.1	184.1	December "
ጥር 2001	195.9	217.1	160.8	250.5	136.5	130.6	186.7	165.8	274.4	231.7	190.3	122.2	133.3	184.4	184.4	January 2009
የካቲት 2001	202.8	217.1	165.2	248.9	135.4	131.3	192.6	169.1	245.7	231.7	229.8	122.2	133.3	177.8	177.8	February "
መጋቢት 2001	201.9	217.4	161.1	243.9	139.0	137.5	191.6	165.8	216.7	231.1	229.7	122.2	133.3	178.0	178.0	March "
ጊዮርጊያ 2001	202.3	218.7	165.3	240.0	132.2	150.8	184.8	184.7	191.5	222.2	230.7	122.2	133.3	178.1	178.1	April "
ግንቦት 2001	202.6	213.3	169.5	240.1	140.2	154.3	178.5	205.7	178.0	175.6	238.2	123.8	133.3	178.7	178.7	May "
ሰኔ 2001	206.5	219.5	166.4	229.2	148.8	157.3	177.5	211.3	154.4	166.7	251.7	122.2	133.3	188.3	188.3	June "
2002																2009/2010
ሐምሌ 2001	210.4	219.0	170.6	227.2	141.1	155.1	176.9	200.9	167.6	180.0	278.9	124.6	133.3	181.8	181.8	July 2009
ክሌሌ 2001	203.6	219.8	179.1	232.6	149.1	168.7	172.0	202.6	175.8	143.3	233.1	123.0	133.3	186.6	186.6	August "

ወንጠረዥ 10ላ:- ጠቅላላ የምግብ ወጪዎች የግንዛቤ ስርዓት የግንዛቤ ስርዓት የግንዛቤ ስርዓት የግንዛቤ ስርዓት
 ታህሳስ 1999 = 100

Table 10b: Consumer Price Index of Total Food and Its Components for the Oromiya Regional State
 December 2006 = 100

ወር ዓመት	ጠቅላላ ምግብ	እህል	በቤት ውስጥ የተወሰዱ የምግብ ዓይነቶች					FOOD TAKEN AT HOME						ከቤት ውጪ የተወሰዱ ምግቦች	Month and Year	
			ጥራጥራ	ዳቦና ሌሎች የተዘጋጁ ምግቦች	ሥጋ	ወተት+ ዓይብና እንቁላል	ዘይትና ቅባቶች	እትክልትና ፍራፍራ	ቅመግ ቅመግ	ደግኞች ሌሎች ሥራሥርኞች	ያልተቆላ ቤናና ካይ ቅጠል	ሌሎች ምግቦች	የግንዛቤ አገልግሎት			
ታህሳስ 1999	100.0	100.0	100.0	100.0	100.0	100.0	100.0	100.0	100.0	100.0	100.0	100.0	100.0	100.0	100.0	December 2006
ሐምሌ 1999 - ሰኔ 2000	138.7	137.3	127.0	147.9	119.9	116.4	151.9	147.1	379.6	134.7	121.9	102.5	118.2	122.6	122.6	July 2007 - June 2008
ሐምሌ 2000 - ሰኔ 2001	202.0	242.8	175.2	238.0	152.0	155.2	163.5	176.6	314.2	204.1	142.0	161.6	133.9	156.2	156.2	July 2008 - June 2009
2000																2008/2009
ሐምሌ 2000	223.8	295.1	183.9	224.9	148.7	142.9	182.5	147.2	477.1	190.4	134.4	133.8	133.6	142.9	142.9	July 2008
ክሌሌ 2000	224.8	297.5	177.1	242.0	149.6	143.8	171.5	154.4	478.1	191.1	131.6	145.7	132.3	146.6	146.6	August "
መስከረም 2001	226.0	297.2	180.2	243.1	153.0	152.3	180.3	157.3	465.7	186.8	135.4	145.6	133.7	147.8	147.8	September "
ጥቅምት 2001	217.9	282.4	181.3	247.3	151.7	154.9	175.3	155.5	399.9	181.8	135.6	142.2	132.1	151.4	151.4	October "
ኅዳር 2001	204.1	252.4	178.8	250.2	151.3	153.1	168.9	154.1	356.2	181.7	138.2	149.2	129.7	152.0	152.0	November "
ታህሳስ 2001	183.9	212.1	161.5	234.3	149.5	144.4	159.5	152.5	312.1	182.8	139.9	152.5	127.2	151.5	151.5	December "
ጥር 2001	188.9	216.5	163.7	236.9	149.6	152.9	157.7	174.4	261.4	208.1	142.4	168.8	129.4	159.3	159.3	January 2009
የኮቲት 2001	190.0	215.8	172.2	242.5	152.0	157.5	153.7	180.7	236.6	214.7	145.0	175.4	132.0	159.1	159.1	February "
መጋቢት 2001	189.3	210.3	169.2	236.7	151.7	155.2	155.7	205.8	209.1	225.1	150.9	176.9	132.1	163.4	163.4	March "
ጊዮርጊያ 2001	191.1	210.5	175.7	225.7	156.3	161.9	153.8	208.7	208.3	230.8	152.5	180.4	138.3	166.1	166.1	April "
ግንቦት 2001	189.4	208.3	181.5	234.8	156.1	168.5	153.0	211.2	190.9	213.9	149.1	184.9	141.1	165.7	165.7	May "
ሰኔ 2001	194.5	215.9	177.0	237.8	154.3	174.9	149.7	216.9	175.0	241.6	149.2	183.7	144.9	168.7	168.7	June "
2002																2009/2010
ሐምሌ 2001	192.7	221.1	176.5	239.5	154.6	169.1	149.9	178.7	205.5	193.5	154.6	188.1	144.9	169.7	169.7	July 2009
ክሌሌ 2001	192.2	221.3	168.2	238.8	156.2	167.2	156.1	181.2	195.1	182.2	158.5	185.9	146.9	172.2	172.2	August "

ሠንጠረዥ 11ላ:- ጠቅላላ የምግብ ክፍሎች የሽያጭ ዋጋ መመዘኛ ኢንዱስትሪ ለጸሐፊው ክልል መገምገሚያ
 ታህሳስ 1999 = 100

Table 11b: Consumer Price Index of Total Food and Its Components for the SNNP Regional State
 December 2006 = 100

ወርና ዓመት	ጠቅላላ የምግብ	እህል	በቤት ውስጥ የተወለዱ የምግብ ዓይነቶች			FOOD TAKEN AT HOME							ከቤት ውጭ የተወለዱ የምግብ	Month and Year		
			ጥራጥረ	ዳቦና ሌሎች የተዘጋጁ የምግብ	ሥጋ	ወተት+ ዓይብና እንቁላል	ዘይትና ቅባቶች	እትክልትና ፍራፍሬ	ትመግ ቅመም	ደገኞች ሌሎች ሥራ-ሥርዓት	ያልተቆላ ቡናና ዝይ ቅጠል	ሌሎች የምግብ			የግብረ-ጫ አገልግሎት	
ታህሳስ 1999	100.0	100.0	100.0	100.0	100.0	100.0	100.0	100.0	100.0	100.0	100.0	100.0	100.0	100.0	100.0	December 2006
ሐምሌ 1999 - ሰኔ 2000	131.1	136.1	122.9	126.9	121.5	119.2	143.7	146.8	264.5	117.1	132.2	112.2	106.0	107.1	107.1	July 2007 - June 2008
ሐምሌ 2000 - ሰኔ 2001	189.3	237.2	156.7	220.2	152.6	159.1	167.3	156.8	227.9	173.1	145.0	175.6	121.2	127.3	127.3	July 2008 - June 2009
2000																2008/2009
ሐምሌ 2000	214.7	316.3	148.1	202.8	153.2	141.0	164.5	132.2	349.1	164.3	154.3	148.2	120.2	121.7	121.7	July 2008
ክሌሌ 2000	214.0	311.2	152.3	207.6	156.8	145.1	163.2	137.6	342.5	163.7	157.1	157.0	122.4	121.3	121.3	August "
መስከረም 2001	215.4	309.2	152.2	214.1	162.1	151.7	169.1	142.5	325.0	169.0	159.1	161.2	119.6	123.4	123.4	September "
ጥቅምት 2001	201.6	270.1	151.6	225.1	162.2	152.8	169.6	140.5	285.2	171.3	160.0	160.4	119.9	124.0	124.0	October "
ኅዳር 2001	186.0	232.7	150.7	234.1	153.2	153.3	165.2	134.6	255.8	167.9	148.7	169.9	118.6	124.5	124.5	November "
ታህሳስ 2001	173.5	199.2	158.6	237.0	150.1	153.9	161.7	141.0	225.7	168.6	131.0	173.4	117.5	128.9	128.9	December "
ጥር 2001	173.1	200.6	158.7	220.4	149.0	157.8	160.5	145.6	197.0	169.9	129.6	179.9	116.7	128.4	128.4	January 2009
የኮቲት 2001	174.9	194.8	159.5	218.9	142.6	171.2	161.7	166.8	168.2	180.8	139.5	191.3	123.5	129.8	129.8	February "
መጋቢት 2001	175.4	194.1	162.5	218.7	144.1	166.0	162.0	172.1	167.9	182.8	138.4	191.6	123.2	130.1	130.1	March "
ጊዮርጊስ 2001	180.2	202.7	161.6	215.8	148.1	166.9	184.3	181.8	166.3	184.7	139.6	190.6	121.7	131.2	131.2	April "
ግንቦት 2001	180.2	205.6	160.9	223.1	153.5	175.3	174.4	191.7	125.7	178.0	139.1	193.1	126.0	131.7	131.7	May "
ሰኔ 2001	182.1	209.6	163.3	225.0	156.8	174.2	171.7	195.8	126.8	176.3	143.1	190.2	124.8	132.9	132.9	June "
2002																2009/2010
ሐምሌ 2001	182.6	214.8	163.2	227.5	160.9	176.5	164.0	158.1	136.7	173.9	156.6	191.9	129.4	134.3	134.3	July 2009
ክሌሌ 2001	184.5	217.9	165.0	233.2	162.9	180.6	164.5	160.1	131.9	168.6	170.3	193.0	131.6	137.8	137.8	August "

ሠንጠረዥ 12a:- ጠቅላላ የምግብ ክፍሎች የ ሽግግር ዋጋ መመዘኛ ሊያደገስ ለሰጠ ከልሳጃ መገንጠት ታህሳስ 1999 = 100

Table 12b: Consumer Price Index of Total Food and Its Components for the Somali Regional State December 2006 = 100

ወርና ዓመት	ጠቅላላ ምግብ Food Total	እህል Cereals	በቤት ውስጥ የተወለዱ የምግብ ዓይነቶች			FOOD TAKEN AT HOME							ከቤት ውጭ የተወለዱ ምግቦች Food taken away from home	Month and Year		
			ጥራጥረ Pulses	ዳቦና ሌሎች የተዘጋጁ ምግቦች Bread and other Prepared Food	ሥጋ Meat	ወተት+ ዓይብና እንቁሳል Milk,Cheese and Egg	ዘይትና ቅባቶች Oils and Fats	እትክልትና ፍራፍሬ Vegetables and Fruits	ትመግ ቅመም Spices	ደገኞች ሌሎች ሥራሥርኞች Potatoes, Other Tubers and Stems	ያልተቆላ ቤናና ዝይ ቅጠል Coffee (beans, whole) and Tea Leaves	ሌሎች ምግቦች Other Food Items			የግብረጫ አገልግሎት Milling Charges	
ታህሳስ 1999	100.0	100.0	100.0	100.0	100.0	100.0	100.0	100.0	100.0	100.0	100.0	100.0	100.0	100.0	100.0	December 2006
ሐምሌ 1999 - ሰኔ 2000	124.6	136.0	124.9	120.3	126.3	103.1	138.8	128.3	299.8	145.0	115.8	102.8	99.2	120.5	120.5	July 2007 - June 2008
ሐምሌ 2000 - ሰኔ 2001	195.9	246.5	175.9	207.5	167.3	171.8	175.4	163.7	272.0	220.7	149.0	152.1	110.4	157.8	157.8	July 2008 - June 2009
2000																2008/2009
ሐምሌ 2000	198.2	285.6	182.0	189.9	158.7	137.5	184.8	144.9	369.4	276.6	119.1	125.9	106.2	150.9	150.9	July 2008
ክሌሌ 2000	208.6	301.8	190.3	200.9	162.2	159.7	186.2	162.7	388.9	221.6	119.3	130.2	104.8	149.6	149.6	August "
መስከረም 2001	212.0	300.3	192.3	205.4	163.7	164.4	182.9	165.2	333.3	190.0	126.3	156.5	106.3	151.2	151.2	September "
ጥቅምት 2001	202.5	275.9	190.2	211.8	162.1	166.2	178.3	168.0	333.3	195.2	120.3	156.6	110.1	152.1	152.1	October "
ኅዳር 2001	193.3	255.1	187.7	210.5	161.2	151.1	178.3	161.5	241.7	206.0	127.6	157.0	108.4	156.4	156.4	November "
ታህሳስ 2001	170.6	197.2	163.3	196.3	150.0	154.5	170.5	141.3	250.0	213.9	132.3	156.9	107.7	156.1	156.1	December "
ጥር 2001	185.4	217.0	163.9	204.8	168.4	170.2	167.8	159.7	250.0	225.1	158.0	156.7	102.5	149.7	149.7	January 2009
የካቲት 2001	194.0	227.8	166.1	214.3	169.3	180.6	175.2	149.1	250.0	216.5	172.2	157.3	104.4	156.7	156.7	February "
መጋቢት 2001	191.1	222.5	166.1	218.1	165.0	178.4	170.5	159.5	238.8	232.5	166.5	156.6	116.7	162.4	162.4	March "
ጊዮርጊያ 2001	194.6	218.7	169.4	215.7	179.8	204.8	170.8	166.1	225.0	241.6	171.5	157.0	116.7	165.3	165.3	April "
ግንቦት 2001	196.3	226.2	167.0	215.7	187.2	192.1	169.2	182.6	208.3	230.7	171.7	157.4	117.0	167.5	167.5	May "
ሰኔ 2001	203.8	230.0	172.1	206.0	180.1	201.6	170.3	204.4	175.0	199.1	202.7	157.2	124.3	175.6	175.6	June "
2002																2009/2010
ሐምሌ 2001	202.3	238.1	161.6	201.1	179.1	190.8	168.0	184.0	166.7	201.7	190.3	157.8	118.7	176.2	176.2	July 2009
ክሌሌ 2001	197.4	234.9	176.6	207.5	189.9	188.9	163.9	172.6	166.7	206.5	167.0	158.0	124.3	172.3	172.3	August "

ሠንጠረዥ 13b:- ጠቅላላ የምግብ ወጪዎች የ ሽግግር ዋጋ መመዘኛ ኢንዱስትሪ ለትግራይ ክልል መገንጠያ
 ታህሳስ 1999 = 100

Table 13b: Consumer Price Index of Total Food and Its Components for the Tigray Regional State
 December 2006 = 100

ወር ዓመት	ጠቅላላ ምግብ	እህል	በቤት ውስጥ የተወሰዱ የምግብ ዓይነቶች					FOOD TAKEN AT HOME					ከቤት ውጭ የተወሰዱ ምግቦች	Month and Year	
			ጥራጥራ	ዳቦና ሌሎች የተዘጋጁ ምግቦች	ሥጋ	ወተት+ ዓይብና እንቁላል	ዘይትና ቅባቶች	እትክልትና ፍራፍሬ	ትመግ ቅመም	ደንችና ሌሎች ሥራሥርጅች	ያልተቆላ ቤናና ዝይ ቅጠል	ሌሎች ምግቦች			የግብረ-ጫ አገልግሎት
ታህሳስ 1999	100.0	100.0	100.0	100.0	100.0	100.0	100.0	100.0	100.0	100.0	100.0	100.0	100.0	100.0	December 2006
ሐምሌ 1999 - ሰኔ 2000	143.4	138.5	129.3	126.5	122.8	114.8	166.5	122.5	345.0	149.0	127.1	104.2	113.7	124.7	July 2007 - June 2008
ሐምሌ 2000 - ሰኔ 2001	214.8	254.3	180.2	200.9	140.6	158.9	186.5	155.0	287.1	216.1	147.2	156.4	131.2	161.2	July 2008 - June 2009
2001															2008/2009
ሐምሌ 2000	230.2	279.5	169.2	192.0	137.1	146.5	200.2	116.8	422.1	195.2	150.4	130.7	120.7	151.3	July 2008
ክሌሌ 2000	237.7	284.9	179.7	206.0	138.6	150.1	200.0	151.1	447.1	216.3	153.9	149.2	122.8	153.5	August "
መስከረም 2001	244.3	293.5	193.7	198.8	148.1	154.7	202.9	180.7	422.5	211.9	146.7	147.1	124.6	161.7	September "
ጥቅምት 2001	241.1	289.5	202.2	201.6	141.4	161.2	195.2	169.4	410.8	197.4	140.9	140.4	123.9	165.1	October "
ኅዳር 2001	223.4	268.0	190.8	207.8	137.5	162.7	182.6	142.7	336.1	220.3	141.8	141.2	133.0	155.8	November "
ታህሳስ 2001	206.8	241.9	174.6	192.8	136.9	160.8	185.5	135.4	300.4	212.3	142.8	145.3	133.0	158.2	December "
ጥር 2001	200.8	235.7	165.5	191.5	140.3	157.8	179.8	138.6	254.4	203.1	139.9	159.2	125.2	158.8	January 2009
የካቲት 2001	200.2	235.4	173.7	195.4	139.3	159.7	180.4	150.8	193.1	208.3	148.6	170.3	134.2	164.4	February "
መጋቢት 2001	203.3	240.4	183.8	193.1	135.3	159.6	181.2	164.3	174.1	226.0	148.2	170.5	138.3	168.7	March "
ጊዮርጊስ 2001	203.7	243.8	178.1	200.8	138.8	160.4	176.3	163.8	158.8	236.6	152.0	169.3	137.2	162.7	April "
ግንቦት 2001	191.6	217.2	177.7	214.4	144.3	161.7	179.2	177.1	161.7	229.5	149.2	176.3	138.8	164.1	May "
ሰኔ 2001	194.3	221.5	173.0	216.1	149.2	171.8	174.9	169.6	163.6	236.6	151.8	177.5	143.1	169.7	June "
2002															2009/2010
ሐምሌ 2001	198.2	226.7	174.5	221.4	149.2	177.4	165.4	167.5	175.2	248.5	148.3	180.6	154.6	178.9	July 2009
ክሌሌ 2001	200.2	231.5	173.0	219.9	156.3	179.4	161.0	160.9	153.9	244.5	148.6	181.2	166.1	181.1	August "

General CPI for Country Level and Major Regions

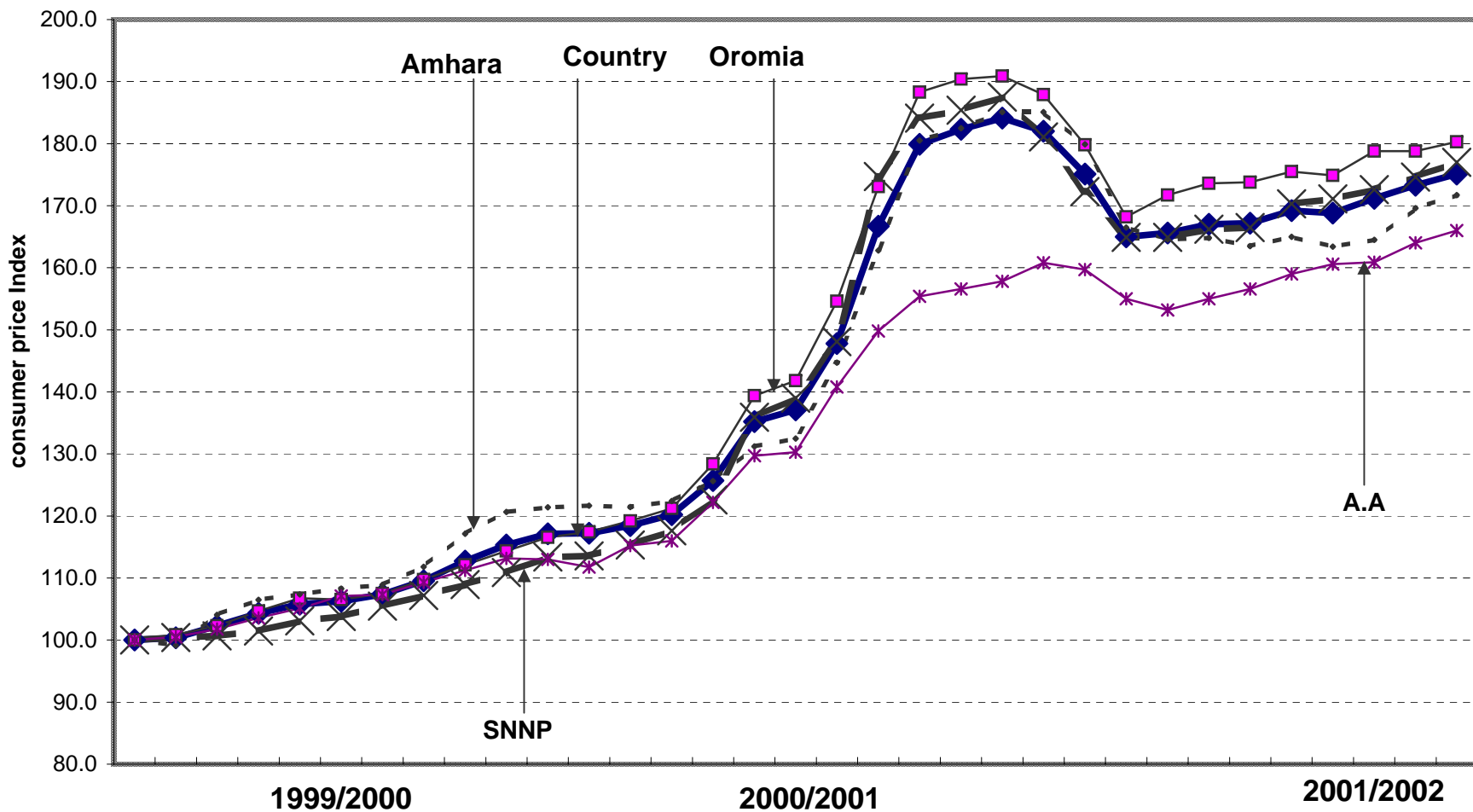
ጠቅላላ የሽያጭ ዋጋ ኢንዱክስ ለአገር አቀፍና ለዋና ዋና ክልሎች

2007/2008

2008/2009

2009/2010

D J F M A M J J A S O N D J F M A M J J A S O N D J F M A M J J A



የሽያጭ ዋጋ መመዘኛ ኢንዱክስ

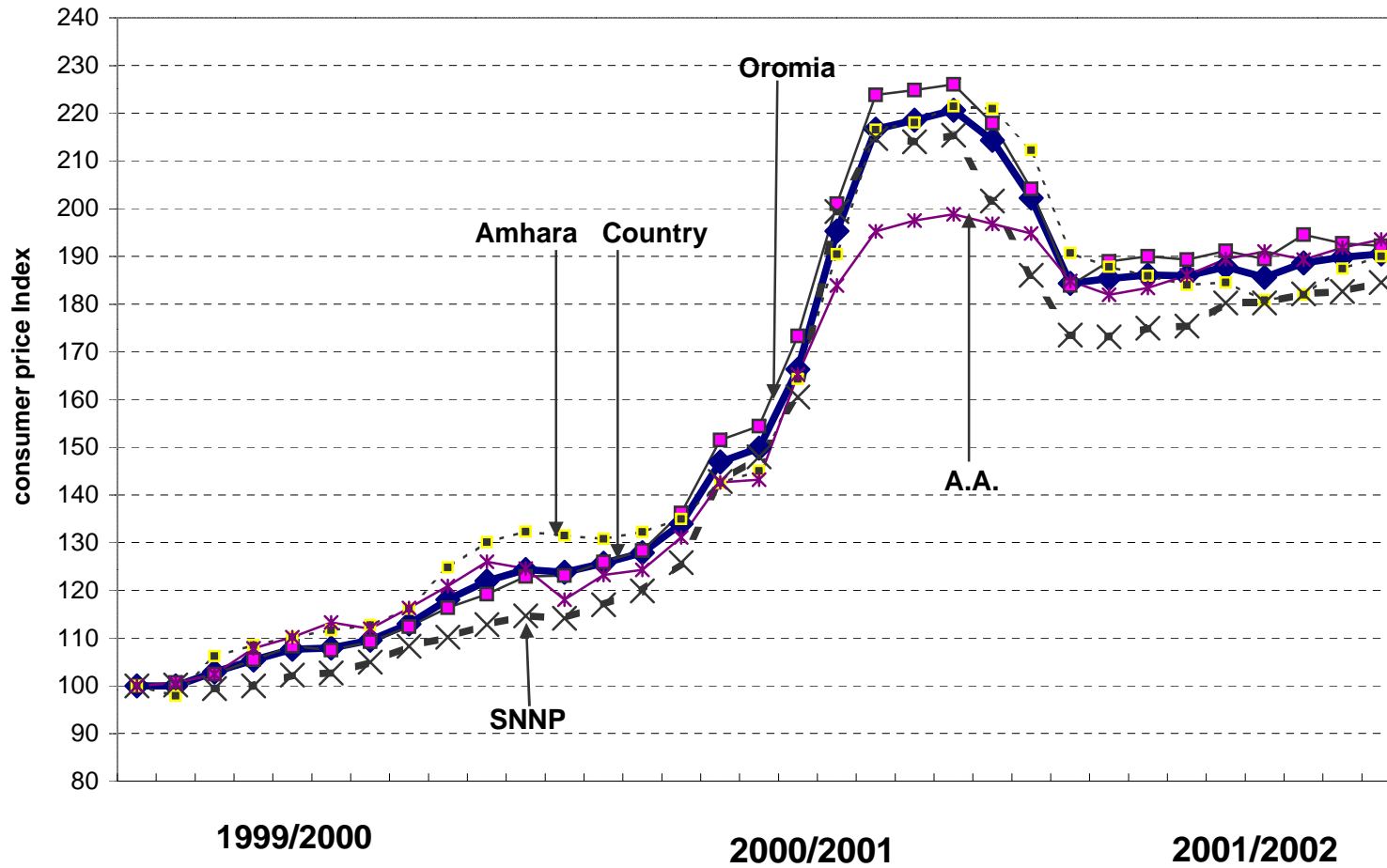
Food CPI for Country Level and Major Regions
 የምግብ የሽማግሌት ዋጋ ኢንዱክስ ለአገር አቀፍና ለዋና ዋና ክልሎች

2007/2008

2008/2009

2009/2010

D J F M A M J J A S O N D J F M A M J J A S O N D J F M A M J J A



የሽማግሌት ዋጋ መመዘኛ ኢንዱክስ