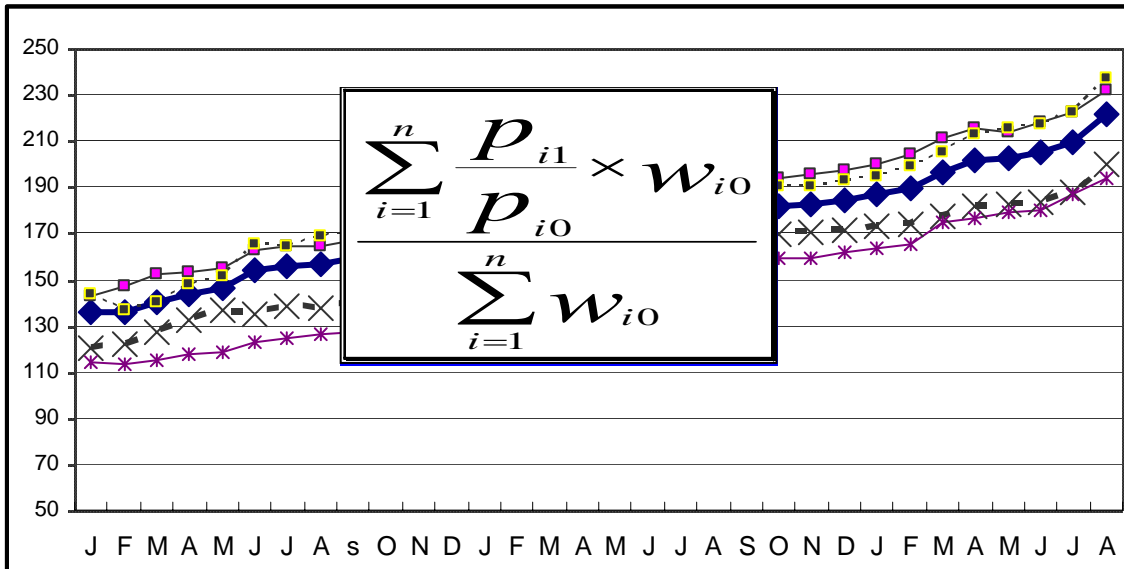


በኢትዮጵያ ፌዴራላዊ ዲሞክራሲያዊ ሪፐብሊክ
 የማዕከላዊ ስታቲስቲክስ ኤጀንሲ

THE FEDERAL DEMOCRATIC REPUBLIC OF ETHIOPIA
 CENTRAL STATISTICAL AGENCY

የአገር አቀፍና የክልሎች የሽማግሌት ዋጋ መመዘኛ ኢንዱክሶች
 የኅዳር ወር 2002 ዓ.ም.
 [ታህሳስ 1999 = 100]
 መረጃ ቁጥር 26

COUNTRY AND REGIONAL LEVEL CONSUMER PRICE INDICES



[December 2006 = 100]
 For the month of November 2009
 Information No. 26

Tel: 251-11-1 553011
 Fax: 251-11-1550334.
 Email: csa@ethionet.et

አዲስ አበባ
 ኅዳር 28 ቀን 2002 ዓ.ም.
 ADDIS ABABA
 7 December 2009

CONTENTS

	Page
Introduction.....	4
Inflation Rate.....	8
Comparison of CPI Movements, Current Vs Last Year's Similar Months, at country Level.....	10
Comparison of CPI Movements, Current Vs Last Year's Similar Months, at country and Regional Levels.....	11

List of Tables

Table a: Number of Markets Covered and Basket of Commodities by Region.....	2
Table 1a: General Consumer Price Index and Its Components at Country Level.....	13
Table 1b: Consumer Price Index of Total Food and Its Components at Country Level.....	14
Table 1c: Consumer Price Index of House Rent, Construction Materials, Water, Fuel and Power and Its Components at Country Level.....	15
Table 2a: Summary of General Consumer Price Indices at Country and Regional Levels.....	16
Table 2b: Summary of Consumer Price Indices of Food at Country and Regional Levels.....	18
Table 3a: General Consumer Price Index and Its Components for the City of Addis Ababa Administration.....	20
Table 3b: Consumer Price Index of Total Food and Its Components for the City of Addis Ababa Administration.....	21
Table 4a: General Consumer Price Index and Its Components for the Afar Regional State.....	22
Table 4b: Consumer Price Index of Total Food and Its Components for the Afar Regional State.....	23
Table 5a: General Consumer Price Index and Its	

Components for the Amhara Regional State.....	24
Table 5b: Consumer Price Index of Total Food and Its	
Components for the Amhara Regional State.....	25
Table 6a: General Consumer Price Index and Its	
Components for the Benishangul-Gumuz Regional State.....	26
Table 6b: Consumer Price Index of Total Food and Its	
Components for the Benishangul-Gumuz Regional State.....	27
Table 7a: General Consumer Price Index and Its	
Components for the Dire Dawa Administrative Council.....	28
Table 7b: Consumer Price Index of Total Food and Its	
Components for the Dire Dawa Administrative Council.....	29
Table 8a: General Consumer Price Index and Its	
Components for the Gambela Peoples Regional State.....	30
Table 8b: Consumer Price Index of Total Food and Its	
Components for the Gambela Peoples Regional State.....	31
Table 9a: General Consumer Price Index and Its	
Components for the Harari Peoples Regional State.....	32
Table 9b: Consumer Price Index of Total Food and Its	
Components for the Harari Peoples Regional State.....	33
Table 10a: General Consumer Price Index and Its	
Components for the Oromia Regional State.....	34
Table 10b: Consumer Price Index of Total Food and Its	
Components for the Oromia Regional State.....	35
Table 11a: General Consumer Price Index and Its	
Components for the SNNP Regional State.....	36
Table 11b: Consumer Price Index of Total Food and Its	
Components for the SNNP Regional State.....	37
Table 12a: General Consumer Price Index and Its	
Components for the Somali Regional State.....	38
Table 12b: Consumer Price Index of Total Food and Its	
Components for the Somali Regional State.....	39
Table 13a: General Consumer Price Index and Its	
Components for the Tigray Regional State.....	40
Table 13b: Consumer Price Index of Total Food and Its	
Components for the Tigray Regional State.....	41

Introduction

The Consumer Price Index (CPI) measures the average change in the price paid by consumers for a fixed market basket of goods and services. It is usually based on household expenditure weights of the goods and services in the basket and their current market prices. The twelve CPI's (i.e., the CPI's of the 11 Regions and the CPI at Country Level) presented in this report are based on the results of the Household Income, Consumption and Expenditure Survey (HICES) conducted by the Central Statistical Agency in 2004/2005 from which expenditure weights are derived for major household goods and services of that period and adjusted using the December 2006 retail prices of the goods and services as a base period.

The December 2006 based CPI updates the previous CPI series (i.e. December 2000 based) and the newly selected baskets are more diversified and the weights are more accurate. It also showed various improvements and incorporates non-food index as an independent group. The new series is constructed for country as a whole and Regional States including Dire Dawa and the Addis Ababa City Administration. However, similar indices had been utilized at Addis Ababa Level since 1963 and at Country, Urban and Rural Levels since 1995/96 and in Country and Regional level since 2000.

All the twelve general indices are divided into two major groups that is food and non-food index. The non-food index has ten major groups each, namely: Beverages; Cigarettes and Tobacco; Clothing and Footwear; House Rent, Construction Materials, Water, and Fuel and Power; Furniture, Furnishing, Household Equipment and Operation; Medical Care and Health; Transport and Communication; Recreation, Entertainment and Education; Personal Care and Effects; and Miscellaneous Goods and Services. On the other hand, the Food Index has 13 sub-groups. These are: Cereals; Pulses; Bread and Other Prepared Food; Meat; Milk, Cheese and Eggs; Vegetables and

Fruits; Oil and Fats Spices; Potatoes, Other Tubers and Stems; Coffee Beans (whole) and Tea Leaves; Other Food Items; Milling Charges; and Food taken Away from Home. Furthermore, the new CPI based on December 2006 includes more detailed #Housing, Construction materials, Water and Fuel and Power; components.

For the construction of the current consumer price indices, up to date data on retail prices are collected in the purposely selected sample market places located in representative urban centers in each zone/special weredas of the country. Hence, a total of 119 market places were selected for the retail price survey. In each market place an enumerator is assigned to undertaking the data collection activities. The price data is collected from the 1st day through 15th days of European Calendar month under consideration. To calculate the monthly regional consumer price indices, geometric means of prices of the specific regions are used. The distribution of the market place of each region and items included in the basket of commodities are given on Table A on page 2.

An important factor in constructing a Consumer Price Index is to select the representative basket of goods and services. Including all consumption items into the market basket of goods and services is both cumbersome and unnecessarily costly in term of data collection and processing. Furthermore, it doesn't make sense to include an insignificant weight into an index basket which could not move the price relative up or downwards compared to the general market trend. As a result, basket of goods and services included in the regional baskets are determined by expenditure cut-off point. The total numbers of items included in the regional basket in the December 2006 based indices are given in Table A on page 2.

Country level CPI aggregates the regional group indices and the contributions of the five relatively big regions in terms of the magnitude of the expenditure account for more than 95 percent. These regions are Oromiya, Amhara, SNNP, Addis Ababa and Tigray. On the other hand, the contributions of the remaining regions to the

Country Level Consumer Price Index is about five percent.

According to the weights for food and non-food groups in Table B below, the December 2006 based CPI is about 57 percent of household expenditure spent on the food component, which declined by 3 percentage points as compared to the December 2000 based CPI. On the other hand, the expenditure on non-food components increased from 40 percent to 43 percent. This indicates that the economic situation in the country is going in the right direction as postulated by economic theory. Similarly, in this period larger regions resulted in a substantial decrease in the average weights for food, despite the increased food taken out of home. It was offset mainly by an increase in housing, construction materials, water and fuel and power, furnishing and transport and communication.

Table B: Major groups in the 2000 and 2006 based CPI and their weights at Country Level

No.	Major Group	Weights	
		2000 based CPI	2006 based CPI
1	Food	0.6008	0.5701
2	Non-Food	0.3992	0.4299
3	Beverages	0.0201	0.0202
4	Cigarettes and Tobacco	0.0051	0.0048
5	Clothing and Footwear	0.0926	0.0832
6	House Rent, Construction Materials, Water and Fuel and Power	0.1544	0.2056
7	Furniture, Furnishing, Household Equipment and Operation	0.0494	0.0375
8	Medical Care and Health	0.0120	0.0111
9	Transport and Communication	0.0199	0.0249
10	Recreation, Entertainment and Education	0.0101	0.0109
11	Personal Care and Effects	0.0092	0.0083
12	Miscellaneous Goods	0.0264	0.0234
	Total	1.000	1.000

መግቢያ..... 1
 የወሩ ዋጋ ግሽበት ሁኔታ 7

የዘንድሮውና የአምናው ተመሳሳይ ወሮች የሽማቾች ዋጋ መመዘኛ ጠቋሚ አሀዝ ንፅፅር በአገር አቀፍ ደረጃ 10

የዘንድሮውና የአምናው ተመሳሳይ ወሮች የሽማቾች ዋጋ መመዘኛ ጠቋሚ አሀዝ ንፅፅር በአገር አቀፍና በክልሎች ደረጃ..... 11

የሠንጠረዦች ዝርዝር

ሠንጠረዥ ሀ: በጥናቱ የተሸፈኑ ገበያዎችና በኢንዱስትሪ ማዕቀፍ የተካተቱ ዕቃዎችና በዕቃዎች/አገልግሎቶች ብዛት በክልል..... 2

ሠንጠረዥ 1ሀ: ጠቅላላ የሽማቾች ዋጋ መመዘኛ ኤንዱስትሪና በስሩ የተካተቱ ክፍሎች በአገር አቀፍ ደረጃ..... 13

ሠንጠረዥ 1ለ: ጠቅላላ ምግብና የምግብ ክፍሎች የሽማቾች ዋጋ መመዘኛ ኤንዱስትሪ በአገር አቀፍ ደረጃ..... 14

ሠንጠረዥ 1ሐ: አገር አቀፍ የቤት ኪራይ፣ የቤት መስሪያ ዕቃዎች፣ ውሃና ኬነርጂ የሽማቾች ዋጋ መመዘኛ ኤንዱስትሪ 15

ሠንጠረዥ 2ሀ: ጠቅላላ የሽማቾች ዋጋ መመዘኛ ኤንዱስትሪ በአገር አቀፍና በክልሎች ደረጃ 16

ሠንጠረዥ 2ለ: የምግብ ዋጋ መመዘኛ ኤንዱስትሪ ማጠቃለያ በአገር አቀፍ እና በክልሎች ደረጃ 18

ሠንጠረዥ 3ሀ: ጠቅላላ የሽማቾች ዋጋ መመዘኛ ኤንዱስትሪና በስሩ የተካተቱ ክፍሎች ለአዲስ አበባ ከተማ መስተዳድር 20

ሠንጠረዥ 3ለ: ጠቅላላ ምግብና የምግብ ክፍሎች የሽማቾች ዋጋ መመዘኛ ኤንዱስትሪ ለአዲስ አበባ ከተማ መስተዳድር 21

ሠንጠረዥ 4ሀ: ጠቅላላ የሽማቾች ዋጋ መመዘኛ ኤንዱስትሪና በስሩ የተካተቱ ክፍሎች ለአፋር ክልላዊ መንግስት..... 22

ሠንጠረዥ 4ለ: ጠቅላላ ምግብና የምግብ ክፍሎች የሽማቾች ዋጋ መመዘኛ ኤንዱስትሪ ለአፋር ክልላዊ መንግስት..... 23

ሠንጠረዥ 5ሀ: ጠቅላላ የሽማቾች ዋጋ መመዘኛ ኤንዱስትሪና በስሩ የተካተቱ ክፍሎች ለአማራ ክልላዊ መንግስት..... 24

ሠንጠረዥ 5ለ: ጠቅላላ ምግብና የምግብ ክፍሎች የሽማቾች ዋጋ መመዘኛ ኤንዱስትሪ ለአማራ ክልላዊ መንግስት..... 25

ሠንጠረዥ 6ሀ: ጠቅላላ የሽማቾች ዋጋ መመዘኛ ኤንዱስትሪና በስሩ የተካተቱ ክፍሎች ለቤንሻንጉል-ጉሙዝ ክልላዊ መንግስት..... 26

ሠንጠረዥ 6ለ: ጠቅላላ ምግብና የምግብ ክፍሎች የሽማቾች ዋጋ መመዘኛ ለቤንሻንጉል-ጉሙዝ ክልላዊ መንግስት..... 27

<p>ሠንጠረዥ 7ሀ: ጠቅላላ የሸማቾች ዋጋ መመዘኛ ኤንደክስና በስሩ የተካተቱ ክፍሎች ለድሬደዋ አስተዳደር ካውንስል</p>	28
<p>ሠንጠረዥ 7ለ: ጠቅላላ ምግብና የምግብ ክፍሎች የሸማቾች ዋጋ መመዘኛ ለድሬደዋ አስተዳደር ካውንስል</p>	29
<p>ሠንጠረዥ 8ሀ: ጠቅላላ የሸማቾች ዋጋ መመዘኛ ኤንደክስና በስሩ የተካተቱ ክፍሎች ለጋምቤላ ህዝቦች ክልላዊ መንግስት</p>	30
<p>ሠንጠረዥ 8ለ: ጠቅላላ ምግብና የምግብ ክፍሎች የሸማቾች ዋጋ መመዘኛ ለጋምቤላ ህዝቦች ክልላዊ መንግስት</p>	31
<p>ሠንጠረዥ 9ሀ: ጠቅላላ የሸማቾች ዋጋ መመዘኛ ኤንደክስና በስሩ የተካተቱ ክፍሎች ለለሐረሪ ህዝብ ክልላዊ መንግስት</p>	32
<p>ሠንጠረዥ 9ለ: ጠቅላላ ምግብና የምግብ ክፍሎች የሸማቾች ዋጋ መመዘኛ ኤንደክስ ለለሐረሪ ህዝብ ክልላዊ መንግስት</p>	33
<p>ሠንጠረዥ 10ሀ: ጠቅላላ የሸማቾች ዋጋ መመዘኛ ኤንደክስና በስሩ የተካተቱ ክፍሎች ለአሮሚያ ክልላዊ መንግስት</p>	34
<p>ሠንጠረዥ 10ለ: ጠቅላላ ምግብና የምግብ ክፍሎች የሸማቾች ዋጋ መመዘኛ ኤንደክስ ለአሮሚያ ክልላዊ መንግስት</p>	35
<p>ሠንጠረዥ 11ሀ: ጠቅላላ የሸማቾች ዋጋ መመዘኛ ኤንደክስና በስሩ የተካተቱ ክፍሎች ለደ.ኢ.ብ.ብ.ሀ ክልላዊ መንግስት</p>	36
<p>ሠንጠረዥ 11ለ: ጠቅላላ ምግብና የምግብ ክፍሎች የሸማቾች ዋጋ መመዘኛ ኤንደክስ ለደ.ኢ.ብ.ብ.ሀ ክልላዊ መንግስት</p>	37
<p>ሠንጠረዥ 12ሀ: ጠቅላላ የሸማቾች ዋጋ መመዘኛ ኤንደክስና በስሩ የተካተቱ ክፍሎች ለሶማሌ ክልላዊ መንግስት</p>	38
<p>ሠንጠረዥ 12ለ: ጠቅላላ ምግብና የምግብ ክፍሎች የሸማቾች ዋጋ መመዘኛ ኤንደክስ ለሶማሌ ክልላዊ መንግስት</p>	39
<p>ሠንጠረዥ 13ሀ: ጠቅላላ የሸማቾች ዋጋ መመዘኛ ኤንደክስና በስሩ የተካተቱ ክፍሎች ለትግራይ ክልላዊ መንግስት</p>	38
<p>ሠንጠረዥ 13ለ: ጠቅላላ ምግብና የምግብ ክፍሎች የሸማቾች ዋጋ መመዘኛ</p>	41

መግቢያ

የሽማፍራዎች ዋጋ መመዘኛ ኢንዱስትሪ ማለት ሽማፍራዎች ለተወሰኑ ዕቃዎችና አገልግሎቶች የከፈሉትን አማካይ የዋጋ ለውጥ ለመለካት የሚያገለግል ጠቋሚ አህዝ ነው። የዋጋ መመዘኛ ኢንዱስትሪ አብዛኛውን ጊዜ መሠረት የሚያደርገው የቤተሰብ ገቢ፣ ፍጆታና ወጪ ጥናት ወጤት በሆነው ቤተሰቦች በዕቃዎችና ግልጋሎቶች ላይ ባወጡት የመቶኛ ድርሻ መጠንና የወቅቱ የገበያ ዋጋ ላይ ነው። በዚህ ሪፖርት ውስጥ የተካተቱት 12 ኢንዱስትሪዎች (የ11 ክልሎችና የአገር አቀፍ) መሠረት ያደረጉት የማዕከላዊ ስታቲስቲክስ ኤጀንሲ በ1996/97 በጀት ዓመት በመላ አገሪቱ በናሙና በተመረጡ ቦታዎች ያካሄደውን የቤተሰብ ገቢ፣ ፍጆታና ወጪ ጥናት ወጤት ነው።

ይህ ታህሳስ ወር 1999 ዓ.ምን መሠረት ያደረገው (ታህሳስ 1999=100) የሽማፍራዎች ዋጋ መመዘኛ ኢንዱስትሪ በክልል ደረጃ ሲዘጋጅ በዓይነቱ ለሁለተኛ ጊዜ የተዘጋጀ ሲሆን በታህሣሥ 1993 ዓ.ም. መሠረት ያደረገውን የሽማፍራዎች መመዘኛ ኢንዱስትሪ የሚተካ ነው። በአገር አቀፍ ደረጃ ከ1988 ጀምሮና በአዲስ አበባ ከተማ ደረጃ ደግሞ ከ1955 ዓ.ም ጀምሮ በየወሩ ተመሳሳይ ኢንዱስትሪዎች እየተዘጋጁ ለተጠቃሚዎች ሲሰራጩ መቆየታቸው ይታወቃል። እነዚህ 12 የዋጋ መመዘኛ ኢንዱስትሪዎች በአገሪቱ የሚገኙ 11 ክልሎችና የአገር አቀፍን ሪፖርት ጨምሮ የሚሸፍነው የዕቃዎችና የአገልግሎቶችን ክምችት በያዙ ሁለት ዋና ክፍሎች የተከፈሉ ናቸው። እነሱም፡- የምግብና ምግብ ነክ ያልሆኑ መመዘኛ ኢንዱስትሪዎች ሲሆን ምግብ ነክ ያልሆኑ መመዘኛ ኢንዱስትሪ እንደገና በ10 ንዑስ ክፍሎች ይከፈላል። እነዚህም መጠጥ፣ ሲጃራና ትምባሆ፣ ልብስና መጫሚያ፣ የቤት ኪራይ፣ የቤት መሥሪያ ዕቃዎች፣ ወሃና ኢነርጂ፣ የቤት ዕቃዎች፣ የቤት ማስገጫዎች፣ የቤት ቁሳቁስና የቤት ሠራተኛ ደመወዝ፣ ሕክምና፣ መንገድና መገናኛ፣ መዝናኛና ትምህርት፣ የግል ንጽህናና የግል ቋሚ ዕቃዎች እንዲሁም ሌሎች ዕቃዎችና አገልግሎቶች ሲሆኑ የሁሉም ክፍሎች አጠቃላይ ወጤት የሚሆነው ደግሞ የጠቅላላ ዋጋዎች መመዘኛ ኢንዱስትሪ ነው።

በሁሉም ክልሎች የጠቅላላ ዋጋ መመዘኛ ኢንዱስትሪ ስሌት አብዛኛውን የመቶኛ ወጪ ድርሻ የሚይዘው የምግብ መመዘኛ ኢንዱስትሪ ሲሆን በሁሉም የምግብ ዋጋ መመዘኛ ኢንዱስትሪ ዋና ዋና ክፍሎች እህል፣ ጥራጥሬ፣ ዳቦና ሌሎች የተዘጋጁ ምግቦች፣ ሥጋ፣ ወተት፣ ዐይብና ዕንቁላል፣ ዘይትና ቅባቶች፣ አትክልትና ፍራፍሬ፣ ቅመማ ቅመም፣ ድንችና ሌሎች ሥራሥሮች፣ ያልተቆላ ቡናና ሻይ ቅጠል፣ ሌሎች ምግቦች፣ የማስፈጫ አገልግሎትና ከቤት ወጪ የተወሰዱ ምግቦች ናቸው።

ለዋጋ ኢንዱስትሪ የተመረጡት ዕቃዎችና አገልግሎቶች የዋጋ መረጃ የሚሰበሰበው በየዞን/ በየልዩ ወረዳ በናሙና በተመረጡ ወካይ ከተሞች ውስጥ ባሉ የገበያ ቦታዎች ነው። በመሆኑም ከእያንዳንዱ ዞን ሁለት ከተሞች (የገበያ ቦታዎች) የተመረጡ ሲሆን እንደዚሁም በእያንዳንዱ ልዩ ወረዳ አንድ ከተማ (የገበያ ቦታ) በጥናቱ እንዲካተት ተደርጓል።

በእነዚህ ከተሞች ውስጥ ተመድበው ለሚሰሩ መረጃ ሰብሳቢዎች በየበጀት ዓመቱ መጨረሻ በመረጃ አሰባሰብ ዘዴው ላይ ስልጠና የሚሰጥ ሲሆን ለአሰባሰቡ የሚረዱ የመስክ መገልገያ መሣሪያዎች (ሚዛን፣ ሜተር ... ወዘተ) ይሰጣቸዋል። እነዚህ መሣሪያዎችን በመጠቀም በየወሩ የዋጋ መረጃዎችን ከነጋዴዎች ይሰበስባሉ። አንዳንድ ጊዜም አንድ በላተኛ ወይም ገዢ ከነጋዴ ሲገዛ ቢገኝና ለሥራው ተባባሪነቱን ካሳየ መረጃው ከርሱም ይሰበስባል። የችርቻሮ ዋጋ መረጃ የሚሰበሰበው እንደ አውሮፓውያን ዘመን አቆጣጠር ወሩ በገባ ከ1ኛው ቀን አንስቶ አስከ 15ኛው ቀን ነው። የክልል ኢንዱስትሪ ለማስላት ለኢንዱስትሪ ለተመረጡት ዕቃዎችና አገልግሎቶች አማካይ የችርቻሮ ዋጋቸውን የጂኦሜትሪክ ሚን ዘዴ ጥቅም ላይ ወሎአል። የኢንዱስትሪ ሪፖርቱም በየወሩ ለተጠቃሚዎች በዚህ መልክ ይቀርባል።

የአገር አቀፍ የችርቻሮ ዋጋ መመዘኛ ኢንዱስትሪ የሚሰላው እያንዳንዱ ክልል ለአገር አቀፍ የቤተሰብ ወጪ ያለውን የመቶኛ ድርሻ መሠረት በማድረግ ነው። በመሆኑም ለአገር አቀፍ ኢንዱስትሪ ስሌት ከ95 በመቶ በላይ አስተዋጽኦ የሚያደርጉ ክልሎች በቅደም ተከተል ኦሮሚያ፣ አማራ፣ የደቡብ ብሔር ብሔረሰቦችና ሕዝቦች፣ አዲስ አበባና ትግራይ ሲሆኑ የተቀሩት ክልሎች በየወሩ ለሚታየው አገር አቀፍ የችርቻሮ ዋጋ መመዘኛ ኢንዱስትሪ ስሌት የሚኖራቸው አስተዋጽኦ ከአምስት በመቶ የማይበልጥ ነው።

ለችርቻሮ ዋጋ ጥናት በአጠቃላይ 119 የገበያ ቦታዎች የተመረጡ ሲሆን በእያንዳንዱ ክልል የተመረጡ የናሙና ገበያዎች ብዛትና በየኢንዱስትሪዎቻቸው ማዕቀፍ የተካተቱ ዕቃዎች/አገልግሎቶች ብዛት ከዚህ በታች ቀርቦአል።

ሠንጠረዥ ሀ: በጥናቱ የተሸፈኑ ገበያዎችና በኢንዱስትሪ ማዕቀፍ የተካተቱ ዕቃዎች/አገልግሎቶች ብዛት በክልል

Table A: Number of Markets Covered and Basket of Commodities by Region

ተራ ቁጥር	ክልል	የገበያ ቦታዎች ብዛት	በኢንዱስትሪ የተካተቱ ዕቃዎች/አገልግሎቶች ብዛት		Region
			ታህሳስ 1993=100	ታህሳስ 1999=100	
1	ትግራይ	8	114	143	Tigray
2	አፋር	4	85	153	Afar
3	አማራ	20	118	144	Amhara
4	ኦሮሚያ	24	127	161	Oromia
5	ሶማሌ	6	85	122	Somalie
6	ቤኒሻንጉል	6	111	142	Benishangul-Gumuz
7	ጊ.ቤ.ቤ.ሀ	31	130	152	SNNP
8	ጋምቤላ	3	105	103	Gambela
9	ሐረሪ	2	102	158	Harari
10	አዲስ አበባ ከተማ	12	175	193	Addis Ababa City Administration
11	ድራዳዋ አስተዳደር ድምር	3	121	150	Dire Dawa Administrative
		119			Total
Sr.No.		Number of Markets	Basket of Commodities		

ለጠቋሚ አሀዙ ክንዋኔ ዋናው ነገር በጠቋሚ አሀዙ ማዕቀፍ ተካትተው በዋናነት የሚያገለግሉ ዕቃዎችና አገልግሎቶች የመምረጥ ጉዳይ ነው። ጠቋሚ አሀዞች የሚመሠረቱት በአጠቃላይ በናሙና በሚመረጡ ዕቃዎች ላይ ሲሆን በጠቋሚ አሀዙ ማዕቀፍ ውስጥ መካተት የሚገባው ዕቃ መወሰን ግን ሁሌም ቀላል የሚባል ተግባር አይደለም። የተለያየ የአመራረጥ ዘዴ መጠቀም ቢቻልም የሚመረጡት ዕቃዎች ለረጅም ጊዜ የሚኖራቸው ተፈላጊነት፣ በአስተማማኝ ሁኔታ በገበያ ላይ የመገኘታቸው ጉዳይ፣ ሌሎችን ዕቃዎች የመወከል ብቃትና ከሌሎች ምርቶች ጋር ያላቸው ተወዳዳሪነት መሠረት ያደረገ እንዲሆን ይፈለጋል። በአጠቃላይ የተመረጡት ዕቃዎች በበቂ መጠን የመገኘታቸው ሁኔታ፣ በየወቅቱ ተወዳዳሪነታቸውና ዕቃዎችና አገልግሎቶች ምድቡን የመወከላቸው ብቃትን ማረጋገጥ ያስፈልጋል።

ታህሳስ 1999 ዓ.ም. መሠረት ያደረገው የሸማቾች ዋጋ መመዘኛ ኢንዱስትሪ አይነቶችና እያንዳንዱ ዋና ክፍል ያለው የወጪ ድርሻ በገፅ 6 ላይ ይታያል። ይህ ሠንጠረዥ እንደሚያሳየው የምግብ የመቶኛ የወጪ ድርሻ ታህሳስ 1993 ዓ.ም. ከነበረው 60 በመቶ ወደ 57 በመቶ ቀንሷል። በአንጻሩ ደግሞ ምግብ ነክ ያልሆነ መመዘኛ ኢንዱስትሪ ታህሳስ 1993 ዓ.ም. ከነበረው 40 በመቶ የወጪ ድርሻ ወደ 43 በመቶ ከፍ ብሏል። ባጠቃላይ ሲታይ በሁሉም ክልሎች ኢንዱስትሪ ላይ የምግብ የወጪ ድርሻ የማይናቅ ቅናሽ ያሳየ ሲሆን ምግብ ነክ ያልሆኑ የወጪ ድርሻ መጠነኛ እድገት አሳይቷል።

የኅዳር ወር 2002 ዓ.ም. የዋጋ ግሽበት ሁኔታ

ከሠንጠረዥ ቁጥር 10 ስር፣ መረዳት እንደሚቻለው በኅዳር ወር 2002 ዓ.ም. የተመዘገበው አገራዊ አጠቃላይ የዋጋ ግሽበት 10.6 በመቶ ሲሆን ይህ አሁን በኅዳር 2001 ከታየው 42.8 አጠቃላይ የዋጋ ግሽበት ጋር ሲነፃፀር በ32.2 ቅናሽ አሳይቷል። በተመሳሳይ ሁኔታ በኅዳር ወር 2002 ዓ.ም. የተመዘገበው አገራዊ የምግብ የዋጋ ግሽበት 6.1 በመቶ ሲሆን አገራዊ የምግብ ነክ ያልሆኑ የዋጋ ግሽበት ደግሞ 18.9 በመቶ ሆኗል። በኅዳር ወር 2002 ዓ.ም. የተመዘገበው 6.1 በመቶ የምግብ የዋጋ ግሽበት ከኅዳር 2001 ዓ.ም ከታየው 58.7 ጋር ሲነፃፀር በ52.6 በመቶ ቅናሽ አሳይቷል። ለዚህም አገራዊ የምግብ የዋጋ ግሽበት መቀነስ ምክንያት የሆኑት የተለያዩ የምግብ ክፍሎች ማለትም በእህል፣ በጥሬ-ጥሬ፣ በዘይትና ቅባቶች እና በቅመማ ቅመም የዋጋ ኢንዱክሶች ላይ ቅናሽ በመከሰቱ ነው።

የ12 ወራት የምግብና የአጠቃላይ ተንቀሳቃሽ አማካይ የዋጋ ግሽበት ከመጋቢት ወር 2001 ዓ.ም ጀምሮ በተከታታይ ቅናሽ በማሳየት ላይ ይገኛል። ይኸውም በየካቲት ወር 2001 ዓ.ም አጠቃላይ ተንቀሳቃሽ የዋጋ ግሽበቱ 46.1 የነበረ ሲሆን በመጋቢት ወር 2001 ዓ.ም 45.2፣ በሚያዝያ ወር 2001 ዓ.ም 44.3፣ በግንቦት ወር 2001 ዓ.ም 41.6፣ በሰኔ ወር 2001 ዓ.ም 36.4፣ በሐምሌ ወር 2001 ዓ.ም ወር 29.9፣ በነሐሴ ወር 2001 ዓ.ም 24.1፣ በመስከረም ወር 2002 ዓ.ም በ18.7፣ በጥቅምት ወር 2002 ዓ.ም በ14.1 እና በኅዳር ወር 2002 ዓ.ም ወደ10.6 ዝቅ ብሎአል። በተመሳሳይ ሁኔታ የምግብ ተንቀሳቃሽ አማካይ የዋጋ ግሽበትም በየካቲት ወር 2001 ዓ.ም ከነበረበት 61.1 በመጋቢት ወር 2001 ዓ.ም ወደ 59.2፣ በሚያዝያ ወር 2001 ዓ.ም በ57.2፣ በግንቦት ወር 2001 ዓ.ም 52.6፣ በሰኔ ወር 2001 ዓ.ም 44.2፣ በሐምሌ ወር 2001 ዓ.ም 34.2፣ በነሐሴ ወር 2001 ዓ.ም 25.4፣ በመስከረም ወር 2002 ዓ.ም 17.5፣ በጥቅምት ወር 2002 ዓ.ም 11.0 እና በኅዳር ወር 2002 ዓ.ም ወደ 6.1 ዝቅ ማለቱ ተረጋግጧል። የኅዳር ወር 2002 ዓ.ም ምግብ ነክ ያልሆኑ የዋጋ ግሽበት ከኅዳር ወር 2001 ዓ.ም ጋር ሲነፃፀር በ1.5 ዝቅ ብሎአል። ከቅርብ ወራት ጀምሮ ከምግብ ክፍሎች ዳቦና የተዘጋጁ ምግቦች፣ ቅመማ ቅመም፣ ቡናና ሻይ ቅጠል እና ሌሎች ምግቦች ዋጋ ጭማሪ በማስመዘገብ ላይ የሚገኙ ሲሆን በተመሳሳይ ሁኔታ ምግብ ነክ ያልሆኑ የኢንዱስትሪ ክፍሎች ውስጥ ነዳጅ፣ የኮንስትራክሽን ዕቃዎች፣ ልብስና መጫሚያ፣ የቤት ዕቃዎችና የቤት ማስገጫዎች እና የግል ንጽህና ዕቃዎች ዋጋ ጨምሮአል። በቅርቡ የታየው የዋጋ ጭማሪ ግን ባለፈው ዓመት ከታየው ጭማሪ ጋር ሲነፃፀር የአሁኑ በጣም መቀነሱን ጠቋሚ አሃዙ ያመለክታል።

ሠንጠረዥ (መ) የሚያሳየው የዋጋ ግሽበት ሁኔታ ካለፈው ዓመት ተመሳሳይ ወር ጋር በማነፃፀር ነው። ከሠንጠረዥ መረዳት እንደሚቻለው የኅዳር ወር 2002 ዓ.ም አጠቃላይ የዋጋ ግሽበት ካለፈው ዓመት ኅዳር ወር 2001 ዓ.ም ጋር ሲነፃፀር በ0.6 በመቶ ከፍ ብሎአል። ለዚህ ጭማሪ ምክንያቱ በኅዳር ወር 2002 ዓ.ም የተመዘገበው አጠቃላይ የዋጋ መመዘኛ ኢንዱስትሪ 176.1 በመቶ በኅዳር ወር 2001 ከተመዘገበው 175.1 በመቶ አጠቃላይ የዋጋ መመዘኛ ኢንዱስትሪ በልጦ በመገኘቱ ነው። የምግብ ዋጋ ግሽበት የኅዳር ወር 2002 ዓ.ም ካለፈው ዓመት ከኅዳር ወር 2001 ዓ.ም ጋር ሲነፃፀር በ8.0 በመቶ ቅናሽ አሳይቶአል። ለዚህ ቅናሽ ምክንያቱ በኅዳር ወር 2002 ዓ.ም የተመዘገበው የምግብ ዋጋ መመዘኛ ኢንዱስትሪ 185.9 በመቶ በኅዳር ወር 2001 ዓ.ም ከተመዘገበው 202.2 በመቶ የምግብ ዋጋ መመዘኛ ኢንዱስትሪ አንሶ በመገኘቱ ነው። ሆኖም ምግብ ነክ ያልሆኑ የኢንዱስትሪ ክፍሎች የዋጋ ግሽበት የኅዳር ወር 2002 ዓ.ም ካለፈው ዓመት ኅዳር ወር 2001 ዓ.ም ጋር ሲነፃፀር የ17.2 በመቶ ጭማሪ አሳይቷል።

November 2009 Inflation Rate

As it is indicated in Table 'C' below the country level overall inflation rate (annual change based on 12 months Moving Average) stood at 10.6 percent in November 2009. This rate is 32.2 percentage points lower than the corresponding annual average rate of 42.8 percent at November 2008. Similarly, the country level food inflation rate stood at 6.1 percent and the country level Non-food inflation rate stood at 18.9 percent in November 2009. The 6.1 percent Country level food inflation rate in November 2009 is 52.6 percentage points lower than that of 58.7 percent inflation rate at November 2008. This decrease in the Food inflation rate was due to the decline in price indices of the Food components like Cereals, Pulses, Oils and Fats and Spices.

The 12 months moving average General and Food inflation showed a decline starting in March 2009 and continued the trend in November 2009. In this regard, the General moving average inflation rate was 46.1 in February 2009 and consequently declined to 45.2 percent in March 2009, 44.3 in April 2009, 41.6 in May 2009, 36.4 percent in June 2009, 29.9 percent in July 2009, 24.1 percent in August 2009, 18.7 percent in September 2009, 14.1 percent in October 2009 and 10.6 percent in November 2009. In a similar way, the Food moving average inflation rate was declined from 61.1 percent in February 2009 to 59.2 percent in March 2009, 57.2 percent in April 2009, 52.6 percent in May 2009, 44.2 in June 2009, 34.2 percent in July 2009, 25.4 percent in August 2009, 17.5 percent in September 2009, 11.0 percent in October 2009 and 6.1 percent in November 2009. The Moving Average Inflation rate of Non-food components has decreased by 1.5 percentage points as compared to the one observed in November 2008. In the recent few months, among the food components, the prices of Bread and Other Prepared Foods, Spices, Coffee and Tea leaves and Other food items are on the rise. Among the non-food components, the prices of Fuel, Construction materials, Clothing and Footwear, Furniture and Furnishing and Personal care and effects are increasing. However, as the numerical figures indicate the increase in prices in recent months are much lower than the situation observed last year.

Table (D) shows Inflation rate based on last year's similar month comparison. As can be seen from the table the November 2009 General year-on-year inflation has increased by 0.6 percent as compared to the one observed in November 2008. The 0.6 percent rise in General inflation rate is due to the fact that the General Consumer Price Index (CPI) of 176.1 percent observed in November 2009 was higher than the corresponding 175.1.0 percent General Consumer Price Index (CPI) observed in November 2008. The year-on-year Food inflation declined by 8.0 percent in November 2009 as compared to the one observed in November 2008. The reason for the decline in the food Inflation rate was that the 185.9 percent Food Consumer price Index (CPI) observed in November 2009 was less than the corresponding 202.2 percent Food Consumer Price Index (CPI) observed in November 2008. However, the Non-Food inflation increased by 17.2 percent in November 2009 as compared to the one observed in November 2008.

ሠንጠረዥ ሐ: በአገር አቀፍ ደረጃ የዋጋ ግሽበት ሁኔታ

Table C: The Country Level General Inflation Rate

በጀት ዓመት (ወር)	የዋጋ ግሽበት ሁኔታ			Budget Year and months
	አጠቃላይ የዋጋ ግሽበት	የምግብ የዋጋ ግሽበት	የምግብ ነክ ያልሆኑ የዋጋ ግሽበት	
የ2000 በጀት ዓመት በወራት				The 2007/8 Budget Year in Months
ዓመታዊ አማካይ (ሐምሌ 1999 - ሰኔ 2000)	18.4	23.6	11.6	Annual Average (July 2007 - June 2008)
ዓመታዊ አማካይ (ሐምሌ 2000 - ሰኔ 2001)	40.6	54.1	21.0	Annual Average (July 2008 - June 2009)
ጥቅምት 2001	40.3	55.7	18.8	October 2008
ኅዳር 2001	42.8	58.7	20.4	November 2008
ታህሳስ 2001	44.4	60.0	21.9	December 2008
ጥር 2001	45.6	60.9	23.4	January 2009
የካቲት 2001	46.1	61.1	24.2	February 2009
መጋቢት 2001	45.2	59.2	24.4	March 2009
ሚያዝያ 2001	44.3	57.2	24.6	April 2009
ግንቦት 2001	41.6	52.6	24.6	May 2009
ሰኔ 2001	36.4	44.2	23.7	June 2009
ሐምሌ 2001	29.9	34.2	22.9	July 2009
ነሐሴ 2001	24.1	25.4	21.8	August 2009
መስከረም 2002	18.7	17.5	20.9	September 2009
ጥቅምት 2002	14.1	11.0	19.9	October 2009
ኅዳር 2002	10.6	6.1	18.9	November 2009
Budget Year	Inflation Rate			
	Overall Inflation rate	Food Inflation rate	Non-food Inflation rate	

Revised (From January 2007 – November 2007)

ሠንጠረዥ መ: የዘንድሮውና የአምናው ተመሳሳይ ወሮች የሽማግሌት ዋጋ መመዘኛ ኢንዱስትሪ ለውጥ ንፅፅር በአገር አቀፍ ደረጃ ማጠቃለያ

Table D: Summary of Comparison of CPI Movements, Current vs. Last year's Similar Months at Country Level

በጀት ዓመት (ወር)	የዋጋ ግሽበት ሁኔታ ካለፈው ዓመት ተመሳሳይ ወር ጋር ሲነፃፀር			Budget Year and months
	አጠቃላይ የዋጋ ግሽበት	የምግብ የዋጋ ግሽበት	የምግብ ነክ ያልሆኑ የዋጋ ግሽበት	
የ2000 በጀት ዓመት በወራት				The 2007/8 Budget Year in Months
ዓመታዊ አማካይ (ሐምሌ 1999 - ሰኔ 2000)	24.9	34.2	12.3	Annual Average (July 2007 - June 2008)
ዓመታዊ አማካይ (ሐምሌ 2000 - ሰኔ 2001)	38.7	48.6	24.1	Annual Average (July 2008 - June 2009)
ጥቅምት 2001	55.4	72.3	29.5	October 2008
ኅዳር 2001	49.4	63.3	28.2	November 2008
ታህሳስ 2001	39.3	46.7	27.9	December 2008
ጥር 2001	37.8	44.8	27.0	January 2009
የካቲት 2001	32.8	38.9	23.5	February 2009
መጋቢት 2001	23.7	26.5	19.2	March 2009
ሚያዝያ 2001	23.4	25.4	20.3	April 2009
ግንቦት 2001	14.2	11.6	18.7	May 2009
ሰኔ 2001	2.7	-3.4	15.0	June 2009
ሐምሌ 2001	-3.7	-12.4	15.4	July 2009
ኅሐሴ 2001	-3.9	-12.8	15.3	August 2009
መስከረም 2002	-4.1	-13.6	16.6	September 2009
ጥቅምት 2002	-3.7	-12.7	14.8	October 2009
ኅዳር 2002	0.6	-8.0	17.2	November 2009
Budget Year	Inflation Rate based on last year's similar month comparison			
	Overall Inflation rate	Food Inflation rate	Non-food Inflation rate	

Revised (From January 2007 – November 2007)

የዘንድሮውና የአምናው ተመሳሳይ ወሮች የችርቻሮ ዋጋ መመዘኛ ጠቋሚ አሀዝ ንፅፅር በአገር አቀፍ ደረጃ

Comparison of CPI Movements, Current vs Last year's Similar Months at Country Level

ከሠንጠረዥ 1(ሀ) መረዳት እንደሚቻለው የኅዳር ወር 2002 ዓ.ም የአገር አቀፍ ጠቅላላ የችርቻሮ ዋጋ ኢንዱክስ ከኅዳር ወር 2001 ዓ.ም ጠቅላላ ኢንዱክስ ጋር ሲነፃፀር በ0.6 ከመቶ ጭማሪ አሳይቶአል። ለዚህ ጭማሪ ምክንያት የሆኑት መጠጥ 05.6 ከመቶ፣ ሲጋራና ትምባሆ 21.8 ከመቶ፣ ልብስና መጫሚያ 025.7 ከመቶ፣ የቤት ኪራይ፣ የቤት መሥሪያ ዕቃዎች፣ ወሃና ኢነርጂ 015.7 ከመቶ፣ የቤት ዕቃዎች፣ ቤት ማስገጫዎች፣ የቤት ቁሳቁስና የቤት ሠራተኛ ደመወዝ 017.9 ከመቶ፣ ህክምና 14.6 ከመቶ፣ ትራንስፖርትና መገናኛ 013.1 ከመቶ፣ መዝናኛና ትምህርት 013.9 ከመቶ፣ የግል ንጽቅና የግል ጁሚ ዕቃዎች 030.9 ከመቶ እና ሌሎች ዕቃዎች 08.6 ከመቶ በየኢንዱክሶቻቸው ላይ ጭማሪ አሳይተዋል። በሌላ በኩል የምግብ ኢንዱክስ የ8.0 ከመቶ ቅናሽ አሳይቶአል።

The November 2009 Country Level Consumer Price Index has decreased by 0.6 percent as compared to November 2008 (Table 1(a)). This increase in the General Consumer Price Index is attributed to the rise observed in the indices of Beverages by 5.6 percent, Cigarettes and Tobacco by 21.8 percent, Clothing and Footwear by 25.7 percent, House Rent, Construction Materials, Water and Fuel and Power by 15.7 percent, Furniture, Furnishings, Household Equipment and Operation by 17.9 percent, Medical Care and Health by 14.6 percent, Transport and Communication by 13.1 percent, Recreation, Entertainment and Education by 13.9 percent, Personal Care Effects by 30.9 percent and Miscellaneous Goods by 8.6 percent. On the other hand, the food index declined by 8.0 percent.

ሠንጠረዥ 1(ለ) እንደሚያሳየው ለጠቅላላ ምግብ ኢንዱክስ 8.0 ከመቶ መቀነስ ምክንያት የሆኑት የምግብ ክፍሎች ማለትም አህል 021.4 ከመቶ፣ ጥራጥራ 06.4 ከመቶ፣ ዘይትና ቅባቶች 05.1 ከመቶ እና ቅመማ ቅመም 038.8 ከመቶ በኢንዱክሶቻቸው ላይ ቅናሽ በማሳየታቸው ነው። በሌላ በኩል ዳቦና ሌሎች የተዘጋጁ ምግቦች 01.0 ከመቶ፣ ሥጋ 07.2 ከመቶ፣ ወተት፣ አይብና ዕንቁላል 015.5 ከመቶ፣ አትክልትና ፍራፍሬ 015.8 ከመቶ፣ ድንችና ሌሎች ስራ ስሮች 010.7 ከመቶ፣ ያልተቆላ ቡናና ሻይ ቅጠል 026.4 ከመቶ፣ ሌሎች ምግቦች 026.0 ከመቶ፣ የማስራጫ አገልግሎት 018.7 ከመቶ እና ከቤት ዉጪ የተወሰዱ ምግቦች 016.5 ከመቶ ዕድገት በየኢንዱክሶቻቸው ላይ አሳይተዋል።

The 8.0 percent decline in the Food index was observed due to the fall in the indices of the components of Food index (Table 1(b)) namely: Cereals by (21.4 percent), Pulses (6.4 percent), oils and Fats 5.1 percent) and Spices by (38.8 percent). On the other hand, rises were observed in the indices of Bread and Other Prepared Food (1.0 percent), Meat (7.2 percent), Milk, Cheese and Eggs (15.5 percent), Vegetables and fruits (15.8 percent), Potatoes, Other Tubers and Stems (10.7 percent), Coffee and Tea Leaves (26.4 percent), other Food Items (26.0 percent), Milling Charge by (18.7 percent), and Food Taken Away from Home (16.5 percent) respectively.

ሠንጠረዥ (መ) የሚያሳየው የዋጋ ግሽበት ሁኔታ ካለፈው ዓመት ተመሳሳይ ወር ጋር በማነፃፀር ነው። ከሠንጠረዥ መረዳት እንደሚቻለው የኅዳር ወር 2002 ዓ.ም አጠቃላይ የዋጋ ግሽበት ካለፈው ዓመት ኅዳር ወር 2001 ዓ.ም ጋር ሲነፃፀር በ0.6 ከመቶ ከፍ ብሎአል። ለዚህ ጭማሪ ምክንያቱ በኅዳር ወር 2002 ዓ.ም የተመዘገበው አጠቃላይ የዋጋ መመዘኛ ኢንዱክስ 176.1 ከመቶ በኅዳር ወር 2001 ከተመዘገበው 175.1 ከመቶ አጠቃላይ የዋጋ መመዘኛ ኢንዱክስ በልጦ በመገኘቱ ነው። የምግብ ዋጋ ግሽበት የኅዳር ወር 2002 ዓ.ም ካለፈው ዓመት ከኅዳር ወር 2001 ዓ.ም ጋር ሲነፃፀር በ8.0 ከመቶ ቅናሽ አሳይቶአል። ለዚህ ቅናሽ ምክንያቱ በኅዳር ወር 2002 ዓ.ም የተመዘገበው የምግብ ዋጋ መመዘኛ ኢንዱክስ 185.9 ከመቶ በኅዳር ወር 2001 ዓ.ም ከተመዘገበው 202.2 ከመቶ የምግብ ዋጋ መመዘኛ ኢንዱክስ አንሶ በመገኘቱ ነው። ሆኖም ምግብ ነክ ያልሆኑ የኢንዱክሱ ክፍሎች የዋጋ ግሽበት የኅዳር ወር 2002 ዓ.ም ካለፈው ዓመት ኅዳር ወር 2001 ዓ.ም ጋር ሲነፃፀር የ17.2 በመቶ ጭማሪ አሳይቷል።

Table (D) shows Inflation rate based on last year's similar month comparison. As can be seen from the table the November 2009 General year-on-year inflation has increased by 0.6 percent as compared to the one observed in November 2008. The 0.6 percent rise in General inflation rate is due to the fact that the General Consumer Price Index (CPI) of 176.1 percent observed in November 2009 was higher than the corresponding 175.1 percent General Consumer Price Index (CPI) observed in November 2008. The year-on-year Food inflation declined by 8.0 percent in November 2009 as compared to the one observed in November 2008. The reason for the decline in the food Inflation rate was that the 185.9 percent Food Consumer price Index (CPI) observed in November 2009 was less than the corresponding 202.2 percent Food Consumer Price Index (CPI) observed in November 2008. However, the Non-Food inflation increased by 17.2 percent in November 2009 as compared to the one observed in November 2008.

**የዘንድሮውና የአምናው ተመሳሳይ ወሮች
የችርቻሮ ዋጋ መመዘኛ ጠቋሚ አሀዝ ንፅፅር በአገር አቀፍና በክልሎች ደረጃ**
Comparison of CPI Movements, Current vs Last year at Country and
Regional Levels

ከሠንጠረዥ 2(ሀ) መረዳት እንደሚቻለው የኅዳር ወር 2002 ዓ.ም የአገር አቀፍ ጠቅላላ የችርቻሮ ዋጋ መመዘኛ ኢንዱክስ ከኅዳር ወር 2001 ዓ.ም ጠቅላላ ኢንዱክስ ጋር ሲነፃፀር በ0.6 ከመቶ ጭማሪ አሳይቶአል። ለዚህ ጭማሪ አስተዋጽኦ ያደረጉት አዲስ አበባ 8.2 ከመቶ፣ አፋር 13.1 ከመቶ፣ ድሬዳዋ 3.8 ከመቶ፣ ሐረሪ 3.7 ከመቶ፣ ደቡብ ብሄሮች ብሄረሰቦችና ሕዝቦች 4.8 ከመቶ እና ሶማሌ 6.8 ከመቶ በኢንዱክሶቻቸው ላይ ጭማሪ በማሳታቸው ነው። በሌላ በኩል አማራ 4.3 ከመቶ፣ ቤኔሻንጉል ጉሙዝ 4.9 ከመቶ፣ ጋምቤላ 5.6 ከመቶ፣ ኦሮሚያ 0.8 ከመቶ እና ትግራይ 1.8 ከመቶ በጠቅላላ ኢንዱክሶቻቸው ላይ ቅናሽ አሳይተዋል።

Table 2(a) also displays that the November 2009 Country level General Consumer Price Index has increased by 0.6 percent as compared to November 2008. This increase was attributed to the rise in the indices of its constituent regions; namely: Addis Ababa 8.2 percent, Afar 13.1 percent, Dire Dawa 3.8 percent, Harari 3.7 percent, SNNP by 4.8 percent and Somali 6.8 percent. On the other hand, a decline in the General consumer price indices was observed in the regions of Amhara 4.3 percent, Benishangul Gumuz 4.9 percent, Gambela 5.6 percent, Oromia 0.8 percent and Tigray 1.8 percent.

ሠንጠረዥ 2(ለ) እንደሚያሳየው አገር አቀፍ ጠቅላላ የምግብ ዋጋ መመዘኛ ኢንዱክስ 8.0 ከመቶ መቀነስ ምክንያት የሆኑት አማራ በ13.2 ከመቶ፣ ቤኔሻንጉል ጉሙዝ በ14.2 ከመቶ፣ ቡድሬዳዋ በ2.2 ከመቶ፣ ጋምቤላ በ9.6 ከመቶ፣ ሐረሪ በ3.5 ከመቶ፣ ኦሮሚያ 9.4 ከመቶ፣ ደቡብ ብሄሮች፣ ብሄረሰቦችና ሕዝቦች 2.7 ከመቶ እና ትግራይ 10.6 ከመቶ በምግብ ኢንዱክሶቻቸው ላይ ቅናሽ በማሳየታቸው ነው። በሌላ በኩል አዲስ አበባ በ1.7 ከመቶ፣ አፋር በ6.5 ከመቶ እና ሶማሌ በ3.3 ከመቶ በኢንዱክሶቻቸው ላይ ጭማሪ አሳይተዋል።

Table 2(b) reveals that the 8.0 percent decrease in the country level Food index was observed due to the fall in the indices of the regions namely: Amhara 13.2, Benishangul Gumuz 14.2 percent, Dire Dawa 2.2 percent, Gambella 9.6 percent, Harari 3.5 percent, Oromia 9.4 percent, SNNP 2.7 percent, and Tigray 10.6 percent. On the other hand, increases were observed in the indices of Addis Ababa 1.7 percent, Afar 6.5 percent and Somali 3.3 percent.

ሠንጠረዥ 1ሀ፡- ጠቅላላ የ ሽግግር ዋጋ መመዘኛ ኢንዱስትሪ ቢሮ የተካተቱ ክፍሎች በአገር አቀፍ ደረጃ
 ታህሳስ 1999 = 100

Table 1a: General Consumer Price Index and Its Components at Country Level
 December 2006 = 100

ወርና ዓመት	ጠቅላላ ኢንዱስትሪ	ጠቅላላ የምግብ ኢንዱስትሪ	ጠቅላላ የምግብ ከፍተኛ ኢንዱስትሪ	Non-food Consumer Price Index Components											Month and Year
				መጠን	ቢዳራና ትምብሆ	ላብሳና መጓጊያ	የቤት ኪራይ፣ የቤት መሥሪያ ስቃዎች፣ውሃ፣ ነጻጅናሃይል	የቤት ስቃዎች የቤት ግንባታዎች የቤት ተሳታፊነት የቤት ሠራተኛ ደመወዝ	ሕክምና	ትራንስፖርትና መገናኛ	መዝናኛና ትምህርት	የግል ንጹህና የግል ጽጌ ስቃዎች	ሌሎች ስቃዎች		
	General Index	Food Total	Non-Food Total	Beverages	Cigarettes and Tobacco	Clothing and Footwear	House Rent, Construction Materials, Water, and Fuel and Power	Furniture, Furnishings, Household Equipment and Operation	Medical Care and Health	Transport and Communication	Recreation, Entertainment and Education	Personal Care and Effects	Miscellaneous Goods		
ታህሳስ 1999	100.0	100.0	100.0	100.0	100.0	100.0	100.0	100.0	100.0	100.0	100.0	100.0	100.0	100.0	December 2006
ሐምሌ 1999 - ሰኔ 2000	126.9	137.2	113.3	113.5	107.8	117.0	112.0	125.5	111.9	105.3	106.9	112.6	104.7	104.7	July 2007 - June 2008
ሐምሌ 2000 - ሰኔ 2001	173.1	198.0	140.1	175.8	141.2	149.8	136.6	159.8	128.2	112.8	124.9	142.2	115.5	115.5	July 2008 - June 2009
2001															2008/2009
ጥቅምት 2001	182.0	214.3	139.2	176.3	132.6	141.7	138.2	155.6	125.7	124.2	121.4	134.5	115.0	115.0	October "
ገዳር 2001	175.1	202.2	139.2	175.2	133.5	146.6	136.1	157.2	125.8	120.0	123.6	138.0	115.0	115.0	November "
ታህሳስ 2001	165.0	184.3	139.4	174.3	136.0	148.6	136.7	157.5	124.8	113.6	124.0	137.2	113.6	113.6	December "
ጥር 2001	165.6	185.3	139.5	177.0	139.7	150.4	136.3	158.1	126.3	109.0	124.8	138.6	113.4	113.4	January 2009
የካቲት 2001	167.1	186.1	141.8	178.1	148.1	156.4	137.0	163.5	128.1	107.5	126.4	144.4	114.3	114.3	February "
መጋቢት 2001	167.2	185.9	142.5	177.4	151.9	158.4	136.5	165.1	131.8	107.7	128.7	148.4	116.3	116.3	March "
ሚያዝያ 2001	169.2	187.8	144.6	178.7	153.1	160.8	139.0	167.7	132.3	108.3	131.0	152.3	116.9	116.9	April "
ግንቦት 2001	168.8	185.6	146.4	178.9	154.9	162.8	140.6	169.3	136.1	111.3	131.7	153.2	119.6	119.6	May "
ሰኔ 2001	171.2	188.6	148.0	181.3	157.1	165.7	141.2	170.3	139.7	115.5	133.2	158.8	120.8	120.8	June "
2002															2009/2010
ሐምሌ 2001	173.3	189.8	151.5	182.8	159.4	169.5	144.6	174.6	140.2	121.7	136.7	163.0	121.9	121.9	July 2009
ኔሐሴ 2001	175.1	190.4	154.8	184.4	158.0	173.6	148.4	177.8	139.5	123.2	138.9	166.3	124.7	124.7	August "
መስከረም 2002	176.6	190.5	158.1	185.0	157.5	176.4	152.8	180.7	141.0	127.5	141.6	170.8	125.1	125.1	September "
ጥቅምት 2002	175.3	186.9	159.9	186.0	160.6	179.0	154.6	181.2	143.2	129.7	142.0	172.5	125.5	125.5	October "
ገዳር 2002	176.1	185.9	163.1	185.0	162.6	184.2	157.5	185.3	144.2	135.7	140.8	180.6	124.9	124.9	November "

ጠቅላይ ልማት ሚኒስቴር የኢትዮጵያ ጠቅላይ ልማት ቢሮ ለጠቅላይ ልማት ሚኒስቴር
 ጋራ 1999 = 100

Table 2a: Summary of General Consumer Price Indices at Country and Regional Levels
 December 2006=100

ወር ዓመት	Reporting Level												Month and Year	
	Eth.	A.A.	Afar	Amhara	B.Gumuz	D.Dawa	Gambela	Harari	Oromia	SNNP	Somalia	Tigray		
ታህሳስ 1999	100.0	100.0	100.0	100.0	100.0	100.0	100.0	100.0	100.0	100.0	100.0	100.0	100.0	December 2006
ሐምሌ 1999 - ሰኔ 2000	126.9	121.8	124.3	127.8	137.7	125.6	123.7	119.1	129.0	125.6	118.5	130.1	130.1	July 2007 - June 2008
ሐምሌ 2000 - ሰኔ 2001	173.1	157.6	158.3	172.1	193.9	167.6	193.2	169.5	179.5	173.9	170.8	183.0	183.0	July 2008 - June 2009
2001														2008/2009
ጥቅምት 2001	182.0	160.8	164.6	185.1	204.7	169.8	219.7	173.6	187.9	181.1	175.1	198.5	198.5	October "
ገብር 2001	175.1	159.7	159.2	179.9	200.6	167.4	194.6	169.4	179.8	172.3	170.1	187.8	187.8	November "
ታህሳስ 2001	165.0	155.0	152.1	166.5	186.9	166.5	180.9	166.1	168.2	164.9	154.8	177.8	177.8	December "
ጥር 2001	165.6	153.2	152.3	164.6	178.9	164.9	176.3	165.4	171.7	164.9	164.3	174.3	174.3	January 2009
ፀደቅ 2001	167.1	155.0	153.8	164.8	181.3	167.8	178.5	169.5	173.6	166.2	169.9	174.8	174.8	February "
ጠቅላይ 2001	167.2	156.6	154.1	163.5	184.3	168.4	177.2	169.5	173.8	166.5	169.3	176.9	176.9	March "
ኅዳር 2001	169.2	159.0	156.7	165.0	184.5	169.5	180.5	170.1	175.5	170.3	171.9	178.0	178.0	April "
ግንቦት 2001	168.8	160.6	156.8	163.4	184.4	169.7	186.2	170.6	174.9	171.1	173.5	173.1	173.1	May "
ሰኔ 2001	171.2	160.9	158.7	164.5	188.3	170.5	191.6	174.7	178.8	172.6	179.5	175.8	175.8	June "
2002														2009/2010
ሐምሌ 2001	173.3	164.0	161.5	169.6	198.5	171.3	197.8	177.4	178.8	174.7	178.8	180.2	180.2	July 2009
ኔሐሴ 2001	175.1	166.1	165.3	171.3	199.6	173.9	200.7	176.0	180.3	177.1	176.5	182.6	182.6	August "
መስከረም 2002	176.6	172.2	173.7	174.3	199.5	175.3	193.9	175.5	180.6	178.4	181.1	181.3	181.3	September "
ጥቅምት 2002	175.3	172.9	176.0	173.4	191.5	175.2	185.6	179.7	176.0	180.3	185.2	185.8	185.8	October "
ገብር 2002	176.1	172.8	180.0	172.1	190.8	173.7	183.8	175.6	178.3	180.5	181.7	184.5	184.5	November "

ሠንጠረዥ 3 ሀ:- ጠቅላላ የሽግግር ዋጋ መመዘኛ ኢንዱስትሪ ቢሥሩ የተካተቱ ክፍሎች ለአዲስ አበባ ከተማ መስተዳደር
 ታህሳስ 1999 = 100

Table 3a: General Consumer Price Index and Its Components for Addis Ababa City Administration
 December 2006 = 100

ወርና ዓመት	ጠቅላላ ኢንዱስትሪ	ጠቅላላ የምግብ ኢንዱስትሪ	ጠቅላላ የምግብ ካልሆኑ ኢንዱስትሪ	Non-food Consumer Price Index Components											Month and Year
				መጠጥ	ቢዳራና ትምባሆ	ላብስና መጫጊያ	የቤት ኪራይ/የቤት መሥሪያ ስቃዎች+ውሃ/ነጻጅና የይል	የቤት ስቃዎች/የቤት ግብአቶች/የቤት ተሳታፊዎች/የቤት ሠራተኛ ደመወዝ	እኩምና	ትራንስፖርትና መገናኛ	መዝናኛና ትምህርት	የግል ንጽባናና የግል ጽግራ ስቃዎች	ሌሎች ስቃዎች		
General Index	Food Total	Non-Food Total	Beverages	Cigarettes and Tobacco	Clothing and Footwear	House Rent, Construction Materials, Water, and Fuel and Power	Furniture, Furnishings, Household Equipment and Operation	Medical Care and Health	Transport and Communication	Recreation, Entertainment and Education	Personal Care and Effects	Miscellaneous Goods			
ታህሳስ 1999	100.0	100.0	100.0	100.0	100.0	100.0	100.0	100.0	100.0	100.0	100.0	100.0	100.0	100.0	December 2006
ሐምሌ 1999 - ሰኔ 2000	121.8	134.8	112.8	127.4	108.7	127.9	106.2	132.3	124.3	104.4	118.6	104.7	104.7	104.7	July 2007 - June 2008
ሐምሌ 2000 - ሰኔ 2001	157.6	190.7	134.5	177.8	156.8	164.4	120.6	165.7	146.0	114.9	121.7	146.6	124.8	124.8	July 2008 - June 2009
2001															2008/2009
ጥቅምት 2001	160.8	196.8	135.8	177.4	129.0	158.1	126.6	161.7	145.8	123.9	114.8	140.9	121.5	121.5	October "
ኅዳር 2001	159.7	194.8	135.3	177.7	144.3	160.0	121.8	165.9	145.8	122.3	119.7	144.0	121.6	121.6	November "
ታህሳስ 2001	155.0	184.8	134.4	174.7	163.6	162.9	121.1	163.5	145.2	116.4	124.2	142.0	121.8	121.8	December "
ጥር 2001	153.2	181.9	133.3	174.3	172.0	164.5	118.5	164.7	145.9	113.0	123.9	143.0	123.1	123.1	January 2009
የካቲት 2001	155.0	183.4	135.2	178.3	179.0	169.8	119.1	168.5	144.1	113.0	127.0	148.1	123.1	123.1	February "
መጋቢት 2001	156.6	186.0	136.2	179.4	183.1	172.5	119.2	170.5	145.9	113.0	128.8	152.1	121.3	121.3	March "
ሚያዝያ 2001	159.0	189.4	137.9	181.5	180.2	178.1	119.6	172.2	146.1	112.9	130.1	155.0	132.1	132.1	April "
ግንቦት 2001	160.6	191.0	139.5	180.9	170.3	176.7	121.2	174.2	148.6	117.4	131.3	156.2	134.4	134.4	May "
ሰኔ 2001	160.9	189.3	141.1	182.6	173.5	175.0	123.0	173.6	156.2	122.0	130.6	158.8	139.1	139.1	June "
2002															2009/2010
ሐምሌ 2001	164.0	191.8	144.7	187.6	173.2	179.7	125.3	174.0	156.2	132.3	130.9	158.3	142.1	142.1	July 2009
ክለሳ 2001	166.1	193.5	147.1	190.0	163.8	184.6	126.2	178.6	157.6	134.0	133.4	162.2	149.1	149.1	August "
መስከረም 2002	172.2	203.2	150.7	193.8	170.7	188.1	131.8	178.5	159.2	138.5	131.5	164.5	155.7	155.7	September "
ጥቅምት 2002	172.9	201.7	153.0	193.2	170.3	188.6	131.6	185.3	159.6	141.3	141.0	168.4	158.5	158.5	October "
ኅዳር 2002	172.8	198.2	155.1	192.6	173.5	188.4	133.3	187.9	162.0	148.3	139.1	172.5	155.8	155.8	November "

ሠንጠረዥ 3ሀ:- ጠቅላላ የሽግግር ዋጋ መመዘኛ ኢንዱስትሪ ቢሥሩ የተካተቱ ክፍሎች ለአዲስ አበባ ከተማ መስተዳደር

ታህሳስ 1999 = 100

Table 4a: General Consumer Price Index and Its Components for the Afar Regional State
December 2006 = 100

ወርና ዓመት	ጠቅላላ ኢንዱክስ General Index	ጠቅላላ የምግብ ኢንዱክስ Food Total	ጠቅላላ የምግብ ከተማ ኢንዱክስ Non-Food Total	የምግብ ከተማ የኢንዱክስ ክፍሎች Non-food Consumer Price Index Components											Month and Year
				መጠጥ Beverages	ቤዳራና ትምባሆ Cigarettes and Tobacco	ላብና መጫጫያ Clothing and Footwear	የቤት ኪራይ የቤት መሥሪያ ስታምፕ+ውሃ ነጻጅናሃይል House Rent, Construction Materials, Water, and Fuel and Power	የቤት ስታምፕ የቤት ግንባታዎች የቤት ተሳታፊዎች የቤት ሠራተኛ ደመወዝ Furniture, Furnishings, Household Equipment and Operation	ሕክምና Medical Care and Health	ትራንስፖርትና መገናኛ Transport and Communication	መዝናኛና ትምህርት Recreation, Entertainment and Education	የግል ንጹህና የግል ጽጌ ስታምፕ Personal Care and Effects	ሌሎች ስታምፕ Miscellaneous Goods		
ታህሳስ 1999	100.0	100.0	100.0	100.0	100.0	100.0	100.0	100.0	100.0	100.0	100.0	100.0	100.0	100.0	December 2006
ሐምሌ 1999 - ሰኔ 2000	124.3	136.1	110.2	109.2	102.5	114.5	107.3	113.8	100.6	124.4	92.2	107.2	101.5	101.5	July 2007 - June 2008
ሐምሌ 2000 - ሰኔ 2001	158.3	189.5	121.3	136.1	131.5	130.8	110.0	143.4	109.7	112.6	107.8	122.5	106.9	106.9	July 2008 - June 2009
2001															2008/2009
ጥቅምት 2001	164.6	200.0	122.4	129.7	132.5	129.4	112.9	139.3	116.3	133.1	104.4	121.1	106.6	106.6	October "
ገዳር 2001	159.2	192.5	119.6	129.7	132.8	128.6	108.6	139.8	112.5	117.7	101.9	119.7	106.7	106.7	November "
ታህሳስ 2001	152.1	180.2	118.7	129.7	132.8	126.8	108.5	141.0	107.2	106.0	107.6	119.6	106.7	106.7	December "
ጥር 2001	152.3	180.1	119.4	129.7	136.8	131.6	107.8	141.0	106.8	97.7	109.7	122.3	106.7	106.7	January 2009
የካቲት 2001	153.8	182.1	120.1	134.0	136.8	133.6	107.7	141.2	106.8	97.7	115.0	123.1	107.4	107.4	February "
መጋቢት 2001	154.1	181.5	121.5	137.9	133.9	134.0	108.0	146.6	115.5	97.7	116.1	125.4	108.6	108.6	March "
ሚያዝያ 2001	156.7	185.0	123.1	142.3	132.6	133.6	109.9	152.5	112.7	97.7	115.4	127.7	109.0	109.0	April "
ግንቦት 2001	156.8	185.3	122.9	149.6	132.6	133.7	107.5	154.4	114.2	103.4	115.5	125.4	109.6	109.6	May "
ሰኔ 2001	158.7	187.2	124.9	151.5	133.9	130.8	113.1	153.7	126.5	107.8	112.5	128.0	108.1	108.1	June "
2002															2009/2010
ሐምሌ 2001	161.5	188.4	129.5	159.3	133.9	139.0	118.5	151.9	126.9	114.7	113.1	130.4	109.7	109.7	July 2009
ኔሐሴ 2001	165.3	195.1	130.0	153.0	134.0	144.6	116.8	151.7	126.9	116.7	110.6	129.1	111.1	111.1	August "
መስከረም 2002	173.7	201.6	140.6	155.0	133.5	143.0	137.7	165.4	119.3	124.3	111.5	130.3	110.9	110.9	September "
ጥቅምት 2002	176.0	204.2	142.5	161.6	132.8	144.5	141.0	166.2	115.1	126.7	109.9	128.8	110.4	110.4	October "
ገዳር 2002	180.0	205.1	150.3	160.9	134.0	150.6	148.8	180.3	129.3	133.5	113.6	136.2	109.5	109.5	November "

ሠንጠረዥ 5ሀ፡- ጠቅላላ የ ሸግጥ ጥጋ መመዘኛ ኢንዱክስ በሥሩ የተካተቱ ክፍሎች ለአገሪቱ ከላላጂ መገንጠት ታህሳስ 1999 = 100

Table 5a: General Consumer Price Index and Its Components for the Amhara Regional State
December 2006 = 100

ወርና ዓመት	ጠቅላላ ኢንዱክስ General Index	ጠቅላላ የምግብ ኢንዱክስ Food Total	ጠቅላላ የምግብ ከፊት ኢንዱክስ Non-Food Total	Non-food Consumer Price Index Components										Month and Year	
				መጠጥ Beverages	ቢሻራና ትምብሆ Cigarettes and Tobacco	ልብና መጓጊያ Clothing and Footwear	የቤት ኪራይ፣ ስራ ቤት መሥሪያ ስቃዎች+ውሃ፣ ነጻጅናፕይል House Rent, Construction Materials, Water, and Fuel and Power	የቤት ስቃዎች የቤት ግብዚጫዎች የቤት ቁሳቁስና የቤት ሠራተኛ ደመወዝ Furniture, Furnishings, Household Equipment and Operation	እኩምና Medical Care and Health	ትራንስፖርትና መገናኛ Transport and Communication	መዝናኛና ትምህርት Recreation, Entertainment and Education	የግል ንጽባናና የግል ጽጌ ስቃዎች Personal Care and Effects	ሌሎች ስቃዎች Miscellaneous Goods		
ታህሳስ 1999	100.0	100.0	100.0	100.0	100.0	100.0	100.0	100.0	100.0	100.0	100.0	100.0	100.0	100.0	December 2006
ሐምሌ 1999 - ሰኔ 2000	127.8	139.6	108.4	112.4	115.8	109.5	105.8	120.9	112.8	106.6	108.2	117.8	101.6	101.6	July 2007 - June 2008
ሐምሌ 2000 - ሰኔ 2001	172.1	198.7	128.4	198.7	154.5	132.4	118.5	156.1	124.2	113.2	127.4	148.3	103.4	103.4	July 2008 - June 2009
2001															2008/2009
ጥቅምት 2001	185.1	220.9	126.2	201.4	147.0	125.4	118.4	147.1	118.0	122.1	122.1	139.4	103.2	103.2	October "
ኅዳር 2001	179.9	212.2	126.9	202.5	147.0	129.6	117.7	150.3	118.5	119.0	123.2	142.1	103.2	103.2	November "
ታህሳስ 2001	166.5	190.7	126.8	202.4	148.0	131.4	116.7	152.5	118.5	113.4	123.5	143.4	103.2	103.2	December "
ጥር 2001	164.6	187.8	126.6	201.3	147.7	132.8	115.6	155.6	123.2	107.8	124.0	144.5	103.2	103.2	January 2009
የካቲት 2001	164.8	185.9	130.0	199.1	152.8	136.7	119.2	162.1	123.9	108.2	130.5	148.1	103.2	103.2	February "
መጋቢት 2001	163.5	184.0	129.9	190.9	161.8	138.7	118.0	164.9	129.5	108.4	132.0	152.2	103.9	103.9	March "
ሚያዝያ 2001	165.0	184.5	133.0	197.1	169.1	143.1	120.7	167.3	128.6	108.4	136.8	158.0	103.7	103.7	April "
ግንቦት 2001	163.4	180.8	134.8	198.1	175.6	145.6	122.8	167.1	134.1	109.5	141.2	157.2	103.9	103.9	May "
ሰኔ 2001	164.5	181.9	136.0	198.7	172.1	146.9	123.7	169.7	136.0	112.6	140.4	161.7	103.9	103.9	June "
2002															2009/2010
ሐምሌ 2001	169.6	187.4	140.3	201.6	171.4	151.4	128.3	172.7	137.4	115.7	142.4	172.7	104.0	104.0	July 2009
ኔሐሴ 2001	171.3	189.5	141.5	201.4	167.6	152.0	129.8	175.0	135.3	116.2	146.3	174.4	103.9	103.9	August "
መስከረም 2002	174.3	189.5	149.2	201.4	168.3	156.8	141.5	177.6	138.0	117.2	147.5	177.5	104.0	104.0	September "
ጥቅምት 2002	173.4	187.4	150.5	201.0	167.8	160.6	141.6	180.0	144.7	114.1	150.5	184.7	104.0	104.0	October "
ኅዳር 2002	172.1	184.2	152.3	199.5	171.1	163.6	143.0	180.9	149.4	120.1	149.7	192.8	104.0	104.0	November "

ሠንጠረዥ 6ሀ፡- ጠቅላላ የ ሽግግሮች ዋጋ መመዘኛ ኢንዱስትሪ ቢሥሩ የተካተቱ ክፍሎች ለቤኔንግራ ንዎዝ ክልላዊ መንግሥት
 ታህሳስ 1999 = 100

Table 6a: General Consumer Price Index and Its Components for the Benishangul Gumuz Regional State
 December 2006 = 100

ወርና ዓመት	ጠቅላላ ኢንዱስትሪ	ጠቅላላ የምግብ ኢንዱስትሪ	ጠቅላላ የምግብ ከፍተኛ ኢንዱስትሪ	Non-food Consumer Price Index Components											Month and Year
				መጠን	ቢሻራና ትምባሆ	ላብሳና መጫጫያ	የቤት ኪራይ፣ የቤት መሥሪያ ስቃዎች፣ውሃ፣ ነጻጅናሃይል	የቤት ስቃዎች የቤት ግንባታዎች የቤት ተሳታፊነት የቤት ሠራተኛ ደመወዝ	ሕክምና	ትራንስፖርትና መገናኛ	መዝናኛና ትምህርት	የግል ንጹህና የግል ጽግራ ስቃዎች	ሌሎች ስቃዎች		
	General Index	Food Total	Non-Food Total	Beverages	Cigarettes and Tobacco	Clothing and Footwear	House Rent, Construction Materials, Water, and Fuel and Power	Furniture, Furnishings, Household Equipment and Operation	Medical Care and Health	Transport and Communication	Recreation, Entertainment and Education	Personal Care and Effects	Miscellaneous Goods		
ታህሳስ 1999	100.0	100.0	100.0	100.0	100.0	100.0	100.0	100.0	100.0	100.0	100.0	100.0	100.0	100.0	December 2006
ሐምሌ 1999 - ሰኔ 2000	137.7	148.2	123.7	111.2	113.2	123.8	141.3	114.6	111.0	101.0	112.2	115.2	103.3	103.3	July 2007 - June 2008
ሐምሌ 2000 - ሰኔ 2001	193.9	226.1	151.4	150.0	148.3	156.2	159.4	158.1	143.4	100.7	158.5	146.5	112.4	112.4	July 2008 - June 2009
2001															2008/2009
ጥቅምት 2001	204.7	246.6	149.4	148.6	133.8	151.4	159.4	152.8	138.4	106.9	158.1	139.0	113.3	113.3	October "
ኅዳር 2001	200.6	237.8	151.5	149.5	140.1	160.8	157.6	157.2	140.6	106.9	158.4	143.4	114.4	114.4	November "
ታህሳስ 2001	186.9	215.0	149.8	148.2	140.0	159.3	152.2	161.1	140.0	106.7	158.8	141.6	116.3	116.3	December "
ጥር 2001	178.9	199.4	151.8	148.8	141.7	163.4	155.6	161.6	149.0	100.1	158.5	141.4	118.4	118.4	January 2009
የካቲት 2001	181.3	202.2	153.6	150.5	144.5	163.9	159.1	163.7	151.8	96.1	158.6	146.3	114.6	114.6	February "
መጋቢት 2001	184.3	206.8	154.7	150.7	163.1	162.1	161.8	163.2	150.0	96.1	161.7	153.5	113.6	113.6	March "
ሚያዝያ 2001	184.5	206.1	156.0	153.3	164.3	161.1	165.5	162.9	147.2	96.1	164.1	157.8	107.6	107.6	April "
ግንቦት 2001	184.4	205.1	157.0	154.1	164.8	161.8	167.6	162.7	149.5	96.1	165.5	157.3	107.6	107.6	May "
ሰኔ 2001	188.3	211.2	158.1	155.7	161.7	160.4	168.5	164.6	149.5	101.8	165.2	158.4	111.5	111.5	June "
2002															2009/2010
ሐምሌ 2001	198.5	225.5	162.8	156.5	164.0	164.2	170.7	180.9	152.8	105.6	166.7	164.3	112.1	112.1	July 2009
ኔሐሴ 2001	199.6	227.3	162.9	157.7	166.0	163.1	169.4	186.7	151.0	104.8	166.1	166.4	112.1	112.1	August "
መስከረም 2002	199.5	226.1	164.2	154.4	165.5	166.3	172.5	184.5	150.4	105.0	166.6	170.6	114.0	114.0	September "
ጥቅምት 2002	191.5	208.8	168.6	154.3	163.6	174.7	179.5	187.6	147.1	108.5	170.8	165.7	112.1	112.1	October "
ኅዳር 2002	190.8	204.0	173.4	153.9	163.8	189.3	182.4	190.8	151.1	115.1	170.3	174.3	112.8	112.8	November "

ወንጠረዥ 7ሀ፡- ጠቅላላ የ ሽያጭ ስራ ስርዓት አገልግሎት ስራ የተሳተፉ ክፍሎች ለድረ-ላይ አስተዳደር ካውንስል
 ታህሳስ 1999 = 100

Table 7a: General Consumer Price Index and Its Components for the Dire Dawa Administrative Council
 December 2006 = 100

ወር ዓመት	ጠቅላላ አገልግሎት	ጠቅላላ ምግብ አገልግሎት	ጠቅላላ ምግብ ነፃ ምግብ ነፃ አገልግሎት	ምግብ ነፃ ስራ ስርዓት የአገልግሎት ክፍሎች Non-food Consumer Price Index Components											Month and Year
				መጠን	ሲጃራና ትምባህ	ላሳይና መጫሊያ	የቤት ኪራይ የቤት መሥሪያ ሰቃይት-ውሃ ካላጅናሃይል	የቤት ሰቃይት የቤት ግንባታ የቤት ተሳታፊ የቤት ሠራተኛ ደመወዝ	እኩምና	ትራንስፖርትና መገናኛ	መገናኛና ትምህርት	የግል ንጹህና የግል ጽዕኒ ሰቃይት	ሌሎች ሰቃይት		
	General Index	Food Total	Non-Food Total	Beverages	Cigarettes and Tobacco	Clothing and Footwear	House Rent, Construction Materials, Water, and Fuel and Power	Furniture, Furnishings, Household Equipment and Operation	Medical Care and Health	Transport and Communication	Recreation, Entertainment and Education	Personal Care and Effects	Miscellaneous Goods		
ታህሳስ 1999	100.0	100.0	100.0	100.0	100.0	100.0	100.0	100.0	100.0	100.0	100.0	100.0	100.0	December 2006	
ሐምሌ 1999 - ሰኔ 2000	125.6	135.4	115.6	113.2	101.2	109.2	120.9	124.5	115.8	105.5	116.8	108.2	102.9	July 2007 - June 2008	
ሐምሌ 2000 - ሰኔ 2001	167.6	199.5	134.7	158.5	113.0	128.2	140.9	157.9	138.8	102.3	136.1	119.5	107.6	July 2008 - June 2009	
2001														2008/2009	
ጥቅምት 2001	169.8	205.4	133.1	157.0	112.6	124.9	142.8	150.6	138.0	107.4	126.3	116.7	106.3	October "	
ገዳሪ 2001	167.4	200.7	133.2	157.0	108.6	126.4	139.7	154.6	138.0	100.7	137.5	118.5	106.3	November "	
ታህሳስ 2001	166.5	197.8	134.2	157.0	112.6	129.3	139.1	156.2	138.2	99.2	141.7	119.4	106.3	December "	
ጥር 2001	164.9	195.8	133.1	155.2	114.5	129.8	136.5	154.4	142.3	98.3	141.1	118.3	106.3	January 2009	
የካቲት 2001	167.8	198.5	136.2	155.4	112.5	135.1	139.2	161.7	140.2	100.4	139.0	119.4	106.3	February "	
መጋቢት 2001	168.4	199.5	136.5	162.7	112.6	130.6	139.2	166.7	141.2	100.6	140.0	123.0	106.3	March "	
ሚያዝያ 2001	169.5	198.5	139.6	165.9	120.5	134.0	143.7	172.7	139.2	100.6	139.7	122.6	106.3	April "	
ግንቦት 2001	169.7	198.4	140.1	162.9	122.4	137.6	142.2	172.3	141.5	101.6	140.5	121.9	111.5	May "	
ሰኔ 2001	170.5	198.0	142.2	163.9	112.6	138.6	146.5	173.2	140.9	102.3	141.7	127.6	116.7	June "	
2002														2009/2010	
ሐምሌ 2001	171.3	198.4	143.4	165.2	122.4	140.0	148.6	174.3	140.3	102.3	141.0	127.6	116.7	July 2009	
ኔሐሴ 2001	173.9	202.4	144.6	166.2	128.4	140.4	152.7	169.7	146.7	103.6	140.6	130.3	116.7	August "	
መስከረም 2002	175.3	204.7	145.1	166.7	132.2	138.9	151.4	174.5	146.9	104.7	145.1	130.2	116.7	September "	
ጥቅምት 2002	175.2	200.9	148.7	164.4	130.4	142.7	152.0	186.8	143.6	105.0	154.6	131.1	116.7	October "	
ገዳሪ 2002	173.7	196.3	150.5	167.9	139.3	147.4	153.7	182.6	153.3	106.2	157.0	131.4	118.8	November "	

ወንጠረዥ 8ሀ፡- ጠቅላላ የ ሽግግር ዋጋ መመዘኛ ኢንዱስትሪ ቢሥሩ የተሳተፉ ክፍሎች ለጋምቤላ ሕዝቦች ክልላዊ መንግሥት
 ታህሳስ 1999 = 100

Table 8a: General Consumer Price Index and Its Components for the Gambela Peoples Regional State
 December 2006 = 100

ወርና ዓመት	ጠቅላላ ኢንዱስትሪ	ጠቅላላ የምግብ ኢንዱስትሪ	ጠቅላላ የምግብ ከፊት ኢንዱስትሪ	የምግብ ከፊት የኢንዱስትሪ ክፍሎች											Month and Year
				መጠን	ቤሽራና ትምባሆ	ላብስና መጫጫያ	የቤት ኪራይ፣ የቤት መሥሪያ ስቃዎች፣ውሃ፣ ነጻጅናሃይል	የቤት ስቃዎች የቤት ግንባታዎች የቤት ተሳታፊነት የቤት ሠራተኛ ደመወዝ	ሕክምና	ትራንስፖርትና መገናኛ	መዝናኛና ትምህርት	የግል ንጽባናና የግል ጽዕሪ ስቃዎች	ሌሎች ስቃዎች		
	General Index	Food Total	Non-Food Total	Beverages	Cigarettes and Tobacco	Clothing and Footwear	House Rent, Construction Materials, Water, and Fuel and Power	Furniture, Furnishings, Household Equipment and Operation	Medical Care and Health	Transport and Communication	Recreation, Entertainment and Education	Personal Care and Effects	Miscellaneous Goods		
ታህሳስ 1999	100.0	100.0	100.0	100.0	100.0	100.0	100.0	100.0	100.0	100.0	100.0	100.0	0.0	December 2006	
ሐምሌ 1999 - ሰኔ 2000	123.7	133.8	111.2	120.8	107.8	108.3	107.6	123.5	116.4	105.9	108.4	103.5	0.0	July 2007 - June 2008	
ሐምሌ 2000 - ሰኔ 2001	193.2	226.8	151.5	193.5	134.2	140.8	145.5	173.5	130.6	112.4	138.6	114.1	0.0	July 2008 - June 2009	
2001														2008/2009	
ጥቅምት 2001	219.7	271.2	155.6	200.4	132.3	142.0	152.9	176.2	130.2	114.1	130.7	116.0	0.0	October "	
ኅዳር 2001	194.6	224.5	157.5	205.4	132.3	146.4	152.9	176.6	130.2	114.1	142.3	114.7	0.0	November "	
ታህሳስ 2001	180.9	200.8	156.1	199.0	131.2	148.5	153.0	171.2	128.9	110.1	144.2	112.1	0.0	December "	
ጥር 2001	176.3	198.9	148.1	199.0	129.9	137.2	138.2	169.9	128.3	110.1	144.1	111.8	0.0	January 2009	
የካቲት 2001	178.5	198.5	153.6	199.0	133.9	141.6	148.1	174.1	131.0	110.1	143.0	114.3	0.0	February "	
መጋቢት 2001	177.2	197.6	151.9	199.0	136.6	142.2	142.2	175.3	129.5	111.8	145.4	113.7	0.0	March "	
ሚያዝያ 2001	180.5	201.9	153.8	202.6	137.2	139.3	146.4	175.0	133.5	111.8	152.2	114.2	0.0	April "	
ግንቦት 2001	186.2	212.9	153.1	203.6	144.9	143.4	141.5	169.5	137.4	111.8	153.1	115.0	0.0	May "	
ሰኔ 2001	191.6	220.3	155.9	190.4	152.3	141.5	152.7	169.4	143.2	112.2	155.4	114.8	0.0	June "	
2002														2009/2010	
ሐምሌ 2001	197.8	230.0	157.8	190.5	152.3	141.9	157.7	167.5	143.8	112.2	154.7	116.0	0.0	July 2009	
ኔሐሴ 2001	200.7	232.7	160.8	198.4	152.3	141.2	162.1	166.0	151.3	114.4	163.4	116.6	0.0	August "	
መስከረም 2002	193.9	221.4	159.6	203.7	152.3	144.2	154.1	170.3	147.7	114.4	167.9	119.7	0.0	September "	
ጥቅምት 2002	185.6	208.4	157.3	204.1	152.3	144.1	144.8	184.7	156.7	114.4	162.5	119.9	0.0	October "	
ኅዳር 2002	183.8	203.0	160.0	206.4	152.3	147.4	149.0	179.4	148.1	140.0	158.9	120.0	0.0	November "	

ሠንጠረዥ 9ሀ፡- ጠቅላላ የ ሽግግር ዋጋ መመዘኛ ኢንዱክስ በሥሩ የተካተቱ ክፍሎች ለሐረር ክልል መገንጠት
 ታህሳስ 1999 = 100

Table 9a: General Consumer Price Index and Its Components for the Harari People Regional State
 December 2006 = 100

ወርና ዓመት	ጠቅላላ ኢንዱክስ	ጠቅላላ የምግብ ኢንዱክስ	ጠቅላላ የምግብ ከፍተኛ ኢንዱክስ	Non-food Consumer Price Index Components											Month and Year
				መጠጥ	ቤዳራና ትምባሆ	ላብና መጫጫ	የቤት ኪራይ የቤት መሥሪያ ስቃዎች+ውሃ ነጻጅናሃይል	የቤት ማኪኒዳዎች የቤት ቁሳቁስና የቤት ሠራተኛ ደመወዝ	ሕክምና	ትራንስፖርትና መገናኛ	መዝናኛና ትምህርት	የግል ንጹህናና የግል ጽጌ ስቃዎች	ሌሎች ስቃዎች		
	General Index	Food Total	Non-Food Total	Beverages	Cigarettes and Tobacco	Clothing and Footwear	House Rent, Construction Materials, Water, and Fuel and Power	Furniture, Furnishings, Household Equipment and Operation	Medical Care and Health	Transport and Communication	Recreation, Entertainment and Education	Personal Care and Effects	Miscellaneous Goods		
ታህሳስ 1999	100.0	100.0	100.0	100.0	100.0	100.0	100.0	100.0	100.0	100.0	100.0	100.0	100.0	100.0	December 2006
ሐምሌ 1999 - ሰኔ 2000	119.1	130.4	108.5	107.9	106.4	111.0	108.8	109.1	99.7	108.8	102.4	117.1	100.7	100.7	July 2007 - June 2008
ሐምሌ 2000 - ሰኔ 2001	169.5	205.1	136.3	159.6	164.8	149.9	131.1	135.0	104.8	124.8	117.7	137.6	118.3	118.3	July 2008 - June 2009
2001															2008/2009
ጥቅምት 2001	173.6	213.9	136.0	156.8	123.6	145.2	139.2	132.0	106.8	131.8	114.5	134.9	118.3	118.3	October "
ገዳር 2001	169.4	207.3	134.0	160.7	123.6	145.4	132.6	130.1	107.6	130.8	115.1	139.2	118.8	118.8	November "
ታህሳስ 2001	166.1	198.7	135.7	160.8	151.9	144.2	134.1	132.0	107.3	129.4	117.0	140.1	120.1	120.1	December "
ጥር 2001	165.4	195.9	136.8	160.8	180.7	152.7	128.6	137.9	107.6	118.7	118.7	139.0	117.3	117.3	January 2009
የካቲት 2001	169.5	202.8	138.4	160.5	188.9	155.6	131.0	136.6	106.7	118.7	118.2	140.0	118.5	118.5	February "
መጋቢት 2001	169.5	201.9	139.2	163.5	201.7	156.8	129.3	137.9	108.0	118.7	120.4	142.3	118.5	118.5	March "
ሚያዝያ 2001	170.1	202.3	140.1	163.5	201.7	157.8	129.2	142.0	107.8	118.7	123.4	141.5	118.5	118.5	April "
ግንቦት 2001	170.6	202.6	140.8	164.0	211.9	160.8	125.8	143.9	107.8	119.4	128.0	141.4	118.5	118.5	May "
ሰኔ 2001	174.7	206.5	144.9	163.7	216.0	166.4	132.8	148.9	101.7	120.1	126.3	142.8	119.3	119.3	June "
2002															2009/2010
ሐምሌ 2001	177.4	209.7	147.2	164.0	211.9	166.8	136.0	149.7	170.1	120.8	129.2	144.9	119.8	119.8	July 2009
ኔሐሴ 2001	176.0	203.6	150.2	167.9	213.7	170.2	135.7	153.0	205.6	131.5	132.6	147.5	119.8	119.8	August "
መስከረም 2002	175.5	202.0	150.7	168.1	211.9	170.4	135.2	152.4	230.1	132.1	137.3	149.6	119.3	119.3	September "
ጥቅምት 2002	179.7	208.9	152.5	166.4	211.9	171.2	136.1	159.5	250.3	132.4	140.0	148.2	119.7	119.7	October "
ገዳር 2002	175.6	200.1	152.8	167.5	225.9	171.8	134.0	160.8	250.2	132.9	140.3	148.9	120.2	120.2	November "

ወንጠረዥ 10ሀ:- ጠቅላላ የ ሽግግት የጋ መመዘኛ ኢንዱስትሪ ቢሥሩ የተካተቱ ክፍሎች ለአርጊያ ክልላዊ መገንጠያ ታህሳስ 1999 = 100

Table 10a: General Consumer Price Index and Its Components for the Oromiya Regional State
December 2006 = 100

ወር ዓመት	ጠቅላላ ኢንዱስትሪ	ጠቅላላ ምግብ ኢንዱስትሪ	ጠቅላላ ምግብ ነክ ያልሆኑ ኢንዱስትሪ	ምግብ ነክ ያልሆኑ የኢንዱስትሪ ክፍሎች Non-food Consumer Price Index Components											Month and Year
				መጠን	ቢጃራና ትምባሆ	ላብስና መጫሊያ	የቤት ኪራይ የቤት መሥሪያ ዕቃዎች+ውሃ ነጻጅናሃይል	የቤት ስቃዎች የቤት ግንባታዎች የቤት ተሳታፊነት የቤት ሠራተኛ ደመወዝ	ሕክምና	ትራንስፖርትና መገናኛ	መዝናኛና ትምህርት	የግል ንጽባና የግል ጽግ ዕቃዎች	ሌሎች ዕቃዎች		
	General Index	Food Total	Non-Food Total	Beverages	Cigarettes and Tobacco	Clothing and Footwear	House Rent, Construction Materials, Water, and Fuel and Power	Furniture, Furnishings, Household Equipment and Operation	Medical Care and Health	Transport and Communication	Recreation, Entertainment and Education	Personal Care and Effects	Miscellaneous Goods		
ታህሳስ 1999	100.0	100.0	100.0	100.0	100.0	100.0	100.0	100.0	100.0	100.0	100.0	100.0	100.0	December 2006	
ሐምሌ 1999 - ሰኔ 2000	129.0	138.7	115.0	116.5	108.2	118.7	113.6	123.7	108.9	103.3	107.2	113.4	103.2	July 2007 - June 2008	
ሐምሌ 2000 - ሰኔ 2001	179.5	202.0	146.9	182.8	143.8	152.0	142.4	155.0	134.0	106.4	126.3	149.2	118.7	July 2008 - June 2009	
2001														2008/2009	
ጥቅምት 2001	187.9	217.9	144.5	180.7	134.6	142.5	141.8	151.9	130.8	120.9	125.9	142.0	118.8	October "	
ገዳር 2001	179.8	204.1	144.6	181.3	135.0	148.3	139.1	153.4	132.8	113.6	126.1	144.9	117.1	November "	
ታህሳስ 2001	168.2	183.9	145.5	179.8	137.0	149.9	142.7	152.4	130.5	107.3	125.4	145.7	113.4	December "	
ጥር 2001	171.7	188.9	146.7	189.2	141.5	151.8	142.4	153.0	131.6	102.0	124.6	147.7	114.4	January 2009	
የካቲት 2001	173.6	190.0	149.9	189.2	152.3	159.3	144.3	158.8	132.6	98.4	125.0	151.2	116.4	February "	
መጋቢት 2001	173.8	189.3	151.2	188.4	156.7	162.6	143.9	160.6	138.4	98.6	129.1	156.9	119.6	March "	
ሚያዝያ 2001	175.5	191.1	153.0	188.8	157.1	163.9	146.9	161.0	139.1	100.7	130.8	160.2	121.2	April "	
ግንቦት 2001	174.9	189.4	153.9	186.6	158.1	165.1	147.9	162.4	143.3	103.0	129.1	159.6	125.7	May "	
ሰኔ 2001	178.8	194.5	156.1	190.2	160.1	169.5	148.1	163.9	149.6	108.3	132.0	167.4	125.1	June "	
2002														2009/2010	
ሐምሌ 2001	178.8	192.7	158.6	189.5	161.4	171.7	150.4	169.1	147.1	111.2	137.3	170.9	127.9	July 2009	
ኔሐሴ 2001	180.3	192.2	163.1	192.5	159.2	178.5	156.0	172.0	147.7	112.4	138.6	172.9	133.5	August "	
መስከረም 2002	180.6	192.4	163.4	191.9	158.3	179.7	154.6	174.3	148.2	117.0	141.7	174.3	131.9	September "	
ጥቅምት 2002	176.0	184.1	164.3	193.3	163.1	180.7	156.5	172.9	150.5	120.2	140.1	171.5	129.2	October "	
ገዳር 2002	178.3	185.0	168.6	190.8	165.4	189.0	161.0	178.1	148.2	124.8	139.2	179.9	128.3	November "	

ሠንጠረዥ 11ሀ- ጠቅላላ የ ሽግግር ዋጋ መመዘኛ ኢንዱስትሪ ቢሮ የተካተቱ ክፍሎች ለደብዳቤ ክልላዊ መገንጠያ ታህሳስ 1999 = 100

Table 11a: General Consumer Price Index and Its Components for the SNNP Regional State December 2006= 100

ወርና ዓመት	ጠቅላላ ኢንዱስትሪ	ጠቅላላ የምግብ ኢንዱስትሪ	ጠቅላላ የምግብ ከፍልሆኑ ኢንዱስትሪ	የምግብ ከፍልሆኑ የኢንዱስትሪ ክፍሎች											Month and Year
				መጠን	ቢሽራና ትምባሆ	ላብስና መጫጫያ	የቤት ኪራይ፣ የቤት መሥሪያ ስቃዎች+ውሃ፣ ነጻጅናሃይል	የቤት ስቃዎች የቤት ግንባታዎች የቤት ተሳታፊነት የቤት ሠራተኛ ደመወዝ	ሕክምና	ትራንስፖርትና መገናኛ	መዝናኛና ትምህርት	የግል ንጽባናና የግል ጽግ ስቃዎች	ሌሎች ስቃዎች		
	General Index	Food Total	Non-Food Total	Beverages	Cigarettes and Tobacco	Clothing and Footwear	House Rent, Construction Materials, Water, and Fuel and Power	Furniture, Furnishings, Household Equipment and Operation	Medical Care and Health	Transport and Communication	Recreation, Entertainment and Education	Personal Care and Effects	Miscellaneous Goods		
ታህሳስ 1999	100.0	100.0	100.0	100.0	100.0	100.0	100.0	100.0	100.0	100.0	100.0	100.0	100.0	December 2006	
ሐምሌ 1999 - ሰኔ 2000	125.6	131.1	118.0	118.6	104.0	117.2	117.2	134.3	109.2	124.5	106.8	106.9	106.1	July 2007 - June 2008	
ሐምሌ 2000 - ሰኔ 2001	173.9	189.3	152.7	178.0	133.9	155.9	150.4	175.6	119.3	136.1	122.7	128.3	114.2	July 2008 - June 2009	
2001														2008/2009	
ጥቅምት 2001	181.1	201.6	152.8	182.7	128.2	147.0	155.1	170.8	115.9	147.7	114.9	124.8	110.3	October "	
ገዳር 2001	172.3	186.0	153.4	178.0	130.8	151.6	154.8	171.3	116.4	143.8	120.3	129.0	112.6	November "	
ታህሳስ 2001	164.9	173.5	153.1	177.3	131.5	156.6	152.0	174.5	116.6	136.3	121.4	126.6	112.6	December "	
ጥር 2001	164.9	173.1	153.5	175.4	130.1	159.1	152.4	172.9	115.8	131.3	127.4	127.0	112.6	January 2009	
የካቲት 2001	166.2	174.9	154.2	178.4	136.8	164.1	148.7	179.3	122.1	128.7	129.4	129.8	117.2	February "	
መጋቢት 2001	166.5	175.4	154.2	178.8	136.1	163.8	148.4	179.4	123.6	129.4	129.3	130.7	118.3	March "	
ሚያዝያ 2001	170.3	180.2	156.5	179.8	140.7	166.9	149.9	188.4	124.0	129.0	130.8	132.7	117.2	April "	
ግንቦት 2001	171.1	180.2	158.6	179.3	146.1	169.4	152.4	189.4	128.7	132.6	132.5	135.4	118.3	May "	
ሰኔ 2001	172.6	182.1	159.5	182.2	144.4	172.2	152.4	188.5	127.8	136.1	132.5	134.4	120.6	June "	
2002														2009/2010	
ሐምሌ 2001	174.7	182.6	163.8	186.9	144.9	176.3	157.2	193.0	131.5	140.6	136.1	135.9	120.6	July 2009	
ኔሐሴ 2001	177.1	184.5	166.9	187.1	146.3	178.6	161.9	197.5	127.5	141.5	137.1	140.3	121.8	August "	
መስከረም 2002	178.4	181.4	174.2	189.4	144.9	184.5	171.5	203.6	128.9	146.8	144.4	160.9	124.1	September "	
ጥቅምት 2002	180.3	182.8	177.0	193.5	146.1	186.3	175.2	202.7	129.8	149.0	144.1	166.4	131.0	October "	
ገዳር 2002	180.5	180.9	179.9	193.3	144.9	190.0	178.0	207.1	132.5	156.9	142.7	184.5	124.1	November "	

ወንጠራዥ 12ሀ:-ጠቅላላ የ ሽግግር ዋጋ መመዘኛ ኢንዱስትሪ ቢሥሩ የተካተቱ ክፍሎች ለሰግቢ ክልል መግንባት
 ታህሳስ 1999 = 100

Table 12a: General Consumer Price Index and Its Components for the Somali Regional State
 December 2006 = 100

ወርና ዓመት	ጠቅላላ ኢንዱስትሪ	ጠቅላላ የምግብ ኢንዱስትሪ	ጠቅላላ የምግብ ከፍተኛ ኢንዱስትሪ	Non-food Consumer Price Index Components											Month and Year
				መጠን	ቢጃራና ትምባሆ	ልብና መጫጫያ	የቤት ኪራይ፣ የቤት መሥሪያ ስቃዎች+ውሃ፣ ነጻጅናሃይል	የቤት ስቃዎች የቤት ግንቢያዎች የቤት ተሳታፊዎች የቤት ሠራተኛ ደመወዝ	እኩምና	ትራንስፖርትና መገናኛ	መዝናኛና ትምህርት	የግል ንጹህናና የግል ጽግራ ስቃዎች	ሌሎች ስቃዎች		
	General Index	Food Total	Non-Food Total	Beverages	Cigarettes and Tobacco	Clothing and Footwear	House Rent, Construction Materials, Water, and Fuel and Power	Furniture, Furnishings, Household Equipment and Operation	Medical Care and Health	Transport and Communication	Recreation, Entertainment and Education	Personal Care and Effects	Miscellaneous Goods		
ታህሳስ 1999	100.0	100.0	100.0	100.0	100.0	100.0	100.0	100.0	100.0	100.0	100.0	100.0	100.0	100.0	December 2006
ሐምሌ 1999 - ሰኔ 2000	118.5	124.6	108.5	105.8	109.2	111.4	107.9	107.2	133.1	103.5	100.8	99.7	100.8	100.8	July 2007 - June 2008
ሐምሌ 2000 - ሰኔ 2001	170.8	195.9	129.8	134.2	123.1	129.1	128.4	149.6	144.5	115.8	107.8	118.5	131.3	131.3	July 2008 - June 2009
2001															2008/2009
ጥቅምት 2001	175.1	202.5	130.4	133.2	126.5	125.6	132.7	140.6	163.1	117.9	105.6	113.8	134.1	134.1	October "
ገዳር 2001	170.1	193.3	132.3	133.3	123.1	127.1	136.7	141.2	163.7	117.9	108.6	116.1	134.1	134.1	November "
ታህሳስ 2001	154.8	170.6	129.1	133.2	123.1	127.3	128.3	145.0	152.4	113.7	109.3	119.3	134.1	134.1	December "
ጥር 2001	164.3	185.4	130.0	133.2	123.1	126.8	131.0	146.6	141.9	116.0	108.1	119.1	134.1	134.1	January 2009
የካቲት 2001	169.9	194.0	130.7	133.2	123.1	132.1	127.6	156.2	125.1	117.1	105.6	124.2	135.8	135.8	February "
መጋቢት 2001	169.3	191.1	133.8	142.1	123.1	135.5	131.1	162.4	123.6	117.1	107.5	123.1	135.8	135.8	March "
ሚያዝያ 2001	171.9	194.6	135.0	146.4	123.1	133.9	133.4	164.2	129.2	117.1	107.7	127.9	135.8	135.8	April "
ግንቦት 2001	173.5	196.3	136.2	142.9	123.1	136.5	134.0	167.2	131.4	117.1	114.9	125.2	135.8	135.8	May "
ሰኔ 2001	179.5	203.8	139.8	142.4	138.5	138.6	136.1	168.9	151.9	117.3	121.4	125.7	135.8	135.8	June "
2002															2009/2010
ሐምሌ 2001	178.8	202.3	140.6	142.8	156.1	139.5	133.3	169.7	160.8	117.6	118.8	125.6	135.8	135.8	July 2009
ኔሐሴ 2001	176.5	197.4	142.3	142.8	156.1	140.0	137.9	165.5	156.3	119.4	128.4	126.1	135.8	135.8	August "
መስከረም 2002	181.1	203.4	144.6	142.8	156.1	143.0	140.4	168.8	153.1	120.9	133.6	129.4	135.8	135.8	September "
ጥቅምት 2002	185.2	209.1	146.4	142.8	156.1	150.8	139.0	171.9	161.9	118.7	132.8	131.3	135.8	135.8	October "
ገዳር 2002	181.7	199.7	152.4	142.8	156.1	154.8	149.1	175.2	176.1	123.7	131.6	131.8	141.3	141.3	November "

ወንጠረኹ 130:- ጠቅላላ የ ሽግግር ዋጋ መመዘኛ ኢንዱስትሪ ቢሥሩ የተካተቱ ክፍሎች ለትግራይ ክልል መገንጠት
 ታህሳስ 1999 = 100

Table 13a: General Consumer Price Index and Its Components for the Tigray Regional State
 December 2006 = 100

ወር ዓመት	ጠቅላላ ኢንዱስትሪ	ጠቅላላ ምግብ ኢንዱስትሪ	ጠቅላላ ምግብ ነክ ያልሆኑ ኢንዱስትሪ	ምግብ ነክ ያልሆኑ የኢንዱስትሪ ክፍሎች											Month and Year
				መጠን	ቢሽራና ትምባሆ	ላብስና መጓጓዣ	የቤት ኪራይ የቤት መሥሪያ ዕቃዎች+ውሃ ነጻጅናሃይል	የቤት ስቃዎች የቤት ግንባታዎች የቤት ተሳታፊነት የቤት ሠራተኛ ደመወዝ	እኩምና	ትራንስፖርትና መገናኛ	መዝናኛና ትምህርት	የግል ንጽባና የግል ጽግ ዕቃዎች	ሌሎች ዕቃዎች		
	General Index	Food Total	Non-Food Total	Beverages	Cigarettes and Tobacco	Clothing and Footwear	House Rent, Construction Materials, Water, and Fuel and Power	Furniture, Furnishings, Household Equipment and Operation	Medical Care and Health	Transport and Communication	Recreation, Entertainment and Education	Personal Care and Effects	Miscellaneous Goods		
ታህሳስ 1999	100.0	100.0	100.0	100.0	100.0	100.0	100.0	100.0	100.0	100.0	100.0	100.0	100.0	December 2006	
ሐምሌ 1999 - ሰኔ 2000	130.1	143.4	111.7	112.2	101.6	119.7	107.8	120.2	104.7	99.1	105.0	105.8	116.0	July 2007 - June 2008	
ሐምሌ 2000 - ሰኔ 2001	183.0	214.8	139.4	188.8	117.4	161.4	131.1	151.8	106.4	101.4	113.3	126.5	134.5	July 2008 - June 2009	
2001														2008/2009	
ጥቅምት 2001	198.5	241.1	140.0	183.9	112.1	155.5	135.8	151.9	110.4	116.3	111.7	109.4	139.0	October "	
ኅዳር 2001	187.8	223.4	138.9	179.2	109.6	160.9	130.7	150.8	100.5	112.1	114.4	115.6	140.3	November "	
ታህሳስ 2001	177.8	206.8	138.0	182.8	114.2	159.9	132.1	149.0	101.2	100.9	113.8	107.6	139.3	December "	
ጥር 2001	174.3	200.8	137.8	182.7	113.8	160.4	132.4	151.1	104.9	95.1	112.0	109.3	132.3	January 2009	
የካቲት 2001	174.8	200.2	140.0	184.9	113.0	168.5	129.6	151.0	108.3	94.7	110.2	136.4	126.2	February "	
መጋቢት 2001	176.9	203.3	140.6	189.1	111.9	169.1	129.2	151.6	107.6	95.2	111.3	138.2	132.3	March "	
ሚያዝያ 2001	178.0	203.7	142.8	184.5	121.8	170.6	132.5	154.2	110.5	94.2	114.4	145.4	128.5	April "	
ግንቦት 2001	173.1	191.6	147.7	205.7	131.4	175.7	134.8	163.2	110.1	95.5	117.4	154.3	135.9	May "	
ሰኔ 2001	175.8	194.3	150.3	205.7	146.5	179.0	135.7	164.9	110.2	96.3	122.2	167.2	141.0	June "	
2002														2009/2010	
ሐምሌ 2001	180.2	198.2	155.5	196.5	161.8	188.0	140.8	167.1	111.2	108.7	124.3	171.7	141.0	July 2009	
ኔሐሴ 2001	182.6	200.2	158.4	203.1	174.5	191.9	141.9	170.5	110.1	110.6	130.1	182.6	142.9	August "	
መስከረም 2002	181.3	197.6	158.7	199.3	186.3	191.4	141.8	173.7	115.6	116.7	126.7	179.3	142.9	September "	
ጥቅምት 2002	185.8	202.7	162.4	187.3	185.4	200.0	145.9	175.5	115.1	118.6	124.4	184.3	140.6	October "	
ኅዳር 2002	184.5	199.7	163.6	190.4	179.9	201.8	143.8	182.0	116.2	124.6	122.3	180.7	153.0	November "	

ሠንጠረዥ 1ለ፡- ጠቅላላ የምግብና የምግብ ክፍሎች የ ሽግግር ዋጋ መመዘኛ ሊጋደገስ በአገር አቀፍ ደረጃ ታህሳስ 1999 = 100

Table 1b: Consumer Price Index of Total Food and Its Components at Country Level
December 2006 = 100

ወርና ዓመት	ጠቅላላ የምግብ	እህል	በቤት ውስጥ የተወሰዱ የምግብ ዓይነቶች										የምግብ ለገልግሎት	ከቤት ውጪ የተወሰዱ የምግቦች	Month and Year	
			ጥራጥራ	ዳቦና ሌሎች የተዘጋጁ የምግቦች	ሥጋ	ወተት+ ዓይብና እንቁላል	ዘይትና ቅባቶች	አትክልትና ፍሬፍሬ	ቅመግ ቅመጦች	ጽጌትና ሌሎች ሥራሥሮች	ያልተቆላ ቤናና ሻይ ቅጠል	ሌሎች የምግቦች				የምግብ ለገልግሎት
	Food Total	Cereals	Pulses	Bread and other Prepared Food	Meat	Milk,Cheese and Egg	Oils and Fats	Vegetables and Fruits	Spices	Potatoes, Other Tubers and Stems	Coffee (beans, whole) and Tea Leaves	Other Food Items	Milling Charges	Food taken away from home		
ታህሳስ 1999	100.0	100.0	100.0	100.0	100.0	100.0	100.0	100.0	100.0	100.0	100.0	100.0	100.0	100.0	100.0	December 2006
ሐምሌ 1999 - ሰኔ 2000	137.2	137.2	124.1	137.6	120.0	117.7	152.6	142.0	325.9	125.7	124.5	104.7	113.9	118.7	118.7	July 2007 - June 2008
ሐምሌ 2000 - ሰኔ 2001	198.0	239.8	169.9	225.5	149.6	159.5	170.3	168.0	272.1	188.3	143.3	164.7	129.6	151.1	151.1	July 2008 - June 2009
2001																2008/2009
ጥቅምት 2001	214.3	277.6	176.8	231.2	150.4	157.5	178.1	150.5	351.9	177.0	141.9	147.3	128.6	148.0	148.0	October "
ኅዳር 2001	202.2	252.1	173.9	234.2	148.1	156.0	172.2	145.8	314.4	175.6	141.3	154.3	127.9	148.3	148.3	November "
ታህሳስ 2001	184.3	214.3	162.9	225.0	146.6	150.6	166.2	147.0	275.7	175.7	138.6	158.4	126.3	149.9	149.9	December "
ጥር 2001	185.3	215.2	162.7	224.1	147.3	157.5	164.4	158.5	232.1	186.7	140.4	171.7	125.6	152.8	152.8	January 2009
የካቲት 2001	186.1	212.8	167.5	228.3	147.8	164.0	162.8	172.3	202.2	198.0	144.6	178.7	129.0	153.5	153.5	February "
መጋቢት 2001	185.9	210.3	164.8	226.1	148.8	161.5	163.5	188.8	183.0	203.5	147.6	179.7	130.3	156.5	156.5	March "
ጊዳር 2001	187.8	211.8	168.5	220.9	157.5	167.2	167.6	194.3	173.1	206.7	149.2	181.8	133.2	157.0	157.0	April "
ግንቦት 2001	185.6	207.4	171.2	227.7	153.4	172.7	166.4	203.1	159.6	196.3	147.1	185.5	135.7	157.6	157.6	May "
ሰኔ 2001	188.6	212.4	169.2	228.6	154.5	177.9	163.5	205.8	153.5	206.1	149.6	184.5	139.0	160.0	160.0	June "
2002																2009/2010
ሐምሌ 2001	189.8	219.1	169.2	231.7	154.9	174.5	161.1	173.7	176.0	184.5	155.3	187.5	142.0	162.3	162.3	July 2009
ኦገስት 2001	190.4	220.6	167.5	231.5	157.0	174.9	163.7	175.8	167.2	177.0	160.4	185.6	147.0	164.8	164.8	August "
መስከረም 2002	190.5	212.2	168.4	232.5	164.4	183.2	168.5	192.6	164.2	186.9	169.0	189.1	149.4	168.9	168.9	September "
ጥቅምት 2002	186.9	201.6	166.7	235.1	162.9	181.0	166.3	184.5	178.5	189.2	176.3	182.7	148.0	170.4	170.4	October "
ኅዳር 2002	185.9	198.2	162.7	236.4	158.8	180.3	163.4	168.9	192.3	194.4	178.7	194.3	151.8	172.7	172.7	November "

ግንባሪዎች 2ሳ፡- የምግብ ዋጋ መመዘኛ አገልግሎት ማስፈሰፍ በአገር አቀፍ እና በክልሎች ደረጃ
 ታህሳስ 1999 = 100

Table 2b: Summary of Consumer Price Indices of Food at Country and Regional Levels
 December 2006=100

ወርና ዓመት	Reporting Level												Month and Year
	Eth.	A.A.	Afar	Amhara	B.Gumuz	D.Dawa	Gambela	Harari	Oromia	SNNP	Somalia	Tigray	
ታህሳስ 1999	100.0	100.0	100.0	100.0	100.0	100.0	100.0	100.0	100.0	100.0	100.0	100.0	December 2006
ከታህሳስ 1999 - በኔ 2000	137.2	134.8	136.1	139.6	148.2	135.4	133.8	130.4	138.7	131.1	124.6	143.4	July 2007 - June 2008
ከታህሳስ 2000 - በኔ 2001	198.0	190.7	189.5	198.7	226.1	199.5	226.8	205.1	202.0	189.3	195.9	214.8	July 2008 - June 2009
2001													2008/2009
ጥቅምት 2001	214.3	196.8	200.0	220.9	246.6	205.4	271.2	213.9	217.9	201.6	202.5	241.1	October "
ኅዳር 2001	202.2	194.8	192.5	212.2	237.8	200.7	224.5	207.3	204.1	186.0	193.3	223.4	November "
ታህሳስ 2001	184.3	184.8	180.2	190.7	215.0	197.8	200.8	198.7	183.9	173.5	170.6	206.8	December "
ጥር 2001	185.3	181.9	180.1	187.8	199.4	195.8	198.9	195.9	188.9	173.1	185.4	200.8	January 2009
የክቲት 2000	186.1	183.4	182.1	185.9	202.2	198.5	198.5	202.8	190.0	174.9	194.0	200.2	February "
መጋቢት 2001	185.9	186.0	181.5	184.0	206.8	199.5	197.6	201.9	189.3	175.4	191.1	203.3	March "
ጊያዝያ 2001	187.8	189.4	185.0	184.5	206.1	198.5	201.9	202.3	191.1	180.2	194.6	203.7	April "
ግንቦት 2001	185.6	191.0	185.3	180.8	205.1	198.4	212.9	202.6	189.4	180.2	196.3	191.6	May "
በኔ 2001	188.6	189.3	187.2	181.9	211.2	198.0	220.3	206.5	194.5	182.1	203.8	194.3	June "
2002													2009/2010
ከታህሳስ 2001	189.8	191.8	188.4	187.4	225.5	198.4	230.0	209.7	192.7	182.6	202.3	198.2	July 2009
ኔሐሴ 2001	190.4	193.5	195.1	189.5	227.3	202.4	232.7	203.6	192.2	184.5	197.4	200.2	August "
መስከረም 2002	190.5	203.2	201.6	189.5	226.1	204.7	221.4	202.0	192.4	181.4	203.4	197.6	September "
ጥቅምት 2002	186.9	201.7	204.2	187.4	208.8	200.9	208.4	208.9	184.1	182.8	209.1	202.7	October "
ኅዳር 2002	185.9	198.2	205.1	184.2	204.0	196.3	203.0	200.1	185.0	180.9	199.7	199.7	November "

ወንጠረኝ 3 ለ፡- ጠቅላላ የሽግግር ዋጋ መመዘኛ ሊያደክስና በሥሩ የተከተቱ ክፍሎች ለአዲስ አበባ ከተማ መስተዳድር
 ታህሳስ 1999 = 100

Table 3b: Consumer Price Index of Total Food and Its Components for Addis Ababa City Administration
 December 2006 = 100

ወርና ዓመት	ጠቅላላ ምግብ	እህል	በቤት ውስጥ የተወለዱ የምግብ ዓይነቶች											ከቤት ውጪ የተወለዱ ምግቦች	Month and Year
			ጥራጥራ	ዳቦና ሌሎች የተዘጋጁ ምግቦች	ሥጋ	ወተት፣ ዓይብና እንቁላል	ዘይትና ቅባቶች	አትክልትና ፍራፍራ	ቅመግ ቅመም	ድንችና ሌሎች ሥራሥርች	ያልተቆላ ቡናና ቫይ ቅጠል	ሌሎች ምግቦች	የማስረጫ አገልግሎት		
Food Total	Cereals	Pulses	Bread and other Prepared Food	Meat	Milk, Cheese and Egg	Oils and Fats	Vegetables and Fruits	Spices	Potatoes, Other Tubers and Stems	Coffee (beans, whole) and Tea Leaves	Other Food Items	Milling Charges	Food taken away from home		
ታህሳስ 1999	100.0	100.0	100.0	100.0	100.0	100.0	100.0	100.0	100.0	100.0	100.0	100.0	100.0	100.0	December 2006
ሐምሌ 1999 - ሰኔ 2000	134.8	122.2	134.5	134.6	118.9	129.4	145.3	134.2	320.3	206.6	128.5	119.7	120.6	156.1	July 2007 - June 2008
ሐምሌ 2000 - ሰኔ 2001	190.7	213.2	192.8	217.4	153.7	182.2	166.2	183.0	252.2	288.8	137.3	159.8	139.7	156.1	July 2008 - June 2009
2001															2008/2009
ጥቅምት 2001	196.8	231.8	205.1	218.3	157.6	183.1	170.9	160.7	313.4	251.6	140.5	134.5	141.1	154.0	October "
ኅዳር 2001	194.8	233.4	200.6	217.3	156.0	181.4	163.5	153.3	277.4	313.2	136.0	137.2	139.2	154.8	November "
ታህሳስ 2001	184.8	204.8	191.1	214.2	150.0	179.7	161.5	154.5	271.6	263.7	133.9	149.0	137.2	153.7	December "
ጥር 2001	181.9	202.0	188.8	214.3	148.9	182.6	159.5	156.8	209.5	264.9	134.1	168.4	137.0	154.3	January 2009
የካቲት 2001	183.4	203.8	179.9	216.8	150.2	180.7	155.7	167.3	195.5	312.4	136.5	172.4	139.0	157.0	February "
መጋቢት 2001	186.0	204.0	188.4	221.0	150.7	184.4	156.3	190.7	175.5	328.0	137.3	176.2	141.2	157.5	March "
ግብርን 2001	189.4	206.3	187.5	225.4	154.7	182.3	168.1	211.3	157.4	321.8	135.1	180.1	142.1	161.3	April "
ግንቦት 2001	191.0	207.5	186.0	217.3	157.5	191.8	169.4	229.5	149.1	318.0	138.0	187.7	140.1	169.0	May "
ሰኔ 2001	189.3	204.7	182.5	223.8	159.1	203.1	170.3	207.6	146.7	290.9	137.6	188.1	140.1	168.1	June "
2002															2009/2010
ሐምሌ 2001	191.8	210.6	184.8	233.0	163.0	211.6	165.7	183.9	163.4	255.3	137.2	189.5	149.0	172.8	July 2009
ኦገስት 2001	193.5	210.9	187.5	233.1	163.0	208.9	164.2	199.0	156.1	242.2	176.4	176.9	148.5	177.4	August "
መስከረም 2002	203.2	218.6	188.4	238.4	167.8	215.3	172.5	251.3	152.5	243.6	185.3	201.3	164.6	180.4	September "
ጥቅምት 2002	201.7	215.4	187.5	238.8	166.2	215.1	169.8	191.1	218.5	268.6	186.2	199.5	157.8	185.7	October "
ኅዳር 2002	198.2	214.5	188.3	230.0	163.7	208.6	165.4	168.6	198.8	265.4	194.4	206.0	159.7	193.7	November "

ወጪ ስርዓት ለጠቅላላ የምግብ ክፍሎች የሽያጭ ዋጋ መመዘኛ ሊንዲክስ ለአፋር ክልል ወገን ስርዓት
 ታህሳስ 1999 = 100

Table 4b: Consumer Price index of Total Food and Its Components for the Afar Regional State

December 2006 = 100

ወርና ዓመት	ጠቅላላ ምግብ	እህል	በቤት ውስጥ የተወሰዱ የምግብ ዓይነቶች										የምስረታ ለገልገሎት	ከቤት ውጪ የተወሰዱ ምግቦች	Month and Year	
			ጥራጥራ	ዳቦና ሌሎች የተዘጋጁ ምግቦች	ሥጋ	ወተት+ ዓይብና እንቁላል	ዘይትና ቅባቶች	አትክልትና ፍሬፍሬ	ቅመግ ቅመግ	ድንችና ሌሎች ሥራሥሮች	ቃልተቆላ ቤናና ሻይ ቅጠል	ሌሎች ምግቦች				የምስረታ ለገልገሎት
	Food Total	Cereals	Pulses	Bread and other Prepared Food	Meat	Milk,Cheese and Egg	Oils and Fats	Vegetables and Fruits	Spices	Potatoes, Other Tubers and Stems	Coffee (beans, whole) and Tea Leaves	Other Food Items	Milling Charges	Food taken away from home		
ታህሳስ 1999	100.0	100.0	100.0	100.0	100.0	100.0	100.0	100.0	100.0	100.0	100.0	100.0	100.0	100.0	100.0	December 2006
ሐምሌ 1999 - ሰኔ 2000	136.1	124.6	147.1	127.1	140.1	139.8	151.6	138.8	341.4	151.8	105.8	94.9	101.8	121.1	121.1	July 2007 - June 2008
ሐምሌ 2000 - ሰኔ 2001	189.5	206.5	205.3	229.3	178.5	180.0	174.1	192.5	275.7	233.8	143.2	137.1	119.7	170.3	170.3	July 2008 - June 2009
2001																2008/2009
ጥቅምት 2001	200.0	240.0	233.0	229.0	172.7	176.6	172.8	182.7	336.9	228.3	140.1	124.9	122.6	170.0	170.0	October "
ጥቅምት 2001	192.5	219.7	230.5	223.4	168.4	177.5	171.7	171.9	319.0	232.9	140.8	124.3	120.4	167.9	167.9	November "
ታህሳስ 2001	180.2	193.5	194.0	215.7	157.5	176.5	170.0	160.5	282.7	223.7	137.0	123.1	120.4	171.1	171.1	December "
ጥር 2001	180.1	190.1	197.1	212.8	166.8	182.7	169.4	159.7	246.1	223.3	138.8	135.6	120.4	168.9	168.9	January 2009
ፋብራሪ 2001	182.1	190.1	190.2	230.5	165.7	186.4	174.2	173.6	210.8	228.3	137.4	149.9	119.1	172.1	172.1	February "
መጋቢት 2001	181.5	188.1	188.4	241.6	167.9	177.0	175.9	195.4	203.9	232.4	136.9	149.3	119.1	173.1	173.1	March "
ግንቦት 2001	185.0	186.4	188.6	243.0	210.1	177.9	173.5	202.3	169.3	241.6	156.4	163.6	119.1	174.7	174.7	April "
ግንቦት 2001	185.3	186.6	185.7	244.5	203.2	177.7	167.6	262.3	155.3	246.1	154.4	161.2	119.1	171.4	171.4	May "
ሰኔ 2001	187.2	188.3	183.5	244.2	206.5	177.3	166.7	256.3	153.2	238.8	168.0	163.5	119.1	178.7	178.7	June "
2002																2009/2010
ሐምሌ 2001	188.4	193.2	185.4	241.9	193.1	176.5	169.2	237.4	171.6	242.5	171.1	174.0	119.1	178.3	178.3	July 2009
ክለሴ 2001	195.1	200.2	192.4	251.9	191.7	204.2	166.9	222.0	159.7	221.9	168.3	177.6	119.1	179.5	179.5	August "
መስከረም 2002	201.6	213.6	189.6	252.2	196.2	219.9	165.7	228.2	158.7	225.6	157.2	179.0	119.1	184.6	184.6	September "
ጥቅምት 2002	204.2	208.1	196.5	249.1	194.3	230.5	164.4	211.9	183.8	229.7	165.2	185.9	119.1	196.1	196.1	October "
ጥቅምት 2002	205.1	207.6	192.5	252.2	195.2	231.0	164.9	192.3	199.2	226.0	178.9	182.8	119.1	197.9	197.9	November "

ወንጠረኛ 5A:- ጠቅላላ የምግብ ክፍሎች የሽያጭ ዋጋ መመዘኛ ኢንዱስትሪ አላግራ ክልላዊ መንግሥት
 ታህሳስ 1999 = 100

Table 5b: Consumer Price Index of Total Food and Its Components for the Amhara Regional State
 December 2006 = 100

ወርና ዓመት	ጠቅላላ ምግብ	እህል	FOOD TAKEN AT HOME										ከቤት ውጪ የተወሰዱ ምግቦች	Month and Year		
			ጥራጥረ	ዳቦና ሌሎች የተዘጋጁ ምግቦች	ሥጋ	ወተት+ ዓይብና እንቁላል	ዘይትና ቅባቶች	እትክልትና ፍሬፍሬ	ትመግ ቅመም	ጽንቅና ሌሎች ሥራሥርቶች	ያልተቆላ ቤናና ሻይ ቅጠል	ሌሎች ምግቦች			የግብረጫ እገልግሎት	
ታህሳስ 1999	100.0	100.0	100.0	100.0	100.0	100.0	100.0	100.0	100.0	100.0	100.0	100.0	100.0	100.0	100.0	December 2006
ሐምሌ 1999 - ሰኔ 2000	139.6	137.6	117.9	131.0	117.8	125.6	161.8	129.4	297.0	122.1	125.2	105.8	106.7	121.4	121.4	July 2007 - June 2008
ሐምሌ 2000 - ሰኔ 2001	198.7	231.9	163.4	215.5	144.6	178.9	183.7	160.6	248.5	188.8	140.1	183.2	121.2	158.7	158.7	July 2008 - June 2009
2001																2008/2009
ጥቅምት 2001	220.9	271.0	172.9	218.1	142.2	173.6	189.7	135.7	323.6	176.4	142.8	161.0	124.9	156.3	156.3	October "
ኅዳር 2001	212.2	255.6	171.3	217.9	140.8	174.3	185.5	134.2	297.1	174.1	142.3	175.2	123.5	158.0	158.0	November "
ታህሳስ 2001	190.7	216.9	162.4	213.5	141.0	173.2	178.2	134.8	256.5	169.9	139.8	179.7	123.4	159.7	159.7	December "
ጥር 2001	187.8	215.2	160.5	214.6	142.5	175.0	178.6	138.2	214.2	165.8	140.7	196.2	120.0	161.1	161.1	January 2009
የኮቲት 2001	185.9	210.1	161.7	219.4	144.1	183.7	179.6	167.7	184.2	207.5	140.0	203.5	121.6	160.8	160.8	February "
መጋቢት 2001	184.0	208.7	153.0	220.8	148.4	184.9	177.9	179.6	164.3	208.0	139.7	203.1	124.0	164.2	164.2	March "
ጊያዝያ 2001	184.5	208.4	155.9	219.0	167.9	187.1	180.9	184.1	148.1	208.0	140.7	204.9	122.6	162.9	162.9	April "
ግንቦት 2001	180.8	201.3	156.8	222.0	149.1	188.5	183.5	202.7	144.3	208.6	140.1	206.0	125.2	163.8	163.8	May "
ሰኔ 2001	181.9	203.4	156.5	220.2	153.0	195.6	179.6	204.1	139.9	197.1	144.4	204.1	128.9	165.8	165.8	June "
2002																2009/2010
ሐምሌ 2001	187.4	212.4	157.0	225.0	151.2	193.9	179.0	180.6	165.9	197.7	146.1	206.4	133.6	168.5	168.5	July 2009
ኔሐሴ 2001	189.5	214.3	163.2	222.3	152.4	197.5	180.5	182.5	159.9	197.7	150.3	205.3	143.2	170.2	170.2	August "
መስከረም 2002	189.5	211.4	159.5	219.8	160.4	205.3	178.3	194.8	156.8	198.9	162.5	208.0	141.6	176.4	176.4	September "
ጥቅምት 2002	187.4	206.2	157.0	224.9	165.4	204.6	171.2	180.0	168.2	186.8	174.3	209.0	143.3	175.4	175.4	October "
ኅዳር 2002	184.2	199.8	148.9	228.7	156.7	201.9	168.7	155.8	177.0	187.9	195.2	213.4	142.5	178.7	178.7	November "

ሠንጠረዥ 6ሳ፡- ጠቅላላ የምግብና የምግብ ክፍሎች የ ሽግግር ዋጋ መመዘኛ ሊገደድበት ለሚችል የምዝ ክልላዊ መገንጠያ ጋራ 1999 = 100

Table 6b: Consumer Price Index of Total Food and Its Components for the Benishangul Gumuz Regional state
December 2006 = 100

ወርና ዓመት	ጠቅላላ የምግብ	እህል	በቤት ውስጥ የተወሰዱ የምግብ ዓይነቶች										የምግብ ለገልግሎት	ከቤት ውጭ የተወሰዱ የምግቦች	Month and Year
			ጥራጥራ	ዳቦና ሌሎች የተዘጋጁ የምግቦች	ሥጋ	ወተት+ ዓይብና እንቁላል	ዘይትና ቅባቶች	አትክልትና ፍሬፍሬ	ቅመግ ቅመጦች	ጽጌትና ሌሎች ሥራሥሮች	ያልተቆላ ቤናና ሻይ ቅጠል	ሌሎች የምግቦች			
	Food Total	Cereals	Pulses	Bread and other Prepared Food	Meat	Milk,Cheese and Egg	Oils and Fats	Vegetables and Fruits	Spices	Potatoes, Other Tubers and Stems	Coffee (beans, whole) and Tea Leaves	Other Food Items	Milling Charges	Food taken away from home	
ታህሳስ 1999	100.0	100.0	100.0	100.0	100.0	100.0	100.0	100.0	100.0	100.0	100.0	100.0	100.0	100.0	December 2006
ሐምሌ 1999 - ሰኔ 2000	148.2	160.9	112.5	129.7	131.1	108.5	142.4	116.6	366.2	127.0	128.5	105.1	111.1	117.8	July 2007 - June 2008
ሐምሌ 2000 - ሰኔ 2001	226.1	297.3	158.6	222.6	172.4	158.4	176.9	149.0	332.9	200.3	134.5	166.3	126.0	150.8	July 2008 - June 2009
2001															2008/2009
ጥቅምት 2001	246.6	341.4	158.8	219.1	181.7	153.2	169.2	135.4	401.7	214.3	139.9	146.7	135.9	142.3	October "
ጥቅምት 2001	237.8	326.7	142.5	224.1	175.0	155.6	171.5	132.2	381.3	209.1	136.7	155.0	129.4	143.1	November "
ታህሳስ 2001	215.0	272.5	141.8	234.8	173.3	159.2	192.5	174.0	289.2	205.6	130.8	169.8	122.2	152.2	December "
ጥር 2001	199.4	243.7	144.2	231.2	170.7	159.9	172.4	152.7	284.7	213.9	122.9	175.5	113.5	151.6	January 2009
ፀደቅ 2001	202.2	247.4	148.8	231.3	171.1	163.4	170.9	156.0	288.0	212.1	125.5	178.6	114.8	154.1	February "
መጋቢት 2001	206.8	255.9	140.1	234.5	172.2	165.9	167.8	166.7	289.6	174.8	130.7	180.3	124.6	158.6	March "
ግንቦት 2001	206.1	253.8	168.9	244.5	168.6	164.7	190.0	161.6	239.9	167.3	129.6	186.4	130.2	155.8	April "
ግንቦት 2001	205.1	254.0	170.2	242.8	168.4	164.6	193.2	160.5	196.6	172.7	132.9	183.4	126.0	159.5	May "
ሰኔ 2001	211.2	260.0	179.7	214.2	172.5	172.1	184.4	171.8	226.7	211.6	139.3	187.7	129.2	162.3	June "
2002															2009/2010
ሐምሌ 2001	225.5	290.9	183.7	224.2	177.6	179.5	177.4	160.8	212.7	198.2	146.7	187.1	129.9	171.2	July 2009
ክሌሌ 2001	227.3	294.6	176.8	228.7	184.1	182.0	178.8	152.3	212.3	182.1	159.2	187.6	145.4	168.3	August "
መስከረም 2002	226.1	290.8	168.3	230.2	179.9	185.1	176.1	162.5	195.7	199.5	176.5	187.7	151.5	167.5	September "
ጥቅምት 2002	208.8	248.3	173.1	233.8	174.0	183.1	173.8	157.2	195.7	197.0	189.7	187.5	157.4	173.9	October "
ጥቅምት 2002	204.0	237.0	142.8	218.6	156.1	194.8	170.9	150.7	224.4	172.3	231.4	194.7	153.8	178.0	November "

ወንጠረዥ 7A:- ጠቅላላ የምግብ ክፍሎች የ ሽግግር ዋጋ መመዘኛ ሊገደብን ለድረጃዎ ለተገዳደር ካውንስል
 ታህሳስ 1999 = 100

Table 7b: Consumer Price Index of Total Food and Its Components for the Dire Dawa Administrative Council
 December 2006 = 100

ወርና ዓመት	ጠቅላላ ምግብ	እህል	በቤት ውስጥ የተወሰዱ የምግብ ዓይነቶች										የምግብ ለገልግሎት	ከቤት ውጪ የተወሰዱ ምግቦች	Month and Year
			ጥራጥራ	ዳቦና ሌሎች የተዘጋጁ ምግቦች	ሥጋ	ወተት+ ዓይብና እንቁላል	ዘይትና ቅባቶች	አትክልትና ፍራፍራ	ቅመግ ቅመጦ	ድገትና ሌሎች ሥራሥሮች	ያልተቆላ ቤናና ሻይ ቅጠል	ሌሎች ምግቦች			
	Food Total	Cereals	Pulses	Bread and other Prepared Food	Meat	Milk,Cheese and Egg	Oils and Fats	Vegetables and Fruits	Spices	Potatoes, Other Tubers and Stems	Coffee (beans, whole) and Tea Leaves	Other Food Items	Milling Charges	Food taken away from home	
ታህሳስ 1999	100.0	100.0	100.0	100.0	100.0	100.0	100.0	100.0	100.0	100.0	100.0	100.0	100.0	100.0	December 2006
ሐምሌ 1999 - ሰኔ 2000	135.4	140.9	148.3	127.9	107.8	118.5	151.7	132.9	353.5	167.6	133.9	95.4	90.7	114.7	July 2007 - June 2008
ሐምሌ 2000 - ሰኔ 2001	199.5	240.3	197.8	236.8	130.0	177.9	183.5	183.0	298.6	221.9	161.8	114.0	95.5	176.8	July 2008 - June 2009
2000															2008/2009
ጥቅምት 2001	205.4	265.4	209.4	240.2	127.8	172.2	185.4	171.7	352.0	200.4	152.8	112.1	95.3	169.9	October "
ኅዳር 2001	200.7	244.8	208.9	242.3	131.1	178.7	180.7	157.1	325.4	205.3	163.3	112.5	95.3	170.0	November "
ታህሳስ 2001	197.8	233.8	199.6	246.0	128.4	176.5	176.7	153.3	341.9	208.8	173.2	114.0	95.3	154.7	December "
ጥር 2001	195.8	228.0	187.5	243.9	130.9	176.6	177.5	181.4	271.3	236.2	168.9	114.5	95.3	161.1	January 2009
የካቲት 2001	198.5	229.4	186.1	248.7	131.4	176.6	177.5	185.0	271.3	254.1	168.3	114.5	95.3	174.1	February "
መጋቢት 2001	199.5	228.8	191.0	252.3	124.3	187.7	187.2	194.4	217.5	245.2	170.7	115.3	95.3	174.2	March "
ጊያዝያ 2001	198.5	229.6	190.9	243.5	129.0	190.3	183.4	191.2	179.6	227.6	172.8	116.0	95.3	188.5	April "
ግንቦት 2001	198.4	228.8	191.7	247.4	132.4	189.3	178.7	220.1	164.5	205.0	164.7	116.0	95.3	186.9	May "
ሰኔ 2001	198.0	229.5	188.1	248.0	137.8	202.2	177.6	228.5	165.6	201.7	154.9	117.7	95.3	186.5	June "
2002															2009/2010
ሐምሌ 2001	198.4	229.2	187.5	244.9	140.9	194.1	176.0	218.5	204.2	214.0	165.4	116.5	104.9	172.7	July 2009
ኦገስት 2001	202.4	233.9	186.6	249.4	143.3	200.5	175.9	232.4	171.3	206.2	165.6	116.4	104.9	192.9	August "
መስከረም 2002	204.7	231.9	189.8	247.4	141.4	211.2	177.4	247.5	173.7	189.3	181.1	116.6	108.0	187.4	September "
ጥቅምት 2002	200.9	231.7	188.6	240.2	134.2	208.7	173.3	189.7	179.2	177.0	193.0	116.6	100.2	186.7	October "
ኅዳር 2002	196.3	224.8	183.4	240.5	132.5	220.4	175.4	157.6	196.8	150.6	197.4	115.7	104.9	163.5	November "

ሠንጠረዥ 8ለ፡- ጠቅላላ የምግብና የምግብ ክፍሎች የ ሽግግር ዋጋ መመዘኛ ሊገደዘስ ሊጋምብላ ሕዝቦች ክልላዊ መንግሥት
 ታህሳስ 1999 = 100

Table 8b: Consumer Price Index of Total Food and Its Components for the Gambela Peoples Regional State
 December 2006 = 100

ወርና ዓመት	ጠቅላላ የምግብ	እህል	FOOD TAKEN AT HOME										ከቤት ውጪ የተወሰዱ የምግቦች	Month and Year		
			ጥራጥራ	ዳቦና ሌሎች የተዘጋጁ የምግቦች	ሥጋ	ወተት+ ዓይብና እንቁላል	ዘይትና ቅባቶች	አትክልትና ፍራፍራ	ቅመግ ቅመግ	ድገትና ሌሎች ሥራሥሮች	ያልተቆላ ቤናና ሻይ ቅጠል	ሌሎች የምግቦች			የግብረጫ እገልግሎት	
ታህሳስ 1999	100.0	100.0	100.0	100.0	100.0	100.0	100.0	100.0	100.0	100.0	100.0	100.0	100.0	100.0	100.0	December 2006
ሐምሌ 1999 - ሰኔ 2000	133.8	124.8	141.2	167.1	131.8	131.5	150.1	138.5	411.3	142.3	124.0	112.4	110.4	133.2	133.2	July 2007 - June 2008
ሐምሌ 2000 - ሰኔ 2001	226.8	253.3	294.1	360.5	153.4	201.1	167.9	224.5	313.5	219.5	122.9	165.6	126.7	167.0	167.0	July 2008 - June 2009
2000																2008/2009
ጥቅምት 2001	271.2	338.0	308.1	366.5	145.2	179.6	166.3	244.8	433.9	237.2	133.5	165.9	129.1	167.8	167.8	October "
ኅዳር 2001	224.5	233.8	319.8	366.7	163.0	209.0	170.0	235.2	433.9	237.2	133.7	166.4	129.1	166.8	166.8	November "
ታህሳስ 2001	200.8	196.0	281.7	371.3	159.6	268.0	166.5	227.1	304.1	213.0	123.4	157.7	129.1	166.8	166.8	December "
ጥር 2001	198.9	198.0	281.2	361.4	158.8	226.4	169.8	217.8	219.0	212.3	123.8	165.3	132.2	166.8	166.8	January 2009
የካቲት 2001	198.5	196.7	281.3	354.0	159.9	212.5	170.1	222.2	219.0	219.8	110.3	172.1	132.2	166.8	166.8	February "
መጋቢት 2001	197.6	195.1	285.0	359.2	159.4	207.1	168.2	222.3	219.0	211.9	112.4	171.5	134.4	167.1	167.1	March "
ጊያዝያ 2001	201.9	206.7	297.3	357.3	154.0	208.8	166.7	218.2	192.6	214.6	105.4	164.4	136.5	167.1	167.1	April "
ግንቦት 2001	212.9	221.0	307.7	361.7	154.8	219.6	165.5	245.7	221.2	196.4	113.7	173.7	122.3	166.8	166.8	May "
ሰኔ 2001	220.3	231.2	307.6	371.8	156.7	222.6	163.9	261.2	217.5	197.2	116.9	180.5	115.5	167.7	167.7	June "
2002																2009/2010
ሐምሌ 2001	230.0	252.7	306.8	378.3	161.7	227.4	157.4	256.4	217.5	168.4	125.0	184.0	115.5	167.4	167.4	July 2009
ኦገስት 2001	232.7	258.3	313.3	355.9	164.1	227.5	158.9	253.1	146.0	182.6	135.2	183.9	115.5	167.7	167.7	August "
መስከረም 2002	221.4	229.9	300.0	375.1	165.7	231.8	162.1	260.9	146.0	196.0	159.2	179.2	115.5	168.9	168.9	September "
ጥቅምት 2002	208.4	202.1	278.7	374.8	164.3	229.7	166.6	255.8	170.3	230.8	167.8	186.3	131.6	169.6	169.6	October "
ኅዳር 2002	203.0	190.6	282.9	374.2	168.1	240.2	164.8	256.1	182.5	200.4	172.2	184.3	131.6	168.9	168.9	November "

ወንጠረዥ ዓለ፡- ጠቅላላ ምግብና የምግብ ክፍሎች የ ሽግግር ዋጋ መመዘኛ ሊገደብን ለሐረር ክልል መገንጠት ታህሳስ 1999 = 100

Table 9b: Consumer Price Index of Total Food and Its Components for the Harari People Regional State December 2006 = 100

ወርና ዓመት	ጠቅላላ ምግብ	እህል	በቤት ውስጥ የተወሰዱ የምግብ ዓይነቶች										የምስጢር እገልግሎት	ከቤት ውጪ የተወሰዱ ምግቦች	Month and Year	
			ጥራጥራ	ዳቦና ሌሎች የተዘጋጁ ምግቦች	ሥጋ	ወተት+ ዓይብና እንቁላል	ዘይትና ቅባቶች	አትክልትና ፍራፍራ	ቅመግ ቅመም	ጽጌትና ሌሎች ሥራሥሮች	ያልተቆላ ቤናና ሻይ ቅጠል	ሌሎች ምግቦች				የምስጢር እገልግሎት
ታህሳስ 1999	100.0	100.0	100.0	100.0	100.0	100.0	100.0	100.0	100.0	100.0	100.0	100.0	100.0	100.0	100.0	December 2006
ሐምሌ 1999 - ሰኔ 2000	130.4	128.3	129.6	124.0	112.4	120.7	160.5	154.9	312.5	182.1	119.6	101.4	101.9	123.1	July 2007 - June 2008	
ሐምሌ 2000 - ሰኔ 2001	205.1	228.0	164.6	244.8	141.2	154.9	191.3	171.7	285.4	227.0	216.9	120.4	125.9	177.8	July 2008 - June 2009	
2000															2008/2009	
ጥቅምት 2001	213.9	245.3	170.4	256.1	150.7	173.8	196.0	153.8	339.3	232.2	220.1	117.3	115.5	176.0	October "	
ጥቅምት 2001	207.3	234.4	163.7	252.1	138.9	171.7	189.0	155.7	326.5	232.2	210.9	121.4	115.5	180.1	November "	
ታህሳስ 2001	198.7	225.3	161.3	249.3	141.1	130.3	186.0	162.1	305.5	217.2	190.6	121.9	133.3	184.1	December "	
ጥር 2001	195.9	217.1	160.8	250.5	136.5	130.6	186.7	165.8	274.4	231.7	190.3	122.2	133.3	184.4	January 2009	
የካቲት 2001	202.8	217.1	165.2	248.9	135.4	131.3	192.6	169.1	245.7	231.7	229.8	122.2	133.3	177.8	February "	
መጋቢት 2001	201.9	217.4	161.1	243.9	139.0	137.5	191.6	165.8	216.7	231.1	229.7	122.2	133.3	178.0	March "	
ግንቦት 2001	202.3	218.7	165.3	240.0	132.2	150.8	184.8	184.7	191.5	222.2	230.7	122.2	133.3	178.1	April "	
ግንቦት 2001	202.6	213.3	169.5	240.1	140.2	154.3	178.5	205.7	178.0	175.6	238.2	123.8	133.3	178.7	May "	
ሰኔ 2001	206.5	219.5	166.4	229.2	148.8	157.3	177.5	211.3	154.4	166.7	251.7	122.2	133.3	188.3	June "	
2002															2009/2010	
ሐምሌ 2001	209.7	219.0	170.6	227.2	141.1	155.1	176.9	185.0	167.6	180.0	278.9	124.6	133.3	181.8	July 2009	
ክሌሌ 2001	203.6	219.8	179.1	232.6	149.1	168.7	172.0	202.6	175.8	143.3	233.1	123.0	133.3	186.6	August "	
መስከረም 2002	202.0	218.8	178.3	235.4	151.2	153.4	175.0	214.9	148.5	161.7	223.8	123.0	133.3	189.1	September "	
ጥቅምት 2002	208.9	214.8	162.1	224.4	149.1	160.0	176.6	197.8	158.0	166.7	278.9	122.2	133.3	186.6	October "	
ጥቅምት 2002	200.1	213.6	162.1	220.0	148.8	159.3	177.6	190.6	161.6	161.7	238.7	122.2	138.4	185.2	November "	

ሠንጠረዥ 10ለ፡- ጠቅላላ የምግብ ክፍሎች የ ሽግግር ዋጋ መመዘኛ ሊያደክስ ለአርጊያ ክልል የሚገኝበት ታህሳስ 1999 = 100

Table 10b: Consumer Price Index of Total Food and Its Components for the Oromiya Regional State December 2006 = 100

ወርና ዓመት	ጠቅላላ ምግብ	እህል	በቤት ውስጥ የተወሰዱ የምግብ ዓይነቶች										የምግብ ለገልገሎት	ከቤት ውጪ የተወሰዱ ምግቦች	Month and Year
			ጥራጥራ	ዳቦና ሌሎች የተዘጋጁ ምግቦች	ሥጋ	ወተት+ ዓይብና እንቁላል	ዜይትና ቅባቶች	አትክልትና ፍራፍራ	ቅመግ ቅመጦ	ድገትና ሌሎች ሥራሥሮች	ያልተቆላ ቤናና ሻይ ቅጠል	ሌሎች ምግቦች			
	Food Total	Cereals	Pulses	Bread and other Prepared Food	Meat	Milk,Cheese and Egg	Oils and Fats	Vegetables and Fruits	Spices	Potatoes, Other Tubers and Stems	Coffee (beans, whole) and Tea Leaves	Other Food Items	Milling Charges	Food taken away from home	
ታህሳስ 1999	100.0	100.0	100.0	100.0	100.0	100.0	100.0	100.0	100.0	100.0	100.0	100.0	100.0	100.0	December 2006
ሐምሌ 1999 - ሰኔ 2000	138.7	137.3	127.0	147.9	119.9	116.4	151.9	147.1	379.6	134.7	121.9	102.5	118.2	122.6	July 2007 - June 2008
ሐምሌ 2000 - ሰኔ 2001	202.0	242.8	175.2	238.0	152.0	155.2	163.5	176.6	314.2	204.1	142.0	161.6	133.9	156.2	July 2008 - June 2009
2000															2008/2009
ጥቅምት 2001	217.9	282.4	181.3	247.3	151.7	154.9	175.3	155.5	399.9	181.8	135.6	142.2	132.1	151.4	October "
ኅዳር 2001	204.1	252.4	178.8	250.2	151.3	153.1	168.9	154.1	356.2	181.7	138.2	149.2	129.7	152.0	November "
ታህሳስ 2001	183.9	212.1	161.5	234.3	149.5	144.4	159.5	152.5	312.1	182.8	139.9	152.5	127.2	151.5	December "
ጥር 2001	188.9	216.5	163.7	236.9	149.6	152.9	157.7	174.4	261.4	208.1	142.4	168.8	129.4	159.3	January 2009
የካቲት 2001	190.0	215.8	172.2	242.5	152.0	157.5	153.7	180.7	236.6	214.7	145.0	175.4	132.0	159.1	February "
መጋቢት 2001	189.3	210.3	169.2	236.7	151.7	155.2	155.7	205.8	209.1	225.1	150.9	176.9	132.1	163.4	March "
ጊያዝያ 2001	191.1	210.5	175.7	225.7	156.3	161.9	153.8	208.7	208.3	230.8	152.5	180.4	138.3	166.1	April "
ግንቦት 2001	189.4	208.3	181.5	234.8	156.1	168.5	153.0	211.2	190.9	213.9	149.1	184.9	141.1	165.7	May "
ሰኔ 2001	194.5	215.9	177.0	237.8	154.3	174.9	149.7	216.9	175.0	241.6	149.2	183.7	144.9	168.7	June "
2002															2009/2010
ሐምሌ 2001	192.7	221.1	176.5	239.5	154.6	169.1	149.9	178.7	205.5	193.5	154.6	188.1	144.9	169.7	July 2009
ክሌሌ 2001	192.2	221.3	168.2	238.8	156.2	167.2	156.1	181.2	195.1	182.2	158.5	185.9	146.9	172.2	August "
መስከረም 2002	192.4	213.0	172.6	242.3	166.1	175.4	162.4	198.0	189.9	194.1	161.1	187.7	151.1	176.6	September "
ጥቅምት 2002	184.1	194.0	170.5	246.0	160.6	171.1	160.8	187.3	200.5	188.5	171.1	170.9	149.0	179.1	October "
ኅዳር 2002	185.0	193.8	168.8	246.0	158.7	170.1	156.4	170.3	225.8	196.4	174.4	194.0	154.7	180.5	November "

ሠንጠረዥ 11ለ፡- ጠቅላላ የምግብና የምግብ ክፍሎች የ ሽግግር ዋጋ መመዘኛ ኢንዱስትሪ ለደብዳቤ ዘመን 2006 መገንጠያ ታህሳስ 1999 = 100

Table 11b: Consumer Price Index of Total Food and Its Components for the SNNP Regional State December 2006 = 100

ወርና ዓመት	ጠቅላላ የምግብ	እህል	FOOD TAKEN AT HOME										ከቤት ውጪ የተወሰዱ የምግቦች	Month and Year		
			ጥራጥራ	ዳቦና ሌሎች የተዘጋጁ የምግቦች	ሥጋ	ወተት+ ዓይብና እንቁላል	ዜይትና ቅባቶች	አትክልትና ፍራፍራ	ቅመግ ቅመግ	ድንችና ሌሎች ሥራሥሮች	ያልተቆላ ቤናና ሻይ ቅጠል	ሌሎች የምግቦች			የግብረጫ እገልገሎት	
ታህሳስ 1999	100.0	100.0	100.0	100.0	100.0	100.0	100.0	100.0	100.0	100.0	100.0	100.0	100.0	100.0	100.0	December 2006
ሐምሌ 1999 - ሰኔ 2000	131.1	136.1	122.9	126.9	121.5	119.2	143.7	146.8	264.5	117.1	132.2	112.2	106.0	107.1	107.1	July 2007 - June 2008
ሐምሌ 2000 - ሰኔ 2001	189.3	237.2	156.7	220.2	152.6	159.1	167.3	156.8	227.9	173.1	145.0	175.6	121.2	127.3	127.3	July 2008 - June 2009
2000																2008/2009
ጥቅምት 2001	201.6	270.1	151.6	225.1	162.2	152.8	169.6	140.5	285.2	171.3	160.0	160.4	119.9	124.0	124.0	October "
ኅዳር 2001	186.0	232.7	150.7	234.1	153.2	153.3	165.2	134.6	255.8	167.9	148.7	169.9	118.6	124.5	124.5	November "
ታህሳስ 2001	173.5	199.2	158.6	237.0	150.1	153.9	161.7	141.0	225.7	168.6	131.0	173.4	117.5	128.9	128.9	December "
ጥር 2001	173.1	200.6	158.7	220.4	149.0	157.8	160.5	145.6	197.0	169.9	129.6	179.9	116.7	128.4	128.4	January 2009
የካቲት 2001	174.9	194.8	159.5	218.9	142.6	171.2	161.7	166.8	168.2	180.8	139.5	191.3	123.5	129.8	129.8	February "
መጋቢት 2001	175.4	194.1	162.5	218.7	144.1	166.0	162.0	172.1	167.9	182.8	138.4	191.6	123.2	130.1	130.1	March "
ጊዳር 2001	180.2	202.7	161.6	215.8	148.1	166.9	184.3	181.8	166.3	184.7	139.6	190.6	121.7	131.2	131.2	April "
ግንቦት 2001	180.2	205.6	160.9	223.1	153.5	175.3	174.4	191.7	125.7	178.0	139.1	193.1	126.0	131.7	131.7	May "
ሰኔ 2001	182.1	209.6	163.3	225.0	156.8	174.2	171.7	195.8	126.8	176.3	143.1	190.2	124.8	132.9	132.9	June "
2002																2009/2010
ሐምሌ 2001	182.6	214.8	163.2	227.5	160.9	176.5	164.0	158.1	136.7	173.9	156.6	191.9	129.4	134.3	134.3	July 2009
ኔሐሴ 2001	184.5	217.9	165.0	233.2	162.9	180.6	164.5	160.1	131.9	168.6	170.3	193.0	131.6	137.8	137.8	August "
መስከረም 2002	181.4	194.2	165.0	234.2	162.9	188.8	172.1	172.7	140.8	178.2	192.9	196.0	130.9	140.5	140.5	September "
ጥቅምት 2002	182.8	190.1	165.3	230.6	165.1	190.5	171.2	182.4	158.7	188.9	184.5	201.3	134.6	142.8	142.8	October "
ኅዳር 2002	180.9	185.8	163.2	235.9	163.5	192.7	169.8	174.2	171.4	192.8	168.3	198.8	138.9	145.3	145.3	November "

ሠንጠረዥ 12b:- ጠቅላላ የምግብና የምግብ ክፍሎች የ ሽግግር ዋጋ መመዘኛ ሊንደክስ ለሰግሌ ክልል ድምጽ
 ታህሳስ 1999 = 100

Table 12b: Consumer Price Index of Total Food and Its Components for the Somali Regional State
 December 2006 = 100

ወርና ዓመት	ጠቅላላ ምግብ	እህል	FOOD TAKEN AT HOME										ከቤት ውጪ የተወሰዱ ምግቦች	Month and Year		
			ጥራጥራ	ዳቦና ሌሎች የተዘጋጁ ምግቦች	ሥጋ	ወተት+ ዓይብና እንቁላል	ዜይትና ቅባቶች	አትክልትና ፍራፍራ	ቅመግ ቅመግ	ድንችና ሌሎች ሥራሥሮች	ያልተቆላ ቤናና ሻይ ቅጠል	ሌሎች ምግቦች			የግብረጫ እገልገሎት	
ታህሳስ 1999	100.0	100.0	100.0	100.0	100.0	100.0	100.0	100.0	100.0	100.0	100.0	100.0	100.0	100.0	100.0	December 2006
ሐምሌ 1999 - ሰኔ 2000	124.6	136.0	124.9	120.3	126.3	103.1	138.8	128.3	299.8	145.0	115.8	102.8	99.2	120.5	157.8	July 2007 - June 2008
ሐምሌ 2000 - ሰኔ 2001	195.9	246.5	175.9	207.5	167.3	171.8	175.4	163.7	272.0	220.7	149.0	152.1	110.4	157.8	157.8	July 2008 - June 2009
2000																2008/2009
ጥቅምት 2001	202.5	275.9	190.2	211.8	162.1	166.2	178.3	168.0	333.3	195.2	120.3	156.6	110.1	152.1	152.1	October "
ኅዳር 2001	193.3	255.1	187.7	210.5	161.2	151.1	178.3	161.5	241.7	206.0	127.6	157.0	108.4	156.4	156.4	November "
ታህሳስ 2001	170.6	197.2	163.3	196.3	150.0	154.5	170.5	141.3	250.0	213.9	132.3	156.9	107.7	156.1	156.1	December "
ጥር 2001	185.4	217.0	163.9	204.8	168.4	170.2	167.8	159.7	250.0	225.1	158.0	156.7	102.5	149.7	149.7	January 2009
የካቲት 2001	194.0	227.8	166.1	214.3	169.3	180.6	175.2	149.1	250.0	216.5	172.2	157.3	104.4	156.7	156.7	February "
መጋቢት 2001	191.1	222.5	166.1	218.1	165.0	178.4	170.5	159.5	238.8	232.5	166.5	156.6	116.7	162.4	162.4	March "
ግንቦት 2001	194.6	218.7	169.4	215.7	179.8	204.8	170.8	166.1	225.0	241.6	171.5	157.0	116.7	165.3	165.3	April "
ግንቦት 2001	196.3	226.2	167.0	215.7	187.2	192.1	169.2	182.6	208.3	230.7	171.7	157.4	117.0	167.5	167.5	May "
ሰኔ 2001	203.8	230.0	172.1	206.0	180.1	201.6	170.3	204.4	175.0	199.1	202.7	157.2	124.3	175.6	175.6	June "
2002																2009/2010
ሐምሌ 2001	202.3	238.1	161.6	201.1	179.1	190.8	168.0	184.0	166.7	201.7	190.3	157.8	118.7	176.2	176.2	July 2009
ክሌሌ 2001	197.4	234.9	176.6	207.5	189.9	188.9	163.9	172.6	166.7	206.5	167.0	158.0	124.3	172.3	172.3	August "
መስከረም 2002	203.4	238.1	177.3	215.4	191.5	205.9	163.7	208.2	166.7	200.0	172.9	157.7	124.3	181.1	181.1	September "
ጥቅምት 2002	209.1	249.2	174.1	210.9	199.7	203.2	169.5	212.5	166.7	180.1	180.7	157.1	116.4	191.6	191.6	October "
ኅዳር 2002	199.7	232.4	168.2	213.1	203.6	191.7	167.7	182.7	183.3	204.3	171.9	157.6	115.9	193.8	193.8	November "

ሠንጠረዥ 13ሀ:- ጠቅላላ የምግብ ወርቀት የሽግግር ዋጋ መመዘኛ ሊያደክስ ለትግራይ ክልላዊ መንግሥት
 ታህሳስ 1999 = 100

Table 13b: Consumer Price Index of Total Food and Its Components for the Tigray Regional State
 December 2006 = 100

ወርቅ ዓመት	ጠቅላላ ምግብ	እህል	በቤት ውስጥ የተወሰዱ የምግብ ዓይነቶች										የምግብ አገልግሎት	ከቤት ውጪ የተወሰዱ ምግቦች	Month and Year
			ጥራጥራ	ዳቦና ሌሎች የተዘጋጁ ምግቦች	ሥጋ	ወተት+ ዓይብና እንቁላል	ዘይትና ቅባቶች	አትክልትና ፍራፍራ	ቅመግ ቅመጭ	ድገትና ሌሎች ሥራሥሮች	ያልተቆላ ቤናና ሻይ ቅጠል	ሌሎች ምግቦች			
	Food Total	Cereals	Pulses	Bread and other Prepared Food	Meat	Milk,Cheese and Egg	Oils and Fats	Vegetables and Fruits	Spices	Potatoes, Other Tubers and Stems	Coffee (beans, whole) and Tea Leaves	Other Food Items	Milling Charges	Food taken away from home	
ታህሳስ 1999	100.0	100.0	100.0	100.0	100.0	100.0	100.0	100.0	100.0	100.0	100.0	100.0	100.0	100.0	December 2006
ሐምሌ 1999 - ሰኔ 2000	143.4	138.5	129.3	126.5	122.8	114.8	166.5	122.5	345.0	149.0	127.1	104.2	113.7	124.7	July 2007 - June 2008
ሐምሌ 2000 - ሰኔ 2001	214.8	254.3	180.2	200.9	140.6	158.9	186.5	155.0	287.1	216.1	147.2	156.4	131.2	161.2	July 2008 - June 2009
2001															2008/2009
ጥቅምት 2001	241.1	289.5	202.2	201.6	141.4	161.2	195.2	169.4	410.8	197.4	140.9	140.4	123.9	165.1	October "
ኅዳር 2001	223.4	268.0	190.8	207.8	137.5	162.7	182.6	142.7	336.1	220.3	141.8	141.2	133.0	155.8	November "
ታህሳስ 2001	206.8	241.9	174.6	192.8	136.9	160.8	185.5	135.4	300.4	212.3	142.8	145.3	133.0	158.2	December "
ጥር 2001	200.8	235.7	165.5	191.5	140.3	157.8	179.8	138.6	254.4	203.1	139.9	159.2	125.2	158.8	January 2009
የካቲት 2001	200.2	235.4	173.7	195.4	139.3	159.7	180.4	150.8	193.1	208.3	148.6	170.3	134.2	164.4	February "
መጋቢት 2001	203.3	240.4	183.8	193.1	135.3	159.6	181.2	164.3	174.1	226.0	148.2	170.5	138.3	168.7	March "
ጊያዝያ 2001	203.7	243.8	178.1	200.8	138.8	160.4	176.3	163.8	158.8	236.6	152.0	169.3	137.2	162.7	April "
ግንቦት 2001	191.6	217.2	177.7	214.4	144.3	161.7	179.2	177.1	161.7	229.5	149.2	176.3	138.8	164.1	May "
ሰኔ 2001	194.3	221.5	173.0	216.1	149.2	171.8	174.9	169.6	163.6	236.6	151.8	177.5	143.1	169.7	June "
2002															2009/2010
ሐምሌ 2001	198.2	226.7	174.5	221.4	149.2	177.4	165.4	167.5	175.2	248.5	148.3	180.6	154.6	178.9	July 2009
ኦገስት 2001	200.2	231.5	173.0	219.9	156.3	179.4	161.0	160.9	153.9	244.5	148.6	181.2	166.1	181.1	August "
መስከረም 2002	197.6	222.6	173.9	216.7	165.2	180.7	167.1	176.6	143.4	229.5	170.5	181.3	167.3	180.3	September "
ጥቅምት 2002	202.7	231.9	172.1	216.5	156.5	184.7	170.3	169.4	154.4	188.1	184.8	186.9	160.5	182.8	October "
ኅዳር 2002	199.7	225.5	170.7	215.9	151.2	190.9	172.4	153.2	164.7	178.0	196.6	190.9	165.1	183.3	November "

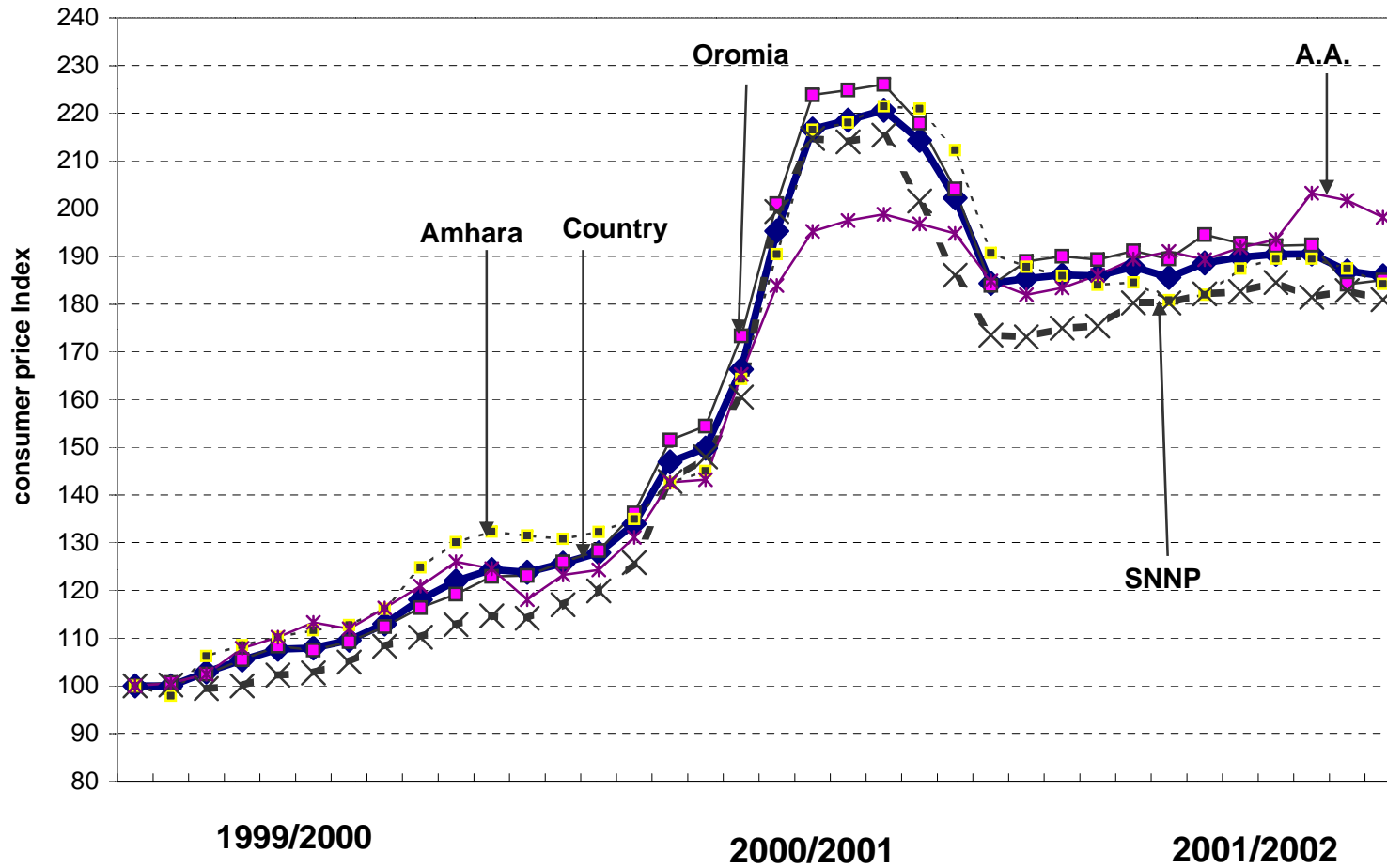
Food CPI for Country Level and Major Regions
 የምግብ የሽማጃዎች ዋጋ ኢንዱክስ ለአገር አቀፍና ለዋና ዋና ክልሎች

2007/2008

2008/2009

2009/2010

D J F M A M J J A S O N D J F M A M J J A S O N D J F M A M J J A S O N



የሽማጃዎች ዋጋ መመዘኛ ኢንዱክስ

General CPI for Country Level and Major Regions

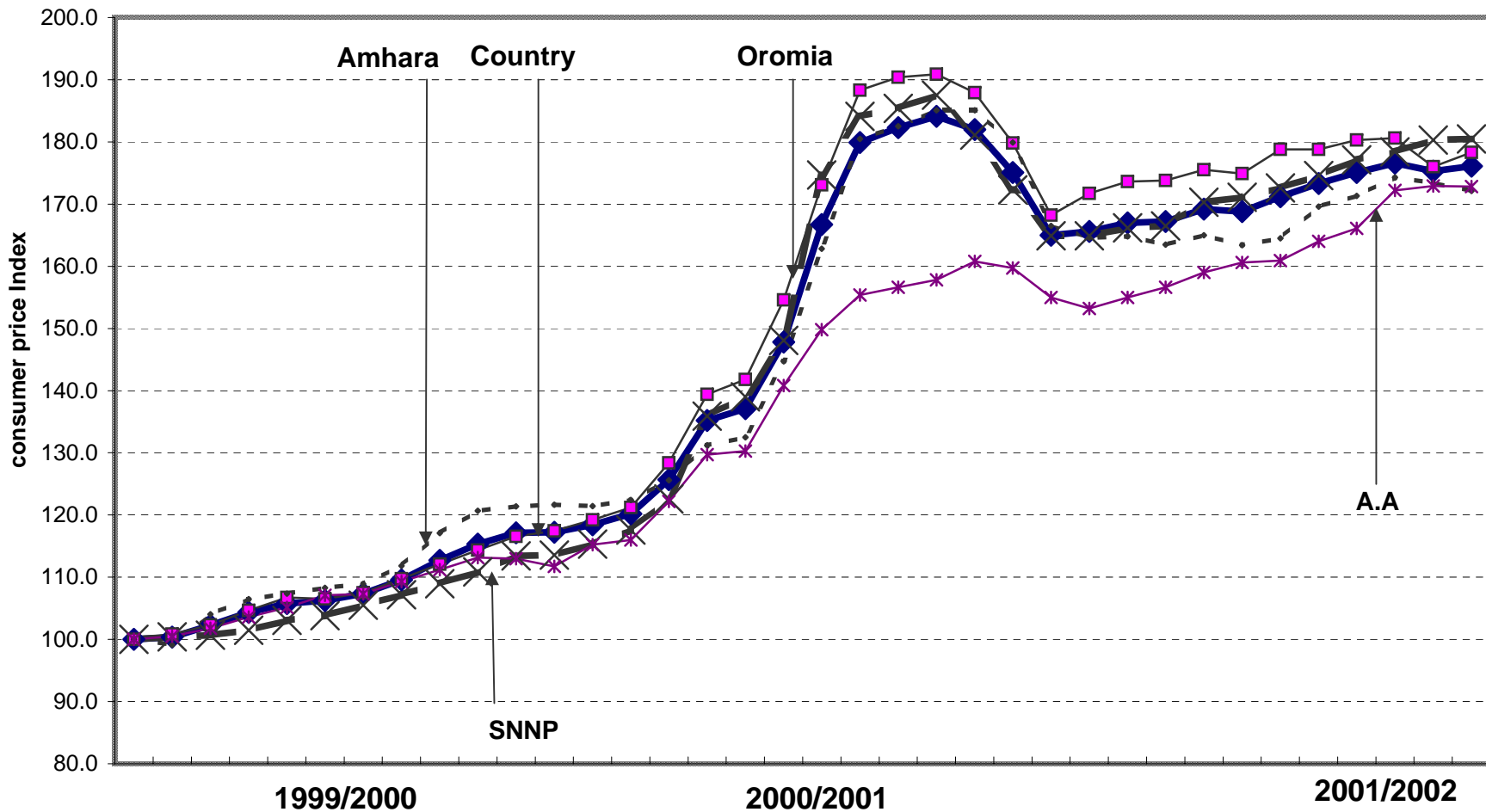
ጠቅላላ የሽያጭ ሰንጠረዥ ለአገር አቀፍና ለዋና ዋና ክልሎች

2007/2008

2008/2009

2009/2010

D J F M A M J J A S O N D J F M A M J J A S O N



የሽያጭ ሰንጠረዥ ለአገር አቀፍ

