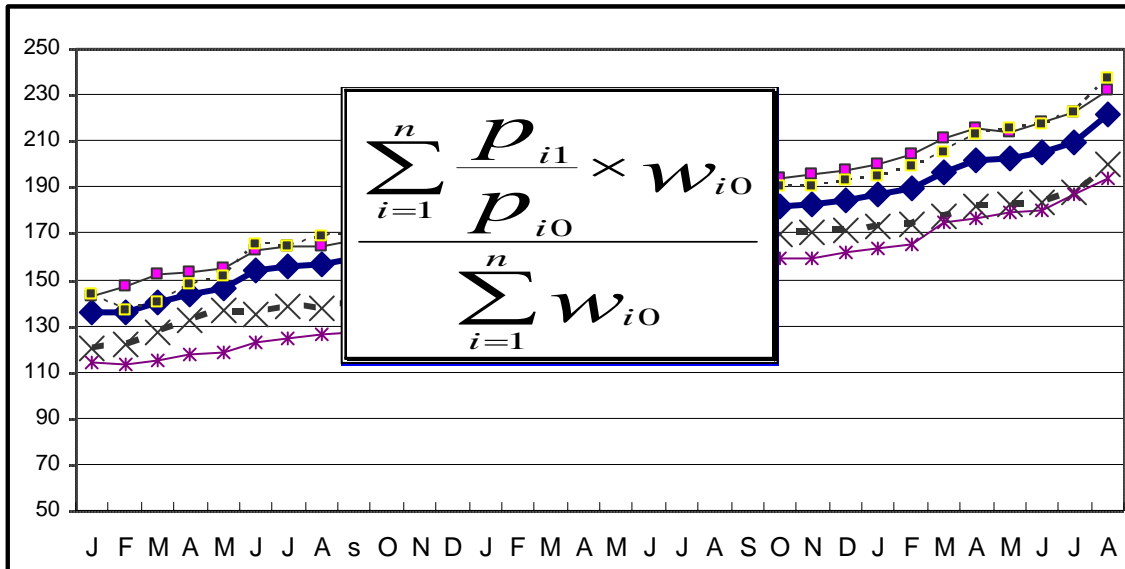


በኢትዮጵያ ፌዴራላዊ ዲሞክራሲያዊ ሪፐብሊክ
 የማዕከላዊ ስታቲስቲክስ ኤጀንሲ

THE FEDERAL DEMOCRATIC REPUBLIC OF ETHIOPIA
 CENTRAL STATISTICAL AGENCY

የአገር አቀፍና የክልሎች የሽማግሌት ዋጋ መመዘኛ ኢንዱክሶች
 የታህሳስ ወር 2003 ዓ.ም.
 [ታህሳስ 1999 = 100]
 መረጃ ቁጥር 39

COUNTRY AND REGIONAL LEVEL CONSUMER PRICE INDICES



[December 2006 = 100]
 For the month of December 2010
 Information No. 39

Tel: 251-11-1 553011
 Fax: 251-11-1550334.
 Email: csa@ethionet.et

አዲስ አበባ
 ጥር 2 ቀን 2003 ዓ.ም.
 ADDIS ABABA
 10 January 2011

መግቢያ..... 1
የወሩ ዋጋ ግሽበት ሁኔታ 7

የዘንድሮውና የአምናው ተመሳሳይ ወሮች የሽማቾች ዋጋ መመዘኛ ጠቋሚ አሀዝ ንፅፅር በአገር አቀፍ ደረጃ 10

የዘንድሮውና የአምናው ተመሳሳይ ወሮች የሽማቾች ዋጋ መመዘኛ ጠቋሚ አሀዝ ንፅፅር በአገር አቀፍና በክልሎች ደረጃ..... 11

የሠንጠረዦች ዝርዝር

ሠንጠረዥ ሀ፡ በጥናቱ የተሸፈኑ ገበያዎችና በኢንዱስትሪ ማዕቀፍ የተካተቱ ዕቃዎችና በዕቃዎች/አገልግሎቶች ብዛት በክልል..... 2

ሠንጠረዥ 1ሀ፡ ጠቅላላ የሽማቾች ዋጋ መመዘኛ ኤንደክስና በስሩ የተካተቱ ክፍሎች በአገር አቀፍ ደረጃ..... 13

ሠንጠረዥ 1ለ፡ ጠቅላላ ምግብና የምግብ ክፍሎች የሽማቾች ዋጋ መመዘኛ ኤንደክስ በአገር አቀፍ ደረጃ..... 14

ሠንጠረዥ 1ሐ፡ አገር አቀፍ የቤት ኪራይ፣ የቤት መስሪያ ዕቃዎች፣ ውሃና ኬነርጂ የሽማቾች ዋጋ መመዘኛ ኤንደክስ 15

ሠንጠረዥ 2ሀ፡ ጠቅላላ የሽማቾች ዋጋ መመዘኛ ኤንደክስ በአገር አቀፍና በክልሎች ደረጃ 16

ሠንጠረዥ 2ለ፡ የምግብ ዋጋ መመዘኛ ኤንደክስ ማጠቃለያ በአገር አቀፍ እና በክልሎች ደረጃ 18

ሠንጠረዥ 3ሀ፡ ጠቅላላ የሽማቾች ዋጋ መመዘኛ ኤንደክስና በስሩ የተካተቱ ክፍሎች ለአዲስ አበባ ከተማ መስተዳድር 20

ሠንጠረዥ 3ለ፡ ጠቅላላ ምግብና የምግብ ክፍሎች የሽማቾች ዋጋ መመዘኛ ኤንደክስ ለአዲስ አበባ ከተማ መስተዳድር 21

ሠንጠረዥ 4ሀ፡ ጠቅላላ የሽማቾች ዋጋ መመዘኛ ኤንደክስና በስሩ የተካተቱ ክፍሎች ለአፋር ክልላዊ መንግስት..... 22

ሠንጠረዥ 4ለ፡ ጠቅላላ ምግብና የምግብ ክፍሎች የሽማቾች ዋጋ መመዘኛ ኤንደክስ ለአፋር ክልላዊ መንግስት..... 23

ሠንጠረዥ 5ሀ፡ ጠቅላላ የሽማቾች ዋጋ መመዘኛ ኤንደክስና በስሩ የተካተቱ ክፍሎች ለአማራ ክልላዊ መንግስት..... 24

ሠንጠረዥ 5ለ፡ ጠቅላላ ምግብና የምግብ ክፍሎች የሽማቾች ዋጋ መመዘኛ ኤንደክስ ለአማራ ክልላዊ መንግስት..... 25

ሠንጠረዥ 6ሀ፡ ጠቅላላ የሽማቾች ዋጋ መመዘኛ ኤንደክስና በስሩ የተካተቱ ክፍሎች ለቤንሻንጉል-ጉሙዝ ክልላዊ መንግስት..... 26

ሠንጠረዥ 6ለ፡ ጠቅላላ ምግብና የምግብ ክፍሎች የሽማቾች ዋጋ መመዘኛ ለቤንሻንጉል-ጉሙዝ ክልላዊ መንግስት..... 27

<p>ሠንጠረዥ 7ሀ: ጠቅላላ የሸማቾች ዋጋ መመዘኛ ኤንደክስና በስሩ የተካተቱ ክፍሎች ለድሬደዋ አስተዳደር ካውንስል</p>	28
<p>ሠንጠረዥ 7ለ: ጠቅላላ ምግብና የምግብ ክፍሎች የሸማቾች ዋጋ መመዘኛ ለድሬደዋ አስተዳደር ካውንስል</p>	29
<p>ሠንጠረዥ 8ሀ: ጠቅላላ የሸማቾች ዋጋ መመዘኛ ኤንደክስና በስሩ የተካተቱ ክፍሎች ለጋምቤላ ህዝቦች ክልላዊ መንግስት</p>	30
<p>ሠንጠረዥ 8ለ: ጠቅላላ ምግብና የምግብ ክፍሎች የሸማቾች ዋጋ መመዘኛ ለጋምቤላ ህዝቦች ክልላዊ መንግስት</p>	31
<p>ሠንጠረዥ 9ሀ: ጠቅላላ የሸማቾች ዋጋ መመዘኛ ኤንደክስና በስሩ የተካተቱ ክፍሎች ለለሐረሪ ህዝብ ክልላዊ መንግስት</p>	32
<p>ሠንጠረዥ 9ለ: ጠቅላላ ምግብና የምግብ ክፍሎች የሸማቾች ዋጋ መመዘኛ ኤንደክስ ለለሐረሪ ህዝብ ክልላዊ መንግስት</p>	33
<p>ሠንጠረዥ 10ሀ: ጠቅላላ የሸማቾች ዋጋ መመዘኛ ኤንደክስና በስሩ የተካተቱ ክፍሎች ለአሮሚያ ክልላዊ መንግስት</p>	34
<p>ሠንጠረዥ 10ለ: ጠቅላላ ምግብና የምግብ ክፍሎች የሸማቾች ዋጋ መመዘኛ ኤንደክስ ለአሮሚያ ክልላዊ መንግስት</p>	35
<p>ሠንጠረዥ 11ሀ: ጠቅላላ የሸማቾች ዋጋ መመዘኛ ኤንደክስና በስሩ የተካተቱ ክፍሎች ለደ.ኢ.ብ.ብ.ሀ ክልላዊ መንግስት</p>	36
<p>ሠንጠረዥ 11ለ: ጠቅላላ ምግብና የምግብ ክፍሎች የሸማቾች ዋጋ መመዘኛ ኤንደክስ ለደ.ኢ.ብ.ብ.ሀ ክልላዊ መንግስት</p>	37
<p>ሠንጠረዥ 12ሀ: ጠቅላላ የሸማቾች ዋጋ መመዘኛ ኤንደክስና በስሩ የተካተቱ ክፍሎች ለሶማሌ ክልላዊ መንግስት</p>	38
<p>ሠንጠረዥ 12ለ: ጠቅላላ ምግብና የምግብ ክፍሎች የሸማቾች ዋጋ መመዘኛ ኤንደክስ ለሶማሌ ክልላዊ መንግስት</p>	39
<p>ሠንጠረዥ 13ሀ: ጠቅላላ የሸማቾች ዋጋ መመዘኛ ኤንደክስና በስሩ የተካተቱ ክፍሎች ለትግራይ ክልላዊ መንግስት</p>	38
<p>ሠንጠረዥ 13ለ: ጠቅላላ ምግብና የምግብ ክፍሎች የሸማቾች ዋጋ መመዘኛ</p>	41

CONTENTS

	Page
Introduction.....	4
Inflation Rate.....	8
Comparison of CPI Movements, Current Vs Last Year's Similar Months, at country Level.....	10
Comparison of CPI Movements, Current Vs Last Year's Similar Months, at country and Regional Levels.....	11

List of Tables

Table a: Number of Markets Covered and Basket of Commodities by Region.....	2
Table 1a: General Consumer Price Index and Its Components at Country Level.....	13
Table 1b: Consumer Price Index of Total Food and Its Components at Country Level.....	14
Table 1c: Consumer Price Index of House Rent, Construction Materials, Water, Fuel and Power and Its Components at Country Level.....	15
Table 2a: Summary of General Consumer Price Indices at Country and Regional Levels.....	16
Table 2b: Summary of Consumer Price Indices of Food at Country and Regional Levels.....	18
Table 3a: General Consumer Price Index and Its Components for the City of Addis Ababa Administration.....	20
Table 3b: Consumer Price Index of Total Food and Its Components for the City of Addis Ababa Administration.....	21
Table 4a: General Consumer Price Index and Its Components for the Afar Regional State.....	22
Table 4b: Consumer Price Index of Total Food and Its Components for the Afar Regional State.....	23

Table 5a: General Consumer Price Index and Its Components for the Amhara Regional State.....	24
Table 5b: Consumer Price Index of Total Food and Its Components for the Amhara Regional State.....	25
Table 6a: General Consumer Price Index and Its Components for the Benishangul-Gumuz Regional State.....	26
Table 6b: Consumer Price Index of Total Food and Its Components for the Benishangul-Gumuz Regional State.....	27
Table 7a: General Consumer Price Index and Its Components for the Dire Dawa Administrative Council.....	28
Table 7b: Consumer Price Index of Total Food and Its Components for the Dire Dawa Administrative Council.....	29
Table 8a: General Consumer Price Index and Its Components for the Gambela Peoples Regional State.....	30
Table 8b: Consumer Price Index of Total Food and Its Components for the Gambela Peoples Regional State.....	31
Table 9a: General Consumer Price Index and Its Components for the Harari Peoples Regional State.....	32
Table 9b: Consumer Price Index of Total Food and Its Components for the Harari Peoples Regional State.....	33
Table 10a: General Consumer Price Index and Its Components for the Oromia Regional State.....	34
Table 10b: Consumer Price Index of Total Food and Its Components for the Oromia Regional State.....	35
Table 11a: General Consumer Price Index and Its Components for the SNNP Regional State.....	36
Table 11b: Consumer Price Index of Total Food and Its Components for the SNNP Regional State.....	37
Table 12a: General Consumer Price Index and Its Components for the Somali Regional State.....	38
Table 12b: Consumer Price Index of Total Food and Its Components for the Somali Regional State.....	39
Table 13a: General Consumer Price Index and Its Components for the Tigray Regional State.....	40
Table 13b: Consumer Price Index of Total Food and Its Components for the Tigray Regional State.....	41

መግቢያ

የሽማግሌት ዋጋ መመዘኛ ኢንዱክሽን ማለት ሽማግሌት ለተወሰኑ ዕቃዎችና አገልግሎቶች የከፈሉትን አማካይ የዋጋ ለውጥ ለመለካት የሚያገለግል ጠቋሚ አህዝ ነው። የዋጋ መመዘኛ ኢንዱክሽን አብዛኛውን ጊዜ መሠረት የሚያደርገው የቤተሰብ ገቢ፣ ፍጆታና ወጪ ጥናት ወጤት በሆነው ቤተሰቦች በዕቃዎችና ግልጋሎቶች ላይ ባወጡት የመቶኛ ድርሻ መጠንና የወቅቱ የገበያ ዋጋ ላይ ነው። በዚህ ሪፖርት ውስጥ የተካተቱት 12 ኢንዱክሶች (የ11 ክልሎችና የአገር አቀፍ) መሠረት ያደረጉት የማዕከላዊ ስታቲስቲክስ ኤጀንሲ በ1996/97 በጀት ዓመት በመላ አገሪቱ በናሙና በተመረጡ ቦታዎች ያካሄደውን የቤተሰብ ገቢ፣ ፍጆታና ወጪ ጥናት ወጤት ነው።

ይህ ታህሳስ ወር 1999 ዓ.ምን መሠረት ያደረገው (ታህሳስ 1999=100) የሽማግሌት ዋጋ መመዘኛ ኢንዱክሽን በክልል ደረጃ ሲዘጋጅ በዓይነቱ ለሁለተኛ ጊዜ የተዘጋጀ ሲሆን በታህሣሥ 1993 ዓ.ም. መሠረት ያደረገውን የሽማግሌት መመዘኛ ኢንዱክሽን የሚተካ ነው። በአገር አቀፍ ደረጃ ከ1988 ጀምሮና በአዲስ አበባ ከተማ ደረጃ ደግሞ ከ1955 ዓ.ም ጀምሮ በየወሩ ተመሳሳይ ኢንዱክሶች እየተዘጋጁ ለተጠቃሚዎች ሲሰራጩ መቆየታቸው ይታወቃል። እነዚህ 12 የዋጋ መመዘኛ ኢንዱክሶች በአገሪቱ የሚገኙ 11 ክልሎችና የአገር አቀፍን ሪፖርት ጨምሮ የሚሸፍነው የዕቃዎችና የአገልግሎቶችን ክምችት በያዙ ሁለት ዋና ክፍሎች የተከፈሉ ናቸው። እነሱም፡- የምግብና ምግብ ነክ ያልሆኑ መመዘኛ ኢንዱክሶች ሲሆን ምግብ ነክ ያልሆኑ መመዘኛ ኢንዱክሽን እንደገና በ10 ንዑስ ክፍሎች ይከፈላል። እነዚህም መጠጥ፣ ሲጃራና ትምባሆ፣ ልብስና መጫሚያ፣ የቤት ኪራይ፣ የቤት መሥሪያ ዕቃዎች፣ ወሃና ኢነርጂ፣ የቤት ዕቃዎች፣ የቤት ማስገጫዎች፣ የቤት ቁሳቁስና የቤት ሠራተኛ ደመወዝ፣ ሕክምና፣ መንገዥና መገናኛ፣ መዝናኛና ትምህርት፣ የግል ንጽህናና የግል ቋሚ ዕቃዎች እንዲሁም ሌሎች ዕቃዎችና አገልግሎቶች ሲሆኑ የሁሉም ክፍሎች አጠቃላይ ወጤት የሚሆነው ደግሞ የጠቅላላ ዋጋዎች መመዘኛ ኢንዱክሽን ነው።

በሁሉም ክልሎች የጠቅላላ ዋጋ መመዘኛ ኢንዱክሶች ስሌት አብዛኛውን የመቶኛ ወጪ ድርሻ የሚይዘው የምግብ መመዘኛ ኢንዱክሽን ሲሆን በሁሉም የምግብ ዋጋ መመዘኛ ኢንዱክሶች ዋና ዋና ክፍሎች እህል፣ ጥራጥሬ፣ ዳቦና ሌሎች የተዘጋጁ ምግቦች፣ ሥጋ፣ ወተት፣ ዐይብና ዕንቁላል፣ ዘይትና ቅባቶች፣ አትክልትና ፍራፍሬ፣ ቅመማ ቅመም፣ ድንችና ሌሎች ሥራሥሮች፣ ያልተቆላ ቡናና ሻይ ቅጠል፣ ሌሎች ምግቦች፣ የማስፈጫ አገልግሎትና ከቤት ወጪ የተወሰዱ ምግቦች ናቸው።

ለዋጋ ኢንዱክሶቹ የተመረጡት ዕቃዎችና አገልግሎቶች የዋጋ መረጃ የሚሰበሰበው በየዞን/ በየልዩ ወረዳ በናሙና በተመረጡ ወካይ ከተሞች ውስጥ ባሉ የገበያ ቦታዎች ነው። በመሆኑም ከእያንዳንዱ ዞን ሁለት ከተሞች (የገበያ ቦታዎች) የተመረጡ ሲሆን እንደዚሁም በእያንዳንዱ ልዩ ወረዳ አንድ ከተማ (የገበያ ቦታ) በጥናቱ እንዲካተት ተደርጓል።

በእነዚህ ከተሞች ውስጥ ተመድበው ለሚሰሩ መረጃ ሰብሳቢዎች በየበጀት ዓመቱ መጨረሻ በመረጃ አሰባሰብ ዘዴው ላይ ስልጠና የሚሰጥ ሲሆን ለአሰባሰቡ የሚረዱ የመስክ መገልገያ መሣሪያዎች (ሚዛን፣ ሜተር ... ወዘተ) ይሰጣቸዋል። እነዚህ መሣሪያዎችን በመጠቀም በየወሩ የዋጋ መረጃዎችን ከነጋዴዎች ይሰበስባሉ። አንዳንድ ጊዜም አንድ በላተኛ ወይም ገዢ ከነጋዴ ሲገዛ ቢገኝና ለሥራው ተባባሪነቱን ካሳየ መረጃው ከርሱም ይሰበስባል። የችርቻሮ ዋጋ መረጃ የሚሰበሰበው እንደ አውሮፓውያን ዘመን አቆጣጠር ወሩ በገባ ከ1ኛው ቀን አንስቶ አስከ 15ኛው ቀን ነው። የክልል ኢንዱስትሪ ለማስላት ለኢንዱስትሪ ለተመረጡት ዕቃዎችና አገልግሎቶች አማካይ የችርቻሮ ዋጋቸውን የጂኦሜትሪክ ሚን ዘዴ ጥቅም ላይ ወሎአል። የኢንዱስትሪ ሪፖርቱም በየወሩ ለተጠቃሚዎች በዚህ መልክ ይቀርባል።

የአገር አቀፍ የችርቻሮ ዋጋ መመዘኛ ኢንዱስትሪ የሚሰላው እያንዳንዱ ክልል ለአገር አቀፍ የቤተሰብ ወጪ ያለውን የመቶኛ ድርሻ መሠረት በማድረግ ነው። በመሆኑም ለአገር አቀፍ ኢንዱስትሪ ስሌት ከ95 በመቶ በላይ አስተዋጽኦ የሚያደርጉ ክልሎች በቅደም ተከተል አሮሚያ፣ አማራ፣ የደቡብ ብሔር ብሔረሰቦችና ሕዝቦች፣ አዲስ አበባና ትግራይ ሲሆኑ የተቀሩት ክልሎች በየወሩ ለሚታዩው አገር አቀፍ የችርቻሮ ዋጋ መመዘኛ ኢንዱስትሪ ስሌት የሚኖራቸው አስተዋጽኦ ከአምስት በመቶ የማይበልጥ ነው።

ለችርቻሮ ዋጋ ጥናት በአጠቃላይ 119 የገበያ ቦታዎች የተመረጡ ሲሆን በእያንዳንዱ ክልል የተመረጡ የናሙና ገበያዎች ብዛትና በየኢንዱስትሪዎቻቸው ማዕቀፍ የተካተቱ ዕቃዎች/አገልግሎቶች ብዛት ከዚህ በታች ቀርቦአል።

ሠንጠረዥ ሀ: በጥናቱ የተሸፈኑ ገበያዎችና በኢንዱስትሪ ማዕቀፍ የተካተቱ ዕቃዎች/አገልግሎቶች ብዛት በክልል

Table A: Number of Markets Covered and Basket of Commodities by Region

ተራ ቁጥር	ክልል	የገበያ ቦታዎች ብዛት	በኢንዱስትሪ የተካተቱ ዕቃዎች/አገልግሎቶች ብዛት		Region
			ታህሳስ 1993=100	ታህሳስ 1999=100	
1	ትግራይ	8	114	143	Tigray
2	አፋር	4	85	153	Afar
3	አማራ	20	118	144	Amhara
4	አሮሚያ	24	127	161	Oromia
5	ሶማሌ	6	85	122	Somalie
6	ቤኒሻንጉል ጉምዝ	6	111	142	Benishangul-Gumuz
7	ደ.ብ.ብ.ሀ	31	130	152	SNNP
8	ጋምቤላ	3	105	103	Gambela
9	ሐረሪ	2	102	158	Harari
10	አዲስ አበባ ከተማ	12	175	193	Addis Ababa City Administration
11	ድራዳዋ አስተዳደር ድምር	3	121	150	Dire Dawa Administrative Total
Sr.No.		119	Basket of Commodities		
		Number of Markets			

ለጠቋሚ አሀዙ ክንዋኔ ዋናው ነገር በጠቋሚ አሀዙ ማዕቀፍ ተካትተው በዋናነት የሚያገለግሉ ዕቃዎችና አገልግሎቶች የመምረጥ ጉዳይ ነው። ጠቋሚ አሀዞች የሚመሠረቱት በአጠቃላይ በናሙና በሚመረጡ ዕቃዎች ላይ ሲሆን በጠቋሚ አሀዙ ማዕቀፍ ውስጥ መካተት የሚገባው ዕቃ መወሰን ግን ሁሌም ቀላል የሚባል ተግባር አይደለም። የተለያዩ የአመራረጥ ዘዴ መጠቀም ቢቻልም የሚመረጡት ዕቃዎች ለረጅም ጊዜ የሚኖራቸው ተፈላጊነት፣ በአስተማማኝ ሁኔታ በገበያ ላይ የመገኘታቸው ጉዳይ፣ ሌሎችን ዕቃዎች የመወከል ብቃትና ከሌሎች ምርቶች ጋር ያላቸው ተወዳዳሪነት መሠረት ያደረገ እንዲሆን ይፈለጋል። በአጠቃላይ የተመረጡት ዕቃዎች በበቂ መጠን የመገኘታቸው ሁኔታ፣ በየወቅቱ ተወዳዳሪነታቸውና ዕቃዎችና አገልግሎቶች ምድቡን የመወከላቸው ብቃትን ማረጋገጥ ያስፈልጋል።

ታህሳስ 1999 ዓ.ም. መሠረት ያደረገው የሸማቾች ዋጋ መመዘኛ ኢንዱክስ አይነቶችና እያንዳንዱ ዋና ክፍል ያለው የወጪ ድርሻ በገፅ 6 ላይ ይታያል። ይህ ሠንጠረዥ እንደሚያሳየው የምግብ የመቶኛ የወጪ ድርሻ ታህሳስ 1993 ዓ.ም. ከነበረው 60 በመቶ ወደ 57 በመቶ ቀንሷል። በአንጻሩ ደግሞ ምግብ ነክ ያልሆነ መመዘኛ ኢንዱክስ ታህሳስ 1993 ዓ.ም. ከነበረው 40 በመቶ የወጪ ድርሻ ወደ 43 በመቶ ከፍ ብሏል። ባጠቃላይ ሲታይ በሁሉም ክልሎች ኢንዱክስ ላይ የምግብ የወጪ ድርሻ የማይናቅ ቅናሽ ያሳየ ሲሆን ምግብ ነክ ያልሆኑ የወጪ ድርሻ መጠነኛ እድገት አሳይታል።

Introduction

The Consumer Price Index (CPI) measures the average change in the price paid by consumers for a fixed market basket of goods and services. It is usually based on household expenditure weights of the goods and services in the basket and their current market prices. The twelve CPI's (i.e., the CPI's of the 11 Regions and the CPI at Country Level) presented in this report are based on the results of the Household Income, Consumption and Expenditure Survey (HICES) conducted by the Central Statistical Agency in 2004/2005 from which expenditure weights are derived for major household goods and services of that period and adjusted using the December 2006 retail prices of the goods and services as a base period.

The December 2006 based CPI updates the previous CPI series (i.e. December 2000 based) and the newly selected baskets are more diversified and the weights are more accurate. It also showed various improvements and incorporates non-food index as an independent group. The new series is constructed for country as a whole and Regional States including Dire Dawa and the Addis Ababa City Administration. However, similar indices had been utilized at Addis Ababa Level since 1963 and at Country, Urban and Rural Levels since 1995/96 and in Country and Regional level since 2000.

All the twelve general indices are divided into two major groups that is food and non-food index. The non-food index has ten major groups each, namely: Beverages; Cigarettes and Tobacco; Clothing and Footwear; House Rent, Construction Materials, Water, and Fuel and Power; Furniture, Furnishing, Household Equipment and Operation; Medical Care and Health; Transport and Communication; Recreation, Entertainment and Education; Personal Care and Effects; and Miscellaneous Goods and Services. On the other hand, the Food Index has 13 sub-groups. These are: Cereals; Pulses; Bread and Other Prepared Food; Meat; Milk, Cheese and Eggs; Vegetables and

Fruits; Oil and Fats Spices; Potatoes, Other Tubers and Stems; Coffee Beans (whole) and Tea Leaves; Other Food Items; Milling Charges; and Food taken Away from Home. Furthermore, the new CPI based on December 2006 includes more detailed #Housing, Construction materials, Water and Fuel and Power; components.

For the construction of the current consumer price indices, up to date data on retail prices are collected in the purposely selected sample market places located in representative urban centers in each zone/special weredas of the country. Hence, a total of 119 market places were selected for the retail price survey. In each market place an enumerator is assigned to undertaking the data collection activities. The price data is collected from the 1st day through 15th days of European Calendar month under consideration. To calculate the monthly regional consumer price indices, geometric means of prices of the specific regions are used. The distribution of the market place of each region and items included in the basket of commodities are given on Table A on page 2.

An important factor in constructing a Consumer Price Index is to select the representative basket of goods and services. Including all consumption items into the market basket of goods and services is both cumbersome and unnecessarily costly in term of data collection and processing. Furthermore, it doesn't make sense to include an insignificant weight into an index basket which could not move the price relative up or downwards compared to the general market trend. As a result, basket of goods and services included in the regional baskets are determined by expenditure cut-off point. The total numbers of items included in the regional basket in the December 2006 based indices are given in Table A on page 2.

Country level CPI aggregates the regional group indices and the contributions of the five relatively big regions in terms of the magnitude of the expenditure account for more than 95 percent. These regions are Oromiya, Amhara, SNNP, Addis Ababa and Tigray. On the other hand, the contributions of the remaining regions to the

Country Level Consumer Price Index is about five percent.

According to the weights for food and non-food groups in Table B below, the December 2006 based CPI is about 57 percent of household expenditure spent on the food component, which declined by 3 percentage points as compared to the December 2000 based CPI. On the other hand, the expenditure on non-food components increased from 40 percent to 43 percent. This indicates that the economic situation in the country is going in the right direction as postulated by economic theory. Similarly, in this period larger regions resulted in a substantial decrease in the average weights for food, despite the increased food taken out of home. It was offset mainly by an increase in housing, construction materials, water and fuel and power, furnishing and transport and communication.

Table B: Major groups in the 2000 and 2006 based CPI and their weights at Country Level

No.	Major Group	Weights	
		2000 based CPI	2006 based CPI
1	Food	0.6008	0.5701
2	Non-Food	0.3992	0.4299
3	Beverages	0.0201	0.0202
4	Cigarettes and Tobacco	0.0051	0.0048
5	Clothing and Footwear	0.0926	0.0832
6	House Rent, Construction Materials, Water and Fuel and Power	0.1544	0.2056
7	Furniture, Furnishing, Household Equipment and Operation	0.0494	0.0375
8	Medical Care and Health	0.0120	0.0111
9	Transport and Communication	0.0199	0.0249
10	Recreation, Entertainment and Education	0.0101	0.0109
11	Personal Care and Effects	0.0092	0.0083
12	Miscellaneous Goods	0.0264	0.0234
	Total	1.000	1.000

የታህሳስ ወር 2003 ዓ.ም. የዋጋ ግሽበት ሁኔታ

ሀ) የ12 ወራት ተንከባላይ አማካይ አገራዊ የዋጋ ግሽበት

ከሠንጠረዥ #ሐ; መረዳት እንደሚቻለው በታህሳስ ወር 2003 ዓ.ም. የተመዘገበው የ12 ወራት ተንከባላይ አማካይ አገራዊ አጠቃላይ የዋጋ ግሽበት ካለፈው ዓመት ተመሳሳይ ወቅት ጋር ሲነጻጸር በ8.2 በመቶ ጭማሪ አሳይቶአል። በታህሳስ ወር 2003 ዓ.ም. አገራዊ የ12 ወራት ተንከባላይ አማካይ የምግብ የዋጋ ግሽበት በ1.5 ከመቶ ዕድገት አሳይቶአል። የ12 ወራት ተንከባላይ አማካይ አገራዊ ምግብ ነክ ያልሆኑ የዋጋ ግሽበትም በ19.1 ከመቶ ጭማሪ አሳይቶአል።

ከቅርብ ጊዜ ጀምሮ ከምግብ ክፍሎች ስንዴ፣ገብስ፣ በቆሎ፣ ጥራጥሬ፣ ዘይትና ቅባቶች እና ያልተቆላ ቡናና ሻይ ቅጠል ዋጋዎች በአንጻራዊነት በተከታታይ ጭማሪ በማሳየት ላይ ይገኛሉ። አትክልት (በተለይም ነጭና ቀይ ሽንኩርት)፣ በርቤሬና ቅምማ ቅመም እና ሌሎች ምግቦች በታህሳስ ወር 2003 በአንጻራዊነት ቅናሽ አሳይተዋል። በተመሳሳይ ሁኔታ ምግብ ነክ ያልሆኑ የኢንዱስትሪ ክፍሎች ጭማሪ በማስመዘገብ ላይ ሲሆኑ በተለይ የኮንስትራክሽን ዕቃዎች፣ ነዳጅ ፣ ልብስና መጫሚያ፣ የቤት ኪራይ፣ የቤት መሥሪያ ዕቃዎች፣ ትራንስፖርት፣ የቤት ዕቃዎችና የቤት ማስገጫዎች እና የግል ንጽህና ዕቃዎችና ጌጣጌጥ ዋጋ ጨምሮአል። በቅርቡ የታየው የዋጋ ጭማሪ ግን ካለፉት ዓመታት ከታየው ጭማሪ ጋር ሲነጻጸር የአሁኑ አነስተኛ መሆኑን ጠቋሚ አሃዙ ያመለክታል።

ለ) የዋጋ ግሽበት ሁኔታ ካለፈው ዓመት ተመሳሳይ ወር ጋር በማነፃፀር

ሠንጠረዥ (መ) የሚያሳየው የዋጋ ግሽበት ሁኔታ ካለፈው ዓመት ተመሳሳይ ወር ጋር በማነፃፀር ነው። ከሠንጠረዥ መረዳት እንደሚቻለው የታህሳስ ወር 2003 ዓ.ም አጠቃላይ የዋጋ ግሽበት ካለፈው ዓመት ታህሳስ ወር 2002 ዓ.ም ጋር ሲነጻጸር በ14.5 ከመቶ ከፍ ብሎአል። ለዚህ ጭማሪ ምክንያቱ በታህሳስ ወር 2003 ዓ.ም የተመዘገበው አጠቃላይ የዋጋ መመዘኛ ኢንዱስትሪ 202.4 ከመቶ በታህሳስ ወር 2002 ከተመዘገበው 176.7 ከመቶ አጠቃላይ የዋጋ መመዘኛ ኢንዱስትሪ በልጦ በመገኘቱ ነው። የምግብ ዋጋ ግሽበት የታህሳስ ወር 2003 ዓ.ም ካለፈው ዓመት ታህሳስ ወር 2002 ዓ.ም ጋር ሲነጻጸር በ8.9 ከመቶ ጭማሪ አሳይቶአል። ለዚህ ጭማሪ ምክንያቱ በታህሳስ ወር 2003 ዓ.ም የተመዘገበው የምግብ ዋጋ መመዘኛ ኢንዱስትሪ 202.1 ከመቶ በታህሳስ ወር 2002 ዓ.ም ከተመዘገበው 185.5 ከመቶ የምግብ ዋጋ መመዘኛ ኢንዱስትሪ በልጦ በመገኘቱ ነው። ይሁን እንጂ ካለፈው ዓመት ተመሳሳይ ወቅት ጋር ሲነጻጸር አጠቃላይ የእህል ዋጋ ግሽበት በ13 ከመቶ ቅናሽ አሳይቶአል። ምግብ ነክ ያልሆኑ የኢንዱስትሪ ክፍሎች የዋጋ ግሽበት የታህሳስ ወር 2003 ዓ.ም ካለፈው ዓመት ታህሳስ ወር 2002 ዓ.ም ጋር ሲነጻጸር የ22.9 በመቶ ጉልህ ጭማሪ አሳይቷል።

December 2010 Country Level Inflation Rate

a) 12 months Moving Average Inflation at Country Level

As it is indicated in Table 'C' below the country level overall inflation rate (annual change based on 12 months Moving Average) rose by 8.2 percent in December 2010 as compared to the one observed in a similar period a year ago. The country level food inflation increased by 1.5 percent as compared to the one observed a year ago. The country level Non-food inflation rate increased by 19.1 percent in December 2010 as compared to the one observed in December 2009.

In the recent months, most of the food components have shown a rise in their indices. Specially, the indices of Wheat, Barely, maize, Pulses, Oils and Fats, and Coffee and Tea leaves have relatively showed a rising trend. The indices of Vegetables (especially Onions and Garlic), Pepper whole and Spices and Other food items has relatively declined in December 2010. In regard to the non-food components majority of them showed an increasing trend; specially, the indices of Fuel, Clothing and Footwear, House Rent, Construction Materials, Furniture and Furnishing, Transport and Personal care and effects are on the rise. However, the recent rise in price inflation is smaller as compared to the one observed in the past few years.

b) Inflation based on comparison of Current vs. Last year's similar month at Country Level

Table (D) shows Inflation rate based on last year's similar month comparison. As can be seen from the table the December 2010 General year-on-year inflation has increased by 14.5 percent as compared to the one observed in December 2009. The 14.5 percent rise in General inflation rate is due to the fact that the General Consumer Price Index (CPI) of 202.4 percent observed in December 2010 was higher than the corresponding 176.7 percent General Consumer Price Index (CPI) observed in December 2009. The year-on-year Food inflation has increased by 8.9 percent in December 2010 as compared to the one observed in December 2009. The reason for the increase in the food Inflation rate was that the 202.1 percent Food Consumer Price Index (CPI) observed in December 2010 was greater than the corresponding 185.5 percent Food Consumer Price Index (CPI) observed in December 2009. However, the total price index of cereals in December 2010 has declined by 13.0 percent as compared to similar month last year. The Non-Food inflation significantly increased i.e by 22.9 percent in December 2010 as compared to the one observed in December 2009.

**የዘንድሮውና የአምናው ተመሳሳይ ወሮች የችርቻሮ ዋጋ መመዘኛ ጠቋሚ አሀዝ
ንፅፅር በአገር አቀፍ ደረጃ**

Comparison of CPI Movements, Current vs Last year's Similar Months at Country Level

ከሠንጠረዥ 1(ሀ) መረዳት እንደሚቻለው የታህሳስ ወር 2003 ዓ.ም የአገር አቀፍ ጠቅላላ የችርቻሮ ዋጋ ኢንዱክስ ከታህሳስ ወር 2002 ዓ.ም ጠቅላላ ኢንዱክስ ጋር ሲነፃፀር በ14.5 ከመቶ ጭማሪ አሳይቶአል። ለዚህ ጭማሪ ምክንያት የሆኑት ምግብ 8.9 ከመቶ፣ መጠጥ በ8.6 ከመቶ፣ ሲጋራና ትምባሆ 36.8 ከመቶ፣ ልብስና መጫሚያ በ29.5 ከመቶ፣ የቤት ኪራይ፣ የቤት መሥሪያ ፅቃዎች፣ ዉሃና ኢነርጂ በ22.3 ከመቶ፣ የቤት ፅቃዎች፣ ቤት ማስገጫዎች፣ የቤት ቁሳቁስና የቤት ሠራተኛ ደመወዝ በ24.1 ከመቶ፣ ህክምና 13.7 ከመቶ፣ ትራንስፖርትና መገናኛ በ19.7 ከመቶ፣ መዝናኛና ትምህርት በ26.0 ከመቶ፣ የግል ንጽህናና የግል ቋሚ ፅቃዎች በ28.6 ከመቶ እና ሌሎች ፅቃዎች በ9.3 ከመቶ በየኢንዱስትሪው ላይ ጭማሪ በማሳየታቸው ነው።

The December 2010 Country Level Consumer Price Index has increased by 14.5 percent as compared to December 2009 (Table 1(a)). This increase in the General Consumer Price Index is attributed to the rise observed in the indices of Food 8.9 percent, Beverages by 8.6 percent, Cigarettes and Tobacco by 39.8 percent, Clothing and Footwear by 29.5 percent, House Rent, Construction Materials, Water and Fuel and Power by 22.3 percent, Furniture, Furnishings, Household Equipment and Operation by 24.1 percent, Medical Care and Health by 13.7 percent, Transport and Communication by 19.7 percent, Recreation, Entertainment and Education by 26.0 percent, Personal Care Effects by 28.6 percent and Miscellaneous Goods by 9.3 percent .

ሠንጠረዥ 1(ለ) እንደሚያሳየው (ከእህል በስተቀር) ካለፈው ዓመት ተመሳሳይ ወር ጋር ሲነፃፀር አብዛኛዎቹ የምግብ ክፍሎች ጭማሪ አሳይተዋል። በተለይም ጥራጥሬ በ21.6 ከመቶ፣ በዳቦና ሌሎች የተዘጋጁ ምግቦች በ1.3 ከመቶ፣ ሥጋ በ17.2 ከመቶ፣ ወተት፣ አይብና ዕንቁላል በ16.1 ከመቶ፣ ዘይትና ቅባቶች በ46.7 ከመቶ፣ አትክልትና ፍራፍሬ በ65.7 ከመቶ፣ ቅመማ ቅመም በ31.6 ከመቶ፣ ድንችና ሌሎች ስራ ስሮች በ8.6 ከመቶ፣ ያልተቆሳ ቡናና ሻይ ቅጠል በ46.8 ከመቶ፣ ሌሎች ምግቦች በ7.3 ከመቶ፣ የማስፈጫ አገልግሎት በ13.7 ከመቶ እና ከቤት ውጭ የተወሰዱ ምግቦች በ15.2 ከመቶ ዕድገት በየኢንዱስትሪው ላይ አሳይተዋል። በሌላ በኩል እህል በ13.0 ከመቶ በኢንዱስትሪ ላይ ቅናሽ አሳይቶአል።

Most of the components of Food index (except cereals) showed increases as compared to similar month last year (Table 1(b)). Especially, Pulses (21.6 percent), Bread and Other Prepared Food (1.3 percent), Meat (17.2 percent), Milk, Cheese and Eggs (16.1 percent), oils and Fats (46.7 percent), Vegetables and fruits (65.7 percent), Spices by (31.6 percent), Potatoes, Other Tubers and Stems (8.6 percent), Coffee and Tea Leaves (46.8 percent), Other Food Items (7.3 percent), Milling Charge by (13.7 percent), and Food Taken Away from Home (15.2 percent) respectively. On the other hand, decline was observed in the index of Cereals by (13.0 percent).

**የዘንድሮውና የአምናው ተመሳሳይ ወሮች
የችርቻሮ ዋጋ መመዘኛ ጠቋሚ አሀዝ ንፅፅር በአገር አቀፍና በክልሎች ደረጃ**
Comparison of CPI Movements, Current vs Last year at Country and
Regional Levels

ከሠንጠረዥ 2(ሀ) መረዳት እንደሚቻለው የታህሳስ ወር 2003 ዓ.ም የአገር አቀፍ ጠቅላላ የችርቻሮ ዋጋ መመዘኛ ኢንዱስትሪ ከታህሳስ ወር 2002 ዓ.ም ጠቅላላ ኢንዱስትሪ ጋር ሲነፃፀር በ14.5 ከመቶ ጭማሪ አሳይቶአል። ለዚህ ጭማሪ አስተዋጽኦ ያደረጉት አዲስ አበባ 18.6 ከመቶ፣ አፋር 14.3 ከመቶ፣ አማራ 12.5 ከመቶ፣ ቤኔሻንጉል ጉሙዝ 0.4 ከመቶ፣ ድሬዳዋ 14.9 ከመቶ፣ ጋምቤላ 11.9 ከመቶ፣ ሐረሪ 16.9 ከመቶ፣ ኦሮሚያ 16.6 ከመቶ፣ ደቡብ ብሄሮች ብሄረሰቦችና ሕዝቦች 13.6 ከመቶ፣ ሶማሌ 22.7 ከመቶ እና ትግራይ 4.5 ከመቶ በኢንዱስትሪው ላይ ጭማሪ በማሳየታቸው ነው።

Table 2(a) also displays that the December 2010 Country level General Consumer Price Index has increased by 14.5 percent as compared to December 2009. This increase was attributed to the rise in the indices of its constituent regions; namely: Addis Ababa 18.6 percent, Afar 14.3 percent, Amhara 12.5 percent, Benishangul Gumuz 0.4 percent, Dire Dawa 14.9 percent, Gambella 11.9 percent, Harari 16.9 percent, Oromia 16.6 percent, SNNP by 13.6 percent, Somali 22.7 percent and Tigray 4.5 percent

ሠንጠረዥ 2(ለ) እንደሚያሳየው ለምግብ እንደክስ በ8.9 ከመቶ መጨመር ምክንያት የሆኑት አዲስ አበባ በ11.9 ከመቶ፣ አፋር በ7.6 ከመቶ፣ አማራ በ5.8 ከመቶ፣ ቤኔራዳዋ በ12.5 ከመቶ፣ ጋምቤላ በ7.2 ከመቶ፣ ሐረሪ በ15.4 ከመቶ፣ ኦሮሚያ 12.1 ከመቶ፣ ደቡብ ብሄሮች፣ ብሄረሰቦችና ሕዝቦች በ8.4 ከመቶ እና ሶማሌ በ24.9 ከመቶ በምግብ ኢንዱስትሪው ላይ ጭማሪ አሳይተዋል። በሌላ በኩል ቤኔሻንጉል ጉሙዝ በ12.3 ከመቶ እና ትግራይ በ2.3 ከመቶ በምግብ በኢንዱስትሪው ላይ ቅናሽ አሳይተዋል።

Table 2(b) reveals the rise in the food index by 8.9 percent is due to the rise in the indices of the regions namely: Addis Ababa 11.9 percent, Afar 7.6 percent, Amhara 5.8 percent, Dire Dawa 12.5 percent, Gambella 7.2 percent, Harari 15.4 percent, Oromia 12.1 percent, SNNP 8.4 percent and Somali 24.9 percent. On the other hand, declines were observed in the indices of Benishangul Gumuz 12.3 percent and and Tigray 2.3 percent.

**የዘንድሮውና የአምናው ተመሳሳይ ወሮች
የችርቻሮ ዋጋ መመዘኛ ጠቋሚ አሀዝ ንፅፅር በአገር አቀፍና በክልሎች ደረጃ**
Comparison of CPI Movements, Current vs Last year at Country and
Regional Levels

ከሠንጠረዥ 2(ሀ) መረዳት እንደሚቻለው የታህሳስ ወር 2003 ዓ.ም የአገር አቀፍ ጠቅላላ የችርቻሮ ዋጋ መመዘኛ ኢንዱስትሪ ታህሳስ ወር 2002 ዓ.ም ጠቅላላ ኢንዱስትሪ ጋር ሲነፃፀር በ14.5 ከመቶ ጭማሪ አሳይቶአል። ለዚህ ጭማሪ አስተዋጽኦ ያደረጉት አዲስ አበባ 18.6 ከመቶ፣ አፋር 14.3 ከመቶ፣ አማራ 12.5 ከመቶ፣ ቤኔሻንጉል ጉሙዝ 0.4 ከመቶ፣ ድሬዳዋ 14.9 ከመቶ፣ ጋምቤላ 11.9 ከመቶ፣ ሐረሪ 16.9 ከመቶ፣ ኦሮሚያ 16.6 ከመቶ፣ ደቡብ ብሄሮች ብሄረሰቦችና ሕዝቦች 13.6 ከመቶ፣ ሶማሌ 22.7 ከመቶ እና ተግራይ 4.5 ከመቶ በኢንዱስትሪው ላይ ጭማሪ በማሳየታቸው ነው።

Table 2(a) also displays that the December 2010 Country level General Consumer Price Index has increased by 14.5 percent as compared to December 2009. This increase was attributed to the rise in the indices of its constituent regions; namely: Addis Ababa 18.6 percent, Afar 14.3 percent, Amhara 12.5 percent, Benishangul Gumuz 0.4 percent, Dire Dawa 14.9 percent, Gambella 11.9 percent, Harari 16.9 percent, Oromia 16.6 percent, SNNP by 13.6 percent, Somali 22.7 percent and Tigray 4.5 percent

ሠንጠረዥ 2(ለ) እንደሚያሳየው ለምግብ እንደክስ በ8.9 ከመቶ መጨመር ምክንያት የሆኑት አዲስ አበባ በ11.9 ከመቶ፣ አፋር በ7.6 ከመቶ፣ አማራ በ5.8 ከመቶ፣ ቤኔሻንጉል በ12.5 ከመቶ፣ ጋምቤላ በ7.2 ከመቶ፣ ሐረሪ በ15.4 ከመቶ፣ ኦሮሚያ 12.1 ከመቶ፣ ደቡብ ብሄሮች፣ ብሄረሰቦችና ሕዝቦች በ8.4 ከመቶ እና ሶማሌ በ24.9 ከመቶ በምግብ ኢንዱስትሪው ላይ ጭማሪ አሳይተዋል። በሌላ በኩል ቤኔሻንጉል ጉሙዝ በ12.3 ከመቶ እና ተግራይ በ2.3 ከመቶ በምግብ በኢንዱስትሪው ላይ ቅናሽ አሳይተዋል።

Table 2(b) reveals the rise in the food index by 8.9 percent is due to the rise in the indices of the regions namely: Addis Ababa 11.9 percent, Afar 7.6 percent, Amhara 5.8 percent, Dire Dawa 12.5 percent, Gambella 7.2 percent, Harari 15.4 percent, Oromia 12.1 percent, SNNP 8.4 percent and Somali 24.9 percent. On the other hand, declines were observed in the indices of Benishangul Gumuz 12.3 percent and and Tigray 2.3 percent.

ሠንጠረዥ ሐ: በአገር አቀፍ ደረጃ የ12 ወራት ተንከባላይ አማካይ የዋጋ ግሽበት ሁኔታ

Table C: The Country Level 12 months Moving Average Inflation Rate

በጀት ዓመት (ወር)	የዋጋ ግሽበት ሁኔታ			Budget Year and months
	አጠቃላይ የዋጋ ግሽበት	የምግብ የዋጋ ግሽበት	የምግብ ነክ ያልሆኑ የዋጋ ግሽበት	
በጀት ዓመት በወራት				Budget Year in Months
ዓመታዊ አማካይ (ሐምሌ 1999 - ሰኔ 2000)	18.4	23.6	11.6	Annual Average (September 2007 - June 2008)
ዓመታዊ አማካይ (ሐምሌ 2000 - ሰኔ 2001)	40.6	54.1	21.0	Annual Average (September 2008 - June 2009)
ዓመታዊ አማካይ (ሐምሌ 2001 - ሰኔ 2002)	10.8	6.4	19.1	Annual Average (September 2009 - June 2010)
ታህሳስ 2002	8.5	3.3	18.2	December 2009
ጥር 2002	6.6	0.7	17.8	January 2010
የካቲት 2002	5.0	-1.6	17.6	February 2010
መጋቢት 2002	3.9	-3.3	17.7	March 2010
ሚያዝያ 2002	2.9	-4.9	17.7	April 2010
ግንቦት 2002	2.4	-5.7	17.8	May 2010
ሰኔ 2002	2.8	-5.4	18.2	June 2010
ሐምሌ 2002	3.6	-4.5	18.4	July 2010
ነሐሴ 2002	4.4	-3.4	18.4	August 2010
መስከረም 2003	5.4	-2.0	18.4	September 2010
ጥቅምት 2003	6.7	-0.4	18.7	October 2010
ኅዳር 2003	7.5	0.8	18.6	November 2010
ታህሳስ 2003	8.2	1.5	19.1	December 2010
Budget Year	Inflation Rate			
	Overall Inflation rate	Food Inflation rate	Non-food Inflation rate	

ሠንጠረዥ መ: የዘንድሮውና የአምናው ተመሳሳይ ወሮች የሽማግሌት ዋጋ መመዘኛ ኢንዱስትሪ

ለውጥ ንፅፅር በአገር አቀፍ ደረጃ ማጠቃለያ

Table D: Summary of Comparison of CPI Movements, Current vs. Last year's Similar Months at Country Level

በጀት ዓመት (ወር)	የዋጋ ግሽበት ሁኔታ ካለፈው ዓመት ተመሳሳይ ወር ጋር ሲነፃፀር			Budget Year and months
	አጠቃላይ የዋጋ ግሽበት	የምግብ የዋጋ ግሽበት	የምግብ ነክ ያልሆኑ የዋጋ ግሽበት	
በጀት ዓመት በወራት				Budget Year in Months
ዓመታዊ አማካይ (ሐምሌ 1999 - ሰኔ 2000)	24.9	34.2	12.3	Annual Average (July 2007 - June 2008)
ዓመታዊ አማካይ (ሐምሌ 2000 - ሰኔ 2001)	38.7	48.6	24.1	Annual Average (July 2008 - June 2009)
ዓመታዊ አማካይ (ሐምሌ 2001 - ሰኔ 2002)	3.0	-5.0	18.1	Annual Average (July 2009 - June 2010)
ታህሳስ 2002	7.1	0.6	18.3	December 2009
ጥር 2002	7.6	0.4	20.3	January 2010
የካቲት 2002	7.1	-0.2	19.8	February 2010
መጋቢት 2002	7.4	-0.1	20.4	March 2010
ሚያዝያ 2002	6.8	-0.8	19.8	April 2010
ግንቦት 2002	7.4	0.1	19.8	May 2010
ሰኔ 2002	7.3	0.0	19.8	June 2010
ሐምሌ 2002	5.7	-1.6	17.7	July 2010
ነሐሴ 2002	5.3	-1.1	15.6	August 2010
መስከረም 2003	7.5	1.4	17.2	September 2010
ጥቅምት 2003	10.6	5.4	18.7	October 2010
ኅዳር 2003	10.2	5.8	16.7	November 2010
ታህሳስ 2003	14.5	8.9	22.9	December 2010
Budget Year	Inflation Rate based on last year's similar month comparison			
	Overall Inflation rate	Food Inflation rate	Non-food Inflation rate	

General CPI for Country Level and Major Regions

የሽማግሌ ዋጋ ኢንዱክስ ለአገር አቀፍና ለዋና ዋና ክልሎች

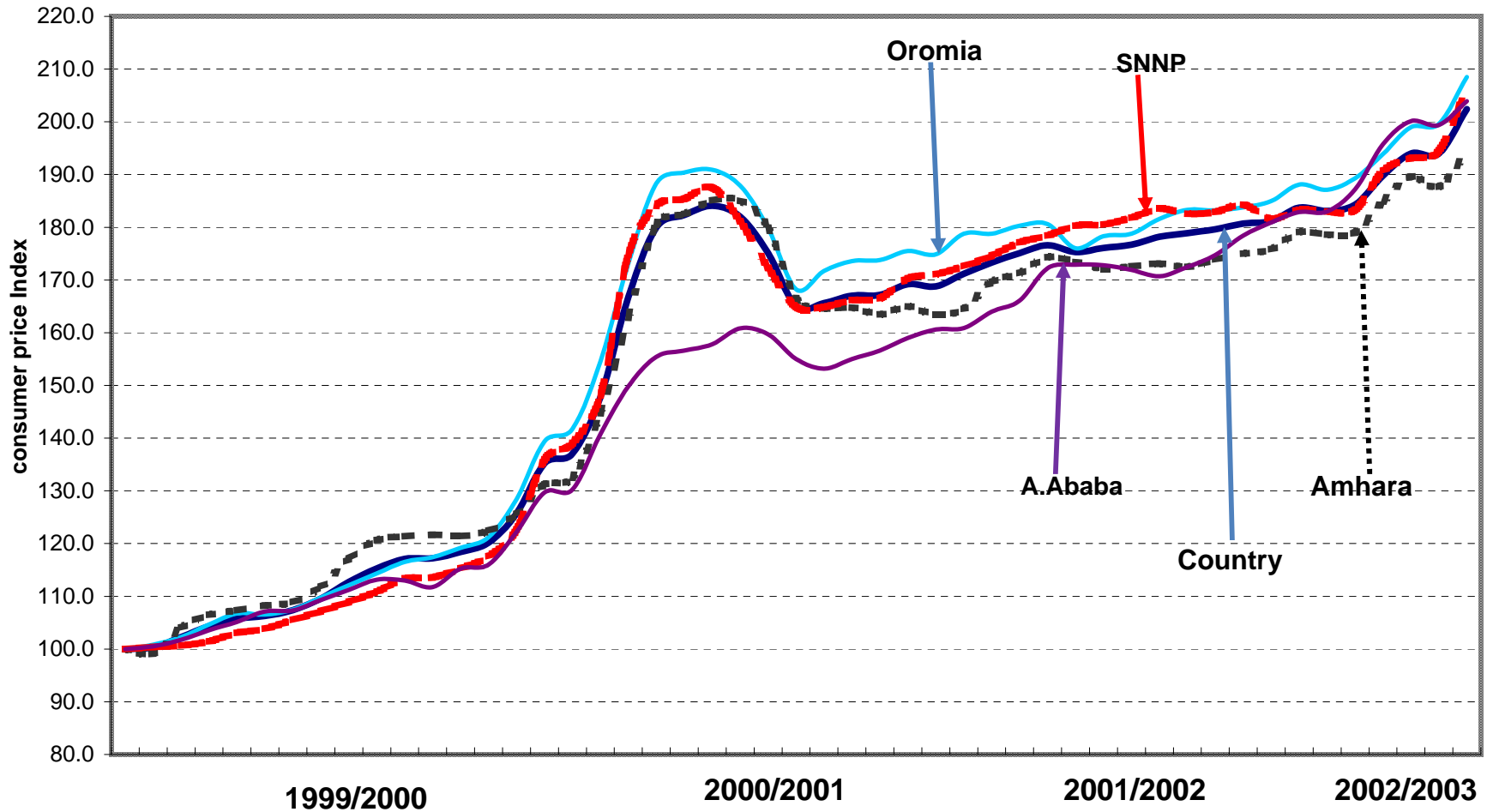
2007/2008

2008/2009

2009/2010

2010/2011

D J F M A M J J A S O N D J F M A M J J A S O N D J F M A M J J A S O N D



የሽማግሌ ዋጋ መመዘኛ ኢንዱክስ

General CPI for Country Level and Major Regions

የሽማግሌት ዋጋ ኢንዱክስ ለአገር አቀፍና ለዋና ዋና ክልሎች

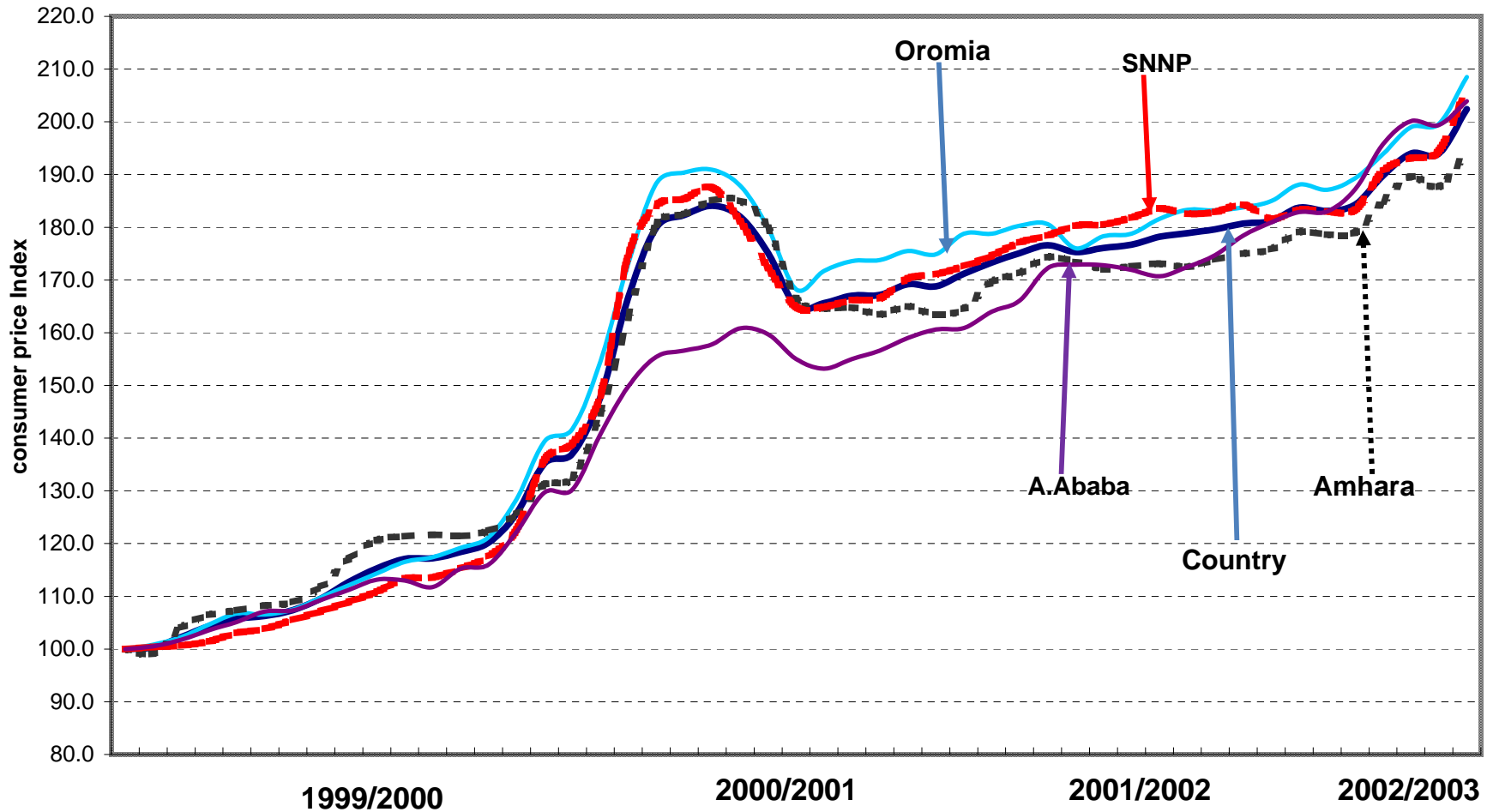
2007/2008

2008/2009

2009/2010

2010/2011

D J F M A M J J A S O N D J F M A M J J A S O N D J F M A M J J A S O N D



የሽማግሌት ዋጋ መመዘኛ ኢንዱክስ

ሠንጠረዥ 1ሀ:- ጠቅላላ የ ሽግግሮች ዋጋ መመዘኛ ኢንዱስትሪ ቢሥሩ የተሳተፉ ክፍሎች በአገር አቀፍ ደረጃ

ታህሳስ 1999 = 100

Table 1a: General Consumer Price Index and Its Components at Country Level

December 2006 = 100

ወርና ዓመት	ጠቅላላ ኢንዱስትሪ	ጠቅላላ የምግብ ኢንዱስትሪ	ጠቅላላ የምግብ ክፍል	Non-food Consumer Price Index Components										Month and Year
				መጠጥ	ቤሽራና ትምባሆ	ልብስና መጫጫያ	የቤት ኪራይ፣ ስቃዎች+ውሃ፣ ነጻጅናሃይል	የቤት ስቃዎች የቤት ግዝጊያዎች የቤት ቁሳቁስና የቤት ሠራተኞች ደመወዝ	ሕክምና	ትራንስፖርትና መገናኛ	መዝናኛና ትምህርት	የግል ንጽባናና የግል ጽግረት ስቃዎች	ሌሎች ስቃዎች	
General Index	Food Total	Non-Food Total	Beverages	Cigarettes and Tobacco	Clothing and Footwear	House Rent, Construction Materials, Water, and Fuel and Power	Furniture, Furnishings, Household Equipment and Operation	Medical Care and Health	Transport and Communication	Recreation, Entertainment and Education	Personal Care and Effects	Miscellaneous Goods		
ታህሳስ 1999	100.0	100.0	100.0	100.0	100.0	100.0	100.0	100.0	100.0	100.0	100.0	100.0	100.0	December 2006
ሐምሌ 1999 - ሰኔ 2000	126.9	137.2	113.3	113.5	107.8	117.0	112.0	125.5	111.9	105.3	106.9	112.6	104.7	July 2007 - June 2008
ሐምሌ 2000 - ሰኔ 2001	173.1	198.0	140.1	175.8	141.2	149.8	136.6	159.8	128.2	112.8	124.9	142.2	115.5	July 2008 - June 2009
ሐምሌ 2001 - ሰኔ 2002	177.9	187.2	165.6	187.1	169.4	188.5	159.1	190.9	149.2	134.9	144.6	181.8	126.4	July 2009 - June 2010
2002														2009/2010
ታህሳስ 2002	176.7	185.5	165.0	186.2	160.9	184.6	160.0	189.2	147.8	136.9	144.3	182.9	124.9	December "
ጥር 2002	178.2	186.0	167.9	187.7	165.7	191.3	161.7	192.4	151.4	138.5	145.9	186.0	126.7	January 2010
የካቲት 2002	178.9	185.7	169.8	186.1	172.0	196.1	162.9	196.3	153.0	138.0	145.1	189.3	126.8	February "
መጋቢት 2002	179.6	185.6	171.7	186.5	181.7	198.4	164.5	199.9	155.9	137.7	147.8	190.3	128.4	March "
ሚያዝያ 2002	180.7	186.2	173.3	189.0	186.1	199.3	166.1	201.8	157.1	142.2	149.0	191.1	127.8	April "
ግንቦት 2002	181.2	185.7	175.3	190.5	183.2	204.1	166.9	204.1	158.4	145.3	150.5	193.0	130.4	May "
ሰኔ 2002	183.7	188.6	177.3	195.8	185.1	205.8	169.6	207.1	158.5	142.4	152.2	195.2	129.5	June "
2003														2010/2011
ሐምሌ 2002	183.1	186.8	178.3	194.4	182.8	207.6	170.8	207.8	158.2	142.8	152.4	197.2	130.2	July 2010
ኔሐሴ 2002	184.3	188.4	178.9	196.6	182.4	210.5	169.8	211.2	157.5	143.8	155.9	199.2	129.6	August "
መስከረም 2003	189.9	193.2	185.5	196.5	191.5	219.6	177.7	216.0	158.6	144.6	165.3	206.4	130.7	September "
ጥቅምት 2003	194.0	197.1	189.8	198.9	215.0	224.0	180.1	224.7	162.9	152.4	179.7	216.4	133.5	October "
ኅዳር 2003	194.1	196.7	190.7	198.7	221.7	227.3	177.8	229.0	166.1	157.9	183.6	228.9	136.4	November "
ታህሳስ 2003	202.4	202.1	202.7	202.2	224.9	239.0	195.7	234.8	168.1	163.8	181.8	235.3	136.5	December "
	14.5	8.9	22.9	8.6	39.8	29.5	22.3	24.1	13.7	19.7	26.0	28.6	9.3	

ወጪዎች 20:- ጠቅላላ የ ሽግግር ዋጋ መመዘኛ ኢንዱስትሪ ስላገር አቀፍ እና በክልሎች ደረጃ

ታህሳስ 1999 = 100

Table 2a: Summary of General Consumer Price Indices at Country and Regional Levels

December 2006=100

ወር ዓመት	Reporting Level												Month and Year
	Eth.	A.A.	Afar	Amhara	B.Gumuz	D.Dawa	Gambela	Harari	Oromia	SNNP	Somalia	Tigray	
ታህሳስ 1999	100.0	100.0	100.0	100.0	100.0	100.0	100.0	100.0	100.0	100.0	100.0	100.0	December 2006
ሐምሌ 1999 - ሰኔ 2000	126.9	121.8	124.3	127.8	137.7	125.6	123.7	119.1	129.0	125.6	118.5	130.1	July 2007 - June 2008
ሐምሌ 2000 - ሰኔ 2001	173.1	157.6	158.3	172.1	193.9	167.6	193.2	169.5	179.5	173.9	170.8	183.0	July 2008 - June 2009
ሐምሌ 2001 - ሰኔ 2002	177.9	173.4	178.5	173.6	188.3	176.5	187.0	181.1	181.5	180.9	184.9	184.8	July 2009 - June 2010
2002													2009/2010
ታህሳስ 2002	176.7	171.9	180.1	172.6	192.8	173.7	182.1	179.8	178.8	181.8	183.0	183.8	December "
ጥር 2002	178.2	170.7	180.6	173.1	185.6	176.4	183.6	181.8	181.8	183.5	185.0	182.9	January 2010
ፍቅሪት 2002	178.9	172.5	183.2	172.5	182.6	176.2	183.7	182.3	183.3	182.6	191.0	182.8	February "
መጋቢት 2002	179.6	174.8	182.1	173.9	177.0	178.9	181.5	186.5	183.2	182.9	188.7	185.8	March "
ዲያር 2002	180.7	178.4	186.7	175.0	179.5	179.3	181.1	185.3	183.8	184.3	187.6	187.6	April "
ግንቦት 2002	181.2	180.9	186.9	175.8	179.5	180.1	184.9	187.7	185.0	181.6	187.9	190.2	May "
ሰኔ 2002	183.7	182.9	185.9	179.1	183.3	183.0	185.3	186.8	188.1	183.3	191.7	190.4	June "
2003													2010/2011
ሐምሌ 2002	183.1	183.0	187.8	178.6	177.3	180.5	185.9	187.7	187.1	183.0	186.7	189.7	July 2010
ኔሐሴ 2002	184.3	187.2	188.9	179.0	178.8	181.2	185.5	190.6	189.3	183.3	191.1	188.9	August "
መስከረም 2003	189.9	195.8	198.9	184.9	180.9	188.4	191.2	199.9	193.9	190.7	198.5	191.2	September "
ጥቅምት 2003	194.0	200.1	201.4	189.6	187.1	194.9	195.0	202.3	199.0	193.1	207.4	194.2	October "
ኅዳር 2002	194.1	199.4	203.7	187.7	188.8	193.4	196.3	207.0	199.6	194.5	217.8	193.7	November "
ታህሳስ 2003	202.4	203.9	205.8	194.3	193.5	199.7	203.8	210.2	208.5	206.4	224.5	192.0	December "
	14.5	18.6	14.3	12.5	0.4	14.9	11.9	16.9	16.6	13.6	22.7	4.5	

ሠንጠረዥ 3 ሀ:- ጠቅላላ የሽግግር ዋጋ መመዘኛ ኢንዱክስ በሥነ- የተከተቱ ክፍሎች ለአዲስ አበባ ከተማ መስተዳድር

ታህሳስ 1999 = 100

Table 3a: General Consumer Price Index and Its Components for Addis Ababa City Administration

December 2006 = 100

ወርና ዓመት	ጠቅላላ ኢንዱክስ	ጠቅላላ የግብር ኢንዱክስ	ጠቅላላ የግብር ኢንዱክስ	Non-food Consumer Price Index Components											Month and Year
				መጠጥ	ሲጃራና ትምባሆ	ላብስና መጫሊያ	የቤት ኪራይ፣ የቤት መሥሪያ ስቃዎች+ውሃ፣ ነጻጅናጥይል	የቤት ስቃዎች የቤት ግንቢያዎች የቤት ቁሳቁስና የቤት ሠራተኛ ደመወዝ	ሕክምና	ትራንስፖርትና መገናኛ	መዝናኛና ትምህርት	የግል ንጽባናና የግል ቋሚ ስቃዎች	ሌሎች ስቃዎች		
ታህሳስ 1999	100.0	100.0	100.0	100.0	100.0	100.0	100.0	100.0	100.0	100.0	100.0	100.0	100.0	100.0	December 2006
ሐምሌ 1999 - ሰኔ 2000	121.8	134.8	112.8	127.4	108.7	127.9	106.2	132.3	124.3	102.3	104.4	118.6	104.7	104.7	July 2007 - June 2008
ሐምሌ 2000 - ሰኔ 2001	157.6	190.7	134.5	177.8	156.8	164.4	120.6	165.7	146.0	114.9	121.7	146.6	124.8	124.8	July 2008 - June 2009
ሐምሌ 2001 - ሰኔ 2002	173.4	198.5	155.9	195.4	176.2	192.3	133.3	192.2	159.8	146.8	137.0	176.5	156.5	156.5	July 2009 - June 2010
2002															2009/2010
ታህሳስ 2002	171.9	196.8	154.7	190.1	171.9	187.4	132.6	192.9	156.7	149.4	130.1	177.3	157.2	157.2	December "
ጥር 2002	170.7	191.1	156.6	189.8	172.9	191.4	133.2	193.4	160.2	150.4	136.6	181.4	162.6	162.6	January 2010
የካቲት 2002	172.5	194.3	157.4	192.2	179.2	194.8	133.6	197.3	158.6	148.1	139.1	181.4	158.0	158.0	February "
መጋቢት 2002	174.8	197.8	158.9	197.6	181.4	198.3	135.7	199.4	159.9	146.5	138.1	185.1	159.6	159.6	March "
ሚያዝያ 2002	178.4	201.2	162.6	199.5	185.3	200.6	138.7	200.5	162.4	156.0	142.2	186.3	157.5	157.5	April "
ግንቦት 2002	180.9	203.2	165.4	204.1	184.8	201.1	140.1	208.5	161.3	161.6	140.6	190.2	163.4	163.4	May "
ሰኔ 2002	182.9	209.5	164.5	214.5	186.8	204.4	137.7	210.1	164.2	155.8	141.6	190.9	158.0	158.0	June "
2003															2010/2011
ሐምሌ 2002	183.0	207.3	166.1	217.2	187.7	212.5	137.9	210.2	169.6	156.4	141.8	192.8	157.1	157.1	July 2010
ኔሐሴ 2002	187.2	215.5	167.6	216.3	188.6	217.1	138.4	213.1	168.2	156.1	145.1	193.8	163.7	163.7	August "
መስከረም 2003	195.8	226.6	174.4	218.1	197.7	234.8	142.7	220.2	162.6	158.2	159.4	199.5	169.8	169.8	September "
ጥቅምት 2003	200.1	226.9	181.4	220.2	227.7	241.5	147.8	230.1	169.9	168.6	165.8	208.8	170.6	170.6	October "
ገዳር 2003	199.4	219.9	185.3	220.4	229.4	246.6	150.9	229.0	175.2	174.1	174.8	215.6	171.7	171.7	November "
ታህሳስ 2003	203.9	220.2	192.7	232.4	248.0	254.6	162.2	235.4	168.9	180.5	172.3	220.5	176.4	176.4	December "

ታህሳስ 1999 = 100

Table 4a: General Consumer Price Index and Its Components for the Afar Regional State

December 2006 = 100

ወርና ዓመት	ጠቅላላ ኢንዱክስ	ጠቅላላ የግብ ኢንዱክስ	ጠቅላላ የግብ ክፍል ኢንዱክስ	Non-food Consumer Price Index Components											Month and Year
				መጠጥ	ሲጃራና ትምባሆ	ልብስና መጫሊያ	የቤት ኪራይና የቤት መሥሪያ ስቃዎች+ውሃና ነጻጅናገደል	የቤት ስቃዎች የቤት ግንባራዎች የቤት ቁሳቁስና የቤት ሠራተኞች ደመወዝ	ሕክምና	ትራንስፖርትና መገናኛ	መገናኛና ትምህርት	የግል ገንባታና የግል ቋጫ ስቃዎች	ሌሎች ስቃዎች		
General Index	Food Total	Non-Food Total	Beverages	Cigarettes and Tobacco	Clothing and Footwear	House Rent, Construction Materials, Water, and Fuel and Power	Furniture, Furnishings, Household Equipment and Operation	Medical Care and Health	Transport and Communication	Recreation, Entertainment and Education	Personal Care and Effects	Miscellaneous Goods			
ታህሳስ 1999	100.0	100.0	100.0	100.0	100.0	100.0	100.0	100.0	100.0	100.0	100.0	100.0	100.0	December 2006	
ሐምሌ 1999 - ሰኔ 2000	124.3	136.1	110.2	109.2	102.5	114.5	107.3	113.8	100.6	124.4	92.2	107.2	101.5	July 2007 - June 2008	
ሐምሌ 2000 - ሰኔ 2001	158.3	189.5	121.3	136.1	131.5	130.8	110.0	143.4	109.7	112.6	107.8	122.5	106.9	July 2008 - June 2009	
ሐምሌ 2001 - ሰኔ 2002	178.5	203.8	148.4	162.8	141.3	151.3	144.9	177.8	127.0	132.5	112.1	131.8	112.1	July 2009 - June 2010	
2002														2009/2010	
ታህሳስ 2002	180.1	207.1	148.0	162.9	133.5	155.3	138.7	186.0	127.8	133.5	112.0	132.3	109.9	December "	
ጥር 2002	180.6	205.1	151.6	163.5	136.8	153.2	147.8	187.7	127.8	138.0	107.6	129.1	111.9	January 2010	
የካቲት 2002	183.2	207.3	154.7	162.9	142.5	158.8	150.9	189.2	129.3	138.0	107.9	131.1	113.8	February "	
መጋቢት 2002	182.1	203.9	156.2	163.2	148.1	157.7	155.9	186.2	132.3	138.0	112.3	132.9	111.9	March "	
ሚያዝያ 2002	186.7	209.8	159.2	163.8	153.2	158.2	161.3	187.4	132.3	144.6	113.2	133.7	111.1	April "	
ግንቦት 2002	186.9	210.1	159.4	170.6	157.1	159.3	159.3	189.2	135.8	144.5	115.6	133.1	117.7	May "	
ሰኔ 2002	185.9	208.5	159.0	176.6	156.1	152.9	162.1	192.3	120.8	138.0	118.1	134.3	117.0	June "	
2003														2010/2011	
ሐምሌ 2002	187.8	209.6	161.8	182.3	152.5	156.8	165.5	194.3	116.2	138.0	120.4	135.1	116.2	July 2010	
ኔሐሴ 2002	188.9	211.8	161.8	182.3	146.3	157.0	168.2	188.0	120.7	138.0	120.6	132.2	113.0	August "	
መስከረም 2003	198.9	220.8	172.9	183.7	146.3	158.6	191.3	195.4	124.5	138.0	120.7	132.1	114.3	September "	
ጥቅምት 2003	201.4	222.3	176.5	183.7	182.4	168.3	190.3	194.1	122.6	153.0	133.1	139.4	116.6	October "	
ኅዳር 2003	203.7	223.9	179.6	182.1	192.4	174.6	188.9	205.1	122.6	153.0	138.9	143.7	118.0	November "	
ታህሳስ 2003	205.8	222.8	185.6	192.6	192.4	169.7	206.0	201.0	119.5	166.6	137.9	144.9	118.4	December "	

ሠንጠረዥ 60:- ጠቅላላ የ ሽግግር ዋጋ መመዘኛ ኢንዱስትሪ ቢሥሩ የተካተቱ ክፍሎች ለቤኔሽንጎል ንዳዥ ክልላዊ መንግሥት

ታህሳስ 1999 = 100

Table 6a: General Consumer Price Index and Its Components for the Benishangul Gumuz Regional State

December 2006 = 100

ወርና ዓመት	ጠቅላላ ኢንዱስትሪ	ጠቅላላ የምግብ ኢንዱስትሪ	ጠቅላላ የምግብ ነፃ የልሆኑ ኢንዱስትሪ	Non-food Consumer Price Index Components										Month and Year	
				መጠጥ	ሲጃራና ትምባሆ	ልብስና መጓጊያ	የቤት ኪራይ፣ የቤት መሥሪያ ስቃዎች+ውሃ፣ ነጻጅና ሃይል	የቤት ስቃዎች የቤት ግንቢያዎች የቤት ቁሳቁስና የቤት ሠራተኞች ደመወዝ	ሕክምና	ትራንስፖርት መገናኛ	መዝናኛና ትምህርት	የግል ንጽባና ስቃዎች	ሌሎች ስቃዎች		
ታህሳስ 1999	100.0	100.0	100.0	100.0	100.0	100.0	100.0	100.0	100.0	100.0	100.0	100.0	100.0	100.0	December 2006
ሐምሌ 1999 - ሰኔ 2000	137.7	148.2	123.7	111.2	113.2	123.8	141.3	114.6	111.0	101.0	112.2	115.2	103.3	103.3	July 2007 - June 2008
ሐምሌ 2000 - ሰኔ 2001	193.9	226.1	151.4	150.0	148.3	156.2	159.4	158.1	143.4	100.7	158.5	146.5	112.4	112.4	July 2008 - June 2009
ሐምሌ 2001 - ሰኔ 2002	188.3	199.8	173.2	156.9	181.5	192.1	176.3	194.9	153.9	114.0	171.8	179.9	113.1	113.1	July 2009 - June 2010
2002															2009/2010
ታህሳስ 2002	192.8	205.8	175.6	154.1	166.2	194.1	182.7	196.4	153.9	115.1	171.9	179.1	113.0	113.0	December "
ጥር 2002	185.6	192.7	176.0	153.7	167.4	205.4	177.1	196.8	157.5	117.6	173.1	184.1	112.9	112.9	January 2010
የካቲት 2002	182.6	187.5	176.0	154.3	189.3	209.6	171.3	201.4	159.2	117.6	172.4	187.5	117.1	117.1	February "
መጋቢት 2002	177.0	178.7	174.8	158.1	200.7	201.0	171.0	199.7	159.7	117.6	175.8	183.9	118.8	118.8	March "
ሚያዝያ 2002	179.5	181.5	177.0	160.8	207.1	205.0	174.2	199.5	160.2	121.0	173.2	187.8	112.1	112.1	April "
ግንቦት 2002	179.5	179.1	180.0	162.3	213.6	216.6	173.6	205.1	156.3	121.0	172.8	198.5	109.7	109.7	May "
ሰኔ 2002	183.3	180.7	186.8	164.2	211.0	215.7	190.7	209.8	147.3	119.0	183.6	197.1	110.9	110.9	June "
2003															2010/2011
ሐምሌ 2002	177.3	175.8	179.3	167.0	202.1	223.4	165.1	211.8	143.6	119.0	177.2	198.6	112.1	112.1	July 2010
ኔሐሴ 2002	178.8	174.1	185.1	167.6	206.2	236.9	170.5	219.9	151.9	119.0	179.3	195.9	110.7	110.7	August "
መስከረም 2003	180.9	172.1	192.5	166.1	208.8	242.0	179.3	238.2	160.4	119.0	190.1	195.7	111.0	111.0	September "
ጥቅምት 2003	187.1	177.8	199.5	165.5	238.1	253.4	187.6	240.7	160.9	123.2	193.4	226.6	111.0	111.0	October "
ኅዳር 2003	188.8	179.6	200.9	164.0	238.1	261.3	178.6	256.1	166.6	127.5	196.5	235.0	112.3	112.3	November "
ታህሳስ 2003	193.5	180.5	210.7	169.3	238.1	290.8	184.9	269.3	149.5	130.5	199.6	241.0	114.7	114.7	December "

ሠገጠረዥ ገሀ:- ጠቅላላ የ ሽግግር ዋጋ መመዘኛ ኢንዱስትሪ ቢሥሩ የተሳተፉ ክፍሎች ለድረገጽ ለስተዳደር ካውንስል

ታህሳስ 1999 = 100

Table 7a: General Consumer Price Index and Its Components for the Dire Dawa Administrative Council

December 2006 = 100

ወርና ዓመት	ጠቅላላ ኢንዱስትሪ	ጠቅላላ ምግብ ኢንዱስትሪ	ጠቅላላ ምግብ ክፍል ስፍራ	Non-food Consumer Price Index Components										Month and Year	
				መጠጥ	ቢሽራና ትምባሆ	ላብስና መጫጫያ	የቤት ኪራይና የቤት መሥሪያ ስቃዎች+ውሃና ነጻጅናጥይል	የቤት ስቃዎች የቤት ግንባታዎች የቤት ቁሳቁስና የቤት ሠራተኞች ደመወዝ	ሕክምና	ትራንስፖርትና መገናኛ	መዝናኛና ትምህርት	የግል ገንዘብና የግል ቋጫ ስቃዎች	ሌሎች ስቃዎች		
ታህሳስ 1999	100.0	100.0	100.0	100.0	100.0	100.0	100.0	100.0	100.0	100.0	100.0	100.0	100.0	100.0	December 2006
ሐምሌ 1999 - ሰኔ 2000	125.6	135.4	115.6	113.2	101.2	109.2	120.9	124.5	115.8	105.5	116.8	108.2	102.9	102.9	July 2007 - June 2008
ሐምሌ 2000 - ሰኔ 2001	167.6	199.5	134.7	158.5	113.0	128.2	140.9	157.9	138.8	102.3	136.1	119.5	107.6	107.6	July 2008 - June 2009
ሐምሌ 2001 - ሰኔ 2002	176.5	201.2	151.0	168.6	142.1	145.6	153.6	189.1	149.4	106.6	154.7	133.5	120.8	120.8	July 2009 - June 2010
2002															2009/2010
ታህሳስ 2002	173.7	195.3	151.5	168.1	149.6	149.0	153.7	183.8	150.8	107.7	160.9	131.3	119.8	119.8	December "
ጥር 2002	176.4	199.2	153.0	166.5	138.7	149.0	153.5	195.7	149.1	108.0	157.3	134.1	119.8	119.8	January 2010
የካቲት 2002	176.2	198.3	153.4	168.1	138.7	148.6	153.4	196.4	155.2	108.0	158.5	136.5	122.9	122.9	February "
መጋቢት 2002	178.9	203.6	153.5	168.9	142.6	148.9	154.6	192.3	154.8	108.1	161.1	136.1	122.9	122.9	March "
ሚያዝያ 2002	179.3	202.4	155.5	168.3	142.6	148.8	156.5	199.9	153.1	108.9	161.0	139.6	125.0	125.0	April "
ግንቦት 2002	180.1	203.8	155.8	176.7	170.4	148.4	157.1	201.4	148.8	108.9	158.4	137.2	127.1	127.1	May "
ሰኔ 2002	183.0	208.6	156.5	176.2	170.4	144.8	156.2	212.0	149.6	108.3	161.0	137.3	127.1	127.1	June "
2003															2010/2011
ሐምሌ 2002	180.5	204.7	155.6	175.7	185.9	148.2	156.2	203.9	152.1	108.3	149.8	140.9	127.1	127.1	July 2010
ኔሐሴ 2002	181.2	203.4	158.4	175.2	201.4	149.2	158.1	212.9	163.1	108.3	150.0	142.1	127.1	127.1	August "
መስከረም 2003	188.4	206.6	169.7	181.6	161.4	159.6	174.4	236.3	156.6	110.7	156.1	143.9	127.1	127.1	September "
ጥቅምት 2003	194.9	217.3	171.9	182.9	161.4	160.6	175.0	235.4	158.4	120.6	165.3	143.5	127.1	127.1	October "
ኅዳር 2003	193.4	211.5	174.9	178.8	212.3	163.9	177.1	239.1	150.9	122.0	172.2	146.7	127.1	127.1	November "
ታህሳስ 2003	199.7	219.6	179.1	220.1	196.0	162.6	189.6	228.5	164.6	122.6	185.5	146.8	127.1	127.1	December "

ሠንጠረዥ 80:- ጠቅላላ የ ሽያጭ ዋጋ መመዘኛ ኢንዱክሽን ቢሥሩ የተሳተፉ ክፍሎች ለጋምቤላ ሕዝቦች ክልል መገገሥት

ታህሳስ 1999 = 100

Table 8a: General Consumer Price Index and Its Components for the Gambela Peoples Regional State

December 2006 = 100

ወርና ዓመት	ጠቅላላ ኢንዱክሽን	ጠቅላላ ምግብ ኢንዱክሽን	ጠቅላላ ምግብ ክፍል ያልሆኑ ኢንዱክሽን	Non-food Consumer Price Index Components										Month and Year	
				መጠጥ	ሲጃራና ትምባሆ	ላብስና መጫጫ	የቤት ኪራይ፣ የቤት መሥሪያ ስቃዎች+ውሃ፣ ነጻጅናጥይል	የቤት ስቃዎች የቤት ግንቢያዎች የቤት ቁሳቁስና የቤት ሠራተኞች ደመወዝ	ሕክምና	ትራንስፖርትና መገናኛ	መገናኛና ትምህርት	የግል ንጽባናና የግል ቋሚ ስቃዎች	ሌሎች ስቃዎች		
ታህሳስ 1999	100.0	100.0	100.0	100.0	100.0	100.0	100.0	100.0	100.0	100.0	100.0	100.0	100.0	0.0	December 2006
ሐምሌ 1999 - ሰኔ 2000	123.7	133.8	111.2	120.8	107.8	108.3	107.6	123.5	116.4	105.9	108.4	103.5	0.0	July 2007 - June 2008	
ሐምሌ 2000 - ሰኔ 2001	193.2	226.8	151.5	193.5	134.2	140.8	145.5	173.5	130.6	112.4	138.6	114.1	0.0	July 2008 - June 2009	
ሐምሌ 2001 - ሰኔ 2002	187.0	205.5	164.0	204.0	163.9	145.7	156.9	182.5	155.0	131.7	172.0	120.3	0.0	July 2009 - June 2010	
2002															2009/2010
ታህሳስ 2002	182.1	200.8	158.9	208.1	152.3	146.1	146.0	177.4	156.6	140.1	162.4	121.5	0.0	December "	
ጥር 2002	183.6	201.6	161.3	206.4	152.3	147.4	150.3	185.6	156.0	140.1	160.8	123.3	0.0	January 2010	
የካቲት 2002	183.7	199.5	164.2	206.3	161.9	149.0	153.3	189.3	157.5	140.1	171.7	118.7	0.0	February "	
መጋቢት 2002	181.5	189.9	170.9	206.4	183.6	147.1	164.4	188.7	157.4	140.1	192.2	121.1	0.0	March "	
ሚያዝያ 2002	181.1	188.7	171.8	206.4	185.5	145.8	166.0	192.6	159.0	141.4	189.0	121.4	0.0	April "	
ግንቦት 2002	184.9	194.4	173.1	211.3	186.1	146.9	167.4	191.9	161.1	141.4	181.4	121.9	0.0	May "	
ሰኔ 2002	185.3	196.1	172.0	199.8	183.6	147.4	167.1	196.9	165.4	141.4	198.6	123.6	0.0	June "	
2003															2010/2011
ሐምሌ 2002	185.9	197.1	172.0	199.9	173.0	147.7	167.8	201.3	162.5	141.4	212.2	122.9	0.0	July 2010	
ኔሐሴ 2002	185.5	195.1	173.6	201.9	173.0	154.5	167.1	205.4	163.7	141.8	210.2	121.9	0.0	August "	
መስከረም 2003	191.2	201.6	178.1	200.8	180.8	157.4	174.1	209.7	162.8	146.7	215.3	122.6	0.0	September "	
ጥቅምት 2003	195.0	205.3	182.2	204.0	183.6	161.4	178.4	215.1	168.6	146.7	225.3	125.8	0.0	October "	
ገዳር 2003	196.3	205.7	184.6	202.3	193.2	166.5	180.8	214.4	169.5	146.7	225.4	126.4	0.0	November "	
ታህሳስ 2003	203.8	215.2	189.5	205.7	213.3	173.5	180.8	222.2	176.1	146.7	234.2	129.1	0.0	December "	

ታህሳስ 1999 = 100

Table 9a: General Consumer Price Index and Its Components for the Harari People Regional State

December 2006 = 100

ወርና ዓመት	ጠቅላላ ኢንዱክሽን	ጠቅላላ የምግብ ኢንዱክሽን	ጠቅላላ የምግብ ክፍል ስፋት	Non-food Consumer Price Index Components											Month and Year
				መጠጥ	ቢሻራና ትምባሆ	ልብና መጫጫያ	የቤት ኪራይ፣ የቤት መሥሪያ ስቃዎች+ውሃ፣ ነጻጅናሃይል	የቤት ስቃዎች የቤት ማህንዊያዎች የቤት ቁሳቁስና የቤት ሠራተኞች ደመወዝ	እኩምና	ትራንስፖርትና መገናኛ	መዝናኛና ትምህርት	የግል ንጽባናና የግል ጳጊ ስቃዎች	ሌሎች ስቃዎች		
General Index	Food Total	Non-Food Total	Beverages	Cigarettes and Tobacco	Clothing and Footwear	House Rent, Construction Materials, Water, and Fuel and Power	Furniture, Furnishings, Household Equipment and Operation	Medical Care and Health	Transport and Communication	Recreation, Entertainment and Education	Personal Care and Effects	Miscellaneous Goods			
ታህሳስ 1999	100.0	100.0	100.0	100.0	100.0	100.0	100.0	100.0	100.0	100.0	100.0	100.0	100.0	100.0	December 2006
ሐምሌ 1999 - ሰኔ 2000	119.1	130.4	108.5	107.9	106.4	111.0	108.8	109.1	99.7	108.8	102.4	117.1	100.7	100.7	July 2007 - June 2008
ሐምሌ 2000 - ሰኔ 2001	169.5	205.1	136.3	159.6	164.8	149.9	131.1	135.0	104.8	124.8	117.7	137.6	118.3	118.3	July 2008 - June 2009
ሐምሌ 2001 - ሰኔ 2002	181.1	210.2	153.9	168.4	219.8	172.8	137.6	162.0	239.5	128.8	141.9	149.3	120.7	120.7	July 2009 - June 2010
2002															2009/2010
ኅዳር 2002	175.6	200.1	152.8	167.5	225.9	171.8	134.0	160.8	250.2	132.9	140.3	148.9	120.2	120.2	November "
ታህሳስ 2002	179.8	209.0	152.6	168.8	223.6	177.2	128.1	166.7	253.6	127.4	143.1	150.0	120.2	120.2	December "
ጥር 2002	181.8	210.6	154.8	168.8	223.6	175.4	135.8	167.3	254.7	127.9	140.4	148.5	125.7	125.7	January 2010
የካቲት 2002	182.3	212.2	154.5	168.8	215.9	174.0	137.2	165.8	253.2	127.9	141.5	151.2	121.7	121.7	February "
መጋቢት 2002	186.5	218.1	157.0	168.8	234.1	176.9	140.2	166.0	250.6	127.9	144.5	150.4	120.7	120.7	March "
ሚያዝያ 2002	185.3	213.5	159.0	168.8	220.2	178.2	145.0	167.1	253.4	128.3	149.6	150.8	120.2	120.2	April "
ግንቦት 2002	187.7	218.1	159.4	168.8	225.8	179.1	144.6	168.3	249.1	128.3	149.9	150.3	119.7	119.7	May "
ሰኔ 2002	186.8	216.8	158.9	174.1	219.3	177.6	142.7	167.5	253.4	128.1	154.5	151.9	120.8	120.8	June "
2003															2010/2011
ሐምሌ 2002	187.7	217.3	160.1	173.7	230.6	180.8	143.8	166.8	254.8	128.1	153.1	151.2	121.1	121.1	July 2010
ኔሐሴ 2002	190.6	222.0	161.4	173.7	231.5	182.2	145.7	168.9	254.4	128.1	153.2	153.7	121.3	121.3	August "
መስከረም 2003	199.9	233.9	168.2	175.3	250.0	189.6	154.6	173.2	257.0	128.1	162.7	153.7	122.3	122.3	September "
ጥቅምት 2003	202.3	235.0	171.9	175.3	258.5	197.6	156.6	176.8	262.9	133.5	160.1	161.2	121.6	121.6	October "
ኅዳር 2003	207.0	242.0	174.3	178.2	275.6	196.4	156.8	176.9	260.9	146.0	167.5	164.9	124.3	124.3	November "
ታህሳስ 2003	210.2	241.1	181.3	190.5	250.4	202.8	171.4	183.7	264.7	146.7	169.4	168.1	124.4	124.4	December "

ሠንጠረዥ 100:- ጠቅላላ የ ሽግግር ዋጋ መመዘኛ ኢንዱስትሪ ቢሮ የተሳተፉ ክፍሎች ለአረቢያ ክልል መገንጠያ

ታህሳስ 1999 = 100

Table 10a: General Consumer Price Index and Its Components for the Oromiya Regional State

December 2006 = 100

ወርና ዓመት	ጠቅላላ ኢንዱስትሪ	ጠቅላላ የግብር ኢንዱስትሪ	ጠቅላላ የግብር ያልሆኑ ኢንዱስትሪ	Non-food Consumer Price Index Components										Month and Year
				መጠጥ	ቢዳራና ትምህርት	ላብስና መጫጫ	የቤት ኪራይና ስቃይት ስራዎች	የቤት ስቃይት ስራዎች	ሕክምና	ትራንስፖርትና መገናኛ	መዝናኛና ትምህርት	የግል ንጽባና	ሌሎች ስቃይት	
	General Index	Food Total	Non-Food Total	Beverages	Cigarettes and Tobacco	Clothing and Footwear	House Rent, Construction Materials, Water, and Fuel and Power	Furniture, Furnishings, Household Equipment and Operation	Medical Care and Health	Transport and Communication	Recreation, Entertainment and Education	Personal Care and Effects	Miscellaneous Goods	
ታህሳስ 1999	100.0	100.0	100.0	100.0	100.0	100.0	100.0	100.0	100.0	100.0	100.0	100.0	100.0	December 2006
ሐምሌ 1999 - ሰኔ 2000	129.0	138.7	115.0	116.5	108.2	118.7	113.6	123.7	108.9	103.3	107.2	113.4	103.2	July 2007 - June 2008
ሐምሌ 2000 - ሰኔ 2001	179.5	202.0	146.9	182.8	143.8	152.0	142.4	155.0	134.0	106.4	126.3	149.2	118.7	July 2008 - June 2009
ሐምሌ 2001 - ሰኔ 2002	181.5	187.8	172.4	191.7	171.3	192.7	164.4	185.2	155.5	124.3	147.5	182.4	133.1	July 2009 - June 2010
2002														2009/2010
ታህሳስ 2002	178.8	184.4	170.7	191.9	162.4	186.9	164.4	183.6	152.2	125.1	149.1	182.7	127.0	December "
ጥር 2002	181.8	186.3	175.2	195.8	170.4	197.3	167.2	186.9	154.9	128.4	151.2	182.2	131.8	January 2010
የካቲት 2002	183.3	187.1	177.8	190.2	176.7	201.8	170.9	190.4	159.4	128.8	150.4	186.5	133.6	February "
መጋቢት 2002	183.2	186.6	178.3	188.3	182.9	203.1	169.1	194.7	164.5	129.6	153.9	189.3	135.7	March "
ሚያዝያ 2002	183.8	186.4	180.0	189.8	186.5	203.2	171.5	198.3	163.0	129.9	154.2	190.4	136.2	April "
ግንቦት 2002	185.0	186.9	182.2	190.0	182.8	208.5	173.2	199.5	164.2	132.8	157.4	190.8	141.4	May "
ሰኔ 2002	188.1	189.4	186.2	196.3	186.6	211.9	178.6	202.0	166.7	131.6	157.2	197.0	140.7	June "
2003														2010/2011
ሐምሌ 2002	187.1	187.1	187.2	193.4	186.4	212.9	180.8	202.3	165.8	132.0	157.3	199.8	142.7	July 2010
ኔሐሴ 2002	189.3	190.2	187.9	198.0	184.3	214.6	178.8	206.8	164.4	134.9	162.0	200.9	138.5	August "
መስከረም 2003	193.9	195.0	192.4	198.2	192.8	220.8	183.7	211.4	166.7	134.9	167.9	209.7	139.2	September "
ጥቅምት 2003	199.0	200.8	196.4	199.0	221.0	222.5	183.8	223.4	171.1	140.0	193.2	217.4	141.5	October "
ኅዳር 2003	199.6	200.8	197.9	201.0	229.3	223.2	180.3	232.0	174.2	146.0	199.3	234.7	144.6	November "
ታህሳስ 2003	208.5	206.7	211.1	203.7	231.2	242.7	202.2	231.2	178.7	153.2	193.4	240.0	149.8	December "

Table 11a: General Consumer Price Index and Its Components for the SNNP Regional State

December 2006= 100

ወርና ዓመት	ጠቅላላ ኢንዱስትሪ	ጠቅላላ የምግብ ኢንዱስትሪ	ጠቅላላ የምግብ ክፍል	Non-food Consumer Price Index Components											Month and Year	
				መጠጥ	ቢጃራና ትምባሆ	ላብስና መጫጫያ	የቤት ኪራይና የቤት መሥሪያ ስቃዎች+ውሃና ነጻጅናገዳል	የቤት ስቃዎች የቤት ግንባራዎች የቤት ቁሳቁስና የቤት ሠራተኞች ደመወዝ	ሕክምና	ትራንስፖርትና መገናኛ	መዝናኛና ትምህርት	የግል ገንቢና የግል ቋጫ ስቃዎች	ሌሎች ስቃዎች			
ታህሳስ 1999	100.0	100.0	100.0	100.0	100.0	100.0	100.0	100.0	100.0	100.0	100.0	100.0	100.0	100.0	100.0	December 2006
ሐምሌ 1999 - ሰኔ 2000	125.6	131.1	118.0	118.6	104.0	117.2	117.2	134.3	109.2	124.5	106.8	106.9	106.1	106.1	106.1	July 2007 - June 2008
ሐምሌ 2000 - ሰኔ 2001	173.9	189.3	152.7	178.0	133.9	155.9	150.4	175.6	119.3	136.1	122.7	128.3	114.2	114.2	114.2	July 2008 - June 2009
ሐምሌ 2001 - ሰኔ 2002	180.9	180.4	181.6	195.9	160.5	195.0	177.7	211.7	138.4	155.5	140.6	182.1	125.6	125.6	125.6	July 2009 - June 2010
2002																2009/2010
ታህሳስ 2002	181.8	182.2	181.3	195.0	146.5	192.0	179.3	207.3	138.4	156.9	142.2	188.4	125.2	125.2	125.2	December "
ጥር 2002	183.5	183.5	183.5	195.2	145.6	197.6	179.4	212.4	145.4	160.3	141.0	194.2	129.8	129.8	129.8	January 2010
የካቲት 2002	182.6	181.2	184.6	195.7	156.0	202.8	178.5	217.1	140.1	160.7	136.3	201.4	126.4	126.4	126.4	February "
መጋቢት 2002	182.9	177.9	189.8	196.6	185.6	205.2	187.2	222.6	141.7	160.7	138.3	202.5	126.4	126.4	126.4	March "
ሚያዝያ 2002	184.3	179.2	191.2	202.5	197.7	205.9	188.0	221.9	148.7	164.5	141.2	199.1	125.2	125.2	125.2	April "
ግንቦት 2002	181.6	174.0	191.9	204.4	184.3	206.8	188.0	223.8	150.7	164.5	141.5	205.0	126.4	126.4	126.4	May "
ሰኔ 2002	183.3	174.8	194.9	211.1	183.6	214.1	188.2	232.0	146.1	163.8	142.5	206.3	126.4	126.4	126.4	June "
2003																2010/2011
ሐምሌ 2002	183.0	173.9	195.4	207.1	164.8	216.5	189.0	233.7	148.2	163.8	144.5	206.2	126.4	126.4	126.4	July 2010
ኔሐሴ 2002	183.3	174.4	195.6	208.1	168.3	216.8	188.6	235.2	146.0	163.8	146.6	205.9	126.4	126.4	126.4	August "
መስከረም 2003	190.7	180.9	204.2	207.0	194.7	229.9	200.6	239.5	142.6	163.8	153.2	210.9	126.4	126.4	126.4	September "
ጥቅምት 2003	193.1	182.3	207.9	213.9	217.1	235.7	201.5	242.9	149.9	169.3	160.7	222.6	126.1	126.1	126.1	October "
ኅዳር 2003	194.5	184.2	208.7	210.1	212.2	240.3	201.2	242.6	153.0	174.3	158.2	235.2	125.6	125.6	125.6	November "
ታህሳስ 2003	206.4	197.4	218.8	214.0	225.0	241.2	217.5	260.1	159.7	177.8	159.7	247.3	126.4	126.4	126.4	December "

ሠንጠረዥ 12ሀ:-ጠቅላላ የ ሽግግሮች ዋጋ መመዘኛ ኢንዱስትሪ ቢሮ የተካተቱ ክፍሎች ለሰግሌ ክልላዊ መገንባት

ታህሳስ 1999 = 100

Table 12a: General Consumer Price Index and Its Components for the Somali Regional State

December 2006 = 100

ወርና ዓመት	ጠቅላላ ኢንዱስትሪ	ጠቅላላ የምግብ ኢንዱስትሪ	ጠቅላላ የምግብ ክፍል	Non-food Consumer Price Index Components										Month and Year
				የምግብ ክፍል	ቤጃና ትምብዋ	ልብና መጫዊያ	የቤት ኪራይና የቤት መሥሪያ ስቃዎች+ውሃ ነጻጅናሃይል	የቤት ስቃዎች የቤት ግብረጫዎች የቤት ቁሳቁስና የቤት ሠራተኛ ደመወዝ	ሕክምና	ትራንስፖርትና መገናኛ	መዝናኛና ትምህርት	የግል ጉዳይ ስቃዎች	ሌሎች ስቃዎች	
General Index	Food Total	Non-Food Total	Beverages	Cigarettes and Tobacco	Clothing and Footwear	House Rent, Construction Materials, Water, and Fuel and Power	Furniture, Furnishings, Household Equipment and Operation	Medical Care and Health	Transport and Communication	Recreation, Entertainment and Education	Personal Care and Effects	Miscellaneous Goods		
ታህሳስ 1999	100.0	100.0	100.0	100.0	100.0	100.0	100.0	100.0	100.0	100.0	100.0	100.0	100.0	December 2006
ሐምሌ 1999 - ሰኔ 2000	118.5	124.6	108.5	105.8	109.2	111.4	107.9	107.2	133.1	103.5	100.8	99.7	100.8	July 2007 - June 2008
ሐምሌ 2000 - ሰኔ 2001	170.8	195.9	129.8	134.2	123.1	129.1	128.4	149.6	144.5	115.8	107.8	118.5	131.3	July 2008 - June 2009
ሐምሌ 2001 - ሰኔ 2002	184.9	203.1	155.1	153.3	156.1	154.5	153.1	176.3	189.2	127.7	132.9	131.8	153.6	July 2009 - June 2010
2002														2009/2010
ታህሳስ 2002	183.0	199.8	155.7	150.2	156.1	158.5	151.7	175.6	201.0	130.0	132.3	132.2	157.8	December "
ጥር 2002	185.0	200.9	159.1	150.2	156.1	155.3	160.3	180.8	196.4	131.3	131.7	131.8	163.0	January 2010
የካቲት 2002	191.0	208.3	162.7	151.1	156.1	165.2	163.4	178.6	205.0	129.4	137.6	131.2	168.2	February "
መጋቢት 2002	188.7	204.7	162.7	158.1	156.1	161.0	161.3	185.9	220.8	134.1	137.2	135.5	168.2	March "
ጊዳር 2002	187.6	201.9	164.4	162.4	156.1	163.2	164.9	181.8	222.3	135.0	137.5	135.9	168.2	April "
ግንቦት 2002	187.9	201.8	165.1	174.1	156.1	161.8	167.5	181.9	212.2	135.0	136.7	135.1	168.2	May "
ሰኔ 2002	191.7	208.1	164.9	179.6	156.1	161.6	167.8	180.0	204.7	137.0	136.6	135.4	165.4	June "
2003														2010/2011
ሐምሌ 2002	186.7	198.6	167.2	181.5	156.1	161.2	171.9	183.5	214.9	137.0	136.3	134.8	165.4	July 2010
ክለሌ 2002	191.1	204.3	169.6	179.2	156.1	168.2	173.7	185.6	215.0	137.0	137.2	134.2	165.4	August "
መስከረም 2003	198.5	214.3	172.8	179.2	156.1	177.0	174.8	188.0	201.5	140.4	145.2	136.6	186.8	September "
ጥቅምት 2003	207.4	226.2	176.6	182.1	156.1	182.5	176.1	197.8	205.2	141.1	154.0	143.4	197.5	October "
ኅዳር 2003	217.8	240.3	181.0	183.3	156.1	179.8	186.0	199.5	218.5	143.7	162.8	140.5	207.6	November "
ታህሳስ 2003	224.5	249.4	183.9	203.6	156.1	190.8	182.9	200.9	226.5	146.5	174.0	148.4	209.6	December "

ሠንጠረዥ 130:- ጠቅላላ የ ሽግግር ዋጋ መመዘኛ ኢንዱስትሪ ቢሥሩ የተሳተፉ ክፍሎች ለትግራይ ክልል መገንጠያ
 ታህሳስ 1999 = 100

Table 13a: General Consumer Price Index and Its Components for the Tigray Regional State
 December 2006 = 100

ወርና ዓመት	ጠቅላላ ኢንዱስትሪ General Index	ጠቅላላ የምግብ ኢንዱስትሪ Food Total	ጠቅላላ የምግብ ክፍል ያልሆኑ ኢንዱስትሪ Non-Food Total	Non-food Consumer Price Index Components											Month and Year
				ምግብ ክፍል ያልሆኑ ክፍሎች Beverages	ቢጃራና ትምባሆ Cigarettes and Tobacco	ልዩነት መጫጫል Clothing and Footwear	የቤት ኪራይ፣ የቤት መሥሪያ ስቃዎች+ውሃ፣ ነጻጅናገይል House Rent, Construction Materials, Water, and Fuel and Power	የቤት ስቃዎች የቤት ግንባታዎች የቤት ቁሳቁስና የቤት ሠራተኛ ደመወዝ Furniture, Furnishings, Household Equipment and Operation	ሕክምና Medical Care and Health	ትራንስፖርት መገናኛ Transport and Communication	መዝናኛና ትምህርት Recreation, Entertainment and Education	የግል ጽሁፍ ስቃዎች Personal Care and Effects	ሌሎች ስቃዎች Miscellaneous Goods		
ታህሳስ 1999	100.0	100.0	100.0	100.0	100.0	100.0	100.0	100.0	100.0	100.0	100.0	100.0	100.0	100.0	December 2006
ሐምሌ 1999 - ሰኔ 2000	130.1	143.4	111.7	112.2	101.6	119.7	107.8	120.2	104.7	99.1	105.0	105.8	116.0	July 2007 - June 2008	
ሐምሌ 2000 - ሰኔ 2001	183.0	214.8	139.4	188.8	117.4	161.4	131.1	151.8	106.4	101.4	113.3	126.5	134.5	July 2008 - June 2009	
ሐምሌ 2001 - ሰኔ 2002	184.8	198.7	165.7	199.1	188.3	205.1	145.5	184.8	121.8	124.6	127.3	184.1	146.6	July 2009 - June 2010	
2002														2009/2010	
ታህሳስ 2002	183.8	197.3	165.4	193.8	192.0	203.5	146.1	182.7	121.5	126.6	119.7	182.0	153.0	December "	
ጥር 2002	182.9	195.4	165.8	201.1	189.1	204.4	143.9	188.9	128.3	129.1	125.3	188.2	140.6	January 2010	
የካቲት 2002	182.8	193.6	167.8	200.6	199.6	208.3	144.6	194.0	124.9	129.1	128.1	190.2	144.5	February "	
መጋቢት 2002	185.8	196.4	171.3	203.3	207.6	212.5	149.2	195.7	124.8	129.0	128.2	188.7	152.7	March "	
ሚያዝያ 2002	187.6	198.9	172.2	204.0	192.0	217.7	148.0	195.4	127.7	135.2	128.1	188.7	148.6	April "	
ግንቦት 2002	190.2	200.8	175.7	207.5	200.2	226.4	149.3	198.8	129.8	135.2	133.5	191.0	150.8	May "	
ሰኔ 2002	190.4	203.6	172.2	202.1	190.8	215.7	150.5	193.6	136.1	131.8	136.4	181.4	148.6	June "	
2003														2010/2011	
ሐምሌ 2002	189.7	202.4	172.4	208.9	193.4	219.9	147.3	196.1	127.7	133.2	135.5	183.7	148.6	July 2010	
ኔሐሴ 2002	188.9	200.2	173.4	213.6	205.9	226.6	142.6	198.3	125.6	133.2	141.2	193.6	153.1	August "	
መስከረም 2003	191.2	200.6	178.3	213.9	203.3	244.0	143.6	199.0	130.7	133.4	146.7	194.4	156.1	September "	
ጥቅምት 2003	194.2	202.0	183.3	213.5	214.6	247.9	145.2	204.6	134.2	151.6	157.9	200.1	175.3	October "	
ኅዳር 2003	193.7	196.8	189.5	213.4	211.5	254.5	152.0	199.8	138.6	160.4	156.5	213.6	193.2	November "	

ሠንጠረዥ 1ላ:- ጠቅላላ የምግብ ክፍሎች የ ሽንጃዎች ዋጋ መመዘኛ ኢንዱስትሪ በአገር አቀፍ ደረጃ

ታህሳስ 1999 = 100

Table 1b: Consumer Price Index of Total Food and Its Components at Country Level

December 2006 = 100

ወርና ዓመት	ጠቅላላ የምግብ	እህል	FOOD TAKEN AT HOME											ከቤት ውጪ የተወሰዱ የምግቦች	Month and Year	
			ጥሬ-ጥሬ	ባህና ሌሎች የተዘጋጁ የምግቦች	ሥጋ	ወተት+ ዓይብና እንቁሳል	ዘይትና ቅባቶች	አትክልትና ፍሬፍሬ	ቅመግ ቅመም	ድንችና ሌሎች ሥሬ-ሥፍራ	ቆይታ ቆይታ	ሌሎች የምግቦች	የግብረ-ጫ አገልግሎት			
ታህሳስ 1999	100.0	100.0	100.0	100.0	100.0	100.0	100.0	100.0	100.0	100.0	100.0	100.0	100.0	100.0	100.0	December 2006
ሐምሌ 1999 - ሰኔ 2000	137.2	137.2	124.1	137.6	120.0	117.7	152.6	142.0	325.9	125.7	124.5	104.7	113.9	118.7	118.7	July 2007 - June 2008
ሐምሌ 2000 - ሰኔ 2001	198.0	239.8	169.9	225.5	149.6	159.5	170.3	168.0	272.1	188.3	143.3	164.7	129.6	151.1	151.1	July 2008 - June 2009
ሐምሌ 2001 - ሰኔ 2002	187.2	195.4	167.9	235.5	163.0	184.2	167.4	184.9	217.3	194.3	175.1	196.7	155.2	174.4	174.4	July 2009 - June 2010
2002																2009/2010
ታህሳስ 2002	185.5	193.7	162.5	234.8	156.3	181.7	161.8	171.9	204.4	203.2	178.3	197.6	155.9	176.0	176.0	December "
ጥር 2002	186.0	192.4	161.8	240.2	161.0	191.2	164.7	173.4	200.2	205.6	178.2	198.0	156.1	176.6	176.6	January 2010
የካቲት 2002	185.7	187.4	168.0	237.2	160.9	188.7	165.7	191.6	207.2	201.9	186.1	202.0	158.5	174.7	174.7	February "
መጋቢት 2002	185.6	181.7	171.2	237.3	169.5	184.7	167.3	199.1	249.2	197.7	179.0	204.1	158.2	180.4	180.4	March "
ጊዳር 2002	186.2	178.7	171.5	234.9	171.3	191.7	174.4	202.3	265.1	202.0	179.0	212.8	160.7	180.4	180.4	April "
ግንቦት 2002	185.7	177.7	176.0	237.6	167.2	191.6	176.5	185.5	288.6	192.6	179.7	203.6	168.7	182.3	182.3	May "
ሰኔ 2002	188.6	181.2	169.0	236.9	172.1	186.9	175.3	199.2	315.1	196.8	181.0	202.9	166.4	183.8	183.8	June "
2003																2010/2011
ሐምሌ 2002	186.8	175.4	168.8	238.0	170.3	188.8	178.5	198.4	328.5	188.6	189.1	200.4	163.5	184.1	184.1	July 2010
ኦገስት 2002	188.4	171.4	174.6	237.0	174.2	198.3	182.1	214.3	325.9	194.0	203.2	201.4	163.7	184.5	184.5	August "
መስከረም 2003	193.2	166.8	173.3	239.4	183.5	207.2	199.3	277.4	332.9	203.3	211.9	213.4	163.9	189.2	189.2	September "
ጥቅምት 2003	197.1	167.4	181.5	238.0	175.1	212.0	215.9	293.6	323.1	201.1	231.9	222.7	169.8	195.1	195.1	October "
ኅዳር 2003	196.7	165.2	188.8	236.4	176.4	213.4	221.9	277.2	298.5	204.7	241.7	211.3	173.9	199.1	199.1	November "
ታህሳስ 2003	202.1	168.4	197.6	237.8	183.3	211.0	237.5	284.9	269.0	220.6	261.8	212.1	177.2	202.8	202.8	December "
	8.9	-13.0	21.6	1.3	17.2	16.1	46.7	65.7	31.6	8.6	46.8	7.3	13.7	15.2		

ሠንጠረዥ 2ላ፡- የምግብ ዋጋ መመዘኛ እንደነበረ ግጥምያዊ በአገር አቀፍ እና በክልሎች ደረጃ

ታህሳስ 1999 = 100

Table 2b: Summary of Consumer Price Indices of Food at Country and Regional Levels

December 2006=100

ወርና ዓመት	Reporting Level											Month and Year	
	Eth.	A.A.	Afar	Amhara	B.Gumuz	D.Dawa	Gambela	Harari	Oromia	SNNP	Somalia		Tigray
ታህሳስ 1999	100.0	100.0	100.0	100.0	100.0	100.0	100.0	100.0	100.0	100.0	100.0	100.0	December 2006
ሐምሌ 1999 - ሰኔ 2000	137.2	134.8	136.1	139.6	148.2	135.4	133.8	130.4	138.7	131.1	124.6	143.4	July 2007 - June 2008
ሐምሌ 2000 - ሰኔ 2001	198.0	190.7	189.5	198.7	226.1	199.5	226.8	205.1	202.0	189.3	195.9	214.8	July 2008 - June 2009
ሐምሌ 2001 - ሰኔ 2002	187.2	198.5	203.8	185.3	199.8	201.2	205.5	210.2	187.8	180.4	203.1	198.7	July 2009 - June 2010
2002													2009/2010
ታህሳስ 2002	185.5	196.8	207.1	183.1	205.8	195.3	200.8	209.0	184.4	182.2	199.8	197.3	December "
ጥር 2002	186.0	191.1	205.1	182.4	192.7	199.2	201.6	210.6	186.3	183.5	200.9	195.4	January 2010
የካቲት 2002	185.7	194.3	207.3	180.9	187.5	198.3	199.5	212.2	187.1	181.2	208.3	193.6	February "
መጋቢት 2002	185.6	197.8	203.9	182.5	178.7	203.6	189.9	218.1	186.6	177.9	204.7	196.4	March "
ሚያዝያ 2002	186.2	201.2	209.8	183.7	181.5	202.4	188.7	213.5	186.4	179.2	201.9	198.9	April "
ግንቦት 2002	185.7	203.2	210.1	184.1	179.1	203.8	194.4	218.1	186.9	174.0	201.8	200.8	May "
ሰኔ 2001	188.6	209.5	208.5	188.9	180.7	208.6	196.1	216.8	189.4	174.8	208.1	203.6	June "
2003													2010/2011
ሐምሌ 2002	186.8	207.3	209.6	187.2	175.8	204.7	197.1	217.3	187.1	173.9	198.6	202.4	July 2010
ኦገስት 2002	188.4	215.5	211.8	186.7	174.1	203.4	195.1	222.0	190.2	174.4	204.3	200.2	August "
መስከረም 2003	193.2	226.6	220.8	190.3	172.1	206.6	201.6	233.9	195.0	180.9	214.3	200.6	September "
ጥቅምት 2003	197.1	226.9	222.3	193.8	177.8	217.3	205.3	235.0	200.8	182.3	226.2	202.0	October "
ኅዳር 2003	196.7	219.9	223.9	192.1	179.6	211.5	205.7	242.0	200.8	184.2	240.3	196.8	November "
ታህሳስ 2003	202.1	220.2	222.8	193.7	180.5	219.6	215.2	241.1	206.7	197.4	249.4	192.7	December "
	8.9	11.9	7.6	5.8	-12.3	12.5	7.2	15.4	12.1	8.4	24.9	-2.3	

ወንጠረዥ 3 ለ፡- ጠቅላላ የሽግግር ዋጋ መመዘኛ ኢንዱስትሪ ቢሮ የተካተቱ ክፍሎች ለአዲስ አበባ ከተማ መስተዳድር

ታህሳስ 1999 = 100

Table 3b: Consumer Price Index of Total Food and Its Components for Addis Ababa City Administration

December 2006 = 100

ወርና ዓመት	ጠቅላላ የግዥ ስህ	እህ	በቤት ውስጥ የተወሰኑ የምግብ ዓይነቶች FOOD TAKEN AT HOME											ከቤት ውጪ የተወሰኑ የምግቦች	ክብት ወ-ጨ Month and Year
			ጥራጥራ	ዳቦና ሌሎች የተዘጋጁ የምግቦች	ሥጋ	ወተት+ ዓይብና እንቁላል	ዘይትና ቅባቶች	አትክልትና ፍራፍሬ	ቅመግ ቅመጦ	ድገችና ሌሎች ሥራሥሮች	ያልተቆላ ቡናና ሻይ ቅጠል	ሌሎች የምግቦች	የግብረ-ጫ አገልግሎት		
	Food Total	Cereals	Pulses	Bread and other Prepared Food	Meat	Milk,Cheese and Egg	Oils and Fats	Vegetables and Fruits	Spices	Potatoes, Other Tubers and Stems	Coffee (beans, whole) and Tea Leaves	Other Food Items	Milling Charges	Food taken away from home	
ታህሳስ 1999	100.0	100.0	100.0	100.0	100.0	100.0	100.0	100.0	100.0	100.0	100.0	100.0	100.0	100.0	December 2006
ሐምሌ 1999 - ሰኔ 2000	134.8	122.2	134.5	134.6	118.9	129.4	145.3	134.2	320.3	206.6	128.5	105.9	119.7	120.6	July 2007 - June 2008
ሐምሌ 2000 - ሰኔ 2001	190.7	213.2	192.8	217.4	153.7	182.2	166.2	183.0	252.2	288.8	137.3	159.8	139.7	156.1	July 2008 - June 2009
ሐምሌ 2001 - ሰኔ 2002	198.5	199.1	190.8	235.3	169.1	211.6	168.6	194.3	219.4	265.4	181.6	201.7	160.0	199.3	July 2009 - June 2010
2002															2009/2010
ታህሳስ 2002	196.8	198.9	187.0	238.9	163.7	206.8	164.3	161.8	221.4	272.9	190.5	216.7	159.4	200.1	December "
ጥር 2002	191.1	194.7	193.1	228.5	158.1	208.2	170.1	145.4	190.3	281.0	188.3	200.1	161.2	201.5	January 2010
የካቲት 2002	194.3	189.4	193.6	227.0	168.3	210.4	168.3	173.6	201.2	286.1	188.6	214.8	161.2	205.1	February "
መጋቢት 2002	197.8	185.3	194.9	233.9	175.0	205.7	167.9	188.7	246.7	269.0	187.9	195.6	161.2	216.6	March "
ግንቦት 2002	201.2	184.0	194.5	233.6	177.4	214.5	170.8	217.1	274.8	278.4	182.7	196.7	161.2	214.8	April "
ግንቦት 2002	203.2	182.3	194.2	247.0	178.7	222.7	173.4	196.1	289.8	260.1	181.1	211.0	163.2	219.8	May "
ሰኔ 2002	209.5	184.7	196.0	241.9	184.0	211.9	170.6	255.7	319.1	262.0	181.1	212.1	173.0	223.9	June "
2003															2010/2011
ሐምሌ 2002	207.3	182.7	201.0	237.7	184.2	219.3	173.7	222.8	326.2	252.7	190.8	204.8	170.5	228.8	July 2010
ኦገስት 2002	215.5	183.4	206.0	236.2	185.5	217.0	175.6	316.6	323.9	272.8	194.8	214.9	171.1	233.2	August "
መስከረም 2003	226.6	183.5	206.5	242.2	194.9	233.2	195.6	365.4	341.8	307.4	221.6	239.9	172.5	234.4	September "
ጥቅምት 2003	226.9	186.3	219.4	242.8	188.5	235.7	208.7	354.4	294.2	268.9	250.7	254.6	173.5	236.7	October "
ኅዳር 2003	219.9	177.4	221.6	241.6	192.5	229.4	215.0	323.6	250.5	251.9	257.1	217.7	173.5	242.8	November "
ታህሳስ 2003	220.2	176.1	237.1	240.0	192.0	222.2	220.3	303.2	238.9	343.7	266.3	216.6	143.5	246.5	December "

ሠንጠረዥ 4ላ፡- ጠቅላላ የምግብ ክፍሎች የ ሽግግር ዋጋ መመዘኛ ሊንደክስ ለለፋር ክልል መንግሥት

ታህሳስ 1999 = 100

Table 4b: Consumer Price index of Total Food and Its Components for the Afar Regional State

December 2006 = 100

ወርና ዓመት	ጠቅላላ የምግብ	Cereals	FOOD TAKEN AT HOME											የተወሰኑ የምግቦች	Month and Year	
			Pulses	Bread and other Prepared Food	Meat	Milk, Cheese and Egg	Oils and Fats	Vegetables and Fruits	Spices	Potatoes, Other Tubers and Stems	Coffee (beans, whole) and Tea Leaves	Other Food Items	Milling Charges			Food taken away from home
ታህሳስ 1999	100.0	100.0	100.0	100.0	100.0	100.0	100.0	100.0	100.0	100.0	100.0	100.0	100.0	100.0	100.0	December 2006
ሐምሌ 1999 - ሰኔ 2000	136.1	124.6	147.1	127.1	140.1	139.8	151.6	138.8	341.4	151.8	105.8	94.9	101.8	121.1	July 2007 - June 2008	
ሐምሌ 2000 - ሰኔ 2001	189.5	206.5	205.3	229.3	178.5	180.0	174.1	192.5	275.7	233.8	143.2	137.1	119.7	170.3	July 2008 - June 2009	
ሐምሌ 2001 - ሰኔ 2002	203.8	199.7	194.2	248.0	207.2	223.5	172.5	207.8	214.1	229.1	180.1	190.0	128.0	194.9	July 2009 - June 2010	
2002															2009/2010	
ታህሳስ 2002	207.1	209.9	192.9	242.5	197.0	241.3	164.8	187.2	217.4	232.9	176.3	183.5	119.1	197.1	December "	
ጥር 2002	205.1	202.7	196.2	255.7	211.3	233.4	166.7	172.0	194.8	222.4	181.7	188.3	136.9	195.8	January 2010	
የካቲት 2002	207.3	202.7	194.8	244.4	219.4	234.8	170.8	174.7	198.1	226.0	192.3	200.1	136.9	200.6	February "	
መጋቢት 2002	203.9	193.2	201.0	242.1	211.0	221.2	179.5	173.6	221.5	228.8	200.0	202.4	136.9	200.2	March "	
ግድሃ 2002	209.8	194.9	198.4	241.5	223.9	234.5	183.2	214.1	264.4	226.0	187.2	202.4	136.9	202.3	April "	
ግንቦት 2002	210.1	185.2	194.7	258.0	222.0	232.4	186.2	231.3	286.0	228.8	195.1	201.5	136.9	204.9	May "	
ሰኔ 2002	208.5	184.5	195.5	244.2	230.9	221.7	187.4	248.9	314.6	238.4	187.8	201.8	136.9	201.9	June "	
2003															2010/2011	
ሐምሌ 2002	209.6	180.3	198.0	255.2	236.5	228.1	189.1	273.5	308.7	228.8	180.3	188.6	136.9	205.5	July 2010	
ኦገስት 2002	211.8	180.5	201.7	271.5	244.0	228.9	182.8	284.4	315.6	228.8	183.2	190.3	138.1	201.0	August "	
መስከረም 2003	220.8	184.3	200.9	264.9	264.1	234.9	190.2	370.1	296.0	238.8	198.5	197.6	136.9	218.8	September "	
ጥቅምት 2003	222.3	174.9	214.8	261.4	266.4	241.6	208.9	380.3	291.5	217.7	212.5	192.3	136.9	220.8	October "	
ኅዳር 2003	223.9	179.9	228.2	263.7	264.0	229.0	211.9	340.8	270.2	217.7	234.2	206.3	148.1	234.8	November "	
ታህሳስ 2003	222.8	176.9	240.8	243.0	263.0	252.3	232.0	277.9	226.7	236.1	218.9	206.8	165.4	235.5	December "	

ውገጠረኝ 5ሱ- ጠቅላላ የምግብ ክፍሎች የ ሽግግር ዋጋ መመዘኛ ኢንዱስትሪ ለሌላው ክልል መገንጠያ

ታህሳስ 1999 = 100

Table 5b: Consumer Price Index of Total Food and Its Components for the Amhara Regional State

December 2006 = 100

ወርና ዓመት	ጠቅላላ የምግብ	እህል	በቤት ውስጥ የተወሰዱ የምግብ ዓይነቶች											ከቤት ውጪ የተወሰዱ የምግቦች	Month and Year
			ጥራጥራ	ብሮና ሌሎች የተዘጋጁ የምግቦች	ሥጋ	ወተት+ ዓይብና እንቁላል	ዘይትና ቅባቶች	ፍራፍሬ	ቅመግ ቅመም	ድገኝና ሌሎች ሥራ-ሥሮች	ቃላትና ቆይታ	ሌሎች የምግቦች	የግብረ-ጫ አገልግሎት		
	Food Total	Cereals	Pulses	Bread and other Prepared Food	Meat	Milk, Cheese and Egg	Oils and Fats	Vegetables and Fruits	Spices	Potatoes, Other Tubers and Stems	Coffee (beans, whole) and Tea Leaves	Other Food Items	Milling Charges	Food taken away from home	
ታህሳስ 1999	100.0	100.0	100.0	100.0	100.0	100.0	100.0	100.0	100.0	100.0	100.0	100.0	100.0	100.0	December 2006
ሐምሌ 1999 - ሰኔ 2000	139.6	137.6	117.9	131.0	117.8	125.6	161.8	129.4	297.0	122.1	125.2	105.8	106.7	121.4	July 2007 - June 2008
ሐምሌ 2000 - ሰኔ 2001	198.7	231.9	163.4	215.5	144.6	178.9	183.7	160.6	248.5	188.8	140.1	183.2	121.2	158.7	July 2008 - June 2009
ሐምሌ 2001 - ሰኔ 2002	185.3	194.7	155.9	221.4	164.3	206.7	176.1	181.1	199.8	201.0	185.1	212.1	150.5	179.7	July 2009 - June 2010
2002															2009/2010
ታህሳስ 2002	183.1	193.1	149.1	222.7	157.4	211.9	167.0	167.4	191.1	202.9	195.1	211.1	149.9	183.3	December "
ጥር 2002	182.4	190.9	149.5	219.4	165.4	208.9	170.7	165.6	183.8	200.6	195.9	209.3	153.3	184.5	January 2010
የካቲት 2002	180.9	185.1	155.5	220.4	162.1	212.6	170.7	184.9	181.0	206.9	201.4	214.1	159.5	181.9	February "
መጋቢት 2002	182.5	178.8	155.8	215.5	180.3	207.3	174.9	195.6	227.6	209.2	204.9	215.2	158.4	185.2	March "
ግንቦት 2002	183.7	179.4	157.6	218.6	179.1	210.9	180.7	189.7	241.3	208.6	204.6	225.7	158.4	182.5	April "
ግንቦት 2002	184.1	179.9	156.3	218.1	171.7	212.1	182.7	182.1	265.9	208.6	196.8	214.7	161.4	182.1	May "
ሰኔ 2002	188.9	185.2	161.7	221.8	169.3	214.2	188.6	194.7	278.8	206.3	193.6	212.8	160.4	187.8	June "
2003															2010/2011
ሐምሌ 2002	187.2	180.8	162.4	224.3	168.8	219.6	189.2	184.9	291.2	198.9	194.2	211.8	159.1	187.5	July 2010
ኦገስት 2002	186.7	174.2	167.4	220.1	171.3	213.8	194.5	232.4	298.7	191.4	202.1	210.8	164.5	185.6	August "
መስከረም 2003	190.3	171.2	168.9	219.9	185.7	214.4	206.3	314.8	302.7	189.7	210.8	222.4	164.6	192.4	September "
ጥቅምት 2003	193.8	174.3	179.7	220.4	174.0	225.4	219.7	312.1	302.5	197.9	214.6	227.7	164.9	195.3	October "
ኅዳር 2003	192.1	167.7	185.1	220.6	179.4	242.7	233.5	289.7	295.2	191.0	226.2	212.0	171.6	199.1	November "
ታህሳስ 2003	193.7	166.8	196.6	217.0	182.0	237.4	252.8	291.0	262.4	207.4	241.0	215.8	175.9	203.6	December "

ሠንጠረዥ 6ሀ:- ጠቅላላ የምግብ ክፍሎች የ ሽግግር ዋጋ መመዘኛ ለጊዜያዊ ለቤት ገንዘብ ጥያቄ አላገደ መገንጠያ
 ታህሳስ 1999 = 100

Table 6b: Consumer Price Index of Total Food and Its Components for the Benishangul Gumuz Regional state
 December 2006 = 100

ወርና ዓመት	ጠቅላላ ምግብ	እህል	በቤት ውስጥ የተወሰዱ የምግብ ዓይነቶች											ከቤት ውጪ የተወሰዱ ምግቦች	Month and Year
			ጥራጥራ	ባህና ሌሎች ምግቦች	ሥጋ	ወተት+ ዓይብና እንቁላል	ዘይትና ቅባቶች	አትክልትና ፍራፍሬ	ቅመግ ቅመም	ድገኛና ሌሎች ሥራሥሮች	ያልተቆላ ቡናና ሻይ ቅጠል	ሌሎች ምግቦች	የግብረጫ አገልግሎት		
	Food Total	Cereals	Pulses	Bread and other Prepared Food	Meat	Milk,Cheese and Egg	Oils and Fats	Vegetables and Fruits	Spices	Potatoes, Other Tubers and Stems	Coffee (beans, whole) and Tea Leaves	Other Food Items	Milling Charges	Food taken away from home	
ታህሳስ 1999	100.0	100.0	100.0	100.0	100.0	100.0	100.0	100.0	100.0	100.0	100.0	100.0	100.0	100.0	December 2006
ሐምሌ 1999 - ሰኔ 2000	148.2	160.9	112.5	129.7	131.1	108.5	142.4	116.6	366.2	127.0	128.5	105.1	111.1	117.8	July 2007 - June 2008
ሐምሌ 2000 - ሰኔ 2001	226.1	297.3	158.6	222.6	172.4	158.4	176.9	149.0	332.9	200.3	134.5	166.3	126.0	150.8	July 2008 - June 2009
ሐምሌ 2001 - ሰኔ 2002	199.8	217.6	163.4	223.5	169.5	195.6	181.4	160.1	274.2	183.9	191.7	198.8	155.8	186.5	July 2009 - June 2010
2002															2009/2010
ታህሳስ 2002	205.8	238.3	144.2	225.5	159.2	191.5	171.2	157.5	253.4	178.8	208.7	197.8	157.6	181.2	December "
ጥር 2002	192.7	202.9	151.4	235.3	161.1	203.0	178.9	149.2	274.0	174.3	205.5	201.0	168.3	186.9	January 2010
የካቲት 2002	187.5	189.8	164.2	219.0	157.0	210.0	182.7	155.3	269.8	182.4	201.2	200.7	160.6	187.7	February "
መጋቢት 2002	178.7	163.2	163.2	218.4	161.0	213.6	184.7	164.1	308.5	170.9	189.8	212.3	160.6	195.2	March "
ጊያዝያ 2002	181.5	159.9	159.9	219.5	169.1	212.8	194.2	175.6	330.0	175.6	195.7	215.7	160.6	206.8	April "
ግንቦት 2002	179.1	150.1	161.0	221.6	170.5	195.6	202.7	156.1	394.9	183.3	194.4	210.0	162.2	210.6	May "
ሰኔ 2002	180.7	145.9	171.8	207.0	184.3	196.1	185.0	179.5	419.2	192.6	201.2	203.6	161.5	211.5	June "
2003															2010/2011
ሐምሌ 2002	175.8	140.6	176.1	224.5	179.3	211.8	182.9	162.2	319.4	218.1	222.8	201.2	150.0	216.2	July 2010
ኦገስት 2002	174.1	134.3	179.5	223.4	170.4	216.3	180.5	166.1	335.1	206.6	233.6	202.6	150.0	216.6	August "
መስከረም 2003	172.1	122.6	175.8	213.6	177.7	206.9	190.3	216.2	318.3	212.2	233.7	206.0	150.2	217.6	September "
ጥቅምት 2003	177.8	126.1	167.9	214.8	190.7	210.0	202.5	220.5	344.8	182.3	265.1	223.3	153.9	217.2	October "
ኅዳር 2003	179.6	124.9	179.3	207.5	204.2	218.8	187.1	195.6	380.7	182.2	278.0	211.1	166.6	223.0	November "
ታህሳስ 2003	180.5	132.8	182.1	217.5	189.5	233.1	194.0	182.9	306.1	200.9	291.5	205.4	166.6	224.9	December "

ሠንጠረዥ 7A:- ጠቅላላ የተወሰኑ የምግብ ክፍሎች የ ሽግግር ዋጋ መመዘኛ ኢንዱስትሪ ለድረጃዎ አስተዳደር ካውንሰል

ታህሳስ 1999 = 100

Table 7b: Consumer Price Index of Total Food and Its Components for the Dire Dawa Administrative Council

December 2006 = 100

ወርና ዓመት	ጠቅላላ የምግብ	እህል	በቤት ውስጥ የተወሰኑ የምግብ ዓይነቶች											ጠቅላላ የተወሰኑ የምግቦች	ክብት ወ-ወ
			ጥራጥራ	ዳቦና ሌሎች የተዘጋጁ የምግቦች	ሥጋ	ወተት+ ዓይብና እንቁላል	ዘይትና ቅባቶች	ፍራፍሬ	አትክልትና ፍራፍሬ	ቅመግ ቅመም	ድገትና ሌሎች ሥራጥኖች	ያልተቆላ ቡናና ሻይ ቅጠል	ሌሎች የምግቦች		
	Food Total	Cereals	Pulses	Bread and other Prepared Food	Meat	Milk, Cheese and Egg	Oils and Fats	Vegetables and Fruits	Spices	Potatoes, Other Tubers and Stems	Coffee (beans, whole) and Tea Leaves	Other Food Items	Milling Charges	Food taken away from home	Month and Year
ታህሳስ 1999	100.0	100.0	100.0	100.0	100.0	100.0	100.0	100.0	100.0	100.0	100.0	100.0	100.0	100.0	December 2006
ሐምሌ 1999 - ሰኔ 2000	135.4	140.9	148.3	127.9	107.8	118.5	151.7	132.9	353.5	167.6	133.9	95.4	90.7	114.7	July 2007 - June 2008
ሐምሌ 2000 - ሰኔ 2001	199.5	240.3	197.8	236.8	130.0	177.9	183.5	183.0	298.6	221.9	161.8	114.0	95.5	176.8	July 2008 - June 2009
ሐምሌ 2001 - ሰኔ 2002	201.2	220.8	189.2	243.2	142.4	207.1	179.2	205.8	226.8	196.5	190.4	117.0	104.8	189.0	July 2009 - June 2010
2002															2009/2010
ታህሳስ 2002	195.3	219.7	185.3	239.3	130.2	219.4	174.6	160.3	215.5	155.8	186.4	117.2	104.9	182.2	December "
ጥር 2002	199.2	222.8	183.3	243.2	137.3	216.7	174.6	179.6	203.9	163.8	195.2	117.3	104.9	183.8	January 2010
ፀደቅ 2002	198.3	214.9	184.1	244.8	138.7	217.4	177.4	181.1	200.3	195.8	195.1	117.3	104.9	185.9	February "
መጋቢት 2002	203.6	215.0	191.3	240.9	140.4	214.3	186.8	213.7	230.6	234.2	196.5	117.3	104.9	207.0	March "
ግንቦት 2002	202.4	211.6	194.0	241.6	148.4	201.6	180.7	214.6	311.4	214.8	196.4	117.3	104.9	189.7	April "
ግንቦት 2002	203.8	206.2	197.6	240.2	161.8	185.6	190.4	209.2	301.1	230.9	211.2	117.3	104.9	195.1	May "
ሰኔ 2002	208.6	207.8	199.1	245.7	160.2	195.8	188.4	265.1	334.2	225.5	200.9	117.3	104.9	208.5	June "
2003															2010/2011
ሐምሌ 2002	204.7	206.7	198.8	238.6	158.7	187.4	185.9	281.4	320.2	225.3	193.6	117.3	104.9	191.7	July 2010
ኦገስት 2002	203.4	208.4	210.2	241.6	159.9	194.5	188.4	263.6	313.2	248.8	176.5	117.3	104.9	191.9	August "
መስከረም 2003	206.6	204.5	217.4	245.2	165.4	213.1	203.6	297.7	331.3	264.5	172.2	117.3	103.7	190.4	September "
ጥቅምት 2003	217.3	214.1	241.8	240.8	160.6	209.2	220.3	359.4	316.9	269.7	183.1	119.1	115.5	208.4	October "
ኅዳር 2003	211.5	209.5	245.9	249.9	165.0	218.2	227.0	340.8	244.6	253.1	153.9	119.1	110.0	210.1	November "
ታህሳስ 2003	219.6	207.2	257.1	243.3	163.9	223.2	238.6	297.1	228.2	252.7	216.6	118.2	113.0	232.1	December "

ሠንጠረዥ 8ለ፡- ጠቅላላ የምግብ ክፍሎች የ ሽንጃቸው ዋጋ መመዘኛ ኢንዱስትሪ ለጋምቤላ ሕዝቦች ክልል የምግብ መግቢያ

ታህሳስ 1999 = 100

Table 8b: Consumer Price Index of Total Food and Its Components for the Gambela Peoples Regional State

December 2006 = 100

ወርና ዓመት	ጠቅላላ የምግብ	እህል	FOOD TAKEN AT HOME											ከቤት ውጪ የተወሰዱ የምግቦች	ክብት ወ-ጨ	Month and Year
			ጥራጥራ	ባህርት ለሌሎች የተዘጋጁ የምግቦች	ሥጋ	ወተት+ ዓይብና እንቁላል	ዘይትና ቅባቶች	አትክልትና ፍራፍሬ	ቅመግ ቅመም	ድገትና ሌሎች ሥራ-ሥሮች	ቃላት ቃላት	ሌሎች የምግቦች	የግብረ-ጫ አገልግሎት			
ታህሳስ 1999	100.0	100.0	100.0	100.0	100.0	100.0	100.0	100.0	100.0	100.0	100.0	100.0	100.0	100.0	100.0	December 2006
ሐምሌ 1999 - ሰኔ 2000	133.8	124.8	141.2	167.1	131.8	131.5	150.1	138.5	411.3	142.3	124.0	112.4	110.4	133.2	July 2007 - June 2008	
ሐምሌ 2000 - ሰኔ 2001	226.8	253.3	294.1	360.5	153.4	201.1	167.9	224.5	313.5	219.5	122.9	165.6	126.7	167.0	July 2008 - June 2009	
ሐምሌ 2001 - ሰኔ 2002	205.5	193.2	289.8	370.4	171.4	250.7	166.1	262.9	205.7	195.9	152.3	189.4	125.6	175.8	July 2009 - June 2010	
2002															2009/2010	
ታህሳስ 2002	200.8	188.8	290.8	368.0	165.8	246.6	164.2	244.4	170.3	205.5	160.3	193.0	131.6	175.1	December "	
ጥር 2002	201.6	192.1	298.8	369.2	166.4	254.6	166.6	238.3	170.3	197.2	148.6	190.5	115.5	175.7	January 2010	
ፀደቅ 2002	199.5	184.5	310.4	372.4	167.7	273.4	166.0	234.8	206.8	200.8	151.2	185.8	129.1	173.2	February "	
መጋቢት 2002	189.9	155.8	260.9	365.1	167.2	248.9	165.9	307.7	206.8	184.6	148.6	194.0	129.1	196.4	March "	
ግንቦት 2002	188.7	147.0	260.5	366.3	176.7	258.7	171.5	306.6	267.6	189.3	152.6	206.4	129.1	182.1	April "	
ግንቦት 2002	194.4	155.2	274.1	383.4	201.8	294.9	175.2	274.5	271.7	188.9	151.1	194.9	134.0	182.1	May "	
ሰኔ 2002	196.1	161.0	300.9	362.1	187.5	275.1	173.8	266.4	312.2	206.7	155.4	190.7	129.1	182.1	June "	
2003															2010/2011	
ሐምሌ 2002	197.1	164.0	292.6	357.9	187.5	288.1	173.4	266.1	336.5	185.8	171.9	186.5	129.1	182.1	July 2010	
ኔሐሴ 2002	195.1	152.6	322.9	347.7	188.1	281.3	174.6	266.0	356.7	203.2	193.9	187.4	129.1	192.7	August "	
መስከረም 2003	201.6	148.7	300.3	339.3	192.9	307.7	179.3	319.2	365.0	246.6	205.9	200.7	129.1	198.0	September "	
ጥቅምት 2003	205.3	147.0	300.6	344.1	189.2	245.9	182.4	344.8	372.9	266.2	252.8	209.4	129.1	220.6	October "	
ኅዳር 2003	205.7	153.6	308.0	350.9	191.7	288.7	199.3	310.0	389.3	219.7	271.4	200.1	129.1	220.6	November "	
ታህሳስ 2003	215.2	166.9	336.7	342.0	194.3	308.8	205.8	324.6	331.9	226.8	266.6	192.4	110.0	219.8	December "	

ወንጠረኛ ዓለ፡- ጠቅላላ የምግብና የምግብ ክፍሎች የ ሽንጃዎች ዋጋ መመዘኛ ኢንዱስትሪ ለሐረር ክልል ወንግግት

ታህሳስ 1999 = 100

Table 9b: Consumer Price Index of Total Food and Its Components for the Harari People Regional State

December 2006 = 100

ወርና ዓመት	ጠቅላላ የምግብ	አሀል	FOOD TAKEN AT HOME											ከቤት ውጪ የተወሰዱ የምግቦች	Month and Year	
			ጠቅላላ	የተዘጋጁ የምግቦች	ጾታ	ወተት+ ዓይብና እንቁሳል	ዘይትና ቅባቶች	አትክልትና ፍራፍራ	ቅመግ ቅመም	ድንችና ሌሎች ሥራሥሮች	ያልተቆላ ቡናና ሻይ ቅጠል	ሌሎች የምግቦች	የግብረጫ አገልግሎት			
ታህሳስ 1999	100.0	100.0	100.0	100.0	100.0	100.0	100.0	100.0	100.0	100.0	100.0	100.0	100.0	100.0	100.0	December 2006
ሐምሌ 1999 - ሰኔ 2000	130.4	128.3	129.6	124.0	112.4	120.7	160.5	154.9	312.5	182.1	119.6	101.4	101.9	123.1	July 2007 - June 2008	
ሐምሌ 2000 - ሰኔ 2001	205.1	228.0	164.6	244.8	141.2	154.9	191.3	171.7	285.4	227.0	216.9	120.4	125.9	177.8	July 2008 - June 2009	
ሐምሌ 2001 - ሰኔ 2002	210.2	209.5	171.6	221.5	150.4	159.0	184.9	200.4	188.1	175.6	285.7	123.0	136.7	192.3	July 2009 - June 2010	
2002															2009/2010	
ኅዳር 2002	200.1	213.6	162.1	220.0	148.8	159.3	177.6	190.6	161.6	161.7	238.7	122.2	138.4	185.2	November "	
ታህሳስ 2002	209.0	210.0	164.6	218.1	145.8	158.7	179.1	188.9	171.8	152.2	291.4	122.2	138.4	191.6	December "	
ጥር 2002	210.6	209.5	167.2	223.6	149.0	157.7	179.7	194.4	187.2	160.6	291.0	122.2	138.4	196.3	January 2010	
የካቲት 2002	212.2	208.7	170.6	220.8	151.7	157.2	191.8	185.0	180.0	186.7	300.4	123.0	138.4	189.6	February "	
መጋቢት 2002	218.1	200.6	171.2	217.7	151.8	157.0	195.7	185.6	201.5	217.2	339.6	123.0	138.4	195.8	March "	
ግድሃዳ 2002	213.5	199.5	175.3	214.3	153.3	158.4	195.4	202.5	245.3	184.4	310.7	123.8	138.4	197.6	April "	
ግንቦት 2002	218.1	201.0	173.5	210.5	157.7	154.9	201.4	213.0	216.5	207.8	331.7	123.0	138.4	197.4	May "	
ሰኔ 2002	216.8	198.3	184.8	214.0	156.8	167.2	198.2	244.0	243.6	184.4	309.9	123.8	138.4	209.8	June "	
2003					23.5										2010/2011	
ሐምሌ 2002	217.3	200.9	191.1	212.7		170.6	196.3	249.3	252.8	203.3	304.8	123.8	138.4	205.0	July 2010	
ኦገስት 2002	222.0	199.9	210.3	211.9	166.2	176.7	190.7	264.8	241.4	207.8	322.7	122.2	138.4	209.5	August "	
መስከረም 2003	233.9	198.3	219.9	220.1	189.8	175.9	217.5	369.9	218.8	222.2	339.2	123.0	138.4	216.4	September "	
ጥቅምት 2003	235.0	194.0	257.2	219.9	176.4	178.3	220.4	406.0	222.8	212.8	340.6	123.8	138.4	212.4	October "	
ኅዳር 2003	242.0	195.9	259.9	219.8	190.8	179.4	234.4	346.8	217.2	198.3	380.2	124.6	138.4	218.6	November "	
ታህሳስ 2003	241.1	193.7	275.3	218.8	183.9	181.8	245.3	314.0	224.0	222.2	380.8	123.8	138.4	218.7	December "	

ሠንጠረዥ 100:- ጠቅላላ የምግብ ወጪዎች የሽያጭ ዋጋ መመዘኛ ኢንዱስትሪ ለአርጋጊያ ክልል የገጠማዊ የምግብ ወጪዎች
 ታህሳስ 1999 = 100

Table 10b: Consumer Price Index of Total Food and Its Components for the Oromiya Regional State

December 2006 = 100

ወርና ዓመት	ጠቅላላ የምግብ	አሀል	FOOD TAKEN AT HOME											ከቤት ውጪ የተወሰዱ የምግቦች	Month and Year	
			ጥሬ ጥሬ	ዳቦና ሌሎች የተዘጋጁ የምግቦች	ሥጋ	ወተት+ ዓይብና እንቁላል	ዘይትና ቅባቶች	አትክልትና ፍሬፍሬ	ቅመግ ቅመም	ድገትና ሌሎች ሥጋ-ሥጋዎች	ቆይታና ሌሎች ቅጠል	ሌሎች የምግቦች	የግብረጫ አገልግሎት			
ታህሳስ 1999	100.0	100.0	100.0	100.0	100.0	100.0	100.0	100.0	100.0	100.0	100.0	100.0	100.0	100.0	100.0	December 2006
ሐምሌ 1999 - ሰኔ 2000	138.7	137.3	127.0	147.9	119.9	116.4	151.9	147.1	379.6	134.7	121.9	102.5	118.2	122.6	122.6	July 2007 - June 2008
ሐምሌ 2000 - ሰኔ 2001	202.0	242.8	175.2	238.0	152.0	155.2	163.5	176.6	314.2	204.1	142.0	161.6	133.9	156.2	156.2	July 2008 - June 2009
ሐምሌ 2001 - ሰኔ 2002	187.8	193.2	174.6	248.0	161.2	175.7	160.5	192.8	253.7	202.1	171.0	197.2	158.1	181.4	181.4	July 2009 - June 2010
2002																2009/2010
ታህሳስ 2002	184.4	190.6	168.1	246.5	153.5	170.8	155.1	173.8	237.6	199.8	174.5	197.2	160.6	181.7	181.7	December "
ጥር 2002	186.3	189.9	166.2	260.0	157.2	182.8	156.6	181.8	233.9	208.9	175.5	199.8	158.1	182.0	182.0	January 2010
የካቲት 2002	187.1	187.1	174.9	252.5	159.9	177.4	159.6	204.5	244.1	202.3	185.2	204.4	160.3	178.1	178.1	February "
መጋቢት 2002	186.6	180.6	182.1	255.7	167.4	175.1	159.4	217.1	300.3	204.9	172.2	209.9	159.9	187.0	187.0	March "
ግንቦት 2002	186.4	174.6	181.7	248.5	167.7	181.9	167.8	220.2	311.0	213.8	172.8	221.0	164.9	189.4	189.4	April "
ግንቦት 2002	186.9	174.1	191.4	250.9	160.7	187.3	170.8	200.5	332.3	213.1	174.7	205.1	175.8	190.5	190.5	May "
ሰኔ 2002	189.4	178.1	173.7	249.5	171.8	179.7	171.4	200.4	368.5	228.2	176.9	202.7	170.9	190.2	190.2	June "
2003																2010/2011
ሐምሌ 2002	187.1	172.2	171.3	249.4	168.3	181.3	175.6	201.0	393.7	207.0	187.0	199.1	166.9	191.4	191.4	July 2010
ኦገስት 2002	190.2	170.9	179.9	250.9	175.0	193.9	179.6	198.5	364.9	223.5	203.5	199.0	164.4	192.3	192.3	August "
መስከረም 2003	195.0	165.4	173.9	253.9	181.6	203.7	200.5	262.9	386.3	234.2	209.2	213.4	162.6	196.7	196.7	September "
ጥቅምት 2003	200.8	164.7	182.4	250.8	171.6	206.4	221.3	292.5	377.5	235.7	232.6	220.4	173.8	206.6	206.6	October "
ኅዳር 2003	200.8	163.8	193.4	250.2	169.5	206.7	223.5	283.7	335.9	233.1	243.7	208.7	177.9	212.7	212.7	November "
ታህሳስ 2003	206.7	168.7	202.4	253.9	182.3	197.7	237.3	285.7	307.7	248.7	264.1	208.5	180.2	211.1	211.1	December "

ሠንጠረዥ 11A:- ጠቅላላ የምግብ ክፍሎች የሽግግር ዋጋ መመዘኛ ኢንዱስትሪ ለደብዳቤ ክልላዊ መንግሥት

ታህሳስ 1999 = 100

Table 11b: Consumer Price Index of Total Food and Its Components for the SNNP Regional State

December 2006 = 100

ወርና ዓመት	ጠቅላላ የምግብ	እህል	FOOD TAKEN AT HOME											ከቤት ውጪ የተወሰዱ የምግቦች	ክብት ወ-ጨ
			ጥራጥራ	ዳቦና ሌሎች የተዘጋጁ የምግቦች	ሥጋ	ወተት+ ዓይብና እንቁላል	ዘይትና ቅባቶች	ፍራፍራ	ቅመግ ቅመጦ	ድገትና ሌሎች ሥራሥሮች	ታላቅታ ስናና ሻይ ቅጠል	ሌሎች የምግቦች	የግብረጫ አገልግሎት		
	Food Total	Cereals	Pulses	Bread and other Prepared Food	Meat	Milk,Cheese and Egg	Oils and Fats	Vegetables and Fruits	Spices	Potatoes, Other Tubers and Stems	Coffee (beans, whole) and Tea Leaves	Other Food Items	Milling Charges	Food taken away from home	Month and Year
ታህሳስ 1999	100.0	100.0	100.0	100.0	100.0	100.0	100.0	100.0	100.0	100.0	100.0	100.0	100.0	100.0	December 2006
ሐምሌ 1999 - ሰኔ 2000	131.1	136.1	122.9	126.9	121.5	119.2	143.7	146.8	264.5	117.1	132.2	112.2	106.0	107.1	July 2007 - June 2008
ሐምሌ 2000 - ሰኔ 2001	189.3	237.2	156.7	220.2	152.6	159.1	167.3	156.8	227.9	173.1	145.0	175.6	121.2	127.3	July 2008 - June 2009
ሐምሌ 2001 - ሰኔ 2002	180.4	186.1	161.7	232.0	165.8	193.9	169.5	175.9	193.9	185.8	168.0	203.6	138.7	146.6	July 2009 - June 2010
2002															2009/2010
ታህሳስ 2002	182.2	183.1	160.3	230.3	162.2	194.5	168.3	178.1	180.8	205.4	162.7	201.0	137.1	147.3	December "
ጥር 2002	183.5	188.2	159.4	229.2	164.4	202.0	170.5	176.2	182.8	202.8	156.6	205.5	142.5	148.2	January 2010
የካቲት 2002	181.2	177.7	160.7	232.8	163.7	204.6	166.4	190.0	206.5	199.8	163.2	207.0	140.3	147.3	February "
መጋቢት 2002	177.9	173.6	159.2	229.9	165.1	196.0	170.8	183.8	218.0	189.1	163.0	212.6	143.4	151.9	March "
ግንቦት 2002	179.2	173.7	158.8	228.7	171.8	210.1	178.4	182.1	223.8	190.2	163.2	217.7	142.9	151.8	April "
ግንቦት 2002	174.0	168.0	161.2	239.3	173.4	193.3	172.6	163.4	261.8	172.2	164.8	209.1	146.1	158.2	May "
ሰኔ 2002	174.8	165.4	159.1	231.8	173.3	196.9	165.4	189.8	313.4	168.1	169.3	209.2	146.7	154.0	June "
2003															2010/2011
ሐምሌ 2002	173.9	157.2	161.0	233.5	173.4	195.3	166.2	195.0	326.1	170.6	181.6	206.2	149.4	153.8	July 2010
ኔሐሴ 2002	174.4	149.2	161.8	229.1	173.5	203.7	173.3	212.0	354.9	168.3	199.2	211.1	151.4	156.5	August "
መስከረም 2003	180.9	145.7	167.2	234.1	180.7	210.3	186.4	266.3	335.6	177.4	215.9	219.5	154.5	161.2	September "
ጥቅምት 2003	182.3	146.3	172.7	234.4	176.8	215.0	194.7	275.6	300.9	171.3	236.6	228.2	157.2	167.0	October "
ኅዳር 2003	184.2	153.1	175.6	227.4	178.8	217.8	201.4	253.3	258.4	182.0	232.1	223.8	158.8	168.0	November "
ታህሳስ 2003	197.4	164.8	178.4	235.4	183.3	231.9	223.3	291.4	242.8	197.0	257.9	222.6	163.5	176.2	December "

ሠንጠረዥ 12ለ:- ጠቅላላ የምግብ ክፍሎች የ ሽግግር ዋጋ መመዘኛ ኢንዱስትሪ ስራዎች ክልል መገንጠያ

ታህሳስ 1999 = 100

Table 12b: Consumer Price Index of Total Food and Its Components for the Somali Regional State

December 2006 = 100

ወርና ዓመት	ጠቅላላ የምግብ	እህል	በቤት ውስጥ የተወሰዱ የምግብ ዓይነቶች											በቤት ውጪ የተወሰዱ የምግቦች	Month and Year
			ጥራጥራ	ላሳና ሌሎች የተዘጋጁ የምግቦች	ሥጋ	ወተት+ ዓይብና እንቁሳል	ዘይትና ቅባቶች	አትክልትና ፍራፍራ	ቅመግ ቅመም	ድጎችና ሌሎች ሥራሥሮች	ያልተቆላ ቡናና ሻይ ቅጠል	ሌሎች የምግቦች	የግብረጫ አገልግሎት		
Food Total	Cereals	Pulses	Bread and other Prepared Food	Meat	Milk,Cheese and Egg	Oils and Fats	Vegetables and Fruits	Spices	Potatoes, Other Tubers and Stems	Coffee (beans, whole) and Tea Leaves	Other Food Items	Milling Charges	Food taken away from home		
ታህሳስ 1999	100.0	100.0	100.0	100.0	100.0	100.0	100.0	100.0	100.0	100.0	100.0	100.0	100.0	100.0	December 2006
ሐምሌ 1999 - ሰኔ 2000	124.6	136.0	124.9	120.3	126.3	103.1	138.8	128.3	299.8	145.0	115.8	102.8	99.2	120.5	July 2007 - June 2008
ሐምሌ 2000 - ሰኔ 2001	195.9	246.5	175.9	207.5	167.3	171.8	175.4	163.7	272.0	220.7	149.0	152.1	110.4	157.8	July 2008 - June 2009
ሐምሌ 2001 - ሰኔ 2002	203.1	230.5	173.9	223.6	202.5	194.7	172.8	182.3	194.7	191.1	188.0	159.8	119.9	193.0	July 2009 - June 2010
2002															2009/2010
ታህሳስ 2002	199.8	228.2	171.6	223.7	198.1	190.6	171.1	154.9	200.0	175.8	182.4	158.0	119.9	197.1	December "
ጥር 2002	200.9	217.1	170.6	232.0	200.2	209.9	168.9	165.6	191.7	168.4	196.2	157.9	119.9	196.2	January 2010
የካቲት 2002	208.3	226.5	168.2	246.1	203.5	209.8	172.0	155.4	183.3	196.5	214.1	158.2	119.9	199.5	February "
መጋቢት 2002	204.7	225.0	176.0	242.1	197.5	208.2	180.9	162.6	183.3	186.1	194.7	158.3	119.9	200.7	March "
ግድሃዎ 2002	201.9	221.8	176.2	244.9	207.1	189.6	185.1	173.5	208.3	186.1	191.1	158.1	119.9	200.5	April "
ግንቦት 2002	201.8	220.8	186.1	228.9	228.5	179.3	181.2	186.9	244.4	189.6	197.7	158.0	119.9	202.0	May "
ሰኔ 2002	208.1	233.3	180.1	218.0	231.2	168.3	181.4	228.8	275.0	198.3	196.8	180.8	119.9	204.9	June "
2003															2010/2011
ሐምሌ 2002	198.6	205.6	188.4	209.1	235.2	180.8	182.2	235.4	330.6	193.5	186.3	189.0	119.9	198.4	July 2010
ክለሴ 2002	204.3	215.0	192.2	215.1	239.7	189.9	182.0	227.9	333.3	193.5	189.8	188.2	119.9	203.5	August "
መስከረም 2003	214.3	212.0	201.1	219.4	267.0	207.9	204.6	279.4	319.4	209.7	214.2	191.1	118.0	219.0	September "
ጥቅምት 2003	226.2	210.9	208.0	218.8	269.1	232.3	212.1	300.5	302.8	224.0	247.9	224.8	119.1	209.0	October "
ኅዳር 2003	240.3	214.2	228.2	216.3	268.3	227.9	223.2	347.3	225.0	205.0	319.8	225.0	123.7	217.7	November "
ታህሳስ 2003	249.4	225.7	229.3	217.9	265.1	234.8	234.7	303.5	275.0	224.5	337.4	234.5	128.9	226.1	December "

ሠንጠረዥ 13ለ:- ጠቅላላ የምግብ ወጪዎች የ ሽንጻዎች ዋጋ መመዘኛ ኢንዱስትሪ ለትግራይ ክልል የምግብ ወጪ
 ታህሳስ 1999 = 100

Table 13b: Consumer Price Index of Total Food and Its Components for the Tigray Regional State

December 2006 = 100

ወርና ዓመት	ጠቅላላ የምግብ	አሀ	FOOD TAKEN AT HOME											ከቤት ውጪ የተወሰዱ የምግቦች	Month and Year
			ሰቤት ውስጥ የተወሰዱ የምግብ ዓይነቶች	ጥራጥራ	ዳቦና ሌሎች የተዘጋጁ የምግቦች	ሥጋ	ወተት+ ዓይብና እንቁላል	ዘይትና ቅባቶች	አትክልትና ፍራፍራ	ቅመግ ቅመም	ድንችና ሌሎች ሥራሥሮች	ያልተቆላ ቡናና ሻይ ቅጠል	ሌሎች የምግቦች		
Food Total	Cereals	Pulses	Bread and other Prepared Food	Meat	Milk, Cheese and Egg	Oils and Fats	Vegetables and Fruits	Spices	Potatoes, Other Tubers and Stems	Coffee and Tea Leaves	Other Food Items	Milling Charges	Food taken away from home	Month and Year	
ታህሳስ 1999	100.0	100.0	100.0	100.0	100.0	100.0	100.0	100.0	100.0	100.0	100.0	100.0	100.0	100.0	December 2006
ሐምሌ 1999 - ሰኔ 2000	143.4	138.5	129.3	126.5	122.8	114.8	166.5	122.5	345.0	149.0	127.1	104.2	113.7	124.7	July 2007 - June 2008
ሐምሌ 2000 - ሰኔ 2001	214.8	254.3	180.2	200.9	140.6	158.9	186.5	155.0	287.1	216.1	147.2	156.4	131.2	161.2	July 2008 - June 2009
ሐምሌ 2001 - ሰኔ 2002	198.7	218.5	175.5	222.7	155.8	184.5	176.0	160.4	191.5	209.0	189.6	197.1	163.5	187.9	July 2009 - June 2010
2002															2009/2010
ታህሳስ 2002	197.3	219.2	176.0	219.5	150.2	180.8	168.1	144.4	166.2	185.9	205.6	203.5	159.4	191.3	December "
ጥር 2002	195.4	214.2	176.0	224.8	156.2	183.5	175.8	137.4	172.5	188.5	204.8	204.1	160.9	187.2	January 2010
የካቲት 2002	193.6	209.5	178.0	221.0	149.8	181.3	179.1	146.1	182.8	198.2	201.3	200.3	162.7	191.1	February "
መጋቢት 2002	196.4	212.1	177.9	226.4	145.7	177.4	179.1	154.2	208.0	224.7	203.1	200.0	161.8	192.7	March "
ግድሃ 2002	198.9	207.4	179.3	227.7	156.0	186.5	188.4	174.5	252.7	215.4	205.1	218.2	160.6	193.0	April "
ግንቦት 2002	200.8	208.4	180.8	228.3	165.0	195.2	198.8	164.9	256.8	200.4	204.3	215.5	169.9	193.5	May "
ሰኔ 2002	203.6	213.0	174.3	234.1	168.5	195.9	186.1	175.7	267.0	206.2	202.7	203.0	172.7	200.0	June "
2003															2010/2011
ሐምሌ 2002	202.4	208.4	176.9	235.7	172.0	192.7	197.8	184.2	268.6	197.4	202.1	201.2	169.2	199.2	July 2010
ኦገስት 2002	200.2	203.5	177.4	237.1	170.1	194.2	193.5	204.8	263.7	216.7	203.7	197.3	170.9	198.2	August "
መስከረም 2003	200.6	194.8	179.5	241.2	177.1	211.1	207.0	274.6	273.6	214.0	201.8	200.3	177.9	195.6	September "
ጥቅምት 2003	202.0	192.1	181.2	239.0	176.7	225.9	232.0	284.9	271.7	174.5	217.5	205.9	173.9	201.6	October "
ኅዳር 2003	196.8	182.8	181.0	235.8	177.6	221.8	242.5	265.6	262.1	182.2	223.8	203.8	175.0	203.3	November "