

በኢትዮጵያ ፌዴራላዊ ዲሞክራሲያዊ ሪፐብሊክ  
 የማዕከላዊ ስታቲስቲክስ ኤጀንሲ

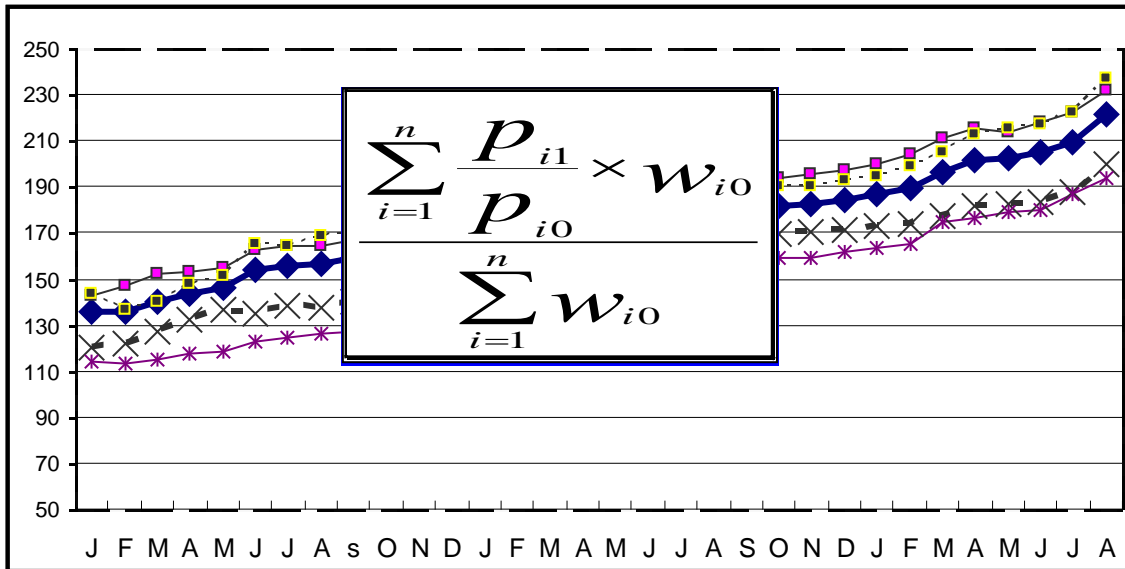
THE FEDERAL DEMOCRATIC REPUBLIC OF ETHIOPIA  
**CENTRAL STATISTICAL AGENCY**

የአገር አቀፍና የክልሎች የሽማግሌት ዋጋ መመዘኛ ኢንዱክሶች  
 የግንቦት ወር 2002 ዓ.ም.

[ታህሳስ 1999 = 100]

መረጃ ቁጥር 32

**COUNTRY AND REGIONAL LEVEL CONSUMER PRICE INDICES**



[December 2006 = 100]

For the month of May 2010

Information No. 32

አዲስ አበባ

ግንቦት 30 ቀን 2002 ዓ.ም.

ADDIS ABABA

07 June 2010

Tel: 251-11-1 553011

Fax: 251-11-1550334.

Email: csa@ethionet.et

# CONTENTS

	<b>Page</b>
Introduction.....	4
Inflation Rate.....	8
Comparison of CPI Movements, Current Vs Last Year's Similar Months, at country Level.....	10
Comparison of CPI Movements, Current Vs Last Year's Similar Months, at country and Regional Levels.....	11

## List of Tables

Table a: Number of Markets Covered and Basket of Commodities by Region.....	2
Table 1a: General Consumer Price Index and Its Components at Country Level.....	13
Table 1b: Consumer Price Index of Total Food and Its Components at Country Level.....	14
Table 1c: Consumer Price Index of House Rent, Construction Materials, Water, Fuel and Power and Its Components at Country Level.....	15
Table 2a: Summary of General Consumer Price Indices at Country and Regional Levels.....	16
Table 2b: Summary of Consumer Price Indices of Food at Country and Regional Levels.....	18
Table 3a: General Consumer Price Index and Its Components for the City of Addis Ababa Administration.....	20
Table 3b: Consumer Price Index of Total Food and Its Components for the City of Addis Ababa Administration.....	21
Table 4a: General Consumer Price Index and Its Components for the Afar Regional State.....	22
Table 4b: Consumer Price Index of Total Food and Its Components for the Afar Regional State.....	23
Table 5a: General Consumer Price Index and Its	

Components for the Amhara Regional State.....	24
Table 5b: Consumer Price Index of Total Food and Its Components for the Amhara Regional State.....	25
Table 6a: General Consumer Price Index and Its Components for the Benishangul-Gumuz Regional State.....	26
Table 6b: Consumer Price Index of Total Food and Its Components for the Benishangul-Gumuz Regional State.....	27
Table 7a: General Consumer Price Index and Its Components for the Dire Dawa Administrative Council.....	28
Table 7b: Consumer Price Index of Total Food and Its Components for the Dire Dawa Administrative Council.....	29
Table 8a: General Consumer Price Index and Its Components for the Gambela Peoples Regional State.....	30
Table 8b: Consumer Price Index of Total Food and Its Components for the Gambela Peoples Regional State.....	31
Table 9a: General Consumer Price Index and Its Components for the Harari Peoples Regional State.....	32
Table 9b: Consumer Price Index of Total Food and Its Components for the Harari Peoples Regional State.....	33
Table 10a: General Consumer Price Index and Its Components for the Oromia Regional State.....	34
Table 10b: Consumer Price Index of Total Food and Its Components for the Oromia Regional State.....	35
Table 11a: General Consumer Price Index and Its Components for the SNNP Regional State.....	36
Table 11b: Consumer Price Index of Total Food and Its Components for the SNNP Regional State.....	37
Table 12a: General Consumer Price Index and Its Components for the Somali Regional State.....	38
Table 12b: Consumer Price Index of Total Food and Its Components for the Somali Regional State.....	39
Table 13a: General Consumer Price Index and Its Components for the Tigray Regional State.....	40
Table 13b: Consumer Price Index of Total Food and Its Components for the Tigray Regional State.....	41

## **Introduction**

The Consumer Price Index (CPI) measures the average change in the price paid by consumers for a fixed market basket of goods and services. It is usually based on household expenditure weights of the goods and services in the basket and their current market prices. The twelve CPI's (i.e., the CPI's of the 11 Regions and the CPI at Country Level) presented in this report are based on the results of the Household Income, Consumption and Expenditure Survey (HICES) conducted by the Central Statistical Agency in 2004/2005 from which expenditure weights are derived for major household goods and services of that period and adjusted using the December 2006 retail prices of the goods and services as a base period.

The December 2006 based CPI updates the previous CPI series (i.e. December 2000 based) and the newly selected baskets are more diversified and the weights are more accurate. It also showed various improvements and incorporates non-food index as an independent group. The new series is constructed for country as a whole and Regional States including Dire Dawa and the Addis Ababa City Administration. However, similar indices had been utilized at Addis Ababa Level since 1963 and at Country, Urban and Rural Levels since 1995/96 and in Country and Regional level since 2000.

All the twelve general indices are divided into two major groups that is food and non-food index. The non-food index has ten major groups each, namely: Beverages; Cigarettes and Tobacco; Clothing and Footwear; House Rent, Construction Materials, Water, and Fuel and Power; Furniture, Furnishing, Household Equipment and Operation; Medical Care and Health; Transport and Communication; Recreation, Entertainment and Education; Personal Care and Effects; and Miscellaneous Goods and Services. On the other hand, the Food Index has 13 sub-groups. These are: Cereals; Pulses; Bread and Other Prepared Food; Meat; Milk, Cheese and Eggs; Vegetables and

Fruits; Oil and Fats Spices; Potatoes, Other Tubers and Stems; Coffee Beans (whole) and Tea Leaves; Other Food Items; Milling Charges; and Food taken Away from Home. Furthermore, the new CPI based on December 2006 includes more detailed #Housing, Construction materials, Water and Fuel and Power; components.

For the construction of the current consumer price indices, up to date data on retail prices are collected in the purposely selected sample market places located in representative urban centers in each zone/special weredas of the country. Hence, a total of 119 market places were selected for the retail price survey. In each market place an enumerator is assigned to undertaking the data collection activities. The price data is collected from the 1<sup>st</sup> day through 15<sup>th</sup> days of European Calendar month under consideration. To calculate the monthly regional consumer price indices, geometric means of prices of the specific regions are used. The distribution of the market place of each region and items included in the basket of commodities are given on Table A on page 2.

An important factor in constructing a Consumer Price Index is to select the representative basket of goods and services. Including all consumption items into the market basket of goods and services is both cumbersome and unnecessarily costly in term of data collection and processing. Furthermore, it doesn't make sense to include an insignificant weight into an index basket which could not move the price relative up or downwards compared to the general market trend. As a result, basket of goods and services included in the regional baskets are determined by expenditure cut-off point. The total numbers of items included in the regional basket in the December 2006 based indices are given in Table A on page 2.

Country level CPI aggregates the regional group indices and the contributions of the five relatively big regions in terms of the magnitude of the expenditure account for more than 95 percent. These regions are Oromiya, Amhara, SNNP, Addis Ababa and Tigray. On the other hand, the contributions of the remaining regions to the

Country Level Consumer Price Index is about five percent.

According to the weights for food and non-food groups in Table B below, the December 2006 based CPI is about 57 percent of household expenditure spent on the food component, which declined by 3 percentage points as compared to the December 2000 based CPI. On the other hand, the expenditure on non-food components increased from 40 percent to 43 percent. This indicates that the economic situation in the country is going in the right direction as postulated by economic theory. Similarly, in this period larger regions resulted in a substantial decrease in the average weights for food, despite the increased food taken out of home. It was offset mainly by an increase in housing, construction materials, water and fuel and power, furnishing and transport and communication.

**Table B: Major groups in the 2000 and 2006 based CPI and their weights at Country Level**

No.	Major Group	Weights	
		2000 based CPI	2006 based CPI
1	Food	0.6008	0.5701
2	Non-Food	0.3992	0.4299
3	Beverages	0.0201	0.0202
4	Cigarettes and Tobacco	0.0051	0.0048
5	Clothing and Footwear	0.0926	0.0832
6	House Rent, Construction Materials, Water and Fuel and Power	0.1544	0.2056
7	Furniture, Furnishing, Household Equipment and Operation	0.0494	0.0375
8	Medical Care and Health	0.0120	0.0111
9	Transport and Communication	0.0199	0.0249
10	Recreation, Entertainment and Education	0.0101	0.0109
11	Personal Care and Effects	0.0092	0.0083
12	Miscellaneous Goods	0.0264	0.0234
	<b>Total</b>	<b>1.000</b>	<b>1.000</b>

መግቢያ..... 1  
 የወሩ ዋጋ ግሽበት ሁኔታ ..... 7

የዘንድሮውና የአምናው ተመሳሳይ ወሮች የሽማግሌት ዋጋ መመዘኛ ጠቋሚ አህዝ  
 ንፅፅር በአገር አቀፍ ደረጃ ..... 10

የዘንድሮውና የአምናው ተመሳሳይ ወሮች የሽማግሌት ዋጋ መመዘኛ ጠቋሚ አህዝ  
 ንፅፅር በአገር አቀፍና በክልሎች ደረጃ..... 11

**የሠንጠረዦች ዝርዝር**

ሠንጠረዥ ሀ: በጥናቱ የተሸፈኑ ገበያዎችና በኢንዱስትሪ ማዕቀፍ የተካተቱ ዕቃዎችና  
 በዕቃዎች/አገልግሎቶች ብዛት በክልል..... 2

ሠንጠረዥ 1ሀ: ጠቅላላ የሽማግሌት ዋጋ መመዘኛ ኤንዱስትሪና በስሩ የተካተቱ  
 ክፍሎች በአገር አቀፍ ደረጃ..... 13

ሠንጠረዥ 1ለ: ጠቅላላ ምግብና የምግብ ክፍሎች የሽማግሌት ዋጋ መመዘኛ  
 ኤንዱስትሪ በአገር አቀፍ ደረጃ..... 14

ሠንጠረዥ 1ሐ: አገር አቀፍ የቤት ኪራይ፣ የቤት መስሪያ ዕቃዎች፣ ውሃና ኬነርጂ  
 የሽማግሌት ዋጋ መመዘኛ ኤንዱስትሪ ..... 15

ሠንጠረዥ 2ሀ: ጠቅላላ የሽማግሌት ዋጋ መመዘኛ ኤንዱስትሪ  
 በአገር አቀፍና በክልሎች ደረጃ ..... 16

ሠንጠረዥ 2ለ: የምግብ ዋጋ መመዘኛ ኤንዱስትሪ ማጠቃለያ በአገር አቀፍ  
 እና በክልሎች ደረጃ ..... 18

ሠንጠረዥ 3ሀ: ጠቅላላ የሽማግሌት ዋጋ መመዘኛ ኤንዱስትሪና በስሩ የተካተቱ  
 ክፍሎች ለአዲስ አበባ ከተማ መስተዳድር ..... 20

ሠንጠረዥ 3ለ: ጠቅላላ ምግብና የምግብ ክፍሎች የሽማግሌት ዋጋ መመዘኛ  
 ኤንዱስትሪ ለአዲስ አበባ ከተማ መስተዳድር ..... 21

ሠንጠረዥ 4ሀ: ጠቅላላ የሽማግሌት ዋጋ መመዘኛ ኤንዱስትሪና በስሩ የተካተቱ  
 ክፍሎች ለአፋር ክልላዊ መንግስት..... 22

ሠንጠረዥ 4ለ: ጠቅላላ ምግብና የምግብ ክፍሎች የሽማግሌት ዋጋ መመዘኛ  
 ኤንዱስትሪ ለአፋር ክልላዊ መንግስት..... 23

ሠንጠረዥ 5ሀ: ጠቅላላ የሽማግሌት ዋጋ መመዘኛ ኤንዱስትሪና በስሩ የተካተቱ  
 ክፍሎች ለአማራ ክልላዊ መንግስት..... 24

ሠንጠረዥ 5ለ: ጠቅላላ ምግብና የምግብ ክፍሎች የሽማግሌት ዋጋ መመዘኛ  
 ኤንዱስትሪ ለአማራ ክልላዊ መንግስት..... 25

ሠንጠረዥ 6ሀ: ጠቅላላ የሽማግሌት ዋጋ መመዘኛ ኤንዱስትሪና በስሩ የተካተቱ  
 ክፍሎች ለቤንሻንጉል-ጉሙዝ ክልላዊ መንግስት..... 26

ሠንጠረዥ 6ለ: ጠቅላላ ምግብና የምግብ ክፍሎች የሽማግሌት ዋጋ መመዘኛ  
 ለቤንሻንጉል-ጉሙዝ ክልላዊ መንግስት..... 27

ሠንጠረዥ 7ሀ: ጠቅላላ የሸማቾች ዋጋ መመዘኛ ኤንደክስና በስሩ የተካተቱ ክፍሎች ለድሬደዋ አስተዳደር ካውንስል .....	28
ሠንጠረዥ 7ለ: ጠቅላላ ምግብና የምግብ ክፍሎች የሸማቾች ዋጋ መመዘኛ ለድሬደዋ አስተዳደር ካውንስል .....	29
ሠንጠረዥ 8ሀ: ጠቅላላ የሸማቾች ዋጋ መመዘኛ ኤንደክስና በስሩ የተካተቱ ክፍሎች ለጋምቤላ ህዝቦች ክልላዊ መንግስት .....	30
ሠንጠረዥ 8ለ: ጠቅላላ ምግብና የምግብ ክፍሎች የሸማቾች ዋጋ መመዘኛ ለጋምቤላ ህዝቦች ክልላዊ መንግስት .....	31
ሠንጠረዥ 9ሀ: ጠቅላላ የሸማቾች ዋጋ መመዘኛ ኤንደክስና በስሩ የተካተቱ ክፍሎች ለለሐረሪ ህዝብ ክልላዊ መንግስት .....	32
ሠንጠረዥ 9ለ: ጠቅላላ ምግብና የምግብ ክፍሎች የሸማቾች ዋጋ መመዘኛ ኤንደክስ ለለሐረሪ ህዝብ ክልላዊ መንግስት .....	33
ሠንጠረዥ 10ሀ: ጠቅላላ የሸማቾች ዋጋ መመዘኛ ኤንደክስና በስሩ የተካተቱ ክፍሎች ለአሮሚያ ክልላዊ መንግስት .....	34
ሠንጠረዥ 10ለ: ጠቅላላ ምግብና የምግብ ክፍሎች የሸማቾች ዋጋ መመዘኛ ኤንደክስ ለአሮሚያ ክልላዊ መንግስት .....	35
ሠንጠረዥ 11ሀ: ጠቅላላ የሸማቾች ዋጋ መመዘኛ ኤንደክስና በስሩ የተካተቱ ክፍሎች ለደ.ኢ.ብ.ብ.ሀ ክልላዊ መንግስት .....	36
ሠንጠረዥ 11ለ: ጠቅላላ ምግብና የምግብ ክፍሎች የሸማቾች ዋጋ መመዘኛ ኤንደክስ ለደ.ኢ.ብ.ብ.ሀ ክልላዊ መንግስት .....	37
ሠንጠረዥ 12ሀ: ጠቅላላ የሸማቾች ዋጋ መመዘኛ ኤንደክስና በስሩ የተካተቱ ክፍሎች ለሶማሌ ክልላዊ መንግስት .....	38
ሠንጠረዥ 12ለ: ጠቅላላ ምግብና የምግብ ክፍሎች የሸማቾች ዋጋ መመዘኛ ኤንደክስ ለሶማሌ ክልላዊ መንግስት .....	39
ሠንጠረዥ 13ሀ: ጠቅላላ የሸማቾች ዋጋ መመዘኛ ኤንደክስና በስሩ የተካተቱ ክፍሎች ለትግራይ ክልላዊ መንግስት .....	38
ሠንጠረዥ 13ለ: ጠቅላላ ምግብና የምግብ ክፍሎች የሸማቾች ዋጋ መመዘኛ .....	41



**መግቢያ**

የሽማግሌዎች ዋጋ መመዘኛ ኢንዱክሽን ማለት ሽማግሌዎች ለተወሰኑ ዕቃዎችና አገልግሎቶች የከፈሉትን አማካይ የዋጋ ለውጥ ለመለካት የሚያገለግል ጠቋሚ አህዝ ነው። የዋጋ መመዘኛ ኢንዱክሽን አብዛኛውን ጊዜ መሠረት የሚያደርገው የቤተሰብ ገቢ፣ ቋጭ ወጪ ጥናት ወጤት በሆነው ቤተሰቦች በዕቃዎችና ግልጋሎቶች ለይ ባወጡት የመቶኛ ድርሻ መጠንና የወቅቱ የገበያ ዋጋ ላይ ነው። በዚህ ሪፖርት ውስጥ የተካተቱት 12 ኢንዱክሶች (የ11 ክልሎችና የአገር አቀፍ) መሠረት ያደረጉት የማዕከላዊ ታክቲክስ ኤጀንሲ በ1996/97 በጀት ዓመት በመላ አገሪቱ በናሙና በተቃዋሚ ቦ ያካሄደውን የቤተሰብ ገቢ፣ ፍጆታና ወጪ ጥናት ወጤት ነው።

ይህ ታህሳስ ወር 1999 ዓ.ምን መሠረት ያደረገው (ታህሳስ 1999=100) የሽማግሌዎች ዋጋ መመዘኛ ኢንዱክሽን በክልል ደረጃ ሲዘጋጅ በዓይነቱ ለሁለተኛ ጊዜ የተዘጋጀ ሲሆን በታህሣሥ 1993 ዓ.ም. መሠረት ያደረገውን የሽማግሌዎች መመዘኛ ኢንዱክሽን የሚተካ ነው። በአገር አቀፍ ደረጃ ከ1988 ጀምሮና በአዲስ አበባ ከተማ ደረጃ ደግሞ ከ1955 ዓ.ም ጀምሮ በየወሩ ተመሳሳይ ኢንዱክሶች እየተዘጋጁ ለተጠቃሚዎች ሲሰራጩ መቆየታቸው ይታወቃል። እነዚህ 12 የዋጋ መመዘኛ ኢንዱክሶች በአገሪቱ የሚገኙ 11 ክልሎችና የአገር አቀፍን ሪፖርት ጨምሮ የሚሸፍነው የዕቃዎችና የአገልግሎቶችን ክምችት በያዙ ሁለት ዋና ክፍሎች የተከፈሉ ናቸው እነሆ፡ - የምግብና ምግብ ነክ ያልሆኑ መመዘኛ ኢንዱክሶች ሲሆን ምግብ ነክ ያልሆኑ መመዘኛ ኢንዱክሽን እንደገና በ10 ንዑስ ክፍሎች ይከፈላል። እነዚህም መጠጥ፣ ሲጃራና ትምባሆ፣ ልብስና መጫሚያ፣ የቤት ኪራይ፣ የቤት መሥሪያ ዕቃዎች፣ ወሃና ኢነርጂ፣ የቤት ዕቃዎች፣ የቤት ማስገጫዎች፣ የቤት ቁሳቁስና የቤት ሠራተኛ ደመወዝ፣ ሕክምና፣ መጓጓዣና መገናኛ፣ መዝናኛና ትምህርት፣ የግል ንጽህናና የግል ቋሚ ዕቃዎች እንዲሁም ሌሎች ዕቃዎችና አገልግሎቶች ሲሆኑ የሁሉም ክፍሎች አጠቃላይ ወጤት የሚሆነው ደግሞ የጠቅላላ ዋጋዎች መመዘኛ ኢንዱክሽን ነው።

በሁሉም ክልሎች የጠቅላላ ዋጋ መመዘኛ ኢንዱክሶች ስሌት አብዛኛውን የመቶኛ ወጪ ድርሻ የሚይዘው የምግብ መመዘኛ ኢንዱክሽን ሲሆን በሁሉም የምግብ ዋጋ መመዘኛ ኢንዱክሶች ዋና ዋና ክፍሎች እህል፣ ጥራጥሬ፣ ዳቦና ሌሎች የተዘጋጁ ምግቦች፣ ሥጋ፣ ወተት፣ ዐይብና ዕንቁላል፣ ዘይትና ቅባቶች፣ አትክልትና ፍራፍሬ፣ ቅመማ ቅመም፣ ድንችና ሌሎች ሥራሥሮች፣ ያልተቆላ ቡናና ሻይ ቅጠል፣ ሌሎች ምግቦች፣ የማስፈጫ አገልግሎትና ከቤት ወጪ የተወሰዱ ምግቦች ናቸው።

ለዋጋ ኢንዱክሶቹ የተመረጡት ዕቃዎችና አገልግሎቶች የዋጋ መረጃ የሚሰበሰበው በየዞን/ በየልዩ ወረዳ በናሙና በተመረጡ ወካይ ከተሞች ውስጥ ባሉ የገበያ ቋዎች ነው። በመሆኑም ሽያጭንዳንዱ ዞን ሁለት ከተሞች (የገበያ ቦታዎች) የተመረጡ ሲሆን እንደዚሁም በሽያጭንዳንዱ ልዩ ወረዳ አንድ ከተማ (የገበያ ቦታ) በጥናቱ እንዲካተት ተደርጓል።

በእነዚህ ከተሞች ውስጥ ተመድበው ለሚሰሩ መረጃ ሰብሳቢዎች በየበጀት ዓመቱ መጨረሻ በመረጃ አሰባሰብ ዘዴው ላይ ስልጠና የሚሰጥ ሲሆን ለአሰባሰቡ የሚረዱ የመስክ መገልገያ መሣሪያዎች (ሚዛን፣ ሜተር ... ወዘተ) ይሰጣቸዋል። መሣሪያዎችን በመጠቀም በየወሩ የዋጋ መረጃዎችን ከነጋዴዎች ይሰበስባሉ። አንዳንድ ጊዜም አንድ በላተኛ ወይም ገዢ ከነጋዴ ሲገዛ ቢገኝና ለሥራው ተባባሪነቱን ካሳየ መረጃው ከርሱም ይሰበስባል። የችርቻሮ ዋጋ መረጃ የሚሰበስበው እንደ አወሮፓውያን ዘመን አቆጣጠር ወሩ በገባ ከ1ኛው ቀን አንስቶ አስከ 15ኛው ቀን ነው። የክልል ኢንዱስትሪ ለማስላት ለኢንዱስትሪ ለተመረጡት ዕቃዎችና አገልግሎቶች አማካይ የችርቻሮ ዋጋቸውን የጂኦሜትሪክ ሚን ዘዴ ጥቅም ላይ ወሎአል። የኢንዱስትሪ ሪፖርቱም በየወሩ ለተጠቃሚዎች በዚህ መልክ ይቀርባል።

የአገር አቀፍ የችርቻሮ ዋጋ መመዘኛ ኢንዱስትሪ የሚሰላው እያንዳንዱ ክልል ለአገር አቀፍ የቤተሰብ ወጪ ያለውን የመቶኛ ድርሻ መሠረት በማድረግ ነው። በመሆኑም ለአገር አቀፍ ኢንዱስትሪ ስሌት ከ95 በመቶ በላይ አስተዋጽኦ የሚያደርጉ ክልሎች በቅደም ተከተል አሮሚያ፣ አማራ፣ የደቡብ ብሔር ብሔረሰቦችና ሕዝቦች፣ አዲስ አበባና ትግራይ ሲሆኑ የተቀሩት ክልሎች በየወሩ ለሚታየው አገር አቀፍ የችርቻሮ ዋጋ መመዘኛ ኢንዱስትሪ ስሌት የሚኖራቸው አስተዋጽኦ ከአምስት በመቶ የማይበልጥ ነው።

ለችርቻሮ ዋጋ ጥናት በአጠቃላይ 119 የገበያ ታዎች የተመረጡ ሲሆን በእያንዳንዱ ክልል የተመረጡ የናሙና ገበያዎች ብዛትና በየኢንዱስትሪዎቻቸው ማዕቀፍ የተካተቱ ዕቃዎች/አገልግሎቶች ብዛት ከዚህ በታች ቀርቦአል።

ሠንጠረዥ ሀ: በጥናቱ የተሸፈኑ ገበያዎችና በኢንዱስትሪ ማዕቀፍ የተካተቱ ዕቃዎች/አገልግሎቶች ብዛት በክልል

**Table A: Number of Markets Covered and Basket of Commodities by Region**

ተራ ቁጥር	ክልል	የገበያ ቦታዎች ብዛት	በኢንዱስትሪ የተካተቱ ዕቃዎች/ አገልግሎቶች ብዛት		Region
			ታህሳስ 1993=100	ታህሳስ 1999=100	
1	ትግራይ	8	114	143	Tigray
2	አፋር	4	85	153	Afar
3	አማራ	20	118	144	Amhara
4	አሮሚያ	24	127	161	Oromia
5	ሶማሌ	6	85	122	Somalie
6	ቤኒሻንጉል ጉምዝ	6	111	142	Benishangul-Gumuz
7	ደ.ብ.ብ.ሀ	31	130	152	SNNP
8	ጋምቤላ	3	105	103	Gambela
9	ሐረሪ	2	102	158	Harari
10	አዲስ አበባ ከተማ	12	175	193	Addis Ababa City Administration
11	ድራዳዋ አስተዳደር ድምር	3	121	150	Dire Dawa Administrative Total
<b>Sr.No.</b>		<b>Number of Markets</b>	<b>Basket of Commodities</b>		
		<b>119</b>			

ለጠቋሚ አሀዙ ክንዋኔ ዋናው ነገር በጠቋሚ አሀዙ ማዕቀፍ ተካትተው በዋናነት የሚያገለግሉ ዕቃዎችና አገልግሎቶች የመምረጥ ጉዳይ ነው። ጠቋሚ አሀዞች የሚመሠረቱት በአጠቃላይ በናሙና በሚመረጡ ዕቃዎች ላይ ሲሆን በጠቋሚ አሀዙ ማዕቀፍ ውስጥ መካተት የሚገባው ዕቃ መወሰን ግን ሁሌም ቀላል የሚባል ተግባር አይደለም። የተለያዩ የአመራረጥ ዘዴ መጠቀም ቢቻልም የሚመረጡት ዕቃዎች ለረጅም ጊዜ የሚኖራቸው ተፈላጊነት፣ በአስተማማኝ ሁኔታ በገበያ ላይ የመገኘታቸው ጉዳይ፣ ሌሎችን ዕቃዎች የመወከል ብቃትና ከሌሎች ምርቶች ጋር ያላቸው ተወዳዳሪነት መሠረት ያደረገ እንዲሆን ይፈለጋል። በአጠቃላይ የተመረጡት ዕቃዎች በበቂ መጠን የመገኘታቸው ሁኔታ፣ በየወቅቱ ተወዳዳሪነታቸውና ዕቃዎችና አገልግሎቶች ምድቡን የመወከላቸው ብቃትን ማረጋገጥ ያስፈልጋል።

ታህሳስ 1999 ዓ.ም. መሠረት ያደረገው የሽማግሌት ዋጋ መመዘኛ ኢንዱስትሪ አይነቶችና እያንዳንዱ ዋና ክፍል ያለው የወጪ ድርሻ በገፅ 6 ላይ ይታያል። ይህ ሠንጠረዥ እንደሚያሳየው የምግብ የመቶኛ የወጪ ድርሻ ታህሳስ 1993 ዓ.ም. ከነበረው 60 በመቶ ወደ 57 በመቶ ቀንሷል። በአንጻሩ ደግሞ ምግብ ነክ ያልሆነ መመዘኛ ኢንዱስትሪ ታህሳስ 1993 ዓ.ም. ከነበረው 40 በመቶ የወጪ ድርሻ ወደ 43 በመቶ ከፍ ብሏል። ባጠቃላይ ስታይ በሁሉም ክልሎች ኢንዱስትሪ ላይ የምግብ የወጪ ድርሻ የማይናቅ ቅናሽ ያሳየ ሲሆን ምግብ ነክ ያልሆኑ የወጪ ድርሻ መጠነኛ እድገት አሳይቷል።

## የግንቦት ወር 2002 ዓ.ም. የዋጋ ግሽበት ሁኔታ

ከሠንጠረዥ #ሐ; መረዳት እንደሚቻለው በግንቦት ወር 2002 ዓ.ም. የተመዘገበው አገራዊ አጠቃላይ የዋጋ ግሽበት 2.4 በመቶ ሲሆን ይህ አሀዝ በግንቦት 2001 ከታየው 41.6 አጠቃላይ የዋጋ ግሽበት ጋር ሲነፃፀር በ39.2 ቅናሽ አሳይቷል። በተመሳሳይ ሁኔታ በግንቦት ወር 2002 ዓ.ም. የተመዘገበው አገራዊ የምግብ የዋጋ ግሽበት -5.7 በመቶ ሲሆን አገራዊ የምግብ ነክ ያልሆኑ የዋጋ ግሽበት ደግሞ 17.8 በመቶ ሆኗል። በግንቦት ወር 2002 ዓ.ም. የተመዘገበው -5.7 በመቶ የምግብ የዋጋ ግሽበት ከሚያዝያ 2001 ዓ.ም. ቅኝተው 52.56 በመቶ ጋር ሲነፃፀር በ58.3 ቅናሽ አሳይቷል። ለዚህም አገራዊ የምግብ የዋጋ ግሽበት መቀነስ ምክንያት የሆኑት የተለያዩ የምግብ ክፍሎች በተለይም ሴህል የዋጋ ኢንዱስትሪ ላይ ቅናሽ በመከሰቱ ነው።

የ12 ወራት የምግብና የአጠቃላይ ተንቀሳቃሽ አማካይ የዋጋ ግሽበት ከመጋቢት ወር 2001 ዓ.ም. ጀምሮ በቱቱይ ቅናሽ በማሳየት ላይ ይገኛል። ይኸውም በየካቲት ወር 2001 ዓ.ም. አጠቃላይ ተንቀሳቃሽ የዋጋ ግሽበቱ 46.1 የነበረ ሲሆን በመጋቢት ወር 2001 ዓ.ም. 45.2፣ በሚያዝያ ወር 2001 ዓ.ም. 44.3፣ በግንቦት ወር 2001 ዓ.ም. 41.6፣ በሰኔ ወር 2001 ዓ.ም. 36.4፣ በሐምሌ ወር 2001 ዓ.ም. 29.9፣ በነሐሴ ወር 2001 ዓ.ም. 24.1፣ በመስከረም ወር 2002 ዓ.ም. በ18.7፣ በጥቅምት ወር 2002 ዓ.ም. በ14.1፣ በኅዳር ወር 2002 ዓ.ም. በ10.6፣ በታህሳስ ወር 2002 ዓ.ም. በ8.5፣ በጥር ወር 2002 ዓ.ም. በ6.6፣ በየካቲት ወር 2002 ዓ.ም. በ5.0፣ በመጋቢት ወር 2002 ዓ.ም. ወደ 3.9፣ በሚያዝያ ወር 2002 ዓ.ም. ወደ 2.9 እና በግንቦት ወር 2002 ዓ.ም. ወደ 2.4 ዝቅ ብሎአል። በተመሳሳይ ሁኔታ የምግብ ተንቀሳቃሽ አማካይ የዋጋ ግሽበትም በየካቲት ወር 2001 ዓ.ም. ከነበረበት 61.1 በመጋቢት ወር 2001 ዓ.ም. ወደ 59.2፣ በሚያዝያ ወር 2001 ዓ.ም. 57.2፣ በግንቦት ወር 2001 ዓ.ም. 52.6፣ በሰኔ ወር 2001 ዓ.ም. 44.2፣ በሐምሌ ወር 2001 ዓ.ም. 34.2፣ በነሐሴ ወር 2001 ዓ.ም. 25.4፣ በመስከረም ወር 2002 ዓ.ም. 17.5፣ በጥቅምት ወር 2002 ዓ.ም. 11.0፣ በኅዳር ወር 2002 ዓ.ም. 6.1፣ በታህሳስ ወር 2002 ዓ.ም. 3.3፣ በጥር ወር 2002 ዓ.ም. ወደ 0.7፣ በየካቲት ወር 2002 ዓ.ም. -1.6፣ በመጋቢት ወር 2002 ዓ.ም. ወደ -3.3፣ በሚያዝያ ወር 2002 ዓ.ም. ወደ -4.9 እና በግንቦት ወር 2002 ወደ -5.7 ዝቅ ማለቱ ተረጋግጧል። የግንቦት ወር 2002 ዓ.ም. የምግብ ነክ ያልሆኑ የዋጋ ግሽበት ከሚያዝያ ወር 2001 ዓ.ም. ጋር ሲነፃፀር በ6.8 ዝቅ ብሎአል። ከቅርብ ጊዜ ጀምሮ የምግብ ክፍሎች ውስጥ ስህል በስተቀር ሌሎቹ መጠነኛ የዋጋ ጭማሪ በማስመዘገብ ላይ ይገኛሉ። በተለይም የበርበሬና ቅመማ ቅመም ዋጋ በፍጥነት በማሻቀብ ላይ ይገኛል። በተመሳሳይ ሁኔታ የምግብ ነክ ያልሆኑ የኢንዱስትሪ ክፍሎች ሙሉ በሙሉ ጭማሪ በማስመዘገብ ላይ ሲሆኑ በተለይ ነዳጅ፣ የኮንስትራክሽን ዕቃዎች፣ ልብስና መጫሚያ፣ የቤት ዕቃዎችና የቤት ማስገጫዎች እና የግል ንጽህና ዕቃዎች ዋጋ ጨምሮአል። በቅርቡ የታየው የዋጋ ጭማሪ ግን ካለፉት ዓመታት ከታየው ጭማሪ ጋር ሲነፃፀር የአሁኑ በጣም መቀነሱን ጠቋሚ አሃዙ ያመለክታል።

ሠንጠረዥ (መ) የሚያሳየው የዋጋ ግሽበት ሁኔታ ካለፈው ዓመት ተመሳሳይ ወር ጋር በማነፃፀር ነው። ከሠንጠረዥ መረዳት እንደሚቻለው የግንቦት ወር 2002 ዓ.ም. አጠቃላይ የዋጋ ግሽበት ካለፈው ዓመት ግንቦት ወር 2001 ዓ.ም. ጋር ሲነፃፀር በ7.4 በመቶ ከፍ ብሎአል። ለዚህ ጭማሪ ምክንያቱ በግንቦት ወር 2002 ዓ.ም. የተመዘገበው አጠቃላይ የዋጋ መመዘኛ ኢንዱስትሪ 181.3 በመቶ በግንቦት ወር 2001 ከተመዘገበው 168.8 በመቶ አጠቃላይ የዋጋ መመዘኛ ኢንዱስትሪ በልጦ በመገኘቱ ነው። የምግብ ዋጋ ግሽበት የግንቦት ወር 2002 ዓ.ም. ካለፈው ዓመት ከግንቦት ወር 2001 ዓ.ም. ጋር ሲነፃፀር በ0.1 በመቶ ጭማሪ አሳይቶአል። ለዚህ ዕድገት ምክንያቱ በግንቦት ወር 2002 ዓ.ም. የተመዘገበው የምግብ ዋጋ መመዘኛ ኢንዱስትሪ 185.7 በመቶ በግንቦት ወር 2001 ዓ.ም. ከተመዘገበው 185.6 በመቶ የምግብ ዋጋ መመዘኛ ኢንዱስትሪ በልጦ በመገኘቱ ነው። የምግብ ነክ ያልሆኑ የኢንዱስትሪ ክፍሎች የዋጋ ግሽበት የግንቦት ወር 2002 ዓ.ም. ካለፈው ዓመት ግንቦት ወር 2001 ዓ.ም. ጋር ሲነፃፀር የ19.8 በመቶ ጭማሪ አሳይቷል።

## May 2010 Inflation Rate

As it is indicated in Table 'C' below the country level overall inflation rate (annual change based on 12 months Moving Average) stood at 2.4 percent in May 2010. This rate is 39.2 percentage points lower than the corresponding annual average rate of 41.6 percent at May 2009. Similarly, the country level food inflation rate stood at -5.7 percent and the country level Non-food inflation rate stood at 17.8 percent in May 2010. The -5.7 percent Country level food inflation rate in May 2010 is 58.3 percentage points lower than that of 52.6 percent inflation rate at May 2009. This decrease in the Food inflation rate was due to the decline in price indices of the Food components, mainly Cereals.

The 12 months moving average General and Food inflation showed a decline starting in March 2009 and continued the trend in April 2010. In this regard, the General moving average inflation rate was 46.1 in February 2009 and consequently declined to 45.2 percent in March 2009, 44.3 in April 2009, 41.6 in May 2009, 36.4 percent in June 2009, 29.9 percent in July 2009, 24.1 percent in August 2009, 18.7 percent in September 2009, 14.1 percent in October 2009, and 10.6 percent in November 2009, 8.5 percent in December 2009, 6.6 percent in January 2010, 5.0 percent in February 2010, 3.9 percent in March 2010, 2.9 percent in April 2010 and 2.4 percent in May 2010. In a similar way, the Food moving average inflation rate was declined from 61.1 percent in February 2009 to 59.2 percent in March 2009, 57.2 percent in April 2009, 52.6 percent in May 2009, 44.2 in June 2009, 34.2 percent in July 2009, 25.4 percent in August 2009, 17.5 percent in September 2009, 11.0 percent in October 2009, 6.1 percent in November 2009, 3.3 percent in December 2009, 0.7 percent in January 2010, -1.6 percent in February 2010, -3.3 percent in March 2010, -4.9 percent in April 2010 and -5.7 percent in May 2010. The Moving Average Inflation rate of Non-food components has decreased by 6.8 percentage points as compared to the one observed in May 2009. In the recent months, except for Cereals, all the other food components have shown a rise in their indices. Specially, the index of pepper whole and Spices is rapidly rising. Among the non-food components almost all of them are increasing; specially, the prices of Fuel, Construction materials, Clothing and Footwear, Furniture and Furnishing and Personal care and effects are on the rise.

Table (D) shows Inflation rate based on last year's similar month comparison. As can be seen from the table the May 2010 General year-on-year inflation has increased by 7.4 percent as compared to the one observed in May 2009. The 7.4 percent rise in General inflation rate is due to the fact that the General Consumer Price Index (CPI) of 181.3 percent observed in May 2010 was higher than the corresponding 168.8 percent General Consumer Price Index (CPI) observed in May 2009. The year-on-year Food inflation increased by 0.1 percent in May 2010 as compared to the one observed in May 2009. The reason for the decline in the food Inflation rate was that the 185.7 percent Food Consumer price Index (CPI) observed in May 2010 was higher than the corresponding 185.6 percent Food Consumer Price Index (CPI) observed in May 2009. However, the Non-Food inflation increased by 19.8 percent in May 2010 as compared to the one observed in May 2009.

ሠንጠረዥ ሐ: በአገር አቀፍ ደረጃ የዋጋ ግሽበት ሁኔታ

Table C: The Country Level General Inflation Rate

በጀት ዓመት (ወር)	የዋጋ ግሽበት ሁኔታ			Budget Year and months
	አጠቃላይ የዋጋ ግሽበት	የምግብ የዋጋ ግሽበት	የምግብ ነክ ያልሆኑ የዋጋ ግሽበት	
<b>በጀት ዓመት በወራት</b>				<b>Budget Year in Months</b>
<b>ዓመታዊ አማካይ (ሐምሌ 1999 - ሰኔ 2000)</b>	<b>18.4</b>	<b>23.6</b>	<b>11.6</b>	<b>Annual Average (July 2007 - June 2008)</b>
<b>ዓመታዊ አማካይ (ሐምሌ 2000 - ሰኔ 2001)</b>	<b>40.6</b>	<b>54.1</b>	<b>21.0</b>	<b>Annual Average (July 2008 - June 2009)</b>
ግንቦት 2001	41.6	52.6	24.6	May 2009
ሰኔ 2001	36.4	44.2	23.7	June 2009
ሐምሌ 2001	29.9	34.2	22.9	July 2009
ነሐሴ 2001	24.1	25.4	21.8	August 2009
መስከረም 2002	18.7	17.5	20.9	September 2009
ጥቅምት 2002	14.1	11.0	19.9	October 2009
ኅዳር 2002	10.6	6.1	18.9	November 2009
ታህሳስ 2002	8.5	3.3	18.2	December 2009
ጥር 2002	6.6	0.7	17.8	January 2010
የካቲት 2002	5.0	-1.6	17.6	February 2010
መጋቢት 2002	3.9	-3.3	17.7	March 2010
ሚያዝያ 2002	2.9	-4.9	17.7	April 2010
ግንቦት 2002	2.4	-5.7	17.8	May 2010
<b>Budget Year</b>	<b>Inflation Rate</b>			
	<b>Overall Inflation rate</b>	<b>Food Inflation rate</b>	<b>Non-food Inflation rate</b>	

Note: General and Food Inflation figures for February 2010 are revised.

**ሠንጠረዥ መ: የዘንድሮውና የአምናው ተመሳሳይ ወሮች የሽማግሌት ዋጋ መመዘኛ ኢንዱስትሪ ለውጥ ንፅፅር በአገር አቀፍ ደረጃ ማጠቃለያ**

**Table D: Summary of Comparison of CPI Movements, Current vs. Last year's Similar Months at Country Level**

በጀት ዓመት (ወር)	የዋጋ ግሽበት ሁኔታ ካለፈው ዓመት ተመሳሳይ ወር ጋር ሲነፃፀር			Budget Year and months
	አጠቃላይ የዋጋ ግሽበት	የምግብ የዋጋ ግሽበት	የምግብ ነክ ያልሆኑ የዋጋ ግሽበት	
<b>በጀት ዓመት በወራት</b>				<b>Budget Year in Months</b>
ዓመታዊ አማካይ (ሐምሌ 1999 - ሰኔ 2000)	<b>24.9</b>	<b>34.2</b>	<b>12.3</b>	<b>Annual Average (July 2007 - June 2008)</b>
ዓመታዊ አማካይ (ሐምሌ 2000 - ሰኔ 2001)	<b>38.7</b>	<b>48.6</b>	<b>24.1</b>	<b>Annual Average (July 2008 - June 2009)</b>
ግንቦት 2001	14.2	11.6	18.7	May 2009
ፀሰኔ 2001	2.7	-3.4	15.0	June 2009
ሐምሌ 2001	-3.7	-12.4	15.4	July 2009
ነሐሴ 2001	-3.9	-12.8	15.3	August 2009
መስከረም 2002	-4.1	-13.6	16.6	September 2009
ጥቅምት 2002	-3.7	-12.7	14.8	October 2009
ኅዳር 2002	0.6	-8.0	17.2	November 2009
ታህሳስ 2002	7.1	0.6	18.3	December 2009
ጥር 2002	7.6	0.4	20.3	January 2010
የካቲት 2002	7.1	-0.2	19.8	February 2010
መጋቢት 2002	7.4	-0.1	20.4	March 2010
ሚያዝያ 2002	6.8	-0.8	19.8	April 2010
ግንቦት 2002	7.4	0.1	19.8	May 2010
<b>Budget Year</b>	<b>Inflation Rate based on last year's similar month comparison</b>			
	<b>Overall Inflation rate</b>	<b>Food Inflation rate</b>	<b>Non-food Inflation rate</b>	

Note: General and Food Inflation figures for February 2010 are revised.

**የዘንድሮውና የአምናው ተመሳሳይ ወሮች የችርቻሮ ዋጋ መመዘኛ ጠቋሚ አህዝ  
ንፅፅር በአገር አቀፍ ደረጃ**

**Comparison of CPI Movements, Current vs Last year's Similar Months at Country Level**

ከሠንጠረዥ 1(ሀ) መረዳትንደሚቻለው የግንቦት ወር 2002 ዓ.ም የአገር አቀፍ ጠቅላላ የችርቻሮ ዋጋ ኢንዱክስ ከግንቦት ወር 2001 ዓ.ም ጠቅላላ ኢንዱክስ ጋር ሲነፃፀር በ7.4 ከመቶ ጭማሪ አሳይቶአል። ለዚህ ጭማሪ ምክንያት የሆኑት ምግብ በ0.1 ከመቶ፣ መጠጥ በ6.5 ከመቶ፣ ሲጋራና ትምባሆ 18.3 ከመቶ፣ ልብስና መጫሚያ በ25.7 ከመቶ፣ የቤት ኪራይ፣ የቤት መሥሪያ ዕቃዎች፣ ዉሃና ኢነርጂ በ18.7 ከመቶ፣ የቤት ዕቃዎች፣ ቤት ማስገጫዎች፣ የቤት ቁሳቁስና የቤት ሠራተኛ ደመወዝ በ20.5 ከመቶ፣ ህክምና 16.9 ከመቶ፣ ትራንስፖርትና መገናኛ በ30.6 ከመቶ፣ መዝናኛና ትምህርት በ14.3 ከመቶ፣ የግል ንጽህናና የግል ቋሚ ዕቃዎች በ25.9 ከመቶ እና ሌሎች ዕቃዎች በ 9.0 ከመቶ በየኢንዱስትሪው ላይ ጭማሪ በማሳያቸው ነው።

The May 2010 Country Level Consumer Price Index has increased by 7.4 percent as compared to May 2009 (Table 1(a)). This increase in the General Consumer Price Index is attributed to the rise observed in the indices of Food by 0.1 percent, Beverages by 6.5 percent, Cigarettes and Tobacco by 18.3 percent, Clothing and Footwear by 25.7 percent, House Rent, Construction Materials, Water and Fuel and Power by 18.7 percent, Furniture, Furnishings, Household Equipment and Operation by 20.5 percent, Medical Care and Health by 16.9 percent, Transport and Communication by 30.6 percent, Recreation, Entertainment and Education by 14.3 percent, Personal Care Effects by 25.9 percent and Miscellaneous Goods by 9.0 percent .

ሠንጠረዥ 1(ለ) እንደሚያሳየው ለጠቅላላ ምግብ ኢንዱክስ 0.1 ከመቶ መጨመር ምክንያት የሆኑት የምግብ ክፍሎች ማለትም በሌላ በኩል ጥራጥራ በ2.8 ከመቶ፣ ጃሳና ሌሎች የተዘጋጁ ምግቦች በ4.3 ከመቶ፣ ሥጋ በ9.0 ከመቶ፣ ወተት፣ አይብና ዕንቁላል በ10.9 ከመቶ፣ ዘይትና ቅባቶች በ6.0 ከመቶ፣ ቅመማ ቅመም በ80.8 ከመቶ፣ ያልተቀላ ቡናና ሻይ ቅጠል በ22.1 ከመቶ፣ ሌሎች ምግቦች በ9.8 ከመቶ፣ የማስፈጫ አገልግሎት በ24.3 ከመቶ እና ከቤት ዉጪ የተወሰዱ ምግቦች በ15.7 ከመቶ ዕድገት በየኢንዱስትሪው ላይ አሳይተዋል። በሌላ በኩልም በ14.3 ከመቶ፣ አትክልትና ፍሬ-ፍሬ በ8.6 ከመቶና ድንችና ሌሎች ስራ ስሮች በ1.9 ከመቶ በየኢንዱስትሪው ላይ ቅናሽ አሳይተዋል።

The 0.1 percent increase in the Food index was observed due to the rise in the indices of the components of Food index (Table 1(b)) namely: Pulses (2.8 percent), Bread and Other Prepared Food (4.3 percent), Meat (9.0 percent), Milk, Cheese and Eggs (10.9 percent), oils and Fats (6.0 percent), Spices by (80.8 percent), Coffee and Tea Leaves (22.1 percent), other Food Items (9.8 percent), Milling Charge by (24.3 percent), and Food Taken Away from Home (15.7 percent) respectively. On the other hand, declines were observed in the indices of Cereals by (14.3 percent,) Vegetables and fruits (8.6 percent), and Potatoes, Other Tubers and Stems (1.9 percent).

ሠንጠረዥ (መ) የሚያሳየው የዋጋ ግሽበት ሆኔ ካለፈው ዓመት ተመሳሳይ ወር ጋር በማነፃፀር ነው። ከሠንጠረዥ መረዳት እንደሚቻለው የግንቦት ወር 2002 ዓ.ም አጠቃላይ የዋጋ ግሽበት ካለፈው ዓመት ግንቦት ወር 2001 ዓ.ም ጋር ሲነጻጸር በ7.4 ከመቶ ከፍ ብሎአል። ለዚህ ጭማሪ ምክንያቱ በግንቦት ወር 2002 ዓ.ም የተመዘገበው አጠቃላይ የዋጋ መመዘኛ ኢንዱክስ 181.3 ከመቶ በግንቦት ወር 2001 ከተመዘገበው 168.8 ከመቶ አጠቃላይ የዋጋ መመዘኛ ኢንዱክስ በልጦ በመገኘቱ ነው። የምግብ ዋጋ ግሽበት የግንቦት ወር 2002 ዓ.ም ካለፈው ዓመት ከግንቦት ወር 2001 ዓ.ም ጋር ሲነጻጸር በ0.1 ከመቶ ጭማሪ አሳይቶአል። ለዚህ ዕድገት ምክንያቱ በግንቦት ወር 2002 ዓ.ም የተመዘገበው የምግብ ዋጋ መመዘኛ ኢንዱክስ 185.7 ከመቶ በግንቦት ወር 2001 ዓ.ም ከተመዘገበው 185.6 ከመቶ የምግብ ዋጋ መመዘኛ ኢንዱክስ በልጦ በመገኘቱ ነው። ምግብ ነክ ያልሆኑ የኢንዱክስ ክፍሎች የዋጋ ግሽበት የግንቦት ወር 2002 ዓ.ም ካለፈው ዓመት ግንቦት ወር 2001 ዓ.ም ጋር ሲነጻጸር የ19.8 በመቶ ጭማሪ አሳይቶአል።

Table (D) shows Inflation rate based on last year's similar month comparison. As can be seen from the table the May 2010 General year-on-year inflation has increased by 7.4 percent as compared to the one observed in May 2009. The 7.4 percent rise in General inflation rate is due to the fact that the General Consumer Price Index (CPI) of 181.3 percent observed in May 2010 was higher than the corresponding 168.8 percent General Consumer Price Index (CPI) observed in May 2009. The year-on-year Food inflation increased by 0.1 percent in May 2010 as compared to the one observed in May 2009. The reason for the decline in the food Inflation rate was that the 185.7 percent Food Consumer price Index (CPI) observed in May 2010 was higher than the corresponding 185.6 percent Food Consumer Price Index (CPI) observed in May 2009. However, the Non-Food inflation increased by 19.8 percent in May 2010 as compared to the one observed in May 2009.



**ሐዘንድሮውና የአምናው ተመሳሳይ ወሮች**  
**የችርቻሮ ዋጋ መመዘኛ ጠቋሚ አሀዝ ንፅፅር በአገር አቀፍና በክልሎች ደረጃ**  
 Comparison of CPI Movements, Current vs Last year at Country and Regional Levels

ከሠንጠረዥ 2(ሀ) መረዳትን ያደራጃለው የግንቦት ወር 2002 ዓ.ም የአገር አቀፍ ጠቅላላ የችርቻሮ ዋጋ መመዘኛ ኢንዱክስ ከግንቦት ወር 2001 ዓ.ም ጠቅላላ ኢንዱክስ ጋር ሲነፃፀር በ7.4 ከመቶ ጭማሪ አሳይቶአል። ለዚህ ጭማሪ አስተዋጽኦ ያደረጉት አዲስ አበባ 12.7 ከመቶ፣ አፋር 19.3 ከመቶ፣ አማራ 7.6 ከመቶ፣ ድሬዳዋ 6.0 ከመቶ፣ ሐረሪ 9.9 ከመቶ፣ ኦሮሚያ 5.8 ከመቶ፣ ደቡብ ብሄሮች ብሄረሰቦችና ሕዝቦች 6.3 ከመቶ፣ ሶማሌ 8.2 ከመቶ እና ትግራይ 9.9 ከመቶ በኢንዱክሶቻቸው ላይ ጭማሪ በማሳየታቸው ነው። በሌላ በኩል ቤኔሻንጉል ጉሙዝ በ2.6 ከመቶ እና ጋምቤላ 0.7 ከመቶ በኢንዱክሶቻቸው ላይ ቅናሽ አሳይተዋል።

Table 2(a) also displays that the May 2010 Country level General Consumer Price Index has increased by 7.4 percent as compared to May 2009. This increase was attributed to the rise in the indices of its constituent regions; namely: Addis Ababa 12.7 percent, Afar 19.3 percent, Amhara 7.6 percent, Dire Dawa 6.0 percent, Harari 9.9 percent, Oromia 5.8 percent, SNNP by 6.3 percent, Somali 8.2 percent and Tigray 9.9 percent. On the other hand, the indices of Benishangul Gumuz and Gambella have declined by 2.6 percent and 0.7 percent respectively.

ሠንጠረዥ 2(ለ) እንደሚያሳየው አገር አቀፍ ጠቅላላ የምግብ ዋጋ መመዘኛ ኢንዱክስ 0.1 ከመቶ መጨመር ምክንያት የሆኑት አዲስ አበባ በ6.4 ከመቶ፣ አፋር በ13.4 ከመቶ፣ አማራ በ1.8 ከመቶ፣ ድሬዳዋ በ2.7 ከመቶ፣ ሐረሪ በ7.7 ከመቶ፣ ሶማሌ በ2.6 ከመቶ እና ትግራይ 4.8 ከመቶ በምግብ ኢንዱክሶቻቸው ላይ ጭማሪ በማሳየታቸው ነው። በሌላ በኩል ቤኔሻንጉል ጉሙዝ በ12.7 ከመቶ፣ ጋምቤላ በ8.7 ከመቶ፣ ኦሮሚያ 1.3 ከመቶ እና ደቡብ ብሄሮች፣ ብሄረሰቦችና ሕዝቦች በ3.4 ከመቶ በኢንዱክሶቻቸው ላይ ቅናሽ አሳይተዋል።

Table 2(b) reveals that the 0.1 percent increase in the country level Food index was observed due to the rise in the indices of the regions namely: Addis Ababa 6.4 percent, Afar 13.4 percent, Amhara 1.8 percent, Dire Dawa 2.7 percent, Harari 7.7 percent and Somali 2.6 percent, and Tigray 4.8 percent. On the other hand, declines were observed in the indices of Benishangul Gumuz 12.7 percent, Gambella 8.7 percent, Oromia 1.3 percent and SNNP 3.4 percent.

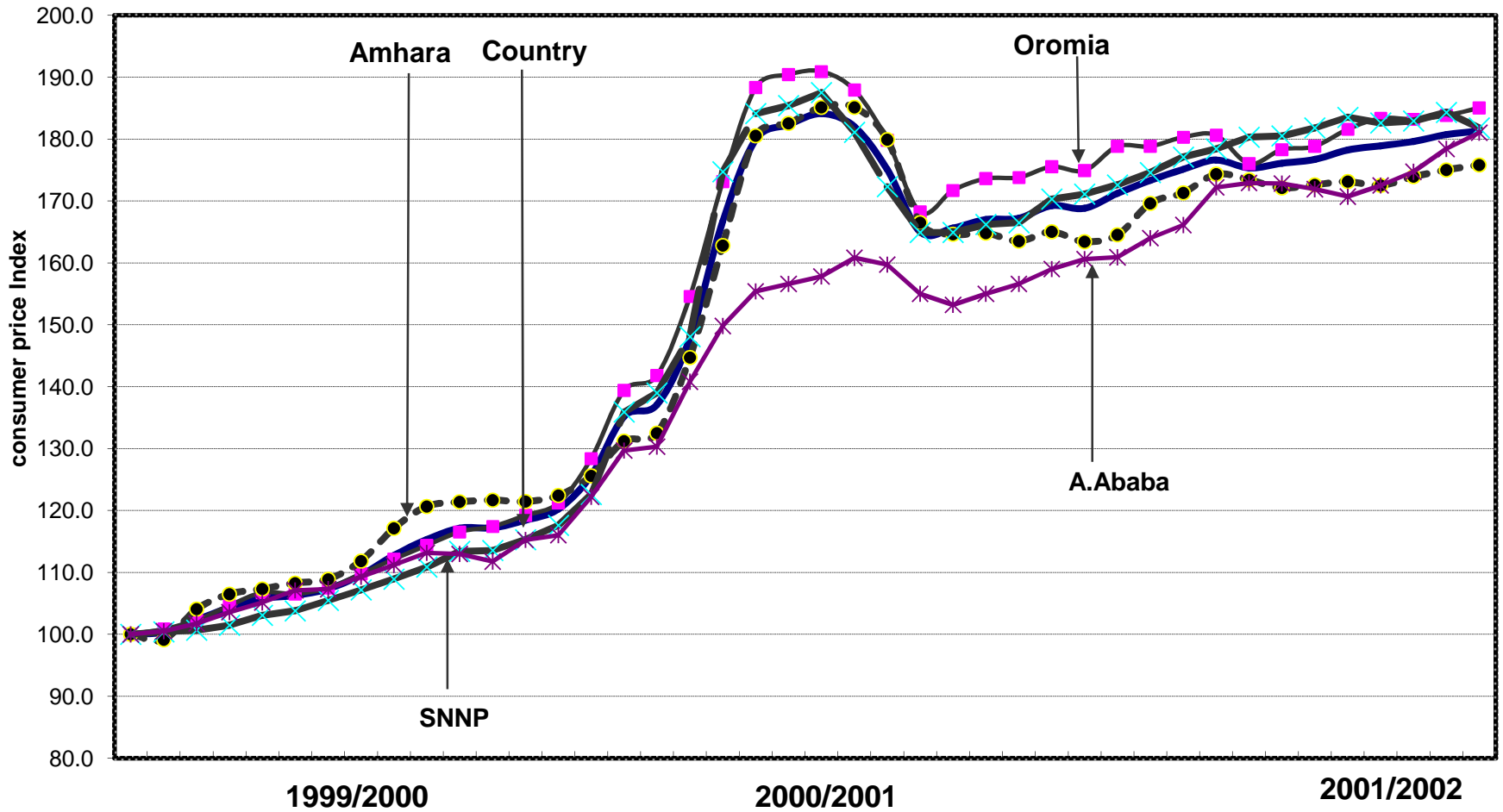
# General CPI for Country Level and Major Regions

የሽማቾች ዋጋ ኢንዱክሽን ለአገር አቀፍና ለዋና ዋና ክልሎች  
2008/2009

2007/2008

2009/2010

D J F M A M J J A S O N D J F M A M J J A S O N D J F M A M



የሽማቾች ዋጋ መመዘኛ ኢንዱክሽን

ሠንጠረዥ 1ሀ፡- ጠቅላላ የ ሽግግር ዋጋ መመዘኛ ኢንዱስትሪ ቢሮ የተካተቱ ክፍሎች በአገር አቀፍ ደረጃ

ታህሳስ 1999 = 100

Table 1a: General Consumer Price Index and Its Components at Country Level

December 2006 = 100

ወርና ዓመት	ጠቅላላ ኢንዱስትሪ	ጠቅላላ የምግብ ኢንዱስትሪ	ጠቅላላ የምግብ ክፍል	Non-food Consumer Price Index Components											Month and Year
				መጠጥ	ሲጃራና ትምብዖ	ልብስና መጫጫያ	የቤት ኪራይና ስቃይት+ውሃና ነጻጅናሃይል	የቤት ስቃይት የቤት ግንባታዎች የቤት ቁሳቁስና የቤት ሠራተኞች ደመወዝ	ሕክምና	ትራንስፖርትና መገናኛ	መዝናኛና ትምህርት	የግል ገደብና የግል ቋጫ ስቃይት	ሌሎች ስቃይት		
General Index	Food Total	Non-Food Total	Beverages	Cigarettes and Tobacco	Clothing and Footwear	House Rent, Construction Materials, Water, and Fuel and Power	Furniture, Furnishings, Household Equipment and Operation	Medical Care and Health	Transport and Communication	Recreation, Entertainment and Education	Personal Care and Effects	Miscellaneous Goods			
ታህሳስ 1999	100.0	100.0	100.0	100.0	100.0	100.0	100.0	100.0	100.0	100.0	100.0	100.0	100.0	December 2006	
ሐምሌ 1999 - ሰኔ 2000	126.9	137.2	113.3	113.5	107.8	117.0	112.0	125.5	111.9	105.3	106.9	112.6	104.7	July 2007 - June 2008	
ሐምሌ 2000 - ሰኔ 2001	173.1	198.0	140.1	175.8	141.2	149.8	136.6	159.8	128.2	112.8	124.9	142.2	115.5	July 2008 - June 2009	
2001														2008/2009	
ግንቦት 2001	168.8	185.6	146.4	178.9	154.9	162.8	140.6	169.3	136.1	111.3	131.7	153.2	119.6	May "	
ሰኔ 2001	171.2	188.6	148.0	181.3	157.1	165.7	141.2	170.3	139.7	115.5	133.2	158.8	120.8	June "	
2002														2009/2010	
ሐምሌ 2001	173.3	189.8	151.5	182.8	159.4	169.5	144.6	174.6	140.2	121.7	136.7	163.0	121.9	July 2009	
ክሐሴ 2001	175.1	190.4	154.8	184.4	158.0	173.6	148.4	177.8	139.5	123.2	138.9	166.3	124.7	August "	
መስከረም 2002	176.6	190.5	158.1	185.0	157.5	176.4	152.8	180.7	141.0	127.5	141.6	170.8	125.1	September "	
ጥቅምት 2002	175.3	186.9	159.9	186.0	160.6	179.0	154.6	181.2	143.2	129.7	142.0	172.5	125.5	October "	
ዳር 2002	176.1	185.9	163.1	185.0	162.6	184.2	157.5	185.3	144.2	135.7	140.8	180.6	124.9	November "	
ታህሳስ 2002	176.7	185.5	165.0	186.2	160.9	184.6	160.0	189.2	147.8	136.9	144.3	182.9	124.9	December "	
ጥር 2002	178.2	186.0	167.9	187.7	165.7	191.3	161.7	192.4	151.4	138.5	145.9	186.0	126.7	January 2010	
የካቲት 2002	178.9	185.7	169.8	186.1	172.0	196.1	162.9	196.3	153.0	138.0	145.1	189.3	126.8	February "	
መጋቢት 2002	179.6	185.6	171.7	186.5	181.7	198.4	164.5	199.9	155.9	137.7	147.8	190.3	128.4	March "	
ሚያዝያ 2002	180.7	186.2	173.3	189.0	186.1	199.3	166.1	201.8	157.1	142.2	149.0	191.1	127.8	April "	
ግንቦት 2002	181.3	185.7	175.4	190.5	183.2	204.7	166.9	204.1	159.1	145.3	150.5	193.0	130.4	May "	

ጠቅላላ ጽሑፍ ለጠቅላላ የግብርና ሚኒስቴር ለግብርና ሚኒስቴር ለግብርና ሚኒስቴር

ታህሳስ 1999 = 100

Table 2a: Summary of General Consumer Price Indices at Country and Regional Levels

December 2006=100

ወርና ዓመት	Reporting Level												Month and Year	
	Eth.	A.A.	Afar	Amhara	B.Gumuz	D.Dawa	Gambela	Harari	Oromia	SNNP	Somalia	Tigray		
ታህሳስ 1999	100.0	100.0	100.0	100.0	100.0	100.0	100.0	100.0	100.0	100.0	100.0	100.0	100.0	December 2006
ሐምሌ 1999 - ሰኔ 2000	126.9	121.8	124.3	127.8	137.7	125.6	123.7	119.1	129.0	125.6	118.5	130.1		July 2007 - June 2008
ሐምሌ 2000 - ሰኔ 2001	173.1	157.6	158.3	172.1	193.9	167.6	193.2	169.5	179.5	173.9	170.8	183.0		July 2008 - June 2009
2001														2008/2009
ግንቦት 2001	168.8	160.6	156.8	163.4	184.4	169.7	186.2	170.6	174.9	171.1	173.5	173.1		May "
ሰኔ 2001	171.2	160.9	158.7	164.5	188.3	170.5	191.6	174.7	178.8	172.6	179.5	175.8		June "
2002														2009/2010
ሐምሌ 2001	173.3	164.0	161.5	169.6	198.5	171.3	197.8	177.4	178.8	174.7	178.8	180.2		July 2009
ክሐረ 2001	175.1	166.1	165.3	171.3	199.6	173.9	200.7	176.0	180.3	177.1	176.5	182.6		August "
መስከረም 2002	176.6	172.2	173.7	174.3	199.5	175.3	193.9	175.5	180.6	178.4	181.1	181.3		September "
ጥቅምት 2002	175.3	172.9	176.0	173.4	191.5	175.2	185.6	179.7	176.0	180.3	185.2	185.8		October "
ዳረ 2002	176.1	172.8	179.9	172.1	190.8	174.3	183.8	175.6	178.3	180.5	181.7	184.5		November "
ታህሳስ 2002	176.7	171.9	180.1	172.6	192.8	173.7	182.1	179.8	178.8	181.8	183.0	183.8		December "
ጥር 2002	178.2	170.7	180.6	173.1	185.6	176.4	183.6	181.5	181.8	183.5	185.0	182.9		January 2010
ፍቅርት 2002	178.9	172.5	183.2	172.5	182.6	176.2	183.7	182.1	183.3	182.6	191.0	182.8		February "
መጋቢት 2002	179.6	174.8	182.1	173.9	177.0	178.9	181.5	186.3	183.2	182.9	188.7	185.8		March "
ግብርን 2002	180.7	178.4	186.7	175.0	179.5	179.3	181.1	185.0	183.8	184.3	187.6	187.6		April "
ግንቦት 2002	181.3	181.0	187.0	175.8	179.6	179.8	184.9	187.5	185.0	181.8	187.7	190.2		May "

ሠንጠረዥ 3 ሀ:- ጠቅላላ የሽግግር ዋጋ መመዘኛ ኢንዱስትሪ ቢሥሩ የተካተቱ ክፍሎች ለአዲስ አበባ ከተማ መስተዳድር

ታህሳስ 1999 = 100

Table 3a: General Consumer Price Index and Its Components for Addis Ababa City Administration

December 2006 = 100

ወርና ዓመት	ጠቅላላ ኢንዱስትሪ	ጠቅላላ የምግብ ኢንዱስትሪ	ጠቅላላ የምግብ ክፍል የልሆኑ ኢንዱስትሪ	Non-food Consumer Price Index Components											Month and Year
				መጠጥ	ሲጃራና ትምባሆ	ልብና መጫጫያ	የቤት ኪራይና የቤት መሥሪያ ስቃዎች+ውሃና ነጻጅናሃይል	የቤት ስቃዎች የቤት ግንባራዎች የቤት ቁሳቁስና የቤት ሠራተኞች ደመወዝ	ሕክምና	ትራንስፖርትና መገናኛ	መዝናኛና ትምህርት	የግል ገደብና የግል ቋጫ ስቃዎች	ሌሎች ስቃዎች		
General Index	Food Total	Non-Food Total	Beverages	Cigarettes and Tobacco	Clothing and Footwear	House Rent, Construction Materials, Water, and Fuel and Power	Furniture, Furnishings, Household Equipment and Operation	Medical Care and Health	Transport and Communication	Recreation, Entertainment and Education	Personal Care and Effects	Miscellaneous Goods			
ታህሳስ 1999	100.0	100.0	100.0	100.0	100.0	100.0	100.0	100.0	100.0	100.0	100.0	100.0	100.0	December 2006	
ሐምሌ 1999 - ሰኔ 2000	121.8	134.8	112.8	127.4	108.7	127.9	106.2	132.3	124.3	102.3	104.4	118.6	104.7	July 2007 - June 2008	
ሐምሌ 2000 - ሰኔ 2001	157.6	190.7	134.5	177.8	156.8	164.4	120.6	165.7	146.0	114.9	121.7	146.6	124.8	July 2008 - June 2009	
2001														2008/2009	
ግንቦት 2001	160.6	191.0	139.5	180.9	170.3	176.7	121.2	174.2	148.6	117.4	131.3	156.2	134.4	May "	
ሰኔ 2001	160.9	189.3	141.1	182.6	173.5	175.0	123.0	173.6	156.2	122.0	130.6	158.8	139.1	June "	
2002														2009/2010	
ሐምሌ 2001	164.0	191.8	144.7	187.6	173.2	179.7	125.3	174.0	156.2	132.3	130.9	158.3	142.1	July 2009	
ክሐሴ 2001	166.1	193.5	147.1	190.0	163.8	184.6	126.2	178.6	157.6	134.0	133.4	162.2	149.1	August "	
መስከረም 2002	172.2	203.2	150.7	193.8	170.7	188.1	131.8	178.5	159.2	138.5	131.5	164.5	155.7	September "	
ጥቅምት 2002	172.9	201.7	153.0	193.2	170.3	188.6	131.6	185.3	159.6	141.3	141.0	168.4	158.5	October "	
ጳጉሜ 2002	172.8	198.2	155.1	192.6	173.5	188.4	133.3	187.9	162.0	148.3	139.1	172.5	155.8	November "	
ታህሳስ 2002	171.9	196.8	154.7	190.1	171.9	187.4	132.6	192.9	156.7	149.4	130.1	177.3	157.2	December "	
ጥር 2002	170.7	191.1	156.6	189.8	172.9	191.4	133.2	193.4	160.2	150.4	136.6	181.4	162.6	January 2010	
የኅዳር 2002	172.5	194.3	157.4	192.2	179.2	194.8	133.6	197.3	158.6	148.1	139.1	181.4	158.0	February "	
መጋቢት 2002	174.8	197.8	158.9	197.6	181.4	198.3	135.7	199.4	159.9	146.5	138.1	185.1	159.6	March "	
ሚያዝያ 2002	178.4	201.2	162.6	199.5	185.3	200.6	138.7	200.5	162.4	156.0	142.2	186.3	157.5	April "	
ግንቦት 2002	181.0	203.2	165.6	204.1	184.8	201.1	140.1	208.5	170.8	161.6	140.6	190.2	163.4	May "	

ሠንጠረዥ 4ሀ- ጠቅላላ የ ሽግግር ዋጋ መመዘኛ ኢንዱስትሪ ቢሮ የተካተቱ ክፍሎች ለአፋር ክልል መገንጠት

ታህሳስ 1999 = 100

Table 4a: General Consumer Price Index and Its Components for the Afar Regional State

December 2006 = 100

ወርና ዓመት	ጠቅላላ ኢንዱስትሪ General Index	ጠቅላላ የምግብ ኢንዱስትሪ Food Total	ጠቅላላ የምግብ ካልኢንዱስትሪ Non-Food Total	ምግብ ካልኢንዱስትሪ ክፍሎች Non-food Consumer Price Index Components										Month and Year
				መጠጥ	ሲጃራና ትምባሆ	ልብና መጫጊያ	የቤት ኪራይና የቤት መሥሪያ ስቃዎች+ውሃ፣ ነጻጅናፕይል	የቤት ስቃዎች የቤት ግንባታዎች የቤት ቀሳቀስና የቤት ሠራተኞች ደመወዝ	እኩምና	ትራንስፖርትና መገናኛ	መዝናኛና ትምህርት	የግል ጽግል ስቃዎች	ሌሎች ስቃዎች	
				Beverages	Cigarettes and Tobacco	Clothing and Footwear	House Rent, Construction Materials, Water, and Fuel and Power	Furniture, Furnishings, Household Equipment and Operation	Medical Care and Health	Transport and Communication	Recreation, Entertainment and Education	Personal Care and Effects	Miscellaneous Goods	
ታህሳስ 1999	100.0	100.0	100.0	100.0	100.0	100.0	100.0	100.0	100.0	100.0	100.0	100.0	100.0	December 2006
ሐምሌ 1999 - ሰኔ 2000	124.3	136.1	110.2	109.2	102.5	114.5	107.3	113.8	100.6	124.4	92.2	107.2	101.5	July 2007 - June 2008
ሐምሌ 2000 - ሰኔ 2001	158.3	189.5	121.3	136.1	131.5	130.8	110.0	143.4	109.7	112.6	107.8	122.5	106.9	July 2008 - June 2009
2001														2008/2009
ግንቦት 2001	156.8	185.3	122.9	149.6	132.6	133.7	107.5	154.4	114.2	103.4	115.5	125.4	109.6	May "
ሰኔ 2001	158.7	187.2	124.9	151.5	133.9	130.8	113.1	153.7	126.5	107.8	112.5	128.0	108.1	June "
2002														2009/2010
ሐምሌ 2001	161.5	188.4	129.5	159.3	133.9	139.0	118.5	151.9	126.9	114.7	113.1	130.4	109.7	July 2009
ክለሴ 2001	165.3	195.1	130.0	153.0	134.0	144.6	116.8	151.7	126.9	116.7	110.6	129.1	111.1	August "
መስከረም 2002	173.7	201.6	140.6	155.0	133.5	143.0	137.7	165.4	119.3	124.3	111.5	130.3	110.9	September "
ጥቅምት 2002	176.0	204.2	142.5	161.6	132.8	144.5	141.0	166.2	115.1	126.7	109.9	128.8	110.4	October "
ዳር 2002	179.9	205.1	149.9	160.9	134.0	149.0	148.8	180.3	129.3	133.5	113.6	136.2	109.5	November "
ታህሳስ 2002	180.1	207.1	148.0	162.9	133.5	155.3	138.7	186.0	127.8	133.5	112.0	132.3	109.9	December "
ጥር 2002	180.6	205.1	151.6	163.5	136.8	153.2	147.8	187.7	127.8	138.0	107.6	129.1	111.9	January 2010
የካቲት 2002	183.2	207.3	154.7	162.9	142.5	158.8	150.9	189.2	129.3	138.0	107.9	131.1	113.8	February "
መጋቢት 2002	182.1	203.9	156.2	163.2	148.1	157.7	155.9	186.2	132.3	138.0	112.3	132.9	111.9	March "
ሚያዝያ 2002	186.7	209.8	159.2	163.8	153.2	158.2	161.3	187.4	132.3	144.6	113.2	133.7	111.1	April "
ግንቦት 2002	187.0	210.2	159.4	170.6	157.1	159.3	159.3	189.2	135.8	144.5	115.6	133.1	117.7	May "

ሠንጠረዥ 5ሀ፡ ጠቅላላ የሽግግር ዋጋ መመዘኛ ኢንዱስትሪ ቢሥሩ የተካተቱ ክፍሎች ለአገራዊ ክልላዊ መንግሥት

ታህሳስ 1999 = 100

Table 5a: General Consumer Price Index and Its Components for the Amhara Regional State

December 2006 = 100

ወርና ዓመት	ጠቅላላ ኢንዱስትሪ	ጠቅላላ የምግብ ኢንዱስትሪ	ጠቅላላ የምግብ ክፍል	Non-food Consumer Price Index Components										Month and Year
				መጠን	ሲጃራና ትምብዖ	ልብና መጫጫ	የቤት ኪራይ፣ የቤት መሥሪያ ስቃዎች+ውሃ፣ ነጻጅናሃይል	የቤት ስቃዎች የቤት ግንባራዎች የቤት ቁሳቁስና የቤት ሠራተኞች ደመወዝ	ሕክምና	ትራንስፖርትና መገናኛ	መገናኛና ትምህርት	የግል ገደብና የግል ቋሚ ስቃዎች	ሌሎች ስቃዎች	
	General Index	Food Total	Non-Food Total	Beverages	Cigarettes and Tobacco	Clothing and Footwear	House Rent, Construction Materials, Water, and Fuel and Power	Furniture, Furnishings, Household Equipment and Operation	Medical Care and Health	Transport and Communication	Recreation, Entertainment and Education	Personal Care and Effects	Miscellaneous Goods	
ታህሳስ 1999	100.0	100.0	100.0	100.0	100.0	100.0	100.0	100.0	100.0	100.0	100.0	100.0	100.0	December 2006
ሐምሌ 1999 - ሰኔ 2000	127.8	139.6	108.4	112.4	115.8	109.5	105.8	120.9	112.8	106.6	108.2	117.8	101.6	July 2007 - June 2008
ሐምሌ 2000 - ሰኔ 2001	172.1	198.7	128.4	198.7	154.5	132.4	118.5	156.1	124.2	113.2	127.4	148.3	103.4	July 2008 - June 2009
2001														2008/2009
ግንቦት 2001	163.4	180.8	134.8	198.1	175.6	145.6	122.8	167.1	134.1	109.5	141.2	157.2	103.9	May "
ሰኔ 2001	164.5	181.9	136.0	198.7	172.1	146.9	123.7	169.7	136.0	112.6	140.4	161.7	103.9	June "
2002														2009/2010
ሐምሌ 2001	169.6	187.4	140.3	201.6	171.4	151.4	128.3	172.7	137.4	115.7	142.4	172.7	104.0	July 2009
ክሐረ 2001	171.3	189.5	141.5	201.4	167.6	152.0	129.8	175.0	135.3	116.2	146.3	174.4	103.9	August "
መስከረም 2002	174.3	189.5	149.2	201.4	168.3	156.8	141.5	177.6	138.0	117.2	147.5	177.5	104.0	September "
ጥቅምት 2002	173.4	187.4	150.5	201.0	167.8	160.6	141.6	180.0	144.7	114.1	150.5	184.7	104.0	October "
ዳር 2002	172.1	184.2	152.3	199.5	171.1	163.6	143.0	180.9	149.4	120.1	149.7	192.8	104.0	November "
ታህሳስ 2002	172.6	183.1	155.4	202.3	165.6	166.4	146.6	184.7	151.9	127.4	151.0	192.2	104.0	December "
ጥር 2002	173.1	182.4	157.9	200.2	167.1	170.9	149.4	185.5	152.4	121.0	151.6	199.9	104.3	January 2010
የካቲት 2002	172.5	180.9	158.8	200.3	170.1	176.8	148.3	189.5	159.1	122.4	150.3	200.0	104.3	February "
መጋቢት 2002	173.9	182.5	159.8	200.2	186.4	180.9	148.5	191.3	160.0	122.4	153.9	197.0	104.4	March "
ሚያዝያ 2002	175.0	183.7	160.7	200.6	203.3	181.4	149.4	192.3	159.7	123.9	155.3	200.2	104.4	April "
ግንቦት 2002	175.8	184.1	162.1	200.8	210.3	188.4	149.0	195.2	163.1	126.1	155.0	200.9	104.3	May "

ሠንጠረዥ 6ሀ፡- ጠቅላላ የ ሽግግር ዋጋ መመዘኛ ኢንዱስትሪ ቢሥሩ የተካተቱ ክፍሎች ለቤኔሻንጋል ንዎስ ክልላዊ መንግሥት

ታህሳስ 1999 = 100

Table 6a: General Consumer Price Index and Its Components for the Benishangul Gumuz Regional State

December 2006 = 100

ወርና ዓመት	ጠቅላላ ኢንዱስትሪ	ጠቅላላ የምግብ ኢንዱስትሪ	ጠቅላላ የምግብ ክፍል	Non-food Consumer Price Index Components										Month and Year
				መጠን	ሲጃራና ትምባሆ	ልብና መጫሚያ	የቤት ኪራይና የቤት መሥሪያ ስቃዎች+ውሃና ነጻጅናሃይል	የቤት ስቃዎች የቤት ግንባራዎች የቤት ቁሳቁስና የቤት ሠራተኞች ደመወዝ	ሕክምና	ትራንስፖርትና መገናኛ	መገናኛና ትምህርት	የግል ገንባታና የግል ቋሚ ስቃዎች	ሌሎች ስቃዎች	
General Index	Food Total	Non-Food Total	Beverages	Cigarettes and Tobacco	Clothing and Footwear	House Rent, Construction Materials, Water, and Fuel and Power	Furniture, Furnishings, Household Equipment and Operation	Medical Care and Health	Transport and Communication	Recreation, Entertainment and Education	Personal Care and Effects	Miscellaneous Goods		
ታህሳስ 1999	100.0	100.0	100.0	100.0	100.0	100.0	100.0	100.0	100.0	100.0	100.0	100.0	100.0	December 2006
ሐምሌ 1999 - ሰኔ 2000	137.7	148.2	123.7	111.2	113.2	123.8	141.3	114.6	111.0	101.0	112.2	115.2	103.3	July 2007 - June 2008
ሐምሌ 2000 - ሰኔ 2001	193.9	226.1	151.4	150.0	148.3	156.2	159.4	158.1	143.4	100.7	158.5	146.5	112.4	July 2008 - June 2009
2001														2008/2009
ግንቦት 2001	184.4	205.1	157.0	154.1	164.8	161.8	167.6	162.7	149.5	96.1	165.5	157.3	107.6	May "
ሰኔ 2001	188.3	211.2	158.1	155.7	161.7	160.4	168.5	164.6	149.5	101.8	165.2	158.4	111.5	June "
2002														2009/2010
ሐምሌ 2001	198.5	225.5	162.8	156.5	164.0	164.2	170.7	180.9	152.8	105.6	166.7	164.3	112.1	July 2009
ክሐሴ 2001	199.6	227.3	162.9	155.7	166.0	163.1	169.4	186.7	151.0	104.8	166.1	166.4	112.1	August "
መስከረም 2002	199.5	226.1	164.2	154.4	165.5	166.3	172.5	184.5	150.4	105.0	165.6	170.6	114.0	September "
ጥቅምት 2002	191.5	208.8	168.6	154.3	163.6	174.7	179.5	187.6	147.1	108.5	170.8	165.7	112.1	October "
ጳር 2002	190.8	204.0	173.4	153.9	163.8	189.3	182.4	190.8	151.1	115.1	170.3	174.3	112.8	November "
ታህሳስ 2002	192.8	205.8	175.6	154.1	166.2	194.1	182.7	196.4	153.9	115.1	171.9	179.1	113.0	December "
ጥር 2002	185.6	192.7	176.0	153.7	167.4	205.4	177.1	196.8	157.5	117.6	173.1	184.1	112.9	January 2010
የካቲት 2002	182.6	187.5	176.0	154.3	189.3	209.6	171.3	201.4	159.2	117.6	172.4	187.5	117.1	February "
መጋቢት 2002	177.0	178.7	174.8	158.1	200.7	201.0	171.0	199.7	159.7	117.6	175.8	183.9	118.8	March "
ሚያዝያ 2002	179.5	181.5	177.0	160.8	207.1	205.0	174.2	199.5	160.2	121.0	173.2	187.8	112.1	April "
ግንቦት 2002	179.6	179.1	180.3	162.3	213.6	216.6	173.6	205.1	156.3	121.0	172.8	198.5	118.7	May "



ሠንጠረዥ 7ሀ፡- ጠቅላላ የ ሽያጭ ዋጋ መመዘኛ ኢንዱስትሪ ቢሥሩ የተሳተፉ ክፍሎች ለድረ-ላዩ አስተዳደር ካውንስል

ታህሳስ 1999 = 100

Table 7a: General Consumer Price Index and Its Components for the Dire Dawa Administrative Council

December 2006 = 100

ወርና ዓመት	ጠቅላላ ኢንዱስትሪ	ጠቅላላ የምግብ ኢንዱስትሪ	ጠቅላላ የምግብ ክፍል	Non-food Consumer Price Index Components										Month and Year
				መጠን	ሲጃራና ትምባሆ	ልብና መዳግያ	የቤት ኪራይና ስቃዎች+ውሃ ነጻጅናሃይል	የቤት ስቃዎች የቤት ግንባታዎች የቤት ቁሳቁስና የቤት ሠራተኞች ደመወዝ	እኩምና	ትራንስፖርትና መገናኛ	መዝናኛና ትምህርት	የግል ገንባታና የግል ቋጫ ስቃዎች	ሌሎች ስቃዎች	
General Index	Food Total	Non-Food Total	Beverages	Cigarettes and Tobacco	Clothing and Footwear	House Rent, Construction Materials, Water, and Fuel and Power	Furniture, Furnishings, Household Equipment and Operation	Medical Care and Health	Transport and Communication	Recreation, Entertainment and Education	Personal Care and Effects	Miscellaneous Goods		
ታህሳስ 1999	100.0	100.0	100.0	100.0	100.0	100.0	100.0	100.0	100.0	100.0	100.0	100.0	100.0	December 2006
ሐምሌ 1999 - ሰኔ 2000	125.6	135.4	115.6	113.2	101.2	109.2	120.9	124.5	115.8	105.5	116.8	108.2	102.9	July 2007 - June 2008
ሐምሌ 2000 - ሰኔ 2001	167.6	199.5	134.7	158.5	113.0	128.2	140.9	157.9	138.8	102.3	136.1	119.5	107.6	July 2008 - June 2009
2001														2008/2009
ግንቦት 2001	169.7	198.4	140.1	162.9	122.4	137.6	142.2	172.3	141.5	101.6	140.5	121.9	111.5	May "
ሰኔ 2001	170.5	198.0	142.2	163.9	112.6	138.6	146.5	173.2	140.9	102.3	141.7	127.6	116.7	June "
2002														2009/2010
ሐምሌ 2001	171.3	198.4	143.4	165.2	122.4	140.0	148.6	174.3	140.3	102.3	141.0	127.6	116.7	July 2009
ክሐሴ 2001	173.9	202.4	144.6	166.2	128.4	140.4	152.7	169.7	146.7	103.6	140.6	130.3	116.7	August "
መስከረም 2002	175.3	204.7	145.1	166.7	132.2	138.9	151.4	174.5	146.9	104.7	145.1	130.2	116.7	September "
ጥቅምት 2002	175.2	200.9	148.7	164.4	130.4	142.7	152.0	186.8	143.6	105.0	154.6	131.1	116.7	October "
ጳጉሜ 2002	174.3	197.4	150.6	167.9	139.3	147.9	153.7	182.6	153.3	106.2	157.0	131.4	118.8	November "
ታህሳስ 2002	173.7	195.3	151.5	168.1	149.6	149.0	153.7	183.8	150.8	107.7	160.9	131.3	119.8	December "
ጥር 2002	176.4	199.2	153.0	166.5	138.7	149.0	153.5	195.7	149.1	108.0	157.3	134.1	119.8	January 2010
የኅዳር 2002	176.2	198.3	153.4	168.1	138.7	148.6	153.4	196.4	155.2	108.0	158.5	136.5	122.9	February "
መጋቢት 2002	178.9	203.6	153.5	168.9	142.6	148.9	154.6	192.3	154.8	108.1	161.1	136.1	122.9	March "
ሚያዝያ 2002	179.3	202.4	155.5	168.3	142.6	148.8	156.5	199.9	153.1	108.9	161.0	139.6	125.0	April "
ግንቦት 2002	179.8	203.8	155.2	176.7	170.4	148.0	157.1	198.0	148.8	108.9	158.4	137.2	127.1	May "

ሠንጠረዥ 80:- ጠቅላላ የ ሽያጭ ዋጋ መመዘኛ ኢንዱስትሪ ቢሥሩ የተሳተፉ ክፍሎች ለጋምቤላ ሕዝቦች ክልል መገንጠያ

ታህሳስ 1999 = 100

Table 8a: General Consumer Price Index and Its Components for the Gambela Peoples Regional State

December 2006 = 100

ወርና ዓመት	ጠቅላላ ኢንዱስትሪ	ጠቅላላ የምግብ ኢንዱስትሪ	ጠቅላላ የምግብ ክፍል	Non-food Consumer Price Index Components											Month and Year
				መጠጥ	ሲጃራና ትምባሆ	ልብና መዳጊያ	የቤት ኪራይና ስቃዎች+ውሃና ነጻጅናሃይል	የቤት ስቃዎች የቤት ግንባታዎች የቤት ቁሳቁስና የቤት ሠራተኞች ደመወዝ	ሕክምና	ትራንስፖርትና መገናኛ	መዝናኛና ትምህርት	የግል ገንባታና የግል ቋጫ ስቃዎች	ሌሎች ስቃዎች		
General Index	Food Total	Non-Food Total	Beverages	Cigarettes and Tobacco	Clothing and Footwear	House Rent, Construction Materials, Water, and Fuel and Power	Furniture, Furnishings, Household Equipment and Operation	Medical Care and Health	Transport and Communication	Recreation, Entertainment and Education	Personal Care and Effects	Miscellaneous Goods			
ታህሳስ 1999	100.0	100.0	100.0	100.0	100.0	100.0	100.0	100.0	100.0	100.0	100.0	100.0	0.0	December 2006	
ሐምሌ 1999 - ሰኔ 2000	123.7	133.8	111.2	120.8	107.8	108.3	107.6	123.5	116.4	105.9	108.4	103.5	0.0	July 2007 - June 2008	
ሐምሌ 2000 - ሰኔ 2001	193.2	226.8	151.5	193.5	134.2	140.8	145.5	173.5	130.6	112.4	138.6	114.1	0.0	July 2008 - June 2009	
2001														2008/2009	
ግንቦት 2001	186.2	212.9	153.1	203.6	144.9	143.4	141.5	169.5	137.4	111.8	153.1	115.0	0.0	May "	
ሰኔ 2001	191.6	220.3	155.9	190.4	152.3	141.5	152.7	169.4	143.2	112.2	155.4	114.8	0.0	June "	
2002														2009/2010	
ሐምሌ 2001	197.8	230.0	157.8	190.5	152.3	141.9	157.7	167.5	143.8	112.2	154.7	116.0	0.0	July 2009	
ክሐረ 2001	200.7	232.7	160.8	198.4	152.3	141.2	162.1	166.0	151.3	114.4	163.4	116.6	0.0	August "	
መስከረም 2002	193.9	221.4	159.6	203.7	152.3	144.2	154.1	170.3	147.7	114.4	167.9	119.7	0.0	September "	
ጥቅምት 2002	185.6	208.4	157.3	204.1	152.3	144.1	144.8	184.7	156.7	114.4	162.5	119.9	0.0	October "	
ዳር 2002	183.8	203.0	160.0	206.4	152.3	147.4	149.0	179.4	148.1	140.0	158.9	120.0	0.0	November "	
ታህሳስ 2002	182.1	200.8	158.9	208.1	152.3	146.1	146.0	177.4	156.6	140.1	162.4	121.5	0.0	December "	
ጥር 2002	183.6	201.6	161.3	206.4	152.3	147.4	150.3	185.6	156.0	140.1	160.8	123.3	0.0	January 2010	
የካቲት 2002	183.7	199.5	164.2	206.3	161.9	149.0	153.3	189.3	157.5	140.1	171.7	118.7	0.0	February "	
መጋቢት 2002	181.5	189.9	170.9	206.4	183.6	147.1	164.4	188.7	157.4	140.1	192.2	121.1	0.0	March "	
ሚያዝያ 2002	181.1	188.7	171.8	206.4	185.5	145.8	166.0	192.6	159.0	141.4	189.0	121.4	0.0	April "	
ግንቦት 2002	184.9	194.4	173.1	211.3	186.1	146.9	167.4	191.9	161.1	141.4	181.4	121.9	0.0	May "	

ሠንጠረዥ 9ሀ:- ጠቅላላ የ ሽግግር ዋጋ መመዘኛ ኢንዱስትሪ ቢሥሩ የተካተቱ ክፍሎች ለሐረሬ ክልላዊ መንግሥት

ታህሳስ 1999 = 100

Table 9a: General Consumer Price Index and Its Components for the Harari People Regional State

December 2006 = 100

ወርና ዓመት	ጠቅላላ ኢንዱስትሪ	ጠቅላላ የምግብ ኢንዱስትሪ	ጠቅላላ የምግብ ክፍል የልሆኑ ኢንዱስትሪ	Non-food Consumer Price Index Components											Month and Year
				መጠጥ	ሲጃራና ትምባዩ	ልብስና መጫጊያ	የቤት ኪራይና የቤት መሥሪያ ስቃዎች+ውሃና ነጻጅናሃይል	የቤት ስቃዎች የቤት ግንባራዎች የቤት ቁሳቁስና የቤት ሠራተኞች ደመወዝ	ሕክምና	ትራንስፖርትና መገናኛ	መገናኛና ትምህርት	የግል ገንባታና የግል ቋጫ ስቃዎች	ሌሎች ስቃዎች		
General Index	Food Total	Non-Food Total	Beverages	Cigarettes and Tobacco	Clothing and Footwear	House Rent, Construction Materials, Water, and Fuel and Power	Furniture, Furnishings, Household Equipment and Operation	Medical Care and Health	Transport and Communication	Recreation, Entertainment and Education	Personal Care and Effects	Miscellaneous Goods			
ታህሳስ 1999	100.0	100.0	100.0	100.0	100.0	100.0	100.0	100.0	100.0	100.0	100.0	100.0	100.0	December 2006	
ሐምሌ 1999 - ሰኔ 2000	119.1	130.4	108.5	107.9	106.4	111.0	108.8	109.1	99.7	108.8	102.4	117.1	100.7	July 2007 - June 2008	
ሐምሌ 2000 - ሰኔ 2001	169.5	205.1	136.3	159.6	164.8	149.9	131.1	135.0	104.8	124.8	117.7	137.6	118.3	July 2008 - June 2009	
2001														2008/2009	
ግንቦት 2001	170.6	202.6	140.8	164.0	211.9	160.8	125.8	143.9	107.8	119.4	128.0	141.4	118.5	May "	
ሰኔ 2001	174.7	206.5	144.9	163.7	216.0	166.4	132.8	148.9	101.7	120.1	126.3	142.8	119.3	June "	
2002														2009/2010	
ሐምሌ 2001	177.4	209.7	147.2	164.0	211.9	166.8	136.0	149.7	170.1	120.8	129.2	144.9	119.8	July 2009	
ኔሐሴ 2001	176.0	203.6	150.2	167.9	213.7	170.2	135.7	153.0	205.6	131.5	132.6	147.5	119.8	August "	
መስከረም 2002	175.5	202.0	150.7	168.1	211.9	170.4	135.2	152.4	230.1	132.1	137.3	149.6	119.3	September "	
ጥቅምት 2002	179.7	208.9	152.5	166.4	211.9	171.2	136.1	159.5	250.3	132.4	140.0	148.2	119.7	October "	
ጳር 2002	175.6	200.1	152.8	167.5	225.9	171.8	134.0	160.8	250.2	132.9	140.3	148.9	120.2	November "	
ታህሳስ 2002	179.8	209.0	152.6	168.8	223.6	177.2	128.1	166.7	253.6	127.4	143.1	150.0	120.2	December "	
ጥር 2002	181.5	210.6	154.3	168.8	223.6	172.9	135.8	167.3	254.7	127.9	140.4	148.5	125.7	January 2010	
የካቲት 2002	182.1	212.2	154.0	168.8	215.9	171.5	137.2	165.8	253.2	127.9	141.5	151.2	121.7	February "	
መጋቢት 2002	186.3	218.1	156.5	168.8	234.1	174.4	140.2	166.0	250.6	127.9	144.5	150.4	120.7	March "	
ሚያዝያ 2002	185.0	213.5	158.4	168.8	220.2	175.7	145.0	167.1	253.4	128.3	149.6	150.8	120.2	April "	
ግንቦት 2002	187.5	218.1	158.8	168.8	225.8	176.6	144.6	168.3	249.1	128.3	149.9	150.3	119.7	May "	

ሠንጠረዥ 10ሀ:- ጠቅላላ የ ሽግግር ዋጋ መመዘኛ ኢንዱስትሪ ቢሥሩ የተካተቱ ክፍሎች ለአርግጫ ክልላዊ መንግሥት

ታህሳስ 1999 = 100

Table 10a: General Consumer Price Index and Its Components for the Oromiya Regional State

December 2006 = 100

ወርና ዓመት	ጠቅላላ ኢንዱስትሪ	ጠቅላላ የምግብ ኢንዱስትሪ	ጠቅላላ የምግብ ክፍል	Non-food Consumer Price Index Components											Month and Year
				መጠጥ	ሲጃራና ትምባሆ	ልብና መዳግያ	የቤት ኪራይና ስቃዎች+ውሃና ነጻጅናሃይል	የቤት ስቃዎች የቤት ግንባራዎች የቤት ቁሳቁስና የቤት ሠራተኞች ደመወዝ	እኩምና	ትራንስፖርትና መገናኛ	መዝናኛና ትምህርት	የግል ገንባታና የግል ቋጫ ስቃዎች	ሌሎች ስቃዎች		
General Index	Food Total	Non-Food Total	Beverages	Cigarettes and Tobacco	Clothing and Footwear	House Rent, Construction Materials, Water, and Fuel and Power	Furniture, Furnishings, Household Equipment and Operation	Medical Care and Health	Transport and Communication	Recreation, Entertainment and Education	Personal Care and Effects	Miscellaneous Goods			
ታህሳስ 1999	100.0	100.0	100.0	100.0	100.0	100.0	100.0	100.0	100.0	100.0	100.0	100.0	100.0	December 2006	
ሐምሌ 1999 - ሰኔ 2000	129.0	138.7	115.0	116.5	108.2	118.7	113.6	123.7	108.9	103.3	107.2	113.4	103.2	July 2007 - June 2008	
ሐምሌ 2000 - ሰኔ 2001	179.5	202.0	146.9	182.8	143.8	152.0	142.4	155.0	134.0	106.4	126.3	149.2	118.7	July 2008 - June 2009	
2001														2008/2009	
ግንቦት 2001	174.9	189.4	153.9	186.6	158.1	165.1	147.9	162.4	143.3	103.0	129.1	159.6	125.7	May "	
ሰኔ 2001	178.8	194.5	156.1	190.2	160.1	169.5	148.1	163.9	149.6	108.3	132.0	167.4	125.1	June "	
2002														2009/2010	
ሐምሌ 2001	178.8	192.7	158.6	189.5	161.4	171.7	150.4	169.1	147.1	111.2	137.3	170.9	127.9	July 2009	
ኔሐሴ 2001	180.3	192.2	163.1	192.5	159.2	178.5	156.0	172.0	147.7	112.4	138.6	172.9	133.5	August "	
መስከረም 2002	180.6	192.4	163.4	191.9	158.3	179.7	154.6	174.3	148.2	117.0	141.7	174.3	131.9	September "	
ጥቅምት 2002	176.0	184.1	164.3	193.3	163.1	180.7	156.5	172.9	150.5	120.2	140.1	171.5	129.2	October "	
ዳረ 2002	178.3	185.0	168.6	190.8	165.4	189.0	161.0	178.1	148.2	124.8	139.2	179.9	128.3	November "	
ታህሳስ 2002	178.8	184.4	170.7	191.9	162.4	186.9	164.4	183.6	152.2	125.1	149.1	182.7	127.0	December "	
ጥር 2002	181.8	186.3	175.2	195.8	170.4	197.3	167.2	186.9	154.9	128.4	151.2	182.2	131.8	January 2010	
የካቲት 2002	183.3	187.1	177.8	190.2	176.7	201.8	170.9	190.4	159.4	128.8	150.4	186.5	133.6	February "	
መጋቢት 2002	183.2	186.6	178.3	188.3	182.9	203.1	169.1	194.7	164.5	129.6	153.9	189.3	135.7	March "	
ሚያዝያ 2002	183.8	186.4	180.0	189.8	186.5	203.2	171.5	198.3	163.0	129.9	154.2	190.4	136.2	April "	
ግንቦት 2002	185.0	186.9	182.2	190.0	182.8	208.5	173.2	199.5	164.2	132.8	157.4	190.8	141.4	May "	

ሠንጠረዥ 11ሀ፡- ጠቅላላ የ ሽግግር ዋጋ መመዘኛ ኢንዱስትሪ ቢሥሩ የተካተቱ ክፍሎች ለደብዳቤ ክልላዊ መንግሥት

ታህሳስ 1999 = 100

Table 11a: General Consumer Price Index and Its Components for the SNNP Regional State

December 2006= 100

ወርና ዓመት	ጠቅላላ ኢንዱስትሪ ስርዓት	ጠቅላላ የምግብ ኢንዱስትሪ ስርዓት	ጠቅላላ የምግብ ክፍል ስርዓት	Non-food Consumer Price Index Components											Month and Year
				መጠን	ሲጃራና ትምባሆ	ልብና መዳጊያ	የቤት ኪራይና ስቃዎች+ውሃና ነጻጅናሃይል	የቤት ስቃዎች የቤት ግንባታዎች የቤት ቁሳቁስና የቤት ሠራተኞች ደመወዝ	እኩምና	ትራንስፖርትና መገናኛ	መዝናኛና ትምህርት	የግል ገንባታና የግል ቋጫ ስቃዎች	ሌሎች ስቃዎች		
General Index	Food Total	Non-Food Total	Beverages	Cigarettes and Tobacco	Clothing and Footwear	House Rent, Construction Materials, Water, and Fuel and Power	Furniture, Furnishings, Household Equipment and Operation	Medical Care and Health	Transport and Communication	Recreation, Entertainment and Education	Personal Care and Effects	Miscellaneous Goods			
ታህሳስ 1999	100.0	100.0	100.0	100.0	100.0	100.0	100.0	100.0	100.0	100.0	100.0	100.0	100.0	December 2006	
ሐምሌ 1999 - ሰኔ 2000	125.6	131.1	118.0	118.6	104.0	117.2	117.2	134.3	109.2	124.5	106.8	106.9	106.1	July 2007 - June 2008	
ሐምሌ 2000 - ሰኔ 2001	173.9	189.3	152.7	178.0	133.9	155.9	150.4	175.6	119.3	136.1	122.7	128.3	114.2	July 2008 - June 2009	
2001														2008/2009	
ግንቦት 2001	171.1	180.2	158.6	179.3	146.1	169.4	152.4	189.4	128.7	132.6	132.5	135.4	118.3	May "	
ሰኔ 2001	172.6	182.1	159.5	182.2	144.4	172.2	152.4	188.5	127.8	136.1	132.5	134.4	120.6	June "	
2002														2009/2010	
ሐምሌ 2001	174.7	182.6	163.8	186.9	144.9	176.3	157.2	193.0	131.5	140.6	136.1	135.9	120.6	July 2009	
ኔሐሴ 2001	177.1	184.5	166.9	187.1	146.3	178.6	161.9	197.5	127.5	141.5	137.1	140.3	121.8	August "	
መስከረም 2002	178.4	181.4	174.2	189.4	144.9	184.5	171.5	203.6	128.9	146.8	144.4	160.9	124.1	September "	
ጥቅምት 2002	180.3	182.8	177.0	193.5	146.1	186.3	175.2	202.7	129.8	149.0	144.1	166.4	131.0	October "	
ዳር 2002	180.5	180.9	179.9	193.3	144.9	190.0	178.0	207.1	132.5	156.9	142.7	184.5	124.1	November "	
ታህሳስ 2002	181.8	182.2	181.3	195.0	146.5	192.0	179.3	207.3	138.4	156.9	142.2	188.4	125.2	December "	
ጥር 2002	183.5	183.5	183.5	195.2	145.6	197.6	179.4	212.4	145.4	160.3	141.0	194.2	129.8	January 2010	
የካቲት 2002	182.6	181.2	184.6	195.7	156.0	202.8	178.5	217.1	140.1	160.7	136.3	201.4	126.4	February "	
መጋቢት 2002	182.9	177.9	189.8	196.6	185.6	205.2	187.2	222.6	141.7	160.7	138.3	202.5	126.4	March "	
ሚያዝያ 2002	184.3	179.2	191.2	202.5	197.7	205.9	188.0	221.9	148.7	164.5	141.2	199.1	125.2	April "	
ግንቦት 2002	181.8	174.0	192.5	204.4	184.3	209.8	188.0	223.8	150.7	164.5	141.5	205.0	126.4	May "	

ሠንጠረዥ 12ሀ:-ጠቅላላ የ ሽያጭ ረገድ ስርዓት ላይ ያሉ የግብርና ቤቶች የተካተቱ ክፍሎች ለሰግሌ ክልላዊ መንግስት

ታህሳስ 1999 = 100

Table 12a: General Consumer Price Index and Its Components for the Somali Regional State

December 2006 = 100

ወርና ዓመት	ጠቅላላ ሊንደክስ General Index	ጠቅላላ ምግብ ሊንደክስ Food Total	ጠቅላላ ምግብ ነክ ያልሆኑ ሊንደክስ Non-Food Total	ምግብ ነክ ያልሆኑ የሊንደክስ ክፍሎች Non-food Consumer Price Index Components											Month and Year	
				መጠጥ Beverages	ሲጃራና ትምባሆ Cigarettes and Tobacco	ልብና መጫጊያ Clothing and Footwear	የቤት ኪራይና ስቃዎች+ውሃና ነጻጅናሃይል House Rent, Construction Materials, Water, and Fuel and Power	የቤት ስቃዎች የቤት ግንባራዎች የቤት ቁሳቁስና የቤት ሠራተኞች ደመወዝ Furniture, Furnishings, Household Equipment and Operation	እኩምና Medical Care and Health	ትራንስፖርትና መገናኛ ጉምህርት Transport and Communication	መዝናኛና ትምህርት Recreation, Entertainment and Education	የግል ገጽቦናና የግል ቋጫ ስቃዎች Personal Care and Effects	ሌሎች ስቃዎች Miscellaneous Goods			
ታህሳስ 1999	100.0	100.0	100.0	100.0	100.0	100.0	100.0	100.0	100.0	100.0	100.0	100.0	100.0	100.0	100.0	December 2006
ሐምሌ 1999 - ሰኔ 2000	118.5	124.6	108.5	105.8	109.2	111.4	107.9	107.2	133.1	103.5	100.8	99.7	100.8	100.8	100.8	July 2007 - June 2008
ሐምሌ 2000 - ሰኔ 2001	170.8	195.9	129.8	134.2	123.1	129.1	128.4	149.6	144.5	115.8	107.8	118.5	131.3	131.3	131.3	July 2008 - June 2009
2001																2008/2009
ግንቦት 2001	173.5	196.3	136.2	142.9	123.1	136.5	134.0	167.2	131.4	117.1	114.9	125.2	135.8	135.8	135.8	May "
ሰኔ 2001	179.5	203.8	139.8	142.4	138.5	138.6	136.1	168.9	151.9	117.3	121.4	125.7	135.8	135.8	135.8	June "
2002																2009/2010
ሐምሌ 2001	178.8	202.3	140.6	142.8	156.1	139.5	133.3	169.7	160.8	117.6	118.8	125.6	135.8	135.8	135.8	July 2009
ኔሐሴ 2001	176.5	197.4	142.3	142.8	156.1	140.0	137.9	165.5	156.3	119.4	128.4	126.1	135.8	135.8	135.8	August "
መስከረም 2002	181.1	203.4	144.6	142.8	156.1	143.0	140.4	168.8	153.1	120.9	133.6	129.4	135.8	135.8	135.8	September "
ጥቅምት 2002	185.2	209.1	146.4	142.8	156.1	150.8	139.0	171.9	161.9	118.7	132.8	131.3	135.8	135.8	135.8	October "
ዳር 2002	181.7	199.7	152.4	142.8	156.1	154.8	149.1	175.2	176.1	123.7	131.6	131.8	141.3	141.3	141.3	November "
ታህሳስ 2002	183.0	199.8	155.7	150.2	156.1	158.5	151.7	175.6	201.0	130.0	132.3	132.2	157.8	157.8	157.8	December "
ጥር 2002	185.0	200.9	159.1	150.2	156.1	155.3	160.3	180.8	196.4	131.3	131.7	131.8	163.0	163.0	163.0	January 2010
የካቲት 2002	191.0	208.3	162.7	151.1	156.1	165.2	163.4	178.6	205.0	129.4	137.6	131.2	168.2	168.2	168.2	February "
መጋቢት 2002	188.7	204.7	162.7	158.1	156.1	161.0	161.3	185.9	220.8	134.1	137.2	135.5	168.2	168.2	168.2	March "
ሚያዝያ 2002	187.6	201.9	164.4	162.4	156.1	163.2	164.9	181.8	222.3	135.0	137.5	135.9	168.2	168.2	168.2	April "
ግንቦት 2002	187.7	201.5	165.1	174.1	156.1	161.8	167.5	181.9	212.2	135.0	136.7	135.1	168.2	168.2	168.2	May "

ሠንጠረዥ 13ሀ፡- ጠቅላላ የ ሽግግር ዋጋ መመዘኛ ኢንዱስትሪ ቢሮ የተካተቱ ክፍሎች ለትግራይ ክልል መገገሚያ

ታህሳስ 1999 = 100

Table 13a: General Consumer Price Index and Its Components for the Tigray Regional State

December 2006 = 100

ወርና ዓመት	ጠቅላላ ኢንዱስትሪ	ጠቅላላ የምግብ ኢንዱስትሪ	ጠቅላላ የምግብ ክፍል	Non-food Consumer Price Index Components										Month and Year
				የምግብ ክፍል	ቢጃራና ትምባሆ	ልብና መጫጫያ	የቤት ኪራይ፣ የቤት መሥሪያ ስቃዎች+ውሃ፣ ንጅናፕይል	የቤት ስቃዎች የቤት ግብይቶች የቤት ተሳታፊነት የቤት ሠራተኛ ደመወዝ	እኩምና	ትራንስፖርትና መገናኛ	መዝናኛና ትምህርት	የግል ንጽባናና የግል ቋጫ ስቃዎች	ሌሎች ስቃዎች	
General Index	Food Total	Non-Food Total	Beverages	Cigarettes and Tobacco	Clothing and Footwear	House Rent, Construction Materials, Water, and Fuel and Power	Furniture, Furnishings, Household Equipment and Operation	Medical Care and Health	Transport and Communication	Recreation, Entertainment and Education	Personal Care and Effects	Miscellaneous Goods		
ታህሳስ 1999	100.0	100.0	100.0	100.0	100.0	100.0	100.0	100.0	100.0	100.0	100.0	100.0	100.0	December 2006
ሐምሌ 1999 - ሰኔ 2000	130.1	143.4	111.7	112.2	101.6	119.7	107.8	120.2	104.7	99.1	105.0	105.8	116.0	July 2007 - June 2008
ሐምሌ 2000 - ሰኔ 2001	183.0	214.8	139.4	188.8	117.4	161.4	131.1	151.8	106.4	101.4	113.3	126.5	134.5	July 2008 - June 2009
2001														2008/2009
ግንቦት 2001	173.1	191.6	147.7	205.7	131.4	175.7	134.8	163.2	110.1	95.5	117.4	154.3	135.9	May "
ሰኔ 2001	175.8	194.3	150.3	205.7	146.5	179.0	135.7	164.9	110.2	96.3	122.2	167.2	141.0	June "
2002														2009/2010
ሐምሌ 2001	180.2	198.2	155.5	196.5	161.8	188.0	140.8	167.1	111.2	108.7	124.3	171.7	141.0	July 2009
ኔሐሴ 2001	182.6	200.2	158.4	203.1	174.5	191.9	141.9	170.5	110.1	110.6	130.1	182.6	142.9	August "
መስከረም 2002	181.3	197.6	158.7	199.3	186.3	191.4	141.8	173.7	115.6	116.7	126.7	179.3	142.9	September "
ጥቅምት 2002	185.8	202.7	162.4	187.3	185.4	200.0	145.9	175.5	115.1	118.6	124.4	184.3	140.6	October "
ዳር 2002	184.5	199.7	163.6	190.4	179.9	201.8	143.8	182.0	116.2	124.6	122.3	180.7	153.0	November "
ታህሳስ 2002	183.8	197.3	165.4	193.8	192.0	203.5	146.1	182.7	121.5	126.6	119.7	182.0	153.0	December "
ጥር 2002	182.9	195.4	165.8	201.1	189.1	204.4	143.9	188.9	128.3	129.1	125.3	188.2	140.6	January 2010
የካቲት 2002	182.8	193.6	167.8	200.6	199.6	208.3	144.6	194.0	124.9	129.1	128.1	190.2	144.5	February "
መጋቢት 2002	185.8	196.4	171.3	203.3	207.6	212.5	149.2	195.7	124.8	129.0	128.2	188.7	152.7	March "
ሚያዝያ 2002	187.6	198.9	172.2	204.0	192.0	217.7	148.0	195.4	127.7	135.2	128.1	188.7	148.6	April "
ግንቦት 2002	190.2	200.8	175.7	207.5	200.2	226.4	149.3	198.8	129.8	135.2	133.5	191.0	150.8	May "

ሠንጠረዥ 1ሐ:- ጠቅላላ የምግብና የምግብ ክፍሎች የ ሽግግር ዋጋ መመዘኛ ሊገደክሰ በአገር አቀፍ ደረጃ

ታህሳስ 1999 = 100

Table 1b: Consumer Price Index of Total Food and Its Components at Country Level

December 2006 = 100

ወርና ዓመት	ጠቅላላ የምግብ	እህል	በቤት ውስጥ የተወሰኑ የምግብ ዓይነቶች											ከቤት ውጪ የተወሰኑ የምግቦች	Month and Year
			ጥራጥረ	ዳቦና ሌሎች የተዘጋጁ የምግቦች	ሥጋ	ወተት+ ዓይብና እንቁላል	ዘይትና ቅባቶች	አትክልትና ፍራፍረ	ቅመግ ቅመም	ድገቶች ሌሎች ሥራሥርቶች	ያልተቆሳ ቡናና ጃይ ቅጠል	ሌሎች የምግቦች	የግብረጫ አገልግሎት		
Food Total	Cereals	Pulses	Bread and other Prepared Food	Meat	Milk,Cheese and Egg	Oils and Fats	Vegetables and Fruits	Spices	Potatoes, Other Tubers and Stems	Coffee (beans, whole) and Tea Leaves	Other Food Items	Milling Charges	Food taken away from home	Month and Year	
ታህሳስ 1999	100.0	100.0	100.0	100.0	100.0	100.0	100.0	100.0	100.0	100.0	100.0	100.0	100.0	100.0	December 2006
ሐምሌ 1999 - ሰኔ 2000	137.2	137.2	124.1	137.6	120.0	117.7	152.6	142.0	325.9	125.7	124.5	104.7	113.9	118.7	July 2007 - June 2008
ሐምሌ 2000 - ሰኔ 2001	198.0	239.8	169.9	225.5	149.6	159.5	170.3	168.0	272.1	188.3	143.3	164.7	129.6	151.1	July 2008 - June 2009
2001															2008/2009
ግንቦት 2001	185.6	207.4	171.2	227.7	153.4	172.7	166.4	203.1	159.6	196.3	147.1	185.5	135.7	157.6	May "
ሰኔ 2001	188.6	212.4	169.2	228.6	154.5	177.9	163.5	205.8	153.5	206.1	149.6	184.5	139.0	160.0	June "
2002															2009/2010
ሐምሌ 2001	189.8	219.1	169.2	231.7	154.9	174.5	161.1	173.7	176.0	184.5	155.3	187.5	142.0	162.3	July 2009
ክሐሴ 2001	190.4	220.6	167.5	231.5	157.0	174.9	163.7	175.8	167.2	177.0	160.4	185.6	147.0	164.8	August "
መስከረም 2002	190.5	212.2	168.4	232.5	164.4	183.2	168.5	192.6	164.2	186.9	169.0	189.1	149.4	168.9	September "
ጥቅምት 2002	186.9	201.6	166.7	235.1	162.9	181.0	166.3	184.5	178.5	189.2	176.3	182.7	148.0	170.4	October "
ዳር 2002	185.9	198.2	162.7	236.4	158.8	180.3	163.4	168.9	192.3	194.4	178.7	194.4	151.8	172.8	November "
ታህሳስ 2002	185.5	193.7	162.5	234.8	156.3	181.7	161.8	171.9	204.4	203.2	178.3	197.6	155.9	176.0	December "
ጥር 2002	186.0	192.4	161.8	240.2	161.0	191.2	164.7	173.4	200.2	205.6	178.2	198.0	156.1	176.6	January 2010
የካቲት 2002	185.7	187.4	168.0	237.2	160.9	188.7	165.7	191.6	207.2	201.9	186.1	202.0	158.5	174.7	February "
መጋቢት 2002	185.6	181.7	171.2	237.3	169.5	184.7	167.3	199.1	249.2	197.7	179.0	204.1	158.2	180.4	March "
ግድሃት 2002	186.2	178.7	171.5	234.9	171.3	191.7	174.4	202.3	265.1	202.0	179.0	212.8	160.7	180.4	April "
ግንቦት 2002	185.7	177.7	176.0	237.6	167.2	191.6	176.5	185.5	288.6	192.6	179.6	203.6	168.7	182.3	May "



ወጪ ስርዓት ለግብርና ጥገና ማዘጋጀት ለሚያስፈልጉት የግብርና ስርዓት ለግብርና ስርዓት ለግብርና ስርዓት

ታህሳስ 1999 = 100

Table 2b: Summary of Consumer Price Indices of Food at Country and Regional Levels

December 2006=100

ወርና ዓመት	Reporting Level												Month and Year
	Eth.	A.A.	Afar	Amhara	B.Gumuz	D.Dawa	Gambela	Harari	Oromia	SNNP	Somalia	Tigray	
ታህሳስ 1999	100.0	100.0	100.0	100.0	100.0	100.0	100.0	100.0	100.0	100.0	100.0	100.0	December 2006
ሐምሌ 1999 - ሰኔ 2000	137.2	134.8	136.1	139.6	148.2	135.4	133.8	130.4	138.7	131.1	124.6	143.4	July 2007 - June 2008
ሐምሌ 2000 - ሰኔ 2001	198.0	190.7	189.5	198.7	226.1	199.5	226.8	205.1	202.0	189.3	195.9	214.8	July 2008 - June 2009
2001													2008/2009
ግንቦት 2001	185.6	191.0	185.3	180.8	205.1	198.4	212.9	202.6	189.4	180.2	196.3	191.6	May "
ሰኔ 2001	188.6	189.3	187.2	181.9	211.2	198.0	220.3	206.5	194.5	182.1	203.8	194.3	June "
2002													2009/2010
ሐምሌ 2001	189.8	191.8	188.4	187.4	225.5	198.4	230.0	209.7	192.7	182.6	202.3	198.2	July 2009
ክሌሌ 2001	190.4	193.5	195.1	189.5	227.3	202.4	232.7	203.6	192.2	184.5	197.4	200.2	August "
መስከረም 2002	190.5	203.2	201.6	189.5	226.1	204.7	221.4	202.0	192.4	181.4	203.4	197.6	September "
ጥቅምት 2002	186.9	201.7	204.2	187.4	208.8	200.9	208.4	208.9	184.1	182.8	209.1	202.7	October "
ዳር 2002	185.9	198.2	205.1	184.2	204.0	197.4	203.0	200.1	185.0	180.9	199.7	199.7	November "
ታህሳስ 2002	185.5	196.8	207.1	183.1	205.8	195.3	200.8	209.0	184.4	182.2	199.8	197.3	December "
ጥር 2002	186.0	191.1	205.1	182.4	192.7	199.2	201.6	210.6	186.3	183.5	200.9	195.4	January 2010
ፀደቅ 2002	185.7	194.3	207.3	180.9	187.5	198.3	199.5	212.2	187.1	181.2	208.3	193.6	February "
መጋቢት 2002	185.6	197.8	203.9	182.5	178.7	203.6	189.9	218.1	186.6	177.9	204.7	196.4	March "
ጊዳር 2002	186.2	201.2	209.8	183.7	181.5	202.4	188.7	213.5	186.4	179.2	201.9	198.9	April "
ግንቦት 2002	185.7	203.2	210.2	184.1	179.1	203.8	194.4	218.1	186.9	174.0	201.5	200.8	May "

ሠንጠረዥ 3 ለ፡- ጠቅላላ የሽግግር ዋጋ መመዘኛ ሊያደስበት በሥራ የተካተቱ ክፍሎች ለአዲስ አበባ ከተማ መስተዳድር

ታህሳስ 1999 = 100

Table 3b: Consumer Price Index of Total Food and Its Components for Addis Ababa City Administration

December 2006 = 100

ወርና ዓመት	ጠቅላላ የምግብ ስህል	በቤት ውስጥ የተወሰኑ የምግብ ዓይነቶች FOOD TAKEN AT HOME												ከቤት ውጭ የተወሰኑ የምግቦች	Month and Year	
		ጥራጥራ	ዳቦና ሌሎች የተዘጋጁ የምግቦች	ሥጋ	ወተት+ ዓይብና ለንቁላል	ዘይትና ቅባቶች	አትክልትና ፍራፍሬ	ቅመግ ቅመም	ድጎችና ሌሎች ሥራሥርዥ	ያልተቆሳ ቡናና ሻይ ቅጠል	ሌሎች የምግቦች	የግብረጫ አገልግሎት				
ታህሳስ 1999	100.0	100.0	100.0	100.0	100.0	100.0	100.0	100.0	100.0	100.0	100.0	100.0	100.0	100.0	100.0	December 2006
ሐምሌ 1999 - ሰኔ 2000	134.8	122.2	134.5	134.6	118.9	129.4	145.3	134.2	320.3	206.6	128.5	105.9	119.7	120.6	July 2007 - June 2008	
ሐምሌ 2000 - ሰኔ 2001	190.7	213.2	192.8	217.4	153.7	182.2	166.2	183.0	252.2	288.8	137.3	159.8	139.7	156.1	July 2008 - June 2009	
2001															2008/2009	
ግንቦት 2001	191.0	207.5	186.0	217.3	157.5	191.8	169.4	229.5	149.1	318.0	138.0	187.7	140.1	169.0	May "	
ሰኔ 2001	189.3	204.7	182.5	223.8	159.1	203.1	170.3	207.6	146.7	290.9	137.6	188.1	140.1	168.1	June "	
2002															2009/2010	
ሐምሌ 2001	191.8	210.6	184.8	233.0	163.0	211.6	165.7	183.9	163.4	255.3	137.2	189.5	149.0	172.8	July 2009	
ክሐሴ 2001	193.5	210.9	187.5	233.1	163.0	208.9	164.2	199.0	156.1	242.2	176.4	176.9	148.5	177.4	August "	
መስከረም 2002	203.2	218.6	188.4	238.4	167.8	215.3	172.5	251.3	152.5	243.6	185.3	201.3	164.6	180.4	September "	
ጥቅምት 2002	201.7	215.4	187.5	238.8	166.2	215.1	169.8	191.1	218.5	268.6	186.2	199.5	157.8	185.7	October "	
ዳር 2002	198.2	214.5	188.3	230.0	163.7	208.6	165.4	168.6	198.8	265.4	194.4	206.0	159.7	193.7	November "	
ታህሳስ 2002	196.8	198.9	187.0	238.9	163.7	206.8	164.3	161.8	221.4	272.9	190.5	216.7	159.4	200.1	December "	
ጥር 2002	191.1	194.7	193.1	228.5	158.1	208.2	170.1	145.4	190.3	281.0	188.3	200.1	161.2	201.5	January 2010	
የካቲት 2002	194.3	189.4	193.6	227.0	168.3	210.4	168.3	173.6	201.2	286.1	188.6	214.8	161.2	205.1	February "	
መጋቢት 2002	197.8	185.3	194.9	233.9	175.0	205.7	167.9	188.7	246.7	269.0	187.9	195.6	161.2	216.6	March "	
ጊዮርጊያ 2002	201.2	184.0	194.5	233.6	177.4	214.5	170.8	217.1	274.8	278.4	182.7	196.7	161.2	214.8	April "	
ግንቦት 2002	203.2	182.3	194.2	247.0	178.7	222.7	173.4	196.1	289.8	260.1	181.1	211.0	163.2	219.8	May "	

ወንጠረዥ 4ሳ:- ጠቅላላ የምግብ ክፍሎች የ ሽግግር ዋጋ መመዘኛ ኢንዱስትሪ ለአፋር ክልል መገንጠያ  
 ታህሳስ 1999 = 100

Table 4b: Consumer Price index of Total Food and Its Components for the Afar Regional State

December 2006 = 100

ወርና ዓመት	ጠቅላላ ምግብ Food Total	እህል Cereals	በቤት ውስጥ የተወሰዱ የምግብ ዓይነቶች					FOOD TAKEN AT HOME							ከቤት ውጪ የተወሰዱ ምግቦች Food taken away from home	Month and Year
			ጥራጥራ Pulses	ዳቦና ሌሎች የተዘጋጁ ምግቦች Bread and other Prepared Food	ሥጋ Meat	ወተት+ ዓይብና እንቁላል Milk,Cheese and Egg	ዘይትና ቅባቶች Oils and Fats	አትክልትና ፍራፍራ Vegetables and Fruits	ቅመግ ቅመም Spices	ድጎችና ሌሎች ሥራሥርች Potatoes, Other Tubers and Stems	ያልተቆላ ቡናና ቫይ ቅጠል Coffee (beans, whole and Tea Leaves	ሌሎች ምግቦች Other Food Items	የግብረጫ አገልግሎት Milling Charges			
ታህሳስ 1999	100.0	100.0	100.0	100.0	100.0	100.0	100.0	100.0	100.0	100.0	100.0	100.0	100.0	100.0	100.0	December 2006
ሐምሌ 1999 - ሰኔ 2000	136.1	124.6	147.1	127.1	140.1	139.8	151.6	138.8	341.4	151.8	105.8	94.9	101.8	121.1	July 2007 - June 2008	
ሐምሌ 2000 - ሰኔ 2001	189.5	206.5	205.3	229.3	178.5	180.0	174.1	192.5	275.7	233.8	143.2	137.1	119.7	170.3	July 2008 - June 2009	
2001															2008/2009	
ግንቦት 2001	185.3	186.6	185.7	244.5	203.2	177.7	167.6	262.3	155.3	246.1	154.4	161.2	119.1	171.4	May "	
ሰኔ 2001	187.2	188.3	183.5	244.2	206.5	177.3	166.7	256.3	153.2	238.8	168.0	163.5	119.1	178.7	June "	
2002															2009/2010	
ሐምሌ 2001	188.4	193.2	185.4	241.9	193.1	176.5	169.2	237.4	171.6	242.5	171.1	174.0	119.1	178.3	July 2009	
ኔሴ 2001	195.1	200.2	192.4	251.9	191.7	204.2	166.9	222.0	159.7	221.9	168.3	177.6	119.1	179.5	August "	
መስከረም 2002	201.6	213.6	189.6	252.2	196.2	219.9	165.7	228.2	158.7	225.6	157.2	179.0	119.1	184.6	September "	
ጥቅምት 2002	204.2	208.1	196.5	249.1	194.3	230.5	164.4	211.9	183.8	229.7	165.2	185.9	119.1	196.1	October "	
ዳር 2002	205.1	207.6	192.5	252.2	195.2	231.0	164.9	192.3	199.2	226.0	178.9	182.8	119.1	197.9	November "	
ታህሳስ 2002	207.1	209.9	192.9	242.5	197.0	241.3	164.8	187.2	217.4	232.9	176.3	183.5	119.1	197.1	December "	
ጥር 2002	205.1	202.7	196.2	255.7	211.3	233.4	166.7	172.0	194.8	222.4	181.7	188.3	136.9	195.8	January 2010	
የካቲት 2002	207.3	202.7	194.8	244.4	219.4	234.8	170.8	174.7	198.1	226.0	192.3	200.1	136.9	200.6	February "	
መጋቢት 2002	203.9	193.2	201.0	242.1	211.0	221.2	179.5	173.6	221.5	228.8	200.0	202.4	136.9	200.2	March "	
ጊዳር 2002	209.8	194.9	198.4	241.5	223.9	234.5	183.2	214.1	264.4	226.0	187.2	202.4	136.9	202.3	April "	
ግንቦት 2002	210.2	185.2	194.7	258.0	222.0	233.4	186.2	231.3	286.0	228.8	195.1	201.5	136.9	204.9	May "	

ወንጠረኛ 5ላ፡- ጠቅላላ የምግብ ክፍሎች የ ሽግግር የጋ መዘዥ ኢንዱስትሪ ለአገራዊ ክልላዊ መገንጠት  
 ታህሳስ 1999 = 100

Table 5b: Consumer Price Index of Total Food and Its Components for the Amhara Regional State  
 December 2006 = 100

ወርና ዓመት	ጠቅላላ የምግብ	እህል	በቤት ውስጥ የተወሰዱ የምግብ ዓይነቶች											ጠቅላላ የተወሰዱ የምግቦች	ክቢት ወ-ወረዳ
			ጥራጥራ	ዳቦና ሌሎች የተዘጋጁ የምግቦች	ሥጋ	ወተት+ ዓይብና እንቁላል	ዘይትና ቅባቶች	አትክልትና ፍራፍራ	ቅመግ ቅመፆ	ድንችና ሌሎች ሥራሥርች	ያልተቆሳ ቡናና ሻይ ቅጠል	ሌሎች የምግቦች	የግብረ-ጫ አገልግሎት		
Food Total	Cereals	Pulses	Bread and other Prepared Food	Meat	Milk,Cheese and Egg	Oils and Fats	Vegetables and Fruits	Spices	Potatoes, Other Tubers and Stems	Coffee (beans, whole) and Tea Leaves	Other Food Items	Milling Charges	Food taken away from home	Month and Year	
ታህሳስ 1999	100.0	100.0	100.0	100.0	100.0	100.0	100.0	100.0	100.0	100.0	100.0	100.0	100.0	100.0	December 2006
ሐምሌ 1999 - ሰኔ 2000	139.6	137.6	117.9	131.0	117.8	125.6	161.8	129.4	297.0	122.1	125.2	105.8	106.7	121.4	July 2007 - June 2008
ሐምሌ 2000 - ሰኔ 2001	198.7	231.9	163.4	215.5	144.6	178.9	183.7	160.6	248.5	188.8	140.1	183.2	121.2	158.7	July 2008 - June 2009
2001															2008/2009
ግንቦት 2001	180.8	201.3	156.8	222.0	149.1	188.5	183.5	202.7	144.3	208.6	140.1	206.0	125.2	163.8	May "
ሰኔ 2001	181.9	203.4	156.5	220.2	153.0	195.6	179.6	204.1	139.9	197.1	144.4	204.1	128.9	165.8	June "
2002															2009/2010
ሐምሌ 2001	187.4	212.4	157.0	225.0	151.2	193.9	179.0	180.6	165.9	197.7	146.1	206.4	133.6	168.5	July 2009
ኦገስት 2001	189.5	214.3	163.2	222.3	152.4	197.5	180.5	182.5	159.9	197.7	150.3	205.3	143.2	170.2	August "
መስከረም 2002	189.5	211.4	159.5	219.8	160.4	205.3	178.3	194.8	156.8	198.9	162.5	208.0	141.6	176.4	September "
ጥቅምት 2002	187.4	206.2	157.0	224.9	165.4	204.6	171.2	180.0	168.2	186.8	174.3	209.0	143.3	175.4	October "
ዳረ 2002	184.2	199.8	148.9	228.7	156.7	201.9	168.7	155.8	177.0	187.9	195.2	213.4	142.5	178.7	November "
ታህሳስ 2002	183.1	193.1	149.1	222.7	157.4	211.9	167.0	167.4	191.1	202.9	195.1	211.1	149.9	183.3	December "
ጥር 2002	182.4	190.9	149.5	219.4	165.4	208.9	170.7	165.6	183.8	200.6	195.9	209.3	153.3	184.5	January 2010
የካቲት 2002	180.9	185.1	155.5	220.4	162.1	212.6	170.7	184.9	181.0	206.9	201.4	214.1	159.5	181.9	February "
መጋቢት 2002	182.5	178.8	155.8	215.5	180.3	207.3	174.9	195.6	227.6	209.2	204.9	215.2	158.4	185.2	March "
ጊዮርጊያ 2002	183.7	179.4	157.6	218.6	179.1	210.9	180.7	189.7	241.3	208.6	204.6	225.7	158.4	182.5	April "
ግንቦት 2002	184.1	179.9	156.3	218.1	171.7	212.1	182.7	182.1	265.9	208.6	196.8	214.7	161.4	182.1	May "

ወንጠረኻ ልሳ፡- ጠቅላላ የግብርና የግብር ክፍሎች የ ሽግግር ዋጋ መመዘኛ ሊገደክሰ ለቤሽግጥል ደምዘ ክልላዊ መገንጠያ  
 ታህሳስ 1999 = 100

Table 6b: Consumer Price Index of Total Food and Its Components for the Benishangul Gumuz Regional state  
 December 2006 = 100

ወርና ዓመት	ጠቅላላ የግብር	እህል	በቤት ውስጥ የተወሰዱ የምግብ ዓይነቶች											ከቤት ውጪ የተወሰዱ የምግቦች	Month and Year
			ጥራጥረ	ዳቦና ሌሎች የተዘጋጁ የምግቦች	ሥጋ	ወተት+ ዓይብና እንቁላል	ዘይትና ቅባቶች	አትክልትና ፍራፍረ	ቅመግ ቅመም	ድንችና ሌሎች ሥራሥርች	ያልተቆሳ ቡናና ጃይ ቅጠል	ሌሎች የምግቦች	የግብረጫ አገልግሎት		
Food Total	Cereals	Pulses	Bread and other Prepared Food	Meat	Milk,Cheese and Egg	Oils and Fats	Vegetables and Fruits	Spices	Potatoes, Other Tubers and Stems	Coffee (beans, whole) and Tea Leaves	Other Food Items	Milling Charges	Food taken away from home	Month and Year	
ታህሳስ 1999	100.0	100.0	100.0	100.0	100.0	100.0	100.0	100.0	100.0	100.0	100.0	100.0	100.0	100.0	December 2006
ሐምሌ 1999 - ሰኔ 2000	148.2	160.9	112.5	129.7	131.1	108.5	142.4	116.6	366.2	127.0	128.5	105.1	111.1	117.8	July 2007 - June 2008
ሐምሌ 2000 - ሰኔ 2001	226.1	297.3	158.6	222.6	172.4	158.4	176.9	149.0	332.9	200.3	134.5	166.3	126.0	150.8	July 2008 - June 2009
2001															2008/2009
ግንቦት 2001	205.1	254.0	170.2	242.8	168.4	164.6	193.2	160.5	196.6	172.7	132.9	183.4	126.0	159.5	May "
ሰኔ 2001	211.2	260.0	179.7	214.2	172.5	172.1	184.4	171.8	226.7	211.6	139.3	187.7	129.2	162.3	June "
2002															2009/2010
ሐምሌ 2001	225.5	290.9	183.7	224.2	177.6	179.5	177.4	160.8	212.7	198.2	146.7	187.1	129.9	171.2	July 2009
ኦገስት 2001	227.3	294.6	176.8	228.7	184.1	182.0	178.8	152.3	212.3	182.1	159.2	187.6	145.4	168.3	August "
መስከረም 2002	226.1	290.8	168.3	230.2	179.9	185.1	176.1	162.5	195.7	199.5	176.5	187.7	151.5	167.5	September "
ጥቅምት 2002	208.8	248.3	173.1	233.8	174.0	183.1	173.8	157.2	195.7	197.0	189.7	187.5	157.4	173.9	October "
ዳር 2002	204.0	237.0	142.8	218.6	156.1	194.8	170.9	150.7	224.4	172.3	231.4	194.7	153.8	178.0	November "
ታህሳስ 2002	205.8	238.3	144.2	225.5	159.2	191.5	171.2	157.5	253.4	178.8	208.7	197.8	157.6	181.2	December "
ጥር 2002	192.7	202.9	151.4	235.3	161.1	203.0	178.9	149.2	274.0	174.3	205.5	201.0	168.3	186.9	January 2010
የካቲት 2002	187.5	189.8	164.2	219.0	157.0	210.0	182.7	155.3	269.8	182.4	201.2	200.7	160.6	187.7	February "
መጋቢት 2002	178.7	163.2	163.2	218.4	161.0	213.6	184.7	164.1	308.5	170.9	189.8	212.3	160.6	195.2	March "
ግድሃት 2002	181.5	159.9	159.9	219.5	169.1	212.8	194.2	175.6	330.0	175.6	195.7	215.7	160.6	206.8	April "
ግንቦት 2002	179.1	150.1	161.0	221.6	170.5	195.6	202.7	156.1	394.9	183.3	194.4	210.0	162.2	210.6	May "

ወንጠራዥ ገለጻ፡- ጠቅላላ የምግብ ክፍሎች የ ሽግግር ዋጋ መመዘኛ ሊገደድበት ለድረጃዎ አስተዳደር ካውንስል

ታህሳስ 1999 = 100

Table 7b: Consumer Price Index of Total Food and Its Components for the Dire Dawa Administrative Council

December 2006 = 100

ወርና ዓመት	ጠቅላላ የምግብ	Cereals	FOOD TAKEN AT HOME											Food taken away from home	Month and Year	
			Pulses	Bread and other Prepared Food	Meat	Milk, Cheese and Egg	Oils and Fats	Vegetables and Fruits	Spices	Potatoes, Other Tubers and Stems	Coffee (beans, whole) and Tea Leaves	Other Food Items	Milling Charges			
ታህሳስ 1999	100.0	100.0	100.0	100.0	100.0	100.0	100.0	100.0	100.0	100.0	100.0	100.0	100.0	100.0	100.0	December 2006
ሐምሌ 1999 - ሰኔ 2000	135.4	140.9	148.3	127.9	107.8	118.5	151.7	132.9	353.5	167.6	133.9	95.4	90.7	114.7	114.7	July 2007 - June 2008
ሐምሌ 2000 - ሰኔ 2001	199.5	240.3	197.8	236.8	130.0	177.9	183.5	183.0	298.6	221.9	161.8	114.0	95.5	176.8	176.8	July 2008 - June 2009
2000																2008/2009
ግንቦት 2001	198.4	228.8	191.7	247.4	132.4	189.3	178.7	220.1	164.5	205.0	164.7	116.0	95.3	186.9	186.9	May "
ሰኔ 2001	198.0	229.5	188.1	248.0	137.8	202.2	177.6	228.5	165.6	201.7	154.9	117.7	95.3	186.5	186.5	June "
2002																2009/2010
ሐምሌ 2001	198.4	229.2	187.5	244.9	140.9	194.1	176.0	218.5	204.2	214.0	165.4	116.5	104.9	172.7	172.7	July 2009
ነሐሴ 2001	202.4	233.9	186.6	249.4	143.3	200.5	175.9	232.4	171.3	206.2	165.6	116.4	104.9	192.9	192.9	August "
መስከረም 2002	204.7	231.9	189.8	247.4	141.4	211.2	177.4	247.5	173.7	189.3	181.1	116.6	108.0	187.4	187.4	September "
ጥቅምት 2002	200.9	231.7	188.6	240.2	134.2	208.7	173.3	189.7	179.2	177.0	193.0	116.6	100.2	186.7	186.7	October "
ዳር 2002	197.4	224.8	183.4	240.5	132.5	220.4	175.4	157.6	196.8	150.6	197.4	116.8	104.9	175.8	175.8	November "
ታህሳስ 2002	195.3	219.7	185.3	239.3	130.2	219.4	174.6	160.3	215.5	155.8	186.4	117.2	104.9	182.2	182.2	December "
ጥር 2002	199.2	222.8	183.3	243.2	137.3	216.7	174.6	179.6	203.9	163.8	195.2	117.3	104.9	183.8	183.8	January 2010
የካቲት 2002	198.3	214.9	184.1	244.8	138.7	217.4	177.4	181.1	200.3	195.8	195.1	117.3	104.9	185.9	185.9	February "
መጋቢት 2002	203.6	215.0	191.3	240.9	140.4	214.3	186.8	213.7	230.6	234.2	196.5	117.3	104.9	207.0	207.0	March "
ጊዮርጊያ 2002	202.4	211.6	194.0	241.6	148.4	201.6	180.7	214.6	311.4	214.8	196.4	117.3	104.9	189.7	189.7	April "
ግንቦት 2002	203.8	206.2	197.6	240.2	161.8	185.6	190.4	209.2	301.1	230.9	211.2	117.3	104.9	195.1	195.1	May "

ሠንጠረዥ 8ሐ:- ጠቅላላ የምግብና የምግብ ክፍሎች የ ሽግግር ዋጋ መመዘኛ ሊገደክህ ሊጋምብላ ሕዝቦች ክልላዊ መገገሥት

ታህሳስ 1999 = 100

Table 8b: Consumer Price Index of Total Food and Its Components for the Gambela Peoples Regional State

December 2006 = 100

ወርና ዓመት	ጠቅላላ ምግብ	ጸሐይ	በቤት ውስጥ የተወሰዱ የምግብ ዓይነቶች											ጠቅላላ የተወሰዱ ምግቦች	ክቢት ወ-ወረዳ
			ጥራጥራ	ዳቦና ሌሎች የተዘጋጁ ምግቦች	ሥጋ	ወተት፣ ዓይብና አንቁላል	ዘይትና ቅባቶች	አትክልትና ፍራፍራ	ቅመግ ቅመም	ድንችና ሌሎች ሥራሥሮች	ያልተቆሳ ቡናና ሻይ ቅጠል	ሌሎች ምግቦች	የግብረ-ጫ አገልግሎት		
Food Total	Cereals	Pulses	Bread and other Prepared Food	Meat	Milk, Cheese and Egg	Oils and Fats	Vegetables and Fruits	Spices	Potatoes, Other Tubers and Stems	Coffee (beans, whole) and Tea Leaves	Other Food Items	Milling Charges	Food taken away from home	Month and Year	
ታህሳስ 1999	100.0	100.0	100.0	100.0	100.0	100.0	100.0	100.0	100.0	100.0	100.0	100.0	100.0	100.0	December 2006
ሐምሌ 1999 - ሰኔ 2000	133.8	124.8	141.2	167.1	131.8	131.5	150.1	138.5	411.3	142.3	124.0	112.4	110.4	133.2	July 2007 - June 2008
ሐምሌ 2000 - ሰኔ 2001	226.8	253.3	294.1	360.5	153.4	201.1	167.9	224.5	313.5	219.5	122.9	165.6	126.7	167.0	July 2008 - June 2009
2000															2008/2009
ግንቦት 2001	212.9	221.0	307.7	361.7	154.8	219.6	165.5	245.7	221.2	196.4	113.7	173.7	122.3	166.8	May "
ሰኔ 2001	220.3	231.2	307.6	371.8	156.7	222.6	163.9	261.2	217.5	197.2	116.9	180.5	115.5	167.7	June "
2002															2009/2010
ሐምሌ 2001	230.0	252.7	306.8	378.3	161.7	227.4	157.4	256.4	217.5	168.4	125.0	184.0	115.5	167.4	July 2009
ክሐሴ 2001	232.7	258.3	313.3	355.9	164.1	227.5	158.9	253.1	146.0	182.6	135.2	183.9	115.5	167.7	August "
መስከረም 2002	221.4	229.9	300.0	375.1	165.7	231.8	162.1	260.9	146.0	196.0	159.2	179.2	115.5	168.9	September "
ጥቅምት 2002	208.4	202.1	278.7	374.8	164.3	229.7	166.6	255.8	170.3	230.8	167.8	186.3	131.6	169.6	October "
ዳር 2002	203.0	190.6	282.9	374.2	168.1	240.2	164.8	256.1	182.5	200.4	172.2	184.3	131.6	168.9	November "
ታህሳስ 2002	200.8	188.8	290.8	368.0	165.8	246.6	164.2	244.4	170.3	205.5	160.3	193.0	131.6	175.1	December "
ጥር 2002	201.6	192.1	298.8	369.2	166.4	254.6	166.6	238.3	170.3	197.2	148.6	190.5	115.5	175.7	January 2010
የካቲት 2002	199.5	184.5	310.4	372.4	167.7	273.4	166.0	234.8	206.8	200.8	151.2	185.8	129.1	173.2	February "
መጋቢት 2002	189.9	155.8	260.9	365.1	167.2	248.9	165.9	307.7	206.8	184.6	148.6	194.0	129.1	196.4	March "
ጊዮርጊያ 2002	188.7	147.0	260.5	366.3	176.7	258.7	171.5	306.6	267.6	189.3	152.6	206.4	129.1	182.1	April "
ግንቦት 2002	194.4	155.2	274.1	383.4	201.8	294.9	175.2	274.5	271.7	188.9	151.1	194.9	134.0	182.1	May "

ሠንጠረዥ 9ሀ፡- ጠቅላላ የምግብና የምግብ ክፍሎች የ ሽግግር ዋጋ መመዘኛ ሊገደክስ ለሐረሪ ክልላዊ መንግሥት  
 ታህሳስ 1999 = 100

Table 9b: Consumer Price Index of Total Food and Its Components for the Harari People Regional State

December 2006 = 100

ወርና ዓመት	ጠቅላላ የምግብ	ጸሃላ	በቤት ውስጥ የተወሰኑ የምግብ ዓይነቶች											ጠቅላላ የተወሰኑ የምግቦች	ክቢት ወ-ወረዳ
			ጥራጥራ	ዳቦና ሌሎች የተዘጋጁ የምግቦች	ሥጋ	ወተት+ ዓይብና ለንቁላል	ዘይትና ቅባቶች	አትክልትና ፍራፍራ	ቅመግ ቅመም	ድገትና ሌሎች ሥራሥርዕች	ያልተቆሳ ቡናና ሻይ ቅጠል	ሌሎች የምግቦች	የግብረ-ጫ አገልግሎት		
Food Total	Cereals	Pulses	Bread and other Prepared Food	Meat	Milk,Cheese and Egg	Oils and Fats	Vegetables and Fruits	Spices	Potatoes, Other Tubers and Stems	Coffee (beans, whole) and Tea Leaves	Other Food Items	Milling Charges	Food taken away from home	Month and Year	
ታህሳስ 1999	100.0	100.0	100.0	100.0	100.0	100.0	100.0	100.0	100.0	100.0	100.0	100.0	100.0	100.0	December 2006
ሐምሌ 1999 - ሰኔ 2000	130.4	128.3	129.6	124.0	112.4	120.7	160.5	154.9	312.5	182.1	119.6	101.4	101.9	123.1	July 2007 - June 2008
ሐምሌ 2000 - ሰኔ 2001	205.1	228.0	164.6	244.8	141.2	154.9	191.3	171.7	285.4	227.0	216.9	120.4	125.9	177.8	July 2008 - June 2009
2000															2008/2009
ጥቅምት 2001	202.6	213.3	169.5	240.1	140.2	154.3	178.5	205.7	178.0	175.6	238.2	123.8	133.3	178.7	May "
ሰኔ 2001	206.5	219.5	166.4	229.2	148.8	157.3	177.5	211.3	154.4	166.7	251.7	122.2	133.3	188.3	June "
2002															2009/2010
ሐምሌ 2001	209.7	219.0	170.6	227.2	141.1	155.1	176.9	185.0	167.6	180.0	278.9	124.6	133.3	181.8	July 2009
ኦገስት 2001	203.6	219.8	179.1	232.6	149.1	168.7	172.0	202.6	175.8	143.3	233.1	123.0	133.3	186.6	August "
መስከረም 2002	202.0	218.8	178.3	235.4	151.2	153.4	175.0	214.9	148.5	161.7	223.8	123.0	133.3	189.1	September "
ጥቅምት 2002	208.9	214.8	162.1	224.4	149.1	160.0	176.6	197.8	158.0	166.7	278.9	122.2	133.3	186.6	October "
ኅዳር 2002	200.1	213.6	162.1	220.0	148.8	159.3	177.6	190.6	161.6	161.7	238.7	122.2	138.4	185.2	November "
ታህሳስ 2002	209.0	210.0	164.6	218.1	145.8	158.7	179.1	188.9	171.8	152.2	291.4	122.2	138.4	191.6	December "
ጥር 2002	210.6	209.5	167.2	223.6	149.0	157.7	179.7	194.4	187.2	160.6	291.0	122.2	138.4	196.3	January 2010
የካቲት 2002	212.2	208.7	170.6	220.8	151.7	157.2	191.8	185.0	180.0	186.7	300.4	123.0	138.4	189.6	February "
መጋቢት 2002	218.1	200.6	171.2	217.7	151.8	157.0	195.7	185.6	201.5	217.2	339.6	123.0	138.4	195.8	March "
ግንቦት 2002	213.5	199.5	175.3	214.3	153.3	158.4	195.4	202.5	245.3	184.4	310.7	123.8	138.4	197.6	April "
ግንቦት 2002	218.1	201.0	173.5	210.5	157.7	154.9	201.4	213.0	216.5	207.8	331.7	123.0	138.4	197.4	May "



ሠንጠረዥ 10A:- ጠቅላላ የምግብና የምግብ ክፍሎች የ ሽግግር ዋጋ መመዘኛ ሊንደክስ ለአርጊያ ክልል መገንጠያ

ታህሳስ 1999 = 100

Table 10b: Consumer Price Index of Total Food and Its Components for the Oromiya Regional State

December 2006 = 100

ወርና ዓመት	ጠቅላላ የምግብ	አሀል	በቤት ውስጥ የተወሰዱ የምግብ ዓይነቶች											ጠቅላላ የተወሰዱ የምግቦች	ክቢት ወ-ወረዳ
			ጥራጥራ	ዳቦና ሌሎች የተዘጋጁ የምግቦች	ሥጋ	ወተት፣ ዓይብና አንቁላል	ዘይትና ቅባቶች	አትክልትና ፍራፍራ	ቅመግ ቅመም	ድንችና ሌሎች ሥራሥሮች	ያልተቆሳ ቡናና ሻይ ቅጠል	ሌሎች የምግቦች	የግብረ-ጫ አገልግሎት		
Food Total	Cereals	Pulses	Bread and other Prepared Food	Meat	Milk, Cheese and Egg	Oils and Fats	Vegetables and Fruits	Spices	Potatoes, Other Tubers and Stems	Coffee (beans, whole) and Tea Leaves	Other Food Items	Milling Charges	Food taken away from home	Month and Year	
ታህሳስ 1999	100.0	100.0	100.0	100.0	100.0	100.0	100.0	100.0	100.0	100.0	100.0	100.0	100.0	100.0	December 2006
ሐምሌ 1999 - ሰኔ 2000	138.7	137.3	127.0	147.9	119.9	116.4	151.9	147.1	379.6	134.7	121.9	102.5	118.2	122.6	July 2007 - June 2008
ሐምሌ 2000 - ሰኔ 2001	202.0	242.8	175.2	238.0	152.0	155.2	163.5	176.6	314.2	204.1	142.0	161.6	133.9	156.2	July 2008 - June 2009
2000															2008/2009
ግንቦት 2001	189.4	208.3	181.5	234.8	156.1	168.5	153.0	211.2	190.9	213.9	149.1	184.9	141.1	165.7	May "
ሰኔ 2001	194.5	215.9	177.0	237.8	154.3	174.9	149.7	216.9	175.0	241.6	149.2	183.7	144.9	168.7	June "
2002															2009/2010
ሐምሌ 2001	192.7	221.1	176.5	239.5	154.6	169.1	149.9	178.7	205.5	193.5	154.6	188.1	144.9	169.7	July 2009
ኦገስት 2001	192.2	221.3	168.2	238.8	156.2	167.2	156.1	181.2	195.1	182.2	158.5	185.9	146.9	172.2	August "
መስከረም 2002	192.4	213.0	172.6	242.3	166.1	175.4	162.4	198.0	189.9	194.1	161.1	187.7	151.1	176.6	September "
ጥቅምት 2002	184.1	194.0	170.5	246.0	160.6	171.1	160.8	187.3	200.5	188.5	171.1	170.9	149.0	179.1	October "
ኅዳር 2002	185.0	193.8	168.8	246.0	158.7	170.1	156.4	170.3	225.8	196.4	174.4	194.0	154.7	180.5	November "
ታህሳስ 2002	184.4	190.6	168.1	246.5	153.5	170.8	155.1	173.8	237.6	199.8	174.5	197.2	160.6	181.7	December "
ጥር 2002	186.3	189.9	166.2	260.0	157.2	182.8	156.6	181.8	233.9	208.9	175.5	199.8	158.1	182.0	January 2010
የካቲት 2002	187.1	187.1	174.9	252.5	159.9	177.4	159.6	204.5	244.1	202.3	185.2	204.4	160.3	178.1	February "
መጋቢት 2002	186.6	180.6	182.1	255.7	167.4	175.1	159.4	217.1	300.3	204.9	172.2	209.9	159.9	187.0	March "
ጊዮርጊያ 2002	186.4	174.6	181.7	248.5	167.7	181.9	167.8	220.2	311.0	213.8	172.8	221.0	164.9	189.4	April "
ግንቦት 2002	186.9	174.1	191.4	250.9	160.7	187.3	170.8	200.5	332.3	213.1	174.7	205.1	175.8	190.5	May "

ሠንጠረዥ 11ላ:- ጠቅላላ የምግብና የምግብ ክፍሎች የ ሽግግር ዋጋ መመዘኛ ኢንዱስትሪ ለደብዳቤ ክልል መገንጠያ

ታህሳስ 1999 = 100

Table 11b: Consumer Price Index of Total Food and Its Components for the SNNP Regional State

December 2006 = 100

ወርና ዓመት	ጠቅላላ የምግብ	Cereals	FOOD TAKEN AT HOME											Food taken away from home	Month and Year	
			Pulses	Bread and other Prepared Food	Meat	Milk, Cheese and Egg	Oils and Fats	Vegetables and Fruits	Spices	Potatoes, Other Tubers and Stems	Coffee (beans, whole) and Tea Leaves	Other Food Items	Milling Charges			
ታህሳስ 1999	100.0	100.0	100.0	100.0	100.0	100.0	100.0	100.0	100.0	100.0	100.0	100.0	100.0	100.0	100.0	December 2006
ሐምሌ 1999 - ሰኔ 2000	131.1	136.1	122.9	126.9	121.5	119.2	143.7	146.8	264.5	117.1	132.2	112.2	106.0	107.1	107.1	July 2007 - June 2008
ሐምሌ 2000 - ሰኔ 2001	189.3	237.2	156.7	220.2	152.6	159.1	167.3	156.8	227.9	173.1	145.0	175.6	121.2	127.3	127.3	July 2008 - June 2009
2000																2008/2009
ጥንቅት 2001	180.2	205.6	160.9	223.1	153.5	175.3	174.4	191.7	125.7	178.0	139.1	193.1	126.0	131.7	131.7	May "
ሰኔ 2001	182.1	209.6	163.3	225.0	156.8	174.2	171.7	195.8	126.8	176.3	143.1	190.2	124.8	132.9	132.9	June "
2002																2009/2010
ሐምሌ 2001	182.6	214.8	163.2	227.5	160.9	176.5	164.0	158.1	136.7	173.9	156.6	191.9	129.4	134.3	134.3	July 2009
ኔሐሴ 2001	184.5	217.9	165.0	233.2	162.9	180.6	164.5	160.1	131.9	168.6	170.3	193.0	131.6	137.8	137.8	August "
መስከረም 2002	181.4	194.2	165.0	234.2	162.9	188.8	172.1	172.7	140.8	178.2	192.9	196.0	130.9	140.5	140.5	September "
ጥቅምት 2002	182.8	190.1	165.3	230.6	165.1	190.5	171.2	182.4	158.7	188.9	184.5	201.3	134.6	142.8	142.8	October "
ዳር 2002	180.9	185.8	163.2	235.9	163.5	192.7	169.8	174.2	171.4	192.8	168.3	198.8	138.9	145.3	145.3	November "
ታህሳስ 2002	182.2	183.1	160.3	230.3	162.2	194.5	168.3	178.1	180.8	205.4	162.7	201.0	137.1	147.3	147.3	December "
ጥር 2002	183.5	188.2	159.4	229.2	164.4	202.0	170.5	176.2	182.8	202.8	156.6	205.5	142.5	148.2	148.2	January 2010
የካቲት 2002	181.2	177.7	160.7	232.8	163.7	204.6	166.4	190.0	206.5	199.8	163.2	207.0	140.3	147.3	147.3	February "
መጋቢት 2002	177.9	173.6	159.2	229.9	165.1	196.0	170.8	183.8	218.0	189.1	163.0	212.6	143.4	151.9	151.9	March "
ጊዮርጊያ 2002	179.2	173.7	158.8	228.7	171.8	210.1	178.4	182.1	223.8	190.2	163.2	217.7	142.9	151.8	151.8	April "
ግንቦት 2002	174.0	168.0	161.2	239.3	173.4	193.3	172.6	163.4	261.8	172.2	164.8	209.1	146.1	158.2	158.2	May "

ሠንጠረዥ 12ለ፡- ጠቅላላ የምግብ ክፍሎች የ ሽግግር ዋጋ መመዘኛ ኢንዱክስ ለሰግቢ ክልል መገንጠያ

ታህሳስ 1999 = 100

Table 12b: Consumer Price Index of Total Food and Its Components for the Somali Regional State

December 2006 = 100

ወርና ዓመት	ጠቅላላ የምግብ	Cereals	FOOD TAKEN AT HOME											Food taken away from home	Month and Year	
			Pulses	Bread and other Prepared Food	Meat	Milk, Cheese and Egg	Oils and Fats	Vegetables and Fruits	Spices	Potatoes, Other Tubers and Stems	Coffee (beans, whole) and Tea Leaves	Other Food Items	Milling Charges			
ታህሳስ 1999	100.0	100.0	100.0	100.0	100.0	100.0	100.0	100.0	100.0	100.0	100.0	100.0	100.0	100.0	100.0	December 2006
ሐምሌ 1999 - ሰኔ 2000	124.6	136.0	124.9	120.3	126.3	103.1	138.8	128.3	299.8	145.0	115.8	102.8	99.2	120.5	120.5	July 2007 - June 2008
ሐምሌ 2000 - ሰኔ 2001	195.9	246.5	175.9	207.5	167.3	171.8	175.4	163.7	272.0	220.7	149.0	152.1	110.4	157.8	157.8	July 2008 - June 2009
2000																2008/2009
ጥቅምት 2001	196.3	226.2	167.0	215.7	187.2	192.1	169.2	182.6	208.3	230.7	171.7	157.4	117.0	167.5	167.5	May "
ሰኔ 2001	203.8	230.0	172.1	206.0	180.1	201.6	170.3	204.4	175.0	199.1	202.7	157.2	124.3	175.6	175.6	June "
2002																2009/2010
ሐምሌ 2001	202.3	238.1	161.6	201.1	179.1	190.8	168.0	184.0	166.7	201.7	190.3	157.8	118.7	176.2	176.2	July 2009
ነሐሴ 2001	197.4	234.9	176.6	207.5	189.9	188.9	163.9	172.6	166.7	206.5	167.0	158.0	124.3	172.3	172.3	August "
መስከረም 2002	203.4	238.1	177.3	215.4	191.5	205.9	163.7	208.2	166.7	200.0	172.9	157.7	124.3	181.1	181.1	September "
ጥቅምት 2002	209.1	249.2	174.1	210.9	199.7	203.2	169.5	212.5	166.7	180.1	180.7	157.1	116.4	191.6	191.6	October "
ዳር 2002	199.7	232.4	168.2	213.1	203.6	191.7	167.7	182.7	183.3	204.3	171.9	157.6	115.9	193.8	193.8	November "
ታህሳስ 2002	199.8	228.2	171.6	223.7	198.1	190.6	171.1	154.9	200.0	175.8	182.4	158.0	119.9	197.1	197.1	December "
ጥር 2002	200.9	217.1	170.6	232.0	200.2	209.9	168.9	165.6	191.7	168.4	196.2	157.9	119.9	196.2	196.2	January 2010
የካቲት 2002	208.3	226.5	168.2	246.1	203.5	209.8	172.0	155.4	183.3	196.5	214.1	158.2	119.9	199.5	199.5	February "
መጋቢት 2002	204.7	225.0	176.0	242.1	197.5	208.2	180.9	162.6	183.3	186.1	194.7	158.3	119.9	200.7	200.7	March "
ግድሃ 2002	201.9	221.8	176.2	244.9	207.1	189.6	185.1	173.5	208.3	186.1	191.1	158.1	119.9	200.5	200.5	April "
ግንቦት 2002	201.5	220.8	186.1	228.9	228.5	179.3	181.2	186.9	244.4	189.6	195.7	158.0	119.9	202.0	202.0	May "

ሠንጠረዥ 13ሐ:- ጠቅላላ የምግብ ክፍሎች የ ሽግግር ዋጋ መመዘኛ ሊንደክስ ለትግራይ ክልላዊ መንግሥት

ታህሳስ 1999 = 100

Table 13b: Consumer Price Index of Total Food and Its Components for the Tigray Regional State

December 2006 = 100

ወርና ዓመት	ጠቅላላ ምግብ	Cereals	FOOD TAKEN AT HOME											ከቤት ውጪ የተወሰዱ ምግቦች	Month and Year	
			Pulses	Bread and other Prepared Food	Meat	Milk,Cheese and Egg	Oils and Fats	Vegetables and Fruits	Spices	Potatoes, Other Tubers and Stems	Coffee (beans, whole) and Tea Leaves	Other Food Items	Milling Charges			
ታህሳስ 1999	100.0	100.0	100.0	100.0	100.0	100.0	100.0	100.0	100.0	100.0	100.0	100.0	100.0	100.0	100.0	December 2006
ሐምሌ 1999 - ሰኔ 2000	143.4	138.5	129.3	126.5	122.8	114.8	166.5	122.5	345.0	149.0	127.1	104.2	113.7	124.7	124.7	July 2007 - June 2008
ሐምሌ 2000 - ሰኔ 2001	214.8	254.3	180.2	200.9	140.6	158.9	186.5	155.0	287.1	216.1	147.2	156.4	131.2	161.2	161.2	July 2008 - June 2009
2001																2008/2009
ግንቦት 2001	191.6	217.2	177.7	214.4	144.3	161.7	179.2	177.1	161.7	229.5	149.2	176.3	138.8	164.1	164.1	May "
ሰኔ 2001	194.3	221.5	173.0	216.1	149.2	171.8	174.9	169.6	163.6	236.6	151.8	177.5	143.1	169.7	169.7	June "
2002																2009/2010
ሐምሌ 2001	198.2	226.7	174.5	221.4	149.2	177.4	165.4	167.5	175.2	248.5	148.3	180.6	154.6	178.9	178.9	July 2009
ነሐሴ 2001	200.2	231.5	173.0	219.9	156.3	179.4	161.0	160.9	153.9	244.5	148.6	181.2	166.1	181.1	181.1	August "
መስከረም 2002	197.6	222.6	173.9	216.7	165.2	180.7	167.1	176.6	143.4	229.5	170.5	181.3	167.3	180.3	180.3	September "
ጥቅምት 2002	202.7	231.9	172.1	216.5	156.5	184.7	170.3	169.4	154.4	188.1	184.8	186.9	160.5	182.8	182.8	October "
ሐር 2002	199.7	225.5	170.7	215.9	151.2	190.9	172.4	153.2	164.7	178.0	196.6	190.9	165.1	183.3	183.3	November "
ታህሳስ 2002	197.3	219.2	176.0	219.5	150.2	180.8	168.1	144.4	166.2	185.9	205.6	203.5	159.4	191.3	191.3	December "
ጥር 2002	195.4	214.2	176.0	224.8	156.2	183.5	175.8	137.4	172.5	188.5	204.8	204.1	160.9	187.2	187.2	January 2010
የካቲት 2002	193.6	209.5	178.0	221.0	149.8	181.3	179.1	146.1	182.8	198.2	201.3	200.3	162.7	191.1	191.1	February "
መጋቢት 2002	196.4	212.1	177.9	226.4	145.7	177.4	179.1	154.2	208.0	224.7	203.1	200.0	161.8	192.7	192.7	March "
ጊዳር 2002	198.9	207.4	179.3	227.7	156.0	186.5	188.4	174.5	252.7	215.4	205.1	218.2	160.6	193.0	193.0	April "
ግንቦት 2002	200.8	208.4	180.8	228.3	165.0	195.2	198.8	164.9	256.8	200.4	204.3	215.5	169.9	193.5	193.5	May "