

በኢትዮጵያ ፌዴራላዊ ዲሞክራሲያዊ ሪፐብሊክ
 የማዕከላዊ ስታቲስቲክስ ኤጀንሲ

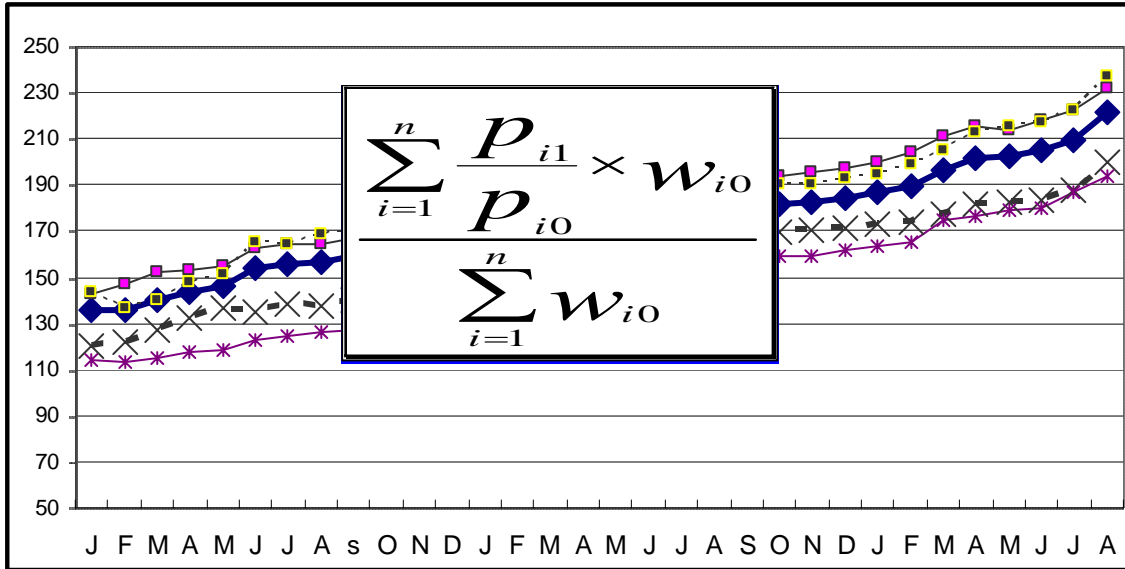
THE FEDERAL DEMOCRATIC REPUBLIC OF ETHIOPIA
 CENTRAL STATISTICAL AGENCY

የአገር አቀፍና የክልሎች የገንዘብ ዋጋ መመዘኛ ኢንዱክሶች
 ጳጳሪ ወር 2003 ዓ.ም.

[I de 1999 = 100]

መረጃ ቁጥር 44

COUNTRY AND REGIONAL LEVEL CONSUMER PRICE INDICES



[December 2006 =100]

For the month of May 2011

Information No. 44

Tel: 251-11-1 553011
 Fax: 251-11-1550334.
 Email: csa@ethionet.et

አዲስ አበባ
 ግንቦት 29 ነገ 2003 ፡.ሀ.
 ADDIS ABABA
 6 June 2011

- መግቢያ..... 1
- 3/4 \ a 0 0i uት Gት 7
- የዘንድሮውና የአምናው ተመሳሳይ ወሮች የገጽ ች ሞጋ መመዘኛ ጠቋሚ አህዝ ንፅፅር በአገር አቀፍ ደረጃ 10
- የዘንድሮውና የአምናው ተመሳሳይ ወሮች የገጽ ች ሞጋ መመዘኛ ጠቋሚ አህዝ ንፅፅር በአገር አቀፍና በክልሎች ደረጃ..... 11

የሠንጠረዦች ዝርዝር

- ሠንጠረዥ ሀ: በጥናቱ የተሸፈኑ ገበያዎችና በኢንዱስትሪ ማዕቀፍ የተካተቱ ዕቃዎችና በዕቃዎች/አገልግሎቶች ብዛት በክልል..... 2
- ሠንጠረዥ 1ሀ: ጠቅላላ 3/4ገጽ ች ሞጋ መመዘኛ ኢንዱስትሪና በስሩ የተካተቱ ክፍሎች በአገር አቀፍ ደረጃ..... 13
- ሠንጠረዥ 1ለ: ጠቅላላ ምግብና የምግብ ክፍሎች 3/4ገጽ ች ሞጋ መመዘኛ ኢንዱስትሪ በአገር አቀፍ ደረጃ..... 14
- ሠንጠረዥ 1በ: አጠቃላይ አጠቃላይ ስርዓት ች ሞጋ መመዘኛ ኢንዱስትሪ ስርዓት ች ሞጋ መመዘኛ ኢንዱስትሪ 15
- ሠንጠረዥ 2ሀ: ጠቅላላ 3/4ገጽ ች ሞጋ መመዘኛ ኢንዱስትሪ በአገር አቀፍና በክልሎች ደረጃ 16
- ሠንጠረዥ 2ለ: የምግብ ሞጋ መመዘኛ ኢንዱስትሪ ማጠቃለያ በአገር አቀፍ እና በክልሎች ደረጃ 18
- ሠንጠረዥ 3ሀ: ጠቅላላ 3/4ገጽ ች ሞጋ መመዘኛ ኢንዱስትሪና በስሩ የተካተቱ ክፍሎች ለአዲስ አበባ ከተማ መስተዳድር 20
- ሠንጠረዥ 3ለ: ጠቅላላ ምግብና የምግብ ክፍሎች 3/4ገጽ ች ሞጋ መመዘኛ ኢንዱስትሪ ለአዲስ አበባ ከተማ መስተዳድር 21
- ሠንጠረዥ 4ሀ: ጠቅላላ 3/4ገጽ ች ሞጋ መመዘኛ ኢንዱስትሪና በስሩ የተካተቱ ክፍሎች ለአፋር ክልላዊ መንግስት..... 22
- ሠንጠረዥ 4ለ: ጠቅላላ ምግብና የምግብ ክፍሎች 3/4ገጽ ች ሞጋ መመዘኛ ኢንዱስትሪ ለአፋር ክልላዊ መንግስት..... 23
- ሠንጠረዥ 5ሀ: ጠቅላላ 3/4ገጽ ች ሞጋ መመዘኛ ኢንዱስትሪና በስሩ የተካተቱ ክፍሎች ለአማራ ክልላዊ መንግስት..... 24
- ሠንጠረዥ 5ለ: ጠቅላላ ምግብና የምግብ ክፍሎች 3/4ገጽ ች ሞጋ መመዘኛ ኢንዱስትሪ ለአማራ ክልላዊ መንግስት..... 25
- ሠንጠረዥ 6ሀ: ጠቅላላ 3/4ገጽ ች ሞጋ መመዘኛ ኢንዱስትሪና በስሩ የተካተቱ ክፍሎች ለቤንሻንጉል-ጉሙዝ ክልላዊ መንግስት..... 26
- ሠንጠረዥ 6ለ: ጠቅላላ ምግብና የምግብ ክፍሎች 3/4ገጽ ች ሞጋ መመዘኛ ለቤንሻንጉል-ጉሙዝ ክልላዊ መንግስት..... 27

ሠንጠረዥ 7ሀ: ጠቅላላ $\frac{3}{4}$ gT ችች ^a ስ መመዘኛ ኤንደክስና በስሩ የተካተቱ ክፍሎች ለድሬደዋ አስተዳደር ካውንስል	28
ሠንጠረዥ 7ለ: ጠቅላላ ምግብና የምግብ ክፍሎች $\frac{3}{4}$ gT ችች ^a ስ መመዘኛ ለድሬደዋ አስተዳደር ካውንስል	29
ሠንጠረዥ 8ሀ: ጠቅላላ የgT ችች ዋጋ መመዘኛ ኤንደክስና በስሩ የተካተቱ ክፍሎች ለጋምቤላ ህዝቦች ክልላዊ መንግስት	30
ሠንጠረዥ 8ለ: ጠቅላላ ምግብና የምግብ ክፍሎች የ gT ችች ዋጋ መመዘኛ ለጋምቤላ ህዝቦች ክልላዊ መንግስት	31
ሠንጠረዥ 9ሀ: ጠቅላላ የgT ችች ዋጋ መመዘኛ ኤንደክስና በስሩ የተካተቱ ክፍሎች ለለሐረሪ ህዝብ ክልላዊ መንግስት	32
ሠንጠረዥ 9ለ: ጠቅላላ ምግብና የምግብ ክፍሎች የgT ችች ዋጋ መመዘኛ ኤንደክስ ለለሐረሪ ህዝብ ክልላዊ መንግስት	33
ሠንጠረዥ 10ሀ: ጠቅላላ የgT ችች ዋጋ መመዘኛ ኤንደክስና በስሩ የተካተቱ ክፍሎች ለአሮሚያ ክልላዊ መንግስት	34
ሠንጠረዥ 10ለ: ጠቅላላ ምግብና የምግብ ክፍሎች የgT ችች ዋጋ መመዘኛ ኤንደክስ ለአሮሚያ ክልላዊ መንግስት	35
ሠንጠረዥ 11ሀ: ጠቅላላ የgT ችች ዋጋ መመዘኛ ኤንደክስና በስሩ የተካተቱ ክፍሎች ለደ.ኢ.ብ.ብ. ክልላዊ መንግስት	36
ሠንጠረዥ 11ለ: ጠቅላላ ምግብና የምግብ ክፍሎች የgT ችች ዋጋ መመዘኛ ኤንደክስ ለደ.ኢ.ብ.ብ. ክልላዊ መንግስት	37
ሠንጠረዥ 12ሀ: ጠቅላላ የgT ችች ዋጋ መመዘኛ ኤንደክስና በስሩ የተካተቱ ክፍሎች ለሶማሌ ክልላዊ መንግስት	38
ሠንጠረዥ 12ለ: ጠቅላላ ምግብና የምግብ ክፍሎች የgT ችች ዋጋ መመዘኛ ኤንደክስ ለሶማሌ ክልላዊ መንግስት	39
ሠንጠረዥ 13ሀ: ጠቅላላ የ gT ችች ዋጋ መመዘኛ ኤንደክስና በስሩ የተካተቱ ክፍሎች ለትግራይ ክልላዊ መንግስት	38
ሠንጠረዥ 13ለ: ጠቅላላ ምግብና የምግብ ክፍሎች የ gT ችች ዋጋ መመዘኛ	41

CONTENTS

	Page
Introduction.....	4
Inflation Rate.....	8
Comparison of CPI Movements, Current Vs Last Year's Similar Months, at country Level.....	10
Comparison of CPI Movements, Current Vs Last Year's Similar Months, at country and Regional Levels.....	11

List of Tables

Table a: Number of Markets Covered and Basket of Commodities by Region.....	2
Table 1a: General Consumer Price Index and Its Components at Country Level.....	13
Table 1b: Consumer Price Index of Total Food and Its Components at Country Level.....	14
Table 1c: Consumer Price Index of House Rent, Construction Materials, Water, Fuel and Power and Its Components at Country Level.....	15
Table 2a: Summary of General Consumer Price Indices at Country and Regional Levels.....	16
Table 2b: Summary of Consumer Price Indices of Food at Country and Regional Levels.....	18
Table 3a: General Consumer Price Index and Its Components for the City of Addis Ababa Administration.....	20
Table 3b: Consumer Price Index of Total Food and Its Components for the City of Addis Ababa Administration.....	21
Table 4a: General Consumer Price Index and Its Components for the Afar Regional State.....	22
Table 4b: Consumer Price Index of Total Food and Its Components for the Afar Regional State.....	23

Table 5a: General Consumer Price Index and Its Components for the Amhara Regional State.....	24
Table 5b: Consumer Price Index of Total Food and Its Components for the Amhara Regional State.....	25
Table 6a: General Consumer Price Index and Its Components for the Benishangul-Gumuz Regional State.....	26
Table 6b: Consumer Price Index of Total Food and Its Components for the Benishangul-Gumuz Regional State.....	27
Table 7a: General Consumer Price Index and Its Components for the Dire Dawa Administrative Council.....	28
Table 7b: Consumer Price Index of Total Food and Its Components for the Dire Dawa Administrative Council.....	29
Table 8a: General Consumer Price Index and Its Components for the Gambela Peoples Regional State.....	30
Table 8b: Consumer Price Index of Total Food and Its Components for the Gambela Peoples Regional State.....	31
Table 9a: General Consumer Price Index and Its Components for the Harari Peoples Regional State.....	32
Table 9b: Consumer Price Index of Total Food and Its Components for the Harari Peoples Regional State.....	33
Table 10a: General Consumer Price Index and Its Components for the Oromia Regional State.....	34
Table 10b: Consumer Price Index of Total Food and Its Components for the Oromia Regional State.....	35
Table 11a: General Consumer Price Index and Its Components for the SNNP Regional State.....	36
Table 11b: Consumer Price Index of Total Food and Its Components for the SNNP Regional State.....	37
Table 12a: General Consumer Price Index and Its Components for the Somali Regional State.....	38
Table 12b: Consumer Price Index of Total Food and Its Components for the Somali Regional State.....	39
Table 13a: General Consumer Price Index and Its Components for the Tigray Regional State.....	40
Table 13b: Consumer Price Index of Total Food and Its Components for the Tigray Regional State.....	41

S Óu=Á

¼gT ƒƒª ãÒ SS²ƒª ½.³È;e TKት gT ƒƒª K}¨cƒª °n- ƒƒª ½NMÓKAƒƒª
 ƒƒªOKትን ½T½Á ¼ª Õ K-Ø KSK"ት ¼T½ÁÁ`Ñ- ¼u?} cw Ñu= òÐ ƒ
 SS²ƒª ½.³È;e ½w³ƒª.³ Ñ²? SW[ት ¼T½ÁÁ`Ñ- ¼u?} cw Ñu= òÐ ƒ
 ¨Ü Øƒª - Õ?ª uJ½- u?} cxƒª u°n- ƒƒª ÓMÒKAƒƒª KÁ v¨Ò-ት ¼S ƒƒª
 É`h SÖ³ƒª ¼¨p~ ¼ÑuÁª ãÒ LÁ½- :: u²=]p`ት -eØ ¼}¨} ~ት 12
 ½.³È;e ƒƒª (¼11 ; MKAƒƒª ¼½Ñ` ½kõ) SW[ት ÁÁ[Ñ-ት ¼T°³L© e e je
 ½!È³c= u1996/97 uÈ-ት -S-ት uSL ½Ñ]~ uƒS ƒª u} S [Ö< x ƒƒª
 Á"NHÁ-³ ¼u?} cw Ñu= òÐ ƒ ¨Ü Øƒª - Õ?ª ½- ::

ÁI Ide ¨¨ 1999 .U³ SW[ት ÁÁ[Ñ- (Ide 1999, 100) ¼gT ƒƒª ãÒ
 SS²ƒª ½.³È;e u;MM Á[Í c²ÒÍ u-Á½~ KG<K} ƒª Ñ²? ¼}²ÒÈ c=J³
 u IXY 1993 .U. SW[ት ÁÁ[Ñ- ¼gT ƒƒª SS²ƒª ½.³È;e ¼T}¨} " ½¨< ::
 ½½Ñ` ½kõ Á[Í ³1988 ÈUaƒª u½Ç-e ½uv ³}T Á[Í ÁÓV ³1955 .U ÈUa
 u½¨\ } SddÁ ½.³È;e ƒƒª ¼}²ÒÍ K}ÖnT> ƒª c-c^Ü Sq¼ ƒª-
 Á¨nM:: ½²= 12 ¼ª Õ SS²ƒª ³È;e ƒƒª u½Ñ]~ ¼T½Ñƒ 11 ; MKAƒƒª
 ƒ½Ñ` ½kñ³]p`ት Ü Ua ¼T½gõ½- ¼°n- ƒƒª ¼½NMÓKAƒƒª³ ; Uƒª-ት uÁ²<
 G<K-ትª ƒª ; òKAƒƒª ¼} ƒƒªOK< ƒƒª¨< : ½cU:- ¼UÓwƒª UÓw ½; ÁMJ½
 SS²ƒª ½.³È;e ƒƒª c=J³ UÓw ½; ÁMJ½ SS²ƒª ½.³È;e ³ÁÑƒª u10 ³®<e
 ; òKAƒƒª ÁƒƒªLM:: ½²= U SÖØ' c-Í ^ƒª -ትUvJ' Mweƒª SYTÁ' ¼u?ª-
 ³¨^Á' ¼u?ª SY]Á °n- ƒª -Hƒª ½.½´Í= ¼u?ª °n- ƒª ¼u?ª
 TeÑÝ - ƒª ¼u?ª Idl eƒª ¼u?ª W^} ƒª ÁS¨¨' Q; Uƒª SÖØ' ƒª SÑƒƒª
 S´ƒƒªª -ትUÍ`-ት ¼ÓM ³eI ƒª ¼ÓM sT> °n- ƒª ³Ç-G<U K?KAƒƒª °n- ƒª
 ½NMÓKAƒƒª c=J½ ¼G<K<U ; òKAƒƒª ½ÖnLÁ - Õ?ª ¼T½½½- ÁÓV ¼ÖpLL
 ãÒ- ƒª SS²ƒª ³È;e ½- ::

uG<K<U ; MKAƒƒª ¼ÖpLL ãÒ SS²ƒª ½.³È;e ƒƒª eK?ª ½w³ƒª.³ ¼S ƒƒª ¨Ü
 É`h ¼T½Á²- ¼UÓw SS²ƒª ½.³È;e c=J³ uG<K<U ¼UÓw ãÒ SS²ƒª
 ½.³È;e ƒƒªª ƒªª ; òKAƒƒª IM' Ø^Ø_ ' Çxƒª K?KAƒƒª ¼}²ÒÍ UÓxƒª Y Õ'
 ¨}ª-ª ®Áwƒª °³ LM' ²Á-ª pvƒªª ½-ª; M-ªª ö^ö_ ' pST pS U'
 ƒ-ªªª K?KAƒƒª Y ^Y aƒª ÁM} qL uƒƒª hÁ pÖM' K?KAƒƒª UÓxƒª ¼TeðÝ
 ½NMÓKA-ªª ³u?ª - Ü ¼}¨cÆ UÓxƒª ƒªª- ::

Kª Õ ½.³È;e ƒƒª ¼} S [Ö-ት °n- ƒªª ½NMÓKAƒƒª ¼ª Õ S [Í ¼T½cucu-
 u½µ½/ u½M½ ¨ [Ç uƒS ƒª u} S [Ö< ¨¨"Á ³} Vƒª -eØ vK< ¼ÑuÁ x ƒƒª
 ½- :: uS J½U ³ ƒ³ƒ³Æ µ³ G<K-ት ³} Vƒª (¼ÑuÁ x ƒƒª) ¼} S [Ö< c=J³
 ³Á²-G<U u ƒ³ƒ³Æ M½ ¨ [Ç ½³É ³}T (¼ÑuÁ x) uØƒª- ³Ç="}ª-
 } Á`ÖM::

KÖst> hG²< j ንዋነ። ልና- ነሽ` uÖst> hG²< T°kō } "ት} - uᵃ ናነት
¼T ጸላሽKÓK< °n- ችና አሽMÓKAቶች ¼S U[Ø ሸጻጻ ነ- :: Öst> አጠፈች
¼T ጸS W[~ት uአÖnLÃ uናS ልና uT ጸS [Ö< °n- ች LÃ c=J ን uÖst> hG²<
T°kō -eØ S ካተት ¼T ጸላሽv- °n S` cን Óን G<K?U KLM ¼T ጸM } Óv`
አጸጸKU:: ¼} KÁ¼ ¼አS ^[Ø ጸÈ S ÖkU uቻMU ¼T ጸS [Ö<ት °n- ች
K[ገገ U ሸጻ? ¼T ጸራቶ- } ፅላሽነት&ህክ} TT ን G<ግ። uሽuÁ LÃ ¼S ሸኝ ቶ-
ሸጻጻ' K?KAችን °n- ች ¼S` ቻM wnትና ቻK?KAች U` ቶች ፅ` ለላቶ-
} ` ርር]ነት S W[ት ለጸ[ሸ ንጻ=J ን ለፅKÖM:: uአÖnLÃ ¼} S [Ö<ት °n- ች
uum S Öን ¼S ሸኝ ቶ`< G<ግ። u¼` p~ } ` ርር]ነ ቶ` ልና °n- ችና
አሽMÓKAቶች UÉu<ን ¼S` ቻላቶ`< wnትን T [ÖሽØ ለeöMÖM::

Ide 1999 ፡.U. S W[ት ለጸ[ሸ`< ¼ገT ቶች ላ ፅ S S ጸኛ ኢንፎጅጅጅ አይነቶችና
ጸንጻንጸጸ ልና j ፅM ለK`< ¼` ሀ ፂ`h uሽገ 6 LÃ ሸ ለM:: ሸI WንÖ[»
ንጸT ጸጸd¼`< ¼UÓw ¼S ቶኛ ¼` ሀ ፂ`h Ide 1993 ፡.U. ቻህu[`< 60
uS ቶ` ለ 57 uS ቶ kንdM:: uአንገ\ ለÓV UÓw ነገ ለMገነ S S ጸኛ
ኢንፎጅጅጅ Ide 1993 ፡.U. ቻህu[`< 40 uS ቶ ¼` ሀ ፂ`h ለ 43 uS ቶ ቻፅ
wLM:: vÖnLÃ c= ሸ uG<K<U j MKላች ኢንፎጅጅጅ LÃ ¼UÓw ¼` ሀ ፂ`h
¼T ሸናp pናገ ለd¼ c=J ን UÓw ነገ ለMገኑ ¼` ሀ ፂ`h S Öነኛ ፂገት
ከdጸ M::

Introduction

The Consumer Price Index (CPI) measures the average change in the price paid by consumers for a fixed market basket of goods and services. It is usually based on household expenditure weights of the goods and services in the basket and their current market prices. The twelve CPI's (i.e., the CPI's of the 11 Regions and the CPI at Country Level) presented in this report are based on the results of the Household Income, Consumption and Expenditure Survey (HICES) conducted by the Central Statistical Agency in 2004/2005 from which expenditure weights are derived for major household goods and services of that period and adjusted using the December 2006 retail prices of the goods and services as a base period.

The December 2006 based CPI updates the previous CPI series (i.e. December 2000 based) and the newly selected baskets are more diversified and the weights are more accurate. It also showed various improvements and incorporates non-food index as an independent group. The new series is constructed for country as a whole and Regional States including Dire Dawa and the Addis Ababa City Administration. However, similar indices had been utilized at Addis Ababa Level since 1963 and at Country, Urban and Rural Levels since 1995/96 and in Country and Regional level since 2000.

All the twelve general indices are divided into two major groups that is food and non-food index. The non-food index has ten major groups each, namely: Beverages; Cigarettes and Tobacco; Clothing and Footwear; House Rent, Construction Materials, Water, and Fuel and Power; Furniture, Furnishing, Household Equipment and Operation; Medical Care and Health; Transport and Communication; Recreation, Entertainment and Education; Personal Care and Effects; and Miscellaneous Goods and Services. On the other hand, the Food Index has 13 sub-groups. These are: Cereals; Pulses; Bread and Other Prepared Food; Meat; Milk, Cheese and Eggs; Vegetables and

Fruits; Oil and Fats Spices; Potatoes, Other Tubers and Stems; Coffee Beans (whole) and Tea Leaves; Other Food Items; Milling Charges; and Food taken Away from Home. Furthermore, the new CPI based on December 2006 includes more detailed #Housing, Construction materials, Water and Fuel and Power; components.

For the construction of the current consumer price indices, up to date data on retail prices are collected in the purposely selected sample market places located in representative urban centers in each zone/special weredas of the country. Hence, a total of 119 market places were selected for the retail price survey. In each market place an enumerator is assigned to undertaking the data collection activities. The price data is collected from the 1st day through 15th days of European Calendar month under consideration. To calculate the monthly regional consumer price indices, geometric means of prices of the specific regions are used. The distribution of the market place of each region and items included in the basket of commodities are given on Table A on page 2.

An important factor in constructing a Consumer Price Index is to select the representative basket of goods and services. Including all consumption items into the market basket of goods and services is both cumbersome and unnecessarily costly in term of data collection and processing. Furthermore, it doesn't make sense to include an insignificant weight into an index basket which could not move the price relative up or downwards compared to the general market trend. As a result, basket of goods and services included in the regional baskets are determined by expenditure cut-off point. The total numbers of items included in the regional basket in the December 2006 based indices are given in Table A on page 2.

Country level CPI aggregates the regional group indices and the contributions of the five relatively big regions in terms of the magnitude of the expenditure account for more than 95 percent. These regions are Oromiya, Amhara, SNNP, Addis Ababa and Tigray. On the other hand, the contributions of the remaining regions to the

Country Level Consumer Price Index is about five percent.

According to the weights for food and non-food groups in Table B below, the December 2006 based CPI is about 57 percent of household expenditure spent on the food component, which declined by 3 percentage points as compared to the December 2000 based CPI. On the other hand, the expenditure on non-food components increased from 40 percent to 43 percent. This indicates that the economic situation in the country is going in the right direction as postulated by economic theory. Similarly, in this period larger regions resulted in a substantial decrease in the average weights for food, despite the increased food taken out of home. It was offset mainly by an increase in housing, construction materials, water and fuel and power, furnishing and transport and communication.

Table B: Major groups in the 2000 and 2006 based CPI and their weights at Country Level

No.	Major Group	Weights	
		2000 based CPI	2006 based CPI
1	Food	0.6008	0.5701
2	Non-Food	0.3992	0.4299
3	Beverages	0.0201	0.0202
4	Cigarettes and Tobacco	0.0051	0.0048
5	Clothing and Footwear	0.0926	0.0832
6	House Rent, Construction Materials, Water and Fuel and Power	0.1544	0.2056
7	Furniture, Furnishing, Household Equipment and Operation	0.0494	0.0375
8	Medical Care and Health	0.0120	0.0111
9	Transport and Communication	0.0199	0.0249
10	Recreation, Entertainment and Education	0.0101	0.0109
11	Personal Care and Effects	0.0092	0.0083
12	Miscellaneous Goods	0.0264	0.0234
	Total	1.000	1.000

May 2011 Country Level Inflation Rate

a) 12 months Moving Average Inflation at Country Level

As it is indicated in Table 'C' below the country level overall inflation rate (annual change based on 12 months Moving Average) rose by 15.5 percent in May 2011 as compared to the one observed in a similar period a year ago. The country level food inflation increased by 11.9 percent as compared to the one observed a year ago. The country level Non-food inflation rate increased by 21.1 percent in May 2011 as compared to the one observed in May 2010.

Among the food components, a rise in the indices of Cereals, Pulses Coffee, Pepper whole and other food items was observed in May 2011. In regard to the non-food components majority of them showed an increasing trend; specially, the indices of Clothing and Footwear, House Rent, Construction Materials and Fuel, Furniture and Furnishing, Transport and Personal care and effects are showing a relatively stable increasing trend.

b) Inflation based on comparison of Current vs. Last year's similar month at Country Level

Table (D) shows Inflation rate based on last year's similar month comparison. As can be seen from the table the May 2011 General year-on-year inflation has increased by 34.7 percent as compared to the one observed in May 2010. The 34.7 percent rise in General inflation rate is due to the fact that the General Consumer Price Index (CPI) of 244.1 percent observed in May 2011 was higher than the corresponding 181.2 percent General Consumer Price Index (CPI) observed in May 2010. The year-on-year Food inflation has increased by 40.7 percent in May 2011 as compared to the one observed in May 2010. The reason for the increase in the food Inflation rate was that the 261.3 percent Food Consumer Price Index (CPI) observed in May 2011 was greater than the corresponding 185.7 percent Food Consumer Price Index (CPI) observed in May 2010. The total price index of cereals in May 2011 has increased by 27.5 percent as compared to similar month last year which significantly contributed to the rise in the indices of Food and the General Consumer Price Index. Relative rises were observed in the indices of most of the components of food, especially, Teff, Wheat, Maize, Barely, Pulses, Butter, Coffee, Pepper whole and others in May 2011 as compared to May 2010. The Non-Food inflation also increased i.e by 26.3 percent in May 2011 as compared to the one observed in May 2010.

ሠንዕታ N: በአገሪቱ አጠቃላይ 12 ወር የሚሰራ የግብርና ጠቅላላ አጠቃላይ የግብርና ዕቅድ ዕቅድ ስር ወር ስር ስር

Table C: The Country Level 12 months Moving Average Inflation Rate

ዕድሜ ስር (ሰዓት)	የግብርና ዕቅድ ስር			Budget Year and months
	አጠቃላይ የግብርና ዕቅድ ስር	የግብርና ዕቅድ ስር	የግብርና ዕቅድ ስር	
<u>ዕድሜ ስር ስር</u>				Budget Year in Months
ሰዓት ስር (NUK? 1999 - ሰዓት 2000)	18.4	23.6	11.6	Annual Average (September 2007 – June 2008)
ሰዓት ስር (NUK? 2000 - ሰዓት 2001)	40.6	54.1	21.0	Annual Average (September 2008 – June 2009)
ሰዓት ስር (NUK? 2001 - ሰዓት 2002)	10.8	6.4	19.1	Annual Average (September 2009 – June 2010)
ግንቦት 2002	2.4	-5.7	17.8	May 2010
ሰኔ 2002	2.8	-5.4	18.2	June 2010
ግንቦት 2002	3.6	-4.5	18.4	July 2010
ከተማ 2002	4.4	-3.4	18.4	August 2010
ሰኔ 2003	5.4	-2.0	18.4	September 2010
ግንቦት 2003	6.7	-0.4	18.7	October 2010
ሰኔ 2003	7.5	0.8	18.6	November 2010
ግንቦት 2003	8.2	1.5	19.1	December 2010
ግንቦት 2003	9.0	2.6	19.4	January 2011
ግንቦት 2003	9.8	3.7	19.6	February 2011
ግንቦት 2003	11.3	5.8	20.0	March 2011
ግንቦት 2003	13.2	8.5	20.5	April 2011
ግንቦት 2003	15.5	11.9	21.1	May 2011
	Inflation Rate			
<i>Budget Year</i>	Overall Inflation rate	Food Inflation rate	Non-food Inflation rate	

ሠንዕታ ለገጠና ስለሚከናወነው ስርዓተ-ሥራ እና ለዓለም አቀፍ ስርዓተ-ሥራ ስልጠና ላይ ተገኝተዋል

K' Ø ʎî` uáñ` ákô ÁÍÍ T ÖnkÄ

Table D: Summary of Comparison of CPI Movements, Current vs. Last year's Similar Months at Country Level

ሁለት ወር ("")	ገጠናዎች ስርዓተ-ሥራ ስልጠና እና ለዓለም አቀፍ ስርዓተ-ሥራ ስልጠና			Budget Year and months
	አጠቃላይ ስርዓተ-ሥራ	የግል ስርዓተ-ሥራ	የግል ስርዓተ-ሥራ ለገጠና	
ሁለት ወር ለሁለት ወር				Budget Year in Months
የግል ስርዓተ-ሥራ ስልጠና (NUK? 1999 - ገንብ2000)	24.9	34.2	12.3	Annual Average (July 2007 – June 2008)
የግል ስርዓተ-ሥራ ስልጠና (NUK? 2000 - ገንብ2001)	38.7	48.6	24.1	Annual Average (July 2008 – June 2009)
የግል ስርዓተ-ሥራ ስልጠና (NUK? 2001 - ገንብ2002)	3.0	-5.0	18.1	Annual Average (July 2009 – June 2010)
ግንብት 2002	7.4	0.1	19.8	May 2010
ሰኔ 2002	7.3	0.0	19.8	June 2010
ሰኔ? 2002	5.7	-1.6	17.7	July 2010
ግንብት? 2002	5.3	-1.1	15.6	August 2010
ሰኔ? 2003	7.5	1.4	17.2	September 2010
ከሰኔ 2003	10.6	5.4	18.7	October 2010
ከሰኔ? 2003	10.2	5.8	16.7	November 2010
ገንብት 2003	14.5	8.9	22.9	December 2010
ገንብት 2003	17.7	13.6	23.7	January 2011
ገንብት? 2003	16.5	12.8	22.0	February 2011
ሰኔ 2003	25.0	25.5	24.3	March 2011
ሰኔ? 2003	29.5	32.2	25.6	April 2011
ግንብት 2003	34.7	40.7	26.3	May 2011
Budget Year	Inflation Rate based on last year's similar month comparison			
	Overall Inflation rate	Food Inflation rate	Non-food Inflation rate	

የዘንድሮውና የአምናው } S ddÄ `` aች
የችርቻሮ ዋጋ መመዘኛ ጠቋሚ አሀዝ ንፅፅር በአገር አቀፍና በክልሎች ደረጃ
Comparison of CPI Movements, Current vs Last year at Country and
Regional Levels

ቻህንዐ [» 2(G) S [ርት ንፅፅር ችግር` <
 ማዕከላዊ 2003 ሲሆን ማዕከላዊ አደጋ
 ማዕከላዊ ማቆሚያ ስሜት ለሆነው ስድስት ወራት
 ማዕከላዊ 2002 ሲሆን ማዕከላዊ አደጋ
 ስሜት ከሆነው ስድስት ወራት ለሆነው ስድስት ወራት
 ከአገር አቀፍ አይነት ስርዓት አይነት አይነት አይነት
 ለአገር አቀፍ አይነት ስርዓት ለአገር አቀፍ አይነት ስርዓት
 ለአገር አቀፍ አይነት ስርዓት ለአገር አቀፍ አይነት ስርዓት
 ለአገር አቀፍ አይነት ስርዓት ለአገር አቀፍ አይነት ስርዓት
 ለአገር አቀፍ አይነት ስርዓት ለአገር አቀፍ አይነት ስርዓት
 ለአገር አቀፍ አይነት ስርዓት ለአገር አቀፍ አይነት ስርዓት
 ለአገር አቀፍ አይነት ስርዓት ለአገር አቀፍ አይነት ስርዓት

Table 2(a) also displays that the May 2011 Country level General Consumer Price Index has increased by 34.7 percent as compared to May 2010. This increase was attributed to the rise in the indices of its constituent regions; namely: Addis Ababa 26.5 percent, Afar 26.9 percent, Amhara 31.7 percent, Benishangul Gumuz 37.9 percent, Dire Dawa 26.1 percent, Gambella 27.1 percent, Harari 29.2 percent, Oromia 37.6 percent, SNNP by 43.2 percent, Somali 34.0 percent and Tigray 19.2 percent

ሆንዐ [» 2(K) ንፅፅር ችግር` <
 አይነት አይነት አይነት አይነት
 አይነት አይነት አይነት አይነት
 አይነት አይነት አይነት አይነት
 አይነት አይነት አይነት አይነት
 አይነት አይነት አይነት አይነት
 አይነት አይነት አይነት አይነት
 አይነት አይነት አይነት አይነት
 አይነት አይነት አይነት አይነት
 አይነት አይነት አይነት አይነት
 አይነት አይነት አይነት አይነት

Table 2(b) reveals the rise in the food index by 40.7 percent is due to the rise in the indices of the regions namely: Addis Ababa 23.6 percent, Afar 23.8 percent, Amhara 33.6 percent, Benishangul Gumuz 51.5 percent, Dire Dawa 29.3 percent, Gambella 35.8 percent, Harari 32.2 percent, Oromia 44.9 percent, SNNP 57.2 percent, Somali 38.5 percent and Tigray 16.6 percent.

General CPI for Country Level and Major Regions

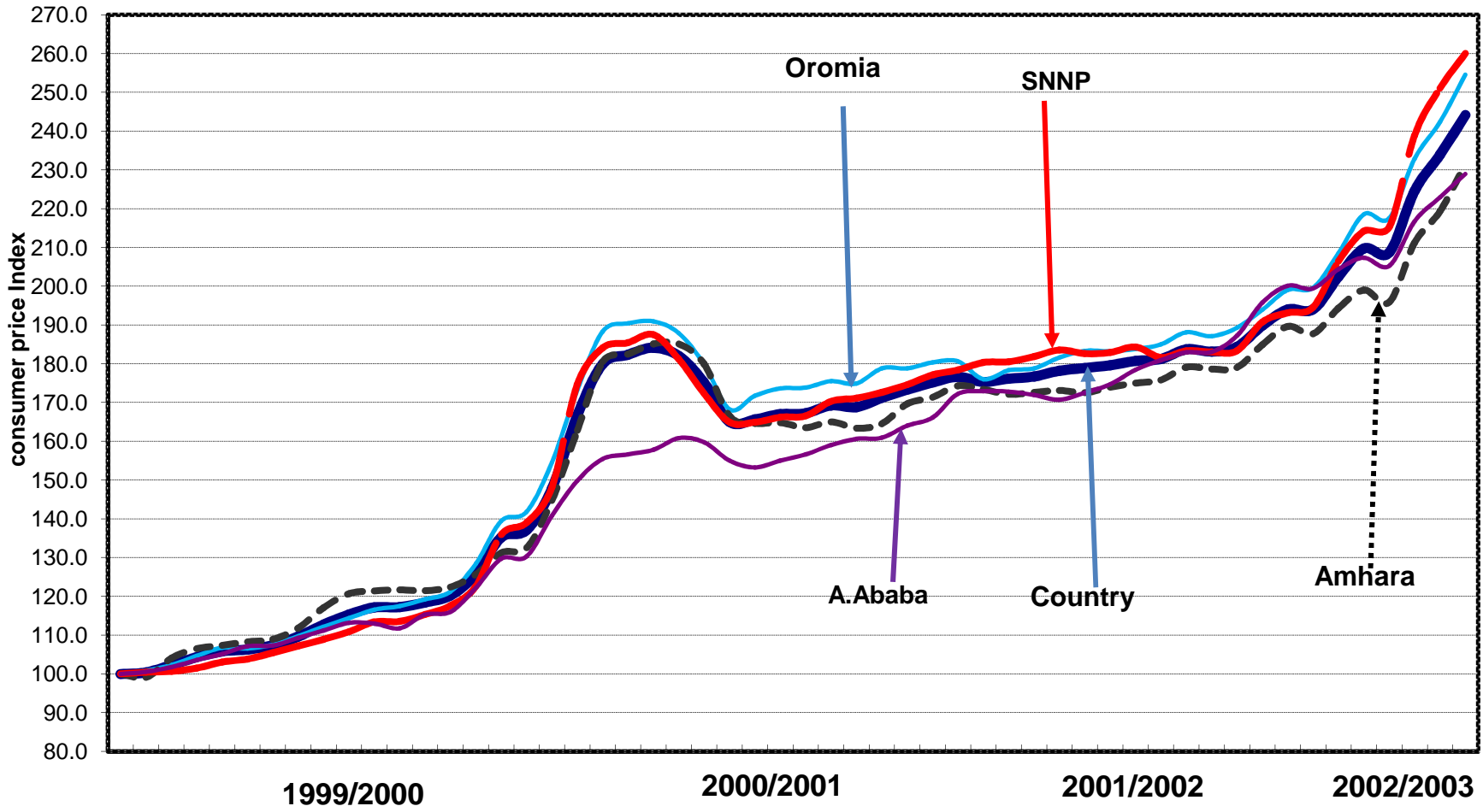
የሽማግሌ ዋጋ ኢንዱክሽን ለአገር አቀፍና ለዋና ዋና ክልሎች
2008/2009

2007/2008

2009/2010

2010/2011

D J F M A M J J A S O N D J F M A M J J A S O N D J F M A M J J A S O N D J F M A M



የሽማግሌ ዋጋ መመዘኛ ኢንዱክሽን

ሠንጠረዥ 1ሀ፡- ጠቅላላ የ ሽግግሮች ዋጋ መመዘኛ ኢንዱክስ በሥሩ የተሳተፉ ክፍሎች በአገር አቀፍ ደረጃ

ታህሳስ 1999 = 100

Table 1a: General Consumer Price Index and Its Components at Country Level

December 2006 = 100

ወርና ዓመት	ጠቅላላ ኢንዱክስ	ጠቅላላ የምግብ ኢንዱክስ	ጠቅላላ የምግብ ክፍል ኢንዱክስ	Non-food Consumer Price Index Components										Month and Year
				መጠጥ	ቢሻራና ትምብዌ	ልብስና መጫጫያ	የቤት ኪራይ፣ የቤት መሥሪያ ስቃዎች+ውሃ፣ ነጻጅናሃይል	የቤት ስቃዎች የቤት ማህበራዊ ስቃዎች የቤት ጭነትና የቤት ሠራተኛ ደመወዝ	ሕክምና	ትራንስፖርትና መገናኛ	መዝናኛና ትምህርት	የግል ንጽባናና የግል ጽግራ ስቃዎች	ሌሎች ስቃዎች	
General Index	Food Total	Non-Food Total	Beverages	Cigarettes and Tobacco	Clothing and Footwear	House Rent, Construction Materials, Water, and Fuel and Power	Furniture, Furnishings, Household Equipment and Operation	Medical Care and Health	Transport and Communication	Recreation, Entertainment and Education	Personal Care and Effects	Miscellaneous Goods		
ታህሳስ 1999	100.0	100.0	100.0	100.0	100.0	100.0	100.0	100.0	100.0	100.0	100.0	100.0	100.0	December 2006
ሐምሌ 1999 - ሰኔ 2000	126.9	137.2	113.3	113.5	107.8	117.0	112.0	125.5	111.9	105.3	106.9	112.6	104.7	July 2007 - June 2008
ሐምሌ 2000 - ሰኔ 2001	173.1	198.0	140.1	175.8	141.2	149.8	136.6	159.8	128.2	112.8	124.9	142.2	115.5	July 2008 - June 2009
ሐምሌ 2001 - ሰኔ 2002	177.9	187.2	165.6	187.1	169.4	188.5	159.1	190.9	149.2	134.9	144.6	181.8	126.4	July 2009 - June 2010
2002														2009/2010
ግንቦት 2002	181.2	185.7	175.3	190.5	183.2	204.1	166.9	204.1	158.4	145.3	150.5	193.0	130.4	May "
ሰኔ 2002	183.7	188.6	177.3	195.8	185.1	205.8	169.6	207.1	158.5	142.4	152.2	195.2	129.5	June "
2003														2010/2011
ሐምሌ 2002	183.1	186.8	178.3	194.4	182.8	207.6	170.8	207.8	158.2	142.8	152.4	197.2	130.2	July 2010
ክሐረ 2002	184.3	188.4	178.9	196.6	182.4	210.5	169.8	211.2	157.5	143.8	155.9	199.2	129.6	August "
መስከረም 2003	189.9	193.2	185.5	196.5	191.5	219.6	177.7	216.0	158.6	144.6	165.3	206.4	130.7	September "
ጥቅምት 2003	193.9	197.1	189.8	198.9	215.0	224.0	180.1	224.7	162.9	151.4	179.7	216.4	133.5	October "
ዳር 2003	194.1	196.7	190.6	198.7	221.7	227.3	177.8	229.0	166.1	156.8	183.6	228.9	136.4	November "
ታህሳስ 2003	202.4	202.1	202.7	202.2	225.6	239.0	195.7	235.1	168.1	162.6	181.8	235.3	136.5	December "
ጥር 2003	209.7	211.3	207.7	207.3	229.1	246.5	199.4	239.8	169.6	173.5	187.1	245.7	138.7	January 2011
የኅዳር 2003	208.7	209.4	207.9	201.7	230.4	253.9	197.2	237.6	168.4	177.1	186.9	245.1	139.1	February "
መጋቢት 2003	224.5	233.0	213.3	212.7	229.1	259.4	202.6	244.9	172.0	186.8	185.9	252.9	136.4	March "
ሚያዝያ 2003	233.9	246.2	217.7	217.5	232.1	265.2	204.9	251.6	172.3	201.8	190.8	254.9	141.2	April "
ግንቦት 2003	244.1	261.3	221.3	227.2	255.9	273.4	206.3	254.6	175.5	205.8	190.8	262.2	139.8	May "
	34.7	40.7	26.3	19.2	39.7	34.0	23.6	24.8	10.8	41.6	26.7	35.9	7.2	

ወንጠራዥ 20:- ጠቅላላ የ ሽግግር ዋጋ መመዘኛ ኢንዱስትሪ ስራዎች ስራዎች እና በክልሎች ደረጃ

ታህሳስ 1999 = 100

Table 2a: Summary of General Consumer Price Indices at Country and Regional Levels

December 2006=100

ወርና ዓመት	Reporting Level												Month and Year
	Eth.	A.A.	Afar	Amhara	B.Gumuz	D.Dawa	Gambela	Harari	Oromia	SNNP	Somalia	Tigray	
ታህሳስ 1999	100.0	100.0	100.0	100.0	100.0	100.0	100.0	100.0	100.0	100.0	100.0	100.0	December 2006
ሐምሌ 1999 - ሰኔ 2000	126.9	121.8	124.3	127.8	137.7	125.6	123.7	119.1	129.0	125.6	118.5	130.1	July 2007 - June 2008
ሐምሌ 2000 - ሰኔ 2001	173.1	157.6	158.3	172.1	193.9	167.6	193.2	169.5	179.5	173.9	170.8	183.0	July 2008 - June 2009
ሐምሌ 2001 - ሰኔ 2002	177.9	173.4	178.5	173.6	188.3	176.5	187.0	181.1	181.5	180.9	184.9	184.8	July 2009 - June 2010
2002													2009/2010
ግንቦት 2002	181.2	180.9	186.9	175.8	179.5	180.1	184.9	187.7	185.0	181.6	187.9	190.2	May "
ሰኔ 2002	183.7	182.9	185.9	179.1	183.3	183.0	185.3	186.8	188.1	183.3	191.7	190.4	June "
2003													2010/2011
ሐምሌ 2002	183.1	183.0	187.8	178.6	177.3	180.5	185.9	187.7	187.1	183.0	186.7	189.7	July 2010
ኔሐሴ 2002	184.3	187.2	188.9	179.0	178.8	181.2	185.5	190.6	189.3	183.3	191.1	188.9	August "
መስከረም 2003	189.9	195.8	198.9	184.9	180.9	188.4	191.2	199.8	193.9	190.7	198.5	191.2	September "
ጥቅምት 2003	193.9	200.1	201.4	189.6	187.1	194.5	195.0	202.3	199.0	193.1	207.4	193.8	October "
ዳር 2002	194.1	199.4	203.7	187.7	188.8	193.0	196.3	207.0	199.6	194.5	217.8	193.3	November "
ታህሳስ 2003	202.4	204.4	205.8	194.3	193.5	199.5	203.8	210.4	208.5	206.4	224.5	191.6	December "
ጥር 2003	209.7	207.3	216.8	199.0	201.8	203.6	211.6	220.2	218.5	214.2	226.5	199.6	January 2011
ፍቅራት 2003	208.7	205.7	214.5	195.8	198.1	200.9	199.2	227.8	217.5	215.3	229.2	195.8	February "
መጋቢት 2003	224.5	216.7	224.9	211.2	213.4	209.6	212.8	221.8	232.9	238.8	235.9	208.0	March "
ሚያዝያ 2003	233.9	222.9	234.4	219.3	233.8	220.2	225.5	237.2	242.4	251.0	250.5	216.5	April "
ግንቦት 2003	244.1	228.9	237.2	231.5	247.5	227.2	235.1	242.6	254.5	260.0	251.7	226.8	May "

34.7 26.5 26.9 31.7 37.9 26.1 27.1 29.2 37.6 43.2 34.0 19.2

ሠንጠረዥ 3 ሀ:- ጠቅላላ የሽግግር ዋጋ መመዘኛ ኢንዱስትሪ ቢሥሩ የተካተቱ ክፍሎች ለአዲስ አበባ ከተማ መስተዳድር

ታህሳስ 1999 = 100

Table 3a: General Consumer Price Index and Its Components for Addis Ababa City Administration
December 2006 = 100

ወርና ዓመት	ጠቅላላ ኢንዱስትሪ	ጠቅላላ የምግብ ኢንዱስትሪ	ጠቅላላ የምግብ ክፍል	Non-food Consumer Price Index Components											Month and Year	
				መጠጥ	ሲጃራና ትምብዥ	ልብና መዳጊያ	የቤት ኪራይና የቤት መሥሪያ ስቃዎች+ውሃና ነጻጅናሃይል	የቤት ስቃዎች የቤት ግንባታዎች የቤት ቁሳቁስና የቤት ሠራተኞች ደመወዝ	ሕክምና	ትራንስፖርትና መገናኛ	መገናኛና ትምህርት	የግል ገንባታና የግል ቋጫ ስቃዎች	ሌሎች ስቃዎች			
ታህሳስ 1999	100.0	100.0	100.0	100.0	100.0	100.0	100.0	100.0	100.0	100.0	100.0	100.0	100.0	100.0	100.0	December 2006
ሐምሌ 1999 - ሰኔ 2000	121.8	134.8	112.8	127.4	108.7	127.9	106.2	132.3	124.3	102.3	104.4	118.6	104.7	104.7	104.7	July 2007 - June 2008
ሐምሌ 2000 - ሰኔ 2001	157.6	190.7	134.5	177.8	156.8	164.4	120.6	165.7	146.0	114.9	121.7	146.6	124.8	124.8	124.8	July 2008 - June 2009
ሐምሌ 2001 - ሰኔ 2002	173.4	198.5	155.9	195.4	176.2	192.3	133.3	192.2	159.8	146.8	137.0	176.5	156.5	156.5	156.5	July 2009 - June 2010
2002																2009/2010
ግንቦት 2002	180.9	203.2	165.4	204.1	184.8	201.1	140.1	208.5	161.3	161.6	140.6	190.2	163.4	163.4	163.4	May "
ሰኔ 2002	182.9	209.5	164.5	214.5	186.8	204.4	137.7	210.1	164.2	155.8	141.6	190.9	158.0	158.0	158.0	June "
2003																2010/2011
ሐምሌ 2002	183.0	207.3	166.1	217.2	187.7	212.5	137.9	210.2	169.6	156.4	141.8	192.8	157.1	157.1	157.1	July 2010
ኦገስት 2002	187.2	215.5	167.6	216.3	188.6	217.1	138.4	213.1	168.2	156.1	145.1	193.8	163.7	163.7	163.7	August "
መስከረም 2003	195.8	226.6	174.4	218.1	197.7	234.8	142.7	220.2	162.6	158.2	159.4	199.5	169.8	169.8	169.8	September "
ጥቅምት 2003	200.1	226.9	181.4	220.2	227.7	241.5	147.8	230.1	169.9	168.6	165.8	208.8	170.6	170.6	170.6	October "
ጳጉሜ 2003	199.4	219.9	185.3	220.4	229.4	246.6	150.9	229.0	175.2	174.1	174.8	215.6	171.7	171.7	171.7	November "
ታህሳስ 2003	204.4	220.5	193.3	232.4	248.0	255.3	162.2	239.9	168.9	180.5	172.3	220.5	176.4	176.4	176.4	December "
ጥር 2003	207.3	221.6	197.3	218.5	226.2	259.4	165.7	238.2	169.0	188.6	174.2	257.4	179.7	179.7	179.7	January 2011
የካቲት 2003	205.7	213.9	200.1	215.9	233.2	261.8	167.3	252.6	175.5	189.1	174.1	256.9	182.6	182.6	182.6	February "
መጋቢት 2003	216.7	233.2	205.3	216.6	229.5	272.3	172.3	252.9	174.2	200.2	171.9	265.6	181.8	181.8	181.8	March "
ሚያዝያ 2003	222.9	239.4	211.4	218.6	234.0	280.6	173.5	264.3	177.9	215.3	172.0	271.6	188.1	188.1	188.1	April "
ግንቦት 2003	228.9	251.2	213.3	220.6	248.2	286.0	174.4	265.5	182.1	215.3	173.0	280.9	190.9	190.9	190.9	May "

ታህሳስ 1999 = 100

Table 4a: General Consumer Price Index and Its Components for the Afar Regional State

December 2006 = 100

ወርና ዓመት	ጠቅላላ ኢንዱስትሪ	ጠቅላላ ምግብ ኢንዱስትሪ	ጠቅላላ ምግብ ካልሆኑ ኢንዱስትሪ	Non-food Consumer Price Index Components											Month and Year
				መጠጥ	ሲጃራና ትምባሆ	ልብስና መጫሂያ	የቤት ኪራይና የቤት መሥሪያ ስቃዎች+ውሃና ነጻጅናሃይል	የቤት ስቃዎች የቤት ግንባራዎች የቤት ቁሳቁስና የቤት ሠራተኞች ደመወዝ	ሕክምና	ትራንስፖርትና መገናኛ	መገናኛና ትምህርት	የግል ገንቢናና የግል ቋጫ ስቃዎች	ሌሎች ስቃዎች		
	General Index	Food Total	Non-Food Total	Beverages	Cigarettes and Tobacco	Clothing and Footwear	House Rent, Construction Materials, Water, and Fuel and Power	Furniture, Furnishings, Household Equipment and Operation	Medical Care and Health	Transport and Communication	Recreation, Entertainment and Education	Personal Care and Effects	Miscellaneous Goods		
ታህሳስ 1999	100.0	100.0	100.0	100.0	100.0	100.0	100.0	100.0	100.0	100.0	100.0	100.0	100.0	December 2006	
ሐምሌ 1999 - ሰኔ 2000	124.3	136.1	110.2	109.2	102.5	114.5	107.3	113.8	100.6	124.4	92.2	107.2	101.5	July 2007 - June 2008	
ሐምሌ 2000 - ሰኔ 2001	158.3	189.5	121.3	136.1	131.5	130.8	110.0	143.4	109.7	112.6	107.8	122.5	106.9	July 2008 - June 2009	
ሐምሌ 2001 - ሰኔ 2002	178.5	203.8	148.4	162.8	141.3	151.3	144.9	177.8	127.0	132.5	112.1	131.8	112.1	July 2009 - June 2010	
2002														2009/2010	
ግንቦት 2002	186.9	210.1	159.4	170.6	157.1	159.3	159.3	189.2	135.8	144.5	115.6	133.1	117.7	May "	
ሰኔ 2002	185.9	208.5	159.0	176.6	156.1	152.9	162.1	192.3	120.8	138.0	118.1	134.3	117.0	June "	
2003														2010/2011	
ሐምሌ 2002	187.8	209.6	161.8	182.3	152.5	156.8	165.5	194.3	116.2	138.0	120.4	135.1	116.2	July 2010	
ኦገስት 2002	188.9	211.8	161.8	182.3	146.3	157.0	168.2	188.0	120.7	138.0	120.6	132.4	113.0	August "	
መስከረም 2003	198.9	220.8	172.9	183.7	146.3	158.6	191.3	195.4	124.5	138.0	120.7	132.1	114.3	September "	
ጥቅምት 2003	201.4	222.3	176.5	183.7	182.4	168.3	190.3	194.1	122.6	153.0	133.1	139.4	116.6	October "	
ጳር 2003	203.7	223.9	179.6	182.1	192.4	174.6	188.9	205.1	122.6	153.0	138.9	143.7	118.0	November "	
ታህሳስ 2003	205.8	222.8	185.6	192.6	192.4	169.7	206.0	201.0	119.5	166.6	137.9	144.9	118.4	December "	
ጥር 2003	216.8	237.5	192.2	199.5	226.1	175.1	210.9	214.8	135.3	173.0	137.6	144.5	117.0	January 2011	
የካቲት 2003	214.5	237.1	187.7	168.5	226.1	180.2	201.3	209.7	122.1	168.1	137.3	147.2	117.9	February "	
መጋቢት 2003	224.9	240.8	206.0	167.3	231.1	182.5	239.1	215.1	144.6	187.3	135.3	147.5	117.8	March "	
ሚያዝያ 2003	234.4	252.6	212.8	174.6	236.4	189.7	247.6	212.5	152.4	212.9	137.9	147.4	122.1	April "	
ግንቦት 2003	237.2	260.0	210.0	175.3	229.3	188.4	246.1	200.4	143.6	219.0	139.6	149.4	118.8	May "	

Table 5a: General Consumer Price Index and Its Components for the Amhara Regional State

December 2006 = 100

ወርና ዓመት	ጠቅላላ ኢንዱክስ	ጠቅላላ ምግብ ኢንዱክስ	ጠቅላላ ምግብ ክፍል	Non-food Consumer Price Index Components										Month and Year
				መጠጥ	ሲጃራና ትምባሆ	ላብስና መጫሊያ	የቤት ኪራይ፣ የቤት መሥሪያ ስቃዎች፣ውሃ፣ ነጻጅናፕይል	የቤት ስቃዎች የቤት ግንባታዎች የቤት ቁሳቁስና የቤት ሠራተኞች ደመወዝ	ሕክምና	ትራንስፖርትና መገናኛ	መዝናኛና ትምህርት	የግል ንጽባና ስቃዎች	ሌሎች ስቃዎች	
General Index	Food Total	Non-Food Total	Beverages	Cigarettes and Tobacco	Clothing and Footwear	House Rent, Construction Materials, Water, and Fuel and Power	Furniture, Furnishings, Household Equipment and Operation	Medical Care and Health	Transport and Communication	Recreation, Entertainment and Education	Personal Care and Effects	Miscellaneous Goods		
ታህሳስ 1999	100.0	100.0	100.0	100.0	100.0	100.0	100.0	100.0	100.0	100.0	100.0	100.0	100.0	December 2006
ሐምሌ 1999 - ሰኔ 2000	127.8	139.6	108.4	112.4	115.8	109.5	105.8	120.9	112.8	106.6	108.2	117.8	101.6	July 2007 - June 2008
ሐምሌ 2000 - ሰኔ 2001	172.1	198.7	128.4	198.7	154.5	132.4	118.5	156.1	124.2	113.2	127.4	148.3	103.4	July 2008 - June 2009
ሐምሌ 2001 - ሰኔ 2002	173.6	185.3	154.3	201.0	179.6	169.7	143.8	185.1	151.0	120.9	151.1	191.2	104.1	July 2009 - June 2010
2002														2009/2010
ግንቦት 2002	175.8	184.1	162.1	200.8	210.3	188.4	149.0	195.2	163.1	126.1	155.0	200.9	104.3	May "
ሰኔ 2002	179.1	188.9	162.9	203.3	206.5	187.1	150.3	196.5	160.4	124.3	160.1	202.4	104.3	June "
2003														2010/2011
ሐምሌ 2002	178.6	187.2	164.5	203.5	209.3	187.6	152.9	197.0	160.0	124.4	159.1	204.5	104.3	July 2010
ክለሴ 2002	179.0	186.7	166.4	204.8	209.3	192.6	153.8	199.3	161.9	124.5	161.6	207.7	104.3	August "
መስከረም 2003	184.9	190.3	176.0	204.7	218.1	198.6	166.6	203.9	167.0	124.3	185.0	219.4	104.3	September "
ጥቅምት 2003	189.6	193.8	182.6	204.6	234.5	206.1	173.9	210.3	167.0	127.5	187.5	235.6	104.5	October "
ዳር 2003	187.7	192.1	180.6	206.3	242.8	212.0	166.9	212.5	168.6	130.7	194.5	240.8	104.6	November "
ታህሳስ 2003	194.3	193.7	195.2	207.3	247.5	221.7	188.5	220.3	165.9	135.7	195.7	247.2	104.3	December "
ጥር 2003	199.0	199.1	198.8	210.4	247.3	229.7	190.0	222.7	166.9	160.9	194.8	259.9	103.0	January 2011
የካቲት 2003	195.8	194.1	198.7	206.8	246.5	235.7	187.9	225.2	165.3	161.2	188.9	262.3	102.9	February "
መጋቢት 2003	211.2	215.1	204.8	207.1	248.3	237.4	196.6	232.0	171.0	168.6	197.0	260.7	103.1	March "
ሚያዝያ 2003	219.3	228.3	204.4	212.3	251.3	244.8	192.6	233.5	169.3	176.7	201.9	254.3	103.2	April "
ግንቦት 2003	231.5	245.9	207.8	221.1	277.8	255.5	192.4	239.9	173.0	182.4	198.0	268.8	103.3	May "

ሠንጠረዥ 6ሀ:- ጠቅላላ የ ሽግግር ዋጋ መመዘኛ ኢንዱስትሪ ቢሮ የተካተቱ ክፍሎች ለቤኔሽንጎላ ጊዞክ ክልል መገንጠያ

ታህሳስ 1999 = 100

Table 6a: General Consumer Price Index and Its Components for the Benishangul Gumuz Regional State

December 2006 = 100

ወርና ዓመት	ጠቅላላ ኢንዱስትሪ	ጠቅላላ ምግብ ኢንዱስትሪ	ጠቅላላ ምግብ ነጥል ያልሆኑ ኢንዱስትሪ	Non-food Consumer Price Index Components										Month and Year	
				መጠጥ	ሲጃራና ትምባሆ	ልብና መጫጫ	የቤት ኪራይና የቤት መሥሪያ ስቃዎች+ውሃና ነጻጅና ሃይል	የቤት ስቃዎች የቤት ግንባታዎች የቤት ቁሳቁስና የቤት ሠራተኞች ደመወዝ	ሕክምና	ትራንስፖርትና መገናኛ	መዝናኛና ትምህርት	የግል ንጽባና ስቃዎች	ሌሎች ስቃዎች		
ታህሳስ 1999	100.0	100.0	100.0	100.0	100.0	100.0	100.0	100.0	100.0	100.0	100.0	100.0	100.0	100.0	December 2006
ሐምሌ 1999 - ሰኔ 2000	137.7	148.2	123.7	111.2	113.2	123.8	141.3	114.6	111.0	101.0	112.2	115.2	103.3	103.3	July 2007 - June 2008
ሐምሌ 2000 - ሰኔ 2001	193.9	226.1	151.4	150.0	148.3	156.2	159.4	158.1	143.4	100.7	158.5	146.5	112.4	112.4	July 2008 - June 2009
ሐምሌ 2001 - ሰኔ 2002	188.3	199.8	173.2	156.9	181.5	192.1	176.3	194.9	153.9	114.0	171.8	179.9	113.1	113.1	July 2009 - June 2010
2002															2009/2010
ግንቦት 2002	179.5	179.1	180.0	162.3	213.6	216.6	173.6	205.1	156.3	121.0	172.8	198.5	109.7	109.7	May "
ሰኔ 2002	183.3	180.7	186.8	164.2	211.0	215.7	190.7	209.8	147.3	119.0	183.6	197.1	110.9	110.9	June "
2003															2010/2011
ሐምሌ 2002	177.3	175.8	179.3	167.0	202.1	223.4	165.1	211.8	143.6	119.0	177.2	198.6	112.1	112.1	July 2010
ኔሐሴ 2002	178.8	174.1	185.1	167.6	206.2	236.9	170.5	219.9	151.9	119.0	179.3	195.9	110.7	110.7	August "
መስከረም 2003	180.9	172.1	192.5	166.1	208.8	242.0	179.3	238.2	160.4	119.0	190.1	195.7	111.0	111.0	September "
ጥቅምት 2003	187.1	177.8	199.5	165.5	238.1	253.4	187.6	240.7	160.9	123.2	193.4	226.6	111.0	111.0	October "
ዳር 2003	188.8	179.6	200.9	164.0	238.1	261.3	178.6	256.2	166.6	127.5	196.5	235.0	112.3	112.3	November "
ታህሳስ 2003	193.5	180.5	210.7	169.3	238.1	290.8	184.9	269.4	149.5	130.5	199.6	241.0	114.7	114.7	December "
ጥር 2003	201.8	194.0	212.1	182.4	238.1	289.4	185.3	260.6	163.6	134.3	203.2	253.5	118.8	118.8	January 2011
የካቲት 2003	198.1	192.4	205.5	168.2	238.1	286.3	172.3	264.7	161.6	134.3	193.6	251.1	117.6	117.6	February "
መጋቢት 2003	213.4	217.3	208.2	172.9	238.1	305.7	166.7	265.5	160.1	142.3	197.7	253.1	118.2	118.2	March "
ሚያዝያ 2003	233.8	248.5	214.4	178.8	238.1	311.1	168.3	278.5	156.0	156.4	203.7	280.2	122.3	122.3	April "
ግንቦት 2003	247.5	271.4	216.0	183.3	307.1	298.8	178.1	270.3	154.7	156.4	206.0	285.3	122.3	122.3	May "

ሠገጠረዥ ገሀ:- ጠቅላላ የ ሽግግር ዋጋ መመዘኛ ኢንዱስትሪ ቢሥሩ የተሳተፉ ክፍሎች ለድረ-ላዩ ለስተዳደር ካውንስል

ታህሳስ 1999 = 100

Table 7a: General Consumer Price Index and Its Components for the Dire Dawa Administrative Council

December 2006 = 100

ወርና ዓመት	ጠቅላላ ኢንዱስትሪ	ጠቅላላ የምግብ ኢንዱስትሪ	ጠቅላላ የምግብ ክፍል	Non-food Consumer Price Index Components										Month and Year	
				መጠጥ	ቢሻራና ትምባሆ	ላብስና መጫሊያ	የቤት ኪራይና የቤት መሥሪያ ስቃዎች+ውሃና ነጻጅናሃይል	የቤት ስቃዎች የቤት ግንባታዎች የቤት ቁሳቁስና የቤት ሠራተኛ ደመወዝ	ሕክምና	ትራንስፖርትና መገናኛ	መዝናኛና ትምህርት	የግል ንጽባናና የግል ቋሚ ስቃዎች	ሌሎች ስቃዎች		
ታህሳስ 1999	100.0	100.0	100.0	100.0	100.0	100.0	100.0	100.0	100.0	100.0	100.0	100.0	100.0	100.0	December 2006
ሐምሌ 1999 - ሰኔ 2000	125.6	135.4	115.6	113.2	101.2	109.2	120.9	124.5	115.8	105.5	116.8	108.2	102.9	102.9	July 2007 - June 2008
ሐምሌ 2000 - ሰኔ 2001	167.6	199.5	134.7	158.5	113.0	128.2	140.9	157.9	138.8	102.3	136.1	119.5	107.6	107.6	July 2008 - June 2009
ሐምሌ 2001 - ሰኔ 2002	176.5	201.2	151.0	168.6	142.1	145.6	153.6	189.1	149.4	106.6	154.7	133.5	120.8	120.8	July 2009 - June 2010
2002															2009/2010
ግንቦት 2002	180.1	203.8	155.8	176.7	170.4	148.4	157.1	201.4	148.8	108.9	158.4	137.2	127.1	127.1	May "
ሰኔ 2002	183.0	208.6	156.5	176.2	170.4	144.8	156.2	212.0	149.6	108.3	161.0	137.3	127.1	127.1	June "
2003															2010/2011
ሐምሌ 2002	180.5	204.7	155.6	175.7	185.9	148.2	156.2	203.9	152.1	108.3	149.8	140.9	127.1	127.1	July 2010
ክለሴ 2002	181.2	203.4	158.4	175.2	201.4	149.2	158.1	212.9	163.1	108.3	150.0	142.1	127.1	127.1	August "
መስከረም 2003	188.4	206.6	169.7	181.6	161.4	159.6	174.4	236.3	156.6	110.7	156.1	143.9	127.1	127.1	September "
ጥቅምት 2003	194.5	217.3	171.0	182.9	161.4	160.6	175.0	235.4	158.4	113.2	165.3	143.5	127.1	127.1	October "
ዳር 2003	193.0	211.5	174.0	178.8	212.3	163.9	177.1	239.1	150.9	114.6	172.2	146.7	127.1	127.1	November "
ታህሳስ 2003	199.5	219.6	178.7	220.1	196.0	162.6	191.0	228.5	164.6	115.3	185.5	146.8	127.1	127.1	December "
ጥር 2003	203.6	226.0	180.5	214.7	209.6	168.7	192.1	229.3	161.5	120.3	177.8	148.8	127.1	127.1	January 2011
የካቲት 2003	200.9	220.3	180.9	218.3	229.0	179.0	194.4	217.6	162.9	118.5	166.4	149.7	127.1	127.1	February "
መጋቢት 2003	209.6	234.8	183.7	217.0	222.2	180.5	200.3	218.0	168.5	122.1	166.4	150.6	127.1	127.1	March "
ሚያዝያ 2003	220.2	255.9	183.5	217.3	222.2	180.6	200.9	211.8	165.2	131.9	159.8	153.3	127.1	127.1	April "
ግንቦት 2003	227.2	263.4	189.9	218.5	234.0	183.5	204.6	219.0	202.5	144.9	164.5	156.2	127.1	127.1	May "

ሠንጠረዥ 80:- ጠቅላላ የ ሽያጭ ዋጋ መመዘኛ ኢንዱክሽን ቢሥሩ የተሳተፉ ክፍሎች ለጋምቤላ ሕዝቦች ክልል መገገሥት

ታህሳስ 1999 = 100

Table 8a: General Consumer Price Index and Its Components for the Gambela Peoples Regional State

December 2006 = 100

ወርና ዓመት	ጠቅላላ ኢንዱክሽን	ጠቅላላ ምግብ ኢንዱክሽን	ጠቅላላ ምግብ ክፍል ስፍራ	Non-food Consumer Price Index Components										Month and Year	
				መጠጥ	ሲጃራና ትምባሆ	ልብና መጫጫ	የቤት ኪራይ፣ የቤት መሥሪያ ስቃዎች+ውሃ፣ ነጻጅናሃይል	የቤት ስቃዎች የቤት ግንቢያዎች የቤት ቁሳቁስና የቤት ሠራተኛ ደመወዝ	ሕክምና	ትራንስፖርትና መገናኛ	መዝናኛና ትምህርት	የግል ንጽባናና የግል ቋጫ ስቃዎች	ሌሎች ስቃዎች		
ታህሳስ 1999	100.0	100.0	100.0	100.0	100.0	100.0	100.0	100.0	100.0	100.0	100.0	100.0	100.0	0.0	December 2006
ሐምሌ 1999 - ሰኔ 2000	123.7	133.8	111.2	120.8	107.8	108.3	107.6	123.5	116.4	105.9	108.4	103.5	0.0	July 2007 - June 2008	
ሐምሌ 2000 - ሰኔ 2001	193.2	226.8	151.5	193.5	134.2	140.8	145.5	173.5	130.6	112.4	138.6	114.1	0.0	July 2008 - June 2009	
ሐምሌ 2001 - ሰኔ 2002	187.0	205.5	164.0	204.0	163.9	145.7	156.9	182.5	155.0	131.7	172.0	120.3	0.0	July 2009 - June 2010	
2002															2009/2010
ግንቦት 2002	184.9	194.4	173.1	211.3	186.1	146.9	167.4	191.9	161.1	141.4	181.4	121.9	0.0	May "	
ሰኔ 2002	185.3	196.1	172.0	199.8	183.6	147.4	167.1	196.9	165.4	141.4	198.6	123.6	0.0	June "	
2003															2010/2011
ሐምሌ 2002	185.9	197.1	172.0	199.9	173.0	147.7	167.8	201.3	162.5	141.4	212.2	122.9	0.0	July 2010	
ኔሐሴ 2002	185.5	195.1	173.6	201.9	173.0	154.5	167.1	205.4	163.7	141.8	210.2	121.9	0.0	August "	
መስከረም 2003	191.2	201.6	178.1	200.8	180.8	157.4	174.1	209.7	162.8	146.7	215.3	122.6	0.0	September "	
ጥቅምት 2003	195.0	205.3	182.2	204.0	183.6	161.4	178.4	215.1	168.6	146.7	225.3	125.8	0.0	October "	
ዳር 2003	196.3	205.7	184.6	202.3	193.2	166.5	180.8	214.4	169.5	146.7	225.4	126.4	0.0	November "	
ታህሳስ 2003	203.8	215.2	189.5	205.7	213.3	173.5	180.8	222.2	176.1	146.7	234.2	129.1	0.0	December "	
ጥር 2003	211.6	225.8	194.1	225.4	210.9	175.9	181.3	230.9	176.2	146.9	245.9	131.0	0.0	January 2011	
የካቲት 2003	199.2	203.3	194.1	207.3	212.0	176.7	187.1	235.4	179.9	147.2	244.1	130.1	0.0	February "	
መጋቢት 2003	212.8	224.2	198.7	229.2	214.5	183.7	181.5	253.5	190.7	147.2	246.5	132.0	0.0	March "	
ሚያዝያ 2003	225.5	244.7	201.7	235.4	213.4	184.7	185.6	255.6	187.2	147.2	252.0	132.6	0.0	April "	
ግንቦት 2003	235.1	263.9	199.2	235.6	235.5	180.8	171.1	264.5	188.7	166.5	260.4	134.9	0.0	May "	

ሠንጠረዥ 9ሀ፡- ጠቅላላ የ ሽግግር ዋጋ መመዘኛ ኢንዱስትሪ ቢሥሩ የተካተቱ ክፍሎች ለሐረሬ ክልላዊ መንግሥት

ታህሳስ 1999 = 100

Table 9a: General Consumer Price Index and Its Components for the Harari People Regional State

December 2006 = 100

ወርና ዓመት	ጠቅላላ ኢንዱስትሪ	ጠቅላላ የምግብ ኢንዱስትሪ	ጠቅላላ የምግብ ክፍል	Non-food Consumer Price Index Components											Month and Year	
				መጠጥ	ቢሻራና ትምባሆ	ላብስና መጫጫያ	የቤት ኪራይ፣ የቤት መሥሪያ ስቃዎች፣ውሃ፣ ነጻጅናጥይል	የቤት ስቃዎች የቤት ግንባታዎች የቤት ቁሳቁስና የቤት ሠራተኞች ደመወዝ	ሕክምና	ትራንስፖርት መገናኛ	መዝናኛና ትምህርት	የግል ንጽባናና የግል ቋጫ ስቃዎች	ሌሎች ስቃዎች			
ታህሳስ 1999	100.0	100.0	100.0	100.0	100.0	100.0	100.0	100.0	100.0	100.0	100.0	100.0	100.0	100.0	100.0	December 2006
ሐምሌ 1999 - ሰኔ 2000	119.1	130.4	108.5	107.9	106.4	111.0	108.8	109.1	99.7	108.8	102.4	117.1	100.7	100.7	100.7	July 2007 - June 2008
ሐምሌ 2000 - ሰኔ 2001	169.5	205.1	136.3	159.6	164.8	149.9	131.1	135.0	104.8	124.8	117.7	137.6	118.3	118.3	118.3	July 2008 - June 2009
ሐምሌ 2001 - ሰኔ 2002	181.1	210.2	153.9	168.4	219.8	172.8	137.6	162.0	239.5	128.8	141.9	149.3	120.7	120.7	120.7	July 2009 - June 2010
2002																2009/2010
ግንቦት 2002	187.7	218.1	159.4	168.8	225.8	179.1	144.6	168.3	249.1	128.3	149.9	150.3	119.7	119.7	119.7	May "
ሰኔ 2002	186.8	216.8	158.9	174.1	219.3	177.6	142.7	167.5	253.4	128.1	154.5	151.9	120.8	120.8	120.8	June "
2003																2010/2011
ሐምሌ 2002	187.7	217.3	160.1	173.7	230.6	180.8	143.8	166.8	254.8	128.1	153.1	151.2	121.1	121.1	121.1	July 2010
ኔሐሴ 2002	190.6	222.0	161.4	173.7	231.5	182.2	145.7	168.9	254.4	128.1	153.2	153.7	121.3	121.3	121.3	August "
መስከረም 2003	199.8	233.9	167.9	175.3	250.0	189.6	154.6	171.2	257.0	128.1	162.7	153.7	122.3	122.3	122.3	September "
ጥቅምት 2003	202.3	235.0	171.9	175.3	258.5	197.6	156.6	176.8	262.9	133.5	160.1	161.2	121.6	121.6	121.6	October "
ዳር 2003	207.0	242.0	174.3	178.2	275.6	196.4	156.8	176.9	260.9	146.0	167.5	164.9	124.3	124.3	124.3	November "
ታህሳስ 2003	210.4	241.1	181.8	190.5	281.4	202.8	171.4	177.9	264.7	146.7	169.4	168.1	124.4	124.4	124.4	December "
ጥር 2003	220.2	259.7	183.3	195.4	281.4	200.2	172.6	179.8	256.3	147.5	167.6	172.0	162.1	162.1	162.1	January 2011
የካቲት 2003	227.8	272.0	186.5	184.3	268.9	207.6	176.4	184.9	305.1	140.0	170.5	169.3	180.1	180.1	180.1	February "
መጋቢት 2003	221.8	257.3	188.7	212.5	268.9	200.1	181.8	181.2	306.5	140.0	180.8	167.6	186.0	186.0	186.0	March "
ሚያዝያ 2003	237.2	281.6	195.8	185.8	296.2	211.3	188.8	186.6	279.4	144.9	185.8	174.3	229.5	229.5	229.5	April "
ግንቦት 2003	242.6	288.3	200.0	185.8	298.5	210.3	197.5	192.5	277.8	144.9	182.5	178.0	256.5	256.5	256.5	May "

ሠንጠረዥ 100:- ጠቅላላ የ ሽግግር ዋጋ መዘዥ ኢንዱስትሪ ቢሮ የተሳተፉ ክፍሎች ለአርጊያ ክልል መገንጠያ

ታህሳስ 1999 = 100

Table 10a: General Consumer Price Index and Its Components for the Oromiya Regional State

December 2006 = 100

ወርና ዓመት	ጠቅላላ ኢንዱስትሪ	ጠቅላላ የምግብ ኢንዱስትሪ	ጠቅላላ የምግብ ክፍል	Non-food Consumer Price Index Components											Month and Year
				መጠጥ	ቢሻራና ትምባሆ	ላብስና መጫጫያ	የቤት ኪራይና የቤት መሥሪያ ስቃዎች+ውሃና ነጻጅናገዳል	የቤት ስቃዎች የቤት ግንባታዎች የቤት ቁሳቁስና የቤት ሠራተኞች ደመወዝ	ሕክምና	ትራንስፖርትና መገናኛ	መዝናኛና ትምህርት	የግል ገንባታና የግል ቋጫ ስቃዎች	ሌሎች ስቃዎች		
ታህሳስ 1999	100.0	100.0	100.0	100.0	100.0	100.0	100.0	100.0	100.0	100.0	100.0	100.0	100.0	100.0	December 2006
ሐምሌ 1999 - ሰኔ 2000	129.0	138.7	115.0	116.5	108.2	118.7	113.6	123.7	108.9	103.3	107.2	113.4	103.2	103.2	July 2007 - June 2008
ሐምሌ 2000 - ሰኔ 2001	179.5	202.0	146.9	182.8	143.8	152.0	142.4	155.0	134.0	106.4	126.3	149.2	118.7	118.7	July 2008 - June 2009
ሐምሌ 2001 - ሰኔ 2002	181.5	187.8	172.4	191.7	171.3	192.7	164.4	185.2	155.5	124.3	147.5	182.4	133.1	133.1	July 2009 - June 2010
2002															2009/2010
ግንቦት 2002	185.0	186.9	182.2	190.0	182.8	208.5	173.2	199.5	164.2	132.8	157.4	190.8	141.4	141.4	May "
ሰኔ 2002	188.1	189.4	186.2	196.3	186.6	211.9	178.6	202.0	166.7	131.6	157.2	197.0	140.7	140.7	June "
2003															2010/2011
ሐምሌ 2002	187.1	187.1	187.2	193.4	186.4	212.9	180.8	202.3	165.8	132.0	157.3	199.8	142.7	142.7	July 2010
ኔሐሴ 2002	189.3	190.2	187.9	198.0	184.3	214.6	178.8	206.8	164.4	134.9	162.0	200.9	138.5	138.5	August "
መስከረም 2003	193.9	195.0	192.4	198.2	192.8	220.8	183.7	211.4	166.7	134.9	167.9	209.7	139.2	139.2	September "
ጥቅምት 2003	199.0	200.8	196.4	199.0	221.0	222.5	183.8	223.4	171.1	140.0	193.2	217.4	141.5	141.5	October "
ዳረ 2003	199.6	200.8	197.9	201.0	229.3	223.2	180.3	232.0	174.2	146.0	199.3	234.7	144.6	144.6	November "
ታህሳስ 2003	208.5	206.7	211.1	203.7	231.2	242.7	202.2	231.2	178.7	153.2	193.4	240.0	149.8	149.8	December "
ጥር 2003	218.5	219.9	216.5	211.0	237.0	250.7	204.4	237.0	180.8	167.6	203.8	247.5	151.0	151.0	January 2011
የካቲት 2003	217.5	218.4	216.2	210.5	236.8	256.8	201.6	230.0	179.0	176.8	206.9	247.8	153.0	153.0	February "
መጋቢት 2003	232.9	240.1	222.6	215.6	235.9	264.7	207.7	241.4	184.4	185.1	200.7	259.7	146.4	146.4	March "
ሚያዝያ 2003	242.4	252.6	227.7	220.0	239.2	268.4	211.2	250.1	183.6	201.6	208.1	257.8	157.6	157.6	April "
ግንቦት 2003	254.5	270.9	230.8	231.4	262.9	274.0	211.0	251.0	184.4	209.1	208.3	260.0	154.0	154.0	May "

ሠንጠረዥ 11ሀ፡- ጠቅላላ የ ሽግግር ዋጋ መመዘኛ ኢንዱስትሪ ቢሮ የተካተቱ ክፍሎች ለደብዳቤ አላገጽ መገንጠያ

ታህሳስ 1999 = 100

Table 11a: General Consumer Price Index and Its Components for the SNNP Regional State

December 2006= 100

ወርና ዓመት	ጠቅላላ ኢንዱስትሪ	ጠቅላላ የምግብ ኢንዱስትሪ	ጠቅላላ የምግብ ክፍል	Non-food Consumer Price Index Components											Month and Year	
				መጠጥ	ቢሻራና ትምባሆ	ላብስና መጫጫያ	የቤት ኪራይና የቤት መሥሪያ ስቃዎች+ውሃና ነጻጅናገዳል	የቤት ስቃዎች የቤት ግንባራዎች የቤት ቁሳቁስና የቤት ሠራተኞች ደመወዝ	ሕክምና	ትራንስፖርትና መገናኛ	መዝናኛና ትምህርት	የግል ገንቢና የግል ቋጫ ስቃዎች	ሌሎች ስቃዎች			
ታህሳስ 1999	100.0	100.0	100.0	100.0	100.0	100.0	100.0	100.0	100.0	100.0	100.0	100.0	100.0	100.0	100.0	December 2006
ሐምሌ 1999 - ሰኔ 2000	125.6	131.1	118.0	118.6	104.0	117.2	117.2	134.3	109.2	124.5	106.8	106.9	106.1	106.1	106.1	July 2007 - June 2008
ሐምሌ 2000 - ሰኔ 2001	173.9	189.3	152.7	178.0	133.9	155.9	150.4	175.6	119.3	136.1	122.7	128.3	114.2	114.2	114.2	July 2008 - June 2009
ሐምሌ 2001 - ሰኔ 2002	180.9	180.4	181.6	195.9	160.5	195.0	177.7	211.7	138.4	155.5	140.6	182.1	125.6	125.6	125.6	July 2009 - June 2010
2002																2009/2010
ግንቦት 2002	181.6	174.0	191.9	204.4	184.3	206.8	188.0	223.8	150.7	164.5	141.5	205.0	126.4	126.4	126.4	May "
ሰኔ 2002	183.3	174.8	194.9	211.1	183.6	214.1	188.2	232.0	146.1	163.8	142.5	206.3	126.4	126.4	126.4	June "
2003																2010/2011
ሐምሌ 2002	183.0	173.9	195.4	207.1	164.8	216.5	189.0	233.7	148.2	163.8	144.5	206.2	126.4	126.4	126.4	July 2010
ኔሐሴ 2002	183.3	174.4	195.6	208.1	168.3	216.8	188.6	235.2	146.0	163.8	146.6	205.9	126.4	126.4	126.4	August "
መስከረም 2003	190.7	180.9	204.2	207.0	194.7	229.9	200.6	239.5	142.6	163.8	153.2	210.9	126.4	126.4	126.4	September "
ጥቅምት 2003	193.1	182.3	207.9	213.9	217.1	235.7	201.5	242.9	149.9	169.3	160.7	222.6	126.1	126.1	126.1	October "
ዳር 2003	194.5	184.2	208.7	210.1	212.2	240.3	201.2	242.6	153.0	174.3	158.2	235.2	125.6	125.6	125.6	November "
ታህሳስ 2003	206.4	197.4	218.8	214.0	225.0	241.2	217.5	260.1	159.7	177.8	159.7	247.3	126.4	126.4	126.4	December "
ጥር 2003	214.2	205.2	226.7	219.9	223.4	252.6	226.4	267.3	159.6	181.8	162.3	251.9	129.6	129.6	129.6	January 2011
የካቲት 2003	215.3	206.8	227.1	210.6	232.2	262.6	225.5	268.2	154.0	183.7	159.4	243.5	131.6	131.6	131.6	February "
መጋቢት 2003	238.8	246.7	227.9	214.5	226.6	263.2	223.9	268.2	158.2	194.9	162.4	257.1	132.1	132.1	132.1	March "
ሚያዝያ 2003	251.0	262.6	235.0	222.9	226.7	271.7	230.8	273.5	162.7	210.8	164.4	267.7	132.1	132.1	132.1	April "
ግንቦት 2003	260.0	273.6	241.3	234.0	268.3	280.8	236.1	279.4	162.2	214.5	162.1	272.2	131.5	131.5	131.5	May "

ሠንጠረዥ 12ሀ:-ጠቅላላ የ ሽግግሮች ዋጋ መመዘኛ ኢንዱስትሪ ቢሥሩ የተሳተፉ ክፍሎች ለሰጧሊ ክልላዊ መንግስት

ታህሳስ 1999 = 100

Table 12a: General Consumer Price Index and Its Components for the Somali Regional State

December 2006 = 100

ወርና ዓመት	ጠቅላላ ኢንዱስትሪ General Index	ጠቅላላ የምግብ ኢንዱስትሪ Food Total	ጠቅላላ የምግብ ነፃ ያልሆኑ ኢንዱስትሪ Non-Food Total	ምግብ ነፃ ያልሆኑ የኢንዱስትሪ ክፍሎች Non-food Consumer Price Index Components										Month and Year	
				መጠጥ Beverages	ሲጃራና ትምባሆ Cigarettes and Tobacco	ልብና መጓጊያ Clothing and Footwear	የቤት ኪራይና ስቃዎች+ውሃና ነጻድናሃይል House Rent, Construction Materials, Water, and Fuel and Power	የቤት ስቃዎች የቤት ግንቢያዎች የቤት ቁሳቁስና የቤት ሠራተኞች ደመወዝ Furniture, Furnishings, Household Equipment and Operation	ሕክምና Medical Care and Health	ትራንስፖርትና መገናኛ ጉምህርት Transport and Communication	መዝናኛና ጉምህርት Recreation, Entertainment and Education	የግል ገጽቦናና የግል ቋጫ ስቃዎች Personal Care and Effects	ሌሎች ስቃዎች Miscellaneous Goods		
ታህሳስ 1999	100.0	100.0	100.0	100.0	100.0	100.0	100.0	100.0	100.0	100.0	100.0	100.0	100.0	100.0	December 2006
ሐምሌ 1999 - ሰኔ 2000	118.5	124.6	108.5	105.8	109.2	111.4	107.9	107.2	133.1	103.5	100.8	99.7	100.8	100.8	July 2007 - June 2008
ሐምሌ 2000 - ሰኔ 2001	170.8	195.9	129.8	134.2	123.1	129.1	128.4	149.6	144.5	115.8	107.8	118.5	131.3	131.3	July 2008 - June 2009
ሐምሌ 2001 - ሰኔ 2002	184.9	203.1	155.1	153.3	156.1	154.5	153.1	176.3	189.2	127.7	132.9	131.8	153.6	153.6	July 2009 - June 2010
2002															2009/2010
ግንቦት 2002	187.9	201.8	165.1	174.1	156.1	161.8	167.5	181.9	212.2	135.0	136.7	135.1	168.2	168.2	May "
ሰኔ 2002	191.7	208.1	164.9	179.6	156.1	161.6	167.8	180.0	204.7	137.0	136.6	135.4	165.4	165.4	June "
2003															2010/2011
ሐምሌ 2002	186.7	198.6	167.2	181.5	156.1	161.2	171.9	183.5	214.9	137.0	136.3	134.8	165.4	165.4	July 2010
ክለሴ 2002	191.1	204.3	169.6	179.2	156.1	168.2	173.7	185.6	215.0	137.0	137.2	134.2	165.4	165.4	August "
መስከረም 2003	198.5	214.3	172.8	179.2	156.1	177.0	174.8	188.0	201.5	140.4	145.2	136.6	186.8	186.8	September "
ጥቅምት 2003	207.4	226.2	176.6	182.1	156.1	182.5	176.1	197.8	205.2	141.1	154.0	143.4	197.5	197.5	October "
ዳር 2003	217.8	240.3	181.0	183.3	156.1	179.8	186.0	199.5	218.5	143.7	162.8	140.5	207.6	207.6	November "
ታህሳስ 2003	224.5	249.4	183.9	203.6	156.1	190.8	182.9	200.9	226.5	146.5	174.0	148.4	209.6	209.6	December "
ጥር 2003	226.5	251.8	185.2	200.8	156.1	186.8	183.0	218.1	231.1	148.3	183.2	145.9	207.5	207.5	January 2011
የካቲት 2003	229.2	255.8	185.8	187.7	156.1	195.8	181.7	208.0	228.4	149.9	181.4	153.1	221.7	221.7	February "
መጋቢት 2003	235.9	261.5	194.0	189.5	156.1	199.9	196.0	213.5	236.3	176.1	181.7	152.4	215.2	215.2	March "
ሚያዝያ 2003	250.5	282.0	199.0	200.7	156.1	200.5	204.2	227.6	234.0	183.2	180.9	144.6	210.4	210.4	April "
ግንቦት 2003	251.7	279.6	206.1	200.7	156.1	216.6	207.4	234.7	260.9	196.6	185.3	155.0	198.2	198.2	May "

ሠንጠረዥ 130:- ጠቅላላ የ ሽግግር ዋጋ መመዘኛ ኢንዱስትሪ ቢሥሩ የተሳተፉ ክፍሎች ለትግራይ ክልል መገንጠያ
 ታህሳስ 1999 = 100

Table 13a: General Consumer Price Index and Its Components for the Tigray Regional State
 December 2006 = 100

ወርና ዓመት	ጠቅላላ ኢንዱስትሪ	ጠቅላላ የግብር ኢንዱስትሪ	ጠቅላላ የግብር ያልሆኑ ኢንዱስትሪ	የግብር ያልሆኑ የኢንዱስትሪ ክፍሎች										Month and Year
				መጠን	ቢሽራና ትምባሆ	ልብስና መጓጊያ	የቤት ኪራይ፣ የቤት መሥሪያ ስቃዎች+ውሃ፣ ነጻጅናሃይል	የቤት ስቃዎች የቤት ግንቢያዎች የቤት ቀሳቆስና የቤት ሠራተኛ ደመወዝ	ሕክምና	ትራንስፖርትና መገናኛ	መዝናኛና ትምህርት	የግል ንጽባናና የግል ጽግ ስቃዎች	ሌሎች ስቃዎች	
General Index	Food Total	Non-Food Total	Beverages	Cigarettes and Tobacco	Clothing and Footwear	House Rent, Construction Materials, Water, and Fuel and Power	Furniture, Furnishings, Household Equipment and Operation	Medical Care and Health	Transport and Communication	Recreation, Entertainment and Education	Personal Care and Effects	Miscellaneous Goods		
ታህሳስ 1999	100.0	100.0	100.0	100.0	100.0	100.0	100.0	100.0	100.0	100.0	100.0	100.0	100.0	December 2006
ሐምሌ 1999 - ሰኔ 2000	130.1	143.4	111.7	112.2	101.6	119.7	107.8	120.2	104.7	99.1	105.0	105.8	116.0	July 2007 - June 2008
ሐምሌ 2000 - ሰኔ 2001	183.0	214.8	139.4	188.8	117.4	161.4	131.1	151.8	106.4	101.4	113.3	126.5	134.5	July 2008 - June 2009
ሐምሌ 2001 - ሰኔ 2002	184.8	198.7	165.7	199.1	188.3	205.1	145.5	184.8	121.8	124.6	127.3	184.1	146.6	July 2009 - June 2010
2002														2009/2010
ግንቦት 2002	190.2	200.8	175.7	207.5	200.2	226.4	149.3	198.8	129.8	135.2	133.5	191.0	150.8	May "
ሰኔ 2002	190.4	203.6	172.2	202.1	190.8	215.7	150.5	193.6	136.1	131.8	136.4	181.4	148.6	June "
2003														2010/2011
ሐምሌ 2002	189.7	202.4	172.4	208.9	193.4	219.9	147.3	196.1	127.7	133.2	135.5	183.7	148.6	July 2010
ኔሐሴ 2002	188.9	200.2	173.4	213.6	205.9	226.6	142.6	198.3	125.6	133.2	141.2	193.6	153.1	August "
መስከረም 2003	191.2	200.6	178.3	213.9	203.3	244.0	143.6	199.0	130.7	133.4	146.7	194.4	156.1	September "
ጥቅምት 2003	193.8	202.0	182.5	213.5	214.6	247.9	145.2	204.6	134.2	138.8	157.9	200.1	175.3	October "
ዳር 2003	193.3	196.8	188.6	213.4	211.5	254.5	152.0	199.8	138.6	145.2	156.5	213.6	193.2	November "
ታህሳስ 2003	191.6	192.7	190.1	202.4	207.6	258.9	151.7	216.2	136.8	148.1	155.2	217.6	171.8	December "
ጥር 2003	199.6	202.6	195.6	224.7	201.3	260.2	158.1	218.2	136.8	154.3	157.5	227.2	183.7	January 2011
የካቲት 2003	195.8	196.4	194.9	200.3	206.3	274.7	152.2	212.5	141.3	154.4	161.1	228.6	174.1	February "
መጋቢት 2003	208.0	210.9	204.0	216.0	211.8	285.1	163.3	224.7	135.0	166.2	159.2	229.5	168.4	March "
ግረብ 2003	216.5	222.9	207.7	208.6	224.0	290.5	164.7	223.9	134.1	182.9	164.8	243.5	172.5	April "
ግንቦት 2003	226.8	234.1	216.7	228.3	222.2	308.4	168.4	232.9	151.4	184.6	171.6	263.9	169.8	May "

ሠንጠረዥ 1A:- ጠቅላላ የምግብ ክፍሎች የ ሽያጭ ዋጋ መመዘኛ ኢንዱስትሪ በአገር አቀፍ ደረጃ

ታህሳስ 1999 = 100

Table 1b: Consumer Price Index of Total Food and Its Components at Country Level

December 2006 = 100

ወርና ዓመት	ጠቅላላ የምግብ	λUA Cereals	በቤት ውስጥ የተወሰኑ የምግብ ዓይነቶች			FOOD TAKEN AT HOME							የተወሰኑ የምግቦች	Month and Year	
			ጥራጥራ Pulses	ዳቦና ሌሎች የተዘጋጁ የምግቦች Bread and other Prepared Food	ሥጋ Meat	ወተት+ ዓይብና እንቁላል Milk,Cheese and Egg	ዘይትና ቅባቶች Oils and Fats	አትክልትና ፍራፍራ Vegetables and Fruits	ቅመግ ቅመም Spices	ደገኞችና ሌሎች ሥራሥሮች Potatoes, Other Tubers and Stems	ደገኞችና ሌሎች Coffee (beans, whole) and Tea Leaves	ሌሎች የምግቦች Other Food Items			የግዝራዊ አገልግሎት Milling Charges
ታህሳስ 1999	100.0	100.0	100.0	100.0	100.0	100.0	100.0	100.0	100.0	100.0	100.0	100.0	100.0	100.0	December 2006
ሐምሌ 1999 - ሰኔ 2000	137.2	137.2	124.1	137.6	120.0	117.7	152.6	142.0	325.9	125.7	124.5	104.7	113.9	118.7	July 2007 - June 2008
ሐምሌ 2000 - ሰኔ 2001	198.0	239.8	169.9	225.5	149.6	159.5	170.3	168.0	272.1	188.3	143.3	164.7	129.6	151.1	July 2008 - June 2009
ሐምሌ 2001 - ሰኔ 2002	187.2	195.4	167.9	235.5	163.0	184.2	167.4	184.9	217.3	194.3	175.1	196.7	155.2	174.4	July 2009 - June 2010
2002															2009/2010
ግንቦት 2002	185.7	177.7	176.0	237.6	167.2	191.6	176.5	185.5	288.6	192.6	179.7	203.6	168.7	182.3	May "
ሰኔ 2002	188.6	181.2	169.0	236.9	172.1	186.9	175.3	199.2	315.1	196.8	181.0	202.9	166.4	183.8	June "
2003															2010/2011
ሐምሌ 2002	186.8	175.4	168.8	238.0	170.7	188.8	178.5	198.4	328.5	188.6	189.1	200.4	163.5	184.1	July 2010
ኦገስት 2002	188.4	171.4	174.6	237.0	174.2	198.3	182.1	214.3	325.9	194.0	203.2	201.4	163.7	184.5	August "
መስከረም 2003	193.2	166.8	173.3	239.4	183.5	207.2	199.3	277.4	332.9	203.3	211.9	213.4	163.9	189.2	September "
ጥቅምት 2003	197.1	167.4	181.5	238.0	175.1	212.0	215.9	293.6	323.1	201.1	231.9	222.7	169.8	195.1	October "
ዳር 2003	196.7	165.2	188.8	236.4	176.4	213.4	221.9	277.2	298.5	204.7	241.7	211.3	173.9	199.1	November "
ታህሳስ 2003	202.1	168.4	197.6	237.8	183.3	211.0	237.5	284.9	269.0	220.6	261.8	212.1	177.8	202.8	December "
ጥር 2003	211.3	177.9	205.7	241.5	176.8	227.5	247.7	309.6	269.2	235.0	284.8	209.2	173.3	205.6	January 2011
ፀደቅ 2003	209.4	170.0	204.1	242.6	155.9	230.9	235.1	303.3	282.5	239.0	322.6	207.1	174.4	200.5	February "
መጋቢት 2003	233.0	191.6	222.1	247.8	157.4	236.1	259.2	359.9	376.1	251.9	380.0	211.9	174.3	212.1	March "
ዲሴምበር 2003	246.2	204.7	239.0	249.7	164.0	239.3	301.8	341.4	418.4	280.8	388.9	218.4	181.2	219.0	April "
ግንቦት 2003	261.3	226.7	275.0	273.4	183.5	247.7	351.7	295.0	440.6	282.0	385.8	216.1	181.8	230.2	May "
	40.7	27.5	56.2	15.1	9.7	29.3	99.3	59.0	52.7	46.4	114.7	6.1	7.8	26.3	

ሠንጠረዥ 2ላ:- የምግብ ዋጋ መመዘኛ ኢንዱስትሪ ግጥም በአገር አቀፍ እና በክልሎች ደረጃ

ታህሳስ 1999 = 100

Table 2b: Summary of Consumer Price Indices of Food at Country and Regional Levels

December 2006=100

ወርና ዓመት	Reporting Level												Month and Year
	Eth.	A.A.	Afar	Amhara	B.Gumuz	D.Dawa	Gambela	Harari	Oromia	SNNP	Somalia	Tigray	
ታህሳስ 1999	100.0	100.0	100.0	100.0	100.0	100.0	100.0	100.0	100.0	100.0	100.0	100.0	December 2006
ሐምሌ 1999 - ሰኔ 2000	137.2	134.8	136.1	139.6	148.2	135.4	133.8	130.4	138.7	131.1	124.6	143.4	July 2007 - June 2008
ሐምሌ 2000 - ሰኔ 2001	198.0	190.7	189.5	198.7	226.1	199.5	226.8	205.1	202.0	189.3	195.9	214.8	July 2008 - June 2009
ሐምሌ 2001 - ሰኔ 2002	187.2	198.5	203.8	185.3	199.8	201.2	205.5	210.2	187.8	180.4	203.1	198.7	July 2009 - June 2010
2002													2009/2010
ጥቅምት 2002	185.7	203.2	210.1	184.1	179.1	203.8	194.4	218.1	186.9	174.0	201.8	200.8	May "
ሰኔ 2001	188.6	209.5	208.5	188.9	180.7	208.6	196.1	216.8	189.4	174.8	208.1	203.6	June "
2003													2010/2011
ሐምሌ 2002	186.8	207.3	209.6	187.2	175.8	204.7	197.1	217.3	187.1	173.9	198.6	202.4	July 2010
ኔሐሴ 2002	188.4	215.5	211.8	186.7	174.1	203.4	195.1	222.0	190.2	174.4	204.3	200.2	August "
መስከረም 2003	193.2	226.6	220.8	190.3	172.1	206.6	201.6	233.9	195.0	180.9	214.3	200.6	September "
ጥቅምት 2003	197.1	226.9	222.3	193.8	177.8	217.3	205.3	235.0	200.8	182.3	226.2	202.0	October "
ዳር 2003	196.7	219.9	223.9	192.1	179.6	211.5	205.7	242.0	200.8	184.2	240.3	196.8	November "
ታህሳስ 2003	202.1	220.5	222.8	193.7	180.5	219.6	215.2	241.1	206.7	197.4	249.4	192.7	December "
ጥር 2003	211.3	221.6	237.5	199.1	194.0	226.0	225.8	259.7	219.9	205.2	251.8	202.6	January 2011
የካቲት 2003	209.4	213.9	237.1	194.1	192.4	220.3	203.3	272.0	218.4	206.8	255.8	196.4	February "
መጋቢት 2003	233.0	233.2	240.8	215.1	217.3	234.8	224.2	257.3	240.1	246.7	261.5	210.9	March "
ጊዮርጊስ 2003	246.2	239.4	252.6	228.3	248.5	255.9	244.7	281.6	252.6	262.6	282.0	222.9	April "
ግንቦት 2003	261.3	251.2	260.0	245.9	271.4	263.4	263.9	288.3	270.9	273.6	279.6	234.1	May "

40.7 23.6 23.8 33.6 51.5 29.3 35.8 32.2 44.9 57.2 38.5 16.6

ሠንጠረዥ 3 ለ፡- ጠቅላላ የሽግግር ዋጋ መመዘኛ ኢንዱክስ በሥራ የተከተቱ ክፍሎች ለለዲሳ አበባ ከተማ መስተዳድር

ታህሳስ 1999 = 100

Table 3b: Consumer Price Index of Total Food and Its Components for Addis Ababa City Administration

December 2006 = 100

ወርና ዓመት	ጠቅላላ የምግብ	አሀል	በቤት ውስጥ የተወሰኑ የምግብ ዓይነቶች			FOOD TAKEN AT HOME						የግብአት ክፍያ	ከቤት ውጭ የተወሰኑ የምግቦች	Month and Year	
			ጥራጥራ	ዳቦና ሌሎች የተዘጋጁ የምግቦች	ሥጋ	ወተት፣ ዓይብና እንቁላል	ዘይትና ቅባቶች	አትክልትና ፍራፍራ	ቅመም ቅመም ሥራሥሮች	ደንችና ሌሎች ሥራሥሮች	ቆይታና ግብፍ				ሌሎች የምግቦች
	Food Total	Cereals	Pulses	Bread and other Prepared Food	Meat	Milk, Cheese and Egg	Oils and Fats	Vegetables and Fruits	Spices	Potatoes, Other Tubers and Stems	Coffee (beans, whole) and Tea Leaves	Other Food Items	Milling Charges	Food taken away from home	
ታህሳስ 1999	100.0	100.0	100.0	100.0	100.0	100.0	100.0	100.0	100.0	100.0	100.0	100.0	100.0	100.0	December 2006
ሐምሌ 1999 - ሰኔ 2000	134.8	122.2	134.5	134.6	118.9	129.4	145.3	134.2	320.3	206.6	128.5	105.9	119.7	120.6	July 2007 - June 2008
ሐምሌ 2000 - ሰኔ 2001	190.7	213.2	192.8	217.4	153.7	182.2	166.2	183.0	252.2	288.8	137.3	159.8	139.7	156.1	July 2008 - June 2009
ሐምሌ 2001 - ሰኔ 2002	198.5	199.1	190.8	235.3	169.1	211.6	168.6	194.3	219.4	265.4	181.6	201.7	160.0	199.3	July 2009 - June 2010
2002															2009/2010
ግንቦት 2002	203.2	182.3	194.2	247.0	178.7	222.7	173.4	196.1	289.8	260.1	181.1	211.0	163.2	219.8	May "
ሰኔ 2002	209.5	184.7	196.0	241.9	184.0	211.9	170.6	255.7	319.1	262.0	181.1	212.1	173.0	223.9	June "
2003															2010/2011
ሐምሌ 2002	207.3	182.7	201.0	237.7	184.2	219.3	173.7	222.8	326.2	252.7	190.8	204.8	170.5	228.8	July 2010
ኦገስት 2002	215.5	183.4	206.0	236.2	185.5	217.0	175.6	316.6	323.9	272.8	194.8	214.9	171.1	233.2	August "
መስከረም 2003	226.6	183.5	206.5	242.2	194.9	233.2	195.6	365.4	341.8	307.4	221.6	239.9	172.5	234.4	September "
ጥቅምት 2003	226.9	186.3	219.4	242.8	188.5	235.7	208.7	354.4	294.2	268.9	250.7	254.6	173.5	236.7	October "
ዳር 2003	219.9	177.4	221.6	241.6	192.5	229.4	215.0	323.6	250.5	251.9	257.1	217.7	173.5	242.8	November "
ታህሳስ 2003	220.5	176.1	237.1	240.0	192.0	222.2	220.3	303.2	238.9	343.9	266.3	216.6	173.5	246.5	December "
ጥር 2003	221.6	182.3	243.1	236.6	192.8	226.1	224.5	272.4	241.0	386.2	286.7	205.0	176.9	248.4	January 2011
ፀሐይት 2003	213.9	175.8	244.4	217.8	189.8	232.7	224.1	216.5	256.5	390.6	317.7	202.7	183.2	231.4	February "
መጋቢት 2003	233.2	184.0	252.7	237.1	187.0	253.3	240.0	248.3	355.5	445.8	393.7	200.2	182.5	258.9	March "
ግድሃት 2003	239.4	193.6	266.9	236.6	187.4	236.0	276.6	219.4	374.7	500.7	398.8	206.8	181.8	258.6	April "
ግንቦት 2003	251.2	203.8	271.7	258.2	194.4	249.0	334.1	180.4	427.1	470.9	407.6	207.5	188.1	263.8	May "

ሠንጠረዥ 4ላ፡- ጠቅላላ የምግብ ክፍሎች የ ሽግግር ዋጋ መመዘኛ ሊንደክስ ለአፋር ክልል መገንጠያ

ታህሳስ 1999 = 100

Table 4b: Consumer Price index of Total Food and Its Components for the Afar Regional State

December 2006 = 100

ወርና ዓመት	ጠቅላላ የምግብ	Cereals	በቤት ውስጥ የተወሰኑ የምግብ ዓይነቶች			FOOD TAKEN AT HOME						የተወሰኑ የምግቦች	Month and Year		
			Pulses	Bread and other Prepared Food	Meat	Milk,Cheese and Egg	Oils and Fats	Vegetables and Fruits	Spices	Potatoes, Other Tubers and Stems	Coffee (beans, whole) and Tea Leaves			Other Food Items	Milling Charges
ታህሳስ 1999	100.0	100.0	100.0	100.0	100.0	100.0	100.0	100.0	100.0	100.0	100.0	100.0	100.0	100.0	December 2006
ሐምሌ 1999 - ሰኔ 2000	136.1	124.6	147.1	127.1	140.1	139.8	151.6	138.8	341.4	151.8	105.8	94.9	101.8	121.1	July 2007 - June 2008
ሐምሌ 2000 - ሰኔ 2001	189.5	206.5	205.3	229.3	178.5	180.0	174.1	192.5	275.7	233.8	143.2	137.1	119.7	170.3	July 2008 - June 2009
ሐምሌ 2001 - ሰኔ 2002	203.8	199.7	194.2	248.0	207.2	223.5	172.5	207.8	214.1	229.1	180.1	190.0	128.0	194.9	July 2009 - June 2010
2002															2009/2010
ግንቦት 2002	210.1	185.2	194.7	258.0	222.0	232.4	186.2	231.3	286.0	228.8	195.1	201.5	136.9	204.9	May "
ሰኔ 2002	208.5	184.5	195.5	244.2	230.9	221.7	187.4	248.9	314.6	238.4	187.8	201.8	136.9	201.9	June "
2003															2010/2011
ሐምሌ 2002	209.6	180.3	198.0	255.2	236.5	228.1	189.1	273.5	308.7	228.8	180.3	188.6	136.9	205.5	July 2010
ኔሐሴ 2002	211.8	180.5	201.7	271.5	244.0	228.9	182.8	284.4	315.6	228.8	183.2	190.3	138.1	201.0	August "
መስከረም 2003	220.8	184.3	200.9	264.9	264.1	234.9	190.2	370.1	296.0	238.8	198.5	197.6	136.9	218.8	September "
ጥቅምት 2003	222.3	174.9	214.8	261.4	266.4	241.6	208.9	380.3	291.5	217.7	212.5	192.3	136.9	220.8	October "
ዳር 2003	223.9	179.9	228.2	263.7	264.0	229.0	211.9	340.8	270.2	217.7	234.2	206.3	148.1	234.8	November "
ታህሳስ 2003	222.8	176.9	240.8	243.0	263.0	252.3	232.0	277.9	226.7	236.1	218.9	206.8	165.4	235.5	December "
ጥር 2003	237.5	190.5	233.2	267.4	290.9	272.8	236.3	287.4	229.6	259.9	280.7	176.0	156.9	241.2	January 2011
ፀሐይት 2003	237.1	186.6	238.3	279.6	253.6	298.1	226.1	256.3	229.9	274.3	260.0	189.5	168.1	240.3	February "
መጋቢት 2003	240.8	201.8	265.1	270.2	241.0	258.8	240.6	270.6	294.2	308.1	295.0	195.7	156.9	239.3	March "
ጊዳር 2003	252.6	209.0	274.2	272.4	278.0	271.5	289.9	236.6	371.0	376.1	293.2	196.0	156.9	239.7	April "
ግንቦት 2003	260.0	242.1	326.9	310.4	286.8	234.9	214.9	214.8	406.1	406.8	299.5	195.7	156.4	268.4	May "

ሠንጠረዥ 5ሀ:- ጠቅላላ የምግብና የምግብ ክፍሎች የ ሽግግር ዋጋ መመዘኛ ለገደብ ለሌሎች ክልላዊ መንግሥት
 ታህሳስ 1999 = 100

Table 5b: Consumer Price Index of Total Food and Its Components for the Amhara Regional State
 December 2006 = 100

ወርና ዓመት	ጠቅላላ የምግብ	ጸሀል	በቤት ውስጥ የተወሰኑ የምግብ ዓይነቶች			FOOD TAKEN AT HOME						የግብአት ክፍሎች	ክብት ወ-ጧ	Month and Year	
			ጥራጥራ	ዳቦና ሌሎች የተዘጋጁ የምግቦች	ሥጋ	ወተት+ ዓይብና እንቁላል	ዘይትና ቅብቶች	አትክልትና ፍራፍራ	ቅመግ ቅመጦ	ደገኞች ሌሎች ሥራሥሮች	ያልተቆላ ቡናና ሻይ ቅጠል				ሌሎች የምግቦች
ታህሳስ 1999	100.0	100.0	100.0	100.0	100.0	100.0	100.0	100.0	100.0	100.0	100.0	100.0	100.0	100.0	December 2006
ሐምሌ 1999 - ሰኔ 2000	139.6	137.6	117.9	131.0	117.8	125.6	161.8	129.4	297.0	122.1	125.2	105.8	106.7	121.4	July 2007 - June 2008
ሐምሌ 2000 - ሰኔ 2001	198.7	231.9	163.4	215.5	144.6	178.9	183.7	160.6	248.5	188.8	140.1	183.2	121.2	158.7	July 2008 - June 2009
ሐምሌ 2001 - ሰኔ 2002	185.3	194.7	155.9	221.4	164.3	206.7	176.1	181.1	199.8	201.0	185.1	212.1	150.5	179.7	July 2009 - June 2010
2002															2009/2010
ግንቦት 2002	184.1	179.9	156.3	218.1	171.7	212.1	182.7	182.1	265.9	208.6	196.8	214.7	161.4	182.1	May "
ሰኔ 2002	188.9	185.2	161.7	221.8	169.3	214.2	188.6	194.7	278.8	206.3	193.6	212.8	160.4	187.8	June "
2003															2010/2011
ሐምሌ 2002	187.2	180.8	162.4	224.3	168.8	219.6	189.2	184.9	291.2	198.9	194.2	211.8	159.1	187.5	July 2010
ኦገስት 2002	186.7	174.2	167.4	220.1	171.3	213.8	194.5	232.4	298.7	191.4	202.1	210.8	164.5	185.6	August "
መስከረም 2003	190.3	171.2	168.9	219.9	185.7	214.4	206.3	314.8	302.7	189.7	210.8	222.4	164.6	192.4	September "
ጥቅምት 2003	193.8	174.3	179.7	220.4	174.0	225.4	219.7	312.1	302.5	197.9	214.6	227.7	164.9	195.3	October "
ዳር 2003	192.1	167.7	185.1	220.6	179.4	242.7	233.5	289.7	295.2	191.0	226.2	212.0	171.6	199.1	November "
ታህሳስ 2003	193.7	166.8	196.6	217.0	182.0	237.4	252.8	291.0	262.4	207.4	241.0	215.8	175.9	203.6	December "
ጥር 2003	199.1	172.8	201.8	226.6	176.5	239.8	255.6	314.5	258.8	243.5	259.9	214.1	170.2	204.5	January 2011
ፀደቅት 2003	194.1	163.2	199.1	225.1	162.1	241.1	243.7	260.3	265.9	233.6	304.1	209.2	178.6	204.7	February "
መጋቢት 2003	215.1	183.9	214.1	232.8	164.1	240.8	267.2	281.1	359.5	250.6	338.7	210.8	178.9	210.7	March "
ግዳሴ 2003	228.3	192.8	238.7	231.8	177.6	243.2	309.6	247.8	390.1	299.0	374.9	216.9	179.3	212.7	April "
ግንቦት 2003	245.9	207.5	277.8	241.6	191.6	253.0	361.6	224.1	418.0	295.1	396.7	217.9	179.1	222.9	May "

ወንጠረዥ 6ላ፡- ጠቅላላ ምግብና የምግብ ክፍሎች የ ሽግግር ዋጋ መመዘኛ ኢንፍሊክሽን ስርዓት ለቤኒሻንጉል ንግድ ክልል መገንጠያ
 ታህሳስ 1999 = 100

Table 6b: Consumer Price Index of Total Food and Its Components for the Benishangul Gumuz Regional state
 December 2006 = 100

ወርና ዓመት	ጠቅላላ ምግብ	እሀል	በቤት ውስጥ የተወሰኑ የምግብ ዓይነቶች			FOOD TAKEN AT HOME						የግብአት ክፍያ	ከቤት ውጪ የተወሰኑ ምግቦች	Month and Year	
			ጥራጥራ	ዳቦና ሌሎች የተዘጋጁ ምግቦች	ሥጋ	ወተት፣ ዓይብና እንቁላል	ዘይትና ቅብቶች	አትክልትና ፍራፍሬ	ቅመግ ቅመጦች	ደገኞች ሌሎች ሥራሥሮች	ታላቅታ ሱናና ሻይ ቅጠል				ሌሎች ምግቦች
ታህሳስ 1999	100.0	100.0	100.0	100.0	100.0	100.0	100.0	100.0	100.0	100.0	100.0	100.0	100.0	100.0	December 2006
ሐምሌ 1999 - ሰኔ 2000	148.2	160.9	112.5	129.7	131.1	108.5	142.4	116.6	366.2	127.0	128.5	105.1	111.1	117.8	July 2007 - June 2008
ሐምሌ 2000 - ሰኔ 2001	226.1	297.3	158.6	222.6	172.4	158.4	176.9	149.0	332.9	200.3	134.5	166.3	126.0	150.8	July 2008 - June 2009
ሐምሌ 2001 - ሰኔ 2002	199.8	217.6	163.4	223.5	169.5	195.6	181.4	160.1	274.2	183.9	191.7	198.8	155.8	186.5	July 2009 - June 2010
2002															2009/2010
ግንቦት 2002	179.1	150.1	161.0	221.6	170.5	195.6	202.7	156.1	394.9	183.3	194.4	210.0	162.2	210.6	May "
ሰኔ 2002	180.7	145.9	171.8	207.0	184.3	196.1	185.0	179.5	419.2	192.6	201.2	203.6	161.5	211.5	June "
2003															2010/2011
ሐምሌ 2002	175.8	140.6	176.1	224.5	179.3	211.8	182.9	162.2	319.4	218.1	222.8	201.2	150.0	216.2	July 2010
ኦገስት 2002	174.1	134.3	179.5	223.4	170.4	216.3	180.5	166.1	335.1	206.6	233.6	202.6	150.0	216.6	August "
መስከረም 2003	172.1	122.6	175.8	213.6	177.7	206.9	190.3	216.2	318.3	212.2	233.7	206.0	150.2	217.6	September "
ጥቅምት 2003	177.8	126.1	167.9	214.8	190.7	210.0	202.5	220.5	344.8	182.3	265.1	223.3	153.9	217.2	October "
ዳር 2003	179.6	124.9	179.3	207.5	204.2	218.8	187.1	195.6	380.7	182.2	278.0	211.1	166.6	223.0	November "
ታህሳስ 2003	180.5	132.8	182.1	217.5	189.5	233.1	194.0	182.9	306.1	200.9	291.5	205.4	166.6	224.9	December "
ጥር 2003	194.0	143.1	209.1	233.6	182.5	230.4	257.1	228.9	301.5	220.8	311.4	204.2	171.2	227.0	January 2011
ፀደቅት 2003	192.4	151.1	203.3	204.1	164.8	224.1	313.6	244.9	313.9	210.2	312.6	183.4	164.9	176.4	February "
መጋቢት 2003	217.3	169.2	232.9	219.8	172.1	227.4	305.3	259.7	434.1	191.6	410.5	197.7	166.3	199.7	March "
ግድሃዝያ 2003	248.5	212.9	279.7	224.2	173.5	221.8	327.9	249.9	494.3	231.6	452.1	222.0	163.6	222.4	April "
ግንቦት 2003	271.4	236.3	297.1	253.2	194.4	245.9	400.2	232.9	484.3	286.6	478.2	228.4	155.8	263.4	May "

ሠንጠረዥ 7ለ፡- ጠቅላላ የምግብ ክፍሎች የ ሽያጭ ዋጋ መመዘኛ ኢንዱስትሪ ለድረጃዎ ለስተዳደር ካውንስል

ታህሳስ 1999 = 100

Table 7b: Consumer Price Index of Total Food and Its Components for the Dire Dawa Administrative Council

December 2006 = 100

ወርና ዓመት	ጠቅላላ የምግብ	እሀል	በቤት ውስጥ የተወሰኑ የምግብ ዓይነቶች			FOOD TAKEN AT HOME							ከቤት ውጪ የተወሰኑ የምግቦች	Month and Year	
			ጥራጥራ	ዳቦና ሌሎች የተዘጋጁ የምግቦች	ሥጋ	ወተት፣ ዓይብና እንቁላል	ዘይትና ቅብቶች	አትክልትና ፍራፍራ	ቅመግ ቅመጥ	ደገኞች ሌሎች ሥራሥርኞች	ያልተቆላ ቡናና ሻይ ቅጠል	ሌሎች የምግቦች			የግብረጫ አገልግሎት
ታህሳስ 1999	100.0	100.0	100.0	100.0	100.0	100.0	100.0	100.0	100.0	100.0	100.0	100.0	100.0	100.0	December 2006
ሐምሌ 1999 - ሰኔ 2000	135.4	140.9	148.3	127.9	107.8	118.5	151.7	132.9	353.5	167.6	133.9	95.4	90.7	114.7	July 2007 - June 2008
ሐምሌ 2000 - ሰኔ 2001	199.5	240.3	197.8	236.8	130.0	177.9	183.5	183.0	298.6	221.9	161.8	114.0	95.5	176.8	July 2008 - June 2009
ሐምሌ 2001 - ሰኔ 2002	201.2	220.8	189.2	243.2	142.4	207.1	179.2	205.8	226.8	196.5	190.4	117.0	104.8	189.0	July 2009 - June 2010
2002															2009/2010
ግንቦት 2002	203.8	206.2	197.6	240.2	161.8	185.6	190.4	209.2	301.1	230.9	211.2	117.3	104.9	195.1	May "
ሰኔ 2002	208.6	207.8	199.1	245.7	160.2	195.8	188.4	265.1	334.2	225.5	200.9	117.3	104.9	208.5	June "
2003															2010/2011
ሐምሌ 2002	204.7	206.7	198.8	238.6	158.7	187.4	185.9	281.4	320.2	225.3	193.6	117.3	104.9	191.7	July 2010
ኦገስት 2002	203.4	208.4	210.2	241.6	159.9	194.5	188.4	263.6	313.2	248.8	176.5	117.3	104.9	191.9	August "
መስከረም 2003	206.6	204.5	217.4	245.2	165.4	213.1	203.6	297.7	331.3	264.5	172.2	117.3	103.7	190.4	September "
ጥቅምት 2003	217.3	214.1	241.8	240.8	160.6	209.2	220.3	359.4	316.9	269.7	183.1	119.1	115.5	208.4	October "
ዳር 2003	211.5	209.5	245.9	249.9	165.0	218.2	227.0	340.8	244.6	253.1	153.9	119.1	110.0	210.1	November "
ታህሳስ 2003	219.6	207.2	257.1	243.3	163.9	223.2	238.6	297.1	228.2	252.7	216.6	118.2	113.0	232.1	December "
ጥር 2003	226.0	216.3	261.6	251.5	141.1	228.9	255.0	330.4	224.8	347.0	216.2	118.3	113.0	220.0	January 2011
ፀደቅት 2003	220.3	209.0	249.7	248.5	143.2	242.2	235.3	279.0	241.5	337.8	220.1	118.1	113.0	219.8	February "
መጋቢት 2003	234.8	219.1	263.8	251.0	141.7	242.3	256.9	260.8	347.0	351.3	256.6	119.5	113.0	251.4	March "
ግዳታ 2003	255.9	238.8	303.1	253.4	140.9	249.9	302.8	267.2	392.7	375.2	316.9	120.3	113.0	252.5	April "
ግንቦት 2003	263.4	263.9	319.0	257.4	151.9	256.2	302.5	249.0	462.7	344.3	298.7	121.8	115.9	267.5	May "

ሠንጠረዥ 8ሀ:- ጠቅላላ የምግብና የምግብ ክፍሎች የ ሽግግር ዋጋ መመዘኛ ኢንዱስትሪ ለጋምቤላ ሕዝቦች ክልላዊ መገንጠያ

ታህሳስ 1999 = 100

Table 8b: Consumer Price Index of Total Food and Its Components for the Gambela Peoples Regional State

December 2006 = 100

ወርና ዓመት	ጠቅላላ የምግብ	እህል	በዚህ ውስጥ የተወሰኑ የምግብ ዓይነቶች			FOOD TAKEN AT HOME						የግብረጫ አገልግሎት	ከዚህ ውጪ የተወሰኑ የምግቦች	Month and Year	
			ጥራጥራ	ዳቦና ሌሎች የተዘጋጁ የምግቦች	ሥጋ	ወተት+ ዓይብና እንቁላል	ዘይትና ቅብቶች	አትክልትና ፍራፍራ	ቅመግ ቅመጥ	ደንችና ሌሎች ሥራሥሮች	ቃልተቆላ ቡናና ሻይ ቅጠል				ሌሎች የምግቦች
ታህሳስ 1999	100.0	100.0	100.0	100.0	100.0	100.0	100.0	100.0	100.0	100.0	100.0	100.0	100.0	100.0	December 2006
ሐምሌ 1999 - ሰኔ 2000	133.8	124.8	141.2	167.1	131.8	131.5	150.1	138.5	411.3	142.3	124.0	112.4	110.4	133.2	July 2007 - June 2008
ሐምሌ 2000 - ሰኔ 2001	226.8	253.3	294.1	360.5	153.4	201.1	167.9	224.5	313.5	219.5	122.9	165.6	126.7	167.0	July 2008 - June 2009
ሐምሌ 2001 - ሰኔ 2002	205.5	193.2	289.8	370.4	171.4	250.7	166.1	262.9	205.7	195.9	152.3	189.4	125.6	175.8	July 2009 - June 2010
2002															2009/2010
ግንቦት 2002	194.4	155.2	274.1	383.4	201.8	294.9	175.2	274.5	271.7	188.9	151.1	194.9	134.0	182.1	May "
ሰኔ 2002	196.1	161.0	300.9	362.1	187.5	275.1	173.8	266.4	312.2	206.7	155.4	190.7	129.1	182.1	June "
2003															2010/2011
ሐምሌ 2002	197.1	164.0	292.6	357.9	187.5	288.1	173.4	266.1	336.5	185.8	171.9	186.5	129.1	182.1	July 2010
ኦገስት 2002	195.1	152.6	322.9	347.7	188.1	281.3	174.6	266.0	356.7	203.2	193.9	187.4	129.1	192.7	August "
መስከረም 2003	201.6	148.7	300.3	339.3	192.9	307.7	179.3	319.2	365.0	246.6	205.9	200.7	129.1	198.0	September "
ጥቅምት 2003	205.3	147.0	300.6	344.1	189.2	245.9	182.4	344.8	372.9	266.2	252.8	209.4	129.1	220.6	October "
ዳረ 2003	205.7	153.6	308.0	350.9	191.7	288.7	199.3	310.0	389.3	219.7	271.4	200.1	129.1	220.6	November "
ታህሳስ 2003	215.2	166.9	336.7	342.0	194.3	308.8	205.8	324.6	331.9	226.8	266.6	192.4	110.0	219.8	December "
ጥር 2003	225.8	176.5	311.2	353.1	215.0	309.2	224.1	330.0	304.1	299.3	269.3	202.8	110.1	225.0	January 2011
የካቲት 2003	203.3	153.1	370.5	333.3	166.3	275.8	214.8	288.3	324.4	197.7	337.2	196.2	124.4	190.2	February "
መጋቢት 2003	224.2	172.4	376.3	352.2	163.9	285.8	220.4	351.0	470.3	201.1	388.4	202.6	144.8	180.2	March "
ግዳሴ 2003	244.7	206.6	414.4	353.9	179.8	285.0	282.9	311.9	437.8	232.0	392.2	224.0	140.3	219.8	April "
ግንቦት 2003	263.9	236.3	401.5	376.4	183.4	306.9	252.7	353.7	486.6	237.2	395.9	216.4	144.8	223.1	May "

ወንጠረዥ 9ለ፡- ጠቅላላ የምግብ ክፍሎች የ ሽያጭ ዋጋ መመዘኛ ኢንዱስትሪ ስራ ክልል መገንጠያ
 ታህሳስ 1999 = 100

Table 9b: Consumer Price Index of Total Food and Its Components for the Harari People Regional State
 December 2006 = 100

ወርና ዓመት	ጠቅላላ ምግብ	Cereals	በቤት ውስጥ የተወሰኑ የምግብ ዓይነቶች			FOOD TAKEN AT HOME						ከቤት ውጪ የተወሰኑ ምግቦች	Month and Year		
			Pulses	Bread and other Prepared Food	Meat	Milk, Cheese and Egg	Oils and Fats	Vegetables and Fruits	Spices	Potatoes, Other Tubers and Stems	Coffee (beans, whole) and Tea Leaves			Other Food Items	Milling Charges
ታህሳስ 1999	100.0	100.0	100.0	100.0	100.0	100.0	100.0	100.0	100.0	100.0	100.0	100.0	100.0	100.0	December 2006
ሐምሌ 1999 - ሰኔ 2000	130.4	128.3	129.6	124.0	112.4	120.7	160.5	154.9	312.5	182.1	119.6	101.4	101.9	123.1	July 2007 - June 2008
ሐምሌ 2000 - ሰኔ 2001	205.1	228.0	164.6	244.8	141.2	154.9	191.3	171.7	285.4	227.0	216.9	120.4	125.9	177.8	July 2008 - June 2009
ሐምሌ 2001 - ሰኔ 2002	210.2	209.5	171.6	221.5	150.4	159.0	184.9	200.4	188.1	175.6	285.7	123.0	136.7	192.3	July 2009 - June 2010
2002															2009/2010
ግንቦት 2002	218.1	201.0	173.5	210.5	157.7	154.9	201.4	213.0	216.5	207.8	331.7	123.0	138.4	197.4	May "
ሰኔ 2002	216.8	198.3	184.8	214.0	156.8	167.2	198.2	244.0	243.6	184.4	309.9	123.8	138.4	209.8	June "
2003															2010/2011
ሐምሌ 2002	217.3	200.9	191.1	212.7	160.8	170.6	196.3	249.3	252.8	203.3	304.8	123.8	138.4	205.0	July 2010
ኦገስት 2002	222.0	199.9	210.3	211.9	166.2	176.7	190.7	264.8	241.4	207.8	322.7	122.2	138.4	209.5	August "
መስከረም 2003	233.9	198.3	219.9	220.1	189.8	175.9	217.5	369.9	218.8	222.2	339.2	123.0	138.4	216.4	September "
ጥቅምት 2003	235.0	194.0	257.2	219.9	176.4	178.3	220.4	406.0	222.8	212.8	340.6	123.8	138.4	212.4	October "
ዳር 2003	242.0	195.9	259.9	219.8	190.8	179.4	234.4	346.8	217.2	198.3	380.2	124.6	138.4	218.6	November "
ታህሳስ 2003	241.1	193.7	275.3	218.8	183.9	181.8	245.3	314.0	224.0	222.2	380.8	123.8	138.4	218.7	December "
ጥር 2003	259.7	187.1	269.9	224.9	185.8	216.2	281.0	284.7	212.8	304.3	468.3	127.2	138.4	222.6	January 2011
ፀደቅት 2003	272.0	191.5	264.4	229.7	147.2	176.5	245.0	279.0	213.6	342.0	555.5	128.7	133.3	219.8	February "
መጋቢት 2003	257.3	202.0	291.4	210.2	156.3	180.9	283.1	301.8	296.6	392.6	436.6	120.5	133.3	218.5	March "
ግዳሴ 2003	281.6	213.0	274.6	229.1	150.0	213.1	322.3	255.0	311.0	355.0	528.3	127.2	149.1	230.0	April "
ግንቦት 2003	288.3	233.2	335.2	263.8	168.1	237.2	322.8	225.1	360.7	360.0	489.0	129.5	149.1	232.2	May "

መንግሥት 10ሳ- ጠቅላላ የምግብ ክፍሎች የሽያጭ ዋጋ መመዘኛ ኢንዱስትሪ ስራዎች ክልል መገንጠያ
 ታህሳስ 1999 = 100

Table 10b: Consumer Price Index of Total Food and Its Components for the Oromiya Regional State
 December 2006 = 100

ወርና ዓመት	ጠቅላላ የምግብ	እህል	በቤት ውስጥ የተወሰኑ የምግብ ዓይነቶች			FOOD TAKEN AT HOME						ከቤት ውጪ የተወሰኑ የምግቦች	Month and Year		
			ጥሬ-ጥሬ	ዳቦና ሌሎች የተዘጋጁ የምግቦች	ሥጋ	ወተት+ ዓይብና እንቁላል	ዘይትና ቅብቶች	አትክልትና ፍሬፍሬ	ቅመም ቅመም	ደንችና ሌሎች ሥራሥሮች	ያልተቀላ ቡናና ሻይ ቅጠል			ሌሎች የምግቦች	የግብረ-ጫ አገልግሎት
ታህሳስ 1999	100.0	100.0	100.0	100.0	100.0	100.0	100.0	100.0	100.0	100.0	100.0	100.0	100.0	100.0	December 2006
ሐምሌ 1999 - ሰኔ 2000	138.7	137.3	127.0	147.9	119.9	116.4	151.9	147.1	379.6	134.7	121.9	102.5	118.2	122.6	July 2007 - June 2008
ሐምሌ 2000 - ሰኔ 2001	202.0	242.8	175.2	238.0	152.0	155.2	163.5	176.6	314.2	204.1	142.0	161.6	133.9	156.2	July 2008 - June 2009
ሐምሌ 2001 - ሰኔ 2002	187.8	193.2	174.6	248.0	161.2	175.7	160.5	192.8	253.7	202.1	171.0	197.2	158.1	181.4	July 2009 - June 2010
2002															2009/2010
ግንቦት 2002	186.9	174.1	191.4	250.9	160.7	187.3	170.8	200.5	332.3	213.1	174.7	205.1	175.8	190.5	May "
ሰኔ 2002	189.4	178.1	173.7	249.5	171.8	179.7	171.4	200.4	368.5	228.2	176.9	202.7	170.9	190.2	June "
2003															2010/2011
ሐምሌ 2002	187.1	172.2	171.3	249.4	168.3	181.3	175.6	201.0	393.7	207.0	187.0	199.1	166.9	191.4	July 2010
ኦገስት 2002	190.2	170.9	179.9	250.9	175.0	193.9	179.6	198.5	364.9	223.5	203.5	199.0	164.4	192.3	August "
መስከረም 2003	195.0	165.4	173.9	253.9	181.6	203.7	200.5	262.9	386.3	234.2	209.2	213.4	162.6	196.7	September "
ጥቅምት 2003	200.8	164.7	182.4	250.8	171.6	206.4	221.3	292.5	377.5	235.7	232.6	220.4	173.8	206.6	October "
ዳር 2003	200.8	163.8	193.4	250.2	169.5	206.7	223.5	283.7	335.9	233.1	243.7	208.7	177.9	212.7	November "
ታህሳስ 2003	206.7	168.7	202.4	253.9	182.3	197.7	237.3	285.7	307.7	248.7	264.1	208.5	180.2	211.1	December "
ጥር 2003	219.9	178.5	213.7	253.2	169.6	222.5	249.6	336.6	310.0	283.4	280.8	204.4	177.3	219.7	January 2011
ፀደቅት 2003	218.4	172.0	214.2	259.6	150.5	223.8	231.3	337.8	310.2	283.5	316.1	202.7	175.3	207.7	February "
መጋቢት 2003	240.1	191.2	237.5	256.2	151.8	232.2	262.4	353.3	437.7	274.1	373.6	207.8	175.1	224.6	March "
ሚያዝያ 2003	252.6	203.6	251.2	263.8	154.5	235.7	296.5	342.4	485.5	318.4	370.4	215.2	182.9	226.1	April "
ግንቦት 2003	270.9	230.3	296.8	295.1	177.7	245.0	368.7	295.5	499.7	315.3	358.7	211.6	184.3	243.8	May "

ሠንጠረዥ 11A:- ጠቅላላ የምግብ ክፍሎች የሽያጭ ዋጋ መመዘኛ ኢንዱስትሪ ለደብዳቤ ክልል መገንጠያ
 ታህሳስ 1999 = 100

Table 11b: Consumer Price Index of Total Food and Its Components for the SNNP Regional State
 December 2006 = 100

ወርና ዓመት	ጠቅላላ የምግብ	እህል	በቤት ውስጥ የተወሰኑ የምግብ ዓይነቶች			FOOD TAKEN AT HOME							ከቤት ውጪ የተወሰኑ የምግቦች	Month and Year	
			ጥራጥራ	ዳቦና ሌሎች የተዘጋጁ የምግቦች	ሥጋ	ወተት፣ ዓይብና እንቁላል	ዘይትና ቅብቶች	አትክልትና ፍራፍሬ	ቅመግ ቅመጦች	ደንችና ሌሎች ሥራሥሮች	ቃልተቀላ ቡናና ሻይ ቅጠል	ሌሎች የምግቦች			የግብረጫ አገልግሎት
ታህሳስ 1999	100.0	100.0	100.0	100.0	100.0	100.0	100.0	100.0	100.0	100.0	100.0	100.0	100.0	100.0	December 2006
ሐምሌ 1999 - ሰኔ 2000	131.1	136.1	122.9	126.9	121.5	119.2	143.7	146.8	264.5	117.1	132.2	112.2	106.0	107.1	July 2007 - June 2008
ሐምሌ 2000 - ሰኔ 2001	189.3	237.2	156.7	220.2	152.6	159.1	167.3	156.8	227.9	173.1	145.0	175.6	121.2	127.3	July 2008 - June 2009
ሐምሌ 2001 - ሰኔ 2002	180.4	186.1	161.7	232.0	165.8	193.9	169.5	175.9	193.9	185.8	168.0	203.6	138.7	146.6	July 2009 - June 2010
2002															2009/2010
ግንቦት 2002	174.0	168.0	161.2	239.3	173.4	193.3	172.6	163.4	261.8	172.2	164.8	209.1	146.1	158.2	May "
ሰኔ 2002	174.8	165.4	159.1	231.8	173.3	196.9	165.4	189.8	313.4	168.1	169.3	209.2	146.7	154.0	June "
2003															2010/2011
ሐምሌ 2002	173.9	157.2	161.0	233.5	173.4	195.3	166.2	195.0	326.1	170.6	181.6	206.2	149.4	153.8	July 2010
ኦገስት 2002	174.4	149.2	161.8	229.1	173.5	203.7	173.3	212.0	354.9	168.3	199.2	211.1	151.4	156.5	August "
መስከረም 2003	180.9	145.7	167.2	234.1	180.7	210.3	186.4	266.3	335.6	177.4	215.9	219.5	154.5	161.2	September "
ጥቅምት 2003	182.3	146.3	172.7	234.4	176.8	215.0	194.7	275.6	300.9	171.3	236.6	228.2	157.2	167.0	October "
ዳር 2003	184.2	153.1	175.6	227.4	178.8	217.8	201.4	253.3	258.4	182.0	232.1	223.8	158.8	168.0	November "
ታህሳስ 2003	197.4	164.8	178.4	235.4	183.3	231.9	223.3	291.4	242.8	197.0	257.9	222.6	163.5	176.2	December "
ጥር 2003	205.2	176.9	183.5	240.5	180.4	233.0	232.0	294.7	251.7	190.7	308.9	226.1	171.8	176.1	January 2011
ፀደቅት 2003	206.8	166.2	178.8	236.7	140.1	240.2	226.1	314.4	310.4	200.1	354.4	222.9	173.1	176.0	February "
መጋቢት 2003	246.7	207.6	189.8	264.7	147.8	238.1	246.2	476.4	335.0	230.4	434.3	230.0	173.6	186.3	March "
ሚያዝያ 2003	262.6	231.7	206.1	255.1	154.1	246.6	305.8	452.0	406.8	243.5	439.7	231.6	184.0	203.1	April "
ግንቦት 2003	273.6	255.3	230.3	277.8	171.2	250.6	329.4	379.2	434.1	249.2	455.1	237.3	184.4	210.0	May "

ወንጠረኝ 12A:- ጠቅላላ የምግብ ክፍሎች የ ሽግግር ዋጋ መመዘኛ ኢንዱክስ ስራ ስራ ክልል መገንጠያ
 ታህሳስ 1999 = 100

Table 12b: Consumer Price Index of Total Food and Its Components for the Somali Regional State

December 2006 = 100

ወርና ዓመት	ጠቅላላ ምግብ	እህል	በቤት ውስጥ የተወሰኑ የምግብ ዓይነቶች			FOOD TAKEN AT HOME						የምግብ አገልግሎት	ከቤት ውጭ የተወሰኑ ምግቦች	Month and Year	
			ጥራጥራ	ዳቦና ሌሎች የተዘጋጁ ምግቦች	ሥጋ	ወተት+ ዓይብና እንቁላል	ዘይትና ቅባቶች	አትክልትና ፍራፍራ	ቅመም ቅመም	ደንችና ሌሎች ሥራሥሮች	ያልተቆየ ቡናና ጃይ ቅጠል				ሌሎች ምግቦች
Food Total	Cereals	Pulses	Bread and other Prepared Food	Meat	Milk,Cheese and Egg	Oils and Fats	Vegetables and Fruits	Spices	Potatoes, Other Tubers and Stems	Coffee (beans, whole) and Tea Leaves	Other Food Items	Milling Charges	Food taken away from home		
ታህሳስ 1999	100.0	100.0	100.0	100.0	100.0	100.0	100.0	100.0	100.0	100.0	100.0	100.0	100.0	December 2006	
ሐምሌ 1999 - ሰኔ 2000	124.6	136.0	124.9	120.3	126.3	103.1	138.8	128.3	299.8	145.0	115.8	102.8	99.2	120.5	July 2007 - June 2008
ሐምሌ 2000 - ሰኔ 2001	195.9	246.5	175.9	207.5	167.3	171.8	175.4	163.7	272.0	220.7	149.0	152.1	110.4	157.8	July 2008 - June 2009
ሐምሌ 2001 - ሰኔ 2002	203.1	230.5	173.9	223.6	202.5	194.7	172.8	182.3	194.7	191.1	188.0	159.8	119.9	193.0	July 2009 - June 2010
2002															2009/2010
ግንቦት 2002	201.8	220.8	186.1	228.9	228.5	179.3	181.2	186.9	244.4	189.6	197.7	158.0	119.9	202.0	May "
ሰኔ 2002	208.1	233.3	180.1	218.0	231.2	168.3	181.4	228.8	275.0	198.3	196.8	180.8	119.9	204.9	June "
2003															2010/2011
ሐምሌ 2002	198.6	205.6	188.4	209.1	235.2	180.8	182.2	235.4	330.6	193.5	186.3	189.0	119.9	198.4	July 2010
ክሌሌ 2002	204.3	215.0	192.2	215.1	239.7	189.9	182.0	227.9	333.3	193.5	189.8	188.2	119.9	203.5	August "
መስከረም 2003	214.3	212.0	201.1	219.4	267.0	207.9	204.6	279.4	319.4	209.7	214.2	191.1	118.0	219.0	September "
ጥቅምት 2003	226.2	210.9	208.0	218.8	269.1	232.3	212.1	300.5	302.8	224.0	247.9	224.8	119.1	209.0	October "
ዳር 2003	240.3	214.2	228.2	216.3	268.3	227.9	223.2	347.3	225.0	205.0	319.8	225.0	123.7	217.7	November "
ታህሳስ 2003	249.4	225.7	229.3	217.9	265.1	234.8	234.7	303.5	275.0	224.5	337.4	234.5	128.9	226.1	December "
ጥር 2003	251.8	246.8	227.9	221.5	248.0	237.4	255.5	278.5	283.3	280.1	299.4	233.6	125.6	232.9	January 2011
የካቲት 2003	255.8	241.3	240.9	229.3	223.2	254.9	256.0	232.5	250.0	284.7	331.4	242.0	134.3	222.3	February "
ጠቅላይ 2003	261.5	243.2	256.2	230.7	223.5	274.7	270.1	242.7	305.5	297.6	322.3	260.1	137.0	234.4	March "
ሚያዝያ 2003	282.0	272.4	255.7	216.2	238.7	261.1	293.2	247.9	350.0	358.1	369.2	272.3	145.4	251.7	April "
ግንቦት 2003	279.6	301.6	276.0	220.9	262.4	278.3	252.1	227.0	405.5	392.3	296.2	244.4	130.3	254.7	May "

ሠንጠረዥ 13ላ:- ጠቅላላ የምግብ ክፍሎች የ ሽንጃቸው ዋጋ መመዘኛ ኢንዱስትሪ ስታቲስቲክስ ክልላዊ መንግሥት
 ታህሳስ 1999 = 100

Table 13b: Consumer Price Index of Total Food and Its Components for the Tigray Regional State

December 2006 = 100

ወርና ዓመት	ጠቅላላ የምግብ	Cereals	በቤት ውስጥ የተወሰኑ የምግብ ዓይነቶች			FOOD TAKEN AT HOME								ጠቅላላ የተወሰኑ የምግቦች	Month and Year	
			Pulses	Bread and other Prepared Food	Meat	Milk, Cheese and Egg	Oils and Fats	Vegetables and Fruits	Spices	Potatoes, Other Tubers and Stems	Coffee (beans, whole) and Tea Leaves	Other Food Items	Milling Charges			
ታህሳስ 1999	100.0	100.0	100.0	100.0	100.0	100.0	100.0	100.0	100.0	100.0	100.0	100.0	100.0	100.0	100.0	December 2006
ሐምሌ 1999 - ሰኔ 2000	143.4	138.5	129.3	126.5	122.8	114.8	166.5	122.5	345.0	149.0	127.1	104.2	113.7	124.7	124.7	July 2007 - June 2008
ሐምሌ 2000 - ሰኔ 2001	214.8	254.3	180.2	200.9	140.6	158.9	186.5	155.0	287.1	216.1	147.2	156.4	131.2	161.2	161.2	July 2008 - June 2009
ሐምሌ 2001 - ሰኔ 2002	198.7	218.5	175.5	222.7	155.8	184.5	176.0	160.4	191.5	209.0	189.6	197.1	163.5	187.9	187.9	July 2009 - June 2010
2002																2009/2010
ግንቦት 2002	200.8	208.4	180.8	228.3	165.0	195.2	198.8	164.9	256.8	200.4	204.3	215.5	169.9	193.5	193.5	May "
ሰኔ 2002	203.6	213.0	174.3	234.1	168.5	195.9	186.1	175.7	267.0	206.2	202.7	203.0	172.7	200.0	200.0	June "
2003																2010/2011
ሐምሌ 2002	202.4	208.4	176.9	235.7	172.0	192.7	197.8	184.2	268.6	197.4	202.1	201.2	169.2	199.2	199.2	July 2010
ክሐሴ 2002	200.2	203.5	177.4	237.1	170.1	194.2	193.5	204.8	263.7	216.7	203.7	197.3	170.9	198.2	198.2	August "
መስከረም 2003	200.6	194.8	179.5	241.2	177.1	211.1	207.0	274.6	273.6	214.0	201.8	200.3	177.9	195.6	195.6	September "
ጥቅምት 2003	202.0	192.1	181.2	239.0	176.7	225.9	232.0	284.9	271.7	174.5	217.5	205.9	173.9	201.6	201.6	October "
ዳር 2003	196.8	182.8	181.0	235.8	177.6	221.8	242.5	265.6	262.1	182.2	223.8	203.8	175.0	203.3	203.3	November "
ታህሳስ 2003	192.7	174.6	189.2	228.9	178.5	221.5	263.9	236.7	217.8	227.9	244.6	204.9	186.3	212.7	212.7	December "
ጥር 2003	202.6	190.2	194.1	234.3	196.7	221.2	276.0	225.3	213.6	221.2	269.6	202.3	165.8	208.0	208.0	January 2011
የካቲት 2003	196.4	182.4	188.0	231.2	172.4	222.9	251.1	200.6	228.4	234.6	299.4	197.0	167.1	212.5	212.5	February "
መጋቢት 2003	210.9	192.6	198.1	232.4	162.5	216.5	260.8	204.7	307.0	281.0	408.4	196.2	165.8	218.2	218.2	March "
ጊያዝያ 2003	222.9	198.0	203.5	234.1	167.2	200.5	338.8	196.2	341.3	317.4	457.6	200.3	181.4	240.2	240.2	April "
ግንቦት 2003	234.1	216.4	206.5	267.6	195.3	229.0	318.6	190.5	347.6	315.6	444.3	201.6	180.3	234.5	234.5	May "